

1 **Table S1.** Comparison between our study with X chromosome and previous works that have
 2 used similar approaches for common variants.

	Henningsson et al., 2009	Wang et al., 2009	Chung et al., 2011	Ramos et al., 2012	Our study
PUBMED	19167832	19404256	22050706	22681640	
Target trait	Autism	Autism	Autism	Autism	Autism
"Case" Samples	267	3,101 subjects and a second cohort of 1,204 affected subjects	894 ASD families (3,128 individuals) + 939 ASD families (4,495 individuals) + 1,204 cases	1,510 trios	6,873
"Control" Samples	617	6,491	6,472	Family based test	8,981
Sample's global ancestry	204 from the Paris Autism Research International Sib-pair (PARIS) study and 63 came a separate Swedish cohort.	European ancestry	Self-reported Caucasian ancestry.	European descent (76%), with Asian (3%) and African (2%)	European (samples with more than 75% of European ancestry)
Genetic Markers	Genotyped for three polymorphisms in exon 1 of the AR gene	486,864 markers in all genome (not only on X chromosome)	Genotyped data (~13,837 X-chromosome SNPs)	22,904 single nucleotide polymorphisms (SNPs) from the 2,012 immune-related genes	418,876 variants only in the X-chromosome
Association Test Method	Case-Control Comparison plus Transmission Disequilibrium test	Genome-wide association, plus family-based association test using X-APL.	Meta-analysis and joint analysis. genome-wide association study (GWAS) data on the X chromosome in three independent autism GWAS data sets.	Family-based tests of association.	XWAS
Results	Case-control comparisons revealed higher prevalence of short CAG alleles as well as of the A allele of the rs6152 SNP in female cases than in controls, but revealed no significant differences with respect to the GGN repeat.	<i>RHOXF1</i> (combined pvalue 9.7×10^{-7}), Between <i>PRKX</i> and <i>NLGN4X</i> (combined pvalue 9.0×10^{-7}), <i>DMD</i> (combined pvalue 2.7×10^{-7}).	One SNP, rs17321050, in the transducin b-like 1X-linked (<i>TBL1X</i>) gene showed chromosome-wide significance in the meta-analysis (P value = 4.86×10^{-6}) and joint analysis (P value = 4.53×10^{-6}) in males.	Significant associations in the CD99 molecule-like 2 region (CD99L2, rs11796490, P = 4.01×10^{-6} , OR = 0.68 (0.58-0.80))	Detected 59 candidate variants in 13 genes.
Conclusion	The results lend some support for an influence of the studied polymorphisms on the susceptibility for autism, but argue against the possibility that mutations in the AR gene are common in subjects with this condition.	The first demonstration of genome-wide significant association of common variants with susceptibility to ASDs including X chromosome.	Our results, based on meta-analysis, joint analysis and replication analysis, suggest that <i>TBL1X</i> may play a role in ASD risk.	Several novel genes with known immune functions are associated with ASD.	First XWAS using WGS data in Autism, finding variants in 6 ASD-genes plus 8 new ASD-genes candidates.

3

4 **Table S2.** Significant associated variants with the respective P-Value from all different XWAS
 5 (XWAS-Males, XWAS-Females, XWAS-Both, XWAS-Meta).

6 **Table S3.** Significant associated variants with the respective P-Value from all different XWAS
 7 (XWAS-Males, XWAS-Females, XWAS-Both, XWAS-Meta) from all replication tests: i.
 8 MSSNG as case vs HostSeq and MGRB as controls; ii. SSC as case vs HostSeq and MGRB
 9 as controls; iii. SPARK as case vs HostSeq and MGRB as controls; iv. MSSNG, SSC and
 10 SPARK as cases vs HostSeq as controls; v. MSSNG, SSC and SPARK as case and MGRB
 11 as controls.

12 **Table S4.** Significant associated variants with the respective P-Value from all different XWAS
 13 (Male-XWAS, female-XWAS, Both-XWAS and Meta-XWAS) when using the 10 top autosomal
 14 principal components as covariates.

15 **Table S5.** The 91 mapped genes (10kb distance) based on the XWAS significant variants. In
 16 red are highlighted the genes previously associated with ASD on both SFARI and Autdb, and
 17 in yellow the genes that was presented in at least one of those 2 autism gene score systems.

Gene	Count	IndSigSNPs	Males	Females	Both	Meta Analys	SFARI Score	Autdb gene	Gene	Count	IndSigSNPs	Males	Females	Both	Meta Analys
GRPR	3	rs6628945	8.27E-07	6.01E-01	1.12E-03	1.22E-03		2	ARMCX5	1	rs5945876	1.23E-02	1.26E-04	1.84E-05	9.79E-06
RAI2	3	rs12687599	3.57E-07	6.79E-01	5.56E-04	5.74E-04			ARMCX6	1	rs5945876	1.23E-02	1.26E-04	1.84E-05	9.79E-06
ZRSR2	3	rs6628945	8.27E-07	6.01E-01	1.12E-03	1.22E-03			ASB9	1	rs12687599; rs12687599; rs6628945	3.57E-07	6.79E-01	5.56E-04	5.74E-04
AIFM1	2	rs186814690	2.68E-02	2.41E-06	5.59E-05	5.06E-07			BEX5	1	rs776360932	2.60E-05	5.11E-02	4.29E-05	6.15E-06
APIS2	2	rs186814690	5.08E-01	1.68E-06	9.01E-03	1.31E-03	Syndromic	2	BHLHB9	1	rs73218354	8.14E-05	3.92E-04	1.04E-05	1.42E-07
APLN	2	rs186814690	2.68E-02	2.41E-06	5.59E-05	5.06E-07			BMX	1	rs6628945; rs12687599	8.27E-07	6.01E-01	1.12E-03	1.22E-03
ARHGAP36	2	rs186814690	2.68E-02	2.41E-06	5.59E-05	5.06E-07			CTPS2	1	rs186814690	5.08E-01	1.68E-06	9.01E-03	1.31E-03
ASB11	2	rs12687599; rs6628945	3.57E-07	6.79E-01	5.56E-04	5.74E-04			CXorf23	1	rs767542284	7.93E-04	2.62E-03	2.61E-06	3.01E-05
CASEB	2	rs6628945	8.27E-07	6.01E-01	1.12E-03	1.22E-03			EGFL6	1	rs12687599; rs6628945	3.57E-07	6.79E-01	5.56E-04	5.74E-04
DDX53	2	rs5926125	1.89E-04	1.04E-02	9.47E-06	7.30E-06	2	2	EIF1AX	1	rs767542284	7.93E-04	2.62E-03	2.61E-06	3.01E-05
ENDX2	2	rs186814690	2.68E-02	2.41E-06	5.59E-05	5.06E-07			ELF4	1	rs73218354; rs5958792	8.14E-05	3.92E-04	1.04E-05	1.42E-07
GPR119	2	rs186814690	2.68E-02	2.41E-06	5.59E-05	5.06E-07			FANCB	1	rs12687599	3.57E-07	6.79E-01	5.56E-04	5.74E-04
HDAC8	2	rs5960792	1.38E-04	2.57E-04	1.85E-06	1.73E-07	Syndromic	2	FIGF	1	rs6628945	8.27E-07	6.01E-01	1.12E-03	1.22E-03
HTR2C	2	rs191071511	1.08E-01	9.58E-06	7.07E-03	3.26E-06			GEMIN8	1	rs12687599; rs6628945	3.57E-07	6.79E-01	5.56E-04	5.74E-04
MBTPS2	2	rs767542284	7.93E-04	2.62E-03	2.61E-06	3.01E-05			GPMBE	1	rs12687599; rs6628945	3.57E-07	6.79E-01	5.56E-04	5.74E-04
OR13H1	2	rs186814690	2.68E-02	2.41E-06	5.59E-05	5.06E-07			GPFRASP1	1	rs5926125	1.89E-04	1.04E-02	9.47E-06	7.30E-06
PCDH9	2	rs12835197; rs5926125	4.33E-06	8.30E-02	3.94E-04	4.87E-06	1	4	IGSF1	1	rs73218354	8.14E-05	3.92E-04	1.04E-05	1.42E-07
PHEX	2	rs5926125; rs189525731; rs186125715	1.89E-04	1.04E-02	9.47E-06	7.30E-06			KLHL34	1	rs11827716	5.63E-04	4.36E-03	4.45E-04	8.40E-06
PIGA	2	rs6628945; rs12687599; rs186125715	8.27E-07	6.01E-01	1.12E-03	1.22E-03			MAGEB17	1	rs186125715	5.08E-01	1.68E-06	9.01E-03	1.31E-03
PTCHD1	2	rs5926125; rs5945876	1.89E-04	1.04E-02	9.47E-06	7.30E-06	1	3	MAP3K15	1	rs767542284	7.93E-04	2.62E-03	2.61E-06	3.01E-05
PCDH1X	1	rs184604300	2.25E-04	2.12E-02	4.92E-03	1.38E-05	2	2	MAP7D2	1	rs767542284	7.93E-04	2.62E-03	2.61E-06	3.01E-05
PTCHD1-AS	2	rs5926125; rs5945876	1.89E-04	1.04E-02	9.47E-06	7.30E-06	2	2	MOSPD2	1	rs12687599	3.57E-07	6.79E-01	5.56E-04	5.74E-04
RAB33A	2	rs186814690; rs11827716	2.68E-02	2.41E-06	5.59E-05	5.06E-07			NAP1L2	1	rs776360932; rs5926125	2.60E-05	5.11E-02	4.29E-05	6.15E-06
RBMX2	2	rs186814690	2.68E-02	2.41E-06	5.59E-05	5.06E-07			NHS	1	rs773693168	7.96E-01	9.80E-06	3.75E-03	1.63E-03
SI00G	2	rs186125715	1.31E-03	5.08E-01	1.68E-06	9.01E-03			PABPC1L2A	1	rs186125715; rs189525731	3.79E-02	1.04E-05	1.51E-04	2.37E-06
SCML1	2	rs773693168	7.96E-01	9.80E-06	3.75E-03	1.63E-03			PABPC1L2B	1	rs186125715; rs189525731	3.79E-02	1.04E-05	1.51E-04	2.37E-06
SRPX2	2	rs12835197; rs186125715; rs189525731	4.33E-06	8.30E-02	3.94E-04	4.87E-06			PDHA1	1	rs767542284	7.93E-04	2.62E-03	2.61E-06	3.01E-05
TMEM27	2	rs6628945; rs186125715; rs189525731	8.27E-07	6.01E-01	1.12E-03	1.22E-03			PHKA2	1	rs767542284	7.93E-04	2.62E-03	2.61E-06	3.01E-05
TNMD	2	rs12835197; rs189525731	4.33E-06	8.30E-02	3.94E-04	4.87E-06			PIR	1	rs6628945; rs12687599	8.27E-07	6.01E-01	1.12E-03	1.22E-03
TSPAN6	2	rs12835197	4.33E-06	8.30E-02	3.94E-04	4.87E-06			PLS3	1	rs5945876	1.23E-02	1.26E-04	1.84E-05	9.79E-06
YY2	2	rs767542284; rs776360932	7.93E-04	2.62E-03	2.61E-06	3.01E-05			PPEF1	1	rs767542284	7.93E-04	2.62E-03	2.61E-06	3.01E-05
ZNF280C	2	rs186814690; rs5945876	2.68E-02	2.41E-06	5.59E-05	5.06E-07			PRPS2	1	rs12687599; rs6628945	3.57E-07	6.79E-01	5.56E-04	5.74E-04
ZNF645	2	rs5926125; rs189525731	7.30E-06	1.89E-04	1.04E-02	9.47E-06			RAB40AL	1	rs186125715	3.79E-02	1.04E-05	1.51E-04	2.37E-06
DMD	1	rs5945876	1.23E-02	1.26E-04	1.84E-05	9.79E-06	Syndromic	3	RAB9A	1	rs12687599; rs6628945	3.57E-07	6.79E-01	5.56E-04	5.74E-04
TRAPP2	1	rs6628945; rs12687599	8.27E-07	6.01E-01	1.12E-03	1.22E-03			RBBP7	1	rs773693168	7.96E-01	9.80E-06	3.75E-03	1.63E-03
SYAP1	1	rs186125715	1.31E-03	5.08E-01	1.68E-06	9.01E-03	2	yes	REPS2	1	rs773693168	7.96E-01	9.80E-06	3.75E-03	1.63E-03
CHKSR2	1	rs5945876	1.23E-02	1.26E-04	1.84E-05	9.79E-06	2	4	RS1	1	rs767542284	7.93E-04	2.62E-03	2.61E-06	3.01E-05
GLRA2	1	rs12687599	3.57E-07	6.79E-01	5.56E-04	5.74E-04	2	3	SCML2	1	rs767542284	7.93E-04	2.62E-03	2.61E-06	3.01E-05
OPD1	1	rs6628945; rs12687599	8.27E-07	6.01E-01	1.12E-03	1.22E-03	2	3	TAB3	1	rs12835197	4.33E-06	8.30E-02	3.94E-04	4.87E-06
CDKL5	1	rs767542284	7.93E-04	2.62E-03	2.61E-06	3.01E-05	1	4	TCEAL2	1	rs11827716	5.63E-04	4.36E-03	4.45E-04	8.40E-06
GPFRASP2	1	rs140894960	7.01E-02	9.58E-06	3.95E-03	1.76E-06		yes	TCEAL6	1	rs5945876	1.23E-02	1.26E-04	1.84E-05	9.79E-06
NMF5	1	rs140894960	7.01E-02	9.58E-06	3.95E-03	1.76E-06		yes	TCEANC	1	rs6628945; rs12687599	8.27E-07	6.01E-01	1.12E-03	1.22E-03
SH3BP1	1	rs767542284	7.93E-04	2.62E-03	2.61E-06	3.01E-05		2	TINM8A	1	rs186125715; rs189525731	3.79E-02	1.04E-05	1.51E-04	2.37E-06
ACE2	1	rs6628945; rs12687599	8.27E-07	6.01E-01	1.12E-03	1.22E-03			TMSB15A	1	rs776360932	2.60E-05	5.11E-02	4.29E-05	6.15E-06
ARMCX1	1	rs189525731; rs186125715; rs186125715; rs189525731	1.63E-02	3.32E-06	3.86E-05	3.40E-07			TXLNG	1	rs186125715	1.31E-03	5.08E-01	1.68E-06	9.01E-03
ARMCX2	1	rs5926125	1.89E-04	1.04E-02	9.47E-06	7.30E-06			ZMAT1	1	rs5945876	1.23E-02	1.26E-04	1.84E-05	9.79E-06
ARMCX3	1	rs139802025	8.35E-05	7.82E-03	5.33E-04	2.44E-06									

18

19 **Table S6. SFARI and EAGLE genes on X previously implicated in ASD.** In red are
 20 highlighted the genes that were also found in our X-chromosome results with XWAS approach
 21 (13 genes), and sdMAF (1 gene).

gene-symbol	gene-name	chromosome	genetic-category	gene-score	syndromic	eagle	number-of-reports
AFF2	AF4/FMR2 family, member 2	X	Rare Single Gene Mutation, Syndromic	1	0	8.7	21
AGTR2	angiotensin II receptor, type 2	X	Rare Single Gene Mutation	2	0		5
AP1S2	adaptor related protein complex 1 sigma 2 subunit	X	Rare Single Gene Mutation, Syndromic		1		7
ARHGEP9	Cdc42 guanine nucleotide exchange factor (GEF) 9	X	Rare Single Gene Mutation, Syndromic	1	1	14.2	17
ARX	aristalless related homeobox	X	Rare Single Gene Mutation, Syndromic	1	1	13.8	26
AR	androgen receptor	X	Genetic Association	2	0		6
ASMT	acetylserotonin O-methyltransferase	X,Y	Rare Single Gene Mutation, Genetic Association	2	0		11
ATRX	alpha thalassemia/mental retardation syndrome X-linked	X	Rare Single Gene Mutation, Syndromic, Functional	1	0		32
BCORL1	BCL6 corepressor like 1	X	Rare Single Gene Mutation, Syndromic		1		8
BRWD3	bromodomain and WD repeat domain containing 3	X	Rare Single Gene Mutation, Syndromic		1		9
CACNA1F	calcium channel, voltage-dependent, alpha 1F	X	Rare Single Gene Mutation, Genetic Association	2	0		9
CASK	calcium/calmodulin dependent serine protein kinase	X	Rare Single Gene Mutation, Syndromic, Functional	1	0		25
CD99L2	CD99 molecule like 2	X	Genetic Association	2	0		1
CDK16	cyclin dependent kinase 16	X	Rare Single Gene Mutation	2	0		3
CDKL5	cyclin-dependent kinase-like 5	X	Rare Single Gene Mutation, Syndromic, Functional	1	1		55
CHM	CHMRab escort protein	X	Rare Single Gene Mutation	3	0		7
CLCN4	chloride voltage-gated channel 4	X	Rare Single Gene Mutation, Syndromic	2	1		11
CNKSR2	connector enhancer of kinase suppressor of Ras 2	X	Rare Single Gene Mutation, Syndromic, Functional	2	1		12
DDX3X	DEAD (Asp-Glu-Ala-Asp) box helicase 3, X-linked	X	Rare Single Gene Mutation, Syndromic, Functional	1	1		48
DDX53	DEAD (Asp-Glu-Ala-Asp) box polypeptide 53	X	Rare Single Gene Mutation	2	0	5.25	5
DMD	dystrophin (muscular dystrophy, Duchenne and Becker types)	X	Rare Single Gene Mutation, Syndromic, Genetic Association	2	1		43
FAM47A	family with sequence similarity 47 member A	X	Rare Single Gene Mutation	2	0	0.45	1
FGF13	fibroblast growth factor 13	X	Syndromic	3	1		2
FLNA	filamin A	X	Rare Single Gene Mutation, Functional	3	0		9
FMR1	fragile X mental retardation 1	X	Rare Single Gene Mutation, Syndromic, Genetic Association, Functional	1	1		63
FRMPD4	FERM and PDZ domain containing 4	X	Rare Single Gene Mutation, Syndromic		1		8
GABRA3	Gamma-aminobutyric acid (GABA) A receptor, alpha 3	X	Rare Single Gene Mutation, Syndromic		1		3
GLRA2	glycine receptor, alpha 2	X	Rare Single Gene Mutation, Functional	2	0		17
GPC4	glypican 4	X	Rare Single Gene Mutation	2	0		2
GRIA3	glutamate ionotropic receptor AMPA type subunit 3	X	Rare Single Gene Mutation, Syndromic, Functional		1		15
HCFC1	host cell factor C1	X	Rare Single Gene Mutation, Syndromic		1		12
HDAC8	histone deacetylase 8	X	Rare Single Gene Mutation, Syndromic		1		11
HNRNP2	heterogeneous nuclear ribonucleoprotein H2	X	Rare Single Gene Mutation, Syndromic	1	0		19
HUWE1	CT, UBA and WWE domain containing 1, E3 ubiquitin protein ligase	X	Rare Single Gene Mutation, Syndromic		1		25
IL1RAP1	interleukin 1 receptor accessory protein-like 1	X	Rare Single Gene Mutation	2	0		27
IL1RAP2	interleukin 1 receptor accessory protein-like 2	X	Rare Single Gene Mutation, Genetic Association	2	0		2
IQSEC2	IQ motif and Sec7 domain 2	X	Rare Single Gene Mutation, Syndromic, Functional	1	1		49
KDM5C	lysine demethylase 5C	X	Rare Single Gene Mutation, Syndromic, Functional	1	0		38
KDM6A	lysine demethylase 6A	X	Rare Single Gene Mutation, Syndromic	2	0		14
LAS1L	LAS1 like ribosome biogenesis factor	X	Rare Single Gene Mutation, Syndromic	3	0		5
MAOA	monoamine oxidase A	X	Rare Single Gene Mutation, Syndromic, Genetic Association, Functional	2	0		20
MAOB	monoamine oxidase B	X	Rare Single Gene Mutation, Syndromic, Genetic Association, Functional	2	0		6
MECP2	Methyl CpG binding protein 2	X	Rare Single Gene Mutation, Syndromic, Functional	1	1	106.65	119
MSL3	MSL complex subunit 3	X	Rare Single Gene Mutation, Syndromic	1	1		6
NAA10	N-alpha-acetyltransferase 10, NatA catalytic subunit	X	Rare Single Gene Mutation, Syndromic	3	1		13
NEXMIF	neurite extension and migration factor	X	Rare Single Gene Mutation, Syndromic, Functional	1	0		33
NLGN3	neuroligin 3	X	Rare Single Gene Mutation, Genetic Association, Functional	1	0	6.5	45
NLGN4X	neuroligin 4, X-linked	X	Rare Single Gene Mutation, Syndromic, Genetic Association, Functional	1	0	12	42
OCLR	oculocerebrorenal syndrome of Lowe	X	Rare Single Gene Mutation, Syndromic		1		9
OFD1	OFD1, centriole and centriolar satellite protein	X	Rare Single Gene Mutation, Syndromic	2	0		5
OPHN1	oligophrenin 1	X	Rare Single Gene Mutation, Syndromic	2	0		18
PCDH11X	protocadherin 11 X-linked	X	Rare Single Gene Mutation	2	0		4
PCDH19	protocadherin 19	X	Rare Single Gene Mutation, Syndromic, Functional	1	1		56
PHF8	PHD finger protein 8	X	Rare Single Gene Mutation, Syndromic		1		13
PJA1	praja ring finger ubiquitin ligase 1	X	Syndromic	3	1		1
PLXNA3	plexin A3	X	Rare Single Gene Mutation, Syndromic	2	0		8
PTCHD1	patched domain containing 1	X	Rare Single Gene Mutation, Genetic Association	1	0	0	15
PTCHD1-AS	PTCHD1antisense RNA (head to head)	X	Rare Single Gene Mutation	2	0	17.6	3
RAB39B	RAB39B, member RAS oncogene family	X	Rare Single Gene Mutation, Syndromic, Functional	2	0		19
RHOXF1	Rhox homeobox family, member 1	X	Genetic Association	2	0		3
RLIM	Ring finger protein, LIM domain interacting	X	Rare Single Gene Mutation, Syndromic		1		6
RPL10	ribosomal protein L10	X	Rare Single Gene Mutation, Syndromic	2	0		14
RPS6KA3	Ribosomal protein S6 kinase, 90kDa, polypeptide 3	X	Rare Single Gene Mutation, Syndromic	2	1		18
SHOX	short stature homeobox	X,Y	Rare Single Gene Mutation	2	0		3
SLC6A8	solute carrier family 6 (neurotransmitter transporter, creatine), member 8	X	Rare Single Gene Mutation, Syndromic	2	0		24
SLC7A3	solute carrier family 7 (cationic amino acid transporter, y+ system), member 3	X	Rare Single Gene Mutation	2	0		2
SLC9A6	solute carrier family 9 (sodium/hydrogen exchanger), member 6	X	Rare Single Gene Mutation, Syndromic, Functional	1	1		21
SLITRK2	SLIT and NTRK like family member 2	X	Rare Single Gene Mutation, Syndromic, Functional		1		7
SMC1A	structural maintenance of chromosomes 1A	X	Rare Single Gene Mutation, Syndromic		1		16
SYAP1	Synapse associated protein 1	X	Rare Single Gene Mutation	2	0		2
SYN1	Synapsin 1	X	Rare Single Gene Mutation, Functional	1	0	2.35	27
SYP	synaptophysin	X	Rare Single Gene Mutation	3	0		4
TAF1	TATA-box binding protein associated factor 1	X	Rare Single Gene Mutation, Syndromic		1		17
TBX22	T-box transcription factor 22	X	Rare Single Gene Mutation	3	0		2
TCEAL1	transcription elongation factor A like 1	X	Rare Single Gene Mutation, Syndromic	3	1		2
TFE3	transcription factor binding to IGDM enhancer 3	X	Rare Single Gene Mutation, Syndromic		1		5
TMLHE	trimethyllysine hydroxylase, epsilon	X	Rare Single Gene Mutation, Genetic Association, Functional	2	0		10
TRPC5	transient receptor potential cation channel subfamily C member 5	X	Rare Single Gene Mutation	3	0		7
TSPAN7	tetraspanin 7	X	Rare Single Gene Mutation, Functional	2	0		9
TBL1X	transducin (beta)-like 1X-linked	X	Genetic Association	2	0		1
UPF3B	UPF3B, regulator of nonsense mediated mRNA decay	X	Rare Single Gene Mutation, Syndromic	1	1		17
USP9X	ubiquitin specific peptidase 9 X-linked	X	Rare Single Gene Mutation, Syndromic, Functional	1	1		15
VSIG4	V-set and immunoglobulin domain containing 4	X	Rare Single Gene Mutation	2	0		3
WNK3	WNK lysine deficient protein kinase 3	X	Rare Single Gene Mutation	2	0		6
ZMYM3	zinc finger MYM-type containing 3	X	Rare Single Gene Mutation, Syndromic, Genetic Association		1		8
ZNF711	zinc finger protein 711	X	Rare Single Gene Mutation	2	0		5

22

23

Autosomes Quality Control Process

Autosomes		
After QC: Filter biallelic variants that are common with the ancestry reference population, plus SmartQC		
	Samples	Variants
MSSNG	9,620	1,828,586
SSC	9,209	1,847,146
SPARK	12,519	1,833,775
MGRB	2,572	1,629,895
HostSeq	10,023	1,726,650
1KGP	3,202	1,864,496



	Samples	Variants
Merge MSSNG, SSC, SPARK, MGRB, HostSeq	22,242	1,407,803
XWAS Cleaning	21,089	1,075,065
Ancetry Check		
Merge with 1KGP	24,291	1,062,930
LD filter	24,291	132,551
Remove problematic regions	24,291	131,291
list samples >75% European ancestry based on ADMIXTURE results	15,854	
Filter samples >75% european ancestry based on ADMIXTURE results	15,854	1,075,065
XWAS final input file	15,854	1,075,065

X Chromosome Quality Control Process

X chromosome				
	Begin		After smartQC	
	Samples	Variants	Samples	Variants
MSSNG	9,621	6,539,590	9,552	3,919,536
SSC	9,209	4,940,291	9,172	3,356,074
SPARK	12,519	6,328,900	12,474	3,947,717
MGRB	2,572	2,645,253	2,561	1,739,780
HostSeq	10,000	2,389,836	9,802	1,455,047



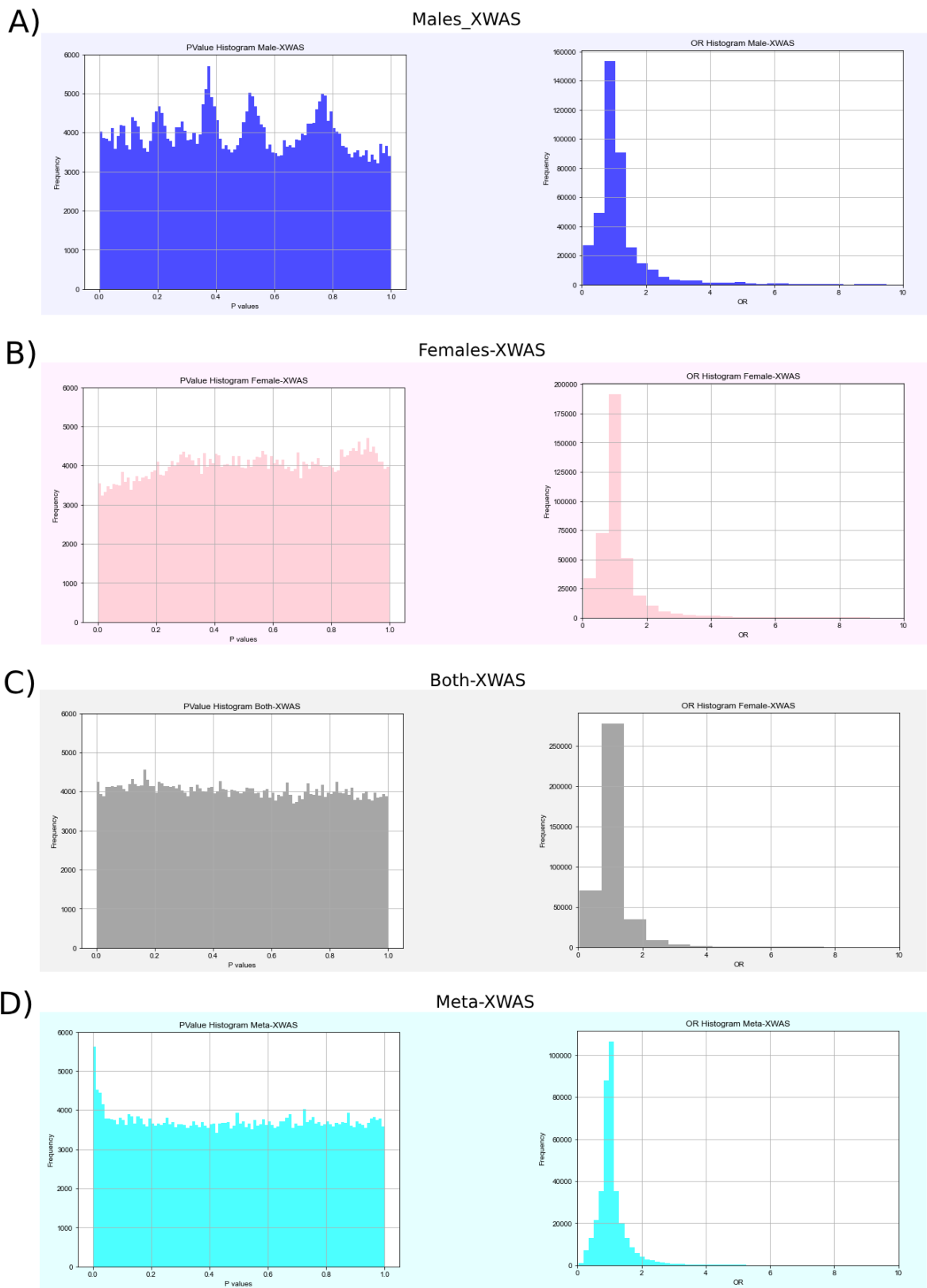
	Samples	Variants
Merge MSSNG, SSC, SPARK, MGRB, HostSeq	22,242	538,856
XWAS Cleaning	21,089	418,652
Filter samples >75% European ancestry based on ADMIXTURE results	15,854	418,652
XWAS final input file	15,854	418,652



	Males	Females	Both
MSSNG	2194	520	2714
SSC	1645	256	1901
SPARK	1800	458	2258
HostSeq	2691	3765	6456
MGRB	1220	1305	2525
Cases	5639	1234	6873
Controls	3911	5070	8981
Total	9550	6304	15854

24

25 **Figure S1.** Quality Control specifications. The number of samples and variants remaining
 26 after each quality control step for autosomes and the X chromosome are shown on the left and
 27 right, respectively.

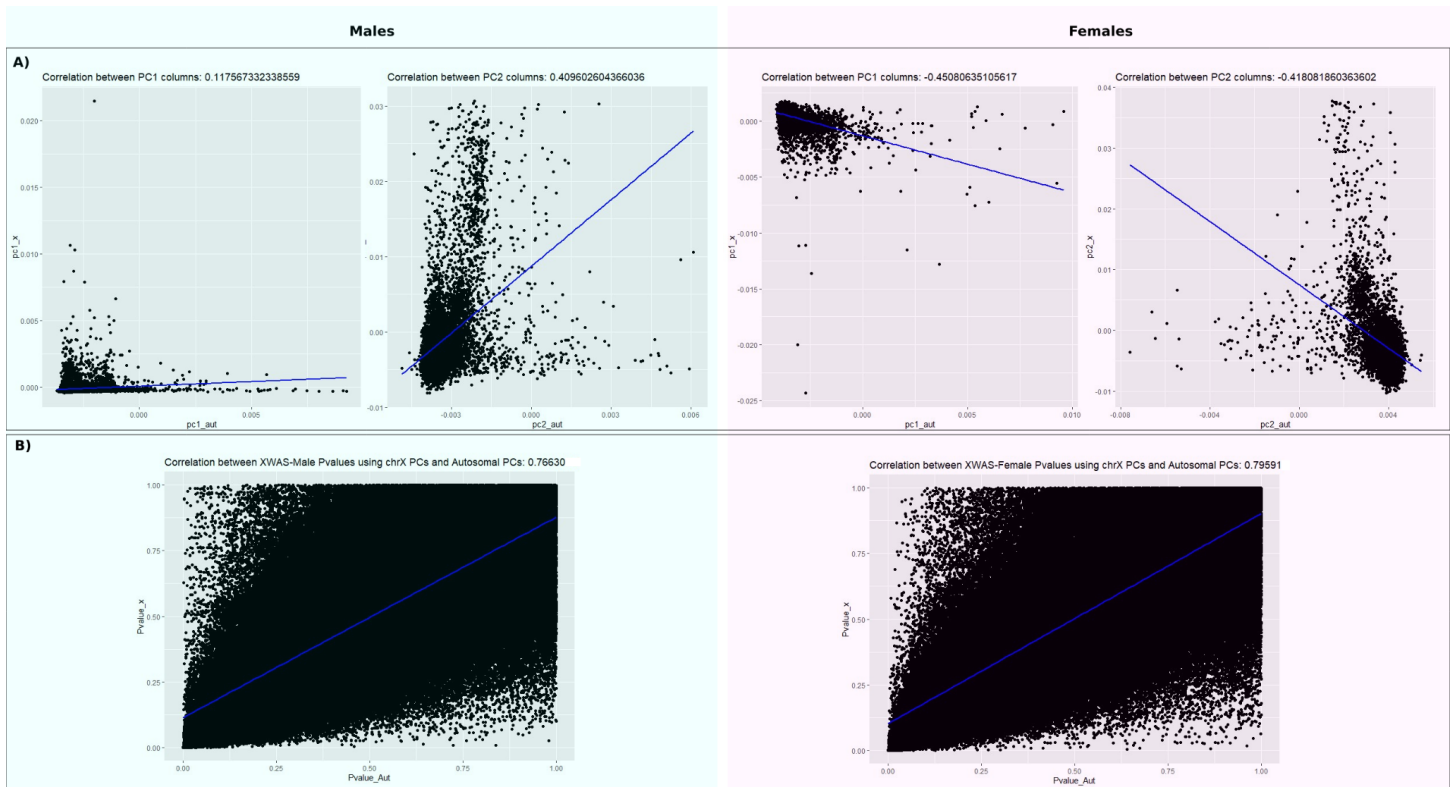


28

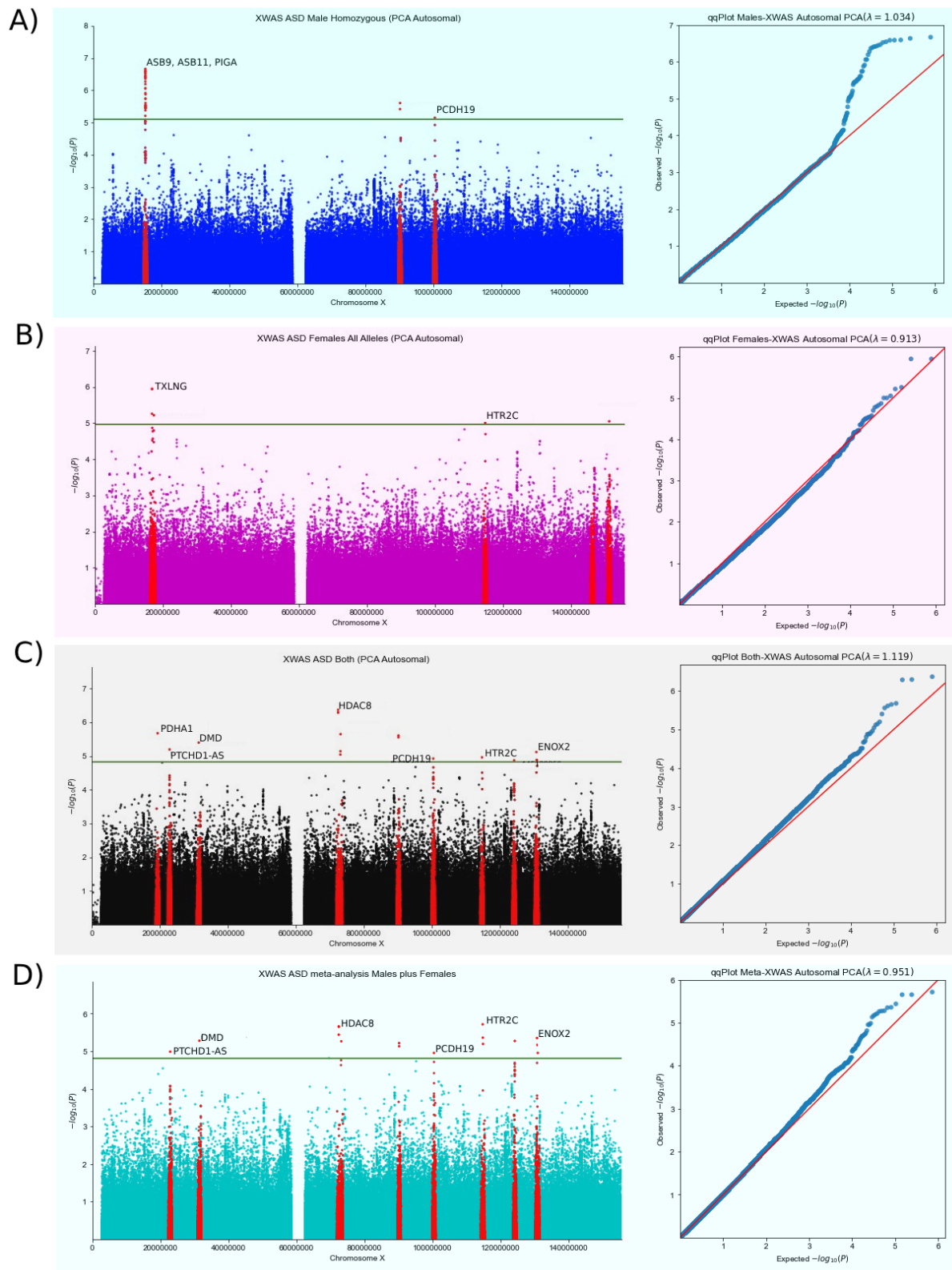
29 **Figure S2.** P-value and OR Histograms. Each panel shows the p-value histogram (right part)
 30 and OR histogram (left part) resultant from our XWAS analysis for (A) Males-XWAS, B)

31 Females-XWAS, C) Both-XWAS, and D) the Meta-XWAS, a meta-analysis from the sex
32 stratified approaches implemented on GWAMA.

33



34 **Figure S3.** Correlation between XWAS results using PCs from Autosomal and X chromosomal
35 data. A) Correlation between PC1 and PC2 from Autosomal chromosomes on the horizontal
36 axis and X chromosome in the vertical axis, in blue from males and in pink from females. B)
37 Correlation between p-value results coming from XWAS using Autosomal data for PCs
38 inference on the horizontal axis and XWAS using X chromosome data for PCs inference on
39 the vertical axis.



40

41 **Figure S4.** Each panel shows the Manhattan (right part) and qqPlot (left part) resultant from
 42 our XWAS analysis using the top 10 autosomal Principal Components as covariates (A) Males-

43 XWAS, B) Females-XWAS, C) Both-XWAS, and D) the Meta-XWAS, a meta-analysis from the
44 sex stratified approaches implemented on GWAMA.