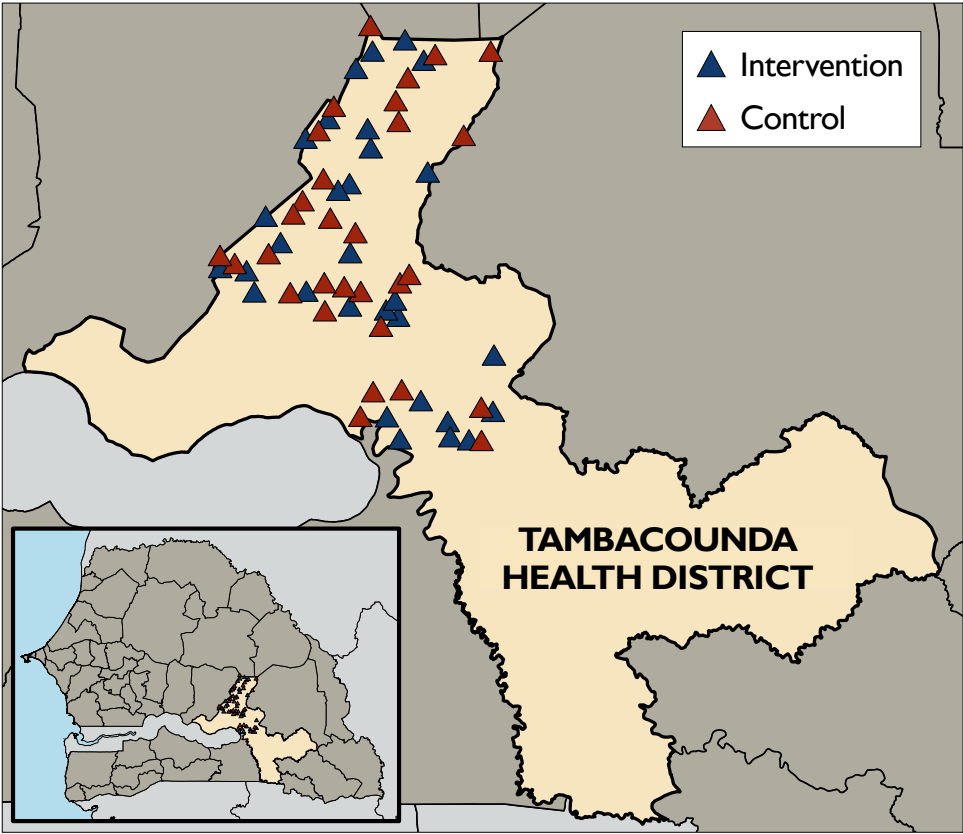


Mass drug administration to reduce malaria incidence in a low-to-moderate endemic setting: short-term impact results from a cluster randomised controlled trial in Senegal

Supplementary Appendix

Appendix 1. Map of study site



Appendix 2. Dosing regimens for dihydroartemisinin-piperaquine, single-low dose primaquine, and sulfadoxine-pyrimethamine + amodiaquine

Mass drug administration (intervention arm):

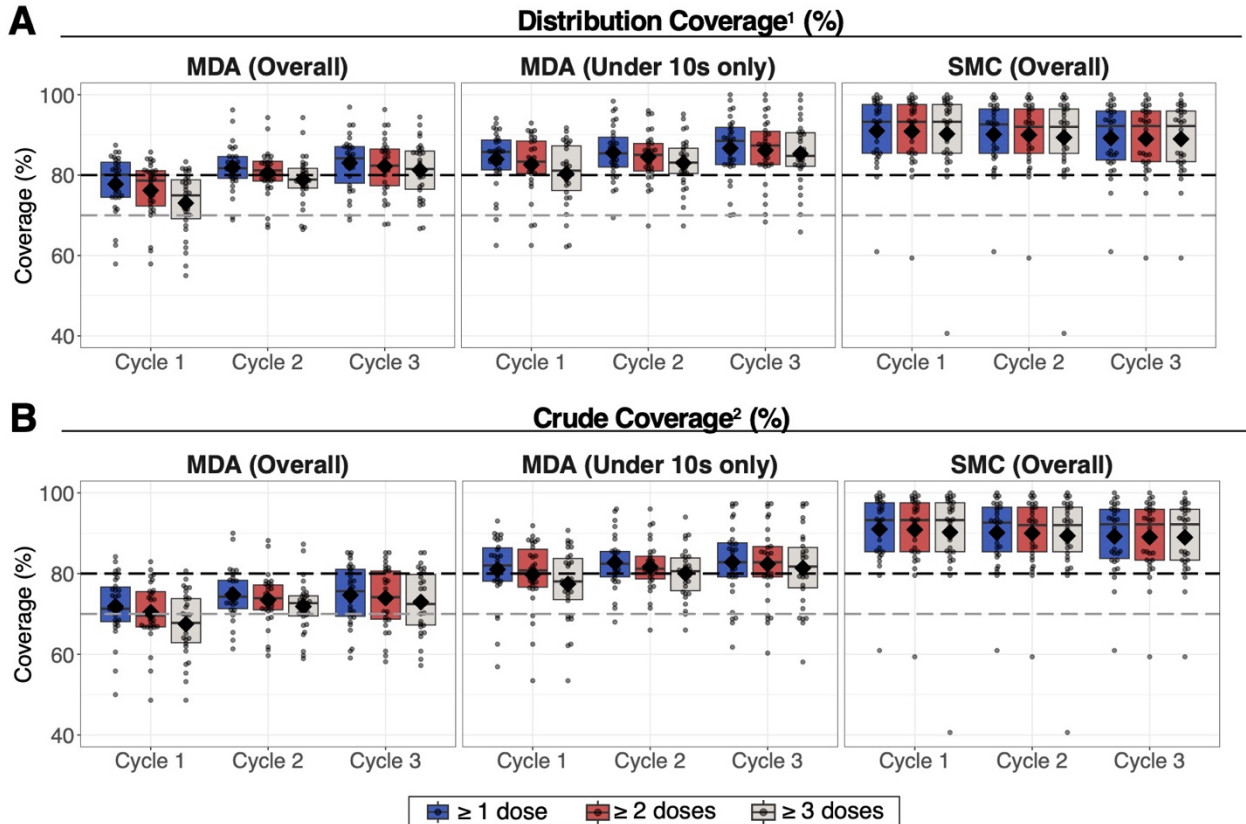
Dihydroartemisinin-piperaquine			
Age	Number of tablets containing 40 mg dihydroartemisinin and 320 mg piperaquine		
	Day 1	Day 2	Day 3
3 to 24 months	0·5	0·5	0·5
2 to 7 years	1	1	1
8 to 10 years	1·5	1·5	1·5
11 to 14 years	2	2	2
15+ years	3	3	3

Primaquine (given on day 1)			
Age	Number of tablets	Dosage (mg)	Volume (ml) of water used to dilute tablets
2 to 4 years	0·5	3·75	3
5 to 7 years	0·75	5·625	5
8 to 10 years	1	7·5	10
11 to 13 years	1·5	11·25	--
14+ years	2	15	--

Seasonal malaria chemoprevention (control arm):

Sulfadoxine-pyrimethamine + amodiaquine (SP-AQ)			
Age	Number of tablets containing 500 mg sulfadoxine and 25 mg pyrimethamine, and 150 mg amodiaquine		
	Day 1	Day 2	Day 3
3 to 11 months	0·5 tablet SP + 0·5 tablet AQ	0·5 tablet AQ	0·5 tablet AQ
12 to 59 months	1 tablet SP + 1 tablet AQ	1 tablet AQ	1 tablet AQ
60 to 120 months	1·5 tablets SP + 1·5 tablets AQ	1·5 tablets AQ	1·5 tablets AQ

Appendix 3. Boxplot of village-level distribution (A) and crude (B) coverage of mass drug administration (intervention) and seasonal malaria chemoprevention (control). Coverage is separately reported for overall population and for those under 10 years of age for comparability of MDA and SMC coverage.



Abbreviations: MDA = mass drug administration; SMC = seasonal malaria chemoprevention

Boxes indicate the interquartile range of village-level coverage; horizontal line in each box indicates median; diamond point represents mean across villages; circle points indicate coverage for each village.

¹ Distributional coverage = # of residents who received study drugs / # of eligible residents targeted for campaign.

Denominator includes absences and refusers of the study drugs, but excludes pregnant women (for MDA), persons with a self-reported illness, and persons who emigrated out of study area.

² Crude coverage = # of residents who received study drugs / # of persons targeted for the campaign.

Denominator includes those who refused the study drugs, absences, and those who were ineligible to receive MDA due to pregnancy, self-reported illness, but excludes those who emigrated out of the study area.

Appendix 4. Reasons for non-coverage of MDA and SMC.

Intervention (MDA)	Cycle 1			Cycle 2			Cycle 3		
	Day 1	Day 2	Day 3	Day 1	Day 2	Day 3	Day 1	Day 2	Day 3
Targeted individuals ¹	8931	8931	8931	9571	9571	9571	9703	9703	9703
Received DP	6449 (72.2%)	6310 (70.7%)	6163 (69.0%)	7089 (74.1%)	6986 (73.0%)	6884 (71.9%)	7237 (74.6%)	7162 (73.8%)	7085 (73.0%)
Received SLD-PQ ²	6286/8670 (72.5%)	--	--	6949/9331 (74.5%)	--	--	7199/9521 (75.6%)	--	--
Absent	1649 (18.5%)	1758 (19.7%)	1888 (21.1%)	1419 (14.8%)	1482 (15.5%)	1568 (16.4%)	1311 (13.5%)	1361 (14.0%)	1423 (14.7%)
Refused	121 (1.4%)	125 (1.4%)	129 (1.4%)	146 (1.5%)	161 (1.7%)	169 (1.8%)	131 (1.4%)	135 (1.4%)	140 (1.4%)
Self-reported illness	458 (5.1%)	484 (5.4%)	497 (5.6%)	613 (6.4%)	638 (6.7%)	646 (6.7%)	701 (7.2%)	722 (7.4%)	732 (7.5%)
Pregnant/Breastfeeding	254 (2.8%)	254 (2.8%)	254 (2.8%)	304 (3.2%)	304 (3.2%)	304 (3.2%)	323 (3.3%)	323 (3.3%)	323 (3.3%)
Control (SMC)	Cycle 1			Cycle 2			Cycle 3		
	Day 1	Day 2	Day 3	Day 1	Day 2	Day 3	Day 1	Day 2	Day 3
Targeted individuals	3492	3492	3492	3489	3489	3489	3487	3487	3487
Received SP-AQ	3202 (91.7%)	3187 (91.3%)	3199 (91.6%)	3174 (91.0%)	3159 (90.5%)	3170 (90.9%)	3146 (90.2%)	3141 (90.1%)	3139 (90.0%)
Absent	234 (6.7%)	248 (7.1%)	236 (6.8%)	247 (7.1%)	261 (7.5%)	249 (7.1%)	261 (7.5%)	261 (7.5%)	262 (7.5%)
Refused	21 (0.6%)	22 (0.6%)	22 (0.6%)	21 (0.6%)	22 (0.6%)	22 (0.6%)	27 (0.8%)	28 (0.8%)	28 (0.8%)
Self-reported illness	35 (1.0%)	35 (1.0%)	35 (1.0%)	47 (1.3%)	47 (1.3%)	48 (1.4%)	53 (1.5%)	57 (1.6%)	58 (1.7%)

Abbreviations: DP = dihydroartemisinin-piperazine; MDA = mass drug administration; SLD-PQ = single low-dose primaquine; SMC = seasonal malaria chemoprevention

¹ Targeted individuals includes new residents that entered the study area, but excludes deaths and those who emigrated out of the study area.

² % calculated based on PQ eligibility (≥ 2 years of age).

Appendix 5. Safety outcomes reported through passive surveillance.

Passive surveillance	Intervention (MDA)	Control (SMC)	p-value
Participants with any AE, n/N (%)¹			
All cycles	67/20 887 (0·003%)	2/9524 (0·0002%)	< 0·0001
First cycle	46/6506 (0·7%)	0/3202 (0%)	< 0·0001
Second cycle	13/7125 (0·2%)	2/3174 (0·1%)	0·14
Third cycle	8/7256 (0·1%)	0/3146 (0%)	0·062
Frequency of adverse events, n (IR)²			
All cycles	129 (0·0062)	4 (0·00042)	< 0·0001
First cycle	97 (0·015)	0 (0)	< 0·0001
Second cycle	20 (0·0028)	4 (0·0013)	0·13
Third cycle	12 (0·0017)	0 (0)	0·013
Most common adverse events, n/N (%)			
Gastrointestinal issues	59/129 (45·7%)	3/4 (75%)	0·25
Headache	33/129 (25·6%)	0/4 (0%)	0·24
Fever	22/129 (17·1%)	1/4 (25%)	0·37
Other	15/129 (11·6%)	0/4 (0%)	0·47
Severity of AEs, n/N (%)			
Mild	129/129 (100%)	4/4 (100%)	--
Moderate	0/129 (0%)	0/4 (0%)	--
Severe	0/129 (0%)	0/4 (0%)	--
Any serious AEs, n/N (%)	0/129 (0%)	0/4 (0%)	--

Abbreviations: AE = adverse event; IR = incidence rate

¹ Denominators represent those who received at least one dose of study drug.

² Incidence rate represents events per person-month at-risk. Denominators for incidence rate calculated based on number of persons who received at least one dose of study drug for the time of observation each person was monitored for adverse events.

Appendix 6. Prevalence of drug resistance markers.

Mutations	Intervention		Control		p-value ¹
	Baseline (n=128)	Endline (n=58)	Baseline (n=141)	Endline (n=106)	
PfK13					
C580Y	0% (0/123)	0% (0/58)	0% (0/135)	0% (0/104)	--
PfDHPS					
K540E	0% (0/128)	0% (0/58)	0% (0/141)	0% (0/106)	--
A437G	82% (96/117)	87% (48/55)	81% (103/127)	87% (86/99)	0.94
A581G	0% (0/128)	0% (0/58)	0% (0/141)	0% (0/106)	--
A613S/T	14% (18/126)	5% (3/57)	16% (23/140)	12% (12/101)	0.33
PfDHFR					
N51I	100% (126/126)	100% (56/56)	100% (139/139)	100% (105/105)	--
C59R	100% (126/126)	100% (56/56)	100% (139/139)	100% (105/105)	--
S108N	75% (88/117)	58% (32/55)	77% (105/137)	60% (61/102)	0.96
I164L	12% (15/128)	2% (1/54)	12% (17/141)	7% (1/101)	0.24
PfCRT					
K76T	38% (48/127)	35% (20/57)	46% (63/138)	44% (46/104)	0.87
PfMDR1					
N86Y	2% (3/128)	0% (0/58)	5% (7/141)	0% (0/106)	0.28
Y184F	67% (80/120)	64% (37/58)	81% (107/132)	64% (68/106)	0.19

Abbreviations: Pf = *Plasmodium falciparum*; K13 = Kelch 13; DHPS = dihydropteroate synthase; DHFR = dihydrofolate reductase; CRT = chloroquine resistance transporter; MDR1 = multidrug resistance 1

¹ P-value computed using Poisson regression with robust standard errors, which compares relative change in prevalence before-and-after intervention between groups.

Appendix 7. Stratified analyses of intervention effectiveness on RDT-confirmed malaria incidence during peak transmission season (July-December).

Study outcomes	Average incidence per 1,000 (events / population)				Intervention effect, 1-ratio of IRRs [95% CI] ¹	
	Intervention (MDA)		Control		Unadjusted	Adjusted ²
	2020	2021	2020	2021		
DSDOM at baseline³						
Yes	258	87	275	188	63% [41%, 77%]	60% [34%, 76%]
No	28	105	61	145	-170% [-27%, -474%]	-15% [-289%, 66%]

Abbreviations: IRR = incidence rate ratio; MDA = mass drug administration; SMC = seasonal malaria chemoprevention

¹ Intervention effect estimated using mixed effects Poisson regression with village-level random intercepts.

² Adjusted for DSDOM at baseline, village population size of children <10 years of age, distance from health post, baseline parasite prevalence by microscopy, and village population size in 2019.

³ 20 out of 30 clusters in the intervention arm and 20 out of 30 clusters in the control arm contributed to the “Yes” category of the DSDOM at baseline analyses. Nineteen out of 20 (95%) clusters without DSDOM at baseline were defined as “Low” transmission intensity at baseline.