

## SUPPLEMENTARY DATA

### The impact of genome-wide histocompatibility on liver transplantation outcomes

Semenova M<sup>1</sup>, Liukkonen V<sup>2,3</sup>, Markkinen S<sup>1</sup>, Färkkilä M<sup>2</sup>, Nordin A<sup>4</sup>, Partanen J<sup>1</sup>, Åberg F<sup>4</sup>, Hyvärinen K<sup>1\*</sup>

1. *Finnish Red Cross Blood Service, Research and Development, Helsinki, Finland*
2. *University of Helsinki, Faculty of Medicine, Helsinki, Finland*
3. *North Carelia Central Hospital, Gastroenterology, Joensuu, Finland*
4. *Transplantation and Liver Surgery, Helsinki University Hospital and University of Helsinki, Helsinki, Finland*

Short title: Genome-wide mismatches in liver transplantation

Corresponding author:

Kati Hyvärinen, PhD, Associate professor

Finnish Red Cross Blood Service

Research and Development

Biomedicum Helsinki 1, Haartmaninkatu 8, 00290 Helsinki, FINLAND

Phone +358 40 920 3083

kati.hyvarinen@bloodservice.fi

## Table of Contents

Supplementary Table S1. Number of deletion-tagging variant mismatches in the study cohort. ....	3
Supplementary Table S2. Summary statistics of adjusted Cox proportional hazards models analyzing the effect of mismatches in 40 deletion-tagging variants and time to acute rejection .....	5
Supplementary Table S3. Summary statistics of adjusted Cox proportional hazards models analyzing the effect of mismatches in 40 deletion-tagging variants and time to late rejection .....	6
Supplementary Table S4. Summary statistics of adjusted Cox proportional hazards models analyzing the effect of mismatches in 40 deletion-tagging variants and time to graft loss.....	7
Supplementary Table S5. Summary statistics of adjusted Cox proportional hazards models analyzing the effect of mismatches in 40 deletion-tagging variants and time to death. ....	8
Supplementary Table S6. Adjusted Cox proportional hazards model for rs11985201 mismatch and time to acute rejection. ....	9
Supplementary Table S7. Adjusted Cox proportional hazards model for rs2342606 mismatch and time to acute rejection. ....	10
Supplementary Table S8. Adjusted Cox proportional hazards model for rs1944862 mismatch and time to late rejection. ....	11
Supplementary Table S9. Adjusted Cox proportional hazards model for rs2174926 mismatch and time to graft loss. ....	12
Supplementary Figure S1. Flow of genetic variants in in pre- and post-imputation processes. ....	13
Supplementary Figure S2. Kaplan-Meier plot displaying the effect of quartiles of missense variant mismatches of all proteins on late rejection -free survival. ....	14
Supplementary Figure S3. Kaplan-Meier plot displaying the effect of quartiles of missense variant mismatches of transmembrane proteins only on graft loss -free survival.....	15
Supplementary Figure S4. Kaplan-Meier plot displaying the estimated probability of acute rejection - free survival in quartiles of overall deletion mismatch sums between recipients and donors.....	16
Supplementary Figure S5. Kaplan-Meier plot displaying the estimated probability of late rejection - free survival in quartiles of overall deletion mismatch sums between recipients and donors.....	17
Supplementary Figure S6. Kaplan-Meier plot displaying the estimated probability of graft loss -free survival in quartiles of overall deletion mismatch sums between recipients and donors. ....	18
Supplementary Figure S7. Kaplan-Meier plot displaying the estimated probability of overall survival in quartiles of overall deletion mismatch sums between recipients and donors.....	19

**Supplementary Table S1. Number of deletion-tagging variant mismatches in the study cohort.**

CHR	Deletion-tagging variant	A1	A2	MAF	Number of mismatches <sup>a</sup> (%)								Affected genes <sup>b</sup>
					No rejection (n = 389)	Rejection (n = 277)	No graft loss (n = 624)	Graft loss (n = 42)	Alive (n = 503)	Deceased (n = 163)	No late rejection (n = 569)	Late rejection (n = 97)	
1	rs10927864	G	C	0.27	28 (7)	16 (6)	42 (7)	2 (5)	33 (7)	11 (7)	38 (7)	6 (6)	RPS16P1
1	rs11209948	G	T	0.35	44 (11)	31 (11)	71 (11)	4 (10)	57 (11)	18 (11)	64 (11)	11 (11)	RPL31P12
1	rs11249248	T	C	0.47	64 (16)	43 (16)	101 (16)	6 (14)	85 (17)	22 (13)	92 (16)	15 (15)	LOC100288240/R HCE/SDHDP7/TM EM50A
1	rs11587012	C	A	0.29	37 (10)	18 (6)	53 (8)	2 (5)	44 (9)	11 (7)	50 (9)	5 (5)	LCE1D/LCE1E/LO C100289267
1	rs158736	C	G	0.34	35 (9)	29 (10)	63 (10)	1 (2)	52 (10)	12 (7)	58 (10)	6 (6)	LOC100287974
1	rs6693105	T	C	0.36	45 (12)	35 (13)	77 (12)	3 (7)	64 (13)	16 (10)	68 (12)	12 (12)	LCE3B/LCE3C
1	rs7542235	G	A	0.15	11 (3)	6 (2)	16 (3)	1 (2)	11 (2)	6 (4)	16 (3)	1 (1)	CFH/CFHR1/CFHR 3/LOC100289145
2	rs7419565	C	T	0.41	45 (12)	39 (14)	79 (13)	5 (12)	70 (14)	14 (9)	73 (13)	11 (11)	TUBA3E
2	rs893403	G	A	0.32	42 (11)	26 (9)	66 (11)	2 (5)	48 (10)	20 (12)	55 (10)	13 (13)	LOC100288532 HMGXB3/PDE6A/ RPS20P4/SLC26A 2/TIGD6
5	rs10053292	C	T	0.10	6 (2)	3 (1)	8 (1)	1 (2)	5 (1)	4 (2)	8 (1)	1 (1)	BTNL3/BTNL8/LO C100128762/LOC 646227
5	rs2387715	T	A	0.31	32 (8)	25 (9)	55 (9)	1 (2)	42 (8)	15 (9)	46 (8)	11 (11)	SPINK5L2
5	rs7703761	C	T	0.45	63 (16)	36 (13)	97 (16)	2 (5)	74 (15)	25 (15)	90 (16)	9 (9)	LOC260339
6	rs17654108	T	A	0.13	7 (2)	1 (0)	8 (1)	0 (0)	5 (1)	3 (2)	7 (1)	1 (1)	TRGV1/TRGV2/TR GV3/TRGV4/TRG V5
7	rs2160195	T	A	0.33	30 (8)	30 (11)	59 (9)	1 (2)	41 (8)	19 (12)	51 (9)	9 (9)	NCAPG2
7	rs4621754	G	A	0.09	1 (0)	3 (1)	4 (1)	0 (0)	3 (1)	1 (1)	3 (1)	1 (1)	ZAN
7	rs4729606	C	T	0.26	20 (5)	17 (6)	35 (6)	2 (5)	30 (6)	7 (4)	32 (6)	5 (5)	EMID2
7	rs6943474	G	A	0.47	86 (22)	59 (21)	134 (21)	11 (26)	113 (22)	32 (20)	125 (22)	20 (21)	

8	rs11985201	A	G	0.40	44 (11)	43 (16)	78 (13)	9 (21)	70 (14)	17 (10)	73 (13)	14 (14)	ADAM3A/ADAM5 p
8	rs4543566	G	C	0.11	3 (1)	2 (1)	4 (1)	1 (2)	3 (1)	2 (1)	4 (1)	1 (1)	DEFA10P
9	rs1523688	G	T	0.24	24 (6)	5 (2)	26 (4)	3 (7)	22 (4)	7 (4)	26 (5)	3 (3)	OR13C2/OR13C5
9	rs2174926	A	G	0.44	58 (15)	43 (16)	90 (14)	11 (26)	71 (14)	30 (18)	85 (15)	16 (16)	LOC442434
10	rs10885336	A	G	0.38	43 (11)	39 (14)	78 (13)	4 (10)	60 (12)	22 (13)	68 (12)	14 (14)	GUCY2G
10	rs2342606	T	C	0.44	51 (13)	54 (19)	103 (17)	2 (5)	82 (16)	23 (14)	85 (15)	20 (20)	LOC642521/LOC6 42538
10	rs3793917	G	C	0.25	14 (4)	15 (5)	25 (4)	4 (10)	21 (4)	8 (5)	25 (4)	4 (4)	ARMS2
11	rs11228868	T	C	0.07	2 (1)	1 (0)	3 (0)	0 (0)	1 (0)	2 (1)	3 (1)	0 (0)	TRIM48
11	rs1944862	A	G	0.30	23 (6)	26 (9)	47 (8)	2 (5)	37 (7)	12 (7)	34 (6)	15 (15)	OR4P1P
11	rs4882017	A	G	0.33	88 (23)	72 (26)	151 (24)	9 (21)	119 (24)	41 (25)	139 (24)	21 (22)	OR4A45P
12	rs1478309	T	G	0.18	14 (4)	7 (3)	20 (3)	1 (2)	16 (3)	5 (3)	18 (3)	3 (3)	KLRC1/KLRC2/KL RC3
13	rs9318648	A	G	0.29	28 (7)	18 (6)	43 (7)	3 (7)	32 (6)	14 (9)	42 (7)	4 (4)	LOC374491
14	rs11156875	G	A	0.19	12 (3)	7 (3)	17 (3)	2 (5)	14 (3)	5 (3)	14 (2)	5 (5)	RPL23AP70
14	rs8007442	T	C	0.42	59 (15)	33 (12)	86 (14)	6 (14)	68 (14)	24 (15)	83 (15)	9 (9)	TRAV14DV4
14	rs8022070	T	C	0.11	2 (1)	3 (1)	5 (1)	0 (0)	4 (1)	1 (1)	5 (1)	0 (0)	LOC731308
16	rs10521145	A	G	0.09	2 (1)	0 (0)	2 (0)	0 (0)	1 (0)	1 (1)	2 (0)	0 (0)	SULT1A1
16	rs2244613	G	T	0.20	17 (4)	14 (5)	29 (5)	2 (5)	28 (6)	3 (2)	27 (5)	4 (4)	CES4
17	rs16966699	G	C	0.12	7 (2)	3 (1)	10 (2)	0 (0)	8 (2)	2 (1)	10 (2)	0 (0)	KRT33A, KRT33B
17	rs8064493	A	G	0.21	22 (6)	9 (3)	30 (5)	1 (2)	26 (5)	5 (3)	30 (5)	1 (1)	KRTAP9P1
19	rs103294	T	C	0.29	35 (9)	19 (7)	50 (8)	4 (10)	30 (8)	16 (10)	47 (8)	7 (7)	LILRA3
19	rs324121	A	G	0.13	8 (2)	7 (3)	14 (2)	1 (2)	8 (2)	7 (4)	12 (2)	3 (3)	LOC400713
19	rs3810336	A	G	0.28	31 (8)	19 (7)	50 (8)	0 (0)	38 (8)	12 (7)	46 (8)	4 (4)	GALP
19	rs4806152	C	A	0.23	22 (6)	13 (5)	34 (5)	1 (2)	29 (6)	6 (4)	31 (5)	4 (4)	FFAR3/GPR42P

A1, minor allele; A2, major allele; CHR, chromosome; MAF, minor allele frequency

<sup>a</sup>Mismatch refers to cases in which a recipient who is homozygous for a deletion-tagging allele received a transplant from a donor with a nonhomozygous or homozygous reference allele genotype.

<sup>b</sup>Steers NJ, Li Y, Drace Z, et al. Genomic Mismatch at LIMS1 Locus and Kidney Allograft Rejection. *N Engl J Med.* 2019;380(20):1918-1928. doi:10.1056/nejmoa180373

**Supplementary Table S2. Summary statistics of adjusted Cox proportional hazards models analyzing the effect of mismatches in 40 deletion-tagging variants and time to acute rejection**

Deletion-tagging variant	Adjusted Cox proportional hazards models <sup>a</sup>		FDR
	HR (95% CI)	P-value	
rs10927864	0.829(0.489–1.406)	0.486	0.881
rs11209948	0.891(0.609–1.304)	0.552	0.881
rs11249248	0.907(0.653–1.261)	0.561	0.881
rs11587012	0.744(0.459–1.208)	0.232	0.619
rs158736	1.380(0.929–2.049)	0.111	0.504
rs6693105	1.085(0.759–1.552)	0.654	0.881
rs7542235	0.598(0.264–1.352)	0.217	0.619
rs7419565	1.195(0.843–1.693)	0.317	0.669
rs893403	0.896(0.591–1.356)	0.602	0.881
rs10053292	0.916(0.289–2.906)	0.882	0.954
rs2387715	1.240(0.816–1.885)	0.313	0.669
rs7703761	0.754(0.525–1.082)	0.126	0.504
rs17654108	0.177(0.025–1.271)	0.085	0.504
rs2160195	1.214(0.829–1.778)	0.318	0.669
rs4621754	2.533(0.798–8.041)	0.115	0.504
rs4729606	1.139(0.684–1.897)	0.618	0.881
rs11985201	1.483(1.066–2.062)	0.019	0.448
rs4543566	0.878(0.215–3.580)	0.856	0.951
rs1523688	0.419(0.172–1.021)	0.056	0.448
rs2174926	0.989(0.709–1.380)	0.948	0.972
rs10885336	1.093(0.776–1.540)	0.610	0.881
rs2342606	1.373(1.011–1.865)	0.042	0.448
rs3793917	1.328(0.783–2.254)	0.292	0.669
rs11228868	1.216(0.169–8.755)	0.846	0.951
rs1944862	1.355(0.897–2.048)	0.149	0.542
rs1478309	0.611(0.287–1.302)	0.201	0.618
rs9318648	0.927(0.572–1.504)	0.760	0.950
rs11156875	1.175(0.519–2.661)	0.699	0.902
rs8007442	0.779(0.535–1.135)	0.193	0.618
rs8022070	2.505(0.787–7.975)	0.120	0.504
rs10521145	0(0–Inf)	0.991	0.991
rs2244613	1.063(0.619–1.828)	0.824	0.951
rs16966699	0.674(0.214–2.120)	0.499	0.881
rs8064493	0.513(0.260–1.012)	0.054	0.448
rs103294	0.900(0.564–1.438)	0.661	0.881
rs324121	1.105(0.516–2.367)	0.797	0.951
rs3810336	0.982(0.613–1.571)	0.938	0.972
rs4806152	0.780(0.442–1.378)	0.392	0.784
rs6943474	0.914(0.681–1.227)	0.550	0.881
rs4882017	1.313(1.000–1.722)	0.050	0.448

CI, confidence interval; FDR, false detection rate; HR, hazard ratio.

<sup>a</sup> Models were adjusted with recipient and donor age, recipient and donor sex, cold ischemia time, HLA I eplet mismatch, HLA II eplet mismatch, year of transplantation, autoimmune status and calcineurin inhibitor type initial status.

**Supplementary Table S3. Summary statistics of adjusted Cox proportional hazards models analyzing the effect of mismatches in 40 deletion-tagging variants and time to late rejection**

Deletion-tagging variant	Adjusted Cox proportional hazards models <sup>a</sup>		FDR
	HR (95% CI)	P-value	
rs10927864	1.004(0.434–2.326)	0.992	0.995
rs11209948	0.967(0.513–1.823)	0.916	0.995
rs11249248	0.903(0.516–1.582)	0.722	0.995
rs11587012	0.625(0.252–1.552)	0.311	0.982
rs158736	0.673(0.291–1.556)	0.355	0.995
rs6693105	1.003(0.544–1.847)	0.993	0.995
rs7542235	0.322(0.045–2.328)	0.262	0.953
rs7419565	0.869(0.463–1.633)	0.663	0.995
rs893403	1.504(0.831–2.721)	0.178	0.953
rs10053292	1.025(0.140–7.524)	0.980	0.995
rs2387715	1.517(0.803–2.864)	0.199	0.953
rs7703761	0.608(0.304–1.214)	0.158	0.953
rs17654108	0.807(0.110–5.925)	0.833	0.995
rs2160195	1.039(0.522–2.069)	0.913	0.995
rs4621754	1.946(0.264–14.358)	0.514	0.995
rs4729606	1.025(0.413–2.545)	0.958	0.995
rs11985201	1.196(0.676–2.114)	0.538	0.995
rs4543566	1.439(0.196–10.554)	0.720	0.995
rs1523688	0.864(0.270–2.769)	0.806	0.995
rs2174926	1.173(0.681–2.020)	0.566	0.995
rs10885336	1.205(0.681–2.130)	0.522	0.995
rs2342606	1.530(0.926–2.528)	0.097	0.953
rs3793917	0.867(0.316–2.378)	0.782	0.995
rs11228868	0(0–Inf)	0.994	0.995
rs1944862	2.341(1.326–4.130)	0.003	0.120
rs1478309	0.930(0.291–2.964)	0.902	0.995
rs9318648	0.553(0.201–1.521)	0.251	0.953
rs11156875	2.558(0.925–7.074)	0.070	0.933
rs8007442	0.654(0.327–1.308)	0.230	0.953
rs8022070	0(0–Inf)	0.994	0.995
rs10521145	0(0–Inf)	0.995	0.995
rs2244613	0.820(0.299–2.248)	0.700	0.995
rs16966699	0(0–Inf)	0.995	0.995
rs8064493	0.145(0.020–1.057)	0.057	0.933
rs103294	0.954(0.441–2.065)	0.905	0.995
rs324121	1.179(0.365–3.810)	0.784	0.995
rs3810336	0.533(0.195–1.457)	0.220	0.953
rs4806152	0.595(0.215–1.652)	0.319	0.982
rs6943474	0.891(0.538–1.476)	0.654	0.995
rs4882017	0.946(0.581–1.540)	0.823	0.995

CI, confidence interval; FDR, false detection rate; HR, hazard ratio.

<sup>a</sup> Models were adjusted with recipient and donor age, recipient and donor sex, cold ischemia time, HLA I eplet mismatch, HLA II eplet mismatch, year of transplantation, autoimmune status and calcineurin inhibitor type initial status.

**Supplementary Table S4. Summary statistics of adjusted Cox proportional hazards models analyzing the effect of mismatches in 40 deletion-tagging variants and time to graft loss**

Deletion-tagging variant	Adjusted Cox proportional hazards models <sup>a</sup>		FDR
	HR (95% CI)	P-value	
rs10927864	0.873(0.203–3.750)	0.855	0.997
rs11209948	0.839(0.294–2.390)	0.742	0.997
rs11249248	0.771(0.320–1.855)	0.561	0.997
rs11587012	0.484(0.114–2.051)	0.325	0.997
rs158736	0.313(0.042–2.316)	0.255	0.997
rs6693105	0.598(0.183–1.960)	0.396	0.997
rs7542235	0.919(0.122–6.912)	0.935	0.997
rs7419565	1.030(0.399–2.658)	0.951	0.997
rs893403	0.492(0.117–2.061)	0.332	0.997
rs10053292	3.760(0.478–29.554)	0.208	0.997
rs2387715	0.639(0.151–2.698)	0.543	0.997
rs7703761	0.298(0.071–1.249)	0.098	0.980
rs17654108	0(0–Inf)	0.996	0.997
rs2160195	0.265(0.036–1.940)	0.191	0.997
rs4621754	0(0–Inf)	0.997	0.997
rs4729606	1.110(0.262–4.705)	0.887	0.997
rs11985201	1.621(0.739–3.558)	0.228	0.997
rs4543566	3.970(0.510–30.902)	0.188	0.997
rs1523688	2.601(0.760–8.901)	0.128	0.997
rs2174926	2.332(1.145–4.752)	0.020	0.800
rs10885336	0.811(0.286–2.297)	0.693	0.997
rs2342606	0.290(0.069–1.212)	0.090	0.98
rs3793917	2.538(0.874–7.372)	0.087	0.980
rs11228868	0(0–Inf)	0.996	0.997
rs1944862	0.686(0.160–2.946)	0.613	0.997
rs1478309	0.839(0.114–6.182)	0.863	0.997
rs9318648	1.070(0.322–3.555)	0.912	0.997
rs11156875	1.299(0.174–9.703)	0.799	0.997
rs8007442	1.087(0.444–2.661)	0.854	0.997
rs8022070	0(0–Inf)	0.996	0.997
rs10521145	0(0–Inf)	0.997	0.997
rs2244613	0.985(0.235–4.130)	0.983	0.997
rs16966699	0(0–Inf)	0.996	0.997
rs8064493	0.535(0.071–4.021)	0.544	0.997
rs103294	1.359(0.478–3.865)	0.565	0.997
rs324121	0.704(0.094–5.301)	0.734	0.997
rs3810336	0(0–Inf)	0.995	0.997
rs4806152	0.469(0.063–3.491)	0.460	0.997
rs6943474	0.968(0.457–2.050)	0.932	0.997
rs4882017	1.061(0.496–2.267)	0.879	0.997

CI, confidence interval; FDR, false detection rate; HR, hazard ratio.

<sup>a</sup> Models were adjusted with recipient and donor age, recipient and donor sex, cold ischemia time, HLA I eplet mismatch, HLA II eplet mismatch, year of transplantation, autoimmune status and calcineurin inhibitor type initial status.

**Supplementary Table S5. Summary statistics of adjusted Cox proportional hazards models analyzing the effect of mismatches in 40 deletion-tagging variants and time to death.**

Deletion-tagging variant	Adjusted Cox proportional hazards models <sup>a</sup>		FDR
	HR (95% CI)	P-value	
rs10927864	0.899(0.469–1.722)	0.748	0.938
rs11209948	0.806(0.478–1.361)	0.420	0.832
rs11249248	0.764(0.475–1.230)	0.268	0.814
rs11587012	0.792(0.425–1.477)	0.464	0.844
rs158736	0.703(0.367–1.344)	0.286	0.814
rs6693105	0.759(0.444–1.299)	0.315	0.814
rs7542235	1.518(0.660–3.490)	0.326	0.814
rs7419565	0.725(0.416–1.266)	0.258	0.814
rs893403	1.232(0.756–2.007)	0.402	0.832
rs10053292	1.748(0.546–5.593)	0.346	0.814
rs2387715	1.238(0.723–2.120)	0.437	0.832
rs7703761	1.151(0.743–1.785)	0.529	0.920
rs17654108	4.271(1.303–13.999)	0.017	0.340
rs2160195	1.487(0.917–2.411)	0.108	0.814
rs4621754	1.162(0.160–8.468)	0.882	0.980
rs4729606	0.858(0.399–1.844)	0.695	0.938
rs11985201	0.741(0.440–1.247)	0.259	0.814
rs4543566	1.272(0.175–9.248)	0.812	0.955
rs1523688	1.135(0.524–2.457)	0.748	0.938
rs2174926	1.329(0.887–1.990)	0.168	0.814
rs10885336	1.294(0.820–2.042)	0.268	0.814
rs2342606	0.724(0.448–1.170)	0.187	0.814
rs3793917	1.133(0.552–2.327)	0.734	0.938
rs11228868	7.554(1.767–32.295)	0.006	0.240
rs1944862	1.010(0.542–1.883)	0.975	0.999
rs1478309	1.027(0.420–2.514)	0.953	0.999
rs9318648	1.030(0.577–1.840)	0.921	0.996
rs11156875	1.273(0.517–3.136)	0.600	0.935
rs8007442	0.966(0.613–1.523)	0.882	0.980
rs8022070	1.001(0.137–7.321)	0.999	0.999
rs10521145	5.276(0.714–38.984)	0.103	0.814
rs2244613	0.406(0.129–1.274)	0.122	0.814
rs16966699	1.413(0.345–5.798)	0.631	0.935
rs8064493	0.624(0.252–1.543)	0.307	0.814
rs103294	1.252(0.733–2.138)	0.411	0.832
rs324121	1.791(0.825–3.888)	0.141	0.814
rs3810336	1.091(0.602–1.978)	0.774	0.938
rs4806152	0.799(0.348–1.833)	0.597	0.935
rs6943474	0.940(0.632–1.398)	0.760	0.938
rs4882017	1.095(0.759–1.579)	0.629	0.935

CI, confidence interval; FDR, false detection rate; HR, hazard ratio.

<sup>a</sup> Models were adjusted with recipient and donor age, recipient and donor sex, cold ischemia time, HLA I eplet mismatch, HLA II eplet mismatch, year of transplantation, autoimmune status and calcineurin inhibitor type initial status.



**Supplementary Table S6. Adjusted Cox proportional hazards model for rs11985201 mismatch and time to acute rejection.**

<b>Covariate</b>	<b>HR (95% CI)</b>	<b>P-value</b>
rs11985201 mismatch	1.483(1.066–2.062)	0.019
Recipient age	0.982(0.973–0.992)	0.001
Donor age	0.997(0.988–1.006)	0.495
Recipient sex	1.140(0.887–1.467)	0.307
Donor sex	1.172(0.912–1.506)	0.214
Cold ischemia time minutes	0.999(0.998–1.000)	0.127
Eplets total HLA I	1.019(1.002–1.036)	0.027
Eplets total HLA II	1.018(0.995–1.042)	0.123
Year of transplantation	0.966(0.943–0.990)	0.007
Autoimmune liver disease	1.260(0.978–1.623)	0.074
Initial calcineurin inhibitor type: cyclosporine A	1.585(1.124–2.235)	0.009

Autoimmune liver disease was categorized as primary or secondary liver transplantation indication of primary sclerosing cholangitis, primary biliary cholangitis, or autoimmune hepatitis. CI; confidence interval, HR; hazard ration, HLA; human leukocyte antigen.

**Supplementary Table S7. Adjusted Cox proportional hazards model for rs2342606 mismatch and time to acute rejection.**

<b>Covariate</b>	<b>HR (95% CI)</b>	<b>P-value</b>
rs2342606 mismatch	1.373(1.011–1.865)	0.042
Recipient age	0.982(0.972–0.992)	<0.001
Donor age	0.997(0.988–1.006)	0.497
Recipient sex	1.131(1.879–1.455)	0.340
Donor sex	1.159(1.901–1.489)	0.250
Cold ischemia time minutes	0.999(0.998–1.000)	0.164
Eplets total HLA I	0.016(0.000–1.033)	0.057
Eplets total HLA II	0.021(0.997–1.045)	0.081
Year of transplantation	0.965(0.942–0.989)	0.005
Autoimmune liver disease	1.210(1.939–1.561)	0.141
Initial calcineurin inhibitor type: cyclosporine A	1.635(1.158–2.308)	0.005

Autoimmune liver disease was categorized as primary or secondary liver transplantation indication of primary sclerosing cholangitis, primary biliary cholangitis, or autoimmune hepatitis. CI; confidence interval, HR; hazard ration, HLA; human leukocyte antigen.

**Supplementary Table S8. Adjusted Cox proportional hazards model for rs1944862 mismatch and time to late rejection.**

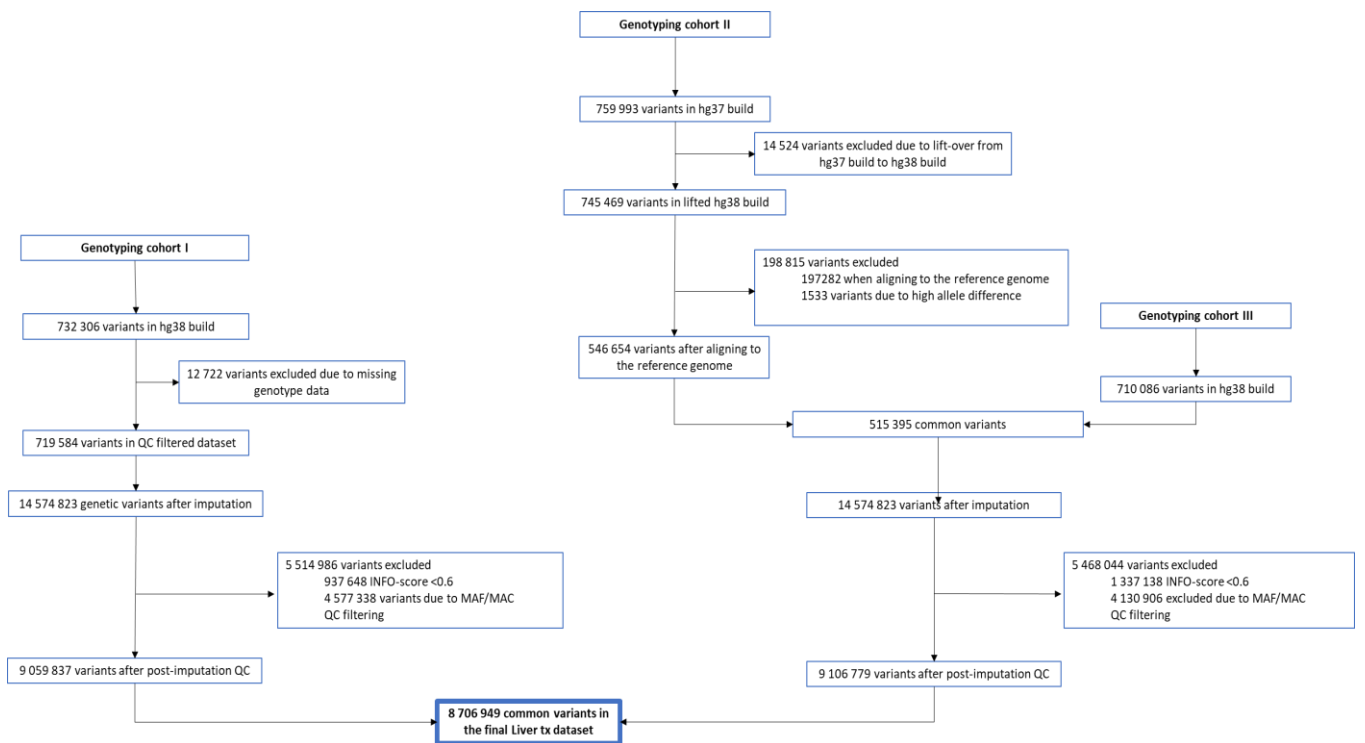
<b>Covariate</b>	<b>HR (95% CI)</b>	<b>P-value</b>
rs1944862 mismatch	2.341(1.326–4.130)	0.003
Recipient age	0.990(0.973–1.006)	0.225
Donor age	0.993(0.979–1.008)	0.371
Recipient sex	1.318(0.862–2.014)	0.202
Donor sex	1.035(0.674–1.590)	0.875
Cold ischemia time minutes	1.000(0.998–1.002)	0.767
Eplets total HLA I	1.010(0.981–1.039)	0.512
Eplets total HLA II	1.032(0.992–1.074)	0.121
Year of transplantation	0.983(0.942–1.026)	0.443
Autoimmune liver disease	1.087(0.705–1.675)	0.707
Initial calcineurin inhibitor type: cyclosporine A	2.151(1.128–4.100)	0.020

Autoimmune liver disease was categorized as primary or secondary liver transplantation indication of primary sclerosing cholangitis, primary biliary cholangitis, or autoimmune hepatitis. CI; confidence interval, HR; hazard ration, HLA; human leukocyte antigen.

**Supplementary Table S9. Adjusted Cox proportional hazards model for rs2174926 mismatch and time to graft loss.**

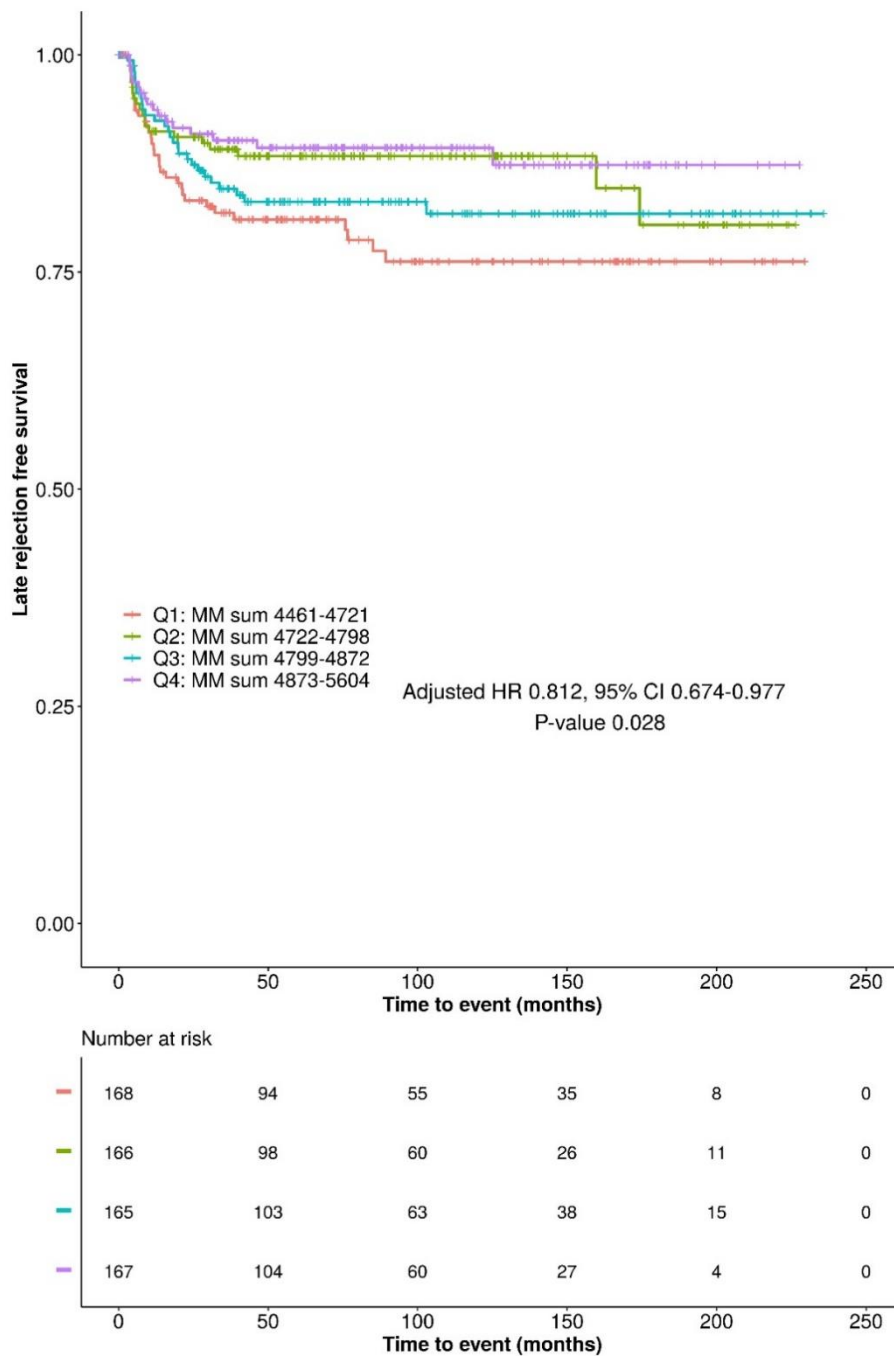
<b>Covariate</b>	<b>HR (95% CI)</b>	<b>P-value</b>
rs2174926 mismatch	2.332(1.145–4.752)	0.020
Recipient age	0.972(0.947–0.998)	0.034
Donor age	1.030(1.002–1.059)	0.037
Recipient sex	1.157(0.591–2.263)	0.671
Donor sex	1.123(0.569–2.218)	0.738
Cold ischemia time minutes	1.000(0.997–1.003)	0.971
Eplets total HLA I	0.972(0.928–1.017)	0.215
Eplets total HLA II	1.037(0.978–1.101)	0.227
Year of transplantation	0.959(0.890–1.033)	0.266
Autoimmune liver disease	1.941(1.019–3.697)	0.044
Initial calcineurin inhibitor type: cyclosporine A	5.629(1.331–23.809)	0.019

Autoimmune liver disease was categorized as primary or secondary liver transplantation indication of primary sclerosing cholangitis, primary biliary cholangitis, or autoimmune hepatitis. CI; confidence interval, HR; hazard ration, HLA; human leukocyte antigen.

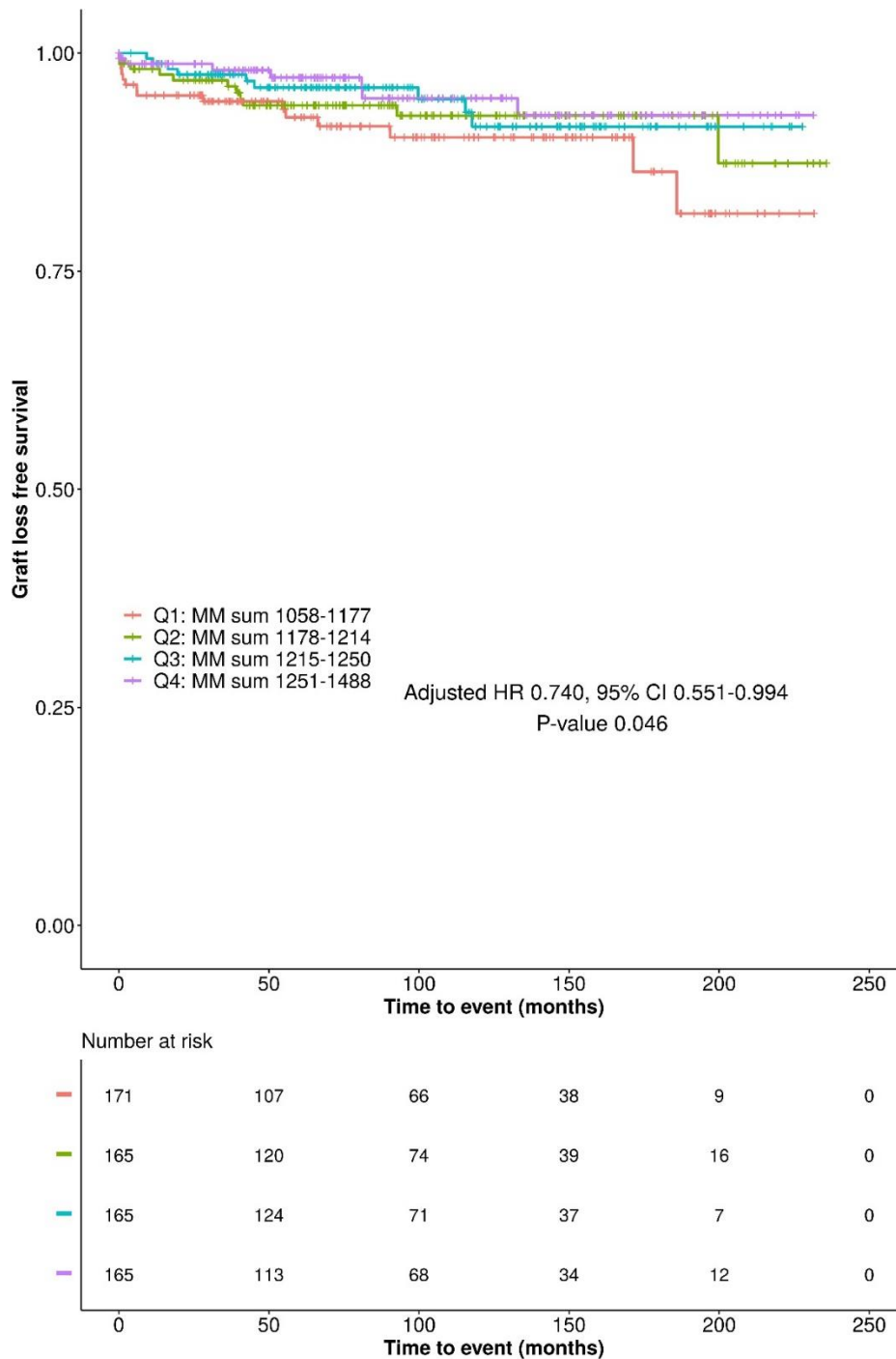


**Supplementary Figure S1. Flow of genetic variants in pre- and post-imputation processes.**

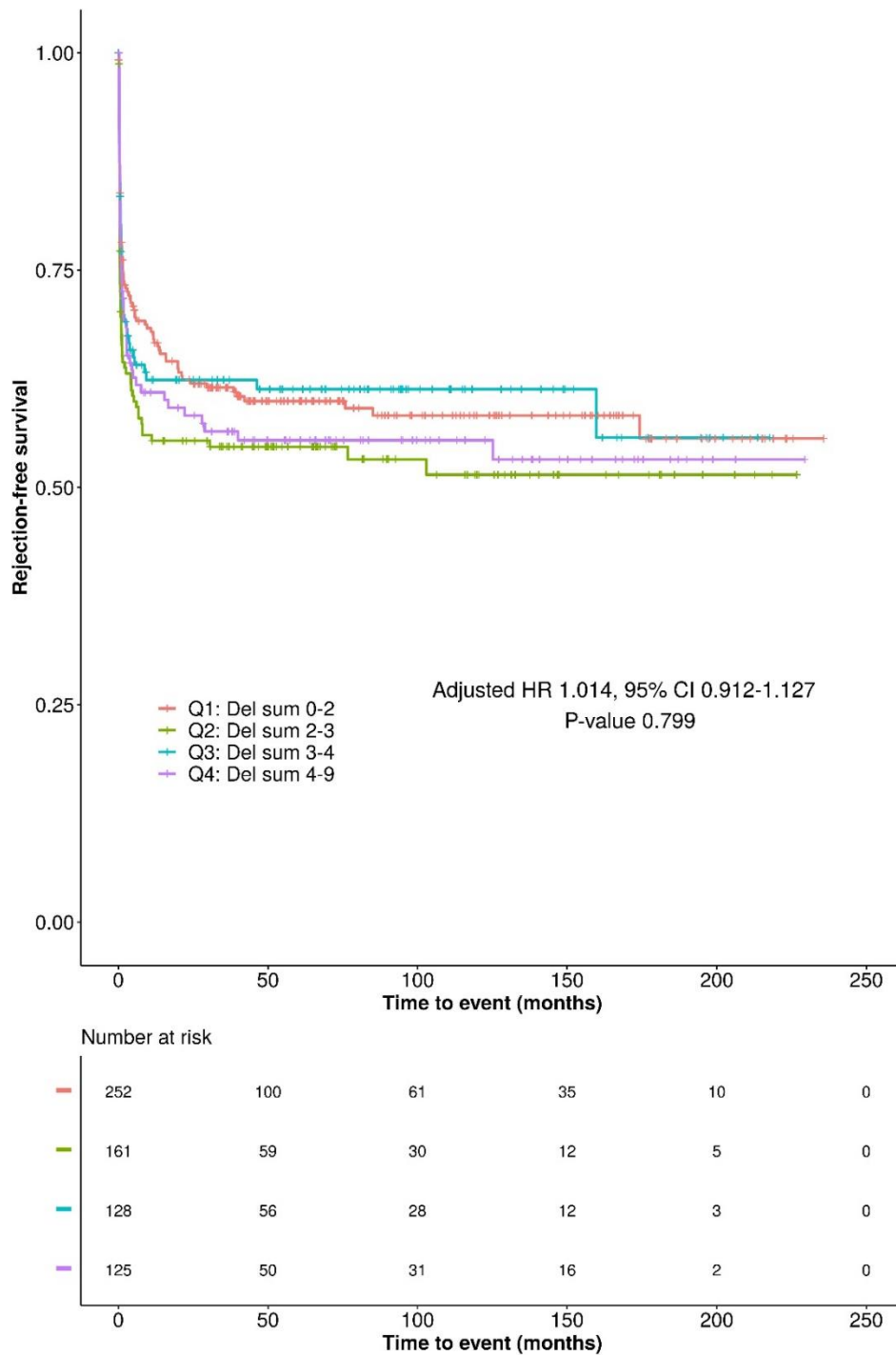
MAC, minor allele content; MAF, minor allele frequency; QC, quality control.



**Supplementary Figure S2. Kaplan-Meier plot displaying the effect of quartiles of missense variant mismatches of all proteins on late rejection-free survival.** The risk table shows the number of recipients in each quartile group that are at risk of late rejection at given time points. The x-axis shows time to event (late rejection or censoring) and the y-axis rejection-free survival. The presented hazard ratio, confidence intervals and P-value were calculate using Cox proportional hazards model with adjusted covariates: recipient and donor age, recipient and donor sex, cold ischemia time, HLA I eplet mismatch, HLA II eplet mismatch, year of transplantation, autoimmune liver disease and initial calcineurin inhibitor type. CI, confidence interval; HR, hazard ratio; MM, missense variant mismatch; Q1, quartile 1; Q2, quartile 2; Q3, quartile 3; Q4, quartile 4.

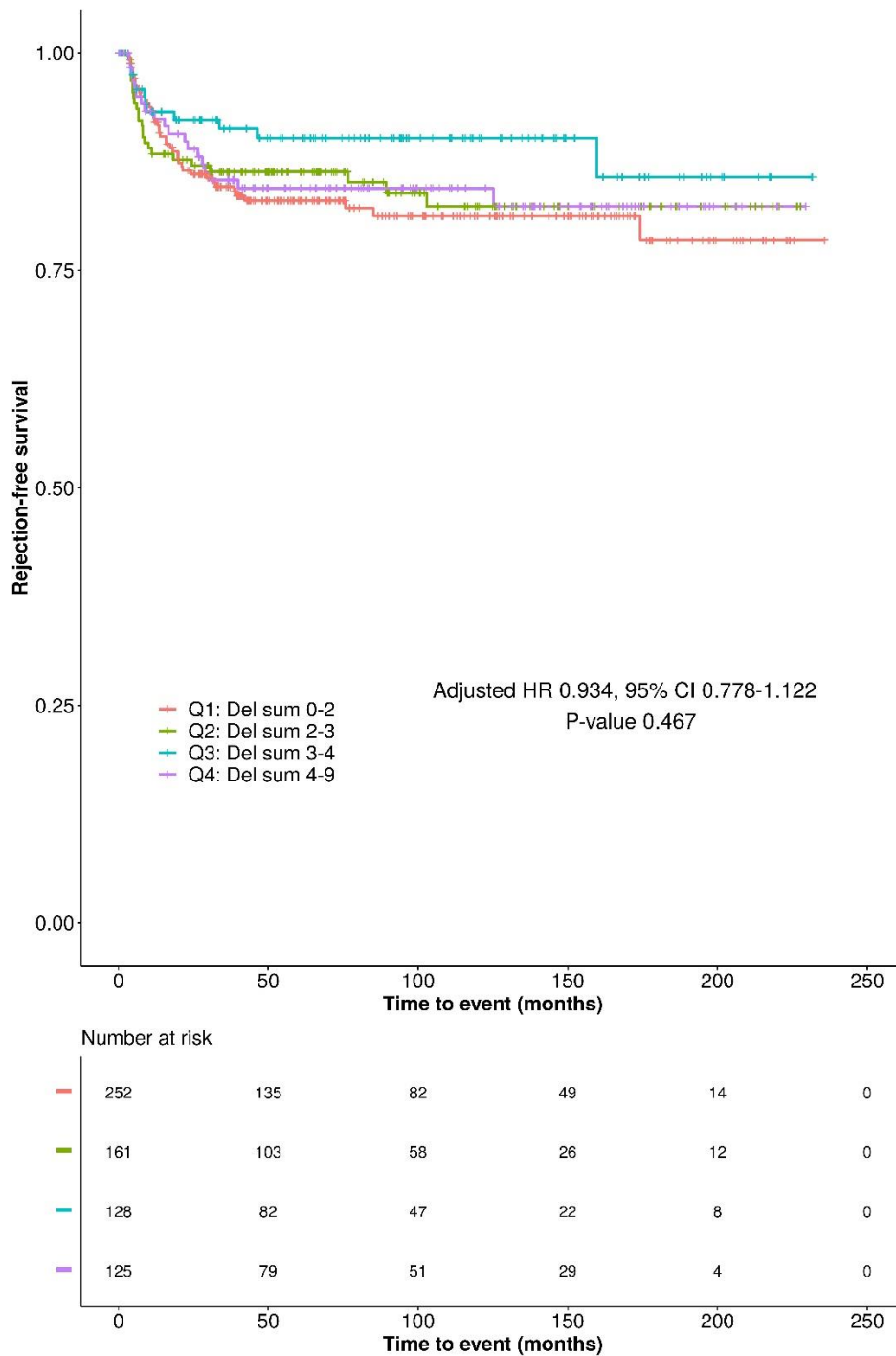


**Supplementary Figure S3. Kaplan-Meier plot displaying the effect of quartiles of missense variant mismatches of transmembrane proteins only on graft loss -free survival.** The risk table shows the number of recipients in each quartile group that are at risk of graft loss at given time points. The x-axis shows time to event (graft loss or censoring) and the y-axis rejection-free survival. The presented hazard ratio, confidence intervals and P-value were calculate using Cox proportional hazards model with adjusted covariates: recipient and donor age, recipient and donor sex, cold ischemia time, HLA I eplet mismatch, HLA II eplet mismatch, year of transplantation, autoimmune liver disease and initial calcineurin inhibitor type. CI, confidence interval; HR, hazard ratio; MM, missense variant mismatch; Q1, quartile 1; Q2, quartile 2; Q3, quartile 3; Q4, quartile 4.

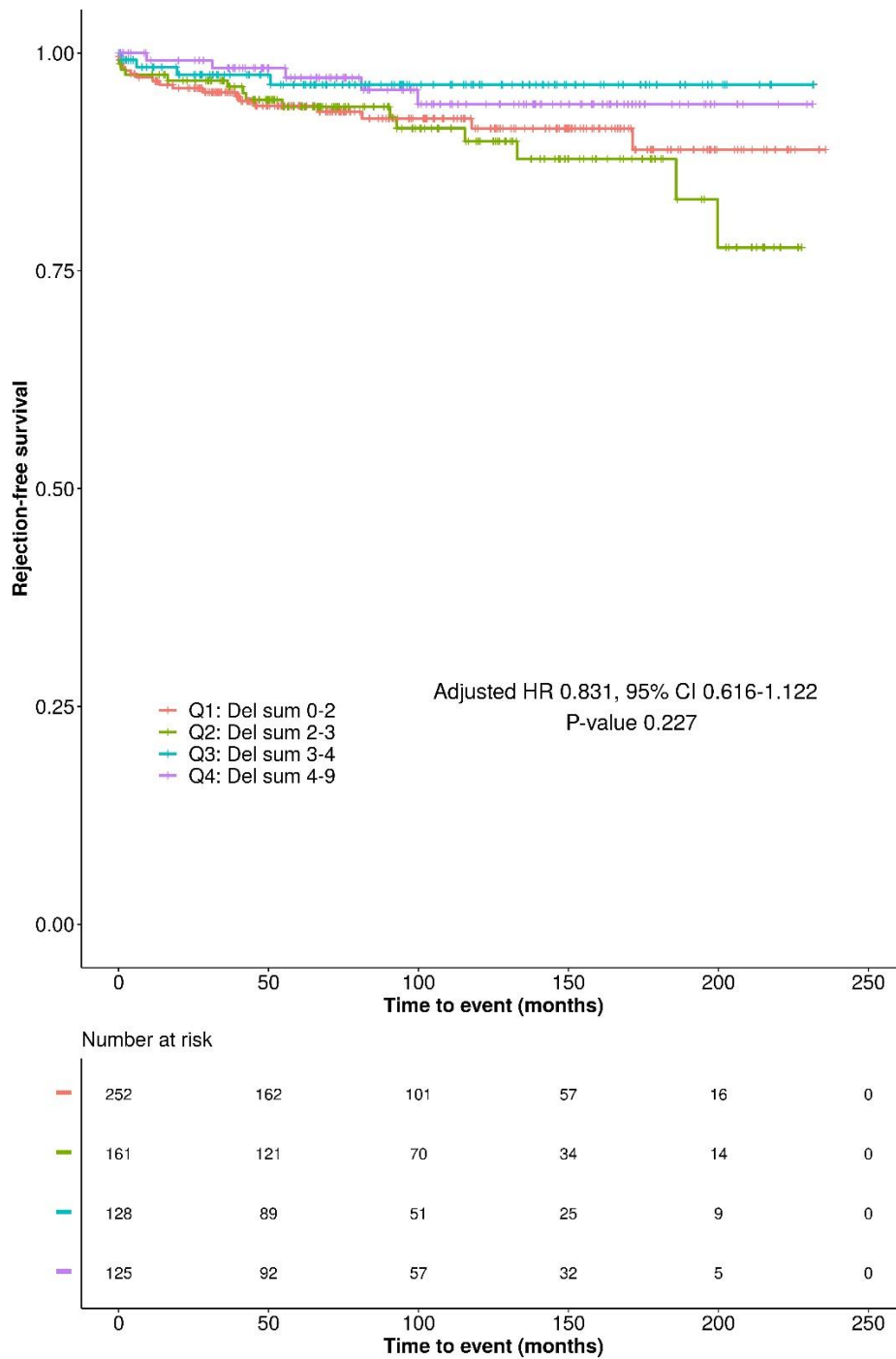


**Supplementary Figure S4. Kaplan-Meier plot displaying the estimated probability of acute rejection -free survival in quartiles of overall deletion mismatch sums between recipients and donors.** Del sum collision value indicates the number of deletion-tagging variant genotype mismatches between recipients and donors. The risk table shows the number of recipients in each quartile group that are at risk of AR at given time points. The presented hazard ratio, confidence intervals and P-value were calculate using Cox proportional hazards model with adjusted covariates: recipient and donor age, recipient and donor sex, cold ischemia time, HLA I eplet mismatch, HLA II eplet mismatch, year of transplantation, autoimmune liver disease and initial calcineurin inhibitor type. CI, confidence interval; HR, hazard ratio; Q1, quartile 1; Q2, quartile 2; Q3, quartile 3; Q4, quartile 4.

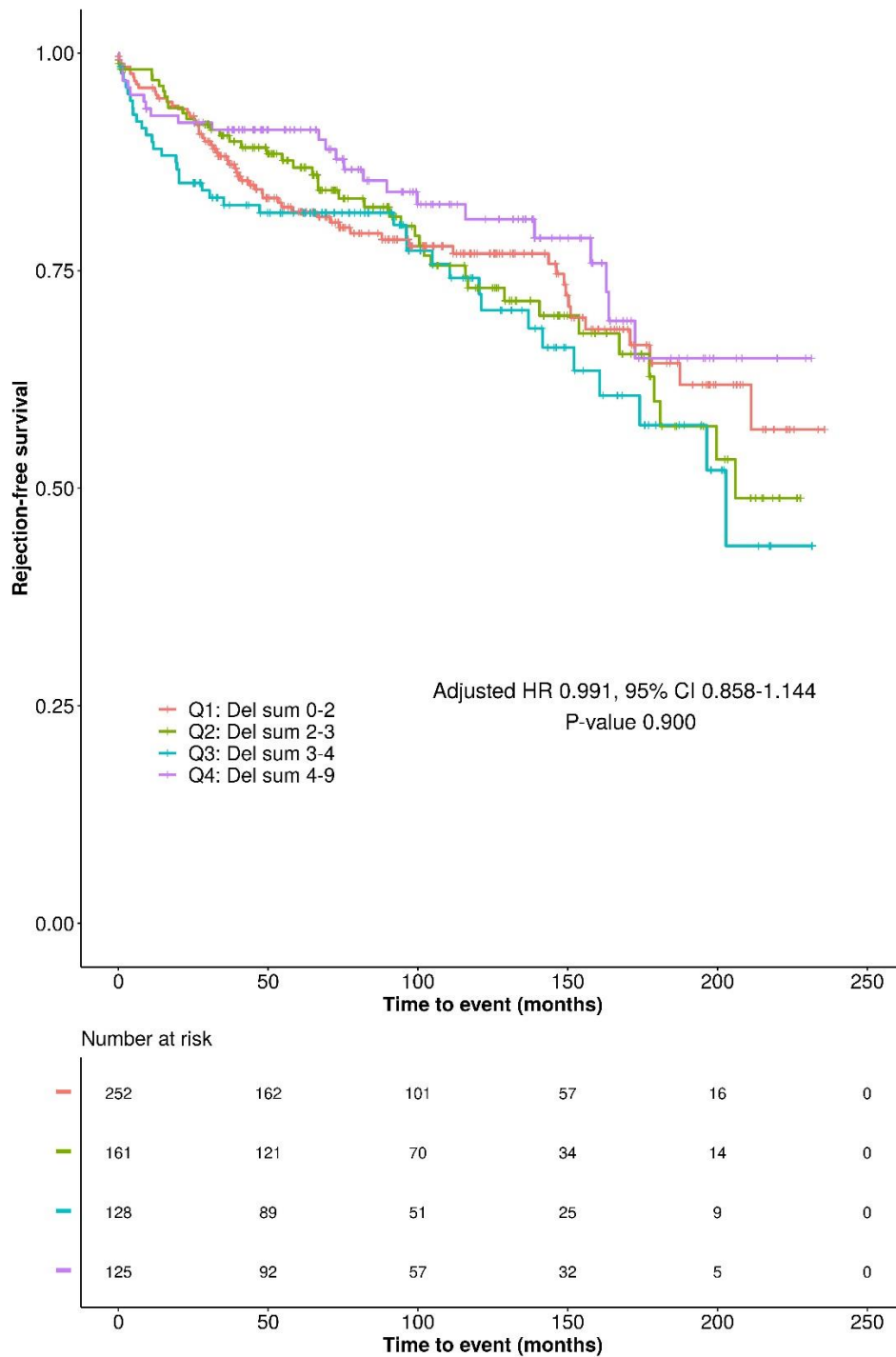




**Supplementary Figure S5. Kaplan-Meier plot displaying the estimated probability of late rejection -free survival in quartiles of overall deletion mismatch sums between recipients and donors.** Del sum collision value indicates the number of deletion-tagging variant genotype mismatches between recipients and donors. The risk table shows the number of recipients in each quartile group that are at risk of late rejection at given time points. The presented hazard ratio, confidence intervals and P-value were calculate using Cox proportional hazards model with adjusted covariates: recipient and donor age, recipient and donor sex, cold ischemia time, HLA I eplet mismatch, HLA II eplet mismatch, year of transplantation, autoimmune liver disease and initial calcineurin inhibitor type. CI, confidence interval; HR, hazard ratio; Q1, quartile 1; Q2, quartile 2; Q3, quartile 3; Q4, quartile 4.



**Supplementary Figure S6. Kaplan-Meier plot displaying the estimated probability of graft loss -free survival in quartiles of overall deletion mismatch sums between recipients and donors.** Del sum collision value indicates the number of deletion-tagging variant genotype mismatches between recipients and donors. The risk table shows the number of recipients in each quartile group that are at risk of graft loss at given time points. The presented hazard ratio, confidence intervals and P-value were calculate using Cox proportional hazards model with adjusted covariates: recipient and donor age, recipient and donor sex, cold ischemia time, HLA I eplet mismatch, HLA II eplet mismatch, year of transplantation, autoimmune liver disease and initial calcineurin inhibitor type. CI, confidence interval; HR, hazard ratio; Q1, quartile 1; Q2, quartile 2; Q3, quartile 3; Q4, quartile 4.



**Supplementary Figure S7. Kaplan-Meier plot displaying the estimated probability of overall survival in quartiles of overall deletion mismatch sums between recipients and donors.** Del sum collision value indicates the number of deletion-tagging variant genotype mismatches between recipients and donors. The risk table shows the number of recipients in each quartile group that are at risk of death at given time points. The presented hazard ratio, confidence intervals and P-value were calculate using Cox proportional hazards model with adjusted covariates: recipient and donor age, recipient and donor sex, cold ischemia time, HLA I eplet mismatch, HLA II eplet mismatch, year of transplantation, autoimmune liver disease and initial calcineurin inhibitor type. CI, confidence interval; HR, hazard ratio; Q1, quartile 1; Q2, quartile 2; Q3, quartile 3; Q4, quartile 4.