

Left atrial wall shear stress distribution correlates with atrial endocardial electrogram voltage and fibrosis in patients with atrial fibrillation

Dionysios Adamopoulos^{1,2,3}, Georgios Rovas^{4*}, Nicolas Johner¹, Hajo Müller^{1,2}, Jean-François Deux⁵, Lindsey A. Crowe⁵, Jean-Paul Vallée⁵, François Mach^{1,2}, Nikolaos Stergiopoulos⁴, Dipen Shah^{1,2}*

1: Department of Internal Medicine, Division of Cardiology, Hôpitaux Universitaires de Genève, 1205 Geneva, Switzerland.

2: Faculty of Medicine, Department of Medicine, Geneva University, 1206 Geneva, Switzerland.

3: Department of Diagnostics, Division of Nuclear Medicine, Hôpitaux Universitaires de Genève, 1205 Geneva, Switzerland

4: Laboratory of Hemodynamics and Cardiovascular Technology, Ecole Polytechnique Fédérale de Lausanne, 1015 Lausanne, Switzerland.

5: Department of Diagnostics, Division of Radiology, Hôpitaux Universitaires de Genève, 1205 Geneva, Switzerland.

** Both authors equally contributed to the study.*

Corresponding Author:

Dr. Georgios Rovas

EPFL STI IBI-STI LHTC

MED 3 2923 (Bâtiment MED) Station 9

1015 Lausanne

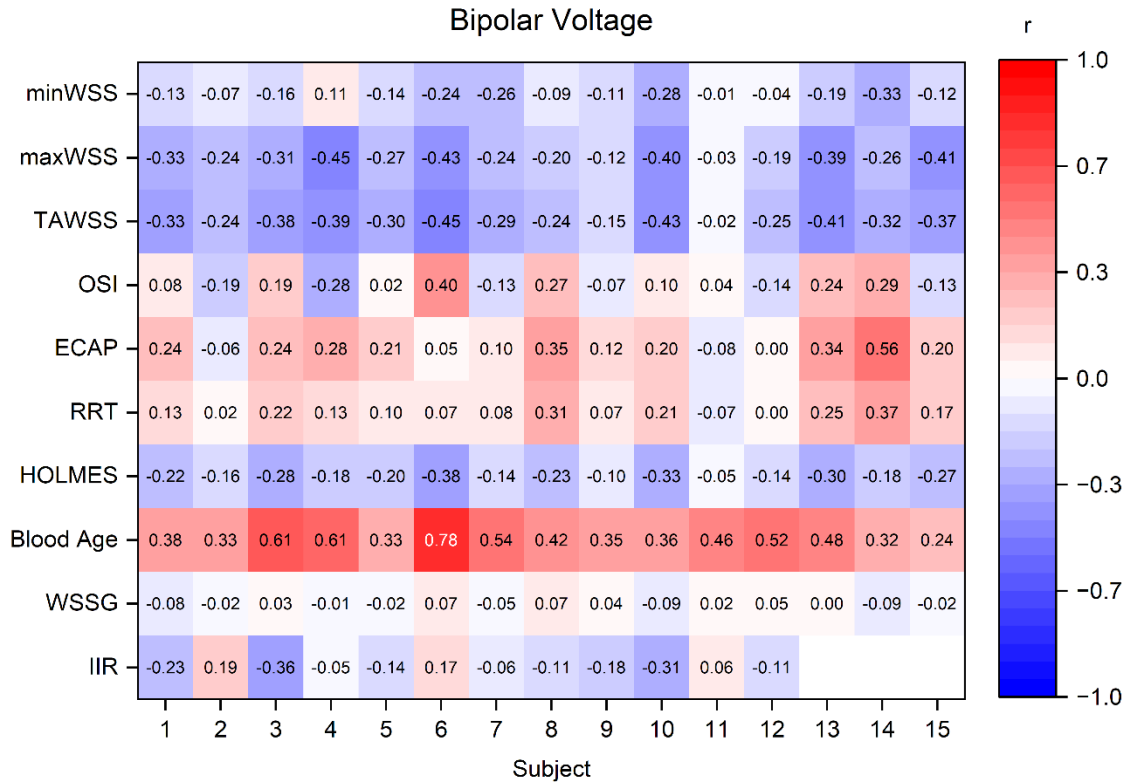
Switzerland

Tel: +41 21 693 87 66

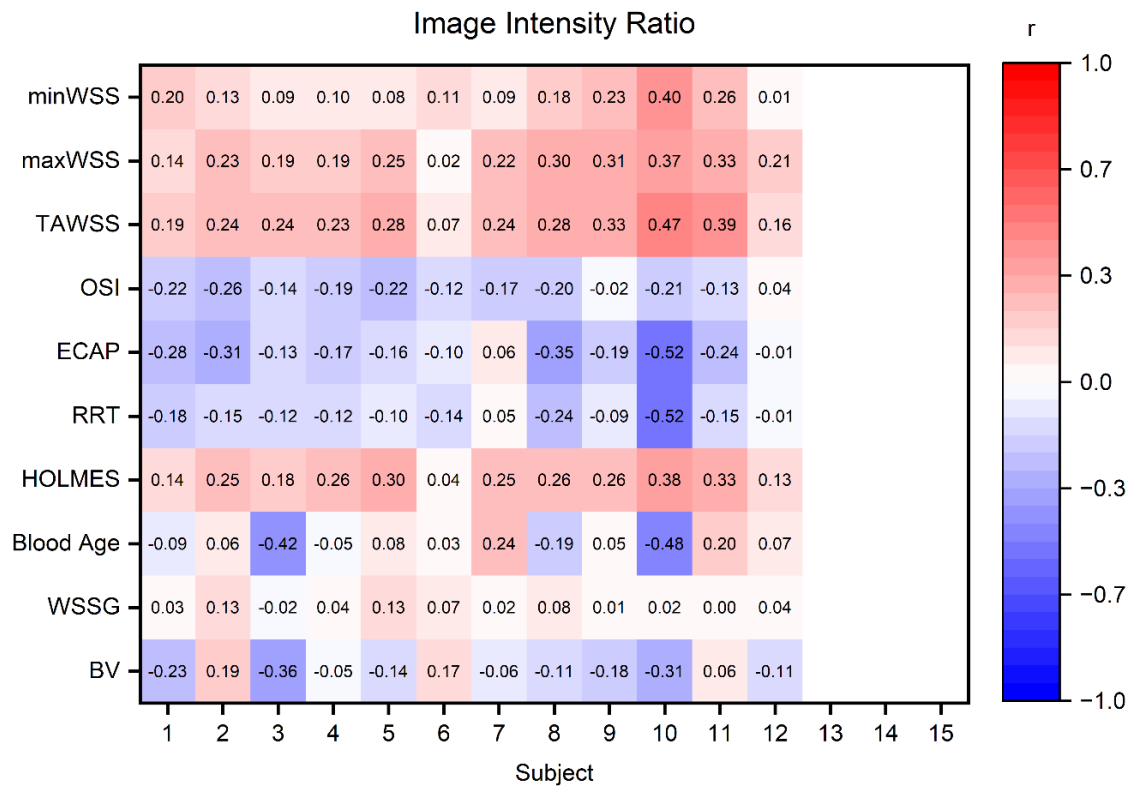
Email: georgios.rovas@epfl.ch

Supplementary Results

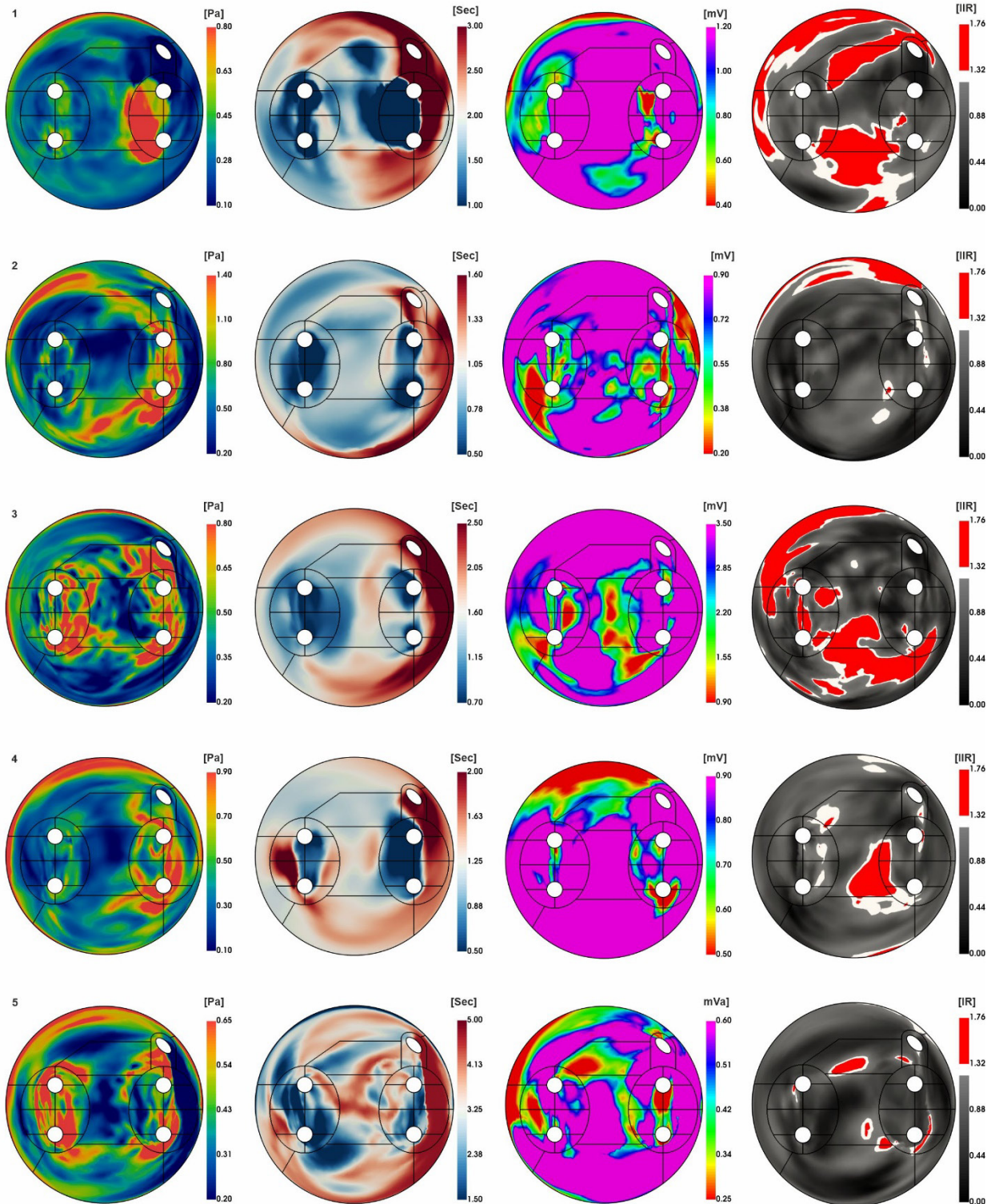
Supplementary Figure 1. Pearson's correlation coefficient heatmap between the bipolar voltage and the calculated hemodynamic indices of each subject. The 3D electro-anatomical map of subjects 2, 3, 5, 9, 10, 11 and 14 were obtained in atrial fibrillation.



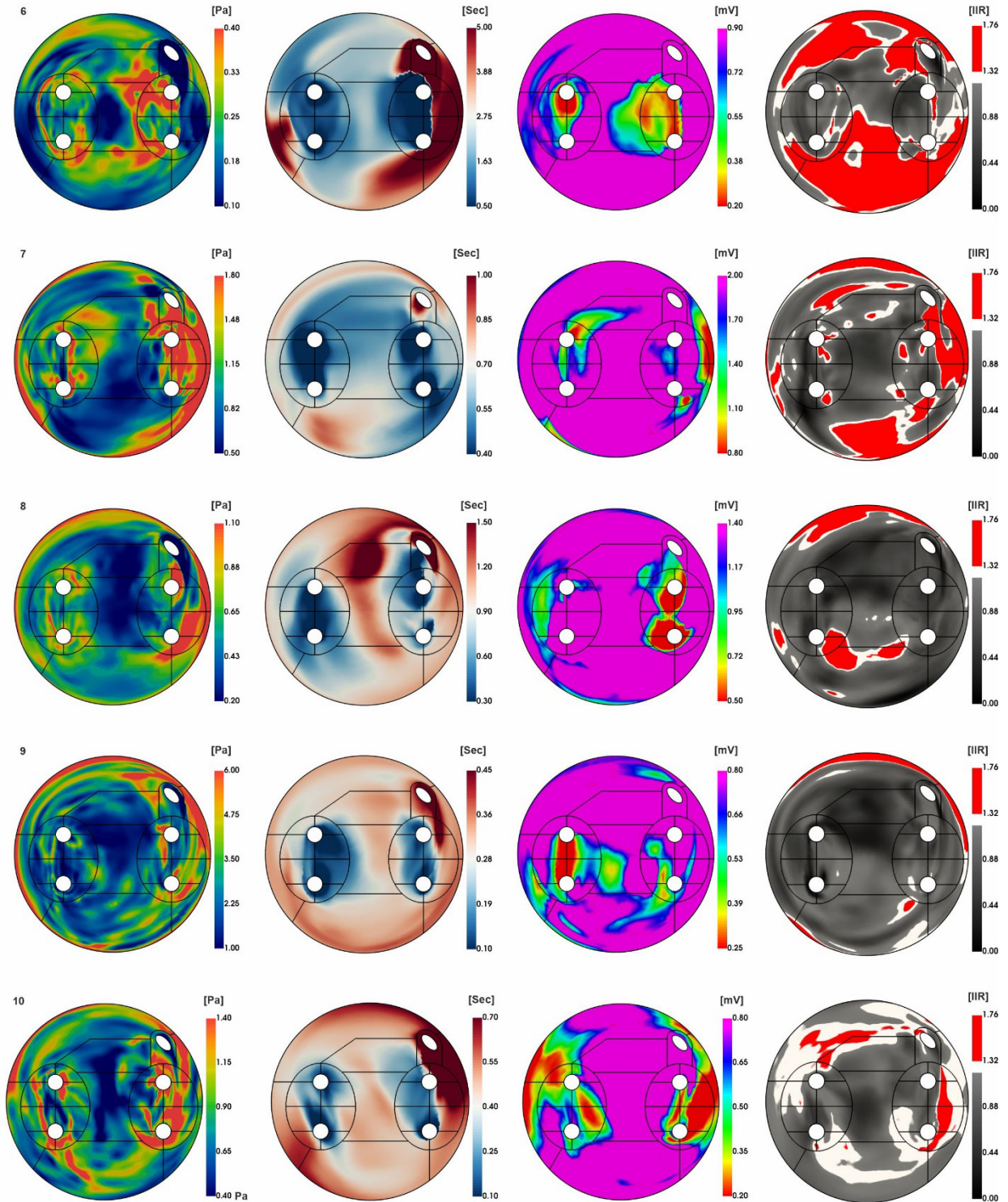
Supplementary Figure 2. Pearson's correlation coefficient heatmap between the image intensity ratio and the calculated hemodynamic indices of each subject.



Supplementary Figure 3. The 2D maps of the distribution of the time-averaged wall shear stress (TAWSS), bipolar voltage (BV), blood age (BA) and Image Intensity Ratio (IIR) for each subject. The colormap corresponds to healthy regions (black-gray), regions with interstitial fibrosis (white) and fibrotic regions (red). LGE-CMR acquisitions were not available for subjects 13–15.



Supplementary Figure 3 (continued). The 2D maps of the distribution of the time-averaged wall shear stress (TAWSS), bipolar voltage (BV), blood age (BA) and Image Intensity Ratio (IIR) for each subject. The colormap corresponds to healthy regions (black-gray), regions with interstitial fibrosis (white) and fibrotic regions (red). LGE-CMR acquisitions were not available for subjects 13–15.



Supplementary Figure 3 (continued). The 2D maps of the distribution of the time-averaged wall shear stress (TAWSS), bipolar voltage (BV), blood age (BA) and Image Intensity Ratio (IIR) for each subject. The colormap corresponds to healthy regions (black-gray), regions with interstitial fibrosis (white) and fibrotic regions (red). LGE-CMR acquisitions were not available for subjects 13–15.

