

## Association between genotypes of *ABCB1*, *ABCG2* and *CYP3A5* and the risk of atrial fibrillation

Tzu-Yu Pan<sup>a</sup>, Tzu-Yen Lin<sup>b</sup>, Wei-Chung Tsai<sup>c,d\*</sup>, Ming-Tsang Wu<sup>a,b,e\*</sup>

<sup>a</sup>Ph.D. Program in Environmental and Occupational Medicine, College of Medicine, Kaohsiung Medical University, Kaohsiung, Taiwan

<sup>b</sup>Department of Public Health, College of Health Sciences, Kaohsiung Medical University, Kaohsiung, Taiwan

<sup>c</sup>Division of Cardiology, Department of Internal Medicine, Kaohsiung Medical University Hospital, Kaohsiung, Taiwan

<sup>d</sup>Faculty of Medicine, College of Medicine, Kaohsiung Medical University, Kaohsiung, Taiwan

<sup>e</sup>Department of Family Medicine, Kaohsiung Medical University Hospital, Kaohsiung Medical University, Kaohsiung, Taiwan

**Running title:** *ABCB1*, *ABCG2*, *CYP3A5* and atrial fibrillation risk

### Corresponding authors:

Dr. Wei-Chung Tsai, MD, E-mail: [k920265@gap.kmu.edu.tw](mailto:k920265@gap.kmu.edu.tw)

Dr. Ming-Tsang Wu, MD, ScD E-mail: [e\\_encourage@yahoo.com](mailto:e_encourage@yahoo.com); [960021@cc.kmuh.org.tw](mailto:960021@cc.kmuh.org.tw)

### ORCID:

Tzu-Yu Pan, [orcid.org/0000-0003-3005-1944](https://orcid.org/0000-0003-3005-1944)

Tzu-Yen Lin, [orcid.org/0009-0009-6310-2323](https://orcid.org/0009-0009-6310-2323)

Wei-Chung Tsai, [orcid.org/0000-0002-1123-6954](https://orcid.org/0000-0002-1123-6954)

Ming-Tsang Wu, [orcid.org/0000-0001-7307-7816](https://orcid.org/0000-0001-7307-7816)

1 **Abstract**

2 **Background:**

3 Atrial fibrillation (AF) is a prevalent clinical condition worldwide, with a high global incidence that  
4 significantly impacts disease burden and mortality rates. Single nucleotide polymorphisms in  
5 *ABCB1*, *ABCG2* and *CYP3A5* are common, but the clinical outcomes are poorly understood. This  
6 study examines the association between the genetic variations of *ABCB1*, *ABCG2* and *CYP3A5* and  
7 the risk of AF in a Taiwanese population.

8  
9 **Methods:**

10 This case-control study recruited 216 AF patients from two hospitals in Taiwan between 2021 and  
11 2023. Control groups were matched by age ( $\pm$  one year), gender, and AF-related variables from the  
12 Taiwan Biobank. Logistic regression analyzed the association between three genetic variants and  
13 AF risk.

14  
15 **Results:**

16 A significant association was noted between *ABCG2* *rs2231142* and AF risk. Those with *ABCG2*  
17 *rs2231142* *G/T* and *T/T* genotypes had a 1.91-fold (95% CI = 1.04-3.53) increased risk of AF  
18 compared to those with the *G/G* genotype. This association was particularly pronounced in males in  
19 those carrying *ABCG2* *rs2231143* *T/T* genotype having a 4.47-fold (95% CI = 1.02-19.67) increased  
20 risk after adjusting for covariates. There were no overall significant associations between AF risk  
21 and the polymorphisms of *ABCB1* *rs4148738* and *rs1128503*, nor *CYP3A5* *rs776746*.

22  
23 **Conclusion:**

24 A robust risk association between the *ABCG2* *rs2231142* *T* allele and AF in Asian populations,  
25 particularly in male adults, suggests that genetic testing for this polymorphism could be integrated  
26 into risk assessment models for AF.

27  
28 **Keywords:** Single nucleotide polymorphisms, Atrial fibrillation, *ABCB1*, *ABCG2*, *CYP3A5*

29

30

31 **Nonstandard Abbreviations and Acronyms**

<b>1000Genomes</b>	1000 Genomes Project
<b>AF</b>	Atrial fibrillation
<b>ABCB1</b>	Adenosine triphosphate binding cassette subfamily B member 1
<b>ABCG2</b>	ATP-binding cassette subfamily G member 2
<b>ATPase</b>	Adenosine triphosphatase
<b>BCRP</b>	Breast cancer resistance protein
<b>CYP3A5</b>	Cytochrome P450 family 3 subfamily A member 5
<b>CYP450</b>	Cytochrome P450 proteins
<b>DOACs</b>	Direct oral anticoagulants
<b>GBD 2017</b>	Global Burden of Disease Study 2017
<b>gnomAD</b>	Genome Aggregation Database
<b>GWAS</b>	Genome-Wide Association Studies
<b>HbA1C</b>	Glycated hemoglobin
<b>IRB</b>	Institutional Review Board
<b>KMUH</b>	Kaohsiung Medical University Hospital
<b>KMTTH</b>	Kaohsiung Municipal Ta-Tung Hospital
<b>LDL</b>	Low-density lipoprotein cholesterol
<b>MYOZ1</b>	Myozenin 1
<b>P-gp</b>	P-glycoprotein
<b>PITX2</b>	Paired like homeodomain 2
<b>SNPs</b>	Single Nucleotide Polymorphisms
<b>TG</b>	Triglyceride
<b>TWB</b>	Taiwan Biobank
<b>ZFH3</b>	Zinc finger homeobox 3

32

33

34

## 35 Introduction

36 Atrial fibrillation (AF) is recognized globally as a prevalent clinical condition that elevates the  
37 risk of systemic thromboembolism, heart failure, stroke, dementia and mortality, significantly  
38 impacting disease burden and mortality rates worldwide.<sup>1,2</sup> Current estimates indicate that  
39 approximately 33 million people are affected by AF globally, demonstrating its extensive reach and  
40 the urgency for comprehensive understanding and effective management strategies.<sup>3</sup> The  
41 prevalence of AF differs markedly between genders, with rates of 1.4% in males and 0.7% in  
42 females. Additionally, incidence rates are reported at 1.68 per 1000 males and 0.76 per 1000  
43 females, highlighting a substantial gender disparity in AF occurrence.<sup>1,2</sup> Age also plays a crucial  
44 role, with the Global Burden of Disease Study 2017 (GBD 2017) revealing that AF prevalence  
45 increases with age—from 0.07% among those aged 30 to 34, to 8.18% for those aged 95 and above.  
46<sup>4</sup>

47 Reports have also suggested potential disparities in the incidence and characteristics of AF  
48 across different racial and ethnic groups.<sup>5-7</sup> In Taiwan, heart disease, primarily driven by AF, ranks  
49 as the leading cause of death in individuals aged 65 and above and the second leading cause of  
50 death overall, following cancer, according to the 2021 national mortality statistics from the Ministry  
51 of Health and Welfare.<sup>2</sup> Extensive research has been directed towards unraveling the mechanisms  
52 underlying AF. Predominantly, AF is seen as a consequence of diseases such as hypertension,  
53 ischemic and structural heart disease, which contribute to the electrical and structural remodeling of  
54 the atria.<sup>8-10</sup> Despite the known risk factors such as advancing age, heart disease, elevated blood  
55 pressure and excessive alcohol consumption, a significant number of cases occur without  
56 identifiable risk factors, hinting at a potential genetic predisposition to AF. This gap in  
57 understanding limits the development of effective treatments and highlights the necessity for further  
58 investigation, particularly in the realm of precision medicine.<sup>2,11</sup>

59 Over 60% of AF variability is attributed to genetic factors heightening AF susceptibility,  
60 influencing AF development and maintenance.<sup>12-14</sup> Genetic variations in the genes *ABCB1*  
61 (*adenosine triphosphate (ATP) binding cassette subfamily B member 1*), *ABCG2* (*ATP-binding*

62 *cassette subfamily G member 2*), and *CYP3A5* (*cytochrome P450 family 3 subfamily A member 5*),  
63 responsible for encoding P-glycoprotein (P-gp), breast cancer resistance protein (BCRP) and  
64 cytochrome P450 proteins (CYP450) respectively, play a significant role in altering transporter  
65 function. These genetic variations impact crucial aspects of AF, including cardiac electrical  
66 conduction, ion channel function and structural remodeling.<sup>15,16</sup> Studies have found specific single  
67 nucleotide polymorphisms (SNPs) such as rs1128503 and rs4148738 in *ABCB1*, which modify P-gp  
68 expression; furthermore, *ABCG2 rs2231142 G>T* genotype has been linked to decreased BCRP  
69 protein expression,<sup>17,18</sup> while *CYP3A5* is crucial in metabolizing anticoagulants and  
70 stroke-prevention drugs, and this process significantly impacts the achievement of appropriate  
71 anticoagulation levels in patients with AF.<sup>19</sup>

72 Understanding the relationship between these genetic variants and the risk of developing AF is  
73 essential as it can provide insight into underlying molecular mechanisms and potentially guide the  
74 development of targeted therapies in the era of precision medicine.<sup>20</sup> In recent years, precision  
75 medicine has garnered increasing attention, emphasizing the significant relationship between  
76 diseases and genes.<sup>21</sup> Each individual possesses a unique genome that can influence their disease  
77 susceptibility, treatment response and drug metabolism,<sup>22</sup> and through genetic testing and analysis,  
78 researchers can establish correlations between genetic variants and particular diseases.<sup>23</sup> This  
79 knowledge can predict an individual's disease risk, facilitate accurate disease diagnosis, and aid in  
80 selecting the most suitable treatment options;<sup>24</sup> however, the current understanding of the  
81 relationship between these gene variants and the risk of AF remains unclear. In this study, we aimed  
82 to investigate the association between genetic variants of *ABCB1* (*rs1128503*, *rs4148738*), *ABCG2*  
83 (*rs2231142*) and *CYP3A5* (*rs776746*), and the risk of AF.

84

## 85 **Materials and methods**

### 86 **Study subjects**

87 This is an ongoing case-control study. The case patients diagnosed as AF by board-certified  
88 cardiologists were recruited from Kaohsiung Medical University Hospital (KMUH) and Kaohsiung

89 Municipal Ta-Tung Hospital (KMTTH) between January 2021 and January 2023. The study  
90 subjects included individuals aged 20-85 years and willing to cooperate with blood-draw procedures.  
91 Patients undergoing cancer treatment, those with impaired renal function (eGFR<15 ml/min/1.73  
92 m<sup>2</sup>) and those who could not cooperate were excluded from the study. After the written informed  
93 consent was received, a designated researcher administered a standardized and structured  
94 questionnaire and reviewed the medical charts to collect age, gender, history of hypertension and  
95 diabetes and blood test data such as glycated hemoglobin (HbA1C), serum creatinine, triglyceride  
96 (TG) and low-density lipoprotein cholesterol (LDL)). A total of 216 AF patients were enrolled in the  
97 study period.

98 Potential healthy controls were selected from the Taiwan Biobank (TWB) cohort, a  
99 community-based cohort comprising healthy adults recruited from all over Taiwan. The TWB  
100 cohort, established in 2005, aimed to collect genetic and medical information from 200,000 ethnic  
101 Taiwanese individuals aged 20 years or above without a history of cancer, where this cohort  
102 underwent comprehensive data collection including questionnaires, physical examinations and  
103 biochemical tests on blood and urine samples, and has continued to collect biological samples  
104 to-date, including DNA, blood plasma and urine from study subjects, which can be provided to  
105 researchers in Taiwan for study purposes at a minimal cost. As of 2020, the TWB cohort had  
106 enrolled 122,068 potential study adults aged 30-75 years with baseline data. The Institutional  
107 Review Board (IRB) of KMH approved this study.

108 Among the 216 AF patients, 185 subjects have provided blood samples for genotyping results.  
109 In addition, in order to match the AF patients of similar age with healthy controls from TWB cohort,  
110 we further excluded 44 patients aged over 76 years and left 141 eligible cases in the study (**Figure**  
111 **1**). Then, the case patients were matched with the controls (1: 1 ratio) based on age within a range  
112 of  $\pm 1$  year and the same gender from TWB cohort with specific genotypes of *ABCB1* (*rs1128503*,  
113 *rs4148738*), *ABCG2* (*rs2231142*), and *CYP3A5* (*rs776746*) (n = 108,829). The final study subjects  
114 were 141 AF cases and 141 healthy controls.

115

116 **Genotyping of ABCB1 (rs1128503, rs4148738), ABCG2 (rs2231142) and CYP3A5 (rs776746)**  
117 **polymorphisms from the case study group**

118 The QIAamp DNA Mini Kit (Qiagen, Germany) was used to extract genomic DNA from  
119 peripheral blood samples collected from patients in the case study group, following the  
120 manufacturer's instructions, while TaqMan probes designed explicitly for standardized SNPs assays  
121 (Thermo Fisher Scientific, Inc) were employed to assess single nucleotide polymorphic variations  
122 in the *ABCB1* (rs1128503, rs4148738), *ABCG2* (rs2231142) and *CYP3A5* (rs776746) genes. Probe  
123 IDs and SNPs regions are listed in **Table S1**.

124 For SNPs genotyping, a reaction mixture containing 10 µL was prepared, containing 10 ng of  
125 genomic DNA, 2X TaqMan® Master Mix, 20X Assay Working Stock probe and nuclease-free water.  
126 A negative control (no template) was included in the experiment. The cycling conditions adhered to  
127 the manufacturer's standard protocol as recommended where real-time PCR was conducted on all  
128 samples using the QuantStudio 3 instrument (Applied Biosystems) and QuantStudio™ Design &  
129 Analysis Software was employed to analyze the data and identify homozygous and heterozygous  
130 alleles. To ensure the reliability of the genotyping assays, approximately 9.4% of patients (n =  
131 15/141) were randomly selected for the genotyping of each polymorphism; this additional step  
132 being performed to validate the consistency and accuracy of the genotyping results. The reaction of  
133 PCR for direct sequencing is shown in **Supplemental Material and Table S2** that was also  
134 performed to confirm the genotyping results (**Figure S1**). For TWB cohorts, we extracted the  
135 genotype information of *ABCB1* (rs1128503, rs4148738), *ABCG2* (rs2231142), and *CYP3A5*  
136 (rs776746) genes from Genome-Wide Genotyping: Affymetrix Axiom TWB and TWB 2.0 database,  
137 in which genotype analysis was either from the Axiom Genome-Wide TWB array or Axiom  
138 Genome-Wide TWB 2.0 array.<sup>25</sup>

139

140 **Statistical analysis**

141 The frequencies of *ABCB1* (rs1128503), *ABCG2* (rs2231142) and *CYP3A5* (rs776746)  
142 genotypes were assessed for Hardy-Weinberg disequilibrium in the TWB-1 control group (n = 141).

143 A comparison of demographic characteristics and genotypes between the case group (n = 141) and  
144 the TWB-1 control group (n = 141) was performed. Logistic regression models were employed to  
145 investigate the impact of *ABCB1* (*rs1128503*, *rs4148738*), *ABCG2* (*rs2231142*), and *CYP3A5*  
146 (*rs776746*) genotypes on AF risk, both before and after adjusting for covariates, including age  
147 (continuous variables), gender, diabetes, hypertension, HbA1C, serum creatinine, TG and LDL.  
148 Odds ratios (OR), confidence intervals (CI) and p-values were calculated and presented. If both  
149 *ABCB1* (*rs1128503*, *rs4148738*), *ABCG2* (*rs2231142*) and *CYP3A5* (*rs776746*) genotypes showed  
150 significant differences between case patients and controls, the combined effect of both genes was  
151 further examined. These analyses were also stratified by gender. All statistical analyses were  
152 conducted using IBM SPSS Statistics 25 software.

153

## 154 **Results**

### 155 **Characteristics of the Study Population**

156 The demographic characteristics of 141 AF patients and the 141 TWB-1 controls are shown in  
157 **Table 1**. Among these 141 AF patients, 48 (34.0%) were female and 93 (66.0%) were male, while  
158 the percentages of gender, age group (40-60 and > 60 years) and educational levels were identical in  
159 AF patients and TWB-1 controls. Additionally, between the two groups of AF patients and TWB-1  
160 controls, the aforementioned variables (gender, age groups and other variables including diabetes,  
161 hypertension, HbA1c, serum creatinine, TG and LDL) were not significantly different (all  $p > 0.05$ ).  
162 Of the 141 AF patients, 24.8% had diabetes and 35.5% had hypertension; additionally, the HbA1c  
163 level (6.2%) was higher than the normal range of 4.0-5.6%.

164

### 165 **Allele frequencies in TWB cohort**

166 The prevalence of *ABCB1* *rs1128503* A/A, A/G, and G/G was 41.8%, 46.8% and 11.3%  
167 respectively, for TWB-1 (n = 141). For *ABCB1* *rs4148738* T/T, C/T, and C/C, the prevalence was  
168 34.0%, 41.8% and 24.1% respectively, for TWB-1. *ABCG2* *rs2231142* G/G, G/T, and T/T were  
169 59.6%, 33.3% and 7.1% respectively, in TWB-1. *CYP3A5* *rs776746* C/C, T/C, and T/T were 46.1%,



170 44.0% and 9.9% respectively, in TWB-1 (**Table S3**). All frequencies of *ABCB1* (*rs1128503*,  
171 *rs4148738*), *ABCG2* (*rs2231142*), and *CYP3A5* (*rs776746*) genotypes in TWB-1 were consistent  
172 with the statistics of the Hardy-Weinberg equilibrium, which were insignificant ( $p > 0.05$ ) (**Table**  
173 **S3**).

174

### 175 **Association of ABCB1, ABCG2 and CYP3A5 polymorphisms**

176 **Table 2** shows the association of *ABCB1* (*rs1128503*, *rs4148738*), *ABCG2* (*rs2231142*), and  
177 *CYP3A5* (*rs776746*) genotypes with AF risk before and after adjusting for other covariates  
178 (including diabetes, hypertension, HbA1c, serum creatinine, TG and LDL). Genotypes of *ABCG2*  
179 *rs2231142* *G/T* and *T/T* exhibited a significant risk of developing AF compared to *G/G* genotypes  
180 after adjusting for other covariates (AOR = 1.912, 95% CI = 1.035-3.53), although no significant  
181 difference was observed in the other three SNPs after adjustment.

182 Categorized by sex, the significant effect of *ABCG2* *rs2231143* remained present in males but  
183 not females, likely due to the small sample size of female AF patients ( $n = 48$ ) (**Table 3**). Males  
184 with the combined genotypes of *ABCG2* *rs2231143* *G/T* and *T/T* had a significant risk of AF when  
185 compared with males carrying *ABCG2* *rs2231143* *G/G* genotype (crude OR=2.005, 95%  
186 CI=1.118-3.596; AOR=2.179, 95% CI=0.894-5.307). There was also a trend toward statistical  
187 significance for the association between male subjects and AF ( $p = 0.021$  and  $0.041$  before and after  
188 adjusting for other covariates), suggesting a potential risk factor associated with this haplotype in  
189 males.

190

### 191 **Discussion**

192 This hospital-based case-control study underscores the importance of the *ABCG2* *rs2231142* *G/T*  
193 and *T/T* genotypes, which exhibit a higher risk of developing AF than those with the *G/G* genotype,  
194 particularly among male patients. However, no associations were identified between the  
195 polymorphisms of *ABCB1* *rs4148738* and *rs1128503*, and *CYP3A5* *rs776746* genotypes and AF  
196 risk.

197 *ABCG2* belongs to a superfamily of 48 human ATP-binding cassette transporters, which  
198 typically facilitate the transport of various substrates and rely on ATP-binding for activation. The  
199 *ABCG2 rs2231142* variant results in a substitution of glutamine with lysine (Q141K) in exon 5.  
200 Previous studies have reported that individuals carrying the *ABCG2 rs2231142* variant (*G/T* and *T/T*)  
201 exhibit significantly lower levels of *ABCG2* protein within red blood cells as well as reduced  
202 *ABCG2* adenosine triphosphatase (ATPase) activity compared to those with the *G/G* genotype.

203 The presence of the *ABCG2 rs2231142 T* allele leads to an approximately 50% reduction in  
204 *ABCG2* protein expression.<sup>26</sup> Zhang et al. found that variations in the *ABCG2 rs2231142* variant  
205 could impact the serum levels of pro-inflammatory and pro-angiogenic markers in chronic  
206 inflammatory arterial conditions, hinting at a correlation between inflammation and the *ABCG2*  
207 *rs2231142* variant.<sup>27</sup> These findings suggest that *ABCG2 rs2231142* could play a crucial  
208 physiological role as an excretor of environmental and endogenous toxins, and it might influence  
209 the multidrug transporter function in human erythrocytes, corresponding to pharmacologically  
210 relevant genetic variations.<sup>28</sup> Furthermore, recent studies have emphasized that the  
211 pharmacogenetic implications of these findings could connote the efficacy of direct oral  
212 anticoagulants (DOACs) being enhanced, as genetic variants influence drug metabolism and  
213 response.<sup>29,30</sup>

214 In recent years, DOACs such as apixaban, dabigatran, edoxaban and rivaroxaban have  
215 replaced vitamin K antagonists for treating AF due to their ease of use and better effectiveness. In a  
216 rat model of pharmacokinetic interaction, almonertinib significantly increased systemic exposure to  
217 apixaban and rivaroxaban by inhibiting *ABCB1* and *ABCG2*.<sup>31</sup> Previous studies have shown  
218 variable results regarding the relationship between genotypes and DOACs in AF patients. Gulilat et  
219 al. reported that the *ABCG2 rs2231142 T* allele predicted higher concentrations of apixaban in  
220 Caucasian AF patients,<sup>32</sup> but was associated with a lower concentration and lower oral clearance of  
221 apixaban in Japanese AF patients.<sup>33,34</sup> Additionally, no correlations were observed between the  
222 *ABCG2 rs2231142* and rivaroxaban concentrations in Japanese AF patients.<sup>35</sup> Nevertheless, we  
223 observed a significant increase in the risk of AF associated with the *ABCG2 rs2231142 T* allele in

224 patients treated with rivaroxaban (**Table S4**), indicating that this SNPs might affect the drug  
225 transporters and metabolism of DOACs, making additional studies necessary to clarify the role of  
226 this SNPs in DOACs pharmacokinetic interactions.

227 Previous studies have shown that the loss-of-function *ABCG2 rs2231142 T* allele is associated  
228 with hyperuricemia, which might contribute to vascular damage and cardiovascular diseases such as  
229 atrial fibrillation, coronary artery disease, heart failure and stroke.<sup>36-38</sup> Similar observations were  
230 noted in an earlier prospective cohort study conducted in Taiwan, where hyperuricemia emerged as  
231 an independent risk factor for mortality from all causes, total cardiovascular disease and ischemic  
232 stroke.<sup>39</sup> In other studies, it is also suggested that the effect size of the *ABCG2 rs2231142* is more  
233 significant in males.<sup>36,40,41</sup> Our current data showed a similar interaction, as we found a significant  
234 association between the *rs2231142 T* allele and AF risk in males, which was consistent with these  
235 Asian population studies,<sup>36-41</sup> and although previous studies have demonstrated that estrogen levels  
236 could affect *ABCG2* expression,<sup>42,43</sup> this might explain why we observed the association with atrial  
237 fibrillation risk predominantly in males rather than females.

238 Currently, no studies have examined the AF risk linked to the *ABCG2 rs2231142* genotype, but  
239 research on other SNPs regarding AF risk has been conducted. Genetic factors contributing to AF  
240 are gaining more attention, with estimates of heritability reaching 22% in the UK Biobank and 62%  
241 in a twin study conducted in Denmark.<sup>14,44</sup> Daniel et al. were the first to report the Genome-wide  
242 association studies (GWAS) for AF, where the upstream region of the transcription factor gene  
243 *PITX2* on 4q25 was significantly associated with AF.<sup>45</sup> Several other genetic loci related to AF  
244 have been identified, including variants in or near *ZFHX3* (*Zinc Finger Homeobox 3*), *PITX2*  
245 (*paired like homeodomain 2*), and *MYOZ1* (*myozenin 1*), which show the most associations.<sup>46</sup>

246 Our research further highlights the significant relationship between the *ABCG2 rs2231142 T*  
247 allele and increased AF risk, particularly in males. This suggests that integrating genetic testing for  
248 this polymorphism into risk assessment models for AF could enhance precision in AF management  
249 strategies, especially in populations with a high prevalence of this risk allele. Past studies have  
250 primarily focused on pharmacogenomics or the risk of cardiovascular and hyperuricemia.<sup>36-41</sup> The

251 association between polymorphisms of *ABG2 rs2231142* genotypes and AF subjects might result  
252 from the influence of hyperuricemia, obesity, hypertension and dyslipidemia, as well as sex  
253 differences caused by estrogen levels, or both.<sup>47</sup> In the study conducted by Doshi et al.,<sup>48</sup> *ABCG2*  
254 expression was examined in male obesity mice. The findings indicated elevated levels of *ABCG2*  
255 protein, suggesting a potential association between increased *ABCG2* expression and obesity-related  
256 AF, although the mechanism of the influence of the *ABCG2 rs2231142* locus on the risk effect of  
257 developing AF still needs to be investigated.

258 **Table S5** shows the similar variant allele frequencies of *ABCB1*, *ABCG2* and *CYP3A5*  
259 genotypes in East Asians from different databases and from the datasets of TWB, suggesting the  
260 robustness of target genotype frequencies in the public-domain databases. The 1000 Genomes  
261 Project (1000Genomes) and the Genome Aggregation Database (gnomAD) are public websites that  
262 respectively encompass data from more than 2,500 individuals representing global populations and  
263 aggregate over 800,000 exome and whole-genome sequences from seven ethnic groups, sharing  
264 summary data with the scientific community (<https://www.internationalgenome.org/> and  
265 <https://reurl.cc/RWnZzg>, accessed on 2024/4/18). The TWB is an ongoing prospective study that  
266 involves over 200,000 individuals aged 20–70 in Taiwan.

267 The distributions of genotype and allelic frequencies in Taiwan and other populations such as  
268 American, European, African, South Asian, Central Asian and East Asian are summarized in **Table**  
269 **S6**. The distributions of allelic frequencies in other populations were taken from the database of  
270 NCBI (<https://www.ncbi.nlm.nih.gov/>, assessed on 2024/4/18). The *ABCB1 rs1128503 G* allele and  
271 *rs4148738 T* allele have a higher prevalence among Africans, with frequencies of 80% and 77%  
272 respectively, while the *ABCG2 T* allele is more common in American, East Asian and Taiwanese  
273 populations consistent with the findings reported by Alrajeh et al.<sup>49</sup> Their reports noted that the  
274 frequency of the allele associated with reduced *ABCG2* function is exceptionally high among  
275 Asians while the frequency of the *CYP3A5 C* allele is lower in African populations, with a  
276 frequency of 31%; interestingly, the prevalence of the *ABCG2 T* allele is higher in East Asian,  
277 Taiwanese and American populations (29.8%, 31.5% and 22.5%, respectively) compared to

278 European, South Asian and African populations (9.8%, 9% and 2.6%, respectively). These  
279 differences may be attributed to factors such as database sources, study designs and ethnicities.

280

## 281 **Conclusion**

282 In conclusion, the findings suggest a strong association between the *ABCG2* *rs2231142* *T* allele  
283 and a higher risk of AF among Taiwanese male subjects, with a 4.5-fold higher risk compared to  
284 controls, and a 1.9-fold risk when combining *ABCG2* genotypes in the overall population. However,  
285 no significant associations were identified between the polymorphisms of *ABCB1* *rs4148738* and  
286 *rs1128503*, as well as *CYP3A5* *rs776746* genotypes and AF risk. Further studies with larger sample  
287 sizes are necessary to investigate the interaction of the *ABCG2* *rs2231142* genotype with AF risk.

288

289 **Acknowledgment**

290 Not applicable.

291

292 **Sources of Funding**

293 This work was supported by grants from Kaohsiung Medical University Hospital  
294 (KMUH108-8R71), Kaohsiung Medical University Research Center Grant (KMU-TC108A01),  
295 from the Integrative Project of National Health Research Institutes and Kaohsiung Medical  
296 University (NHRIKMU-111-I005), Ministry of Science and Technology (MOST  
297 108-2638-B-037-001-MY2).

298

299 **Disclosures**

300 The authors declare that they have no known competing financial interests or personal relationships  
301 that could have appeared to influence the work reported in this paper.

302

303 **Authors' contributions**

304 **Tzu-Yen Lin** was responsible for Methodology, Validation, Investigation, Data curation; **Tzu-Yu**  
305 **Pan** was responsible for Methodology, Validation, Formal analysis, Resources, Data curation,  
306 Writing – original draft and Writing- Reviewing and Editing; **Wei-Chung Tsai** were responsible for  
307 Data Curation and Resources, Writing-Review and editing; **Ming-Tsang Wu** was responsible for  
308 Conceptualization, Writing-Review and editing, Supervision, Project administration, Funding  
309 acquisition.

310

311 **Availability of data and materials**

312 The data are not publicly available due to the nature of information that could compromise the  
313 privacy of research participants.

314

315 **Ethics approval and consent to participate**

316 The study design was approved by the institutional review board of Kaohsiung Medical University  
317 Hospital (KMUHIRB-G(I)-20200040).

318

319 **Supplemental Material**

320 Supplemental Method

321 Tables S1–S6

322 Figure S1

323 References <sup>50</sup>

324

## 325 **References**

- 326 1. Chien K-L, Su T-C, Hsu H-C, Chang W-T, Chen P-C, Chen M-F, Lee Y-T. Atrial fibrillation  
327 prevalence, incidence and risk of stroke and all-cause death among Chinese. *International*  
328 *journal of cardiology*. 2010;139:173-180. doi: 10.1016/j.ijcard.2008.10.045
- 329 2. Andersen JH, Andreassen L, Olesen MS. Atrial fibrillation—a complex polygenetic disease.  
330 *European Journal of Human Genetics*. 2021;29:1051-1060. doi:  
331 10.1038/s41431-020-00784-8
- 332 3. Schnabel RB, Yin X, Gona P, Larson MG, Beiser AS, McManus DD, Newton-Cheh C,  
333 Lubitz SA, Magnani JW, Ellinor PT. 50 year trends in atrial fibrillation prevalence,  
334 incidence, risk factors, and mortality in the Framingham Heart Study: a cohort study. *The*  
335 *Lancet*. 2015;386:154-162. doi: 10.1016/S0140-6736(14)61774-8
- 336 4. Melki S, Salem B, Soulimane A, Serhier Z, Dahdi S. Profile and evolution of the Global  
337 Burden of Morbidity in the Maghreb (Tunisia, Morocco, Algeria). The Triple burden of  
338 morbidity. *La Tunisie Medicale*. 2018;96:760-773.
- 339 5. Zhang J, Johnsen SP, Guo Y, Lip GY. Epidemiology of atrial fibrillation:  
340 geographic/ecological risk factors, age, sex, genetics. *Cardiac electrophysiology clinics*.  
341 2021;13:1-23. doi: 10.1016/j.ccep.2020.10.010
- 342 6. Nanda A, Kabra R. Racial differences in atrial fibrillation epidemiology, management, and  
343 outcomes. *Current Treatment Options in Cardiovascular Medicine*. 2019;21:1-11. doi:  
344 10.1007/s11936-019-0793-5
- 345 7. Tamirisa KP, Al-Khatib SM, Mohanty S, Han JK, Natale A, Gupta D, Russo AM, Al-Ahmad  
346 A, Gillis AM, Thomas KL. Racial and ethnic differences in the management of atrial  
347 fibrillation. *CJC open*. 2021;3:S137-S148. doi: 10.1016/j.cjco.2021.09.004
- 348 8. Čihák R, Haman L, Táborský M. 2016 ESC Guidelines for the management of atrial  
349 fibrillation developed in collaboration with EACTS. *Cor et vasa*. 2016;6:e636-e683. doi:  
350 10.1093/eurheartj/ehw210
- 351 9. Gudbjartsson DF, Holm H, Sulem P, Masson G, Oddsson A, Magnusson OT,  
352 Saemundsdottir J, Helgadottir HT, Helgason H, Johannsdottir H. A frameshift deletion in the  
353 sarcomere gene MYL4 causes early-onset familial atrial fibrillation. *European heart journal*.  
354 2016;ehw379. doi: 10.1093/eurheartj/ehw379
- 355 10. Nattel S. Molecular and cellular mechanisms of atrial fibrosis in atrial fibrillation. *JACC:*  
356 *Clinical Electrophysiology*. 2017;3:425-435. doi: 10.1016/j.jacep.2017.03.002
- 357 11. Baturina O, Chashkina M, Andreev D, Mirzaev K, Bykova A, Suvorov A, Yeryshova D,  
358 Suchkova S, Sychev D, Syrkin A. Pharmacokinetic and Pharmacogenetic Predictors of  
359 Major Bleeding Events in Patients with an Acute Coronary Syndrome and Atrial Fibrillation  
360 Receiving Combined Antithrombotic Therapy. *Journal of Personalized Medicine*.  
361 2023;13:1371. doi: 10.3390/jpm13091371
- 362 12. Chugh SS, Havmoeller R, Narayanan K, Singh D, Rienstra M, Benjamin EJ, Gillum RF,  
363 Kim Y-H, McAnulty Jr JH, Zheng Z-J. Worldwide epidemiology of atrial fibrillation: a  
364 Global Burden of Disease 2010 Study. *Circulation*. 2014;129:837-847. doi:



- 365 10.1161/CIRCULATIONAHA.113.005119
- 366 13. Ishikawa K, Hajjar RJ. Current methods in cardiac gene therapy: overview. *Cardiac Gene*  
367 *Therapy: Methods and Protocols*. 2017;3-14. doi: 10.1007/978-1-4939-6588-5\_1
- 368 14. Christophersen IE, Ravn LS, Budtz-Joergensen E, Skytthe A, Haunsoe S, Svendsen JH,  
369 Christensen K. Familial aggregation of atrial fibrillation: a study in Danish twins.  
370 *Circulation: Arrhythmia and Electrophysiology*. 2009;2:378-383. doi:  
371 10.1161/CIRCEP.108.786665
- 372 15. Lubitz SA, Lunetta KL, Lin H, Arking DE, Trompet S, Li G, Krijthe BP, Chasman DI,  
373 Barnard J, Kleber ME. Novel genetic markers associate with atrial fibrillation risk in  
374 Europeans and Japanese. *Journal of the American College of Cardiology*.  
375 2014;63:1200-1210. doi: 10.1016/j.jacc.2013.12.015
- 376 16. Christophersen IE, Ellinor PT. Genetics of atrial fibrillation: from families to genomes.  
377 *Journal of human genetics*. 2016;61:61-70. doi: 10.1038/jhg.2015.44
- 378 17. Gong IY, Mansell SE, Kim RB. Absence of both MDR 1 (ABCB 1) and Breast Cancer  
379 Resistance Protein (ABCG 2) Transporters Significantly Alters Rivaroxaban Disposition and  
380 Central Nervous System Entry. *Basic & clinical pharmacology & toxicology*.  
381 2013;112:164-170. doi: 10.1111/bcpt.12005
- 382 18. Mizuno T, Fukudo M, Fukuda T, Terada T, Dong M, Kamba T, Yamasaki T, Ogawa O,  
383 Katsura T, Inui K-i. The effect of ABCG2 genotype on the population pharmacokinetics of  
384 sunitinib in patients with renal cell carcinoma. *Therapeutic drug monitoring*.  
385 2014;36:310-316. doi: 10.1097/FTD.0000000000000025
- 386 19. Sychev DA, Sokolov AV, Reshetko OV, Fisenko VP, Sychev IN, Grishina EA, Bochkov PO,  
387 Shevchenko RV, Abdullaev SP, Denisenko NP. Influence of ABCB1, CYP3A5 and CYP3A4  
388 gene polymorphisms on prothrombin time and the residual equilibrium concentration of  
389 rivaroxaban in patients with non-valvular atrial fibrillation in real clinical practice.  
390 *Pharmacogenetics and Genomics*. 2022;32:301-307. doi: 10.1097/FPC.0000000000000483
- 391 20. Sinner MF, Ellinor PT, Meitinger T, Benjamin EJ, Käb S. Genome-wide association studies  
392 of atrial fibrillation: past, present, and future. *Cardiovascular research*. 2011;89:701-709.  
393 doi: 10.1093/cvr/cvr001
- 394 21. König IR, Fuchs O, Hansen G, von Mutius E, Kopp MV. What is precision medicine?  
395 *European respiratory journal*. 2017;50. doi: 10.1183/13993003.00391-2017
- 396 22. Ramaswami R, Bayer R, Galea S. Precision medicine from a public health perspective.  
397 *Annual Review of Public Health*. 2018;39:153-168. doi:  
398 10.1146/annurev-publhealth-040617-014158
- 399 23. Robinson PN. Deep phenotyping for precision medicine. *Human mutation*. 2012;33:777-780.  
400 doi: 10.1002/humu.22080
- 401 24. McGrath S, Ghersi D. Building towards precision medicine: empowering medical  
402 professionals for the next revolution. *BMC medical genomics*. 2016;9:1-6. doi:  
403 10.1186/s12920-016-0183-8
- 404 25. Feng Y-CA, Chen C-Y, Chen T-T, Kuo P-H, Hsu Y-H, Yang H-I, Chen WJ, Su M-W, Chu



- 405 H-W, Shen C-Y. Taiwan Biobank: A rich biomedical research database of the Taiwanese  
406 population. *Cell Genomics*. 2022;2. doi: 10.1016/j.xgen.2022.100197
- 407 26. Dong Z, Guo S, Yang Y, Wu J, Guan M, Zou H, Jin L, Wang J. Association between ABCG  
408 2 Q141K polymorphism and gout risk affected by ethnicity and gender: a systematic review  
409 and meta-analysis. *International journal of rheumatic diseases*. 2015;18:382-391. doi:  
410 10.1111/1756-185X.12519
- 411 27. Zhang D, Ding Y, Wang X, Xin W, Du W, Chen W, Zhang X, Li P. Effects of ABCG2 and  
412 SLCO1B1 gene variants on inflammation markers in patients with hypercholesterolemia and  
413 diabetes mellitus treated with rosuvastatin. *European journal of clinical pharmacology*.  
414 2020;76:939-946. doi: 10.1007/s00228-020-02882-4
- 415 28. Cleophas M, Joosten L, Stamp LK, Dalbeth N, Woodward OM, Merriman TR. ABCG2  
416 polymorphisms in gout: insights into disease susceptibility and treatment approaches.  
417 *Pharmacogenomics and personalized medicine*. 2017:129-142. doi:  
418 10.2147/PGPM.S105854
- 419 29. Kim H, Song T-J, Yee J, Kim D-H, Park J, Gwak HS. ABCG2 gene polymorphisms may  
420 affect the bleeding risk in patients on apixaban and rivaroxaban. *Drug Design, Development  
421 and Therapy*. 2023;25:13-2522. doi: 10.2147/DDDT.S417096
- 422 30. Nakagawa J, Kinjo T, Aiuchi N, Ueno K, Tomita H, Niioka T. Impacts of pregnane X  
423 receptor and cytochrome P450 oxidoreductase gene polymorphisms on trough  
424 concentrations of apixaban in patients with non-valvular atrial fibrillation. *European Journal  
425 of Clinical Pharmacology*. 2023;79:127-135. doi: 10.1007/s00228-022-03424-w
- 426 31. Wang Z, Li Y, He X, Fu Y, Li Y, Zhou X, Dong Z. In vivo evaluation of the pharmacokinetic  
427 interactions between almonertinib and rivaroxaban, almonertinib and apixaban. *Frontiers in  
428 Pharmacology*. 2023;14:1263975. doi: 10.3389/fphar.2023.1263975
- 429 32. Gulilat M, Keller D, Linton B, Pananos AD, Lizotte D, Dresser GK, Alfonsi J, Tirona RG,  
430 Kim RB, Schwarz UI. Drug interactions and pharmacogenetic factors contribute to variation  
431 in apixaban concentration in atrial fibrillation patients in routine care. *Journal of Thrombosis  
432 and Thrombolysis*. 2020;49:294-303. doi: 10.1007/s11239-019-01962-2
- 433 33. Ueshima S, Hira D, Kimura Y, Fujii R, Tomitsuka C, Yamane T, Tabuchi Y, Ozawa T, Itoh H,  
434 Ohno S. Population pharmacokinetics and pharmacogenomics of apixaban in Japanese adult  
435 patients with atrial fibrillation. *British journal of clinical pharmacology*. 2018;84:1301-1312.  
436 doi: 10.1111/bcp.13561
- 437 34. Ueshima S, Hira D, Fujii R, Kimura Y, Tomitsuka C, Yamane T, Tabuchi Y, Ozawa T, Itoh H,  
438 Horie M. Impact of ABCB1, ABCG2, and CYP3A5 polymorphisms on plasma trough  
439 concentrations of apixaban in Japanese patients with atrial fibrillation. *Pharmacogenetics  
440 and genomics*. 2017;27:329-336. doi: 10.1097/FPC.0000000000000294
- 441 35. Nakagawa J, Kinjo T, Iizuka M, Ueno K, Tomita H, Niioka T. Impact of gene  
442 polymorphisms in drug-metabolizing enzymes and transporters on trough concentrations of  
443 rivaroxaban in patients with atrial fibrillation. *Basic & Clinical Pharmacology & Toxicology*.  
444 2021;128:297-304. doi: 10.1111/bcpt.13488

- 445 36. Cheng S-T, Wu S, Su C-W, Teng M-S, Hsu L-A, Ko Y-L. Association of ABCG2  
446 rs2231142-A allele and serum uric acid levels in male and obese individuals in a Han  
447 Taiwanese population. *Journal of the Formosan Medical Association*. 2017;116:18-23. doi:  
448 10.1016/j.jfma.2015.12.002
- 449 37. Kanbay M, Segal M, Afsar B, Kang D-H, Rodriguez-Iturbe B, Johnson RJ. The role of uric  
450 acid in the pathogenesis of human cardiovascular disease. *Heart*. 2013;99:759-766. doi:  
451 10.1136/heartjnl-2012-302535
- 452 38. Liu J, Yang W, Li Y, Wei Z, Dan X. ABCG2 rs2231142 variant in hyperuricemia is modified  
453 by SLC2A9 and SLC22A12 polymorphisms and cardiovascular risk factors in an elderly  
454 community-dwelling population. *BMC Medical Genetics*. 2020;21:1-9. doi:  
455 10.1186/s12881-020-0987-4
- 456 39. Chen JH, Chuang SY, Chen HJ, Yeh WT, Pan WH. Serum uric acid level as an independent  
457 risk factor for all-cause, cardiovascular, and ischemic stroke mortality: a Chinese cohort  
458 study. *Arthritis Care & Research*. 2009;61:225-232. doi: 10.1002/art.24164
- 459 40. Kolz M, Johnson T, Sanna S, Teumer A, Vitart V, Perola M, Mangino M, Albrecht E,  
460 Wallace C, Farrall M. Meta-analysis of 28,141 individuals identifies common variants  
461 within five new loci that influence uric acid concentrations. *PLoS genetics*.  
462 2009;5:e1000504. doi: 10.1371/journal.pgen.1000504
- 463 41. Fu S, Luo L, Ye P, Xiao W. Epidemiological associations between hyperuricemia and  
464 cardiometabolic risk factors: a comprehensive study from Chinese community. *BMC*  
465 *cardiovascular disorders*. 2015;15:1-5. doi: 10.1186/s12872-015-0116-z
- 466 42. Ee PLR, Kamalakaran S, Tonetti D, He X, Ross DD, Beck WT. Identification of a novel  
467 estrogen response element in the breast cancer resistance protein (ABCG2) gene. *Cancer*  
468 *research*. 2004;64:1247-1251. doi: 10.1158/0008-5472.can-03-3583
- 469 43. Chang F-W, Fan H-C, Liu J-M, Fan T-P, Jing J, Yang C-L, Hsu R-J. Estrogen enhances the  
470 expression of the multidrug transporter gene ABCG2—increasing drug resistance of breast  
471 cancer cells through estrogen receptors. *International Journal of Molecular Sciences*.  
472 2017;18:163. doi: 10.3390/ijms18010163
- 473 44. Weng L-C, Choi SH, Klarin D, Smith JG, Loh P-R, Chaffin M, Roselli C, Hulme OL,  
474 Lunetta KL, Dupuis J. Heritability of atrial fibrillation. *Circulation: Cardiovascular*  
475 *Genetics*. 2017;10:e001838. doi: 10.1161/CIRCGENETICS.117.001838
- 476 45. Gudbjartsson DF, Arnar DO, Helgadóttir A, Gretarsdóttir S, Holm H, Sigurdsson A,  
477 Jonasdóttir A, Baker A, Thorleifsson G, Kristjánsson K. Variants conferring risk of atrial  
478 fibrillation on chromosome 4q25. *Nature*. 2007;448:353-357. doi: 10.1038/nature06007
- 479 46. Tucker NR, Clauss S, Ellinor PT. Common variation in atrial fibrillation: navigating the path  
480 from genetic association to mechanism. *Cardiovascular research*. 2016;109:493-501. doi:  
481 10.1093/cvr/cvv283
- 482 47. Maharani N, Ting YK, Cheng J, Hasegawa A, Kurata Y, Li P, Nakayama Y, Ninomiya H,  
483 Ikeda N, Morikawa K. Molecular mechanisms underlying urate-induced enhancement of  
484 Kv1.5 channel expression in HL-1 atrial myocytes. *Circulation Journal*.

- 485 2015;79:2659-2668. doi: 10.1253/circj.CJ-15-0416
- 486 48. Doshi M, Takiue Y, Saito H, Hosoyamada M. The increased protein level of URAT1 was  
487 observed in obesity/metabolic syndrome model mice. *Nucleosides, Nucleotides and Nucleic  
488 Acids*. 2011;30:1290-1294. doi: 10.1080/15257770.2011.603711
- 489 49. Alrajeh K, Roman YM. The frequency of rs2231142 in ABCG2 among Asian subgroups:  
490 implications for personalized rosuvastatin dosing. *Pharmacogenomics*. 2023;24:15-26. doi:  
491 10.2217/pgs-2022-0155
- 492 50. Abdrakhmanov A, Akilzhanova A, Shaimerdinova A, Zhalbinova M, Tuyakova G,  
493 Abildinova S, Albayev R, Ainabekova B, Chinybayeva A, Suleimen Z. The distribution of  
494 the genotypes of ABCB1 and CES1 polymorphisms in Kazakhstani patients with atrial  
495 fibrillation treated with DOAC. *Genes*. 2023;14:1192.  
496

497

498 **Figure Legends**

499

500 **Figure 1.** Flow chart comparing the genetic risk of AF in our study patients and Taiwan biobank's  
501 healthy subjects.

502

503 **Table 1.** Demographic characteristics of atrial fibrillation and their comparison groups

Demographic characteristics	Number (%)	
	Cases (N=141)	TWB-1 (N=141)
<b>Gender</b>		
Male	93 (66.0)	93 (66.0)
Female	48 (34.0)	48 (34.0)
<b>Age (years)</b>		
< 40	1 (0.71)	1(0.71)
40–60	26 (18.44)	26 (18.44)
> 60	114 (80.45)	114 (80.45)
Mean ± SD	66.3±7.8	66.3 ±7.8
Median	68.0	68.0
IQR	63.0-72.0	63.0 - 72.0
<b>Diabetes</b>		
No	106 (75.2)	116 (82.3)
Yes	35 (24.8)	25 (17.7)
<b>Hypertension</b>		
No	91 (64.5)	100 (71.0)
Yes	50 (35.5)	41 (29.0)
<b>HbA1c (%)</b>		
Mean ± SD	6.2±1.1	6.2 ± 1.1
Median	6.0	5.8
IQR	5.6-6.6	5.5-6.3
<b>Serum creatinine (mg/dl)</b>		
Mean ± SD	1.2 ± 0.7	0.8 ± 0.3
Median	1.1	0.8
IQR	0.8-1.3	0.6-0.9
<b>TG (mg/dl)</b>		
Mean ± SD	102.6 ± 53.7	116.5 ± 68.8
Median	90.0	99.0
IQR	66.0-126.0	70.0-134.0
<b>LDL (mg/dl)</b>		
Mean ± SD	78.5 ± 30.8	114.6 ± 28.8
Median	73.9	113.0
IQR	55.8-95.8	95-134

504 **Abbreviations:** TWB, Taiwan Biobank; SD, standard deviation; IQR, interquartile range; HbA1c,  
505 glycated hemoglobin; TG, triglycerides; LDL, low-density lipoprotein cholesterol.

506 **Table 2.** Distribution of *ABCB1*, *ABCG2*, and *CYP3A5* genotypes and odds ratios  
 507 among atrial fibrillation cases and Taiwan biobank controls

Genes/SNPs	Genotypes	Cases (N=141)		TWB-1 <sup>a</sup> (N=141)		Crude OR	AOR <sup>b</sup>
		N	(%)	N	(%)	(95% CI)	(95% CI)
<i>ABCB1</i> -rs1128503	AA	65	46.1	59	41.8	1	1
	AG	63	44.7	66	46.8	0.866 (0.529-1.419)	1.001 (0.531-1.888)
	GG	13	9.2	16	11.4	0.738 (0.327-1.662)	0.465 (0.168-1.285)
	<b>p-trend</b>					0.414	0.271
	AA+AG	128	90.8	125	88.7	1	1
<i>ABCB1</i> -rs4148738	GG	13	9.2	16	11.3	0.793 (0.367-1.717)	0.465 (0.177-1.224)
	TT	48	34.0	48	34.0	1	1
	CT	60	42.6	59	41.8	1.107 (0.594-1.741)	1.190 (0.603-2.349)
	CC	33	23.4	34	24.2	0.971 (0.520-1.812)	0.831 (0.369-1.873)
	<b>p-trend</b>					0.937	0.741
<i>ABCG2</i> -rs2231142	TT+CT	108	76.6	107	75.9	1	1
	CC	33	23.4	34	24.1	0.962 (0.556-1.664)	0.753 (0.368-1.541)
	GG	63	44.7	84	59.6	1	1
	GT	64	45.3	47	33.3	1.816 (1.103-2.989)	1.880 (0.992-3.560)
	TT	14	10.0	10	7.1	1.867 (0.778-4.477)	1.791 (0.599-5.356)
<b>p-trend</b>					<b>0.022</b>	0.072	
<i>CYP3A5</i> -rs776746	GG	63	44.7	84	59.6	1	1
	GT+TT	78	55.3	57	40.4	<b>1.825 (1.137-2.927)</b>	<b>1.912(1.035-3.530)</b>
	CC	63	44.7	65	46.1	1	1
	TC	63	44.7	62	44.0	1.048 (0.640-1.716)	0.879 (0.468-1.652)
	TT	15	10.6	14	9.9	1.105 (0.493-2.476)	1.941 (0.675-5.578)
<b>p-trend</b>					0.786	0.502	
	CC+TC	126	89.4	127	90.1	1	1
	TT	15	10.6	14	9.9	1.080 (0.501-2.330)	2.058 (0.293-2.085)

508 **Abbreviations:** *ABCB1*, ATP binding cassette subfamily B member 1; *ABCG2*, ATP binding  
 509 cassette subfamily G member 2; AOR, adjusted odds ratio; *CYP3A5*, cytochrome P450 3A5; TWB,  
 510 Taiwan Biobank (<https://taiwanview.twbiobank.org.tw/search>).

511 <sup>a</sup> TWB-1 using 1:1 individual matching of age (+/- 1 year) and genders from original 108,829  
 512 subjects.

513 <sup>b</sup> Adjusting by diabetes, hypertension, glycosylated hemoglobin (HbA1c), serum creatinine,  
 514 triglycerides (TG) and low-density lipoprotein cholesterol (LDL).

515

516 **Table 3.** Logistic regression analysis with risk estimates of *ABCB1*, *ABCG2*, and *CYP3A5*  
 517 genotypes in Taiwanese female and male atrial fibrillation patients

Genes/SNPs (N, %)	Cases (N=141)	TWB-1 <sup>a</sup> (N=141)	Crude OR (95%CI)	AOR <sup>b</sup> (95%CI)
<b>Female (N=48)</b>				
<i>ABCB1</i> - <i>rs1128503</i>				
AA	26 (54.2)	19 (39.6)	1	1
AG	20 (41.7)	23 (47.9)	0.635 (0.274-1.475)	0.780 (0.266-2.284)
GG	2 (4.2)	6 (12.5)	0.244 (0.044-1.342)	<b>0.106 (0.015-0.724)</b>
<b>p-trend</b>			0.138	<b>0.047</b>
AA+AG	46 (95.8)	42 (87.5)	1	1
GG	2 (4.2)	6 (12.5)	0.304 (0.058-1.591)	<b>0.118 (0.018-0.761)</b>
<i>ABCB1</i> - <i>rs4148738</i>				
TT	15 (31.3)	17 (35.4)	1	1
CT	17 (35.4)	20 (41.7)	0.963 (0.373-2.488)	1.516 (0.487-4.721)
CC	16 (33.3)	11 (22.9)	1.648 (0.586-4.641)	1.757 (0.522-5.918)
<b>p-trend</b>			0.907	0.349
TT+CT	32 (66.7)	37 (77.1)	1	1
CC	16 (33.3)	11 (22.9)	1.682(0.683-4.144)	1.432 (0.489-4.191)
<i>ABCG2</i> - <i>rs2231142</i>				
GG	26 (54.1)	31 (64.6)	1	1
GT	21 (43.8)	14 (29.2)	1.788 (0.762-4.200)	2.080 (0.771-5.611)
TT	1 (2.1)	3 (6.2)	0.397 (0.039-4.054)	0.143 (0.005-3.803)
<b>p-trend</b>			0.609	0.682
GG	26 (54.1)	31 (64.6)	1	1
GT+TT	22 (45.9)	17 (35.4)	1.543(0.680-3.503)	1.692 (0.631-4.535)
<i>CYP3A5</i> - <i>rs776746</i>				
CC	23 (47.9)	21 (43.8)	1	1
CT	17 (35.4)	22 (45.8)	0.706 (0.297-1.678)	0.714 (0.261-1.951)
TT	8 (16.7)	5 (10.4)	1.461 (0.413-5.172)	2.303 (0.555-9.599)
<b>p-trend</b>			0.757	0.492
CC+CT	40 (83.3)	43 (89.6)	1	1
TT	8 (16.7)	5 (10.4)	1.720(0.519-5.696)	2.767 (0.710-10.784)
<b>Male (N=93)</b>				
<i>ABCB1</i> - <i>rs1128503</i>				
AA	39 (41.9)	40 (43.0)	1	1
AG	43 (46.3)	43 (46.2)	1.026 (0.557-1.889)	1.235 (0.490-3.115)
GG	11 (11.8)	10 (10.8)	1.128 (0.431-2.956)	0.907 (0.215-3.825)
<b>p-trend</b>			0.901	0.922
AA+AG	82 (88.2)	83 (89.2)	1	1
GG	11 (11.8)	10 (10.8)	1.113 (0.449-2.764)	0.792 (0.203-3.100)
<i>ABCB1</i> - <i>rs4148738</i>				
TT	33 (35.5)	31 (33.3)	1	1
CT	43 (46.2)	39 (42.0)	1.036 (0.538-1.993)	0.892 (0.333-2.387)
CC	17 (18.3)	23 (24.7)	0.694 (0.313-1.539)	0.274 (0.071-1.053)

<b>p-trend</b>			0.577	0.089
TT+CT	76 (81.7)	70 (75.3)	1	1
CC	17 (18.3)	23 (24.7)	0.681 (0.336-1.379)	0.317 (0.096-1.048)
<hr/>				
<b>ABCG2- rs2231142</b>				
GG	37 (39.8)	53 (57.0)	1	1
GT	43 (46.2)	33 (35.5)	<b>1.867</b> <b>(1.006-3.463)</b>	1.718 (0.667-4.425)
TT	13 (14.0)	7 (7.5)	2.660 (0.969-7.306)	<b>4.474</b> <b>(1.018-19.671)</b>
<b>p-trend</b>			<b>0.021</b>	<b>0.041</b>
GG	37 (39.8)	53 (57.0)	1	1
GT+TT	56 (60.2)	86 (43.0)	<b>2.005 (1.118-3.596)</b>	2.179 (0.894-5.307)
<hr/>				
<b>CYP3A5- rs776746</b>				
CC	40 (43.0)	44 (47.3)	1	1
CT	46 (49.5)	40 (43.0)	1.265 (0.693-2.311)	0.756 (0.301-1.896)
TT	7 (7.5)	9 (9.7)	0.856 (0.292-2.511)	0.885 (0.139-5.621)
<b>p-trend</b>			0.806	0.646
CC+CT	86 (92.5)	84(90.3)	1	1
TT	7 (7.5)	9 (9.7)	0.760 (0.271-2.133)	1.087 (0.187-6.326)

518 **Abbreviations:** *ABCB1*, ATP binding cassette subfamily B member 1; *ABCG2*, ATP binding  
519 cassette subfamily G member 2; AOR, adjusted odds ratio; *CYP3A5*, cytochrome P450 3A5; TWB,  
520 Taiwan Biobank (<https://taiwanview.twbiobank.org.tw/search>).

521 <sup>a</sup> TWB-1 using 1:1 individual matching of age (+/- 1 year) and genders from original 108,829  
522 subjects.

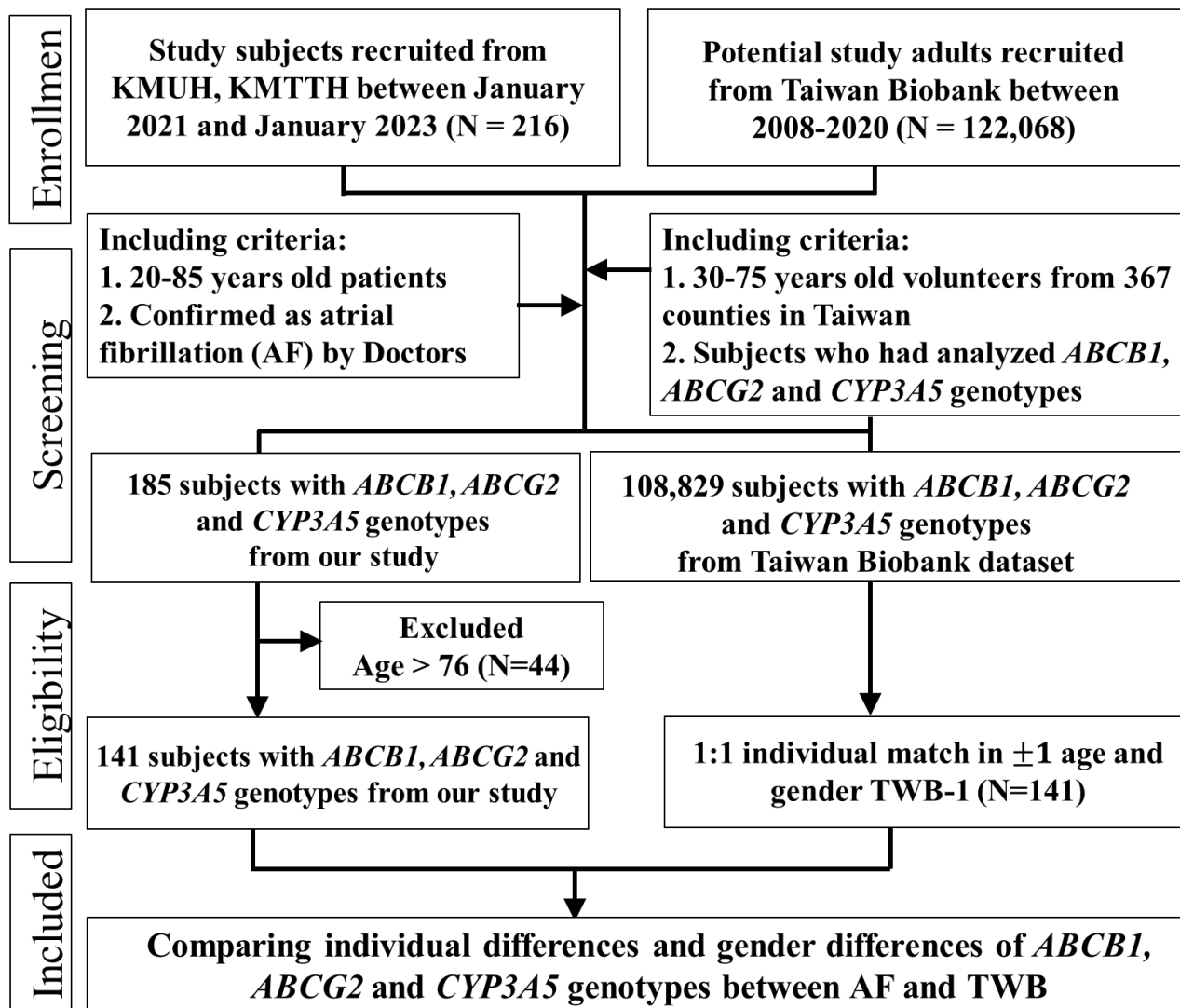
523 <sup>b</sup> Adjusting by diabetes, hypertension, glyated hemoglobin (HbA1c), serum creatinine,  
524 triglycerides (TG) and low-density lipoprotein cholesterol (LDL).

525

526



527



528

529

530 **Figure 1.** Flow chart comparing the genetic risk of AF in our study patients and Taiwan biobank's  
531 healthy subjects.

532

533