

1 **Site-specific DNA methylation in KCNJ11 promoter**  
2 **contributes to type 2 diabetes**

3

4 **Mengmeng Zhu<sup>a,b,1</sup>, Qiaoliang Huang<sup>c,1</sup>, Heng Li<sup>a</sup>, Yujie Zhao<sup>a</sup>, Heming**  
5 **Guo<sup>b</sup>, Tao Wang<sup>b</sup>, Xiaodan Liu<sup>b</sup>, Yun Huang<sup>b</sup>, Ji Hu<sup>b</sup>, Chen Fang<sup>b,\*</sup>, Jian**  
6 **Huang<sup>a\*</sup>**

7

8 <sup>a</sup> School of Biology & Basic Medical Science, Soochow University, Suzhou,  
9 Jiangsu 215123, China.

10 <sup>b</sup> Department of Endocrinology, The Second Affiliated Hospital of Soochow  
11 University, Suzhou, Jiangsu 215004, China

12 <sup>c</sup> Suzhou Center for Disease Control and Prevention, Suzhou, Jiangsu  
13 215000, China

14

15

16

17

18 <sup>1</sup> These authors contributed equally to this work

19 \*Corresponding authors

20

21 **Fang, C. E-mail: [afa9911@sina.com](mailto:afa9911@sina.com)**

22 **Huang, J. E-mail: [huangjian79@suda.edu.cn](mailto:huangjian79@suda.edu.cn)**

23

24

25

26

27

28

29

30

31

32

33

34

35 **Abstract**

36 **Aims:** This study explores the correlation between site-specific  
37 methylation levels of the KCNJ11 promoter and type 2 diabetes mellitus  
38 (T2DM), analyzing potential molecular mechanisms.

39 **Methods:** Thirty patients newly diagnosed with T2DM and 30 healthy  
40 controls were selected to determine the CpG methylation levels in the  
41 promoter region of the KCNJ11 gene using the bisulfite assay. The online  
42 software JASPAR was used to predict transcription factors binding to  
43 differentially methylated sites. Key transcription factors were further validated  
44 through quantitative PCR (q-PCR) and chromatin immunoprecipitation  
45 followed by PCR (ChIP-PCR).

46 **Results:** Methylation at multiple CpG sites within the KCNJ11 gene  
47 promoter was significantly reduced in newly diagnosed T2DM patients  
48 compared to healthy individuals. The methylation status of CpG-471, a site  
49 crucial for the binding of the transcription factor TCF12, emerged as  
50 potentially influential in T2DM pathogenesis. This reduction in methylation at  
51 CpG-471 may enhance TCF12 binding, thereby altering KCNJ11 expression.

52 **Conclusion:** Hypomethylation of specific CpG sites in the promoter region  
53 of the KCNJ11 gene in patients with incipient T2DM potentially contributes to  
54 the disease's pathogenesis. This hypomethylation enhances the  
55 transcriptional activity of TCF12, which binds to these sites, possibly  
56 influencing regulatory pathways involved in pancreatic beta-cell function.

57 **Keywords**

58 Type 2 diabetes; DNA methylation; KCNJ11 gene; TCF12 transcription factor

59

## 60 **1. Introduction**

61 Type 2 diabetes mellitus (T2DM) is a complex polygenic disease[1], primarily  
62 driven by insulin resistance and inadequate insulin production from  $\beta$  cells[2].  
63 According to the updated version of the International Diabetes Federation  
64 (IDF) Diabetes Atlas, more than 500 million patients worldwide have diabetes,  
65 and this number is expected to increase by 20% by 2030 and 46% by 2045[3].  
66 China has the highest prevalence of diabetes and prediabetes, with an  
67 estimated 10.9% of Chinese adults diagnosed with diabetes and 35.7% with  
68 prediabetes[4]. Due to the significant increase in the incidence of T2DM and  
69 its concomitant acute and chronic complications, it is an important cause of  
70 patient death and increased healthcare costs, which brings a huge economic  
71 burden to the society, and there is an urgent need to actively intervene in the  
72 treatment of T2DM from the etiologic and early prevention perspectives[5, 6].  
73 The etiology of T2DM is complex, resulting from a combination of genetic and  
74 environmental factors[7]. An important area of current research is the search  
75 for reliable, sensitive and easily accessible biomarkers for T2DM. In this  
76 context, a growing number of studies[8-13] suggest that genetic and  
77 epigenetic mechanisms together play an important role in the pathogenesis of  
78 T2DM patients.

79

80 Differential variability in DNA methylation, often indicative of epigenetic  
81 dysregulation, is associated with various phenotypes, pathologies, and  
82 adverse environments[9]. Initial epigenetic studies in pancreatic islets and  
83 skeletal muscle of T2DM patients identified altered methylation  
84 patterns[14]. Recent genome-wide DNA methylation studies have confirmed  
85 these findings, revealing altered methylation levels in diabetes-associated  
86 genes like TCF7L2[15], PDX-1[16], CDKN1A[17], FTO[18], and  
87 PPARGC1A[19], with changes in their promoter regions correlating with

88 diabetes risk and severity. Additionally, the KCNJ11 gene, encoding the Kir6.2  
89 subunit of the ATP-sensitive K<sup>+</sup> channel crucial for insulin secretion, has been  
90 linked to T2DM development through both genetic mutations and methylation  
91 changes[20-28]. Research has shown that methylation patterns of KCNJ11  
92 vary by geography and ethnicity, with significant differences observed  
93 between Indian and European T2DM populations[29]. These findings highlight  
94 the complex interplay of genetic and epigenetic factors in T2DM, emphasizing  
95 the potential of methylation studies in understanding and addressing this  
96 widespread disease.

97

98 While genome-wide association studies have extensively documented  
99 changes in methylation patterns, few have focused on methylation at specific  
100 sites. Therefore, our study aims to investigate the correlation between specific  
101 methylation sites in the KCNJ11 gene promoter and the onset of Type 2  
102 Diabetes Mellitus (T2DM), as well as how these modifications affect gene  
103 expression through transcription factor regulation. Supporting literature  
104 suggests that age-related methylation changes detectable in blood could  
105 serve as biomarkers for T2DM[30-32]. To this end, we selected 30 patients  
106 newly diagnosed with T2DM (20 men and 10 women), average age 57.0 ±  
107 13.1 years. We also recruited 30 matched controls—18 males and 12 females,  
108 average age 56.7 ± 10.1 years, all meeting specific criteria for glucose  
109 tolerance. Exclusion criteria were a prior diabetes diagnosis, serious  
110 concurrent conditions, pregnancy, and dropout from follow-up. Comparisons  
111 between baseline data of the two groups showed no significant differences ( $P >$   
112 0.05), confirming their comparability. Preliminary results indicate significantly  
113 decreased methylation at several sites within the KCNJ11 promoter in T2DM  
114 patients compared to controls, particularly at CpG-471—a site crucial for  
115 TCF12 binding—highlighting its potential role in T2DM pathogenesis.

116

## 117 **2. Materials and methods**

### 118 **2.1. Sample collection**

119 After receiving approval from the Institutional Ethics Committee, blood  
120 samples were collected from 30 newly diagnosed patients with T2DM at the  
121 Department of Endocrinology, Second Affiliated Hospital of Soochow  
122 University, and 30 healthy volunteers between November 2022 and  
123 November 2023. Samples were drawn from the patients' arm veins using  
124 disposable sterile syringes and stored in EDTA-containing tubes to prevent  
125 coagulation. Collection occurred after an overnight fast, adhering to the WHO  
126 1999 diagnostic criteria. Patients were informed and voluntarily participated in  
127 the study as advised by their physicians.

### 128 **2.2. DNA extraction**

129 DNA extraction was performed using the TIANamp Genomic DNA kit (DP304;  
130 TIANGEN, Germany) according to the manufacturer's standard procedure.  
131 Genomic DNA was isolated from 200  $\mu$ l of the collected peripheral blood  
132 samples. The purity of the DNA samples was assessed by calculating the  
133 absorbance ratio at 260 nm to 280 nm using an Invitrogen Nanodrop  
134 spectrophotometer. The isolated DNA samples were stored at  $-80^{\circ}\text{C}$  for  
135 further analysis.

### 136 **2.3. McrBC-PCR analysis**

137 McrBC is a GTP-dependent specific nucleic acid endonuclease that acts on  
138 methylcytosine-containing DNA and does not act on unmethylated DNA[33].  
139 The DNA methylation level of the region upstream of the KCNJ11 transcription  
140 start site was detected by McrBC-PCR. McrBC digestion was performed with  
141 at least 200 ng of genomic DNA using the McrBC kit (M0272S; NEB)  
142 according to the manufacturer's instructions. The same amount of DNA  
143 without McrBC digestion was used as a negative control. Primers were  
144 designed using Primer3, sequences of primers used for McrBC PCR are listed

145 in Supplementary Table 1, 50ul of the PCR amplification system was used  
146 and the products were analyzed by electrophoresis on a 1.5% agarose gel.

#### 147 **2.4. Bisulfite sequencing PCR ( BSP )**

148 DNA Bisulfite Conversion Kit (E3318S; NEB) was applied to DNA bisulfite  
149 modification according to the instructions. The total PCR system was 50μL, to  
150 which 6μL of bisulfate-modified DNA template, 25μL of 2×PCR buffer, 2μL  
151 each of upstream and downstream primers were added, and the final volume  
152 was adjusted to 50μL with double-distilled water. The PCR conditions and  
153 setting reaction procedures were as follows: pre-denaturation at 94°C for 3  
154 min, denaturation at 94°C for 30s, annealing at 55°C for 30s, and extension at  
155 72°C for 16s for 35 cycles, and the reaction ended with a final extension at 72°C  
156 for 7 min. The PCR products were electrophoresed in a 2% agarose gel, after  
157 which the target fragments were recovered. The pMD18-T vector (6011,  
158 TaKaRa) was used for TA clonal ligation, followed by transformation of DH5α  
159 receptor cells. Positive clones were selected and sent to AZENTA for  
160 sequencing, and the methylation rate was calculated as the number of  
161 methylated cytosine (mC) clones/10×100%. The sequencing results were  
162 analyzed online according to Web-based Kismeth software ([http://katahdin.](http://katahdin.Mssm.edu/6ismet/revpage.pl)  
163 [Mssm.edu/6ismet/revpage.pl](http://katahdin.Mssm.edu/6ismet/revpage.pl))[34].

164

#### 165 **2.5. Chromatin immunoprecipitation (ChIP) assay**

166 ChIP assay was used to validate the binding of the transcription factor TCF12  
167 to the promoter of the KCNJ11 gene. 293T cells were fixed with formaldehyde,  
168 and glycine was added for cross-linking. The samples were then placed on ice  
169 and sonicated to isolate DNA. Cell lysates were incubated overnight with  
170 antibodies (anti-TCF12 antibody(sc-28364,Santa Cruz Biotechnology) or  
171 control IgG) at a dilution of 1:50 and then with protein G-agarose beads  
172 (#3956088, Merck KgaA, Germany) at 4°C overnight. Mouse control IgG

173 (#3452481, Merck KgaA, Germany) was used as a negative control for the  
174 reaction. The bound DNA-protein mixture was eluted and the cross-linking  
175 was reversed after several washes. The DNA fragments were then purified  
176 and subjected to PCR with the KCNJ11 primer. The PCR products (172 bp)  
177 were separated on a 2% agarose gel and visualized on a UV transilluminator.

178

## 179 **2.6. Bioinformatic analysis**

180 Short reads downloaded from the SRA database with accession SRP274496  
181 were used to produce quality control reports through FastQC (<https://www.bioinformatics.babraham.ac.uk/projects/fastqc/>) and subjected to low-quality filtering  
182 and adapter trimming using EtoKi (<https://pubmed.ncbi.nlm.nih.gov/31809257/>). Clean data were aligned to the reference genome using Hisat2 (<https://pubmed.ncbi.nlm.nih.gov/31375807/>), and the mapped results were sorted using  
183 Samtools (<https://pubmed.ncbi.nlm.nih.gov/19505943/>). Transcriptome assembly and counting were carried out using StringTie (<https://pubmed.ncbi.nlm.nih.gov/25690850/>). Bioinformatic analysis was performed using the R command  
184 line, and differential expression analysis was conducted using edgeR (<https://pubmed.ncbi.nlm.nih.gov/19910308/>). R packages pheatmap (<https://cran.r-project.org/web/packages/pheatmap/index.html>) were used for visualization.

185  
186  
187  
188  
189  
190  
191

## 192 **2.7. Quantitative real time polymerase chain reaction assay**

193 Peripheral blood leukocyte RNA was extracted with TRIzol<sup>TM</sup> Reagent  
194 (15596026CN, Thermo Fisher Scientific), and reverse transcription was  
195 performed according to the instructions of the HiScript II Q RT SuperMix for  
196 qPCR(+gDNA wiper)( R223,Vazyme) kit. The total volume of the QPCR  
197 amplification mixture was 10 $\mu$ L, and 1 $\mu$ L of cDNA template, 5 $\mu$ L of 2\*ChamQ  
198 SYBR qPCR Master Mix (Q341,Vazyme.), and 0.2 $\mu$ L of upstream and  
199 downstream primers were added. The volume was adjusted to a final volume  
200 of 10 $\mu$ L with double-distilled water. The PCR conditions and the setup of the  
201

202 reaction program were as follows: pre-denaturation at 95 °C for 180s,  
203 denaturation at 95°C for 15s, and annealing and extension at 60°C for 60s,  
204 and the reaction was run for 39 cycles.

205

## 206 **2.8. Statistical analysis**

207 The data are presented as the mean  $\pm$  SD. Differences in mean values  
208 between two groups were analyzed using the two-tailed t-test. Statistical  
209 analyses were performed using the GraphPad Prism version 6.0 (GraphPad  
210 Software, USA). \*p < 0.05, \*\*p < 0.01, \*\*\*p < 0.001 or \*\*\*\*p < 0.0001 were  
211 considered statistically significant.

212

## 213 **3. Results**

214

### 215 **3.1. Clinical characteristics of the study population**

216 To maintain a consistent genetic background and characterize the course of  
217 the disease, several potential confounders were considered in this study  
218 based on the literature and clinical judgment. Covariates included age, sex,  
219 body mass index, smoking status, alcohol consumption status, family history,  
220 physical activity, creatinine, total cholesterol, triglyceride, and low-density  
221 lipoprotein levels of the included subjects. The data included in this study  
222 were categorized into two types of continuous and categorical variables.  
223 Continuous variables are expressed as the mean  $\pm$  standard deviation and  
224 were subjected to t-test (normal distribution) or Kruskal-Wallis rank sum test  
225 (non-normal distribution) depending on the normality of the distribution;  
226 categorical variables were expressed as percentages and were subjected to  
227 the  $\chi^2$  test (**Table 1**). The subjects were divided into a healthy control group  
228 and a first-onset type 2 diabetes group according to the WHO 1999 diabetes  
229 diagnostic criteria. After the application of strict inclusion criteria, Table 1  
230 shows that the differences between the two groups were statistically



231 significant only for fasting blood glucose, two-hour postprandial blood glucose,  
232 and glycosylated hemoglobin( $P<0.001$ ).

233

### 234 **3.2. McrBC-PCR analysis**

235 Agarose gel electrophoresis of the PCR products of diabetic and healthy  
236 control samples with the same amount of DNA before and after 1h of McrBC  
237 digestion and analysis of gray values are shown in (**Fig. 1**). The results  
238 demonstrated that DNA methylation modification exists in the promoter region  
239 of the KCNJ11 gene in patients with first-onset T2DM and healthy controls,  
240 and that the degree of methylation modification in healthy control samples is  
241 likely to be greater than that in patients with first-onset T2DM.

242

### 243 **3.3. BSP results confirm differences in site-specific methylation of the** 244 **KCNJ11 promoter region between healthy controls and patients with** 245 **first-onset T2DM**

246 We analyzed DNA methylation at selected locations in this region in the  
247 healthy and T2DM groups using the bisulfite sequencing method, as shown in  
248 Figure 2B, and the results based on Kismeth software analysis showed an  
249 overall decrease in cytosine methylation levels from 22.22% to 3.33%.

250

251 Moreover, after bisulfite modification treatment and sequencing of positive  
252 clones, it was demonstrated that there were methylation sites at nine sites,  
253 including CpG-449, CpG-454, CpG-471, CpG-499, CpG-504, CpG-510, CpG-  
254 513, CpG-520, and CpG-539. The methylation ratios of the above loci were  
255 significantly lower in patients in the type 2 diabetes group, whereas they were  
256 hypermethylated in the healthy normal control group. Moreover, at the CpG-  
257 471 locus, the methylation rate was decreased by approximately 7.55% in the  
258 T2DM group compared with that in the healthy control group (**Fig. 2C**).

259

### 260 **3.4. Binding of differentially methylated sites in the promoter region of**

## 261 **the KCNJ11 gene to the transcription factor TCF12**

262 DNA methylation has been extensively studied over the past few decades,  
263 and the attachment of methyl groups to the promoter region of a gene might  
264 inhibit transcription factor binding, and hence usually reduce transcription; the  
265 opposite phenomenon also holds true[35, 36]. The results analyzed by  
266 JASPAR and AlphaFold online software showed that the presence of TCF12  
267 transcription factor binds to the promoter region of the KCNJ11 gene near the  
268 differentially methylated site CpG-471, which may explain the  
269 hypomethylation of the KCNJ11 promoter region in patients with T2DM, which  
270 can affect protein expression by enhancing the activity of the transcription  
271 factor TCF12 and thus predispose them to developing T2DM (**Fig. 3A**). CHIP-  
272 PCR gel electrophoresis revealed target bands in the input group and anti-  
273 TCF12 group but no bands in the IgG or blank group (**Fig. 3B**), which also  
274 confirmed that the transcription factor TCF12 binds to the promoter region of  
275 the KCNJ11 gene and may be involved in the methylation changes at specific  
276 loci of the KCNJ11 gene, possibly influencing the regulatory pathways  
277 involved in pancreatic beta-cell function.

278

### 279 **3.5. KCNJ11 expression in human peripheral blood**

280 The RNA-seq data from 12 blood samples obtained from the SRA database,  
281 including 6 from healthy individuals and 6 from type 2 diabetes patients, were  
282 included in the analysis. Differential gene expression analysis revealed that  
283 the KCNJ11 gene was upregulated in the type 2 diabetes group (logFC =  
284 1.478151,  $p = 0.09869249$ , FDR = 0.3574878) (**Fig. 4A**). We then extracted  
285 RNA from fresh peripheral blood of enrolled healthy controls and T2DM  
286 patients for semi-quantitative analysis of the KCNJ11 gene, and the results  
287 demonstrated that KCNJ11 mRNA expression was increased in peripheral  
288 blood from patients with T2DM compared with that in peripheral blood from  
289 healthy controls ( $p < 0.001$ ) (**Fig. 4B**).

290

#### 291 **4. Discussion**

292 In this study, BSP-sequencing was utilized to examine methylation levels at  
293 specific sites within the KCNJ11 gene promoter in blood samples from  
294 individuals at the early stages of Type 2 Diabetes Mellitus (T2DM). Employing  
295 bisulfite conversion, a well-established technique for DNA cytosine  
296 methylation analysis[37], our results demonstrated distinct differences in  
297 methylation patterns at several critical sites between newly diagnosed T2DM  
298 patients and healthy controls.

299 The current literature establishes a clear link between DNA methylation at  
300 gene promoters, CpG islands, and proximal gene body sites with changes in  
301 transcriptional activity and gene expression[38, 39]. Our findings reinforce this  
302 paradigm, revealing significant hypomethylation at pivotal sites within the  
303 KCNJ11 promoter in T2DM subjects. This epigenetic alteration likely facilitates  
304 increased binding of the transcription factor TCF12, potentially augmenting  
305 protein expression and, consequently, T2DM susceptibility. This observation  
306 underscores the therapeutic potential of targeting TCF12, not only enhancing  
307 our understanding of its regulatory mechanisms but also promoting it as a  
308 viable target for T2DM treatment.

309 Research within the diabetes field is predominantly focused on two  
310 approaches: comprehensive scans for differential DNA methylation across the  
311 genome[40] and targeted investigations into known diabetes-associated  
312 genes using specific primers to pinpoint differential methylation[15, 16, 41, 42].  
313 Our study's focus on the KCNJ11 promoter methylation contributes  
314 significantly to the broader epigenetic narrative of T2DM pathogenesis, paving  
315 the way for novel insights into disease mechanisms and therapeutic  
316 innovation[43]. The role of methylation in other gene loci related to diabetes  
317 progression remains an open question warranting further exploration.

318 With diabetes prevalence increasing globally, the imperative for innovative  
319 therapeutic approaches is more pressing than ever. Future treatment

320 modalities might include epigenetic editing of specific genes[44], a strategy  
321 supported by emerging research advocating for targeting the enzymes that  
322 modify epigenetic landscapes in tissues affected by diabetes[45, 46].  
323 Moreover, epigenetic changes in diabetic patients have been increasingly  
324 associated with severe vascular complications, such as retinopathy, stroke,  
325 and myocardial infarction[47-49]. Identifying epigenetic biomarkers, readily  
326 detectable in blood and derivative from target tissues, could profoundly impact  
327 clinical practices by facilitating easier analysis in diabetic and at-risk  
328 populations. However, the discovery of epigenetic markers with superior  
329 predictive strength over existing diabetes indicators remains a critical  
330 research need.

331 In summary, our study has identified significant epigenetic modifications in the  
332 promoter of the KCNJ11 gene in patients with T2DM, highlighting a robust link  
333 between epigenetics and the pathophysiology of diabetes in humans. These  
334 epigenetic markers offer promising avenues as biomarkers for predicting  
335 T2DM, gauging the risk of vascular complications, and assessing the efficacy  
336 of therapeutic and lifestyle interventions, thus heralding a new era of precision  
337 medicine in diabetes care.

### 338 **Acknowledgements**

339 This research was supported by grants from the National Natural Science  
340 Foundation of China (82371544,82070814); Suzhou Healthcare Science and  
341 Technology Innovation Program (SKYD2022030); Open project of Jiangsu  
342 Health Development Research Center (JSHD2022035); A Project Funded by  
343 the Priority Academic Program Development of Jiangsu Higher Education  
344 Institutions.

### 345 **Conflict of interest**

346 None declared.

347

348

349

350

351

## 352 REFERENCES

- 353 [1]. Gloyn AL, McCarthy MI. The genetics of type 2 diabetes. *Best Pract Res*  
354 *Clin Endocrinol Metab.* 2001;15:293-308.[http://dx.doi.org/10.1053/beem.2](http://dx.doi.org/10.1053/beem.2001.0147)  
355 [001.0147](http://dx.doi.org/10.1053/beem.2001.0147)
- 356 [2]. Taylor R. Type 2 diabetes: etiology and reversibility. *Diabetes Care.* 2013;  
357 36:1047-55.<http://dx.doi.org/10.2337/dc12-1805>
- 358 [3]. Sun H, Saeedi P, Karuranga S, Pinkepank M, Ogurtsova K, Duncan BB, e  
359 t al. IDF Diabetes Atlas: Global, regional and country-level diabetes preva  
360 lence estimates for 2021 and projections for 2045. *Diabetes Res Clin Pra*  
361 *ct.* 2022;183:109119.<http://dx.doi.org/10.1016/j.diabres.2021.109119>
- 362 [4]. Wang L, Gao P, Zhang M, Huang Z, Zhang D, Deng Q, et al. Prevalence  
363 and Ethnic Pattern of Diabetes and Prediabetes in China in 2013. *JAMA.*  
364 2017;317:2515-23.<http://dx.doi.org/10.1001/jama.2017.7596>
- 365 [5]. Zheng Y, Ley SH, Hu FB. Global aetiology and epidemiology of type 2 dia  
366 betes mellitus and its complications. *Nat Rev Endocrinol.* 2018;14:88-98.  
367 <http://dx.doi.org/10.1038/nrendo.2017.151>
- 368 [6]. Zhuo X, Zhang P, Hoerger TJ. Lifetime direct medical costs of treating typ  
369 e 2 diabetes and diabetic complications. *Am J Prev Med.* 2013;45:253-61.  
370 <http://dx.doi.org/10.1016/j.amepre.2013.04.017>
- 371 [7]. Kharroubi AT, Darwish HM. Diabetes mellitus: The epidemic of the century.  
372 *World J Diabetes.* 2015;6:850-67.<http://dx.doi.org/10.4239/wjd.v6.i6.850>
- 373 [8]. Bernstein D, Golson ML, Kaestner KH. Epigenetic control of beta-cell func  
374 tion and failure. *Diabetes Res Clin Pract.* 2017;123:24-36.[http://dx.doi.org](http://dx.doi.org/10.1016/j.diabres.2016.11.009)  
375 [/10.1016/j.diabres.2016.11.009](http://dx.doi.org/10.1016/j.diabres.2016.11.009)
- 376 [9]. Ling C, Rönn T. Epigenetics in Human Obesity and Type 2 Diabetes. *Cell*  
377 *Metab.* 2019;29:1028-44.<http://dx.doi.org/10.1016/j.cmet.2019.03.009>
- 378 [10]. Wren JD, Garner HR. Data-mining analysis suggests an epigenetic path  
379 ogenesis for type 2 diabetes. *J Biomed Biotechnol.* 2005;2005:104-12.[htt](http://dx.doi.org/10.1155/JBB.2005.104)  
380 [p://dx.doi.org/10.1155/JBB.2005.104](http://dx.doi.org/10.1155/JBB.2005.104)
- 381 [11]. McCarthy MI. Genomics, type 2 diabetes, and obesity. *N Engl J Med.* 201  
382 0;363:2339-50.<http://dx.doi.org/10.1056/NEJMra0906948>
- 383 [12]. Ling C, Groop L. Epigenetics: a molecular link between environmental fa  
384 ctors and type 2 diabetes. *Diabetes.* 2009;58:2718-25.[http://dx.doi.org/10.](http://dx.doi.org/10.2337/db09-1003)  
385 [2337/db09-1003](http://dx.doi.org/10.2337/db09-1003)
- 386 [13]. Ronn T, Ling C. DNA methylation as a diagnostic and therapeutic target i  
387 n the battle against Type 2 diabetes. *Epigenomics.* 2015;7:451-60.[http://d](http://dx.doi.org/10.2217/epi.15.7)  
388 [x.doi.org/10.2217/epi.15.7](http://dx.doi.org/10.2217/epi.15.7)
- 389 [14]. Barres R, Osler ME, Yan J, Rune A, Fritz T, Caidahl K, et al. Non-CpG m

- 390 ethylation of the PGC-1alpha promoter through DNMT3B controls mitoch  
391 ondrial density. *Cell Metab.* 2009;10:189-98. <http://dx.doi.org/10.1016/j.cmet.2009.07.011>
- 392
- 393 [15]. Smail HO, Mohamad DA. Identification of DNA methylation change in TC  
394 F7L2 gene in the blood of type 2 diabetes mellitus as a predictive biomar  
395 ker in Iraq Kurdistan region by using methylation-specific PCR. *Endocr R*  
396 *egul.* 2023;57:53-60. <http://dx.doi.org/10.2478/enr-2023-0007>
- 397 [16]. Yang BT, Dayeh TA, Volkov PA, Kirkpatrick CL, Malmgren S, Jing X, et al.  
398 Increased DNA methylation and decreased expression of PDX-1 in pancr  
399 eatic islets from patients with type 2 diabetes. *Mol Endocrinol.* 2012;26:12  
400 03-12. <http://dx.doi.org/10.1210/me.2012-1004>
- 401 [17]. Dayeh T, Volkov P, Salo S, Hall E, Nilsson E, Olsson AH, et al. Genome-  
402 wide DNA methylation analysis of human pancreatic islets from type 2 dia  
403 betic and non-diabetic donors identifies candidate genes that influence in  
404 sulin secretion. *PLoS Genet.* 2014;10:e1004160. <http://dx.doi.org/10.1371/journal.pgen.1004160>
- 405
- 406 [18]. Toperoff G, Aran D, Kark JD, Rosenberg M, Dubnikov T, Nissan B, et al.  
407 Genome-wide survey reveals predisposing diabetes type 2-related DNA  
408 methylation variations in human peripheral blood. *Hum Mol Genet.* 2012;  
409 21:371-83. <http://dx.doi.org/10.1093/hmg/ddr472>
- 410 [19]. Ling C, Del Guerra S, Lupi R, Ronn T, Granhall C, Luthman H, et al. Epig  
411 enetic regulation of PPARGC1A in human type 2 diabetic islets and effect  
412 on insulin secretion. *Diabetologia.* 2008;51:615-22. <http://dx.doi.org/10.1007/s00125-007-0916-5>
- 413
- 414 [20]. Dreszer TR, Karolchik D, Zweig AS, Hinrichs AS, Raney BJ, Kuhn RM, et  
415 al. The UCSC Genome Browser database: extensions and updates 2011. *Nucleic Acids Res.* 2012;40:D918-23. <http://dx.doi.org/10.1093/nar/gkr105>
- 416
- 417
- 418 [21]. Ashcroft FM. ATP-sensitive potassium channelopathies: focus on insulin  
419 secretion. *J Clin Invest.* 2005;115:2047-58. <http://dx.doi.org/10.1172/JCI25495>
- 420
- 421 [22]. Inagaki N, Gono T, Clement JPt, Namba N, Inazawa J, Gonzalez G, et al.  
422 Reconstitution of IKATP: an inward rectifier subunit plus the sulfonylurea  
423 receptor. *Science.* 1995;270:1166-70. <http://dx.doi.org/10.1126/science.270.5239.1166>
- 424
- 425 [23]. Wieland I, Schanze I, Felgendreher IM, Barthlen W, Vogelgesang S, Moh  
426 nike K, et al. Integration of genomic analysis and transcript expression of  
427 ABCC8 and KCNJ11 in focal form of congenital hyperinsulinism. *Front En*  
428 *docrinol (Lausanne).* 2022;13:1015244. <http://dx.doi.org/10.3389/fendo.2022.1015244>
- 429
- 430 [24]. Tarasov AI, Welters HJ, Senkel S, Ryffel GU, Hattersley AT, Morgan NG,  
431 et al. A Kir6.2 mutation causing neonatal diabetes impairs electrical activit  
432 y and insulin secretion from INS-1 beta-cells. *Diabetes.* 2006;55:3075-82.  
433 <http://dx.doi.org/10.2337/db06-0637>



- 434 [25]. Gloyn AL, Pearson ER, Antcliff JF, Proks P, Bruining GJ, Slingerland AS,  
435 et al. Activating mutations in the gene encoding the ATP-sensitive potassi-  
436 um-channel subunit Kir6.2 and permanent neonatal diabetes. *N Engl J M*  
437 *ed.* 2004;350:1838-49. <http://dx.doi.org/10.1056/NEJMoa032922>
- 438 [26]. Schwanstecher C, Meyer U, Schwanstecher M. K(IR)6.2 polymorphism p  
439 redisposes to type 2 diabetes by inducing overactivity of pancreatic beta-  
440 cell ATP-sensitive K(+) channels. *Diabetes.* 2002;51:875-9. [http://dx.doi.or](http://dx.doi.org/10.2337/diabetes.51.3.875)  
441 [g/10.2337/diabetes.51.3.875](http://dx.doi.org/10.2337/diabetes.51.3.875)
- 442 [27]. Schwanstecher C, Neugebauer B, Schulz M, Schwanstecher M. The co  
443 mmon single nucleotide polymorphism E23K in K(IR)6.2 sensitizes pancr  
444 eatic beta-cell ATP-sensitive potassium channels toward activation throug  
445 h nucleoside diphosphates. *Diabetes.* 2002;51 Suppl 3:S363-7. <http://dx.d>  
446 [oi.org/10.2337/diabetes.51.2007.s363](http://dx.doi.org/10.2337/diabetes.51.2007.s363)
- 447 [28]. Fujita PA, Rhead B, Zweig AS, Hinrichs AS, Karolchik D, Cline MS, et al.  
448 The UCSC Genome Browser database: update 2011. *Nucleic Acids Res.*  
449 2011;39:D876-82. <http://dx.doi.org/10.1093/nar/gkq963>
- 450 [29]. Elliott HR, Walia GK, Duggirala A, Groom A, Reddy SU, Chandak GR, et  
451 al. Migration and DNA methylation: a comparison of methylation patterns i  
452 n type 2 diabetes susceptibility genes between indians and europeans. *J*  
453 *Diabetes Res Clin Metab.* 2013;2:6. <http://dx.doi.org/10.7243/2050-0866-2>  
454 [-6](http://dx.doi.org/10.7243/2050-0866-2-6)
- 455 [30]. Bacos K, Gillberg L, Volkov P, Olsson AH, Hansen T, Pedersen O, et al.  
456 Blood-based biomarkers of age-associated epigenetic changes in human  
457 islets associate with insulin secretion and diabetes. *Nat Commun.* 2016;7:  
458 11089. <http://dx.doi.org/10.1038/ncomms11089>
- 459 [31]. Bysani M, Perfilyev A, de Mello VD, Ronn T, Nilsson E, Pihlajamaki J, et  
460 al. Epigenetic alterations in blood mirror age-associated DNA methylation  
461 and gene expression changes in human liver. *Epigenomics.* 2017;9:105-  
462 22. <http://dx.doi.org/10.2217/epi-2016-0087>
- 463 [32]. Ronn T, Volkov P, Gillberg L, Kokosar M, Perfilyev A, Jacobsen AL, et al.  
464 Impact of age, BMI and HbA1c levels on the genome-wide DNA methylati  
465 on and mRNA expression patterns in human adipose tissue and identifica  
466 tion of epigenetic biomarkers in blood. *Hum Mol Genet.* 2015;24:3792-81  
467 3. <http://dx.doi.org/10.1093/hmg/ddv124>
- 468 [33]. Sutherland E, Coe L, Raleigh EA. McrBC: a multisubunit GTP-dependent  
469 restriction endonuclease. *J Mol Biol.* 1992;225:327-48. <http://dx.doi.org/1>  
470 [0.1016/0022-2836\(92\)90925-a](http://dx.doi.org/10.1016/0022-2836(92)90925-a)
- 471 [34]. Gruntman E, Qi Y, Slotkin RK, Roeder T, Martienssen RA, Sachidananda  
472 m R. Kismeth: analyzer of plant methylation states through bisulfite seque  
473 ncing. *BMC Bioinformatics.* 2008;9:371. <http://dx.doi.org/10.1186/1471-21>  
474 [05-9-371](http://dx.doi.org/10.1186/1471-2105-9-371)
- 475 [35]. Volkov P, Bacos K, Ofori JK, Esguerra JL, Eliasson L, Ronn T, et al. Whol  
476 e-Genome Bisulfite Sequencing of Human Pancreatic Islets Reveals Nov  
477 el Differentially Methylated Regions in Type 2 Diabetes Pathogenesis. *Dia*

- 478           betes. 2017;66:1074-85.<http://dx.doi.org/10.2337/db16-0996>
- 479 [36]. Jones PA. Functions of DNA methylation: islands, start sites, gene bodie  
480 s and beyond. *Nat Rev Genet.* 2012;13:484-92.[http://dx.doi.org/10.1038/](http://dx.doi.org/10.1038/nrg3230)  
481 [nrg3230](http://dx.doi.org/10.1038/nrg3230)
- 482 [37]. Gouil Q, Keniry A. Latest techniques to study DNA methylation. *Essays B*  
483 *iochem.* 2019;63:639-48.<http://dx.doi.org/10.1042/EBC20190027>
- 484 [38]. Yang X, Han H, De Carvalho DD, Lay FD, Jones PA, Liang G. Gene bod  
485 y methylation can alter gene expression and is a therapeutic target in can  
486 cer. *Cancer Cell.* 2014;26:577-90.[http://dx.doi.org/10.1016/j.ccr.2014.07.0](http://dx.doi.org/10.1016/j.ccr.2014.07.028)  
487 [28](http://dx.doi.org/10.1016/j.ccr.2014.07.028)
- 488 [39]. Irizarry RA, Ladd-Acosta C, Wen B, Wu Z, Montano C, Onyango P, et al.  
489 The human colon cancer methylome shows similar hypo- and hypermeth  
490 ylation at conserved tissue-specific CpG island shores. *Nat Genet.* 2009;  
491 41:178-86.<http://dx.doi.org/10.1038/ng.298>
- 492 [40]. Volkmar M, Dedeurwaerder S, Cunha DA, Ndlovu MN, Defrance M, Depl  
493 us R, et al. DNA methylation profiling identifies epigenetic dysregulation i  
494 n pancreatic islets from type 2 diabetic patients. *EMBO J.* 2012;31:1405-  
495 26.<http://dx.doi.org/10.1038/emboj.2011.503>
- 496 [41]. Fatima N, Schooley JF, Jr., Claycomb WC, Flagg TP. Promoter DNA met  
497 hylation regulates murine SUR1 (Abcc8) and SUR2 (Abcc9) expression i  
498 n HL-1 cardiomyocytes. *PLoS One.* 2012;7:e41533.[http://dx.doi.org/10.13](http://dx.doi.org/10.1371/journal.pone.0041533)  
499 [71/journal.pone.0041533](http://dx.doi.org/10.1371/journal.pone.0041533)
- 500 [42]. Yang BT, Dayeh TA, Kirkpatrick CL, Taneera J, Kumar R, Groop L, et al. I  
501 nsulin promoter DNA methylation correlates negatively with insulin gene e  
502 xpression and positively with HbA(1c) levels in human pancreatic islets. *D*  
503 *iabetologia.* 2011;54:360-7.<http://dx.doi.org/10.1007/s00125-010-1967-6>
- 504 [43]. Kota SK, Meher LK, Jammula S, Kota SK, Modi KD. Genetics of type 2 d  
505 iabetes mellitus and other specific types of diabetes; its role in treatment  
506 modalities. *Diabetes Metab Syndr.* 2012;6:54-8.[http://dx.doi.org/10.1016/j.](http://dx.doi.org/10.1016/j.dsx.2012.05.014)  
507 [dsx.2012.05.014](http://dx.doi.org/10.1016/j.dsx.2012.05.014)
- 508 [44]. Chen H, Kazemier HG, de Groote ML, Ruiters MH, Xu GL, Rots MG. Ind  
509 uced DNA demethylation by targeting Ten-Eleven Translocation 2 to the h  
510 uman ICAM-1 promoter. *Nucleic Acids Res.* 2014;42:1563-74.[http://dx.doi.](http://dx.doi.org/10.1093/nar/gkt1019)  
511 [org/10.1093/nar/gkt1019](http://dx.doi.org/10.1093/nar/gkt1019)
- 512 [45]. Christensen DP, Dahllof M, Lundh M, Rasmussen DN, Nielsen MD, Billes  
513 trup N, et al. Histone deacetylase (HDAC) inhibition as a novel treatment  
514 for diabetes mellitus. *Mol Med.* 2011;17:378-90.[http://dx.doi.org/10.2119/](http://dx.doi.org/10.2119/molmed.2011.00021)  
515 [molmed.2011.00021](http://dx.doi.org/10.2119/molmed.2011.00021)
- 516 [46]. Christensen DP, Gysemans C, Lundh M, Dahllof MS, Noesgaard D, Sch  
517 midt SF, et al. Lysine deacetylase inhibition prevents diabetes by chroma  
518 tin-independent immunoregulation and beta-cell protection. *Proc Natl Aca*  
519 *d Sci U S A.* 2014;111:1055-9.<http://dx.doi.org/10.1073/pnas.1320850111>
- 520 [47]. Agardh E, Lundstig A, Perfilyev A, Volkov P, Freiburghaus T, Lindholm E,  
521 et al. Genome-wide analysis of DNA methylation in subjects with type 1 di



522 abetes identifies epigenetic modifications associated with proliferative dia  
523 betic retinopathy. BMC Med. 2015;13:182.[http://dx.doi.org/10.1186/s1291](http://dx.doi.org/10.1186/s12916-015-0421-5)  
524 [6-015-0421-5](http://dx.doi.org/10.1186/s12916-015-0421-5)

525 [48]. Chen Z, Miao F, Paterson AD, Lachin JM, Zhang L, Schones DE, et al. E  
526 pigenomic profiling reveals an association between persistence of DNA m  
527 ethylation and metabolic memory in the DCCT/EDIC type 1 diabetes coh  
528 ort. Proc Natl Acad Sci U S A. 2016;113:E3002-11.[http://dx.doi.org/10.107](http://dx.doi.org/10.1073/pnas.1603712113)  
529 [3/pnas.1603712113](http://dx.doi.org/10.1073/pnas.1603712113)

530 [49]. Nakatochi M, Ichihara S, Yamamoto K, Naruse K, Yokota S, Asano H, et  
531 al. Epigenome-wide association of myocardial infarction with DNA methyl  
532 ation sites at loci related to cardiovascular disease. Clin Epigenetics. 201  
533 7;9:54.<http://dx.doi.org/10.1186/s13148-017-0353-3>

534

535

536

537

538

539

540

541

542

543

544

545

546

547

548

549

550

551

552

553

554

555

556

557

558

559

560

561

562

563

564

565

566

567

568

569

570

571

572

**Table 1 -**

<b>TABLE 1. Clinical Characteristics of the subjects</b>			
Parameters	Healthy controls	T2DM	P value
n (male/female)	30(20/10)	30(18/12)	
Age (year)	56.7±10.1	57.0±13.1	1
BMI (kg/m <sup>2</sup> )	25.9±3.6	28.5±4.7	0.13
HbA1c(%)	5.7±0.8	7.3±1.2	0.00010
FBG(mmol/L)	4.9±0.5	8.3±1.1	0.00010
PBG (mmol/L)	6.8±0.6	12.4±0.5	0.00010
Family history	4(13.3%)	8(26.67%)	0.36
Smoking	5(16.67%)	7(23.33%)	0.747
Alcohol	5(16.67%)	9(30%)	0.36
Physical activity	12(40%)	10(33.33%)	0.789
Scr (umol/L)	95.51±0.4	96.35±0.6	0.763
TG(mmol/l)	1.54±0.3	1.59±0.5	0.543
TC(mmol/l)	4.34±0.2	4.39±0.4	0.893
LDL-C(mmol/L)	2.83±0.25	2.86±0.34	0.895

573 Data are presented as mean ± standard deviation or as a number (%) of  
574 participants. Kruskal Wallis test was used for statistical analysis. Abbreviations:  
575 BMI – body mass index; HbA1c – hemoglobin A1c; FBG – fasting blood  
576 glucose; PBG – postprandial blood glucose; Scr – serum creatinine; TG –  
577 triglyceride; TC – serum total cholesterol; LDL-C – low-density lipoprotein  
578 cholesterol; p – statistical significance.

579

580

581

582

583

584

585

586

587

588

589

590

591

592

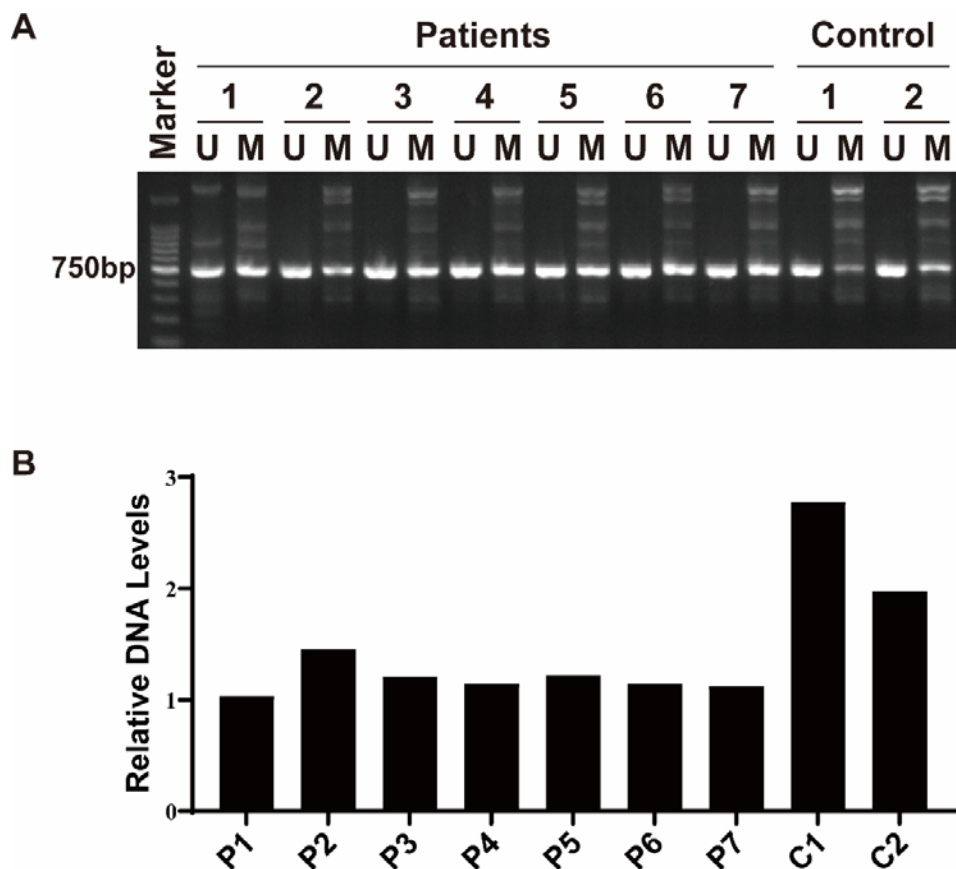
593

594

595

596

597



598

599

**FIG. 1.**

600

601

602

603

604

605

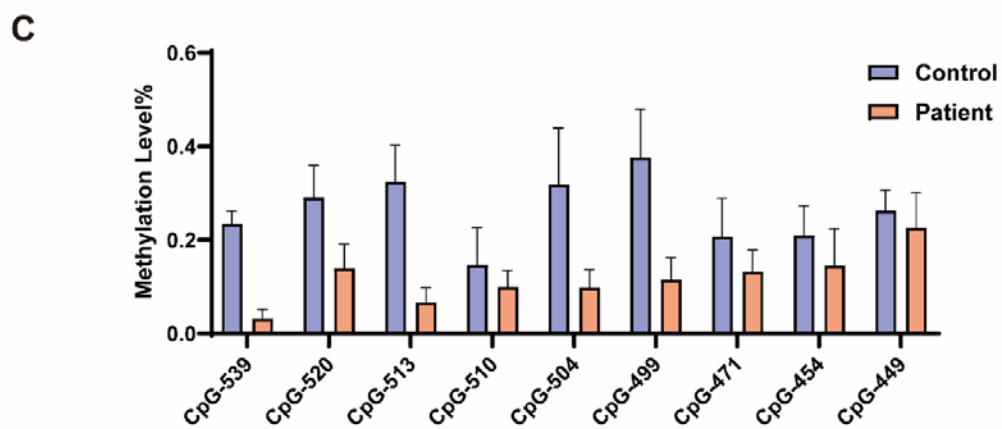
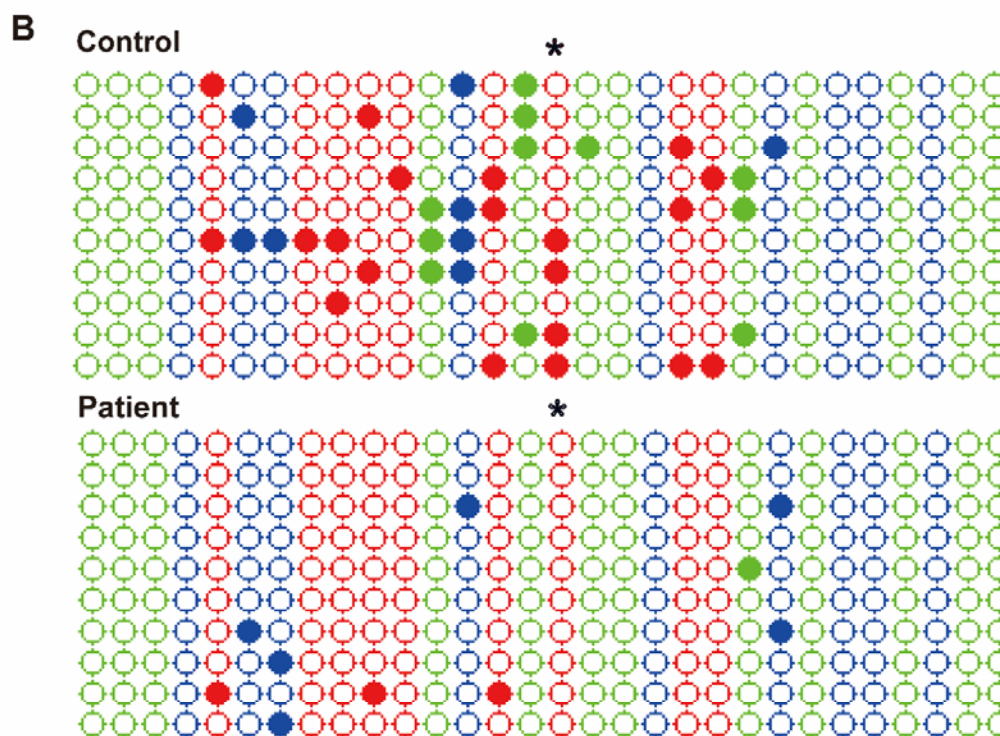
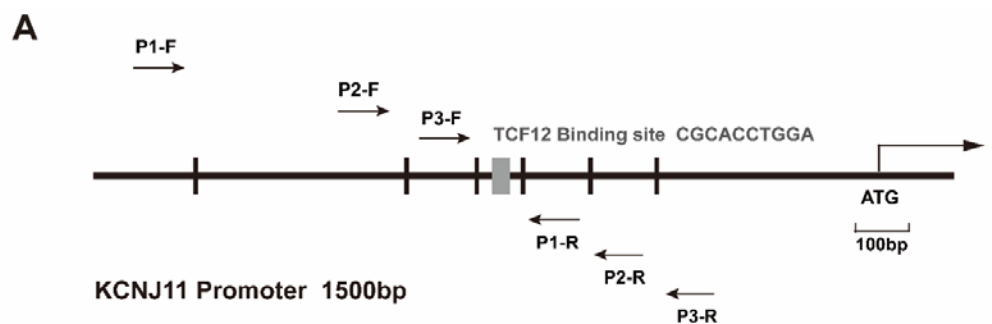
606

607

608

609

Gel electrophoresis of different diabetic samples and healthy subjects after 1h digestion by McrBC. The same amount of DNA from the same sample on the left side is the uncut control, and on the right side is the digestion for 1h (A); The below panel shows the bar graph of gray value analysis (B). Abbreviations: U – undigested; M – McrBC digested; P – patient; C – healthy control.



610

611

612

613 **FIG. 2.**

614 Schematic illustration of the amplification positions of each primer pair in  
615 the promoter region of KCNJ11 and the binding site of the TCF12  
616 transcription factor. P1 represents the MCrBC primer (668bp), P2  
617 represents the BSP primer (151bp), and P3 represents the CHIP primer  
618 (172bp)(A). Healthy control and T2DM genomic DNA were sequenced for  
619 different clones after treatment with sodium bisulfite, and scatters  
620 represent cytosines at the positions indicated in the KCNJ11 5' region, \*  
621 labeled at the CpG-471 site (B). Histogram of the methylation rate of the  
622 KCNJ11 promoter region in the first-episode T2DM group (red bars) and  
623 healthy control group (blue bars) (C). Abbreviations: P – primer; F –  
624 forward; R – reverse.

625

626

627

628

629

630

631

632

633

634

635

636

637

638

639

640

641

642

643

644

645

646

647

648

649

650

651

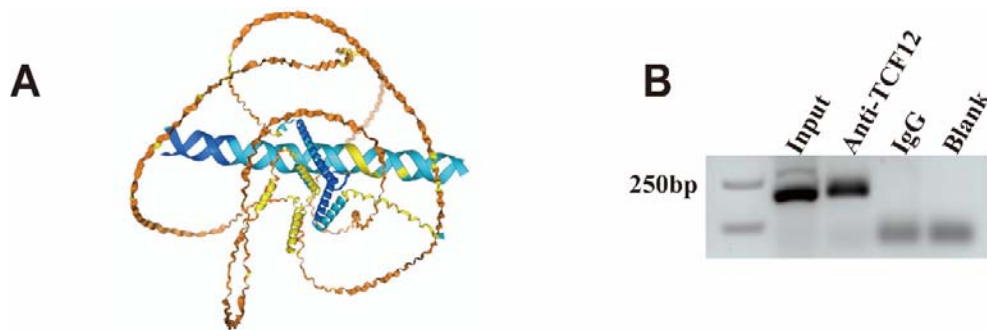
652

653

654

655

656



657

658

**FIG. 3.**

659

660

661

662

663

664

665

666

667

668

669

670

671

672

673

674

675

676

Structural pattern of the binding of the transcription factor TCF12 to the KCNJ11 promoter region demonstrated by AlphaFold software(A).The PCR products of the 293T cells from the ChIP assay were visualized on a UV transilluminator (B).



677

678

679

680

681

682

683

684

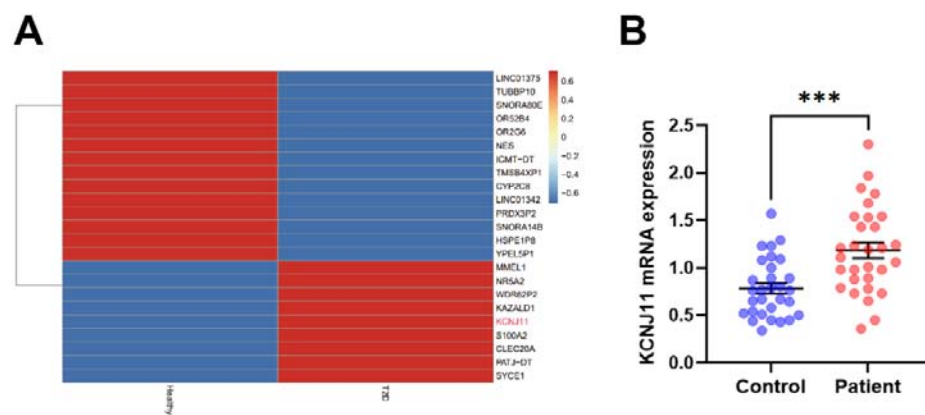
685

686

687

688

689



690

691

**FIG. 4.**

692

RNA-seq data shows that the KCNJ11 gene is upregulated in the type 2 diabetes group (logFC = 1.478151, p = 0.09869249, FDR = 0.3574878)

693

(A). KCNJ11 mRNA expression levels in human peripheral blood from

694

695 healthy controls and patients with T2DM. Gene expression was analyzed  
696 using quantitative RT-PCR. The results are expressed as the mean  $\pm$  SD  
697 (B).