

1 **Supplementary Figures and Table**

2 **Asymptomatic carriage of *Plasmodium falciparum* in children living in a hyperendemic area occurs**
3 **independently of IgG responses but is associated with a balanced inflammatory cytokine ratio.**

4 **AUTHORS AND AFFILIATIONS**

5 Balotin Fogang^{1,2}, Matthieu Schoenhals¹, Franklin M. Maloba¹, Marie Florence Biabi^{1,3}, Estelle
6 Essangui¹, Christiane Donkeu^{1,2}, Glwadys Cheteug^{1,4}, Marie Kapen¹, Rodrigue Keumoe¹,
7 Sylvie Kemleu¹, Sandrine Nsango^{1,5}, Douglas H. Cornwall⁶, Carole Eboumbou^{1,5}, Ronald
8 Perraut¹, Rosette Megnekou², Tracey J. Lamb*⁶, Lawrence S. Ayong*¹

9 **Affiliations:**

10 ¹ Molecular Parasitology Laboratory, Centre Pasteur du Cameroun, BP 1274 Yaounde,
11 Cameroon,

12 ² Department of Animal Biology and Physiology of the University of Yaoundé I, BP 812
13 Yaounde, Cameroon,

14 ³ Department of Biochemistry, University of Douala, BP 24157 Douala, Cameroon,

15 ⁴ Department of Medical Laboratory Sciences, University of Buea, BP 63 Buea, Cameroon

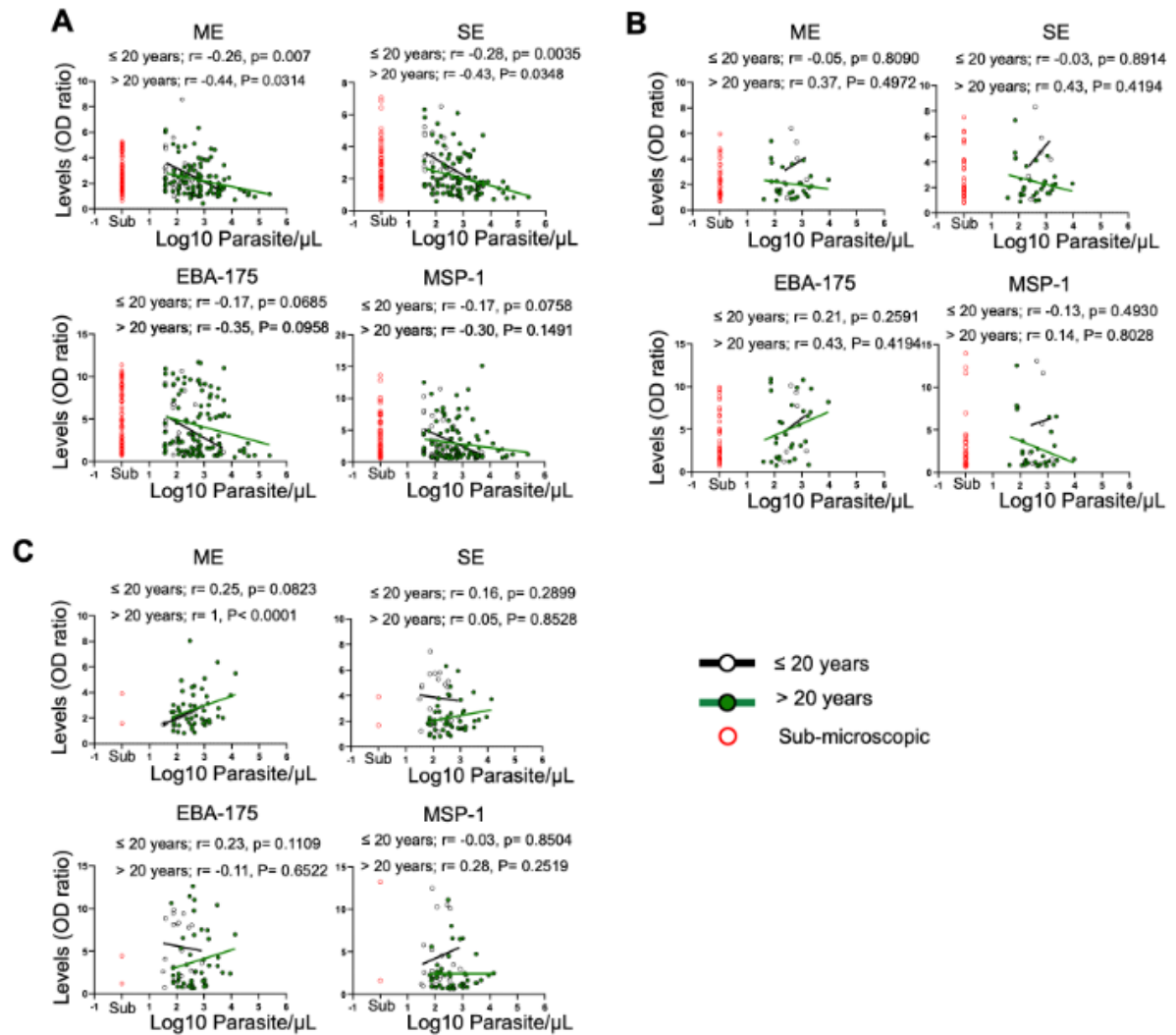
16 ⁵ Faculty of Medicine and Pharmaceutical Sciences, University of Douala, BP 2701 Douala,
17 Cameroon

18 ⁶ Department of Pathology, University of Utah, 15 N Medical Drive, Salt Lake City 84112,
19 USA.

20 * Co-corresponding authors

21 Correspondence to: Tracey Lamb tracey.lamb@path.utah.edu Tel: +1 801 213 2097

22



23

24

Supplementary Figure 1. Correlation between IgG anti-*Plasmodium* antibody levels and

25

parasite loads. Scatterplots show the correlation between baseline IgG anti-*P. falciparum*

26

antibody levels and parasitemia at the detection limit of microscopy in different age groups.

27

Spearman rank correlation is presented as the best fit line and the coefficient (r), as well as the

28

p -values (p), are shown for each age group. SE: Schizont extract. ME: Merozoite extract. EBA-

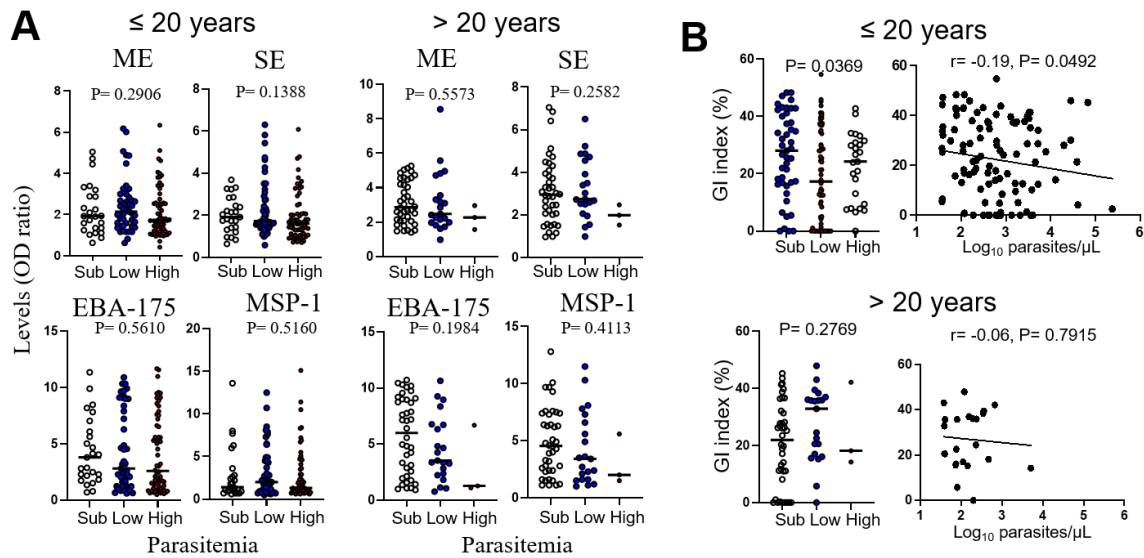
29

175: Erythrocyte binding antigen-175. MSP-1: Merozoite surface protein-1. OD: optical

30

density.

31



32

33 **Supplementary Figure 2. IgG anti-*Plasmodium* antibody levels (A) and anti-parasite**

34 **growth inhibition activities (B) at baseline divided according to parasitemia levels. A) Data**

35 presented in the scatterplots represent IgG antibody levels against different *P. falciparum*

36 antigens (ME, SE, EBA-175 and MSP-1) in parasitemic groups, according to age groups

37 collected at the baseline of the study. Median levels of parasitemia between the three groups

38 were compared by a Kruskal-Wallis test and the p-values are shown on the plot. None were

39 significant and therefore no two-way comparisons were performed. B) The scatterplots on the

40 left show *P. falciparum* growth inhibition activities of circulating plasma antibodies in

41 parasitemic groups. Median antibody GI index between parasitemia the three groups were

42 compared by Kruskal-Wallis test and the p-values are shown on the plot. The scatterplots on

43 the right show the correlation between *P. falciparum* growth inhibition activities of circulating

44 antibodies and parasitemia in different age groups. Spearman rank correlation is presented as

45 the best fit line and the coefficient (r), as well as the p-values (p), are shown for each age group.

46 Parasite densities were groups in three groups as follows, submicroscopic parasitemia, had low

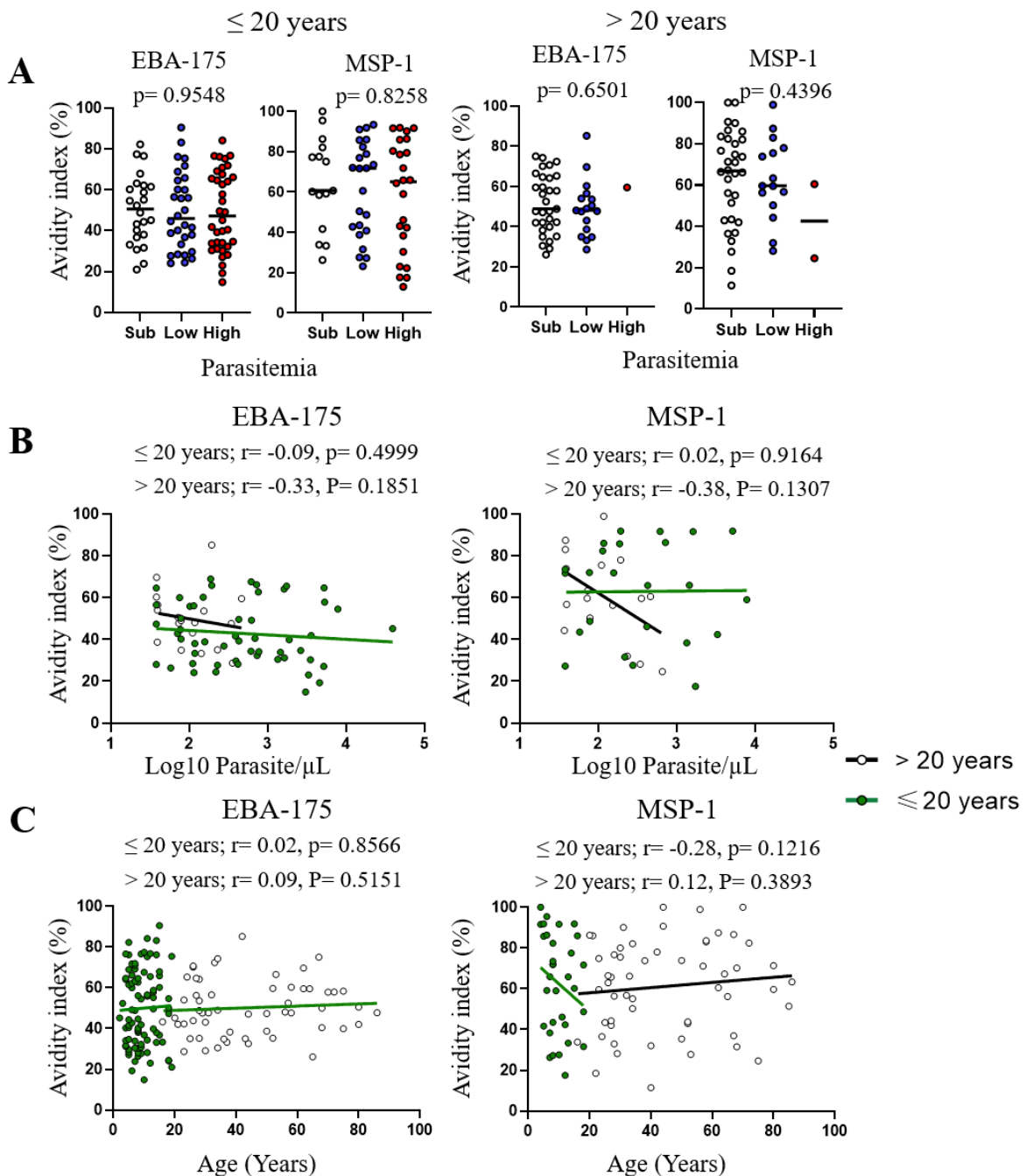
47 levels of microscopic parasitemia (parasitemia ≤ 413.1 parasites/ μ l, representing the median

48 parasitemia in the study population) and high levels of parasitemia (parasitemia > 413.1

49 parasites/ μ l). SE: Schizont extract. ME: Merozoite extract. EBA-175: Erythrocyte binding

50 antigen-175. MSP-1: Merozoite surface protein-1. GI: Growth inhibition. OD: optical density.

51 Sub: Submicroscopic. L



52

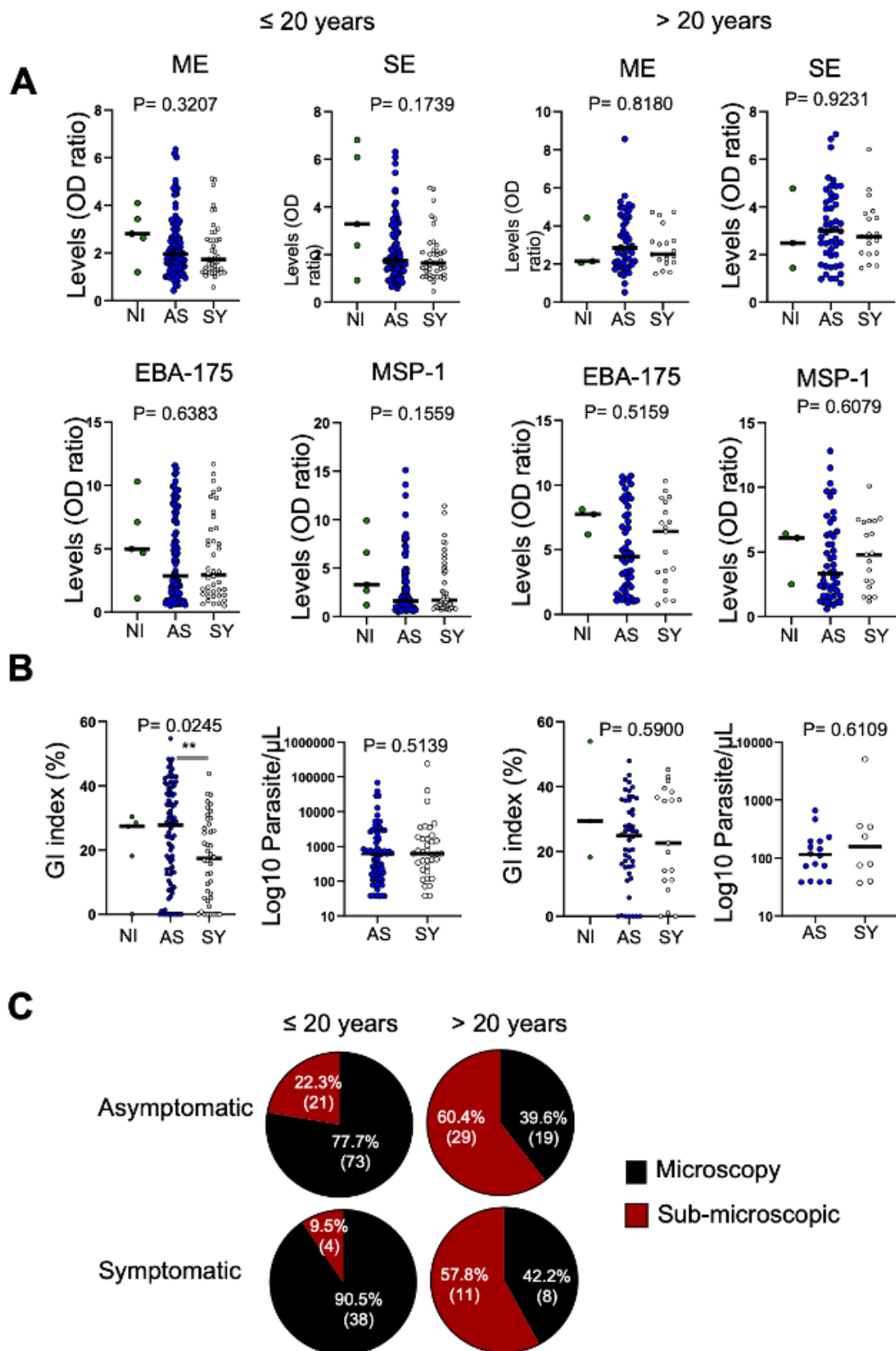
53 **Supplementary Figure 3. No association was found between IgG anti-*Plasmodium***

54 **antibody avidity and parasite densities.** A) Data presented in the scatterplots represent IgG

55 antibody avidity index against different *P. falciparum* antigens (EBA-175 and MSP-1) in

56 individuals with microscopic parasitemia at the baseline, according to age groups. Median

57 levels between parasitemia the three groups were compared by Kruskal-Wallis test and the p-
58 values are shown on the plot. In scatterplots show the correlation between IgG anti-
59 *Plasmodium* antibody avidity index and parasitemia. Parasite densities were groups in three
60 groups as follows, submicroscopic parasitemia, had low levels of microscopic parasitemia
61 (parasitemia \leq 413.1 parasites/ μ l, representing the median parasitemia in the study
62 population) and high levels of parasitemia (parasitemia $>$ 413.1 parasites/ μ l). Spearman rank
63 correlation is presented as the best fit line and the coefficient (r) and the p-values (p), are
64 shown for each age group. EBA-175: Erythrocyte binding antigen-175. MSP-1: Merozoite
65 surface protein-1.



66

67

68 **Supplementary Figure 4. No association was found between IgG anti-*Plasmodium***

69 **antibody levels and infection status. A) Data presented in the scatterplots represent baseline**

70 IgG antibody levels against different *P. falciparum* antigens (ME, SE, EBA-175 and MSP-1)
 71 by infection status, according to age group. B) scatterplots represent the parasite growth
 72 inhibition index of circulating antibody or microscopic parasite densities in the study population
 73 groups at the baseline. Median levels were compared using nonparametric Kruskal-Wallis test
 74 for multiple comparisons and Wilcoxon signed-rank test for comparison between two groups.
 75 In Panel A, pairwise comparisons were performed only when multiple comparisons were
 76 significant at $p < 0.05$. SE: Schizont extract. ME: Merozoite extract. EBA-175: Erythrocyte
 77 binding antigen-175. MSP-1: Merozoite surface protein-1. NI: Non-infected. AS:
 78 Asymptomatic. SY: Symptomatic. GI: Growth inhibition. OD: optical density. **** $p < 0.05$** .

79
 80
 81
 82
 83
 84
 85

86 **Supplementary Table 1. Multivariate logistic regression analysis of selected cytokines**

Cytokines	Coefficients	P value
IL-10	-1.19	0.1828
IL-1RA	2.18	0.0208
MCP-1	1.80	0.1026
IP-10	0.87	0.2558
IL-6	-0.35	0.5888
IL-10/TNF-α	2.28	0.0130

87 The data in this table represents the results of multivariate logistic regression analysis of
 88 selected cytokines with p -value < 0.1 when comparing individuals with asymptomatic
 89 *Plasmodium* infection to those with symptomatic infection.

90
 91