

1 Clinical Pilot of Bacterial Transcriptional Profiling as a Combined Genotypic and Phenotypic Antimicrobial
2 Susceptibility Test

3
4 Young EL^{1*}, Roach DJ^{1,2*}, Martinsen MA¹, McGrath GEG⁴, Holbrook NR⁴, Cho HE⁴, Seyoum EY^{1,5}, Pierce
5 VM^{4,6}, and Bhattacharyya RP^{1,3}

6 * Co-first

- 7 1. The Broad Institute of MIT and Harvard, Boston, MA, USA
- 8 2. Division of Infectious Diseases, Brigham and Women's Hospital, Boston, MA, USA
- 9 3. Division of Infectious Diseases, Massachusetts General Hospital, Boston, MA, USA
- 10 4. Department of Pathology, Massachusetts General Hospital, Boston, MA, USA
- 11 5. Department of Molecular and Cellular Biology, Harvard University, Cambridge, MA, USA
- 12 6. Current address: Department of Pathology, University of Michigan Medical School, Ann Arbor, MI, USA

14 **Corresponding Author**

15 Roby P. Bhattacharyya, MD, PhD
16 Division of Infectious Diseases
17 Massachusetts General Hospital
18 55 Fruit St
19 Boston MA 02114
20 rbhatt@broadinstitute.org

23 **Brief Summary:** Exposure to antibiotics causes differential transcriptional signatures in susceptible vs.
24 resistant bacteria. These differences can be leveraged to rapidly predict resistance profiles of *Escherichia coli*
25 and *Klebsiella pneumoniae* in clinical positive blood cultures.

27 **Running Title:** Transcriptional antimicrobial susceptibility testing pilot

30 **ABSTRACT**

31 Antimicrobial resistance is a growing health threat, but standard methods for determining antibiotic
32 susceptibility are slow and can delay optimal treatment, which is especially consequential in severe infections
33 such as bacteremia. Novel approaches for rapid susceptibility profiling have emerged that characterize either
34 bacterial response to antibiotics (phenotype) or detect specific resistance genes (genotype). GoPhAST-R is a
35 novel assay, performed directly on positive blood cultures, that integrates rapid transcriptional response
36 profiling with detection of key resistance gene transcripts, thereby providing simultaneous data on both
37 phenotype and genotype. Here, we performed the first clinical pilot of GoPhAST-R on 42 positive blood
38 cultures: 26 growing *Escherichia coli*, 15 growing *Klebsiella pneumoniae*, and 1 with both. An aliquot of each
39 positive blood culture was exposed to 9 different antibiotics, lysed, then underwent rapid transcriptional
40 profiling on the NanoString® platform; results were analyzed using an in-house susceptibility classification
41 algorithm. GoPhAST-R achieved 95% overall agreement with standard antimicrobial susceptibility testing
42 methods, with the highest agreement for beta-lactams (98%) and the lowest for fluoroquinolones (88%).
43 Epidemic resistance genes including the extended spectrum beta-lactamase *bla*_{CTX-M-15} and the
44 carbapenemase *bla*_{KPC} were also detected within the population. This study demonstrates the clinical feasibility
45 of using transcriptional response profiling for rapid resistance determination, although further validation with
46 larger and more diverse bacterial populations will be essential in future work. GoPhAST-R represents a
47 promising new approach for rapid and comprehensive antibiotic susceptibility testing in clinical settings.

48

49 **INTRODUCTION**

50 Infections due to antimicrobial resistant (AMR) bacteria are a major cause of global mortality, accounting for
51 1.27 million deaths in 2019 alone¹, and result in increased length of hospital stays², higher healthcare costs³,
52 and higher mortality². Delays in appropriate antimicrobial therapy, often due to bacterial resistance to empiric
53 antibiotic selection, directly correlate with increased in-hospital mortality^{4,5}. This can push clinicians toward
54 excessively broad spectrum therapies that may result in worse patient outcomes⁶ and the development of
55 resistance⁷, which underscores the broad potential benefits of rapid antimicrobial susceptibility testing
56 (AST)^{8,9,10}.

57

58 The gold standard for AST involves growing isolates in the presence of an antibiotic to determine the lowest
59 concentration that inhibits bacterial growth¹¹. While reliable, growth-based AST can be time-consuming, taking
60 up to 72 hours from the time of sample collection to the final susceptibility profile. A growing number of
61 alternative, rapid AST methods address this challenge in two broad ways: genotypic and phenotypic assays.
62 Genotypic approaches directly identify specific genes or mutations known to confer resistance. This approach
63 relies on detecting a limited subset of genes, however, and so is unable to detect novel or complex resistance
64 mechanisms, especially in gram-negative pathogens¹². Phenotypic assays, conversely, assess bacterial
65 response to antibiotics based on different cellular properties, such as growth¹³, metabolic activity¹⁴, or bacterial
66 motility^{15,16}. Although generally applicable across resistance mechanisms, this approach does not provide
67 information about bacterial genotypes, potentially omitting key data that could inform antibiotic selection¹⁷ and
68 epidemiologic inquiries^{18,19}.

69

70 In recent years, our group developed a method that combines both genotypic and phenotypic information into a
71 single, rapid AST assay termed Genotypic and Phenotypic AST through RNA detection (Go-PhAST-R)²⁰. Go-
72 PhAST-R uses NanoString® RNA hybridization chemistry²¹ to quantify multiple bacterial transcripts from crude
73 lysate samples and infer resistance patterns. To do so, it leverages the marked differences in gene expression
74 profiles of susceptible isolates compared to species-matched resistant isolates when exposed to antibiotics:
75 resistant isolates are relatively unperturbed, whereas susceptible isolates, physiologically distressed and dying

76 or growth-arrested, demonstrate large transcriptional changes in response to the antibiotic. We previously
77 showed that a small subset of genes undergo large, predictable expression changes upon exposure to a class
78 of antibiotics²², such that the change in expression of these marker genes reflects phenotypic antibiotic
79 susceptibility, independent of resistance mechanism. Using this principle, we designed and validated
80 GoPhAST-R probesets to classify susceptibility of *Escherichia coli* and *Klebsiella pneumoniae* to
81 aminoglycosides, fluoroquinolones, and beta-lactams²². Additionally, transcripts from high-risk resistance
82 genes, such as extended spectrum beta-lactamases (ESBLs) and carbapenemases, were simultaneously
83 interrogated to identify high-risk genotypes of epidemiologic relevance. In prior work done on blood cultures
84 spiked with laboratory strains with pre-specified resistance patterns, Go-PhAST-R achieved 94-99% accuracy,
85 required minimal technical expertise and hands-on time, and returned results as soon as <4 hours after a
86 positive blood culture²⁰.

87
88 In this work, we implement this assay in a clinical setting for the first time, testing 42 blood cultures that grew *E.*
89 *coli* or *K. pneumoniae* from the clinical microbiology laboratory at Massachusetts General Hospital (MGH).
90 Transcriptional responses to antibiotic exposure clustered by susceptibility classification (i.e., susceptible
91 strains and resistant strains exhibited distinct transcriptional responses), with 95% overall categorical
92 agreement to standard clinical testing. These results are the first demonstration in a clinical setting of an assay
93 based on the new paradigm of using bacterial transcriptional responses to predict antibiotic susceptibility.

94 **METHODS**

96 *Bacterial Collection and Routine Culture Methods*

97 A total of 66 unique positive blood cultures with gram-negative rods on Gram stain were collected; only one
98 sample per patient was included. At the time a blood culture bottle signaled positive on the BACTEC FX
99 system (Becton Dickinson, Sparks, MD), a 1mL aliquot was taken for processing as below. The remainder was
100 carried forward for routine clinical processing, including subculture to solid media followed by colony
101 identification via MALDI-TOF mass spectrometry (VITEK MS, version 3.2 in vitro diagnostic Knowledge Base,
102 bioMérieux, Durham, NC) and antimicrobial susceptibility testing (AST) using the VITEK 2 AST-GN81 Gram
103 Negative Susceptibility Card (bioMérieux), clinically validated for use with Clinical and Laboratory Standards

Institute (CLSI) breakpoints published in M100-Ed31²³. Aztreonam and cefazolin were tested by the CLSI disk diffusion method²⁴ due to limitations of the VITEK 2 AST card; aztreonam was not included on the card, and the lowest concentration of cefazolin did not permit susceptible and intermediate minimum inhibitory concentrations (MICs) to be distinguished. Cefazolin susceptibility was further tested by broth microdilution²⁵ in the research laboratory.

Antibiotic treatment

As in prior implementations of GoPhAST-R²⁰, a 1mL aliquot of each positive blood culture was first spun down at 100g for 10min to pellet red blood cells. The supernatant was then spun at 16,000g for 3min to pellet bacteria. The supernatant was removed, and the bacterial pellet resuspended in cation-adjusted Mueller-Hinton broth (CAMHB, ThermoFisher Scientific, Lenexa, KS) to a final volume of 500uL. Separate 45µl aliquots were added to pre-diluted 5 uL aliquots of cefazolin (CFZ), ceftriaxone (CRO), aztreonam (ATM), piperacillin-tazobactam (TZP), cefepime (FEP), ertapenem (ETP), meropenem (MEM), ciprofloxacin (CIP), levofloxacin (LVX), or gentamicin (GEN) to expose at CLSI breakpoint concentrations²³ (**Table S1**). Bacteria were exposed at 37° C to each non-beta-lactam antibiotic for 60min, or 120min for beta-lactams given the slower response for this class²². In prior work, we found that the beta-lactam inoculum effect²⁶ required exposure at standard CLSI-recommended inocula in order for the transcriptional response to reflect susceptibility²². Thus, beta-lactam treated samples and one untreated control were diluted 1:100 (targeting 5e5 cfu/mL) prior to incubation and plated at the time of antibiotic exposure to enumerate colony forming units to confirm. To assess baseline transcriptional signatures, two aliquots of each sample were each added to 5ul of CAMHB without antibiotics, and these untreated cultures were removed at either 60min (for comparison with aminoglycosides and fluoroquinolones) or 120min (for comparison with beta-lactams). Lysis buffer was added, and the samples were flash-frozen and stored at -80°C for subsequent batch processing.

Lysis and Hybridization

Samples for which routine clinical testing identified *E. coli* or *K. pneumoniae* were thawed and lysed on the MP FastPrep™ bead beater²². Crude lysates were carried forward on the NanoString® platform per manufacturer's protocols. RNA probe sets were designed as per prior work²⁰. Samples were hybridized for 1 hour as per our

132 prior protocol^{20,22}, except for those treated with beta-lactams, which were hybridized for 16 hours to ensure
133 sufficient signal from the lower initial inoculum.

135 Quantification of Transcriptional Response and Genotyping

136 Data were partitioned by each antibiotic and species combination. Raw transcript counts were first normalized
137 to NanoString® spike-in controls per manufacturer's protocol, and then to housekeeping genes selected to
138 have consistent expression to control for bacterial cellular density, as previously described²⁰. To assess
139 transcriptional response, we next calculated log₂ fold change in normalized transcript counts between treated
140 and untreated samples. To characterize resistance genotypes, probes were measured that targeted conserved
141 regions of the carbapenemase genes *bla*_{KPC}, *bla*_{NDM}, *bla*_{VIM}, *bla*_{IMP}, and *bla*_{OXA-48} and the extended spectrum
142 beta-lactamase gene *bla*_{CTX-M-15}²⁰. If any of these probes were detected above background, the gene was
143 considered present.

145 Model Construction and Resistance Prediction

146 To represent the entire transcriptional response profiles in a single quantitative metric, we used a method of
147 one-dimensional projection called squared projected distance (SPD)²⁷ to summarize each sample's
148 responsiveness in comparison to reference data from samples with known MICs. In brief, centroids
149 representing the average transcriptional response of known susceptible and resistant isolates are computed for
150 each antibiotic and species combination from highly susceptible and resistant strains from a reference set²².
151 Distance from the susceptible centroid is calculated for each new transcriptional profile and scaled by the
152 distance between the sensitive and resistant centroids; thus, an SPD of 0 represents a response similar to that
153 of the control set of susceptible strains, whereas an SPD of 1 represents a resistant-like response.

154
155 We used support vector machine (SVM) modeling for each species and drug class as a tool to report the
156 degree to which our susceptible and resistant isolates separate from each other by their SPD values. SVM is
157 an unbiased, algorithmic method of identifying natural separation in data that minimizes overfitting by
158 maximizing distance between boundaries and each class of data²⁸. We implemented SVM models using the
159 e1071 package²⁹ on a dataset that included both the current samples as well as a larger collection with a

160 higher proportion of resistant isolates from prior work²², using clinical susceptibility classifications as “ground
161 truth”. To minimize the most clinically important discrepant classifications, we set the model to penalize very
162 major discrepancies (VMDs) (R strain misclassified as S) twice as much as major discrepancies (S strain
163 misclassified as R). For the genotypic portion of the assay, we incorporated whether resistance gene of a given
164 class were detected, and if so, we considered the isolate to be resistant to the relevant antibiotic regardless of
165 the SVM prediction (**Supplemental Fig. S1**). While the assay was run for cefazolin, the results were excluded
166 from the final SVM model because (a) the CLSI breakpoint concentration falls within the MIC distribution of
167 wild-type strains³⁰, which in practice leads to classification challenges, exemplified in our collection by frequent
168 discordance between susceptible and intermediate classifications for samples tested by disk diffusion and
169 broth microdilution methods (**Supplemental Fig. S2**); and (b) cefazolin is not a recommended first-line therapy
170 for gram-negative bacteremia, which was the focus of this study.

172 **RESULTS**

173 Bacterial collection and clinical AST determination

174 A total of 66 positive blood cultures with gram-negative rods on Gram stain were exposed in real-time in the
175 clinical microbiology laboratory to the selected antimicrobials (Supplemental Table S1; see Methods). Of these
176 66 cultures, 26 were subsequently identified as *E. coli* and 15 as *K. pneumoniae*, for which we had previously
177 designed probes for transcriptional susceptibility testing to beta-lactams, fluoroquinolones, and
178 aminoglycosides²². In one case (sample 17), a blood culture was identified as having both species and was
179 carried forward. The other 24 samples included species for which we do not have transcriptional probes and
180 thus were not processed further. Routine clinical testing of these isolates found relatively low levels of
181 resistance, with the highest rate of non-susceptibility found for ciprofloxacin at 26% (7/27) in *E. coli* and 19%
182 (3/16) in *K. pneumoniae*, and the lowest rate seen for the carbapenems at 0% (0/27) and 6.3% (1/16)
183 respectively (**Table 1**). While intermediate MICs were rare in the collection, we found 4 instances of
184 intermediate MICs to levofloxacin in *E. coli* and 2 in *K. pneumoniae*.

186 Transcriptional Response to Drug Treatment and Resistance Genotyping

187 To assess susceptibility from transcriptional profile, we measured levels of 10-13 transcripts per each drug
188 class and calculated change in normalized expression between treated and untreated states²⁰ (**Figure 1A**).
189 While strain variation is present across drug treatments, *E. coli* and *K. pneumoniae* samples predominantly
190 demonstrated one of two transcriptional profiles: susceptible isolates exhibited large perturbations in
191 transcriptional responses upon antibiotic exposure, whereas resistant isolates demonstrated very little to no
192 perturbation. When grouped by drug and species, transcripts from susceptible isolates were perturbed by an
193 absolute log₂-fold value of 1.0 to 4.0 averaged across all responsive genes, with most drug-species pairs
194 falling between 1.5 and 3.0; while for resistant samples these values ranged from 0.2 to 1.8, with all but one
195 falling below 0.9 (a carbapenem-resistant *K. pneumoniae*, see below) (**Figure 1B**). While uncommon, samples
196 with intermediate MICs showed a wider average perturbation range of between 0.2 and 3.8 absolute log₂-fold
197 change.

198
199 After condensing probe responses into squared projected distance (SPD)²⁷ (**Figure 2A and 2B, Supplemental**
200 **Fig. S3**), a metric we previously devised to represent transcriptional response to antibiotic (see Methods),
201 samples categorized as susceptible by clinical AST had a mean SPD value of 0.027 (median 0.0, interquartile
202 range [IQR] ±0.09), while resistant samples had a mean SPD of 0.975 (median 1.0, IQR ±0.31). Samples with
203 intermediate susceptibilities had a mean of 0.23 (median 0.1, IQR ±0.184) (**Figure 2C**).

204
205 In total, our genotypic probes detected *bla*_{CTX-M-15} in 2 *E. coli* isolates and 3 *K. pneumoniae* isolates, and a
206 single carbapenemase gene, a *bla*_{KPC} found in sample 48, a *K. pneumoniae* that displayed a transcriptional
207 response to both ertapenem and meropenem despite harboring this resistance gene (**Supplementary Fig S4**).

209 Susceptibility Predictions

210 We used a support vector machine (SVM) model to find the natural separation in the SPD values that best
211 delineated susceptible and non-susceptible isolates (per clinical AST) and incorporated this into an algorithm
212 for resistance classification (see Methods and **Supplementary Fig. S1**). We had an overall categorical
213 agreement of 95% (368/387 pairwise drug comparisons) with standard susceptibility profiling (**Figure 3**). In
214 total, there was a 5% very major discrepancy (VMD) rate (2/42 resistant isolates), a 2% major discrepancy

(MD) rate (7/334 susceptible), and a 3% minor discrepancy rate (**Supplementary Table S2**). The best-performing grouping was the beta-lactam class in *E. coli*, with 99% overall categorical agreement and zero VMDs. The worst performing combination was in the fluoroquinolone class, with categorical agreement rates of 89% for *E. coli* and 88% for *K. pneumoniae* (**Supplementary Table S2**), and VMDs of 8% and 20%, respectively, representing one VMD in each species, with 12/13 correct resistance predictions for *E. coli* and 4/5 correct predictions for *K. pneumoniae*. Both misclassifications were in ciprofloxacin for isolates with VITEK 2 MICs at the resistant clinical breakpoint (**Figure S3**).

Unexpectedly, we obtained one mixed culture of *E. coli* and *K. pneumoniae* during our collection (sample 17). Since each NanoString probe is species-specific in its reactivity pattern, we reasoned that we might see species-specific transcriptional responses for each species without subculture, so we carried the sample through gene expression profiling and analysis, using both *E. coli* and *K. pneumoniae* probesets for this sample (**Figure S3**, samples 17ec and 17kp). 18 of 20 SPD-based predictions for these two strains were in categorical agreement with clinical AST testing, with discrepancies only in fluoroquinolone susceptibility of the *E. coli* strain (one major discrepancy and one minor discrepancy for ciprofloxacin and levofloxacin, respectively; **Supplementary Table S3**). When this isolate was regrown and tested in laboratory monoculture, it demonstrated the expected susceptible transcription profile, with its SPD dropping from 0.93 to 0.15 (**Figure S5**). The *K. pneumoniae* in the mixed culture, by contrast, had perfect agreement with clinical AST results performed on the subcultured isolate (**Supplementary Table S3**).

DISCUSSION

Here, we present the first pilot implementation of a transcription-based AST assay performed directly on positive blood cultures from clinical samples. This novel approach utilizes a single platform to concurrently assess bacterial phenotypic response to antimicrobials and identify high-risk AMR resistance genes in an integrated assay, culminating in a susceptibility prediction. The assay demonstrated strong overall concordance with routine AST methods, with some variation observed across antibiotic classes. Notably, beta-lactam antibiotics achieved 98% categorical agreement with standard clinical testing for six commonly used beta-lactams across both species and had no very major discrepancies (VMDs). Gentamicin also exhibited no

243 VMDs in either species. However, two *E. coli* isolates classified as susceptible by standard testing were
244 misclassified as resistant by the assay (major discrepancies) and one intermediate *K. pneumoniae* isolate was
245 misclassified as resistant (minor discrepancy). Fluoroquinolones displayed the least favorable performance,
246 with VMD rates of 8% (1/13) and 20% (1/5) in *E. coli* and *K. pneumoniae*, respectively, which represented the
247 only VMDs across our entire sample set.

248
249 We examined each case in which the transcriptional response differed from expectation based on routine
250 clinical susceptibility classification. In total, we observed four instances of resistant samples transcriptionally
251 responding to treatment, which generally occurred in samples with MICs near the breakpoints (**Supplemental**
252 **Fig. S3**). However, in two of these instances, the correct susceptibility prediction was made through genotypic
253 detection. In these strain and antibiotic pairings, the *K. pneumoniae* isolate expressing *bla*_{KPC} (#48) showed
254 considerable perturbations in the presence of both meropenem and ertapenem. While detecting *bla*_{KPC} is
255 sufficient to eliminate carbapenem drugs as treatment options³¹, it has been noted previously that *bla*_{KPC}-
256 producing strains may display low MICs to carbapenems³², especially at low inocula²⁶. In a different case, one
257 blood culture (#17) was polymicrobial, growing both *E. coli* and *K. pneumoniae*. While the *K. pneumoniae*
258 behaved as expected, the *E. coli* was susceptible to ciprofloxacin by MIC testing but did not demonstrate a
259 strong transcriptional response, leading to a miscall as a resistant isolate by our model. The transcriptional
260 response of this sample, however, looks qualitatively different than the “true” resistant profiles (**Supplemental**
261 **Fig. S3**, ciprofloxacin panel, sample 17ec). On examination of the raw data from this sample, sample 17ec had
262 low total transcript counts, likely introducing noise into the transcriptional signature, perhaps because *E. coli*
263 was present at lower abundance than usual when the bottle signaled positive. As we have not previously
264 included polymicrobial samples in the assay, further dedicated exploration will be needed to determine the
265 optimal method for handling such samples. However, the ability in principle to simultaneously profile responses
266 to multiple strains is a potentially appealing feature of this assay, as we observed 90% categorical agreement
267 with standard AST testing across 20 phenotypic tests for these two isolates. The majority of the remaining
268 errors were minor discrepancies in samples with MICs near CLSI breakpoints (**Fig S3**), which are inherently
269 challenging classifications even in gold-standard AST methods^{33,34}.

271 Our assay also captured genotypic information regarding the presence of key beta-lactamases, adding several
272 useful features beyond phenotypic testing alone. First, as outbreaks of carbapenem-resistant bacteria may be
273 caused by the spread of epidemic beta-lactamases¹⁸, knowledge about their presence has implications for
274 infection control practices³⁵. Second, a growing number of clinical decisions are determined by bacterial
275 genotype. Current IDSA guidelines, for example, recommend carbapenems as first-line therapy for complicated
276 infections caused by ESBL-producing organisms¹⁷. Finally, the emergence of novel beta-lactamase inhibitors
277 with specificities for different carbapenemases underscores a role for gene identification to guide optimal
278 antibiotic selection. Ceftazidime-avibactam, for instance, is effective against *bla*_{KPC} and *bla*_{OXA-48}
279 carbapenemase-producing isolates but has no activity against metallo-beta-lactamases such as *bla*_{NDM}³⁶. As
280 additional inhibitors to specific beta-lactamases are developed, the utility of defining genotype and phenotype
281 together will likely grow in importance.

282
283 One limitation of our study is the low rates of bloodstream infections from resistant organisms within the cohort,
284 resulting in a low number available for testing. However, we previously validated the assay on spike-in samples
285 overrepresented for resistant isolates^{20,22}. Second, the greatest discordance compared to standard testing
286 occurred in those samples with MIC values near the clinical breakpoints, especially in the fluoroquinolone
287 class. The inclusion of additional samples near breakpoints will be key to improving performance for this
288 subset of isolates. Third, as CLSI clinical breakpoints evolve, the models would need to be retrained on
289 updated guidelines to maintain the greatest accuracy. Fourth, our comparator method was not the reference
290 standard of broth microdilution, but rather VITEK 2 (and disk diffusion in select cases), due to pragmatic
291 considerations; however, this comparator reflects standard practices in many clinical microbiology laboratories,
292 including our own. Most importantly, in this study we used SVM modeling to separate SPD values, and in order
293 to have a sufficient number of resistant samples for model training, we combined data from prior work²² with
294 the current population. This approach was necessary due to the low total numbers of resistant organisms, but
295 as a result we do not have a fully independent validation set. We previously used a more sophisticated strategy
296 using machine learning to train random forest models on the responses of each individual probe to create a
297 robust classifier for meropenem, ciprofloxacin, and gentamicin susceptibility²⁰. However, this approach requires
298 larger training datasets, including a sizeable number of resistant isolates, to rigorously train and independently
299 validate in a multistep process. Because each individual antibiotic within a class elicits a distinct magnitude of

300 transcriptional response in each species (**Supplemental Fig. S2**), we could not use this original model without
301 testing and retraining on hundreds of isolates, which was outside the scope of the current study. This additional
302 training will be critical prior to clinical implementation and should improve classification accuracy. Finally, due to
303 limited sensitivity of the stock NanoString nCounter Sprint detector system in our laboratory, we required a 16-
304 hour hybridization time to detect signal from the lower inoculum samples used for beta-lactam testing. Pilot
305 instruments under development offer improved RNA detection sensitivity with much shorter hybridization
306 times²⁰, which would bring beta-lactam testing times in line with other antibiotics.

307
308 In summary, in this study we perform the first clinical pilot using a diagnostic testing approach that
309 simultaneously and rapidly detects bacterial phenotypic response to antibiotic exposure as well as epidemic
310 AMR gene content. The synthesis of these complementary paradigms represents a promising step toward the
311 next generation of clinical antimicrobial susceptibility testing. While further studies utilizing larger cohorts are
312 necessary to refine the predictive algorithm and enhance its robustness, and automation of the process would
313 be required before clinical utilization, this work establishes a framework for the continued development and
314 ultimate clinical implementation of this novel transcriptional assay.

315

316 **Acknowledgements**

317 We thank the Massachusetts General Hospital Clinical Microbiology Laboratory for assistance with sample
318 collection.

320 **Notes**

321 **IRB approval**

322 Clinical blood culture aliquots were collected under Mass General Brigham Institutional Review Board protocol
323 2015P002215.

325 **Financial support.**

326 This work was supported by the Massachusetts General Hospital Pilot Translational Research Grant (to RPB
327 and VMP), the Broad Institute NextGen Award (to RPB), the National Institutes of Health (1R01AI153405, to
328 RPB), and the John G. Bartlett Fellowship of the Antibiotic Resistance Leadership Group (T32AI007061-44, to
329 DJR). The funders had no role in study design, data collection and interpretation, or the decision to submit the
330 work for publication. The content is solely the responsibility of the authors and does not necessarily represent
331 the official views of the National Institutes of Health.

333 **Conflicts of Interest.**

334 The authors declare no conflicts of interest.

336 **Data sharing.**

337 All data generated and the code used for analysis are available on GitHub at
338 https://github.com/broadinstitute/Go-PhAST-R_Clinical_Pilot/
339

340 **References:**

- 341 1. Murray CJ, Ikuta KS, Sharara F, et al. Global burden of bacterial antimicrobial resistance in 2019: a
342 systematic analysis. *The Lancet*. 2022;399(10325):629-655. doi:10.1016/S0140-6736(21)02724-0
- 343 2. Falcone M, Tiseo G, Carbonara S, et al. Mortality Attributable to Bloodstream Infections Caused by
344 Different Carbapenem-Resistant Gram-Negative Bacilli: Results From a Nationwide Study in Italy
345 (ALARICO Network). *Clin Infect Dis*. 2023;76(12):2059-2069. doi:10.1093/cid/ciad100
- 346 3. Poudel AN, Zhu S, Cooper N, et al. The economic burden of antibiotic resistance: A systematic review and
347 meta-analysis. *PLOS ONE*. 2023;18(5):e0285170. doi:10.1371/journal.pone.0285170
- 348 4. Roach DJ, Sridhar S, Oliver E, et al. Clinical and Genomic Characterization of a Cohort of Patients With
349 *Klebsiella pneumoniae* Bloodstream Infection. *Clin Infect Dis*. Published online August 26, 2023:ciad507.
350 doi:10.1093/cid/ciad507
- 351 5. Falcone M, Bassetti M, Tiseo G, et al. Time to appropriate antibiotic therapy is a predictor of outcome in
352 patients with bloodstream infection caused by KPC-producing *Klebsiella pneumoniae*. *Crit Care*.
353 2020;24:29. doi:10.1186/s13054-020-2742-9
- 354 6. Webb BJ, Sorensen J, Jephson A, Mecham I, Dean NC. Broad-spectrum antibiotic use and poor outcomes
355 in community-onset pneumonia: a cohort study. *Eur Respir J*. 2019;54(1). doi:10.1183/13993003.00057-
356 2019
- 357 7. Shepherd MJ, Fu T, Harrington NE, et al. Ecological and evolutionary mechanisms driving within-patient
358 emergence of antimicrobial resistance. *Nat Rev Microbiol*. Published online April 30, 2024:1-16.
359 doi:10.1038/s41579-024-01041-1
- 360 8. Peri AM, Chatfield MD, Ling W, Furuya-Kanamori L, Harris PNA, Paterson DL. Rapid diagnostic tests and
361 antimicrobial stewardship programs for the management of bloodstream infection: What is their relative
362 contribution to improving clinical outcomes? A systematic review and network meta-analysis. *Clin Infect*
363 *Dis*. Published online April 27, 2024:ciae234. doi:10.1093/cid/ciae234
- 364 9. Timbrook TT, Morton JB, McConeghy KW, Caffrey AR, Mylonakis E, LaPlante KL. The Effect of
365 Molecular Rapid Diagnostic Testing on Clinical Outcomes in Bloodstream Infections: A Systematic Review
366 and Meta-analysis. *Clin Infect Dis*. 2017;64(1):15-23. doi:10.1093/cid/ciw649
- 367 10. Satlin MJ, Chen L, Gomez-Simmonds A, et al. Impact of a Rapid Molecular Test for *Klebsiella pneumoniae*
368 Carbapenemase and Ceftazidime-Avibactam Use on Outcomes After Bacteremia Caused by Carbapenem-
369 Resistant Enterobacterales. *Clin Infect Dis*. 2022;75(12):2066-2075. doi:10.1093/cid/ciac354
- 370 11. Gajic I, Kabic J, Kekic D, et al. Antimicrobial Susceptibility Testing: A Comprehensive Review of
371 Currently Used Methods. *Antibiotics*. 2022;11(4):427. doi:10.3390/antibiotics11040427
- 372 12. Yee R, Dien Bard J, Simner PJ. The Genotype-to-Phenotype Dilemma: How Should Laboratories Approach
373 Discordant Susceptibility Results? *J Clin Microbiol*. 59(6):e00138-20. doi:10.1128/JCM.00138-20
- 374 13. Zalas-Więcek P, Bogiel T, Gospodarek-Komkowska E. The Accelerate Pheno™ System—A New Tool in
375 Microbiological Diagnostics of Bloodstream Infections: A Pilot Study from Poland. *Pathogens*.
376 2022;11(12):1415. doi:10.3390/pathogens11121415
- 377 14. Chen C, Hong W. Recent Development of Rapid Antimicrobial Susceptibility Testing Methods through
378 Metabolic Profiling of Bacteria. *Antibiotics*. 2021;10(3):311. doi:10.3390/antibiotics10030311

- 379 15. Truong TT, Mongkolrattanothai K, Flores II, Dien Bard J. Evaluation of the Performance and Clinical
380 Impact of a Rapid Phenotypic Susceptibility Testing Method Directly from Positive Blood Culture at a
381 Pediatric Hospital. *J Clin Microbiol*. 2022;60(8):e00122-22. doi:10.1128/jcm.00122-22
- 382 16. Kasas S, Malovichko A, Villalba MI, Vela ME, Yantorno O, Willaert RG. Nanomotion Detection-Based
383 Rapid Antibiotic Susceptibility Testing. *Antibiotics*. 2021;10(3):287. doi:10.3390/antibiotics10030287
- 384 17. Tamma PD, Aitken SL, Bonomo RA, Mathers AJ, van Duin D, Clancy CJ. Infectious Diseases Society of
385 America 2022 Guidance on the Treatment of Extended-Spectrum β -lactamase Producing Enterobacterales
386 (ESBL-E), Carbapenem-Resistant Enterobacterales (CRE), and *Pseudomonas aeruginosa* with Difficult-to-
387 Treat Resistance (DTR-P. *aeruginosa*). *Clin Infect Dis Off Publ Infect Dis Soc Am*. 2022;75(2):187-212.
388 doi:10.1093/cid/ciac268
- 389 18. Patel B, Hopkins KL, Freeman R, Pople D, Brown CS, Robotham JV. Carbapenemase-producing
390 Enterobacterales: a challenge for healthcare now and for the next decade. *Infect Prev Pract*.
391 2020;2(3):100089. doi:10.1016/j.infpip.2020.100089
- 392 19. Yamagishi T, Matsui M, Sekizuka T, et al. A prolonged multispecies outbreak of IMP-6 carbapenemase-
393 producing Enterobacterales due to horizontal transmission of the IncN plasmid. *Sci Rep*. 2020;10(1):4139.
394 doi:10.1038/s41598-020-60659-2
- 395 20. Bhattacharyya RP, Bandyopadhyay N, Ma P, et al. Simultaneous detection of genotype and phenotype
396 enables rapid and accurate antibiotic susceptibility determination. *Nat Med*. 2019;25(12):1858-1864.
397 doi:10.1038/s41591-019-0650-9
- 398 21. Geiss GK, Bumgarner RE, Birditt B, et al. Direct multiplexed measurement of gene expression with color-
399 coded probe pairs. *Nat Biotechnol*. 2008;26(3):317-325. doi:10.1038/nbt1385
- 400 22. Martinsen MA, Jaramillo Cartagena A, Bhattacharyya RP. Core Antibiotic-Induced Transcriptional
401 Signatures Reflect Susceptibility to All Members of an Antibiotic Class. *Antimicrob Agents Chemother*.
402 2021;65(6):10.1128/aac.02296-20. doi:10.1128/aac.02296-20
- 403 23. Clinical and Laboratory Standards Institute. CLSI. Performance Standards for Antimicrobial Susceptibility
404 Testing. 31st ed. CLSI supplement M100. Published online 2021.
- 405 24. Clinical and Laboratory Standards Institute. CLSI. Performance Standards for Antimicrobial Disk
406 Susceptibility Tests. 13th ed. CLSI standard M02. Wayne, PA: Published online 2018.
- 407 25. Wiegand I, Hilpert K, Hancock REW. Agar and broth dilution methods to determine the minimal inhibitory
408 concentration (MIC) of antimicrobial substances. *Nat Protoc*. 2008;3(2):163-175.
409 doi:10.1038/nprot.2007.521
- 410 26. Cartagena AJ, Taylor KL, Smith JT, et al. The carbapenem inoculum effect provides insight into the
411 molecular mechanisms underlying carbapenem resistance in Enterobacterales. Published online October 4,
412 2023:2023.05.23.541813. doi:10.1101/2023.05.23.541813
- 413 27. Barczak AK, Gomez JE, Kaufmann BB, et al. RNA signatures allow rapid identification of pathogens and
414 antibiotic susceptibilities. *Proc Natl Acad Sci*. 2012;109(16):6217-6222. doi:10.1073/pnas.1119540109
- 415 28. Cortes C, Vapnik V. Support-vector networks. *Mach Learn*. 1995;20(3):273-297. doi:10.1007/BF00994018
- 416 29. Meyer [aut D, cre, Dimitriadou E, et al. e1071: Misc Functions of the Department of Statistics, Probability
417 Theory Group (Formerly: E1071), TU Wien. Published online December 6, 2023. Accessed April 18, 2024.
418 <https://cran.r-project.org/web/packages/e1071/index.html>

- 419 30. Turnidge JD, on behalf of the Subcommittee on Antimicrobial Susceptibility Testing of the Clinical and
420 Laboratory Standards Institute. Cefazolin and Enterobacteriaceae: Rationale for Revised Susceptibility
421 Testing Breakpoints. *Clin Infect Dis*. 2011;52(7):917-924. doi:10.1093/cid/cir031
- 422 31. Cui X, Zhang H, Du H. Carbapenemases in Enterobacteriaceae: Detection and Antimicrobial Therapy.
423 *Front Microbiol*. 2019;10. doi:10.3389/fmicb.2019.01823
- 424 32. Gagetti P, Pasteran F, Martinez MP, et al. Modeling Meropenem Treatment, Alone and in Combination
425 with Daptomycin, for KPC-Producing *Klebsiella pneumoniae* Strains with Unusually Low Carbapenem
426 MICs. *Antimicrob Agents Chemother*. 2016;60(8):5047-5050. doi:10.1128/AAC.00168-16
- 427 33. Mouton JW, Meletiadiis J, Voss A, Turnidge J. Variation of MIC measurements: the contribution of strain
428 and laboratory variability to measurement precision. *J Antimicrob Chemother*. 2018;73(9):2374-2379.
429 doi:10.1093/jac/dky232
- 430 34. Simner PJ, Rauch CA, Martin IW, et al. Raising the Bar: Improving Antimicrobial Resistance Detection by
431 Clinical Laboratories by Ensuring Use of Current Breakpoints. *Open Forum Infect Dis*. 2022;9(3):ofac007.
432 doi:10.1093/ofid/ofac007
- 433 35. Palmore TN, Henderson DK. Managing Transmission of Carbapenem-Resistant Enterobacteriaceae in
434 Healthcare Settings: A View From the Trenches. *Clin Infect Dis Off Publ Infect Dis Soc Am*.
435 2013;57(11):1593-1599. doi:10.1093/cid/cit531
- 436 36. Kazmierczak KM, Bradford PA, Stone GG, de Jonge BLM, Sahm DF. In Vitro Activity of Ceftazidime-
437 Avibactam and Aztreonam-Avibactam against OXA-48-Carrying Enterobacteriaceae Isolated as Part of the
438 International Network for Optimal Resistance Monitoring (INFORM) Global Surveillance Program from
439 2012 to 2015. *Antimicrob Agents Chemother*. 2018;62(12):10.1128/aac.00592-18. doi:10.1128/aac.00592-
440 18

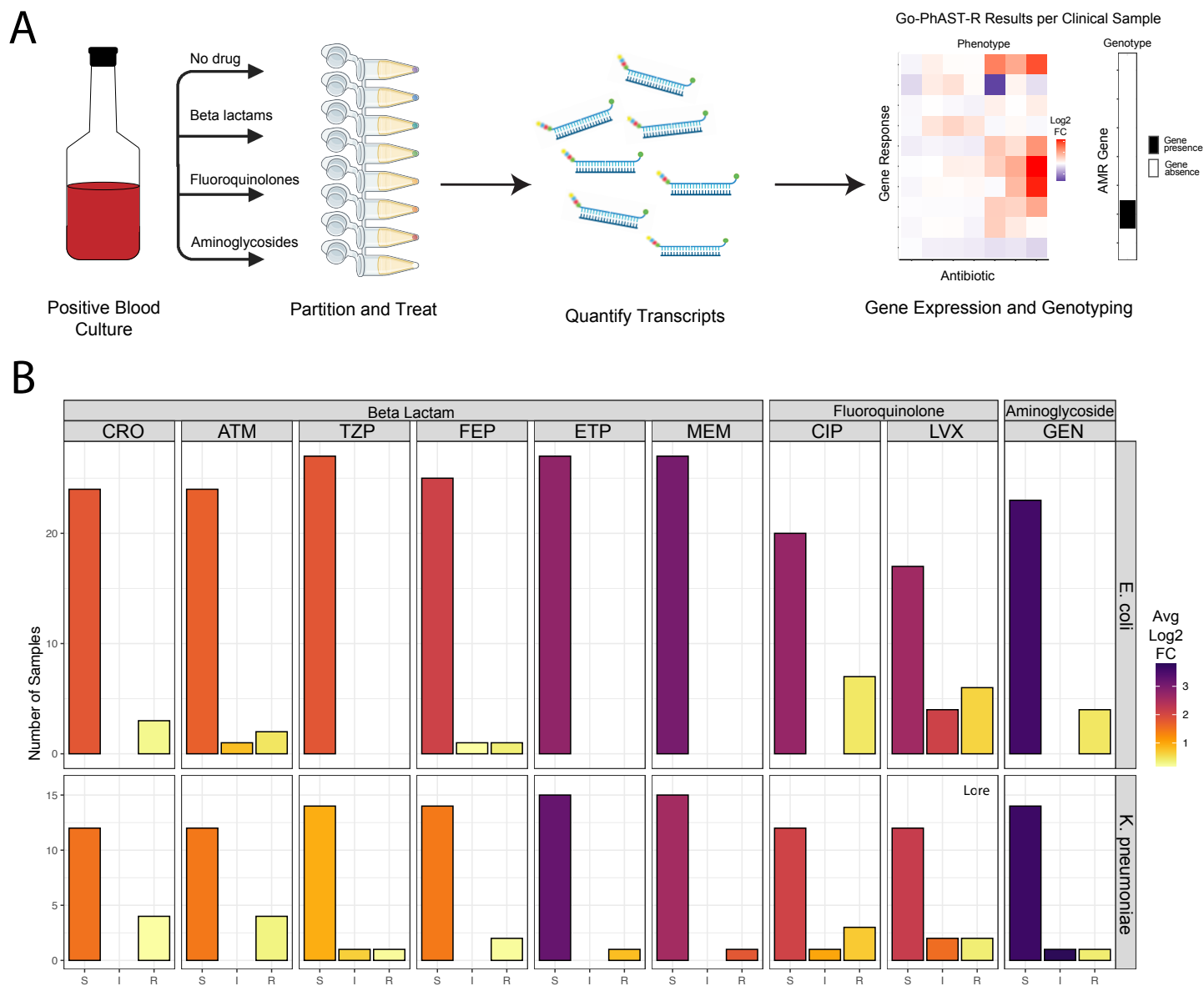


Figure 1. Assay Workflow and Summary of Transcriptional Profiles in Study Population. Transcriptional response to antibiotic exposure differs by susceptibility classification. (A.) Schematic workflow for an individual sample. (B) Clinical isolates show predictable transcriptional response to antibiotic treatment based on susceptibility profile. Absolute value of log₂ fold-change of all transcript counts of genes targeted by the probeset upon antibiotic exposure averaged across isolates, subset by antibiotic and grouped according to clinical resistance profile (susceptible, intermediate, and resistant) and species (*E. coli* and *K. pneumoniae*). Antibiotics are abbreviated as per Table 1 and grouped by class. The color of each bar represents the average log₂ fold change in transcript counts, while the height of each bar corresponds to the number of samples with that susceptibility profile for each antibiotic.

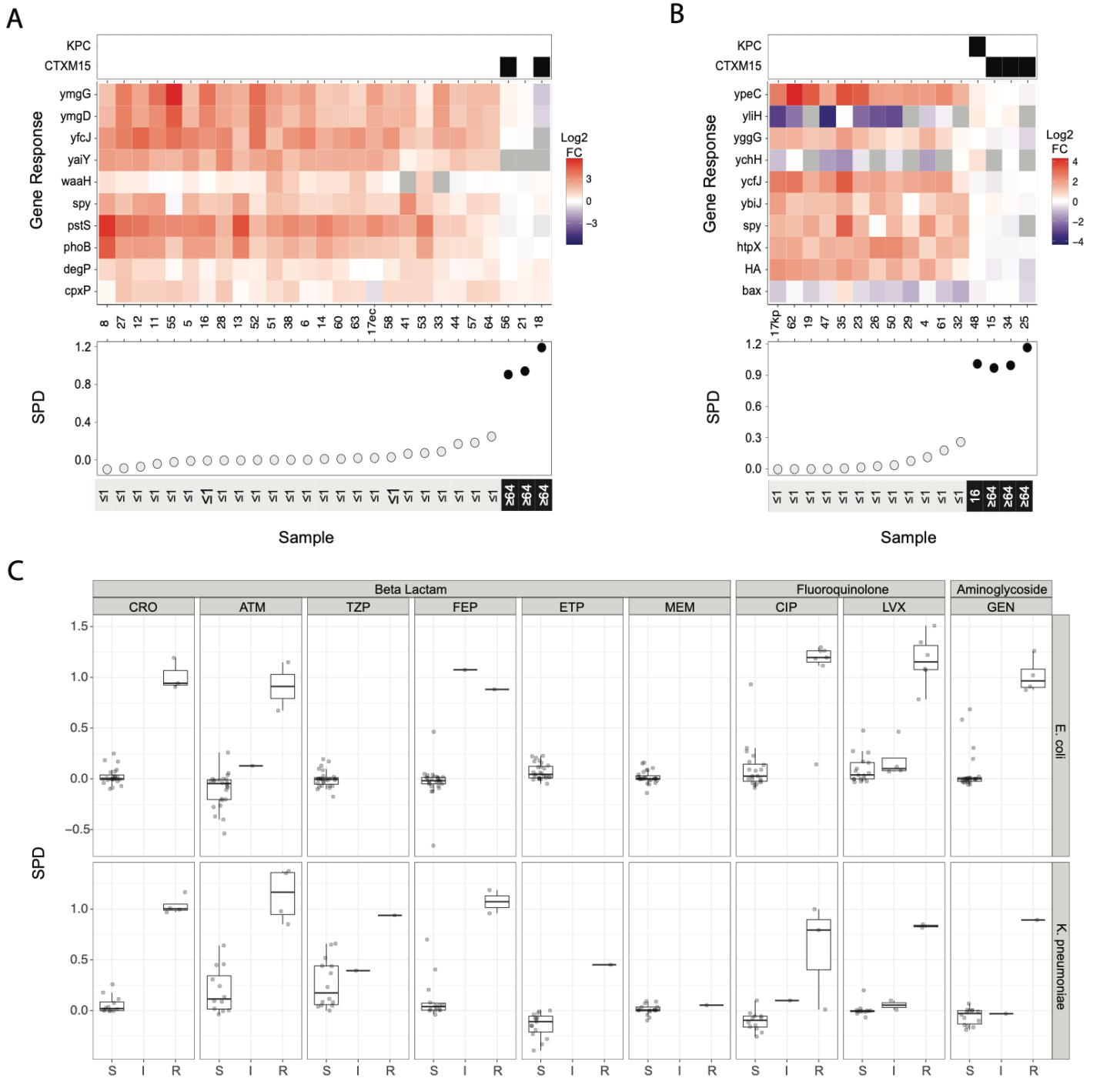
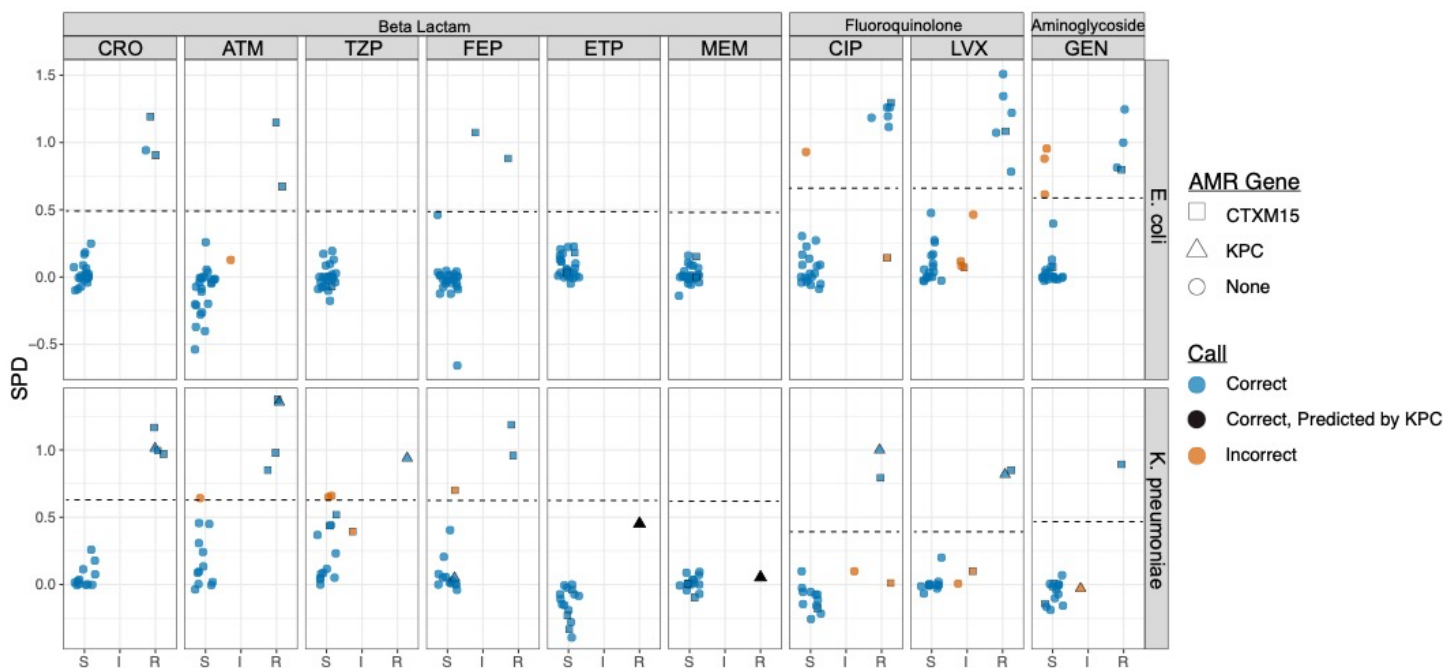


Figure 2: SPD Calculation from Transcriptional Response and Distribution. Transcriptional profile is distilled into a measure of treatment response with SPD, a single-value summary of the transcriptional response across the genes of interest (see Methods). (A-B). Heatmaps of the log₂ fold change in transcriptional response of each (A) *E. coli* or (B) *K. pneumoniae* isolate after exposure to ceftriaxone. Each row corresponds to a different gene of interest, while each column is a different blood culture sample. KPC and CTX-M-15 genotypes are shown above the heatmap, while sample numbers, SPD values, and MICs ($\mu\text{g/mL}$) are shown below. (C) Box-and-whisker plot of SPD values for each species and antibiotic combination, grouped by clinical susceptibility profile. Antibiotic abbreviations are as listed in Table 1.



461
462

Figure 3: Predictions of Drug Susceptibility by SVM Modeling and Genotype. SVM thresholds for each

463

drug class and bacterial species are shown by the dotted line. SVM is a model to find the optimal separation

464

between two classes of data (see Methods). Each point corresponds to an SPD value (y-axis) and is shaped

465

according to gene content and colored according to whether the SVM algorithm made the correct resistance

466

assignment. Samples are grouped according to clinical susceptibility classification (x-axis).

467

468

Antibiotic	<i>E. coli</i>			<i>K. pneumoniae</i>		
	S	I	R	S	I	R
Ceftriaxone (CRO)	24	0	3	12	0	4
Aztreonam (ATM)	24	1	2	12	0	4
Piperacillin Tazobactam (TZP)	27	0	0	14	1	1
Cefepime (FEP)	25	1	1	14	0	2
Ertapenem (ETP)	27	0	0	15	0	1
Meropenem (MEM)	27	0	0	15	0	1
Ciprofloxacin (CIP)	20	0	7	12	1	3
Levofloxacin (LVX)	17	4	6	12	2	2
Gentamicin (GEN)	23	0	4	14	1	1

469

470

471

472

Table 1: Isolates tabulated by their susceptibility profiles per standard testing in the clinical microbiology laboratory.