

Non-contact and non-constraining monitoring of the respiratory rate including sleep disordered breathing using ultra-wideband radar

Chin Kazuo^{1,2}, M.D., Ph.D., Okumura Shigeaki³, Ph.D., Endo Daisuke⁴, M.D., Ph.D., Nagata Kazuma⁵, M.D., Ito Tatsuya⁴, M.T., Murase Kimihiko⁶, M.D., Ph.D., Sunadome Hironobu⁷, M.D., Ph.D., Hoshi Mamiko⁸, M.D., Hiranuma Hisato⁸, M.D., Kozu Yutaka⁸, M.D., Ph.D., Sato Susumu^{7,9}, M.D., Ph.D., Hirai Toyohiro⁹, M.D., Ph.D., Gon Yasuhiro⁸, M.D., Ph.D., Sakamoto Takuya¹⁰, Ph.D., Taki Hirofumi³, M.D., Ph.D., Akahoshi Toshiki^{4,8}, M.D., Ph.D.

¹Department of Sleep Medicine and Respiratory Care, Division of Sleep Medicine, Nihon University of Medicine, Tokyo, Japan.

²Center for Genomic Medicine, Graduate School of Medicine, Kyoto University, Kyoto, Japan.

³MaRI Co., Ltd., Kyoto, Japan.

⁴Shinjuku Sleep and Respiratory Clinic, KEISHINKINENKAI Medical Corporation, Tokyo, Japan.

⁵Department of Respiratory Medicine, Kobe City Medical Center General Hospital, Kobe, Japan.

⁶Department of Advanced Medicine for Respiratory Failure, Graduate School of Medicine, Kyoto University, Kyoto, Japan.

⁷Department of Respiratory Care and Sleep Control Medicine, Graduate School of Medicine, Kyoto University, Kyoto, Japan.

⁸Division of Respiratory Medicine, Department of Internal Medicine, Nihon University School of Medicine and Graduate School of Medicine, Tokyo, Japan.

⁹Department of Respiratory Medicine, Graduate School of Medicine, Kyoto University, Kyoto, Japan.

¹⁰ Department of Electrical Engineering, Graduate School of Engineering, Kyoto University, Kyoto, Japan.

Corresponding author

Kazuo Chin

Department of Sleep Medicine and Respiratory Care, Division of Respiratory Medicine, Nihon University of Medicine.

30-1 Ohyaguchi kami-cho, Itabashi-ku, Tokyo 173-8610, Japan

Phone. +81-3-3972-8111 (EXT 2401 · 2402)

Fax. +81-3-3972-7552

E-mail. chin.kazuo@nihon-u.ac.jp

Supplemental Data

Figure legends

Figure S1.

Respiratory patterns according to the ratio of two (normal breath and apnea or hypopnea)

Gaussian distributions in the Expectation-Maximization algorithm

(a) Measurements by ribcage and abdominal respiratory inductance plethysmographs, (b)

Measurements by the flow sensor and (c) Displacements of movements by the radar.

When the ratio of two (normal breaths and apnea or hypopnea) Gaussian distributions in the

Expectation-Maximization algorithm was 0.93, there was no apnea or hypopnea. When it was

0.32, there was overt apnea or hypopnea and we made the threshold 0.70.

EM: Expectation-Maximization

Figure S2.

Comparison of respiration rates (RR) of participants with and without a blanket.

Orange solid line with circles shows the manually counted RR. Gray solid line with cross points

shows results of radar measurements. Methods for calculation of RR by of radar or manually were

the same as in Fig 1-d.

Figure S3.

Scatter plots between AHI and REI by radar or PM and the 3% ODI.

Each correlation was significant ($p < 0.001$).

AHI: apnea hypopnea index, REI: respiratory event index, PM: portable monitoring, ODI: oxygen

desaturation index, MWR: millimeter wave radar.

Figure S1.

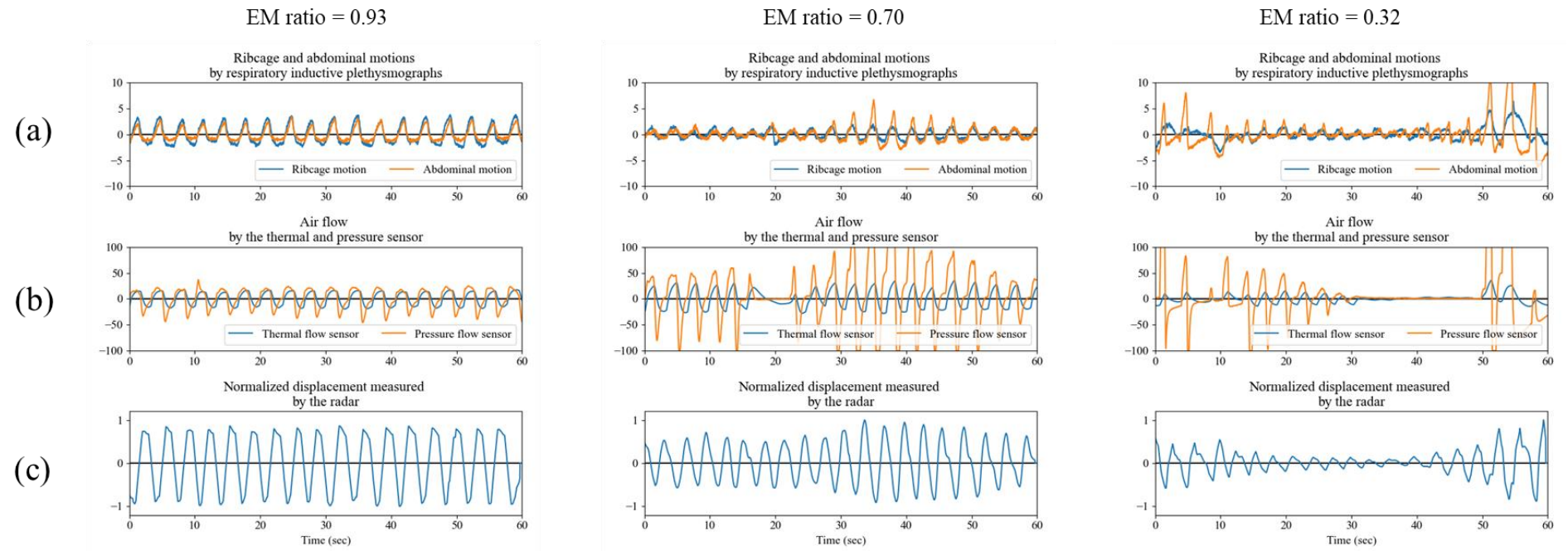


Figure S2.

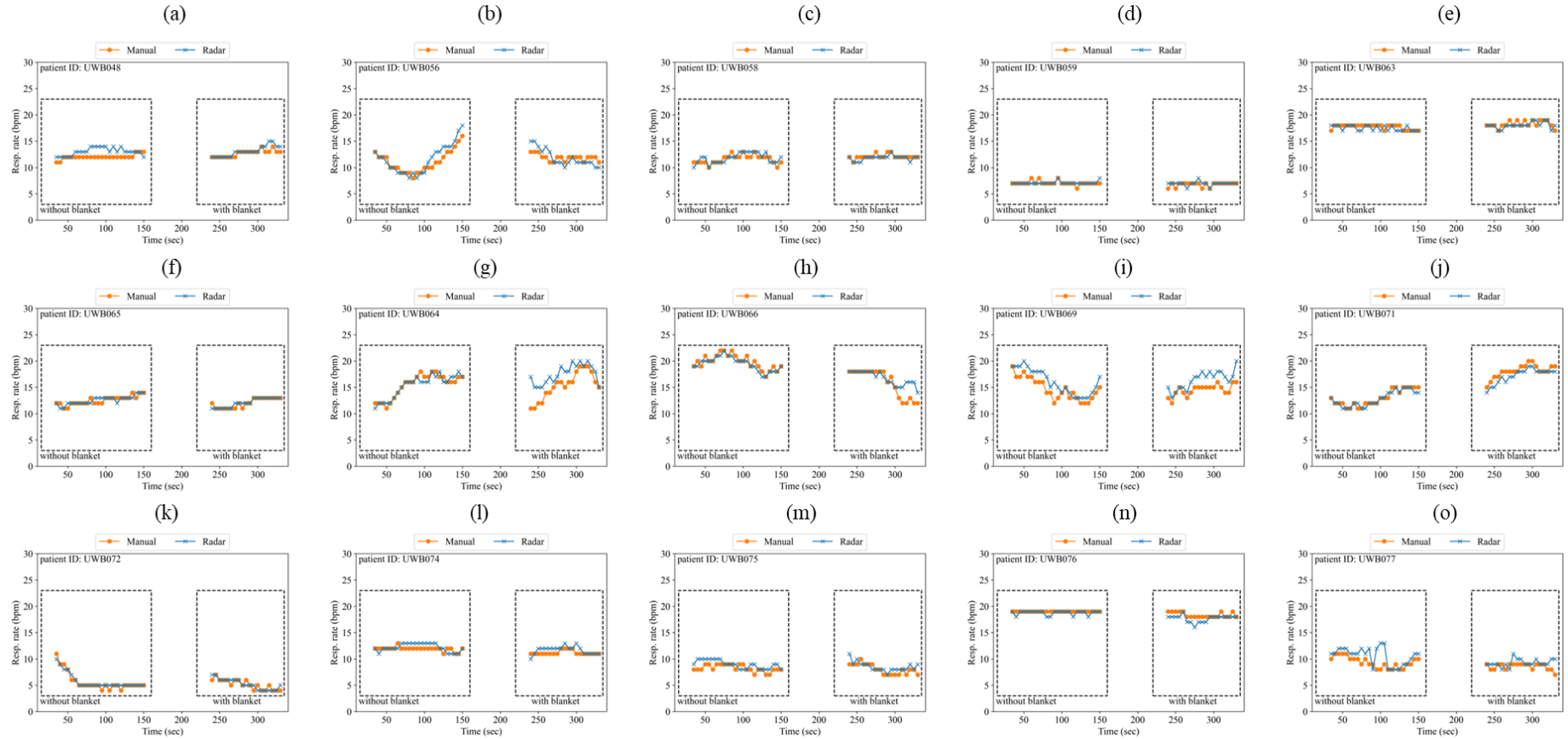


Figure S3.

