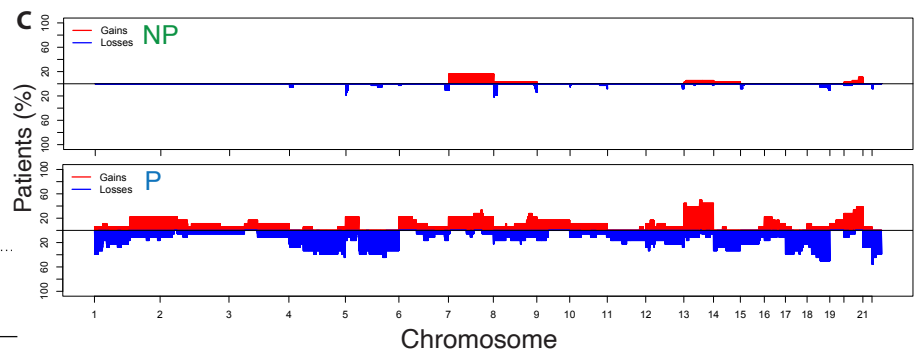
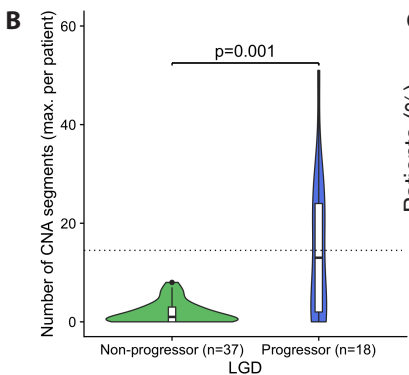
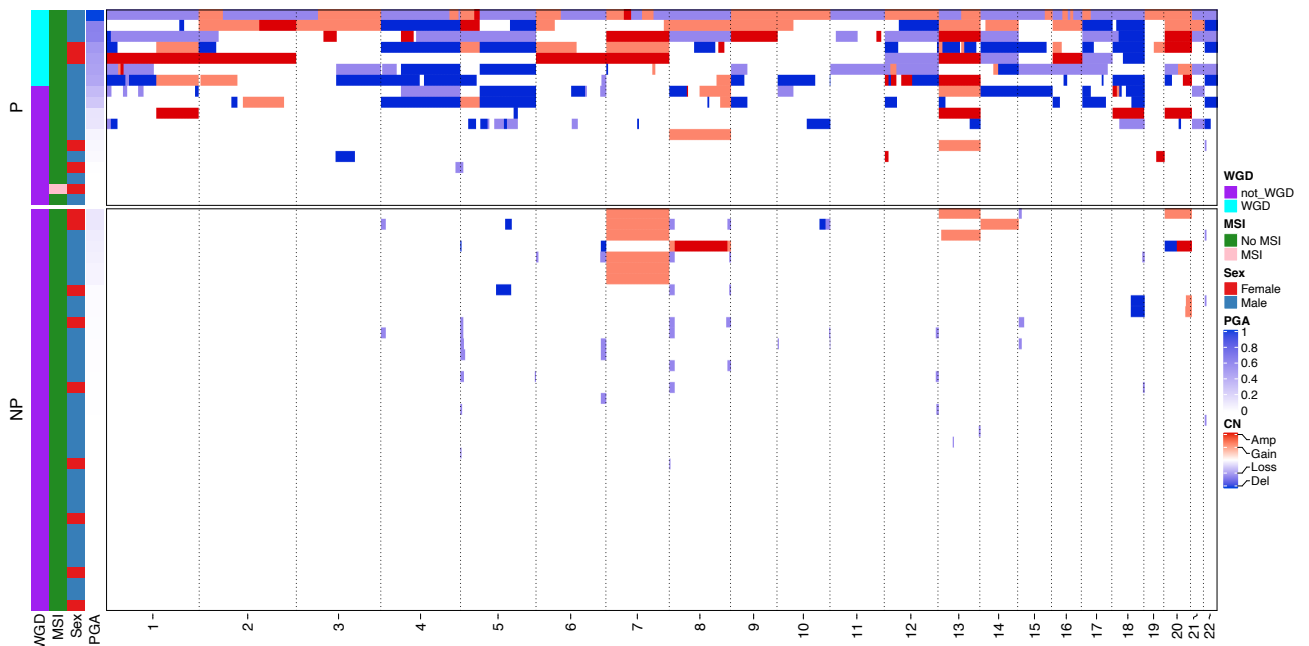


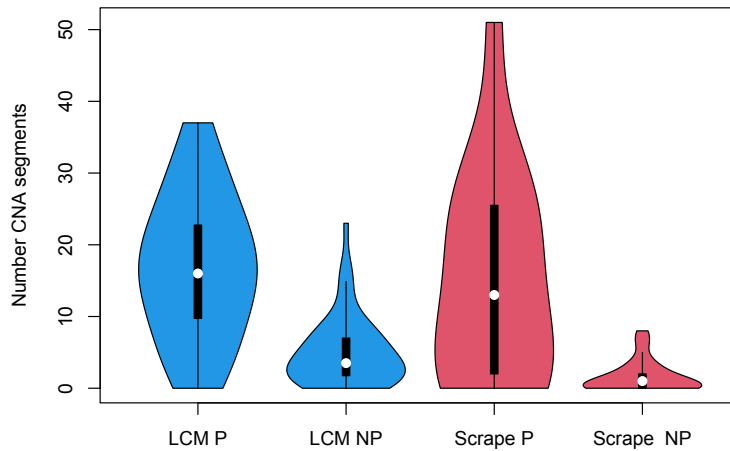
Supplementary Information

Supplementary Figure S1: Genomic alterations in non-progressor versus progressor LGD in validation cohort. **A.** Heatmap of genome-wide copy number alteration for lesions in the validation LGD cohort, sorted by percent genome altered. **B.** Violin plots showing the number of altered genomic segments in progressor and non-progressor lesions. **C.** Genome-wide CNA frequency for non-progressor (NP, top) and progressor (P, bottom) patients. For patients with multi-region analysis the most highly altered sample per patient was included.

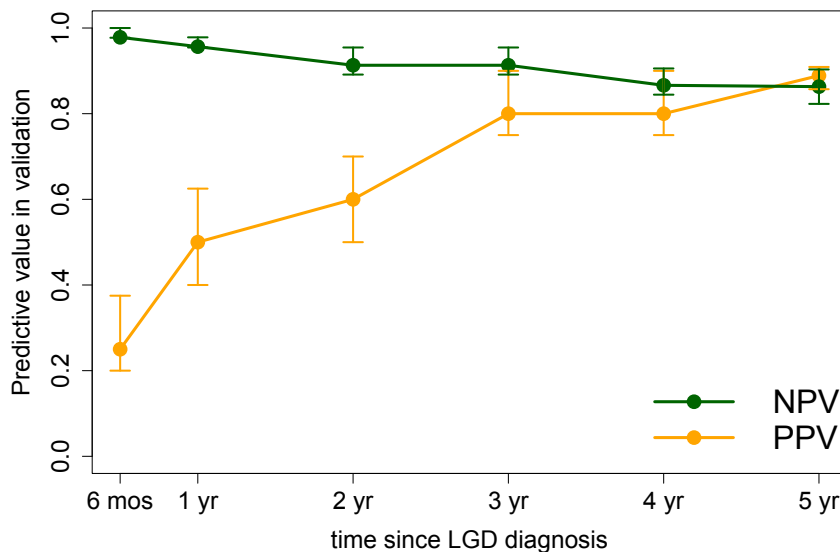
A Validation data



Supplementary Figure S2: Detection of copy number altered (CNA) segments by epithelial isolation method. Laser capture microdissection (LCM) tissue (blue) vs. Scrape tissue (pink). For LCM n = 76, for Scrape n = 46. By Mann-Whitney U tests for strategies of P vs P and NP vs NP groups, the only statistically significant difference here was LCM NP (median 3.5 CNA segments) vs Scrape NP groups (median 1 CNA segment) with $p=2.9e-5$.



Supplementary Figure S3: Predictive accuracy of genomic biomarker using a randomly selected sample from each patient. Re-calculation of PPV and NPV of genomic CNA score biomarker when a random sample for each patient in the validation cohort is used for prediction. 95% confidence intervals are shown for each predicted time point (1000 simulations of random sample selection). PPV= positive predictive value. NPV = negative predictive value.



Supplementary Table S1: Top chromosome arm level differences in max frequency of changes across samples in progressor vs non-progressor patients. *Adjusted p-values provided for Fisher's exact test with Benjamini-Hochberg multiple hypothesis testing correction applied.

Chromosomal arm with CNA	Max frequency in progressors (n = 22)	Max frequency of non-progressors (n = 45)	Odds ratio	Adjusted Fisher's exact test p-value*
Loss on 4q	0.45	0.07	11.14	0.008
Gain on 5p	0.36	0.04	11.74	0.012
Loss on 5q	0.64	0.16	9.09	0.004
Gain on 7p	0.59	0.18	6.45	0.012
Gain on 8q	0.55	0.13	7.50	0.011
Loss on 11p	0.27	0	Inf	0.011
Loss on 11q	0.32	0.02	19.51	0.012
Loss on 17p	0.59	0.07	18.96	<0.001
Loss on 17q	0.5	0.02	40.96	<0.001
Loss on 18q	0.45	0.09	8.21	0.012