

## Feasibility of Incorporating More Walking into Commuting with Public Transportation

### **Yuval Hadas, PhD**

Department of Management  
Bar-Ilan University, Ramat Gan, 5290002, Israel  
Email: [yuval.hadas@biu.ac.il](mailto:yuval.hadas@biu.ac.il)  
ORCID: 0000-0002-3767-846X

### **Dan Emanuel Katz, MS**

Department of Management  
Bar-Ilan University, Ramat Gan, 5290002, Israel  
Email: [dan-katz@outlook.com](mailto:dan-katz@outlook.com)

### **\*Jonathan Rabinowitz, PhD**

School of Social Work  
Bar-Ilan University, Ramat Gan, 5290002, Israel  
Email: [Jonathan.rabinowitz@biu.ac.il](mailto:Jonathan.rabinowitz@biu.ac.il)  
ORCID: 0000-0002-6845-8064

\*Corresponding author: Jonathan Rabinowitz, PhD

Declarations of interest: none

## Abstract

Regular physical activity is vital for improving and maintaining overall health. Despite this, many people struggle to incorporate physical activity into their daily lives. Previous studies, based primarily on simulations and synthetic data, have reported the potential for increased walking resulting from mode shifts in public transport (PT). This suggests that it may be possible for PT commuters to meet some of their physical activity goals while commuting. PT users rely on trip planning apps, but these apps do not currently prioritize walking as part of the journey. This research is aimed at investigating the potential of more walking on PT accessibility and level of service. It is the first stage of the More Walking population-based wellness initiative aimed at facilitating more walking by modifying trip planning apps to increase walking. For this phase of the project, we examined the impact of various walking thresholds using a trip planning algorithm and conducted a study of the feasibility of increasing walking thresholds among all 2,149 commuters to the same work destination in a suburb of Tel-Aviv. We found that when more walking is introduced, more potential trips are available, more origins are covered-- meaning better accessibility, waiting time is decreased, less transfers are required and that it can reduce total travel time. The results are encouraging that introducing more walking into a commute will be a feasible way to increase physical activity and promote wellness.

**Keywords:** Trip planning, transportation, walkability, public health, physical activity, commuting

## **1. INTRODUCTION**

Public transportation (PT) is more environmentally sustainable, efficient, and economical than any other form of travel [1]. Walking, which is frequently the last mile solution, has important health benefits, a recent metanalysis that included data on almost 50,000 persons found that taking more steps per day was associated with a progressively lower risk of all-cause mortality [2]. PT, aside from being more sustainable than private cars, has a positive impact on health and wellbeing. Persons living in more walkable and PT-oriented neighborhoods are more likely to walk for transport and less likely to be overweight or obese [3]. This research is aimed at evaluating the impact of increasing walking on spatial and temporal properties of the PT system. It is the first stage of the More Walking project, a population-based wellness initiative aimed at increasing walking by modifying trip planning apps to include more walking. For this phase of the project, we examined the impact of various walking thresholds using a trip planning algorithm and conducted a study of the feasibility of increasing walking thresholds in a cohort of employees working at the same destination.

### **1.1 LITERATURE REVIEW**

The health benefits of walking have been studied thoroughly. A short walk of 20 minutes each day can reduce the chance of early death by 25%. Walking helps prevent chronic diseases such as heart disease, type 2 diabetes, risk of stroke and some cancers [2, 4, 5]. Walking is easy to include as part of everyday activities. More people walking also benefits the community, it enhances both actual and perceived safety of public spaces, reduces vehicle emissions and traffic congestion, stimulates local businesses and economic growth. Moreover, walking as a mode of transport reduces the financial burden on individuals and governments, leading to transport

savings for both parties. Promoting walking gives people the option to move around without the need for a private vehicle. Accessibility to PT ensures that individuals have diverse and convenient mobility, contributing to a more inclusive and accessible urban environment [6].

Previous studies have reported the potential for increased walking resulting from mode shifts in public transport based on simulations [7-14], synthetic data [15, 16] and projections based on sampling of GPS data [17]. Previous studies did not consider the impact of variable walking distances on overall travel time. In the current study, we used origin and destination of actual commuters. We examined the effects of changing walking thresholds in trip planning on time spent walking as well as on overall travel time. The study is part of our quest to identify and promote simple, sustainable and impactful healthy lifestyle changes. Our approach is grounded in time-use epidemiology which explores effects of health-related time-use patterns in populations and optimizing distribution of time for population health [18].

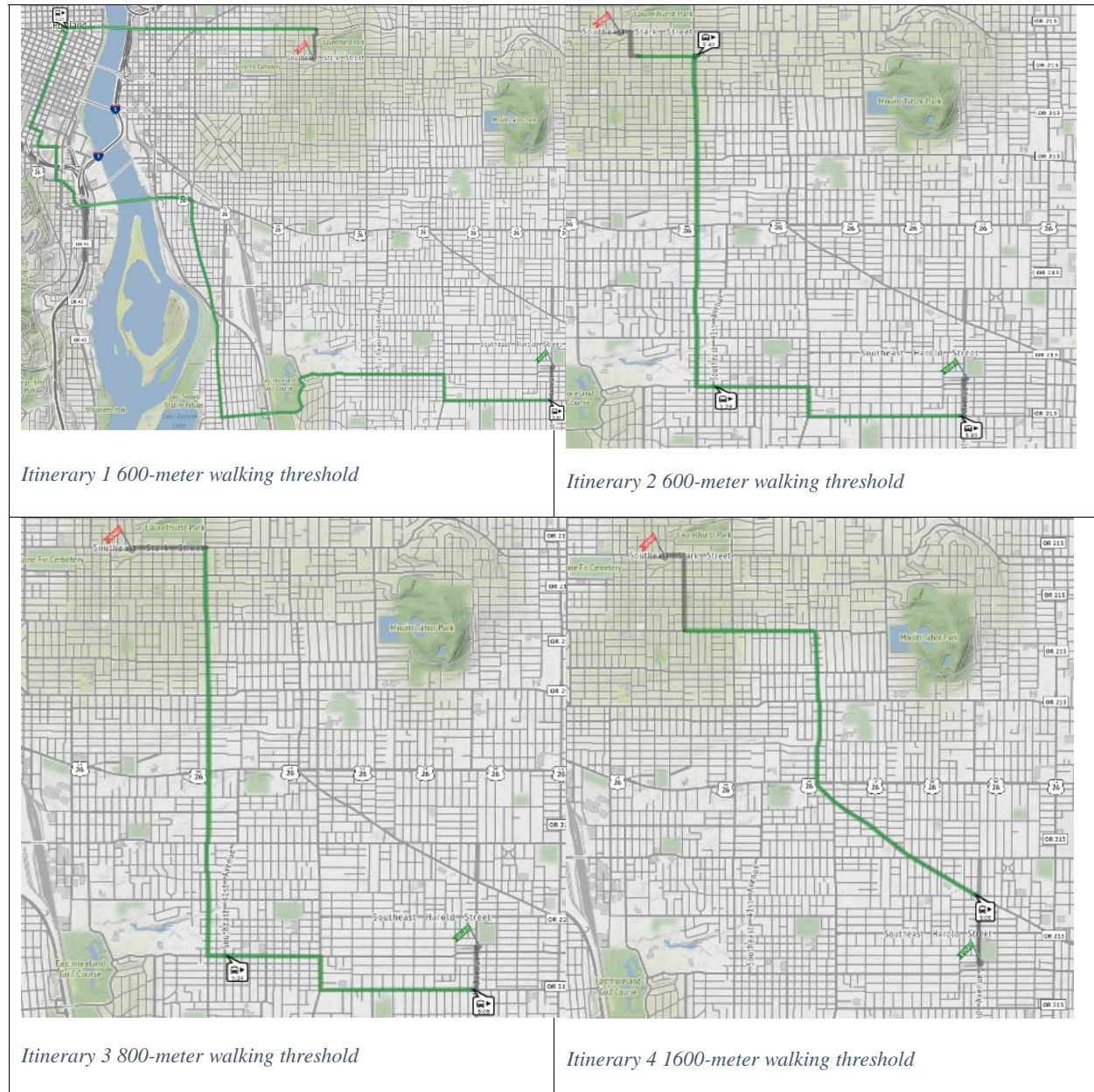
Many PT users rely on trip planning apps to route their journey and pay for the ride. These apps do not currently prioritize walking as part of the journey. Popular trip planners, such as Google Maps, Moovit, Citymapper, Apple Maps, Bus Nearby (Hopon Mobility, Ltd) and OneBusAway, do not have the option to vary the maximal allowed walking distance nor the option to set a minimum desired amount of walking. Some apps, like efobus (efobus.com), allow adjusting maximum aerial distance as a very rough proxy for walking distance. Another group of apps focus on helping walkers find the most inviting route (e.g., walkonomics.com 2010-2018) but do not include PT. However, including an upwardly adjustable walking distance parameter in the trip planning application can provide the user with additional trip options, the potential of quicker and more reliable trips (less transfers), and improved wellbeing [19].

The following simple example illustrates the above-mentioned potential advantages of increasing the amount of walking threshold on increasing walking without lengthening travel time. The open-source trip planner – OTP [20] was used to construct trip plans (itineraries) for the same origin and destination with variable walking distance thresholds (only transit stops or stations within that radius from the origin or destination) using the default map (Portland Oregon) in OTP. TABLE 1 presents the main attributes (travel time, walking distance to, and number of transfers) for 600-, 800-, and 1,600-meters walking distance thresholds and Figure 1 draws the itineraries on the map (green – transit, grey – walking). Small walking threshold yields a longer trip (#1), or multiple transfers (#2), while large thresholds shorten the trip and reduce the number of transfers (#3), or even eliminate transfers (#4).

**TABLE 1 Itineraries with different walking distance thresholds**

<b>Itinerary</b>	<b>1</b>	<b>2</b>	<b>3</b>	<b>4</b>
Walking Distance threshold [m] for each segment	600	600	800	1,600
Total travel time [min.]	65	52	53	42
Total walking distance [m]	1,000	1,200	1,400	2,000
Transfers	1	2	1	0

**Figure 1 Four transportation itineraries with varying walking distance thresholds drawn on a map**



## 2. METHODOLOGY

We examined the impact of various walking thresholds using a trip planning algorithm and conducted a study of the feasibility of increasing walking thresholds among all 2,149 employees with the same work destination, Bar-Ilan University located in a suburb of Tel-Aviv. Study

dataset included only the addresses of employees. The study was approved by the Human Subjects Institutional review board at Bar-Ilan University.

PT itineraries were generated by the Open Trip Planner – OTP [20] in batch mode. The destination in every itinerary was Bar-Ilan University and the origin progressed through the list of employee addresses. For each OD (origin destination) pair, several itineraries were generated, including all trip legs, the start and finish stops, mode, ride/walk times, waiting times and distance. The generated itineraries were controlled by maximum transfers and maximal walking distance threshold. The OD matrix was used to generate itineraries by varying walking thresholds.

The second step was to eliminate inferior itineraries which are not likely to be used. For this purpose we used Pareto Front Identification which is designed to identify optimal solutions based on multi-criteria [21]. Specifically, we employed the Hierarchical Non-Dominated Sorting (HNDS) algorithm [22]. The algorithm first sorts all candidate solutions in ascending order by their first objective. Then it compares the first solution with all others one by one to make a rapid distinction between different quality solutions. HNDS can obtain a non-dominated solution without any dominance comparison. HNDS ranks the solutions of a population  $P$  and assigning those to  $K$  Pareto fronts  $F_i, i = 1, 2, \dots, K$ . No matter what the number of objectives is, this approach can obtain a non-dominated solution by comparing only the solutions' first objective values. Additionally, there are only two possible relationships between two solutions: either the preceding solution dominates the succeeding one, or they are mutually non-dominated, while a preceding solution can never be dominated by any succeeding solution. As applied here, to determine dominance, the algorithm evaluates whether a solution's total travel time and walk time are greater than or equal to those of any other solution. If both criteria are met, the solution

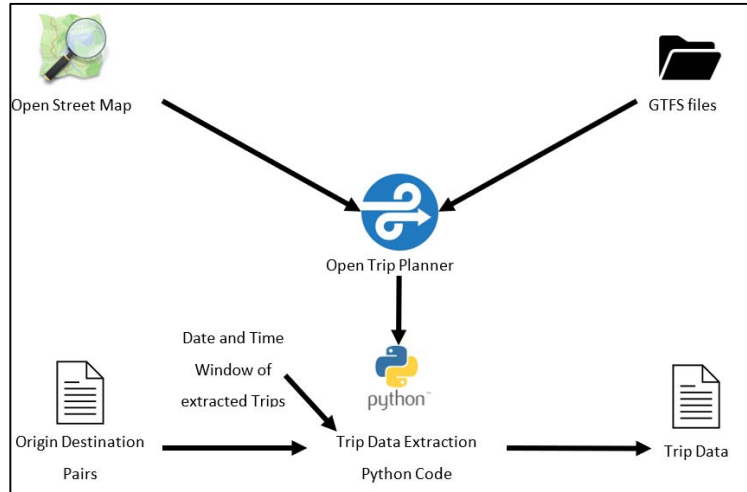
is considered dominated and subsequently removed from the selection pool. This filtering process helps to identify and eliminate inferior trip options that passengers would be unlikely to choose. The remaining solutions were grouped by different walking thresholds.

Figure 2 shows the process and a route generated. The script reads an input file that contains the OD coordinates (i.e., O=employees address and D=university address). The algorithm then generates an OTP query, specifying the OD-pair and the journey starting time. Next, the algorithm sends requests to the local OTP server that hosts the transportation network data. These requests are based on the OTP query generated earlier. The server responds with the chosen relevant information, including the trip start time, travel time, distance, and other details of the itinerary.

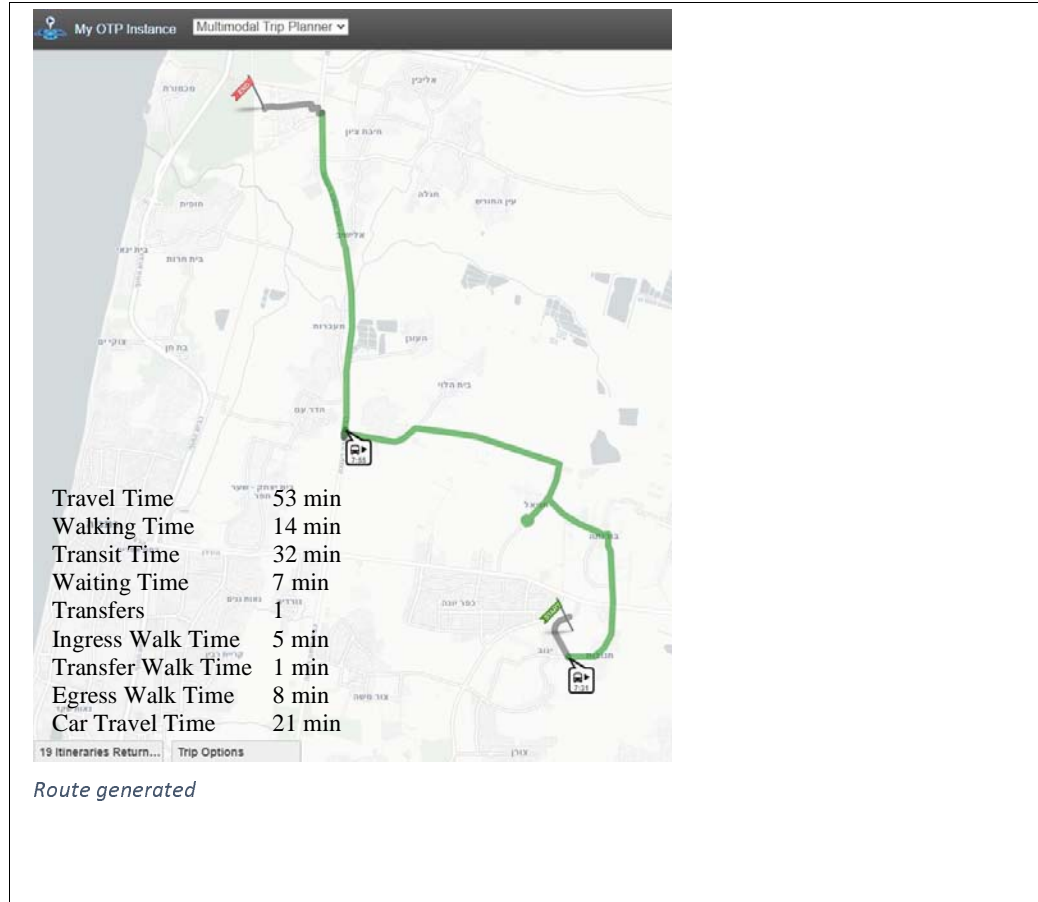
Subsequently, the algorithm parses the response from the server to extract the necessary information. This extracted data is then used to generate a new file that stores the results of the OTP query. This process can efficiently process and obtain the desired trip information from the transportation network data, allowing for further analysis and insights related to the spatial and temporal properties of the PT network in the research area. Map in Figure 2 depicts a PT itinerary from OTP with the key attributes.



Figure 2 Process diagram and route generated



Process diagram of methodology



## 2.1 Trip Planning Parameters

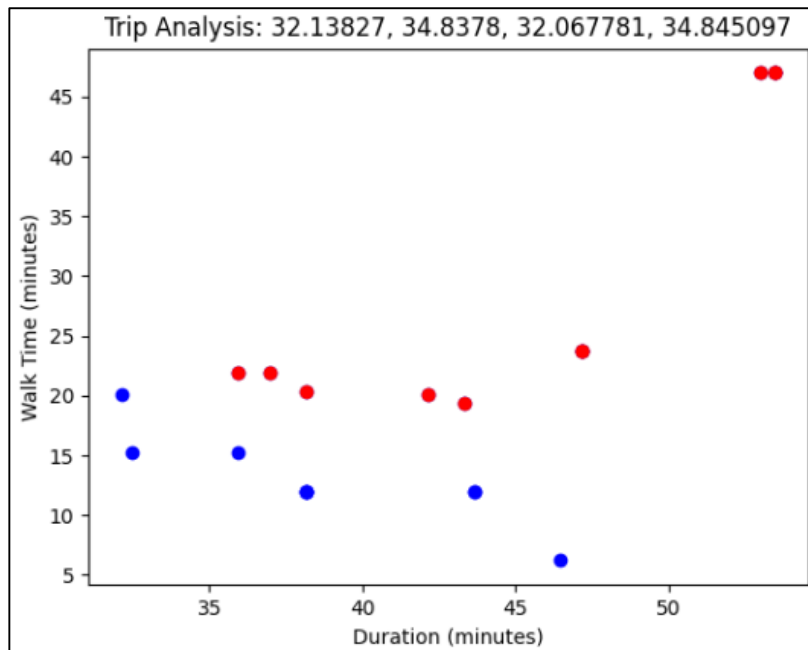
We used the following parameters below to analyze the impact of walk time and distance in the PT system.

- Trip Start Time
- $TT_i = \sum(IWT_i + TTr_i + TWT_i + TWa_i + EWT_i)$  (1)
- *where:*
- *TT represents the Total Travel Time*
- *IWT represents the Ingress Walking Time (the time to reach the first stop from the origin)*
- *TTr represents the Transit Time*
- *TWT represents the Transfer Walk Time*
- *TWa represents the Waiting Time*
- *EWT represents the Egress Walking Time (the time to reach the destination from the last stop)*
- Number of Transfers
- (Boarding and Alighting) Station Codes and Coordinates

The overall walking time includes the ingress walking time (from origin to boarding point), the transfer walking time (between transfer stations) and the egress walking time (from alighting point to destination). Transit time is the time spent traveling within the PT network. The number of transfers made during a trip indicates the complexity and convenience of interchanging between different PT modes or lines. Waiting time measures the time passengers spend waiting for the arrival of PT while transferring.

Figure 3 illustrates the Pareto Front Identification for trips from one OD pair process. The axes represent two objectives: 1) trip duration (X), and 2) walk time (Y) each dot is a potential trip. The blue colored dots are the dominated trips, while the red dots are the non-dominated

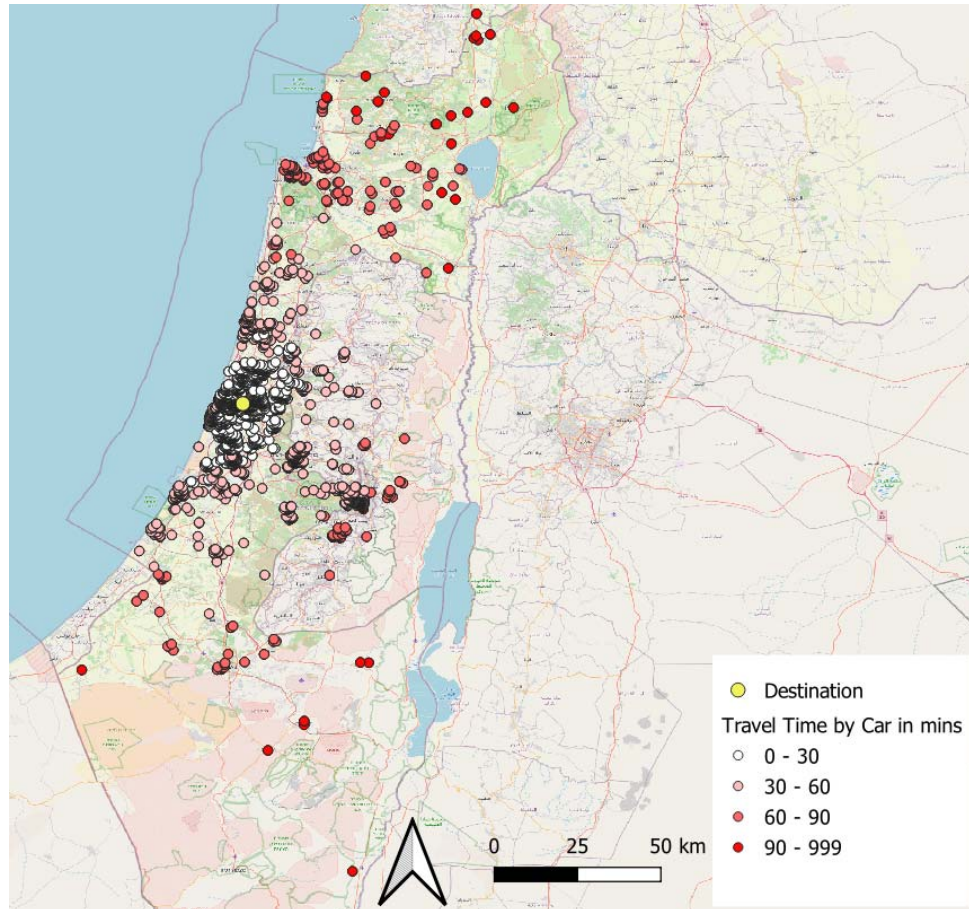
(inferior) trips. Hence, only the dominated trips were used for the analysis. Analysis was conducted in Python using the Pandas open-source data analysis and manipulation tool.



**Figure 3 Pareto Front Identification for trips from one OD pair**

### 3.0 RESULTS

Figure 4 presents the origin (i.e., home address) for the trip to work for all 2,149 employees, each dot is colored based on the travel time by car to the campus. The yellow dot is the location of the campus. Data on potential itineraries travelling to work at Bar-Ilan University were examined for various walking thresholds.



**Figure 4 Origins (Bar-Ilan employees) and Destination (Bar-Ilan Campus) used in the case study**

Table 2 and Figure 5 present the network summary by walking distance thresholds for all origins and for the subset of employees living within a 30-minute drive (Table 2 b, Figure 5, orange line). As seen in Table 2 (a & b) and Figures 5 (a, b & c), when more walking is introduced, more potential trips are available, more origins are covered, meaning more employees can use PT to get to work and less transfers are required. For those living within 30 minutes by car travel (Table 2(b) and Figure 5(d) orange line), transit time also declines as walking distance threshold increases. These decreases indicate that the more passengers are ready to walk, the more direct and efficient the trip options become, reducing the need for transfer connections and waiting. Beyond the threshold of 1,000m, the average number of transfers remains relatively stable, with minor fluctuations, demonstrating the system's ability to

maintain an optimal level of transfer connections even as more walking is integrated into the commute.

**TABLE 2 Network summary (all times in minutes, rounded to nearest minute)**

(a) All commuters

<b>Threshold (m)</b>	<b>Number of Trips</b>	<b>Covered Origins</b>	<b>Average Total Travel Time</b>	<b>Average Walk Time</b>	<b>Average Transit Time</b>	<b>Average Waiting Time</b>	<b>Average Number of Transfers</b>	<b>Average Car Travel Time</b>
100	92	33	48	1	35	12	1.97	29
500	3,925	1,101	47	5	35	8	1.49	27
1,000	10,021	1,980	52	8	37	8	1.36	30
1,500	11,941	2,127	53	9	37	7	1.33	31
2,000	12,168	2,132	53	9	37	7	1.32	31
2,500	12,228	2,135	53	9	37	7	1.31	31

(b) Commuters with travel time by car < 30min. (all times in minutes)

<b>Threshold (m)</b>	<b>Number of Trips</b>	<b>Covered Origins</b>	<b>Average Total Travel Time</b>	<b>Average Walk Time</b>	<b>Average Transit Time</b>	<b>Average Waiting Time</b>	<b>Average Number of Transfers</b>	<b>Average Car Travel Time</b>
100	51	18	30	1	23	6	1.53	19
500	2,793	728	32	5	23	5	1.10	18
1,000	7,239	1,239	34	8	23	4	0.94	19
1,500	8,589	1,320	34	9	21	4	0.89	19
2,000	8,730	1,321	34	9	21	4	0.88	19
2,500	8,762	1,323	34	9	21	4	0.88	19

**Figure 5**

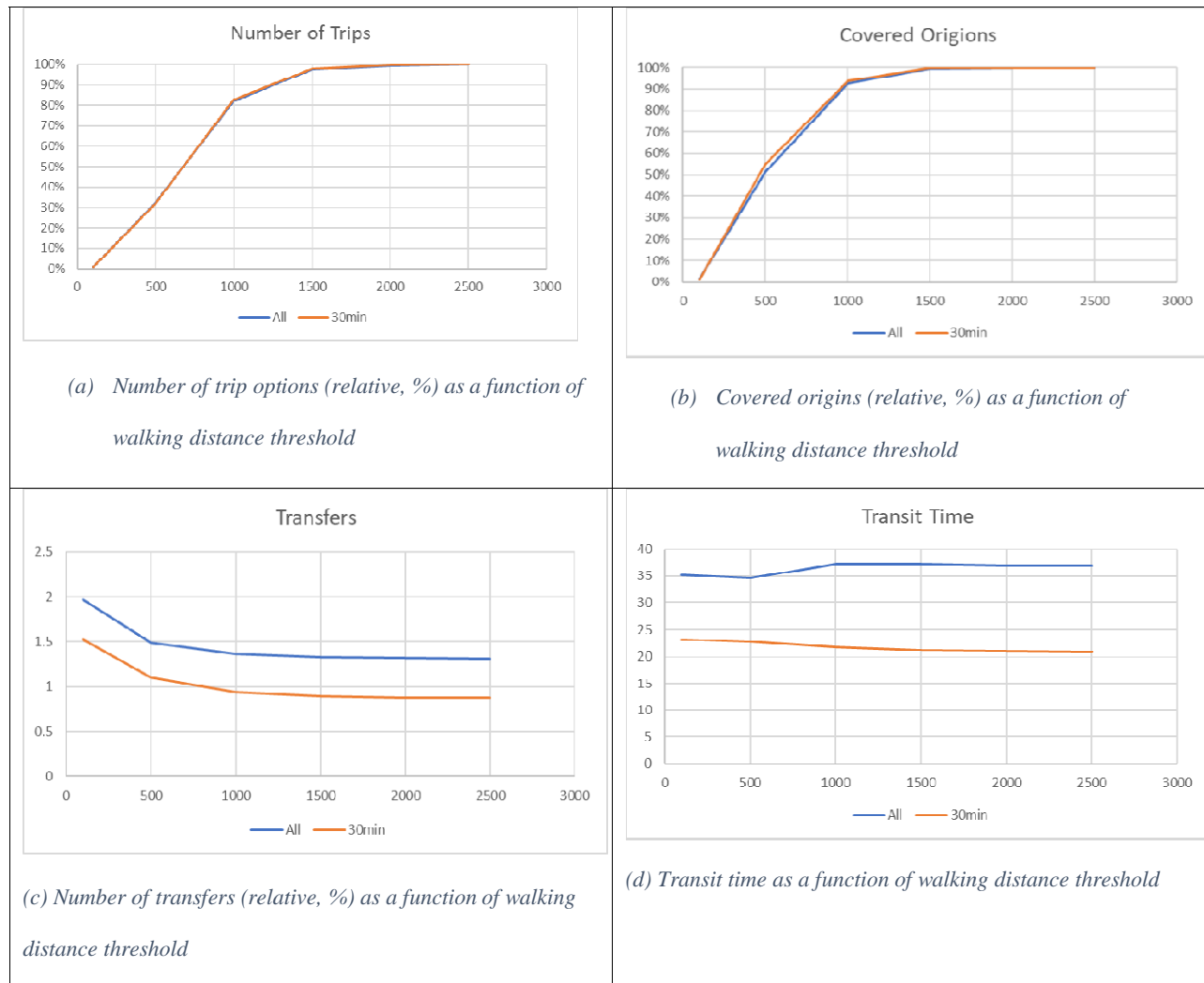
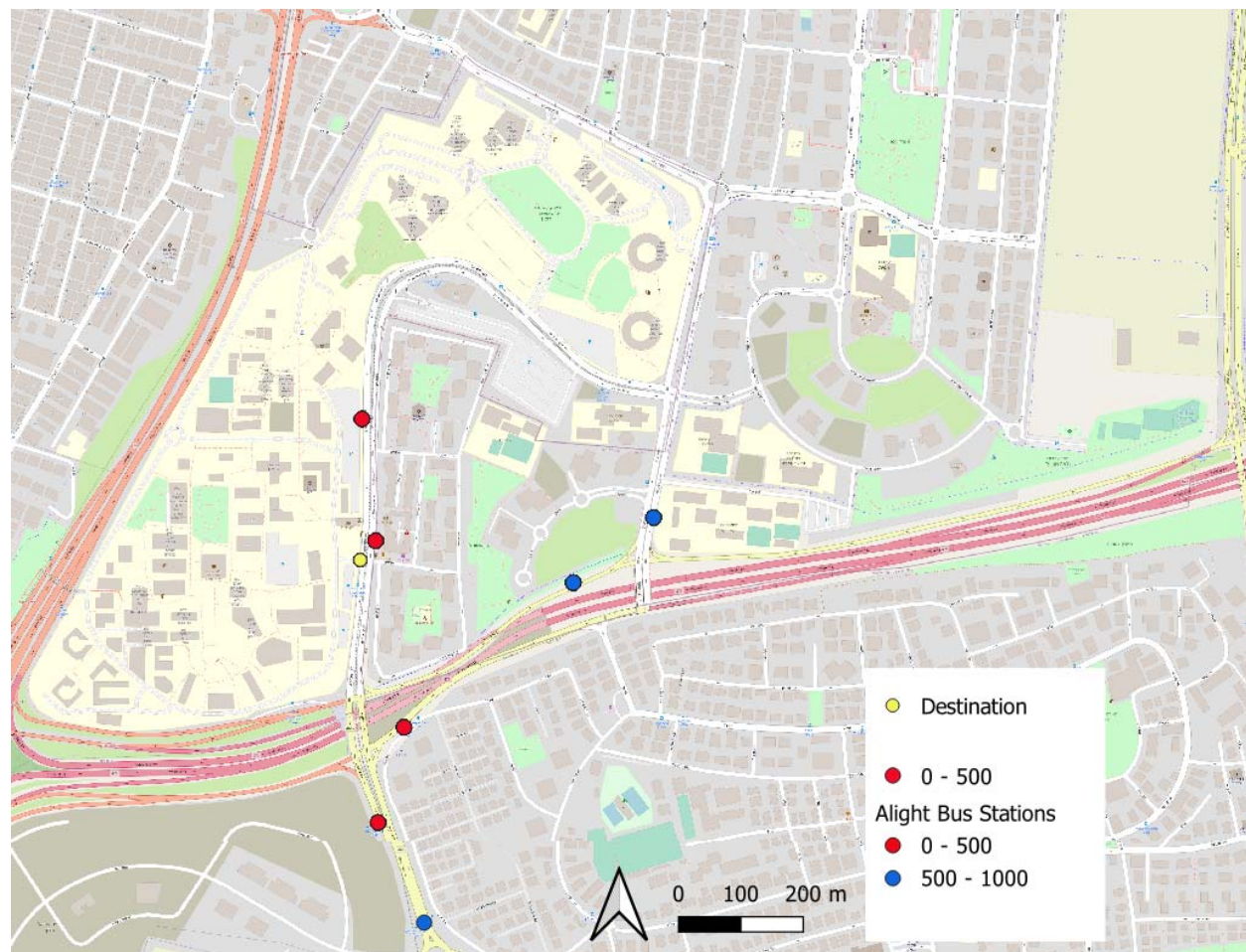


Figure 6 shows the alighting bus stations that are being used when walking up to 500m and 1000m, respectively. The number of stations increases by 3 from 4 to 7, which allows the passengers to identify, which of those stations to choose from. These additional stations have a higher egress walking time as they are located further away from the campus. However, additional trips options can be used.



**Figure 6 Alight Bus Stations for 500m and 1000m walking distance threshold**

#### 4.1 Discussion of results

As part of a population-based wellness intervention research initiative we examined the feasibility of including more walking into commuting with public transportation using data on 2,149 employees working at the same location. We found that for most of the potential routes as walking thresholds were increased total travel time did not increase and commuters were potentially able to benefit on average from a 9-minute walk going to work. Considering that a short walk of 20 minutes each day can reduce the chance of early death by 25% [2, 4, 5] this could result in considerable benefit.



These results are consistent with previous research that physical activity targets can be met from commuting with public transportation [15, 23, 24]. Different from previous studies we examined the potential effects of increasing walking thresholds in route planning, setting the stage for a population-based intervention of encouraging commuters to increase walking thresholds in their trip planning transportation apps.

#### 4.2 Discussion of methods and limitations

Studies of transportation are dependent on infrastructures, services and locations. As such each place differs. In the current study we were able to control for destination, as all persons worked at the same location. Since each place differs all studies in this area are in some form or another case studies. We believe that the findings from this case study are situationally grounded and generalizable meeting the duality principle for informative case research [25]. Bar-Ilan University is in the greater Tel Aviv metropolitan area, with no special dedicated buses to the campus nor a train station. The results from this case are important as they provide additional evidence based on actual data of origin and a fixed destination that supports what other studies have found using simulations and synthetic data about the effects of modal switches in transit and walking. We have gone a step beyond in considering the effects of varying walking thresholds.

While the results are encouraging, we do not know the extent to which commuters will incorporate more walking which we will explore in the next phase of the More Walking research program. Another limitation of the current study is that we did not consider topography, weather impacts, need to carry cargo and possible difficulty walking long-distances. We did not take into consideration the risk of missing the service or missing a transfer. Future work in this area should strive to address the aforementioned and include measures of walkability [26, 27].

## 5. Conclusions

One of the primary advantages of increased walking as part of a PT commute is the promotion of physical activity. By incorporating walking segments into trips, commuters are more likely to engage in regular exercise, leading to improved health and overall well-being. Walking as a means of commuting can contribute significantly to a healthier lifestyle.

The current study reveals that increased walking thresholds can result in shorter overall travel times and a larger variety of journey options for passengers. By having more choices for their routes, commuters can select paths that best suit their preferences and schedules. Additionally, this increase in journey options enhances the overall reliability of the transportation system. When faced with unexpected delays or disruptions, passengers have alternative routes to choose from, minimizing the impact on their daily commutes. Another benefit observed in the analysis is the reduction in the number of transfers and overall waiting time as walking distance increases. As passengers cover more distance on foot, the need for multiple transfers decreases. This translates to shorter waiting times at transfer points, contributing to a more time-efficient and convenient commuting experience. As a result, passengers can experience quicker and more efficient trips, making PT a more attractive option for daily commuting.

In conclusion, this study demonstrates that incorporating more walking into a commute with PT can bring several positive outcomes. Apart from the evident health benefits, more walking in a PT commute can lead to higher reliability, an increase in journey options and potentially more time efficient trips. Furthermore, the reduction in transfers and waiting time enhances the overall efficiency and convenience of the transportation system. Emphasizing walking as an integral part of the commute emerges as a promising approach to optimize PT

services and promote a healthier and more sustainable urban mobility experience. Promoting more walking can be achieved by integrating walking thresholds within PT trip planning apps.

## **ACKNOWLEDGEMENTS**

Funding: This work was supported by a grant of the Israeli Smart Transportation Research Center (ISTRC).

## REFERENCES

- [1] G. Beirão, J.A. Sarsfield Cabral, Understanding attitudes towards public transport and private car: A qualitative study, *Transport Policy* 14(6) (2007) 478-489.
- [2] A.E. Paluch, S. Bajpai, D.R. Bassett, M.R. Carnethon, U. Ekelund, K.R. Evenson, D.A. Galuska, B.J. Jefferis, W.E. Kraus, I.M. Lee, C.E. Matthews, J.D. Omura, A.V. Patel, C.F. Pieper, E. Rees-Punia, D. Dallmeier, J. Klenk, P.H. Whincup, E.E. Dooley, K. Pettee Gabriel, P. Palta, L.A. Pompeii, A. Chernofsky, M.G. Larson, R.S. Vasani, N. Spartano, M. Ballin, P. Nordström, A. Nordström, S.A. Anderssen, B.H. Hansen, J.A. Cochrane, T. Dwyer, J. Wang, L. Ferrucci, F. Liu, J. Schrack, J. Urbanek, P.F. Saint-Maurice, N. Yamamoto, Y. Yoshitake, R.L. Newton, Jr., S. Yang, E.J. Shiroma, J.E. Fulton, Daily steps and all-cause mortality: a meta-analysis of 15 international cohorts, *Lancet Public Health* 7(3) (2022) e219-e228.
- [3] H.M. Badland, J.N. Rachele, R. Roberts, B. Giles-Corti, Creating and applying public transport indicators to test pathways of behaviours and health through an urban transport framework, *Journal of Transport & Health* 4 (2017) 208-215.
- [4] L. Garcia, M. Pearce, A. Abbas, A. Mok, T. Strain, S. Ali, A. Crippa, P.C. Dempsey, R. Golubic, P. Kelly, Y. Laird, E. McNamara, S. Moore, T.H. de Sa, A.D. Smith, K. Wijndaele, J. Woodcock, S. Brage, Non-occupational physical activity and risk of cardiovascular disease, cancer and mortality outcomes: a dose–response meta-analysis of large prospective studies, *British Journal of Sports Medicine* 57(15) (2023) 979.
- [5] K.E. Powell, A.C. King, D.M. Buchner, W.W. Campbell, L. DiPietro, K.I. Erickson, C.H. Hillman, J.M. Jakicic, K.F. Janz, P.T. Katzmarzyk, W.E. Kraus, R.F. Macko, D.X. Marquez, A. McTiernan, R.R. Pate, L.S. Pescatello, M.C. Whitt-Glover, The Scientific Foundation for the Physical Activity Guidelines for Americans, 2nd Edition, *J Phys Act Health* (2018) 1-11.
- [6] Y. Badawi, F. Maclean, B. Mason, The economic case for investment in walking, 2018.
- [7] R. Brondeel, Y. Kestens, B. Chaix, An evaluation of transport mode shift policies on transport-related physical activity through simulations based on random forests, *International Journal of Behavioral Nutrition and Physical Activity* 14(1) (2017) 143.
- [8] V. Brown, A. Barr, J. Scheurer, A. Magnus, B. Zapata-Diomedes, R. Bentley, Better transport accessibility, better health: a health economic impact assessment study for Melbourne, Australia, *International Journal of Behavioral Nutrition and Physical Activity* 16(1) (2019) 89.
- [9] S.C. Kwan, M. Tainio, J. Woodcock, R. Sutan, J.H. Hashim, The carbon savings and health co-benefits from the introduction of mass rapid transit system in Greater Kuala Lumpur, Malaysia, *Journal of Transport & Health* 6 (2017) 187-200.
- [10] A. Mahendra, L. Rajagopalan, Evaluating health impacts from a bus rapid transit system implementation in India: case study of indore, Madhya Pradesh, *Transportation Research Record* 2531(1) (2015) 121-128.
- [11] C. Morency, M. Trépanier, M. Demers, Walking to transit: an unexpected source of physical activity, *Transport Policy* 18(6) (2011) 800-806.
- [12] C. Rissel, N. Curac, M. Greenaway, A. Bauman, Physical activity associated with public transport use—a review and modelling of potential benefits, *International journal of environmental research and public health* 9(7) (2012) 2454-2478.
- [13] D. Rojas-Rueda, A. de Nazelle, O. Teixido, M.J. Nieuwenhuijsen, Replacing car trips by increasing bike and public transport in the greater Barcelona metropolitan area: a health impact assessment study, *Environment international* 49 (2012) 100-109.

- [14] B. Zapata-Diomedes, L.D. Knibbs, R.S. Ware, K.C. Heesch, M. Tainio, J. Woodcock, J.L. Veerman, A shift from motorised travel to active transport: What are the potential health gains for an Australian city?, *PLoS One* 12(10) (2017) e0184799.
- [15] L. Del Rosario, S.W. Laffan, C.J. Pettit, Physical activity associated with public transport commutes and potential feeder mode shifts, *Journal of Transport & Health* 35 (2024) 101751.
- [16] L. Garcia, R. Johnson, A. Johnson, A. Abbas, R. Goel, L. Tatah, J. Damsere-Derry, E. Kyere-Gyeabour, M. Tainio, T.H. de Sá, Health impacts of changes in travel patterns in Greater Accra Metropolitan Area, Ghana, *Environment international* 155 (2021) 106680.
- [17] B. Chaix, Y. Kestens, S. Duncan, C. Merrien, B. Thierry, B. Pannier, R. Brondeel, A. Lewin, N. Karusisi, C. Perchoux, Active transportation and public transportation use to achieve physical activity recommendations? A combined GPS, accelerometer, and mobility survey study, *International journal of behavioral nutrition and physical activity* 11 (2014) 1-11.
- [18] International Network of Time-Use Epidemiologists (INTUE).  
<https://www.intue.org/about/our-mission/>.
- [19] J. Rabinowitz, Hacking the Map Apps for Active Transportation: “Less walking” vs. “More walking” as a means of optimized movement and mobility, *America Walks*, 2021.
- [20] OpenTripPlanner, Multimodal Trip Planning, 2020. <http://www.opentripplanner.org/>. (2020).
- [21] H.P. Benson, Multi-objective optimization: pareto optimal solutions, propertiesMulti-Objective Optimization: Pareto Optimal Solutions, Properties, in: C.A. Floudas, P.M. Pardalos (Eds.), *Encyclopedia of Optimization*, Springer US, Boston, MA, 2001, pp. 1579-1583.
- [22] C. Bao, L. Xu, E.D. Goodman, L. Cao, A novel non-dominated sorting algorithm for evolutionary multi-objective optimization, *Journal of Computational Science* 23 (2017) 31-43.
- [23] R.A. Wasfi, N.A. Ross, A.M. El-Geneidy, Achieving recommended daily physical activity levels through commuting by public transportation: Unpacking individual and contextual influences, *Health & place* 23 (2013) 18-25.
- [24] R. Patterson, E. Webb, C. Millett, A.A. Lavery, Physical activity accrued as part of public transport use in England, *Journal of public health* 41(2) (2019) 222-230.
- [25] M. Ketokivi, T. Choi, Renaissance of case research as a scientific method, *Journal of Operations Management* 32(5) (2014) 232-240.
- [26] R. Shields, E.J. Gomes da Silva, T. Lima e Lima, N. Osorio, Walkability: a review of trends, *Journal of Urbanism: International Research on Placemaking and Urban Sustainability* 16(1) (2023) 19-41.
- [27] M. Lee, S. Kim, H. Kim, S. Hwang, Pedestrian visual satisfaction and dissatisfaction toward physical components of the walking environment based on types, characteristics, and combinations, *Building and Environment* 244 (2023) 110776.