

Percutaneous Coronary Intervention versus Optimal Medical Therapy on Quality of Life and Functional Capacity in Chronic Coronary Syndrome: A Meta-Analysis of Randomized Controlled Trials

Running Title: Percutaneous Coronary Intervention versus Optimal Medical Therapy: A Quality of Life and Functional Capacity Assessment.

Sammudeen Ibrahim, MD¹; Saint-Martin Allihien, MD¹; Basilio Addo, MD¹; Haifz Sulemana, MD²; Jan Camille L. Ozaeta, MD¹; Abdul-Fatawu Osman³; Kwasi Asamoah Opare-Addo¹; Samuel Dadzie¹; Shreyas Singireddy, MD⁴; Onoriode Kesiena, MD⁵; Sheriff N. Doodoo, MD⁶; Vedang Bhavsar, MD FACC⁶

1. Department of Internal Medicine, Piedmont Athens Regional Medical Center, 1270 Prince Ave Athens, GA 30606, U.S.A.
2. Department of Pediatrics, Tamale Teaching Hospital, Tamale, Ghana
3. Department of Cardiovascular Medicine, Creighton University School of Medicine—Phoenix, 3100 N. Central Ave, Phoenix, AZ. 85012, U.S.A.
4. Department of Cardiology, University of Illinois Peoria
5. Department of Cardiology, Maine Medical Center, Portland, Maine
6. Georgia Heart Institute, Northeast Georgia Medical Center, 743 Spring Street NE, Gainesville, GA 30501, U.S.A.

Address of Correspondence:

Sammudeen Ibrahim, MD

Piedmont Athens Regional

1270 Prince Avenue

Athens, GA 30606

United States of America

Phone Number: 706-612-0421

Email: Sahnudeen6@gmail.com

Disclosures:

Keywords: Angina Frequency, Chronic Coronary Syndrome, Coronary Artery Disease Freedom from Angina, Functional Capacity, Optimal Medical Therapy, Percutaneous Coronary Intervention, Quality of Life

ABSTRACT

Background

Previous studies have primarily examined the impact of percutaneous coronary intervention (PCI) compared to optimal medical therapy (OMT) on hard outcomes such as all-cause mortality, cardiovascular death, nonfatal myocardial infarction, and the need for revascularization in patients with chronic coronary syndrome (CCS). However, these studies have not yielded significant findings thus far.

Objective

The goal of this meta-analysis was to assess the effect of PCI plus OMT on quality of life (QoL), functional capacity (FC), and angina-related health status compared to OMT alone in patients with CCS.

Method

Cochrane Central Registry of Controlled Trials, PubMed, Embase, and clinicaltrials.gov were searched for studies published up to December 2023. The outcomes of interest were quality of life (QoL), freedom from angina (FFA), angina frequency (AF), and functional capacity (FC) measured with Seattle Angina Questionnaire (SAQ) or its equivalents such as EuroQoL-5D (EQ-5D), 36-Item Short Form (SF-36) or RAND-36, and psychological well-being score if none is available. Additionally, the Duke Activity Status Index was also used to assess functional capacity when reported. Fixed-effect model was used for data analysis if I^2 statistics <50%; otherwise, the random-effect model was used. Sensitivity analysis was performed by using the leave-one-out meta-analysis which alternatively removes a trial from the study to assess its impact on the result as well as the interconversion between fixed-effects and random-effects models. A meta-regression analysis was also performed to evaluate the impact of covariates on QoL. Cochrane Risk of Bias Assessment Tool was used to assess the risk of bias.

Results:

Seventeen randomized controlled trials that enrolled 13,588 patients satisfied our inclusion and exclusion criteria with an average age of 62.3 ± 10 years. PCI plus OMT improved QoL with standardized mean difference (SMD) of 0.27 ([95% CI, 0.14-0.40]; $P < 0.001$) and 0.21 ([95% CI, 0.12-0.30]; $P < 0.001$) when compared to OMT alone at 6 months and 1 year respectively. PCI plus OMT was also associated with significant improvement in FFA (1.17 [95% CI, 1.11-1.24]; $P < 0.001$),

AF (0.25 [95% CI, 0.20-0.30]; P <0.001), and FC (0.21 [95% CI, 0.12-0.31]; P <0.001) at 6 months and persisted at 3 years (QoL [0.18 [95% CI, 0.06-0.30]; P < 0.001], FFA [1.27 [95% CI, 1.11-1.45]; P < 0.001], AF [0.09 [95% CI, 0.02-0.16]; P = 0.009], FC [0.13 [95% CI, 0.02-0.23]; P = 0.02] respectively) . However, there appears to be a reduction in this effect with time. Meta-regression analysis using year of publication as covariate on QoL was performed. There was no statistically significant relationship between the year of publication and QoL at 1 year (P = 0.81).

Conclusion:

In this meta-analysis, PCI combined with OMT was associated with better quality of life, greater freedom from angina, reduction in angina frequency, and improved functional capacity compared to OMT alone. These benefits persisted when followed longitudinally for 3 years. However, longer-term outcome data of these trials is needed to determine whether these improvements in quality of life are sustained or attenuated over time.

INTRODUCTION

Coronary artery disease (CAD) is the leading cause of death globally, accounting for 32% of global deaths in 2019¹. The Center for Disease Control (CDC) reported that in the United States (US), 1 person dies from cardiovascular disease every 33 seconds². CAD is therefore undeniably a matter of significant public health concern due to its widespread prevalence, substantial impact on morbidity and mortality, and considerable economic burden on healthcare systems globally³. Chronic coronary syndrome (CCS) represents a critical component of the CAD spectrum, characterized by a variable clinical course that may include chronic progression associated with periods of stability interspersed with unpredictable episodes of instability³. Although the benefit of percutaneous coronary intervention (PCI) in patients with acute coronary syndrome (ACS) on hard outcomes including all-cause death, cardiovascular death, and myocardial infarction has been well established, large randomized controlled trials (RCTs) found no benefit when compared to optimal medical therapy (OMT) in patients with CCS^{4,5}. Thus the primary objective in managing patients with CCS has revolved around halting disease progression and enhancing patients' overall health status which encompasses improving quality of life (QoL), functional capacity (FC), and addressing symptoms such as angina^{6,7}. By pursuing these goals, healthcare providers may not only extend patients' lifespan but also ensure that they can lead fulfilling and productive lives despite their condition.

The American Heart Association (AHA) recently recommended evaluating patient-reported QoL in patients with CCS⁸. Additionally, a recent study by Spertus et al., reported that invasive treatment strategies were associated with a significant improvement in quality of life compared to OMT alone⁹. Furthermore, a patient-level pooled analysis from the FAME 1 and 2 trials showed that PCI plus OMT was associated with improved quality of life in patients with higher angina class¹⁰. Conversely, Al-Lamee and her colleagues reported no difference in quality of life when PCI plus OMT was compared to OMT plus sham procedure¹¹. While the role of PCI in improving prognosis compared to OMT for patients with CCS remains a topic of debate, guidelines support its use to alleviate chronic angina and its overall impact on QoL that are not adequately managed with medical therapy alone^{12,13}. As treatment options for CCS evolve, the primary therapeutic choices remain OMT alone or PCI combined with OMT¹⁴.

This systematic review and meta-analysis aimed to compare PCI plus OMT to OMT alone in patients with CCS. We evaluated both treatment strategies based on the QoL, angina frequency (AF), freedom from angina (FFA), and FC.

2 METHODS

This meta-analysis complied with the guidelines of Preferred Reporting Items for Systematic Reviews and Meta-analyses (PRISMA)¹⁵ and the Cochrane protocol¹⁶. Additionally, the study was registered under the International Prospective Register of Systematic Reviews (PROSPERO)¹⁷ with registration number ([CRD42024558472](#)). This study was exempted from institutional review board approval and informed consent of participants as the included studies were all publicly available, and their clinical data were de-identified in the individual trials ensuring compliance with ethical standards while conducting research involving human subjects.

2.1 Data Sources and Query Strategy

A comprehensive search was conducted across multiple databases, including PubMed, Cochrane Central Registry of Controlled Trials, Embase, and clinicalTrials.gov, to identify all relevant studies published up to December 2023. These trials assessed QoL, FFA, AF, and FC. The study evaluated validated measures such as the Short Form (SF)-36, RAND-36, Seattle Angina Questionnaire (SAQ), and Duke Activity Status Index (DASI)¹⁸⁻²¹. The quality of life was assessed using the SAQ, EuroQol-5D (EQ-5D), 36-Item Short Form (SF-36) or RAND-36, and psychological well-being score based on what the individual trial reported. The Duke Activity Status Index was used to assess functional capacity when reported. The SAQ evaluates four dimensions of angina-related quality of life: anginal symptom frequency, physical function/limitations, angina-specific quality of life, and treatment satisfaction. Additionally, the EQ-5D 0 to 100 visual analog scale was used to assess self-rated global health. The Duke Activity Status Index (DASI) to assess cardiac functional status, and the RAND General Health survey was used to obtain an overall health ordinal rating. These measures collectively provide a comprehensive understanding of patients' well-being and functional status in the context of CCS. The comprehensive search protocol is available in [Table S1 in Supplemental Material](#) for detailed reference.

2.2 Study Selection

Two authors (SI and SA) independently screened all studies identified through the literature search, adhering strictly to predefined eligibility criteria derived from both inclusion and exclusion criteria. Any discrepancies between the two authors were resolved by a third author (OA). Ultimately, 17 RCTs that met the eligibility criteria were included in the final evaluation.

Eligible studies for inclusion comprised RCTs involving adult participants aged 18 years and above. These trials compared PCI plus OMT to OMT alone. We also included three-arm RCTs that compared PCI plus OMT versus OMT alone versus CABG in which the three comparative groups were clearly delineated and reported at least one outcome measures of interest. Exclusion criteria comprised studies lacking sufficient statistical data for comparison between the two treatment groups, those examining only one treatment modality, investigations conducted on non-human subjects, and ongoing trials lacking relevant published data. Additionally, case reports, reviews, editorials, commentaries, and conference abstracts were also excluded from the analysis.

2.3 Data Extraction

After identifying and removing all duplicated data, the relevant studies were exported to the Endnote Reference Manager (version x5: Clarivate Analytics). The prespecified variables from the selected studies were then incorporated into a dataset. This process was independently verified by another author (SND).

Study characteristics, including the first author, publication year, study design, sample size, patient population, key inclusion and exclusion criteria, and year of publication, were extracted. Additionally, baseline characteristics such as age, sex, race, LDL, medical therapy used, statin use, stent use, and comorbidities were extracted. The clinical endpoints of interest including QoL, FFA, AF, and FC were also extracted from the selected studies. These have been summarized in

Table 1.

2.4 Included Studies and Quality Assessment

The PRISMA flow diagram depicting the selection process for studies included in the final analysis is presented in [Figure S1 in Supplemental Material](#). A total of 17 RCTs^{4,5,11,22-39}. [Table 1](#) outlines the characteristics of these studies, while their quality assessment is depicted in [Figure S2 in Supplemental Materials](#). The quality of the included studies was independently assessed by two authors (SI and SND) using the modified Cochrane Collaboration's risk of bias tool for RCTs⁴⁰. Additionally, publication bias was evaluated through visual inspection and funnel plot analysis, conducted independently by the same authors (SI and SND).

2.5 Statistical Analysis

All the statistical analyses were conducted using Review Manager (version 5.4.1; Copenhagen: The Nordic Cochrane Center, the Cochrane Collaboration, 2014) and Open Meta-Analyst. Mantel-Haenszel Summary statistics were presented using odds ratios (ORs) with corresponding 95% confidence intervals (CIs) for categorical variables. For continuous variables, standardized mean differences (SMDs) with 95% CIs were utilized. To assess heterogeneity between study protocols, Cochran's Q and I^2 statistics were employed. Heterogeneity was considered significant at a P value < 0.05 and an I^2 value exceeding 50%. Depending on the degree of heterogeneity observed, either a fixed-effect model or a random-effect model was utilized to derive the pooled effect estimate.

To evaluate the robustness of the results of the meta-analysis, sensitivity analyses were performed using the leave-one-out analysis by systematically removing one trial at a time from the pool. This analysis allowed for an assessment of the impact of each individual trial on the overall result. Finally, sensitivity analysis was also conducted by interconversion between fixed-effects and random-effects models.

Analyses were stratified based on the use of fractional flow reserve (FFR) assessment prior to intervention and the inclusion of chronic total occlusions (CTOs) in culprit vessels in the studies. This stratification aimed to evaluate their impact on outcomes. We estimated the difference between the estimates of these subgroups using a test for interaction. Additionally, a meta-regression analysis was conducted to examine the relationship between the year of

trial publication and QoL. This analysis was performed to determine whether the results differ in more recent trials in the setting of contemporary therapy modalities.

Table 1: Study and Baseline Characteristics of Included Studies

Study Characteristics																	
Study Name	ACME 1	ACME 2	ALKK	AVERT	BARI 2D	COMET-CTO	COURAGE	DEFER	EUROCTO	FAME 2	GZFFR	ISCHEMIA	MAS S 1	MASS 2	ORBITA	RITA 2	TIME
Year	1992	1997	2003	1999	2009	2021	2007	2001	2018	2014	2020	2020	1995	2004	2018	1997	2004
Design	Prospective, randomized, open-label trial	Prospective, randomized, open-label trial	Open-label, multicenter, randomized, trial	Open-label, multicenter, randomized, trial	Open-label, multicenter, randomized, trial	Prospective, multicenter, randomized, open-label trial	Open-label, multicenter, randomized, trial	Multicenter, open-label, randomized trial	Prospective, randomized, multicenter, open-label controlled trial	Open-label, randomized, multicenter trial	Randomized, single center, open-label trial	Multicenter, prospective, randomized, open-label trial	Prospective, randomized, single center, open-label trial	Prospective, randomized, single center, open-label trial	Multicenter, randomized, sham-controlled, trial	Prospective, randomized, multicenter, open-label trial	Randomized, multicenter, open-label trial
Medical Therapy Description	Aspirin, BB, CCB, Nitrites	Aspirin, BB, CCB, Nitrites	BB, CCB, Nitrate	Statin	Aspirin, ARB/A CEi BB, CCB, Insulin, Nitrate, Statin,	Antiplatelet, Antianginal, Statin	Antiplatelet, ARB/A CEi, BB, CCB, Nitrate, Statin, Ezetimibe	BB, Nitrites, Statin	Antiplatelet, ACEi, Antianginals	Antiplatelet, ACEi, BB, Antidiabetics	Antianginals, Statins	Antiplatelet, Antianginals, Statin	Aspirin, BB, Nitrites	Aspirin, ACEi, BB, CCB, Nitrate, Statin	Antianginal, DAPT, Statin	Aspirin, BB, CCB, Nitates, LLD	Antianginals, Antiplatelet, LLD
Key Inclusion Criteria	Patients with required to have stable angina pectoris, a markedly positive exercise treadmill test result, or a documented	Patients with history of angina, recent MI, or significant ST depression; $\geq 70\%$ stenosis in the proximal two-	Stable patients 8-42 days after a STEMI, or significant stenosis or CTO of the infarct-related artery, and the	Patients with $\geq 50\%$ stenosis in at least one coronary artery undergoin g PCI, asymptomatic or mild angina (CCS I or II), stress test completion	Patients with $\geq 50\%$ stenosis of a major coronary artery with a positive stress test, or $\geq 70\%$ stenosis with classic angina, and type 2 diabetes mellitus.	Patients with stable angina pectoris and/or objective proof of myocardial ischemia and/or proof of myocardial viability in the territory of CTO	Patients with $\geq 70\%$ stenosis in at least one proximal artery, inducible ischemia on stress testing, or ST depression or T-wave inversion on resting EKG.	Patients with $>50\%$ stenosis in a native coronary artery and FFR ≥ 0.75 , with out evidence of reversible ischemia on	Symptomatic patients with at least one CTO for at least 3 months duration, in a major coronary artery with a vessel diam	Patients with stable angina (CCS I-III), or stabilized CCS Class IV angina after medical management for at least 7 days, or atypical chest pain with documented silent ischemia on	Patients with untr eated obstructive coronary disease in another artery with a diameter of ≥ 2 mm.	Patients with moderate to severe ischemia with eGFR ≥ 30 .	Patients with single vessel coronary disease characterized by $\geq 80\%$ stenosis in the LAD artery before the first diago	Patients with $\geq 70\%$ stenosis in multiple proximal coronary arteries and documented ischemia on stress testing or moderate angina (CCS II or III).	Patients with angina or similar symptoms and at least one coronary artery stenosis $\geq 70\%$ in a single vessel deemed suitable for PCI.	Patients with $\geq 50\%$ stenosis in at least one major artery for percutaneous transluminal coronary angioplasty (PTCA), who have experienced unstable angina within the	Patients aged 75 years or older referred to Swiss centers for evaluation of chest pain refractor to at least two antianginal medications.

	myocardial infarction within the previous 3 months. Diameter vessel stenosis > 70% in the proximal 2/3 of a single coronary artery.	thirds of one or two coronary arteries (single-vessel CAD data from ACM E-1).	infarct vessel clearly identifiable.	without ischemia, LDL ≥ 115 mg/dL, and triglycerides <500 mg/dL.				noninvasive testing in the past 2 months.	arter of at least 2.5 mm	noninvasive testing. These patients must have at least 50% stenosis in one major native coronary artery (≥ 2.5 mm diameter) supplying viable myocardium.							last 7 days prior to randomization.	
Key Exclusion Criteria	NR	Patients with medically refractory unstable angina, previous PCI, non-CAD cardiac diagnosis, $\geq 50\%$ left main stenosis, 3-vessel CAD, LVEF $\leq 30\%$.	CCS class III or IV, stenosis >70% in another coronary artery, a recent MI (within 2 weeks), or LVEF <40% indication for CABG surgery or a noncardiac disease reducing life expectancy of the	Patients with left main disease, 3-vessel CAD, unstable angina, recent MI (within 2 weeks), or LVEF <40%.	Patients needing immediate revascularization, left main disease, creatinine >2 mg/dL, HbA1c >13%, Class III or IV heart failure, hepatic dysfunction, or recent PCI/CABG (within 12 months).	Patients with significant stenosis in the non-CTO coronary artery, MI in the previous 90 days, contraindications for DAPT, CTO of the bypass graft, LVEF 25%, cerebrovascular insult or TIA in the last 6 months, advanced renal failure	Patients with severe CCS Class IV angina, significant ST depression or hypotension during Bruce protocol stage I stress testing, refractory heart failure or cardiogenic shock, LVEF <30%, recent revascularization within the past 6 months, or	Patients with CTO of the target artery, Q-wave infarction, unstable angina, or small target arteries.	Patients who will not tolerate DAPT or need for elective non-cardiac surgery within 6 months.	Patients who are candidates for CABG due to left main coronary artery disease needing revascularization, recent (within one week) STEMI or NSTEMI, prior CABG, contraindication to dual antiplatelet therapy, LVEF <30%, and severe	Patients with either stable angina or residual non-culprit disease after NSTEMI or STEMI following treatment of the culprit vessel	Patients with EF <35%, known unpruned left main disease, NYHA Class III-IV heart failure, persistent severe angina despite maximal medical therapy, recent ACS with	Patients with CTO, long lesions (>12 mm), ostial involvement, extensive calcification, twisting of arteries, left main artery disease, congenital heart disease, prior valvular surgery, LVEF <40%, history of PCI or CABG, single-vessel coronary disease, unstable angina, prior heart attack, significant heart	Patients with acute MI requiring urgent revascularization, ventricular aneurysm requiring surgery, LVEF <40%, history of PCI or CABG, severe coronary disease, congenital heart disease, valvular disease, severe left ventricular dysfunction, moderate-to-severe	Patients with $\geq 50\%$ stenosis in a non-target coronary artery, ACS, history of CABG surgery, left main CAD, contraindications to drug-eluting stents, CTO, severe valvular disease, severe left ventricular dysfunction, moderate-to-severe	Revascularization for symptom relief or prognosis, prior revascularization, significant left main disease, recent ACS, hemodynamically significant valve disease, or life-threatening non-cardiac illness.	Patients with recent acute MI (<10 days), concurrent valvular or other heart diseases, congestive heart failure, severe comorbidities (e.g., cancer, advanced renal failure), and inability to	

			patient.				coronary anatomy unsuitable for PCI.			left ventricular hypertrophy.		in the past 2 months, or recent PCI/CABG within the past 2 months.	valve issues, heart muscle disease, impaired left ventricular function, and history of heart artery procedures like PCI or CABG.	thy, left main artery stenosis ≥50%, inability to comply with protocol or follow-up, and suspected or confirmed pregnancy.	pulmonary hypertension, life expectancy less than 2 years, and inability to provide consent.		optimize medical therapy.
--	--	--	----------	--	--	--	--------------------------------------	--	--	-------------------------------	--	--	--	--	--	--	---------------------------

Baseline Characteristics

Sample Size	212	101	300	341	2368	100	2287	181	396	888	104	5179	214	611	200	518	301
Age, y	63	60	58	58	62	62	62	61	65	64	61	64	56	60	66	58	80
Follow-up	3 y	5 y	4.7 y	1.5 y	5 y	1 y	4.6 y	5 y	3 y	5 y	1 y	3.3 y	5 y	5 y	12 w	7 y	4 y
Mean LDL, mg/dL	106	NR	NR	144	96	NR	144	NR	NR	NR	NR	83	151	148	NR	NR	NR
Baseline Angina																	
Statin Use > 50% in OMT Group	No	No	No	Yes	Yes	Yes	Yes	No	Yes	Yes	Yes	Yes	No	Yes	Yes	No	No
Stent use > 50% in PCI Group	No	No	No	No	Yes	Yes	No	No	Yes	Yes	Yes	Yes	No	Yes	Yes	No	Yes

Comorbidities

Hypertension, %	53	NR	39	45	52	86	67	37	72	78	72	73	36	58	69	NR	NR
Diabetes, %	18	NR	39	16	100	32	34	12	30	27	23	42	18	30	18	NR	NR
CHF	2	NR	16	NR	NR		5	NR	NR	NR	NR	4	NR	NR	NR	NR	NR

Current Smoker, %	31	NR	60	22	22	33	NR	26	70	20	33	12	36	30	13	NR	NR
Clinical Endpoints																	
Quality of Life	N	N	N	N	Y	Y	Y	N	Y	Y	Y	Y	N	Y	Y	Y	Y
Freedom from Angina	Y	Y	Y	Y	N	N	Y	Y	N	Y	N	N	Y	Y	N	N	N
Angina Frequency	N	N	N	N	N	Y	Y	N	Y	Y	Y	Y	N	N	Y	N	N
Functional Capacity	Y	N	N	N	Y	Y	Y	N	Y	N	Y	Y	N	Y	Y	Y	Y

Y = Yes; N = No

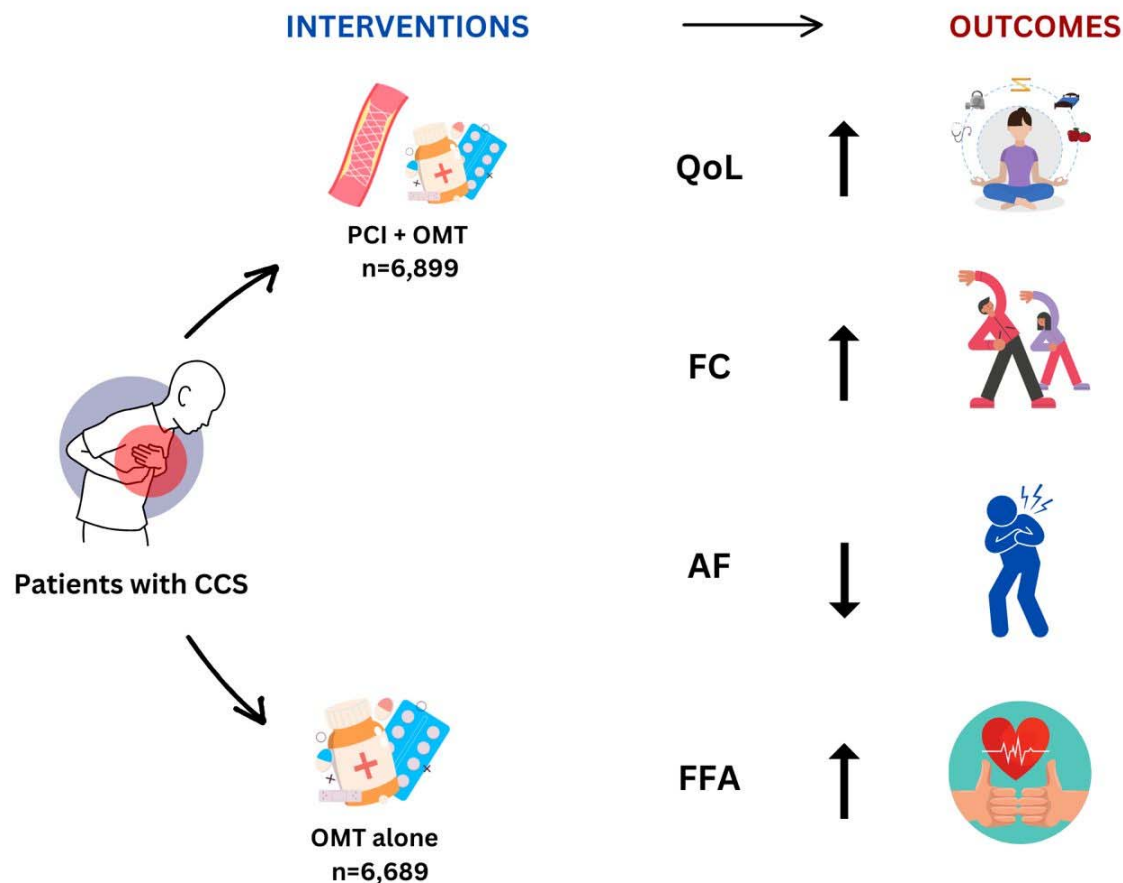
3. RESULTS

3.1 Characteristics of Study Participants

Seventeen RCTs including 13,588 patients were selected for the final analysis, with 6,899 in the PCI plus OMT arm and 6,689 in the OMT alone arm. All of the 17 RCTs were published between 1992 and 2022. The baseline characteristics of the participants of included RCTs and study inclusion/exclusion as well as clinical endpoints are reported in are summarized in [Table 1](#). The included RCTs showed minimal publication bias, as depicted by the symmetrical funnel plot shown in supplemental material [Figure S3](#). The included studies were all of sufficient quality as evident on the risk of bias assessment shown in supplemental material [Figure S2](#).

3.2 Outcomes

Percutaneous Coronary Intervention versus Optimal Medical Therapy: A Quality of Life and Functional Capacity Assessment



Abbreviations: CCS- chronic coronary syndrome, PCI - percutaneous coronary intervention, OMT - optimal medical therapy, QoL - quality of life, FC - functional capacity, AF - angina frequency, FFA - freedom from angina

Central Illustration Summarizing Study and the Outcomes of Interest

3.2.1 Quality of Life

Overall, 11 RCTs assessed QoL outcomes which comprised of 10,465 participants, with 5,346 in the PCI arm and 5,119 in the OMT arm. PCI was associated with improved quality of life when compared to OMT (SMD = 0.27 [95% CI, 0.14-0.40]);

P <0.001), (SMD = 0.21 [95% CI, 0.12-0.30]; P <0.001), and (SMD = 0.18 [95% CI, 0.06-0.30]; P = 0.004) at 6 months, 1 year, and 3 or more years respectively. The results of the meta-analysis are shown in [Figure 1.1](#).

3.2.2 Freedom from Angina

A total of 9 RCTs reported on the effect of PCI compared to OMT on FFA including 4,787 participants with 2,408 and 2,379 in the PCI and OMT groups respectively. We study found that PCI was associated with significant increases in FFA when compared to OMT at 6 months (OR = 1.17 [95% CI, 1.11-1.24]; P < 0.001), 1 year (OR = 1.14 [95% CI, 1.09-1.19]; P <0.001), and 3 year or more (OR = 1.27 [95% CI, 1.11-1.45]; P = 0.004). The results of the meta-analysis are shown in [Figure 1.2](#).

3.2.3 Angina Frequency

Five RCTs evaluated the effects of PCI on AF when compared to angina frequency. This included a total of 6,546 patients with 3,297 in the PCI arm and 3,249 in the OMT arm. The effect estimate demonstrated a significant reduction in AF in favor of PCI at 6 months (SMD = 0.25 [95% CI, 0.20-0.30]; P <0.001), 1 year (SMD = 0.21 [95% CI, 0.17-0.26]; P < 0.001), and 3 or more years (SMD = 0.09 [95% CI, 0.02-0.16]; P = 0.009). The results of the meta-analysis are shown in [Figure 1.3](#).

3.2.4 Functional Capacity

Overall, 11 RCTs assessed FC including 9,796 participants with 4,959 in the PCI arm and 4,837 in the OMT arm. PCI was associated with a statistically significant improvement in FC when compared to OMT (SMD = 0.21 [95% CI, 0.12-0.31]; P < 0.001), (SMD = 0.12 [95% CI, 0.08-0.16]; P < 0.001), and (SMD = 0.13 [95% CI, 0.02-0.23]; P = 0.02) at 6 months, 1 year, and 3 or more years respectively. The results of the meta-analysis are shown in [Figure 1.4](#).

3.3 Sensitivity Analysis

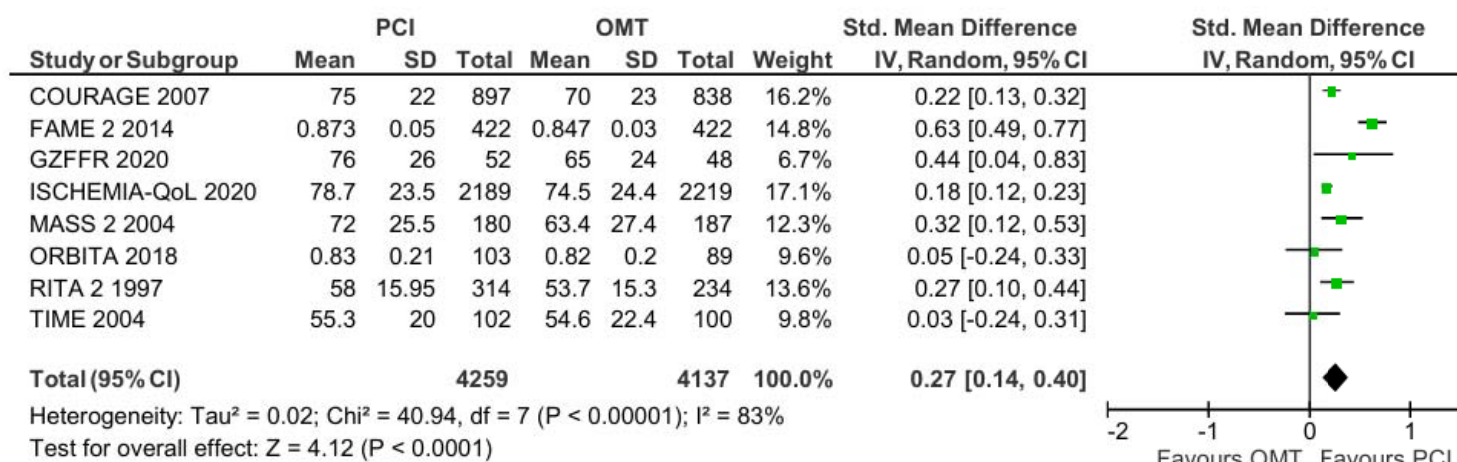
A sensitivity analysis was conducted using the leave-one-out method, where one trial was systematically removed from the pool at a time. This analysis allowed for an assessment of the impact of each individual trial on the overall results, identifying any single study that may disproportionately influence the pooled effect estimate. Additionally, sensitivity

was further assessed by comparing the results obtained using both fixed-effects and random-effects models, allowing us to evaluate the robustness of the findings under different statistical assumptions. See Supplementary material figure S4.

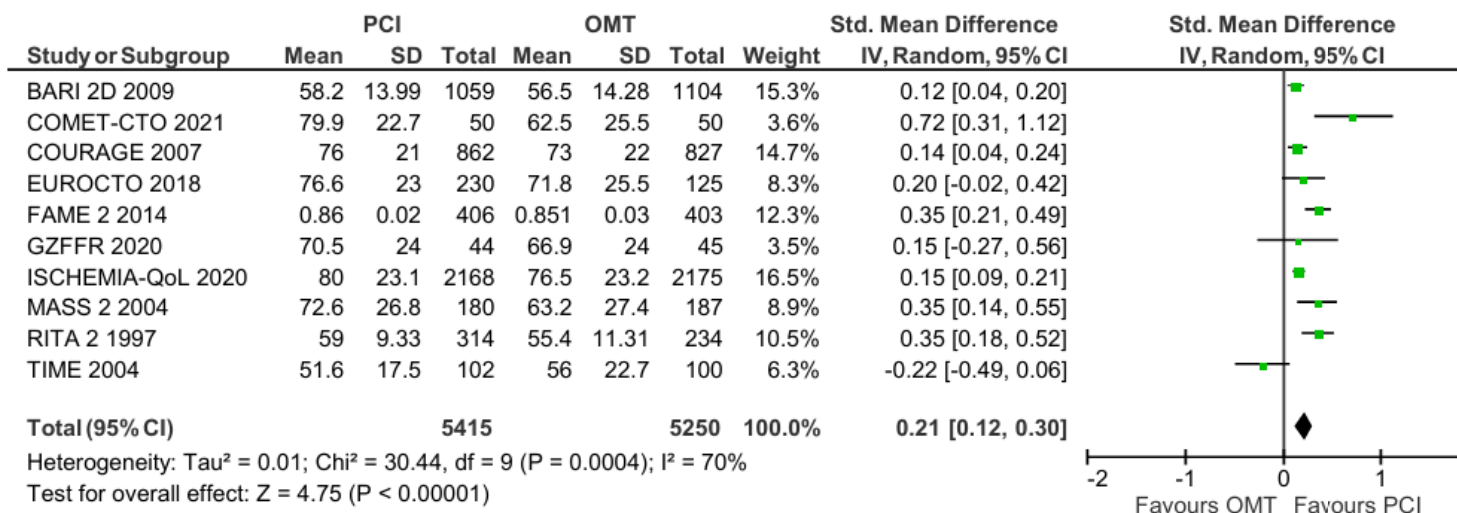
Figure 1 Showing the Forest Plot of Outcomes Comparing PCI plus OMT to OMT alone.

Figure 1.1 Quality of Life Assessment

A PCI vs OMT at 6 months



B PCI vs OMT at 1 year



C PCI vs OMT at 3 years

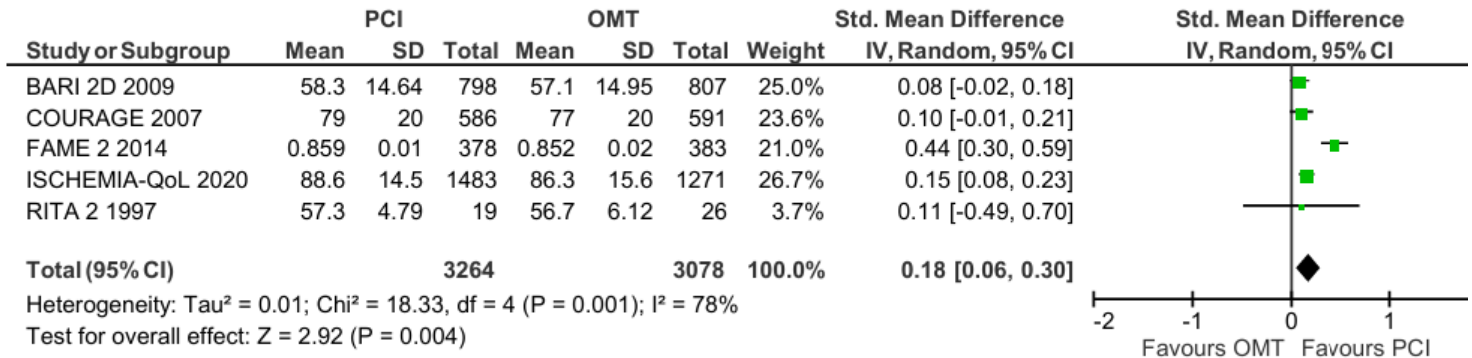
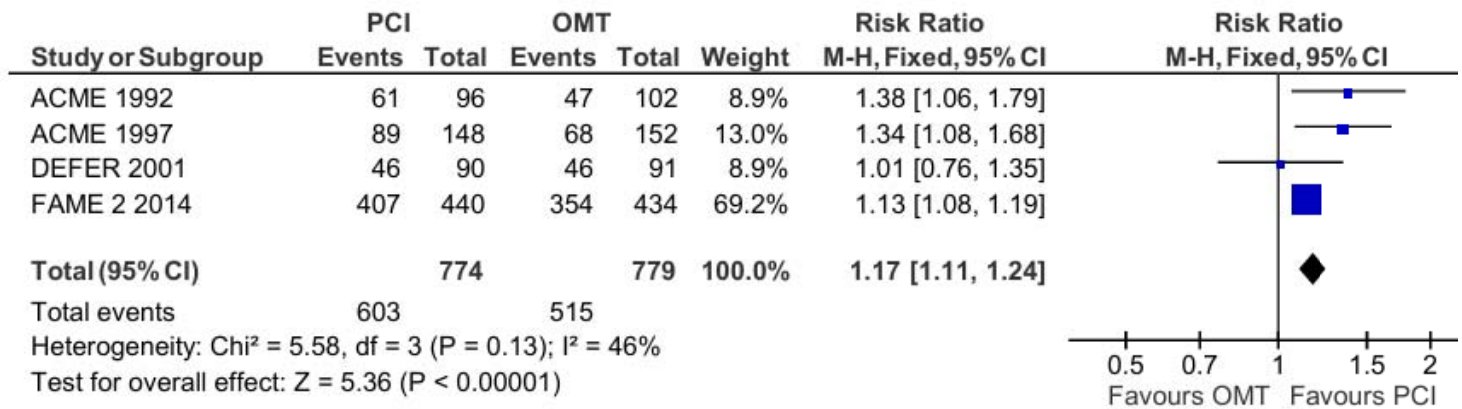
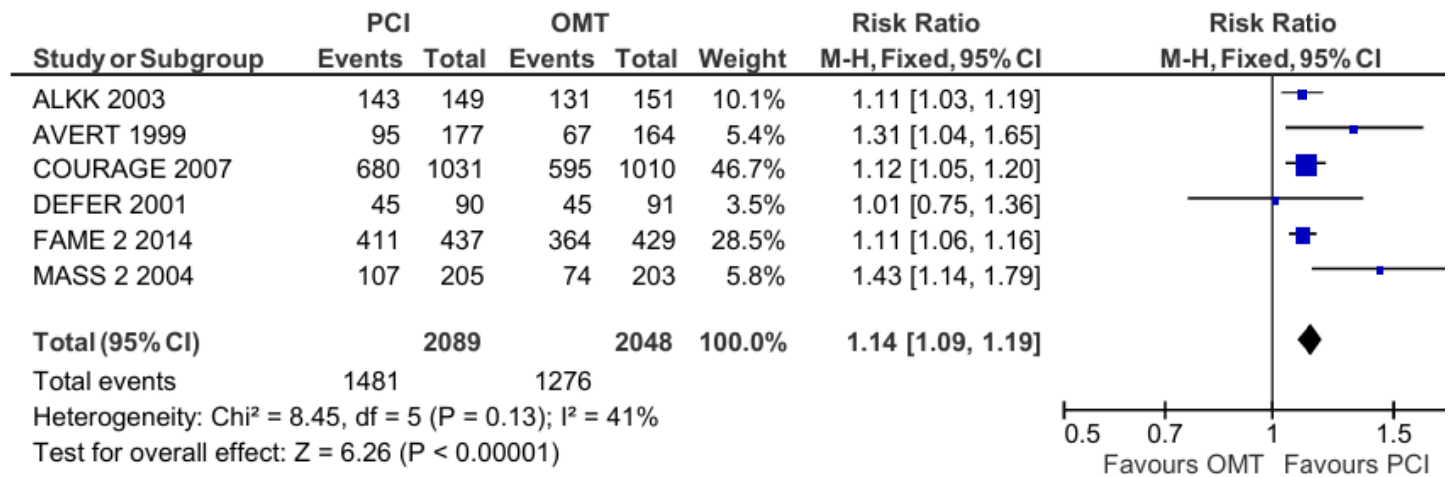


Figure 1.2 Freedom from Angina

A PCI vs OMT at 6 months



B PCI vs OMT at 1 year



C PCI vs OMT at 3 years

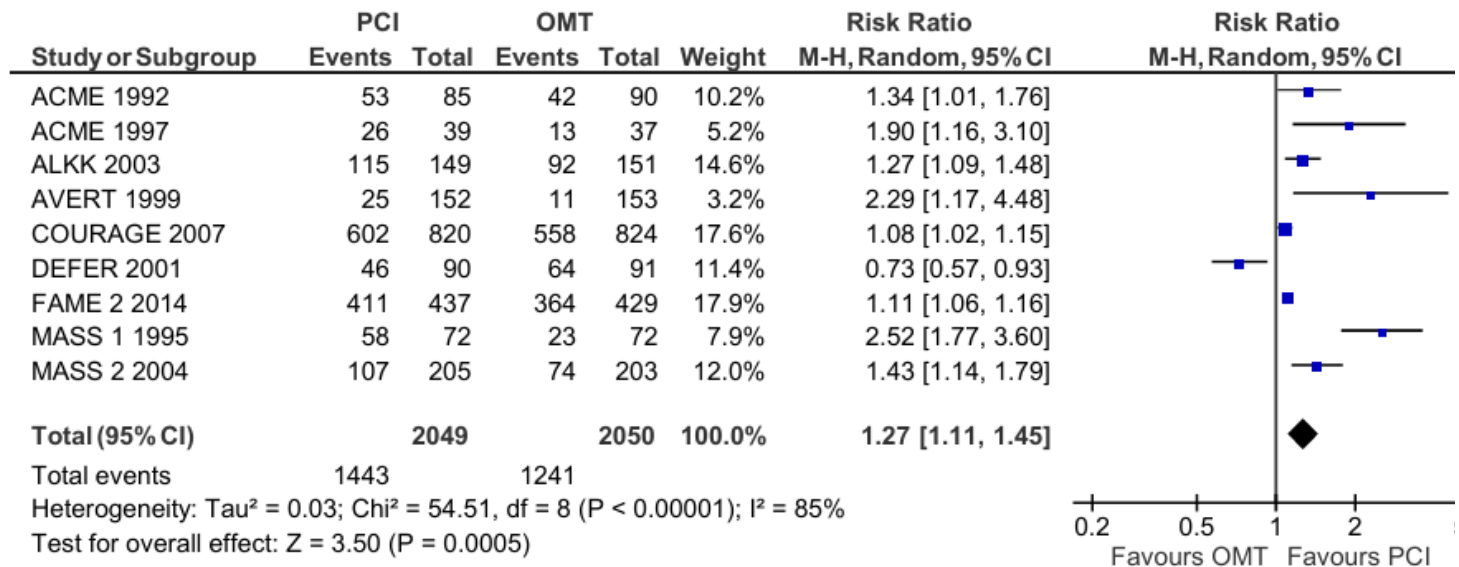
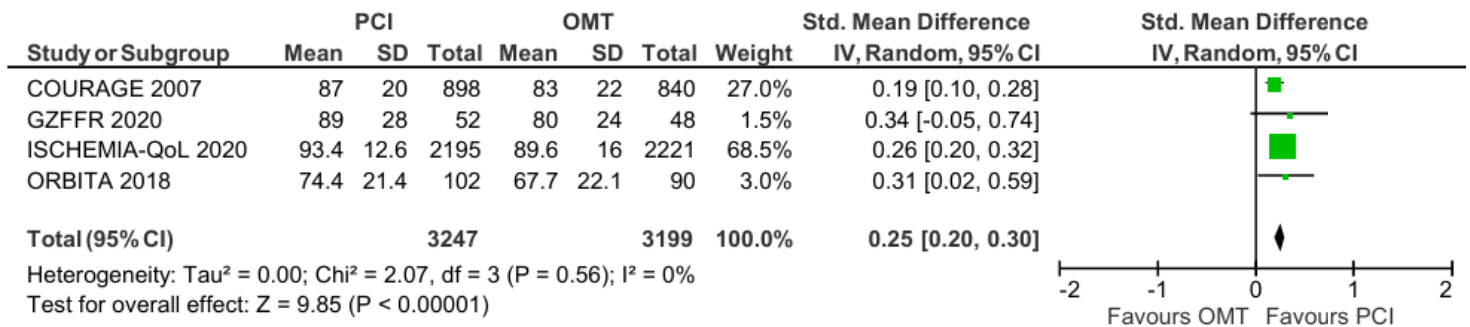
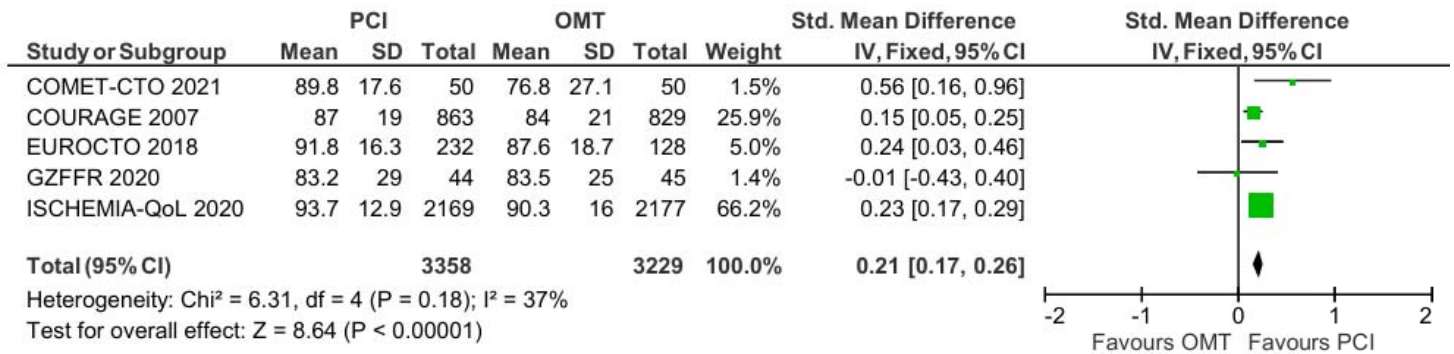


Figure 1.3 Angina Frequency

A PCI vs OMT at 6 months



B PCI vs OMT at 1 year



C PCI vs OMT at 3 years

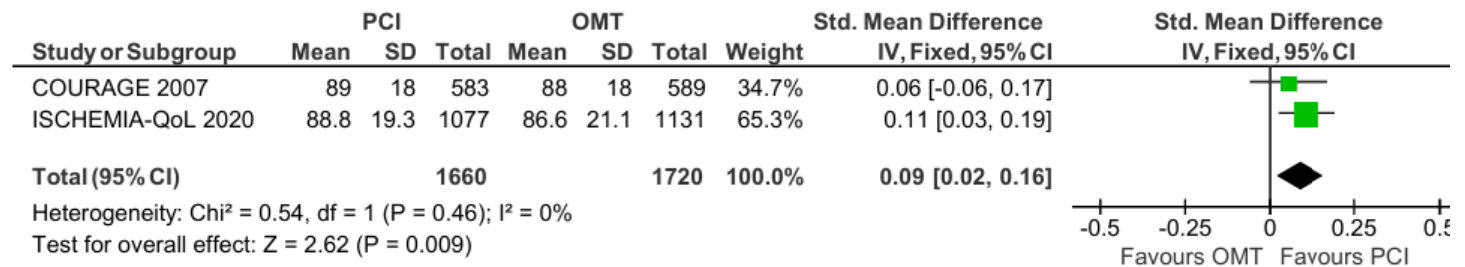
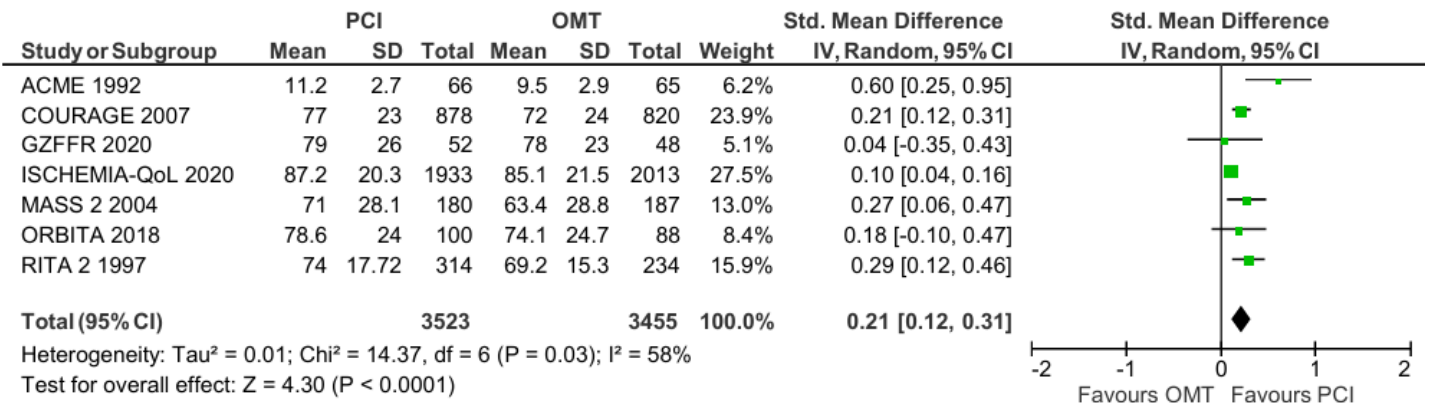
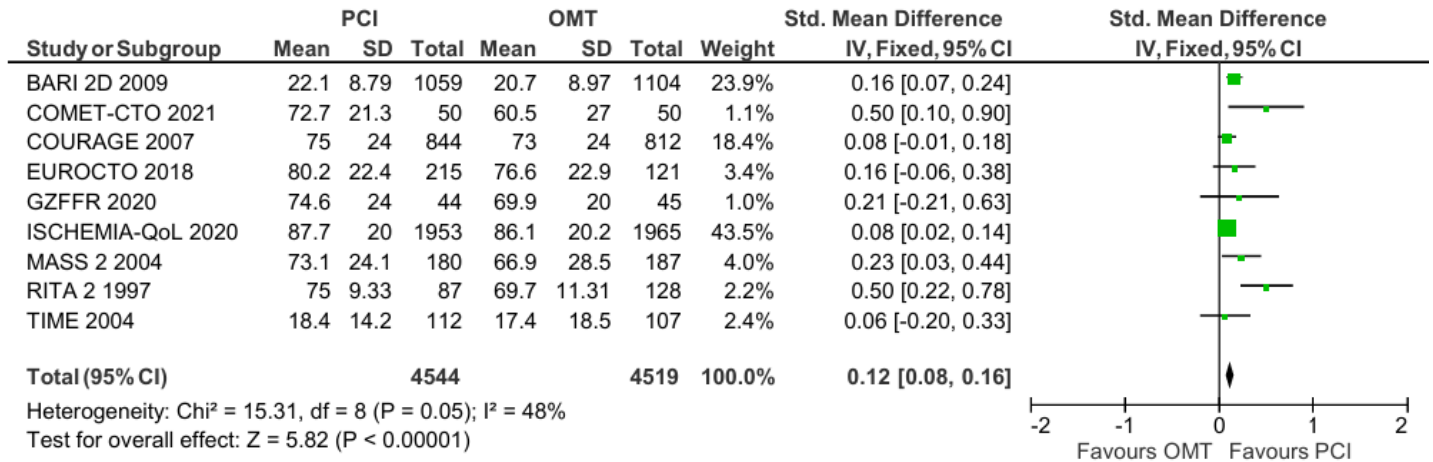


Figure 1.4 Functional Capacity

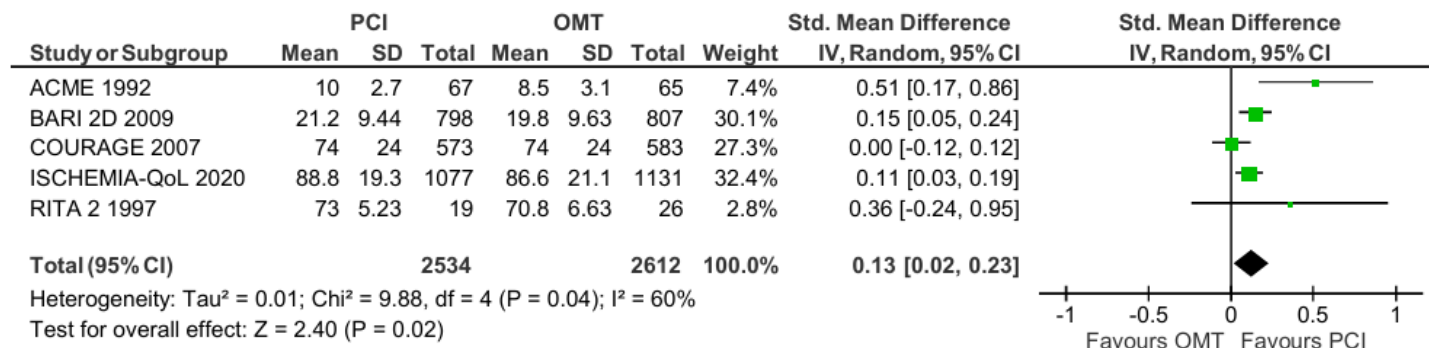
A PCI vs OMT at 6 months



B PCI vs OMT at 1 year



C PCI vs OMT at 3 years



3.4 Meta-regression Analysis

Meta-regression analyses were performed to investigate the relationship between the year of trial publication and the QoL outcomes over time. The results indicated no statistically significant association between the year of publication and QoL improvements, with a P value of 0.81. See Supplementary material figure S5.

DISCUSSION

In this present meta-analysis of RCTs comparing PCI to OMT, we report several significant findings:

1. PCI was associated with improved QoL in patients with chronic coronary syndrome and persisted over 3 years.
2. FC, FFA, and AF were significantly improved by PCI when compared to OMT.
3. The effect of PCI on QoL, FC, FFA, and AF appears attenuated over time.

Numerous previous studies have indicated that in patients with CCS, PCI is not associated with a reduction in major adverse clinical events including death, recurrent myocardial infarction, and need for new revascularization procedures when compared to OMT^{4,30,41,42}. Assessing soft outcomes including quality of life, functional capacity, angina-related health status has, therefore, gained significance in managing patients with CCS, a chronic condition known to impact quality of life and functional capacity^{43,44}. Patient-reported outcome measures (PROMs) have been shown to play a crucial role in assessing the impact of healthcare services on the life of patients with CCS⁴⁵. PROMs provide insights into health or well-being from the patient's perspective, without clinician interpretation. According to the World Health Organization (WHO), health encompasses complete physical, mental, and social well-being, extending beyond the absence of disease or infirmity. Therefore, beyond extending life expectancy, patients prioritize the quality of additional life-years gained⁴⁶. Consequently, understanding consistent symptomatic improvement following PCI is vital for physicians when discussing potential treatment benefits with patients.

The results of this current meta-analysis align with prior trials by showing improved quality of life of patients with CCS after PCI^{9,39,47,48}. The TIME Trial was one of the pioneering studies in stable CAD patients that demonstrated the benefit of invasive strategies over OMT in terms of quality of life³⁹. Similarly, in the ISCHEMIA trial, patients with chronic coronary syndrome and moderate or severe ischemia on functional testing experienced clinically significant improvements in quality of life with an initial invasive strategy⁹. However, these benefits were observed primarily in patients with more frequent anginal episodes at the time of treatment evaluation⁴⁹. The COURAGE trial also assessed quality of life changes between PCI plus OMT and OMT alone. Interestingly, while patients treated with PCI initially experienced improved quality of life, this effect diminished by the 12-month period⁴. Similarly, this current review also found that PCI was associated with better quality of life when compared to OMT and the effect size appeared to attenuate with time as well. Some studies have reported that the diminishing quality of life benefits observed over

longer follow-up periods suggested that perhaps the initial short-term improvements from invasive approaches may be influenced, at least in part, by a placebo effect^{4,5}. Indeed, in the first double-blinded, placebo-controlled trial using a sham procedure, ORBITA, Al-Lamee and her colleagues found no improvement in exercise time and quality of life scores beyond the sham procedure, even in patients with significant coronary stenosis¹¹. Contrastingly, the findings from a more recent double-blinded, placebo-controlled trial, ORBITA-2, revealed that in patients with CCS who were receiving minimal or no antianginal medication and had an objective evidence of ischemia, PCI led to a reduced angina symptom score compared to a sham procedure⁵⁰. This suggests an improvement in angina-related quality of life with PCI. However, it is important to note that even though the daily data showed that the effect of PCI was immediate and sustained, the patients in this study were followed for only 12 weeks, thus limiting the assessment of long-term effects beyond this timeframe.

Our current meta-analysis revealed that PCI was associated with improvements in angina-related health status, including freedom from angina and angina frequency, compared to OMT. Although this benefit persisted over a three-year follow-up period, we observed a decrease in the effect size over time. Consistent with our findings, a prior meta-analysis also demonstrated a significant improvement in angina-related health status with PCI plus OMT versus OMT alone. Notably, the inclusion of recent myocardial infarction (MI) survivors in some trials may have influenced these results⁵¹. Additionally, Boden et al also reported that the need for revascularization during follow-up was more common in patients receiving OMT, particularly in those with severe angina⁴. This trend aligns with previous studies indicating a decline in the proportion of angina-free patients with revascularization compared to initial medical therapy over time⁵². Although our analysis suggested a higher rate of revascularization in the OMT group, this difference did not reach statistical significance (See supplemental figure S7). The attenuation in the magnitude of improvement in quality of life and angina-related health status over time may be partly attributed to high crossover rates from the OMT to PCI group. However, further research is needed to explore these findings and their implications for clinical practice.

Additionally, this meta-analysis demonstrated that PCI plus OMT led to improvements in functional capacity compared to OMT, as measured by various parameters including the DASl score, exercise tolerance testing, and the physical limitation component of the SAQ. Although this effect persisted over the three-year period, it appeared to diminish with time. Previous studies have also reported similar benefits of PCI plus OMT over OMT alone in functional capacity, with some

indicating a more pronounced benefit in patients with lesions having lower baseline fractional flow reserve (FFR) values^{11,22,24,30,50}. However, a subgroup analysis in this review found no significant impact of FFR on functional capacity. Another study focusing on physical activity after PCI reported sustained improvements in functional capacity up to 12 months, particularly in patients with chronic total occlusion (CTO)⁵⁵. Nevertheless, a subgroup analysis in this current study found that the presence of CTO as the target vessel in the trial population did not influence the impact of PCI.

Indeed, while this current meta-analysis demonstrated that PCI in addition to OMT is superior to OMT alone in improving soft outcomes such as quality of life, functional capacity, angina relief, and reducing need for subsequent procedures, several important considerations remain unanswered. Firstly, it is uncertain whether the extent of angina reduction and the decrease in subsequent procedures achieved with PCI justify the increased costs associated with stenting and the procedural risks. Additionally, the potential periprocedural and long-term safety risks of PCI compared to OMT warrant careful consideration. The results of the cost-effectiveness analysis of PCI plus OMT versus OMT alone have varied across different trials. The TIME and FAME 2 trials indicated that PCI plus OMT was more cost-effective than OMT, suggesting favorable economic outcomes associated with the intervention^{53,54}. However, analyses from trials such as COURAGE and BARI 2D reported contrasting findings, indicating that PCI plus OMT may not always be the more cost-effective option compared to OMT alone^{55,56}. A comprehensive cost-effectiveness analysis revealed that the disparities observed in the cost-effectiveness of PCI plus OMT versus OMT alone may stem from the duration of follow-up⁵⁷. Short-term studies may overestimate cost due to the initial high expenses associated with PCI, without adequately considering the long-term reduction in repeat procedures⁵⁷. Moreover, the effectiveness of PCI in mitigating subsequent angina is notably contingent upon the initial symptom severity of the patient population, with PCI demonstrating greater benefits for individuals presenting with more severe symptoms⁵⁷. These insights are crucial for informed decision-making and optimal management of patients with CCS.

STUDY LIMITATIONS

We recognize several limitations to our analysis. Although the evaluation of quality of life, angina frequency, freedom from angina outcomes, and functional capacity were performed with validated questionnaires, the responses were all subjective and may be influenced by reporting bias from the participants. Similar to other trial-level analyses, we were

unable to consider factors such as adherence to assigned treatment, duration of medical therapy, type of stent, or the proportion of patients with stent usage in our analysis. These factors would be best evaluated through an individual patient level meta-analysis. In addition to our sensitivity analysis on the impact of individual studies on the results we would have liked to explore the impact of optimal medical therapy (OMT) based on current guidelines. However, due to the significant heterogeneity from evolving nature of medical therapies and variations in blood pressure and cholesterol targets during the time of the individual trials, conducting such an analysis was not feasible. Furthermore, we may have underestimated the benefits of PCI plus OMT compared to OMT because several trials had a high crossover rate. Additionally, there was significant heterogeneity in the validated tool used to assess the clinical outcomes of interest. Lastly, our meta-regression analysis, which considered covariates such as year of publication in relation to quality of life, may be prone to ecological fallacy since we did not have access to individual patient data.

CONCLUSION

The findings from our current meta-analysis demonstrate that PCI yields several benefits for patients with CCS over a period of 3 years compared to an initial approach of OMT. Specifically, PCI was associated with improvements in quality of life, functional capacity, freedom from angina, and reduction in angina frequency. Although there was a trend towards a reduced need for revascularization with PCI, this difference did not reach statistical significance. These compelling results highlight the potential long-term advantages of PCI in managing CCS, offering valuable insights for clinical practice and patient care.

Reference

1. Cardiovascular diseases (CVDs). Accessed April 10, 2024. [https://www.who.int/news-room/fact-sheets/detail/cardiovascular-diseases-\(cvds\)](https://www.who.int/news-room/fact-sheets/detail/cardiovascular-diseases-(cvds))
2. CDC. Heart Disease Facts | [cdc.gov](https://www.cdc.gov). Centers for Disease Control and Prevention. Published May 15, 2023. Accessed April 10, 2024. <https://www.cdc.gov/heartdisease/facts.htm>
3. Virani SS, Alonso A, Benjamin EJ, et al. Heart Disease and Stroke Statistics—2020 Update: A Report From the American Heart Association. *Circulation*. 2020;141(9). doi:10.1161/CIR.0000000000000757

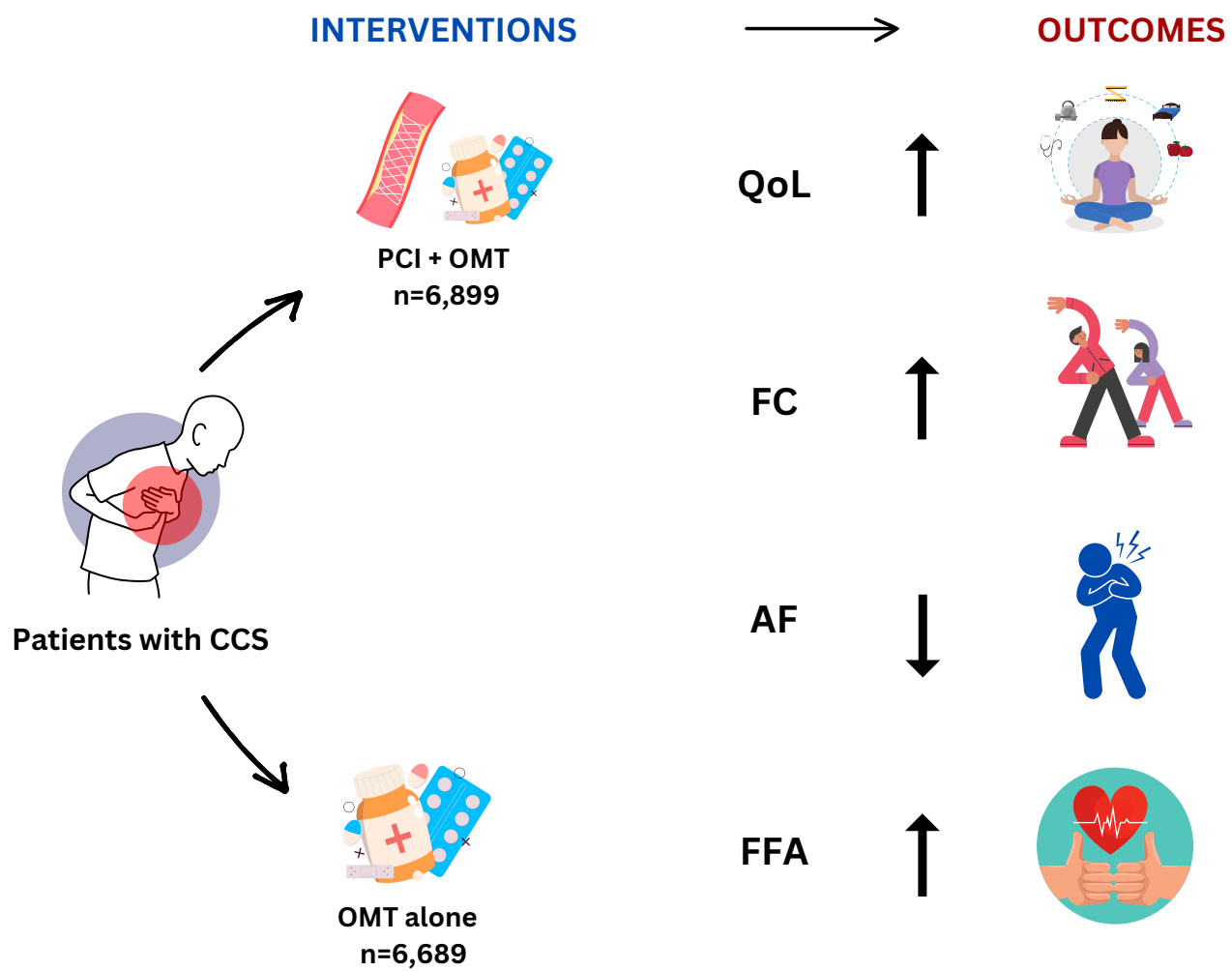
4. Boden WE, O'Rourke RA, Teo KK, et al. Optimal Medical Therapy with or without PCI for Stable Coronary Disease. *N Engl J Med*. 2007;356(15):1503-1516. doi:10.1056/NEJMoa070829
5. Maron DJ, Hochman JS, Reynolds HR, et al. Initial Invasive or Conservative Strategy for Stable Coronary Disease. *N Engl J Med*. 2020;382(15):1395-1407. doi:10.1056/NEJMoa1915922
6. Smith SC, Benjamin EJ, Bonow RO, et al. AHA/ACCF Secondary Prevention and Risk Reduction Therapy for Patients with Coronary and other Atherosclerotic Vascular Disease: 2011 update: a guideline from the American Heart Association and American College of Cardiology Foundation. *Circulation*. 2011;124(22):2458-2473. doi:10.1161/CIR.0b013e318235eb4d
7. Smith SC, Allen J, Blair SN, et al. AHA/ACC guidelines for secondary prevention for patients with coronary and other atherosclerotic vascular disease: 2006 update: endorsed by the National Heart, Lung, and Blood Institute. *Circulation*. 2006;113(19):2363-2372. doi:10.1161/CIRCULATIONAHA.106.174516
8. Rumsfeld JS, Alexander KP, Goff DC, et al. Cardiovascular Health: The Importance of Measuring Patient-Reported Health Status: A Scientific Statement From the American Heart Association. *Circulation*. 2013;127(22):2233-2249. doi:10.1161/CIR.0b013e3182949a2e
9. Spertus JA, Jones PG, Maron DJ, et al. Health Status after Invasive or Conservative Care in Coronary and Advanced Kidney Disease. *N Engl J Med*. 2020;382(17):1619-1628. doi:10.1056/NEJMoa1916374
10. Nishi T, Piroth Z, De Bruyne B, et al. Fractional Flow Reserve and Quality-of-Life Improvement After Percutaneous Coronary Intervention in Patients With Stable Coronary Artery Disease. *Circulation*. 2018;138(17):1797-1804. doi:10.1161/CIRCULATIONAHA.118.035263
11. Al-Lamee R, Thompson D, Dehbi HM, et al. Percutaneous coronary intervention in stable angina (ORBITA): a double-blind, randomised controlled trial. *The Lancet*. 2018;391(10115):31-40. doi:10.1016/S0140-6736(17)32714-9
12. Patel MR, Calhoon JH, Dehmer GJ, et al. ACC/AATS/AHA/ASE/ASNC/SCAI/SCCT/STS 2017 Appropriate Use Criteria for Coronary Revascularization in Patients With Stable Ischemic Heart Disease. *J Am Coll Cardiol*. 2017;69(17):2212-2241. doi:10.1016/j.jacc.2017.02.001
13. Fihn SD, Gardin JM, Abrams J, et al. 2012 ACCF/AHA/ACP/AATS/PCNA/SCAI/STS guideline for the diagnosis and management of patients with stable ischemic heart disease: a report of the American College of Cardiology Foundation/American Heart Association task force on practice guidelines, and the American College of Physicians, American Association for Thoracic Surgery, Preventive Cardiovascular Nurses Association, Society for Cardiovascular Angiography and Interventions, and Society of Thoracic Surgeons. *Circulation*. 2012;126(25):e354-471. doi:10.1161/CIR.0b013e318277d6a0
14. Virani SS, Newby LK, Arnold SV, et al. 2023 AHA/ACC/ACCP/ASPC/NLA/PCNA Guideline for the Management of Patients With Chronic Coronary Disease: A Report of the American Heart Association/American College of Cardiology Joint Committee on Clinical Practice Guidelines. *Circulation*. 2023;148(9). doi:10.1161/CIR.0000000000001168
15. Page MJ, McKenzie JE, Bossuyt PM, et al. The PRISMA 2020 statement: an updated guideline for reporting systematic reviews. *BMJ*. 2021;372:n71. doi:10.1136/bmj.n71
16. Clarke M, Clarke T. A study of the references used in Cochrane protocols and reviews. Three bibles, three dictionaries, and nearly 25,000 other things. *Int J Technol Assess Health Care*. 2000;16(3):907-909. doi:10.1017/s0266462300102181
17. Page MJ, Shamseer L, Tricco AC. Registration of systematic reviews in PROSPERO: 30,000 records and counting. *Syst Rev*. 2018;7(1):32. doi:10.1186/s13643-018-0699-4

18. Hays RD, Sherbourne CD, Mazel RM. The rand 36-item health survey 1.0. *Health Econ*. 1993;2(3):217-227. doi:10.1002/hec.4730020305
19. Spertus JA, Winder JA, Dewhurst TA, et al. Development and evaluation of the Seattle Angina questionnaire: A new functional status measure for coronary artery disease. *J Am Coll Cardiol*. 1995;25(2):333-341. doi:10.1016/0735-1097(94)00397-9
20. Hlatky MA, Boineau RE, Higginbotham MB, et al. A brief self-administered questionnaire to determine functional capacity (The Duke Activity Status Index). *Am J Cardiol*. 1989;64(10):651-654. doi:10.1016/0002-9149(89)90496-7
21. Kroenke K, Strine TW, Spitzer RL, Williams JBW, Berry JT, Mokdad AH. The PHQ-8 as a measure of current depression in the general population. *J Affect Disord*. 2009;114(1-3):163-173. doi:10.1016/j.jad.2008.06.026
22. Parisi AF, Folland ED, Hartigan P. A Comparison of Angioplasty with Medical Therapy in the Treatment of Single-Vessel Coronary Artery Disease. *N Engl J Med*. 1992;326(1):10-16. doi:10.1056/NEJM199201023260102
23. Hartigan PM, Giacomini JC, Folland ED, Parisi AF. Two- to three-year follow-up of patients with single-vessel coronary artery disease randomized to PTCA or medical therapy (results of a VA cooperative study). *Am J Cardiol*. 1998;82(12):1445-1450. doi:10.1016/S0002-9149(98)00685-7
24. Folland ED, Hartigan PM, Parisi AF. Percutaneous Transluminal Coronary Angioplasty Versus Medical Therapy for Stable Angina Pectoris. *J Am Coll Cardiol*. 1997;29(7):1505-1511. doi:10.1016/S0735-1097(97)00097-1
25. Zeymer U, Uebis R, Vogt A, et al. Randomized Comparison of Percutaneous Transluminal Coronary Angioplasty and Medical Therapy in Stable Survivors of Acute Myocardial Infarction With Single Vessel Disease: A Study of the Arbeitsgemeinschaft Leitende Kardiologische Krankenhausärzte. *Circulation*. 2003;108(11):1324-1328. doi:10.1161/01.CIR.0000087605.09362.0E
26. Pitt B, Waters D, Brown WV, et al. Aggressive Lipid-Lowering Therapy Compared with Angioplasty in Stable Coronary Artery Disease. *N Engl J Med*. 1999;341(2):70-76. doi:10.1056/NEJM199907083410202
27. Mancini GBJ, Farkouh ME, Brooks MM, et al. Medical Treatment and Revascularization Options in Patients With Type 2 Diabetes and Coronary Disease. *J Am Coll Cardiol*. 2016;68(10):985-995. doi:10.1016/j.jacc.2016.06.021
28. Bech GJW, De Bruyne B, Pijls NHJ, et al. Fractional Flow Reserve to Determine the Appropriateness of Angioplasty in Moderate Coronary Stenosis: A Randomized Trial. *Circulation*. 2001;103(24):2928-2934. doi:10.1161/01.CIR.103.24.2928
29. Werner GS, Martin-Yuste V, Hildick-Smith D, et al. A randomized multicentre trial to compare revascularization with optimal medical therapy for the treatment of chronic total coronary occlusions. *Eur Heart J*. 2018;39(26):2484-2493. doi:10.1093/eurheartj/ehy220
30. Xaplanteris P, Fournier S, Pijls NHJ, et al. Five-Year Outcomes with PCI Guided by Fractional Flow Reserve. *N Engl J Med*. 2018;379(3):250-259. doi:10.1056/NEJMoa1803538
31. Hennigan B, Berry C, Collison D, et al. Percutaneous coronary intervention versus medical therapy in patients with angina and grey-zone fractional flow reserve values: a randomised clinical trial. *Heart*. 2020;106(10):758-764. doi:10.1136/heartjnl-2019-316075
32. Hueb WA, Bellotti G, De Oliveira SA, et al. The Medicine, Angioplasty or Surgery Study (MASS): A prospective, randomized trial of medical therapy, balloon angioplasty or bypass surgery for single proximal left anterior descending artery stenoses. *J Am Coll Cardiol*. 1995;26(7):1600-1605. doi:10.1016/0735-1097(95)00384-3
33. Hueb WA, Soares PR, Almeida De Oliveira S, et al. Five-Year Follow-Up of the Medicine, Angioplasty, or Surgery Study (MASS): A Prospective, Randomized Trial of Medical Therapy, Balloon Angioplasty, or Bypass Surgery for Single

- Proximal Left Anterior Descending Coronary Artery Stenosis. *Circulation*. 1999;100(Supplement 2):II-107-II-113. doi:10.1161/01.CIR.100.suppl_2.II-107
34. Hueb W, Soares PR, Gersh BJ, et al. The medicine, angioplasty, or surgery study (MASS-II): a randomized, controlled clinical trial of three therapeutic strategies for multivessel coronary artery disease. *J Am Coll Cardiol*. 2004;43(10):1743-1751. doi:10.1016/j.jacc.2003.08.065
 35. Hueb W, Lopes NH, Gersh BJ, et al. Five-Year Follow-Up of the Medicine, Angioplasty, or Surgery Study (MASS II): A Randomized Controlled Clinical Trial of 3 Therapeutic Strategies for Multivessel Coronary Artery Disease. *Circulation*. 2007;115(9):1082-1089. doi:10.1161/CIRCULATIONAHA.106.625475
 36. Henderson RA, Pocock SJ, Clayton TC, et al. Seven-year outcome in the RITA-2 trial: coronary angioplasty versus medical therapy. *J Am Coll Cardiol*. 2003;42(7):1161-1170. doi:10.1016/S0735-1097(03)00951-3
 37. RITA Trial Participants. Coronary angioplasty versus coronary artery bypass surgery: the Randomised Intervention Treatment of Angina (RITA) trial. *The Lancet*. 1993;341(8845):573-580. doi:10.1016/0140-6736(93)90348-K
 38. Pfisterer M. Trial of Invasive versus Medical Therapy in the Elderly (TIME). *Heart Drug*. 2001;1(3):144-147. doi:10.1159/000048951
 39. Pfisterer M. Long-Term Outcome in Elderly Patients With Chronic Angina Managed Invasively Versus by Optimized Medical Therapy: Four-Year Follow-Up of the Randomized Trial of Invasive Versus Medical Therapy in Elderly Patients (TIME). *Circulation*. 2004;110(10):1213-1218. doi:10.1161/01.CIR.0000140983.69571.BA
 40. Sterne JAC, Savović J, Page MJ, et al. RoB 2: a revised tool for assessing risk of bias in randomised trials. *BMJ*. Published online August 28, 2019;l4898. doi:10.1136/bmj.l4898
 41. Maron DJ, Hochman JS, Reynolds HR, et al. Initial Invasive or Conservative Strategy for Stable Coronary Disease. *N Engl J Med*. 2020;382(15):1395-1407. doi:10.1056/NEJMoa1915922
 42. De Bruyne B, Pijls NHJ, Kalesan B, et al. Fractional Flow Reserve–Guided PCI versus Medical Therapy in Stable Coronary Disease. *N Engl J Med*. 2012;367(11):991-1001. doi:10.1056/NEJMoa1205361
 43. Lukkarinen H, Hentinen M. Treatments of Coronary Artery Disease Improve Quality of Life in the Long Term: *Nurs Res*. 2006;55(1):26-33. doi:10.1097/00006199-200601000-00004
 44. Goyal TM, Idler EL, Krause TJ, Contrada RJ. Quality of Life Following Cardiac Surgery: Impact of the Severity and Course of Depressive Symptoms. *Psychosom Med*. 2005;67(5):759-765. doi:10.1097/01.psy.0000174046.40566.80
 45. Weldring T, Smith SMS. Article Commentary: Patient-Reported Outcomes (PROs) and Patient-Reported Outcome Measures (PROMs). *Health Serv Insights*. 2013;6:HSI.S11093. doi:10.4137/HSI.S11093
 46. Thompson DR, Yu CM. [No title found]. *Health Qual Life Outcomes*. 2003;1(1):42. doi:10.1186/1477-7525-1-42
 47. Cohen DJ, Van Hout B, Serruys PW, et al. Quality of Life after PCI with Drug-Eluting Stents or Coronary-Artery Bypass Surgery. *N Engl J Med*. 2011;364(11):1016-1026. doi:10.1056/NEJMoa1001508
 48. Seto TB, Taira DA, Berezin R, et al. Percutaneous Coronary Revascularization in Elderly Patients: Impact on Functional Status and Quality of Life. *Ann Intern Med*. 2000;132(12):955. doi:10.7326/0003-4819-132-12-200006200-00005
 49. Spertus JA, Jones PG, Maron DJ, et al. Health-Status Outcomes with Invasive or Conservative Care in Coronary Disease. *N Engl J Med*. 2020;382(15):1408-1419. doi:10.1056/NEJMoa1916370

50. Rajkumar CA, Foley MJ, Ahmed-Jushuf F, et al. A Placebo-Controlled Trial of Percutaneous Coronary Intervention for Stable Angina. *N Engl J Med*. 2023;389(25):2319-2330. doi:10.1056/NEJMoa2310610
51. Wijeyesundera HC. Meta-analysis: Effects of Percutaneous Coronary Intervention Versus Medical Therapy on Angina Relief. *Ann Intern Med*. 2010;152(6):370. doi:10.7326/0003-4819-152-6-201003160-00007
52. Bytyçi I, Morina D, Bytyqi S, Bajraktari G, Henein MY. Percutaneous Coronary Intervention Is Not Superior to Optimal Medical Therapy in Chronic Coronary Syndrome: A Meta-Analysis. *J Clin Med*. 2023;12(4):1395. doi:10.3390/jcm12041395
53. Claude J, Schindler C, Kuster GM, et al. Cost-effectiveness of invasive versus medical management of elderly patients with chronic symptomatic coronary artery disease. Findings of the randomized trial of invasive versus medical therapy in elderly patients with chronic angina (TIME). *Eur Heart J*. 2004;25(24):2195-2203. doi:10.1016/j.ehj.2004.09.013
54. Fearon WF, Nishi T, De Bruyne B, et al. Clinical Outcomes and Cost-Effectiveness of Fractional Flow Reserve-Guided Percutaneous Coronary Intervention in Patients With Stable Coronary Artery Disease: Three-Year Follow-Up of the FAME 2 Trial (Fractional Flow Reserve Versus Angiography for Multivessel Evaluation). *Circulation*. 2018;137(5):480-487. doi:10.1161/CIRCULATIONAHA.117.031907
55. Weintraub WS, Boden WE, Zhang Z, et al. Cost-effectiveness of percutaneous coronary intervention in optimally treated stable coronary patients. *Circ Cardiovasc Qual Outcomes*. 2008;1(1):12-20. doi:10.1161/CIRCOUTCOMES.108.798462
56. Hlatky MA, Boothroyd DB, Melsop KA, et al. Economic outcomes of treatment strategies for type 2 diabetes mellitus and coronary artery disease in the Bypass Angioplasty Revascularization Investigation 2 Diabetes trial. *Circulation*. 2009;120(25):2550-2558. doi:10.1161/CIRCULATIONAHA.109.912709
57. Wijeyesundera HC, Tomlinson G, Ko DT, Dzavik V, Krahn MD. Medical Therapy v. PCI in Stable Coronary Artery Disease: A Cost-Effectiveness Analysis. *Med Decis Making*. 2013;33(7):891-905. doi:10.1177/0272989X13497262

Percutaneous Coronary Intervention versus Optimal Medical Therapy: A Quality of Life and Functional Capacity Assessment



Abbreviations: CCS- chronic coronary syndrome, PCI - percutaneous coronary intervention, OMT - optimal medical therapy, QoL - quality of life, FC - functional capacity, AF - angina frequency, FFA - freedom from angina