

1 **Incidence, symptoms and medical care for influenza virus and respiratory syncytial**
2 **virus illnesses among older adults in Eastern China: Findings from the China Ageing**
3 **Respiratory Infections Study (CARES), 2015-2017**

4

5 **Table of Contents**

6	Additional information on Methods.....	2
7	Monitoring for acute respiratory illness (ARI).....	2
8	Primary outcomes and statistical analyses	3
9	Additional information on Results	6
10	Active surveillance for acute respiratory illness (ARI)	6
11	Appendix Tables.....	7
12	Appendix Figures	18
13	References	23

14

15

16 **Additional information on Methods**

17 ***Monitoring for acute respiratory illness (ARI)***

18 We conducted active surveillance for acute respiratory illness (ARI) throughout the year
19 (December 2015-September 2017) with weekly telephone calls because influenza viruses are
20 known to circulate outside of the typical winter season in eastern China, though we expected
21 RSV to circulate mostly in winter seasons.^{1,2} To monitor for ARI, we contacted participants
22 every week by telephone until the participants or their proxies were successfully reached.
23 Follow-up with a proxy was used if the participant did not have a phone or was unreachable
24 at the time that weekly calls were conducted. To allow assessment of the quality of reporting
25 by beginning in May 2016, we recorded whether the participant or a proxy was reached
26 during the weekly follow-up calls for illness. If the study participant was not present during
27 the weekly follow-up call and a proxy answered questions about participant illness, the proxy
28 was asked if they interacted with the participant daily since the last follow-up call. During the
29 weekly calls, we asked if the participant was experiencing a new onset of an acute illness by
30 asking about respiratory symptoms. If fever was reported, the participant was asked whether
31 it was subjective feverishness, chills, or measured temperature $\geq 37.8^{\circ}\text{C}$ and the participant
32 was asked about other symptoms being experienced. Illness episodes with onset dates that
33 were ≥ 14 days apart were considered separate illness episodes. If an ARI episode was
34 identified, a home visit was arranged to collect respiratory swab specimens (combined mid-
35 turbinate and oropharyngeal swab) within 7 days of symptom onset for laboratory
36 confirmation of influenza virus and RSV infections. During the household visit, study staff
37 completed an acute illness episode questionnaire that recorded illness symptoms (such as
38 cough, sore throat, congestion, self-reported fever or measured temperature) and duration,
39 clinical characteristics, self-reported health and functioning, cognitive functioning, and
40 whether medical care was sought. Participants described subjective severity of each symptom

Appendix

41 as absent, mild, moderate, or severe (0–3, respectively),^{3,4} and mean symptom severity score
42 (1-3) was calculated for those meeting the ARI definition. Participants reported their overall
43 health on the day of the acute illness survey using a visual analogue thermometer (from 0
44 [worst health state you can imagine] to 100 [best health state you can imagine]).⁵ During the
45 same survey, participants rated their ability to complete their regular activities from 0%
46 (unable to do any activities and responsibilities) to 100% (able to do all activities and
47 responsibilities). Cognitive functioning was assessed with short-term recall of three words.^{6,7}
48 About 10 days after illness onset, a follow-up questionnaire was completed by telephone to
49 obtain information about illness resolution and outcome. Participants were asked if they had
50 recovered at 10 days after illness onset; if not, they were contacted every three days by
51 telephone until the illness resolved or there was confirmation of patient death. Additionally,
52 participants also reported whether or not they received medical care during their illness
53 (including hospitalization), the use of antibiotics or over-the-counter medications, and the
54 number days spent in bed for at least half of the day.⁸

55

56 Data were captured and stored in a real-time online database, REDCap (Research Electronic
57 Data Capture).⁹ Weekly data checks were completed to ensure that all participants were
58 contacted weekly. Respiratory specimens were placed in coolers at 2–8°C and transported to
59 the Suzhou Center for Disease Prevention and Control (CDC) or Yancheng CDC laboratories
60 within 24 hours of collection. Aliquots of specimens were stored at -80°C until testing was
61 completed.⁷

62

63 *Primary outcomes and statistical analyses*

64 We defined the cumulative incidence of influenza or RSV ARIs as the proportion of
65 participants with PCR-confirmed influenza virus or RSV infections among participants

Appendix

66 enrolled at the start of each study year. Study Year 1 was 27 December 2015–3 September
67 2016 and Year 2 was 4 September 2016–2 September 2017. Based on previous studies, we
68 anticipated a cumulative incidence of influenza ARI of 2–4% in older adults per year.^{10,11} To
69 estimate a cumulative incidence of influenza ARI of 2% with $\pm 0.7\%$ margin of error, we
70 aimed to enroll a sample size of 1,500 older adults.⁷ We also estimated the weekly incidence
71 rates of influenza or RSV viruses from symptom onset date per 10,000 person-weeks of
72 follow-up, defining each week from Sunday through Saturday. Participants were included in
73 person-week count if they were contacted and responded to follow-up questions in that
74 week.¹² We estimated the cumulative and weekly incidence by age group and calculated all-
75 age estimates, using the Jiangsu Province population to weight by age and sex (**Appendix**
76 **Figure 1**). We estimated 95% confidence intervals (95% CIs) for the cumulative and weekly
77 incidence using a bootstrap with 2,000 resamples.^{13,14} If there were no illness outcomes
78 observed (e.g., ARI, ILI, influenza or RSV) during a surveillance week, the incidence point
79 estimate was zero and uncertainty regarding the true incidence was represented as $(0, 3/n)$
80 where n was the number of participants followed.¹⁴

81

82 Clinical characteristics, illness duration, cognitive functioning, self-reported health and
83 functioning, and medical care for ARI episodes were captured during illness interviews.
84 Participants described subjective severity of each symptom as absent, mild, moderate, or
85 severe and responses were scored as 0–3, respectively for each severity level.^{3,4} We classified
86 symptoms into categories: upper respiratory symptoms (sore throat, runny nose or nasal
87 congestion), lower respiratory symptoms (cough, shortness of breath), and systemic
88 symptoms (myalgias, headache, and self-reported fever including feverishness, chills, or
89 measured fever $\geq 37.8^\circ\text{C}$).¹⁵ We constructed symptom severity scores for each category by
90 adding self-reported symptom scores ranging from 0–3 depending on severity level and

Appendix

91 dividing by the number of symptoms in the symptom category. The constructed symptom
92 category severity scores ranged from 0-3. Illness duration was defined as the number of days
93 experiencing any ARI symptoms. Illness days in bed was calculated as the number days spent
94 in bed for at least half of the day.⁸ During illness, cognitive functioning was assessed with
95 short-term recall of three words,^{6,7} self-rated (overall) health state with a visual analogue
96 thermometer (from 0 [worst health state you can imagine] to 100 [best health state you can
97 imagine]),⁵ and whether participants were able to complete their regular activities from 0%
98 (unable to do any of your activities and responsibilities) to 100% (able to do all your
99 activities and responsibilities). Participants also self-reported whether or not they received
100 medical care during their illness, medication use (e.g., antipyretics, antibiotics, and antiviral
101 medications), and if they were hospitalized (including duration of hospitalization). If
102 participant death was reported, causes of death were obtained through medical records, death
103 certificates, or family members. We compared illness characteristics of ARI episodes with
104 PCR-confirmed influenza ('influenza ARI') or ARI episodes with PCR-confirmed RSV
105 infections ('RSV ARI'), with ARI episodes that were influenza and RSV PCR-negative
106 ('influenza and RSV PCR-negative ARI'): we used Student's t test for comparison of severity
107 scores and illness duration variables, and Fisher's exact test for comparison of cognitive
108 functioning, symptoms and medical care.

109

110 Analyses were done using R version 4.2.2 (R Foundation for Statistical Computing, Vienna,
111 Austria), with the geospatial data obtained from the Global Administrative Areas (GADM)
112 database version 2.8.¹⁶

113

114 **Additional information on Results**

115 *Active surveillance for acute respiratory illness (ARI)*

116 During active surveillance for ARI, January 2016–August 2017, we contacted participants
117 every week and either spoke to the individual or a proxy to assess new onset of symptoms
118 since our last contact. One thousand five hundred and two participants translated to a possible
119 124,091 weeks eligible for active surveillance. In May 2016, we began to record if health
120 status was reported by the participant or a proxy. Of 97,914 successful weekly contacts,
121 69,911 (71%) reached the participant directly and 26,531 (27%) reached a proxy to access
122 health status. When a proxy was reached, they were asked if they had regular contact with the
123 participant. Nearly all proxy contacts (26,363, 99%) reported meeting the participant daily.
124 Using these weekly contacts, we assessed health status for 120,484/124,091 (97%) person-
125 weeks of follow-up. We identified 1,043 reports of acute illness. Of those, 898 (86%)
126 episodes reported by 522 participants met the ARI definition.
127

128 **Appendix Tables**129 **Appendix Table 1. Definition of illness definitions and outcomes and self-reported health status.**

Outcome	Definition/ Measurement	Reference
<u>Illness</u>		
Acute respiratory illness (ARI)	Sudden onset of two or more of the following symptoms in the past 7 days: fever (self-reported feverishness, chills, or temperature $\geq 37.8^{\circ}\text{C}$), cough, sore throat, runny nose or nasal congestion, headache, myalgia (body or muscle aches and pain), or worsened shortness of breath.	
Influenza-like illness (ILI)	An ARI with measured fever of $\geq 37.8^{\circ}\text{C}$ (self-reported and/or measured by study staff) plus cough.	
Medically-attended ARI	An ARI with a self-reported medical visit to a doctor or other medical professional during the acute illness, including visits to outpatient medical clinic/offices, emergency rooms, or hospitals.	
ARI-associated hospitalization	A self-reported hospitalization (i.e. staying in the hospital for at least one night as a patient) during an ARI.	
ARI-associated death	A death that occurs within 14 days of ARI symptom onset.	
<u>Health status</u>		
Number of days in bed	Number of days the participant stayed in bed for at least half the day while he/ she was sick.	Searle SD et al, BMC Geriatr 2008; 8:24.
Cognitive function	Two measures were used: (1) A 3-item recall in the Mini-Cog tool, i.e. the number of words recalled after a several-minute delay and distraction. (2) The full Standardised Mini-Mental State Examination (SMMSE).	Borson S et al, Int J Geriatr Psychiatry 2000; 15:1021-7; Molloy DW et al, Am J Psychiatry 1991; 148:102-5.
Self-rate health state	A visual analogue scale (VAS) adapted from the EQ-5D with a range from 0 to 100, where the participant self-evaluated how he/she is feeling today, with the best health state he/she can imagine as 100 at the top, and the worst health state he/she can imagine as 0 at the bottom.	Wu C et al, PLoS One 2016; 11:e0164334.
Self-rated activity level	Participant was asked to self-evaluate how his/ her illness has affected his/her life and activities with a range from 0 to 100, where 100% means he/ she was able to do all his/ her activities and responsibilities as he/ she would normally, and 0% means he/ she was unable to do any of his/ her activities or responsibilities.	

131 **Appendix Table 2. Reasons for participant withdrawal or loss to follow-up.**

Cause of withdrawal	Number of participants (N = 190)
Death	84 (44%)
Cancer	30 (16%)
Stroke	17 (9%)
Cardiovascular disease	17 (9%)
Chronic lung disease	4 (2%)
Neurologic disorder (e.g. Alzheimer's disease)	3 (2%)
Accident	3 (2%)
Diabetes	2 (1%)
Others	8 (4%)
No longer interested in participating	81 (43%)
Relocated	14 (7%)
Deteriorate health	7 (4%)
Lost contact	2 (1%)
Others	2 (1%)

132

133 **Appendix Table 3. Proportion of participants with acute respiratory illness (ARI), medically attended**
 134 **ARI, ARI-associated hospitalization and death by age group in New District, Suzhou.**

	Age (years)							
	Year 1				Year 2			
	Age (years)				Age (years)			
	60 – 69	70 – 79	80 – 89	Total	60 – 69	70 – 79	80 – 89	Total
Number of person-week with follow-up attempt	4423	4577	3753	12753	6360	6454	5128	17942
Number of person-week with successful follow up (n, %)	4238 (95.8)	4356 (95.2)	3572 (95.2)	12166 (95.4)	6176 (97.1)	6233 (96.6)	4976 (97)	17385 (96.9)
	No. of participants (%)				No. of participants (%)			
	(N=126)	(N=135)	(N=113)	(N=374)	(N=124)	(N=130)	(N=107)	(N=361)
Participants followed¹								
Number of participants at start of year	126	135	113	374	124	130	107	361
Acute respiratory illness and medical care								
Acute respiratory illness (ARI)								
Participants with one ARI episode only	12 (10)	20 (15)	15 (13)	47 (13)	21 (17)	19 (15)	20 (19)	60 (17)
Participants with two or more ARI episodes	5 (4)	1 (1)	3 (3)	9 (2)	2 (2)	4 (3)	3 (3)	9 (2)
Participants with one influenza ARI episode only	0 (0)	0 (0)	2 (1.8)	2 (0.5)	3 (2.4)	6 (4.6)	3 (2.8)	12 (3.3)
Participants with two or more influenza ARI episodes	0 (0)	0 (0)	0 (0)	0 (0)	0 (0)	0 (0)	0 (0)	0 (0)
Participants with one RSV ARI episode only	0 (0)	2 (1.5)	0 (0)	2 (0.5)	1 (0.8)	0 (0)	2 (1.9)	3 (0.8)
Medically attended ARI²								
Participants with one medically attended ARI episode only	5 (4)	6 (4)	12 (11)	23 (6)	13 (10)	13 (10)	11 (10)	37 (10)
Participants with two or more medically attended ARI episodes	2 (2)	0 (0)	0 (0)	2 (1)	0 (0)	1 (1)	2 (2)	3 (1)
Participants with one medically attended influenza ARI episode only	0 (0)	0 (0)	1 (0.9)	1 (0.3)	2 (1.6)	4 (3.1)	2 (1.9)	8 (2.2)
Participants with two or more medically attended influenza ARI episodes	0 (0)	0 (0)	0 (0)	0 (0)	0 (0)	0 (0)	0 (0)	0 (0)
Participants with one medically attended RSV ARI episode only	0 (0)	1 (0.7)	0 (0)	1 (0.3)	1 (0.8)	0 (0)	2 (1.9)	3 (0.8)
ARI-associated hospitalization³								
Participants with one hospitalization only	0 (0)	0 (0)	3 (2.7)	3 (0.8)	0 (0)	0 (0)	3 (2.8)	3 (0.8)
Participants with one hospitalization with influenza ARI only	0 (0)	0 (0)	0 (0)	0 (0)	0 (0)	0 (0)	0 (0)	0 (0)
Participants with one hospitalization with RSV ARI only	0 (0)	0 (0)	0 (0)	0 (0)	0 (0)	0 (0)	0 (0)	0 (0)
Death within 14 days of ARI symptom onset⁴								
Deaths	0 (0)	0 (0)	0 (0)	0 (0)	0 (0)	0 (0)	0 (0)	0 (0)
Deaths with influenza	0 (0)	0 (0)	0 (0)	0 (0)	0 (0)	0 (0)	0 (0)	0 (0)
Deaths with RSV	0 (0)	0 (0)	0 (0)	0 (0)	0 (0)	0 (0)	0 (0)	0 (0)

1 All participants were enrolled at the start of the study with no replenishment. Year 1: 27 December 2015 – 3 September 2016; Year 2: 4 September 2016 – 2 September 2017.

2 A medically attended ARI episode is defined as an ARI with a self-reported medical visit to a doctor or other medical professional for this illness including outpatient medical clinic/offices, emergency rooms or was hospitalized, reported during the acute illness.

3 An ARI-associated hospitalization is defined as an ARI with a self-reported hospitalization, reported during the acute illness.

4 One death during ARI with PCR-confirmed RSV infection but this case was not hospitalized.

135
136
137
138
139
140
141
142

143 **Appendix Table 4. Proportion of participants with acute respiratory illness (ARI), medically attended**
 144 **ARI, ARI-associated hospitalization, and death by age group in Xiangcheng, Suzhou.**

	Age (years)							
	Year 1				Year 2			
	Age (years)				Age (years)			
	60 – 69	70 – 79	80 – 89	Total	60 – 69	70 – 79	80 – 89	Total
Number of person-week with follow-up attempt	5582	4465	3391	13438	7364	6210	4449	18023
Number of person-week with successful follow up (n, %)	5264 (94.3)	4087 (91.5)	2956 (87.2)	12307 (91.6)	7164 (97.3)	6051 (97.4)	4300 (96.7)	17515 (97.2)
	No. of participants (%)				No. of participants (%)			
	(N=126)	(N=135)	(N=113)	(N=374)	(N=124)	(N=130)	(N=107)	(N=361)
Participants followed¹								
Number of participants at start of year	167	127	100	394	152	125	93	370
Acute respiratory illness and medical care								
Acute respiratory illness (ARI)								
Participants with one ARI episode only	33 (20)	23 (18)	13 (13)	69 (18)	26 (17)	39 (31)	16 (17)	81 (22)
Participants with two or more ARI episodes	14 (8)	9 (7)	2 (2)	25 (6)	21 (14)	20 (16)	12 (13)	53 (14)
Participants with one influenza ARI episode only	4 (2.4)	2 (1.6)	0 (0)	6 (1.5)	13 (8.6)	8 (6.4)	5 (5.4)	26 (7)
Participants with two or more influenza ARI episodes	0 (0)	0 (0)	0 (0)	0 (0)	0 (0)	1 (0.8)	0 (0)	1 (0.3)
Participants with one RSV ARI episode only	1 (0.6)	1 (0.8)	0 (0)	2 (0.5)	1 (0.7)	3 (2.4)	2 (2.2)	6 (1.6)
Medically attended ARI²								
Participants with one medically attended ARI episode only	25 (15)	14 (11)	9 (9)	48 (12)	17 (11)	23 (18)	11 (12)	51 (14)
Participants with two or more medically attended ARI episodes	3 (2)	1 (1)	1 (1)	5 (1)	13 (9)	8 (6)	4 (4)	25 (7)
Participants with one medically attended influenza ARI episode only	4 (2.4)	1 (0.8)	0 (0)	5 (1.3)	11 (7.2)	5 (4)	1 (1.1)	17 (4.6)
Participants with two or more medically attended influenza ARI episodes	0 (0)	0 (0)	0 (0)	0 (0)	0 (0)	1 (0.8)	0 (0)	1 (0.3)
Participants with one medically attended RSV ARI episode only	1 (0.6)	0 (0)	0 (0)	1 (0.3)	0 (0)	2 (1.6)	0 (0)	2 (0.5)
ARI-associated hospitalization³								
Participants with one hospitalization only	1 (0.6)	1 (0.8)	2 (2)	4 (1)	1 (0.7)	4 (3.2)	3 (3.2)	8 (2.2)
Participants with one hospitalization with influenza ARI only	1 (0.6)	0 (0)	0 (0)	1 (0.3)	1 (0.7)	0 (0)	0 (0)	1 (0.3)
Participants with one hospitalization with RSV ARI only	0 (0)	0 (0)	0 (0)	0 (0)	0 (0)	1 (0.8)	0 (0)	1 (0.3)
Death within 14 days of ARI symptom onset⁴								
Deaths	0 (0)	0 (0)	0 (0)	0 (0)	0 (0)	0 (0)	0 (0)	0 (0)
Deaths with influenza	0 (0)	0 (0)	0 (0)	0 (0)	0 (0)	0 (0)	0 (0)	0 (0)
Deaths with RSV	0 (0)	0 (0)	0 (0)	0 (0)	0 (0)	0 (0)	0 (0)	0 (0)

1 All participants were enrolled at the start of the study with no replenishment. Year 1: 27 December 2015 – 3 September 2016; Year 2: 4 September 2016 – 2 September 2017.

2 A medically attended ARI episode is defined as an ARI with a self-reported medical visit to a doctor or other medical professional for this illness including outpatient medical clinic/offices, emergency rooms or was hospitalized, reported during the acute illness.

3 An ARI-associated hospitalization is defined as an ARI with a self-reported hospitalization, reported during the acute illness.

4 One death during ARI with PCR-confirmed RSV infection but this case was not hospitalized.

145
146
147
148
149
150
151

Appendix

152 **Appendix Table 5. Proportion of participants with acute respiratory illness (ARI), medically attended**
 153 **ARI, ARI-associated hospitalization, and death by age group in Economic Development Zone (EDZ),**
 154 **Yancheng.**

	Age (years)							
	Year 1				Year 2			
	Age (years)				Age (years)			
	60 – 69	70 – 79	80 – 89	Total	60 – 69	70 – 79	80 – 89	Total
Number of person-week with follow-up attempt	2798	2772	2763	8333	4032	3923	4019	11974
Number of person-week with successful follow up (n, %)	2710 (96.9)	2683 (96.8)	2680 (97)	8073 (96.9)	4030 (100)	3917 (99.8)	4016 (99.9)	11963 (99.9)
	No. of participants (%)				No. of participants (%)			
	(N=126)	(N=135)	(N=113)	(N=374)	(N=124)	(N=130)	(N=107)	(N=361)
Participants followed¹								
Number of participants at start of year	88	85	84	257	82	79	81	242
Acute respiratory illness and medical care								
Acute respiratory illness (ARI)								
Participants with one ARI episode only	10 (11)	11 (13)	5 (6)	26 (10)	12 (15)	23 (29)	19 (23)	54 (22)
Participants with two or more ARI episodes	4 (5)	4 (5)	2 (2)	10 (4)	8 (10)	10 (13)	7 (9)	25 (10)
Participants with one influenza ARI episode only	0 (0)	0 (0)	0 (0)	0 (0)	4 (4.9)	9 (11.4)	8 (9.9)	21 (8.7)
Participants with two or more influenza ARI episodes	0 (0)	0 (0)	0 (0)	0 (0)	0 (0)	0 (0)	0 (0)	0 (0)
Participants with one RSV ARI episode only	1 (1.1)	0 (0)	0 (0)	1 (0.4)	2 (2.4)	0 (0)	1 (1.2)	3 (1.2)
Medically attended ARI²								
Participants with one medically attended ARI episode only	7 (8)	8 (9)	4 (5)	19 (7)	13 (16)	22 (28)	17 (21)	52 (21)
Participants with two or more medically attended ARI episodes	2 (2)	2 (2)	2 (2)	6 (2)	3 (4)	5 (6)	4 (5)	12 (5)
Participants with one medically attended influenza ARI episode only	0 (0)	0 (0)	0 (0)	0 (0)	4 (4.9)	9 (11.4)	7 (8.6)	20 (8.3)
Participants with two or more medically attended influenza ARI episodes	0 (0)	0 (0)	0 (0)	0 (0)	0 (0)	0 (0)	0 (0)	0 (0)
Participants with one medically attended RSV ARI episode only	0 (0)	0 (0)	0 (0)	0 (0)	1 (1.2)	0 (0)	1 (1.2)	2 (0.8)
ARI-associated hospitalization³								
Participants with one hospitalization only	0 (0)	2 (2.4)	0 (0)	2 (0.8)	1 (1.2)	0 (0)	1 (1.2)	2 (0.8)
Participants with one hospitalization with influenza ARI only	0 (0)	0 (0)	0 (0)	0 (0)	1 (1.2)	0 (0)	0 (0)	1 (0.4)
Participants with one hospitalization with RSV ARI only	0 (0)	0 (0)	0 (0)	0 (0)	0 (0)	0 (0)	0 (0)	0 (0)
Death within 14 days of ARI symptom onset⁴								
Deaths	0 (0)	0 (0)	0 (0)	0 (0)	0 (0)	0 (0)	0 (0)	0 (0)
Deaths with influenza	0 (0)	0 (0)	0 (0)	0 (0)	0 (0)	0 (0)	0 (0)	0 (0)
Deaths with RSV	0 (0)	0 (0)	0 (0)	0 (0)	0 (0)	0 (0)	0 (0)	0 (0)

1 All participants were enrolled at the start of the study with no replenishment. Year 1: 27 December 2015 – 3 September 2016; Year 2: 4 September 2016 – 2 September 2017.

2 A medically attended ARI episode is defined as an ARI with a self-reported medical visit to a doctor or other medical professional for this illness including outpatient medical clinic/offices, emergency rooms or was hospitalized, reported during the acute illness.

3 An ARI-associated hospitalization is defined as an ARI with a self-reported hospitalization, reported during the acute illness.

4 One death during ARI with PCR-confirmed RSV infection but this case was not hospitalized.

155
 156
 157
 158
 159
 160
 161

162 **Appendix Table 6. Proportion of participants with acute respiratory illness (ARI), medically attended**
 163 **ARI, ARI-associated hospitalization, and death by age group in Tinghu, Yancheng.**

	Age (years)							
	Year 1				Year 2			
	Age (years)				Age (years)			
	60 – 69	70 – 79	80 – 89	Total	60 – 69	70 – 79	80 – 89	Total
Number of person-week with follow-up attempt	5596	5611	5613	16820	8498	8278	8032	24808
Number of person-week with successful follow up (n, %)	5419 (96.8)	5423 (96.6)	5437 (96.9)	16279 (96.8)	8494 (100)	8272 (99.9)	8030 (100)	24796 (100)
	No. of participants (%)				No. of participants (%)			
	(N=126)	(N=135)	(N=113)	(N=374)	(N=124)	(N=130)	(N=107)	(N=361)
Participants followed¹								
Number of participants at start of year	166	168	168	502	166	166	165	497
Acute respiratory illness and medical care								
Acute respiratory illness (ARI)								
Participants with one ARI episode only	20 (12)	22 (13)	23 (14)	65 (13)	30 (18)	29 (17)	22 (13)	81 (16)
Participants with two or more ARI episodes	8 (5)	7 (4)	2 (1)	17 (3)	16 (10)	11 (7)	6 (4)	33 (7)
Participants with one influenza ARI episode only	2 (1.2)	0 (0)	0 (0)	2 (0.4)	10 (6)	11 (6.6)	3 (1.8)	24 (4.8)
Participants with two or more influenza ARI episodes	0 (0)	0 (0)	0 (0)	0 (0)	0 (0)	0 (0)	0 (0)	0 (0)
Participants with one RSV ARI episode only	1 (0.6)	0 (0)	1 (0.6)	2 (0.4)	1 (0.6)	2 (1.2)	0 (0)	3 (0.6)
Medically attended ARI²								
Participants with one medically attended ARI episode only	19 (11)	15 (9)	17 (10)	51 (10)	31 (19)	28 (17)	23 (14)	82 (16)
Participants with two or more medically attended ARI episodes	6 (4)	7 (4)	1 (1)	14 (3)	15 (9)	11 (7)	4 (2)	30 (6)
Participants with one medically attended influenza ARI episode only	2 (1.2)	0 (0)	0 (0)	2 (0.4)	10 (6)	11 (6.6)	2 (1.2)	23 (4.6)
Participants with two or more medically attended influenza ARI episodes	0 (0)	0 (0)	0 (0)	0 (0)	0 (0)	0 (0)	0 (0)	0 (0)
Participants with one medically attended RSV ARI episode only	1 (0.6)	0 (0)	0 (0)	1 (0.2)	1 (0.6)	1 (0.6)	0 (0)	2 (0.4)
ARI-associated hospitalization³								
Participants with one hospitalization only	0 (0)	0 (0)	0 (0)	0 (0)	2 (1.2)	1 (0.6)	1 (0.6)	4 (0.8)
Participants with one hospitalization with influenza ARI only	0 (0)	0 (0)	0 (0)	0 (0)	0 (0)	1 (0.6)	0 (0)	1 (0.2)
Participants with one hospitalization with RSV ARI only	0 (0)	0 (0)	0 (0)	0 (0)	0 (0)	0 (0)	0 (0)	0 (0)
Death within 14 days of ARI symptom onset⁴								
Deaths	0 (0)	0 (0)	0 (0)	0 (0)	0 (0)	1 (0.6)	0 (0)	1 (0.2)
Deaths with influenza	0 (0)	0 (0)	0 (0)	0 (0)	0 (0)	0 (0)	0 (0)	0 (0)
Deaths with RSV	0 (0)	0 (0)	0 (0)	0 (0)	0 (0)	1 (0.6)	0 (0)	1 (0.2)

1 All participants were enrolled at the start of the study with no replenishment. Year 1: 27 December 2015 – 3 September 2016; Year 2: 4 September 2016 – 2 September 2017.

2 A medically attended ARI episode is defined as an ARI with a self-reported medical visit to a doctor or other medical professional for this illness including outpatient medical clinic/offices, emergency rooms or was hospitalized, reported during the acute illness.

3 An ARI-associated hospitalization is defined as an ARI with a self-reported hospitalization, reported during the acute illness.

4 One death during ARI with PCR-confirmed RSV infection but this case was not hospitalized.

164
165
166
167
168
169
170

Appendix

171 **Appendix Table 7. Incidence rate of acute respiratory illness (ARI), influenza-like illness (ILI), PCR-**
 172 **confirmed influenza ARI, and PCR-confirmed RSV ARI per 10,000 person-years by age group.**

Age (years)	Incidence rate per 10,000 person-years (%; 95% confidence interval)			
	60 – 69	70 – 79	80 – 89	Overall (weighed) ⁶
Year 1 (27 December 2015 – 3 September 2016)				
Number of person-week with follow-up attempt	18399	17425	15520	51344
Number of person-week with successful follow up (n, %)	17631 (95.8%)	16549 (95.0%)	14645 (94.4%)	48825 (95.1%)
Acute respiratory illness (ARI) ¹	4380 (3699, 5061)	3878 (3248, 4572)	2672 (2102, 3243)	3940 (3473, 4394)
Influenza-like illness (ILI) ²	621 (385, 888)	536 (315, 788)	570 (321, 856)	590 (422, 789)
PCR-confirmed influenza ARI				
All	178 (59, 355)	63 (0, 158)	71 (0, 178)	125 (49, 220)
Medically attended ³	178 (59, 326)	32 (0, 95)	36 (0, 107)	111 (34, 212)
Hospitalized ⁴	30 (0, 89)	0 (0, 95)	0 (0, 107)	15 (0, 44)
PCR-confirmed RSV ARI				
All	89 (0, 207)	95 (0, 221)	36 (0, 107)	83 (26, 172)
Medically attended	59 (0, 148)	32 (0, 95)	0 (0, 107)	42 (0, 116)
Hospitalized ⁵	0 (0, 89)	0 (0, 95)	0 (0, 107)	0 (0, 32)
Year 2 (4 September 2016 – 2 September 2017)				
Number of person-week with follow-up attempt	26254	24865	21628	72747
Number of person-week with successful follow up (n, %)	25864 (98.5%)	24473 (98.4%)	21322 (98.6%)	71659 (98.5%)
Acute respiratory illness (ARI)	4095 (3551, 4660)	4499 (3902, 5117)	3402 (2838, 3940)	4204 (3806, 4640)
Influenza-like illness (ILI)	605 (403, 827)	725 (490, 981)	514 (318, 783)	640 (492, 807)
PCR-confirmed influenza ARI				
All	605 (403, 827)	768 (533, 1023)	465 (269, 685)	648 (501, 821)
Medically attended	545 (343, 746)	661 (426, 895)	294 (147, 465)	572 (429, 738)
Hospitalized	40 (0, 101)	21 (0, 64)	0 (0, 73)	35 (0, 81)
PCR-confirmed RSV ARI				
All	101 (20, 202)	107 (21, 213)	122 (24, 245)	101 (47, 165)
Medically attended	61 (0, 141)	64 (0, 149)	73 (0, 171)	58 (21, 114)
Hospitalized	0 (0, 61)	21 (0, 64)	0 (0, 73)	6 (0, 17)

173 1 Acute respiratory illness (ARI) is defined as an acute onset of ≥ 2 of the following symptoms in the past 7 days: fever (self-reported
 174 feverishness, chills, or temperature $\geq 37.8^{\circ}\text{C}$), cough, sore throat, runny nose or nasal congestion, headache, myalgia (body or muscle aches
 175 and pain), or worsened shortness of breath.

176 2 Influenza-like illness (ILI) is defined as an ARI with measured fever of $\geq 37.8^{\circ}\text{C}$ (self-reported and/or measured by study staff) plus
 177 cough.

178 3 Medically-attended ARI is defined as an ARI with a self-reported medical visit to a doctor or other medical professional during the acute
 179 illness, including visits to outpatient medical clinic/offices, emergency rooms, or hospitals.

180 4 ARI-associated hospitalization is defined as a self-reported hospitalization (i.e. staying in the hospital for at least one night as a patient)
 181 during an ARI.

182 5 There were no hospitalizations with PCR-confirmed RSV infections.

183 6 Weighed with Jiangsu province population age and sex structure.
 184

185 **Appendix Table 8. Self-reported symptoms and symptom severity score among all acute respiratory**
 186 **illness (ARI), PCR-negative ARI, PCR-confirmed influenza ARI, and PCR-confirmed RSV ARI.**

	Acute respiratory illness (ARI) episodes						
	All ARI	ARI with PCR negative for both influenza and RSV	PCR-confirmed influenza ARI		PCR-confirmed RSV ARI		PCR-confirmed influenza vs. RSV ARI
	(N=822)	(N=705)	(N=93)	p-value ³	(N=20)	p-value ⁴	p-value ⁵
	n (%)	n (%)	n (%)		n (%)		
Symptoms							
Upper respiratory							
Sore throat	500 (61)	430 (61)	55 (59)	0.65	15 (75)	0.31	0.27
Runny nose or nasal congestion	738 (90)	636 (90)	80 (86)	0.27	18 (90)	>0.99	0.69
Lower respiratory							
Cough	787 (96)	678 (96)	89 (96)	0.77	20 (100)	>0.99	>0.99
Worsened shortness of breath	138 (17)	117 (17)	17 (18)	0.76	4 (20)	0.74	>0.99
Systemic							
Fever	490 (60)	413 (59)	63 (68)	0.14	11 (55)	0.61	0.26
Feverish	368 (45)	307 (44)	51 (55)	0.04	6 (30)	0.20	0.03
Chills	317 (39)	266 (38)	43 (46)	0.13	7 (35)	0.80	0.41
Measured temperature \geq 37.8°C	147 (18)	119 (17)	23 (25)	0.04	3 (15)	>0.99	0.33
Myalgia (Body or muscle aches and pain)	290 (35)	242 (34)	37 (40)	0.48	11 (55)	0.20	0.41
Headache	500 (61)	428 (61)	55 (59)	0.82	14 (70)	0.31	0.28
Case definitions							
Influenza-like illness (ILI)¹	139 (17)	114 (16)	22 (24)	0.04	3 (15)	>0.99	0.49
Illness with any respiratory symptoms	819 (100)	703 (100)	93 (100)	>0.99	20 (100)	>0.99	-
Illness with any upper respiratory symptoms	793 (96)	683 (97)	88 (95)	0.52	18 (90)	0.41	0.57
Illness with any lower respiratory symptoms	790 (96)	680 (96)	89 (96)	0.56	20 (100)	>0.99	>0.99
Illness with any systemic symptoms	686 (83)	585 (83)	80 (86)	0.65	17 (85)	0.74	0.71
	Mean (95% CI)	Mean (95% CI)	Mean (95% CI)	p-value ³	n (%)	p-value ⁴	p-value ⁵
Symptom severity score							
Symptoms							
Sore throat	0.8 (0.7, 0.8)	0.8 (0.7, 0.8)	0.7 (0.6, 0.8)	0.41	0.8 (0.6, 1.1)	0.58	0.40
Runny nose or nasal congestion	1.2 (1.2, 1.3)	1.2 (1.2, 1.3)	1.2 (1.1, 1.4)	0.87	1.3 (1.0, 1.6)	0.64	0.61
Cough	1.4 (1.4, 1.5)	1.4 (1.3, 1.4)	1.5 (1.3, 1.6)	0.31	1.8 (1.4, 2.1)	0.06	0.15
Worsened shortness of breath	0.2 (0.2, 0.2)	0.2 (0.2, 0.2)	0.2 (0.1, 0.4)	0.41	0.2 (0, 0.4)	0.96	0.62
Feverishness	0.5 (0.5, 0.6)	0.5 (0.5, 0.6)	0.7 (0.6, 0.9)	0.02	0.4 (0.1, 0.7)	0.19	0.03
Chills	0.5 (0.4, 0.5)	0.4 (0.4, 0.5)	0.6 (0.4, 0.7)	0.14	0.4 (0.2, 0.7)	0.64	0.29
Myalgia (Body or muscle aches and pain)	0.4 (0.4, 0.5)	0.4 (0.4, 0.4)	0.5 (0.3, 0.6)	0.32	0.7 (0.4, 0.9)	0.23	0.44
Headache	0.7 (0.7, 0.8)	0.7 (0.7, 0.8)	0.7 (0.6, 0.8)	0.87	0.9 (0.6, 1.2)	0.31	0.30
Symptom categories²							
All symptoms	0.7 (0.7, 0.7)	0.7 (0.7, 0.7)	0.8 (0.7, 0.8)	0.19	0.8 (0.7, 1.0)	0.44	0.76
Upper respiratory	1.0 (1.0, 1.0)	1.0 (1.0, 1.0)	1.0 (0.9, 1.1)	0.52	1.1 (0.8, 1.4)	0.58	0.46
Lower respiratory	0.8 (0.8, 0.8)	0.8 (0.8, 0.8)	0.9 (0.8, 1.0)	0.23	1.0 (0.8, 1.2)	0.12	0.37
Systemic	0.5 (0.5, 0.6)	0.5 (0.5, 0.6)	0.6 (0.5, 0.7)	0.08	0.6 (0.4, 0.8)	0.78	0.72

1 Influenza-like illness (ILI) is defined as an acute onset of measured fever of $\geq 37.8^\circ\text{C}$ plus cough.

2 Use of antipyretics was only asked from participants who reported a symptom of fever/feverish, those who did not have fever were assumed to have not taken any antipyretics.

Appendix

- 190 3 Compared between influenza virus PCR test-positive versus test-negative regardless of RSV PCR test results. p-value ≤ 0.05 is highlighted
191 in bold.
- 192 4 Compared between RSV PCR test-positive versus test-negative regardless of influenza virus PCR test results. p-value ≤ 0.05 is highlighted
193 in bold.
- 194 5 Compared between influenza virus PCR test-positive versus RSV PCR test-positive. p-value ≤ 0.05 is highlighted in bold.
- 195 6 All the information excepted measured body temperature $\geq 37.8^{\circ}\text{C}$ have $< 5\%$ unknown status, with unknown status assumed to be absent.
- 196

197 **Appendix Table 9. Self-reported symptom severity score among acute respiratory illness (ARI) episodes**
 198 **presenting the specific symptom.**

	Acute respiratory illness (ARI) episodes										
	All ARI		ARI with PCR negative for both influenza and RSV		PCR-confirmed influenza ARI		PCR-confirmed RSV ARI		PCR-confirmed influenza vs. RSV ARI		
	(N=822)		(N=705)		(N=93)		(N=20)				
	n ¹ (%)	Mean (95% CI)	n ¹ (%)	Mean (95% CI)	n ¹ (%)	Mean (95% CI)	P-value ²	n ¹ (%)	Mean (95% CI)	p-value ³	p-value ⁴
Symptom severity score											
Sore throat	500 (61)	1.3 (1.2, 1.3)	430 (61)	1.3 (1.2, 1.3)	55 (59)	1.2 (1.1, 1.3)	0.46	15 (75)	1.1 (1.0, 1.4)	0.58	0.80
Runny nose or nasal congestion	737 (90)	1.4 (1.3, 1.4)	635 (90)	1.4 (1.3, 1.4)	80 (86)	1.4 (1.3, 1.6)	0.56	18 (90)	1.4 (1.2, 1.7)	0.81	0.99
Cough	786 (96)	1.5 (1.4, 1.5)	677 (96)	1.4 (1.4, 1.5)	89 (96)	1.6 (1.4, 1.7)	0.21	20 (100)	1.8 (1.5, 2.1)	0.10	0.27
Worsened shortness of breath	138 (17)	1.2 (1.1, 1.3)	117 (17)	1.2 (1.1, 1.2)	17 (18)	1.4 (1.1, 1.6)	0.20	4 (20)	1.0 (1.0, 1.0)	≤0.001	0.03
Feverishness	367 (45)	1.2 (1.2, 1.3)	306 (43)	1.2 (1.1, 1.2)	51 (55)	1.3 (1.2, 1.4)	0.24	6 (30)	1.3 (1.0, 1.7)	0.84	0.90
Chills	317 (39)	1.2 (1.1, 1.2)	266 (38)	1.2 (1.1, 1.2)	43 (46)	1.2 (1.1, 1.3)	0.70	7 (35)	1.1 (1.0, 1.4)	0.97	0.93
Myalgia (Body or muscle aches and pain)	289 (35)	1.2 (1.1, 1.2)	241 (34)	1.2 (1.1, 1.2)	37 (40)	1.2 (1.1, 1.4)	0.39	11 (55)	1.2 (1.0, 1.5)	0.59	0.94
Headache	499 (61)	1.2 (1.2, 1.2)	427 (61)	1.2 (1.2, 1.2)	55 (59)	1.2 (1.1, 1.3)	0.95	14 (70)	1.3 (1.0, 1.6)	0.80	0.82

1 n represented number of participants who had the symptom and reported symptom severity score for that specific symptom.

2 Compared between influenza virus PCR test-positive versus test-negative regardless of RSV PCR test results. p-value ≤0.05 is highlighted in bold.

3 Compared between RSV PCR test-positive versus test-negative regardless of influenza virus PCR test results. p-value ≤0.05 is highlighted in bold.

4 Compared between influenza virus PCR test-positive versus RSV PCR test-positive. p-value ≤0.05 is highlighted in bold.

199
200
201
202
203
204
205

206 **Appendix Table 10. Self-reported medical care sought for PCR-confirmed influenza or RSV ARIs.**

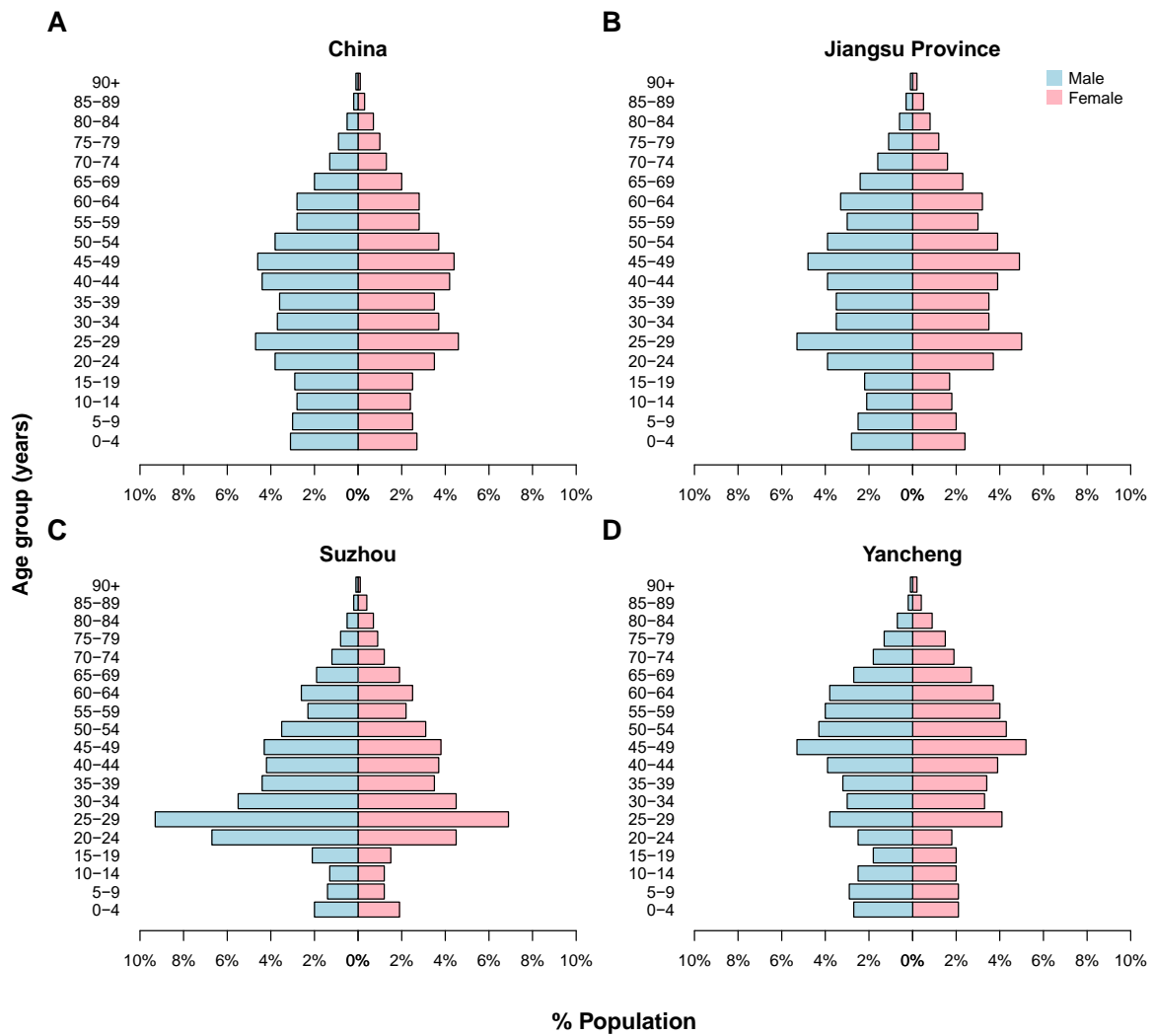
	Age (years)							
	60 - 69		70 - 79		80 - 89		Overall	
	n	% (95% CI)	n	% (95% CI)	n	% (95% CI)	n	% (95% CI)
All ARI (N=822), p-value = 0.36								
Hospitalized	5	1.6% (0.3, 3.1)	8	2.6% (1.0, 4.6)	9	4.5% (2.0, 7.6)	22	2.7% (1.6, 3.8)
Ambulatory care only	210	65.4% (60.4, 70.4)	190	62.7% (57.1, 68.0)	127	64.1% (57.1, 70.7)	528	64.1% (60.8, 67.3)
Did not seek medical attention	105	32.7% (27.7, 37.7)	103	34.0% (28.7, 39.6)	62	31.3% (24.7, 37.9)	272	32.8% (29.7, 36.0)
Influenza and RSV PCR-negative ARI (N=705), p-value = 0.03								
Hospitalized	2	0.7% (0, 1.8)	6	2.3% (0.8, 4.3)	9	5.3% (2.3, 9.4)	17	2.4% (1.3, 3.7)
Ambulatory care only	176	63.5% (57.4, 69.0)	156	60.7% (54.9, 66.5)	112	65.5% (58.5, 71.9)	445	63.0% (59.4, 66.7)
Did not seek medical attention	99	35.7% (30.0, 41.5)	95	37.0% (31.1, 43.2)	50	29.2% (22.8, 35.7)	246	34.6% (30.9, 38.0)
PCR-confirmed influenza ARI (N=93), p-value = 0.05								
Hospitalized	3	8.6% (0, 17.2)	1	2.7% (0, 8.1)	0	0% (0, 3.2)	4	4.3% (1.1, 8.6)
Ambulatory care only	29	82.9% (71.4, 94.3)	30	81.1% (67.6, 91.9)	13	61.9% (42.9, 81.0)	72	77.4% (68.8, 86.0)
Did not seek medical attention	3	8.6% (0, 20.0)	6	16.2% (5.4, 29.7)	8	38.1% (19.0, 57.1)	17	18.3% (10.8, 26.9)
PCR-confirmed RSV ARI (N=20), p-value = 0.74								
Hospitalized	0	0% (0, 15.0)	1	14.3% (0, 42.9)	0	0% (0, 15.0)	1	5.0% (0, 15.0)
Ambulatory care only	5	71.4% (42.9, 100)	3	42.9% (14.3, 85.7)	3	50.0% (16.7, 83.3)	11	55.0% (35.0, 75.0)
Did not seek medical attention	2	28.6% (0, 57.1)	2	28.6% (0, 71.4)	3	50.0% (16.7, 83.3)	7	35.0% (15.0, 55.0)

Note: There were statistically significant differences between age groups and medical care sought, among those with influenza and RSV-negative ARIs (p-value = 0.03), and among those with PCR-confirmed influenza ARIs (p-value = 0.05). Unlike in Table 4, here the categorization to “hospitalized”, “ambulatory care only” and “did not seek medical attention” was mutually exclusive.

207
208
209
210

211 **Appendix Figures**

212

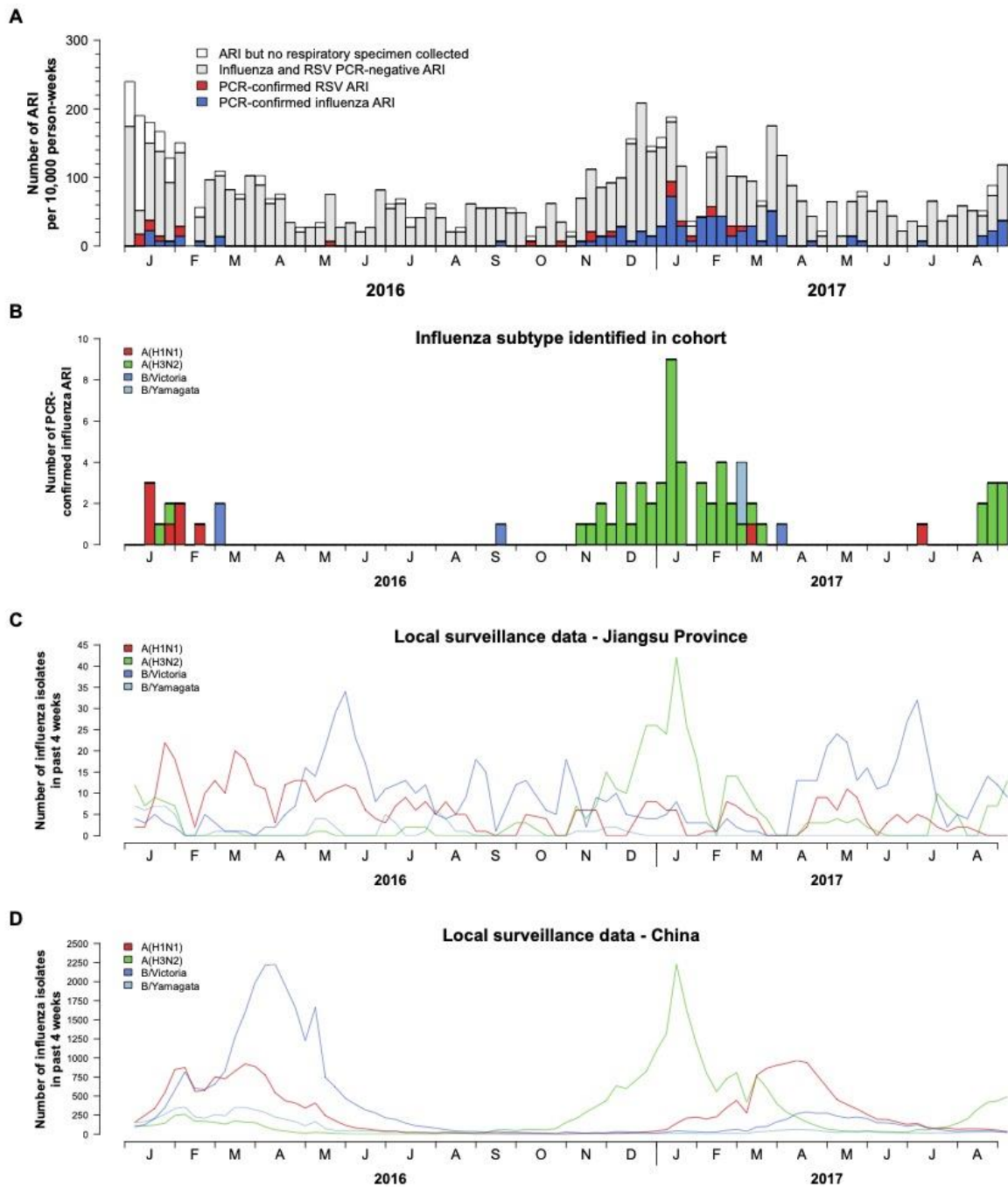


213

214 **Appendix Figure 1. 2015 population percentage by five-year age groups and gender for (A) China, (B)**
 215 **Jiangsu Province, (C) Suzhou and (D) Yancheng.**

216

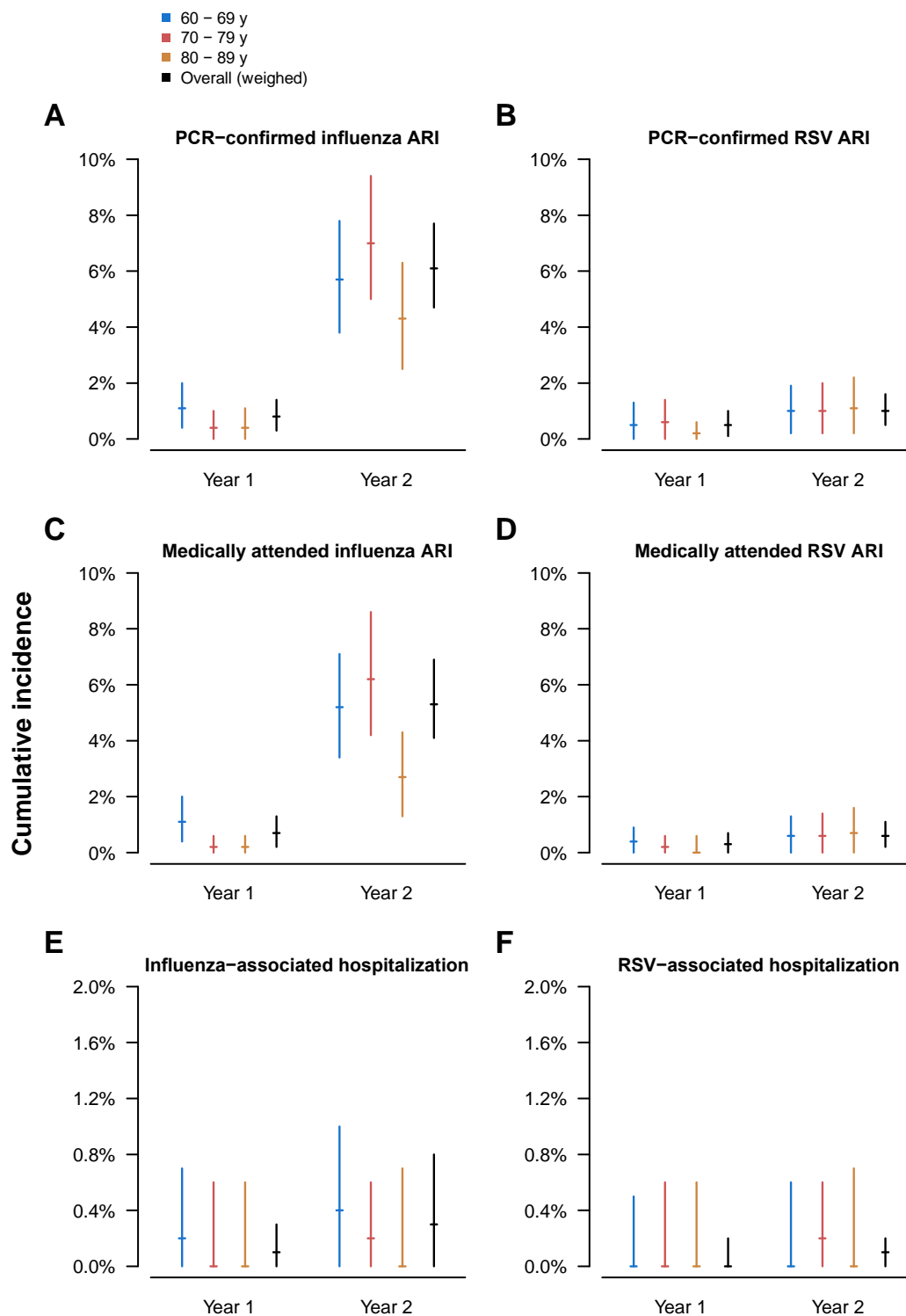
Appendix



217

218 **Appendix Figure 2. (A) Incidence of PCR-confirmed influenza acute respiratory illness (ARI) and RSV**
 219 **ARI per 10,000 person-weeks. (B) Weekly numbers of PCR-confirmed influenza ARI by influenza A**
 220 **virus subtypes or influenza B virus lineages. Number of influenza isolates in the past four weeks in (C)**
 221 **Jiangsu Province and (D) China as reported by Chinese Center for Disease Control and Prevention in**
 222 **Influenza Weekly Report.**

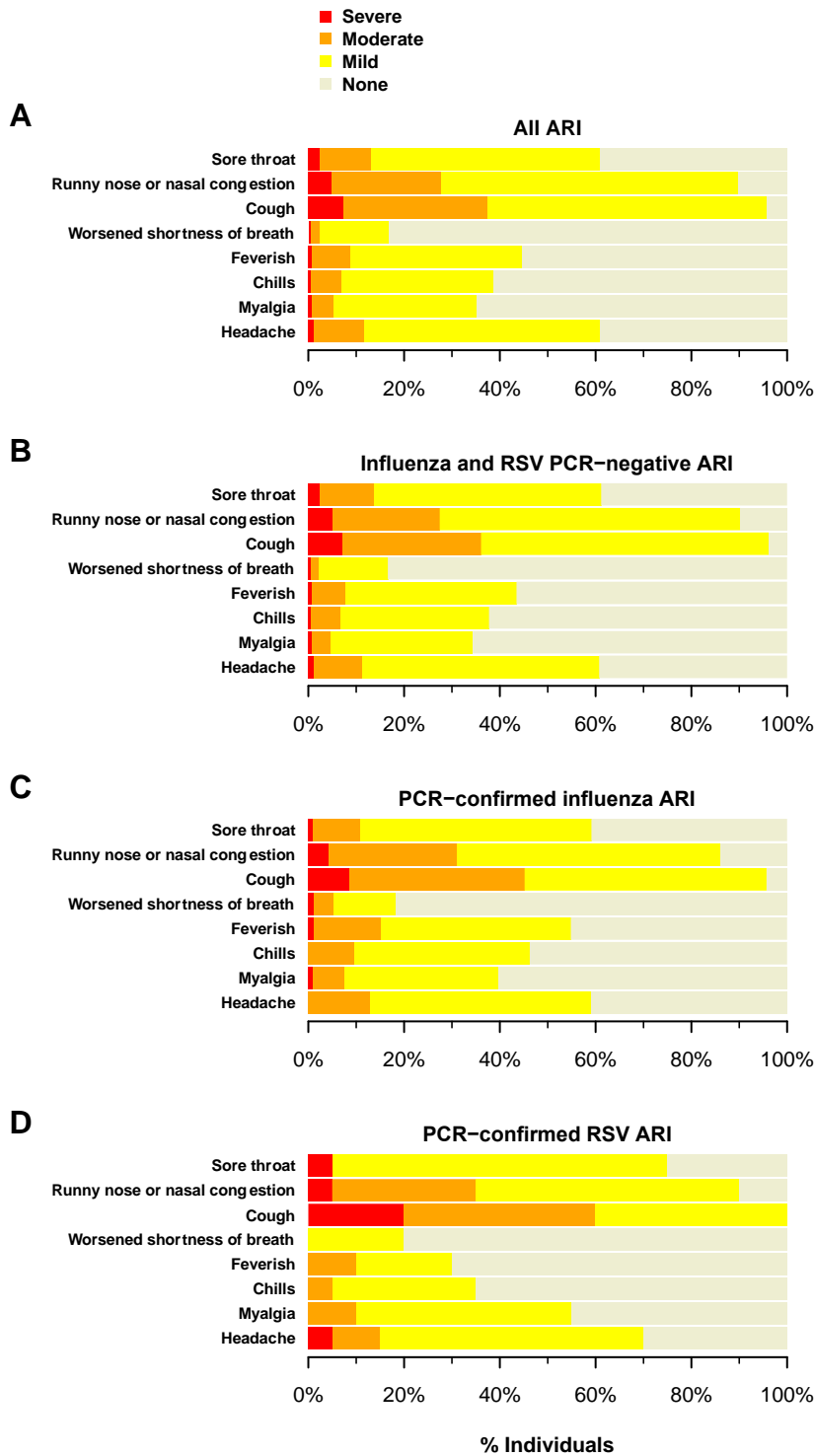
223



224
 225 **Appendix Figure 3. Cumulative incidences of (A) PCR-confirmed influenza ARI, (B) PCR-confirmed**
 226 **RSV ARI, (C) medically attended influenza ARI, (D) medically attended RSV ARI, (E) influenza-**
 227 **associated hospitalization, and (F) RSV-associated hospitalization, by study year and age group. Blue: 60–**
 228 **69 years old; Red: 70–79 years old; Orange: 80–89 years old; Black: All-ages and weighed with Jiangsu**
 229 **province population age and sex structure.**

230

Appendix

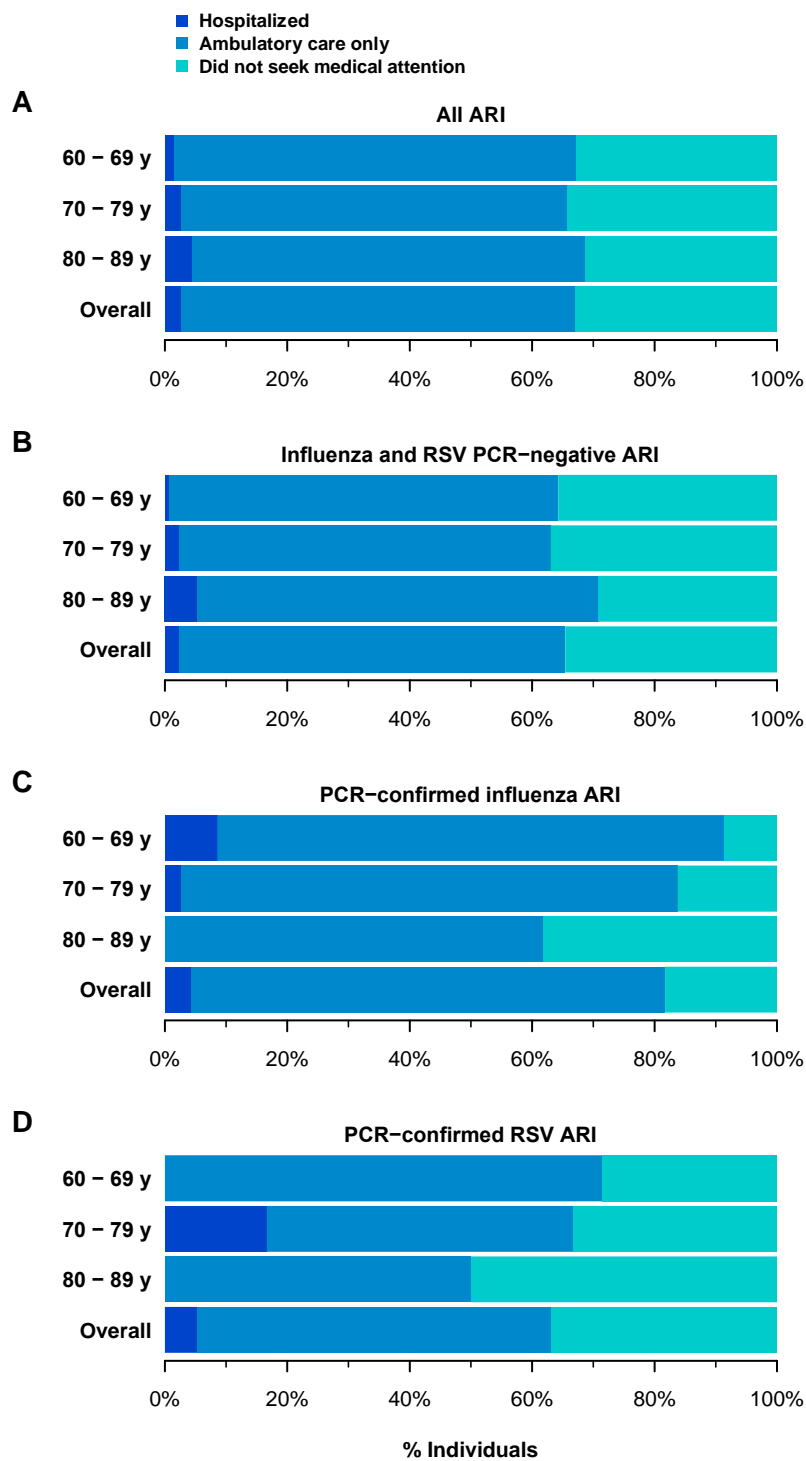


231

232 **Appendix Figure 4. Self-rated symptom severity for each symptom during ARI episodes among (A) all**
 233 **ARI, (B) influenza and RSV PCR-negative ARI, (C) PCR-confirmed influenza ARI and (D) PCR-**
 234 **confirmed RSV ARI. Red: Severe; Orange: Moderate; Yellow: Mild; Grey: Not present.**

235

Appendix



236

237 **Appendix Figure 5. Medical care utilization for ARI episodes by age group, among (A) all ARIs, (B) ARIs**
 238 **that were PCR-test negative for both influenza virus and RSV, (C) PCR-confirmed influenza ARIs and**
 239 **(D) PCR-confirmed RSV ARIs. Dark blue: Participant was hospitalized; Light blue: Participant sought**
 240 **ambulatory care only (and was not hospitalized); Cyan: Participant did not seek medical attention.**

241

242 **References**

- 243 1. Yu H, Alonso WJ, Feng L, et al. Characterization of regional influenza seasonality
244 patterns in China and implications for vaccination strategies: spatio-temporal modeling of
245 surveillance data. *PLoS Med* 2013; **10**(11): e1001552.
- 246 2. Obando-Pacheco P, Justicia-Grande AJ, Rivero-Calle I, et al. Respiratory Syncytial
247 Virus Seasonality: A Global Overview. *J Infect Dis* 2018; **217**(9): 1356-64.
- 248 3. Hayward AC, Fragaszy EB, Bermingham A, et al. Comparative community burden
249 and severity of seasonal and pandemic influenza: results of the Flu Watch cohort study.
250 *Lancet Respir Med* 2014; **2**(6): 445-54.
- 251 4. VanWormer JJ, Sundaram ME, Meece JK, Belongia EA. A cross-sectional analysis of
252 symptom severity in adults with influenza and other acute respiratory illness in the outpatient
253 setting. *BMC Infect Dis* 2014; **14**: 231.
- 254 5. Wu C, Gong Y, Wu J, et al. Chinese Version of the EQ-5D Preference Weights:
255 Applicability in a Chinese General Population. *PLoS One* 2016; **11**(10): e0164334.
- 256 6. Borson S, Scanlan J, Brush M, Vitaliano P, Dokmak A. The mini-cog: a cognitive
257 'vital signs' measure for dementia screening in multi-lingual elderly. *Int J Geriatr Psychiatry*
258 2000; **15**(11): 1021-7.
- 259 7. Cowling BJ, Xu C, Tang F, et al. Cohort profile: the China Ageing REspiratory
260 infections Study (CARES), a prospective cohort study in older adults in Eastern China. *BMJ*
261 *Open* 2017; **7**(10): e017503.
- 262 8. Searle SD, Mitnitski A, Gahbauer EA, Gill TM, Rockwood K. A standard procedure
263 for creating a frailty index. *BMC Geriatr* 2008; **8**: 24.
- 264 9. Harris PA, Taylor R, Thielke R, Payne J, Gonzalez N, Conde JG. Research electronic
265 data capture (REDCap)--a metadata-driven methodology and workflow process for providing
266 translational research informatics support. *J Biomed Inform* 2009; **42**(2): 377-81.
- 267 10. Fowler KB, Gupta V, Sullender W, et al. Incidence of symptomatic A(H1N1)pdm09
268 influenza during the pandemic and post-pandemic periods in a rural Indian community. *Int J*
269 *Infect Dis* 2013; **17**(12): e1182-5.
- 270 11. Tinoco YO, Azziz-Baumgartner E, Uyeki TM, et al. Burden of Influenza in 4
271 Ecologically Distinct Regions of Peru: Household Active Surveillance of a Community
272 Cohort, 2009-2015. *Clin Infect Dis* 2017; **65**(9): 1532-41.
- 273 12. National Notifiable Diseases Surveillance System (NNDSS). Downloads and
274 Resources: MMWR Weeks Calendars. 2018. <https://wwwn.cdc.gov/nndss/downloads.html>
275 (accessed October 18, 2016 2016).
- 276 13. Fowlkes A, Steffens A, Temte J, et al. Incidence of medically attended influenza
277 during pandemic and post-pandemic seasons through the Influenza Incidence Surveillance
278 Project, 2009-13. *Lancet Respir Med* 2015; **3**(9): 709-18.
- 279 14. Hanley JA, Lippman-Hand A. If nothing goes wrong, is everything all right?
280 Interpreting zero numerators. *JAMA* 1983; **249**(13): 1743-5.
- 281 15. Cowling BJ, Chan KH, Fang VJ, et al. Comparative epidemiology of pandemic and
282 seasonal influenza A in households. *N Engl J Med* 2010; **362**(23): 2175-84.
- 283 16. University of California. Global Administrative Areas. 2019. <https://gadm.org/>
284 (accessed October 21 2019).
- 285