

Supplementary Table 1. Nutrient intake in the BIOME study

	Prebiotic blend			Probiotic			Control			<i>p-values</i>	
	<i>Baseline</i>	<i>Endpoint</i>	Δ <i>baseline-end</i>	<i>Baseline</i>	<i>Endpoint</i>	Δ <i>baseline-end</i>	<i>Baseline</i>	<i>Endpoint</i>	Δ <i>baseline-end</i>	Prebiotic blend vs control	Prebiotic blend vs probiotic
	(n=116)	(n=107)		(n=113)	(n=107)		(n=120)	(n=110)			
Energy (kcal/d)	1738 ± 546	1770 ± 629	38 (-49, 125)	1628 ± 442	1801 ± 551	161 (69, 252)	1783 ± 527	1802 ± 609	12 (-88, 112)	0.92	0.16
Total carbohydrate (g/d)	173 ± 75	176 ± 84	4 (-6, 14)	170 ± 54	181 ± 59	9 (-1, 19)	186 ± 70	188 ± 83	1 (-11, 14)	0.94	0.77
Total carbohydrate (%EI/d)	40 ± 11	40 ± 10	0 (-1, 2)	42 ± 9	41 ± 9	-1 (-3, 0)	42 ± 10	41 ± 10	0 (-2, 1)	0.87	0.25
Total sugar (g/d)	65 ± 34	71 ± 47	5 (-1, 12)	66 ± 28	67 ± 29	1 (-4, 6)	75 ± 36	75 ± 44	0 (-7, 7)	0.46	0.64
Total sugar (%EI/d)	15 ± 6	16 ± 7	1 (0, 2)	16 ± 6	15 ± 5	-1 (-2, 0)	17 ± 6	17 ± 7	0 (-1, 1)	0.41	0.04
Total fat (g/d)	76 ± 32	74 ± 31	-3 (-8, 3)	71 ± 25	73 ± 28	2 (-3, 7)	76 ± 27	73 ± 30	-4 (-9, 2)	0.95	0.37
Total fat (%EI/d)	39 ± 9	37 ± 8	-2 (-4, -1)	39 ± 8	37 ± 8	-2 (-4, -1)	38 ± 8	36 ± 7	-2 (-3, -1)	0.96	0.99
Saturated fat (g/d)	27 ± 13	27 ± 13	0 (-3, 2)	24 ± 10	26 ± 11	1 (-1, 3)	27 ± 11	27 ± 13	-1 (-3, 1)	0.96	0.37
Saturated fat (%EI/d)	14 ± 4	14 ± 4	-1 (-1, 0)	13 ± 4	13 ± 3	0 (-1, 0)	14 ± 4	13 ± 3	-1 (-1, 0)	0.94	0.97
PUFA (g/d)	13 ± 7	12 ± 6	-1 (-2, 0)	12 ± 5	12 ± 5	0 (-1, 1)	13 ± 7	12 ± 5	-2 (-3, 0)	0.55	0.47
PUFA (%EI/d)	7 ± 3	6 ± 2	-1 (-1, 0)	7 ± 2	6 ± 2	-1 (-1, 0)	7 ± 3	6 ± 2	-1 (-1, 0)	0.99	0.86
MUFA (g/d)	29 ± 14	28 ± 13	-1 (-3, 1)	28 ± 11	29 ± 12	1 (-2, 3)	29 ± 11	28 ± 13	-1 (-3, 1)	1	0.52
MUFA (%EI/d)	15 ± 5	14 ± 4	-1 (-2, 0)	15 ± 4	14 ± 4	-1 (-2, 0)	15 ± 4	14 ± 4	-1 (-1, 0)	0.75	0.99
Protein (g/d)	75 ± 26	72 ± 27	-3 (-8, 2)	71 ± 23	71 ± 21	0 (-4, 4)	80 ± 32	73 ± 24	-6 (-11, -1)	0.56	0.49
Protein (%EI/d)	18 ± 4	17 ± 4	-1 (-2, 0)	18 ± 4	16 ± 4	-1 (-2, -1)	18 ± 5	17 ± 5	-1 (-2, 0)	1	0.72
Fibre (g/d)	17 ± 6	16 ± 7	0 (-2, 1)	17 ± 6	17 ± 5	-1 (-2, 0)	18 ± 6	17 ± 7	-2 (-3, 0)	0.34	0.73
Fibre (g/1000 kcal/d)	10 ± 3	9 ± 4	0 (-1, 0)	11 ± 3	10 ± 3	-1 (-2, -1)	11 ± 3	10 ± 3	-1 (-2, 0)	0.36	0.07
Alcohol (g/d)	15 ± 22	22 ± 28	9 (5, 12)	10 ± 13	26 ± 33	15 (10, 20)	11 ± 20	21 ± 24	9 (6, 12)	0.97	0.07
Alcohol (%EI/d)	6 ± 8	9 ± 10	3 (2, 4)	4 ± 5	9 ± 9	5 (4, 6)	5 ± 8	8 ± 9	3 (2, 4)	0.97	0.11

Data at baseline and endpoint are mean ± s.d., delta values are mean (95%CI). *P*-values are derived from an analysis of covariance (ANCOVA) with baseline values as a covariate. Values for fibre are derived from methods developed by the Association of Analytical Chemists (AOAC). Values at endpoint represent energy and macronutrient intake from background diet (not including intervention foods).

Kcal, kilocalories; %EI, percentage of total energy intake; MUFA, monounsaturated fatty acids; PUFA, polyunsaturated fatty acids; %EI, percentage of total energy intake

Supplementary Table 2. Secondary outcomes (categorical) in the BIOME study.

	Prebiotic blend		Probiotic		Control		<i>p-values</i>	
	Baseline (n = 116)	Endpoint (n = 107)	Baseline (n = 113)	Endpoint (n = 107)	Baseline (n = 120)	Endpoint (n = 110)	Prebiotic blend vs control	Prebiotic blend vs probiotic
Stool frequency n (%)								
Once a week or less	2 (1.7)	0 (0)	1 (0.0)	1 (0.9)	1 (0.8)	1 (0.8)		
Twice a week	1 (0.9)	3 (2.6)	2 (1.8)	1 (0.9)	1 (0.8)	3 (2.5)		
Three or four times a week	12 (10.3)	4 (3.5) ^a	13 (11.5)	14 (12.4)	24 (20)	17 (14.2) ^b		
Five or six times a week	20 (17.2)	9 (7.8)	21 (18.6)	15 (13.3)	16 (13.3)	17 (14.2)		
Once a day	58 (50)	58 (50)	52 (46)	53 (46.9)	54 (45)	47 (39.2)		
Twice a day	20 (17.2)	26 (22.4)	21 (18.6)	20 (17.7)	19 (15.8)	19 (15.8)		
Three times a day	2 (1.72)	6 (5.2)	3 (2.7)	3 (2.7)	5 (4.17)	6 (5)		
Four times a day	1 (0.9)	1 (0.9)	0 (0)	0 (0)	0 (0)	0 (0)	0.040	0.098
Skin improvement n (%)								
Yes		2 (1.9)		0 (0)		1 (0.9)		
No		11 (10.3)		8 (7.5)		11 (10)		
Unsure		5 (4.7)		2 (1.9)		1 (0.9)		
NA		89 (83.2)		97 (90.7)		97 (88.2)	0.347	0.251
Sleep Quality n (%)⁺								
Very good	7 (6.1)	13 (12.1)	10 (8.9)	14 (13.1)	18 (15)	13 (11.8)		
Fairly good	65 (56.5)	79 (73.8)	71 (62.8)	70 (65.4)	63 (52.5)	69 (62.7)		
Fairly bad	40 (34.8)	13 (12.1)	31 (27.4)	23 (21.5)	37 (30.8)	27 (24.5)		
Very bad	3 (2.6)	2 (1.9)	1 (0.9)	0 (0)	2 (1.67)	1 (0.9)	0.127	0.155

Sleep quantity n (%)⁺								
Less than 5hr	1 (0.9)	0 (0)	1 (0.9)	1 (0.9)	4 (3.33)	1 (0.9)		
5-6hr	29 (25.2)	18 (17)	24 (21.2)	19 (17.8)	21 (17.5)	17 (15.5)		
6-7hr	44 (38.3)	47 (44.3)	41 (36.3)	48 (44.9)	44 (36.7)	48 (43.6)		
7-8hr	33 (28.7)	32 (30.2)	41 (36.3)	31 (29)	44 (36.7)	37 (33.6)		
8-9hr	8 (7.0)	9 (8.5)	6 (5.3)	7 (6.5)	6 (5)	5 (4.6)		
9-10hr	0 (0)	0 (0)	0 (0)	0 (0)	1 (0.83)	1 (0.9)		
10-11hr	0 (0)	0 (0)	0 (0)	1 (0.94)	0 (0)	1 (0.9)		
							0.613	0.806

Data are number, n, and percentage, %. *P*-values are a result of chi-square test; where comparisons between groups were significant, data within each row that do not share the same superscript letter are significantly different ($p < 0.05$)

⁺ Data for one participant is missing from the prebiotic group at baseline (n = 115)

Supplementary Table 3. Secondary outcomes (continuous) in the BIOME study.

	Prebiotic blend					Probiotic					Control					<i>p</i> -values	
	n	Baseline	n	Endpoint	Δ baseline-end	n	Baseline	n	Endpoint	Δ baseline-end	n	Baseline	n	Endpoint	Δ baseline-end	Prebiotic blend vs control	Prebiotic blend vs probiotic
Metabolomics^a																	
ApoB (g/L) ⁺	106	0.91 (0.88, 0.95)	97	0.89 (0.86, 0.92)	-0.01 (-0.03, 0.01)	108	0.90 (0.87, 0.93)	101	0.89 (0.85, 0.92)	0.11 (-0.02, 0.02)	106	0.88 (0.85, 0.92)	100	0.87 (0.83, 0.91)	0.00 (-0.03, 0.02)	0.719	0.911
GlycA (mmol/L) ⁺	103	0.80 (0.78, 0.81)	95	0.79 (0.78, 0.81)	0.00 (-0.02, 0.02)	110	0.81 (0.79, 0.82)	103	0.80 (0.79, 0.82)	0.00 (-0.02, 0.01)	107	0.79 (0.78, 0.80)	100	0.80 (0.79, 0.82)	0.02 (0.00, 0.03)	0.513	0.526
HbA1c (mmol/mol)	100	33.88 (33.33, 34.43)	93	33.55 (33.0, 34.11)	-0.04 (-0.44, 0.37)	103	34.29 (33.78, 34.82)	90	34.58 (34.02, 35.14)	0.00 (-0.38, 0.38)	103	33.89 (33.31, 34.47)	96	34.01 (33.45, 34.57)	0.00 (-0.34, 0.34)	0.781	0.252
Triglycerides (mmol/L) ⁺	105	1.17 (1.0, 1.24)	96	1.09 (1.02, 1.07)	-0.04 (-0.13, 0.05)	107	1.09 (1.02, 1.16)	101	1.10 (1.03, 1.17)	0.01 (-0.06, 0.08)	107	1.11 (1.04, 1.19)	101	1.14 (1.05, 1.23)	0.06 (-0.03, 0.15)	0.220	0.239
Total cholesterol (mmol/L) ⁺	107	5.60 (5.44, 5.77)	98	5.64 (5.50, 5.79)	0.06 (-0.05, 0.17)	109	5.62 (5.48, 5.78)	102	5.62 (5.47, 5.78)	-0.01 (-0.13, 0.10)	108	5.53 (5.37, 5.70)	102	5.48 (5.31, 5.66)	-0.02 (-0.14, 0.10)	0.350	0.660
Omega-3 FAs ⁺	105	0.76 (0.72, 0.79)	96	0.75 (0.71, 0.79)	0.01 (-0.03, 0.04)	110	0.75 (0.71, 0.78)	103	0.76 (0.73, 0.80)	0.02 (-0.01, 0.04)	107	0.73 (0.70, 0.77)	102	0.73 (0.69, 0.77)	0.00 (-0.04, 0.04)	0.693	0.612
Total PUFA (mmol/L) ⁺	107	6.44 (6.29, 6.59)	98	6.42 (6.27, 6.57)	-0.02 (-0.14, 0.10)	110	6.33 (6.19, 6.47)	103	6.36 (6.23, 6.48)	0.02 (-0.07, 0.12)	109	6.37 (6.21, 6.52)	103	6.37 (6.20, 6.54)	0.05 (-0.09, 0.18)	0.834	0.676
ApoA1 (g/L) ⁺	106	1.74 (1.69, 1.79)	97	1.78 (1.73, 1.84)	0.04 (0.00, 0.08)	110	1.80 (1.75, 1.85)	103	1.84 (1.79, 1.89)	0.01 (-0.03, 0.05)	110	1.78 (1.72, 1.83)	104	1.80 (1.75, 1.86)	0.01 (-0.02, 0.04)	0.588	0.368
Ratio of ApoB:ApoA1 ⁺	106	0.52 (0.49, 0.54)	97	0.49 (0.46, 0.52)	-0.01 (-0.03, 0.00)	107	0.49 (0.47, 0.52)	101	0.48 (0.46, 0.51)	0.00 (-0.02, 0.01)	108	0.49 (0.47, 0.52)	102	0.48 (0.45, 0.51)	0.00 (-0.02, 0.01)	0.644	0.419
Total cholesterol minus HDL-C (mmol/L)	108	3.78 (3.63, 3.94)	99	3.74 (3.60, 3.89)	-0.01 (-0.10, 0.09)	109	3.74 (3.60, 3.88)	102	3.71 (3.56, 3.86)	-0.01 (-0.10, 0.08)	108	3.61 (3.44, 3.78)	102	3.57 (3.39, 3.75)	0.00 (-0.12, 0.12)	0.390	0.898
Remnant cholesterol (mmol/L) ⁺	108	1.64 (1.58, 1.71)	99	1.62 (1.56, 1.69)	0.00 (-0.04, 0.04)	109	1.63 (1.57, 1.69)	102	1.63 (1.57, 1.70)	0.02 (-0.03, 0.06)	107	1.57 (1.51, 1.64)	101	1.56 (1.49, 1.63)	0.01 (-0.04, 0.05)	0.453	0.984
VLDL-C (mmol/L) ⁺	106	0.62 (0.59, 0.65)	97	0.59 (0.55, 0.62)	-0.02 (-0.04, 0.00)	109	0.60 (0.57, 0.64)	102	0.60 (0.56, 0.63)	0.00 (-0.02, 0.02)	105	0.59 (0.55, 0.62)	99	0.57 (0.53, 0.61)	0.00 (-0.03, 0.03)	0.583	0.478
Clinical LDL-C (mmol/L)	108	3.02 (2.88, 3.16)	99	2.97 (2.84, 3.10)	-0.01 (-0.09, 0.08)	109	2.98 (2.86, 3.11)	102	2.93 (2.80, 3.07)	-0.03 (-0.11, 0.05)	105	2.92 (2.79, 3.06)	99	2.79 (2.65, 2.95)	-0.09 (-0.18, 0.00)	0.344	0.949
LDL-C (mmol/L) ⁺	108	2.14 (2.05, 2.23)	99	2.11 (2.03, 2.20)	0.00 (-0.06, 0.05)	109	2.11 (2.03, 2.19)	102	2.07 (1.99, 2.16)	-0.03 (-0.08, 0.03)	109	2.03 (1.91, 2.15)	103	2.00 (1.89, 2.11)	-0.02 (-0.09, 0.05)	0.380	0.699
HDL-C (mmol/L)	105	1.75 (1.69, 1.82)	96	1.80 (1.73, 1.88)	0.06 (0.01, 0.11)	110	1.81 (1.74, 1.89)	103	1.85 (1.78, 1.92)	0.00 (-0.05, 0.05)	110	1.81 (1.74, 1.88)	104	1.81 (1.74, 1.88)	-0.01 (-0.05, 0.03)	0.141	0.316

Concentration of VLDL particles (mmol/L) ⁺	106	0.00 (0.00, 0.00)	97	0.00 (0.00, 0.00)	0.00 (0.00, 0.00)	110	0.00 (0.00, 0.00)	103	0.00 (0.00, 0.00)	0.00 (0.00, 0.00)	108	0.00 (0.00, 0.00)	102	0.00 (0.00, 0.00)	0.00 (0.00, 0.00)	0.285	0.233
Concentration of LDL particles (mmol/L) ⁺	106	0.00 (0.00, 0.00)	97	0.00 (0.00, 0.00)	0.00 (0.00, 0.00)	110	0.00 (0.00, 0.00)	103	0.00 (0.00, 0.00)	0.00 (0.00, 0.00)	108	0.00 (0.00, 0.00)	102	0.00 (0.00, 0.00)	0.00 (0.00, 0.00)	0.547	0.925
Cholesterol in very large HDL (mmol/L)	106	0.10 (0.08, 0.12)	97	0.11 (0.09, 0.12)	0.01 (0.00, 0.01)	109	0.11 (0.10, 0.12)	102	0.12 (0.11, 0.13)	0.00 (-0.01, 0.01)	110	0.12 (0.11, 0.13)	104	0.11 (0.10, 0.12)	0.00 (-0.01, 0.00)	0.272	0.236
Concentration of HDL particles (mmol/L)	107	0.02 (0.02, 0.02)	98	0.02 (0.02, 0.02)	0.00 (0.00, 0.00)	110	0.02 (0.02, 0.02)	103	0.02 (0.02, 0.02)	0.00 (0.00, 0.00)	109	0.02 (0.02, 0.02)	104	0.02 (0.02, 0.02)	0.00 (0.00, 0.00)	0.341	0.25
Cholesterol in large HDL (mmol/L)	106	0.38 (0.29, 0.50)	97	0.39 (0.30, 0.52)	0.03 (0.01, 0.06)	110	0.46 (0.40, 0.53)	103	0.51 (0.46, 0.56)	0.00 (-0.03, 0.03)	109	0.50 (0.46, 0.55)	104	0.48 (0.43, 0.53)	-0.01 (-0.03, 0.01)	0.060	0.263
Cholesterol in medium HDL (mmol/L)	105	0.65 (0.63, 0.67)	96	0.68 (0.65, 0.71)	0.03 (0.01, 0.05)	110	0.66 (0.63, 0.69)	103	0.68 (0.66, 0.71)	0.00 (-0.02, 0.02)	110	0.66 (0.63, 0.68)	104	0.66 (0.64, 0.69)	0.00 (-0.01, 0.02)	0.112	0.211
Cholesterol in small HDL (mmol/L)	108	0.49 (0.48, 0.50)	99	0.49 (0.48, 0.50)	0.00 (-0.01, 0.01)	110	0.49 (0.49, 0.50)	103	0.49 (0.49, 0.50)	0.00 (-0.01, 0.01)	108	0.48 (0.47, 0.49)	102	0.48 (0.47, 0.49)	0.00 (-0.01, 0.01)	0.681	0.508
Cholesterol in very large VLDL (mmol/L) ⁺	107	0.03 (0.03, 0.04)	98	0.02 (0.02, 0.03)	0.00 (-0.01, 0.00)	110	0.03 (0.02, 0.03)	103	0.03 (0.02, 0.03)	0.00 (0.00, 0.00)	110	0.03 (0.02, 0.03)	104	0.02 (0.02, 0.03)	0.00 (0.00, 0.01)	0.304	0.349
Triglycerides in very large VLDL (mmol/L) ⁺	107	0.06 (0.04, 0.08)	98	0.04 (0.03, 0.06)	0.00 (-0.02, 0.01)	110	0.03 (0.02, 0.05)	103	0.03 (0.02, 0.05)	0.00 (-0.01, 0.01)	110	0.04 (0.02, 0.05)	104	0.03 (0.02, 0.05)	0.02 (0.00, 0.04)	0.380	0.369
Cholesterol in large VLDL (mmol/L) ⁺	106	0.06 (0.05, 0.07)	97	0.05 (0.04, 0.06)	-0.01 (-0.01, 0.00)	110	0.06 (0.05, 0.07)	103	0.05 (0.05, 0.06)	0.00 (-0.01, 0.01)	110	0.05 (0.05, 0.06)	104	0.05 (0.04, 0.06)	0.01 (0.00, 0.02)	0.455	0.225
Triglycerides in large VLDL (mmol/L) ⁺	107	0.15 (0.14, 0.17)	98	0.13 (0.12, 0.15)	-0.01 (-0.02, 0.01)	110	0.14 (0.12, 0.15)	103	0.12 (0.11, 0.14)	-0.01 (-0.02, 0.01)	109	0.14 (0.12, 0.16)	103	0.12 (0.10, 0.16)	0.01 (-0.01, 0.03)	0.740	0.572
Cholesterol in medium VLDL (mmol/L)	108	0.17 (0.16, 0.18)	99	0.16 (0.15, 0.17)	0.00 (-0.01, 0.00)	109	0.16 (0.15, 0.17)	102	0.16 (0.15, 0.17)	0.00 (-0.01, 0.00)	107	0.15 (0.14, 0.16)	101	0.14 (0.13, 0.16)	0.00 (-0.01, 0.00)	0.485	0.854
Triglycerides in medium VLDL (mmol/L) ⁺	106	0.27 (0.25, 0.29)	97	0.24 (0.23, 0.27)	-0.01 (-0.03, 0.01)	110	0.25 (0.23, 0.27)	103	0.24 (0.22, 0.26)	-0.01 (-0.03, 0.01)	110	0.26 (0.24, 0.28)	104	0.25 (0.23, 0.28)	0.02 (-0.01, 0.05)	0.495	0.652
Cholesterol in small VLDL (mmol/L)	108	0.14 (0.13, 0.15)	99	0.13 (0.12, 0.14)	0.00 (-0.01, 0.00)	109	0.13 (0.13, 0.14)	102	0.13 (0.12, 0.14)	0.00 (0.00, 0.01)	106	0.12 (0.11, 0.13)	100	0.12 (0.11, 0.13)	0.00 (0.00, 0.01)	0.252	0.374
Triglycerides in small VLDL (mmol/L) ⁺	106	0.14 (0.14, 0.15)	97	0.13 (0.13, 0.14)	-0.01 (-0.02, 0.00)	110	0.14 (0.13, 0.15)	103	0.13 (0.13, 0.15)	0.00 (-0.01, 0.01)	109	0.14 (0.13, 0.15)	103	0.14 (0.13, 0.15)	0.01 (0.00, 0.02)	0.106	0.344
Cholesterol in very small VLDL (mmol/L)	108	0.18 (0.17, 0.19)	99	0.18 (0.17, 0.19)	0.00 (-0.01, 0.00)	109	0.18 (0.18, 0.19)	102	0.19 (0.18, 0.19)	0.01 (0.00, 0.01)	106	0.18 (0.17, 0.18)	100	0.17 (0.17, 0.18)	0.00 (0.00, 0.00)	0.594	0.359
Triglycerides in very small VLDL (mmol/L) ⁺	107	0.07 (0.06, 0.07)	98	0.06 (0.06, 0.06)	0.00 (-0.01, 0.00)	110	0.07 (0.06, 0.07)	103	0.07 (0.07, 0.07)	0.00 (0.00, 0.01)	106	0.06 (0.06, 0.07)	100	0.07 (0.06, 0.07)	0.00 (0.00, 0.01)	0.006	0.016
Cholesterol in IDL (mmol/L)	107	0.98 (0.94, 1.02)	98	0.99 (0.95, 1.03)	0.02 (-0.01, 0.05)	109	1.00 (0.97, 1.04)	102	1.02 (0.98, 1.06)	0.01 (-0.01, 0.04)	108	0.97 (0.94, 1.01)	102	0.97 (0.93, 1.01)	0.00 (-0.03, 0.03)	0.586	0.789
Triglycerides in IDL (mmol/L) ⁺	107	0.11 (0.10, 0.11)	98	0.10 (0.10, 0.11)	0.00 (0.00, 0.00)	110	0.11 (0.10, 0.11)	103	0.11 (0.11, 0.11)	0.01 (0.00, 0.01)	105	0.10 (0.10, 0.10)	99	0.10 (0.10, 0.11)	0.01 (0.00, 0.01)	0.009	0.016

Male	29	97.0 (16.0)	27	94.0 (18.5)	0.00 (5.0)	27	98.0 (16.5)	23	92.0 (13.5)	-1.00 (10.5)	30	97.5 (15.7)	28	93.0 (15.5)	-2.00 (16.5)	0.336	0.297
Female	86	85.5 (18.7)	79	85.0 (16.0)	-1.00 (6.0)	86	84.0 (17.8)	84	85.0 (17.0)	-0.50 (4.0)	90	85.0 (18.7)	92	87.0 (18.0)	1.00 (5.75)	0.092	0.907
Weight^c (kg)	115	73.0 (22.7)	106	73.2 (21.9)	0.20 (1.89)	113	74.5 (22.0)	107	73.5 (21.9)	0.00 (1.84)	120	75.0 (17.1)	110	75.3 (19.7)	0.25 (1.95)	0.495	0.018
Stool consistency^c (BSFS)	116	4 (1)	107	4 (1)	0 (1)	113	4 (1)	107	4 (1)	0 (1)	120	4 (1)	110	4 (1)	0 (1.75)	0.334	0.943

^aData are geometric mean (95%CI) for baseline and endpoint values, and mean (95%CI) for delta values; *p*-values are the result of a linear mixed model, with time and treatment*time as fixed effects, and a random intercept for participant ID.

^bData were not normally distributed, but are presented as mean (SD), and mean (95%CI) for delta values to illustrate precise changes between the groups for each outcome (as median values did not indicate the direction); *p*-values are a result of a Mann-Whitney U-test on median change from baseline values.

^cData are median (IQR); *p*-values are a result of a Mann-Whitney U-test on median change from baseline values.

⁺*p*-values are the result of statistical tests on log-transformed data

ApoB, apolipoprotein B; GlycA, glycoprotein acetyls; HbA1c, glycated haemoglobin; FAs, fatty acids, PUFA, polyunsaturated fatty acids; ApoA1, apolipoprotein A1; BSFS, bristol stool form scale

Supplementary Table 4. Subgroup analysis of selected secondary outcomes in the BIOME study

	Prebiotic blend			Probiotic			Control			<i>p-values</i>							
	n	Baseline	n	Endpoint	Δ baseline-end	n	Baseline	n	Endpoint	Δ baseline-end	n	Baseline	n	Endpoint	Δ baseline-end	Prebiotic blend vs control	Prebiotic blend vs probiotic
Metabolomics^a																	
ApoB (g/L)	39	1.14 (1.11, 1.17)	33	1.07 (1.03, 1.12)	-0.06 (-0.09, -0.03)	34	1.17 (1.13, 1.22)	30	1.13 (1.09, 1.18)	-0.02 (-0.06, 0.02)	34	1.13 (1.10, 1.17)	29	1.14 (1.09, 1.19)	0.02 (-0.04, 0.07)	0.068	0.136
GlycA (mmol/L)	34	0.90 (0.88, 0.92)	29	0.85 (0.82, 0.89)	-0.04 (-0.08, -0.01)	38	0.92 (0.90, 0.94)	34	0.88 (0.85, 0.91)	-0.04 (-0.06, -0.01)	35	0.90 (0.88, 0.92)	33	0.90 (0.87, 0.94)	0.01 (-0.02, 0.04)	0.075	0.384
LDL-C (mmol/L)	39	2.79 (2.69, 2.89)	32	2.57 (2.45, 2.69)	-0.22 (-0.31, -0.13)	34	2.83 (2.73, 2.94)	30	2.65 (2.52, 2.79)	-0.15 (-0.25, -0.04)	36	2.76 (2.66, 2.86)	31	2.69 (2.54, 2.84)	-0.04 (-0.18, 0.09)	0.229	0.553
Triglycerides (mmol/L)	37	1.74 (1.61, 1.88)	32	1.53 (1.35, 1.72)	-0.14 (-0.36, 0.07)	32	1.80 (1.66, 1.95)	30	1.51 (1.36, 1.68)	-0.2 (-0.37, -0.03)	37	1.79 (1.66, 1.93)	33	1.71 (1.51, 1.95)	0.03 (-0.19, 0.26)	0.403	0.904
Symptom severity^b (domains)																	
Acid reflux	17	3.15 (1.28)	15	1.73 (0.70)	-1.37 (-1.87, -0.86)	13	2.46 (0.78)	10	1.30 (0.48, -0.90)	-0.9 (-1.31, -0.49)	10	2.50 (0.67)	10	1.90 (1.47)	-0.50 (-1.16, 0.16)	0.091	0.377
Abdominal pain	14	2.12 (0.36)	13	1.62 (0.71)	-0.51 (-0.76, -0.26)	21	2.33 (0.61)	20	1.40 (-.41, -0.87)	-0.87 (-1.13, -0.61)	17	2.59 (0.95)	14	1.74 (0.84)	-0.81 (-1.07, -0.55)	0.283	0.206
Indigestion	41	2.37 (0.50)	39	1.71 (0.61)	-0.67 (-0.82, -0.51)	34	2.61 (0.66)	31	1.73 (0.55, -0.88)	-0.88 (-1.07, -0.69)	31	2.56 (0.75)	28	2.1 (0.89)	-0.36 (-0.55, -0.16)	0.119	0.154
Diarrhoea	22	2.42 (0.58)	21	1.81 (1.81)	-0.63 (-0.95, -0.32)	12	3.11 (1.48)	11	1.70 (0.96, -1.27)	-1.27 (-2.24, -0.31)	18	2.43 (0.66)	16	1.92 (1.06)	-0.56 (-1.02, -0.11)	0.865	0.390
Constipation	22	2.26 (0.42)	21	1.56 (0.63)	-0.71 (-0.97, -0.46)	20	2.27 (0.41)	18	1.70 (0.95, -0.50)	-0.50 (-0.81, -0.19)	22	2.61 (0.67)	19	1.96 (1.19)	-0.54 (-0.90, -0.18)	0.816	0.440
Symptom severity^b (individual)																	
Hunger pains	34	2.35 (0.60)	31	1.39 (0.56)	-1.00 (-1.24, -0.76)	37	2.24 (0.55)	34	1.44 (0.61)	-0.76 (-0.93, -0.60)	39	2.54 (0.94)	34	1.71 (1.17)	-0.82 (-1.07, -0.58)	0.301	0.144
Rumbling stomach	42	2.36 (0.66)	38	1.39 (0.55)	-1.00 (-1.21, -0.79)	52	2.46 (0.87)	49	1.53 (0.71)	-0.92 (-1.14, -0.70)	49	2.39 (0.76)	44	1.82 (1.04)	-0.52 (-0.78, -0.27)	0.008	0.355
Bowel emptying	39	2.41 (0.68)	37	1.68 (0.71)	-0.76 (-1.02, -0.49)	44	2.43 (0.70)	41	1.63 (0.70)	-0.78 (-0.98, -0.58)	45	2.64 (1.23)	39	2.08 (1.24)	-0.46 (-0.67, -0.25)	0.168	0.970
Bloating	54	2.74 (0.89)	50	2.00 (1.20)	-0.74 (-1.01, -0.47)	59	2.66 (0.84)	54	1.76 (0.85)	-0.91 (-1.11, -0.71)	54	2.83 (1.06)	50	2.26 (1.35)	-0.48 (-0.77, -0.19)	0.357	0.366

Gas	72	2.58 (0.82)	67	1.88 (0.75)	-0.73 (-0.93, -0.53)	71	2.72 (0.97)	67	1.79 (0.86)	-0.94 (-1.16, -0.72)	60	2.55 (0.87)	55	2.04 (1.02)	-0.44 (-0.62, -0.25)	0.105	0.175
Abdominal pain	33	2.45 (0.67)	29	1.59 (0.82)	-0.90 (-1.14, -0.65)	38	2.84 (1.13)	37	1.51 (0.69)	-1.24 (-1.16, -0.91)	39	2.51 (1.00)	36	1.69 (0.86)	-0.72 (-0.95, -0.49)	0.485	0.263
Loose stool	31	2.29 (0.64)	29	1.48 (0.74)	-0.83 (-1.11, -0.55)	33	2.48 (1.03)	31	1.42 (0.72)	-1.03 (-1.38, -0.68)	34	2.29 (0.58)	31	1.45 (0.86)	-0.84 (-1.10, -0.58)	0.805	0.656
Hard stool	29	2.21 (0.49)	27	1.56 (0.85)	-0.67 (-0.95, -0.38)	28	2.25 (0.52)	26	1.58 (1.03)	-0.62 (-0.88, -0.35)	31	2.32 (0.60)	29	1.55 (1.09)	-0.72 (-1.05, -0.40)	0.422	0.881
Constipation	32	2.34 (0.55)	31	1.35 (0.71)	-1.00 (-1.24, -0.76)	28	2.25 (0.52)	26	1.62 (1.10)	-0.62 (-0.97, -0.26)	32	2.31 (0.64)	29	1.79 (1.05)	-0.45 (-0.78, -0.11)	0.033	0.114
Urgent movement	38	2.63 (1.08)	34	1.88 (1.07)	-0.82 (-1.07, -0.58)	27	2.52 (1.12)	24	1.50 (0.78)	-0.96 (-1.43, -0.49)	35	2.63 (1.11)	32	1.72 (1.33)	-0.97 (-1.22, -0.72)	0.216	0.699

^a Subgroup analysis was performed within the top tertile concentrations (using baseline values) of key measures of lipids and inflammation. Data are geometric mean (95%CI) for baseline and endpoint values, and mean (95%CI) for delta values; *p*-values are the result of a linear mixed model, with time and treatment*time as fixed effects, and a random intercept for participant ID. Data was log-transformed prior to statistical analysis.

^b Subgroup analysis was performed on participants who reported symptoms at baseline with a severity score ≥ 2 (individual symptoms and domains). Only individual symptoms that were reported by $\geq 25\%$ of participants at baseline were assessed to ensure adequate sample size ($n = 10$ symptoms). Data were not normally distributed, but are presented as mean (SD), and mean (95%CI) for delta values to illustrate precise changes between the groups for each outcome (as median values did not indicate the direction); *p*-values are a result of a Mann-Whitney U-test on median change from baseline values.

ApoB, apolipoprotein B; GlycA, glycoprotein acetyls

Supplementary Table 5. Postprandial interstitial glucose responses and time to next meal in the BIOME postprandial crossover sub-study.

	High CHO test meal	High CHO test meal + prebiotic blend	<i>p</i> -value
Glucose C-max (mmol/L) ^a	7.28 (6.65, 8.28)	7.50 (6.71, 8.54)	0.495
Glucose T-max (mins)	63 (19)	62 (23)	0.639
Glucose 2h iAUC (mmol/l x 2h)	140.1 (96.4)	130.5 (94.0)	0.165
Glucose 2-3h dip (%)	-2.06 (12.6)	-2.22 (13.9)	0.275
Time to next meal (mins)	75 (94)	87 (70)	0.116

Data are mean (s.d.) unless otherwise stated. *p*-value from linear mixed effects model analysis of log transformed data (fixed effects for meal, meal sequence and their interaction, and a random intercept for subject ID); ^aData are median (IQR), *p*-value from non-parametric test (paired Wilcoxon sign-rank test). n = 34 participants included in analyses (crossover design).

C-max, maximum glucose concentration; T-max. Time to maximum glucose concentration; iAUC, incremental area under the curve

Supplementary Table 6. Prebiotic blend (Daily30+) ingredients

Prebiotic blend ingredients
Onion, garlic, red beetroot, carrot, baobab fruit, buckthorn, thyme, parsley, rosemary, white mushroom, lions mane, reishu, chaga, shiitake, cordyceps, maitke, tremella, almonds, walnuts, hazelnuts, chicory root inulin, nutritional yeast, flax seed, sunflower seed, chia seed, pumpkin seed, hemp seed, grape seed, tumeric, cumin, red lentil flakes puffed quinoa

Supplementary Table 7. Nutrient composition of study treatments in the BIOME study

	Prebiotic blend (30g)	Control (28g)
Energy (kcal)	126.9	125.7
Fat (g)	7.7	3.8
of which saturates (g)	0.8	0.4
Carbohydrate (g)	5.3	19.3
of which sugars (g)	1.0	1.6
Fibre (g)	9.0	1.3
Protein (g)	5.5	3.0
Salt (g)	0.0	0.3

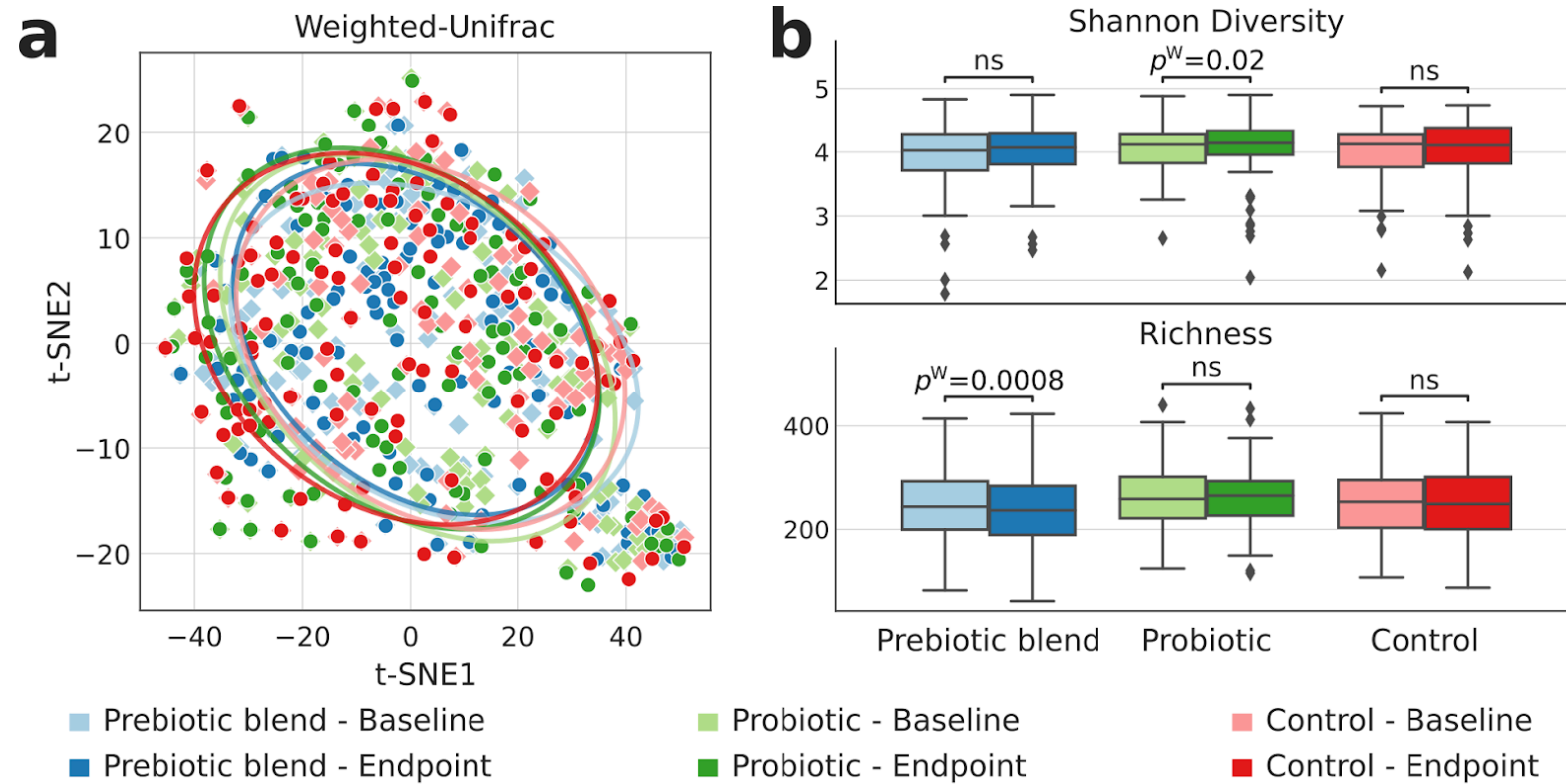
Kcal, kilocalories; g, grams

Supplementary Table 8. Nutrient composition of test meals in the postprandial sub-study

	High carbohydrate breakfast (control)	High carbohydrate breakfast + prebiotic blend
Energy (kcal)	342.5	469.4
Fat (g)	6.7	14.4
of which saturates (g)	1.4	2.1
Carbohydrate (g)	57.7	63.0
of which sugars (g)	2.9	3.8
Fibre (g)	2.9	11.9
Protein (g)	11.6	17.1
Salt (g)	1.4	1.4

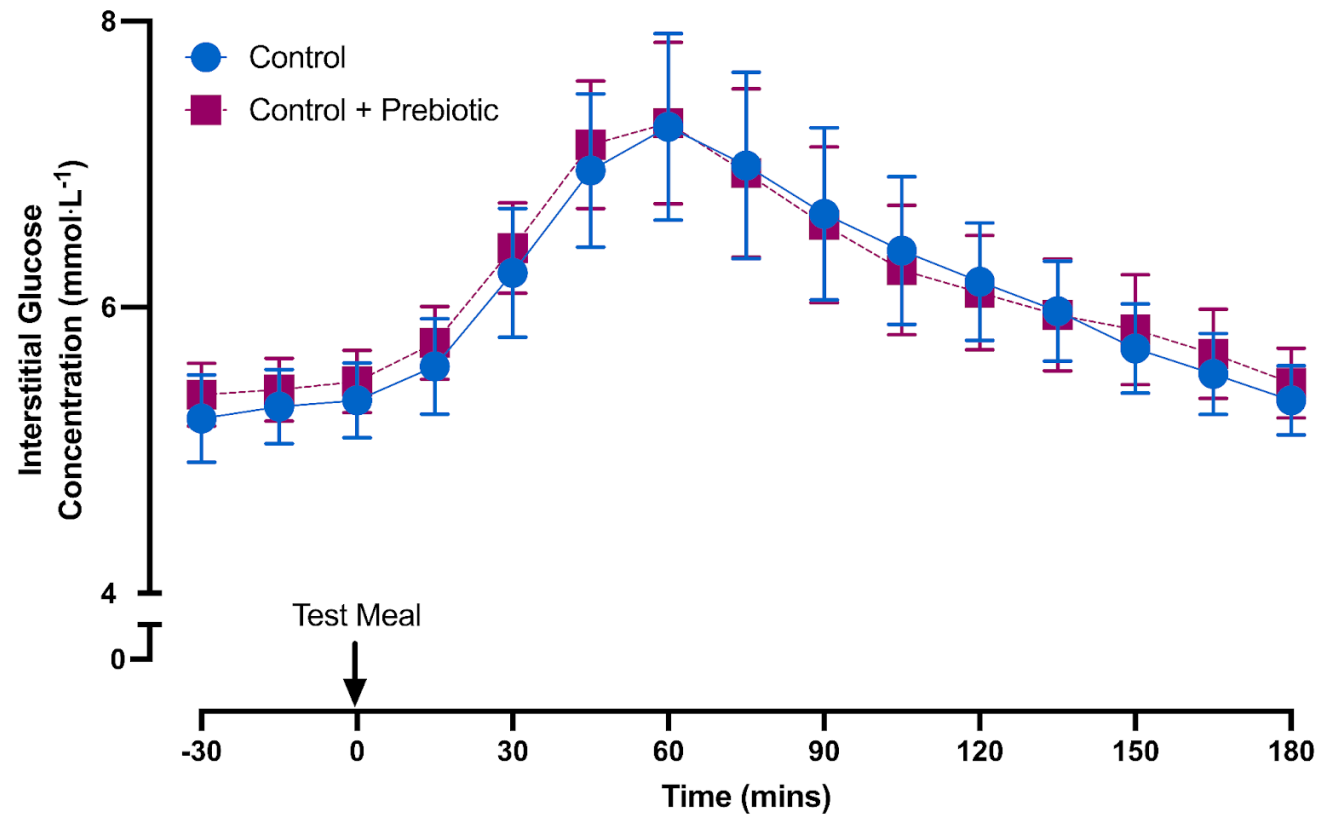
Kcal, kilocalories; g, grams

Supplementary Figure 1. Overview of microbiome diversity measures



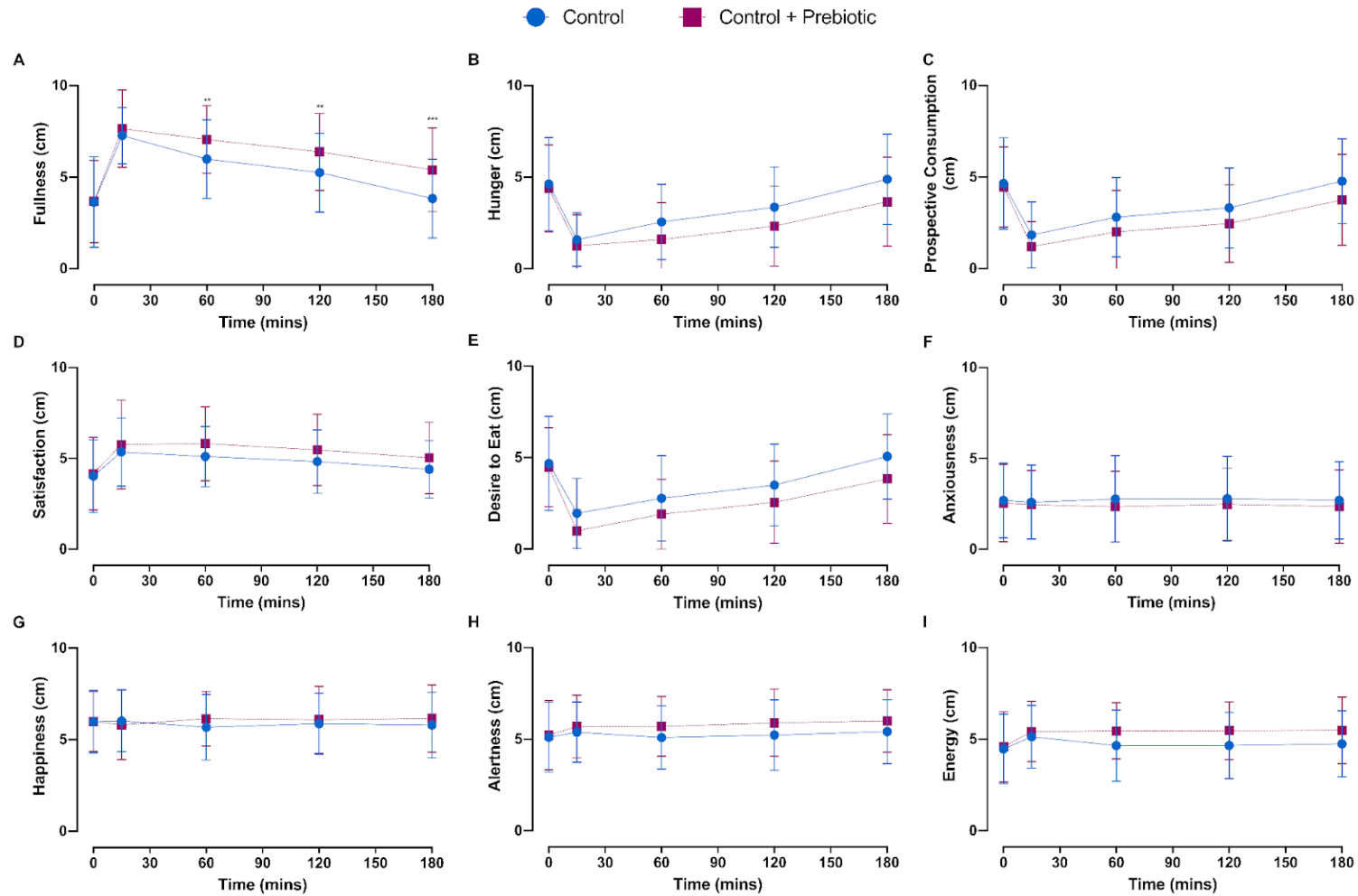
a Beta-diversity calculated with the weighted-UniFrac measure, shows no separation between the baseline microbiome composition across groups (PERMANOVA p -value = 0.584), while endpoint microbiome compositions show significant differences (PERMANOVA p -value = 0.020). PERMANOVA analysis performed within each group comparing baseline with endpoint microbiome composition, showed significant differences only for the prebiotic blend (prebiotic blend p -value = 0.0297, probiotic p -value = 0.3267, control p -value = 0.0594). **b** Alpha diversity calculated both with the Shannon's diversity index (top) and richness (bottom), showed that Shannon's diversity index tended to increase across all three groups (significant only in probiotic group, Wilcoxon's p -value = 0.0203), while richness showed a slightly lower number of detected species at endpoint across all three groups (significant only in the prebiotic blend group, Wilcoxon's p -value = 0.0008).

Supplementary Figure 2. Time-course analysis of postprandial glucose metrics.



Time course of postprandial interstitial glucose concentration (3h) following a standardized high carbohydrate meal alone (blue) and in combination with a prebiotic blend (pink). No significant difference was observed between the test meals (linear mixed-effects model, with fixed effects for timepoint, meal, and their interaction, and a random intercept for subject ID). n = 34 participants (crossover design).

Supplementary Figure 3. Time-course analysis of postprandial subjective outcomes



Time course of postprandial subjective feelings (3h) following a standardized high carbohydrate meal alone (blue) and in combination with a prebiotic blend (pink). There was a significant meal*time interaction for fullness ($p = 0.020$). No other significant interactions were observed between the test meals (linear mixed-effects model, with fixed effects for timepoint, meal, and their interaction, and a random intercept for subject ID). $n = 34$ participants included in analyses (crossover design).