

# Supplementary Material

## 1 Calculation of z-scores

We calculated age and sex dependent z-scores for body height, body weight, and BMI based on WHO [1], local [2], and IOTF [3] growth references. We used cubic interpolation of the published LMS-values to determine the exact LMS-values for each age in days, as described by Vidmar, Cole and Pan [4]. We used a formula from Cole and Green [5] to calculate z-scores ( $z$ ) with our measurement ( $x$ ) and the  $L(\lambda)$ ,  $M(\mu)$ , and  $S(\sigma)$  values, see formula (1):

$$z = \frac{\left(\frac{x}{\mu}\right)^\lambda - 1}{\lambda\sigma} \quad (1)$$

We used a correction method described by the WHO to correctly compute z-scores  $>3$  and  $<-3$  [6], see formulas (2), (3), (4), (5) and (6):

$$z^* = \begin{cases} z & \text{if } |z| \leq 3 \\ 3 + \left(\frac{x - SD3pos}{SD23pos}\right) & \text{if } z > 3 \\ -3 + \left(\frac{x - SD3neg}{SD23neg}\right) & \text{if } z < -3 \end{cases} \quad (2)$$

where

$$SD3pos = \mu(1 + \lambda * \sigma * 3)^{\frac{1}{\lambda}} \quad (3)$$

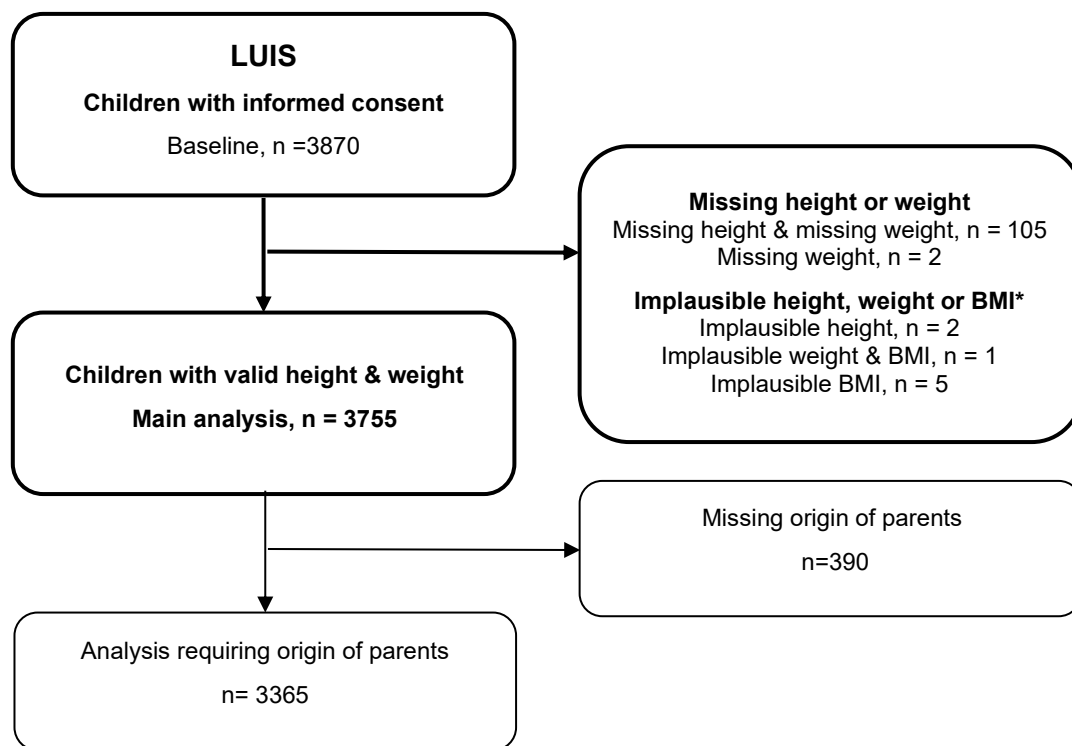
$$SD3neg = \mu(1 + \lambda * \sigma * (-3))^{\frac{1}{\lambda}} \quad (4)$$

$$SD23pos = \mu(1 + \lambda * \sigma * 3)^{\frac{1}{\lambda}} - \mu(1 + \lambda * \sigma * 2)^{\frac{1}{\lambda}} \quad (5)$$

$$SD23neg = \mu(1 + \lambda * \sigma * (-2))^{\frac{1}{\lambda}} - \mu(1 + \lambda * \sigma * (-3))^{\frac{1}{\lambda}} \quad (6)$$

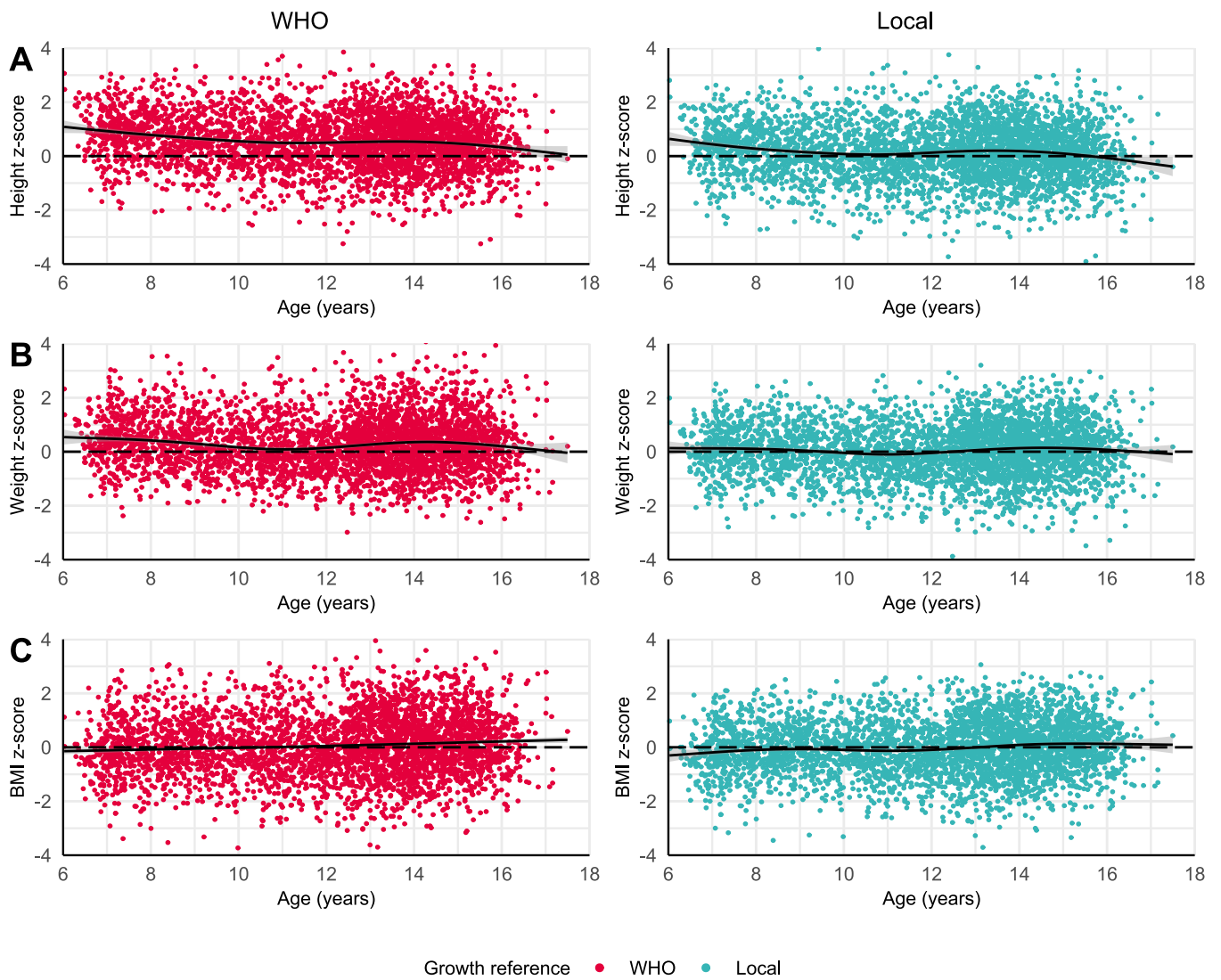
We adapted a method from Daymont et al. [7] to detect possible outliers resulting from recording or transcription errors by the LUIS study team: We recentered height, weight, and BMI z-scores around the median z-score at each age year to account for the possibility that the whole study sample could be different from the reference population. We excluded children with a recentered z-score of  $<-4$  or  $>4$  [8, 9]. We used the recentered z-scores only for data cleaning.

## 2 Supplementary Figures and Tables

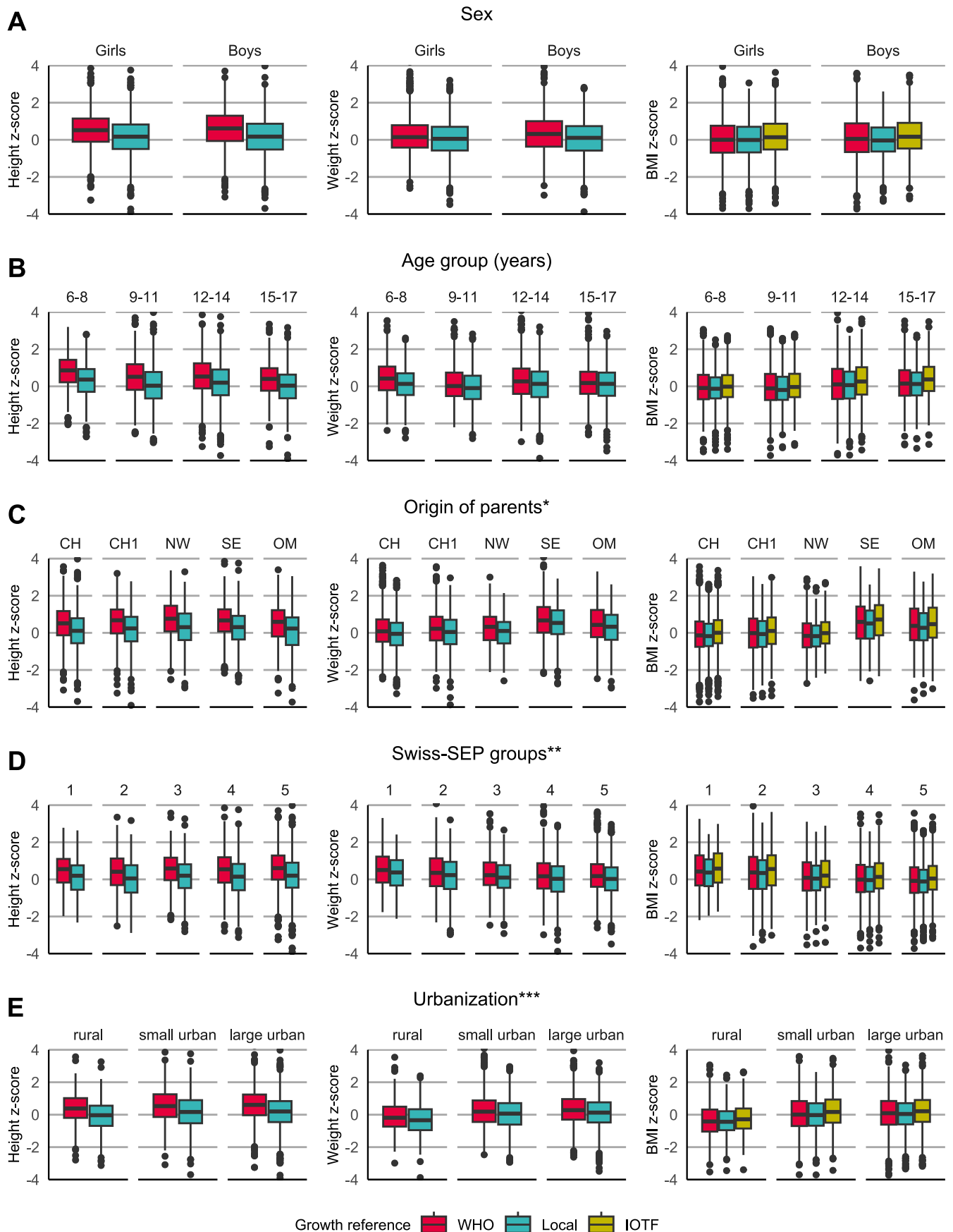


**Figure S1.** Flow diagram of the study population.

\* We excluded 8 children with recentered height, weight, or BMI z-scores  $<-4$  or  $>4$ .



**Figure S2.** Scatterplot of **A)** height, **B)** weight, and **C)** BMI z-scores by age for 3755 children of the LuftiBus in the School (LUIS) study based on WHO and local references. Mean z-scores and their 95% confidence intervals were locally estimated with penalized cubic B-Spline regression. BMI: Body mass index; WHO: World Health Organization.



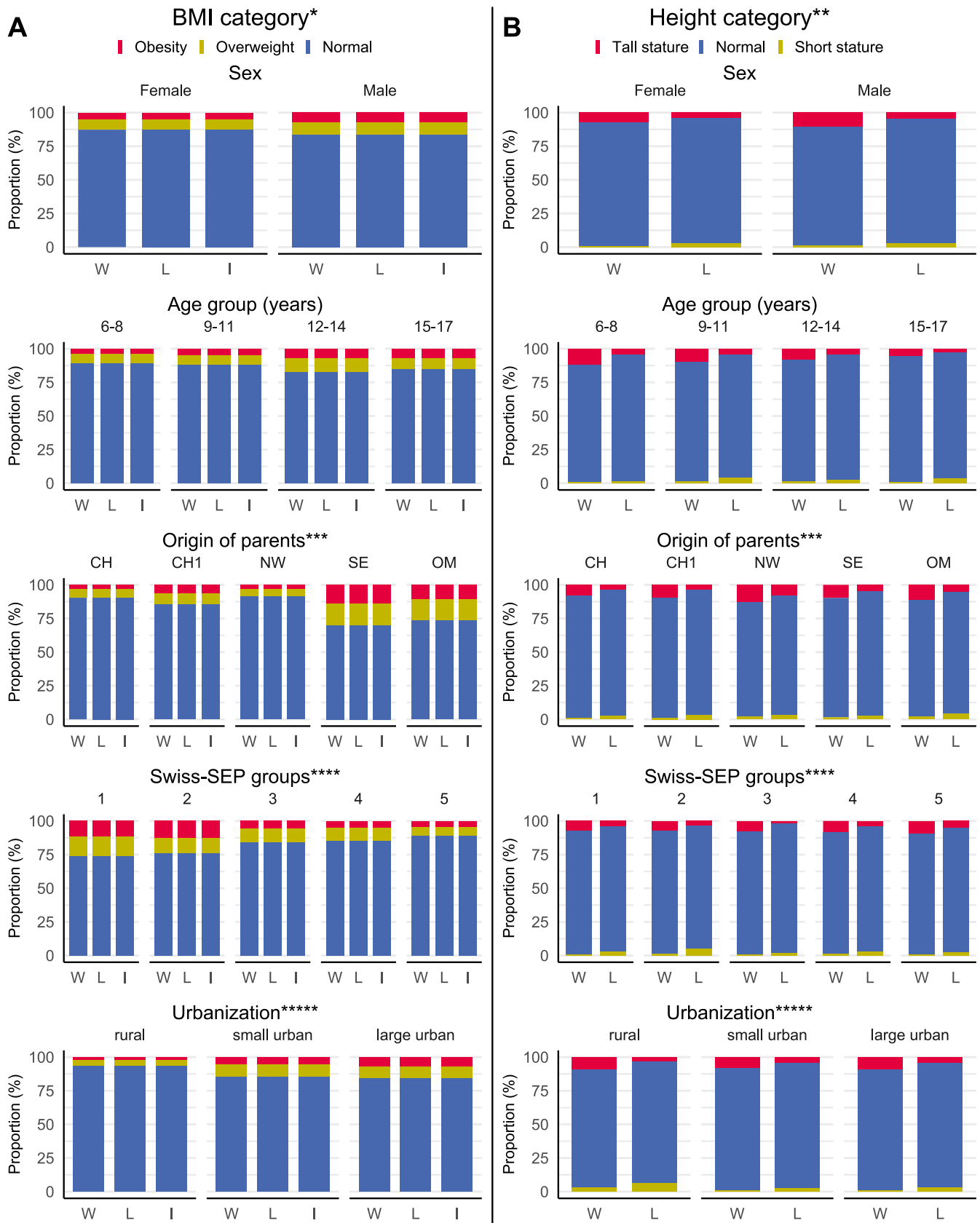
**Figure S3.** Height, weight, and BMI z-scores of 3755 children of the LuftiBus in the School (LUIS) study based on WHO, local, and IOTF references by **A)** sex, **B)** age, **C)** origin of parents, **D)** Swiss-SEP, and **E)** urbanization.

\* Origin of parents: CH: both parents from Switzerland; CH1: one parent from Switzerland; NW: both parents from Northern/Western Europe; SE: both parents from Southern/Eastern Europe; OM: Other/Mixed, parents from other or not from the same regions. For the origin of parents, we included  $n = 3365$  children.

\*\* Swiss-SEP: Swiss socioeconomic position version 2.0, census data from 2012 - 2015. The 5 groups are based on quintiles published by Panczak et al. [10]. A higher score relates to a higher socioeconomic position.

\*\*\* Urbanization: rural: rural areas; small urban: towns and suburbs; large urban: cities.

BMI: Body Mass Index; WHO: World Health Organization. IOTF: International Obesity Task Force



**Figure S4.** Prevalence of the **A)** BMI and **B)** height categories for 3755 children of the LuftiBus in the school (LUIS) study by sex, age, origin of parents, Swiss-SEP, and urbanization.

\* BMI categories were defined based on cutoff values of the WHO, of local, and IOTF, see supplementary Table S1. For readability we plotted obesity (obesity + severe obesity), overweight, and normal weight.

\*\* Height categories were defined by percentiles: short stature (<3<sup>rd</sup>), normal (3<sup>rd</sup>≤>97<sup>th</sup>), and tall stature (>97<sup>th</sup>).

\*\*\* Origin of parents: CH: both parents from Switzerland; CH1: one parent from Switzerland; NW: both parents from Northern/Western Europe; SE: both parents from Southern/Eastern Europe; OM: Other/Mixed, parents from other or not from the same regions. For the origin of parents, we included n = 3365 children.

\*\*\*\* Swiss-SEP: Swiss socioeconomic position version 2.0, census data from 2012 - 2015. The 5 groups are based on quintiles published by Panczak et al. [10]. A higher score relates to a higher socioeconomic position.

\*\*\*\*\* Urbanization: rural: rural areas; small urban: towns and suburbs; large urban: cities.

BMI: Body Mass Index; L: local; W: WHO, World Health Organization; I: IOTF, International Obesity Task Force.

**Table S1:**

Characteristics of children of the LuftiBus in the School (LUIS) study compared to the population of the local growth references.

	<b>LUIS Children N = 3755</b>	<b>Local N = 30,141</b>
<b>Sex, n (%)</b>		
Girls	1872 (50)	16,540 (55)
Boys	1883 (50)	13,601 (45)
<b>Age (years)</b>		
groups, n (%)		
6-7	409 (11)	2166 (18)**
8-9	533 (14)	1327 (11)
10-11	617 (16)	3528 (29)
12-13	1,076 (29)	1710 (14)
14-15	1,019 (27)	1983 (16)
16-17	101 (3)	1514 (12)
<b>Origin of parents*, n (%)</b>		
CH	1,933 (51)	9510 (32)
CH (one parent)	584 (16)	3674 (12)
DE, FR, AUT, SCAND, BENELUX	184 (5)	1265 (4)
IT, ES, PT	81 (2)	1176 (4)
BALKAN	257 (7)	2008 (7)
Turkey	18 (<1)	433 (1)
Other/Mixed/Missing	698 (19)	12,075 (40)
<b>Swiss-SEP 2.0***</b>		
Observed quartiles		
1	<61.4	<58.8
2	61.4 – 69.5	58.8 – 64.9
3	69.5 – 76.5	64.9 – 72.3
4	>76.5	>72.3

\* Origin of parents: CH (both parents): both parents from Switzerland; CH (one parent): one parent from Switzerland; DE, FR, AUT, SCAND, BENELUX: both parents from Germany, France, Austria, Denmark, Norway, Finland, Sweden, Island, Belgium, the Netherlands, or Luxembourg; IT, ES, PT: both parents from Italy, Spain, or Portugal; BALKAN: both parents from Albania, Bosnia and Herzegovina, Bulgaria, Croatia, Kosovo, Montenegro, North Macedonia, Romania, Serbia, or Slovenia; Turkey: both parents from Turkey; Other/Mixed/Missing: parents from other or not from the same regions, or missing origin of parents.

\*\* The population of the local growth references also included 14,784 children below 6 years and 3129 children above 18 years, hence the number of schoolchildren between 6-18 years was 12,228. The percentages for the age groups are calculated based on the 12,228 schoolchildren.

\*\*\* Swiss-SEP: Swiss socioeconomic position version 2.0 published by Panczak et al. [10], census data from 2012 - 2015. Reported are the quartiles of Swiss-SEP values observed in the LUIS data and observed in the population of the local growth references [2]. For example, the highest 25% of Swiss-SEP values were >76.5 in LUIS, while the highest 25% of Swiss-SEP values were >72.3 in the population of the local growth references.

**Table S2:**

Mean height, weight, and BMI z-scores based on WHO, local, and IOTF growth references by sex, age, origin of parents, Swiss-SEP, and urbanization; and the fit of z-scores to a standard normal distribution.

		n	WHO Anderson Darling*			Local Anderson Darling*			IOTF Anderson Darling*		
			mean (sd)	A <sup>2</sup>	p-value	mean (sd)	A <sup>2</sup>	p-value	mean (sd)	A <sup>2</sup>	p-value
<b>Sex</b>											
<b>Girls</b>	Height z-score	1872	0.52 (0.98)	250.1	<0.001	0.15 (1.02)	23.0	<0.001	NA	NA	NA
	Weight z-score	1872	0.21 (0.97)	37.7	<0.001	0.05 (0.99)	4.2	0.007	NA	NA	NA
	BMI z-score	1872	0.02 (1.10)	5.3	0.002	-0.02 (1.04)	1.0	0.356	0.15 (1.05)	21.6	<0.001
<b>Boys</b>	Height z-score	1883	0.60 (1.02)	333.7	<0.001	0.16 (1.03)	25.8	<0.001	NA	NA	NA
	Weight z-score	1883	0.35 (1.05)	97.8	<0.001	0.07 (0.98)	6.7	<0.001	NA	NA	NA
	BMI z-score	1883	0.10 (1.17)	23.1	<0.001	0.00 (0.97)	1.0	0.358	0.23 (1.04)	45.0	<0.001
<b>Age</b>											
<b>6-8</b>	Height z-score	678	0.82 (0.92)	232.1	<0.001	0.32 (0.95)	37.6	<0.001	NA	NA	NA
	Weight z-score	678	0.44 (0.95)	62.0	<0.001	0.12 (0.89)	8.2	<0.001	NA	NA	NA
	BMI z-score	678	-0.04 (1.06)	2.3	0.063	-0.11 (0.94)	5.5	0.002	0.01 (0.97)	1.0	0.368
<b>9-11</b>	Height z-score	881	0.51 (1.04)	106.8	<0.001	0.06 (1.07)	2.4	0.054	NA	NA	NA
	Weight z-score	881	0.12 (0.94)	6.7	<0.001	-0.08 (0.95)	3.6	0.014	NA	NA	NA
	BMI z-score	881	-0.05 (1.11)	5.0	0.003	-0.13 (0.97)	8.4	<0.001	0.03 (0.98)	1.5	0.182
<b>12-14</b>	Height z-score	1663	0.53 (1.01)	236.2	<0.001	0.19 (1.03)	31.8	<0.001	NA	NA	NA
	Weight z-score	1663	0.31 (1.05)	67.8	<0.001	0.10 (1.02)	10.8	<0.001	NA	NA	NA
	BMI z-score	1663	0.13 (1.19)	28.5	<0.001	0.05 (1.05)	4.7	0.004	0.29 (1.09)	66.7	<0.001
<b>15-17</b>	Height z-score	533	0.39 (0.95)	41.4	<0.001	0.00 (1.01)	0.43	0.820	NA	NA	NA
	Weight z-score	533	0.24 (1.03)	13.7	<0.001	0.09 (1.01)	3.6	0.014	NA	NA	NA
	BMI z-score	533	0.18 (1.10)	8.8	<0.001	0.12 (0.99)	4.2	0.007	0.40 (1.04)	39.6	<0.001
<b>Origin of parents**</b>											
<b>CH</b>	Height z-score	1933	0.52 (0.98)	256.2	<0.001	0.11 (1.00)	11.9	<0.001	NA	NA	NA
	Weight z-score	1933	0.14 (0.94)	18.9	<0.001	-0.07 (0.93)	8.0	<0.001	NA	NA	NA
	BMI z-score	1933	-0.10 (1.06)	11.7	<0.001	-0.15 (0.95)	23.9	<0.001	0.04 (0.97)	2.9	0.033
<b>CH1</b>	Height z-score	584	0.61 (1.02)	111.9	<0.001	0.19 (1.04)	13.9	<0.001	NA	NA	NA
	Weight z-score	584	0.28 (1.04)	19.8	<0.001	0.04 (1.02)	1.1	0.298	NA	NA	NA
	BMI z-score	584	0.01 (1.16)	4.7	0.004	-0.06 (1.03)	1.5	0.166	0.13 (1.06)	5.3	0.002
<b>NW</b>	Height z-score	203	0.77 (1.06)	58.6	<0.001	0.34 (1.10)	12.5	<0.001	NA	NA	NA
	Weight z-score	203	0.27 (0.92)	7.2	<0.001	0.03 (0.90)	0.8	0.447	NA	NA	NA
	BMI z-score	203	-0.12 (1.03)	2.4	0.058	-0.17 (0.91)	4.1	0.007	-0.01 (0.94)	0.8	0.453
<b>SE</b>	Height z-score	382	0.65 (0.98)	80.4	<0.001	0.27 (1.00)	14.2	<0.001	NA	NA	NA
	Weight z-score	382	0.71 (1.08)	87.1	<0.001	0.48 (1.00)	46.9	<0.001	NA	NA	NA
	BMI z-score	382	0.59 (1.18)	67.6	<0.001	0.45 (1.02)	42.9	<0.001	0.70 (1.08)	91.9	<0.001
<b>OM</b>	Height z-score	263	0.53 (1.14)	37.8	<0.001	0.15 (1.16)	5.1	0.002	NA	NA	NA
	Weight z-score	263	0.50 (1.06)	29.9	<0.001	0.28 (1.02)	12.1	<0.001	NA	NA	NA
	BMI z-score	263	0.39 (1.23)	23.7	<0.001	0.28 (1.07)	12.4	<0.001	0.50 (1.12)	34.6	<0.001
<b>Swiss-SEP groups***</b>											
<b>1: 0 - 49</b>	Height z-score	138	0.49 (0.98)	17.3	<0.001	0.12 (1.00)	1.6	0.151	NA	NA	NA
	Weight z-score	138	0.55 (1.04)	19.2	<0.001	0.35 (0.98)	9.0	<0.001	NA	NA	NA
	BMI z-score	138	0.49 (1.15)	16.7	<0.001	0.37 (1.00)	10.2	<0.001	0.63 (1.05)	26.6	<0.001
<b>2: 40 - 56</b>	Height z-score	459	0.41 (1.03)	38.1	<0.001	0.03 (1.05)	1.1	0.292	NA	NA	NA
	Weight z-score	459	0.43 (1.15)	36.9	<0.001	0.21 (1.11)	12.6	<0.001	NA	NA	NA
	BMI z-score	459	0.35 (1.29)	37.7	<0.001	0.24 (1.14)	18.8	<0.001	0.49 (1.19)	58.1	<0.001
<b>3: 57 - 62</b>	Height z-score	431	0.55 (0.92)	67.1	<0.001	0.15 (0.95)	5.8	<0.001	NA	NA	NA
	Weight z-score	431	0.33 (0.99)	19.8	<0.001	0.11 (0.96)	3.3	0.016	NA	NA	NA
	BMI z-score	431	0.13 (1.15)	5.3	0.002	0.05 (1.01)	1.0	0.394	0.25 (1.05)	13.4	<0.001
<b>4: 62 - 69</b>	Height z-score	841	0.52 (1.03)	108.2	<0.001	0.12 (1.06)	6.7	0.001	NA	NA	NA
	Weight z-score	841	0.23 (1.03)	18.0	<0.001	0.01 (1.00)	0.5	0.828	NA	NA	NA
	BMI z-score	841	0.03 (1.16)	5.5	0.002	-0.04 (1.03)	1.0	0.366	0.17 (1.06)	12.0	<0.001
<b>5: 70 - 100</b>	Height z-score	1886	0.62 (1.00)	359.3	<0.001	0.21 (1.02)	41.7	<0.001	NA	NA	NA
	Weight z-score	1886	0.24 (0.96)	47.4	<0.001	0.02 (0.94)	3.6	0.014	NA	NA	NA
	BMI z-score	1886	-0.03 (1.07)	5.3	0.002	-0.10 (0.94)	11.5	<0.001	0.09 (0.97)	7.1	<0.001
<b>Urbanization****</b>											
<b>Rural</b>	Height z-score	247	0.39 (1.06)	19.7	<0.001	-0.05 (1.08)	0.9	0.425	NA	NA	NA
	Weight z-score	247	-0.09 (0.97)	2.4	0.056	-0.32 (0.99)	12.5	<0.001	NA	NA	NA
	BMI z-score	247	-0.38 (1.13)	18.1	<0.001	-0.41 (1.00)	20.5	<0.001	-0.25 (1.02)	8.6	<0.001
<b>Small urban</b>	Height z-score	1635	0.54 (0.99)	230.6	<0.001	0.16 (1.02)	21.1	<0.001	NA	NA	NA
	Weight z-score	1635	0.26 (1.02)	44.0	<0.001	0.05 (0.99)	2.8	0.036	NA	NA	NA
	BMI z-score	1635	0.06 (1.13)	10.5	<0.001	-0.01 (1.00)	0.3	0.901	0.21 (1.04)	33.7	<0.001
<b>Large urban</b>	Height z-score	1873	0.60 (1.00)	334.3	<0.001	0.18 (1.02)	32.6	<0.001	NA	NA	NA
	Weight z-score	1873	0.35 (0.99)	100.7	<0.001	0.12 (0.96)	17.6	<0.001	NA	NA	NA
	BMI z-score	1873	0.13 (1.13)	20.4	<0.001	0.04 (1.00)	2.5	<0.001	0.23 (1.04)	47.4	<0.001

\* Anderson-Darling test to assess goodness of fit of the observed z-score distribution based on the WHO, local, or IOTF growth references to a standard normal distribution, A<sup>2</sup>: test statistic for goodness of fit, Color coding: green: best fit in respective group.

\*\* Origin of parents: CH: both parents from Switzerland; CH1: one parent from Switzerland; NW: both parents from Northern/Western Europe; SE: both parents from Southern/Eastern Europe; OM: Other/Mixed, parents from other or not from the same regions. For the origin of parents, we included n = 3365 children.

\*\*\* Swiss-SEP: Swiss socioeconomic position version 2.0, census data from 2012 - 2015. The 5 groups are based on quintiles published by Panczak et al. [10]. A higher Swiss-SEP relates to a higher socioeconomic position.

\*\*\*\* Urbanization: rural: rural areas; small urban: towns and suburbs; large urban: cities.

BMI: Body mass index; IOTF: International Obesity Task Force; NA: not applicable; sd: standard deviation; WHO: World Health Organization.

**Table S3:**

Linear regression of height z-scores based on local references on age, sex, origin of parents, Swiss-SEP, and urbanization.

Height z-score									
	Univariable model				Multivariable model				
	$\beta$ -coefficient (95% CI)	std. error	p-value	adj. R <sup>2</sup>	$\beta$ -coefficient (95% CI)	std. error	p-value	adj. R <sup>2</sup>	
<b>Age</b>									
(1 year increase)	-0.03 (-0.04, -0.01)	0.01	<0.001	0.005	-0.03 (-0.05, -0.02)	0.008	<0.001		
<b>Sex</b>									
Girls	ref	ref	ref		NA	NA	NA		
Boys	0.01 (-0.06, 0.07)	0.03	0.815	0	NA	NA	NA		
<b>Origin of parents*</b>									
Switzerland (both parents)	ref	ref	ref		ref	ref	ref		
Switzerland (one parent)	0.08 (-0.01, 0.18)	0.05	0.086		0.06 (-0.03, 0.16)	0.05	0.188		
Northern/Western Europe	0.23 (0.08, 0.38)	0.08	0.003		0.19 (0.04, 0.33)	0.08	0.015	0.013	
Southern/Eastern Europe	0.16 (0.04, 0.27)	0.06	0.006		0.22 (0.10, 0.34)	0.06	<0.001		
Other/Mixed	0.04 (-0.10, 0.17)	0.07	0.585	0.003	0.08 (-0.06, 0.21)	0.07	0.263		
<b>Swiss-SEP**</b>									
(per increment of 20)	0.10 (0.04, 0.16)	0.04	<0.001	0.003	0.06 (-0.02, 0.14)	0.04	0.125		
<b>Urbanization***</b>									
Rural	ref	ref	ref		ref	ref	ref		
Small urban	0.21 (0.07, 0.35)	0.07	0.003		0.27 (0.12, 0.42)	0.08	<0.001		
Large urban	0.23 (0.09, 0.37)	0.07	0.001	0.002	0.20 (0.05, 0.35)	0.08	0.010		

\* Origin of parents: For the univariable model on origin of parents and for the multivariable model we included n = 3365 children.

\*\* Swiss-SEP: Swiss socioeconomic position version 2.0, census data from 2012 - 2015. A higher score relates to a higher socioeconomic position.

\*\*\* Urbanization: rural: rural areas; small urban: towns and suburbs; large urban: cities.

adj: adjusted; NA: not applicable, not included in multivariable model based on results of univariable model. ref: reference.



**Table S4:**

Linear regression of weight z-scores based on local references on age, sex, origin of parents, Swiss-SEP, and urbanization.

	Weight z-score							
	Univariable model				Multivariable model			
	$\beta$ -coefficient (95% CI)	std. error	p-value	adj. R <sup>2</sup>	$\beta$ -coefficient (95% CI)	std. error	p-value	adj. R <sup>2</sup>
<b>Age</b>								
(1 year increase)	0.01 (-0.00, 0.02)	0.01	0.221	0	NA	NA	NA	
<b>Sex</b>								
Female	ref	ref	ref		NA	NA	NA	
Male	0.01 (-0.05, 0.07)	0.03	0.732	0	NA	NA	NA	
<b>Origin of parents*</b>								
Switzerland (both parents)	ref	ref	ref		ref	ref	ref	
Switzerland (one parent)	0.12 (0.03, 0.21)	0.05	0.013		0.10 (0.01, 0.19)	0.05	0.034	
Northern/Western Europe	0.10 (-0.03, 0.24)	0.07	0.141		0.10 (-0.04, 0.24)	0.07	0.167	0.044
Southern/Eastern Europe	0.55 (0.45, 0.66)	0.05	<0.01		0.49 (0.38, 0.60)	0.06	<0.001	
Other/Mixed	0.36 (0.23, 0.48)	0.06	<0.01	0.034	0.30 (0.17, 0.43)	0.06	<0.001	
<b>Swiss-SEP**</b>								
(per increment of 20)	-0.12 (-0.18, -0.007)	0.03	<0.001	0.004	-0.08 (-0.15, -0.01)	0.04	0.019	
<b>Urbanization***</b>								
Rural	ref	ref	ref		ref	ref	ref	
Small urban	0.37 (0.24, 0.50)	0.07	<0.001		0.39 (0.25, 0.53)	0.07	<0.001	
Large urban	0.45 (0.32, 0.58)	0.07	<0.001	0.012	0.42 (0.27, 0.56)	0.07	<0.001	

\* Origin of parents: For the univariable model on origin of parents and for the multivariable model we included n = 3365 children.

\*\* Swiss-SEP: Swiss socioeconomic position version 2.0, census data from 2012 - 2015. A higher score relates to a higher socioeconomic position.

\*\*\* Urbanization: rural: rural areas; small urban: towns and suburbs; large urban: cities.

adj: adjusted; NA: not applicable, not included in multivariable model based on results of univariable model. ref: reference.

**Table S5:**

Linear regression of BMI z-scores based on local references on age, sex, origin of parents, Swiss-SEP, and urbanization.

BMI z-score									
	Univariable model				Multivariable model				
	$\beta$ -coefficient (95% CI)	std. error	p-value	adj. R <sup>2</sup>	$\beta$ -coefficient (95% CI)	std. error	p-value	adj. R <sup>2</sup>	
<b>Age</b>									
(1 year increase)	0.04 (0.02, 0.05)	0.01	<0.001	0.009	0.01 (-0.01, 0.02)	0.01	0.342		
<b>Sex</b>									
Female	ref	ref	ref		NA	NA	NA		
Male	0.01 (-0.05, 0.08)	0.03	0.702	0	NA	NA	NA		
<b>Origin of parents*</b>									
Switzerland (both parents)	ref	ref	ref		ref	ref	ref		
Switzerland (one parent)	0.09 (0.00, 0.18)	0.05	0.046		0.07 (-0.02, 0.17)	0.05	0.106		
Northern/Western Europe	-0.02 (-0.16, 0.12)	0.07	0.805		-0.00 (-0.15, 0.14)	0.07	0.945	0.057	
Southern/Eastern Europe	0.61 (0.50, 0.72)	0.05	<0.001		0.49 (0.38, 0.61)	0.06	<0.001		
Other/Mixed	0.43 (0.31, 0.56)	0.06	<0.001	0.043	0.34 (0.22, 0.47)	0.07	<0.001		
<b>Swiss-SEP**</b>									
(per increment of 20)	-0.22 (-0.28, -0.16)	0.03	<0.001	0.004	-0.16 (-0.24, -0.09)	0.04	<0.001		
<b>Urbanization***</b>									
Rural	ref	ref	ref		ref	ref	ref		
Small urban	0.40 (0.27, 0.53)	0.07	<0.001		0.43 (0.29, 0.58)	0.07	<0.001		
Large urban	0.45 (0.32, 0.59)	0.07	<0.001	0.012	0.46 (0.31, 0.60)	0.07	<0.001		

\* Origin of parents: For the univariable model on origin of parents and for the multivariable model we included n = 3365 children.

\*\* Swiss-SEP: Swiss socioeconomic position version 2.0, census data from 2012 - 2015. A higher score relates to a higher socioeconomic position.

\*\*\* Urbanization: rural: rural areas; small urban: towns and suburbs; large urban: cities.

adj: adjusted; BMI: body mass index; NA: not applicable, not included in multivariable model based on results of univariable model. ref: reference.

**Table S6.** Cutoff values for the BMI and height categories based on WHO, local, and IOTF growth references. Number of children and proportions in BMI and height categories in 3755 children of the LuftiBus in the school (LUIS) study.

BMI category	WHO			Local				IOTF			
	cutoff*	n	% (95% CI)	cutoff*		n	% (95% CI)	cutoff*		n	% (95% CI)
				Girls	Boys			Girls	Boys		
Severe obesity	>99.5	62	1.7 (1.3, 2.1)	>99.3	>98.8	22	0.6 (0.4, 0.9)	>99.8	>99.8	11	0.3 (0.2, 0.5)
Obesity	>97	171	4.6 (3.9, 5.3)	>96.8	>95.5	131	3.5 (2.9, 4.1)	>98.6	>98.9	94	2.5 (2.0, 3.1)
Overweight	>90	318	8.5 (7.6, 9.4)	>82.9	>78.9	568	15.1 (14.0, 16.3)	>89.3	>90.5	472	12.6 (11.5, 13.7)
Normal weight	≤90	3204	85.3 (84.1, 86.4)	≤82.9	≤78.9	3034	80.8 (79.5, 82.0)	≤89.3	≤90.5	3178	84.6 (83.4, 85.8)
Cohen's Kappa (95%CI)**		ref				0.74 (0.71, 0.76)				0.73 (0.71, 0.76)	

Height category	WHO			Local			NA
	cutoff*	n	% (95% CI)	cutoff*	n	% (95% CI)	
Tall stature	>97	330	8.8 (7.9, 9.8)	>97	330	4.3 (3.7, 5.0)	NA
Normal	≤97	3372	90.1 (89.1, 91.0)	≤97	3372	92.8 (91.9, 93.6)	
Short stature	<3	41	1.1 (0.8, 1.5)	<3	41	2.9 (2.4, 3.5)	
Cohen's Kappa (95%CI)**		ref			0.60 (0.56, 0.65)		

\* Cutoffs for BMI and height categories are given in percentiles. We used the cutoffs published by WHO, local, and IOTF growth references to define BMI categories.

\*\* Cohen's Kappa to quantify agreement of BMI and height categories between WHO compared to local or compared to IOTF growth references. We interpreted Cohen's Kappa between 0.61-0.80 as substantial and 0.41-0.60 as moderate agreement, according to Landis and Koch [11].

BMI: Body mass index; IOTF: International Obesity Task Force; NA: not applicable; ref: reference; WHO: World Health Organization.

**Table S7.** Agreement of BMI and height classification\* by WHO compared to local and IOTF growth references by sex, age, origin of parents, and Swiss-SEP.

			WHO Cohen's Kappa** (95% CI)	Local Cohen's Kappa** (95% CI)	IOTF Cohen's Kappa** (95% CI)
<b>Sex</b>					
<b>Female</b>	BMI category	1872	ref	0.74 (0.70, 0.78)	0.76 (0.72, 0.80)
	Height category	1872	ref	0.64 (0.57, 0.70)	NA
<b>Male</b>	BMI category	1883	ref	0.74 (0.70, 0.77)	0.71 (0.67, 0.74)
	Height category	1883	ref	0.57 (0.51, 0.63)	NA
<b>Age (years)</b>					
<b>6-8</b>	BMI category	678	ref	0.70 (0.63, 0.77)	0.72 (0.65, 0.79)
	Height category	678	ref	0.53 (0.42, 0.64)	NA
<b>9-11</b>	BMI category	881	ref	0.76 (0.71, 0.82)	0.63 (0.57, 0.70)
	Height category	881	ref	0.57 (0.48, 0.66)	NA
<b>12-14</b>	BMI category	1663	ref	0.75 (0.71, 0.78)	0.77 (0.74, 0.80)
	Height category	1663	ref	0.66 (0.60, 0.73)	NA
<b>15-17</b>	BMI category	533	ref	0.72 (0.65, 0.78)	0.71 (0.65, 0.78)
	Height category	533	ref	0.56 (0.42, 0.70)	NA
<b>Origin of parents***</b>					
<b>Switzerland (both parents)</b>	BMI category	1933	ref	0.72 (0.68, 0.76)	0.74 (0.70, 0.78)
	Height category	1933	ref	0.60 (0.53, 0.67)	NA
<b>Switzerland (one parent)</b>	BMI category	584	ref	0.79 (0.73, 0.85)	0.71 (0.64, 0.77)
	Height category	584	ref	0.53 (0.41, 0.65)	NA
<b>Northern/Western Europe</b>	BMI category	203	ref	0.69 (0.54, 0.84)	0.72 (0.58, 0.86)
	Height category	203	ref	0.74 (0.60, 0.88)	NA
<b>Southern/Eastern Europe</b>	BMI category	382	ref	0.73 (0.67, 0.79)	0.70 (0.64, 0.77)
	Height category	382	ref	0.67 (0.54, 0.80)	NA
<b>Other/ Mixed</b>	BMI category	263	ref	0.74 (0.66, 0.81)	0.76 (0.68, 0.83)
	Height category	263	ref	0.61 (0.46, 0.76)	NA
<b>Swiss-SEP 2.0 quintiles****</b>					
<b>1: 0 - 49</b>	BMI category	138	ref	0.71 (0.60, 0.82)	0.74 (0.63, 0.85)
	Height category	138	ref	0.64 (0.40, 0.89)	NA
<b>2: 40 - 56</b>	BMI category	459	ref	0.73 (0.67, 0.79)	0.70 (0.64, 0.76)
	Height category	459	ref	0.54 (0.40, 0.67)	NA
<b>3: 57 - 62</b>	BMI category	427	ref	0.78 (0.71, 0.85)	0.73 (0.66, 0.81)
	Height category	427	ref	0.45 (0.29, 0.61)	NA
<b>4: 62 - 69</b>	BMI category	859	ref	0.75 (0.70, 0.80)	0.75 (0.69, 0.80)
	Height category	859	ref	0.64 (0.55, 0.73)	NA
<b>5: 70 - 100</b>	BMI category	1872	ref	0.72 (0.68, 0.76)	0.73 (0.68, 0.77)
	Height category	1872	ref	0.62 (0.56, 0.69)	NA
<b>Urbanization*****</b>					
<b>Rural</b>	BMI category	247	ref	0.76 (0.62, 0.90)	0.75 (0.62, 0.89)
	Height category	247	ref	0.57 (0.41, 0.73)	NA
<b>Small urban</b>	BMI category	1635	ref	0.75 (0.71, 0.79)	0.75 (0.72, 0.79)
	Height category	1635	ref	0.62 (0.55, 0.69)	NA
<b>Large urban</b>	BMI category	1873	ref	0.73 (0.69, 0.76)	0.71 (0.67, 0.74)
	Height category	1873	ref	0.59 (0.53, 0.66)	NA

\* BMI and height categories: We classified BMI and height into categories as shown in Table S6.

\*\* Cohen's Kappa to quantify agreement of BMI and height categories between WHO compared to local or IOTF growth references. We interpreted Cohen's Kappa between 0.61-0.80 as substantial (color: green) and 0.41-0.60 as moderate (color: red) agreement, according to Landis and Koch [11].

\*\*\* For the origin of parents, we included n = 3365 children.

\*\*\*\* Swiss-SEP: Swiss socioeconomic position version 2.0, census data from 2012 - 2015. The 5 groups are based on quintiles published by Panczak et al. [10]. A higher score relates to a higher socioeconomic position.

\*\*\*\*\* Urbanization: rural: rural areas; small urban: towns and suburbs; large urban: cities.

BMI: Body mass index; IOTF: International Obesity Task Force; NA: not applicable; ref: reference; WHO: World Health Organization.

## References

1. Braegger C, Jenni O, Konrad D, Molinari L. Neue Wachstumskurven für die Schweiz. *Paediatrica*. 2011 Jan; 22(1):9 - 11.
2. Eiholzer U, Fritz C, Katschnig C, Dinkelmann R, Stephan A. Contemporary height, weight and body mass index references for children aged 0 to adulthood in Switzerland compared to the Prader reference, WHO and neighbouring countries. *Ann Hum Biol*. 2019 Sep; 46(6):437-47. <https://doi.org/10.1080/03014460.2019.1677774>
3. Cole TJ, Lobstein T. Extended international (IOTF) body mass index cut-offs for thinness, overweight and obesity. *Pediatr Obesity*. 2012 Aug; 7(4):284-94. <https://doi.org/10.1111/j.2047-6310.2012.00064.x>
4. Vidmar SI, Cole TJ, Pan HQ. Standardizing anthropometric measures in children and adolescents with functions for egen: Update. *Stata Journal*. 2013 2013-07-01; 13(2):366-78. <https://doi.org/10.1177/1536867x1301300211>
5. Cole TJ, Green PJ. Smoothing reference centile curves: the LMS method and penalized likelihood. *Stat Med*. 1992 Jul; 11(10):1305-19. <https://doi.org/10.1002/sim.4780111005>
6. Computation of centiles and z-scores for height-for-age, weight-for-age and BMI-for age. World Health Organisation, Website accessed. Available from: <https://cdn.who.int/media/docs/default-source/child-growth/growth-reference-5-19-years/computation.pdf>.
7. Daymont C, Ross ME, Russell Localio A, Fiks AG, Wasserman RC, Grundmeier RW. Automated identification of implausible values in growth data from pediatric electronic health records. *J Am Med Inform Assoc*. 2017 Nov 1; 24(6):1080-7. <https://doi.org/10.1093/jamia/ocx037>
8. Mozun R, Ardura-Garcia C, Pedersen ESL, Usemann J, Singer F, Latzin P, et al. Age and body mass index affect fit of spirometry Global Lung Function Initiative references in schoolchildren. *ERJ Open Res*. 2022 Apr; 8(2). <https://doi.org/10.1183/23120541.00618-2021>
9. Physical status: the use of and interpretation of anthropometry. WHO Technical Report Series: 854. World Health Organization, 1995.
10. Panczak R, Berlin C, Voorpostel M, Zwahlen M, Egger M. The Swiss neighbourhood index of socioeconomic position: update and re-validation. *Swiss Med Wkly*. 2023 Jan 12; 153:40028. <https://doi.org/10.57187/smw.2023.40028>
11. Landis JR, Koch GG. The measurement of observer agreement for categorical data. *Biometrics*. 1977 Mar; 33(1).