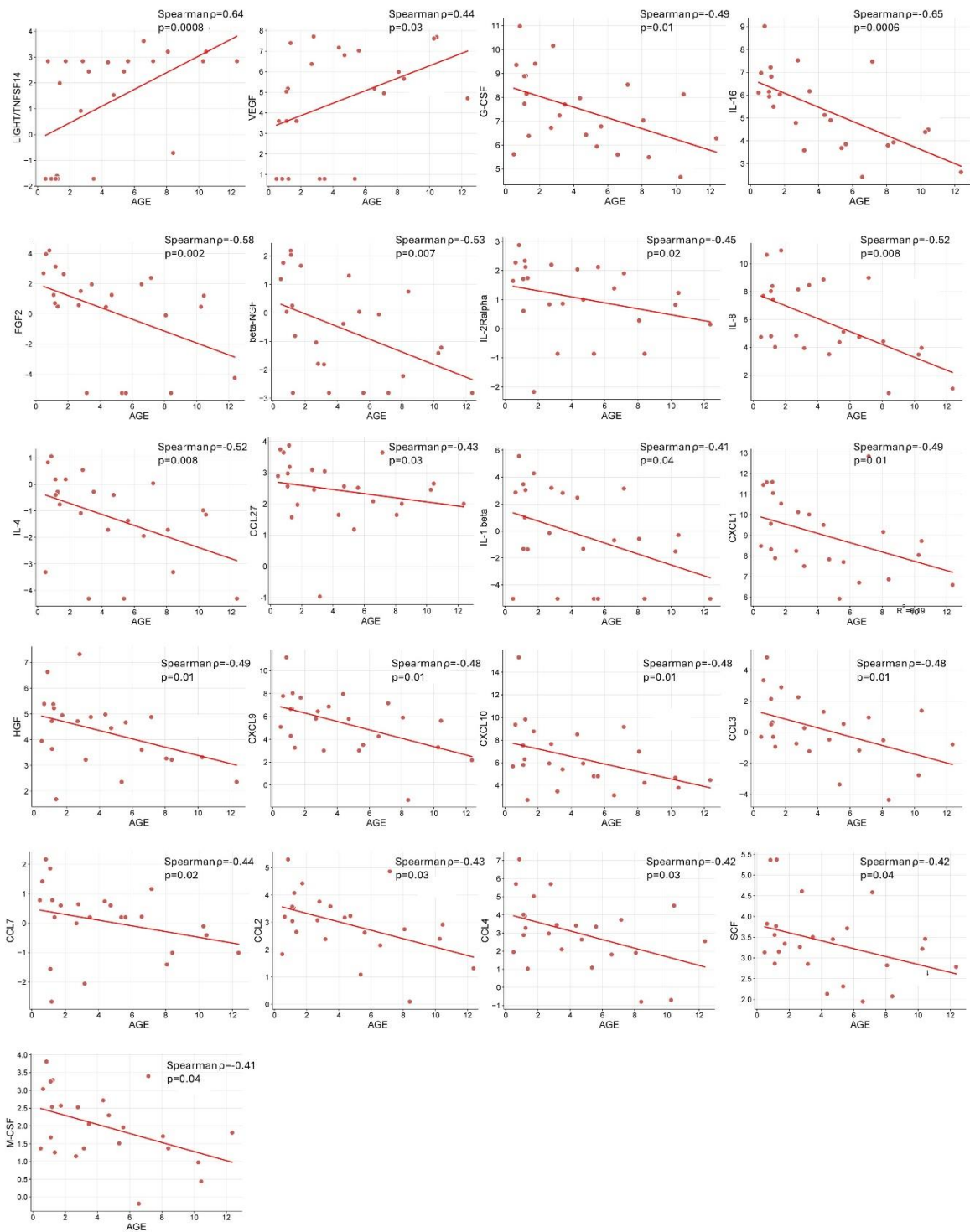
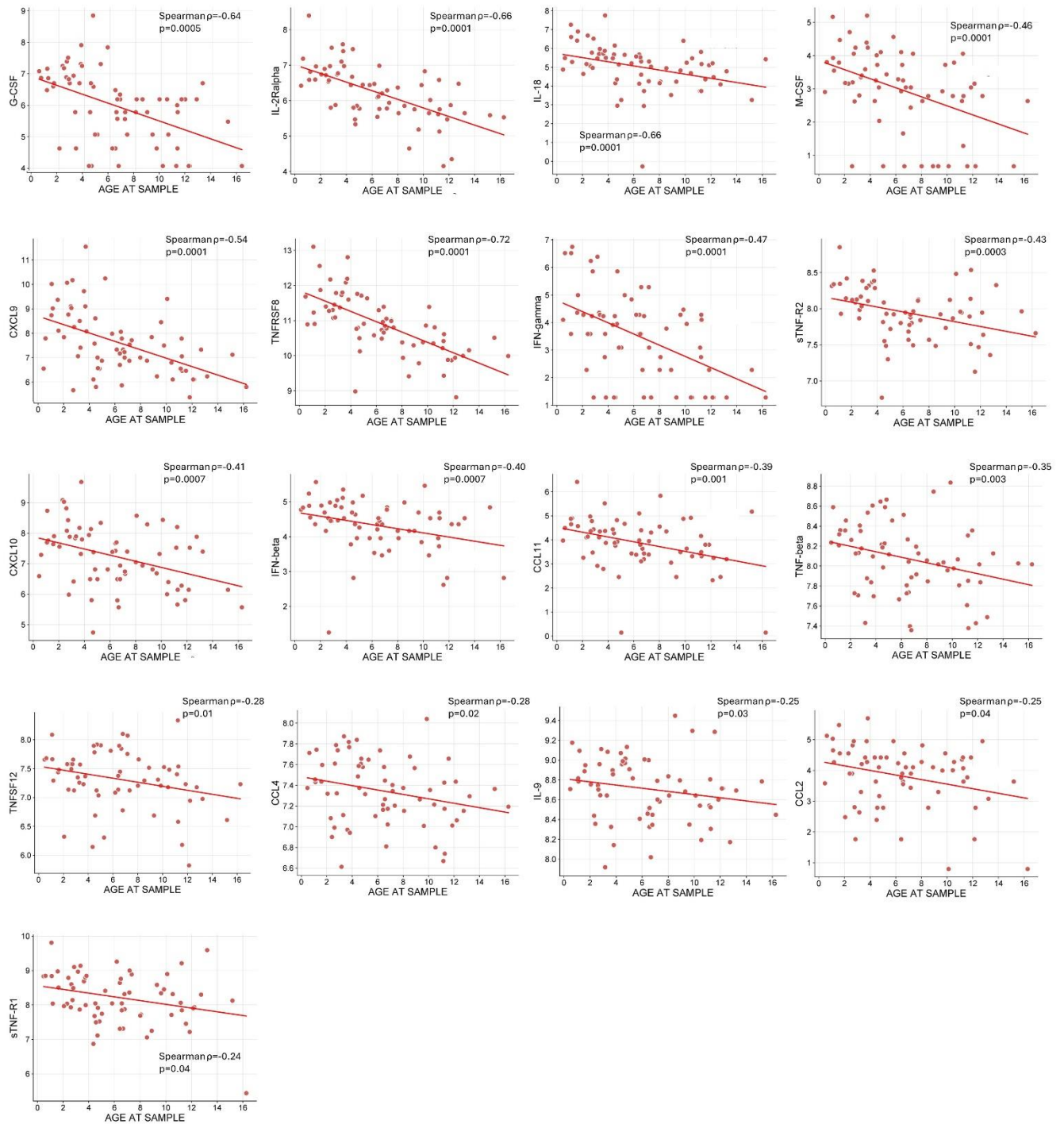


**Supplementary Table 1.** List of analytes measured across the two BioPlex kits. Shaded boxes indicate the analyte was detectable in that sample type. There were 13 analytes not detectable in either BAL or plasma (no shading).

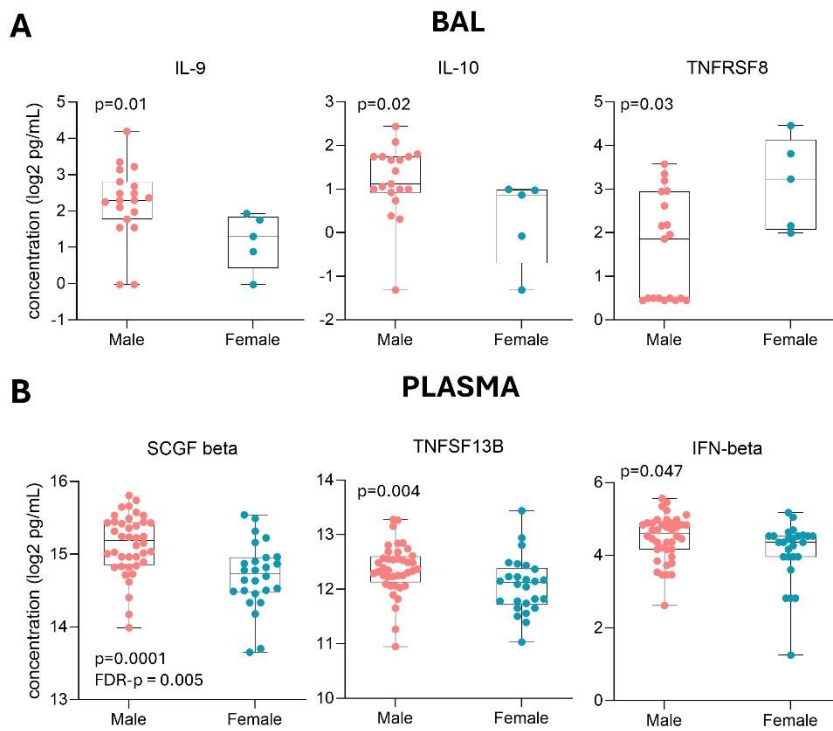
Analyte	BAL	PLASMA	Analyte	BAL	PLASMA	Analyte	BAL	PLASMA
BAFF/TNFSF13B			sIL-6Ra			LIF		
CTACK/CCL27			sTNF-R1			LIGHT/TNFSF14		
Eotaxin/CCL11			sTNF-R2			MCP-3/CCL7		
G-CSF			TNF-beta			MMP3		
gp130/sIL-6Rb			TWEAK/TNFSF12			PDGF-BB		
HGF			Chitinase 3-like 1			SCF		
IFN gamma			MIP-1alpha/CCL3			TNF-alpha		
IL-16			APRIL/TNFSF13			TRAIL/TNFSF10		
IL-18			Basic FGF/FGF2			TSLP		
IL-1ra			beta-NGF			VEGF		
IL-2Ralpha			GRO-alpha/CXCL1			IFN-b		
IL-32			IL-1 alpha			MMP2		
IL-9			IL-1 beta			RANTES/CCL5		
IP-10/CXCL10			IL-10			GM-CSF		
MCP-1 /CCL2			IL-12 (p40)			IFN-alpha 2		
M-CSF			IL-13			IL-11		
MIF			IL-15			IL-12(p70)		
MIG/CXCL9			IL-17			IL-19		
MIP-1beta/CCL4			IL-2			IL-20		
Osteocalcin			IL-3			IL-22		
Osteopontin (OPN)			IL-34			IL-26		
Pentraxin-3			IL-4			IL-27 (p28)		
sCD163			IL-5			IL-28A/IFN-lambda2		
sCD30/TNFRSF8			IL-6			IL-29/IFN-lambda1		
SCGF-beta			IL-7			IL-35		
SDF-1alpha/CXCL12			IL-8			MMP1		



**Supplementary Figure 1.** Spearman correlation plots for each significant analyte in BAL. The plots depict age in years on the x-axis, and the concentration (log<sub>2</sub> pg/mL) of each analyte on the y-axis. Spearman coefficient ( $\rho$ ) and raw p-values are shown, n=24.

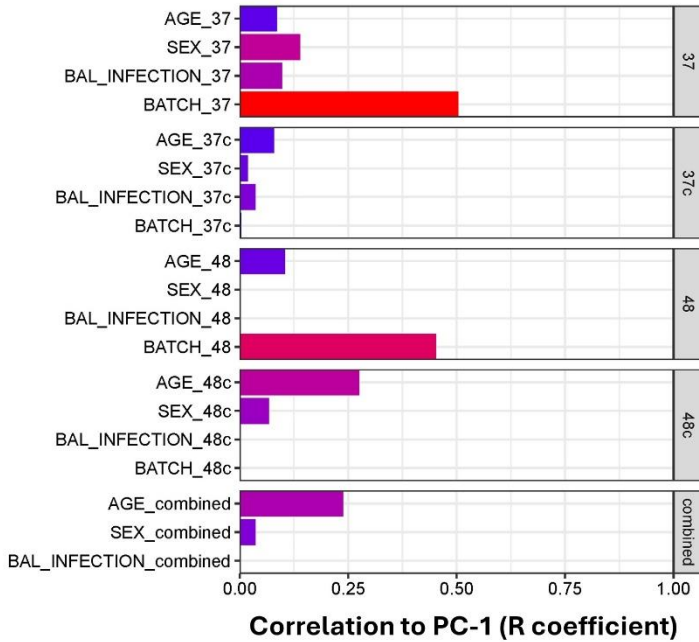


**Supplementary Figure 2.** Spearman correlation plots for each significant analyte in plasma. The plots depict age in years on the x-axis, and the concentration (log<sub>2</sub> pg/mL) of each analyte on the y-axis. Spearman coefficient (ρ) and raw p-values are shown, n=66.

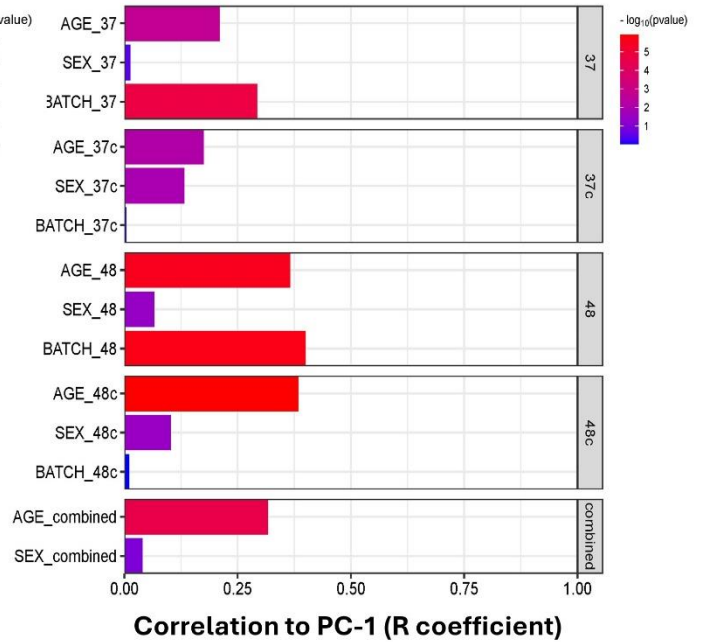


**Supplementary Figure 3.** Differences in analyte concentration between males and females in BAL and plasma. **(A)** BAL analytes that were significantly different between males and females. **(B)** Plasma analytes that were significantly different between males and females. P-values were determined by Mann Whitney U-test and  $p < 0.05$  was considered significant.

## A. BAL



## B. PLASMA



**Supplementary Figure 4.** Results of principal components analysis (PCA) on raw and ComBat batch-corrected analyte data. **(A)** PCA of BAL analyte data including age, sex, infection, and batch as variables. The first box includes uncorrected data for the 37-plex kit, the second box includes ComBat batch-corrected data for the 37-plex kit, the third box includes uncorrected data for the 48-plex kit, and the fourth box includes ComBat batch-corrected data for the 48-plex kit. The results show the removal of batch as a contributor to variation in the first dimension following ComBat correction for both kits. The fifth box shows ComBat corrected data from a combined file containing analytes of both the 37- and 48-plex kits, the results of which are presented in Figure 2 of the manuscript. **(B)** PCA of Plasma analyte data including age, sex, and batch as variables. The first box includes uncorrected data for the 37-plex kit, the second box includes ComBat batch-corrected data for the 37-plex kit, the third box includes uncorrected data for the 48-plex kit, and the fourth box includes ComBat batch-corrected data for the 48-plex kit. The results show the removal of batch as a contributor to variation in the first dimension following ComBat correction for both kits. The fifth box shows ComBat corrected data from a combined file containing analytes of both the 37- and 48-plex kits, the results of which are presented in Figure 2 of the manuscript.