

1 **Risk reduction in SARS-CoV-2 infection and reinfection conferred by humoral antibody**
2 **levels among essential workers during Omicron predominance**
3

4 James Hollister^{1*}, Cynthia Porter¹, Ryan Sprissler², Shawn C Beitel¹, James K. Romine¹, Jennifer
5 L. Uhrlaub⁴, Lauren Grant³, Young M. Yoo³, Ashley Fowlkes³, Amadea Britton⁵, Lauren E. W.
6 Olsho⁶, Gabriella Newes-Adeyi⁶, Sammantha Fuller⁶, Pearl Q. Zheng⁶, Manjusha Gaglani^{7,8},
7 Spencer Rose⁷, Kayan Dunnigan⁷, Allison L. Naleway⁹, Lisa Gwynn¹⁰, Alberto Caban-
8 Martinez¹⁰, Natasha Schaefer Solle¹⁰, Harmony L. Tyner¹¹, Andrew L. Philips¹², Kurt T
9 Hegmann¹², Sarang Yoon¹², Karen Lutrick¹³, Jefferey L. Burgess¹, Katherine D. Ellingson¹

10
11 Author affiliations

12 ¹ Mel and Enid Zuckerman College of Public Health, University of Arizona, Tucson, Arizona

13 ² University of Arizona Genetics Core – Center for Applied Genetics and Genomic Medicine,
14 University of Arizona, Tucson, Arizona

15 ³ Influenza Division, National Center for Immunization and Respiratory Diseases, Centers for
16 Disease Control and Prevention, Atlanta, Georgia⁴ Immunobiology, College of Medicine –
17 Tucson, University of Arizona, University of Arizona Health Sciences, Tucson, Arizona

18 ⁵ Coronavirus and Other Respiratory Viruses Division, National Center for Immunization and
19 Respiratory Diseases, Centers for Disease Control and Prevention, Atlanta, Georgia

20 ⁶ Abt Associates, Rockville, Maryland

21 ⁷ Baylor Scott & White Health, Temple, Texas

22 ⁸ Texas A&M University College of Medicine, Temple, Texas

23 ⁹ Kaiser Permanente Center for Health Research, Portland, Oregon

24 ¹⁰ Leonard M. Miller School of Medicine, University of Miami, Miami, Florida

25 ¹¹ St. Luke's Regional Health Care System, Duluth, Minnesota

26 ¹² Rocky Mountain Center for Occupational and Environmental Health, Department of Family
27 and Preventive Medicine, University of Utah Health, Salt Lake City, Utah

28 ¹³ Family and Community Medicine, College of Medicine – Tucson, University of Arizona
29 Health Sciences, Tucson, Arizona

30
31
32 * Corresponding author

33 E-mail: jameshollister@arizona.edu
34
35
36
37
38
39
40
41
42
43
44
45
46

47 **Abstract**

48 The extent to which semi-quantitative antibody levels confer protection against SARS-
49 CoV-2 infection in populations with heterogenous immune histories is unclear. Two nested case-
50 control studies were designed within the multisite HEROES/RECOVER prospective cohort of
51 frontline workers to study the relationship between antibody levels and protection against first-
52 time post-vaccination infection and reinfection with SARS-CoV-2 from December 2021 to
53 January 2023. All participants submitted weekly nasal swabs for rRT-PCR testing and blood
54 samples quarterly and following infection or vaccination. Cases of first-time post-vaccination
55 infection following a third dose of monovalent (origin strain WA-1) mRNA vaccine (n=613) and
56 reinfection (n=350) were 1:1 matched to controls based on timing of blood draw and other
57 potential confounders. Conditional logistic regression models were fit to estimate infection risk
58 reductions associated with 3-fold increases in end titers for receptor binding domain (RBD). In
59 first-time post-vaccination and reinfection study samples, most were female (67%, 57%), non-
60 Hispanic (82%, 68%), and without chronic conditions (65%, 65%). The odds of first-time post-
61 vaccination infection were reduced by 21% (aOR=0.79, 95% CI=[0.66-0.96]) for each 3-fold
62 increase in RBD end titers. The odds of reinfection associated with a 3-fold increase in RBD end
63 titers were reduced by 23% (aOR=0.77, 95% CI=[0.65-0.92]) for unvaccinated individuals and
64 58% (aOR=0.42, 95% CI=0.22-0.84) for individuals with three mRNA vaccine doses following
65 their first infection. Frontline workers with higher antibody levels following a third dose of
66 mRNA COVID-19 vaccine were at reduced risk of SARS-CoV-2 during Omicron predominance.
67 Among those with previous infections, the point estimates of risk reduction associated with
68 antibody levels was greater for those with three vaccine doses compared to those who were
69 unvaccinated.

70 **Introduction**

71 The Coronavirus Disease 2019 (COVID-19) pandemic has transitioned from a phase
72 defined by acute morbidity and mortality in immunologically naïve populations to one defined
73 by post-vaccination infections and reinfections in populations with various combinations of
74 infection- and vaccine-induced immunity. Emergence of highly transmissible Omicron
75 subvariants of severe acute respiratory syndrome coronavirus 2 (SARS-CoV-2) accelerated
76 transmission despite high levels of population immunity to the prior strains and subvariants [1].
77 The first vaccine trials established that higher post-vaccine antibody levels were correlated with
78 increased protection against SARS-CoV-2 infection [2]. Other cohort studies have demonstrated
79 variable response to the vaccines based on individual history of infection [3-5]. It is critical to
80 understand the relationship between antibody levels and protection against Omicron post-
81 vaccination infections and reinfections in populations with heterogenous infection and
82 vaccination histories [6].

83 Conceptually, establishing and validating specific antibody levels that correlate with
84 protection against SARS-CoV-2 infection could result in biomarkers that are reliably predictive
85 of vaccine effectiveness [7]. For influenza, hemagglutination inhibition (HI) assay titers have
86 proven useful in comparing different vaccines, with HI end titers of 1:40 generally accepted to be
87 associated with a 50% reduction in risk of influenza [8, 9]. However, establishing SARS-CoV-2
88 antibody correlates of protection is complicated by the rapid emergence of variants and
89 subvariants, differences in assays used to quantify antibody levels, and differential waning of
90 antibody levels over time relative to immune conferring events [3, 10]. Nonetheless, calls for
91 SARS-CoV-2 correlates of protection persist as questions remain regarding the durability of

92 immunity over time given the evolution of subvariants capable of evading acquired immune
93 responses [11, 12].

94 Uncertainties also remain in determining optimal timing for future COVID-19 vaccine
95 doses [13]. This report examined the relationship between humoral antibody levels and the risks
96 of 1) first-time post-vaccination infection following a third dose of an origin strain WA-1
97 monovalent mRNA vaccine; and 2) reinfection among individuals with one previous infection
98 stratified by vaccination status at the time of reinfection (i.e., unvaccinated or had received two
99 to three doses of mRNA vaccine) during early Omicron predominance.

100 **Materials and methods**

101 **Study design**

102 Two nested case-control studies were designed within a prospective cohort of frontline
103 workers from eight locations in the United States (US) to study the relationship between
104 antibody levels and SARS-CoV-2 infections during early Omicron predominance (defined here
105 as December 2021 through September 2022). The first study defined cases as those with a first-
106 time SARS-CoV-2 post-vaccination infection following a third dose of COVID-19 origin strain
107 WA-1 monovalent mRNA vaccine. The second defined cases as those infected with SARS-CoV-
108 2 after one previous infection; at the time of reinfection, cases were either unvaccinated or had
109 received two to three doses of COVID-19 origin strain WA-1 monovalent mRNA vaccine.

110 **Participants**

111 Beginning on July 27, 2020, frontline workers were followed in prospective cohorts
112 through the Arizona Healthcare, Emergency Response, and Other Essential workers Study
113 (HEROES) and the Research on the Epidemiology of SARS-CoV-2 in Essential Response

114 Personnel (RECOVER) sites in Arizona, Florida, Minnesota, Oregon, Texas, and Utah [14, 15].
115 Briefly, eligible participants included adults who worked at least 20 hours per week in
116 occupations that required frequent direct contact with non-household members (i.e., healthcare
117 workers, first responders, and other essential workers). Recruitment ended on April 15, 2023.
118 Upon enrollment, participants completed a survey to collect baseline information about
119 characteristics related to sociodemographic, occupation, health status, health-related behaviors,
120 and prior SARS-CoV-2 infection. COVID-19 vaccination information was self-reported through
121 surveys and validated through state vaccine registries or medical records. Additional surveys
122 were completed upon infection, and self-reported information on mask use and exposures was
123 collected monthly.

124 Each week and at onset of symptoms, participants provided a mid-turbinate nasal
125 specimen that was tested at the Marshfield Clinic Laboratory (Marshfield, WI) via real time
126 reverse transcription-polymerase chain reaction (rRT-PCR) for the presence of SARS-CoV-2.
127 Additionally, participants were asked to submit blood samples at three frequencies: (1) upon
128 enrollment, (2) quarterly, and (3) 28 days after any immunity-conferring event (SARS CoV-2
129 infection or COVID-19 vaccination). All study protocols were reviewed and approved by each
130 site's Institutional Review Boards. Study participants provided informed written consent for all
131 study activities.

132 **Study inclusion criteria and case definition**

133 For the first analytic study sample, cases of first-time post-vaccination infections were
134 defined as individuals with an incident SARS-CoV-2 infection occurring at least 14 days after a
135 third dose origin strain WA-1 monovalent Pfizer-BioNTech COVID-19 mRNA vaccine,
136 Moderna COVID-19 mRNA-1273 or a combination of the two vaccines among individuals with

137 no history of previous infection. Infection history prior to enrollment was ascertained via self-
138 report upon study enrollment and confirmed with a qualitative result from the baseline blood
139 draw, if available, among only those unvaccinated at the time of enrollment by examining S2 and
140 RBD (S3 and S4 Figs). If a participant was vaccinated at the time of their baseline blood draw,
141 then we solely relied on self-reported data for pre-study infection history. Although nucleocapsid
142 (N) titers were available for all participants with a baseline blood collection, they were unable to
143 be used to detect prior SARS-CoV-2 infections due to low specificity and sensitivity. Variant of
144 infection was confirmed by whole-genome sequencing for eligible specimens, or estimated by
145 using the state-specific predominant variant at the time of infection according to Centers for
146 Disease Control and Prevention data [16]. To be included in this study, participants had to have
147 submitted a nasal specimen at least 80% of weeks and collected blood draws per the study
148 protocol during the study period with no evidence of SARS-CoV-2 infection at the time of the
149 blood draw following their third dose of vaccine. Cases were defined as participants who tested
150 positive for SARS-CoV-2 after the blood draw and prior to any additional vaccine dose (Fig 1).
151 Third vaccine doses occurred from June 2021 to April 2022, blood draws occurred from June
152 2021 to August 2022, and Omicron infections occurred from December 2021 and September
153 2022.

154
155 **Fig 1. Flowcharts showing inclusion and exclusion criteria for nested case-control studies**
156 **within the HEROES/RECOVER cohort of frontline workers: 613 cases of first-time post-**
157 **vaccination infection following a third dose of COVID-19 origin strain WA-1 monovalent**
158 **mRNA vaccine were matched 1:1 to controls based on site and time between vaccination**
159 **and blood draw.**

160

161 Within the second analytic study sample, reinfection cases were defined as one of three

162 groups (1) participants who had a previous infection but were unvaccinated, (2); participants

163 with a previous infection followed by completion of two doses of a monovalent COVID-19

164 mRNA vaccine (primary series only); or (3) participants with a previous infection followed by

165 three doses of a monovalent COVID-19 mRNA vaccine (primary series and a third monovalent

166 dose). Reinfections were defined as Omicron infections occurring at least 90 days after a

167 previous Omicron SARS-CoV-2 infection or at least 45 days after a previous infection of a

168 distinct variant (e.g., WA-1 vs. Delta vs. Omicron). Variant of first infection and reinfection was

169 confirmed by either whole-genome sequencing for eligible specimens, or estimated by using the

170 state-specific predominant variant at the time of infection according to Centers for Disease

171 Control and Prevention data [16]. Those receiving a Janssen Ad26.COVID-19 vaccine

172 and those with only one mRNA vaccination were ineligible, thus included cases had none, two,

173 or three immunizations. Participants were eligible for the reinfection study sample set if they: (1)

174 had either reported testing positive for SARS-CoV-2 prior to enrollment or tested positive by

175 rRT-PCR during the study period prior to COVID-19 vaccination, and (2) had a blood draw at

176 any time after their last immune conferring event (first infection for unvaccinated participants or

177 last vaccine dose for vaccinated participants). For this group, a case was defined as a participant

178 with a confirmed reinfection after the blood draw (Fig 2). Initial infections occurred from March

179 2020 to August 2022, blood draws occurred from August 2020 to November 2022, and

180 reinfections occurred from December 2021 to January 2023.

181

182 **Fig 2. Flowcharts showing inclusion and exclusion criteria for nested case-control studies**
183 **within the HEROES/RECOVER cohort of frontline workers: 350 cases of reinfection were**
184 **matched 1:1 to controls based on site, vaccination status, variant of first infection, and time**
185 **between immune conferring event (either vaccine or infection) and blood draw.**

186

187 **Matching**

188 The final analytic samples were created by matching eligible cases to controls in a 1:1
189 ratio. Matched controls for the first-time post-vaccination cases included individuals with no
190 history of infection who were matched by study site and days between the third origin strain
191 WA-1 monovalent COVID-19 mRNA vaccine and blood draw. Matched controls for reinfection
192 cases included individuals with a history of one infection who were matched to cases by: study
193 site, variant of first infection (origin strain WA-1, Delta, or Omicron), vaccination status at the
194 time of blood draw, and days between last immune conferring event (first infection for
195 unvaccinated participants or last A vaccine dose for vaccinated participants) and blood draw. For
196 both groups, time windows were used to match days between immune conferring events and
197 blood draws rather than exact matches. For blood samples that were collected less than 150 days
198 since the last immune conferring events, time difference windows of 3, 7, 14, and 21 days were
199 each attempted to find the highest match quality. For blood samples collected at least 150 days
200 since the last immune conferring events, no strict time differences were used.

201 **Semi-quantitative serological measures**

202 All sera from all sites were sent to the University of Arizona Genetics Core laboratory for
203 testing using a locally-developed and validated semi-quantitative enzyme-linked immunosorbent
204 assay (ELISA) to measure antibody binding to the receptor binding domain (RBD) and S2

205 subunit domain (S2) of the SARS-CoV-2 Washington-1 spike protein, as previously described
206 [17]. Five 3-fold dilutions of immune sera were made starting at a 1:60 dilution and ending at
207 1:4860. End titer values represent the first dilution in which an immune response was no longer
208 detected. Those with immune response still detected at the final dilution were imputed to 1:9720.
209 Additionally, RBD and S2 antibody levels were measured as the area under the serial dilution
210 curve (AUC). This continuous measurement represents a weighted sum of the optical density
211 value at each dilution. Both end titer and AUC measurements of RBD and S2 were included in
212 the present analysis.

213 **Statistical analysis**

214 Analyses were conducted using SAS Studio v9.4, GraphPad Prism v9.5.1, and R v4.2.0.
215 Demographic information and measured antibody response for cases and controls was compared
216 using paired t tests and univariate conditional logistic regression for continuous and categorical
217 variables. The outcomes of first-time post-vaccination infection and reinfection with Omicron
218 were modeled using conditional logistic regression to assess the unadjusted and adjusted effects
219 of RBD and S2 humoral antibody levels. Adjusted odds ratios were calculated with models
220 including the following variables that were selected a priori as putative confounders: gender, age
221 (18-49 or over 50 years), presence of at least one chronic condition (i.e. asthma, chronic lung
222 disease, cancer, diabetes, heart disease, hypertension, immunosuppression, kidney disease, liver
223 disease, neurologic or neuromuscular disease or disorder, and autoimmune disease), high
224 exposure to individuals infected with SARS-CoV-2 (above the cohort mean number of weekly
225 hours), high reported mask use in the community (above the cohort mean percentage), and high
226 reported personal protective equipment (PPE) adherence at work (above the cohort mean
227 percentage), where reported PPE adherence at work was defined as the percentage of time in

228 which an individual uses the PPE recommended by their employer when in direct contact with
229 people. For the reinfection study sample, separate models were fit for each category of
230 vaccination status: unvaccinated, 2 doses, and 3 doses of the origin strain WA-1 monovalent
231 COVID-19 mRNA vaccine. In addition, we conducted a likelihood ratio test to assess the
232 interaction term between vaccination status and antibody titer within the reinfection sample.
233 AUC antibody values were standardized by z-scores prior to modeling for ease of
234 interpretation. For end titer data, a log base 3 transformation was used due to the three-fold
235 dilution assay and was treated as a continuous value. Curves displaying the estimated percent
236 reduction in risk were estimated for both first-time post-vaccination infection and reinfection
237 models using an end titer level of 1:60 as the reference. The estimated percent reduction in risk
238 was calculated at each titer level. The 95% confidence interval bounds on the curves were
239 estimated when percent reduction in risk at each titer level was statistically significant at the 0.05
240 alpha level [2, 18]. Using risk reduction curves, we estimated the titer level for a 50% reduction
241 in risk and reported the titer levels used in the ELISA in which the estimate fell between, as is
242 standard in a typical correlates of protection analysis [8, 18, 19].

243 **Results**

244 **First-time post-vaccination infection with Omicron following third** 245 **dose of COVID-19 origin strain WA-1 monovalent mRNA vaccine**

246 The incidence of first-time vaccine post-vaccination infections with the Omicron variant
247 following a third dose of origin strain WA-1 monovalent COVID-19 mRNA vaccine was 1.68
248 per 1000 person-days (830 infections) in the HEROES/RECOVER cohort. In the sample set of
249 613 first-time post-vaccination cases and 613 matched controls, most participants were female

250 (67%), white and non-Hispanic (82%), healthcare workers (64%), and had no chronic conditions
 251 (65%) (Table 1). There was a small but statistically significant difference in days between third
 252 vaccination and blood draw (41.4 days for cases and 42.4 days for controls, $p=0.003$). Compared
 253 to cases, controls were slightly older (46y vs. 43y, $p<0.001$), and had modestly higher reported
 254 mask use in the community (61.1% vs. 57.2%) and higher reported PPE adherence at work
 255 (81.6% v. 77.0%) (Table 1).

256
 257 **Table 1. Demographic and health characteristics for nested case-control samples within the**
 258 **HEROES/RECOVER prospective cohort of frontline workers: the first-time post-**
 259 **vaccination sample was matched by site and days between booster vaccine and blood draw,**
 260 **and the reinfection sample was matched on site, vaccination status, variant of first**
 261 **infection, and days between most recent immune conferring event and blood draw.**

262

	Sample					
	First-time post-vaccination infection			Reinfection		
	Cases (n=613)	Controls (n=613)	p-value ^a	Cases (n=350)	Controls (n=350)	p-value ^a
Site, n (%)			1.00			1.00
Tucson, AZ	145 (23.7)	145 (23.7)		123 (35.1)	123 (35.1)	
Phoenix, AZ	73 (11.9)	73 (11.9)		46 (13.1)	46 (13.1)	
Other, AZ	37 (6.0)	37 (6.0)		28 (8.0)	28 (8.0)	
Florida	22 (3.6)	22 (3.6)		50 (14.3)	50 (14.3)	
Minnesota	132 (21.5)	132 (21.5)		30 (8.6)	30 (8.6)	
Oregon	37 (6.0)	37 (6.0)		5 (1.4)	5 (1.4)	
Texas	33 (5.4)	33 (5.4)		22 (6.3)	22 (6.3)	
Utah	134 (21.9)	134 (21.9)		46 (13.1)	46 (13.1)	
Vaccination status^b			1.00			1.00
Unvaccinated	0 (0.0)	0 (0.0)		157 (44.9)	157 (44.9)	
2 Doses	0 (0.0)	0 (0.0)		95 (27.1)	95 (27.1)	

3 Doses	613 (100.0)	613 (100.0)		98 (28.0)	98 (28.0)	
Variant of first infection			NA			1.00
Origin strain WA-1	NA	NA		267 (76.3)	267 (76.3)	
Delta	NA	NA		48 (13.7)	48 (13.7)	
Omicron	613 (100)	NA		35 (10.0)	35 (10.0)	
Days from ICE to blood draw, mean (SD)^c	41.4 (39.8)	42.4 (40.6)	0.0003	113.2 (108.9)	129.3 (136.3)	<0.001
Age (y), mean (SD)	43.0 (10.0)	46.4 (11.9)	<0.001	45.6 (11.1)	44.3 (11.6)	0.10
Gender, n (%)			0.60			0.16
Female	415 (67.7)	406 (66.2)		189 (54.0)	208 (59.4)	
Male	197 (32.1)	205 (33.4)		159 (45.4)	142 (40.6)	
Other	1 (0.2)	2 (0.3)		0 (0.0)	0 (0.0)	
Missing	0 (0.0)	0 (0.0)		2 (0.6)	0 (0.0)	
Race/ethnicity, n (%)			0.24			0.41
Non-Hispanic, White	489 (79.8)	512 (83.5)		232 (66.3)	245 (70.0)	
Hispanic	72 (11.7)	52 (8.5)		89 (25.4)	72 (20.6)	
Non-Hispanic, Black	18 (2.9)	19 (3.1)		11 (3.1)	10 (2.9)	
Non-Hispanic, Asian	18 (2.9)	23 (3.8)		3 (0.9)	7 (2.0)	
Other	8 (1.3)	5 (0.8)		4 (1.1)	5 (1.4)	
Missing	8 (1.3)	2 (0.3)		11 (3.1)	11 (3.1)	
Occupation, n (%)^d			0.06			0.06
Healthcare Worker	376 (61.3)	411 (67.0)		125 (35.7)	145 (41.4)	
First Responder	79 (12.9)	60 (9.8)		117 (33.4)	92 (26.3)	
Other Essential Worker	158 (25.8)	142 (23.2)		108 (30.9)	113 (32.3)	
Chronic conditions, n (%)^e			0.91			0.24
None	403 (65.7)	397 (64.8)		237 (67.7)	216 (61.7)	
One	114 (18.6)	113 (18.4)		73 (20.9)	74 (21.1)	
Two Or More	93 (15.2)	98 (16.0)		33 (9.4)	44 (12.6)	
Missing	3 (0.5)	5 (0.8)		7 (2.0)	16 (4.6)	
Immunosuppressive medication, n (%)^f			0.70			0.82
Yes	14 (2.3)	12 (2.0)		11 (3.1)	10 (2.9)	
No	590 (96.2)	592 (96.6)		330 (94.3)	320 (91.4)	
Missing	9 (1.5)	9 (1.5)		9 (2.6)	20 (5.7)	
Days from ICE to infection, mean (SD)^g	183.0 (80.6)	NA	NA	341.0 (180.6)	NA	NA
Avg weekly hrs. exposed to COVID, mean (SD)^g	4.8 (9.9)	5.0 (10.4)	0.74	7.0 (12.0)	6.2 (10.5)	0.51
Avg % adherence to PPE rules at work, mean (SD)^h	77.0 (26.4)	81.6 (24.3)	0.001	58.2 (31.7)	62.3 (32.1)	0.09
Avg % time masked in public, mean (SD)	57.2 (29.1)	61.1 (29.7)	0.01	41.7 (28.7)	47.3 (32.6)	0.02

263

264 ^aFrom paired t-test and conditional logistic regression for continuous and categorical variables, respectively.

265 ^bAll vaccine doses are monovalent origin strain WA-1 mRNA vaccines.

266 ^cICE (immune conferring event) is the third vaccine dose for the first-time post-vaccination infection with Omicron
267 case-control cohort and the 3 dose strata within the reinfection case-control cohort, the second vaccine dose for the 2
268 dose strata within the reinfection case-control cohort, and the initial SARS-CoV-2 infection for the unvaccinated
269 strata within the reinfection case-control cohort.

270 ^dOther essential workers include occupation sectors with potentially high exposures to SARS-CoV-2 such as
271 education, agriculture, public transportation services, waste collection, delivery, utilities, community-based services,
272 childcare, and others

273 ^eChronic conditions include asthma, chronic lung disease, cancer, diabetes, heart disease, hypertension,
274 immunosuppression, kidney disease, liver disease, neurologic or neuromuscular disease or disorder, and
275 autoimmune disease.

276 ^fParticipants are asked “Are you currently taking prednisone or other ongoing steroid medications (excluding
277 inhaled steroids and one-time injections) or any other medications that may suppress your body's ability to fight
278 infection?”.

279 ^gExposure to individuals infected with SARS-CoV-2.

280 ^hReported personal protective equipment (PPE) adherence at work was defined as the percentage of time in which an
281 individual uses the PPE recommended by their employer when in direct contact with people

282

283 For cases, the mean number of days between the third vaccine dose and infection was 183
284 days. Compared to cases, a higher percentage of controls had the maximum end titer values
285 (1:9720) for RBD (65.1% vs. 56.9%,) and S2 (41.1% vs. 32.0%), but the distribution between
286 cases and controls for RBD end titer values was not statistically significant. Controls had
287 significantly higher mean RBD (0.0124 vs. 0.0118) and S2 (0.0102 vs. 0.0097) AUC values
288 compared to cases (Table 2, S1 Fig).

289

290
 291
 292 **Table 2. Quantitative antibody results, including end titers and area under the curve**
 293 **(AUC) calculations for SARS-CoV-2 receptor-binding domain (RBD) and (S2) spike**
 294 **protein subunits in nested case-control samples from the HEROES/RECOVER prospective**
 295 **cohort of frontline workers.**
 296

Variable	Sample					
	First-time post-vaccination			Reinfection		
	Cases (n=613)	Controls (n=613)	p-value ^a	Cases (n=350)	Controls (n=350)	p-value ^a
RBD End Titer, n (%)			0.08			0.003
1:60	4 (0.7)	3 (0.5)		36 (10.3)	19 (5.4)	
1:180	5 (0.8)	3 (0.5)		31 (8.9)	25 (7.1)	
1:540	14 (2.3)	13 (2.1)		43 (12.3)	38 (10.9)	
1:1620	45 (7.3)	39 (6.4)		55 (15.7)	51 (14.6)	
1:4860	196 (32.0)	156 (25.4)		66 (18.9)	77 (22.0)	
1:9720 ^b	349 (56.9)	399 (65.1)		119 (34.0)	140 (40.0)	
RBD AUC, mean (SD)	0.0118 (0.003)	0.0124 (0.003)	<0.0001	0.0088 (0.005)	0.0098 (0.005)	0.0002
S2 End Titer, n (%)			0.002			0.003
1:60	7 (1.1)	2 (0.3)		9 (2.6)	2 (0.6)	
1:180	8 (1.3)	6 (1.0)		3 (0.9)	4 (1.1)	
1:540	24 (3.9)	21 (3.4)		26 (7.4)	25 (7.1)	
1:1620	120 (19.6)	90 (14.7)		95 (27.1)	64 (18.3)	
1:4860	258 (42.1)	242 (39.5)		95 (27.1)	124 (35.4)	
1:9720 ^b	196 (32.0)	252 (41.1)		122 (34.9)	131 (37.4)	
S2 AUC, mean (SD)	0.0097 (0.003)	0.0102 (0.003)	0.0003	0.0102 (0.004)	0.0110 (0.003)	0.0005

298 ^aFrom paired t-test and conditional logistic regression for continuous and categorical variables, respectively.

299 ^bSamples where antibody response was still detected at the final dilution were imputed to 1:9720.

300

301 Unadjusted and adjusted conditional logistic regression models for first-time vaccine-
302 post-vaccination infection with Omicron infection following a third dose of an origin strain WA-
303 1 monovalent COVID-19 mRNA vaccine showed statistically significant protective effects for
304 RBD and S2 end titers. Each three-fold increase in RBD end titer reduced the odds of first-time
305 post-vaccination infection with Omicron by 21% (aOR: 0.79, 95% CI: [0.66, 0.96]). Each three-
306 fold increase in S2 end titer reduced the odds of post-vaccination infection by 25% (aOR: 0.75,
307 95% CI: [0.63, 0.91]) (Table 3). Compared to the reference end titer (no antibodies detected at
308 the 1:60 dilution), estimated risk reduction was 50% at RBD and S2 end titers between 1:540 and
309 1:1620 (Fig 2). Models including AUC data as our antibody measurement had similar results.
310 Full results including estimates for all variables included in the models can be found in the
311 supplemental material (S3 and S4 Tables).

312

313 **Table 3. Unadjusted and adjusted odds ratios (ORs) generated by conditional logistic**
314 **regression models for a nested sample of individuals with first-time post-vaccination**
315 **infection following third COVID-19 origin strain WA-1 monovalent mRNA vaccine dose**
316 **and matched controls (n=1226) and for a nested sample of individuals with reinfection and**
317 **matched controls, stratified by vaccination status (n=700) from the HEROES/RECOVER**
318 **prospective cohort of frontline workers.**

319

Study Sample	N	Outcome	Predictor	RBD		S2	
				Unadjusted OR (95% CI)	Adjusted OR (95% CI)	Unadjusted OR (95% CI)	Adjusted OR (95% CI)

Never Infected, 3 doses origin strain WA-1 monovalent mRNA vaccine ^a	1226	Post-Vaccination Omicron Infection	End Titer	0.82 (0.68, 0.98)*	0.79 (0.66, 0.96)*	0.74 (0.63, 0.87)*	0.75 (0.63, 0.88)*
			AUC	0.78 (0.69, 0.88)*	0.77 (0.67, 0.88)*	0.80 (0.70, 0.90)*	0.79 (0.69, 0.90)*
Prior Infection, Unvaccinated ^b	314	Reinfection	End Titer	0.77 (0.66, 0.91)*	0.77 (0.65, 0.92)*	0.80 (0.63, 1.01)	0.82 (0.64, 1.04)
			AUC	0.63 (0.46, 0.88)*	0.64 (0.44, 0.93)*	0.75 (0.59, 0.96)*	0.72 (0.54, 0.94)*
Prior Infection + 2 doses origin strain WA-1 monovalent mRNA vaccine ^c	190	Reinfection	End Titer	0.75 (0.47, 1.21)	0.73 (0.44, 1.21)	0.89 (0.59, 1.35)	0.84 (0.54, 1.30)
			AUC	0.86 (0.56, 1.32)	0.91 (0.55, 1.50)	0.83 (0.58, 1.19)	0.91 (0.61, 1.34)
Prior Infection + 3 doses origin strain WA-1 monovalent mRNA vaccine ^d	196	Reinfection	End Titer	0.39 (0.20, 0.77)*	0.42 (0.22, 0.84)*	0.41 (0.22, 0.79)*	0.41 (0.21, 0.80)*
			AUC	0.45 (0.25, 0.81)*	0.51 (0.28, 0.94)*	0.51 (0.32, 0.83)*	0.56 (0.34, 0.92)*

320

321 Abbreviations: OR: odds ratio; CI: confidence interval

322 Adjusted models include age, gender, presence of at least 1 chronic condition, weekly exposure to individuals infected with SARS-CoV-2,
323 personal protective equipment (PPE) usage at work and in the community.

324 Odds ratio represents odds of being a case for each 3-fold increase in end titer.

325 ^aCases were defined as individuals who became infected with Omicron after receiving three origin strain WA-1 monovalent COVID-19 vaccine
326 doses and no prior infections. Cases and controls were matched on number of days between blood draw and third vaccine dose, and study site.

327 ^bCases were defined as individuals who became reinfected with SARS-CoV-2 while unvaccinated. Both cases and controls were unvaccinated at
328 the time of their blood draw.

329 ^cCases were defined as individuals who became reinfected with SARS-CoV-2. Both cases and controls were unvaccinated at time of initial
330 infection, then received 2 doses of an origin strain WA-1 monovalent COVID-19 vaccine prior to any potential reinfection. Blood draw for both
331 cases and controls occurred after the 2nd dose.

332 ^dCases were defined as individuals who became reinfected with SARS-CoV-2. Both cases and controls were unvaccinated at time of initial
333 infection, then received 3 doses of an origin strain WA-1 monovalent COVID-19 vaccine prior to any potential reinfection. Blood draw for both
334 cases and controls occurred after the 3rd dose.

335 *Statistically significant at alpha = 0.05

336

337 **Fig 3. Adjusted relative risk reduction for first-time post-vaccination infection with**
338 **Omicron following a third dose of an origin strain WA-1 monovalent mRNA COVID-19**
339 **vaccine among frontline workers in the HEROES/RECOVER cohort with 95% confidence**
340 **intervals using an end titer level of 1:60 as the reference.**

341 Samples where antibody response was still detected at the final dilution were imputed to 1:9720.

342 The estimated percent reduction was 50% near the 1:1620 dilution for RBD and between the

343 1:540 and 1:1620 dilution for S2.

344

345 **Reinfection**

346 The sample set of 350 cases of reinfection and 350 matched controls included 157 pairs

347 who were unvaccinated, 95 pairs who had completed the primary series of two doses of COVID-

348 19 origin strain WA-1 monovalent mRNA vaccine, and 98 pairs who had received 3 doses. In the

349 general HEROES/RECOVER cohort, the incidence of reinfections with the Omicron variant for

350 individuals who were unvaccinated, had 2 doses, and had 3 doses was 0.98, 0.71, and 0.71 per

351 1000 person-days, respectively. Overall, most participants were female (57%), white and non-

352 Hispanic (68%), and had no chronic conditions (65%). Most cases and controls were first

353 infected with the origin strain WA-1 strain of SARS-CoV-2 (76%) (Table 1). Although cases and

354 controls were matched on the interval between the most recent immune conferring event (first

355 infection or vaccination) and the date of their blood draw, there was a nominal but statistically

356 significant difference (113 days for cases and 129 days for controls, $p < 0.001$) (Table 1) due to

357 being matched on intervals as described previously in the methods. Compared to cases, controls

358 had a higher percentage of individuals at the highest imputed end titer level (1:9720) (RBD:

359 40.0% vs. 34.0%; S2: 37.4% vs. 34.9%) and had higher mean AUC values for RBD (0.0098 vs.

360 0.0088) and S2 (0.0110 vs. 0.0102) (Table 2 and S2 Fig). Demographic information stratified by

361 vaccination status can be found in the supplemental material (S1 and S2 Tables).

362 In unadjusted and adjusted conditional logistic regression models stratified by

363 vaccination status, the strongest protective effects of humoral antibody levels against reinfection

364 were noted among those with a third dose of vaccine; among those unvaccinated or with two
365 doses of vaccine, protective effects of antibody levels were suggested but statistical significance
366 was not consistent across all groups. Likelihood ratio tests assessing the interaction between
367 vaccination status and antibody titers had p-values of 0.12 and 0.07 for RBD and S2 end titer,
368 respectively, indicating evidence of a potential difference by vaccination status. For
369 unvaccinated individuals, each three-fold increase in RBD and S2 end titer value was estimated
370 to reduce the odds of reinfection by 23% and 18%, respectively, although the estimate for S2 was
371 not statistically significant (RBD aOR: 0.77, 95% CI: [0.65, 0.92]; S2 aOR: 0.82, 95% CI: [0.64,
372 1.04]) (Table 3). For unvaccinated individuals, compared to an RBD end titer value of 1:60, risk
373 was reduced by 50% between end titer values of 1:540 and 1:1620, respectively (Fig 3).

374
375 **Fig 4. Adjusted relative risk reduction in reinfection with Omicron among frontline**
376 **workers in the HEROES/RECOVER cohort infection by humoral antibody titer levels with**
377 **95% confidence intervals^a using end titer level of 1:60 as the reference and stratified by**
378 **number of origin strain WA-1 monovalent mRNA COVID-19 vaccine doses.**

379 Samples where antibody response was still detected at the final dilution were imputed to 1:9720.
380 Among unvaccinated individuals, the estimated percent reduction was 50% between the 1:540
381 and 1:1620 dilution for RBD. Among individuals with 3 prior COVID-19 vaccine doses, the
382 estimated percent reduction was 50% between the 1:60 and 1:180 dilution.

383 ^a95% confidence interval only available for models with a statistically significant coefficient for
384 end titer when alpha is 0.05.

385

386 For individuals vaccinated with two doses of vaccine following their first infection, each
387 three-fold increase in RBD and S2 end titer value was estimated to reduce the odds of reinfection
388 by 27% and 16%, respectively; however, both of these estimates were not statistically significant
389 (RBD aOR: 0.73, 95% CI: [0.44, 1.21]; S2 aOR: 0.84, 95% CI: [0.54, 1.30]) (Tables 3).

390 For individuals with three origin strain WA-1 monovalent COVID-19 mRNA vaccine
391 doses following their first infection, each three-fold increase in RBD and S2 end titer values
392 reduced the estimated odds of reinfection by 58% and 59%, respectively (RBD aOR: 0.42, 95%
393 CI: [0.22, 0.84]; S2 aOR: 0.41, 95% CI: [0.21, 0.80]) (Table 3). Compared to RBD and S2 end
394 titer values of 1:60, risk was reduced by 50% at end titer values between 1:60 and 1:180 for each
395 (Fig 3). Models including AUC data as our antibody measurement had similar results. Full
396 results including estimates for all variables included in the models can be found in the
397 supplemental material (S5 and S6 Tables).

398 **Discussion**

399 In this analysis of frontline workers from eight US locations, higher levels of RBD
400 antibodies were associated with protection against first-time post-vaccination infection and
401 reinfection with Omicron. The risk of first-time post-vaccination infection with Omicron
402 following a third dose of monovalent mRNA vaccine was reduced by 21% for each three-fold
403 increase in RBD end titer, with estimated 50% risk reductions achieved at end titers between
404 1:540 and 1:1620. The magnitude of risk reduction against reinfection depended on vaccination
405 status, with some evidence that this difference was significant based on p-values from likelihood
406 ratio tests of 0.12 and 0.07 for RBD and S2 end titers, respectively. For unvaccinated individuals
407 with a prior infection, a 3-fold increase in RBD reduced reinfection risk by 23%. There were no
408 statistically significant protective effects for those with a previous infection and two origin strain

409 WA-1 monovalent COVID-19 mRNA doses following infection. However, for individuals with
410 three vaccine doses following their first infection, a 3-fold increase in RBD end titer value
411 reduced reinfection risk by 58%, with estimated 50% reductions in SARS-CoV-2 reinfection risk
412 occurring at end titers between 1:60 and 1:180. The protective effect of higher antibody levels
413 was robust in those with a third dose of vaccine, regardless of previous infection status.
414 However, those with previous infection showed a 50% reduction in risk at lower titers compared
415 to those who were not previously infected, though we could not test this difference for statistical
416 significance [4].

417 These findings build on previous literature reporting correlates of protection against
418 SARS-CoV-2 infection in different populations and at different points during the pandemic.
419 Early vaccine efficacy trials in the US found higher post-vaccination end titers in vaccine
420 recipients to be associated with higher vaccine efficacy [2]. Similarly, early SARS-CoV-2 post-
421 vaccination infections associated with the Alpha variant among healthcare workers in Israel were
422 associated with lower neutralizing antibody titers in the peri-infection period [20]. In a household
423 transmission study of Delta variant infections, both quantitative ELISA and neutralizing antibody
424 titers were protective against secondary Delta infection, with titers over 1:1000 providing an
425 immunologic threshold for protection [21]. Other studies examining the role of antibody levels
426 and functional protection against Omicron infection have shown mixed results [22, 23]. One
427 potential explanation as to why serologic antibody levels could be less protective against
428 Omicron infection is that, compared to previous variants, Omicron is relatively confined to the
429 upper respiratory tract and therefore higher mucosal antibody threshold levels could be required
430 to prevent infection [24]. This provides a potential explanation for why 50% risk reductions in
431 this study were achieved at higher end titer levels for individuals with three vaccines and no

432 previous infection compared to lower titer levels for those with a previous infection followed by
433 three vaccine doses. These findings in combination with previous studies underscore the
434 importance of considering both vaccination and infection history, as well as number of immune
435 conferring events, when estimating functional protection against SARS-CoV-2 infection [25-29].

436 This study is subject to several limitations. First, because the semi-quantitative ELISA
437 assessed only five dilutions, and many individuals had an immune response at the highest
438 dilution, ability to differentiate individuals with a response above the highest dilution is limited.
439 Additionally, treating this outcome as a continuous measure assumes linearity in the log-odds for
440 each 3-fold increase in titer level. However, our models with AUC as the outcome, which is less
441 sensitive to any potential ceiling effects, had similar results to the models using end titer data (S3
442 and S5 Tables), which helps confirm our end titer results [30]. Second, neutralizing antibodies
443 are typically the gold standard in assessing correlates of protection, and for these analyses, a
444 surrogate measure of semi-quantitative ELISA was used. However, antibodies measured via the
445 semi-quantitative ELISA assay used in this study are known to correlate closely with
446 neutralization of live SARS-CoV-2 virus [17, 31]. We only ran ELISAs against the origin strain
447 WA-1 strain of SARS-CoV-2, meaning that specific antibodies against the Omicron variant may
448 differ from the results found here. Third, although the reinfection study data were matched on the
449 interval between the most recent immune conferring event (first infection or vaccination) and
450 blood draw, the residual differences in those times between the cases and controls may have
451 provided some residual confounding. Additionally, differences in mean time intervals between
452 the two analytic samples, as well as waning antibodies for samples that were further away from
453 the previous immune-conferring event, may affect direct comparisons in results. Fourth, the
454 HEROES/RECOVER cohort consists of frontline workers, and therefore these findings may not

455 be generalizable beyond relatively healthy populations and populations with regular exposure to
456 SARS-CoV-2. Due to this healthy population, we were unable to evaluate severe disease as an
457 outcome. Finally, participants are subject to misclassification when determining eligibility for
458 the two case-control cohorts and case or control status. Since we were limited to using RBD and
459 S2 when determining prior infection at baseline, we solely relied on self-reported data for
460 individuals who were vaccinated at baseline, and misclassification could occur if any of these
461 participants incorrectly reported or failed to report a pre-study infection. Strengths of this study
462 include its large sample size, its representativeness of Hispanic/Latino populations consistent
463 with US demographic trends, and weekly active surveillance for infections regardless of
464 symptoms.

465 In a population of frontline workers with diverse immunological histories, those with
466 higher antibody levels had consistently lower risk of Omicron infection. Antibody correlates of
467 protection against first-time post-vaccination infection and reinfection could be estimated for
468 individuals who had received a third dose of a vaccine: odds of first-time post-vaccination
469 infection were reduced by 21% for each 3-fold increase in RBD end titers, while the odds of
470 reinfection were reduced by 58% for each 3-fold increase in RBD end titers for individuals with
471 three mRNA vaccine doses following their first infection. Although we were able to estimate
472 these reductions separately for each group, we were unable to statistically compare these two
473 cohorts. Findings underscore the importance of immunologic heterogeneity, and contribution of
474 hybrid immunity, when estimating functional protection against SARS-CoV-2 infection. Future
475 studies could assess the Omicron-specific correlates of protection using surrogate or authentic
476 neutralization assays, which could enable more credible interpretations about functional

477 protection against currently circulating strains, especially with the continued updates to COVID-
478 19 vaccines [32].

479

480 **Acknowledgments**

481 CDC: Eduardo Azziz-Baumgartner, Melissa L. Arvay, William Brannen, Stephanie Bialek,
482 Allison Ciesla, Alicia M. Fry, Aron Hall, Adam MacNeil, Clifford McDonald, Sue Reynolds,
483 Robert Slaughter, Matthew J. Stuckey, Rose Wang, Ryan Wiegand; Abt Associates: Steve
484 Pickett, Rekha Balachandran, Kim Groover, Deanna Fleary, Peenaz Mistry; BSWH: Kayan
485 Dunnigan, Nicole Calhoun, Leah Odame-Bamfo, Clare Mathenge, Michael E. Smith,
486 Kempapura Murthy, Tnelda Zunie, Eric Hoffman, Martha Zayed, Ashley Graves, Joel Blais,
487 Jason Ettlinger, Sharla Russell, Natalie Settele, Tiya Searcy, Rupande Patel, Elisa Priest, Jennifer
488 Thomas, Muralidhar Jatla, Madhava Beeram, Javed Butler, Alejandro Arroliga; KPNW: Holly
489 Groom, Yolanda Prado, Daniel Sapp, Mi Lee, Chris Eddy, Matt Hornbrook, Donna Eubanks,
490 Danielle Millay, Dorothy Kurdyla, Kristin Bialobok, Ambrosia Bass, Kristi Bays, Kimberly
491 Berame, Cathleen Bourdoin, Rashyra Brent, Carlea Buslach, Lantoria Davis, Stephen Fortmann,
492 Jennifer Gluth, Kenni Graham, Tarika Holness, Kelley Jewell, Enedina Luis, Abreeanah
493 Magdaleno, DeShaun Martin, Joyce Smith-McGee, Martha Perley, Sam Peterson, Aaron Peipert,
494 Krystil Phillips, Joanna Price, Ana Reyes, Sperry Robinson, Katrina Schell, Emily Schield,
495 Natosha Shirley, Anna Shivinsky, Valencia Smith, Britta Torgrimson-Ojerio, Brooke
496 Wainwright, Shawn Westaway; Marshfield Clinic Research Laboratory: Saydee Benz, Adam
497 Bissonnette, Krystal Boese, Emily Botten, Jarod Boyer, Michaela Braun, Julianne Carlson, Caleb
498 Cravillion, Amber Donnerbauer, Tim Dziedzic, Joe Eddy, Heather Edgren, Alex Ermeling,
499 Kelsey Ewert, Connie Fehrenbach, Rachel Fernandez, Wayne Frome, Sherri Guzinski, Mitch

500 Hertel, Garrett Heuer, Erin Higdon, Cressa Huotari, Lynn Ivacic, Lee Jepsen, Steve Kaiser,
501 Bailey Keffer, Tammy Koepel, Sarah Kohn, Alaura Lemieux, Carrie Marcis, Megan Maronde,
502 Isaac McCready, Nidhi Mehta, Dan Miesbauer, Collin Nikolai, Brooke Olson, Jeremy Olstadt,
503 Lisa Ott, Cory Pike, Nicole Price, Chris Reardon, Alex Slenczka, Elisha Stefanski, Lydia
504 Sterzinger, Kendra Stoltz, Melissa Strupp, Lyndsay Watkins, Roxann Weigel, Ben
505 Zimmerman; University of Miami: Damena Gallimore-Wilson, Roger Noriega, Cynthia Beaver,
506 Alexandra Cruz, Annabel Reyes, Brigitte Madan, Addison Testoff, John Jones; St. Luke's:
507 Jessica Lundgren, Karley Respet, Angela Hunt, Jennifer Viergutz, Daniel Stafki, Mary
508 Robinson, Elizabeth Kaplan, Jill Dolezilek, Leiah Hoffman, Tyna O'Connor, Abbigail Hagen,
509 Catherine Diluzio, Samantha Kendrick, Marilyn J. Odean; University of Arizona: Ariyah
510 Armstrong, Nora Baccam, Zoe Baccam, Tatum Butcher, Shelby Capell, Andrea Carmona,
511 Karysa Carson, Alissa Coleman, Hannah Cowling, Carly Deal, Kiara Earley, Sophie Evans, Julia
512 Fisher, Ashlyn Flangos, Joe K. Gerald, Lynn Gerald, Anna Giudici, Erika Goebert, Taylor
513 Graham, Sofia Grijalva, Hanna Hanson, Olivia Healy, Chloe Hendrix, Katherine Herder,
514 Adrianna Hernandez, Raven Hilyard, Rezwana Islam, Krystal S. Jovel, Caroline Klinck, Karl
515 Krupp, Karla Ledezma, Sally Littau, Amelia Lobos, Ashley Lowe, Jeremy Makar, Natalya
516 Mayhew, Kristisha Mevises, Flavia Nakayima Miiro, Cierra Morris, Sarah Murray,
517 Janko Nikolich-Žugich, Assumpta Nsengiyunva, Kennedy Obrien, Mya Pena, Riley Perlman,
518 Celia Pikowski, Ferris A. Ramadan, Patrick Rivers, Jen Scott, Priyanka Sharma, Alison Slocum,
519 Saskia Smidt, Lili Steffen, Jayla Sowell, Danielle Stea, Xiaoxiao Sun, Nicholas Tang, Gianna
520 Taylor, Ta'Nya Tomas, Heena Timsina, Italia Trejo, April Yingst; University of Utah: Rachel T.
521 Brown, Matthew Bruner, Riley Campbell, Aniyah Colston, Brianna Cottam, Chapman Cox,
522 Kendal Chatard, Ben Cragun, Daniel Dawson, Anika Dsouza, Emilee Eden, Amanda Flanagan,

523 Colton Fox, Adriele Fugal, Nikki Gallacher, Michelle Gillette, Joshua Griffin, Christian
524 Guzman, Isaac Hansen, Addie Hunsaker, Iman Ibrahim, Nada Jabbouri, Junny Jeong, Ryder
525 Jordin, Tori Joy, Michael Langston, Alexis Lowe, Katie Luong, Aurianna Martin, Gretchen
526 Maughan, Jinyi Mao, Jeanmarie Mayer, Katy McCone, Renee McEntire, Jacob McKell, Tiana
527 Miller, Max Minoughan, Naveen Naveed, Jessica Olsen, Christina Pick, Timina Powaukee,
528 Jenna Praggastis, Lily Prentice, Seon Reed, Amber Rhodes, Griffin Rost, Camie Schaefer,
529 Ashmita Shanthakumar, Madeleine Smith, Joseph Stanford, Grace Stewart, Pasha Stinson,
530 Trevor Stubbs, Marcus Stucki, Madison Tallman, Sydney Taylor, Kathy Tran, Fiona
531 Tsang, Irene Tucker, Maya Wheeler, Megan Wilson, Jesse Williams, Derrick Wong,
532 Jenna Vo, Hannah Whiting, Iris Yang, Karly Anderson, Ian Arlington, Arlyne Arteaga,
533 Braydon Black, Brock Bourdelle.

534

535 Special thanks to the firefighters, healthcare workers, and frontline and essential workers who
536 participated in this cohort study.

537

538 **References**

- 539 1. Reynolds CJ, Gibbons JM, Pade C, Lin K-M, Sandoval DM, Pieper F, et al. Heterologous
540 infection and vaccination shapes immunity against SARS-CoV-2 variants. *Science*.
541 2022;375(6577):183-92.
- 542 2. Gilbert PB, Montefiori DC, McDermott AB, Fong Y, Benkeser D, Deng W, et al.
543 Immune correlates analysis of the mRNA-1273 COVID-19 vaccine efficacy clinical trial.
544 *Science*. 2022;375(6576):43-50.

- 545 3. Herring MK, Romine JK, Wesley MG, Ellingson KD, Yoon SK, Caban-Martinez AJ, et
546 al. Severe Acute Respiratory Syndrome Coronavirus 2 Infection History and Antibody Response
547 to 3 Coronavirus Disease 2019 Messenger RNA Vaccine Doses. *Clinical Infectious Diseases*.
548 2022;ciac976.
- 549 4. Gilboa M, Regev-Yochay G, Mandelboim M, Indenbaum V, Asraf K, Fluss R, et al.
550 Durability of Immune Response After COVID-19 Booster Vaccination and Association With
551 COVID-19 Omicron Infection. *JAMA Network Open*. 2022;5(9):e2231778.
- 552 5. Fu J, Shen X, Anderson M, Stec M, Petratos T, Cloherty G, et al. Correlation of Binding
553 and Neutralizing Antibodies against SARS-CoV-2 Omicron Variant in Infection-Naïve and
554 Convalescent BNT162b2 Recipients. *Vaccines*. 2022;10(11):1904.
- 555 6. Spinardi JR, Srivastava A. Hybrid Immunity to SARS-CoV-2 from Infection and
556 Vaccination—Evidence Synthesis and Implications for New COVID-19 Vaccines.
557 *Biomedicines*. 2023;11(2):370.
- 558 7. Koup RA, Donis RO, Gilbert PB, Li AW, Shah NA, Houchens CR. A government-led
559 effort to identify correlates of protection for COVID-19 vaccines. *Nature Medicine*.
560 2021;27(9):1493-4.
- 561 8. Coudeville L, Bailleux F, Riche B, Megas F, Andre P, Ecochard R. Relationship between
562 haemagglutination-inhibiting antibody titres and clinical protection against influenza:
563 development and application of a bayesian random-effects model. *BMC Med Res Methodol*.
564 2010;10:18.
- 565 9. Nakaya HI, Hagan T, Duraisingham SS, Lee EK, Kwissa M, Roupheal N, et al. Systems
566 Analysis of Immunity to Influenza Vaccination across Multiple Years and in Diverse Populations
567 Reveals Shared Molecular Signatures. *Immunity*. 2015;43(6):1186-98.

- 568 10. Ridgway JP, Tideman S, French T, Wright B, Parsons G, Diaz G, et al. Odds of
569 Hospitalization for COVID-19 After 3 vs 2 Doses of mRNA COVID-19 Vaccine by Time Since
570 Booster Dose. *JAMA*. 2022;328(15):1559.
- 571 11. Plotkin SA. Correlates of protection induced by vaccination. *Clin Vaccine Immunol*.
572 2010;17(7):1055-65.
- 573 12. Dadras O, Seyedalinalghi SA, Karimi A, Shojaei A. COVID-19 Vaccines' Protection Over
574 Time and the Need for Booster Doses; a Systematic Review. *Archives of Academic Emergency*
575 *Medicine*. 2022;10(1).
- 576 13. Nealon J, Cowling BJ. Uncertainties About the Optimal Timing of Fourth Dose of
577 COVID-19 Vaccines. *JAMA Network Open*. 2022;5(7):e2223096-e.
- 578 14. Lutrick K, Ellingson KD, Baccam Z, Rivers P, Beitel S, Parker J, et al. COVID-19
579 Infection, Reinfection, and Vaccine Effectiveness in Arizona Frontline and Essential Workers:
580 Protocol for a Longitudinal Cohort Study. *JMIR Res Protoc*. 2021;10(6):e28925.
- 581 15. Edwards LJ, Fowlkes AL, Wesley MG, Kuntz JL, Odean MJ, Caban-Martinez AJ, et al.
582 Research on the Epidemiology of SARS-CoV-2 in Essential Response Personnel (RECOVER):
583 Protocol for a Multisite Longitudinal Cohort Study. *JMIR Res Protoc*. 2021;10(12):e31574.
- 584 16. Prevention CfDca. COVID data tracker: variant proportions 2023 [cited 2023 Aug 28].
- 585 17. Ripperger TJ, Uhrlaub JL, Watanabe M, Wong R, Castaneda Y, Pizzato HA, et al.
586 Orthogonal SARS-CoV-2 Serological Assays Enable Surveillance of Low-Prevalence
587 Communities and Reveal Durable Humoral Immunity. *Immunity*. 2020;53(5):925-33.e4.
- 588 18. Ng S, Fang VJ, Ip DK, Chan KH, Leung GM, Peiris JS, et al. Estimation of the
589 association between antibody titers and protection against confirmed influenza virus infection in
590 children. *J Infect Dis*. 2013;208(8):1320-4.

- 591 19. Black S, Nicolay U, Vesikari T, Knuf M, Del Giudice G, Della Cioppa G, et al.
592 Hemagglutination Inhibition Antibody Titers as a Correlate of Protection for Inactivated
593 Influenza Vaccines in Children. *The Pediatric Infectious Disease Journal*. 2011;30(12):1081-5.
- 594 20. Bergwerk M, Gonen T, Lustig Y, Amit S, Lipsitch M, Cohen C, et al. Covid-19
595 Breakthrough Infections in Vaccinated Health Care Workers. *New England Journal of Medicine*.
596 2021;385(16):1474-84.
- 597 21. Regev-Yochay G, Lustig Y, Joseph G, Gilboa M, Barda N, Gens I, et al. Correlates of
598 protection against COVID-19 infection and intensity of symptomatic disease in vaccinated
599 individuals exposed to SARS-CoV-2 in households in Israel (ICoFS): a prospective cohort study.
600 *The Lancet Microbe*. 2023;4(5):e309-e18.
- 601 22. Asamoah-Boaheng M, Goldfarb DM, Karim ME, SF OB, Wall N, Drews SJ, et al. The
602 Relationship Between Anti-Spike SARS-CoV-2 Antibody Levels and Risk of Breakthrough
603 COVID-19 Among Fully Vaccinated Adults. *J Infect Dis*. 2023;227(3):339-43.
- 604 23. Lee J, Park S, Kim JY, Lim SY, Chang E, Bae S, et al. No correlation of neutralizing
605 antibody titers against the Omicron variant after a booster dose of COVID-19 vaccines with
606 subsequent breakthrough Omicron infections among healthcare workers. *Journal of Infection*.
607 2022;85(6):e177-e80.
- 608 24. Hui KPY, Ho JCW, Cheung MC, Ng KC, Ching RHH, Lai KL, et al. SARS-CoV-2
609 Omicron variant replication in human bronchus and lung ex vivo. *Nature*. 2022;603(7902):715-
610 20.
- 611 25. Dimeglio C, Miguères M, Chapuy-Regaud S, Da-Silva I, Jouglu I, Pradere C, et al.
612 Comparative effects of mRNA vaccine booster and natural Omicron infection on the neutralizing
613 antibody response. *Journal of Infection*. 2022;85(1):e4-e6.

- 614 26. Dphil NB. Protective effectiveness of previous SARS-CoV-2 infection and hybrid
615 immunity against the omicron variant and severe disease: a systematic review and meta-
616 regression. 2023;23.
- 617 27. de Gier B, Huiberts AJ, Hoeve CE, den Hartog G, van Werkhoven H, van Binnendijk R,
618 et al. Effects of COVID-19 vaccination and previous infection on Omicron SARS-CoV-2
619 infection and relation with serology. *Nature Communications*. 2023;14(1):4793.
- 620 28. Wei J, Matthews PC, Stoesser N, Newton JN, Diamond I, Studley R, et al. Protection
621 against SARS-CoV-2 Omicron BA.4/5 variant following booster vaccination or breakthrough
622 infection in the UK. *Nature Communications*. 2023;14(1):2799.
- 623 29. Wei J, Pouwels KB, Stoesser N, Matthews PC, Diamond I, Studley R, et al. Antibody
624 responses and correlates of protection in the general population after two doses of the ChAdOx1
625 or BNT162b2 vaccines. *Nature Medicine*. 2022;28(5):1072-82.
- 626 30. Yu X, Gilbert PB, Hioe CE, Zolla-Pazner S, Self SG. Statistical approaches to analyzing
627 HIV-1 neutralizing antibody assay data. *Stat Biopharm Res*. 2012;4(1):1-13.
- 628 31. Stone M, Grebe E, Sulaeman H, Di Germanio C, Dave H, Kelly K, et al. Evaluation of
629 Commercially Available High-Throughput SARS-CoV-2 Serologic Assays for Serosurveillance
630 and Related Applications. *Emerg Infect Dis*. 2022;28(3):672-83.
- 631 32. Benkeser D, Montefiori DC, McDermott AB, Fong Y, Janes HE, Deng W, et al.
632 Comparing antibody assays as correlates of protection against COVID-19 in the COVE mRNA-
633 1273 vaccine efficacy trial. *Science Translational Medicine*. 2023;15(692):eade9078.

634

635 **Supporting information**

636

637 **S1 Table. Demographic information for reinfection correlates of protection nested case-**
638 **control cohort from AZHEROES/RECOVER, stratified by vaccination status.**

639 ^aAll vaccine doses are monovalent origin strain WA-1 mRNA vaccines.

640 ^bOther essential workers include occupation sectors with potentially high exposures to SARS-
641 CoV-2 such as education, agriculture, public transportation services, waste collection, delivery,
642 utilities, community-based services, childcare, and others.

643 ^cChronic conditions include asthma, chronic lung disease, cancer, diabetes, heart disease,
644 hypertension, immunosuppression, kidney disease, liver disease, neurologic or neuromuscular
645 disease or disorder, and autoimmune disease.

646 ^dParticipants are asked “Are you currently taking prednisone or other ongoing steroid
647 medications (excluding inhaled steroids and one-time injections) or any other medications that
648 may suppress your body's ability to fight infection?”.

649 ^eICE (immune conferring event) is the third vaccine dose for the first-time post-vaccination
650 infection with Omicron cohort and the 3 dose strata within the reinfection cohort, the second
651 vaccine dose for the 2 dose strata within the reinfection cohort, and the initial SARS-CoV-2
652 infection for the unvaccinated strata within the reinfection cohort.

653 ^fExposure to individuals infected with SARS-CoV-2.

654 ^gReported personal protective equipment (PPE) adherence at work was defined as the percentage
655 of time in which an individual uses the PPE recommended by their employer when in direct
656 contact with people.

657

658 **S2 Table. Count and descriptive statistics of quantitative antibody results for reinfection**
659 **correlates of protection cohort from AZHEROES/RECOVER, stratified by vaccination**
660 **status.**

661
662 **S3 Table. Results from conditional logistic regression model with RBD and S2 AUC values**
663 **for first-time post-vaccination infection with Omicron following third COVID-19 origin**
664 **strain WA-1 monovalent mRNA vaccine dose correlates of protection cohort from**
665 **AZHEROES/RECOVER (n=1226).**

666 Abbreviations: OR: odds ratio; CI: confidence interval.

667 Odds ratio represents odds of being a case for each standard deviation increase in AUC.

668 Cases were defined as individuals who became infected with Omicron after receiving three
669 origin strain WA-1 monovalent COVID-19 vaccine doses and no prior infections. Cases and
670 controls were matched on number of days between blood draw and third vaccine dose, and study
671 site.

672 *Statistically significant at alpha = 0.05.

673
674 **S4 Table. Results from conditional logistic regression model with RBD and S2 AUC values**
675 **for the reinfection correlates of protection cohort from HEROES/RECOVER.**

676 Abbreviations: OR: odds ratio; CI: confidence interval.

677 Odds ratio represents odds of being a case for each standard deviation increase in AUC.

678 ^aCases were defined as individuals who became reinfected with SARS-CoV-2 while
679 unvaccinated. Both cases and controls were unvaccinated at the time of their blood draw.

680 ^bCases were defined as individuals who became reinfected with SARS-CoV-2. Both cases and
681 controls were unvaccinated at time of initial infection, then received 2 doses of an origin strain
682 WA-1 monovalent COVID-19 vaccine prior to any potential reinfection. Blood draw for both
683 cases and controls occurred after the 2nd dose.

684 ^cCases were defined as individuals who became reinfected with SARS-CoV-2. Both cases and
685 controls were unvaccinated at time of initial infection, then received 3 doses of an origin strain
686 WA-1 monovalent COVID-19 vaccine prior to any potential reinfection. Blood draw for both
687 cases and controls occurred after the 3rd dose.

688 ^dAt least one chronic condition versus no chronic conditions.

689 ^eAbove cohort mean versus below cohort mean.

690 *Statistically significant at alpha = 0.05.

691

692 **S5 Table. Unadjusted and adjusted odds ratios (ORs) generated by conditional logistic**
693 **regression models for a nested sample of individuals with first-time post-vaccination**
694 **infection with Omicron following third COVID-19 origin strain WA-1 monovalent mRNA**
695 **vaccine dose and matched controls from the HEROES/RECOVER prospective cohort of**
696 **frontline workers (n=1226).**

697 Abbreviations: OR: odds ratio; CI: confidence interval.

698 Odds ratio represents odds of being a case for each 3-fold increase in end titer. Cases were
699 defined as individuals who became infected with Omicron after receiving three COVID-19
700 vaccine doses. Cases and controls were matched on number of days between blood draw and
701 third vaccine dose, and study site.

702 ^aAt least one chronic condition versus no chronic conditions

703 ^bAbove cohort mean versus below cohort mean

704 *Statistically significant at alpha = 0.05

705

706 **Table S6. Unadjusted and adjusted odds ratios (ORs) generated by conditional logistic**
707 **regression models for a nested sample of individuals with reinfection and matched controls,**
708 **stratified by vaccination status, from the HEROES/RECOVER prospective cohort of**
709 **frontline workers (n=740).**

710 Abbreviations: OR: odds ratio; CI: confidence interval.

711 Odds ratio represents odds of being a case for each 3-fold increase in end titer.

712 ^aCases were defined as individuals who became reinfected with SARS-CoV-2 while
713 unvaccinated. Both cases and controls were unvaccinated at the time of their blood draw.

714 ^bCases were defined as individuals who became reinfected with SARS-CoV-2. Both cases and
715 controls were unvaccinated at time of initial infection, then received 2 doses of an origin strain
716 WA-1 monovalent COVID-19 vaccine prior to any potential reinfection. Blood draw for both
717 cases and controls occurred after the 2nd dose.

718 ^cCases were defined as individuals who became reinfected with SARS-CoV-2. Both cases and
719 controls were unvaccinated at time of initial infection, then received 3 doses of an origin strain
720 WA-1 monovalent COVID-19 vaccine prior to any potential reinfection. Blood draw for both
721 cases and controls occurred after the 3rd dose.

722 ^dAt least one chronic condition versus no chronic conditions.

723 ^eAbove cohort mean versus below cohort mean.

724 *Statistically significant at alpha = 0.05.

725

726 **S1 Fig. Comparison of RBD (panel A) and S2 (panel B) AUC values between cases and**
727 **controls in first-time post-vaccination infection with Omicron nested case-control cohort,**
728 **with difference in means evaluated by paired t-test.**

729

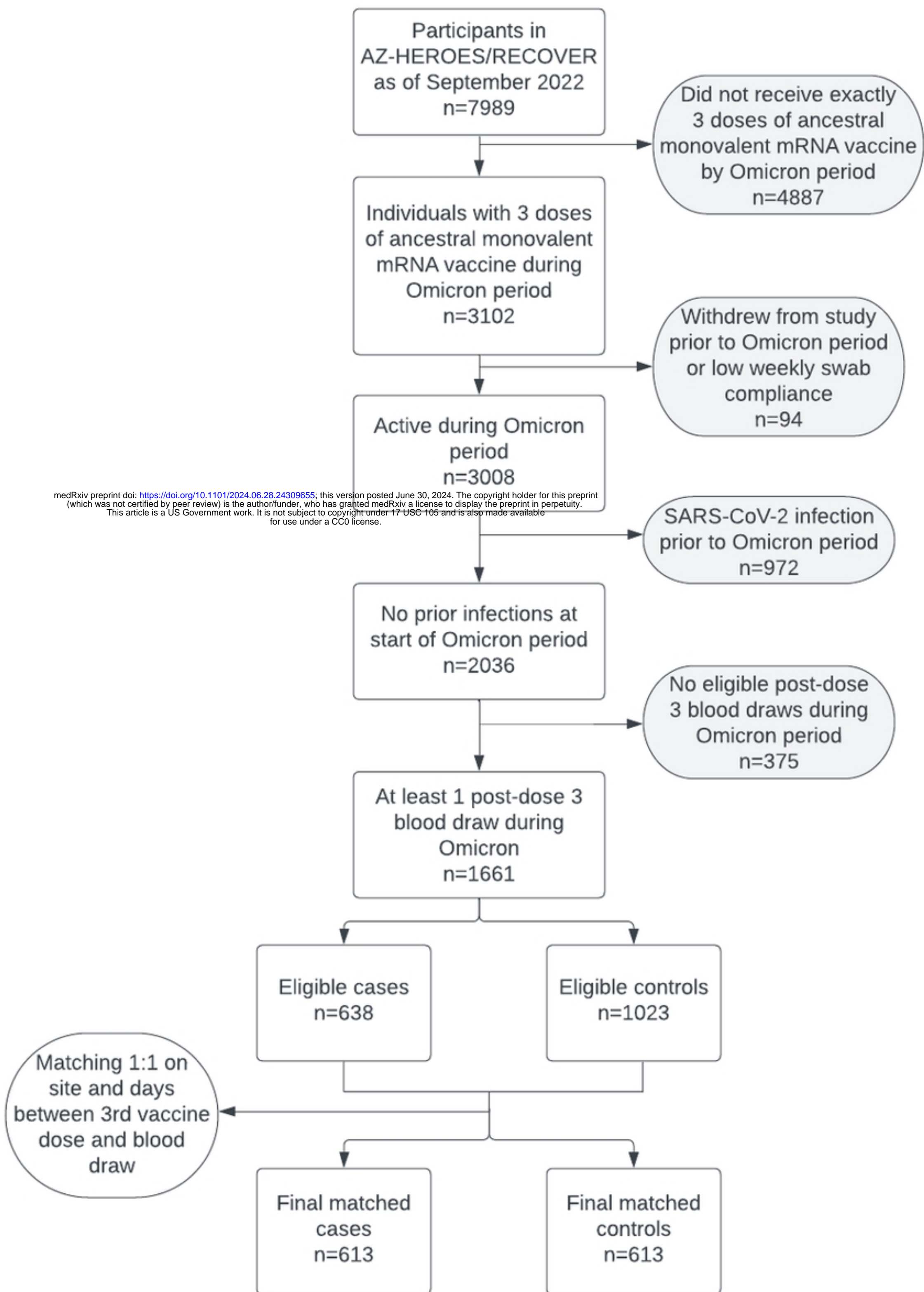
730 **S2 Fig. Comparison of mean RBD (panel A) and S2 (panel B) AUC values between cases**
731 **and controls in reinfection Omicron infection nested case-control cohort, stratified by**
732 **number of origin strain WA-1 monovalent mRNA COVID-19 vaccine doses.**

733

734 **S3 Fig. Flowchart for determining qualitative antibody result using RBD and S2 optical**
735 **density values.**

736

737 **S4 Fig. Flowchart for determining pre-enrollment infections in the HEROES-RECOVER**
738 **cohort.**



medRxiv preprint doi: <https://doi.org/10.1101/2024.06.28.24309655>; this version posted June 30, 2024. The copyright holder for this preprint (which was not certified by peer review) is the author/funder, who has granted medRxiv a license to display the preprint in perpetuity. This article is a US Government work. It is not subject to copyright under 17 USC 105 and is also made available for use under a CC0 license.

Fig1

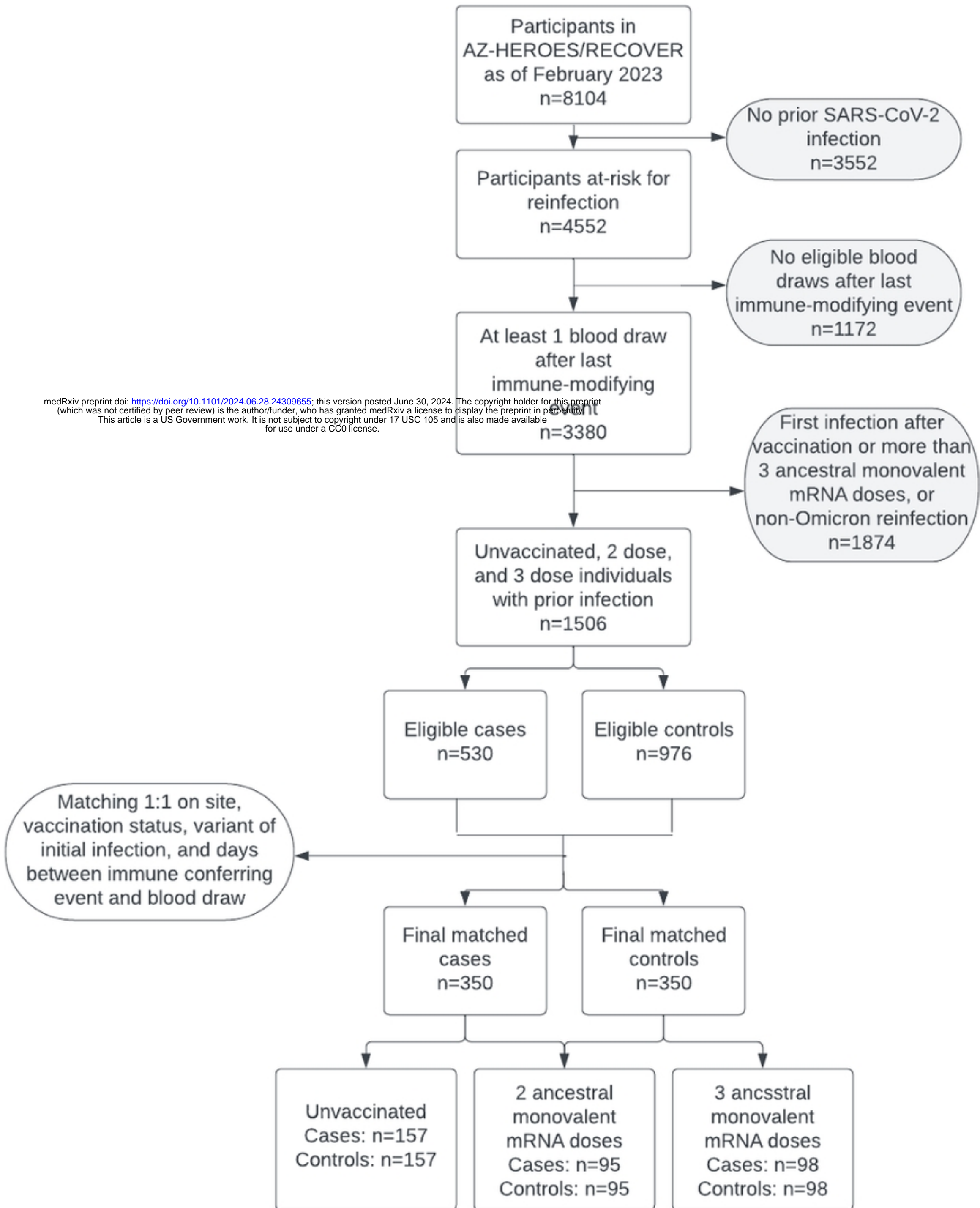


Fig2

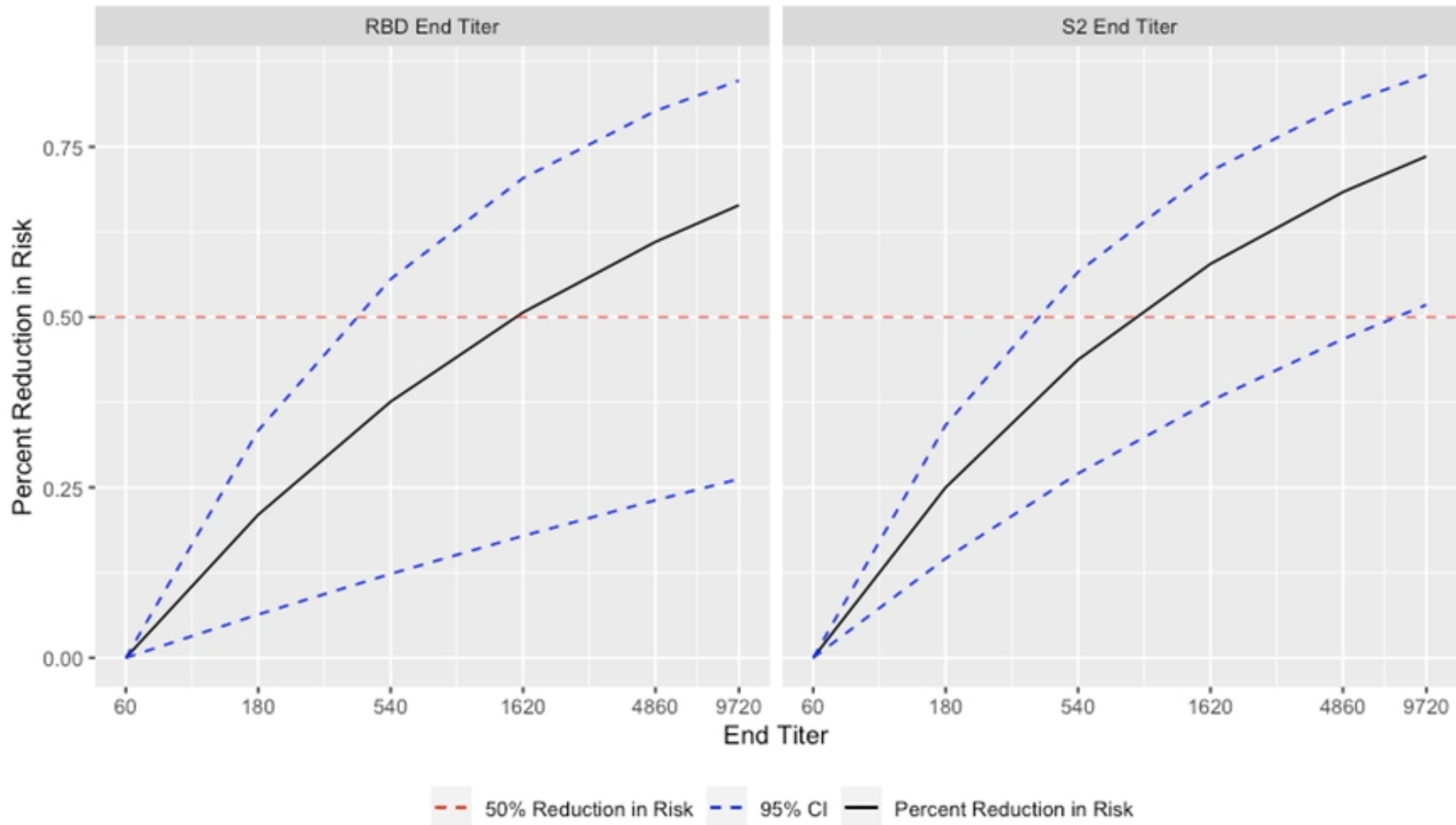


Fig3

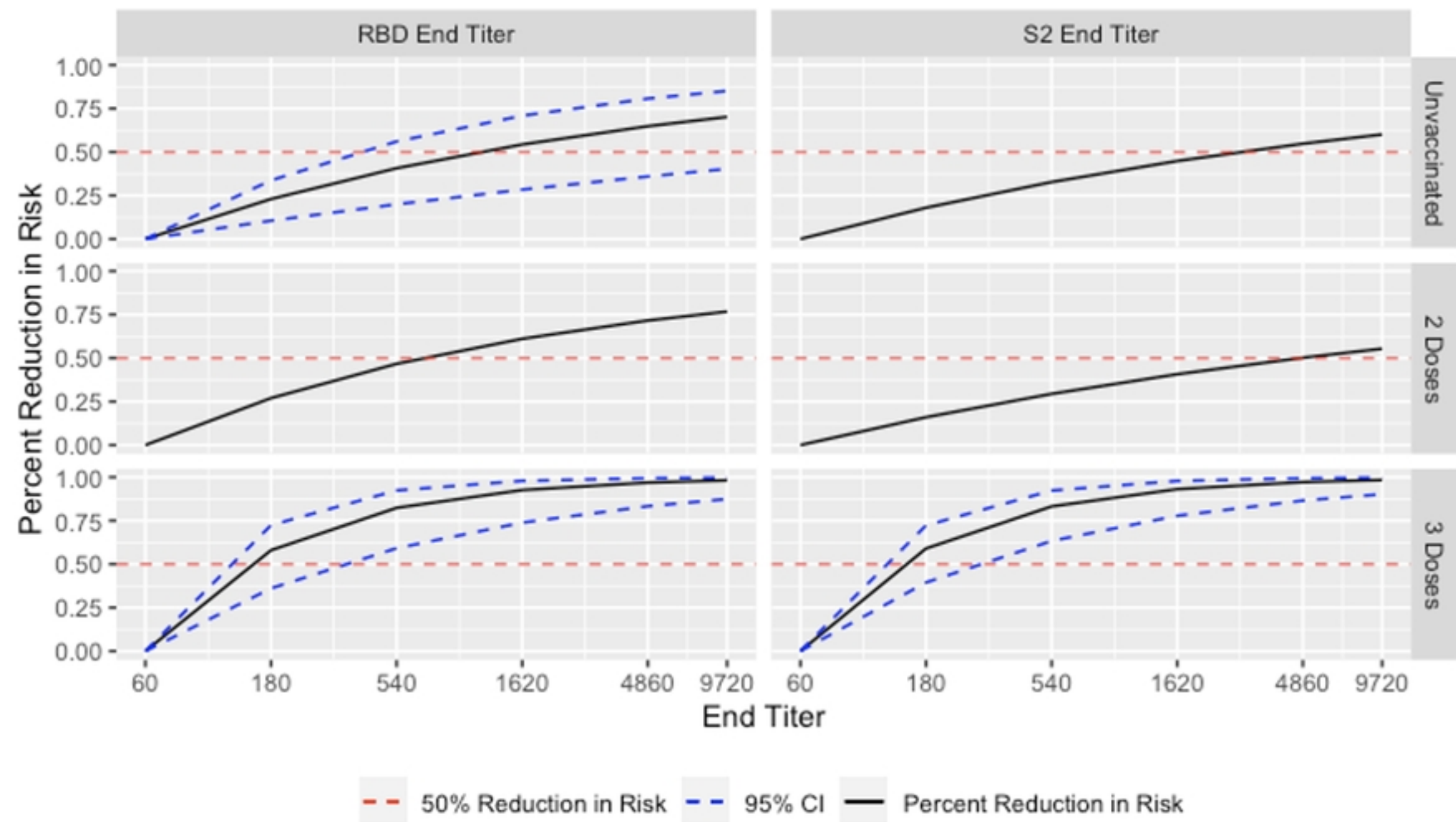


Fig4