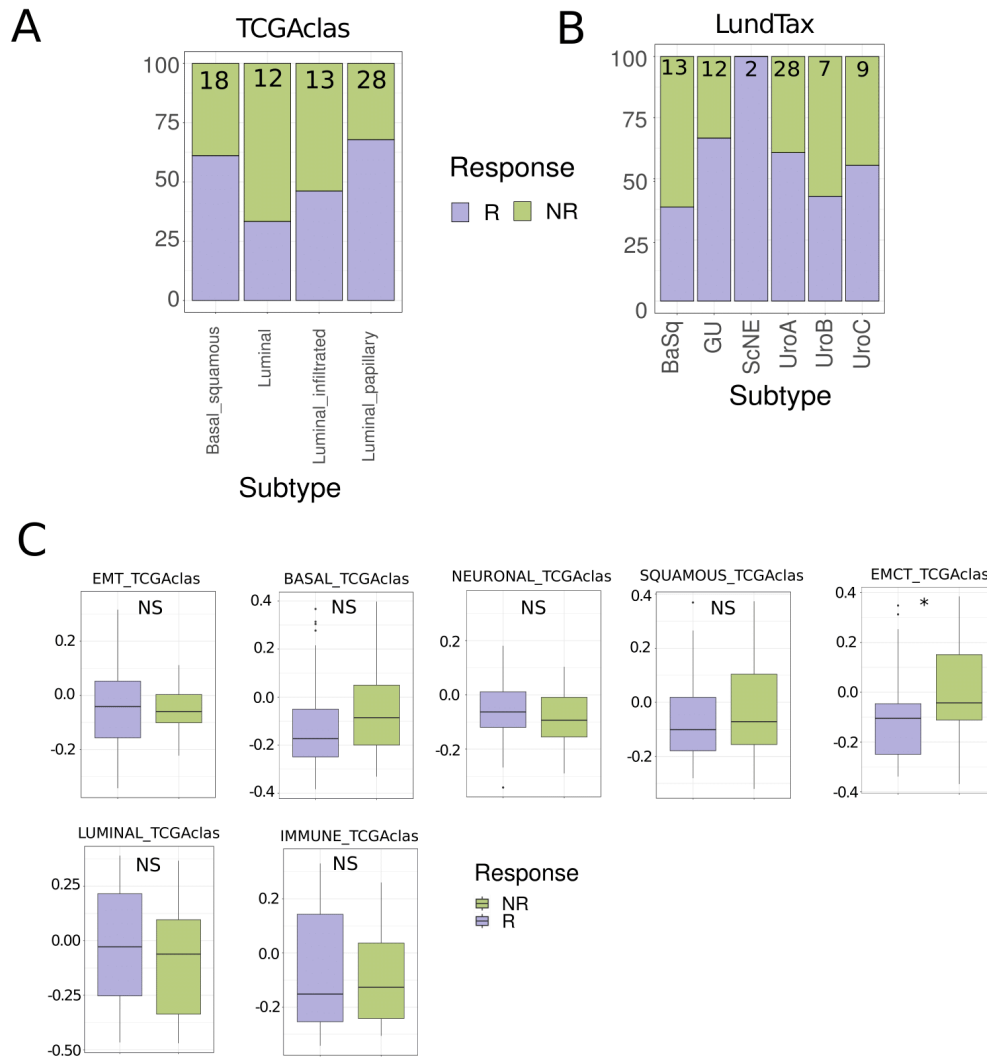
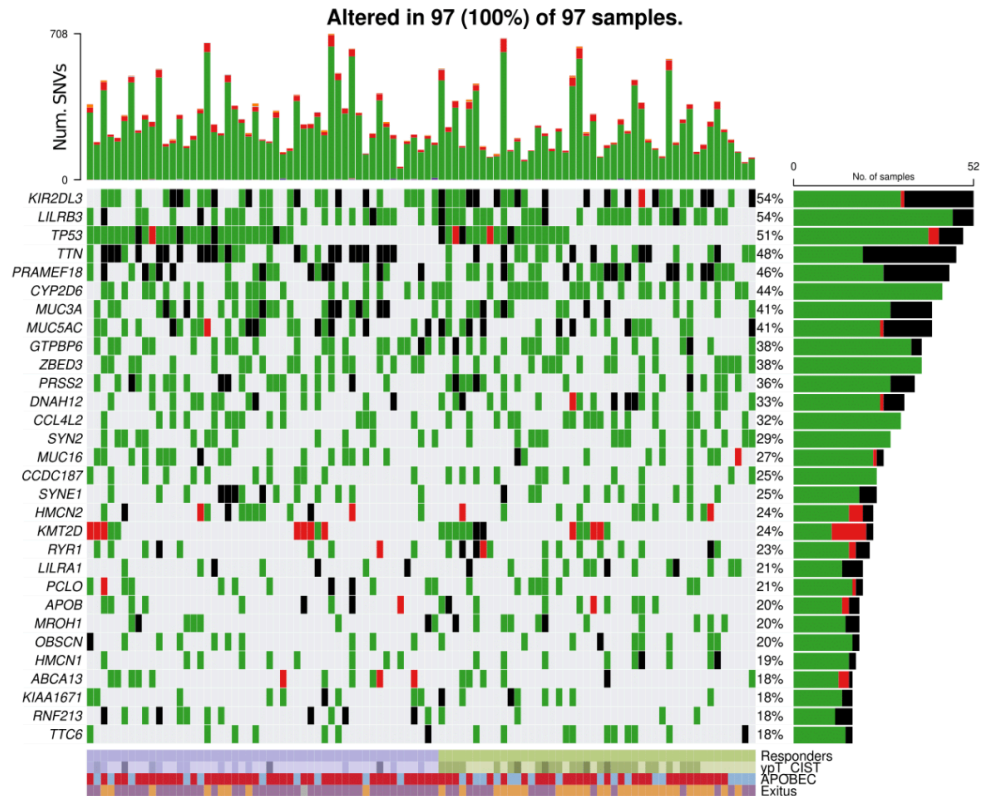


Supplementary Figure 1. WGCNA results and LundTax classifier signatures. A. Dendrogram showing the modules obtained by weighted gene correlation network analysis (WGCNA) ($n=14$) and barplot showing the significant negative correlation between green module and response ($p=0.008$, $cor=-0.32$). **B.** Boxplots showing the differences between R and NR in scores obtained by singscore for different signatures that LundTax uses for molecular subtype classification (KRT_LundTax, MYC_LundTax, BASQ_LundTax, ADHESION_LundTax, SCNE_LundTax, UPKS_LundTax, URODIFF_LundTax, IFGFR3_LundTax, IMMUNE_LundTax, Late_CC_LundTax, STROMAL_LundTax, $p>0.05$. EARLY_CC_LundTax $p=0.028$).

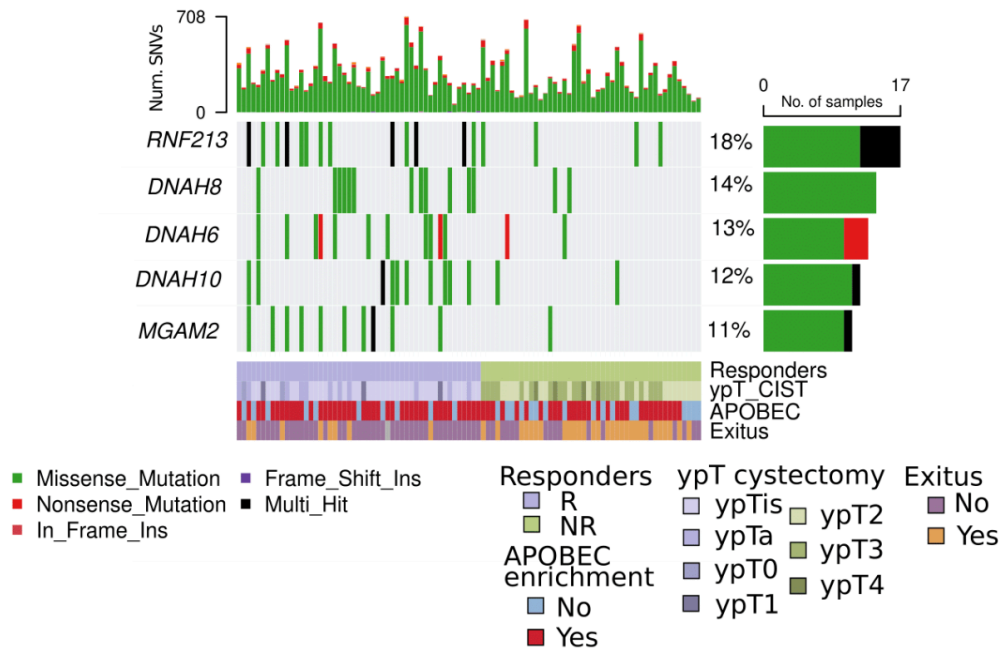


Supplementary Figure 2. Molecular subtype classification results using TCGAclas and LundTax classifier **A.** Proportions of the molecular subtype classification using TCGAclas classifier. **B.** Proportions of the molecular subtype classification using LundTax classifier. **C.** TCGAclas signature scores obtained by singscore and its association with NAC response (EMT_TCGAclas, BASAL_TCGAclas, NEURONAL_TCGAclas, LUMINAL_TCGAclas, IMMUNE_TCGAclas, SQUAMOUS_TCGAclas $p > 0.05$, EMC_TCGAclas $p = 0.03$).

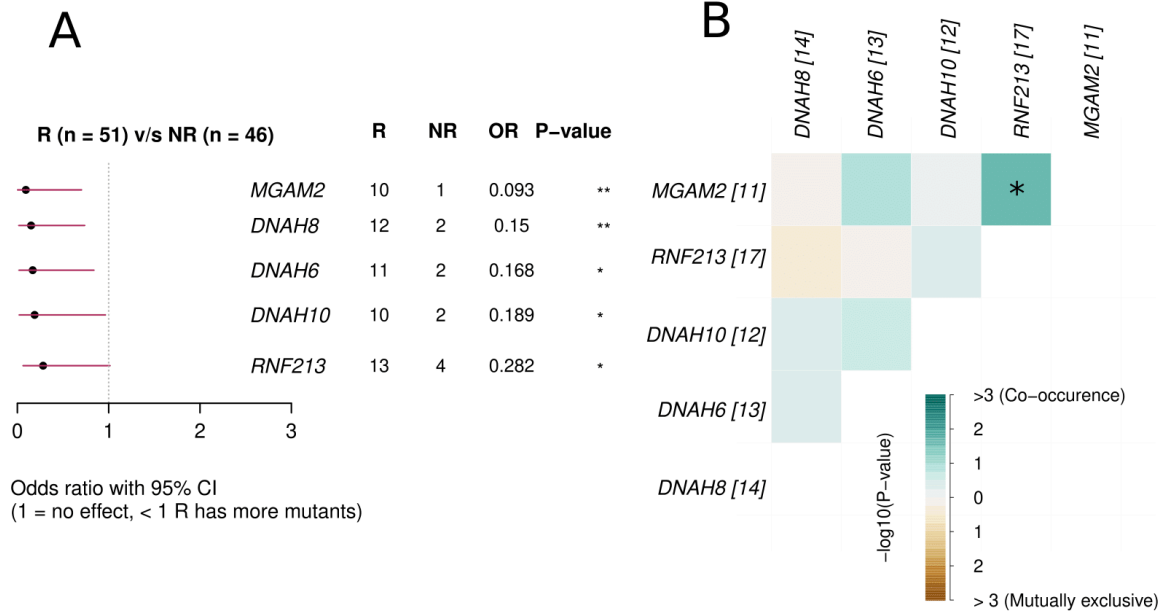
A



B

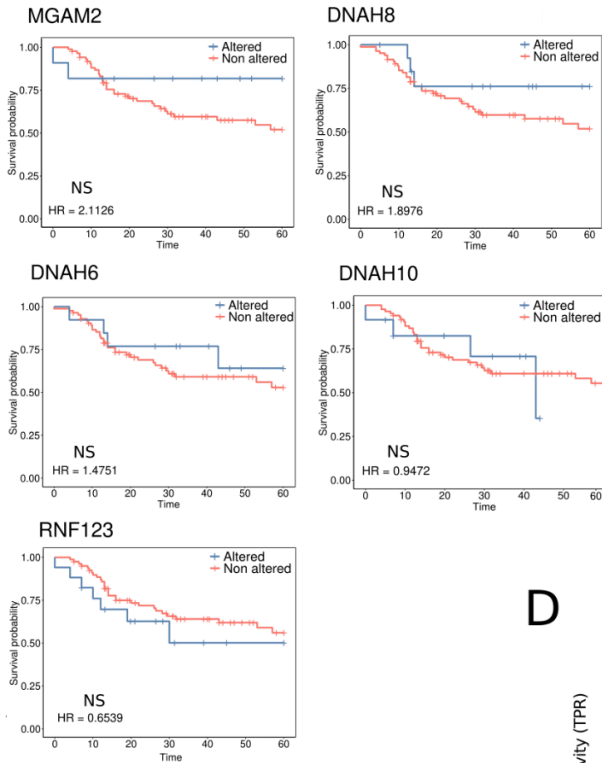


Supplementary Figure 3. OncoPrint of top 30 mutated genes in our MIBC cohort and significantly different mutated genes. A. Mutational landscape of top 30 mutated genes in our MIBC cohort with clinical and APOBEC information. B. Mutational landscape of genes which were significantly different mutated in our MIBC cohort (MGAM2, DNAH8, DNAH6, DNAH10, RNF213) with clinical and APOBEC information.

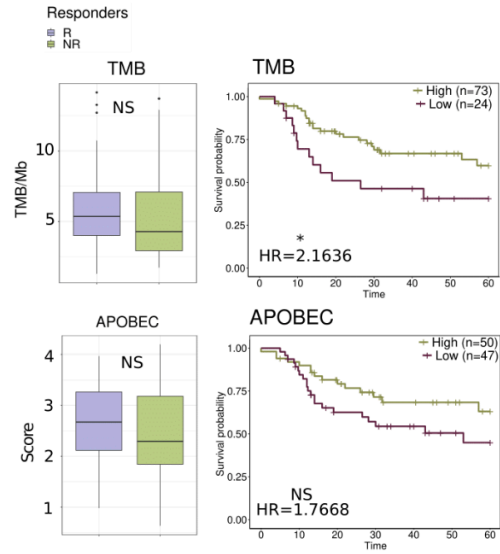


Supplementary Figure 4. Somatic mutations associated with R and its co-occurrence.
A. Statistically significant differentially mutated genes between R and NR (MGAM2 $p=0.0086$, DNAH8 $p=0.0086$, DNAH6 $p=0.0163$, DNAH10 $p=0.0301$, RNF213 $p=0.0349$)
C. Co-occurrence of significant differentially mutated genes between R and NR. Green represents positive odds ratio and brown represents negative odds ratio.

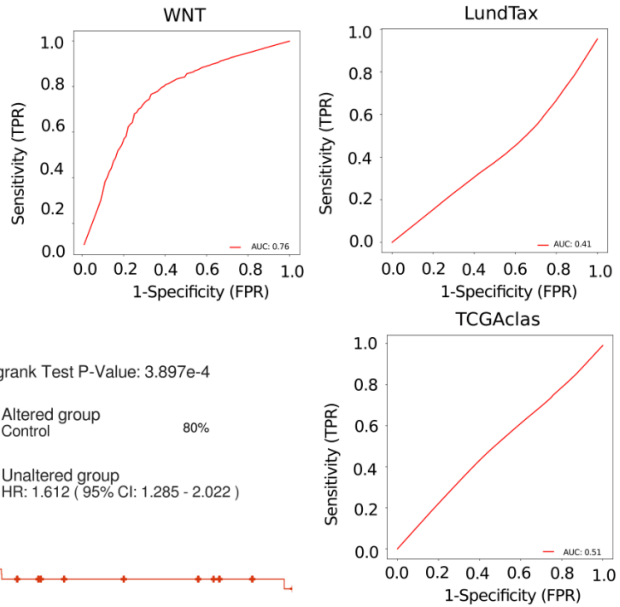
A



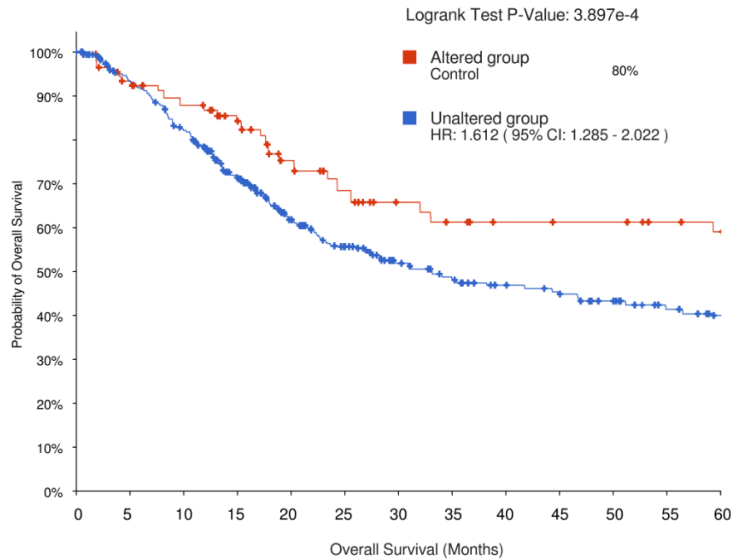
C



D



B



Number at risk (n)

Altered group	202	178	157	133	95	77	58	51	42	39	39	31	27
Unaltered group	914	810	703	530	379	303	242	211	187	175	153	125	106

Supplementary Figure 5. Kaplan Meier curves for significantly differentially mutated genes between R and NR, APOBEC and TMB association with response and ROC curves of WNT, LundTax and TCGAclas classifiers. **A.** Kaplan-Meier curves showing the association between mutations in statistically significant differentially mutated genes and 5-year overall survival (OS) ($p > 0.05$). **B.** Kaplan Meier curve of mutations in any of the DNAH genes family (DNAH8, DNAH6 and DNAH10) in cBioportal using several available bladder cancer datasets ($p = 3.897e-4$, HR=1.612, 95%CI=1.28-2.00). **C.** Association of tumor mutational burden (TMB) per Megabase (TMB/Mb) and APOBEC enrichment score with NAC response ($p > 0.05$) and 5-year OS (TMB $p = 0.0231$, HR=2.1636, 95%CI=1.09-4.28 ; APOBEC $p > 0.05$) **D.** ROC curves resulting from machine learning (ML) models using only WNT, LundTax and TCGAclas classification results (WNT AUC=0.76, LundTax AUC=0.41, TCGAclas=0.51).