

1 **Does COVID-19 Increase the Risk of Subsequent Kidney Diseases More Than Influenza? A**  
2 **Retrospective Cohort Study Using Real-World Data In the United States**

3 Yue Zhang, MPH<sup>1</sup>, Nasrollah Ghahramani, MD, MS<sup>1,2</sup>, Vernon M. Chinchilli, PhD<sup>1</sup>, Djibril M. Ba, PhD,  
4 MPH<sup>1</sup>

5 1. Department of Public Health Sciences, Penn State College of Medicine, Hershey, PA, USA

6 2. Department of Medicine, Penn State College of Medicine, Hershey, PA, USA

7

8 **To whom correspondence should be addressed:**

9 Djibril M. Ba, PhD, MPH

10 Assistant Professor

11 Department of Public Health Sciences

12 Penn State College of Medicine

13 90 Hope Drive, Hershey, PA 17033

14 E: [djibrilba@pennstatehealth.psu.edu](mailto:djibrilba@pennstatehealth.psu.edu)

15

16

17 Abstract Word Count: 376

18 Text word Count: 3075

19 Number of Tables: 3

20 Number of Figures: 5

21 Supplementary documents: 2 tables and 1 figure

22 References: 53

23

## 24 **Abstract**

25 Background: Although case reports and observational studies suggest Coronavirus disease 2019 (COVID-  
26 19) increases the risk of kidney diseases, definitive real-world evidence, especially in comparison with  
27 influenza, is lacking. Our study aims to assess the association between COVID-19 infections and  
28 subsequent kidney diseases, using influenza as a positive control and incorporating a negative control to  
29 establish clearer associations.

30 Methods: A large retrospective cohort study with strata matching was conducted using the MarketScan  
31 database with records from Jan. 2020 to Dec. 2021. We used the international classification of 10th  
32 revision (ICD-10) codes to identify individuals and build three cohorts, (1) COVID-19 group, with index  
33 dates as the diagnosis dates of COVID-19; (2) Influenza but no COVID-19 (positive control) group, with  
34 index dates as the diagnosis dates of Influenza; and (3) no COVID-19 / Influenza (negative control)  
35 group, with randomly assigned index dates between Jan. 2020 to Dec. 2021. The main outcomes were  
36 acute kidney injury (AKI), chronic kidney disease (CKD), and end-stage renal disease (ESRD). To  
37 evaluate the association between COVID-19 and the new onset of kidney diseases relative to both control  
38 groups, we employed multivariable stratified Cox proportional hazards regression analysis.

39 Results: The study included 939,241 individuals with COVID-19, 1,878,482 individuals in the negative  
40 control group, and 199,071 individuals with influenza. After adjusting for demographics, comorbidities,  
41 and medication histories, COVID-19 was significantly associated with increased risks of AKI (adjusted  
42 hazards ratio, aHR: 2.74, 2.61-2.87), CKD (aHR: 1.38, 1.32-1.45), and ESRD (aHR, 3.22; 95% CI, 2.67-  
43 3.88), while influenza was associated with a modestly increased risk of AKI (aHR: 1.24, 1.11-1.38) and  
44 had no impact on CKD (aHR: 1.03, 0.92-1.14), and ESRD (aHR, 0.84; 95% CI, 0.55-1.29). Time-specific  
45 analyses indicated that while the HR for AKI declined from 0-180 days to 0-540 days, the HR for CKD  
46 and ESRD remained stable, with COVID-19's risk surpassing influenza's risk throughout follow-up.  
47 Exploratory analysis also found significant impacts of COVID-19 on glomerular diseases (aHR 1.28, 95%  
48 CI 1.09-1.50).

49 Conclusion: In this large real-world study, COVID-19 infections were associated with a 2.3-fold risk of  
50 developing AKI, a 1.4-fold risk of CKD, and a 4.7-fold risk of ESRD compared to influenza. Greater  
51 attention needs to be paid to kidney diseases in individuals after contracting COVID-19 to prevent future  
52 adverse health outcomes.

53

54

55 Keywords: COVID-19; Influenza; Kidney Diseases; Real-world Evidence

56

## 57 **Introduction**

58 Coronavirus disease 2019 (COVID-19) has been reported to be associated with multiple short-term and  
59 long-term conditions following exposure<sup>1-6</sup>. Kidney diseases, including short-term conditions like acute  
60 kidney injury (AKI) and long-term conditions like chronic kidney disease (CKD) and glomerular  
61 diseases, have attracted significant research attention, particularly regarding the long-term and short-term  
62 effects of COVID-19<sup>7-9</sup>. In addition to studying the effects of COVID-19 compared to non-infected  
63 individuals, there is increasing interest in comparing the impact of COVID-19 to influenza, one of the  
64 most common viral respiratory illnesses in the US<sup>10</sup>. Studies showed that COVID-19 is associated with  
65 higher risks of mortality and several comorbidities, including cardiovascular diseases, mental health  
66 disorders, and neurologic diseases, compared to influenza<sup>11-13</sup>. Therefore, a better understanding of the  
67 effects of COVID-19, in comparison to influenza, on short-term and long-term kidney diseases is needed  
68 to provide more comprehensive information to the public.

69 Previous studies assessing the associations between COVID-19 and kidney diseases have primarily  
70 focused on specific populations, such as U.S. veterans or hospitalized patients, and often lacked  
71 comparisons with influenza<sup>7,14-16</sup>. To the best of our knowledge, there is currently no study that has  
72 investigated the association among COVID-19, positive controls (influenza only), and negative controls  
73 (neither COVID-19 nor influenza infections) and the risk of kidney diseases using a large real-world  
74 database. In our study, we included over 3 million individuals from national real-world datasets  
75 (MarketScan) in the United States. Additionally, we compared the effects of COVID-19 to both positive  
76 control group and negative control group regarding the risks of AKI, CKD, end-stage renal disease  
77 (ESRD), and glomerular diseases. We hypothesized that individuals with COVID-19 infections have  
78 higher risks of kidney diseases compared to both positive and negative control groups, in both the short  
79 term and long term.

## 80 **Methods**

### 81 **Data Source**

82 This retrospective cohort study utilized data from Merative™ MarketScan® Commercial Database  
83 (hereafter referred to as MarketScan), ranging from January 2019 to December 2021. MarketScan is one  
84 of the largest and most comprehensive longitudinal claims databases available for healthcare research,  
85 encompassing data on over 275 million unique de-identified patients<sup>17</sup>. This database includes health  
86 insurance claims across various types of care (e.g., inpatient, outpatient, pharmacy, and other claims), as  
87 well as enrollment data from large employers and health plans across all 50 U.S. states and the District of  
88 Columbia. The longitudinal tracking of detailed patient-level healthcare claims information provides  
89 comprehensive data, including demographic characteristics such as age, sex, diagnoses, procedures, and  
90 medications<sup>18</sup>.

91 The included individuals had continuous enrollment for one year prior to, and 90 days following, the  
92 index dates. Data from 2020 and 2021 were primarily used for analytical purposes, while one year before  
93 the index dates was utilized to define baseline covariates.

### 94 **Cohort Derivation and Assessment of Exposure**

95 Individuals with COVID-19, aged between 18 to 64 years, were identified from 1 January 2020 to 31  
96 December 2021, using the International Classification of Diseases, 10th Revision (ICD-10)  
97 (*Supplementary Table 1*). The date of the first COVID-19 diagnosis was defined as the individual's index  
98 date. Two control groups were also established: (1) Positive control group: This group consisted of  
99 individuals with influenza, identified using ICD-10 code (*Supplementary Table 1*), but no COVID-19  
100 diagnosis histories. The recorded first diagnosis dates served as the index dates; (2) Negative control  
101 group: This group included individuals without any history of COVID-19 or influenza diagnoses, and  
102 pseudo random index dates were assigned between 1 January 2020 and 31 December 2021.

103 After excluding individuals with a history of kidney diseases at the study baseline, the COVID-19 group  
104 and the negative control group were matched at a maximum ratio of 1:2 across 1,536 strata. These strata  
105 were defined by year of birth (ranging from 1956 to 2003), gender (male or female), region (northeast,  
106 north-central, south, and west), and index date periods. Matching by index date periods aimed to control  
107 for the effects of temporal variations in COVID-19<sup>19</sup>. The periods were defined based on the dominant  
108 SARS-CoV-2 variants as follows: (1) January to June 2020: only Alpha (B.1.1.7); (2) July to December  
109 2020: Alpha (B.1.1.7), Beta (B.1.351) and Gamma (P.1); (3) January to June 2021: Beta (B.1.351) and  
110 Delta (B.1.617.2); (4) July to December 2021: Delta (B.1.617.2)<sup>20</sup>.

111 Strata that did not achieve the exact 1:2 ratio between the COVID-19 group and the negative control  
112 group were excluded, resulting in 1,469 strata being included in the final analysis. Individuals with  
113 influenza were directly assigned to these existing 1,469 strata (*Figure 1*).

#### 114 **Assessment of Outcomes**

115 The new onset of kidney diseases was assessed during the follow-up period, defined as the time between  
116 kidney disease onset and the index date. The analysis was censored at the occurrence of death, kidney  
117 disease, or the end of the study (31 December 2021), whichever occurred first. Kidney diseases were  
118 identified using ICD-10 codes, with all kidney diseases and subgroups, including AKI, CKD, and ESRD  
119 (including dialysis and kidney transplant). Glomerular disease was also identified for the exploratory  
120 analysis (*Supplementary Table 1*).

#### 121 **Assessment of Potential Covariates**

122 Demographic data on age, sex, and US regional location were extracted directly from  
123 MarketScan datasets. Individuals' comorbidities were assessed by the Elixhauser Comorbidity  
124 Index within one year prior to the index dates, utilizing ICD-10 codes<sup>21,22</sup>. The six most  
125 prevalent conditions, which are potentially related to kidney disease, COVID-19, or influenza,  
126 include cardiovascular disease (CVD, including congestive heart failure, cardiac arrhythmia,

127 valvular disease, pulmonary circulation disorders, peripheral vascular disorders, and  
128 hypertension)<sup>23–25</sup>, diabetes<sup>26,27</sup>, obesity<sup>28,29</sup>, chronic pulmonary disease<sup>30,31</sup>, liver diseases<sup>32,33</sup>,  
129 and depression<sup>34,35</sup> (*Supplementary Table 1*). In addition, we examined the usage history of seven  
130 specific medications – angiotensin-converting enzyme inhibitors or angiotensin II receptor  
131 blockers (ACEI/ARBs), statins, diuretics, calcium channel blockers (CCB), nonsteroidal anti-  
132 inflammatory drugs (NSAIDs), proton pump inhibitors (PPIs), and beta-blockers – within the  
133 year preceding the index dates. These medications have been identified as potential risk factors  
134 for kidney disease<sup>7,16,36,37</sup>. Drinking and smoking histories within 1 year before the index dates  
135 were also assessed based on ICD-10 codes and current procedural terminology (CPT) codes  
136 (*Supplementary Table 1*).

### 137 **Statistical Analysis**

138 Age-adjusted demographic and clinical characteristics were summarized across the COVID-19 group,  
139 negative control group, and positive control group, with mean (SD) values for continuous variables, and  
140 number and percentage for categorical variables, which were presented after stratum matching. The  
141 incidence densities of AKI, CKD, and ESRD were then calculated per 1,000 person-years for the three  
142 groups. Additionally, cumulative incidence figures were presented to illustrate the trends of AKI, CKD,  
143 and ESRD incidence over the follow-up weeks across the three groups. Having confirmed no violations of  
144 the proportional hazards assumption (*Supplementary Figure 1*), we initially applied stratified Cox  
145 proportional hazards regression models, stratified by stratum-match ID, separately for overall kidney  
146 diseases and subgroups with CKD, AKI, and ESRD. Subsequently, multivariable stratified Cox  
147 proportional hazards regression models were performed, incorporating stratum-match ID, six  
148 comorbidities, seven drug use histories, drinking histories, and smoking histories. Given the reported  
149 complex combination effects between COVID-19 and each of diabetes<sup>38</sup>, CVD<sup>39</sup>, and chronic pulmonary

150 disease<sup>40</sup>, interaction effects were assessed separately using the  $-2 \times \log$  likelihood ratio while controlling  
151 for the baseline covariates.

152 We conducted several sensitivity analyses to test the robustness of our results and to address the  
153 possibility of residual confounding: (1) All individuals from the 1536 strata were included in the analysis  
154 to address concerns regarding the exclusion of individuals without an exact 1:2 matching ratio. (2)  
155 Individuals without CVD, chronic pulmonary disease, diabetes, obesity, liver diseases, or depression  
156 before index dates were included to address the concern of residual confounding introduced from  
157 comorbidities. (3) Individuals who did not use ACEI/ARBs, statins, diuretics, CCB, NSAIDs, PPI, and  
158 beta-blockers were included, to address potential residual confounding from medications. (4) Propensity  
159 score strata were constructed using a logistic regression model with the covariates from the full model to  
160 balance baseline data between the COVID-19 group and the negative control group. Stratified Cox  
161 proportional hazards regression models were then conducted using the propensity score strata ID. (5)  
162 Individuals with index dates from January to June 2020 were included to address concerns regarding the  
163 unbalanced distribution of individuals in the influenza group.

164 We conducted an exploratory analysis to assess the risk of COVID-19 and influenza on glomerular  
165 diseases. Individuals who previously had glomerular diseases before the index dates were excluded from  
166 the analysis, and the same multivariable stratified Cox proportional hazards regression models were  
167 applied as the primary analysis.

168 Another exploratory analysis was performed to compare the effects of COVID-19 and influenza on AKI  
169 and CKD over 180, 360, and 540 days to assess effect trends with follow-up days. The same  
170 multivariable stratified Cox proportional hazards regression models used in the primary analysis were  
171 applied to these situations. ESRD and glomerular diseases were not included due to the limited number of  
172 incident cases during each follow-up period.

173 The final exploratory analysis was conducted to directly compare the hazards between COVID-19 and  
174 influenza, using influenza as the reference.



175 Data were analyzed in SAS software version 9.4 (SAS Institute, Cary, North Carolina) and R software  
176 version 3.6.2 (R Foundation for Statistical Computing, Vienna, Austria) using a two-tailed  $\alpha$  level of 0.05.  
177 This study followed the Strengthening the Reporting of Observational Studies in Epidemiology  
178 (STROBE) reporting guideline for cohort studies<sup>41</sup>.

## 179 **Results**

180 Our study included a total of 3,016,794 individuals, with a median follow-up time of 324 days  
181 (interquartile range: 186 to 429 days), divided into three groups: the COVID-19 group (n = 939,241;  
182 mean [SD] age 41.3 [13.1] years; 47.3% male), the negative control group (n = 1,878,482; mean [SD] age  
183 41.3 [13.1] years; 47.3% male), and the influenza group (n = 199,071; mean [SD] age 39.7 [12.8] years;  
184 43.1% male). After stratum matching, the COVID-19 and negative control groups showed identical  
185 distributions of age, gender, region, and index year. The influenza group showed a similar distribution to  
186 the negative control group regarding demographic information, except for the index year, with 92.8% of  
187 cases occurring between January and June 2020. To address potential biases introduced by the  
188 inconsistent distribution of index years, we conducted sensitivity analyses. Overall, the COVID-19 and  
189 influenza groups demonstrated a higher prevalence of comorbidities and medication use than the negative  
190 control group (*Table 1*).

191 COVID-19 group showed the highest incidence density in AKI (8.93 cases per 1000 PY, 95% CI (8.73,  
192 9.14)), CKD (6.36 cases per 1000 PY, 95% CI (6.19, 6.54)), and ESRD (0.64 cases per 1000 PY, 95% CI  
193 (0.58, 0.69)), compared to negative control and influenza groups (*Figure 2*). In the cumulative incidence  
194 plots, COVID-19 group consistently exhibited the significantly highest cumulative incidence for AKI,  
195 CKD, and ESRD throughout the entire follow-up period. (*Figure 3*).

196 Stratified Cox proportional hazards regression models, adjusted for (1) match ID only and (2) match ID  
197 along with other baseline covariates, presented consistent results for the adjusted hazard ratios (aHR) for  
198 COVID-19 and influenza, using the negative control as the reference. Moreover, COVID-19 exhibited  
199 higher hazard ratios than influenza for both overall kidney diseases and subgroups of CKD, AKI, and  
200 ESRD. Specifically, after adjusting for baseline covariates, COVID-19 significantly increased risks of any  
201 kidney diseases (aHR, 1.93; 95% CI, 1.87 – 2.00), CKD (aHR, 1.38; 95% CI, 1.32 – 1.45), AKI (aHR,  
202 2.74; 95% CI, 2.61 – 2.87), and ESRD (aHR, 3.22; 95% CI, 2.67 – 3.88). In contrast, influenza  
203 significantly but slightly increased the risks of any kidney disease when compared to negative control

204 (aHR, 1.10; 95% CI, 1.01–1.19) and AKI (aHR, 1.24; 95% CI, 1.11–1.38), but had non-significant effects  
205 on incident CKD (aHR, 1.03; 95% CI, 0.92–1.14) and ESRD (aHR, 0.84; 95% CI, 0.55–1.29) (*Table 2*).

206 Interaction effects of COVID-19 with diabetes, CVD, and chronic pulmonary diseases were tested and  
207 none were statistically significant (all  $p > 0.05$ ) (*Supplementary Table 2*). The results of sensitivity  
208 analyses in five different scenarios are consistent with the conclusions drawn from our primary analysis  
209 (*Table 3*).

210 For the exploratory analysis of glomerular disease, compared to the negative control group, after adjusting  
211 for baseline covariates, COVID-19 was associated with increased risk of glomerular disease (aHR 1.28,  
212 95% CI 1.09–1.50), and influenza also elevated the risk (aHR 1.40, 95% CI 1.03–1.91).

213 In the exploratory analysis with follow-up periods, both COVID-19 and influenza showed significantly  
214 increased risks of AKI across 180, 360, and 540 days. However, COVID-19 (aHR, 4.35; 95% CI, 4.09–  
215 4.63) had nearly three times the hazard ratio of influenza (aHR, 1.51; 95% CI, 1.29–1.78) for AKI within  
216 the first 180 days after infection. The impact on AKI declined for both COVID-19 (aHR, 2.75; 95% CI,  
217 2.62–2.88) and influenza (aHR, 1.28; 95% CI, 1.14–1.44) by 540 days. Both COVID-19 and influenza  
218 showed relatively stable trends in their effects on CKD from 0–180 days to 0–540 days. However,  
219 COVID-19 showed significant impact on CKD across all three periods, while influenza remained non-  
220 significant (*Figure 4*).

221 Exploratory analysis for the effects of COVID-19 with influenza as the positive control group showed  
222 significantly increased risks of AKI (aHR 2.28, 95% CI 2.00–2.60), CKD (aHR 1.39, 95% CI 1.21–1.60),  
223 and ESRD (aHR 4.67, 95% CI 2.85–7.66), but a non-significant impact on glomerular diseases (aHR  
224 1.08, 95% CI 0.73–1.60) (*Figure 5*).

## 225 **Discussion**

226 In this large national retrospective cohort study of 3,016,794 individuals, we found that COVID-19 was  
227 associated with significantly higher risks of incident AKI, CKD, ESRD, and glomerular diseases,  
228 independent of baseline lifestyle factors and comorbidity conditions. In contrast, influenza was associated  
229 with a significant but mild effect on incident AKI and had no significant effects on CKD, ESRD, and  
230 glomerular diseases. Furthermore, COVID-19 had stronger effects on AKI within 180 days post-infection  
231 but demonstrated stable effects on CKD from 0-180 days to 0-540 days post-infection. Conversely,  
232 influenza had relatively stable mild effects on AKI after infection and showed no impact on CKD at any  
233 observed intervals. To our knowledge, our study is the first to comprehensively compare the associations  
234 of COVID-19 and influenza on AKI, CKD, and ESRD using large national real-world datasets. Moreover,  
235 this study is the first to explore the risk of COVID-19 on glomerular diseases based on real-world  
236 evidence.

237 Our findings are consistent with several previous studies. Bowe et al. conducted a retrospective cohort  
238 study using the Veterans Health Administration (VHA) healthcare system data to compare COVID-19  
239 individuals with non-infected individuals from March 1, 2020, to March 15, 2021 (median follow-up days  
240 with 172 days). They found that the COVID-19 group had significantly increased risks of AKI (aHR 1.94,  
241 95% CI 1.86 to 2.04) and ESRD (aHR 2.96, 95% CI 2.49 to 3.51)<sup>7</sup>. Similarly, our study reached the same  
242 conclusions but reported slightly higher aHR, likely due to the longer follow-up days in our study  
243 (median follow-up days with 324 days), and the different study population (91.2% of individuals in VHA  
244 are males). Xie et al. compared the risk of COVID-19 to influenza on 91 comorbidities in a retrospective  
245 cohort study using VHA data. They observed higher risks of AKI and CKD in the COVID-19 group  
246 compared to the influenza group<sup>12</sup>. Moreover, several prospective cohort studies with smaller sample  
247 sizes have observed increased risks of glomerular diseases (including proteinuria and hematuria)  
248 following COVID-19 infections, which are consistent with our exploratory results on glomerular  
249 diseases<sup>42,43</sup>.

250 Compared to influenza, COVID-19 has potential pathways leading to kidney diseases. First, Severe Acute  
251 Respiratory Syndrome Coronavirus-2 (SARS-CoV-2) enters kidney cells through specific  
252 biomechanisms. The virus binds to angiotensin-converting enzyme 2 (ACE2) via its spike (S) protein,  
253 which is then cleaved by the Type 2 transmembrane serine protease (TMPRSS2) or other proteases,  
254 forming a fusion pore<sup>44</sup>. Renal parenchymal cells, express high levels of ACE2, TMPRSS2, and other  
255 proteases, facilitating S protein cleavage and viral entry, making the kidneys susceptible to SARS-CoV-2  
256 infection<sup>9,45</sup>. Moreover, several studies have found SARS-CoV-2 RNA and protein in the kidneys of  
257 COVID-19 individuals, which indicates the kidney is a target for SARS-CoV-2<sup>46-48</sup>. In contrast, although  
258 some studies have identified pathways for influenza A virus entry into host cells and its potential  
259 replication in human kidney cells<sup>49</sup>, further evidence is still needed<sup>50</sup>. Secondly, current observational  
260 studies have reported higher risks of comorbidities such as CVD and metabolic diseases in COVID-19  
261 individuals compared to influenza<sup>12,13</sup>. These elevated comorbidity risks may also explain the increased  
262 incidence of kidney diseases in COVID-19 individuals compared to those with influenza<sup>9,51</sup>. Additionally,  
263 our study is the first to compare the effects of COVID-19 to influenza on glomerular diseases using large  
264 real-world data, providing evidence and valuable information for both mechanism and epidemiological  
265 research on glomerular diseases after COVID-19 infections.

266 Our study has multiple strengths. First, we employed comprehensive epidemiologic study designs to  
267 mitigate potential bias and confounding effects. We performed stratum matching to better balance the  
268 distribution of demographic characteristics and matched diagnosis dates to reduce bias from virus  
269 variants. Additionally, we included both positive and negative control groups to better evaluate the effects  
270 of COVID-19. In the negative control groups, we randomly assigned index dates for individuals,  
271 systematically excluding person-time before the random index dates, which may lead to a potential  
272 overestimation of the hazard ratio. By including influenza as a positive control group, with index dates  
273 corresponding to diagnosis dates, we avoided such overestimation when comparing COVID-19 directly  
274 with influenza.

275 This study also has some limitations. The MarketScan dataset is a claims dataset with insured individuals  
276 aged between 18 and 64 years. Our findings may not be generalized to elderly or pediatric populations,  
277 individuals without health insurance, and those covered by Medicare or Medicaid<sup>52</sup>. Additionally,  
278 MarketScan does not provide information on race or lab test results, preventing us from adjusting for  
279 potential unmeasured confounding by race and baseline creatinine levels. Additionally, although we  
280 included a large number of pre-defined covariates, such as diagnosed comorbidities and medications, and  
281 balanced these covariates between the COVID-19 groups and the control groups, we cannot completely  
282 rule out misclassification bias and residual confounding due to the nature of the observational study.  
283 Lastly, we acknowledge the potential information bias in the diagnosis of kidney diseases, particularly  
284 mild CKD. The incidence of kidney diseases may be underestimated due to limited access to healthcare  
285 services, affecting both the COVID-19 and control groups, as restricted healthcare access can result in  
286 undiagnosed cases<sup>53</sup>.

287

## 288 **Conclusions**

289 In our large national retrospective cohort study, COVID-19 was associated with a 1.28 times higher risk  
290 in AKI, 0.39 times higher risk in CKD, and 3.67 times higher risk in ESRD, compared to influenza.  
291 COVID-19 has a stronger effect on AKI in the short term but may have stable long-term effects on CKD.  
292 Greater attention should be given to kidney disease in individuals with COVID-19 infections.

293 **Statements**

294 **Acknowledgments:** None

295 **Funding statement:** This project is supported by Artificial Intelligence and Biomedical Informatics Pilot  
296 Funding, Penn State College of Medicine.

297 **Competing interests statement:** The authors have no conflicts of interest to disclose.

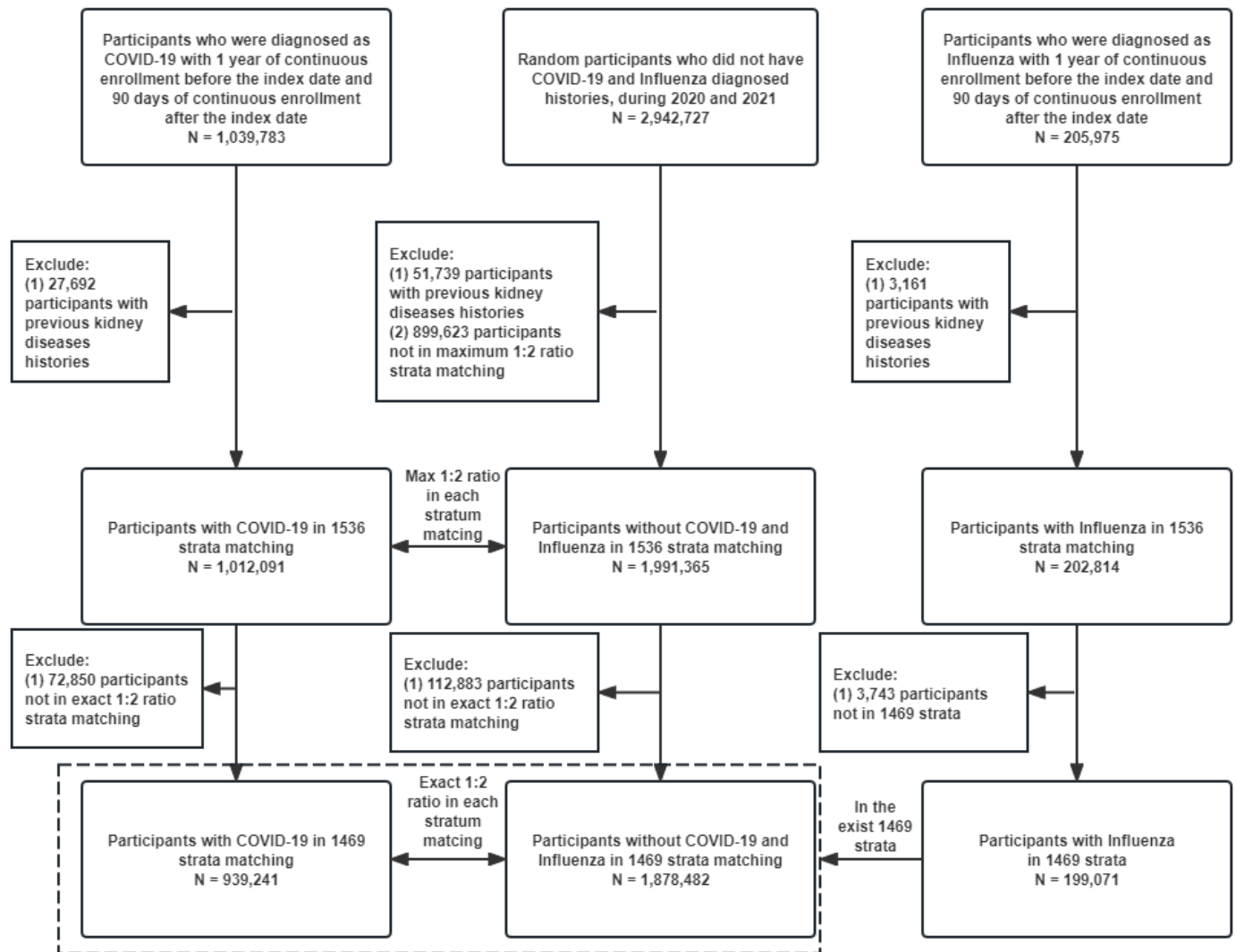
298 **Ethics approval statement:** The protocol of this study was reviewed and received a determination of  
299 non-human subjects' research by the Penn State Institutional Review Board. The individual informed  
300 consent requirement was waived for this secondary analysis of de-identified data.

301 **Authors' contributions:** Designed research (project conception, development of overall research plan):  
302 YZ, DMB, NG, and VMC. Data extraction and study oversight: YZ, DMB. Analyzed data: YZ, and  
303 DMB. Performed statistical analysis: YZ. Wrote the first draft of the manuscript: YZ. Review and editing:  
304 YZ, NG, VMC, and DMB. All authors have read and approved the final manuscript. This study is part of  
305 the YZ's doctoral dissertation research project with the Penn State College of Medicine, United States of  
306 America.

307 **Data sharing statement:** Data are available from third-party partners Merative™ MarketScan®

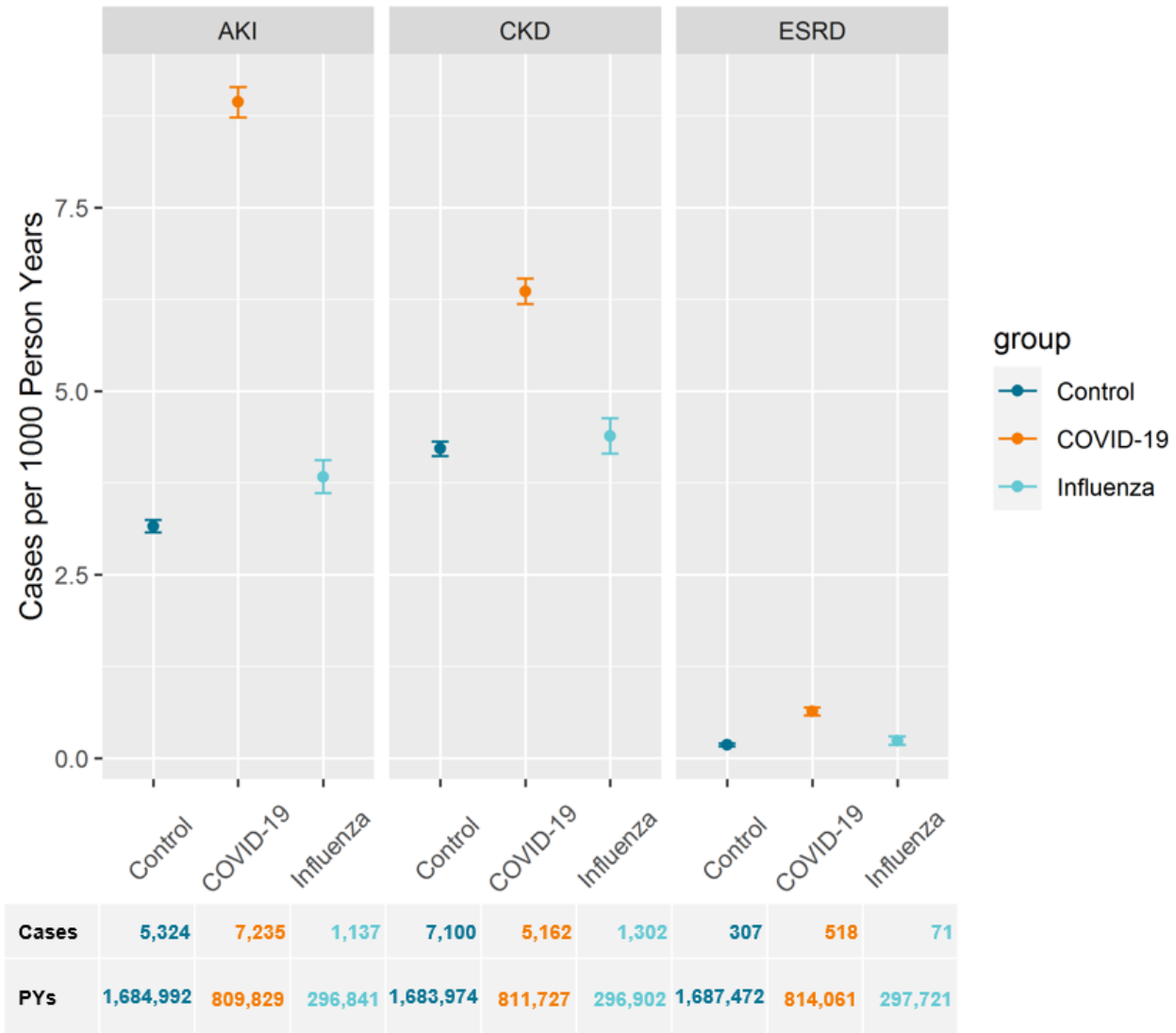
308 Commercial Database

309



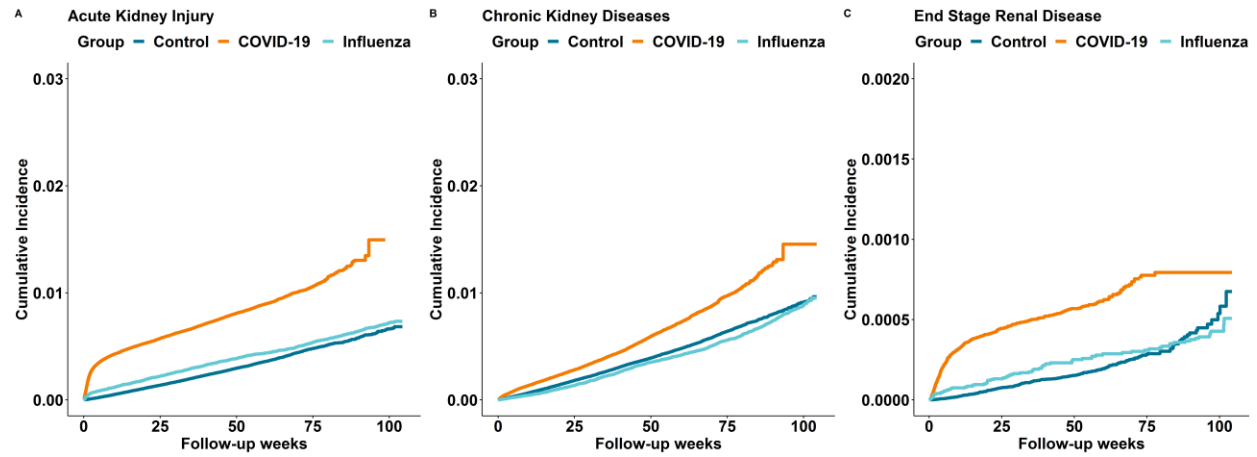
310 **Figure 1: Participant Selection Flow Diagram for COVID-19, Positive Control, and Negative Control**  
 311 **Groups from the MarketScan Dataset**





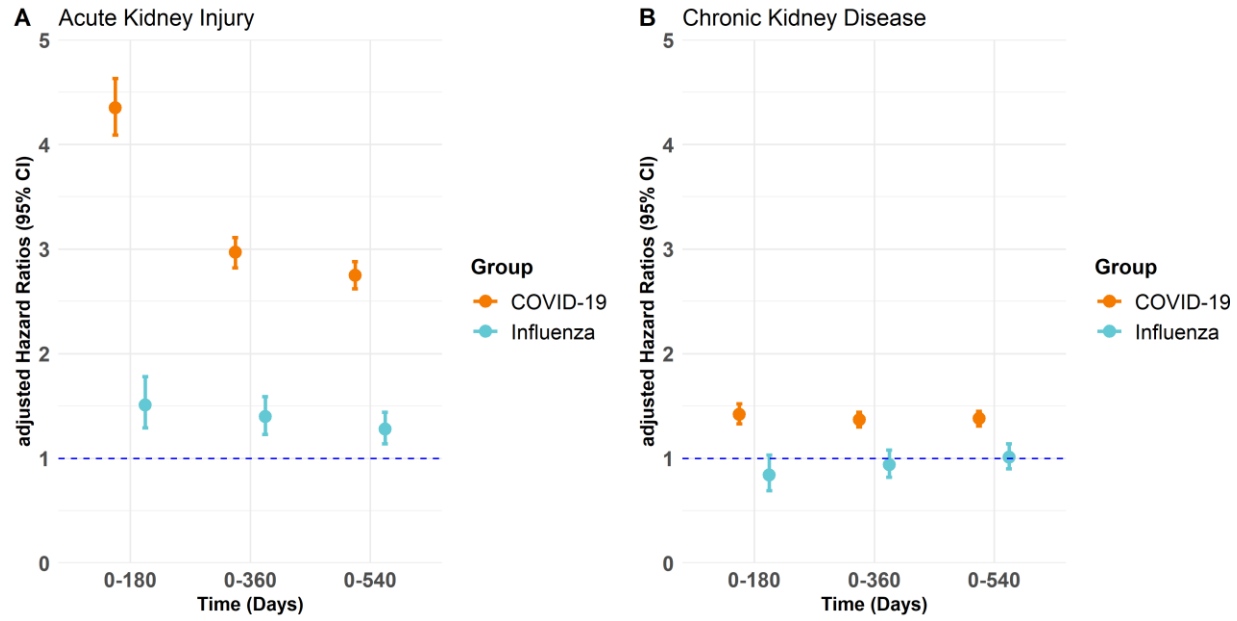
312

313 **Figure 2: Incidence density of (1) Acute Kidney Injury (2) Chronic Kidney Disease (3) End Stage**  
 314 **Renal Diseases across COVID-19, Influenza, and Negative Control groups (per 1000 person-years)**



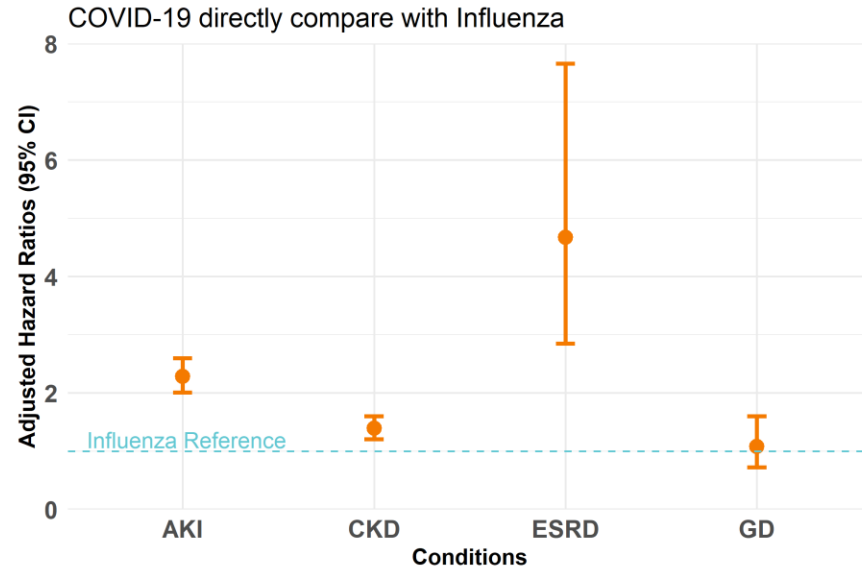
315

316 **Figure 3: Cumulative Incidence of (1) Acute Kidney Injury (2) Chronic Kidney Disease (3) End Stage**  
317 **Renal Diseases across COVID-19, Influenza, and Negative Control groups**



318

319 **Figure 4: Exploratory Analysis of Chronic Kidney Disease and Acute Kidney Injury Risks Associated**  
320 **with COVID-19 and Influenza Compared to Negative Control Across Three Time Intervals: 0–180,**  
321 **0–360, and 0–540 Days (Hazard Ratios, 95% Confidence Interval).**



322

323 **Figure 5: Exploratory Analysis of COVID-19 Impacts on Kidney Diseases Using Influenza as the**  
324 **Reference Group (Adjusted Hazard Ratios, 95% Confidence Interval)**

Table 1 Age-adjusted demographic and clinical characteristics stratified by COVID-19 and Influenza status after stratum matching

	COVID-19 (N= 939,241)	Negative Control (N=1,878,482)	Influenza (Positive Control) (N= 199,071)
Age*, mean (SD)	41.3 (13.1)	41.3 (13.1)	39.7 (12.8)
Gender			
Male	443,991 (47.3%)	887,983 (47.3%)	85,874 (43.1%)
Region			
Northeast	150,159 (16.0%)	300,319 (16.0%)	38,352 (19.3%)
North Central	185,136 (19.7%)	370,272 (19.7%)	35,684 (17.9%)
South	485,969 (51.7%)	971,938 (51.7%)	106,190 (53.3%)
West	117,977 (12.6%)	235,954 (12.6%)	18,845 (9.5%)
Index Year			
Jan. - June 2020	88,924 (9.5%)	177,847 (9.5%)	184,764 (92.8%)
July - Dec. 2020	367,195 (39.1%)	734,390 (39.1%)	5,977 (3.0%)
Jan. - June 2021	303,434 (32.3%)	606,867 (32.3%)	6,134 (3.1%)
July - Dec. 2021	179,689 (19.1%)	359,377 (19.1%)	2,196 (1.1%)
Comorbidities			
Cardiovascular Disease, Yes (%)	247,914 (26.4%)	395,381 (21.0%)	49,401 (24.8%)
Chronic Pulmonary Disease, Yes (%)	75,568 (8.0%)	105,710 (5.6%)	20,351 (10.2%)
Diabetes, Yes (%)	90,520 (9.6%)	125,514 (6.7%)	16,067 (8.1%)
Obesity, Yes (%)	134,615 (14.3%)	189,611 (10.1%)	26,266 (13.2%)
Liver disease, Yes (%)	27,509 (2.9%)	38,772 (2.1%)	5,498 (2.8%)
Depression, Yes (%)	112,614 (12.0%)	193,466 (10.3%)	26,197 (13.2%)
Smoking, Yes (%)	48,003 (5.1%)	86,104 (4.6%)	13,531 (6.8%)
Drinking, Yes (%)	9,418 (1.0%)	17,083 (0.9%)	2,119 (1.1%)
Medications			
ACEI/ARBs, Yes (%)	143,810 (15.3%)	251,743 (13.4%)	27,256 (13.7%)
Beta-blockers, Yes (%)	39,876 (4.2%)	70,416 (3.7%)	8,059 (4.0%)
CCB, Yes (%)	62,494 (6.7%)	108,784 (5.8%)	11,815 (5.9%)
Diuretics, Yes (%)	102,904 (11.0%)	173,600 (9.2%)	19,974 (10.0%)
NSAID, Yes (%)	153,588 (16.4%)	238,015 (12.7%)	34,283 (17.2%)
PPIs, Yes (%)	98,615 (10.5%)	142,827 (7.6%)	20,572 (10.3%)
Statins, Yes (%)	123,213 (13.1%)	227,654 (12.1%)	23,673 (11.9%)

\* Value is not age-adjusted; Binary and Categorical variables are standardized to the age distribution of the study population;

Values of Categorical variables may not sum to 100% due to rounding.

Abbreviation:

ACEI/ARBs: angiotensin-converting enzyme inhibitors or angiotensin II receptor blockers

CCB: calcium channel blockers

NSAID: nonsteroidal anti-inflammatory drugs

PPIs: proton pump inhibitors

Table 2. Stratified Cox proportional hazards models HR (95% CI) for the association between COVID, Influenza, and kidney diseases

Models	Diseases	Negative Control	COVID-19	Influenza
Model 1	Any Kidney Diseases	Reference	2.08 (2.02, 2.13)	1.17 (1.10, 1.24)
	Chronic Kidney Disease	Reference	1.54 (1.48, 1.60)	1.09 (1.01, 1.17)
	Acute Kidney Injury	Reference	2.87 (2.77, 2.97)	1.30 (1.20, 1.40)
	End Stage Renal Disease	Reference	3.66 (3.18, 4.23)	0.99 (0.73, 1.33)
Model 2	Any Kidney Diseases	Reference	1.93 (1.87, 2.00)	1.10 (1.01, 1.19)
	Chronic Kidney Disease	Reference	1.38 (1.32, 1.45)	1.03 (0.92, 1.14)
	Acute Kidney Injury	Reference	2.74 (2.61, 2.87)	1.24 (1.11, 1.38)
	End Stage Renal Disease	Reference	3.22 (2.67, 3.88)	0.84 (0.55, 1.29)

Model 1: Stratified with match ID

Model 2: Stratified with match ID, 6 comorbidities (cardiovascular disease, chronic pulmonary disease, diabetes, obesity, liver diseases, depression), 7 drug use histories (angiotensin-converting enzyme inhibitors or angiotensin II receptor blockers (ACEI/ARBs), statins, diuretics, calcium channel blockers (CCB), nonsteroidal anti-inflammatory drugs (NSAIDs), proton pump inhibitors (PPIs), and beta-blockers), drink histories, and smoking histories.

Table 3. Sensitivity analysis for the association between COVID, Influenza, and kidney diseases: (1) all strata (2) exclude individuals who had any comorbidities (3) exclude individuals who had any medications (4) stratified with propensity score strata (5) only include individuals who were diagnosed during Jan. to June 2020.

Models	Diseases	Negative Control	COVID-19	Influenza
Situation 1*	Any kidney diseases	Reference	1.95 (1.88, 2.01)	1.11 (1.02, 1.20)
	Chronic Kidney Disease	Reference	1.38 (1.32, 1.45)	1.03 (0.92, 1.14)
	Acute Kidney Injury	Reference	2.74 (2.62, 2.87)	1.24 (1.11, 1.38)
	End Stage Renal Disease	Reference	3.23 (2.68, 3.88)	0.84 (0.55, 1.30)
Situation 2†	Any kidney diseases	Reference	2.19 (2.08, 2.31)	1.14 (1.01, 1.29)
	Chronic Kidney Disease	Reference	1.51 (1.40, 1.63)	1.04 (0.88, 1.23)
	Acute Kidney Injury	Reference	2.93 (2.74, 3.14)	1.22 (1.04, 1.43)
	End Stage Renal Disease	Reference	3.13 (2.42, 4.04)	0.77 (0.41, 1.45)
Situation 3‡	Any kidney diseases	Reference	2.13 (2.02, 2.24)	1.18 (1.05, 1.31)
	Chronic Kidney Disease	Reference	1.53 (1.42, 1.64)	1.07 (0.92, 1.24)
	Acute Kidney Injury	Reference	2.79 (2.61, 2.98)	1.29 (1.11, 1.49)
	End Stage Renal Disease	Reference	3.07 (2.42, 3.90)	0.62 (0.36, 1.08)
Situation 4§	Any kidney diseases	Reference	1.81 (1.76, 1.86)	1.13 (1.06, 1.21)
	Chronic Kidney Disease	Reference	1.35 (1.30, 1.40)	1.05 (0.97, 1.14)
	Acute Kidney Injury	Reference	2.50 (2.41, 2.59)	1.32 (1.20, 1.44)
	End Stage Renal Disease	Reference	3.22 (2.78, 3.71)	1.06 (0.75, 1.50)
Situation 5**	Any kidney diseases	Reference	2.28 (2.07, 2.51)	1.11 (1.01, 1.22)
	Chronic Kidney Disease	Reference	1.54 (1.35, 1.76)	1.02 (0.91, 1.15)
	Acute Kidney Injury	Reference	3.51 (3.09, 4.00)	1.30 (1.14, 1.48)
	End Stage Renal Disease	Reference	4.73 (3.06, 7.32)	1.05 (0.63, 1.74)

\*Situation 1, with 1536 strata and a total of 3,206,270 individuals. Models stratified with match ID, 6 comorbidities (cardiovascular disease, chronic pulmonary disease, diabetes, obesity, liver diseases, depression), 7 drug use histories (angiotensin-converting enzyme inhibitors or angiotensin II receptor blockers (ACEI/ARBs), statins, diuretics, calcium channel blockers (CCB), nonsteroidal anti-inflammatory drugs (NSAIDs), proton pump inhibitors (PPIs), and beta-blockers), proton pump inhibitors (PPIs), insulin, beta-blockers, and other hypertension drugs), drink histories, and smoking histories.

†Situation 2, 1,802,333 individuals who did not have cardiovascular disease, chronic pulmonary disease, diabetes, obesity, liver diseases, or depression before index dates. Models stratified with match ID, 7 drug use histories, drink histories, and smoking histories.

---

‡Situation 3, 1,886,101 individuals who did not have any medication histories of angiotensin-converting enzyme inhibitors or angiotensin II receptor blockers (ACEI/ARBs), statins, diuretics, calcium channel blockers (CCB), nonsteroidal anti-inflammatory drugs (NSAIDs), proton pump inhibitors (PPIs), and beta-blockers. Models stratified with match ID, 6 comorbidities, drinking and smoking histories.

§Situation 4, a total of 20 built propensity score strata were built based on age, gender, region, year of index date, 6 comorbidities, 7 drug use histories, drink histories, and smoking histories. Models were stratified with propensity score strata number.

\*\*Situation 5, individuals with index year on Jan. - June 2020, including 88,756 individuals in the COVID-19 group, 177,512 individuals in the negative control group, and 185,932 individuals in the Influenza group. Models stratified with stratum, 6 comorbidities, 7 drug use histories, drink histories, and smoking histories.



## References

1. Al-Aly Z, Xie Y, Bowe B. High-dimensional characterization of post-acute sequelae of COVID-19. *Nature*. 2021;594(7862):259-264. doi:10.1038/s41586-021-03553-9
2. Bowe B, Xie Y, Al-Aly Z. Acute and postacute sequelae associated with SARS-CoV-2 reinfection. *Nat Med*. 2022;28(11):2398-2405. doi:10.1038/s41591-022-02051-3
3. Bowe B, Xie Y, Al-Aly Z. Postacute sequelae of COVID-19 at 2 years. *Nat Med*. 2023;29(9):2347-2357. doi:10.1038/s41591-023-02521-2
4. Cai M, Xie Y, Topol EJ, Al-Aly Z. Three-year outcomes of post-acute sequelae of COVID-19. *Nat Med*. Published online May 30, 2024:1-10. doi:10.1038/s41591-024-02987-8
5. Huang L, Li X, Gu X, et al. Health outcomes in people 2 years after surviving hospitalisation with COVID-19: a longitudinal cohort study. *Lancet Respir Med*. 2022;10(9):863-876. doi:10.1016/S2213-2600(22)00126-6
6. Davis HE, McCorkell L, Vogel JM, Topol EJ. Long COVID: major findings, mechanisms and recommendations. *Nat Rev Microbiol*. Published online January 13, 2023. doi:10.1038/s41579-022-00846-2
7. Bowe B, Xie Y, Xu E, Al-Aly Z. Kidney Outcomes in Long COVID. *J Am Soc Nephrol*. 2021;32(11):2851-2862. doi:10.1681/ASN.2021060734
8. Tan BWL, Tan BWQ, Tan ALM, et al. Long-term kidney function recovery and mortality after COVID-19-associated acute kidney injury: an international multi-centre observational cohort study. *eClinicalMedicine*. 2023;55. doi:10.1016/j.eclinm.2022.101724
9. Brogan M, Ross MJ. COVID-19 and Kidney Disease. *Annu Rev Med*. 2023;74:1-13. doi:10.1146/annurev-med-042420-104753
10. CDC. Key Facts About Influenza (Flu). Centers for Disease Control and Prevention. Published March 22, 2024. Accessed June 24, 2024. <https://www.cdc.gov/flu/about/keyfacts.htm>
11. Xie Y, Choi T, Al-Aly Z. Risk of Death in Patients Hospitalized for COVID-19 vs Seasonal Influenza in Fall-Winter 2022-2023. *JAMA*. 2023;329(19):1697-1699. doi:10.1001/jama.2023.5348
12. Xie Y, Choi T, Al-Aly Z. Long-term outcomes following hospital admission for COVID-19 versus seasonal influenza: a cohort study. *Lancet Infect Dis*. 2024;24(3):239-255. doi:10.1016/S1473-3099(23)00684-9
13. BAI Y, TAO X. Comparison of COVID-19 and influenza characteristics. *J Zhejiang Univ Sci B*. 2021;22(2):87-98. doi:10.1631/jzus.B2000479
14. Moledina DG, Simonov M, Yamamoto Y, et al. The Association of COVID-19 With Acute Kidney Injury Independent of Severity of Illness: A Multicenter Cohort Study. *Am J Kidney Dis*. 2021;77(4):490-499.e1. doi:10.1053/j.ajkd.2020.12.007

15. Chan L, Chaudhary K, Saha A, et al. AKI in Hospitalized Patients with COVID-19. *J Am Soc Nephrol JASN*. 2021;32(1):151-160. doi:10.1681/ASN.2020050615
16. Zhang Y, Ba DM, Risher K, et al. Effects of ACE inhibitor/ARB therapy and Long COVID on kidney disease: a retrospective cohort study using real-world data. *Clin Kidney J*. Published online June 8, 2024:sfae164. doi:10.1093/ckj/sfae164
17. Merative MarketScan Research Databases. Accessed May 27, 2024. <https://www.merative.com/documents/brief/marketscan-explainer-general>
18. Adamson D, Chang S, Hansen LG. Health research data for the real world: The MarketScan databases. *Thomson Healthc*. Published online January 1, 2008:1-32.
19. Yang YT, Wong D, Ashcroft DM, et al. Repeated antibiotic exposure and risk of hospitalisation and death following COVID-19 infection (OpenSAFELY): a matched case-control study. *eClinicalMedicine*. 2023;61. doi:10.1016/j.eclinm.2023.102064
20. CDC. CDC Museum COVID-19 Timeline. Centers for Disease Control and Prevention. Published March 15, 2023. Accessed June 24, 2024. <https://www.cdc.gov/museum/timeline/covid19.html>
21. Elixhauser A, Steiner C, Harris DR, Coffey RM. Comorbidity measures for use with administrative data. *Med Care*. 1998;36(1):8-27. doi:10.1097/00005650-199801000-00004
22. Garland A, Olafson K, Ramsey CD, Yogendran M, Fransoo R. Epidemiology of critically ill patients in intensive care units: a population-based observational study. *Crit Care*. 2013;17(5):R212. doi:10.1186/cc13026
23. House AA, Wanner C, Sarnak MJ, et al. Heart failure in chronic kidney disease: conclusions from a Kidney Disease: Improving Global Outcomes (KDIGO) Controversies Conference. *Kidney Int*. 2019;95(6):1304-1317. doi:10.1016/j.kint.2019.02.022
24. Xie Y, Xu E, Bowe B, Al-Aly Z. Long-term cardiovascular outcomes of COVID-19. *Nat Med*. 2022;28(3):583-590. doi:10.1038/s41591-022-01689-3
25. Kwong Jeffrey C., Schwartz Kevin L., Campitelli Michael A., et al. Acute Myocardial Infarction after Laboratory-Confirmed Influenza Infection. *N Engl J Med*. 2018;378(4):345-353. doi:10.1056/NEJMoa1702090
26. Thomas MC, Brownlee M, Susztak K, et al. Diabetic kidney disease. *Nat Rev Dis Primer*. 2015;1(1):1-20. doi:10.1038/nrdp.2015.18
27. Ssentongo P, Zhang Y, Witmer L, Chinchilli VM, Ba DM. Association of COVID-19 with diabetes: a systematic review and meta-analysis. *Sci Rep*. 2022;12(1):20191. doi:10.1038/s41598-022-24185-7
28. Câmara NOS, Iseki K, Kramer H, Liu ZH, Sharma K. Kidney disease and obesity: epidemiology, mechanisms and treatment. *Nat Rev Nephrol*. 2017;13(3):181-190. doi:10.1038/nrneph.2016.191
29. Nour TY, ALTINTAŞ KH. Effect of the COVID-19 pandemic on obesity and its risk factors: a systematic review. *BMC Public Health*. 2023;23(1):1018. doi:10.1186/s12889-023-15833-2

30. Chen CY, Liao KM. Chronic Obstructive Pulmonary Disease is associated with risk of Chronic Kidney Disease: A Nationwide Case-Cohort Study. *Sci Rep*. 2016;6(1):25855. doi:10.1038/srep25855
31. Leung JM, Niikura M, Yang CWT, Sin DD. COVID-19 and COPD. *Eur Respir J*. 2020;56(2). doi:10.1183/13993003.02108-2020
32. Wang TY, Wang RF, Bu ZY, et al. Association of metabolic dysfunction-associated fatty liver disease with kidney disease. *Nat Rev Nephrol*. 2022;18(4):259-268. doi:10.1038/s41581-021-00519-y
33. Marjot T, Webb GJ, Barritt AS, et al. COVID-19 and liver disease: mechanistic and clinical perspectives. *Nat Rev Gastroenterol Hepatol*. 2021;18(5):348-364. doi:10.1038/s41575-021-00426-4
34. Zhang Y, Chinchilli VM, Ssentongo P, Ba DM. Association of Long COVID with mental health disorders: a retrospective cohort study using real-world data from the USA. *BMJ Open*. 2024;14(2):e079267. doi:10.1136/bmjopen-2023-079267
35. Shirazian S, Grant CD, Aina O, Mattana J, Khorassani F, Ricardo AC. Depression in Chronic Kidney Disease and End-Stage Renal Disease: Similarities and Differences in Diagnosis, Epidemiology, and Management. *Kidney Int Rep*. 2016;2(1):94-107. doi:10.1016/j.ekir.2016.09.005
36. Brar S, Liu KD, Go AS, et al. Prospective Cohort Study of Renin-Angiotensin System Blocker Usage after Hospitalized Acute Kidney Injury. *Clin J Am Soc Nephrol*. 2021;16(1):26-36. doi:10.2215/CJN.10840720
37. Zhang Y, Ghahramani N, Razjouyan H, Ba DM, Chinchilli VM. The association between proton pump inhibitor use and risk of post-hospitalization acute kidney injury: a multicenter prospective matched cohort study. *BMC Nephrol*. 2023;24(1):150. doi:10.1186/s12882-023-03211-4
38. Lim S, Bae JH, Kwon HS, Nauck MA. COVID-19 and diabetes mellitus: from pathophysiology to clinical management. *Nat Rev Endocrinol*. 2021;17(1):11-30. doi:10.1038/s41574-020-00435-4
39. Nishiga M, Wang DW, Han Y, Lewis DB, Wu JC. COVID-19 and cardiovascular disease: from basic mechanisms to clinical perspectives. *Nat Rev Cardiol*. 2020;17(9):543-558. doi:10.1038/s41569-020-0413-9
40. Awatade NT, Wark PAB, Chan ASL, et al. The Complex Association between COPD and COVID-19. *J Clin Med*. 2023;12(11):3791. doi:10.3390/jcm12113791
41. Elm E von, Altman DG, Egger M, Pocock SJ, Gøtzsche PC, Vandenbroucke JP. Strengthening the reporting of observational studies in epidemiology (STROBE) statement: guidelines for reporting observational studies. *BMJ*. 2007;335(7624):806-808. doi:10.1136/bmj.39335.541782.AD
42. Cheng Y, Luo R, Wang K, et al. Kidney disease is associated with in-hospital death of patients with COVID-19. *Kidney Int*. 2020;97(5):829-838. doi:10.1016/j.kint.2020.03.005
43. Pei G, Zhang Z, Peng J, et al. Renal Involvement and Early Prognosis in Patients with COVID-19 Pneumonia. *J Am Soc Nephrol*. 2020;31(6):1157. doi:10.1681/ASN.2020030276

44. Jackson CB, Farzan M, Chen B, Choe H. Mechanisms of SARS-CoV-2 entry into cells. *Nat Rev Mol Cell Biol.* 2022;23(1):3-20. doi:10.1038/s41580-021-00418-x
45. Khan S, Chen L, Yang CR, Raghuram V, Khundmiri SJ, Knepper MA. Does SARS-CoV-2 Infect the Kidney? *J Am Soc Nephrol JASN.* 2020;31(12):2746-2748. doi:10.1681/ASN.2020081229
46. Diao B, Wang C, Wang R, et al. Human kidney is a target for novel severe acute respiratory syndrome coronavirus 2 infection. *Nat Commun.* 2021;12(1):2506. doi:10.1038/s41467-021-22781-1
47. Puelles VG, Lütgehetmann M, Lindenmeyer MT, et al. Multiorgan and Renal Tropism of SARS-CoV-2. *N Engl J Med.* 2020;383(6):590-592. doi:10.1056/NEJMc2011400
48. Braun F, Lütgehetmann M, Pfefferle S, et al. SARS-CoV-2 renal tropism associates with acute kidney injury. *Lancet Lond Engl.* 2020;396(10251):597-598. doi:10.1016/S0140-6736(20)31759-1
49. Koch B, Shehata M, Müller-Ruttloff C, et al. Influenza A virus replicates productively in primary human kidney cells and induces factors and mechanisms related to regulated cell death and renal pathology observed in virus-infected patients. *Front Cell Infect Microbiol.* 2024;14. doi:10.3389/fcimb.2024.1363407
50. Sempere Borau M, Stertz S. Entry of influenza A virus into host cells — recent progress and remaining challenges. *Curr Opin Virol.* 2021;48:23-29. doi:10.1016/j.coviro.2021.03.001
51. Al-Aly Z, Agarwal A, Alwan N, Luyckx VA. Long COVID: long-term health outcomes and implications for policy and research. *Nat Rev Nephrol.* 2023;19(1):1-2. doi:10.1038/s41581-022-00652-2
52. Butler AM, Nickel KB, Overman RA, Brookhart MA. IBM MarketScan Research Databases. In: Sturkenboom M, Schink T, eds. *Databases for Pharmacoepidemiological Research.* Springer International Publishing; 2021:243-251. doi:10.1007/978-3-030-51455-6\_20
53. Pujolar G, Oliver-Anglès A, Vargas I, Vázquez ML. Changes in Access to Health Services during the COVID-19 Pandemic: A Scoping Review. *Int J Environ Res Public Health.* 2022;19(3):1749. doi:10.3390/ijerph19031749