

1 **SUPPLEMENTARY MATERIALS**

2 **Title**

3 Type I interferon responses contribute to immune protection against mycobacterial infection

4 **Authors**

5 Andrea Szydło-Shein¹, Blanca Sanz-Magallón Duque de Estrada¹, Joshua Rosenheim¹, Carolin T.
6 Turner¹, Evdokia Tsaliki¹, Marc C. I. Lipman^{2,3}, Heinke Kunst^{4,5}, Gabriele Pollara¹, Philip M. Elks⁶,
7 Jean-Pierre Levrard⁷, Elspeth M. Payne⁸, Mahdad Noursadeghi¹, Gillian S. Tomlinson^{1*}

8 **Affiliations**

9 ¹Division of Infection and Immunity, University College London, London, UK

10 ²Respiratory Medicine, Royal Free London NHS Foundation Trust, London, UK

11 ³UCL Respiratory, University College London, London, UK

12 ⁴Barts Health NHS Trust, London, UK

13 ⁵Blizard Institute, Queen Mary University of London, London, UK

14 ⁶The Bateson Centre, School of Medicine and Population Health, The University of Sheffield,
15 Sheffield, UK

16 ⁷Université Paris-Saclay, CNRS UMR9197, Institut Pasteur, Université Paris-Cité, Institut des
17 Neurosciences Paris-Saclay, 91400 Saclay, France

18 ⁸Research Department of Haematology, Cancer Institute, University College London, London, UK

19 *Corresponding author

20 **Corresponding author**

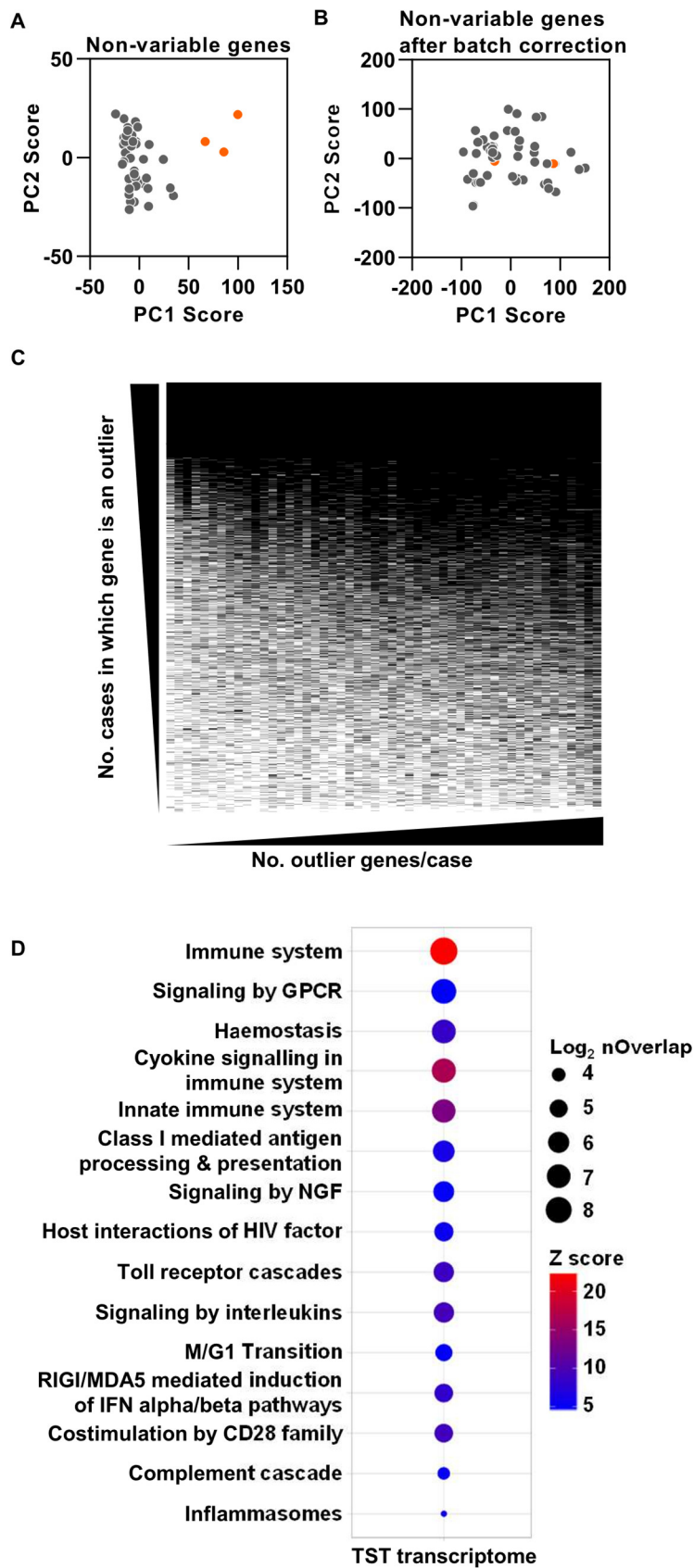
21 Gillian S. Tomlinson, Email: g.tomlinson@ucl.ac.uk

22

23 **LIST OF SUPPLEMENTARY MATERIALS**

- 24 Fig. S1. Batch correction, interindividual variation and pathway enrichment analysis of tuberculin skin
25 test (TST) transcriptomic data from people with active tuberculosis (TB).
- 26 Fig. S2. Identification of upstream regulator target gene modules.
- 27 Fig. S3. Relationship between the entire TST transcriptomic signature and interferon gamma
28 inducible gene modules with TB disease severity.
- 29 Fig. S4. Schematic representation of zebrafish experiments.
- 30 Fig. S5. *stat2* mutagenesis blocks type I interferon signalling.
- 31 Fig. S6. Quantitation of cellular recruitment to the site of sterile tailfin transection.
- 32 Table S1. Interferon response modules.
- 33 Table S2. Zebrafish lines.
- 34 Table S3. *stat2* crRNAs, primers and amplicon sequences.
- 35 Table S4. ImageJ macro description.
- 36 Table S5. Python script workflow and programming.
- 37 Data file S1. Collated original data.
- 38 This pdf file includes Figs S1-S6 and Tables S2, S4 and S5.
- 39 Tables S1 and S3 and Data file S1 are provided as separate files.
- 40

41 **SUPPLEMENTARY FIGURES**



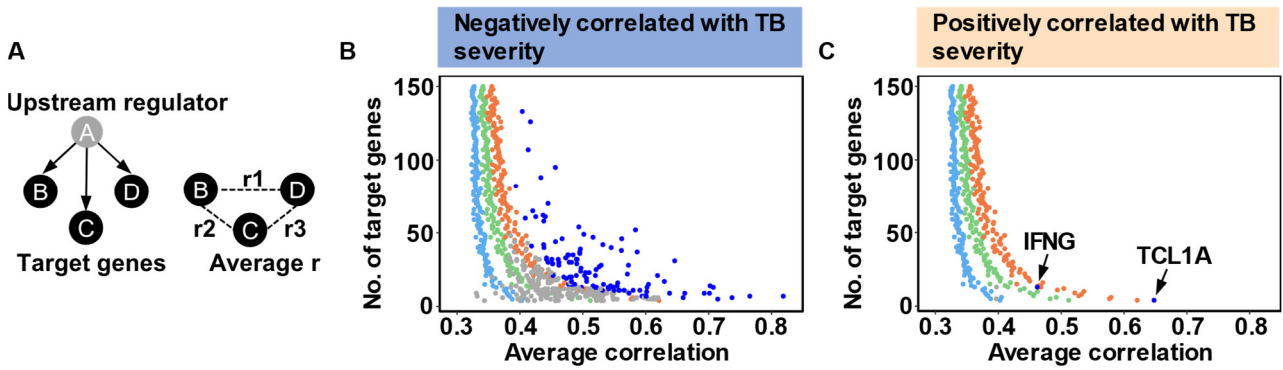
42

43 **Fig. S1. Batch correction, interindividual variation and pathway enrichment analysis of**
 44 **tuberculin skin test (TST) transcriptomic data from people with active tuberculosis (TB),**
 45 **related to Figure 1.** Principal component analysis of the integrated list of the 10% genes with least
 46 interindividual variance in expression from each library preparation run before **(A)** and after **(B)** batch

47 correction. **(C)** TST transcriptome genes (rows) for each study subject (columns); outlier transcripts
48 are indicated in black. **(D)** Reactome pathway enrichment within the integrated list of 3222 outlier
49 transcripts derived from the entire cohort, which comprise the TST transcriptome.

50

51



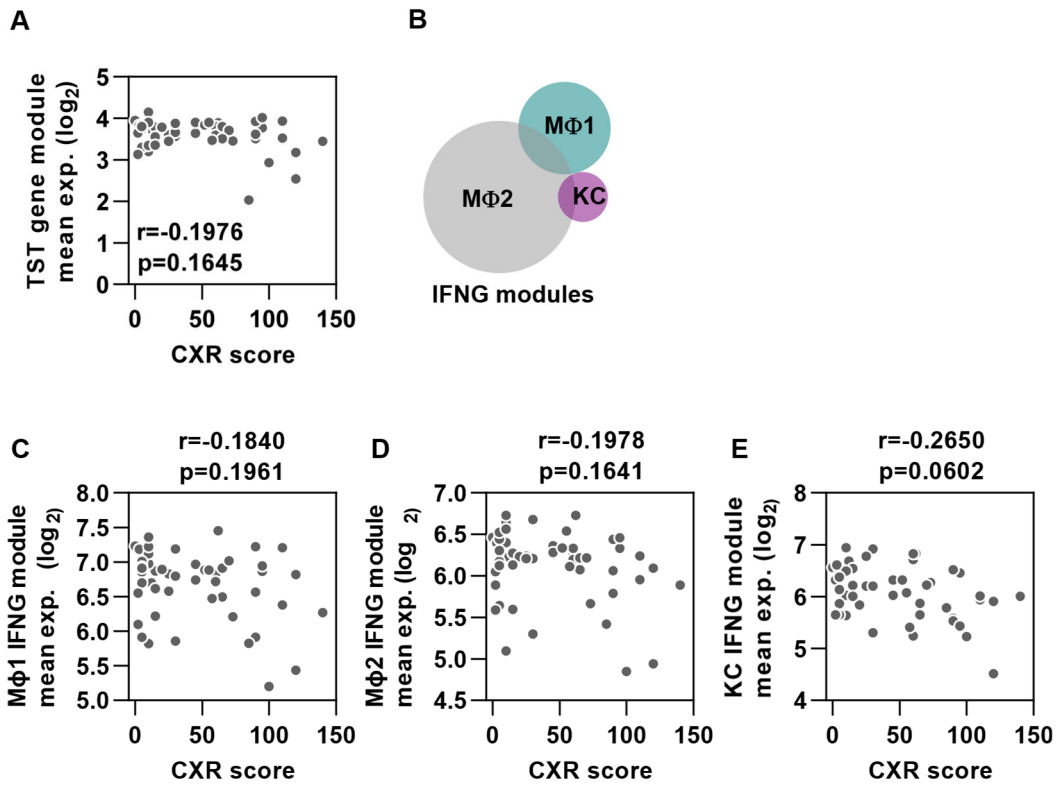
52

53 **Fig. S2. Identification of upstream regulator target gene modules, related to Figure 1. (A)**
 54 Schematic of a putative functional gene network (target genes B,C,D) regulated by an upstream
 55 molecule predicted to determine its expression (gene A). Correlation coefficients for the expression
 56 levels of its component genes are indicated (r_1 , r_2 , r_3). **(B, C)** Z-scores derived from the distribution
 57 of average correlation coefficients obtained from 100 iterations of randomly selecting groups of
 58 genes from the TB TST transcriptome are shown in light blue (z-score=1), green (z-score=2) and
 59 orange (z-score=3). Average correlation coefficients of upstream regulator target gene modules
 60 identified within TST transcriptome genes negatively correlated **(B)** or positively correlated **(C)**
 61 with disease severity are shown in dark blue (z-score ≥ 2 , FDR ≤ 0.05) and grey (z-score ≤ 2 +/- FDR ≥ 0.05)
 62 compared to equivalent sized random gene modules.

63

64

65



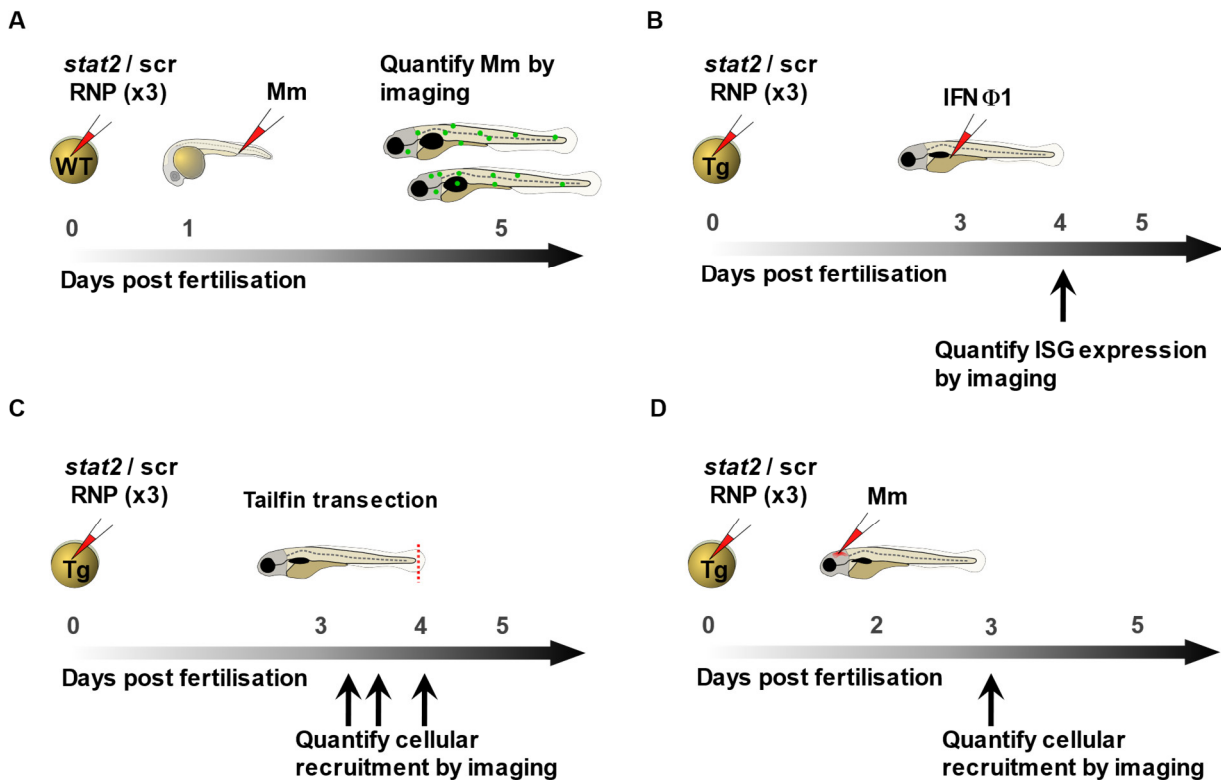
66

67 **Fig. S3. Relationship between the entire TST transcriptomic signature and interferon gamma**
 68 **inducible gene modules with TB disease severity, related to Figure 1. (A-E)** Average expression
 69 of the 3222 gene TST transcriptome **(A)** and three largely non-overlapping interferon gamma
 70 inducible gene modules derived from independent experimental data **(B-E)** is not significantly
 71 correlated with radiographic TB severity. r values and p values were derived from two-tailed
 72 Spearman rank correlations. CXR = Chest x-ray, MΦ = Macrophage, KC = Keratinocyte.

73

74

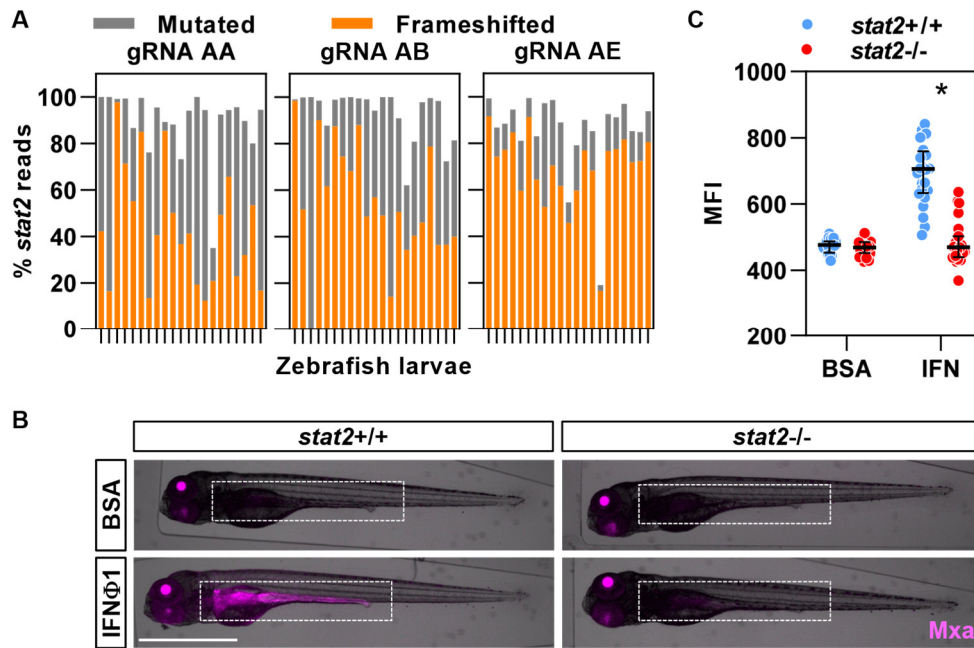
75



76

Fig. S4. Schematic representation of zebrafish experiments, related to Figures 2-7. (A) Three guide RNA (gRNA)/Cas9 ribonucleoproteins (RNPs) targeting distinct exons of *stat2* are injected into the yolk sac of wild type (WT) early one cell stage embryos to generate *stat2* CRISPants. Embryos from the same clutch are injected with three negative control “scrambled” RNPs (*scr*) which have no genomic target. 28-30 hour post-fertilisation control and *stat2* CRISPant embryos are intravenously infected with 400 colony forming units (cfu) of fluorescent *M. marinum* (Mm). Bacterial burden and dissemination are evaluated four days after inoculation by quantitative fluorescence microscopy. (B-D) *Tg(mxa:mCherry)*, *Tg(mpeg1:mCherry)* and *Tg(mpx:eGFP)* embryos (Tg) are injected with three *stat2* RNPs or *scr* RNPs as described in (A) to generate CRISPant embryos with fluorescent Mxa protein expression, macrophages or neutrophils, respectively. (B) Three day post-fertilisation (dpf) *stat2* CRISPant and control transgenic larvae are injected via the coelomic cavity with 1 nl of recombinant interferon phi 1 protein (1.25 mg/ml). Induced expression of the interferon stimulated gene (ISG) Mxa is measured by fluorescence microscopy at 24 hours. (C) A small portion of the tail fin is removed using a sterile microscalpel from three dpf *stat2* CRISPant and control transgenic embryos. Cellular recruitment to the site of sterile injury is assessed at 1, 6 and 24 hours post-wound, using quantitative fluorescence microscopy. (D) Two dpf *stat2* CRISPant and control transgenic embryos are infected with 200 cfu of *M. marinum* by injection into the hindbrain ventricle. Recruitment to the site of localized *M. marinum* infection is evaluated by fluorescence microscopy at 18 hours for macrophages and 6 hours for neutrophils.

96

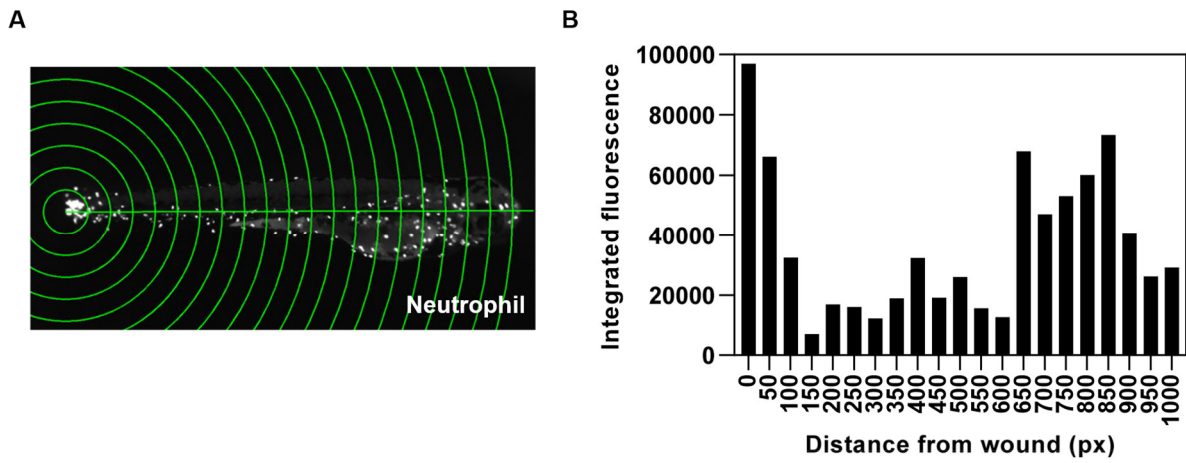


97

98 **Fig. S5. *stat2* mutagenesis blocks type I interferon signalling, related to Figure 2.** (A)
 99 Percentage of mutated (gray) and frameshifted (orange) DNA sequencing reads for each guide RNA
 100 (gRNA) target site, predicted using the ampliCan R package, for individual 4-5 day post-fertilization
 101 (dpf) zebrafish larvae subjected to yolk sac injection at the one cell stage with three gRNA/Cas9
 102 ribonucleoproteins (RNPs) targeting distinct *stat2* exons. Frameshifting mutations are those in which
 103 the length of inserted or deleted nucleotide sequences is not a multiple of three, leading to disruption
 104 of the normal reading frame. (B) Overlays of brightfield (gray) and fluorescence (magenta) images
 105 of *stat2* CRISPRant and scrambled RNP injected *Tg(mxa:mCherry)* four dpf larvae 24 hours following
 106 intra-coelomic injection of 1 nl of bovine serum albumin (BSA) control or recombinant interferon phi 1
 107 (IFN ϕ 1) protein (1.25 mg/ml). Scale bar = 1 mm. The red signal in the lens is due to the secondary
 108 cryaa:DsRed reporter to identify transgene carriers. (C) Quantitation of mean fluorescence intensity
 109 (MFI) representing Mxa protein expression in the gastrointestinal tract (dashed white outline in B).
 110 Data points represent individual zebrafish larvae and lines and error bars the median and
 111 interquartile range. p values were derived from two-tailed Mann-Whitney tests. * = p<0.05. Data are
 112 representative of two independent experiments.

113

114



115

116

Fig. S6. Quantitation of cellular recruitment to the site of sterile tailfin transection, related to

Figures 5 and 6. (A) Sholl circles (green) superimposed on an image of a three day post-fertilisation

Tg(mpx:eGFP) zebrafish larva six hours after tailfin transection. **(B)** Integrated fluorescence within

each circle provides a surrogate for the number of cells at each locus. px = Pixels.

120

121

122 **SUPPLEMENTARY TABLES AND TABLE LEGENDS**

123 **Table S1. Interferon response modules.** Gene composition of the interferon response modules.

124
125 **Table S2. Zebrafish lines.** Zebrafish lines used in this study are listed.

Zebrafish Line	Experiments
AB/TL (Tüpfel long fin) referred to as wild type	CRISPa generation Intravenous <i>M. marinum</i> infection
<i>Tg(cryaa:DsRed/MXA:mCherry-F)^{ump7}</i> (71) referred to as <i>Tg(mxa:mCherry)</i>	CRISPa generation Confirmation that <i>stat2</i> mutagenesis blocks type I interferon signalling
<i>Tg(mpeg1:Gal4-FF)gl25;Tg(UAS-E1b:nfsB.mCherry)c264</i> (72) referred to as <i>Tg(mpeg1:mCherry)</i>	CRISPa generation Quantitation of steady state macrophage numbers Macrophage recruitment to tailfin transection and hindbrain ventricle <i>M. marinum</i> infection
<i>Tg(mpx:eGFP)</i> (26)	CRISPa generation Quantitation of steady state neutrophil numbers Neutrophil recruitment to tailfin transection and hindbrain ventricle <i>M. marinum</i> infection

126
127 **Table S3. *stat2* crRNAs, primers and amplicon sequences.** Sequences of the *stat2* crRNAs,
128 Miseq primers and amplicon sequences.

129 **Table S4. ImageJ macro description.** The workflow and ImageJ functions used to semi-automate generation of single maximum intensity projection
 130 montages from the four contiguous z-stacks captured per zebrafish larva using a high-content wide-field fluorescence microscope (Hermes, IDEA Bio-
 131 Medical). The macro opens individual images, stitches them together, converts them into a stack, creates a single two-dimensional image with the
 132 maximum intensity values and saves the result as a tagged image format (TIF) file in the chosen folder. The saved files can be used for further analysis.
 133 The macro is designed to support batch processing, iterating through the specified steps for multiple positions, and concluding with the closure of
 134 windows for a clean and efficient workflow.

Function	Description	Steps
getDirectory	Prompt the user to select a directory containing images to be processed	Open a dialog box allowing the user to choose a directory
getString	Prompt the user to input a keyword representing the specific well position for processing eg A1	Open an input dialog prompting the user to enter the keyword
open	Open an image file for processing	Open individual image files corresponding to the specified keyword and naming convention
selectWindow	Select a specific image window for processing	Select the opened image windows according to the specific naming convention for each image in the series
run	Execute specific ImageJ commands for image processing	Execute the “ <i>Stack to Images</i> ” command to convert individual z planes into a stack Use the “ <i>Images to Stack</i> ” command with the “ <i>use keep</i> ” option to combine the individual images into a stack while preserving their original order Use the “ <i>Z Project...</i> ” command with the “ <i>projection = [Max Intensity]</i> ” option to create a max intensity projection of the stack
saveAs	Save the processed image with a standardised filename and format	Save the processed image as a TIFF file with a filename constructed using the specified keyword and suffix to indicate processing steps
close	Close the active image window or stack after processing	Close the active image windows or stacks to maintain a tidy workspace

135

136

137 **Table S5. Python script workflow and programming.** The workflow and package functions used to generate measures of total cell numbers and
 138 cellular recruitment. BF = Brightfield.

Workflow	Steps	Package functions used
get_user_input	Initialize window for user to select BF and fluorescence images	OpenCV: cv2.namedWindow, NumPy: np.array
	Open BF image and ask for user-defined start and end point	OpenCV: cv2.imread, cv2.setMouseCallback, cv2.imshow, cv2.waitKey
	Return coordinates of selected points	
draw_sholl_circles	Calculate distance between selected points	NumPy: np.linalg.norm, np.array
	Set distance between Sholl circles	OpenCV: cv2.line, cv2.circle
calculate_total_fluorescence	Image preprocessing	OpenCV: cv2.cvtColor, cv2.GaussianBlur, cv2.adaptiveThreshold, SciPy: measure.regionprops, ndimage.label
	Calculate integrated fluorescence of entire image	NumPy: np.sum, SciPy: measure.regionprops
calculate_fluorescence_per_circle	Mask image based on each Sholl circle	OpenCV: cv2.circle, cv2.bitwise
	Compute integrated fluorescence for each Sholl circle	SciPy: measure.regionprops
create_csv_files	Organise and save data to CSV files	Pandas: pd.read_csv, pd.DataFrame.to_csv, os: os.path.join, OpenCV: cv2.writer
process_image	Coordinate image processing tasks	OpenCV: cv2.imread, cv2.destroyAllWindows
	Read input image	OpenCV: cv2.imread

139