

1 **High burden of chronic kidney disease of unknown cause among patients receiving renal**  
2 **replacement therapy in Northeast Nigeria: A cross-sectional survey of haemodialysis units.**

3  
4 Baba Waru Goni<sup>1,3,9\*</sup>, Hamidu Suleiman Kwairanga<sup>2,3,4</sup>, Aliyu Abdu<sup>5</sup>, Ibrahim Ummate<sup>9</sup>, Alhaji  
5 Abdu<sup>6</sup>, Ahmed Ibrahim Ba'aba<sup>12</sup>, Mohammad Maina Sulaiman<sup>9</sup>, Loskurima Umar<sup>9</sup>, Gana M.L<sup>10</sup>,  
6 Aliyu Abdulkadir<sup>7</sup>, Sabiu Musa<sup>8</sup>, Shatuwa Adamu<sup>8</sup>, Idris A. Usman<sup>7</sup>, Hauwa Alhaji Sabo<sup>7</sup>, Idris  
7 Musa Abubakar<sup>11</sup>, Hamza Bukar Adam<sup>13</sup>, Ismail Alhaji Umar<sup>13</sup>, Ayabaryu Papka<sup>14</sup>, Modu  
8 Mustapha<sup>14</sup>, Yauba Mohammed Saad<sup>15</sup>, Amin Oomatia<sup>16</sup>, Mahmoud Bukar Maina<sup>3,4\*</sup>, Neil  
9 Pearce<sup>17</sup>, Ben Caplin<sup>16</sup>

10  
11 **Correspondence to:** [mahmoud.maina@biortc.com](mailto:mahmoud.maina@biortc.com) , [babawaru@gmail.com](mailto:babawaru@gmail.com)

12  
13 <sup>1</sup>Department of Medicine, Yobe State University Teaching Hospital Damaturu, Nigeria.

14 <sup>2</sup>Department of Human Anatomy, Faculty of Basic and Allied Medical Sciences, College of  
15 Medical Science, Gombe State University, Gombe State, Nigeria.

16 <sup>3</sup>Biomedical Science Research and Training Centre Damaturu, Yobe State, Nigeria

17 <sup>4</sup>TReND in Africa

18 <sup>5</sup>Department of Medicine Bayero University Kano/Aminu Kano Teaching Hospital, Kano Nigeria.

19 <sup>6</sup>Department of Internal Medicine Federal University Dutse, Jigawa State, Nigeria

20 <sup>7</sup>Renal Dialysis Center, Yobe State University Teaching Hospital Damaturu, Nigeria.

21 <sup>8</sup>Renal Dialysis Center, Federal Medical Centre Nguru, Yobe State, Nigeria.

22 <sup>9</sup>Department of Medicine University of Maiduguri /University of Maiduguri Teaching Hospital,  
23 Maiduguri, Borno State, Nigeria.

24 <sup>10</sup>Department of Community Medicine, College of Medical Sciences, Yobe State University  
25 Damaturu, Nigeria.

26 <sup>11</sup>Fatima Abubakar Renal Dialysis Center, State Specialist Hospital Hadejia, Jigawa State, Nigeria.

27 <sup>12</sup>African Field Epidemiology Network (AFENET), Yobe State Field Office, Nigeria.

28 <sup>13</sup>Abubakar Aliyu Renal Dialysis Center, State Specialist Hospital Maiduguri, Borno State, Nigeria

29 <sup>14</sup>Renal Dialysis Center, University of Maiduguri Teaching Hospital, Maiduguri, Borno State,  
30 Nigeria.

31 <sup>15</sup>Department of Paediatrics University of Maiduguri/University of Maiduguri Teaching Hospital,  
32 Borno State, Nigeria

33 <sup>16</sup>Centre for Kidney and Bladder Health, University College London, London, UK

34 <sup>17</sup>Department of Medical Statistics, London School of Hygiene and Tropical Medicine London,  
35 UK.

36  
37 **ABSTRACT**

38  
39 **Introduction**

40 Chronic kidney disease (CKD) is emerging as a significant public health concern in northeastern  
41 Nigeria, particularly in states such as Yobe and Borno. Despite its increasing impact, there is a  
42 lack of data characterizing this public health issue. This study aims to explore the prevalence,  
43 spatial distribution, and risk factors for CKD among patients receiving haemodialysis (HD) in the  
44 region.

45

## 46 **Methodology**

47 A cross-sectional survey of HD centres in Yobe, Borno, and Jigawa States of Nigeria was  
48 conducted. Questionnaire responses were obtained on demographic, social, and clinical data.  
49 Spatial analyses were conducted to determine the geographic distribution of the cases.

50

## 51 **Results**

52 We identified 376 patients receiving HD services across 4 centres. Of these, 207 (55.1%) were  
53 male and the mean age was  $46.56 \pm 16.4$ . Most patients reside in urban areas (67.6%). The main  
54 pre-dialysis occupations included civil service (100 [26.6%]), agriculture (65 [17.3%]), and trading  
55 (58 [15.4%]). 'Hypertension' (195 [51.9%]) was the most common self-reported primary renal  
56 disease, followed by unknown causes (70 [18.6%]) and Diabetic Kidney Disease (30 [8%]).  
57 Regional analysis demonstrated a particularly high burden of disease in Bade and Jakusko Local  
58 Government Areas.

59

## 60 **Discussion and Conclusion**

61 Spatial analysis suggests the existence of a CKD hotspot geographically associated with  
62 communities along the River Yobe, raising the possibility of an important environmental cause of  
63 disease. This study also highlights the lack of access to adequate diagnosis and geographical  
64 clustering of CKD burden in this region. These findings further reinforce the need for population-  
65 representative studies to characterize the burden of CKD alongside strategic healthcare  
66 interventions and collaboration among stakeholders aimed at improving access to care.

67

## 68 **INTRODUCTION**

69 CKD is a significant global health issue with an estimated prevalence of 13.4%.<sup>1,2</sup> Its emergence  
70 as a major contributor to morbidity and mortality worldwide highlights the significance for  
71 comprehensive research and intervention across populations.<sup>1,3</sup> The global rise in CKD is  
72 attributed to factors such as diabetes mellitus, hypertension, obesity, and an aging population<sup>4</sup>.  
73 However, regional variations exist, with unique determinants like infections and exposure to  
74 environmental toxins contributing to CKD's prevalence in specific areas<sup>5</sup>.

75

76 CKD of unknown cause (CKDu) has been reported in rural communities of developing countries,  
77 including Sri Lanka, India, Central American nations, and North Africa<sup>1</sup>. Unlike typical CKD, CKDu  
78 is not linked to common risk factors such as hypertension or diabetes. In Nigeria, particularly in  
79 the North Eastern region along the Kumadugu River valley, anecdotal reports and small-scale  
80 studies have indicated a high prevalence of CKD.<sup>1,3</sup> The Bade community in Northern Yobe State  
81 has been identified as a CKD hotspot, with a significant number of CKD cases without a clear  
82 underlying cause.<sup>6</sup>

83

84 To bridge this knowledge gap, we conducted a cross-sectional survey of HD centers in the region.  
85 This approach aligns with the 'passive detection' strategies recommended by the International  
86 Society of Nephrology's International Consortium of Collaborators on CKDu.<sup>7</sup> The survey aims to  
87 delineate the geographic distribution, underlying diagnoses, and risk factors for disease among  
88 the HD population in Yobe and surrounding states.

89

## 90 **METHODS**

91

### 92 **Data Collection:**

93 Ethical approval for the study was obtained from the study centres, as well as the Yobe State  
94 Ministry of Health in Nigeria. Data collection for this study was carried out from January to June  
95 2023, coinciding with patients' scheduled HD sessions at designated centers to ensure minimal  
96 disruption to their routine care. The study encompassed all HD facilities in the north-eastern  
97 states of Borno and Yobe, specifically Yobe State University Teaching Hospital (YSUTH) in  
98 Damaturu, Federal Medical Center in Nguru (FMC\_Nguru), University of Maiduguri Teaching  
99 Hospital (UMTH), and State Specialist Hospital in Maiduguri (SSH\_Maiduguri). Additionally, State  
100 Specialist Hospital Hadejia (SSH\_Hadejia) in Jigawa State was included to provide a broader  
101 perspective on the CKD prevalence in the region. Despite Jigawa's location in northwestern  
102 Nigeria, Hadejia is the largest town in the north-eastern part of Jigawa state potentially providing  
103 treatment for patients living in Yobe state.

104

105 Patients were individually approached for participation, and informed consent was secured from  
106 each before inclusion in the study. Trained data collectors then administered a comprehensive,  
107 researcher-adapted questionnaire to those who consented. This questionnaire was designed to  
108 capture a range of information, including demographic details (age, gender), clinical data  
109 (duration and frequency of dialysis treatments), and potential factors contributing to the etiology  
110 of CKD. Additional relevant variables, such as occupation and residential history, were also  
111 gathered to support a multifaceted analysis of CKD within the population.

112

### 113 **Table 1 Inclusion And Exclusion Criteria**

114

#### Inclusion Criteria

1. Individuals receiving HD treatment at the selected HD centers between January 2023 and June 2023
2. Patients who were diagnosed with established CKD.
3. Patients who provided informed consent to participate in the study.

#### Exclusion Criteria

1. Patients undergoing HD treatment outside the designated study centers even if they were living in the state under study.
2. Individuals with acute kidney injury (AKI), which is defined as an abrupt decrease in kidney function that includes both injury (structural damage) and impairment (loss of function).
3. CKD patients who are not on HD
4. Those who did not provide informed consent.
5. CKD patients receiving HD services at more than one centre.

115

116 **Data Analysis:**

117 Data analysis was performed using Python 3.10. Descriptive statistics in the form of mean (SD),  
118 median (IQR) and frequencies were used to characterize the study population. Geographical data  
119 was presented using geopandas and geoplots for mapping HD prevalence across the study region.  
120 Data visualizations, including bar charts and heatmaps, were created using matplotlib and  
121 seaborn.

122

123 **RESULTS**

124

125

126 **Description of study population by centre**

127

128 The study enrolled 376 participants (Table 2), with a higher proportion of males (55.1%) than  
129 females (44.9%). Variations in sex distribution were observed among centers, with YSUTH having  
130 the highest male representation (61.6%) and FMC\_Nguru reporting the highest female  
131 representation (54.5%). The mean age was  $46.56 \pm 16.4$  years, varying across centers. SSH  
132 Maiduguri and UMTH had the highest urban representation (91.9% and 75.6% respectively). Civil  
133 servants comprised 26.6% of participants, with SSH\_Maiduguri reporting the highest proportion  
134 (38.4%). Traders accounted for 15.4%, again with SSH\_Maiduguri reporting the highest (27.3%).  
135 The agriculture sector represented 17.3%. Transport and fishing occupations were less  
136 represented, and no participants were from the mining sector.

**Table 2: Description of study population by centre**

Variables		All centres	ysuth	umth	ssh_maiduguri	fmc_nguru	ssh_hadeja
Number of patients [Count(%)]		376(100)	112(29.8)	86(22.9)	99(26.3)	44(11.7)	35(9.3)
Age (Mean±SD)		46.56±16.4	44.79±16.4	45.73±17.6	45.73±13.8	55.93±15.4	44.89±17
Sex	Male	207(55.1)	69(61.6)	47(54.7)	50(50.5)	20(45.5)	21(60)
	Female	169(44.9)	43(38.4)	39(45.3)	49(49.5)	24(54.5)	14(40)
Mean Duration receiving HD (in months)		10.1±9.5	8.49±6.1	16.22±12.9	7.78±5.9	5.68 ± 2.5	12.29 ± 13.4
Urban/rural (pre-dialysis residence)	Urban	254(67.6)	60(53.6)	65(75.6)	91(91.9)	24(54.5)	14(40)
	Rural	122(32.4)	52(46.4)	21(24.4)	8(8.1)	20(45.5)	21(60)
Main occupation pre- dialysis	Agriculture	65(17.3)	27(24.1)	5(5.8)	14(14.1)	12(27.3)	7(20)
	Fishing	6(1.6)	3(2.7)	2(2.3)	1(1)	0(0)	0(0)
	Civil Servants	100(26.6)	22(19.6)	31(36)	38(38.4)	4(9.1)	5(14.3)
	Mining	0(0)	0(0)	0(0)	0(0)	0(0)	0(0)
	Traders	58(15.4)	12(10.7)	13(15.1)	27(27.3)	1(2.3)	5(14.3)
	Transport	7(1.9)	2(1.8)	2(2.3)	1(1)	2(4.5)	0(0)
	Others	140(37.2)	46(41.1)	33(38.4)	18(18.2)	25(56.8)	18(51.4)

Table 3: Self-reported primary renal disease							
Variables		All centres	ysuth	umth	ssh_maiduguri	fmc_nguru	ssh_hadeja
Self-reported primary renal disease	GN	43(5.9)	4(3.6)	14(16.3)	9(9.1)	11(25)	5(14.3)
	DKD	30(8)	6(5.4)	8(9.3)	6(6.1)	4(9.1)	6(17.1)
	'Hypertension'	195(51.9)	60(53.6)	24(27.9)	72(72.7)	24(54.5)	15(42.9)
	Unknown	70(18.6)	36(32.1)	18(20.9)	12(12.1)	1(2.3)	3(8.6)
	Other	22(5.9)	4(3.6)	13(15.1)	0(0)	1(2.3)	4(11.4)
Had renal biopsy	Yes	25(6.6)	1(0.9)	4(4.7)	2(2)	16(36.4)	2(5.7)
	No	351(93.4)	111(99.1)	82(95.3)	97(98)	28(63.6)	33(94.3)
Diabetes	Yes	35(9.3)	6(5.4)	11(12.8)	5(5.1)	5(11.4)	8(22.9)
	No	341(90.7)	106(94.6)	75(87.2)	94(94.9)	39(88.6)	27(77.1)
Hypertension	Yes	238(63.3)	75(67)	42(48.8)	65(65.7)	32(72.7)	24(68.6)
	No	138(36.7)	37(33)	44(51.2)	34(34.3)	12(27.3)	11(31.4)
HIV	Yes	8(2.1)	0(0)	5(5.8)	3(3)	0(0)	0(0)
	No	368(97.9)	112(100)	81(94.2)	96(97)	44(100)	35(100)
TB	Yes	6(1.6)	2(1.8)	1(1.2)	0(0)	2(4.5)	1(2.9)
	No	370(98.4)	110(98.2)	85(98.8)	99(100)	42(95.5)	34(97.1)

139 The distribution of self-reported primary renal diseases among patients in the selected centers  
 140 (Table 3) showed the diverse etiologies contributing to CKD. Hypertension was identified as the  
 141 most common self-reported primary renal disease, comprising 51.9% of patients across all  
 142 centers. State Specialist Hospital Maiduguri reported the highest proportion of patients  
 143 attributing their CKD to hypertension at 72.7%. Unknown etiology accounted for 18.6% overall,  
 144 with the highest proportion at YSUTH Damaturu at 32.1%. Diabetic Kidney Disease (DKD) and  
 145 Glomerulonephritis (GN) were other notable self-reported primary renal diseases, representing  
 146 8% and 5.9% of patients, respectively, across all centers. Among these, FMC Nguru reported the  
 147 highest proportion of patients with DKD at 9.1% and GN at 25%. Additionally, the category  
 148 "Other" encompassed 5.9% of patients, with variations among centers.

149

### 150 **Number of CKD Patients receiving HD (CKD-HD) by Local Government Area (LGA)**

151

152 The prevalence of CKD-HD varied across local government areas within the study region. In Bade  
 153 Local Government Area of Yobe State, the prevalence was notably high, with 11 per 100,000  
 154 individuals on HD (7–15 per 100,000 at a 95% confidence interval) (Table 4). This was closely  
 155 followed by Jakusko LGA of Yobe State with 8 per 100,000. Nguru, Damaturu, Bursari, Potiskum,  
 156 Tarmuwa, and Yunusari LGAs all had a prevalence between 3 and 4 per 100,000, while all other  
 157 areas had a prevalence of less than 2 per 100,000.

158

159 In Borno State, Askira/Uba had the highest prevalence of CKD-HD, with a prevalence of 6 per  
 160 100,000 individuals on dialysis, followed by Gwoza with 5 cases per 100,000 individuals. Beyond  
 161 these, no other local government area in Borno State had a prevalence exceeding 3 per 100,000  
 162 individuals. For the northeastern zone of Jigawa State which constitutes eight local government  
 163 areas (Auyo, Birniwa, Guri, Hadejia, Kafin Hausa, Kaugama and Kiri Kasama), the number of  
 164 observed HD patients with CKD was generally low, with all areas reporting less than 2 cases per  
 165 100,000 individuals, except for Hadejia, which stood out with 5 cases per 100,000 individuals.

166

Table 4: Prevalence of HD for CKD in some selected LGAs in Yobe and Borno States

LGA	State	Number of Reported Cases	Estimated Population	Sample Proportion (Per 10 <sup>5</sup> )	Confidence Interval(95%)	
					Lower Limit	Upper Limit
Bade	Yobe	35	321,241	11.0	7.3	15.0
Jakusko	Yobe	13	163,035	8.0E	4.0	12.3
Askira-Uba	Borno	16	273,085	6.0E	3.0	9.0
Gwoza	Borno	11	229,998	5.0E	2.0	8.0

167

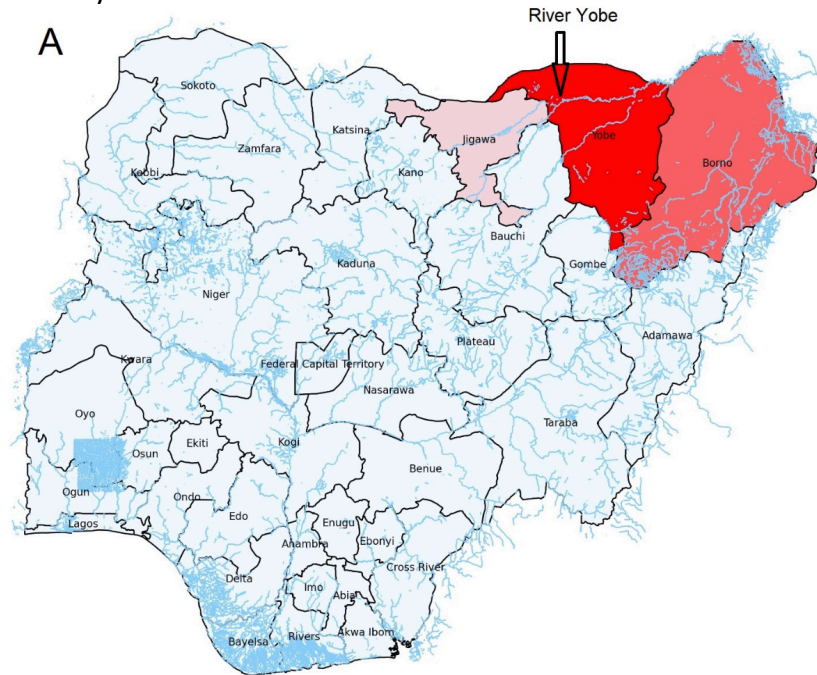
### 168 **Spatial Distribution of CKD Cases**

169

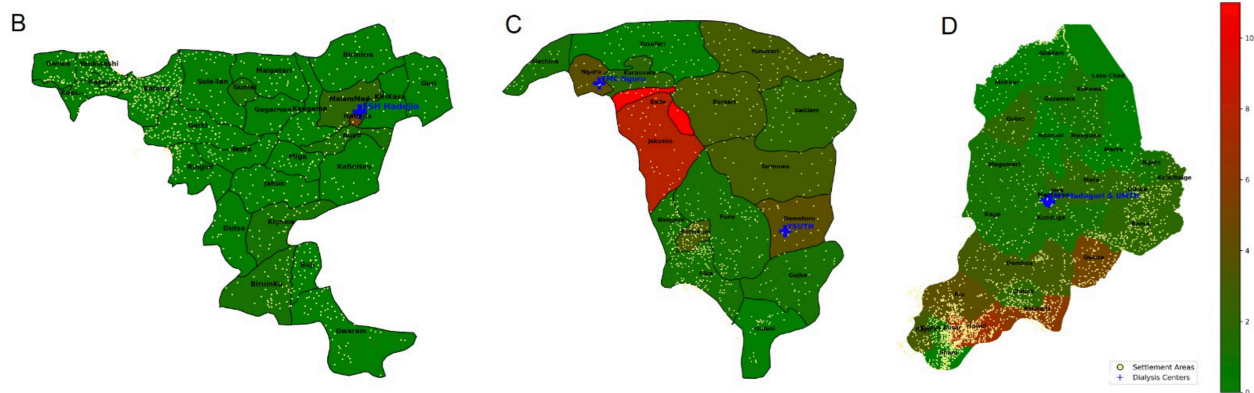
170 Our spatial analysis revealed marked regional disparities in CKD-HD prevalence within the  
 171 surveyed states (Figure 1). The choropleth maps (Panels A, B, C, and D) indicate a higher



172 concentration of CKD cases in Yobe and Borno states, particularly in the Bade and Askira/Uba  
173 Local Government Areas, which reported the highest incidences of 11 and 6 cases per 100,000  
174 individuals, respectively



175  
176  
177  
178



179  
180  
181  
182  
183  
184  
185  
186  
187  
188  
189

**Figure 1:** Spatial Distribution of Reported CKD-HD Cases by State and Local Government of Patient Origin. A: Choropleth Map Illustrating the Study Area and Total CKD Cases by States. B, C, & D: Choropleth Maps Depicting the Number of Reported CKD-HD Cases per hundred thousand of the individuals at the Local Level for Three States, with Yellow Points Signifying Settlement Distribution and blue crosses signifying the dialysis centers.



## 190 DISCUSSION

191

192

193 We investigated the number of individuals receiving HD within the northeastern Nigeria.  
194 Focusing on some selected HD units in Yobe, Borno, and Jigawa states, our study aimed to provide  
195 a comprehensive understanding of CKD in Northeastern Nigeria. We estimated population  
196 numbers from the 2006 census data and reported population growth by WHO.<sup>8,9</sup> We collected  
197 the number of reported dialysis-dependent CKD cases in the study area and presented the  
198 distribution of CKD patients receiving HD across the local government areas of Yobe, Borno. We  
199 used HD as surrogate for CKD in the study, because a lot of CKD patients in the community may  
200 be asymptomatic and therefore may not come to hospital.

201

202 Notable findings include localized clusters of CKD patients receiving HD in the selected centers  
203 from certain local governments, such as Bade and Jakusko in Yobe State, Askira-Uba, and Gwoza  
204 in Borno State. We encountered challenges in accurately categorizing the primary renal disease  
205 (PRD) due to limitations in diagnostic facilities, especially for renal biopsy. Despite these  
206 obstacles, our findings revealed a number of cases of CKD of unknown etiology, emphasizing the  
207 urgency of enhanced healthcare infrastructure and targeted research efforts in the region.

208 In our study, we found that many CKD patients on HD reported hypertension as their PRD.  
209 However, it's important to clarify that in most cases, hypertension was identified for the first time  
210 after presenting with clinical features of CKD, suggesting that hypertension was secondary to,  
211 rather than a primary cause of CKD. In addition, most patients in the study did not have their  
212 previous medical records, so we could not assess their premorbid medical history. Given the  
213 widespread presence of hypertension in the study area and its connection to kidney disease, it is  
214 possible that some of these CKD-HD cases may be unknown or secondary to a known cause such  
215 as IgA nephropathy etc since the cases were never biopsied or comprehensively investigated.

216

217 The relatively high number of HD patients in Yobe State compared to the observed rates in  
218 previous studies for West Africa, Jigawa and Kano in the northwest and even other north eastern  
219 states such as Borno and Bauchi States emphasizes the regional variability and complexity of the  
220 CKD landscape in Nigeria and may be potentially attributed to various factors such as  
221 environmental, genetic, and possible geoclimatic factors that differ across these regions.<sup>10-12</sup> It  
222 is also important to emphasize the challenges observed by Okoye and Mamven's analysis of HD  
223 in Nigeria, where they stated that limited access to dialysis may contribute to underestimations  
224 of CKD prevalence.<sup>13</sup> The relationships between our localized study and these insights emphasize  
225 the urgent need for comprehensive strategies to accurately identify and address CKD in northern  
226 Nigeria. Our study exclusively focused on patients receiving HD which may serve as surrogate for  
227 CKD; offering a limited perspective and/or a limitation on end-stage kidney disease (ESKD) within  
228 this specific cohort. It should therefore be noted that our study did not include pre-dialysis CKD,  
229 which will influence the observed prevalence and patterns of CKDu in the broader population.  
230 Furthermore, the prevalence of CKD observed among HD patients may not fully reflect the true  
231 extent of the CKD burden in the regions, as the majority of residents may face financial and  
232 geographic barriers limiting their access to HD services. Given the relatively high costs associated  
233 with HD in low-and-middle income countries (LMICs), individuals with CKD who cannot afford or

234 access this treatment might remain undiagnosed and unaccounted for in our study. Also, factors  
235 such as cultural norms, may significantly impact women's ability to receive dialysis.

236  
237 These findings suggest the urgent need for targeted interventions, including improved access to  
238 affordable healthcare, community-based CKD screening programs, and enhanced infrastructure  
239 for early detection and management of CKD in the region.

240  
241 Bade and Jakusko Local Government Areas were identified as potential hotspots, exhibiting a  
242 notably high prevalence of CKD cases. One potentially important factor may be their source of  
243 drinking water. The predominant source in these communities was borehole water, with a  
244 substantial proportion of patients using sachet water, which also originates from boreholes. This  
245 highlights the importance of investigating the quality of water, as a potential causative factor for  
246 CKD in the region. The elevated number of cases in Hadejia also raises questions about potential  
247 contributing factors. The presence of a river connecting Hadejia with northern Yobe State<sup>14</sup> may  
248 facilitate the transmission of environmental contaminants or pathogens that could influence CKD  
249 prevalence. The distribution of dialysis centres and settlement patterns suggests that access to  
250 healthcare services and population density may play roles in the observed CKD distribution. This  
251 heterogeneity highlights the need for tailored healthcare interventions in the Northeastern  
252 region.

253  
254 Males constitute the majority of cases in our study, with a particularly strong male presence  
255 observed at YSUTH and State SSH\_Maiduguri. Conversely, SSH\_Hadejia displays a more balanced  
256 gender distribution. This variance suggests the influence of distinct regional factors on CKD  
257 prevalence and aligns with previously reported region-specific trends of CKD in the north-eastern  
258 part of Nigeria.<sup>6</sup> The variations may also highlight the possible lack of access to care by women.  
259 The reason why majority of CKD patients at the two HD centres in Borno State (i.e. UMTH and  
260 SSH Maiduguri) reported being resident in urban area may be due to population displacement as  
261 a result of over a decade of 'Boko Haram' insurgency in the region. The protracted armed conflict  
262 displaced most of the rural population in Borno state. This displaced rural population are now  
263 residing among host community and designated Internally Displaced Persons' (IDP) camps in the  
264 capital city of Maiduguri.

## 265 266 **CONCLUSIONS AND RECOMMENDATIONS**

267  
268 In conclusion, this study sheds light on the proportions of Yobe and Borno State populations  
269 receiving HD. The spatial distribution analysis reveals potential geographic clusters of CKD cases,  
270 in specific areas, such as Bade and Jakusko Local Government areas of Yobe State. While  
271 geographic proximity and shared water resources may play a role in the observed prevalence in  
272 some regions, comprehensive epidemiological investigations are essential to understand the  
273 nature of CKD's causative factors. In addressing the CKD challenge in northeastern Nigeria,  
274 collaboration between healthcare authorities, researchers, and communities is crucial.

275  
276 To obtain a more accurate representation of CKD prevalence in the general population,  
277 comprehensive community-based surveys are crucial. Such an approach would enable the

278 inclusion of a broader range of socioeconomic groups, providing valuable insights for public  
279 health initiatives, resource allocation, and interventions to address the wider CKD landscape in  
280 northeastern Nigeria. Environmental factors such as the source of drinking water and potential  
281 agricultural contaminants, socioeconomic disparities, limited healthcare infrastructure, climatic  
282 conditions like heat stress, and challenges in accessing timely medical services.

283

284

285 **Supplementary Materials**

286 The raw data, Images, and codes for the analysis are available [here](#)

287 **REFERENCES**

288

- 289 1. Lv, J. C. & Zhang, L. X. Prevalence and Disease Burden of Chronic Kidney Disease. *Adv.*  
290 *Exp. Med. Biol.* **1165**, 3–15 (2019).
- 291 2. Kovesdy, C. P. Epidemiology of chronic kidney disease: an update 2022. *Kidney Int. Suppl.*  
292 **12**, 7–11 (2022).
- 293 3. Lankinen, R. *et al.* Cardiovascular Determinants of Mortality in Advanced Chronic Kidney  
294 Disease. *Am. J. Nephrol.* **51**, 726–735 (2020).
- 295 4. Smyth, L. J., Duffy, S., Maxwell, A. P. & McKnight, A. J. Genetic and epigenetic factors  
296 influencing chronic kidney disease. *Am. J. Physiol. - Ren. Physiol.* **307**, 757–776 (2014).
- 297 5. Friedman, D. J. Genes and environment in chronic kidney disease hotspots. *Curr. Opin.*  
298 *Nephrol. Hypertens.* **28**, 87–96 (2019).
- 299 6. Babagana-Kyari, M., Kazeem, M. K. & Jajere, A. A. THE CHRONIC KIDNEY DISEASE OF  
300 UNKNOWN AETIOLOGY (CKDu) EPIDEMICS IN NORTHERN YOBE STATE. *African J. Heal.*  
301 *Saf. Environ.* **3**, 31–45 (2022).
- 302 7. Caplin, B. *et al.* The International Society of Nephrology’s International Consortium of  
303 Collaborators on Chronic Kidney Disease of Unknown Etiology: report of the working  
304 group on approaches to population-level detection strategies and recommendations for  
305 a minimum dataset. *Kidney Int.* **95**, 4–10 (2019).
- 306 8. NPC. State Population, 2006 - Nigeria Data Portal.  
307 <https://nigeria.opendataforafrica.org/ifpbxbd/state-population-2006>.
- 308 9. WHO. Nigeria | Data. <https://data.worldbank.org/country/nigeria?view=chart>.
- 309 10. Yilmaz, S., Calikoglu, E. O. & Kosan, Z. Assessment of Health-Related Quality of Life of  
310 Chronic Kidney Disease Patients in Aminu Kano Teaching Hospital, Kano. *Niger. J. Clin.*  
311 *Pract.* **22**, 1070–1077 (2019).
- 312 11. Abdu, A., Abdu, A. & Arogundade, F. Prevalence and Pattern of Chronic Kidney Disease-  
313 Mineral Bone Disorders among Hemodialysis Patients in Kano, Northwest Nigeria. *Ann.*  
314 *Afr. Med.* **18**, 191 (2019).
- 315 12. Alhaji, A., Ibrahim, M., Mahmood, K., Yakubu, A. & Mustapha Sabo Umar. Clinical  
316 characteristics and outcomes of hemodialysis in a new center in Northern Nigeria. *Niger.*  
317 *Med. J.* **61**, 340–344 (2020).
- 318 13. Okoye, O. & Mamven, M. Global Dialysis Perspective: Nigeria. *Kidney360* **3**, 1607–1610  
319 (2022).
- 320 14. Hall, M. E. *et al.* Obesity, hypertension, and chronic kidney disease. *Int. J. Nephrol.*  
321 *Renovasc. Dis.* **7**, 75–88 (2014).

322

323

324

325

326

327

328