

Supplemental Appendix

For “*The Integration of Health Equity into Policy to Reduce Disparities: Lessons from California during the COVID-19 Pandemic*”

Authors: Ada T. Kwan PhD, MHS^{1*}, Jason Vargo PhD, MPH^{2,3*}, Caroline Kurtz PhD², Mayuri Panditrao, PhD, MPH², Christopher M. Hoover PhD, MPH², Tomás M. León PhD², David Rocha², William Wheeler PhD², Seema Jain MD, MPH², Erica S. Pan MD, MPH^{2,4}, Priya B. Shete MD, MPH¹

1. Division of Pulmonary and Critical Care Medicine, San Francisco General Hospital, University of California San Francisco, San Francisco, CA USA
2. California Department of Public Health, Sacramento and Richmond, CA USA
3. Federal Reserve Bank of San Francisco, San Francisco, CA USA
4. Division of Infectious Diseases, Department of Pediatrics, University of California San Francisco, San Francisco, CA USA

*Authors contributed equally to this work.

Appendix A. Supplemental Background	S2
Appendix B. Supplemental Results	S6
Appendix References	S14

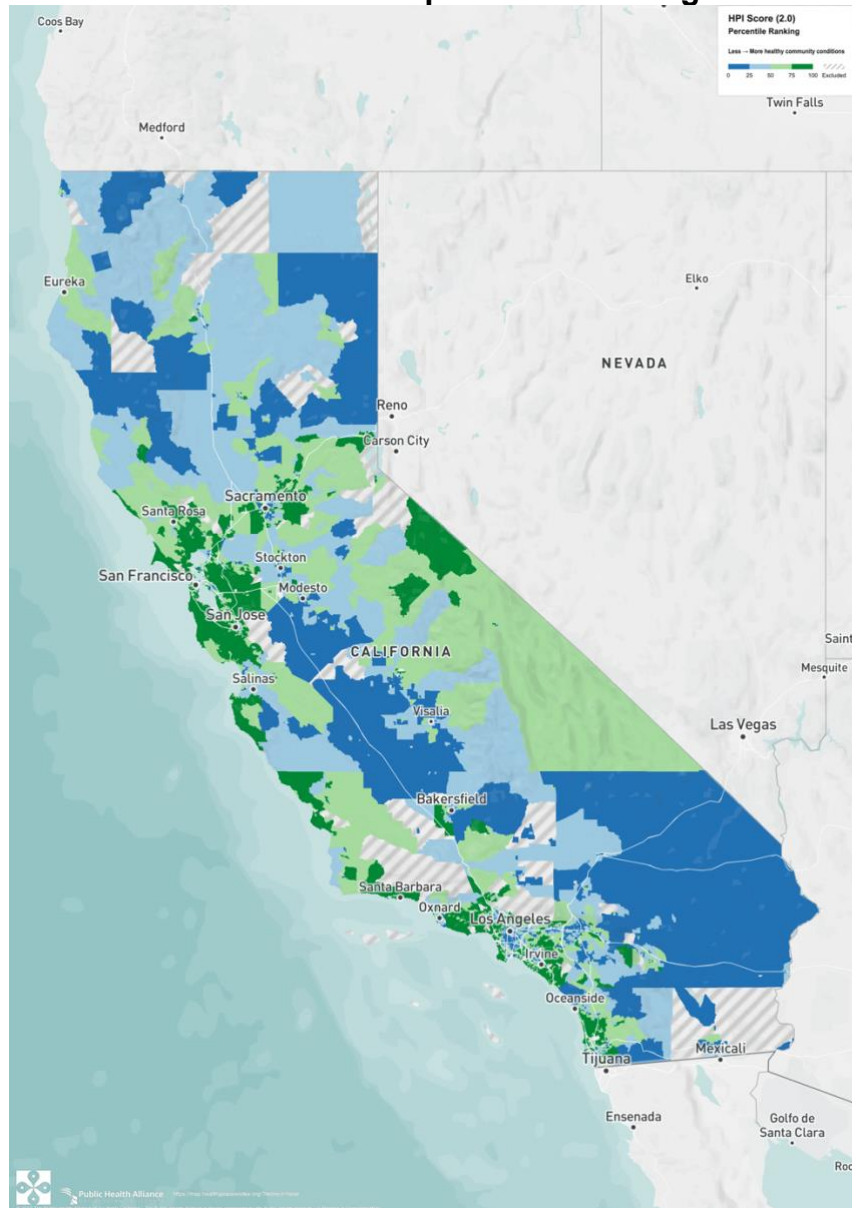
Appendix A. Supplemental Background

Appendix A1. HPI version 2.0 Constituents: Policy Action Areas (Domains), Indicators, and their Data Sources.

Indicator	Policy Domains	Data Source†, Year HPI 2.0
1	Economic	
	Percent of the population with an income exceeding 200% of federal poverty level	ACS, 2011-2015
	Percentage of population aged 25-64 who are employed	ACS, 2011-2015
	Median Household Income	ACS, 2011-2015
2	Education	
	Percentage of population over age 25 with a bachelor's education or higher	ACS, 2011-2015
	Percentage of 15-17-year-olds enrolled in school	ACS, 2011-2015
	Percentage of 3- and 4-year-olds enrolled in pre-school	ACS, 2011-2015
3	Social	
	Percentage of registered voters voting in the 2020 general election	UC Berkeley, 2012
	Percentage of family households with children under 18 with two parents	ACS, 2011-2015
4	Transportation	
	Percentage of households with access to an automobile	ACS, 2011-2015
	Percentage of workers (16 years and older) commuting by walking, cycling, or transit (excluding working from home)	ACS, 2011-2015
5	Healthcare Access	
	Percentage of adults aged 18 to 64 years currently insured	ACS, 2011-2015
6	Neighborhood	
	Percentage of the population living within ½ -mile of a park, beach, or open space greater than 1 acre	GreenInfo, 2012
	Population-weighted percentage of the census tract area with tree canopy	NLCD, 2011
	Percentage of the population residing within ¼ mile of an off-site sales alcohol outlet	ABC, 2014
	Percentage of the urban and small-town population residing less than 1/2 mile from a supermarket/large grocery store, and the percent of the rural population living less than 1 miles from a supermarket/large grocery store	USDA, 2015
	Combined employment density for retail, entertainment, supermarkets, and educational uses (jobs/acre)	USEPA, 2006-2010
7	Housing	
	Percentage of occupied housing units occupied by property owners	ACS, 2011-2015
	Percent of households with complete kitchen facilities and plumbing	CHAS, 2010-2014
	Percentage of low-income homeowners paying more than 50% of income on housing	CHAS, 2010-2014
	Percentage of low-income renter households paying more than 50% of income on housing	CHAS, 2010-2014
	Percentage of households with less or equal to 1 occupant per room	ACS, 2011-2015
8	Clean Environment	
	Annual average spatial distribution of gridded diesel PM emissions from on-road and non-road sources 2016 (tons/year).	CalEPA, 2012
	CalEnviroScreen 4.0 drinking water contaminant index for selected contaminants	CalEPA, 2015-2013
	Mean of summer months (May-October) of the daily maximum 8-hour ozone concentration (ppm), averaged over three years (2017 to 2019)	CalEPA, 2011-2013
	Annual mean concentration of PM2.5 (µg/m3) over three years (2015 to 2017).	CalEPA, 2012-2014

Note: Indicators are for the California Healthy Places Index (HPI) version 2.0, developed by the Public Health Alliance of Southern California. ABC is Alcoholic Beverage Commission. ACS is American Community Survey. CHAS is Comprehensive Housing Assessment System. CalEPA is California Environmental Protection Agency. GreenInfo is CaLANDS. NLCD is National Land Cover Database. USDA FARA is U.S. Department of Agriculture Food Access Research Atlas. USEPA is U.S. Environmental Protection Agency. LODES is LEHD Origin-Destination Employment Statistics. UC Berkeley is University of California, Berkeley.

Appendix A2. Map of statewide HPI 2.0 score percentile ranking of California census tracts.



Note: From the California Healthy Places Index (HPI), Public Health Alliance of Southern California (data) and Axis Maps (visualization), 2022 (<https://map.healthylplacesindex.org>). Copyright 2022 by Public Health Alliance of Southern California. Reprinted with permission.

Appendix A3. Detailed Background on the Blueprint for a Safer Economy

Within the Blueprint, there were three main equity-focused policy efforts, with each leveraging HPI as a structure to guide an equitable COVID-19 reopening and response. First, a tiered reopening framework that took effect on August 20, 2020 established benchmarks for counties to meet in order to safely “reopen the economy” (e.g., releasing restrictions that would allow for opening up businesses, schools, and other activities). The framework consisted of four tiers, and each week, each county would be assigned a tier that represented their transmission risk (spanning from widespread risk to minimal risk) which then corresponded with the level of reopening restrictions (see **table below**). Counties with 106,000 residents or more were assigned a tier each week based on test positivity and adjusted case thresholds. Rules for counties with fewer than 106,000 residents adjusted over time, mostly to consider and recognize how a small number of cases could result in large swings to case rates. Ultimately, these “small counties” were assigned a tier each week based on test positivity and case counts by population size (less than 35,000; 35,001 to 70,000; 70,001 to 106,000). In addition to “moving across tiers” when meeting tier-specific thresholds based on county population size, counties also had to meet an equity-focused benchmark.

This equity-focused benchmark was effective from October 6, 2020. Following extended engagement with stakeholders, the equity-focused benchmark was based on the Health Equity Metric (HEM, also the health equity quartile HPI), which was developed using HPI and calculated from the test positivity rates of the lowest quartile of the HPI for each county.¹ Use of the HEM aimed to ensure that the test positivity rate within a county’s most disadvantaged census tracts did not substantially trail the county’s overall test positivity rate. Specifically, within the tier framework, counties could not move to less restrictive tiers without HEM meeting certain thresholds, but they could also accelerate to a less restrictive tier if the HEM met thresholds for two tiers less restrictive. The equity metric was not considered for moving counties to more restrictive tiers.

A3 Table. Blueprint for a Safer Economy’s Tiered Reopening Framework by county size.

a. Large County Tier Framework (with 106,000 residents or more)

Higher Risk --> Lower Risk of Community Disease Transmission				
Measure	Tier 1 Widespread (Purple)	Tier 2 Substantial (Red)	Tier 3 Moderate (Orange)	Tier 4 Minimal (Yellow)
Adjusted case rate for tier assignment	>10	6-10	2-5.9	<2
Test Positivity	>8%	5-8%	2-4.9%	<2

Note: Adjusted case rate is the rate of 7-day average cases with 7-day lag per 100,000 population and excludes prison cases. Test positivity is percent of 7-day positive average over tests excluding prison cases.

b. Small County Tier Framework (with fewer than 106,000)

Higher Risk --> Lower Risk of Community Disease Transmission				
Case Count for Tier Assignment by County Population Size	Tier 1 Widespread (Purple)	Tier 2 Substantial (Red)	Tier 3 Moderate (Orange)	Tier 4 Minimal (Yellow)
Fewer than 35,000	≥35	14-34	7-13	<7
35,001-70,000	≥42	21-41	14-20	<14
70,001-106,000	≥49	28-48	21-27	<21
Test Positivity	>8%	5-8%	2-4.9%	<2%

Note: Test positivity is percent of 7-day positive average over tests excluding prison cases.

Second, targeted equity investment plans were crafted and implemented by county and city local health jurisdictions (LHJs) to describe how resources to mitigate COVID-19 disparities would be utilized. Though these plans were submitted to the state by October 20, 2020, their efforts were implemented over time and phased in.

Lastly, the vaccine equity allocation was later incorporated, taking effect on March 2, 2021, to guide vaccine allocation for the general population when effective vaccines became available. Similar to the HEM, once vaccines were made available, a Vaccine Equity Metric (VEM) was also created. However, the VEM differed from the HEM in that it measured vaccines administered (instead of test positivity) at zip code tabulation areas (ZCTA) with CDPH-derived ZCTA scores (instead of census tracts) and statewide HPI quartiles (instead of county-level HPI quartiles). After prioritizing equitable vaccine distribution, the tier reopening framework thresholds were modified to include two statewide VEM goals as shown in the table below:

Doses administered in the Vaccine Equity Quartile 1 statewide	Tier 1 Widespread (Purple)	Tier 2 Substantial (Red)	Tier 3 Moderate (Orange)	Tier 4 Minimal (Yellow)
< 2 million doses administered	Case Rate >7	Case Rate 4-7	Case Rate 1-3.9	Case Rate <1
Goal 1: 2 million doses administered	Case Rate >10	Case Rate 4-10	Case Rate 1-3.9	Case Rate <1
Goal 2: 4 million doses administered	Case Rate >10	Case Rate 6-10	Case Rate 2-5.9	Case Rate <2

Appendix B. Supplemental Results

Appendix B1. Summary statistics for tracts in California, large counties, and small counties by Health Equity Quartile (HEQ; within-county quartile 1) or non-HEQ (within-county quartiles 2-4)

	Tracts in California				Tracts in Large Counties				Tracts in Small Counties			
	Non-HEQ		HEQ		Non-HEQ		HEQ		Non-HEQ		HEQ	
	<i>N</i>	<i>Mean</i>	<i>N</i>	<i>Mean</i>	<i>N</i>	<i>Mean</i>	<i>N</i>	<i>Mean</i>	<i>N</i>	<i>Mean</i>	<i>N</i>	<i>Mean</i>
Population (2019)	5,824	5,008.87	1,969	4,884.81	5,679	5,021.08	1,910	4,905.98	145	4,530.59	59	4,199.31
Life expectancy at birth	5,801	81.02	1,966	78.05	5,661	81.07	1,907	78.08	140	79.23	59	77.34
Proportion 65 years or older	5,824	0.14	1,969	0.10	5,679	0.14	1,910	0.10	145	0.19	59	0.18
Proportion White	5,824	0.45	1,969	0.20	5,679	0.44	1,910	0.18	145	0.70	59	0.63
Proportion Black	5,824	0.05	1,969	0.08	5,679	0.05	1,910	0.08	145	0.01	59	0.02
Proportion Asian	5,824	0.15	1,969	0.10	5,679	0.15	1,910	0.11	145	0.03	59	0.03
Proportion Native American	5,824	0.00	1,969	0.00	5,679	0.00	1,910	0.00	145	0.02	59	0.03
Proportion Pacific Islander	5,824	0.00	1,969	0.00	5,679	0.00	1,910	0.00	145	0.00	59	0.00
Proportion Other race	5,824	0.00	1,969	0.00	5,679	0.00	1,910	0.00	145	0.00	59	0.00
Proportion Multiple races	5,824	0.03	1,969	0.02	5,679	0.03	1,910	0.02	145	0.03	59	0.04
Proportion Latino/a	5,824	0.32	1,969	0.58	5,679	0.32	1,910	0.60	145	0.20	59	0.25
<u>Economic</u>												
Proportion with an income exceeding 200% of federal poverty level	5,801	0.75	1,966	0.50	5,661	0.76	1,907	0.49	140	0.68	59	0.56
Proportion aged 25-64 who are employed	5,801	0.74	1,966	0.68	5,661	0.74	1,907	0.68	140	0.66	59	0.60
Per capita income	5,801	43,629.67	1,966	21,610.49	5,661	43,918.08	1,907	21,472.57	140	31,967.77	59	26,068.36
<u>Education</u>												
Proportion over age 25 with a bachelor's education or higher	5,801	0.39	1,966	0.16	5,661	0.39	1,907	0.16	140	0.23	59	0.17
Proportion of 15-17-year-olds enrolled in school	5,801	0.98	1,966	0.97	5,661	0.98	1,907	0.97	140	0.97	59	0.96
Proportion of 3- and 4-year-olds enrolled in pre-school	5,801	0.56	1,966	0.43	5,661	0.56	1,907	0.43	140	0.50	59	0.45
<u>Social</u>												
Proportion of households who completed census forms (2020)	5,801	0.73	1,966	0.63	5,661	0.73	1,907	0.63	140	0.60	59	0.55
Proportion of registered voters voting in the 2020 general election	5,801	0.81	1,966	0.68	5,661	0.81	1,907	0.68	140	0.81	59	0.77
<u>Transportation</u>												
Proportion of households with access to an automobile	5,801	0.95	1,966	0.88	5,661	0.95	1,907	0.88	140	0.96	59	0.92
Proportion of workers (16 years and older) commuting by walking, cycling, or transit (excluding working from home)	5,801	0.08	1,966	0.12	5,661	0.08	1,907	0.12	140	0.04	59	0.07

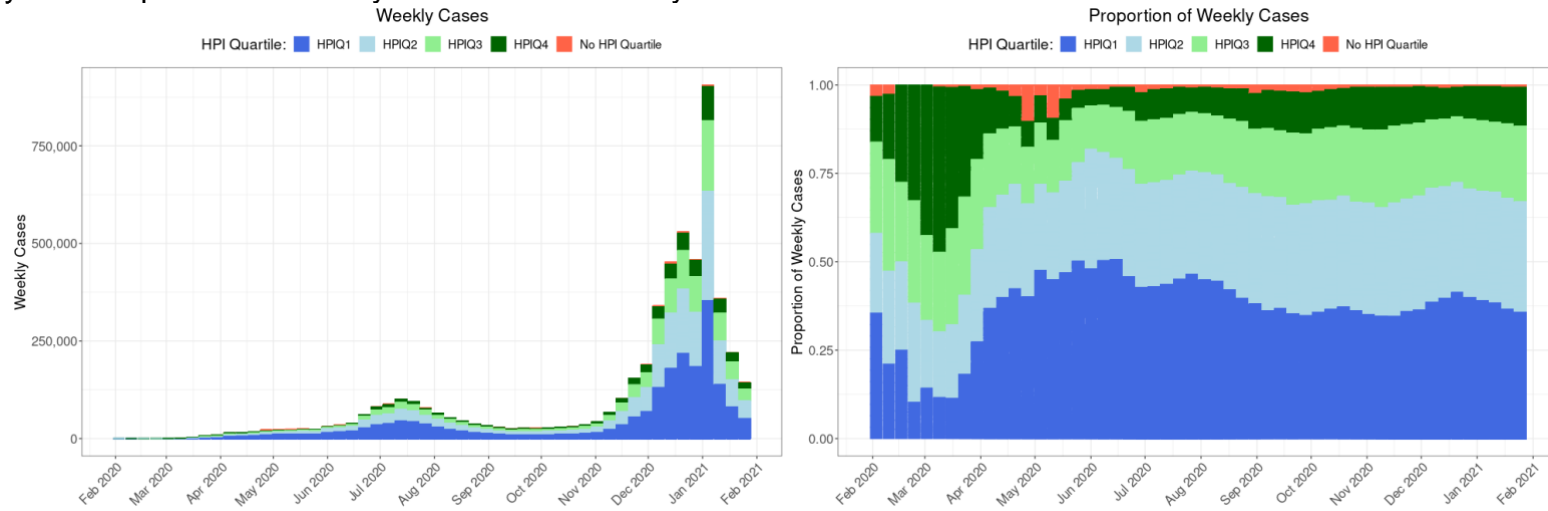
Healthcare Access												
Proportion of adults aged 18 to 64 years currently insured	5,801	0.92	1,966	0.82	5,661	0.92	1,907	0.82	140	0.90	59	0.88
Neighborhood												
Proportion living within ½ -mile of a park, beach, or open space >1 acre	5,801	0.77	1,966	0.76	5,661	0.78	1,907	0.77	140	0.48	59	0.61
Population-weighted percentage of the census tract area with tree canopy	5,801	0.09	1,966	0.06	5,661	0.08	1,907	0.06	140	0.24	59	0.22
Employment density (jobs/acre)	5,801	6.69	1,966	7.79	5,661	6.82	1,907	7.98	140	1.09	59	1.74
Housing												
Proportion of occupied housing units occupied by property owners	5,801	0.61	1,966	0.37	5,661	0.61	1,907	0.36	140	0.69	59	0.58
Proportion of households with complete kitchen facilities and plumbing	5,801	0.99	1,966	0.98	5,661	0.99	1,907	0.98	140	0.99	59	0.98
Proportion of low-income homeowners paying >50% income on housing	5,801	0.11	1,966	0.16	5,661	0.11	1,907	0.16	140	0.10	59	0.11
Proportion of low-income renter households paying >50% income on housing	5,801	0.23	1,966	0.32	5,661	0.23	1,907	0.32	140	0.22	59	0.27
Proportion of households with less or equal to 1 occupant per room	5,801	0.94	1,966	0.82	5,661	0.94	1,907	0.82	140	0.96	59	0.95
Clean Environment												
Annual average spatial distribution of gridded diesel PM emissions from on-road and non-road sources 2016 (tons/year)	5,801	0.19	1,966	0.31	5,661	0.20	1,907	0.32	140	0.04	59	0.07
Drinking water contaminant index for selected contaminants (CalEnviroScreen 4.0)	5,801	475.91	1,966	481.64	5,661	477.39	1,907	483.21	140	415.91	59	430.99
Mean of summer months (May-October) of the daily max 8-hour ozone concentration (ppm), averaged over 2017 to 2019	5,801	0.05	1,966	0.05	5,661	0.05	1,907	0.05	140	0.05	59	0.05
Annual mean concentration of PM2.5 (µg/m3) over three years (2015-17)	5,801	10.13	1,966	10.32	5,661	10.22	1,907	10.44	140	6.52	59	6.50

Appendix B2. Summary of statewide HPI quartiles and COVID-19 outcomes by California county and county size.

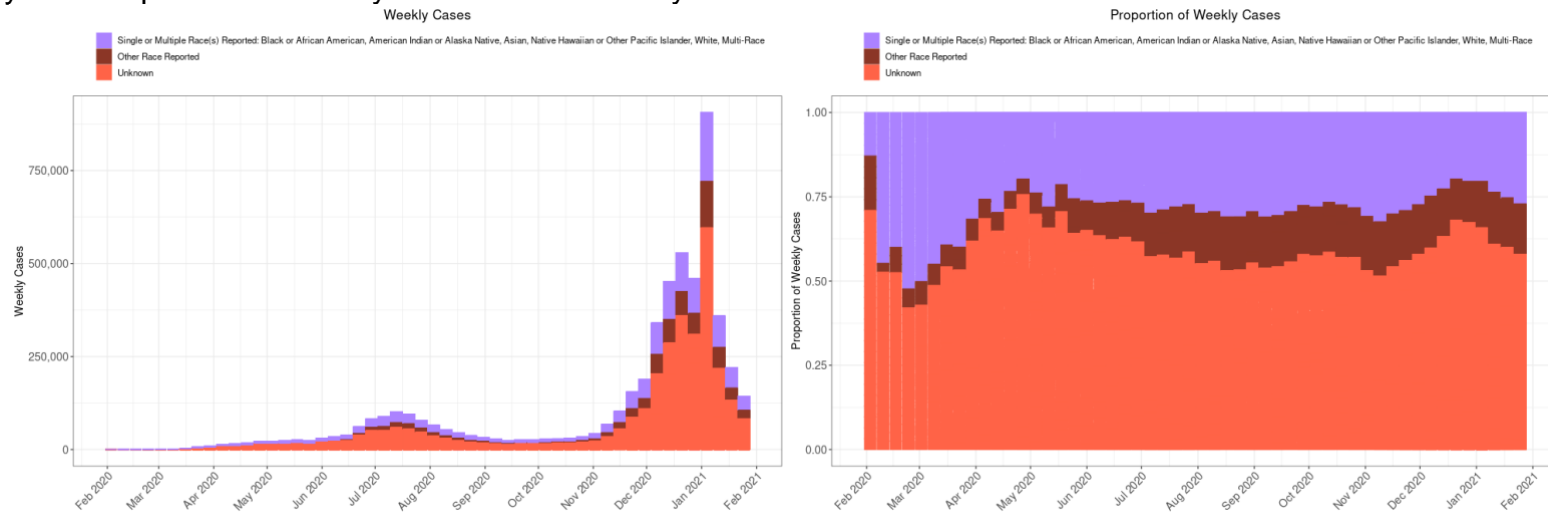
County	Number of CTs	Population (2019 ACS 5-year)	Number of CTs w/o HPI score	Row %	Number of CTs with HPI score		Number of CTs in HPIq1		Number of CTs in HPIq2		Number of CTs in HPIq3		Number of CTs in HPIq4		Tests conducted	Positives	Cases reported	Deaths reported	Tests per 100k county pop.	Test Positivity Rate (%)	Cases per 100k county pop.	Deaths per 100k county pop.
					Row %	Row %	Row %	Row %	Row %	Row %												
All Counties	8,057	39,283,497	264	3.3	7,793	96.7	1,949	24.2	1,948	24.2	1,948	24.2	1,948	24.2	37,344,862	3,598,586	3,127,040	54,266	96,274.9	9.6	8,061.5	139.9
Large Counties	7,839	38,352,825	250	3.2	7,589	96.8	1,905	24.3	1,863	23.8	1,885	24.0	1,936	24.7	36,765,826	3,552,830	3,083,629	53,627				
Alameda	361	1,656,754	9	2.5	352	97.5	28	7.8	66	18.3	91	25.2	167	46.3	1,491,216	81,141	71,692	1,257	91,059.4	5.4	4,377.8	76.8
Butte	51	225,817	0	0.0	51	100.0	14	27.5	19	37.3	16	31.4	2	3.9	136,281	9,938	9,798	194	60,350.2	7.3	4,338.9	85.9
Contra Costa	208	1,142,251	4	1.9	204	98.1	16	7.7	30	14.4	51	24.5	107	51.4	979,134	60,897	56,904	774	86,007.8	6.2	4,998.5	68.0
El Dorado	43	188,563	3	7.0	40	93.0	0	0.0	12	27.9	15	34.9	13	30.2	103,434	7,242	7,468	109	55,141.3	7.0	3,981.2	58.1
Fresno	199	984,521	7	3.5	192	96.5	108	54.3	35	17.6	40	20.1	9	4.5	707,003	93,714	82,116	1,579	72,866.8	13.3	8,463.2	162.7
Humboldt	31	135,940	2	6.5	29	93.5	4	12.9	11	35.5	14	45.2	0	0.0	79,009	2,519	2,447	30	58,690.4	3.2	1,817.7	22.3
Imperial	31	180,701	5	16.1	26	83.9	16	51.6	5	16.1	3	9.7	2	6.5	144,082	24,447	22,533	690	85,410.8	17.0	13,357.4	409.0
Kern	151	887,641	10	6.6	141	93.4	75	49.7	34	22.5	23	15.2	9	6.0	571,342	86,516	77,414	1,115	66,622.1	15.1	9,027.0	130.0
Kings	27	150,691	2	7.4	25	92.6	15	55.6	7	25.9	3	11.1	0	0.0	143,280	14,930	12,960	192	103,314.0	10.4	9,345.0	138.4
Los Angeles	2,346	10,081,570	85	3.6	2,261	96.4	770	32.8	613	26.1	487	20.8	391	16.7	13,213,737	1,359,076	1,093,882	20,757	132,648.2	10.3	10,981.1	208.4
Madera	23	155,433	2	8.7	21	91.3	9	39.1	8	34.8	4	17.4	0	0.0	86,072	12,175	11,419	164	59,182.0	14.1	7,851.6	112.8
Marin	56	259,943	3	5.4	53	94.6	0	0.0	2	3.6	7	12.5	44	78.6	287,496	10,619	9,811	204	112,276.8	3.7	3,831.5	79.7
Merced	49	271,382	0	0.0	49	100.0	36	73.5	11	22.4	2	4.1	0	0.0	222,004	25,277	24,357	362	81,805.0	11.4	8,975.2	133.4
Monterey	94	433,410	6	6.4	88	93.6	18	19.1	29	30.9	26	27.7	15	16.0	333,805	36,853	33,310	447	79,716.7	11.0	7,954.8	106.7
Napa	40	139,623	3	7.5	37	92.5	0	0.0	6	15.0	19	47.5	12	30.0	167,072	8,479	8,103	73	122,204.6	5.1	5,926.9	53.4
Orange	583	3,168,044	11	1.9	572	98.1	58	9.9	141	24.2	156	26.8	217	37.2	2,196,789	260,200	220,155	4,473	69,603.6	11.8	6,975.4	141.7
Placer	85	385,512	6	7.1	79	92.9	2	2.4	11	12.9	31	36.5	35	41.2	230,101	18,289	17,948	269	60,247.9	7.9	4,699.4	70.4
Riverside	453	2,411,439	11	2.4	442	97.6	160	35.3	153	33.8	105	23.2	24	5.3	1,931,059	291,693	252,762	3,715	80,995.3	15.1	10,601.7	155.8
Sacramento	317	1,524,553	10	3.2	307	96.8	65	20.5	93	29.3	92	29.0	57	18.0	1,061,886	90,101	82,548	1,633	70,474.8	8.5	5,478.5	108.4
San Bernardino	369	2,149,031	10	2.7	359	97.3	163	44.2	105	28.5	66	17.9	25	6.8	1,897,348	295,600	253,715	4,670	89,931.3	15.6	12,025.7	221.4
San Diego	628	3,316,073	12	1.9	616	98.1	107	17.0	154	24.5	183	29.1	172	27.4	2,415,924	201,819	228,341	2,891	73,478.6	8.4	6,944.8	87.9
San Francisco	197	874,961	8	4.1	189	95.9	18	9.1	13	6.6	46	23.4	112	56.9	1,215,439	38,661	31,073	462	139,933.2	3.2	3,577.4	53.2
San Joaquin	139	742,603	1	0.7	138	99.3	53	38.1	48	34.5	31	22.3	6	4.3	527,440	65,247	58,178	1,343	71,423.0	12.4	7,878.1	181.9
San Luis Obispo	54	282,165	6	11.1	48	88.9	1	1.9	8	14.8	27	50.0	12	22.2	244,507	14,635	14,053	217	92,441.2	6.0	5,313.0	82.0
San Mateo	158	767,423	2	1.3	156	98.7	0	0.0	13	8.2	22	13.9	121	76.6	907,905	43,705	35,783	476	118,305.7	4.8	4,662.7	62.0
Santa Barbara	90	444,829	7	7.8	83	92.2	15	16.7	9	10.0	26	28.9	33	36.7	362,368	29,675	26,801	391	84,651.0	8.2	6,260.8	91.3
Santa Clara	372	1,927,470	7	1.9	365	98.1	12	3.2	54	14.5	87	23.4	212	57.0	2,196,056	108,938	98,712	1,534	114,717.2	5.0	5,156.5	80.1
Santa Cruz	53	273,962	2	3.8	51	96.2	3	5.7	9	17.0	20	37.7	19	35.8	238,360	13,763	13,704	197	90,467.4	5.8	5,201.2	74.8
Shasta	48	179,212	2	4.2	46	95.8	8	16.7	21	43.8	15	31.3	2	4.2	110,865	6,898	9,139	171	62,968.2	6.2	5,190.7	97.1
Solano	96	441,829	3	3.1	93	96.9	20	20.8	23	24.0	31	32.3	19	19.8	352,971	25,692	25,229	244	81,297.7	7.3	5,810.8	56.2
Sonoma	100	499,772	1	1.0	99	99.0	0	0.0	21	21.0	51	51.0	27	27.0	392,990	26,332	24,557	368	78,633.9	6.7	4,913.6	73.6
Stanislaus	94	543,194	0	0.0	94	100.0	43	45.7	35	37.2	16	17.0	0	0.0	393,875	50,065	45,408	818	72,510.9	12.7	8,359.4	150.6
Tulare	78	461,898	2	2.6	76	97.4	48	61.5	19	24.4	9	11.5	0	0.0	358,306	45,358	41,269	768	77,880.6	12.7	8,970.1	166.9
Ventura	174	847,263	7	4.0	167	96.0	17	9.8	34	19.5	56	32.2	60	34.5	896,754	81,215	68,771	835	106,447.2	9.1	8,163.3	99.1
Yolo	41	217,352	1	2.4	40	97.6	3	7.3	11	26.8	14	34.1	12	29.3	169,916	11,121	11,269	205	81,398.4	6.5	5,398.4	98.2
Small Counties	218	930,672	14	6.4	204	93.6	44	20.2	85	39.0	63	28.9	12	5.5	579,036	45,756	43,411	639				
70,001 - 106,000																						
Mendocino	21	87,224	1	4.8	20	95.2	4	19.0	9	42.9	6	28.6	1	4.8	55,931	2,885	2,828	32	63,504.3	5.2	3,242.2	36.7
Nevada	20	99,244	0	0.0	20	100.0	0	0.0	5	25.0	10	50.0	5	25.0	63,474	3,083	3,290	79	63,957.5	4.9	3,315.1	79.6
Sutter	21	96,109	0	0.0	21	100.0	6	28.6	7	33.3	8	38.1	0	0.0	70,611	8,921	8,056	111	73,469.7	12.6	8,382.1	115.5
Yuba	14	76,360	0	0.0	14	100.0	8	57.1	4	28.6	2	14.3	0	0.0	44,249	5,342	4,788	48	57,947.9	12.1	6,270.3	62.9
35,001 - 70,000																						
Amador	9	38,429	1	11.1	8	88.9	0	0.0	2	22.2	6	66.7	0	0.0	24,587	1,335	1,205	44	73,781.7	5.4	3,616.0	132.0
Calaveras	10	45,514	1	10.0	9	90.0	2	20.0	4	40.0	3	30.0	0	0.0	18,760	1,305	1,214	24	41,636.1	7.0	2,694.4	53.3
Lake	15	64,195	0	0.0	15	100.0	8	53.3	6	40.0	1	6.7	0	0.0	37,586	2,785	2,486	54	58,549.7	7.4	3,872.6	84.1
San Benito	11	60,376	0	0.0	11	100.0	0	0.0	4	36.4	5	45.5	2	18.2	53,548	5,563	4,981	49	88,690.9	10.4	8,250.0	81.2
Siskiyou	14	43,468	3	21.4	11	78.6	3	21.4	7	50.0	1	7.1	0	0.0	17,051	933	912	8	42,127.2	5.5	2,253.2	19.8
Tehama	11	63,912	0	0.0	11	100.0	2	18.2	8	72.7	1	9.1	0	0.0	37,890	3,768	3,986	57	59,284.6	9.9	6,236.7	89.2
Tuolumne	11	54,045	1	9.1	10	90.9	0	0.0	4	36.4	6	54.5	0	0.0	39,403	2,270						

Appendix B3. Using HPI at census tract level provided useful information for prioritizing populations: Weekly cases, hospitalizations, and deaths by HPI quartiles and race groups from case surveillance

a. Frequency and Proportion of Weekly COVID-19 Cases by HPI Quartiles

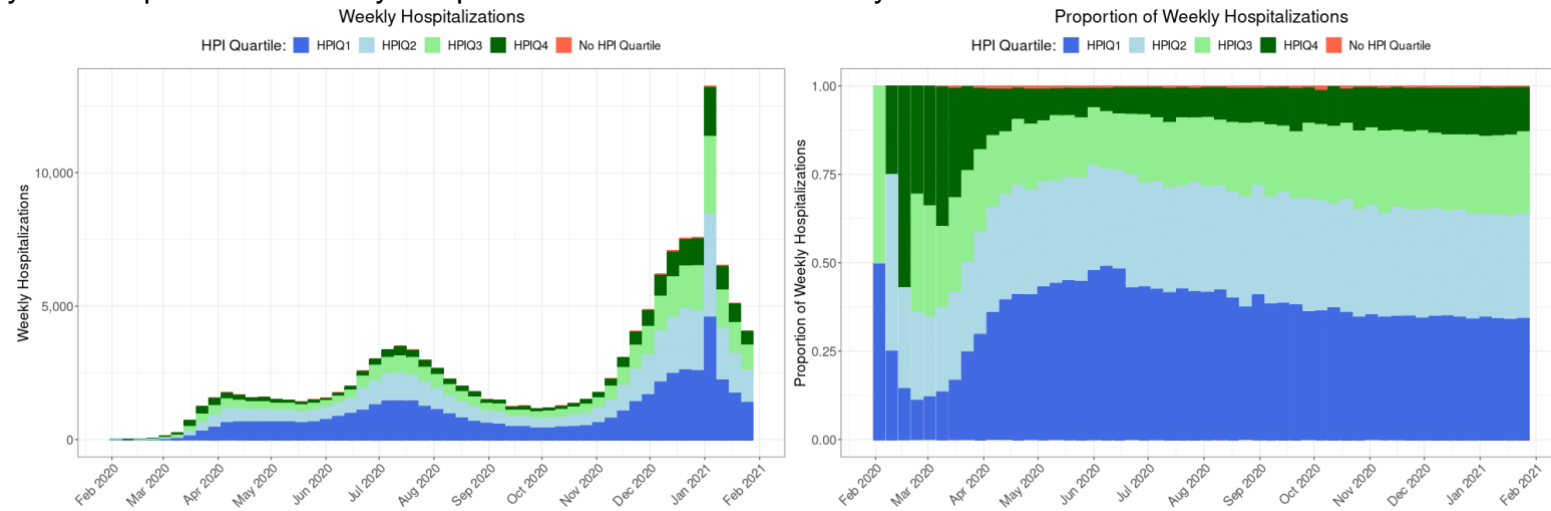


b. Frequency and Proportion of Weekly COVID-19 Cases by Race

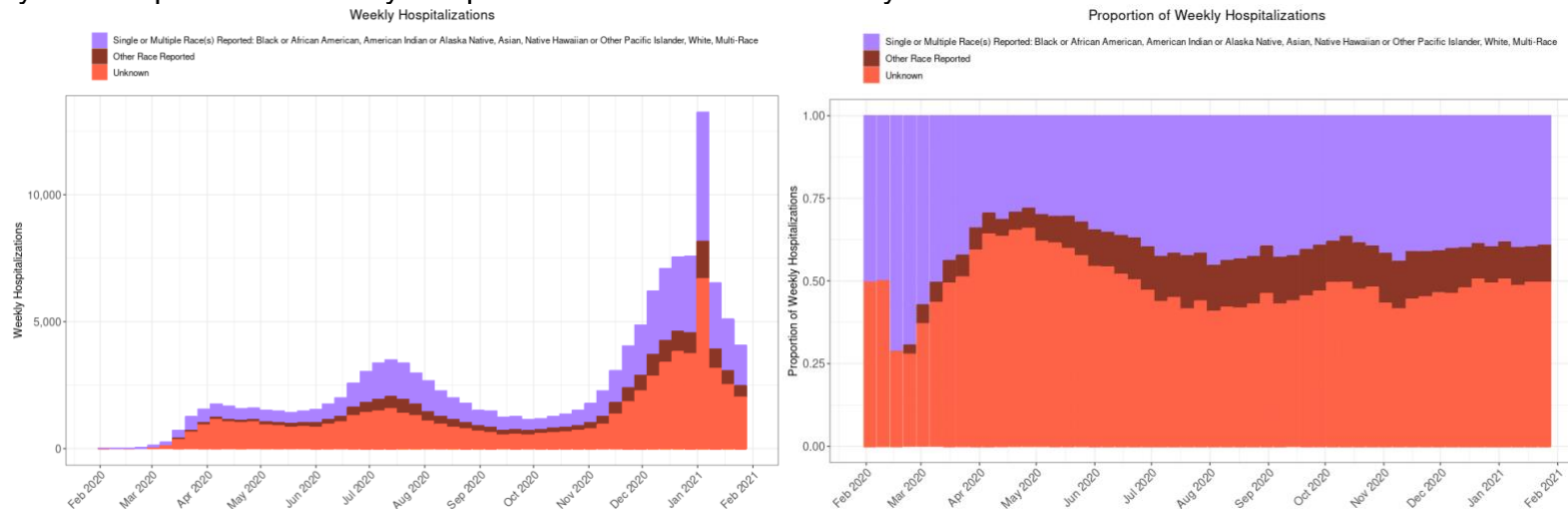


Note: HPI is California Healthy Places index (version 2.0). Race groups are self-reported at point-of-testing and derived from CDPH surveillance data. Ethnicity is not included in race groups listed. Race group of "other" refers to those who do not fall under any listed race group. Race group of "unknown" includes those who declined to state or whose race information is missing.

c. Frequency and Proportion of Weekly Hospitalizations with COVID-19 by HPI Quartiles

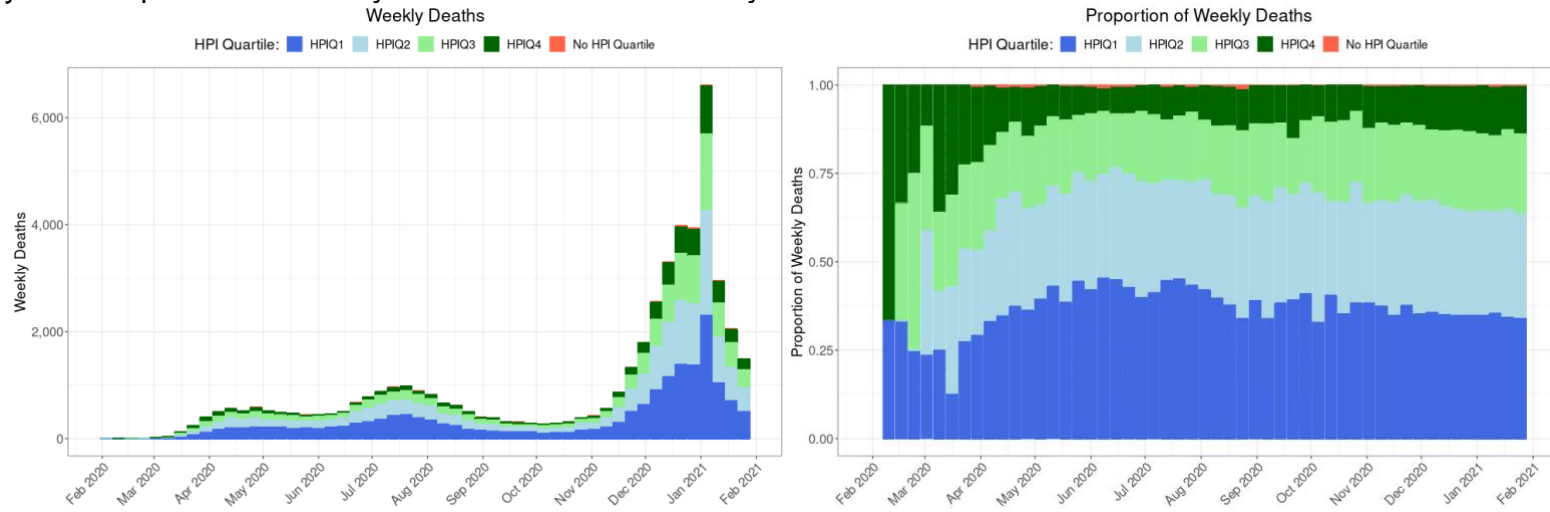


d. Frequency and Proportion of Weekly Hospitalizations with COVID-19 by Race

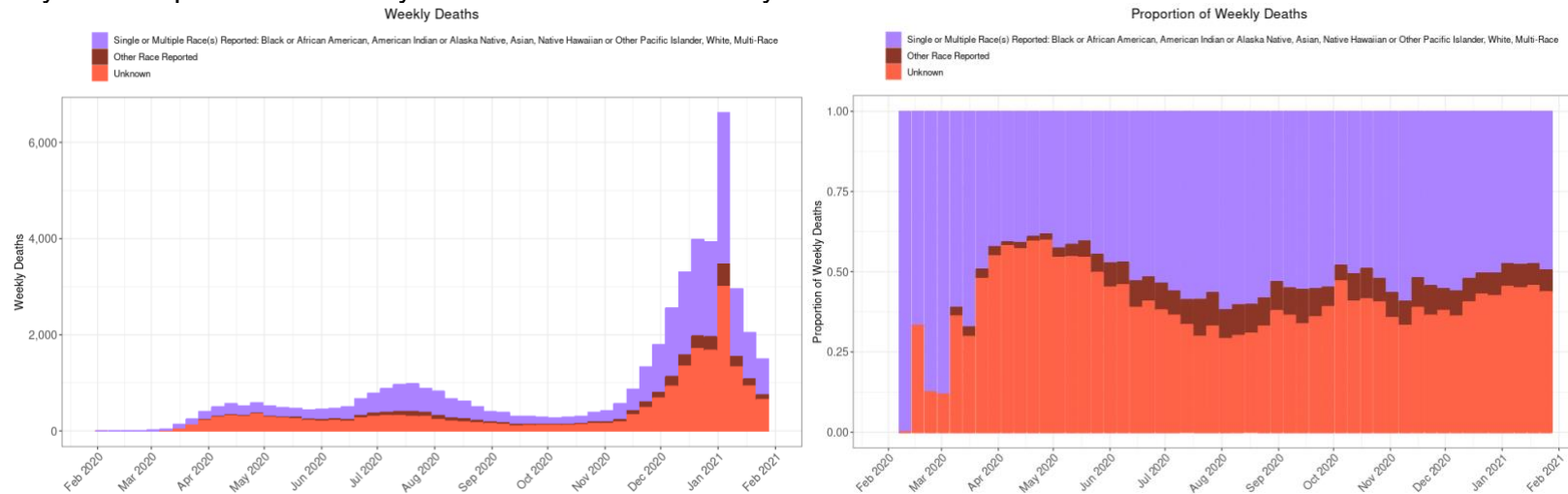


Note: HPI is California Healthy Places index (version 2.0). Race groups are self-reported at point-of-testing and derived from CDPH surveillance data. Ethnicity is not included in race groups listed. Race group of “other” refers to those who do not fall under any listed race group. Race group of “unknown” includes those who declined to state or whose race information is missing.

e. Frequency and Proportion of Weekly Deaths with COVID-19 by HPI Quartiles

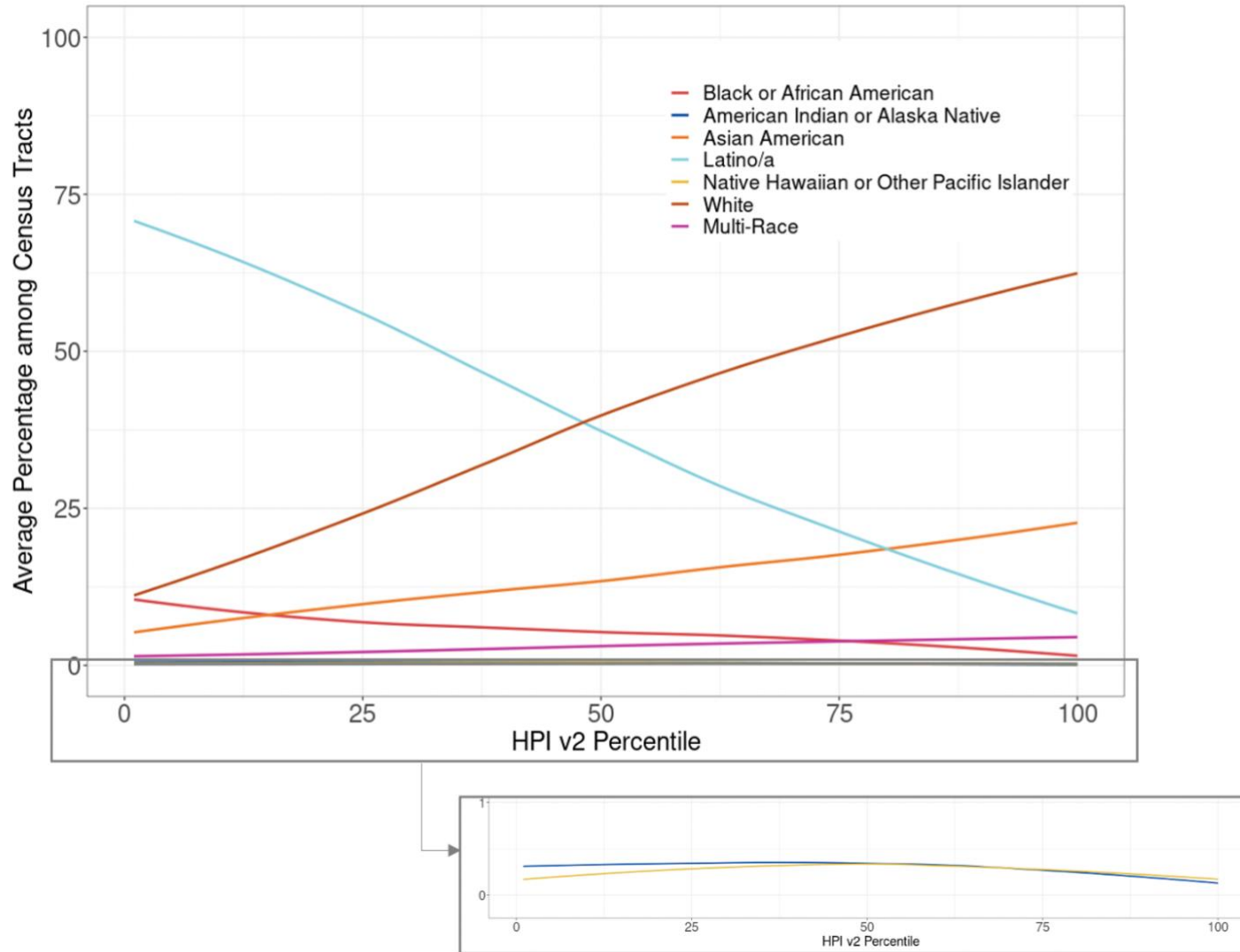


f. Frequency and Proportion of Weekly Deaths with COVID-19 by Race



Note: HPI is California Healthy Places index (version 2.0). Race groups are self-reported at point-of-testing and derived from CDPH surveillance data. Ethnicity is not included in race groups listed. Race group of “other” refers to those who do not fall under any listed race group. Race group of “unknown” includes those who declined to state or whose race information is missing.

Appendix B4. Average population percentage comprised of different race/ethnicity groups by HPI percentile among census tracts.



Note: Percentage of population by race/ethnicity groups at census tract level are 2019 ACS 5-year population estimates. The bottom box expands the visual field for the average population percentage comprised of two groups: (1) American Indian or Alaska Native, and (2) Native Hawaiian or Other Pacific Islander.

Appendix B5. Monthly test, case, and death rate ratio (RR) results

Month	HPI		Monthly Tests		Monthly Cases		Monthly Deaths		KEY
	Quartile		RR	95% CI	RR	95% CI	RR	95% CI	
Feb 2020	Q4	(Ref)	1.00		1.00		1.00		<1.00
	Q1		0.95	(0.80, 1.13)	0.45	(0.34, 0.61)	0.00	(0.00, 0.00)	1.00
	Q2		0.93	(0.79, 1.10)	0.65	(0.50, 0.84)	0.00	(0.00, 0.00)	>2.00
	Q3		1.17	(1.00, 1.37)	0.69	(0.54, 0.89)	2.89	(0.30, 27.77)	>3.00
Mar 2020	Q4	(Ref)	1.00		1.00		1.00		>4.00
	Q1		0.54	(0.54, 0.55)	0.75	(0.72, 0.78)	0.56	(0.40, 0.79)	>5.00
	Q2		0.68	(0.67, 0.69)	0.81	(0.78, 0.84)	0.72	(0.52, 0.99)	
	Q3		0.82	(0.81, 0.83)	0.86	(0.83, 0.90)	0.78	(0.57, 1.06)	
Apr 2020	Q4	(Ref)	1.00		1.00		1.00		
	Q1		1.07	(1.06, 1.08)	4.03	(3.90, 4.16)	2.40	(2.09, 2.75)	
	Q2		1.04	(1.04, 1.05)	2.64	(2.55, 2.73)	1.99	(1.73, 2.29)	
	Q3		1.00	(0.99, 1.01)	1.65	(1.59, 1.71)	1.53	(1.32, 1.77)	
May 2020	Q4	(Ref)	1.00		1.00		1.00		
	Q1		1.14	(1.13, 1.14)	6.61	(6.41, 6.81)	3.93	(3.42, 4.52)	
	Q2		1.08	(1.08, 1.09)	3.98	(3.85, 4.11)	2.41	(2.08, 2.79)	
	Q3		1.04	(1.04, 1.05)	2.16	(2.09, 2.24)	1.96	(1.69, 2.28)	
Jun 2020	Q4	(Ref)	1.00		1.00		1.00		
	Q1		1.10	(1.09, 1.10)	4.73	(4.65, 4.82)	5.06	(4.34, 5.91)	
	Q2		1.05	(1.05, 1.05)	3.15	(3.10, 3.21)	3.58	(3.06, 4.20)	
	Q3		0.99	(0.99, 0.99)	1.90	(1.86, 1.93)	2.11	(1.78, 2.51)	
Jul 2020	Q4	(Ref)	1.00	(1.00, 1.00)	1.00	(0.98, 1.02)	1.00	(0.86, 1.16)	
	Q1		1.16	(1.16, 1.17)	4.29	(4.23, 4.35)	5.32	(4.73, 5.99)	
	Q2		1.10	(1.10, 1.11)	2.91	(2.87, 2.95)	3.60	(3.19, 4.06)	
	Q3		1.02	(1.02, 1.03)	1.83	(1.80, 1.86)	2.14	(1.88, 2.44)	
Aug 2020	Q4	(Ref)	1.00		1.00	(0.98, 1.02)	1.00	(0.87, 1.15)	
	Q1		1.00	(1.00, 1.01)	3.85	(3.78, 3.92)	4.02	(3.60, 4.48)	
	Q2		0.99	(0.98, 0.99)	2.80	(2.74, 2.85)	3.03	(2.71, 3.38)	
	Q3		0.95	(0.95, 0.96)	1.75	(1.72, 1.79)	2.04	(1.82, 2.30)	
Sep 2020	Q4	(Ref)	1.00		1.00	(0.97, 1.03)	1.00	(0.85, 1.18)	
	Q1		0.85	(0.85, 0.85)	2.73	(2.67, 2.79)	3.25	(2.85, 3.71)	
	Q2		0.91	(0.90, 0.91)	2.37	(2.32, 2.43)	2.68	(2.34, 3.07)	
	Q3		0.93	(0.93, 0.94)	1.60	(1.56, 1.64)	1.64	(1.41, 1.89)	
Oct 2020	Q4	(Ref)	1.00	(1.00, 1.00)	1.00	(0.98, 1.02)	1.00	(0.83, 1.21)	
	Q1		0.79	(0.79, 0.79)	2.81	(2.76, 2.86)	3.04	(2.60, 3.54)	
	Q2		0.86	(0.86, 0.87)	2.36	(2.32, 2.41)	2.56	(2.19, 3.00)	
	Q3		0.92	(0.91, 0.92)	1.65	(1.62, 1.69)	1.69	(1.43, 2.00)	
Nov 2020	Q4	(Ref)	1.00	(1.00, 1.00)	1.00	(0.99, 1.01)	1.00	(0.86, 1.17)	
	Q1		0.83	(0.82, 0.83)	2.59	(2.56, 2.62)	3.26	(2.87, 3.69)	
	Q2		0.90	(0.90, 0.90)	2.28	(2.25, 2.30)	2.76	(2.44, 3.14)	
	Q3		0.93	(0.93, 0.93)	1.64	(1.62, 1.66)	1.93	(1.69, 2.21)	
Dec 2020	Q4	(Ref)	1.00	(1.00, 1.00)	1.00	(0.99, 1.01)	1.00	(0.93, 1.07)	
	Q1		1.13	(1.13, 1.13)	3.16	(3.14, 3.18)	3.03	(2.86, 3.21)	
	Q2		1.11	(1.11, 1.11)	2.58	(2.56, 2.60)	2.54	(2.39, 2.70)	
	Q3		1.03	(1.02, 1.03)	1.76	(1.75, 1.77)	1.78	(1.68, 1.90)	
Jan 2021	Q4	(Ref)	1.00	(1.00, 1.00)	1.00	(0.99, 1.01)	1.00	(0.95, 1.06)	
	Q1		1.13	(1.13, 1.13)	2.79	(2.77, 2.81)	2.77	(2.64, 2.90)	
	Q2		1.10	(1.09, 1.10)	2.33	(2.31, 2.35)	2.21	(2.11, 2.32)	
	Q3		1.04	(1.03, 1.04)	1.68	(1.67, 1.69)	1.65	(1.57, 1.74)	

Appendix References

1. California Department of Public Health. Blueprint for a Safer Economy. Published 2021. Accessed July 15, 2023. <https://www.cdph.ca.gov/Programs/CID/DCDC/Pages/COVID-19/COVID19CountyMonitoringOverview.aspx>