

Supplementary 1

Corey Scholes,

Chief Science Officer, EBM Analytics

2024-Jun-12

Table of contents

1. Introduction.....	2
2. Analysis Methods.....	2
2.1 Reporting.....	2
2.2 Data Import and Preparation.....	3
2.3 Record [6] Participants.....	3
2.4 Record [7] Variables.....	5
2.5 Record [8] Data sources.....	7
2.6 Record [9] Bias.....	7
2.7 Record [10] Sample size.....	9
2.8 Record [11] Quantitative variables.....	9
2.9 Record [12] Statistical methods.....	9
3. Analysis Results.....	11
3.1 Record [13] Participants.....	11
3.2 Record [14] Patient and record characteristics.....	13
3.3 Record [15] Outcomes.....	17
3.4 Record [16] Main results.....	21
3.5 Record [17] Sensitivity analyses.....	22
4. Export Files.....	24
5. References.....	24

Stage 2a IDEAL evaluation of a third-generation biocomposite suture anchor in arthroscopic rotator cuff repair: Subgroup cohort analysis of the PRULO registry with 12-month follow up

C Scholes, M Fatima, C Moody, K Eng, Richard S Page

1. Introduction

This analysis links to the manuscript of the Healix BR product as one of two companion publications assessing new-to-market hardware. The dataset is derived from the PRULO registry snapshot and live tables. A protocol has been previously prepared for the registry (Scholes et al. 2023).

1.0.1 Preparation

Load up required packages in advance. Citations applied to each library at first use in the text.

1. Load required packages
2. Check if packages are installed, if not, install them

1.0.2 Aim

To describe the clinical and patient-reported outcomes, in patients presenting for surgical review of shoulder pathology and electing to undergo reconstruction or repair of soft-tissue structures with a biodegradable anchor (Healix Advance BR, Depuy-Mitek, USA), at a regional orthopaedic clinic between 2020 - 2024.

1.0.3 Hypothesis

No hypotheses have been constructed for this case series.

2. Analysis Methods

2.1 Reporting

The study was reported according to the RECORD guidelines (Benchimol et al. 2015) and companion checklist.

The analysis was conducted in RStudio IDE (version) using *Rbase* (2023) and associated packages to perform the following;

- Data import and preparation
- Sample selection
- Describe missingness
- Data manipulation and analysis of;

Stage 2a IDEAL evaluation of a third-generation biocomposite suture anchor in arthroscopic rotator cuff repair: Subgroup cohort analysis of the PRULO registry with 12-month follow up

C Scholes, M Fatima, C Moody, K Eng, Richard S Page

- Patient characteristics
- Pathology characteristics
- Management and surgical technique
- Treatment and repair survival
- Adverse events and complications
- Patient reported outcomes
 - QDASH
 - WORC Index (Normalised)

2.1.1 RECORD [4] - Study Design

Subgroup analysis of a clinical registry embedded into private practice. Observational, cohort design.

2.2 Data Import and Preparation

Retrieve and format data from live tables and registry snapshot. Using *openxlsx* (Barbone and Garbuszus 2024) to retrieve static snapshot files and *googlesheets4* (Bryan 2023) to retrieve live database tables. Text and code output were integrated using the *epoxy* package (Aden-Buie 2023).

Read in live tables

Combine dataframes into one to conduct analysis using *tidyverse* (Wickham et al. 2019).

2.2.1 RECORD [5] - Setting

The PRULO registry is based in a regional private practice for upper limb orthopaedics.

The registry has 2679 treatment records with the first patient enrolled 13 October 2020 and the final treatment record created 22 March 2024. The registry snapshot was extracted on 26 March 2024. Patients are followed for up to 2 years after surgery to capture treatment outcomes and patient-reported outcome measures (PROMs).

2.3 Record [6] Participants

2.3.1 Record [6.1] Sample selection

Identify cases receiving the suture of interest. Cases were identified by SKUs identified from the [SKU database](#) maintained as part of implant tracking within the registry. Cases were not restricted by available follow up.

Stage 2a IDEAL evaluation of a third-generation biocomposite suture anchor in arthroscopic rotator cuff repair: Subgroup cohort analysis of the PRULO registry with 12-month follow up

C Scholes, M Fatima, C Moody, K Eng, Richard S Page

Inclusion criteria;

- Case involves anchor of interest
- Case is the index procedure within the registry (first use of suture)
- Patient has not withdrawn consent for inclusion of data in the registry
- Treatment record is eligible for surgery (it has occurred)

Data manipulation (add columns and filter tables based on column values) was performed with *tidyverse* and conversion to display format using *gt* (Iannone et al. 2024).

Table 1: Summary of SKUs (Reference) used to identify cases of interest from PRULO registry

Size (mm)	Description	Category	Reference
4.5	Healix Advance BR OrthoCord	Anchor + Suture	10886705021314
4.5	Healix Advance BR 3 strand Orthocord	Anchor + Suture	10886705021321
5.5	Healix Advance BR OrthoCord	Anchor + Suture	10886705021338
5.5	Healix Advance BR 3 strand Orthocord	Anchor + Suture	10886705021345
6.5	Healix Advance BR OrthoCord	Anchor + Suture	10886705021369
6.5	Healix Advance BR 3 strand Orthocord	Anchor + Suture	10886705021376
4.5	Healix Advance BR PermaCord	Anchor + Suture	10886705024803
4.5	Healix Advance BR 3 strand PermaCord	Anchor + Suture	10886705024735
5.5	Healix Advance BR PermaCord	Anchor + Suture	10886705024810
5.5	Healix Advance BR 3 strand PermaCord	Anchor + Suture	10886705024827
6.5	Healix Advance BR PermaCord	Anchor + Suture	10886705024834
6.5	Healix Advance BR 3 strand PermaCord	Anchor + Suture	10886705024681
4.5	Healix Advance BR PermaTape (Blue)	Anchor + Tape	10886705027798
4.5	Healix Advance BR PermaTape (White/Blue)	Anchor + Tape	10886705027804

Stage 2a IDEAL evaluation of a third-generation biocomposite suture anchor in arthroscopic rotator cuff repair: Subgroup cohort analysis of the PRULO registry with 12-month follow up

Size (mm)	Description	Category	Reference
5.5	Healix Advance BR PermaTape (Blue)	Anchor + Tape	10886705027811
5.5	Healix Advance BR PermaTape (White/Blue)	Anchor + Tape	10886705027828
6.5	Healix Advance BR PermaTape (Blue)	Anchor + Tape	10886705029266
6.5	Healix Advance BR PermaTape (White/Blue)	Anchor + Tape	10886705029273
4.5	Healix Advance BR Dynacord (x2) with Needles	Anchor + Suture	10886705029440
4.5	Healix Advance BR Dynacord (x2)	Anchor + Suture	10886705029402
4.5	Healix Advance BR Dynacord (x3)	Anchor + Suture	10886705029396
5.5	Healix Advance BR Dynacord (x2)	Anchor + Suture	10886705029464
5.5	Healix Advance BR Dynacord (x3)	Anchor + Suture	10886705029457
5.5	Healix Advance BR Dynacord (x2) with Needles	Anchor + Suture	10886705029471
6.5	Healix Advance BR Dynacord (x2)	Anchor + Suture	10886705029525
6.5	Healix Advance BR Dynacord (x3)	Anchor + Suture	10886705029518
6.5	Healix Advance BR Dynacord (x2) with Needles	Anchor + Suture	10886705029532

Of the 69 records in the mastersheet, 0 treatment records had withdrawn consent for data inclusion and 1 had declined to participate in PROMs.

2.3.2 Record [6.2] Algorithm validation

Record selection code was cross-checked by manual record checking within the registry snapshot for a subset (N = 10) of cases.

2.3.3 Record [6.3] Data linkage

No data linkage was utilised for this analysis.

Stage 2a IDEAL evaluation of a third-generation biocomposite suture anchor in arthroscopic rotator cuff repair: Subgroup cohort analysis of the PRULO registry with 12-month follow up

2.4 Record [7] Variables

Key variables defined as part of this analysis are summarised in Table 2 below.

Table 2: Summary of key variable definitions in the analysis

Category	Variable	Comments	Citation
Patient Characteristics	Insurance Status	Recode from account data from practice management system to insurance status	
Pathology	CuffRetraction	Defined as per <i>modified</i> Patte grading	(Lädermann et al. 2016)
	CuffCondition	Fatty infiltration as assessed by Goutallier scale	(Fuchs et al. 1999)
	TearPattern	Shape the tear makes within the margins of the cuff as viewed in the transverse plane	(Lädermann et al. 2016)
	OtherShoulderPathology	Free-text coded as present [Yes] or not [No]	
Management - Surgery	RepairAugment	Techniques used to augment the repair	
	CuffTension	Surgeon perceived tension to restore anatomical footprint of repair	
	RepairQuality	Surgeon subjective rating of the repair quality	
Survival	TreatmentStatus	Labelled as failure after review of clinical notes indicating construct failure (non-operative management) OR reoperation involving removal of index repair hardware	
	RetearStatus	Adverse event involving image-confirmed retear or hardware loosening	
Adverse Events	Modified sink grade	Modification of the Sink grading of complication severity	(Felsch et al. 2021)
Patient-Reported Outcomes	WORC Physical Q3	How much weakness do you experience in your shoulder?	(Kirkley, Alvarez, and Griffin 2003)

Stage 2a IDEAL evaluation of a third-generation biocomposite suture anchor in arthroscopic rotator cuff repair: Subgroup cohort analysis of the PRULO registry with 12-month follow up

C Scholes, M Fatima, C Moody, K Eng, Richard S Page

Stage 2a IDEAL evaluation of a third-generation biocomposite suture anchor in arthroscopic rotator cuff repair: Subgroup cohort analysis of the PRULO registry with 12-month follow up

C Scholes, M Fatima, C Moody, K Eng, Richard S Page

2.5 Record [8] Data sources

Data was sourced directly from the PRULO clinical registry (Scholes et al. 2023).

2.6 Record [9] Bias

For a discussion of biases in the context of the clinical registry utilised for this analysis, refer to (Scholes et al. 2023). Specific to this analysis, the following considerations are noted in Table 3.

Table 3: Biases in analysis of observational cohort of a clinical registry

Bias	Definition	Source	Mitigation
Misclassification	Treatment record labelled into incorrect cohort. PROMs package not aligned to	(Benchimol et al. 2015)	Clinical notes reviewed by experienced reviewer and matched to ICD10 code by definition.
Confounder	An variable of interest and a target outcome simultaneously influenced by a third variable	(Tennant et al. 2020)	PROMs analysis incorporated adjustment for age and sex
Missing data	The absence of a data value where a treatment record is eligible to have a data value collected	(Carroll, Morris, and Keogh 2020)	Multiple imputation utilised
Prevalent user	Follow-up starts after eligible individuals have started the treatment. The follow-up time is left-truncated	(Nguyen et al. 2021)	Eligibility and enrollment is performed prior to treatment offering for any patient or new presentation. Index procedures identified for analysis are followed prior to surgery occurring.
Selection	Treatments are selected based on post-treatment criteria	(Nguyen et al. 2021)	Unable to be mitigated fully - records are identified by presence of hardware code associated with suture of interest
Immortal time	Individuals need to meet eligibility criteria that can only be assessed after follow-up has started	(Nguyen et al. 2021)	Patients enrolled at time of diagnosis
Pseudoreplication	Analyse data while ignoring dependency between observations. Inadequate model specification.	(Davies and Gray 2015; Lazic 2010)	Cluster for patient in survival (all-cause failure and re-tear). Utilise mixed effects linear model (lme4::lmer) for PROMs analysis with treatment identifier as random effect

Stage 2a IDEAL evaluation of a third-generation biocomposite suture anchor in arthroscopic rotator cuff repair: Subgroup cohort analysis of the PRULO registry with 12-month follow up

C Scholes, M Fatima, C Moody, K Eng, Richard S Page

Stage 2a IDEAL evaluation of a third-generation biocomposite suture anchor in arthroscopic rotator cuff repair: Subgroup cohort analysis of the PRULO registry with 12-month follow up

C Scholes, M Fatima, C Moody, K Eng, Richard S Page

2.7 Record [10] Sample size

Sample size was derived based on the available records from the Registry at the time of analysis.

2.8 Record [11] Quantitative variables

The anterior-posterior (AP) and mediolateral (ML) dimensions of the cuff tear were reported and multiplied to calculate tear area (mm^2). The tear was also classified according to (Rashid et al. 2017).

- **Small** tears were defined as full-thickness defects in the supraspinatus tendon under 1 cm in the anterior–posterior (AP) dimension.
- **Medium** tears were defined as full-thickness defects in the supraspinatus tendon only, greater than 1 cm and less than 3 cm in the AP dimension.
- **Large** tears involved full-thickness defects of both the supraspinatus and infraspinatus tendons, greater than 3 cm, and less than 5 cm in the AP dimension.
- **Massive** tears involved all 3 tendons (supraspinatus, infraspinatus, and subscapularis) and were greater than 5 cm in the AP dimension.

Partial tears were left labelled as *partial*. Ultimately recoded tear classification based on AP tear length, as the involvement of other tendons for tears of small length was not adequately defined in the original paper.

Read in data to establish account type

Set up for management/surgery summary

Prepare complications table

Write out and read in for severity grading. Grading according to (Felsch et al. 2021).

Prepare mastersheet for survival curve for retear outcome

Set up for PROMs

Modify to track suture usage

Stage 2a IDEAL evaluation of a third-generation biocomposite suture anchor in arthroscopic rotator cuff repair: Subgroup cohort analysis of the PRULO registry with 12-month follow up

C Scholes, M Fatima, C Moody, K Eng, Richard S Page

2.9 Record [12] Statistical methods

2.9.1 Record [12.1] Access to population

How is the registry snapshot derived and what do we not have access to at this level of analysis

2.9.2 Record [12.2] Data cleaning methods

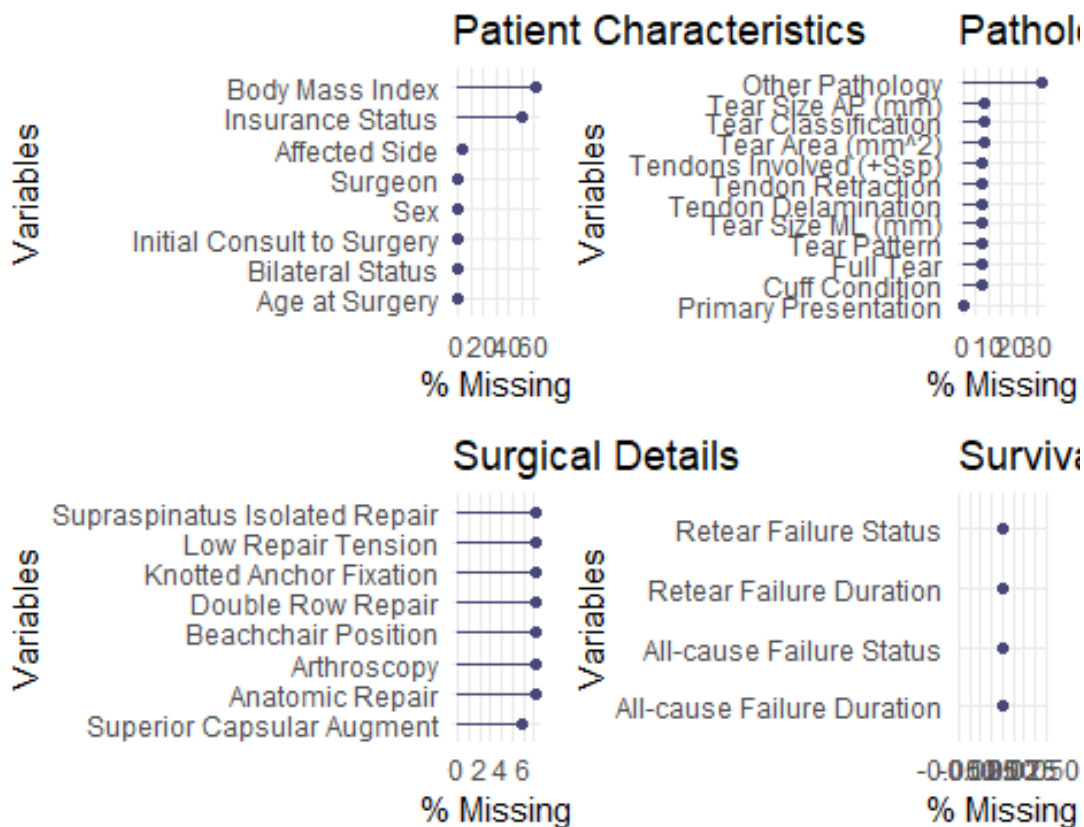
Cycle between initial data review (earlier version of analysis) and correction in the database

2.9.3 Record [12.3] Data linkage

Not applicable

2.9.4 Record [12.4] Missingness evaluation and management

Missingness was assessed with visualisation and table functions in the *naniar* package (Tierney and Cook 2023) and compiled into figures using *patchwork* (Pedersen 2023).



Stage 2a IDEAL evaluation of a third-generation biocomposite suture anchor in arthroscopic rotator cuff repair: Subgroup cohort analysis of the PRULO registry with 12-month follow up

Figure 1a: Missingness by variable

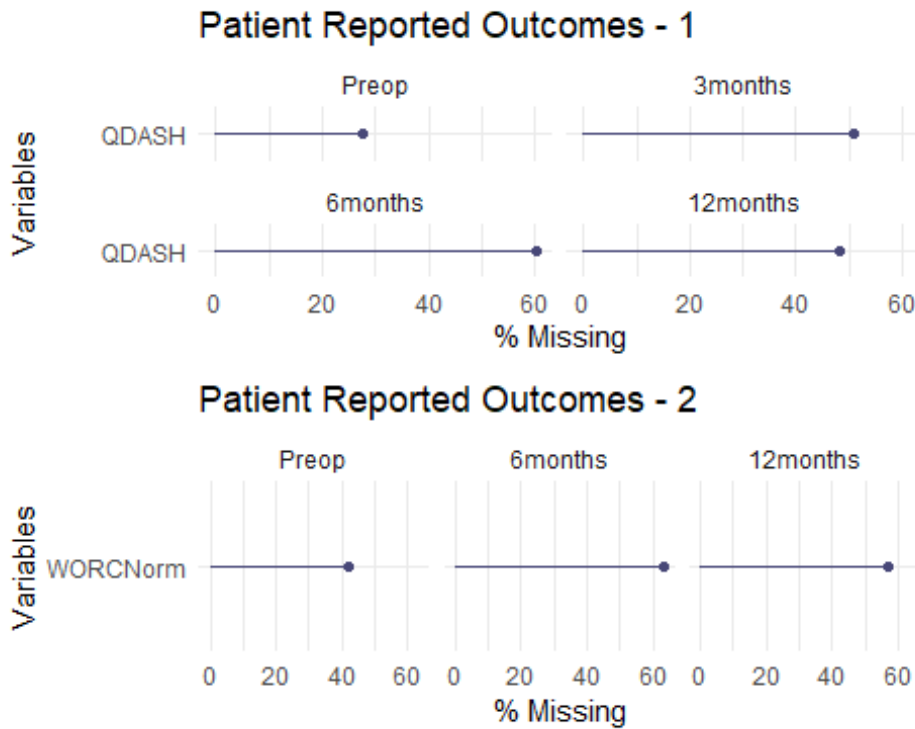


Figure 1b: Missingness by PROMs variable

The data tables were sliced to the required columns (PROMs and adjunct columns) in preparation for multiple imputation using chained equations (White, Royston, and Wood 2010) with the *mice* package (Buuren and Groothuis-Oudshoorn 2011).

3. Analysis Results

3.1 Record [13] Participants

The initial export from the registry returned 2679 records of all types.

3.1.1 Record [13.1] Treatment selection

A flow chart was generated using the *consort* package (Dayim 2023).

The diagram below summarises recruitment and categorisation of patients into the PRULO registry - created with the *consort* package (Dayim 2023).

Stage 2a IDEAL evaluation of a third-generation biocomposite suture anchor in arthroscopic rotator cuff repair: Subgroup cohort analysis of the PRULO registry with 12-month follow up

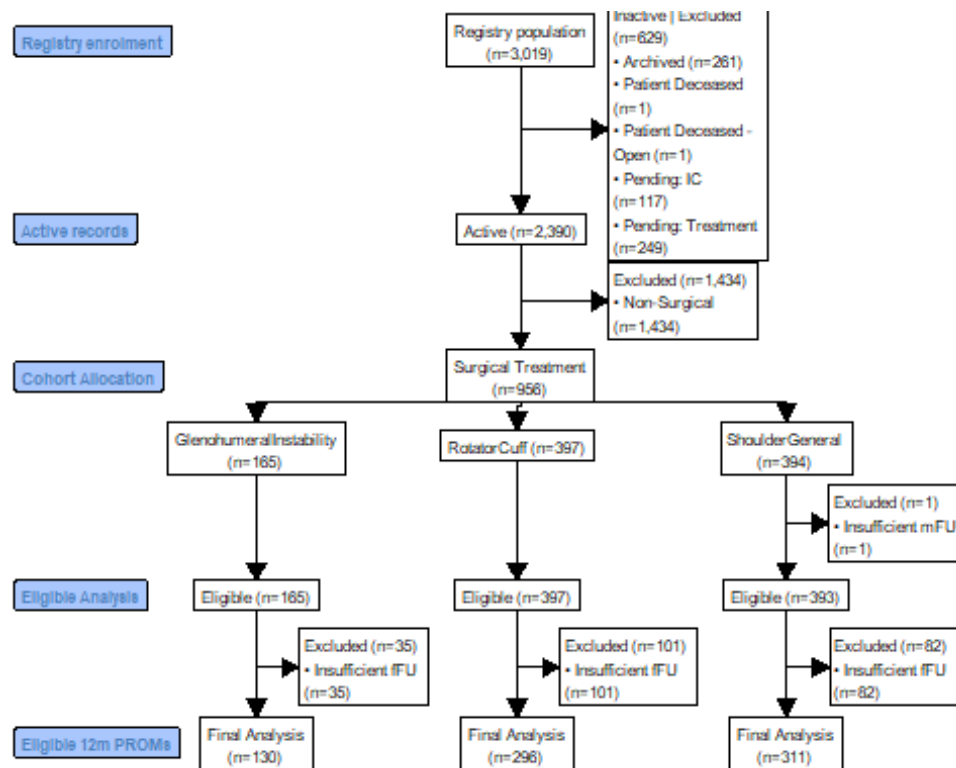


Figure 2: Flow chart of treatment record inclusion and separation into cohorts for analysis. mFU - Minimum follow up (30 days).

The table below summarises patient diagnoses in the PRULO registry.

Table 4: Summary of diagnoses by ICD-10 code (top 5 by frequency)

RegistryCohortName	ICD10	n
GlenohumeralInstability	S43.42	61
GlenohumeralInstability	S43.0	53
GlenohumeralInstability	M25.31	31
GlenohumeralInstability	M24.4	24
GlenohumeralInstability	M24.21	4
RotatorCuff	M75.1	261
RotatorCuff	S46.0	107
RotatorCuff	S43.43	26
RotatorCuff	M75.3	18

Stage 2a IDEAL evaluation of a third-generation biocomposite suture anchor in arthroscopic rotator cuff repair: Subgroup cohort analysis of the PRULO registry with 12-month follow up

RegistryCohortName	ICD10	n
RotatorCuff	M75.4	10
ShoulderGeneral	M19.0	220
ShoulderGeneral	M75.0	47
ShoulderGeneral	S42.0	34
ShoulderGeneral	M12.0	25
ShoulderGeneral	S43.5	20

3.2 Record [14] Patient and record characteristics

Patient characteristics for cases receiving the suture of interest are summarised in Table 5.

Table 5: Summary of patient characteristics

Characteristic	N	N = 69	95% CI ¹
Age at Surgery, Mean (SD)	69	61 (9)	59 - 63
Female, % (n)	69	32% (22)	21 - 44
Non-dominant, % (n)	66	39% (26)	28 - 52
Surgeon, % (n)	69		
A		1.4% (1)	0.08 - 8.9
B		99% (68)	91 - 100
BMI, Mean (SD)	26	23 (14)	18 - 29
Bilateral, % (n)	69	16% (11)	8.6 - 27
Exam to surgery delay (weeks), Mean (SD)	69	10 (10)	7.7 - 13
Insurance Type, % (n)	34		
DVA ²		2.9% (1)	0.15 - 17

Stage 2a IDEAL evaluation of a third-generation biocomposite suture anchor in arthroscopic rotator cuff repair: Subgroup cohort analysis of the PRULO registry with 12-month follow up

Characteristic	N	N = 69	95% CI ¹
Private		88% (30)	72 - 96
TAC ³		2.9% (1)	0.15 - 17
Uninsured		5.9% (2)	1.0 - 21
¹ CI = Confidence Interval			
² DVA = Department of Veterans Affairs			
³ TAC = Transport Accident Commission			

3.2.1 Record [14.1] Pathology characteristics

Pathology characteristics for cases receiving the suture of interest are summarised in Table 6.

Table 6: Summary of pathology characteristics

Characteristic	Available Sample	Summary Statistic	95% CI ¹
Primary Presentation, % (n)	69	100 (69)	93 - 100
Full Tear, % (n)	64	98 (63)	90 - 100
Fatty Infiltration, % (n) ²	64		
0		11 (7)	4.9 - 22
1		52 (33)	39 - 64
2		33 (21)	22 - 46
3		4.7 (3)	1.2 - 14
Tendon Retraction, % (n) ³	64		

Stage 2a IDEAL evaluation of a third-generation biocomposite suture anchor in arthroscopic rotator cuff repair: Subgroup cohort analysis of the PRULO registry with 12-month follow up

Characteristic	Available Sample	Summary Statistic	95% CI ¹
I		33 (21)	22 - 46
II		44 (28)	32 - 57
III		20 (13)	12 - 33
IV		3.1 (2)	0.54 - 12
Tendon Delamination, % (n)	64	72 (46)	59 - 82
Tendons Involved (+Supraspinatus), % (n)	64		
Infraspinatus		22 (14)	13 - 34
Infraspinatus; Subscapularis		11 (7)	4.9 - 22
Infraspinatus; Teres Minor; Subscapularis		1.6 (1)	0.08 - 9.5
Subscapularis		13 (8)	5.9 - 24
Subscapularis (isolated)		16 (10)	8.1 - 27
Supraspinatus (isolated)		38 (24)	26 - 51
Tear Size AP (mm), Mean (SD)	63	24 (11)	21 - 27
Tear Size ML (mm), Mean (SD)	64	20 (9)	17 - 22
Tear Area (mm ²), Mean (SD)	63	548 (584)	401 - 695
Tear Classification, % (n) ⁴	63		
Large		16 (10)	8.3 - 28
Massive		3.2 (2)	0.55 - 12

Stage 2a IDEAL evaluation of a third-generation biocomposite suture anchor in arthroscopic rotator cuff repair: Subgroup cohort analysis of the PRULO registry with 12-month follow up

Characteristic	Available Sample	Summary Statistic	95% CI ¹
Medium		76 (48)	64 - 86
Partial		1.6 (1)	0.08 - 9.7
Small		3.2 (2)	0.55 - 12
Tear Pattern, % (n)	64		
Crescent		48 (31)	36 - 61
L		17 (11)	9.3 - 29
Reverse L		14 (9)	7.0 - 26
U		17 (11)	9.3 - 29
V		3.1 (2)	0.54 - 12
Other Pathology, % (n)	47	43 (20)	29 - 58
¹ CI = Confidence Interval			
² Fuchs et al 1999			
³ Modified Patte Grading (Lädermann et al., 2016)			
⁴ (Rashid et al., 2017)			

3.2.2 Record [14.2] Management summary

Surgical details are summarised in Table 7.

Table 7: Summary of management and surgical details

Stage 2a IDEAL evaluation of a third-generation biocomposite suture anchor in arthroscopic rotator cuff repair: Subgroup cohort analysis of the PRULO registry with 12-month follow up

Characteristic	**Available Sample**	**Summary Statistic**	95% CI¹
Arthroscopy, % (n)	64	100% (64)	93 - 100
Beachchair Position, % (n)	64	100% (64)	93 - 100
Supraspinatus (isolated) Repair, % (n)	64	36% (23)	25 - 49
Double Row Repair, % (n)	64	83% (53)	71 - 91
Knotted Anchor Fixation, % (n)	64	100% (64)	93 - 100
Superior Capsular Augment, % (n)	65	1.5% (1)	0.08 - 9.4
Low Repair Tension, % (n)	64	66% (42)	53 - 77
Anatomic Repair, % (n)	64	80% (51)	67 - 88
¹ CI = Confidence Interval			

3.2.3 Record [14.3] Follow up

The sample overall had a median follow up of 101 weeks.

Table 8: Summary of case followup (weeks) for the sample included for analysis

Characteristic	No further followup, N = 1¹	Ongoing, N = 68¹
TreatDuration	20 (20, 20)	101 (76, 139)

¹Median (IQR)

Stage 2a IDEAL evaluation of a third-generation biocomposite suture anchor in arthroscopic rotator cuff repair: Subgroup cohort analysis of the PRULO registry with 12-month follow up

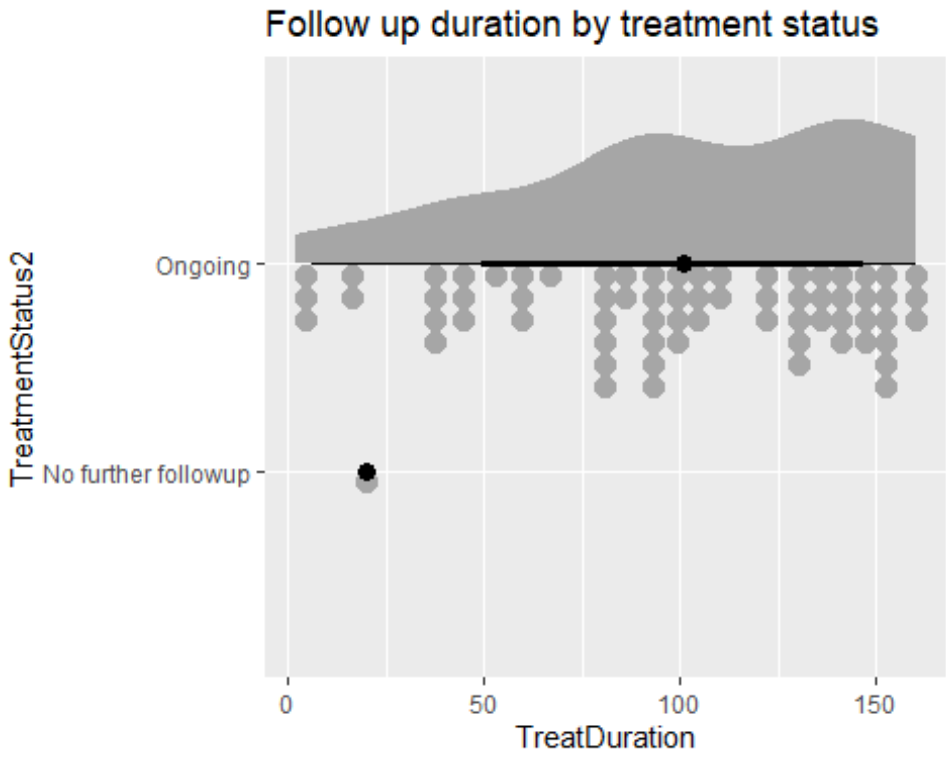


Figure 3: Summary of follow up duration for included sample

3.3 Record [15] Outcomes

3.3.1 Record [15.1] Treatment survival (free from all-cause failure)

There were no revisions or failures observed in the present sample.

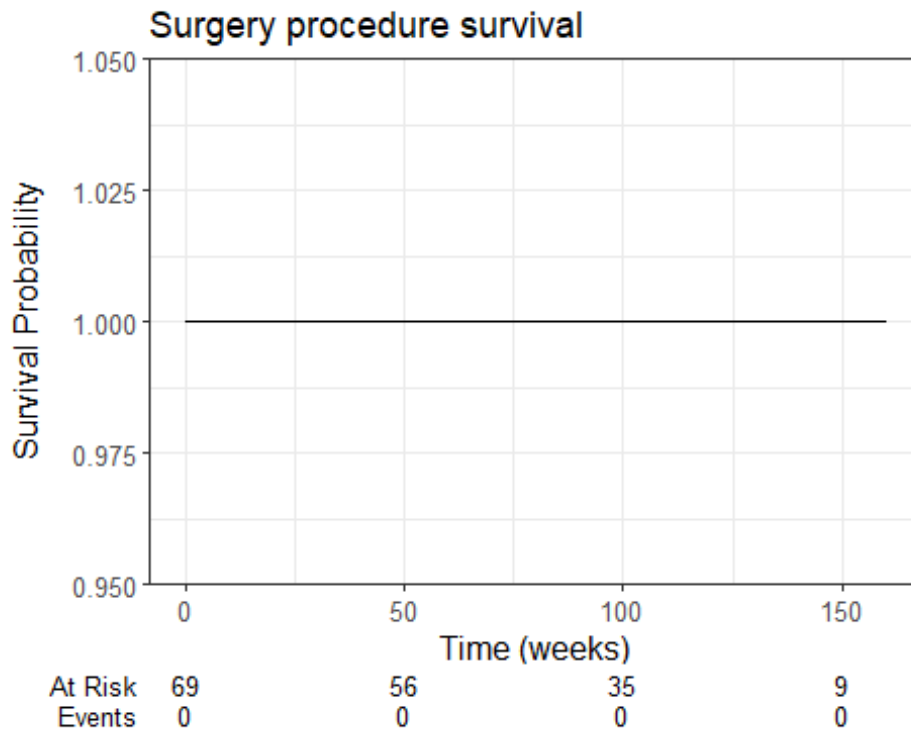


Figure 4: Survival curve for all-cause failure for sample of interest

Table 8: Summary of procedure survival from all-cause failure

Characteristic	12 weeks	24 weeks	52 weeks
Overall	100% (100% - 100%)	100% (100% - 100%)	100% (100% - 100%)

3.3.2 Record [15.2] Treatment survival (free from retear)

There were no retears observed in the present sample.

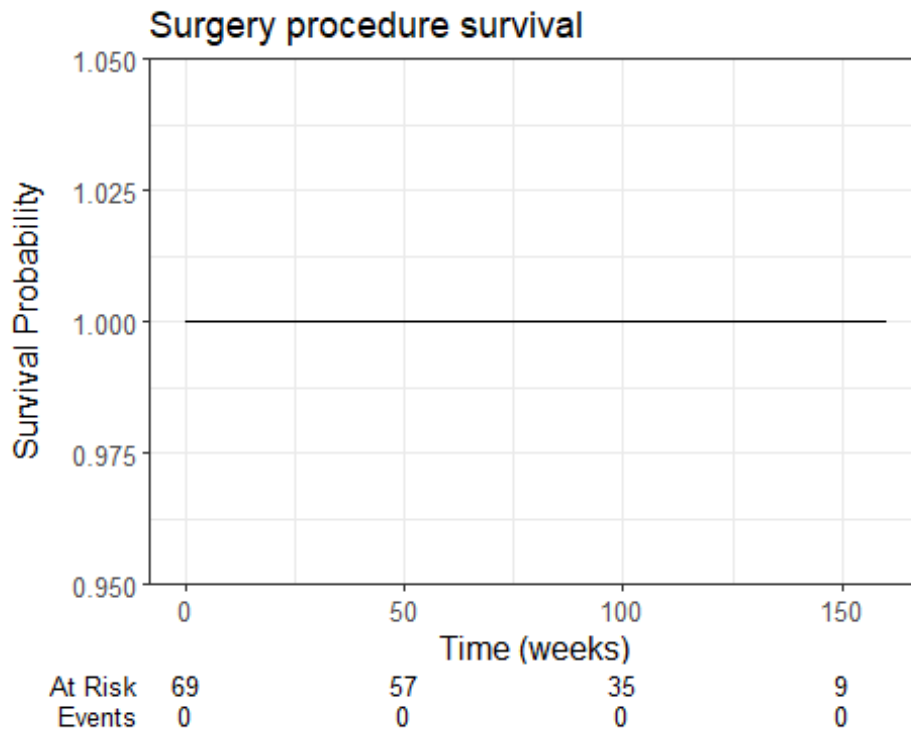


Figure 5: Survival curve for tear recurrence after rotator cuff repair

Table 9: Summary of procedure survival from retear

Characteristic	12 weeks	26 weeks	52 weeks
Overall	100% (100% - 100%)	100% (100% - 100%)	100% (100% - 100%)

3.3.3 Record [15.3] Adverse events and complications

Of the 69 cases included in the analysis, there were 6 treatments observed with 6 adverse events of any kind, equating to an incidence of 8.7 (95%CI, 3.6 - 18.6). There were 0 reoperations and 0 events observed intraoperatively. A summary of the adverse events observed is included in Table 10.

Table 10: Summary of adverse events

Stage 2a IDEAL evaluation of a third-generation biocomposite suture anchor in arthroscopic rotator cuff repair: Subgroup cohort analysis of the PRULO registry with 12-month follow up

Characteristic	Available Sample	Summary Statistic
Complication Nature, % (n)	6	
Capsulitis - Stiffness		50% (3)
Pain - Other		50% (3)
Severity Grade, % (n)	6	
1		67% (4)
2		17% (1)
4		17% (1)

3.3.4 Record [15.4] Patient-reported outcome measures

The QDASH total score and WORC Normalised Index, as well as Question 3 of the Physical sub-scale of the WORC were visualised using the *ggdist* (Kay 2023) and *ggplot2* (Wickham 2016) packages. Plots were arranged using the *patchwork* (Pedersen 2023) package.

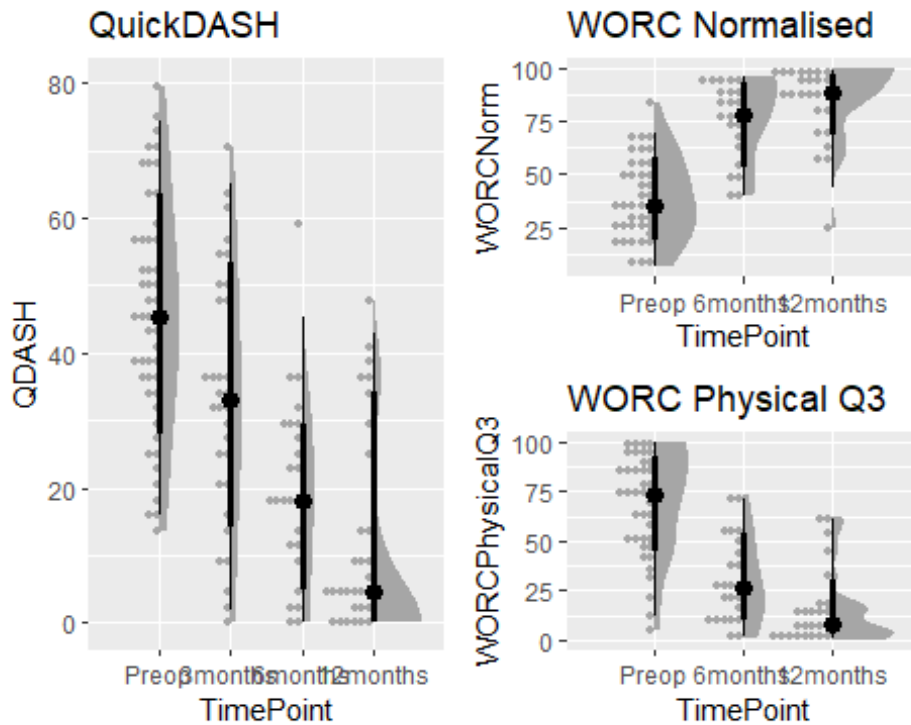


Figure 6: Summary of patient reported outcomes trajectories by timepoint

3.4 Record [16] Main results

The imputed datasets for QDASH and WORC were modeled with a linear mixed effects model in *lme4* (Bates et al. 2015) and summarised with *broom.mixed* (Bolker and Robinson 2022). Up to a 38.7 point improvement in QDASH total score was observed (Table 11), as well as 47.1 and 54 point improvements in WORC Index Normalised and WORC Physical Question3 respectively (Table 12). Distributions of model-predicted results illustrated variability in recovery trajectories within all PROMs measures (Figure 7).

Table 11: Summary of pooled linear model results QDASH

Characteristic	Beta	95% CI ¹	p-value
TimePoint			
Preop	—	—	

Stage 2a IDEAL evaluation of a third-generation biocomposite suture anchor in arthroscopic rotator cuff repair: Subgroup cohort analysis of the PRULO registry with 12-month follow up

Characteristic	Beta	95% CI¹	p-value
3months	-12.19	-18.23, -6.15	<0.001
6months	-25.57	-32.24, -18.89	<0.001
12months	-32.32	-38.65, -25.98	<0.001
Age at Surgery	-0.02	-0.42, 0.38	0.915
Male vs Female	-9.07	-17.07, -1.08	0.027
¹ CI = Confidence Interval			

Table 12: Summary of pooled linear model results WORC

Characteristic	Normalised Index			Physical Q3		
	Beta	95% CI¹	p-value	Beta	95% CI¹	p-value
TimePoint						
Preop	—	—		—	—	
6months	33.18	24.21, 42.15	<0.001	-32.13	-42.87, -21.40	<0.001
12months	38.56	30.07, 47.05	<0.001	-43.35	-53.97, -32.73	<0.001
Age at Surgery	0.34	-0.10, 0.77	0.123	-0.47	-1.16, 0.23	0.177
Male vs Female	10.24	0.08, 20.40	0.048	-7.92	-20.40, 4.56	0.203
¹ CI = Confidence Interval						

Stage 2a IDEAL evaluation of a third-generation biocomposite suture anchor in arthroscopic rotator cuff repair: Subgroup cohort analysis of the PRULO registry with 12-month follow up

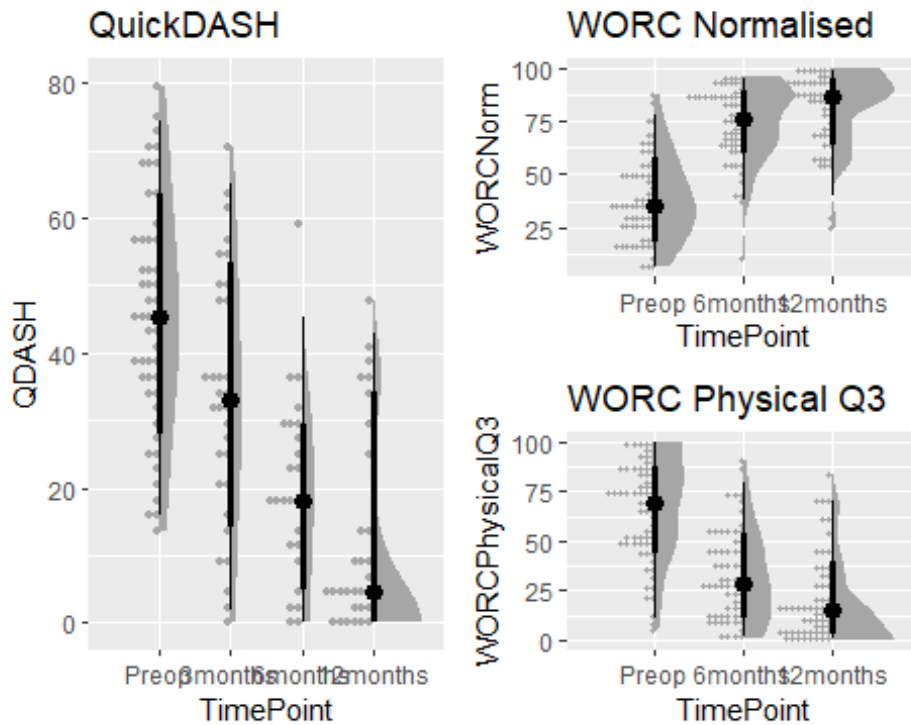


Figure 7: Model predicted PROMs trajectories across time points.

The MCID data for WORC in rotator cuff is highly volatile and requires a careful analysis in its own right to appropriately select and implement an MCID analysis in this context.

3.5 Record [17] Sensitivity analyses

Based on the distribution changes in QDASH and WORC over time, a sensitivity analysis was performed on the model structure using the complete case dataset. A comparison was made between quantile regression using the *quantreg* package (Koenker 2023) and an ordinary least squares linear model from the *rstats* package (2022) and a linear mixed effects model with the *lme4* package (Bates et al. 2015). Results were tabulated using the *modelsummary* package (Arel-Bundock 2022) as rq models are not supported in *gtsummary*.

Table 13: Comparison of linear model types to assess patient-reported outcomes

	RQ	LM	ME
(Intercept)	60.7	56.7	54.1
	se = 13.8	se = 10.7	se = 12.9

Stage 2a IDEAL evaluation of a third-generation biocomposite suture anchor in arthroscopic rotator cuff repair: Subgroup cohort analysis of the PRULO registry with 12-month follow up

	RQ	LM	ME
	[33.7, 87.6]	[35.5, 77.9]	[28.6, 79.5]
TimePointRecode3months	-10.4	-11.7	-12.2
	se = 5.0	se = 3.7	se = 3.1
	[-20.2, -0.6]	[-19.0, -4.4]	[-18.2, -6.2]
TimePointRecode6months	-23.7	-25.0	-25.6
	se = 4.2	se = 4.0	se = 3.4
	[-31.8, -15.5]	[-32.9, -17.1]	[-32.2, -18.9]
TimePointRecode12months	-38.6	-32.2	-32.3
	se = 3.5	se = 3.8	se = 3.2
	[-45.4, -31.7]	[-39.6, -24.8]	[-38.6, -26.0]
AgeAtTreatment	-0.1	-0.1	0.0
	se = 0.2	se = 0.2	se = 0.2
	[-0.5, 0.3]	[-0.4, 0.2]	[-0.4, 0.4]
Sex2Male	-9.2	-8.0	-9.1
	se = 4.6	se = 3.3	se = 4.0
	[-18.1, -0.2]	[-14.5, -1.5]	[-17.1, -1.1]
SD (Intercept TreatmentUID)			10.1
			se = 1.8
			[7.2, 14.3]
SD (Observations)			12.8
			se = 1.0
			[11.0, 15.0]
Num.Obs.	137	137	137
R2	0.398	0.422	
R2 Adj.		0.400	
R2 Marg.			0.415
R2 Cond.			0.640
AIC	1164.4	1160.2	1130.5
BIC	1182.0	1180.6	1153.8
ICC			0.4
Log.Lik.		-573.095	
F		19.116	

Stage 2a IDEAL evaluation of a third-generation biocomposite suture anchor in arthroscopic rotator cuff repair: Subgroup cohort analysis of the PRULO registry with 12-month follow up

	RQ	LM	ME
RMSE	16.19	15.87	10.96

The comparison between models revealed an underestimate of the difference in 12-month score to preoperative baseline of 7.7 points for the QuickDASH (14.7%) in the mixed effects linear model, compared to the quantile regression (50th percentile).

4. Export Files

Export images files for reporting.

5. References

Aden-Buie, Garrick. 2023. "Epoxy: String Interpolation for Documents, Reports and Apps." <https://CRAN.R-project.org/package=epoxy>.

Arel-Bundock, Vincent. 2022. "Modelsummary: Data and Model Summaries in r" 103. <https://doi.org/10.18637/jss.v103.i01>.

Barbone, Jordan Mark, and Jan Marvin Garbuszus. 2024. "Openxlsx2: Read, Write and Edit 'Xlsx' Files." <https://janmarvin.github.io/openxlsx2/>.

Bates, Douglas, Martin Machler, Ben Bolker, and Steve Walker. 2015. "Fitting Linear Mixed-Effects Models Using lme4" 67. <https://doi.org/10.18637/jss.v067.i01>.

Benchimol, Eric I., Liam Smeeth, Astrid Guttmann, Katie Harron, David Moher, Irene Petersen, Henrik T. Sørensen, Erik von Elm, and Sinéad M. Langan. 2015. "The REporting of Studies Conducted Using Observational Routinely-Collected Health Data (RECORD) Statement." *PLOS Medicine* 12 (10): e1001885. <https://doi.org/10.1371/journal.pmed.1001885>.

Bolker, Ben, and David Robinson. 2022. "Broom.mixed: Tidying Methods for Mixed Models." <https://CRAN.R-project.org/package=broom.mixed>.

Bryan, Jennifer. 2023. "Googlesheets4: Access Google Sheets Using the Sheets API V4." <https://CRAN.R-project.org/package=googlesheets4>.

Buuren, Stef van, and Karin Groothuis-Oudshoorn. 2011. "Mice: Multivariate Imputation by Chained Equations in r" 45: 1–67. <https://doi.org/10.18637/jss.v045.i03>.

Carroll, Orlagh U., Tim P. Morris, and Ruth H. Keogh. 2020. "How Are Missing Data in Covariates Handled in Observational Time-to-Event Studies in Oncology? A Systematic Review." *BMC Medical Research Methodology* 20 (1). <https://doi.org/10.1186/s12874-020-01018-7>.

Stage 2a IDEAL evaluation of a third-generation biocomposite suture anchor in arthroscopic rotator cuff repair: Subgroup cohort analysis of the PRULO registry with 12-month follow up

C Scholes, M Fatima, C Moody, K Eng, Richard S Page

Davies, G. Matt, and Alan Gray. 2015. "Don't Let Spurious Accusations of Pseudoreplication Limit Our Ability to Learn from Natural Experiments (and Other Messy Kinds of Ecological Monitoring)." *Ecology and Evolution* 5 (22): 5295–5304.
<https://doi.org/10.1002/ece3.1782>.

Dayim, Alim. 2023. "Consort: Create Consort Diagram."
<https://CRAN.R-project.org/package=consort>.

Felsch, Quinten, Victoria Mai, Holger Durchholz, Matthias Flury, Maximilian Lenz, Carl Capellen, and Laurent Audigé. 2021. "Complications Within 6 Months After Arthroscopic Rotator Cuff Repair: Registry-Based Evaluation According to a Core Event Set and Severity Grading." *Arthroscopy: The Journal of Arthroscopic & Related Surgery* 37 (1): 50–58.
<https://doi.org/10.1016/j.arthro.2020.08.010>.

Fuchs, Bruno, Dominik Weishaupt, Marco Zanetti, Juerg Hodler, and Christian Gerber. 1999. "Fatty Degeneration of the Muscles of the Rotator Cuff: Assessment by Computed Tomography Versus Magnetic Resonance Imaging." *Journal of Shoulder and Elbow Surgery* 8 (6): 599–605. [https://doi.org/10.1016/s1058-2746\(99\)90097-6](https://doi.org/10.1016/s1058-2746(99)90097-6).

Iannone, Richard, Joe Cheng, Barret Schloerke, Ellis Hughes, Alexandra Lauer, and JooYoung Seo. 2024. "Gt: Easily Create Presentation-Ready Display Tables."
<https://CRAN.R-project.org/package=gt>.

Kay, Matthew. 2023. "Ggdist: Visualizations of Distributions and Uncertainty."
<https://doi.org/10.5281/zenodo.3879620>.

Kirkley, Alexandra, Christine Alvarez, and Sharon Griffin. 2003. "The Development and Evaluation of a Disease-Specific Quality-of-Life Questionnaire for Disorders of the Rotator Cuff: The Western Ontario Rotator Cuff Index." *Clinical Journal of Sport Medicine* 13 (2): 84–92. <https://doi.org/10.1097/00042752-200303000-00004>.

Koenker, Roger. 2023. "Quantreg: Quantile Regression."
<https://CRAN.R-project.org/package=quantreg>.

Lädemann, Alexandre, Stephen S. Burkhart, Pierre Hoffmeyer, Lionel Neyton, Philippe Collin, Evan Yates, and Patrick J. Denard. 2016. "Classification of Full-Thickness Rotator Cuff Lesions: A Review." *EFORT Open Reviews* 1 (12): 420–30.
<https://doi.org/10.1302/2058-5241.1.160005>.

Lazic, Stanley E. 2010. "The Problem of Pseudoreplication in Neuroscientific Studies: Is It Affecting Your Analysis?" *BMC Neuroscience* 11 (1).
<https://doi.org/10.1186/1471-2202-11-5>.

Nguyen, Van Thu, Mishelle Engleton, Mauricia Davison, Philippe Ravaud, Raphael Porcher, and Isabelle Boutron. 2021. "Risk of Bias in Observational Studies Using Routinely Collected Data of Comparative Effectiveness Research: A Meta-Research Study." *BMC Medicine* 19 (1).
<https://doi.org/10.1186/s12916-021-02151-w>.

Stage 2a IDEAL evaluation of a third-generation biocomposite suture anchor in arthroscopic rotator cuff repair: Subgroup cohort analysis of the PRULO registry with 12-month follow up

Pedersen, Thomas Lin. 2023. "Patchwork: The Composer of Plots."
<https://CRAN.R-project.org/package=patchwork>.

R Core Team. 2022. "R: A Language and Environment for Statistical Computing."
<https://www.R-project.org/>.

———. 2023. "R: A Language and Environment for Statistical Computing."
<https://www.R-project.org/>.

Rashid, Mustafa S, Cushla Cooper, Jonathan Cook, David Cooper, Stephanie G Dakin, Sarah Snelling, and Andrew J Carr. 2017. "Increasing Age and Tear Size Reduce Rotator Cuff Repair Healing Rate at 1 Year." *Acta Orthopaedica* 88 (6): 606–11.
<https://doi.org/10.1080/17453674.2017.1370844>.

Scholes, Corey, Kevin Eng, Meredith Harrison-Brown, Milad Ebrahimi, Graeme Brown, Stephen Gill, and Richard Page. 2023. "Patient Registry of Upper Limb Outcomes (PRULO): A Protocol for an Orthopaedic Clinical Quality Registry to Monitor Treatment Outcomes." *Journal of Surgical Protocols and Research Methodologies* 2023 (4).
<https://doi.org/10.1093/jsprm/snad014>.

Tennant, Peter W G, Eleanor J Murray, Kellyn F Arnold, Laurie Berrie, Matthew P Fox, Sarah C Gadd, Wendy J Harrison, et al. 2020. "Use of Directed Acyclic Graphs (DAGs) to Identify Confounders in Applied Health Research: Review and Recommendations." *International Journal of Epidemiology* 50 (2): 620–32. <https://doi.org/10.1093/ije/dyaa213>.

Tierney, Nicholas, and Dianne Cook. 2023. "Expanding Tidy Data Principles to Facilitate Missing Data Exploration, Visualization and Assessment of Imputations" 105.
<https://doi.org/10.18637/jss.v105.i07>.

White, Ian R., Patrick Royston, and Angela M. Wood. 2010. "Multiple Imputation Using Chained Equations: Issues and Guidance for Practice." *Statistics in Medicine* 30 (4): 377–99.
<https://doi.org/10.1002/sim.4067>.

Wickham, Hadley. 2016. "Ggplot2: Elegant Graphics for Data Analysis."
<https://ggplot2.tidyverse.org>.

Wickham, Hadley, Mara Averick, Jennifer Bryan, Winston Chang, Lucy D'Agostino McGowan, Romain François, Garrett Golemund, et al. 2019. "Welcome to the Tidyverse" 4: 1686.
<https://doi.org/10.21105/joss.01686>.

Stage 2a IDEAL evaluation of a third-generation biocomposite suture anchor in arthroscopic rotator cuff repair: Subgroup cohort analysis of the PRULO registry with 12-month follow up

C Scholes, M Fatima, C Moody, K Eng, Richard S Page