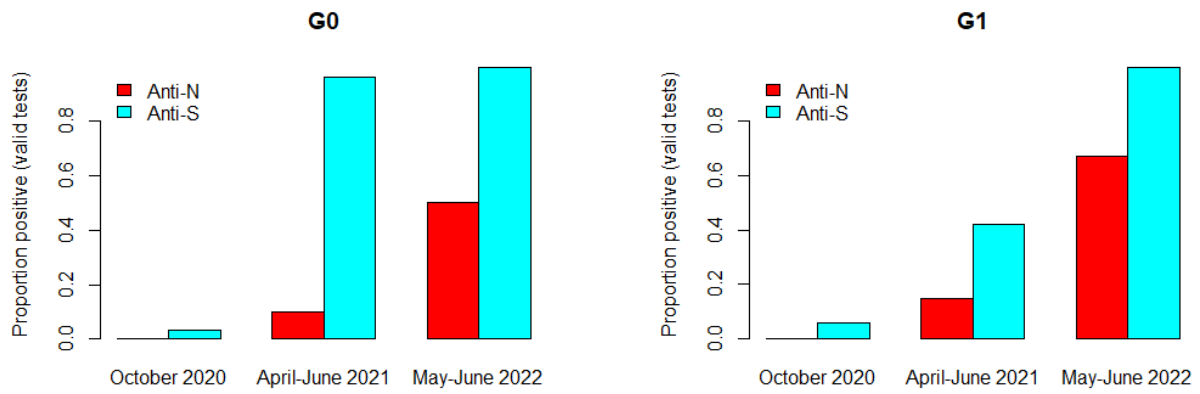


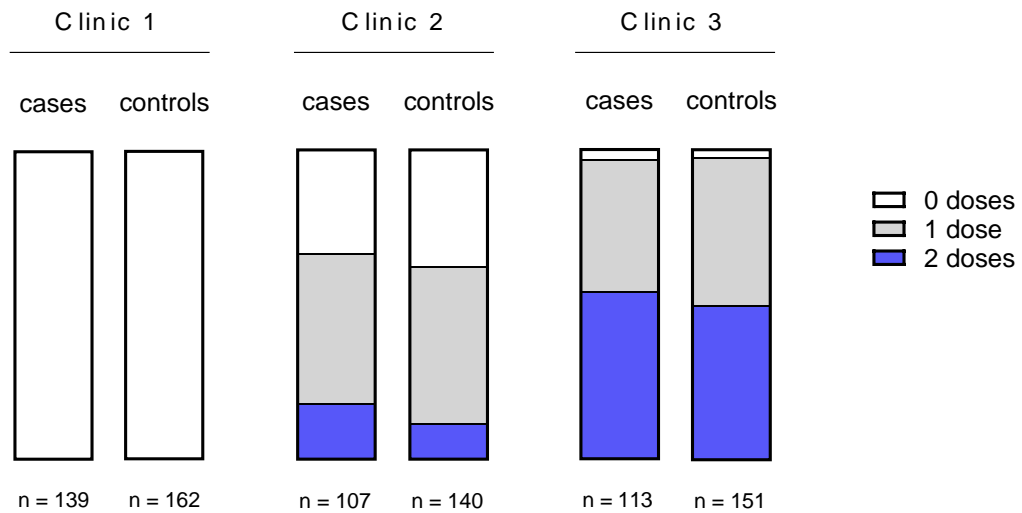
Supplementary Figure 1: Study design schematic

A total of 5200 ALSPAC participants were screened for anti-Spike IgG antibody by lateral flow in October 2020. Of these, 377 were recruited to this study and attended one or more sampling clinics from December 2020 to June 2021, providing whole blood and saliva samples, and completing health questionnaires. During this period, participants became eligible for their primary COVID-19 vaccination series via the UK national vaccine programme. Following the sampling period, participants continued to complete online questionnaires detailing their LFT and PCR-confirmed SARS-CoV-2 infections.



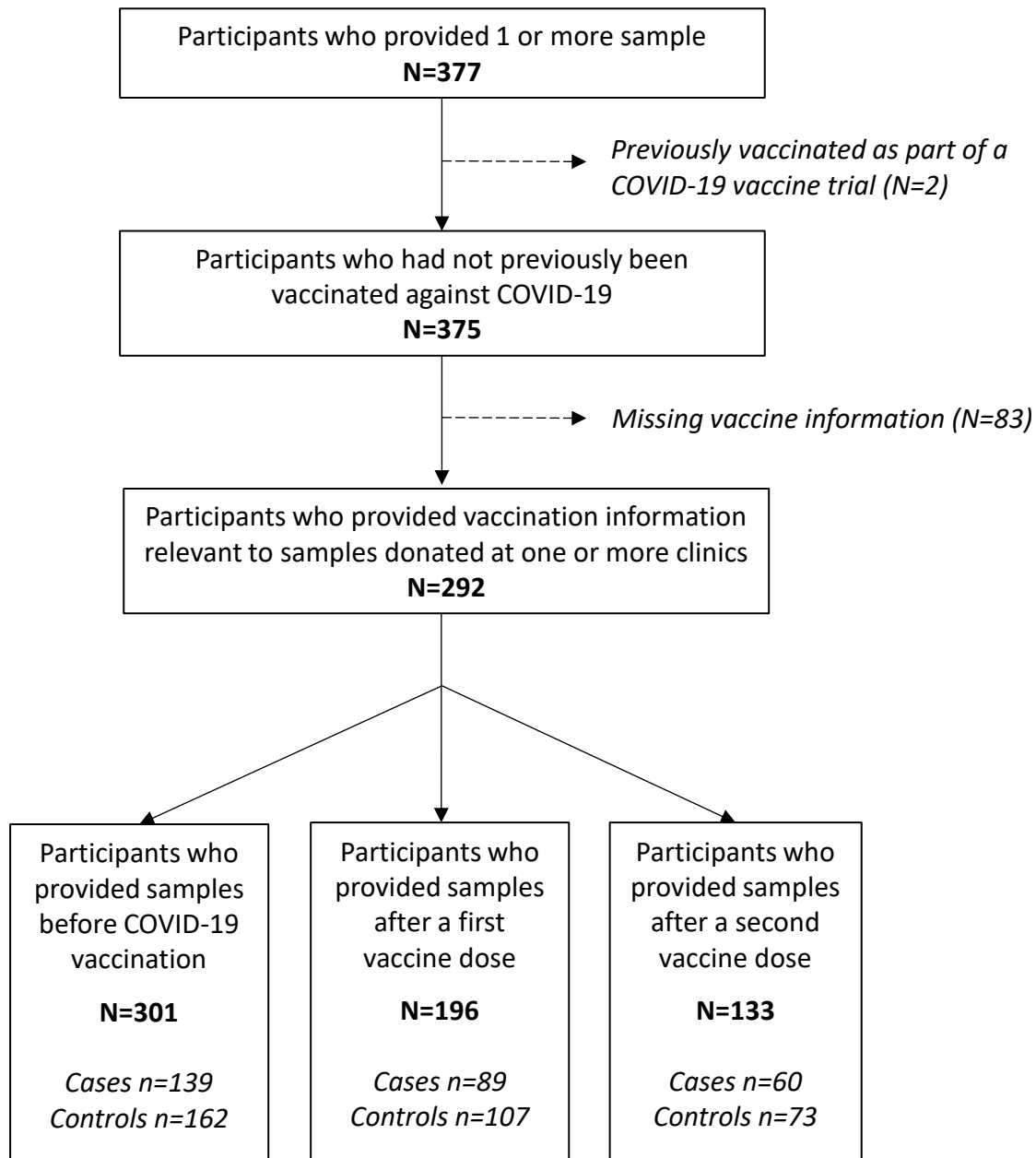
Supplementary Figure 2: Lateral flow antibody screening of the wider ALSPAC cohort.

ALSPAC participants were invited to complete questionnaires and to submit blood samples via post for SARS-CoV-2 anti-Spike (S) and anti-Nucleocapsid (N) antibody testing. Samples were collected at three timepoints in October 2020, April-June 2021, and May-June 2022. Testing was open to participants from the G0 (48-70 years) and G1 (29-30 years) generations. 4819



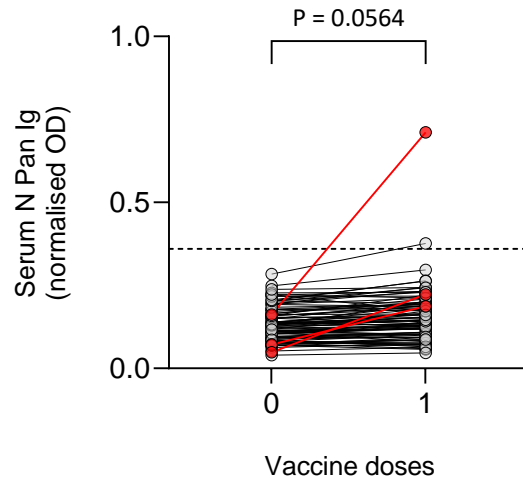
Supplementary Figure 3: Proportion of COVID-19 vaccinated participants at each study clinic.

Stratification of participants by their COVID-19 vaccination status at each study clinic, based upon self-reported vaccination timings. Participants were classified as cases based on a previous PCR-confirmed SARS-CoV-2 infection and/or positivity on the serum anti-Spike and/or anti-Nucleocapsid pan Ig screening ELISAs at clinic 1 (prior to vaccination).



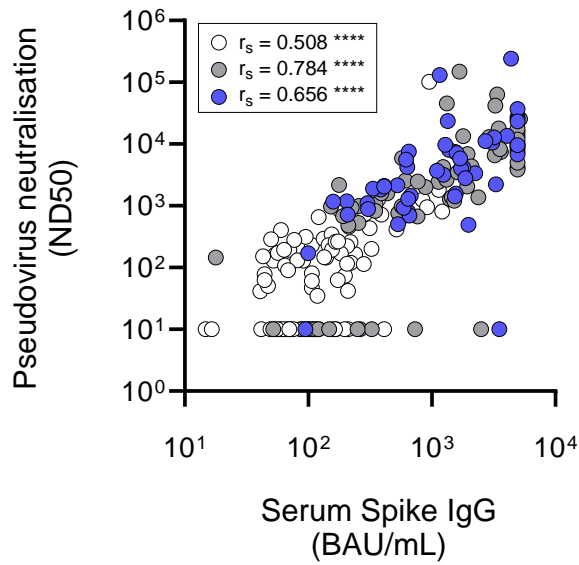
Supplementary Figure 4: Participants inclusion flowchart.

All G0 (original mothers and partners) and G1 (offspring generation) ALSPAC participants were eligible to voluntarily enrol in this study. Participant data was subsequently excluded for the analysis if they reported a previous COVID-19 vaccination. In order to focus on the immune responses to COVID-19 vaccines, data was also removed if there was no corresponding information provided on the COVID-19 vaccination status of the participant at a particular timepoint.



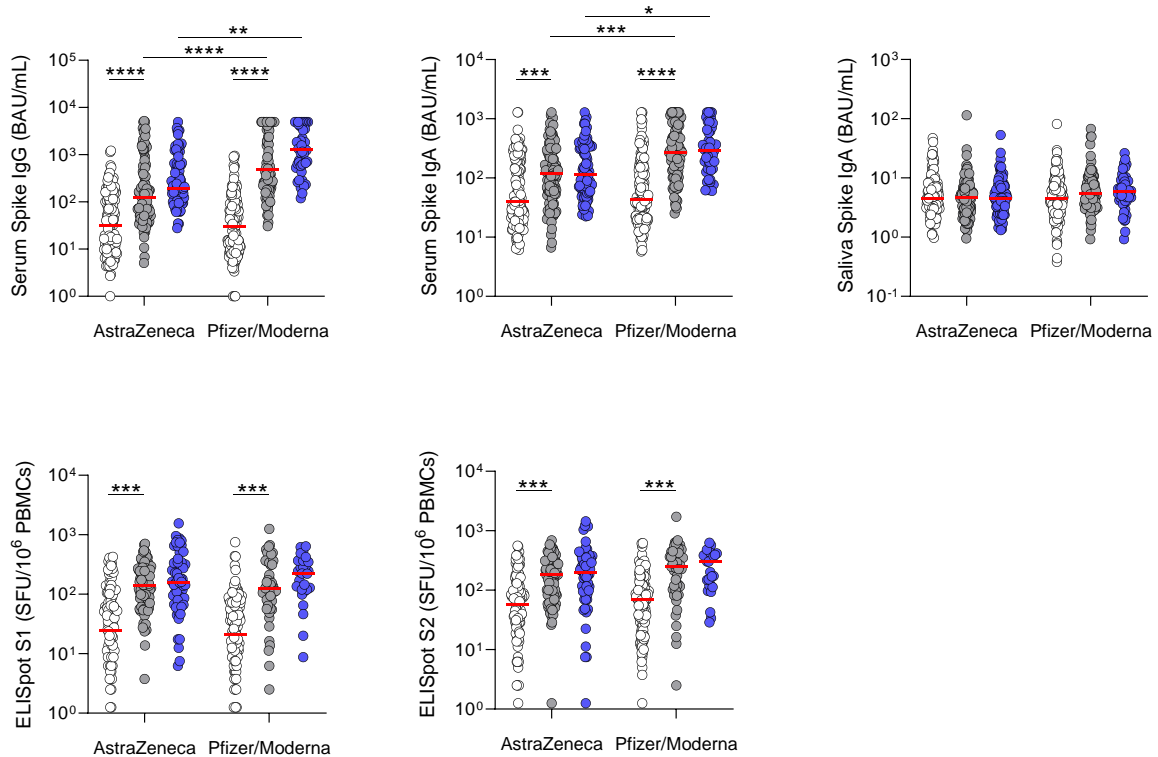
Supplementary Figure 5: Anti-N pan Ig levels in control participants before and after vaccine dose 1.

Serum anti-Nucleocapsid (N) pan Ig antibody levels in serum were measured by in-house ELISA. Results presented as normalised OD relative to an internal control. Data shown represent all participants classified as controls with data available both before and after the first vaccine dose (n=95). Participants with a ≥ 2 -fold increase in N pan Ig levels from baseline to post-dose 1 are highlighted in red (n=3). Responses before and after vaccination were compared using a Mann Whitney test.



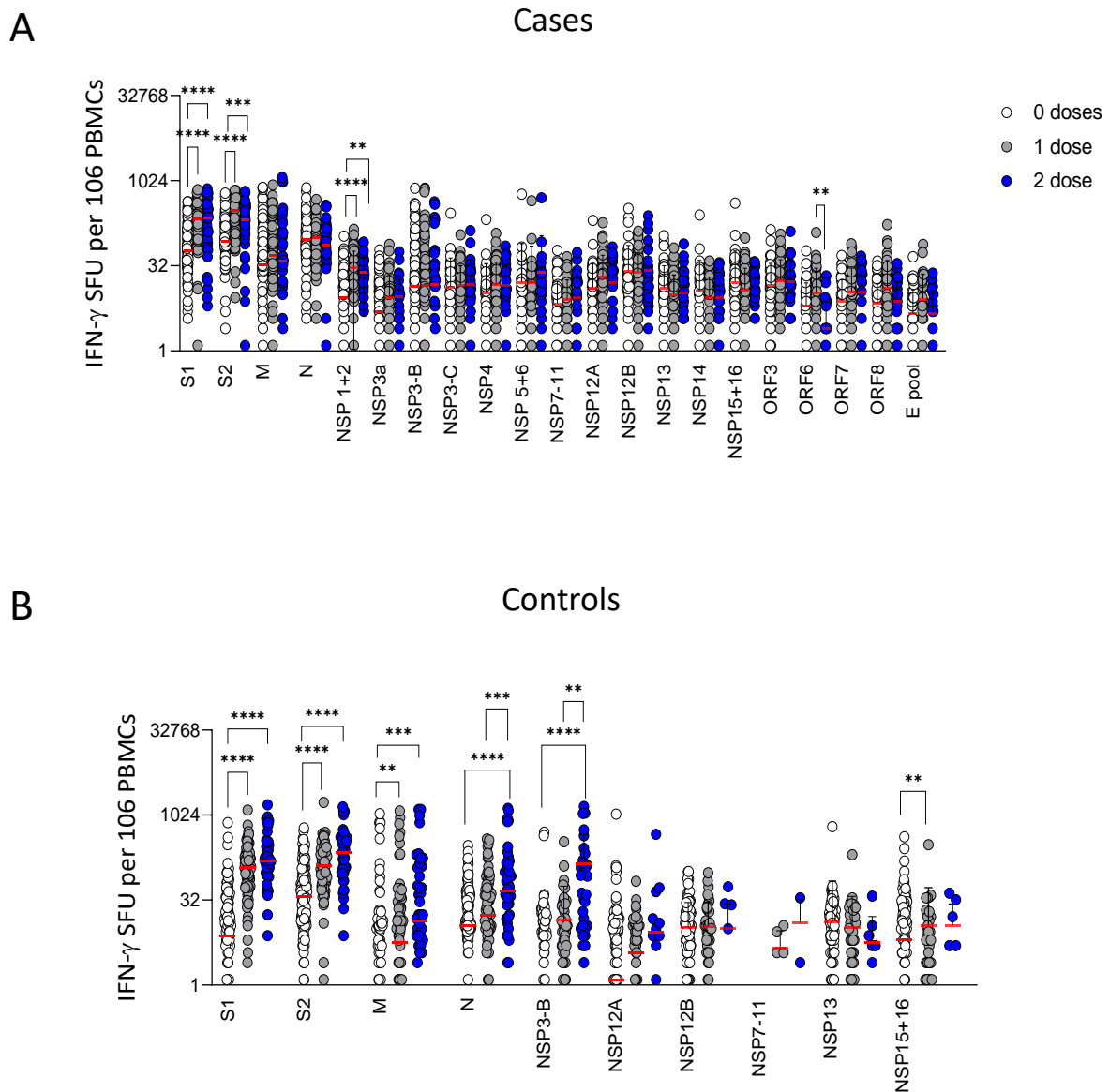
Supplementary Figure 6: Correlation between SARS-CoV-2 Spike-specific serum IgG and pseudoneutralising antibody levels.

Anti-Spike IgG levels in serum were measured by in-house ELISA and reported in BAU/mL following calibration of the assay to the WHO/NIBSC reference standard. Pseudoneutralising antibody titres against ancestral Spike were measured in serum. Spearman's rank (r_s) correlations were calculated at baseline (white; n=99), post dose 1 (grey; n=61) and post dose 2 (blue; n=49). P values were categorised as ≤ 0.05 (*), ≤ 0.01 (**), ≤ 0.001 (***), ≤ 0.0001 (****).



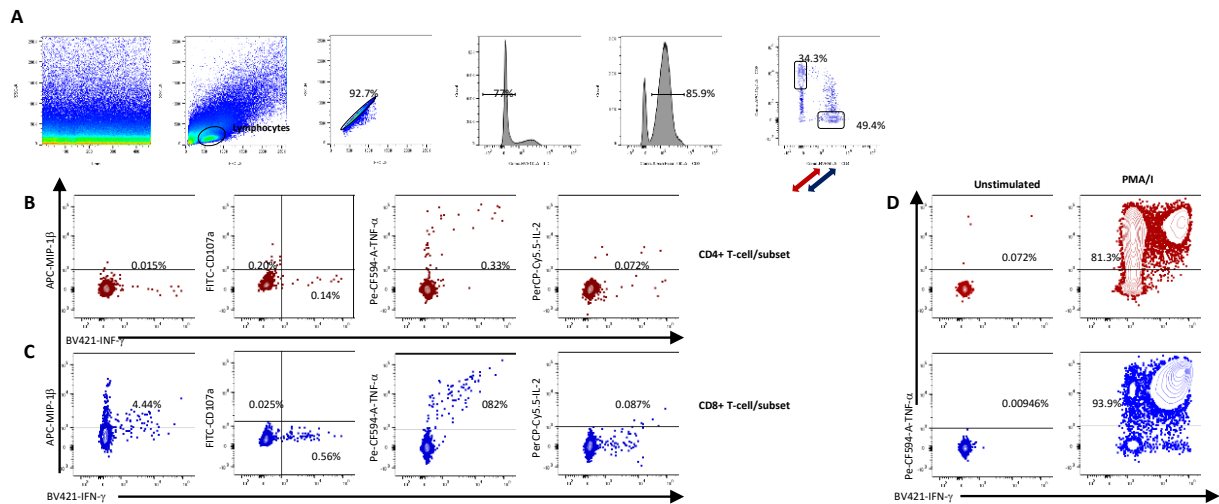
Supplementary Figure 7: Antibody and T cell responses by COVID-19 vaccination type.

Participants were stratified based upon the type of COVID vaccine received; AstraZeneca ChAdOx1 whole virion vaccine, or one of two mRNA-based vaccines (Pfizer/BioNtech BNT162b2 or Moderna mRNA-1273). All participants received homologous first and second doses. (A) Antibody levels in serum and saliva were measured by in-house ELISA. Assay thresholds were set using samples following recent SARS-CoV-2 infection and pre-pandemic controls to achieve 99% specificity. Results are reported in binding antibody units (BAU)/mL following calibration of the assay to the WHO/NIBSC reference standard. (B) Magnitude SARS-CoV-2 specific T cell response against Spike (pool-1 and 2) peptide pools measured via ELISpot assay. Shown are comparison of cells producing IFN- γ after stimulation of PBMCs with overlapping peptides spanning the indicated proteins. Results are expressed as Spot Forming Units (SPU) relative to 1×10^6 PBMCs after subtraction of average background (calculated from duplicate unstimulated wells). Negative values after background subtraction were adjusted to zero. Participants were excluded from the dataset due to high background (>95 SFU per million PBMC). White = baseline measurement; grey = post vaccine dose 1; blue = post vaccine dose 2. Red bars represent the median of each group. Unpaired comparisons were performed using Kruskal-Wallis test with Dunn's correction for multiple comparisons. Within each of the case and control groups, responses were compared between 0 and 1, and 1 and 2 vaccine doses. Responses between groups were compared after each dose. Statistics are only displayed for comparisons where $P \leq 0.05$. P values were categorised as ≤ 0.05 (*), ≤ 0.01 (**), ≤ 0.001 (***), ≤ 0.0001 (****).



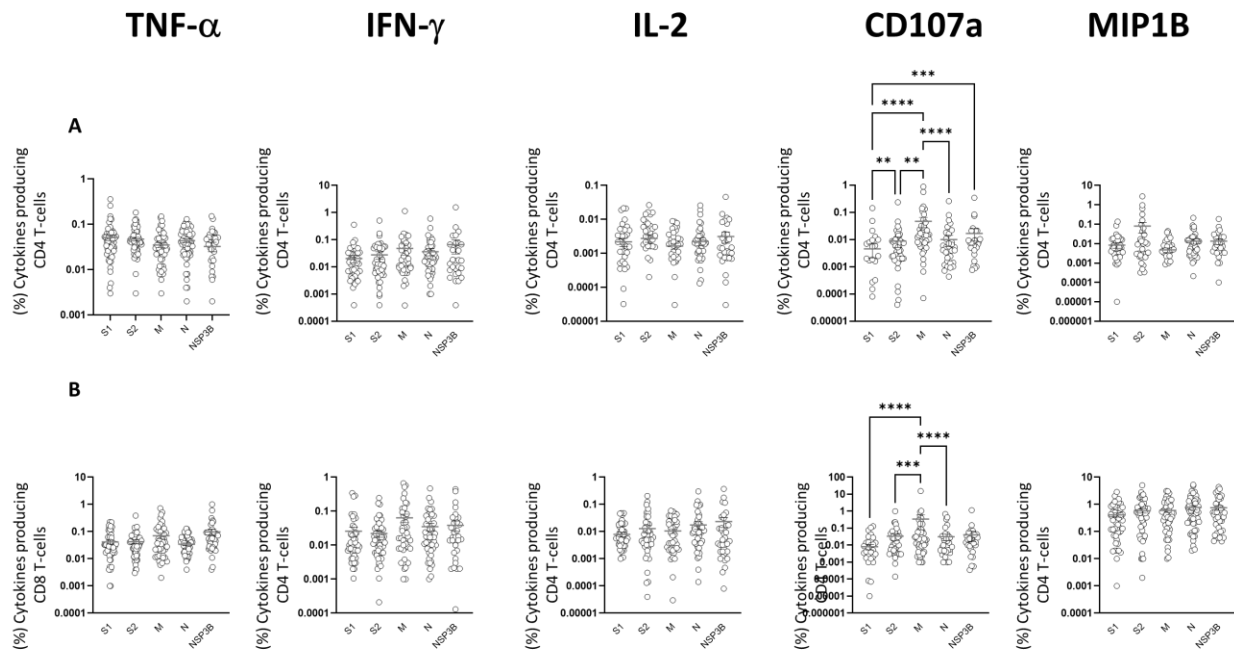
Supplementary Figure 8: Magnitude of T-cell response following COVID-19 vaccination

(A-B) Ex vivo IFN- γ ELISpot showing the overall magnitude and breadth of effector T cell responses to SARS-CoV-2 structural, (Spike (S1 and S2), M, N and E) non-structural (NSP1-2, NSP3a, NSP3B, NSP3C, NSP4, NSP5-6, NSP7-11, NSP12A, NSP12B, NSP13, NSP14 and NSP15-16) and accessory proteins (ORF 3, ORF6, ORF7 and ORF8) among cases (A)(n =108) and controls (n=132) following vaccination. Results are expressed as Spot Forming Units (SPU) relative to 1×10^6 PBMCs after subtraction of average background (calculated from duplicate unstimulated wells). Data in graph represented median T-cell response and dots represent PBMCs of each individual within the cohort. Significance was determined using a Kruskal-Wallis test with Dunn's correction for multiple comparisons.



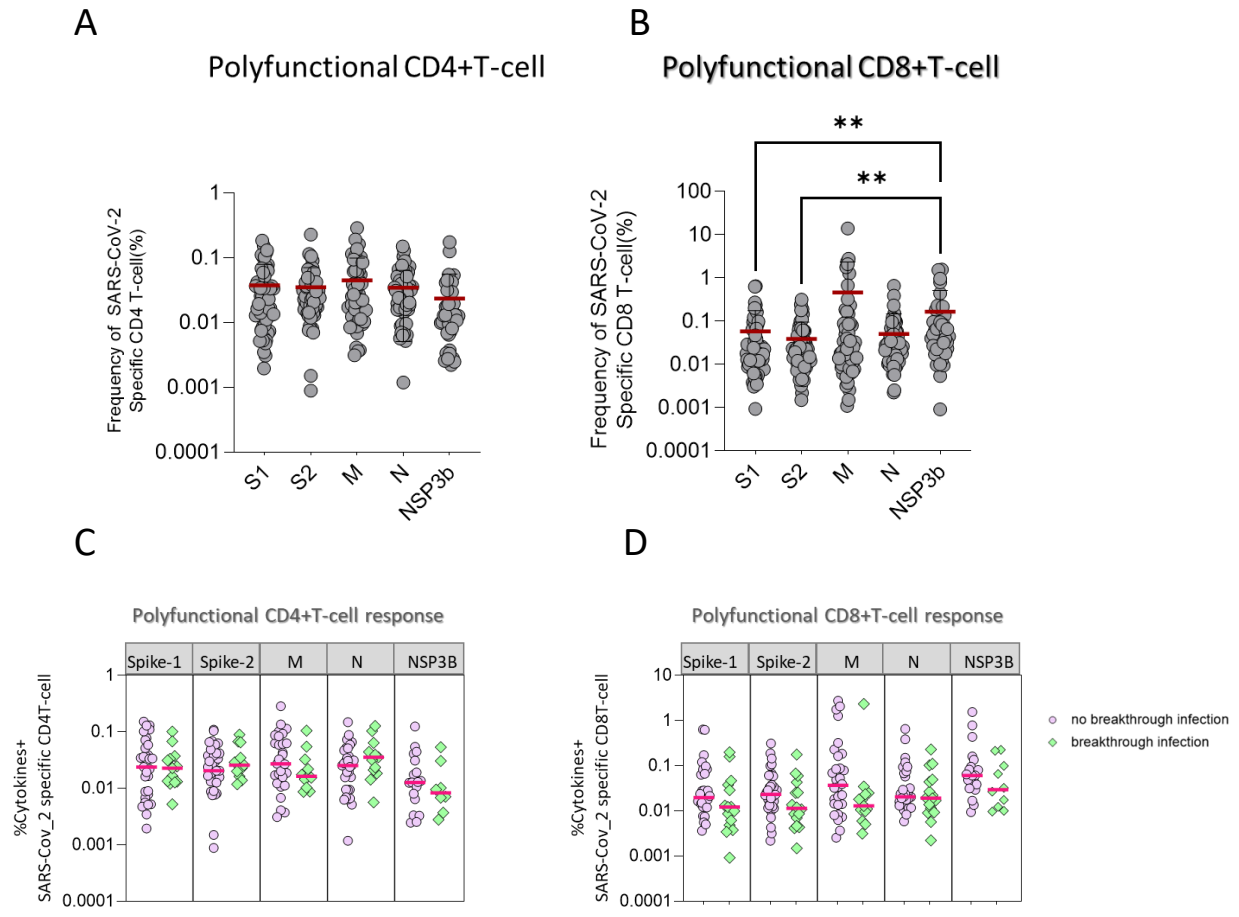
Supplementary Figure 9: Gating-strategy for the identification of SARS-CoV-2-reactive cytokine producing CD4⁺ and CD8⁺ T-cells

PBMCs were stimulated with SARS-CoV-2-overlapping-peptide-pools (Spike, M, N and NSP3B) for 6h after overnight resting. The gating strategy for CD4⁺ and CD8⁺ T-cells is shown in top panel A. Dot plots are representative of cytokines secretion by CD4⁺ T-cell (B) and CD8⁺ T-cell (C) specific for the Membrane (M) protein. These cells were further analysed for the expression of interleukin (IL) 2, interferon γ (IFN- γ), tumour necrosis factor (TNF α), MIP-1B and degranulation (CD107a) (bottom panel B-C). The unstained control and PMA/I was used as negative and positive control for ICS assay. (D) Unstained control was used to determine the background autofluorescence to set the negative population allowing cells stained with CD4⁺ and CD8⁺ to be visualized. PMA/I used a positive control for cytokine production.



Supplementary Figure 10: Frequency of Monofunctional of SARS-CoV-2-specific CD4⁺ and CD8⁺ T-cells in cases.

Cytokine production in T-cells was measured by flow cytometry and intracellular cytokine staining. Magnitude of monofunctional CD4⁺(A) and CD8⁺(B) T-cells targeting indicated SARS-CoV-2 proteins and producing IFN- γ single positive, TNF- α single positive, IL-2 single positive, MIP1 β or CD107a single positive, is shown. Significance was determined using a Kruskal-Wallis test with Dunn's correction for multiple comparisons.



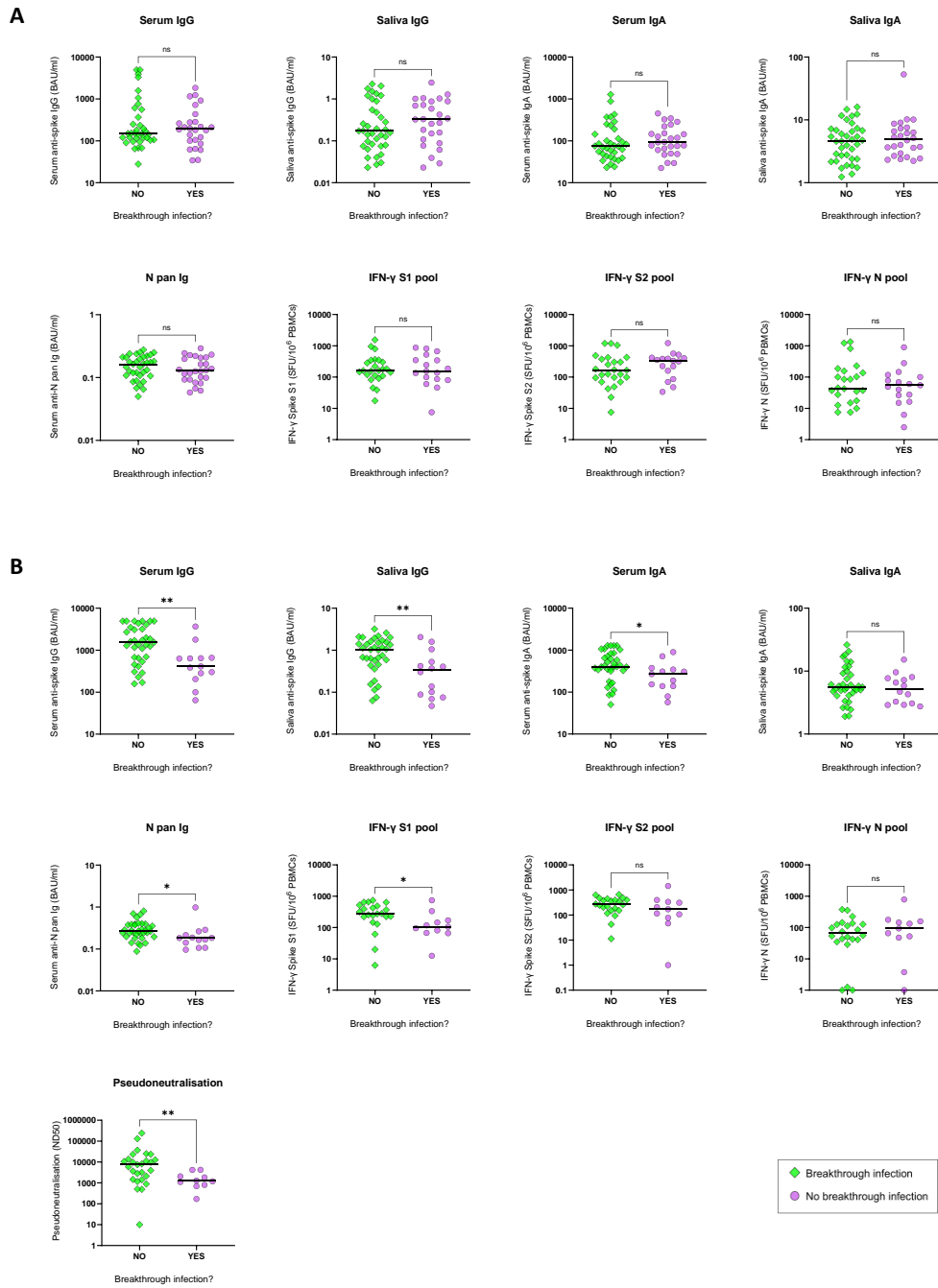
Supplementary Figure 11: Frequency of Polyfunctional SARS-CoV-2-specific CD4⁺ and CD8⁺ among COVID-19 individuals at baseline (pre-vaccination)

(A-B) Magnitude of Polyfunctional SARS-CoV-2-specific CD4⁺ (left panel) and CD8⁺ (right panel) T-cells targeting Spike and non-Spike proteins (M-N and NSP3B). Significance was determined using a Kruskal-Wallis test with Dunn's correction for multiple comparisons. (C-D) Magnitude of polyfunctional SARS-CoV-2-specific CD4⁺ (left panel) and CD8⁺ (right panel) T-cells targeting SARS-CoV-2 proteins among cases grouped by those who went on to be infected in the 8-months after the study period (yes; green diamonds and those who didn't (no; purple circles). Data in the graphs are shown as mean \pm SD. Statistics were calculated by t-test (Mann-Whitney test).

Supplementary Table 4: Characteristics of the infection susceptibility groups.

Participants were classified as cases based on a PCR-confirmed SARS-CoV-2 infection prior to their second vaccine dose, and/or positivity on the serum Spike- and or Nucleocapsid protein pan Ig screening ELISAs at clinic 1 (prior to vaccination). In each of the case and controls groups, participants were stratified into those who did and didn't self-report a SARS-CoV-2 infection in the 8 months after clinic 3 (July 2021 – March 2022).

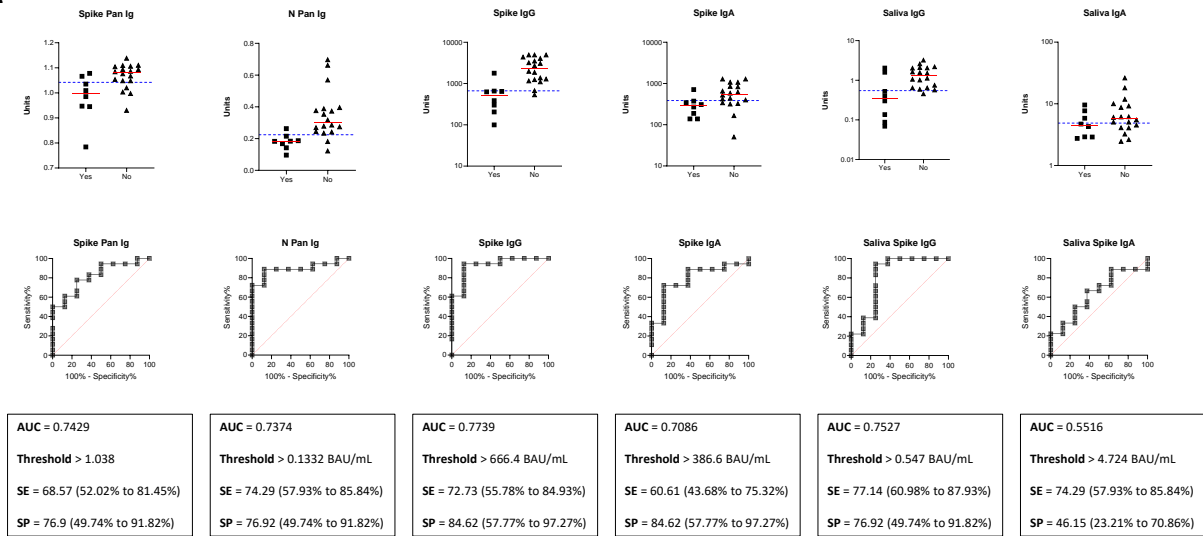
	Cases		Controls	
	Breakthrough infection	No breakthrough infection	Breakthrough infection	No breakthrough infection
Total (n)	8	18	14	19
Proportion of group reinfected (%)	30.8%	/	42.4%	/
Triple vaccinated before infection (%)	75.0%	/	78.6%	/
Female (%)	100%	72.2%	71.4%	78.9%
G0 (%)	37.5%	83.3%	100%	100%
COVID-19 vaccines dose 1&2 = mRNA (%)	75.0%	44.4%	14.3%	21.1%
Days since vaccine dose 2 (median; IQR)	50 (31-71)	40 (29-54)	50 (42-59)	41 (26-49)



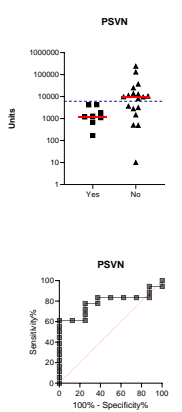
Supplementary Figure 12: Comparison of post-vaccination dose 2 antibody and T-cell levels in participants with and without a reported SARS-CoV-2 breakthrough infection.

Post-second vaccination immune responses in participants who self-reported a SARS-CoV-2 infection in the subsequent 8-months (breakthrough infection; BI) and those who didn't (no breakthrough infection). (A) SARS-CoV-2-naïve individuals with (n=18) or without (n=25) a BI. (B) Previously SARS-CoV-2-infected individuals with (n=18) or without (n=25) a BI. Bars represent the median response. Groups were compared using a Mann-Whitney test, with statistics categorised as: $P > 0.05$ (ns), $P \leq 0.05$ (*), ≤ 0.01 (**), ≤ 0.001 (***), ≤ 0.0001 (****).

A

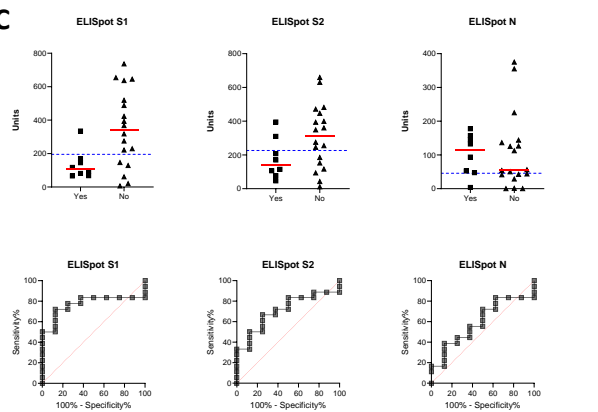


B



AUC = 0.7847
Threshold > 6165
SE = 61.11 (38.62% to 79.69%)
SP = 100.0 (67.56% to 100.0%)

C



AUC = 0.7708
Threshold > 195.6
SE = 72.2 (49.13% to 87.50%)
SP = 87.5 (52.91% to 99.36%)

AUC = 0.7083
Threshold > 226.3
SE = 66.67 (43.75% to 83.72%)
SP = 75.0 (40.93% to 95.56%)

AUC = 0.5972
Threshold > 45.63
SE = 38.89 (20.31% to 61.38%)
SP = 87.5 (52.91% to 99.36%)

Supplementary Figure 13: Breakthrough infection susceptibility threshold setting

Participants with a history of SARS-CoV-2 infection were stratified into two groups based upon whether they went on to be re-infected in the 8-month period after the study end date (yes/no). Receiver Operator Characteristic (ROC) curves were plotted for serum and saliva binding antibody measures (A), serum pseudoneutralising antibody (B), and IFN- γ producing T cells (C). Youden's index thresholds were then calculated for each individual measure and are represented by the blue dotted lines on each graph. The sensitivity and specificity parameters for each threshold are presented alongside 95% confidence intervals calculated using the Wilson/Brown method. AUC; area under curve, SE; sensitivity, SP; specificity. Yes (n=8), no (n=18).