

Supplementary Methods

Scoring of ACE

Table S1 lists the scoring ACEs in the ABCD dataset, following the scheme of Stinson et al 2021².

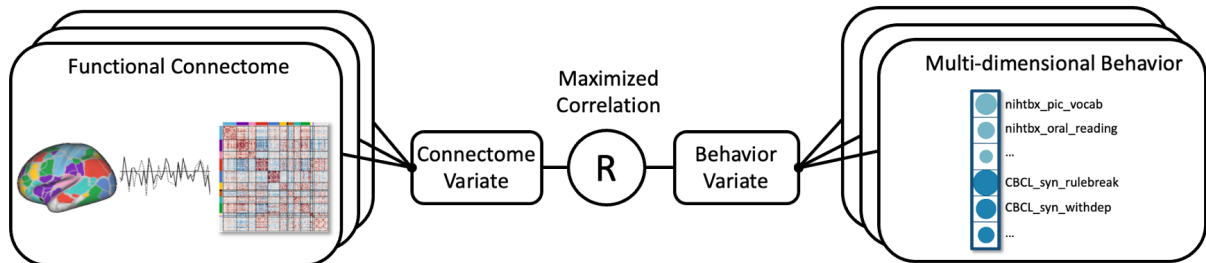
Life events included in the ACE category were: Emotion Abuse, Physical Abuse, Sexual Abuse, Domestic Violence, Traumatic Grief, Community Violence, Nature Disaster, Fire, Experience of War Zone, Experience of Terrorism, Car Accident, Other Significant Accident, Bullying, Physical Neglect, Emotional Neglect, Household Substance Use, Mental Illness in Household, Family Member Involved in Criminal Justice System, Parental Separation or Divorce, Racial or Ethnic Discrimination, and Financial Adversity. According to Sheridan & McLaughlin³, two subdimensions, *Threat* and *Deprivation*, were derived from the ACE events. *Threat* involved the experiences that were unexpected and could do harm to or threaten one's physical integrity. The *Threat* dimension score included Emotion Abuse, Physical Abuse, Sexual Abuse, Domestic Violence, Traumatic Grief, Community Violence, Nature Disaster, Fire, Experience of War Zone, Experience of Terrorism, Car Accident, Other Significant Accident, and Bullying. The *Threat* score ranged between 0-13. *Deprivation* involved the absence of expected social and cognitive environment for the children. In the current study, the *Deprivation* dimension score included Physical Neglect, Emotional Neglect, Parental Separation or Divorce, Racial or Ethnic Discrimination, and Financial Adversity. The *Deprivation* score ranged between 0-5.

Some questionnaires used for calculating ACE were missing at baseline or year-2. In those cases, year-1 data were used. The Perceived Discrimination Survey and Adverse Life Events Survey were collected yearly since year 1; therefore baseline data for the two surveys are unavailable. We used the year-1 data for the baseline assessment. The Children's Report of Parental Behavioral

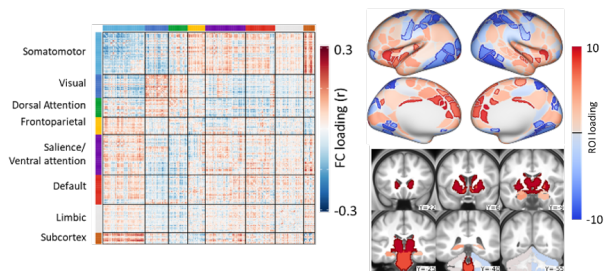
Inventory was collected at baseline and changed to bi-annually assessment since year 1; therefore year-2 data are not available. We used the year-1 data for the year-2 assessment.

Supplementary Figures and Tables

A. Scheme of Canonical Correlation Analysis



B. Loadings of the Connectome Variate



C. Loadings of the Behavior Variate

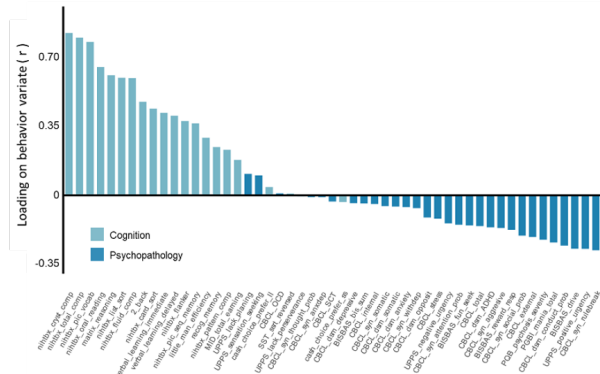


Figure S1 The connectome variate associated with cognition and mental health. A) Scheme of canonical correlation analysis (CCA). CCA was used to detect latent association between the two data sets of functional connectome and multi-dimensional behavior assessments including cognitive test and psychopathological assessments. **B) Loading of the connectome variate.** The left panel shows the functional connectivity-wise loading. The right panel shows the ROI-sum of loading, borderlines highlight ROIs showing significant positive and negative loading. **C) Loading of the behavior variate.** Figure is produced from data reported in our previous study of Xiao et al, 2023¹.

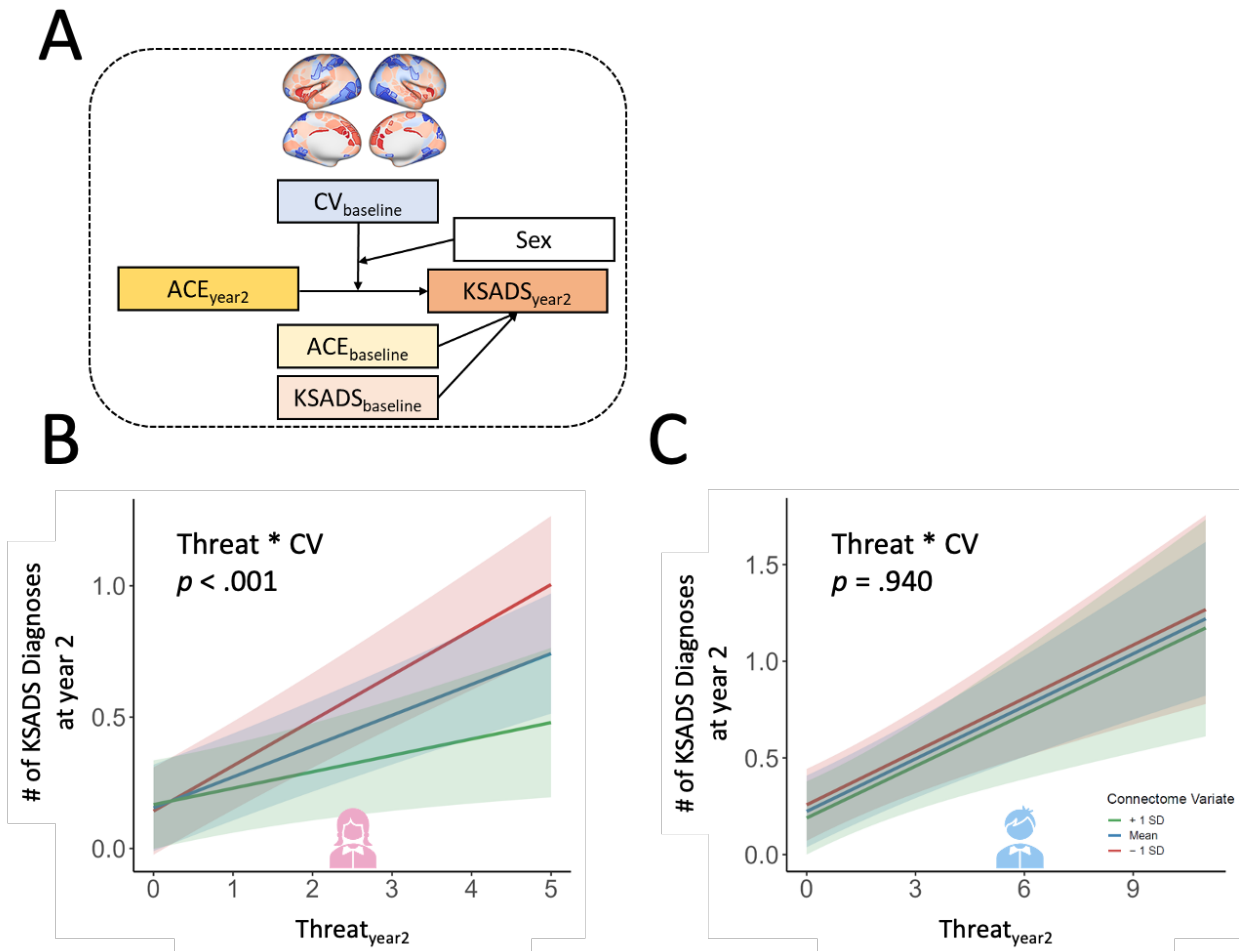
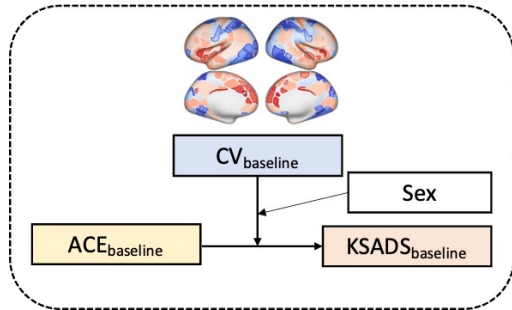
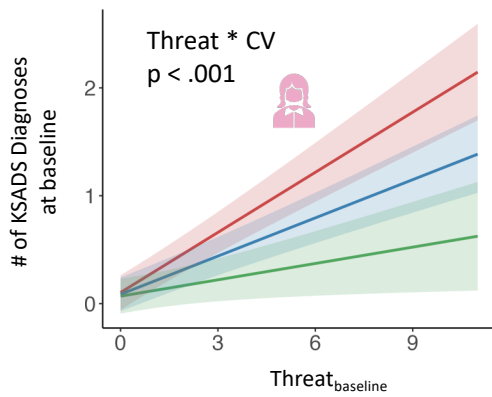


Figure S2. Sex difference in the modulation of baseline CV on the association between the change in Threat and in the number of KSADS diagnoses from baseline to year-2 follow-up. B-C) Moderation effect of CV on the association between *Threat* and number of KSADS diagnoses at year-2 follow-up in females and males, respectively, with controlling for total ACE and the number of KSADS diagnoses at baseline as covariates. Moderation graphs show the model fit and 95% CI for the mean CV and the mean \pm 1 SD.

A



B



C

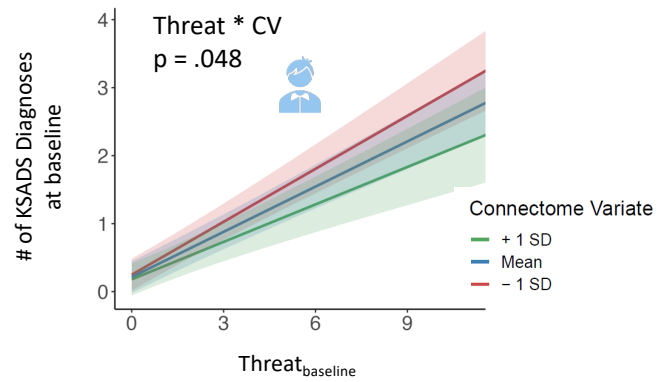


Figure S3. Sex difference in the modulation of baseline CV on the association between Threat and mental disorder diagnoses at baseline. A) Scheme of the moderation model. B-C) Moderation effect of CV on the association between Threat and number of KSADS diagnoses at baseline in females and males, respectively. Moderation graphs show the model fit and 95% CI for the mean CV and the mean \pm 1 SD.

Table S1 Scoring Scheme for Adverse Childhood Experience

Subdimension	Measurement	Criteria	Item-wise criteria	Item	
Threat	Emotional Abuse	score 1 if criteria are met for any of the questions	yes = 1; no = 0	ksads_ptsd_raw_764_p	
			yes = 1; no = 0	ksads_ptsd_raw_765_p	
	Physical Abuse	score 1 if criteria are met for any of the questions	yes = 1; no = 0	ksads_ptsd_raw_761_p	
			yes = 1; no = 0	ksads_ptsd_raw_762_p	
	Sexual Abuse	score 1 if criteria are met for any of the questions	yes = 1; no = 0	ksads_ptsd_raw_767_p	
			yes = 1; no = 0	ksads_ptsd_raw_768_p	
			yes = 1; no = 0	ksads_ptsd_raw_769_p	
	Domestic Violence	score 1 if criteria are met	yes = 1; no = 0	ksads_ptsd_raw_766_p	
	Traumatic Grief	score 1 if criteria are met	yes = 1; no = 0	ksads_ptsd_raw_770_p	
	Community Violence	score 1 if criteria are met	yes = 1; no = 0	ksads_ptsd_raw_760_p	
	Natural Disaster	score 1 if criteria are met	yes = 1; no = 0	ksads_ptsd_raw_757_p	
	Fire	score 1 if criteria are met	yes = 1; no = 0	ksads_ptsd_raw_756_p	
	Experience of War Zone	score 1 if criteria are met	yes = 1; no = 0	ksads_ptsd_raw_759_p	
	Experience of Terrorism	score 1 if criteria are met	yes = 1; no = 0	ksads_ptsd_raw_758_p	
Car Accident	score 1 if criteria are met	yes = 1; no = 0	ksads_ptsd_raw_754_p		
Other Significant Accident	score 1 if criteria are met	yes = 1; no = 0	ksads_ptsd_raw_755_p		
Bullying	score 1 if criteria are met	yes = 1; no = 0	ksads_bully_raw_26		
Deprivation	Physical Neglect	score 1 if criteria are met for any of the questions	1-2=1 ; 3-5 = 0	parent_monitor_q1_y	
			1-2=1 ; 3-5 = 0	parent_monitor_q2_y	
			1-2=1 ; 3-5 = 0	parent_monitor_q4_y	
	Emotional Neglect	Score 1 if >2 out the 5 questions meet criteria.	1 = 0; 2-3 = 1	crpbi_parent1_y	
			1 = 0; 2-3 = 1	crpbi_parent2_y	
			1 = 0; 2-3 = 1	crpbi_parent3_y	
			1 = 0; 2-3 = 1	crpbi_parent4_y	
			1 = 0; 2-3 = 1	crpbi_parent5_y	
	Racial or Ethnic Discrimination	score 1 if both criteria are met	1-2 = 0 (almost never or rarely); 3-5 = 1 (sometimes to very often)	yes = 1; No = 0	dim_yesno_q1
				1-2 = 0 (almost never or rarely); 3-5 = 1 (sometimes to very often)	dim_matrix_q1
				1-2 = 0 (almost never or rarely); 3-5 = 1 (sometimes to very often)	dim_matrix_q2
	Parental Separation or Divorce	score 1 if any of the questions meet criteria	1 = 0; 2-6 = 1	1-2 = 0 (almost never or rarely); 3-5 = 1 (sometimes to very often)	dim_matrix_q3
				1 = 0; 2-6 = 1	demo_prnt_marital_v2_l
	Financial Adversity	score 1 if any of the questions meet criteria	yes = 1; no = 0	yes = 1; no = 0	ple_separ_p
yes = 1; no = 0				ple_separ_y	
yes = 1; no = 0				demo_fam_exp1_v2_l	
yes = 1; no = 0				demo_fam_exp3_v2_l	
yes = 1; no = 0				demo_fam_exp4_v2_l	
yes = 1; no = 0				demo_fam_exp5_v2_l	
Household Substance Use	score 1 if any of the questions meet criteria	yes = 1; no = 0	yes = 1; no = 0	demo_fam_exp6_v2_l	
			yes = 1; no = 0	famhx_ss_fath_prob_dg_p	
			yes = 1; no = 0	famhx_ss_moth_prob_dg_p	
			0 = 0; 1-2 = 1	asr_q06_p	
			0 = 0; 1-2 = 1	asr_q90_p	
			yes = 1; no = 0	famhx_ss_fulsiby1_prob_dg_p	
			yes = 1; no = 0	famhx_ss_fulsiby2_prob_dg_p	
			yes = 1; no = 0	famhx_ss_fulsiby3_prob_dg_p	
yes = 1; no = 0	famhx_ss_fulsiby4_prob_dg_p				
yes = 1; no = 0	famhx_ss_fulsiby5_prob_dg_p				
yes = 1; no = 0	famhx_ss_fulsibo1_prob_dg_p				

			-yes = 1; no = 0	famhx_ss_fulsibo2_prob_dg_p
			yes = 1; no = 0	famhx_ss_fulsibo3_prob_dg_p
			yes = 1; no = 0	famhx_ss_fulsibo4_prob_dg_p
			yes = 1; no = 0	famhx_ss_hlfsiby1_prob_dg_p
			yes = 1; no = 0	famhx_ss_hlfsiby2_prob_dg_p
			yes = 1; no = 0	famhx_ss_hlfsiby3_prob_dg_p
			yes = 1; no = 0	famhx_ss_hlfsiby4_prob_dg_p
			yes = 1; no = 0	famhx_ss_hlfsiby5_prob_dg_p
			yes = 1; no = 0	famhx_ss_hlfsibo1_prob_dg_p
			yes = 1; no = 0	famhx_ss_hlfsibo2_prob_dg_p
			yes = 1; no = 0	famhx_ss_hlfsibo3_prob_dg_p
			yes = 1; no = 0	famhx_ss_hlfsibo4_prob_dg_p
			yes = 1; no = 0	famhx_ss_hlfsibo5_prob_dg_p
			yes = 1; no = 0	famhx_ss_fulsibo5_prob_dg_p
			yes = 1; no = 0	ple_sud_p
			yes = 1; no = 0	ple_sud_y
			yes = 1; no = 0	famhx_ss_fulsiby1_prob_dprs_p
			yes = 1; no = 0	famhx_ss_fulsiby2_prob_dprs_p
			yes = 1; no = 0	famhx_ss_fulsiby3_prob_dprs_p
			yes = 1; no = 0	famhx_ss_fulsiby4_prob_dprs_p
			yes = 1; no = 0	famhx_ss_fulsiby5_prob_dprs_p
			yes = 1; no = 0	famhx_ss_fulsibo1_prob_dprs_p
			yes = 1; no = 0	famhx_ss_fulsibo2_prob_dprs_p
			yes = 1; no = 0	famhx_ss_fulsibo3_prob_dprs_p
			yes = 1; no = 0	famhx_ss_fulsibo4_prob_dprs_p
			yes = 1; no = 0	famhx_ss_fulsibo5_prob_dprs_p
			yes = 1; no = 0	famhx_ss_hlfsiby1_prob_dprs_p
			yes = 1; no = 0	famhx_ss_hlfsiby2_prob_dprs_p
			yes = 1; no = 0	famhx_ss_hlfsiby3_prob_dprs_p
			yes = 1; no = 0	famhx_ss_hlfsiby4_prob_dprs_p
			yes = 1; no = 0	famhx_ss_hlfsiby5_prob_dprs_p
			yes = 1; no = 0	famhx_ss_hlfsibo1_prob_dprs_p
			yes = 1; no = 0	famhx_ss_hlfsibo2_prob_dprs_p
			yes = 1; no = 0	famhx_ss_hlfsibo3_prob_dprs_p
			yes = 1; no = 0	famhx_ss_hlfsibo4_prob_dprs_p
			yes = 1; no = 0	famhx_ss_hlfsibo5_prob_dprs_p
			yes = 1; no = 0	famhx_ss_momdad_dprs_p
			yes = 1; no = 0	famhx_ss_fulsiby1_prob_ma_p
			yes = 1; no = 0	famhx_ss_fulsiby2_prob_ma_p
			yes = 1; no = 0	famhx_ss_fulsiby3_prob_ma_p
			yes = 1; no = 0	famhx_ss_fulsiby4_prob_ma_p
			yes = 1; no = 0	famhx_ss_fulsiby5_prob_ma_p
			yes = 1; no = 0	famhx_ss_fulsibo1_prob_ma_p
			yes = 1; no = 0	famhx_ss_fulsibo2_prob_ma_p
			yes = 1; no = 0	famhx_ss_fulsibo3_prob_ma_p
			yes = 1; no = 0	famhx_ss_fulsibo4_prob_ma_p
			yes = 1; no = 0	famhx_ss_fulsibo5_prob_ma_p
			yes = 1; no = 0	famhx_ss_hlfsiby1_prob_ma_p
			yes = 1; no = 0	famhx_ss_hlfsiby2_prob_ma_p
			yes = 1; no = 0	famhx_ss_hlfsiby3_prob_ma_p
			yes = 1; no = 0	famhx_ss_hlfsiby4_prob_ma_p
			yes = 1; no = 0	famhx_ss_hlfsiby5_prob_ma_p
			yes = 1; no = 0	famhx_ss_hlfsibo1_prob_ma_p
			yes = 1; no = 0	famhx_ss_hlfsibo2_prob_ma_p
			yes = 1; no = 0	famhx_ss_hlfsibo3_prob_ma_p
			yes = 1; no = 0	famhx_ss_hlfsibo4_prob_ma_p
			yes = 1; no = 0	famhx_ss_hlfsibo5_prob_ma_p
			yes = 1; no = 0	famhx_ss_momdad_ma_p
			yes = 1; no = 0	famhx_ss_fulsiby1_prob_vs_p
			yes = 1; no = 0	famhx_ss_fulsiby2_prob_vs_p
			yes = 1; no = 0	famhx_ss_fulsiby3_prob_vs_p
			yes = 1; no = 0	famhx_ss_fulsiby4_prob_vs_p
			yes = 1; no = 0	famhx_ss_fulsiby5_prob_vs_p

		yes = 1; no = 0	famhx_ss_fulsibo1_prob_prf_p
		yes = 1; no = 0	famhx_ss_fulsibo2_prob_prf_p
		yes = 1; no = 0	famhx_ss_fulsibo3_prob_prf_p
		yes = 1; no = 0	famhx_ss_fulsibo4_prob_prf_p
		yes = 1; no = 0	famhx_ss_fulsibo5_prob_prf_p
		yes = 1; no = 0	famhx_ss_hlfsiby1_prob_prf_p
		yes = 1; no = 0	famhx_ss_hlfsiby2_prob_prf_p
		yes = 1; no = 0	famhx_ss_hlfsiby3_prob_prf_p
		yes = 1; no = 0	famhx_ss_hlfsiby4_prob_prf_p
		yes = 1; no = 0	famhx_ss_hlfsiby5_prob_prf_p
		yes = 1; no = 0	famhx_ss_hlfsibo1_prob_prf_p
		yes = 1; no = 0	famhx_ss_hlfsibo2_prob_prf_p
		yes = 1; no = 0	famhx_ss_hlfsibo3_prob_prf_p
		yes = 1; no = 0	famhx_ss_hlfsibo4_prob_prf_p
		yes = 1; no = 0	famhx_ss_hlfsibo5_prob_prf_p
		yes = 1; no = 0	famhx_ss_momdad_prf_p
		yes = 1; no = 0	famhx_ss_fulsiby1_prob_hspd_p
		yes = 1; no = 0	famhx_ss_fulsiby2_prob_hspd_p
		yes = 1; no = 0	famhx_ss_fulsiby3_prob_hspd_p
		yes = 1; no = 0	famhx_ss_fulsiby4_prob_hspd_p
		yes = 1; no = 0	famhx_ss_fulsiby5_prob_hspd_p
		yes = 1; no = 0	famhx_ss_fulsibo1_prob_hspd_p
		yes = 1; no = 0	famhx_ss_fulsibo2_prob_hspd_p
		yes = 1; no = 0	famhx_ss_fulsibo3_prob_hspd_p
		yes = 1; no = 0	famhx_ss_fulsibo4_prob_hspd_p
		yes = 1; no = 0	famhx_ss_fulsibo5_prob_hspd_p
		yes = 1; no = 0	famhx_ss_hlfsiby1_prob_hspd_p
		yes = 1; no = 0	famhx_ss_hlfsiby2_prob_hspd_p
		yes = 1; no = 0	famhx_ss_hlfsiby3_prob_hspd_p
		yes = 1; no = 0	famhx_ss_hlfsiby4_prob_hspd_p
		yes = 1; no = 0	famhx_ss_hlfsiby5_prob_hspd_p
		yes = 1; no = 0	famhx_ss_hlfsibo1_prob_hspd_p
		yes = 1; no = 0	famhx_ss_hlfsibo2_prob_hspd_p
		yes = 1; no = 0	famhx_ss_hlfsibo3_prob_hspd_p
		yes = 1; no = 0	famhx_ss_hlfsibo4_prob_hspd_p
		yes = 1; no = 0	famhx_ss_hlfsibo5_prob_hspd_p
		yes = 1; no = 0	famhx_ss_momdad_hspd_p
		yes = 1; no = 0	famhx_ss_fulsiby1_prob_scd_p
		yes = 1; no = 0	famhx_ss_fulsiby2_prob_scd_p
		yes = 1; no = 0	famhx_ss_fulsiby3_prob_scd_p
		yes = 1; no = 0	famhx_ss_fulsiby4_prob_scd_p
		yes = 1; no = 0	famhx_ss_fulsiby5_prob_scd_p
		yes = 1; no = 0	famhx_ss_fulsibo1_prob_scd_p
		yes = 1; no = 0	famhx_ss_fulsibo2_prob_scd_p
		yes = 1; no = 0	famhx_ss_fulsibo3_prob_scd_p
		yes = 1; no = 0	famhx_ss_fulsibo4_prob_scd_p
		yes = 1; no = 0	famhx_ss_fulsibo5_prob_scd_p
		yes = 1; no = 0	famhx_ss_hlfsiby1_prob_scd_p
		yes = 1; no = 0	famhx_ss_hlfsiby2_prob_scd_p
		yes = 1; no = 0	famhx_ss_hlfsiby3_prob_scd_p
		yes = 1; no = 0	famhx_ss_hlfsiby4_prob_scd_p
		yes = 1; no = 0	famhx_ss_hlfsiby5_prob_scd_p
		yes = 1; no = 0	famhx_ss_hlfsibo1_prob_scd_p
		yes = 1; no = 0	famhx_ss_hlfsibo2_prob_scd_p
		yes = 1; no = 0	famhx_ss_hlfsibo3_prob_scd_p
		yes = 1; no = 0	famhx_ss_hlfsibo4_prob_scd_p
		yes = 1; no = 0	famhx_ss_hlfsibo5_prob_scd_p
		yes = 1; no = 0	famhx_ss_momdad_scd_p
		t>63 = 1; t<=63 = 0;	asr_scr_depress_t
		t>63 = 1; t<=63 = 0;	asr_scr_anxdisord_t
		t>63 = 1; t<=63 = 0;	asr_scr_avoidant_t
		t>63 = 1; t<=63 = 0;	asr_scr_adhd_t
		t>63 = 1; t<=63 = 0;	asr_scr_antisocial_t

	Family member involved in criminal justice system	score 1 if any of the questions meet criteria	yes = 1; no = 0	ple_arrest_p
			yes = 1; no = 0	ple_law_p
			yes = 1; no = 0	ple_jail_p

Reference

1. Xiao X, Hammond C, Salmeron BJ, et al. Brain Functional Connectome Defines a Transdiagnostic Dimension Shared by Cognitive Function and Psychopathology in Preadolescents. *Biological Psychiatry*. Published online September 26, 2023. doi:10.1016/j.biopsych.2023.08.028
2. Stinson EA, Sullivan RM, Peteet BJ, et al. Longitudinal Impact of Childhood Adversity on Early Adolescent Mental Health During the COVID-19 Pandemic in the ABCD Study Cohort: Does Race or Ethnicity Moderate Findings? *Biological Psychiatry Global Open Science*. 2021;1(4):324-335. doi:10.1016/j.bpsgos.2021.08.007
3. Sheridan MA, McLaughlin KA. Dimensions of early experience and neural development: Deprivation and threat. *Trends in Cognitive Sciences*. 2014;18(11):580-585. doi:10.1016/j.tics.2014.09.001