

Detecting transdiagnostic retinal deviations in mental disorders through normative modeling

Foivos Georgiadis, MD, MSc^{1,4}, Nils Kallen, MD¹, Giacomo Cecere, MD¹, Daniel Barthelmes, MD, PhD², Matthias Kirschner, MD³⁺, Philipp Homan, MD, PhD^{1,4+*}

¹ Department of Adult Psychiatry and Psychotherapy, Psychiatric Hospital, University of Zurich, Zurich, Switzerland.

² Department of Ophthalmology, University Hospital Zurich, University of Zurich, Zurich, Switzerland.

³ Division of Adult Psychiatry, Department of Psychiatry, Geneva University Hospitals, Geneva, Switzerland.

⁴ Neuroscience Center Zurich, University of Zurich and ETH Zurich, Zurich, Switzerland.

+ Equal contribution

* Correspondence concerning this article should be addressed to Prof. Philipp Homan, MD, PhD, Department of Adult Psychiatry and Psychotherapy, Psychiatric Hospital, University of Zurich, Lenggstrasse 31, 8032 Zurich, Switzerland. Email: philipp.homan@bli.uzh.ch

Abstract

The retina is a sensitive indicator of central nervous system integrity, which can be efficiently examined with optical coherence tomography. Using data from the UK Biobank, we computed normative models of age-related retinal thinning in a mid-to-late life control sample (N = 56,677) to estimate retinal deviations in schizophrenia (N = 178), bipolar disorder (N = 266), and major depression (N = 105). We hypothesized that retinal thickness deviations from normative age-related thinning would parallel brain alterations, with SZ showing the most pronounced changes. Across diagnostic groups, significant negative deviations, driven by schizophrenia and to a lesser extent bipolar disorder, were found in macular thickness and ganglion cell-interstitial plexiform layer thickness but not in retinal nerve fiber layer thickness. While female individuals appeared to show stronger deviations overall, this effect did not reach statistical significance. Using the largest optical coherence tomography sample to date, we demonstrate transdiagnostic deviations in retinal thickness, predominantly in schizophrenia and bipolar disorder, but not major depression. Our findings underscore the utility of normative modeling for precise, personalized assessments in psychiatric disorder endophenotypes, particularly retinal thickness.

Introduction

The retina is a sensitive substrate of central nervous system (CNS) integrity which can be efficiently examined with optical coherence tomography (OCT)¹⁻³. Previous studies have found retinal aberrations in individuals with schizophrenia (SZ) but were limited by their sample-size to make direct transdiagnostic comparisons or attempt a comprehensive modeling of normative age-related retinal thinning.² Here, we used normative modeling⁴ of a large healthy control (HC) sample and a sizeable patient population of the UK Biobank⁵ and estimated transdiagnostic retinal deviations from normative retinal thinning in SZ, Bipolar Disorder (BD) and Major Depression (MD). We hypothesized that deviations in retinal thickness would mirror brain alterations, with SZ showing the most pronounced changes, followed by BD and MD⁶.

Methods

We considered the thicknesses of the macula (MT), the retinal nerve fiber layer (RNFL), and the ganglion cell-interstitial plexiform layer (GC-IPL) from 57,226 individuals (54.8% female; Table 1) of the UK Biobank without diagnosed eye disorders, with complete OCT imaging, and with information on confounding variables (including image quality, degree of macular centeredness, socioeconomic status, and BMI and smoking status as cardiometabolic factors). We statistically adjusted for these variables by analyzing the residuals of a simple linear regression model in all downstream analyses. We excluded influential outlier values using an interquartile range (IQR) trimming approach, where observations above or beyond 4 IQRs were considered unreliable and excluded (MT: N = 653; RNFL: N = 323; GC-IPL: N = 527). The final sample included a mid-to-late life HC group (N = 56,677; based on whom the normative models of mean and variance were estimated with the R package *gamlss*⁴); individuals with SZ (N = 178); BD (N = 266), and MD (N = 105). We created sex- and laterality-specific normative models of age effects on MT, RNFL and GC-IPL (Figure 1). Subsequently, we computed individual deviations (z-scores) across diagnostic groups, which we averaged across the left and right eye, and compared them between sexes and diagnoses.

Results

As shown in Figure 1, there were covariate-adjusted deviations across diagnostic groups in macular thickness ($z = -0.22$, CI = [-0.29, -0.11], $P < 0.0001$) and GC-IPL ($z = -0.16$, CI = [-0.25, -0.07], $P < 0.0001$), but not RNFL ($z = -0.03$, CI = [-0.12, 0.06], $P = 0.53$). Sex-specific effects for these retinal thickness deviations did not reach statistical significance (all $P > 0.2$). MT deviations were driven by SZ ($z = -0.34$, CI = [-0.47, -0.21], $P < 0.0001$) and BP ($z = -0.13$, CI = [-0.25, -0.01], $P = 0.03$), with a significant group difference between the two ($\Delta z = 0.20$, CI = [0.04, 0.36], $P = 0.003$). There was no evidence for MT deviations in MD ($z = -0.01$, CI = [-0.26, 0.24], $P = 0.96$). In contrast, in GC-IPL deviations were significant for SZ ($z = -0.20$, CI = [-0.34, -0.06], $P = 0.004$) and BD ($z = -0.15$, CI = [-0.29, -0.01], $P = 0.02$) but not MD ($z = -0.04$, CI = [-0.30, 0.21], $P = 0.73$), with no evidence for a group difference between SZ and BD ($\Delta z = 0.11$, CI = [-0.05, 0.27], $P = 0.16$).

Discussion

Leveraging normative modeling of the biggest OCT sample to date, we provide evidence for transdiagnostic deviations from normative retinal thickness across mid-to-late life, largely driven by SZ and BD but not MD. Our individualized approach suggested that these deviations are more pronounced in SZ than BD. While this study was cross-sectional, the results highlight the transdiagnostic utility of normative modeling for precise and personalized measurements in putative endophenotypes of psychiatric disorders such as retinal thickness.

Data and Code availability

All data analyzed in this study are available through the UK Biobank (<http://www.ukbiobank.ac.uk/>). All code will be made freely available after publication to ensure reproducibility at <https://github.com/homanlab/>.

Disclosures

PH has received grants and honoraria from Novartis, Lundbeck, Takeda, Mepha, Janssen, Boehringer Ingelheim, Neurolite outside of this work. No other conflicts of interest were reported.

References

1. Wagner SK, Cortina-Borja M, Silverstein SM, et al. Association Between Retinal Features From Multimodal Imaging and Schizophrenia. *JAMA Psychiatry* 2023; 80: 478–487.
2. Komatsu H, Onoguchi G, Silverstein SM, et al. Retina as a potential biomarker in schizophrenia spectrum disorders: a systematic review and meta-analysis of optical coherence tomography and electroretinography. *Molecular Psychiatry* 2023 29:2 2023; 29: 464–482.
3. Rabe F, Smigielski L, Georgiadis F, et al. Genetic susceptibility to schizophrenia through neuroinflammatory pathways is associated with retinal thinning: Findings from the UK-Biobank. *medRxiv* 2024; 2024.04.05.24305387.
4. Ge R, Yu Y, Qi YX, et al. Normative modelling of brain morphometry across the lifespan with CentileBrain: algorithm benchmarking and model optimisation. *Lancet Digit Health* 2024; 6: e211.
5. Bycroft C, Freeman C, Petkova D, et al. The UK Biobank resource with deep phenotyping and genomic data. *Nature* 2018; 562: 203.
6. Thompson PM, Jahanshad N, Ching CRK, et al. ENIGMA and global neuroscience: A decade of large-scale studies of the brain in health and disease across more than 40 countries. *Translational Psychiatry* 2020 10:1 2020; 10: 1–28.

Figure 1

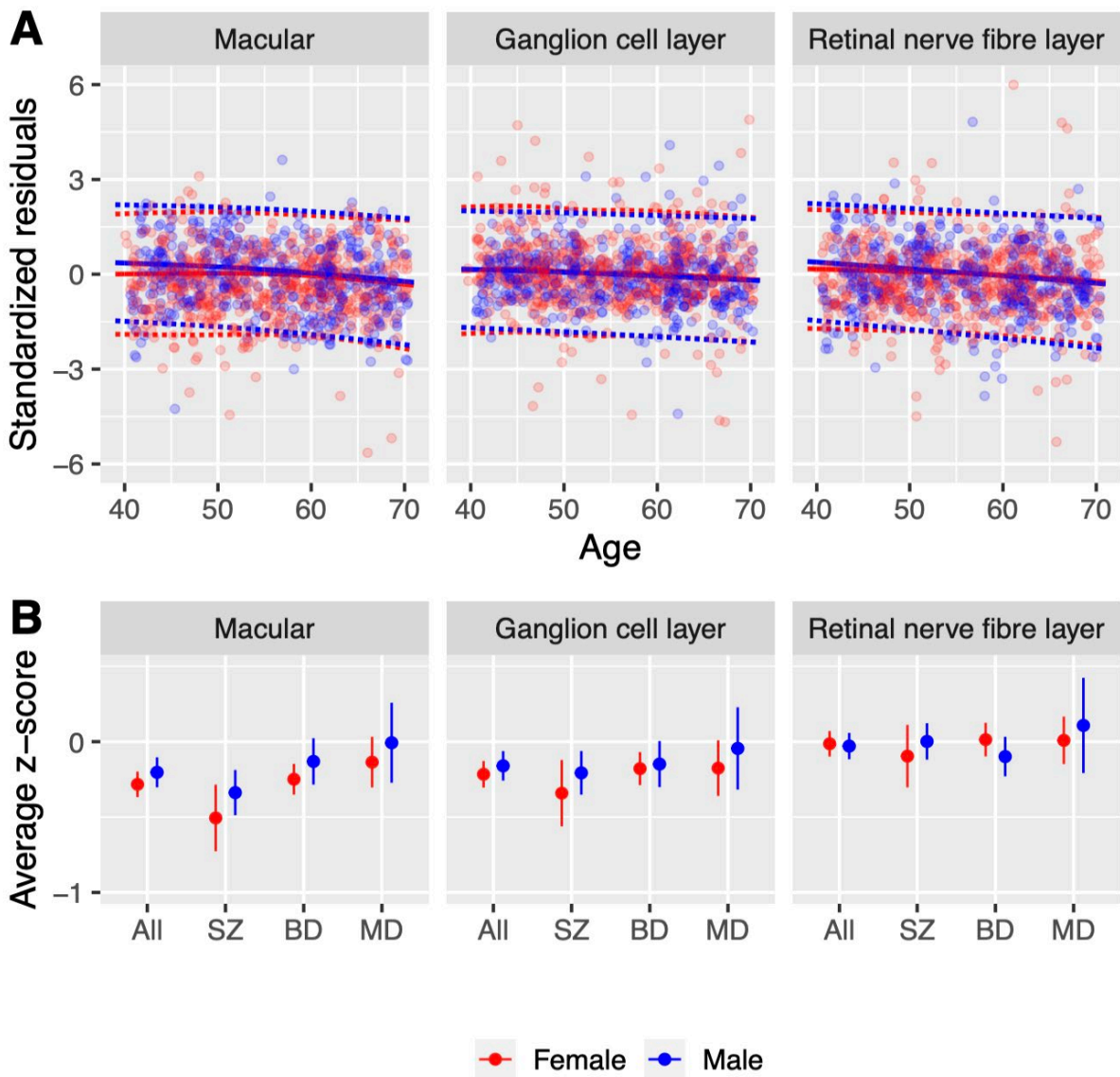


Figure 1. A. Normative age-related curves estimated from healthy control females (red) and males (blue) for macular thickness, retinal nerve fiber layer thickness and ganglion cell-interstitial plexiform layer thickness. Transdiagnostic deviations for patients are overlaid on the normative curves as individual data points. The 50th centile curves for healthy females and males are shown in solid red and blue lines, respectively, with 2.5th and 97.5th centile boundaries indicated by dashed lines of the corresponding color. **B.** Sex-stratified average deviations from the normative mean ($z\text{-score} = 0$), with error bars indicating 95% confidence intervals, for macular thickness, retinal nerve fiber layer thickness, and ganglion cell-interstitial plexiform layer thickness, for the transdiagnostic sample combined and for schizophrenia (SZ), bipolar disorder (BD), and major depressive disorder (MD) as separate groups. Error bars not touching the zero line indicate a $z\text{-score}$ that is significantly different from zero.

Table 1. Sample characteristics

Characteristic	HC		SZ		BD		MD	
	N	Mean (SD)	N	Mean (SD)	N	Mean (SD)	N	Mean (SD)
Age	56677	56.91 (8.14)	178	55.3 (8.41)	266	55.49 (8.28)	105	56.91 (8.14)
Females	31018 (54.7%)	-	75	-	162	-	75	-
Males	25659 (45.8%)	-	103	-	104	-	30	-
Smoking:		-		-		-		-
- Current	5416		44		48		23	
- Never	31661		77		120		41	
- Previous	19426		55		98		41	
- Prefer not to answer	174		2		-		-	
Townsend Deprivation Index	56677	-1.08 (2.95)	178	0.21 (3.62)	266	-0.18 (3.41)	105	-1.08 (2.95)
Body Mass Index	56677	27.25 (4.72)	178	27.92 (5.96)	266	28.3 (5.3)	105	27.25 (4.72)
Overall Macular Thickness (R)	56677	277.05 (24.66)	178	274.06 (37.04)	266	274.95 (16.5)	105	277.05 (24.66)
Overall Macular Thickness (L)	56677	274.63 (23.74)	178	267.71 (42.76)	266	271.8 (18.47)	105	274.63 (23.74)
RNFL Thickness (R)	56677	29.67 (8.23)	178	30.55 (12.34)	266	29.44 (6.33)	105	29.67 (8.23)
RNFL Thickness (L)	56677	27.03 (7.54)	178	26.48 (6.55)	266	26.79 (5.55)	105	27.03 (7.54)
GC-IPL Thickness (R)	56677	73.99 (9.42)	178	72.8 (12.65)	266	73.1 (6.64)	105	73.99 (9.42)
GC-IPL Thickness (L)	56677	73.88 (8.97)	178	71.56 (10.85)	266	72.81 (6.87)	105	73.88 (8.97)
QC Image Quality (R)	56677	65.07 (12.94)	178	66.05 (12.12)	266	65.29 (13.02)	105	65.07 (12.94)
QC Image Quality (L)	56677	65.59 (12.67)	178	66.51 (11.69)	266	66.66 (11.8)	105	65.59 (12.67)

QC Macular Center Alignment (R)	56677	252.91 (21.16)	178	255.68 (25.67)	266	255.14 (17.06)	105	252.91 (21.16)
QC Macular Center Alignment (L)	56677	259.33 (26.53)	178	264.36 (35.83)	266	258.05 (26.99)	105	259.33 (26.53)

