

1 Feasibility and cross-cultural validation of an 2 adapted social skills group training programme 3 (KONTAKT™ CHILD) for Chinese autistic 4 children: a wait-list RCT protocol

5 Authors and Affiliations

6 Uchong Lao^{1†} · Huilin Zhu^{1*} · Fengjing Liang¹ · Enid Wuxia Bai¹² · Peipei Yin¹ · Xiaoqian Huang¹ ·
7 Sonya Girdler²³ · Sven Bölte²³⁴ · Xiaobing Zou^{1*}

8 ¹ Child Development and Behavior Center, The Third Affiliated Hospital, Sun Yat-Sen University,
9 China, 2693 Kai Chuang Avenue, Huangpu District, Guangzhou, 510530, China

10 ² Curtin Autism Research Group, School of Allied Health, Curtin University, Kent Street, Bentley,
11 Perth, Western Australia

12 ³ Center of Neurodevelopmental Disorders (KIND), Centre for Psychiatry Research, Division of
13 Neuropsychiatry, Department of Women's and Children's Health, Karolinska Institutet &
14 Stockholm Health Care Services, Region Stockholm, Stockholm, Sweden

15 ⁴ Child and Adolescent Psychiatry, Stockholm Health Care Services, Region Stockholm, Stockholm,
16 Sweden

17

18

19 **NOTE: This preprint reports new research that has not been certified by peer review and should not be used to guide clinical practice.**

20 † Equal contributions

21 * Corresponding authors

22 ORCID ID:

23 Uchong Lao: 0000-0001-8658-880X

24 Huilin Zhu: 0000-0002-1052-708X

25 Sonya Girdler: 0000-0001-7992-0800

26 Sven Bölte: 0000-0002-4579-4970

27

28 **Corresponding authors information:**

29 **Huilin Zhu**

30 Email: zhuhlin6@mail.sysu.edu.cn

31

32 **Xiaobing Zou**

33 Email: zouxb@mail.sysu.edu.cn

34

35 **Abstract**

36 **Introduction**

37 School-aged autistic children commonly experience social communication and interaction
38 challenges in their everyday lives. While international evidence suggests that social skills group
39 training (SSGT) programmes can support autistic children, improving their psycho-social
40 functioning, to date there is no standardised evidence-based SSGT tailored towards the needs of
41 autistic children aged 8 to 12 years living in the Chinese Mainland. Therefore, this study will
42 evaluate the feasibility, acceptability, as well as preliminary efficacy, and cost-effectiveness of a
43 culturally-adapted 16-session version of the social skills programme KONTAKT™ in Chinese
44 autistic children.

45 **Methods and analysis**

46 This study will employ a randomised, single-blinded, wait-list controlled feasibility design
47 with 36 Chinese autistic children aged 8 to 12 years with Intelligence Quotient over 70 referred to
48 the Child Development Behaviour Centre, in Guangzhou, China. Participants will be randomly
49 assigned to either the immediate training group or the delayed training group stratified by sex.
50 Feasibility will be assessed using quantitative and qualitative data obtained from the KONTAKT™
51 CHILD participants, their parents, and facilitators of the programme. Preliminary efficacy and
52 cost-effectiveness are assessed via quantitative data obtained at five time points. The primary
53 outcome is participants' improvement in social skills as measured by the Contextual Assessment of
54 Social Skills (CASS). Other outcomes include parents' and teachers' reports of participants' autistic

55 traits and adaptive functioning, participants' self-report and projective tests for self-assertiveness
56 and psycho-social functioning, and parent reports on parental reflective functioning and perceived
57 school support. Common process factors and their effects on outcomes will also be explored.
58 Cost-effectiveness will consider both societal and healthcare perspectives.

59 **Ethics and dissemination**

60 The current study protocol has been reviewed and ethics approval has been obtained from the
61 Ethical Board Committee at the Third Affiliated Hospital of Sun Yat-sen University (II2023-119-01).
62 The trial was pre-registered in Chinese Clinical Trials (ChiCTR2300072136) on 2023 June 05. The
63 results of this trial will be actively disseminated through peer-reviewed publications and conference
64 presentations. Any identifiable personal information will be anonymised to protect confidentiality.

65 **Protocol version**

66 1.0, 2023 March 02

67 **Keywords**

68 Social skills group training; Children; KONTAKT™; Cross-cultural adaptation; Feasibility; Autism;
69 Chinese

70 **Strengths and limitations of this study**

- 71 ●Comprehensive assessment of diverse outcomes via multiple informants.
- 72 ●Systematic cultural adaptation using the Integrative Cultural Adaptation Framework (ICAF)

- 73 ensuring the appropriateness of the Chinese version of KONTAKT™.
- 74 ●Collect data on readiness for change, providing insights into “help-seeker” effects.
- 75 ●Limited generalisability due to a single study site, location-specific inclusion, and absence of an
- 76 active comparator.
- 77 ●Given the absence of previous research examining the efficacy of SSGT programs in autistic
- 78 children in the Chinese Mainland, this study is appropriately a feasibility study. As such, only
- 79 the preliminary efficacy of KONTAKT™ with this population in a small sample will be
- 80 examined. The small sample size will limit the power of the study in examining the effect of
- 81 moderators on the study outcomes.

82 **Introduction**

83 **Background and rationale**

84 Autism¹ is a neurodevelopmental condition characterised by persistent challenges in
85 reciprocal social interaction and communication [1]. Autistic children often struggle to comply with
86 social expectations and norms of communication and interaction, impacting their functioning in
87 everyday contexts [2]. The estimated prevalence of autism among children aged 6 to 12 in the
88 Chinese Mainland is 0.7% (~ 1 in 143 children) and nearly half of all autistic children attend
89 mainstream schools [3]. While there is limited research investigating the experiences of these
90 children, their families and teachers, there is a clear and urgent need for evidence-based
91 interventions aiming to support the social competence and well-being of Chinese autistic children in
92 their everyday lives.

93 Internationally, Social Skills Group Training (SSGT) programmes are demonstrating efficacy in
94 supporting verbal and cognitively able school-aged autistic children in developing their social skills
95 [4, 5, 6]. SSGTs facilitate socio-emotional development and promote well-being in autistic children
96 by explicitly and implicitly supporting autistic children in interacting with peers and participating in
97 society more broadly [7]. SSGTs also leverage the benefits of learning in a group, with
98 opportunities for peer learning and support. Multiple meta-analyses of randomised controlled trials
99 (RCTs) evaluating the efficacy of these programmes in autistic youth report moderate to large effect
100 sizes in achieving personally meaningful social goals, enhancing social skills, social skills

¹ Herein, identity-first language is used since this is the endorsed terminology among autistic advocates (Kenny, 2016).

101 knowledge, social participation, and social functioning [4, 8, 9, 10].

102 While there has been considerable investigation on the proximal intervention outcomes of
103 SSGT programmes in autistic children and adolescents and post-test and short-term follow-up
104 periods, there has been limited focus on longer-term outcomes and the generalisation of learnt skills
105 to everyday contexts such as schools. Further, with few exceptions, the outcomes of these
106 programmes have been largely assessed by parents. This is of particular concern given that most
107 study designs have not employed single-blinded observation of outcome measures [4, 8]. Results
108 from previous meta-analyses [4, 8, 11, 12] infer that improvements observed in parent and clinical
109 ratings were primarily related to increased social skills knowledge or specific task-related skills,
110 rather than assessments of the generalisation of skills to everyday contexts [8].

111 SSGT programmes have also been criticised for failing to consider the view of autistic
112 youth themselves in the design and delivery of the programmes [13]. While capturing and
113 accounting for the views of autistic young people may require effort, given their communication
114 challenges [14], increasingly autistic advocates and the Autistic community are calling for
115 researchers and clinicians to consider and incorporate their views in clinical interventions [15]. It is
116 also likely that co-producing SSGT with individuals with lived experience will enhance the efficacy
117 of these programmes in relation to the intended target group [16]. Further, given the inherent
118 challenges experienced by autistic children in understanding social interactions and emotional
119 content, questions have been raised regarding the validity and accuracy of self-report questionnaires
120 aiming to evaluate the impact of SSGT programmes on these children [17]. Despite these cautions,
121 findings from a recent meta-analysis suggest that the emotional self-awareness of school-aged

122 autistic children is comparable to their non-autistic peers [18]. It seems plausible that approaches
123 tailored to the communication needs and preferences of autistic children will be more successful in
124 gathering their perspectives [19]. Further, while unusual in SSGT or autism research context,
125 validated non-verbal psychometric assessments, such as the Draw-A-Person Test [DAPT] [20, 21],
126 may be a worthwhile tool for understanding children's psycho-social functioning [22, 23, 24].

127 Methodological limitations of previous SSGT efficacy studies include a failure to consider
128 common process factors [25]. Process factors are elements that are inherently present in receiving
129 and delivering a health intervention, that unfold progressively throughout its delivery and include
130 participants' expectations, willingness to participate, and the alliance between participants and
131 facilitators. While a significant proportion of SSGT studies have reported programme adherence
132 and satisfaction [8], the data obtained by these studies were largely descriptive and failed to
133 systematically examine the impact of process factors in relation to intervention outcomes [25].

134 The KONTAKT™ programme is a well-established SSGT designed for autistic children
135 and adolescents with and without cooccurring conditions [26]. Originating in Germany [27], it has
136 now been further developed, standardised, culturally adapted, and evaluated in Sweden [28, 29] and
137 Australia [30]. Three session-length variants (24-session, 16-session, and 12-session) have been
138 standardised and evaluated through RCTs, demonstrating efficacy and effectiveness in improving
139 participants' social functioning, adaptive functioning, emotional well-being, emotion recognition
140 and regulation, as well as accomplishment of personally-meaningful social goals [28, 29, 30].
141 Findings across these studies suggest that KONTAKT™ may be particularly beneficial to autistic
142 teenagers and girls. Moreover, both quantitative and qualitative data support the conclusion that

143 KONTAKT™ is effective, safe, and well-received by autistic youth [28, 29, 30, 31, 32].

144 To our knowledge, while a standardised SSGT programme PEERS® has been tailored for
145 use with Chinese autistic adolescents [33], there is no culturally standardised SSGT programme
146 specifically tailored toward the needs of autistic children years in the Chinese Mainland. With its
147 diverse, individualised, and naturalistic session design [26], it is anticipated that KONTAKT™ will
148 effectively support the social functioning and well-being of Chinese autistic children, provided the
149 context of Chinese culture and its associated social norms are incorporated [34].

150 Cultural adaptation involves systematically modifying an evidence-based intervention to
151 align with the target population’s needs, values, languages, conditions, and customs [35, 36, 37].
152 However, only a few cultural adaptation studies on SSGT have well-documented and theoretically
153 based methodologies. Moreover, previous SSGT efficacy studies generally lacked input from the
154 target population, despite language translation and the inclusion of culturally relevant content [6].

155 Ignoring cultural differences can significantly hamper the effectiveness of evidence-based
156 SSGTs for autistic individuals [34]. Given the core characteristics of autism involve social
157 interaction and communication, social-ecological differences across cultures will undoubtedly
158 influence interpretations of “functioning” and “disorder” in autism [38]. Cultural factors also impact
159 established expectations and interactions between families and service providers, and between
160 service providers in various sectors including healthcare, education, and the broader community [39,
161 40, 41].

162 For example, Chinese parents are unlikely to disclose their child’s autism diagnosis to
163 school, reflecting the limited collaboration between family-school, prevailing autism stereotypes

164 and fears regarding stigma [42]. Moreover, Chinese autistic children are commonly not informed of
165 their autism diagnosis, with the majority of parents choosing not to disclose the diagnosis to them
166 [43]. There are also clear differences in the prevailing service delivery paradigms relevant to
167 supporting autistic children in the Chinese Mainland compared to many Western countries. Service
168 delivery in the Chinese Mainland is significantly impacted by a large population, and limited health
169 professionals and public health services [44, 45]. Unlike many Western countries, where funding
170 and child health services for autistic children are commonly provided by governmental departments,
171 the Chinese Mainland relies primarily on parents to cover these costs [46].

172 While there are various cultural adaptation frameworks guiding the alignment of health
173 interventions with the needs of a target population [35, 36, 47, 48], despite some methodological
174 distinctions, they share many similarities. In aligning the KONTAKT™ SSGT programme with the
175 needs of autistic children living in the Chinese Mainland, this study adopts the integrative cultural
176 adaptation framework (ICAF) [35]. The ICAF involves five stages: information gathering,
177 preliminary design, preliminary efficacy testing, refinement, and final trial. This study focuses on
178 the first four stages of the ICAF, in preparing for final evaluation trial (the last stage).

179 **Objectives and hypotheses**

180 The overarching purpose of the present study is to assess the feasibility and cross-cultural
181 validity of the adapted 16-session version of the KONTAKT™ CHILD programme for Chinese
182 autistic children in preparation for a larger RCT trial. The specific objectives are:

183 1. Evaluating the integration of KONTAKT™ CHILD programme into a tertiary

- 184 hospital's routine activity;
- 185 2. Assessing the acceptability and feasibility of the data collection framework;
- 186 3. Examining the preliminary efficacy, quantitative and qualitative effects of
- 187 KONTAKT™;
- 188 4. Exploring the impact of common process factors on intervention outcomes; and,
- 189 5. Examining the cost-effectiveness of KONTAKT™ CHILD compared to standard care.

190 Our primary hypothesis is that the Chinese 16-session KONTAKT™ CHILD programme

191 will be feasible and culturally appropriate for Chinese autistic children with minor revisions and can

192 be successfully implemented in a tertiary clinic. We also hypothesise that participants in the

193 immediate training group (ITG), in comparison to the delayed training group (DTG) [wait-list], will

194 experience greater improvements in outcomes from Time 1 to Time 3 (waiting period of DTG). We

195 expect that participants and their parents with higher readiness for change and a stronger alliance in

196 the ITG will benefit more from KONTAKT™ CHILD. Moreover, we anticipate that the training

197 effects in the ITG will persist at follow-up, and significant improvements in children's outcomes

198 will occur in the DTG from Time 3 to Time 5 (training endpoint of the DTG). For cost-effective

199 analysis, we hypothesise that the additional costs for KONTAKT™ will be offset by participants'

200 improvement in health-related quality of life and out-of-pocket savings in the use of other mental

201 health and psychiatric services.

202 **Trial Design**

203 This study was approved by the Ethical Board Committee at the Third Affiliated Hospital of

204 Sun Yat-sen University (II2023-119-01) and preregistered in Chinese Clinical Trials
205 (ChiCTR2300072136).

206 Any modification to this protocol will be reported to the ethical board and updated in Chinese
207 Clinical Trials. Following Thabane and Lancaster's guidelines in 2019 [49], this Chinese
208 KONTAKT™ CHILD protocol is planned and reported following the Standard and Protocol Items:
209 Recommendations for Interventional Trials (SPIRT) [50]. The findings of this study will be reported
210 adherent to the Consolidated Standards of Reporting Trials for Social and Psychological
211 Interventions (CONSORT-SPI) [51].

212 The Chinese KONTAKT™ CHILD feasibility study has a prospective, wait-list controlled,
213 single-site, stratified, randomised design. Blinding will apply to data collection, outcome
214 adjudicators, and data analysts. All electronic files, including coding videos and scanned drawings,
215 will be named without identifying personal information and group allocation or time-point
216 information. Three major assessment time-points (ITG: Pre-training [T1], Post-training [T3], and
217 Follow-Up [T5]; DTG: Pre-training [T1], Pre-training [T3], Post-training [T5]), with additional
218 mid-point cost and processing factors data collection for each group, are included. Additional
219 mid-point cost data collection follows the two-month follow-up intervals recommended by the
220 Treatment Inventory of Costs in Patients with Psychiatric Disorders - Child version (TiC-PC)
221 manual [52]. Measurements will be taken during face-to-face meetings, with the exception of data
222 from teachers and the prescreening process. Further, this study will employ a mixed-methods design,
223 with both between-group and within-participant comparisons, to explore the feasibility,
224 acceptability of implementing a large-scale RCT, and the preliminary efficacy of the Chinese

225 KONTAKT™ CHILD programme. Randomisation is performed at a 1:1 allocation ratio, with
226 variable block length and stratification by sex. Participant recruitment and training are ongoing
227 between 2023 June 5 and 2025 March 1.

228 **Methods: participants, interventions, and outcomes**

229 **Study setting**

230 All in-person assessments and interventions, except for the excursion session, will take place at
231 the outpatient department of the Child Development and Behaviour Centre (CDBC) of the tertiary
232 academic hospital, the Third-affiliated Hospital of Sun Yat-sen University, in Guangzhou, China.
233 The CDBC is one of China's first established and leading developmental behavioural paediatric
234 units, with over 20 years of experience in diagnosing and promoting the well-being of autistic
235 individuals and their families. The CDBC provides over 10,000 clinic appointments annually to
236 neurodivergent children and their families across China seeking diagnostic and intervention
237 services.

238 Online assessments will be designed using the SurveyStar online survey platform
239 (<https://wjx.cn/>). The SurveyStar is one of the most popular electronic survey platforms in Chinese
240 contexts, with its services covering more than three million enterprises and 90% of universities in
241 China.

242 Due to limited email use in the Chinese Mainland, WeChat®, the dominant instant messaging
243 and media app, will be the primary channel for participant recruitment, communication with
244 families, and online survey distribution. Additionally, the SurveyStar conveniently integrates with

245 WeChat[®] through a Mini Programme [53], allowing WeChat[®] users to seamlessly complete
246 questionnaires directly on the platform.

247 The KONTAKT[™] certified trainers are experienced CBDC clinicians (clinical psychologists,
248 developmental behavioural paediatricians, and therapists) working with Chinese autistic children
249 (with 3 to 10 years of working experience). They have completed standardised online KONTAKT[™]
250 methodological training provided by experienced trainers from the Center of Neurodevelopmental
251 Disorders at Karolinska Institutet (KIND), including self-directed training and video-conference
252 seminars, followed by a 13-session enhanced in-person training. The enhanced training course
253 mainly included trainers role-playing the child sessions, and more in-depth discussion on the
254 principles of KONTAKT[™].

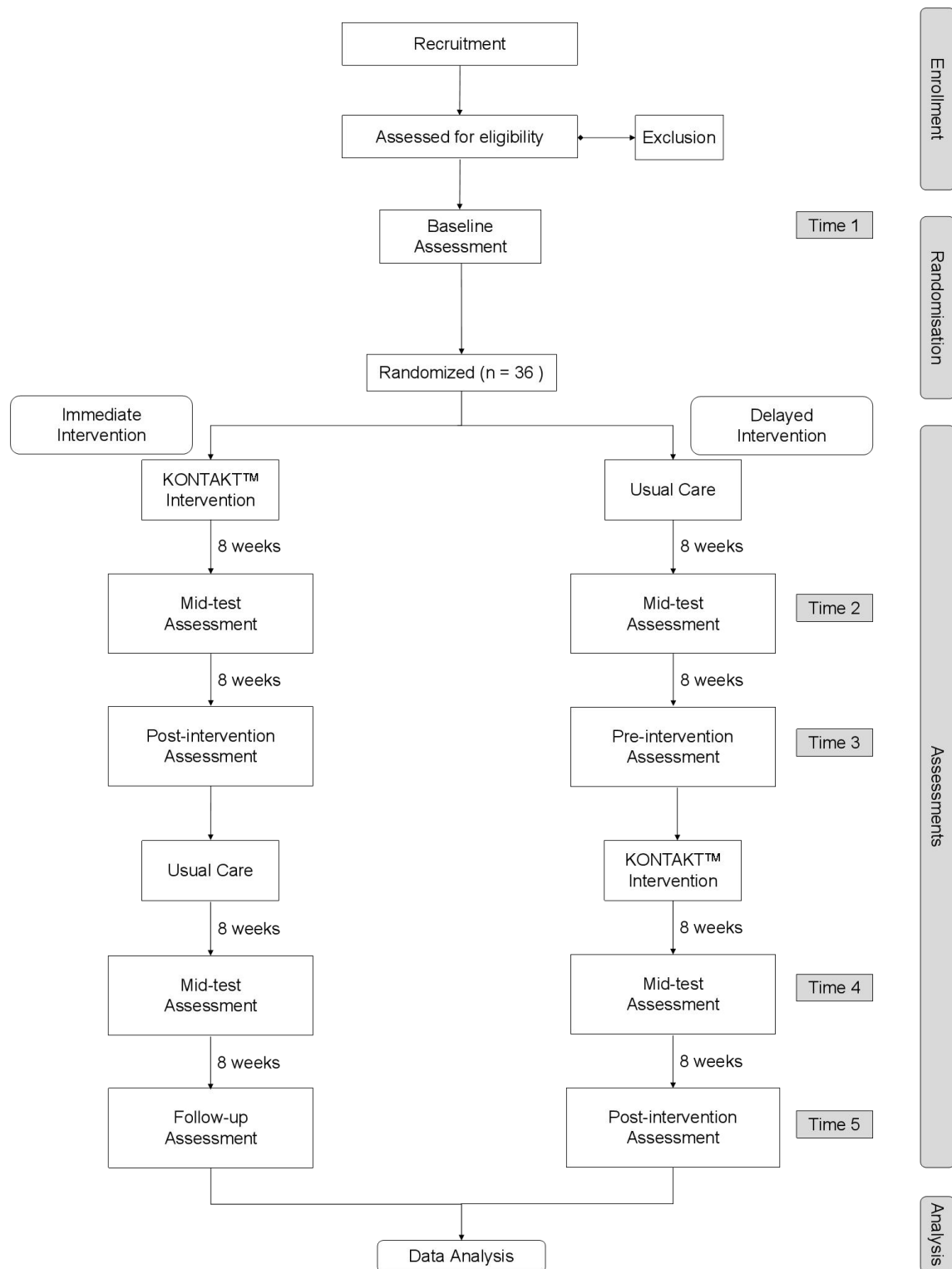
255 All KONTAKT[™] CHILD sessions, except for the excursion session, will be delivered in a
256 spacious, well-lit room at CDBC, with participants and trainers sitting in a circle. As suggested in
257 the KONTAKT[™] manual, delivery of the programme content will be supported by a flipchart,
258 utilised to record notes during each session, and a board displaying the group rules, session agenda,
259 and points assigned to participants in recognition of their participation in the sessions. The
260 excursion session (session 9) will be to a café, a bubble tea shop, or a convenience store, accessible
261 from CDBC. Parent sessions will take place in a separate room, with parents sitting together in a
262 circle without their children present. A projector will be utilised to present information on the
263 principles and the content of KONTAKT[™], and information pertaining to their role, such as
264 completing assignments and providing constructive feedback, in supporting their children during
265 the intervention period.

266 **Recruitment**

267 **Figure 1** displays the flow of participants throughout the study. Thirty-six autistic children will
268 be recruited through the outpatient department of the CDBC. Multiple recruitment avenues will be
269 utilised including word-of-mouth, referrals from clinicians, posters displaying information about the
270 study at the CDBC clinic, and flyers published on the WeChat[®] account of CDBC
271 (<https://www.wechat.com/>).

272 Parents will express their interest in the study by completing a brief online registration form
273 (taking approximately 10-15 minutes to complete) obtaining their contact information, their
274 child/children's demographic information, diagnostic statuses, previous evaluations on the Wechsler
275 Intelligence Scale for Children-IV Chinese version (WISC-IV) [54], the Autism Diagnostic
276 Observation Schedule-Generic (ADOS-G) [55], and screening for problem behaviours which may
277 impact on their ability to engage positively in a group setting using the Childhood Behavior
278 Checklist-parent version (CBCL) [56]. Obtaining parents' expression of interest in this way enables
279 estimation of the demand for KONTAKT[™] from families engaging with CDBC.

280 Following the submission of their expression of interest, a research coordinator will assess
281 candidates' eligibility to participate in the study. Parents of children meeting the inclusion criteria
282 for the study will subsequently participate in a 10-20 minute prescreening phone interview,
283 discussing with the research team their child's school lives (e.g. how their child is getting along
284 with their classmates and teachers), academic performances, and special needs, and addressing any
285 study-related questions. This brief interview with parents will also ascertain potential participants'
286 suitability to cope with the cognitive and verbal demands of KONTAKT[™].



287 **Figure 1** Chinese KONTAKT™ CHILD feasibility study flowchart.

288 If fulfilling the prescreening criteria, candidate participants and their parents will attend CDBC

289 for a 50-minute face-to-face intake interview with the research coordinator. During the intake

290 interview, both children and parents will participate in a 20-minute individual interview with the
291 research coordinator. Families meeting the inclusion criteria of the study will be provided with
292 detailed oral and written information about their participation in the study, including the
293 requirements. Written informed consent will be obtained from parents and children.

294 **Eligibility criteria**

295 *Inclusion criteria*

- 296 (1) Aged 8-12 years;
- 297 (2) A clinical diagnosis of autism (confirmed by ADOS-G, module 3);
- 298 (3) A Full-scale IQ > 70 on the WISC-IV; and,
- 299 (4) Resided in Guangzhou city for the past 12 months.

300 *Exclusion criteria*

- 301 (1) Significant physical impairment or severe metabolic disease(s);
- 302 (2) Significant rule-breaking or aggressive behaviours within the last six months, as confirmed
303 by CBCL;
- 304 (3) Low intrinsic motivation to participate as confirmed by the intake interview;
- 305 (4) Significant difficulties with Chinese characters reading comprehension or Mandarin
306 expression and comprehension; and,
- 307 (5) Prior or current behaviour or psychiatric conditions that could disrupt participation or
308 necessitate other treatment(s).

309 Participants with common co-occurring neurodevelopmental or psychiatric conditions in

310 autistic individuals, such as attention-deficiency hyperactivity disorder, depression, anxiety, and tic
311 disorder, are eligible if these conditions do not significantly interfere with participation. Participants
312 will continue with their prescribed pharmacological treatments, psychological therapies, or other
313 interventions while participating in KONTAKT™ CHILD. Written informed consent will be
314 obtained from participants and parents after a thorough explanation of the study during the intake
315 interview.

316 **Intervention**

317 *KONTAKT™ CHILD Intervention*

318 Prior to the development of this study protocol, a preliminary adaptation of KONTAKT™ (The
319 first step of the ICAF - Information gathering) has been completed. The KONTAKT™ programme
320 includes workbooks for trainers, children, and parents, supporting intervention fidelity. In adapting
321 the 16-session variant of KONTAKT™ from the Australian English version to Mandarin Chinese, a
322 rigorous process was employed. Firstly, an initial translation was made and verified for accuracy by
323 bi-lingual authors (LU, ZH, and EW). Then, a working group of KONTAKT™ Chinese trainers,
324 who are also CDBC clinicians, provided feedback on the initial programme materials. This step
325 resulted in significant modifications to the discussion topics, particularly regarding those addressing
326 autism diagnosis, making them more general and implicit (most notably in session 3). In addition,
327 to encourage parents to discuss the autism diagnosis with their child, information relating to “how
328 to talk about the diagnosis with your child”, was added to the first parent session. This adaptation
329 was made given that research has highlighted that over 60% of Chinese autistic children are
330 unaware of their autism diagnosis, with 40% of parents of Chinese autistic children preferring not to

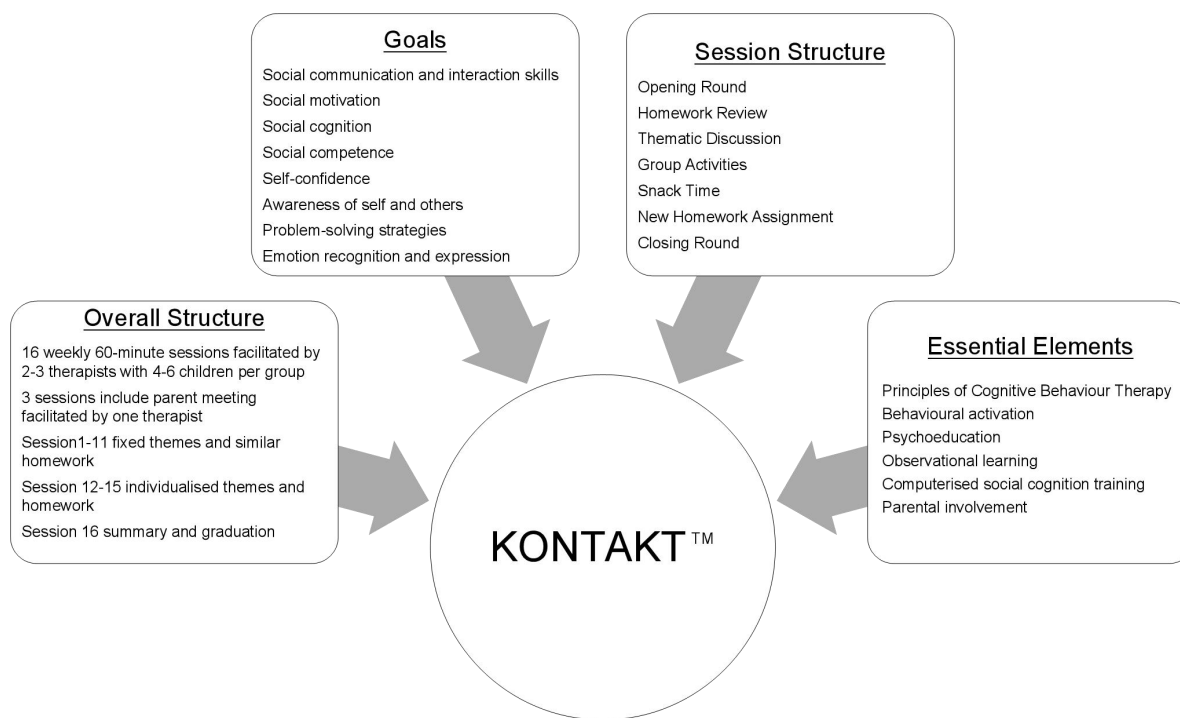
331 disclose an autism diagnosis to their children [43].

332 The current adaptation of the KONTAKT™ programme also emphasises enhanced parent
333 education and support. Parents will receive information and resources to support their children with
334 the KONTAKT™ homework activities. This includes parents role-playing parent-child interactions
335 during homework completion contexts and demonstration videos. Throughout the programme,
336 KONTAKT™ trainers will also provide session-by-session feedback, interim and final report to
337 parents on their child’s progress. Additionally, they will offer ongoing coaching and encouragement
338 to parents. This enhanced parent support directly addresses a need identified in previous research
339 [33] - Chinese parents expressed a desire for additional coaching skills education to facilitate their
340 autistic children’s participation in SSGTs.

341 Moreover, members of the Chinese research team further modified and added questions, games,
342 activities, and scenarios aligned with Chinese cultural norms. A Chinese name was also created for
343 KONTAKT™, emphasizing the training’s focus on meaningful socialisation (交得益™). Finally, a
344 family with an autistic adolescent proofread the manual and made edits to enhance language fluency
345 and readability, and the inclusion of culturally appropriate terminology. Additionally, a logo for the
346 Chinese version of KONTAKT™ was designed and utilised on customised stationary and course
347 materials, to foster a sense of group cohesion among participants.

348 KONTAKT™ integrates Cognitive Behaviour Therapy principles and learning principles
349 tailored towards the needs of autistic youth (see **Figure 2**) [26]. These include principles of
350 psychoeducation, observational learning, modelling, behavioural activation, homework,
351 computerised cognitive training, opportunities for rehearsal, a structured agenda, and parental

352 involvement. KONTAKT™ employs mandatory, recurring, and variable activities to support
353 participants in achieving their personally meaningful social goals. Sessions aim to enhance
354 understanding of social norms, develop adaptive socio-emotional skills, and promote practical
355 applications. The first 11 sessions of KONTAKT™ consistently present weekly themes and
356 assignments, while later sessions are led by the participants and tailored towards topics of interest to
357 each group. In this way, KONTAKT™ accommodates not only for cultural context but also for the
358 subtle differences and preferences of each KONTAKT™ group.



359
360 **Figure 2** Elements, structures, and goals of KONTAKT™ [7, 26].

361 A group of 4-6 participants will attend 16 consecutive sessions of KONTAKT™ led by 2 to 3
362 trainers on weekends, with each session lasting approximately 60 minutes. Three parent sessions
363 will take place at the beginning, middle, and end of the training, offering parents individual
364 feedback on their child's progress, presenting educational information on autism and approaches to
365 discussing an autism diagnosis with their child, and encouraging parents in socially coaching their

366 children. During the parent sessions opportunities will be provided encouraging parents to ask
367 questions, provide feedback, and engage with other parents of autistic children. Parents will be
368 encouraged to assist their children with homework, with trainers providing feedback to parents after
369 each session. Refer to **Supplementary Table 1 (online supplemental file 1)** for the structure and
370 content of the Chinese KONTAKT™ CHILD version.

371 To ensure fidelity to the KONTAKT™ training protocol, trainers will complete
372 session-by-session fidelity checklists and receive supervision from certified KONTAKT™ trainers.

373 **Description of the rationale for adopting the Chinese 16-session KONTAKT™**

374 While KONTAKT™ has been previously standardised and published in 12 and 24 session
375 variants, the reasons underpinning the choice to tailor the 16-session variant to the Chinese
376 Mainland were three-fold. Firstly, previous research found that the 12-session variant did not
377 significantly outperform standard care in Sweden in children [28], and the 24-session variant had a
378 higher attrition rate than the 16-session variant and 12-session variant (26% vs 11%/14%) [28, 29,
379 30]. Moreover, aligning with the Chinese academic year structure, which consists of two terms with
380 approximately five months each, the 16-session version is more practical. Lastly, evaluating the
381 16-session variant will result in the DTG waiting for a 4 to 5 month period, which would be
382 extended by evaluating the 24-session variant and negatively impact on adherence and the
383 timeliness of access to the intervention [57].

384 **Explanation for the choice of comparators**

385 The waiting period of the DTG is limited to 4-5 months, roughly equivalent to one round of

386 KONTAKT™ training. While an active comparator in an RCT is typically the most robust, due to
387 limited clinical resources in the Chinese Mainland, a wait-list control group is considered more
388 practical. Moreover, given that “nonspecific” care is common in the Chinese Mainland, a wait-list
389 control group allows for assessing the additional impact of KONTAKT™ CHILD in addition to
390 standard care.

391 **Intervention adherence**

392 We will use a participant attendance sheet to track compliance, aiming for at least 80%
393 attendance (13 out of 16 sessions) as acceptable. Homework completion will also be recorded, with
394 a target of over 60% considered tolerable.

395 We will further adopt several approaches as recommended by Robiner to enhance the wait-list
396 group’s adherence [58]:

- 397 (1) Provide detailed study information to families during intake interviews;
- 398 (2) Emphasise to families the importance of adherence;
- 399 (3) Establish a collaborative working relationship with families during intake interviews to
400 develop trust and rapport;
- 401 (4) Offer face-to-face assessments for regular clinical visits during the waiting periods;
- 402 (5) Limit the waiting time for the DTG to 4-5 months with a single-round intervention; and,
- 403 (6) Schedule appointments at times convenient to families, for example on weekends.

404 **Randomisation**

405 After the initial visit to the clinic, participants will be randomised to either ITG or DTG.

406 Randomisation will be conducted by a third party not involved in the Chinese KONTAKT™
407 CHILD trial using computer-generated sequentially random numbers. The permuted block numbers
408 4 to 6 will be used to restrict randomisation within the strata (birth-assigned sex). Each participant
409 will be assigned a unique code.

410 **Assessments/measures**

411 Outcomes will be assessed from the perspective of multiple informants (children, parents,
412 teachers, clinical ratings), via multiple data collection methods (questionnaires, interviews,
413 observations, projective tests). The data collection timeline is presented in **Table 1**.

414 [Table 1]

415 All online questionnaire fields are mandatory, requiring completion to progress, eliminating
416 the expectation of missing data. QR codes will be used for distributing the registration and teacher
417 questionnaires, completed via the WeChat® app. All teacher questionnaires will be assigned a
418 unique participant identification number.

419 *The primary outcome* of the KONTAKT™ CHILD study is improvement in social
420 communication and interaction skills. This is assessed using the Contextual Assessment of Social
421 Skills (CASS), an objective and ecologically valid observational measure [59]. The CASS involves
422 two videotaped role-play assessments where participants engage in reciprocal conversation and
423 interaction. These assessments take place in contexts that are manipulated to be either interesting or
424 boring. This manipulation is achieved by changing how the confederate respond and interact with
425 the participant. During each role-play, participants and an unknown adult confederate of an opposite

426 birth-assigned sex pretend that they have just joined a new club and are waiting for the first session
427 to begin. During this three-minute waiting period, participants and the adult confederate can talk to
428 each other. *Secondary outcomes* include autistic characteristics (Social Responsiveness Scale-2
429 [SRS-2] [60]), generalised social skills (Snack Time Assessment of Relationships and Social Skills
430 [STARSS] [59, 61]), adaptive functioning (Adaptive Behaviour Assessment System-II [62, 63]),
431 self-esteem and self-concept (Self-concept Scale Draw-A-Person [SCS-DAP] [64], Child
432 Rosenberg Self-Esteem Scale [CRSES] [65]), cognitive development and psychosocial well-being
433 (Koppitz Draw-A-Person Test [66, 67], Child Outcome Rating Scale [68, 69]), perceived school
434 support school level [33], and parental reflective functioning [70]. *Feasibility outcomes* include
435 acceptability, appropriateness, and negative effects assessed via quantitative data (fidelity checklists,
436 recruitment rates, attendance rates, homework completion rates, Group Session Rating Scale [71],
437 Theoretical Framework of Acceptability Questionnaire [72], and Negative Effects Questionnaire
438 [73]) and qualitative data from focus groups held post-intervention (ITG: post-training [T3] and
439 follow-up [T5]; DTG: post-training [T5]). *Common process factors measurements* include alliance
440 (Therapeutic Alliance Scales for Children [74, 75]) and readiness for change (Preparedness for
441 Participating in KONTAKT™ Scale [76]). *Cost-effectiveness outcomes* include healthcare
442 consumption and productivity loss (the tailored version of the Treatment Inventory of Costs in
443 Patients with Psychiatric Disorders - Child Version [77, 78]) and health-related quality of life (Child
444 Health Utility 9D [79], EQ-5D-Y [80]).

445 For details of these measures and relation to the focus areas of the feasibility study outlined by
446 Bowen et al. [81], see **online supplemental file 2**.

447 **Retention**

448 Families will be requested to attend data collection appointments at a time convenient to them
449 with reminders from research assistants. Paper-pencil questionnaires will be mailed to families
450 unable to attend appointments in person, and provided with a pre-paid envelope to return these via
451 post. The reasons for participant withdrawal, adverse events, and other unintended effects will be
452 documented and reported, and drop-outs will not be replaced.

453 **Data management**

454 In the Chinese KONTAKT™ CHILD feasibility study, all paper data will be converted to
455 electronic format. Trained research assistants will input the data within two weeks after each
456 assessment. Both paper and electronic data will be stored in EpiData [82] with double-entry for data
457 integrity. Checks for referenced range values, valid values, and regular data consistency will be
458 applied. Non-numeric data, including open-ended questions and notes, will be entered as originally
459 written.

460 Video and audio recordings will be labelled with unique identifiers, with details recorded in the
461 EpiData repository. Paper documents will be securely stored in locked filing cabinets at CDBC.
462 Electronic textual data will be password-protected. Video and audio files will have dual backups on
463 encrypted hard disks. Only the principal investigator will have full data access.

464 Incremental data and recording files will be backed up daily.

465 **Sample size**

466 The primary outcome of this present study is the CASS. Previous SSGT studies applying the
467 CASS suggested a medium effect size (ES) of 0.42 [83]. Additionally, a rough average ES of 0.40,
468 as measured by the SRS-2, is derived from the three prior RCT studies evaluating KONTAKT™
469 [28, 29, 30], and informs the expected ES for the future Chinese KONTAKT™ CHILD main trial.
470 According to Whitehead et al. [84], a feasibility study with a sample size of 15 per treatment arm
471 allows for detecting a medium ES (0.3~0.7) with 90% power and two-sided 5% significance in the
472 main trial. Accounting for a 15% attrition rate from previous KONTAKT™ evaluation studies, we
473 require a sample size of $n = 18$ per arm ($N = 36$ in total).

474 **Statistical analysis**

475 *Statistical methods for primary and secondary outcomes*

476 The primary outcome for this study is social-communication skills improvement as measured
477 by the CASS, with the follow-up being the primary endpoint. The analysis will follow the
478 intent-to-treat (ITT) principles [85], and all data from every participant will be analysed. Missing
479 data will be handled based on established guidelines for each measure or CONSORT-SPI statement.
480 No interim analysis will occur.

481 Data will be checked for normality and variance heterogeneity. Baseline demographics will be
482 compared between ITG and DTG using t-tests or Wilcoxon rank test (continuous variables) and
483 chi-square tests (categorical variables) to verify group comparability. Random mixed effects
484 regression models, which have the advantage of handling missing data, will compare ITG and DTG

485 for primary and secondary analyses, considering time (baseline, endpoint, follow-up), group (ITG,
486 DTG), age, gender, IQ, co-occurring conditions, process factors (PPKS, GSRS at baseline), and the
487 interaction variable (time \times group). Participants' ID will be regarded as a random effect accounting
488 for intra-individual correlations. Intervention effects will be reported as least-square mean
489 differences. ES will be reported by dividing the groups' mean difference (baseline to endpoint and
490 baseline to follow-up) by the pooled standard deviations, with positive values favouring the
491 intervention.

492 Feasibility measures will be reported descriptively. Additionally, qualitative data will be
493 transcribed verbatim, de-identified, and then imported into NVivo 12 for theme-based analysis.

494 *Health economic analyses analysis*

495 Cost-effectiveness analysis (CEA) will follow an ITT basis, considering societal and
496 healthcare perspectives. Cost differences will be statistically tested, while resource usage
497 differences will not be compared to prevent false positives. Quality-adjusted life year (QALY) will
498 be calculated from EQ-5D-Y and CHU9D scores using validated algorithms for Chinese children
499 and adolescents [86, 87]. Given potential non-normality in cost data, a non-parametric random
500 forest permutation model will handle missing data. The incremental cost-effectiveness ratio (ICER)
501 will be calculated as $\Delta\text{cost}/\Delta\text{QALYs}$. Cost differences between ITG and DTG at different time
502 points will be analysed via linear regression with bootstrapping for 5,000 repetitions to generate
503 non-parametric confidence intervals (See **online supplemental file 3** for CEA details).

504 **Community and public involvement**

505 The first author, LU, is self-identified as autistic. During the adaptation stage, the training
506 manual for KONTAKT™ was proofread by a family with an autistic adolescent. To assess training
507 burden and programme acceptability, participants will provide feedback through a combination of
508 questionnaires and focus group interviews (mixed methods). Advocating for outcomes focused on
509 well-being and mental health, autistic people continue to emphasise the importance of listening to
510 their voices. Thus, this trial will also capture both quantitative and qualitative data examining
511 participants' experiences of receiving KONTAKT™ CHILD and the impact of the programme on
512 children's well-being. We will further engage the autism community, involving both parents with
513 autistic children and clinicians, in recruiting potential participants. Finally, participants will be
514 invited to share their lived experiences of participating in KONTAKT™ with the autism community
515 through community events and social media in China when the trial has ended.

516 **Discussion**

517 The study commenced recruitment on 2023 June 5. This article presents the design of the
518 Chinese KONTAKT™ CHILD trial, a feasibility wait-list RCT featuring the Chinese 16-session
519 KONTAKT™ variant for autistic children. This design incorporates multiple data sources and
520 diverse outcome assessment methods, facilitating a comprehensive exploration of the feasibility of
521 this programme from different perspectives. Furthermore, a systematic cultural adaptation process
522 ensures the suitability, acceptability, and comprehensiveness of the Chinese KONTAKT™ version.
523 Adhering to the ICAF framework, this study will guide the refinement of the Chinese KONTAKT™

524 version and future larger-scale evaluations, addressing the question of whether SSGT can be
525 effectively implemented for Chinese school-aged autistic children.

526 While there are several strengths in the study design mentioned earlier, it's important to
527 acknowledge some limitations. Firstly, conducted in Guangzhou, one of China's most advanced
528 cities, the study's single-site nature may limit the generalisability of the findings to other clinical
529 settings in the Chinese Mainland, especially to regions with more limited resources. Additionally,
530 certain measures planned for use in the study, such as the CRSES and the SCS-DAP, may have
531 uncertain psychometric properties due to the lack of Chinese population data. However, this
532 feasibility study aims to provide empirical data on the psychometrics of these measures with
533 Chinese autistic children. Another limitation is the absence of an active comparator, as the wait-list
534 control could potentially overestimate treatment effects [88]. Nevertheless, this aligns with the
535 prevailing situation in China. Furthermore, the study will collect data on parents' and children's
536 readiness for change, allowing for an exploration of the "help-seeker" effects, following the
537 recommendation by Cunningham and colleagues in 2013 [88]. Lastly, it should be noted that the
538 sample size justification in the current protocol did not consider the influences of covariates on
539 decreasing the power of the analysis.

540 As mentioned above, the final stage of the ICAF involves running a full-scale RCT trial to
541 evaluate the efficacy of the Chinese version of KONTAKT™. Therefore, upon completing this
542 feasibility study, the investigators will integrate all quantitative and qualitative results to decide
543 whether a full-scale RCT trial will progress or redesigning another KONTAKT™ feasibility study
544 will be needed. The following aspects will be considered: (1) participants' and parents' acceptability

545 and adherence rates, (2) participants' and parents' feedback on demand and training burden for
546 KONTAKT™, (3) trainers' feedback on implementing KONTAKT™ in Chinese clinical setting, (4)
547 trainers' fidelity on implementing KONTAKT™, (5) the feasibility results of the processes for data
548 collecting, and (6) considering the potential capacity of the intervention setting (human resources,
549 materials, and equipment) on implementing a full-scale RCT regarding the sample size calculation
550 for the primary outcome.

551 **Plans for dissemination of finding**

552 The findings of the Chinese KONTAKT™ CHILD trial will be submitted to peer-reviewed
553 journals for consideration. Abstracts will also be submitted to both local and international
554 conferences, and community-based lay abstracts will be written and disseminated to provide
555 feedback to autism stakeholders in China.

556 **References**

- 557 1. American Psychiatric Association. Diagnostic and statistical manual of mental
558 disorders. 5th ed., text rev.;2022.
- 559 2. Tillmann J, San Jose Caceres A, Chatham CH, et al. Investigating the factors
560 underlying adaptive functioning in autism in the EU-AIMS Longitudinal European Autism
561 Project. *Autism Res* 2019;12(4):645-57. <https://doi.org/10.1002/aur.2081>. Epub 2019 Feb
562 12.
- 563 3. Zhou H, Xu X, Yan W, et al. Prevalence of Autism Spectrum Disorder in China: A
564 Nationwide Multi-center Population-based Study Among Children Aged 6 to 12 Years.
565 *Neurosci Bull* 2020;36(9):961-71. <https://doi.org/10.1007/s12264-020-00530-6>. Epub 2020
566 Jul 02.
- 567 4. Gilmore R, Ziviani J, Chatfield MD, et al. Social skills group training in adolescents
568 with disabilities: A systematic review. *Res Dev Disabil* 2022;125:104218.
569 <https://doi.org/10.1016/j.ridd.2022.104218>. Epub 2022 Mar 21.
- 570 5. Kaat AJ, Lecavalier L. Group-based social skills treatment: A methodological review.
571 *Res Autism Spectr Disord* 2014;8(1):15-24. <https://doi.org/10.1016/j.rasd.2013.10.007>.
- 572 6. Afsharnejad B, Black MH, Falkmer M, et al. The Methodological Quality and
573 Intervention Fidelity of Randomised Controlled Trials Evaluating Social Skills Group
574 Programs in Autistic Adolescents: A Systematic Review and Meta-analysis. *J Autism Dev*
575 *Disord* 2023 <https://doi.org/10.1007/s10803-023-05893-z>. Epub 2023 Jan 22.

- 576 7. Girdler S, Afsharnejad B, Black MH, et al. KONTAKT® Manual English version.
577 Australia2021.
- 578 8. Gates JA, Kang E, Lerner MD. Efficacy of group social skills interventions for youth
579 with autism spectrum disorder: A systematic review and meta-analysis. *Clin Psychol Rev*
580 2017;52:164-81. <https://doi.org/10.1016/j.cpr.2017.01.006>. Epub 2017 Jan 29.
- 581 9. Wolstencroft J, Robinson L, Srinivasan R, et al. A Systematic Review of Group
582 Social Skills Interventions, and Meta-analysis of Outcomes, for Children with High
583 Functioning ASD. *J Autism Dev Disord* 2018;48(7):2293-307.
584 <https://doi.org/10.1007/s10803-018-3485-1>. Epub 2018 Feb 10.
- 585 10. Zheng S, Kim H, Salzman E, et al. Improving Social Knowledge and Skills among
586 Adolescents with Autism: Systematic Review and Meta-Analysis of UCLA PEERS(R) for
587 Adolescents. *J Autism Dev Disord* 2021;51(12):4488-503.
588 <https://doi.org/10.1007/s10803-021-04885-1>. Epub 2021 Jan 30.
- 589 11. Miller A, Vernon T, Wu V, et al. Social Skill Group Interventions for Adolescents
590 with Autism Spectrum Disorders: a Systematic Review. *Rev J Autism Dev Disord*
591 2014;1(4):254-65. <https://doi.org/10.1007/s40489-014-0017-6>.
- 592 12. Soares EE, Bausback K, Beard CL, et al. Social Skills Training for Autism
593 Spectrum Disorder: a Meta-analysis of In-person and Technological Interventions. *J Technol*
594 *Behav Sci* 2021;6(1):166-80. <https://doi.org/10.1007/s41347-020-00177-0>. Epub 2020 Nov
595 24.
- 596 13. Bottema-Beutel K, Park H, Kim SY. Commentary on Social Skills Training

597 Curricula for Individuals with ASD: Social Interaction, Authenticity, and Stigma. *J Autism*
598 *Dev Disord* 2018;48(3):953-64. <https://doi.org/10.1007/s10803-017-3400-1>. Epub 2017 Nov
599 25.

600 14. Kinnaird E, Stewart C, Tchaturia K. Investigating alexithymia in autism: A
601 systematic review and meta-analysis. *Eur Psychiatry* 2019;55:80-89.
602 <https://doi.org/10.1016/j.eurpsy.2018.09.004>. Epub 2018 Nov 07.

603 15. Pellicano E, Heyworth M. The Foundations of Autistic Flourishing. *Curr Psychiatry*
604 *Rep* 2023;25(9):419-27. <https://doi.org/10.1007/s11920-023-01441-9>. Epub 2023 Aug 08.

605 16. Nicolaidis C, Raymaker D, Kapp SK, et al. The AASPIRE practice-based
606 guidelines for the inclusion of autistic adults in research as co-researchers and study
607 participants. *Autism* 2019;23(8):2007-19. <https://doi.org/10.1177/1362361319830523>. Epub
608 2019 Apr 04.

609 17. Tavernor L, Barron E, Rodgers J, et al. Finding out what matters: validity of quality
610 of life measurement in young people with ASD. *Child Care Health Dev* 2013;39(4):592-601.
611 <https://doi.org/10.1111/j.1365-2214.2012.01377.x>. Epub 2012 Apr 21.

612 18. Huggins CF, Donnan G, Cameron IM, et al. Emotional self-awareness in autism: A
613 meta-analysis of group differences and developmental effects. *Autism* 2021;25(2):307-21.
614 <https://doi.org/10.1177/1362361320964306>. Epub 2020 Nov 07.

615 19. Tang JSY, Falkmer M, Chen NTM, et al. Designing a Serious Game for Youth with
616 ASD: Perspectives from End-Users and Professionals. *J Autism Dev Disord*
617 2019;49(3):978-95. <https://doi.org/10.1007/s10803-018-3801-9>. Epub 2018 Nov 01.

618 20. Lee A, Peter Hobson R. Drawing self and others: How do children with autism
619 differ from those with learning difficulties? *Br J Dev Psychol* 2006;24(3):547-65.
620 <https://doi.org/10.1348/026151005X49881>.

621 21. Papangelo P, Pinzino M, Pelagatti S, et al. Human Figure Drawings in Children
622 with Autism Spectrum Disorders: A Possible Window on the Inner or the Outer World. *Brain*
623 *Sci* 2020;10(6) <https://doi.org/10.3390/brainsci10060398>. Epub 2020 Jun 27.

624 22. Kotroni P, Bonoti F, Mavropoulou S. Children with autism can express social
625 emotions in their drawings. *Int J Dev Disabil* 2018;65(4):248-56.
626 <https://doi.org/10.1080/20473869.2018.1434855>. Epub 2018 Feb 13.

627 23. Schweizer C, Knorth EJ, Spreen M. Art therapy with children with Autism
628 Spectrum Disorders: A review of clinical case descriptions on ‘what works’. *The Arts in*
629 *Psychotherapy* 2014;41(5):577-93. <https://doi.org/10.1016/j.aip.2014.10.009>.

630 24. Waller D. Art therapy for children: how it leads to change. *Clin Child Psychol*
631 *Psychiatry* 2006;11(2):271-82. <https://doi.org/10.1177/1359104506061419>. Epub 2006 Nov
632 08.

633 25. Albaum CS, Vashi N, Bohr Y, et al. A Systematic Review of Therapeutic Process
634 Factors in Mental Health Treatment for Autistic Youth. *Clin Child Fam Psychol Rev*
635 2023;26(1):212-41. <https://doi.org/10.1007/s10567-022-00409-0>. Epub 2022 Aug 24.

636 26. Bölte S. Social färdtGhetsträning i grupp med fokus på kommunikation och social
637 interaktion vid autismspektrumtillstånd enligt Frankfurtmodellen (KONTAKT). Göttingen,
638 Stockholm: Hogrefe; 2018.

639 27. Herbrecht E, Poustka F, Birnkammer S, et al. Pilot evaluation of the Frankfurt
640 Social Skills Training for children and adolescents with autism spectrum disorder. *Eur Child*
641 *Adolesc Psychiatry* 2009;18(6):327-35. <https://doi.org/10.1007/s00787-008-0734-4>. Epub
642 2009 Jan 24.

643 28. Choque Olsson N, Flygare O, Coco C, et al. Social Skills Training for Children and
644 Adolescents With Autism Spectrum Disorder: A Randomized Controlled Trial. *J Am Acad*
645 *Child Adolesc Psychiatry* 2017;56(7):585-92. <https://doi.org/10.1016/j.jaac.2017.05.001>.
646 Epub 2017 Jun 26.

647 29. Jonsson U, Olsson NC, Coco C, et al. Long-term social skills group training for
648 children and adolescents with autism spectrum disorder: a randomized controlled trial. *Eur*
649 *Child Adolesc Psychiatry* 2019;28(2):189-201. <https://doi.org/10.1007/s00787-018-1161-9>.
650 Epub 2018 May 12.

651 30. Afsharnejad B, Falkmer M, Black MH, et al. KONTAKT(R) social skills group
652 training for Australian adolescents with autism spectrum disorder: a randomized controlled
653 trial. *Eur Child Adolesc Psychiatry* 2022;31(11):1695-713.
654 <https://doi.org/10.1007/s00787-021-01814-6>. Epub 2021 May 31.

655 31. Afsharnejad B, Falkmer M, Picen T, et al. "I Met Someone Like Me!": Autistic
656 Adolescents and Their Parents' Experience of the KONTAKT(R) Social Skills Group
657 Training. *J Autism Dev Disord* 2022;52(4):1458-77.
658 <https://doi.org/10.1007/s10803-021-05045-1>. Epub 2021 May 05.

659 32. Choque Olsson N, Rautio D, Asztalos J, et al. Social skills group training in

660 high-functioning autism: A qualitative responder study. *Autism* 2016;20(8):995-1010.

661 <https://doi.org/10.1177/1362361315621885>. Epub 2016 Feb 26.

662 33. Lao U, Li Y, Bai W, et al. Adaptation and Feasibility of the Mandarin Version of

663 PEERS((R)) for Autistic Adolescents. *J Autism Dev Disord* 2023.

664 <https://doi.org/10.1007/s10803-023-06056-w>. Epub 2023 Jul 22.

665 34. Hodge DR, Jackson KF, Vaughn MG. Culturally sensitive interventions and health

666 and behavioral health youth outcomes: a meta-analytic review. *Soc Work Health Care*

667 2010;49(5):401-23. <https://doi.org/10.1080/00981381003648398>. Epub 2010 Jun 04.

668 35. Barrera M, Jr., Castro FG, Strycker LA, et al. Cultural adaptations of behavioral

669 health interventions: a progress report. *J Consult Clin Psychol* 2013;81(2):196-205.

670 <https://doi.org/10.1037/a0027085>. Epub 2012 Feb 01.

671 36. Bernal G, Bonilla J, Bellido C. Ecological validity and cultural sensitivity for

672 outcome research: issues for the cultural adaptation and development of psychosocial

673 treatments with Hispanics. *J Abnorm Child Psychol* 1995;23(1):67-82.

674 <https://doi.org/10.1007/BF01447045>. Epub 1995 Feb 01.

675 37. Faregh N, Lencucha R, Ventevogel P, et al. Considering culture, context and

676 community in mhGAP implementation and training: challenges and recommendations from

677 the field. *Int J Ment Health Syst* 2019;13:58. <https://doi.org/10.1186/s13033-019-0312-9>.

678 Epub 2019 Aug 30.

679 38. Bölte S, Lawson WB, Marschik PB, et al. Reconciling the seemingly irreconcilable:

680 The WHO's ICF system integrates biological and psychosocial environmental determinants

681 of autism and ADHD: The International Classification of Functioning (ICF) allows to model
682 opposed biomedical and neurodiverse views of autism and ADHD within one framework.
683 Bioessays 2021;43(9):e2000254. <https://doi.org/10.1002/bies.202000254>. Epub 2021 Apr
684 03.

685 39. Bishop-Fitzpatrick L, Kind AJH. A Scoping Review of Health Disparities in Autism
686 Spectrum Disorder. J Autism Dev Disord 2017;47(11):3380-91.
687 <https://doi.org/10.1007/s10803-017-3251-9>. Epub 2017 Aug 02.

688 40. Kang-Yi CD, Grinker RR, Beidas R, et al. Influence of Community-Level Cultural
689 Beliefs about Autism on Families' and Professionals' Care for Children. Transcult Psychiatry
690 2018;55(5):623-47. <https://doi.org/10.1177/1363461518779831>. Epub 2018 Jul 05.

691 41. Ravindran N, Myers BJ. Cultural Influences on Perceptions of Health, Illness, and
692 Disability: A Review and Focus on Autism. J Child Fam Stud 2012;21(2):311-19.
693 <https://doi.org/10.1007/s10826-011-9477-9>.

694 42. Clark E, Zhou Z, Du L. Autism in China: Progress and challenges in addressing the
695 needs of children and families. Int J Sch Educ Psychol 2019;7(2):135-46.
696 <https://doi.org/10.1080/21683603.2019.1570885>.

697 43. Lao UC, Liang FJ, Dai JM, et al. Familiarity vs. Favorability: Exploring Formal
698 Autism Terminology in Chinese Discourse. 2023
699 <https://doi.org/https://doi.org/10.31219/osf.io/cp73f>. Epub 2023 Oct 10.

700 44. Sun X, Allison C, Auyeung B, et al. Service provision for autism in mainland China:
701 preliminary mapping of service pathways. Soc Sci Med 2013;98:87-94.

702 <https://doi.org/10.1016/j.socscimed.2013.08.016>. Epub 2013 Dec 18.

703 45. Wang F, Lao UC, Xing YP, et al. Parents' knowledge and attitude and behavior
704 toward autism: a survey of Chinese families having children with autism spectrum disorder.
705 Transl Pediatr 2022;11(9):1445-57. <https://doi.org/10.21037/tp-22-113>. Epub 2022 Oct 18.

706 46. Zhao Y, Luo Y, Zhang R, et al. Direct and indirect costs for families of children
707 with autism spectrum disorder in China. Autism 2023;27(8):2337-47.
708 <https://doi.org/10.1177/13623613231158862>. Epub 2023 Mar 08.

709 47. Aarons GA, Green AE, Palinkas LA, et al. Dynamic adaptation process to
710 implement an evidence-based child maltreatment intervention. Implement Sci 2012;7:32.
711 <https://doi.org/10.1186/1748-5908-7-32>. Epub 2012 Apr 20.

712 48. Highfield L, Hartman MA, Mullen PD, et al. Intervention Mapping to Adapt
713 Evidence-Based Interventions for Use in Practice: Increasing Mammography among African
714 American Women. Biomed Res Int 2015;2015:160103. <https://doi.org/10.1155/2015/160103>.
715 Epub 2015 Nov 21.

716 49. Thabane L, Lancaster G. A guide to the reporting of protocols of pilot and
717 feasibility trials. Pilot Feasibility Stud 2019;5:37.
718 <https://doi.org/10.1186/s40814-019-0423-8>. Epub 2019 Mar 13.

719 50. Chan AW, Tetzlaff JM, Altman DG, et al. SPIRIT 2013 statement: defining standard
720 protocol items for clinical trials. Ann Intern Med 2013;158(3):200-7.
721 <https://doi.org/10.7326/0003-4819-158-3-201302050-00583>. Epub 2013 Jan 09.

722 51. Grant S, Mayo-Wilson E, Montgomery P, et al. CONSORT-SPI 2018 Explanation

723 and Elaboration: guidance for reporting social and psychological intervention trials. *Trials*
724 2018;19(1):406. <https://doi.org/10.1186/s13063-018-2735-z>. Epub 2018 Aug 01.

725 52. Bouwmans C, Schawo S, Hakkaart-van Roijen L. *TiC-P kinderen Handleiding*.
726 Netherlands: Institute for Medical Technology Assessment, Erasmus University Rotterdam;
727 2012.

728 53. Tencent. WeChat Mini Programs 2024. Available from:
729 <https://mp.weixin.qq.com/cgi-bin/wx>, accessed 2024 June 08.

730 54. Zhang H. The revision of WISC-IV Chinese version. *Psychological Science*
731 2009;32(5):1177-79.

732 55. Lord C, Rutter M, Le Couteur A. Autism Diagnostic Interview-Revised: a revised
733 version of a diagnostic interview for caregivers of individuals with possible pervasive
734 developmental disorders. *J Autism Dev Disord* 1994;24(5):659-85.
735 <https://doi.org/10.1007/BF02172145>. Epub 1994 Oct 01.

736 56. Su L, Li X, Wan G, et al. The norms of Achenbach Child Behavior Checklist in
737 Hunan province. *Chin J Clin Psychol* 1996;4(1):24-28.

738 57. Thornton CS, Tsai WH, Santana MJ, et al. Effects of Wait Times on Treatment
739 Adherence and Clinical Outcomes in Patients With Severe Sleep-Disordered Breathing: A
740 Secondary Analysis of a Noninferiority Randomized Clinical Trial. *JAMA Netw Open*
741 2020;3(4):e203088. <https://doi.org/10.1001/jamanetworkopen.2020.3088>. Epub 2020 Apr
742 21.

743 58. Robiner WN. Enhancing adherence in clinical research. *Contemp Clin Trials*

744 2005;26(1):59-77. <https://doi.org/10.1016/j.cct.2004.11.015>.

745 59. Ratto AB, Turner-Brown L, Rupp BM, et al. Development of the Contextual
746 Assessment of Social Skills (CASS): a role play measure of social skill for individuals with
747 high-functioning autism. *J Autism Dev Disord* 2011;41(9):1277-86.
748 <https://doi.org/10.1007/s10803-010-1147-z>. Epub 2011 Feb 03.

749 60. Constantino JN, Gruber CP. Social responsiveness scale: SRS-2: Western
750 psychological services Torrance, CA; 2012.

751 61. Bent S, McDonald MG, Chen Y, et al. Brief report: Game day: A novel method of
752 assessing change in social competence in students with autism spectrum disorder (ASD).
753 *Research in Autism Spectrum Disorders* 2021;84
754 <https://doi.org/10.1016/j.rasd.2021.101766>.

755 62. Li YQ, Qiu ZY. Standardization of Adaptive Behavior Assessment System-II (6-18
756 Years Old) Chinese Version. *Chin J Rehabil Theory Practice* 2016:378-82.

757 63. Oakland T, Harrison PL. Adaptive behavior assessment system-II: Clinical use and
758 interpretation: Academic Press; 2011.

759 64. Bodwin RF, Bruck M. The adaptation and validation of the Draw-A-Person Test as
760 a measure of self concept. *J Clin Psychol* 1960.

761 65. Wood C, Griffin M, Barton J, et al. Modification of the Rosenberg scale to assess
762 self-esteem in children. *Front Public Health* 2021;9:655892.
763 <https://doi.org/10.3389/fpubh.2021.655892>.

764 66. Koppitz E. El dibujo de la figura humana. Buenos Aires: Guadalupe 2000.

- 765 67. Koppitz EM. Psychological Evaluation of Children's Human Figure Drawings:
766 Grune & Stratton; 1968.
- 767 68. Casey P, Patalay P, Deighton J, et al. The Child Outcome Rating Scale: validating a
768 four-item measure of psychosocial functioning in community and clinic samples of children
769 aged 10-15. Eur Child Adolesc Psychiatry 2020;29(8):1089-102.
770 <https://doi.org/10.1007/s00787-019-01423-4>. Epub 2019 Oct 30.
- 771 69. Sparks JA, Miller SD, Bohanske RT, et al. Giving youth a voice: A preliminary
772 study of the reliability and validity of a brief outcome measure for children, adolescents, and
773 caretakers. J Brief Ther 2006;5(2):71-88.
- 774 70. Ye P, Ju J, Zheng K, et al. Psychometric Evaluation of the Parental Reflective
775 Functioning Questionnaire in Chinese Parents. Front Psychol 2022;13:745184.
776 <https://doi.org/10.3389/fpsyg.2022.745184>. Epub 2022 Feb 15.
- 777 71. Duncan B, Miller S, Sparks J, et al. The child group session rating scale. Jensen
778 Beach, FL, USA 2011.
- 779 72. Sekhon M, Cartwright M, Francis JJ. Development of a theory-informed
780 questionnaire to assess the acceptability of healthcare interventions. BMC Health Serv Res
781 2022;22(1):279. <https://doi.org/10.1186/s12913-022-07577-3>. Epub 2022 Mar 03.
- 782 73. Rozental A, Kottorp A, Forsstrom D, et al. The Negative Effects Questionnaire:
783 psychometric properties of an instrument for assessing negative effects in psychological
784 treatments. Behav Cogn Psychother 2019;47(5):559-72.
785 <https://doi.org/10.1017/S1352465819000018>. Epub 2019 Mar 16.

- 786 74. Accurso EC, Hawley KM, Garland AF. Psychometric properties of the Therapeutic
787 Alliance Scale for Caregivers and Parents. *Psychol Assess* 2013;25(1):244-52.
788 <https://doi.org/10.1037/a0030551>. Epub 2012 Oct 24.
- 789 75. Shirk SR, Saiz CC. Clinical, empirical, and developmental perspectives on the
790 therapeutic relationship in child psychotherapy. *Dev Psychopathol* 1992;4(4):713-28.
- 791 76. Albaum C, Tablon P, Roudbarani F, et al. Predictors and outcomes associated with
792 therapeutic alliance in cognitive behaviour therapy for children with autism. *Autism*
793 2020;24(1):211-20. <https://doi.org/10.1177/1362361319849985>. Epub 2019 Jun 20.
- 794 77. Afsharnejad B, Falkmer M, Black MH, et al. KONTAKT(c) for Australian
795 adolescents on the autism spectrum: protocol of a randomized control trial. *Trials*
796 2019;20(1):687. <https://doi.org/10.1186/s13063-019-3721-9>. Epub 2019 Dec 10.
- 797 78. Bouwmans C, De Jong K, Timman R, et al. Feasibility, reliability and validity of a
798 questionnaire on healthcare consumption and productivity loss in patients with a psychiatric
799 disorder (TiC-P). *BMC Health Serv Res* 2013;13:217.
800 <https://doi.org/10.1186/1472-6963-13-217>. Epub 2013 Jun 19.
- 801 79. Chen G, Xu F, Huynh E, et al. Scoring the Child Health Utility 9D instrument:
802 estimation of a Chinese child and adolescent-specific tariff. *Qual Life Res*
803 2019;28(1):163-76. <https://doi.org/10.1007/s11136-018-2032-z>. Epub 2018 Oct 31.
- 804 80. Wille N, Badia X, Bonsel G, et al. Development of the EQ-5D-Y: a child-friendly
805 version of the EQ-5D. *Qual Life Res* 2010;19(6):875-86.
806 <https://doi.org/10.1007/s11136-010-9648-y>. Epub 2010 Apr 21.

- 807 81. Bowen DJ, Kreuter M, Spring B, et al. How we design feasibility studies. *Am J*
808 *Prev Med* 2009;36(5):452-7. <https://doi.org/10.1016/j.amepre.2009.02.002>. Epub 2009 Apr
809 14.
- 810 82. Lauritsen J, Bruus M. EPIDATA: Data entry system for use with Stata, SPSS, SAS,
811 Excel, text formats. 2000.
- 812 83. Rabin SJ, Laugeson EA, Mor-Snir I, et al. An Israeli RCT of PEERS(R):
813 Intervention Effectiveness and the Predictive Value of Parental Sensitivity. *J Clin Child*
814 *Adolesc Psychol* 2021;50(6):933-49. <https://doi.org/10.1080/15374416.2020.1796681>. Epub
815 2020 Aug 12.
- 816 84. Whitehead AL, Julious SA, Cooper CL, et al. Estimating the sample size for a pilot
817 randomised trial to minimise the overall trial sample size for the external pilot and main trial
818 for a continuous outcome variable. *Stat Methods Med Res* 2016;25(3):1057-73.
819 <https://doi.org/10.1177/0962280215588241>. Epub 2015 Jun 21.
- 820 85. McCoy CE. Understanding the Intention-to-treat Principle in Randomized
821 Controlled Trials. *West J Emerg Med* 2017;18(6):1075-78.
822 <https://doi.org/10.5811/westjem.2017.8.35985>. Epub 2017 Nov 01.
- 823 86. Yang P, Chen G, Wang P, et al. Psychometric evaluation of the Chinese version of
824 the Child Health Utility 9D (CHU9D-CHN): a school-based study in China. *Qual Life Res*
825 2018;27(7):1921-31. <https://doi.org/10.1007/s11136-018-1864-x>. Epub 2018 May 08.
- 826 87. Yang Z, Jiang J, Wang P, et al. Estimating an EQ-5D-Y-3L Value Set for China.
827 *Pharmacoeconomics* 2022;40(Suppl 2):147-55. <https://doi.org/10.1007/s40273-022-01216-9>.

828 Epub 2022 Nov 18.

829 88. Cunningham JA, Kypri K, McCambridge J. Exploratory randomized controlled
830 trial evaluating the impact of a waiting list control design. BMC Med Res Methodol
831 2013;13:150. <https://doi.org/10.1186/1471-2288-13-150>. Epub 2013 Dec 10.

832

833 **Footnotes**

834 **Authors' contributions**

835 LU, ZH, ZX, SB, and SG undertook the conceptualisation and design of the study. LU, ZH,
836 EW translated the manuals and workbooks. LU, ZH, SB, SG, and ZX selected the measures used.
837 EW, FJ, YP, HX, ZH, LU, and ZX improved the content of the manual. FJ, YP, ZH, and ZX assist
838 with administration of groups and offer clinical support. LU drafted the manuscript, with inputs
839 from ZH, SB, SG, and ZX. All authors contributed to, read and approved the final manuscript.

840 **Funding statement**

841 This research now receives fundings from Guangdong Science and Technology Program
842 (2023A1111120012) and Guangzhou Science and Technology Program (2024B03J0529).

843 **Competing interests**

844 Part of this protocol was presented as a poster at the International Society of Autism Research
845 Annual Meeting, 2024 May 16. ZX received funding from the Guangdong Science and Technology
846 Department, and ZH received funding from the Guangzhou Municipal Science and Technology
847 Bureau. The funding organisations do not influence the study design, data
848 collection/analysis/interpretation, manuscript review/approval, or publication decision. All other
849 authors declare that they have no conflicts of interest.

850 **Ethics approval**

851 This study has been approved by the Ethical Board Committee at the Third Affiliated Hospital
852 of Sun Yat-sen University (II2023-119-01), and pre-registered in Chinese Clinical Trials
853 (ChiCTR2300072136).

854 **Availability of data and materials**

855 The ethical consent and funding documents have been reviewed by the review board of the
856 Chinese Clinical Trial Registry and are available for review by the Editorial Office. Anonymised
857 data related to this study will be available from the corresponding author upon reasonable request
858 after study completion and publication of the study. The final dataset generated during this study
859 will upload to the Research Data Deposit of Sun Yat-sen University. Trial results will be reported
860 and published in scientific journals.

861 **Acknowledgments**

862 We acknowledge the generous support from the Swedish team at Karolinska
863 Institutet/Stockholm Health Services and the Australian team at Curtin University. They facilitated
864 the training, provided precious experiences and materials for the CDBC KONTAKT™ trainers. We
865 thank the CDBC KONTAKT™ team for facilitating the process of this trial. We sincerely thank
866 the autistic individual, Yihan Liu, and her families for validating the translation and contents of the
867 Chinese KONTKAT™ manual. Additionally, we appreciate Yan Li for designing the tools for the
868 KONTAKT™ CHILD programmes.

869

870 **Tables**

871 **Table 1.** Schedule of enrolment, interventions, and data collection for the study

	Involvement ^a					STUDY PERIOD						
						Enrolment	Allocation	Post-allocation				
	C	P	T	E	F							
TIME POINTS ^b						<i>-T1</i>	0	<i>T1</i>	<i>T2</i>	<i>T3</i>	<i>T4</i>	<i>T5</i>
ENROLMENT:												
Eligibility Screen				X		X						
Informed consent				X		X						
Allocation							X					
INTERVENTIONS (KONTAKT TM):												
<i>Immediate Intervention</i>	X	X	X	X	X			←————→				X
<i>Delay Intervention</i>	X	X	X	X	X			X	←————→			
DATA COLLECTION ASSESSMENTS:												
CBCL		X				X						
<i>Screening</i> WISC-IV	X			X		X						
ADOS-G	X			X		X						

	STI		X		X			X					
	SFI	X	X		X			X					
	SES		X					X					
Primary Outcomes	CASS (+CRS)	X			X					X		X	X
Secondary Outcomes	SRS-2		X	X						X		X	X
	CRSES	X								X		X	X
	Koppitz	X			X					X		X	X
	DAPT												
	SCS-DAP	X			X					X		X	X
	CORS	X											
	PRFQ		X							X		X	X
	ABAS-2		X	X						X		X	X
	PSS		X							X		X	X
	STARSS	X			X								
Process Factors	TPOCS	X			X					X	X	X	X
	PPKS	X	X					X					
	TASC	X	X			X				X	X	X	X
Fidelity Outcomes	Attendance	X	X			X							
	HCR	X				X							

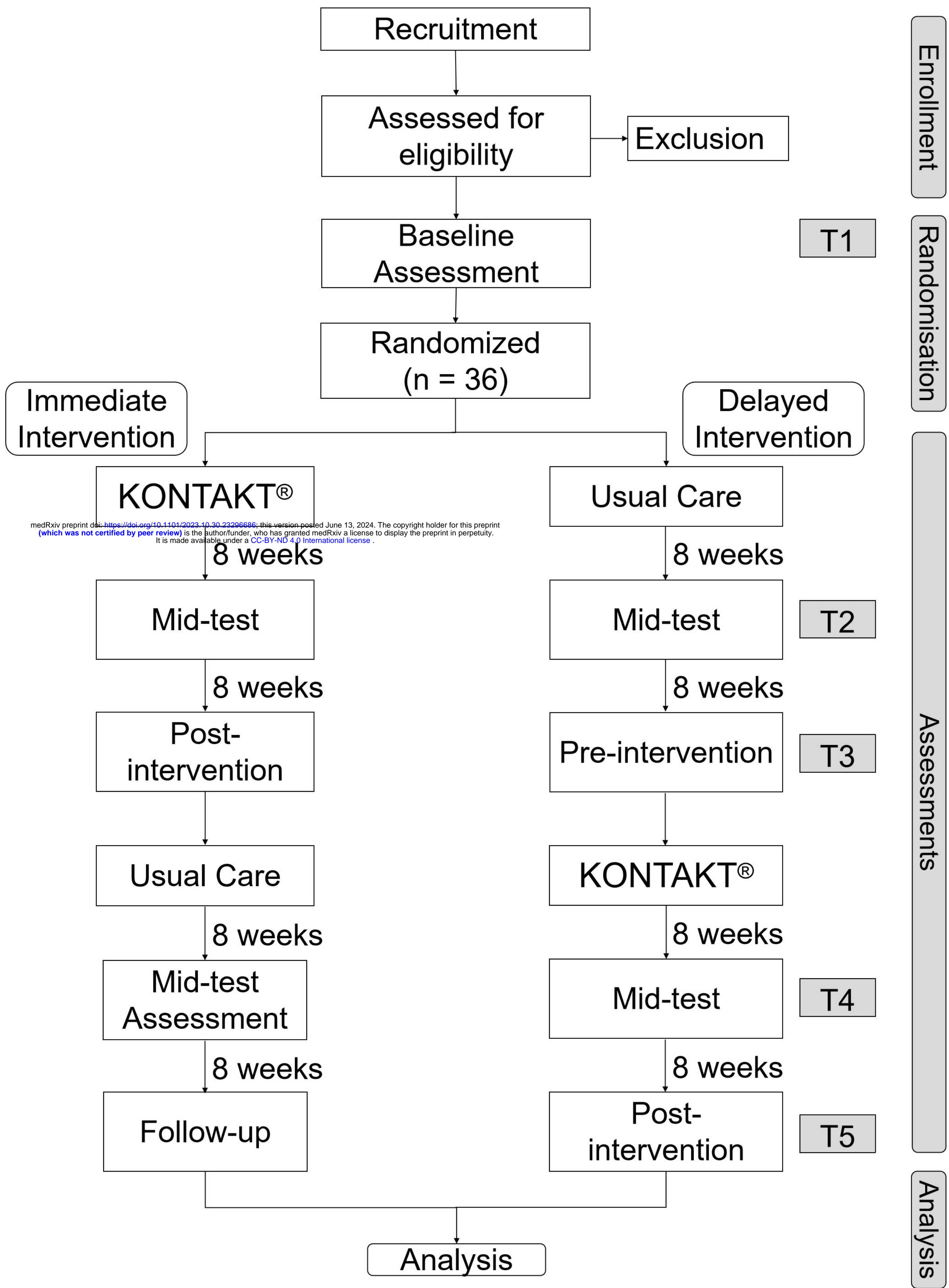
	Focus Group	X	X			X				X		X	
	KFC					X				←	→	←	→
	GSRS	X								←	→	←	→
	TFAQ		X						X	X	X	X	X
	NEQ		X								X		X
Cost-effectiv eness Outcomes	TIC-PC		X						X	X	X	X	X
	CHU9D	X							X	X	X	X	X
	EQ-5D-Y		X						X	X	X	X	X

a: Involvement: C: Child; P: Parent; T: Teacher; E: Evaluator blinded to the hypothesis; F: Trainer.

b: Time points: T1: Time 1; T2: Time 2; T3: Time 3; T4: Time 4; T5: Time 5.

Measures: ABAS-2: Adaptive Behaviour Assessment System-II; ADOS-G: Autism Diagnostic Observation Scale-Generic; CASS+CRS: Contextual Assessment of Social Skills + Conversation Rating Scale; CBCL: Child Behaviour Checklist; CHU9D: Child Health Utility 9D; CORS: Child Outcome Rating Scale; GSRS: Group Session Rating Scale; HCR: Homework Compliance Rate; KFC: KONTAKT™ Fidelity Checklist; Koppitz DAPT: Koppitz Draw-A-Person Test; NEQ: Negative Effects Questionnaire; PPKS: Preparedness for Participating KONTAKT™ Scale; PRFQ: Parental Reflective Functioning Questionnaire; PSS: Perceived school support; TASC: Therapeutic Alliance Scales for Children; TFAQ: Theoretical Framework of Acceptability Questionnaire; TIC-PC: Treatment Inventory of Costs in Patients with Psychiatric Disorders - Child Version; SCS-DAP: Self-Concept Scale-Draw-A-Person; SES: Socioeconomic Status Scale; SFI: Screening

Face Interview; STARSS: Snack Time Assessment of Relationships and Social Skills; STI: Screening Telephone Interview; SRS-2: Social Responsiveness Scale-2; WISC-IV: Wechsler Intelligence Scale for Children-IV Chinese version.



Enrollment

Randomisation

Assessments

Analysis

Goals

- Social communication and interaction skills
- Social motivation
- Social cognition
- Social competence
- Self-confidence
- Awareness of self and others
- Problem-solving strategies
- Emotion recognition and expression

Session Structure

- Opening Round
- Homework Review
- Thematic Discussion
- Group Activities
- Snack Time
- New Homework Assignment
- Closing Round

Overall Structure

- 16 weekly 60-minute sessions facilitated by 2-3 therapists with 4-6 children per group
- 3 sessions include parent meeting facilitated by one therapist
- Session 1-11 fixed themes and similar homework
- Session 12-15 individualised themes and homework
- Session 16 summary and graduation

Essential Elements

- Principles of Cognitive Behaviour Therapy
- Behavioural activation
- Psychoeducation
- Observational learning
- Computerised social cognition training
- Parental involvement

KONTAKT™

