

Association between routinely reported symptoms and 3 month hospital admission and mortality risk: a landmark analysis investigation in 86,000 individuals with heart failure in the UK

Ali MR^{a,b,c}, Lam CSP^{d,e}, Stromberg A^{f,g}, Hand SPP^h, Booth S^h, Zaccardi F^{c,i}, McCann GP^{a,b},
Khunti K^{c,i}, Lawson CA^{a,b,c}

Affiliations

- a. Department of Cardiovascular Sciences, University of Leicester, UK
- b. NIHR Leicester Cardiovascular Biomedical Research Unit, Glenfield Hospital, Leicester, UK
- c. Leicester Real World Evidence Unit, University of Leicester, UK
- d. National Heart Centre Singapore, 5 Hospital Drive, Singapore.
- e. Duke-National University of Singapore Medical School, Singapore.
- f. Department of Health, Medicine and Caring Sciences, Linköping University, Linköping, Sweden.
- g. Department of Cardiology, Linköping University, Linköping, Sweden.
- h. Department of Population Health Sciences, University of Leicester
- i. Diabetes Research Centre, University of Leicester, UK

Corresponding author:

Dr M. R. Ali, BSc, MRes, PhD
University of Leicester, Leicester, LE5 4PW, UK
Email: mra30@leicester.ac.uk

Word count: Abstract, 348; Main text, 3805; Full text including references & figures legends,

6211

ABSTRACT

Objectives: In patients with heart failure (HF), investigate the association between symptoms recorded in routine primary care consultations and short-term (3-month) hospitalisation and mortality.

Design: Landmark analysis using Royston-Parmar flexible parametric survival models fitted at three different timepoints (landmarks): baseline (diagnosis date), and 6 and 12 month post-diagnosis.

Setting: Primary care database analysis using Clinical Practice Research Datalink (CPRD), linked to hospitalisations and mortality (1998 to 2020).

Participants: Adults (>40 years) with a first code for HF diagnosis in primary or secondary care records.

Exposures: Shortness of breath (SOB), ankle swelling, oedema, fatigue, chest pain, depression and anxiety measured in a 3-month time-window prior to HF diagnosis and in survivors at 6 and 12-months.

Main outcome measures: 3-month first all-cause hospitalisation and mortality, separately. Secondary outcomes were hospitalisations for HF and non-cardiovascular disease.

Results: There were 86,882 patients with a diagnosis of HF, of whom 62,742 and 54,555 survived 6 and 12 months, respectively. There were differential symptom associations among different landmarks and outcomes. The highest risk associations for symptoms recorded just prior to diagnosis (baseline) were for depression for all-cause hospitalisation (adjusted hazard ratio: 1.26; 95% CI 1.15, 1.39), for non-cardiovascular hospitalisation (1.15; 1.10, 1.21) and death (1.22; 1.09, 1.36) and SOB for HF hospitalisation (1.18; 1.12, 1.26). Patients with HF exhibiting symptoms just prior to 6 and 12 month landmarks had increased risk of

hospitalisation and mortality: at 6-months, the highest risk associations were with symptoms of depression for all-cause hospitalisation (1.46; 1.25, 1.70) and non-CVD hospitalisation (1.46; 1.23, 1.74), SOB for HF-specific hospitalisation (1.72; 1.50, 1.98); ankle swelling for mortality (1.49; 1.14, 1.94). At the 12-month landmark, classic HF symptoms had the highest risk associations: ankle swelling for all-cause hospitalisation (1.47; 1.21, 1.79) and non-CVD hospitalisation (1.55; 1.24, 1.93); SOB for HF hospitalisation (1.99; 1.68, 2.35); and fatigue for mortality (1.57; 1.22, 2.03).

Conclusions: Symptoms reported by patients with HF in routine primary care consultations were associated with short-term risk of hospitalisations and death. These risk associations were more prominent in patients with HF at 6 and 12-months post-diagnosis than at the point of diagnosis.

Key Words: Heart failure, hospitalisations, symptoms, prognosis

INTRODUCTION

Heart failure (HF) is a complex clinical condition, often complicated by multiple long-term conditions (MLTC), that has inferior survival rates compared to numerous prevalent cancers.¹ It affects over 64 million people worldwide^{2,3} with ever increasing prevalence.⁴ The global economic cost of HF had been estimated to be \$108 billion⁵ amounting to 2% of annual health budgets.⁶ HF is the top cause of preventable hospitalisations in Europe⁷ and most of these costs are attributable to the high rate of hospitalisations,⁸ particularly for non-cardiovascular reasons.⁹ Given the 50% projected increase in HF hospitalisations by 2035, reducing hospitalisations in HF has become a key policy priority.^{10,11}

Identifying individuals with chronic heart failure who are at risk of hospitalisation remains challenging. Existing prognostic models in HF primarily focus on mortality¹² or are tailored for patients already admitted to the hospital,¹³ which limits their use in community settings. Moreover, existing models frequently rely on complex clinical data and biometrics measured at a single time point, exhibiting limited predictive efficacy.^{14,15}

HF is a clinical diagnosis where patients present with symptoms typically before investigations have been undertaken.¹⁶ Individuals diagnosed with HF frequently encounter various indications and manifestations associated with fluid overload, such as breathlessness and ankle swelling.¹⁶ Additionally, they may experience other general symptoms that could be related to their HF condition or concurrent medical conditions, including fatigue, pain, and anxiety.¹⁷ Although symptoms are associated with hospitalisations and mortality,¹⁸ they are rarely used in prognosis.^{19,20}

Symptoms in HF patients often fluctuate over time, meaning that their importance in prognosis may differ according to when they occur. For example, symptoms during the acute, diagnostic phase may have different associations with outcomes than those presenting later

during the more chronic²⁰ or end-stage.²¹ Furthermore, the association between symptoms and outcomes will likely depend on the follow-up period, with stronger associations in the short time after they are experienced. The time-varying and time-dependent nature of symptoms is rarely considered in risk prediction. Recently, the introduction of dynamic prediction, in particular landmark analysis, has provided a useful alternative to using a single-timepoint to estimate risk.²² Using this approach, symptoms and clinical characteristics are updated at different time-points and used to predict outcomes over a clinically relevant time horizon.²³

In a UK national cohort of patients with a new diagnosis of HF, we investigated common symptoms reported prior to HF diagnosis and at 6 and 12-months post-diagnosis to identify their associations with 3-month all-cause and cause-specific hospitalisation and all-cause mortality.

METHODS

Study population

We used the Clinical Practice Research Datalink (CPRD), an anonymised electronic primary database covering over 11.3 million patients.²⁴ This database is an internationally recognised population level database, representative of the general population in terms of age, sex, and ethnicity²⁴ and includes information on sociodemographic, clinical, and lifestyle factors as well as laboratory and prescription data. CPRD uses a representative sample of general practices in the UK and is linked to national datasets including Hospital Episode Statistics (HES) and Office of National Statistics (ONS), providing hospital and mortality data, respectively.

Our study included individuals aged 18 years or older who had a first recorded diagnosis of heart failure (HF) in either their primary care or hospital records between 1st January 1998 and 31st March 2020. To be eligible for the study, patients needed to have at least one year of up-to-standard clinical data (a marker of the quality of data available in CPRD) available in CPRD prior to their inclusion and be eligible for linkage to hospital and death data. HF in primary care records was based on clinically validated terms,²⁵ specifically focusing on Read codes (coded thesaurus of clinical terms used in the UK) within chapter G58, along with HF-specific Read codes from other chapters. For hospital records, we used ICD-10 codes for HF in the primary discharge position (Supplementary S1 Table for code lists). In cases where patients had both primary care and secondary care HF codes, the earliest recorded code as the HF index date, representing the date of diagnosis, was used.

Exposure identification

To identify symptoms and signs pertinent to hospitalisation in heart failure (HF) patients, we employed patient consensus²⁶ and national guidelines.¹⁶ These symptoms are routinely documented during clinical consultations in primary care. The selected symptoms encompassed shortness of breath, ankle swelling, general oedema (including both abdomen and peripheral oedema), fatigue, chest pain, general pain, anxiety, and depression. For each symptom, we utilised relevant Read codes that were recorded at least once in the three months prior to the landmark dates (diagnosis, 6, and 12 months). The code sets were reviewed and validated by a clinician (S2 Table).

Measurement of covariates

Based on existing evidence,²⁷ the covariates included in our analysis encompassed sociodemographic variables (age, sex, ethnicity, and socioeconomic status), lifestyle factors (body mass index (BMI), alcohol consumption, and smoking status), drug prescriptions (beta blockers, renin angiotensin system inhibitors (angiotensin-converting enzyme (ACE) inhibitors or angiotensin receptor blockers (ARB)), angiotensin receptor neprilysin inhibitors (ARNI), alpha blockers, sodium-glucose cotransporter (SGLT) 2 inhibitors, aspirin, statins, sodium-glucose cotransporter (SGLT) 2 inhibitors, and loop diuretics) and physiological data (systolic blood pressure, haemoglobin levels, cholesterol levels, and estimated glomerular filtration rate (eGFR)). Additionally, we accounted for several comorbidities, including hypertension, diabetes, ischaemic heart disease (IHD), myocarditis, cerebrovascular accident (stroke), atrial fibrillation (AF), asthma, cancer, cardiomyopathy, chronic obstructive pulmonary disease (COPD), chronic kidney disease (CKD), osteoarthritis (OA), rheumatoid arthritis (RA), dementia, and depression. As a surrogate measure for heart failure (HF) severity, we utilised hospitalisation history (within one month; one to three months; or three to 12 months prior to the landmark point).²⁸

To assess socioeconomic status, we utilised the Index of Multiple Deprivation (IMD), a composite measure comprising seven indicators weighted to reflect deprivation in various domains such as income, employment, education, skills and training, health, crime, and barriers to housing.²⁹ For chronic comorbidities, except for diabetes and depression, we considered the presence of at least one Read or ICD-10 code recorded before the landmark date. As depression may have intermittent occurrences, we defined it based on the presence of at least one code or prescription within a 12-month period prior to the landmark date. Diabetes was defined by clinical code or prescription at any time prior to the landmark date. Prescribed medications were identified through at least one prescription within the four months preceding the landmark date. All other covariates were captured based on their most recent values prior to the landmark date: these were updated at the different landmark points to account for changes in treatment status and disease history.

Outcomes

Patients were followed up for 3-months after each landmark (diagnosis, and 6 and 12 month post diagnosis) point for first hospitalisation for any-cause, HF, and non-CVD causes; and for death.

Statistical analysis

First, characteristics of included patients are presented for the different landmarks (diagnosis, 6, and 12 months after diagnosis). Second, at each landmark point, Royston Parmar flexible parametric survival models³⁰ were used to estimate the association between each symptom and 3-month first all-cause and cause specific hospitalisation and mortality, using the “stpm2” command in Stata 17 (StataCorp, College Station, TX, USA). All individuals were

included in the baseline model and all survivors at the subsequent landmarks in the 6 and 12-month models. Survivors were patients who were alive, had not transferred out of their practice and their practice was still contributing data to CPRD at the 6 and 12 month landmark dates. Assuming a missing at random mechanism, multiple imputation using chained equations was performed to impute socioeconomic status, ethnicity, and physiological data (missingness information is reported in Table 1), generating 10 imputed datasets with the results combined using Rubin's rules.³¹ Multicollinearity between all variables in the model was assessed and linearity between each continuous variable and outcome was determined using likelihood ratio tests,³² Akaike and Bayesian Information Criteria (AIC and BIC), comparing models with different transformations (a quadratic extension or restricted cubic splines with three degrees of freedom). Unadjusted hazard ratios with 95% confidence intervals were estimated followed by adjustment of each symptom by all covariates. Depression comorbidity was not included in the 3-month history of depression symptom due to collinearity. A sensitivity analysis was undertaken using complete case analysis (S4 Table).

Ethics approval

Approval for this study (protocol 20_000056) was provided by CPRD's Research Data Governance Process. This process provides independent scientific and patient advice by an expert review and central advisory committee. National research ethics committee provided ethics approval for use of CPRD data (05/MRE04/87/AM06).

Patient and public involvement

A consensus study³⁴ was conducted with HF patients, carers, and their clinicians which identified a core set of symptoms experienced by people with HF before hospitalisation.

RESULTS

At diagnosis (baseline) there were 86,882 patients with HF: the median age was 79 (IQR: 71-86) years and 49% were female (Table 1). There were 62,742 survivors at 6 months and 54,555 (Figure 1) at 12-months (median age: 78 [70-84] and 77 [69-84] years, respectively; both 47% female). Prescription rates prior to diagnosis were relatively low (RASi, 50%; beta blocker, 33%) but increased in survivors by the 6 and 12 month landmark (71% and 45%, respectively). Prevalence of comorbidities were generally higher in survivors at 6 and 12-months whilst smoking reduced.

Symptom prevalence across landmark times

Symptoms were measured in a three-month window prior to each landmark time (supplementary S3). The number of patients reporting at least one symptom was 42,327 (51.3%) prior to diagnosis; 15,613 (24.9%) prior to 6-month landmark; and 12,808 (23.5%) prior to 12-months. The most frequently recorded symptoms prior to diagnosis were SOB (27.9%), depression (12.8%), oedema (11.0%), and fatigue (6.6%) (Figure 1). Pain was the most frequently recorded symptom prior to the 6- and 12-month landmarks (11.1% and 11.4%, respectively), followed by SOB (8.6% and 7.5%), oedema (both 4%), and chest pain (2.7% and 2.6%) (Figure 1).

Symptom prediction when measured from diagnosis (baseline)

At baseline (symptoms measured prior to diagnosis), the symptoms associated with the highest risk of hospitalisation for any cause were depression (adjusted hazard ratio (aHR):

1.26; 95% confidence interval 1.15 to 1.39), fatigue (1.11; 1.02, 1.20) and chest pain (1.11; 1.05, 1.17) (Figure 3 and S3). For HF hospitalisation the symptoms associated with the highest risk were SOB (1.18; 1.12, 1.26) and general oedema (1.14; 1.05, 1.24), for non-cardiovascular admission were pain (1.15; 1.10, 1.21), depression (1.37; 1.22, 1.54) and fatigue (1.12; 1.02, 1.24) and for death were depression (1.22; 1.09, 1.36), and pain (1.06; 1.01, 1.11) (Figure 3). SOB showed a protective effect for the outcome of mortality (0.76; 0.74, 0.79) as did chest pain (0.79; 0.74, 0.85) (Figure 4). Complete case-analyses for all outcomes can be found in S4.

Symptom prediction when measured from 6-month landmark time

Whilst the prevalence of recorded symptoms was lower at the 6 and 12-months landmarks, the strength of associations between symptoms and all outcomes generally increased. At the 6-month landmark time, the symptoms associated with the highest risk of hospitalisation for any cause were depression (aHR: 1.46; 95% CI: 1.25, 1.70), SOB (1.29; 1.21, 1.37), anxiety (1.25; 1.04, 1.50), fatigue (1.24; 1.07, 1.43), general oedema (1.19; 1.09, 1.30), chest pain (1.13; 1.02, 1.25) and general pain (1.11; 1.05, 1.18); for HF admission were anxiety (1.94; 1.32, 2.85), depression (1.85; 1.31, 2.62), SOB (1.72; 1.50, 2.98), general oedema (1.43; 1.18, 1.74) and fatigue (1.41; 1.02, 1.95); and for non-CVD admission were depression (1.46; 1.23, 1.74), fatigue (1.31; 1.12, 1.53), SOB (1.23; 1.14, 1.32), general pain (1.18; 1.10, 1.26), and general oedema (1.17; 1.06, 1.29) (Figure 3). Finally, for mortality, the symptoms associated with the highest risk were anxiety (1.56; 1.16, 2.10), ankle swelling (1.49; 1.14, 1.94), depression (1.47; 1.12, 1.93), SOB (1.41; 1.27, 1.57) and general oedema (1.37; 1.19, 1.58) (Figure 4).

Symptom prediction when measured from 12-month landmark time

From the 12-months landmark, all the symptoms had statistically significant risk associations with any cause of hospitalisation. The symptoms associated with the highest risk of hospitalisation for any cause were ankle swelling (aHR 1.47; 95% CI: 1.21, 1.79), fatigue (1.45; 1.24, 1.69) and depression (1.33; 1.10, 1.61); for HF admission were SOB (1.99; 1.68, 2.35), fatigue (1.78; 1.24, 2.56) and general oedema (1.64; 1.29, 2.08); and for non-CVD admission they were ankle swelling (1.55; 1.24, 1.93), depression (1.35; 1.10, 1.67), fatigue (1.32; 1.10, 1.58), general oedema (1.25; 1.11, 1.41), general pain (1.23; 1.14, 1.33) and SOB (1.21; 1.11, 1.32) (Figure 3). Symptoms associated with the highest risk of mortality were fatigue (1.57; 1.22, 2.03), depression (1.48; 1.07, 2.04), oedema (1.39; 1.17, 1.65). Compared to the baseline where SOB was protective, at 12 months it showed a significant and increased risk of mortality (1.25; 1.10, 1.43) (Figure 4).

DISCUSSION

The timing of symptom recording in relation to the outcome is crucial, especially considering the transient nature of symptoms.^{33,34} To our knowledge, this is the first study in the general practice population of patients with HF to report symptom risk associations, accounting for their time-varying and time-dependent nature. We found HF specific and generic symptoms to be significantly associated with increased rates of 3-month hospitalisation and mortality at all three timepoints, with stronger associations in a more stable state population at 6 and 12-months. Furthermore, symptoms recorded in routine primary care were found to modestly improve the discrimination of prognostic models, with good model performance at 6 and 12-months. This has important clinical significance for identifying patients with HF in the community, who are at the highest risk of imminent hospitalisation and mortality.

Prior evidence has shown conflicting evidence in the risk associations between symptoms and clinically important outcomes such as hospitalisation and mortality in HF.^{35–38} However, this may be explained by studies using a single time-point, usually at diagnosis or during hospitalisation (where patients are often less stable), to measure symptoms. Failure to account for the time-varying nature of symptoms may contribute to the conflicting evidence as changes in treatments, severity of disease, and newer diagnoses of comorbidities are likely to confound these associations. By using landmark analysis, we were able to account for changes in symptoms and important covariates such as prescribed treatments and physiological status.

Psychological symptoms, such as depression and anxiety, are important predictors in HF and yet they continue to be under recognised in prognosis.³⁹ With the exception of HF admission, depression prior to diagnosis was a key predictor of all outcomes. Anxiety and depression were also key symptoms at 6 months, with anxiety associated with a 2-fold increase and depression an 80% increase in rates of hospitalisation for HF. Anxiety at 6 months was also associated with a 50% increase in the mortality rate. Consistent with previous recommendations, routine assessments of anxiety and depression symptoms in the HF patient population are urgently required.^{40–42}

HF and non-HF symptoms are important indicators of clinical status and used in routine assessment,¹⁶ but little is known about their prognostic importance, with conflicting evidence in prediction.^{35–38} Notably, the risk associations between non-HF symptoms and outcomes (including HF admission) merits attention, especially as guidelines focus on HF specific symptoms.¹⁶ This study underscores the importance of both HF and non-HF symptoms in risk assessments.

Most admissions in HF patients are for non-CVD causes. Our study revealed robust and higher risk associations between HF symptoms and non-CVD hospitalisation, implying

HF patients may be admitted to hospital for non-CVD causes that could be due to their MLTCs. This is particularly concerning given that HF patients to non-cardiology wards have different demographics compared to those treated in cardiology services and have higher risk of adverse outcomes compared to patients admitted to cardiology wards.⁴³

This study shows that symptoms could be an important and early indicator of imminent hospital admission. However, there is an urgent need to develop ways for patients to monitor these symptoms more closely. Many patients rarely formally record their symptoms and some don't report them. Despite the mounting pressures on consultation times in primary care,⁴⁴ utilising symptoms at diagnosis and beyond emerges as a potentially simple and cost-effective method to identify high risk patients, compared to using blood tests or expensive scans, where there are delays in provision. This is particularly important as a growing body of research has shown PROMs recording tools such as Kansas City Cardiomyopathy Questionnaires (KCCQ) able to predict imminent deterioration and risk of hospitalisation and mortality.^{127,385} Albeit, an important consideration is the extra time and resource required to record PROMs and any implementation should be carried out in consultation with primary care health professional and patients.⁴⁵ That said, challenges persist for patients and clinicians in recognising relevant symptoms,⁴⁶ particularly patients with a multimorbid history.⁴⁷ Overall, symptoms may prove to be a valuable, easily accessible method for improving patient outcomes and should be considered and prioritised in future risk prediction strategies.

Our data showed a variation in the associations between symptoms and outcomes at different timepoints. Symptoms recorded 6 months and 12 months post-diagnosis had stronger associations with outcomes than those observed at diagnosis. Given the high mortality risk in the first few months following HF diagnosis,^{16,28} this variation is likely due to the lower baseline risk in survivors at 6-months and beyond, leading to higher relative

effects and better discrimination and highlights the importance of symptom monitoring in the community where most HF patients are managed.

The study strengths include the large national database of people with a new diagnosis of HF over 20-years. To account for the high comorbidity burden in HF patients and the variations in symptom presentation, we used a broad spectrum of symptoms recorded routinely in primary care at different timepoints. Using the landmark analysis approach, we were able to account for the time-varying nature of symptoms and covariates and investigate the temporal relationship between symptoms and imminent hospitalisation and mortality.

However, several limitations need to be acknowledged. Although there is some evidence of large population databases in primary care recording symptoms,⁴⁸ these may be incomplete. However, under reporting would likely bias the associations towards the null value, leading to underestimated associations in this study. We did not have access to HF phenotype information and further work is needed to ascertain whether symptom associations differ by phenotype. Likewise, we did not have HF severity measures such as ejection fraction, NYHA, or natriuretic peptides. Moreover, we chose the landmarks a priori for clinical reasons. Shorter, longer, or more frequent landmark times may provide better data on important timepoints for symptoms and requires further research.

In conclusion, symptoms recorded routinely in primary care were significantly associated with increased rates of hospitalisation and death and provide the potential for a simple and patient centred approach to prognosis. Of particular clinical note is our findings that symptoms in patients with HF 6 and 12 month post diagnosis may be more important clinically and prognostically than those experienced around their diagnosis date. Efforts to improve the reporting and recording of symptoms are urgently required.

SUMMARY BOX

What is already known on this topic

- Heart failure (HF) is the leading cause of preventable hospitalisations in Europe.
- The identification of imminent risk of hospitalisation in HF poses a critical challenge and existing prediction models utilise complex information, lack patient-centeredness, and demonstrate suboptimal performance.
- Symptoms and other biomarkers are often recorded at a single time-point to predict risk without accounting for the time-varying and time-dependent nature of symptoms.

What this study adds

- Common symptoms among HF patients are associated with a significant risk of both imminent hospitalisations and mortality.
- The presence of both HF-specific and general symptoms plays a crucial role in predicting the risk of HF-related hospitalisations, emphasising the significance of integrated care for heart failure and comorbidities.
- Considering symptoms as time-varying covariates is important clinically as we have shown symptoms recorded post diagnosis can be even more important than those reported at diagnosis.

Data sharing

MRA and CL had full access to all the data in the study and takes responsibility for the integrity of the data and the accuracy of the data analysis. This study is based in part on data from the Clinical Practice Research Datalink obtained under licence from the UK Medicines and Healthcare products Regulatory Agency. However, the interpretation and conclusions

contained in this report are those of the author/s alone. Data access is through permissions from CPRD only.

Acknowledgements

KK is supported by the National Institute for Health Research (NIHR) Applied Research Collaboration East Midlands (ARC EM) and the NIHR Leicester Biomedical Research Centre (BRC). GPM is funded by the NIHR (RP-2017-08-ST2-007) and receives support from the NIHR Leicester BRC.

Competing interests

All authors have completed the ICMJE uniform disclosure form at www.icmje.org/coi_disclosure.pdf and declare:

Carolyn SP Lam is supported by a Clinician Scientist Award from the National Medical Research Council of Singapore; has received research support from NovoNordisk and Roche Diagnostics; has served as consultant or on the Advisory Board/ Steering Committee/ Executive Committee for Alleviant Medical, Allysta Pharma, Amgen, AnaCardio AB, Applied Therapeutics, AstraZeneca, Bayer, Boehringer Ingelheim, Boston Scientific, CardioRenal, Cytokinetics, Darma Inc., EchoNous Inc, Eli Lilly, Impulse Dynamics, Intellia Therapeutics, Ionis Pharmaceutical, Janssen Research & Development LLC, Medscape/WebMD Global LLC, Merck, Novartis, Novo Nordisk, Prosciento Inc, Radcliffe Group Ltd., Recardio Inc, ReCor Medical, Roche Diagnostics, Sanofi, Siemens Healthcare Diagnostics and Us2.ai; and serves as co-founder & non-executive director of Us2.ai.

KK has acted as a consultant, speaker or received grants for investigator-initiated studies for Astra Zeneca, Bayer, Novartis, Novo Nordisk, Sanofi-Aventis, Lilly and Merck Sharp & Dohme, Boehringer Ingelheim, Oramed Pharmaceuticals, Roche and Applied Therapeutics.

Anna Strömberg has acted as a speaker for Astra Zeneca, Bayer, Novartis, and, Boehringer Ingelheim.

Transparency statement

The lead author (MRA) affirms that the manuscript is an honest, accurate, and transparent account of the study being reported; that no important aspects of the study have been omitted; and that any discrepancies from the study as originally planned have been explained.

Role of the funding source

An NIHR Advanced Fellowship [Reference NIHR300111] funding supported this study. The study sponsors had no role in the design and conduct of the study; collection, management, analysis, and interpretation of the data; preparation, review, or approval of the manuscript; and decision to submit the manuscript for publication. The views and opinions expressed therein are those of the authors and do not necessarily reflect those of the NIHR.

Contributors

MRA— guarantor of the research, literature search, study design, data analysis, data interpretation, figures and writing. CSPL—data interpretation and writing. AS—data interpretation and writing. SPPH—figures, data interpretation and writing. SB—figures, study design, data interpretation and writing. FZ—study design, data interpretation and writing. GPM—data interpretation and writing. KK—study design, data interpretation and writing. CAL—literature search, study design, data analysis, data interpretation, figures and writing.

Transparency

The lead author affirms that the manuscript is an honest, accurate, and transparent account of the study being reported, that no important aspects of the study have been omitted, and that

any discrepancies from the study as originally planned (and, if relevant, registered) have been explained.

Table 1: Patient characteristics prior to and, 6-, and 12-months after HF diagnosis

	Baseline N=86,882	6 months N=62,742	12 months N=54,555
Age at diagnosis (years)	79.0 (71.0-86.0)	78.0 (70.0-84.0)	77.0 (69.0-84.0)
Female	42,415 (49%)	29,749 (47%)	25,787 (47%)
Ethnicity			
White	77,442 (89%)	57,404 (91%)	50,215 (92%)
South Asian	1,238 (1%)	1,004 (2%)	879 (2%)
Black	637 (1%)	520 (1%)	437 (1%)
Other - mixed	712 (1%)	522 (1%)	453 (1%)
Unknown	4,638 (5%)	2,350 (4%)	1,860 (3%)
<i>Missing</i>	<i>2,215 (3%)</i>	<i>942 (2%)</i>	<i>711 (1%)</i>
IMD level			
1 (least deprived)	16,701 (19%)	12,251 (20%)	10,635 (19%)
2	19,775 (23%)	14,326 (23%)	12,366 (23%)
3	18,580 (21%)	13,351 (21%)	11,637 (21%)
4	17,166 (20%)	12,300 (20%)	10,713 (20%)
5 (most deprived)	14,502 (17%)	10,426 (17%)	9,141 (17%)
<i>Missing</i>	<i>158 (<1%)</i>	<i>88 (<1%)</i>	<i>63 (<1%)</i>
HF diagnosis in secondary care	32,456 (37%)	19,878 (32%)	16,466 (30%)
Previous any-cause hospitalisation			
None	30,494 (35%)	22,344 (36%)	24,305 (45%)
Within 1 month	44,738 (51%)	3,714 (6%)	2,883 (5%)
1-3 months	4,949 (6%)	5,183 (8%)	3,590 (7%)
3-12 months	6,701 (8%)	31,501 (50%)	23,777 (44%)
Treatments			
RASI	43,763 (50%)	44,511 (71%)	38,828 (71%)
ACE	35,223 (41%)	36,768 (59%)	30,764 (56%)
Aspirin	35,434 (41%)	28,495 (45%)	24,514 (45%)
Beta blocker	28,665 (33%)	28,320 (45%)	24,990 (46%)
Statin	31,428 (36%)	28,069 (45%)	25,271 (46%)
SGLT2	51 (<1%)	49 (<1%)	49 (<1%)
Loop diuretic	45,987 (53%)	45,292 (72%)	37,631 (69%)
Comorbidities			
AF	34,513 (40%)	27,065 (43%)	24,068 (44%)
Cardiomyopathy	3,190 (4%)	3,881 (6%)	3,909 (7%)
Hypertension	56,013 (64%)	42,110 (67%)	37,277 (68%)
IHD	43,922 (51%)	34,058 (54%)	30,641 (56%)
Myocarditis	207 (<1%)	202 (<1%)	189 (<1%)
CVA	16,090 (19%)	11,389 (18%)	9,992 (18%)
Diabetes	20,783 (24%)	15,764 (25%)	13,354 (24%)
CKD (<60ml/min/m ²)	36,987 (56%)	30,143 (59%)	27,238 (59%)
Depression	1,440 (2%)	738 (1%)	605 (1%)
Asthma	16,562 (19%)	12,578 (20%)	11,195 (21%)
Cancer	19,706 (23%)	13,918 (22%)	12,181 (22%)
COPD	16,574 (19%)	12,537 (20%)	11,127 (20%)
Dementia	4,199 (5%)	2,499 (4%)	2,127 (4%)
OA	32,578 (37%)	24,047 (38%)	21,286 (39%)
RA	6,354 (7%)	4,618 (7%)	4,099 (8%)
Physiological/lifestyle			
BMI (Kg/m ²)	27.8 (±6.1)	27.9 (±6.1)	27.9 (±6.1)
eGFR (ml/min/m ²)	57.4 (±21.1)	56.6 (±21.0)	56.1 (±21.1)

Systolic BP (mmHg)	137.7 (±22.0)	133.6 (±21.4)	132.8 (±20.5)
Cholesterol (mmol/L)	4.6 (±1.2)	4.6 (±1.2)	4.5 (±1.2)
Haemoglobin (g/dL)	12.9 (±1.9)	13.0 (±1.8)	13.0 (±1.8)
Smoking			
Yes	17,317 (20%)	11,687 (19%)	9,852 (18%)
No	38,386 (44%)	27,482 (44%)	23,791 (44%)
Ex	25,722 (30%)	20,460 (33%)	18,525 (34%)
	<i>Missing</i> 5,457 (6%)	<i>3,113 (5%)</i>	<i>2,387 (4%)</i>
Alcohol			
Yes	52,753 (61%)	39,248 (63%)	34,407 (63%)
No	18,554 (21%)	13,318 (21%)	11,624 (21%)
Ex	2,973 (3%)	2,323 (4%)	2,148 (4%)
	<i>Missing</i> 12,602 (15%)	<i>7,853 (13%)</i>	<i>6,376 (12%)</i>

Values are median (interquartile range), n (%), or mean ± SD. ACE = angiotensin-converting enzyme; ARB = angiotensin receptor blocker; ARNI = Angiotensin receptor-neprilysin inhibitor ; AF = atrial fibrillation; BMI = body mass index; BP = blood pressure; COPD = chronic obstructive pulmonary disease; CKD = chronic kidney disease; CVA = cerebrovascular accident (Stroke); eGFR = estimated glomerular filtration rate; Hb =haemoglobin; IHD = ischaemic heart disease; IMD = index multiple deprivation; OA = osteoarthritis; RA = rheumatoid arthritis; RASI = renin–angiotensin system inhibitor; SGLT2 = Sodium-glucose Cotransporter-2 inhibitors.

Figure 1 Flow chart of number of patients per landmark time

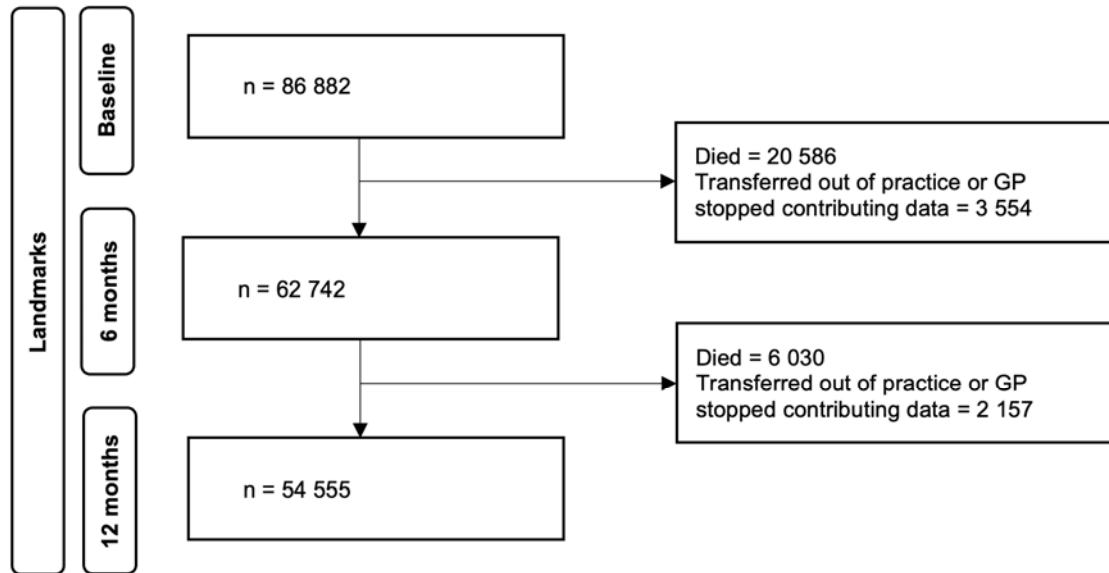
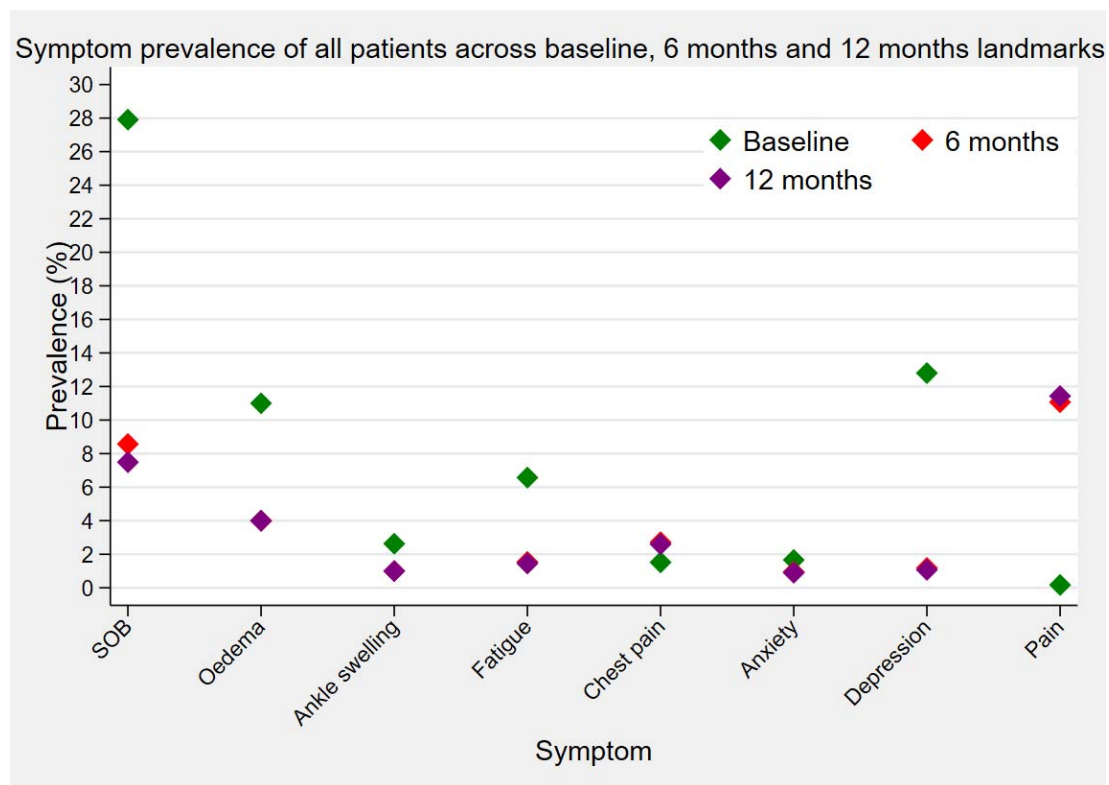
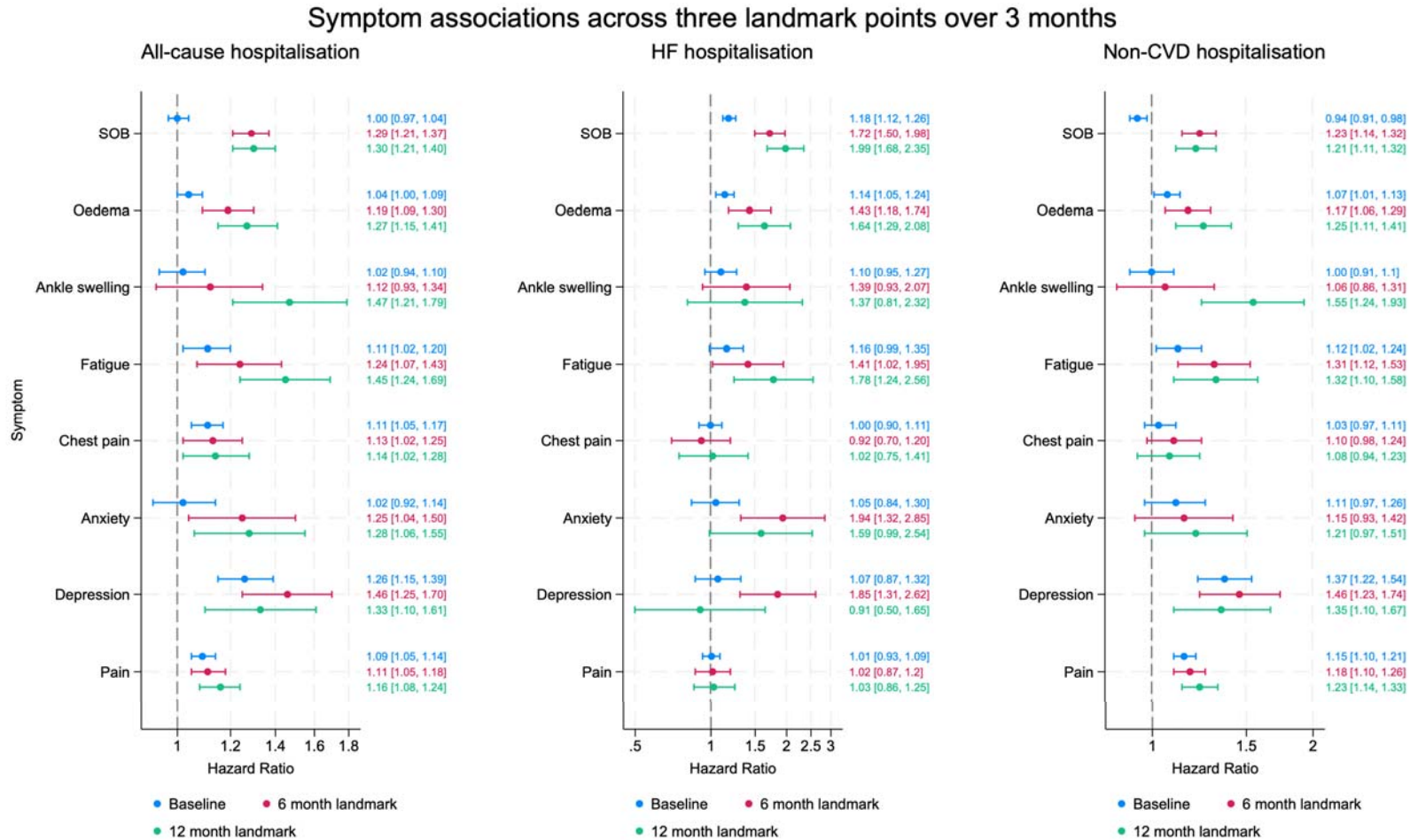


Figure 2 Symptom prevalence across baseline, 6-, and 12-months landmark times



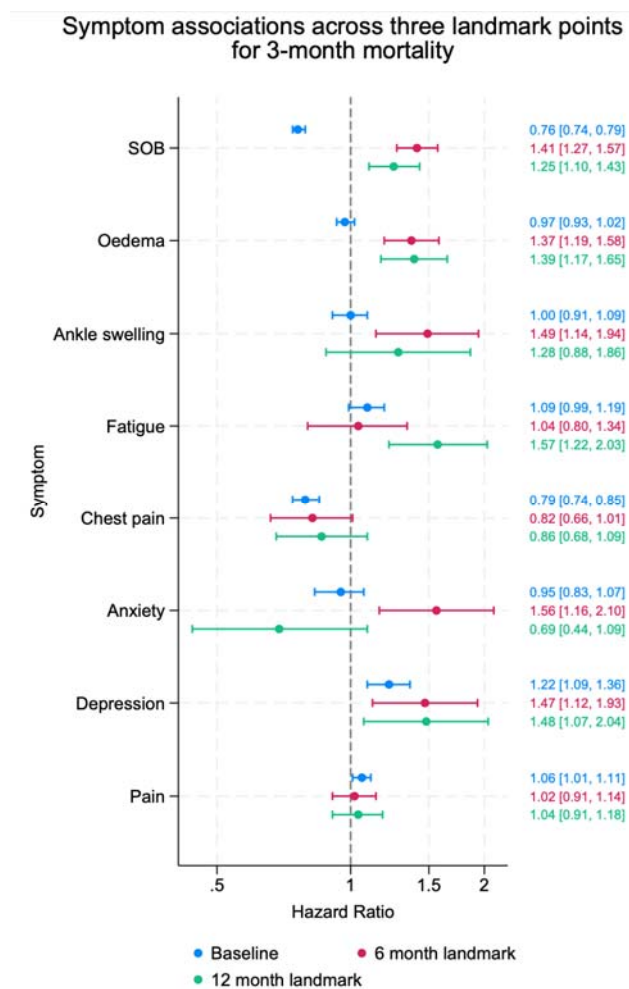
Symptom prevalence were similar between 6 and 12 months landmark points so where a red diamond (denoted 6 month landmark) is not visible, it is behind the purple diamond (12 month landmark).

Figure 3 Symptom associations across three different landmarks for all-cause hospitalisation, HF and non-CVD hospitalisation



Forest plot of adjusted effect estimates between symptoms and hospitalisation. Survival models at three different landmarks adjusted for the following covariates: age, sex, ethnicity, deprivation, BMI, diagnosis in hospital or primary care, comorbidities and depression. BMI, body mass index; CVD, cardiovascular disease; HF, heart failure.

Figure 4 Symptom associations across three different landmarks for all-cause mortality



Forest plot of adjusted effect estimates between symptoms and hospitalisation. Flexible parametric survival models at three different landmarks adjusted for the following covariates: age, sex, ethnicity, deprivation, BMI, diagnosis in hospital or primary care, comorbidities and depression. BMI, body mass index.

References

1. Mamas, M. A. *et al.* Do patients have worse outcomes in heart failure than in cancer? A primary care-based cohort study with 10-year follow-up in Scotland. *European Journal of Heart Failure* **19**, 1095–1104 (2017).
2. Lippi, G. & Sanchis-Gomar, F. Global epidemiology and future trends of heart failure. *AME Medical Journal* **5**, 1–6 (2020).
3. GBD 2017 Causes of Death Collaborators. Global, regional, and national age-sex-specific mortality for 282 causes of death in 195 countries and territories, 1980-2017: a systematic analysis for the Global Burden of Disease Study 2017. *Lancet* **392**, 1736–1788 (2018).
4. Roth, G. A. *et al.* Demographic and epidemiologic drivers of global cardiovascular mortality. *N Engl J Med* **372**, 1333–1341 (2015).
5. Cook, C., Cole, G., Asaria, P., Jabbour, R. & Francis, D. P. The annual global economic burden of heart failure. *Int J Cardiol* **171**, 368–376 (2014).
6. Liao, L., Allen, L. A. & Whellan, D. J. Economic burden of heart failure in the elderly. *Pharmacoeconomics* **26**, 447–462 (2008).
7. OECD & Union, E. Health at a Glance: Europe 2018. (2018).
8. Cowie, M. R. *et al.* Improving care for patients with acute heart failure: before, during and after hospitalization. *ESC Heart Fail* **1**, 110–145 (2014).
9. Lawson, C. A. *et al.* Risk factors for heart failure: 20-year population-based trends by sex, socioeconomic status, and ethnicity. *Circulation: Heart Failure* (2020)
doi:10.1161/CIRCHEARTFAILURE.119.006472.
10. National Institute for Health and Care Excellence. *Chronic Heart Failure (Update): Prioritised Quality Improvement Areas for Development*. (2015).
11. Heart Failure Policy Network. *Preventing Hospital Admissions in Heart Failure: A European Case Study for Building Resilience and Sustainability of Healthcare Systems*. (2021).

12. Alba, A. C. *et al.* Risk prediction models for mortality in ambulatory patients with heart failure: a systematic review. *Circ Heart Fail* **6**, 881–889 (2013).
13. Mahajan, S. M., Heidenreich, P., Abbott, B., Newton, A. & Ward, D. Predictive models for identifying risk of readmission after index hospitalization for heart failure: A systematic review. *European Journal of Cardiovascular Nursing* **17**, 675–689 (2018).
14. Ouwerkerk, W., Voors, A. A. & Zwinderman, A. H. Factors influencing the predictive power of models for predicting mortality and/or heart failure hospitalization inpatients with heart failure. *JACC: Heart Failure* **2**, 429–436 (2014).
15. Voors, A. A. *et al.* Development and validation of multivariable models to predict mortality and hospitalization in patients with heart failure. *Eur J Heart Fail* **19**, 627–634 (2017).
16. McDonagh, T. A. *et al.* 2021 ESC Guidelines for the diagnosis and treatment of acute and chronic heart failure. *Eur Heart J* **42**, 3599–3726 (2021).
17. Alpert, C. M., Smith, M. A., Hummel, S. L. & Hummel, E. K. Symptom burden in heart failure: assessment, impact on outcomes, and management. *Heart Failure Reviews* **22**, 25–39 (2017).
18. Ali, M. R. *et al.* Symptoms and signs in patients with heart failure: association with 3-month hospitalisation and mortality. *Heart* heartjnl-2023-323295 (2023) doi:10.1136/heartjnl-2023-323295.
19. Sutcliffe, P. *et al.* Use of classical and novel biomarkers as prognostic risk factors for localised prostate cancer: a systematic review. *Health Technol Assess* **13**, iii, xi-xiii 1–219 (2009).
20. Vaduganathan, M., Claggett, B. L., McMurray, J. J. V. & Solomon, S. D. Health Status Trajectories Before and After Hospitalization for Heart Failure. *Circulation* (2022) doi:10.1161/CIRCULATIONAHA.122.059282.
21. Levenson, J. W., McCarthy, E. P., Lynn, J., Davis, R. B. & Phillips, R. S. The last six months of life for patients with congestive heart failure. *J Am Geriatr Soc* **48**, S101-109 (2000).

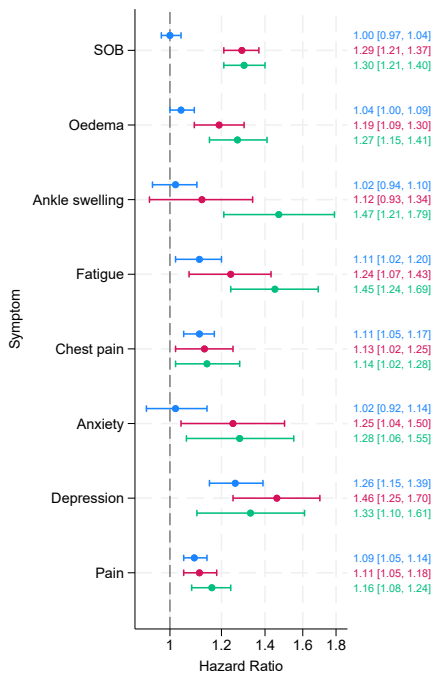
22. Njagi, E. N., Rizopoulos, D., Molenberghs, G., Dendale, P. & Willekens, K. A joint survival-longitudinal modelling approach for the dynamic prediction of rehospitalization in telemonitored chronic heart failure patients. *Statistical Modelling* **13**, 179–198 (2013).
23. Schumacher, M., Hieke, S., Ihorst, G. & Engelhardt, M. Dynamic prediction: A challenge for biostatisticians, but greatly needed by patients, physicians and the public. *Biom J* **62**, 822–835 (2020).
24. Herrett, E. *et al.* Data Resource Profile: Clinical Practice Research Datalink (CPRD). *Int J Epidemiol* **44**, 827–836 (2015).
25. Maru, S. *et al.* Antidiabetic drugs and heart failure risk in patients with type 2 diabetes in the U.K. primary care setting. *Diabetes Care* **28**, 20–26 (2005).
26. Lawson, C. A. *et al.* Developing a core outcome set for patient-reported symptom monitoring to reduce hospital admissions for patients with heart failure. *Eur J Cardiovasc Nurs* zvac019 (2022) doi:10.1093/eurjcn/zvac019.
27. Rushton, C. A., Satchithananda, D. K., Jones, P. W. & Kadam, U. T. Non-cardiovascular comorbidity, severity and prognosis in non-selected heart failure populations: A systematic review and meta-analysis. *Int J Cardiol* **196**, 98–106 (2015).
28. Lawson, C. A. *et al.* 20-Year Trends in Cause-Specific Heart Failure Outcomes By Sex, Socioeconomic Status, and Place of Diagnosis: a Population-Based Study. *The Lancet Public Health* **4**, e406–e420 (2019).
29. McLennan, D. *et al.* English Indices of Deprivation 2019: technical report. 117 (2019).
30. Royston, P. & Lambert, P. C. *Flexible Parametric Survival Analysis Using Stata: Beyond the Cox Model*. (Stata Press, College Station, TX, 2011).
31. Rubin, D. B. *Multiple Imputation for Nonresponse in Surveys*. (Wiley, New York, 1987).
32. Vatcheva, K. P., Lee, M., McCormick, J. B. & Rahbar, M. H. Multicollinearity in Regression Analyses Conducted in Epidemiologic Studies. *Epidemiology (Sunnyvale)* **6**, 227 (2016).

33. Van Riet, E. E. S. *et al.* Prevalence of unrecognized heart failure in older persons with shortness of breath on exertion. *European Journal of Heart Failure* **16**, 772–777 (2014).
34. Moser, D. K. *et al.* Identification of symptom clusters among patients with heart failure: an international observational study. *Int J Nurs Stud* **51**, 1366–1372 (2014).
35. Jering, K. *et al.* Burden of Heart Failure Signs and Symptoms, Prognosis, and Response to Therapy: The PARAGON-HF Trial. *JACC. Heart failure* **9**, 386–397 (2021).
36. Kaya, H. *et al.* Increased frequency of occurrence of bendopnea is associated with poor outcomes in heart failure outpatients. *Acta Cardiologica* (2020) doi:10.1080/00015385.2020.1797303.
37. Volz, A. *et al.* Predictors of readmission and health related quality of life in patients with chronic heart failure: a comparison of different psychosocial aspects. *Journal of behavioral medicine* **34**, 13–22 (2011).
38. Espinosa, B. *et al.* Prognosis of acute heart failure based on clinical data of congestion. *Rev Clin Esp (Barc)* **222**, 321–331 (2022).
39. Celano, C. M., Villegas, A. C., Albanese, A. M., Gaggin, H. K. & Huffman, J. C. Depression and Anxiety in Heart Failure: A Review. *Harvard Review of Psychiatry* **26**, 175–184 (2018).
40. Lossnitzer, N. *et al.* Incidence rates and predictors of major and minor depression in patients with heart failure. *International Journal of Cardiology* **167**, 502–507 (2013).
41. Easton, K., Coventry, P., Lovell, K., Carter, L.-A. & Deaton, C. Prevalence and Measurement of Anxiety in Samples of Patients With Heart Failure: Meta-analysis. *Journal of Cardiovascular Nursing* **31**, 367–379 (2016).
42. Yohannes, A. M., Willgoss, T. G., Baldwin, R. C. & Connolly, M. J. Depression and anxiety in chronic heart failure and chronic obstructive pulmonary disease: prevalence, relevance, clinical implications and management principles. *International Journal of Geriatric Psychiatry* **25**, 1209–1221 (2010).

43. Parmar, K. R., Xiu, P. Y., Chowdhury, M. R., Patel, E. & Cohen, M. In-hospital treatment and outcomes of heart failure in specialist and non-specialist services: a retrospective cohort study in the elderly. *Open Heart* **2**, e000095 (2015).
44. Silverman, J. & Kinnersley, P. Calling time on the 10-minute consultation. *Br J Gen Pract* **62**, 118–119 (2012).
45. Turner, G. M., Litchfield, I., Finnikin, S., Aiyegbusi, O. L. & Calvert, M. General practitioners' views on use of patient reported outcome measures in primary care: a cross-sectional survey and qualitative study. *BMC Family Practice* **21**, 14 (2020).
46. Lam, C. S. P. *et al.* Identification of urgent gaps in public and policymaker knowledge of heart failure: Results of a global survey. *BMC Public Health* **23**, 1023 (2023).
47. World Heart Federation. *Accelerate Change Together: Heart Failure Gap Review*. (2020).
48. Vijayakrishnan, R. *et al.* Prevalence of heart failure signs and symptoms in a large primary care population identified through the use of text and data mining of the electronic health record. *J Card Fail* **20**, 459–464 (2014).

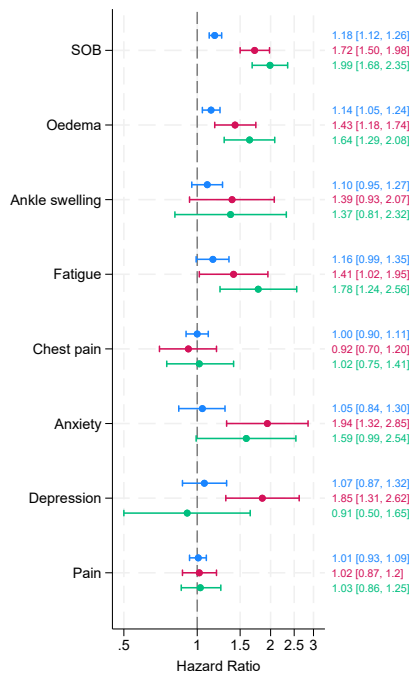
Symptom associations across three landmark points over 3 months

All-cause hospitalisation



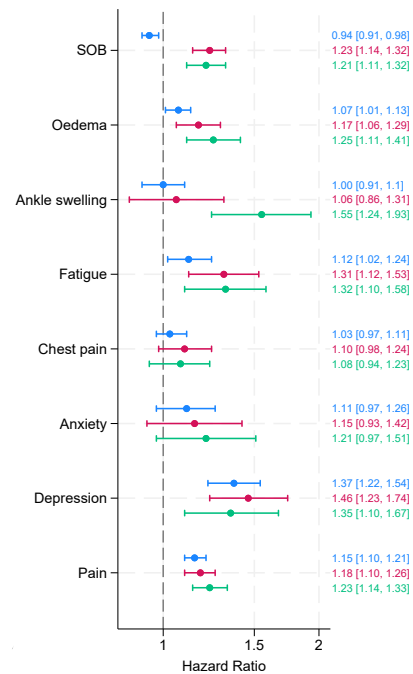
● Baseline ● 6 month landmark
● 12 month landmark

HF hospitalisation



● Baseline ● 6 month landmark
● 12 month landmark

Non-CVD hospitalisation



● Baseline ● 6 month landmark
● 12 month landmark

