

1 Long-term exposure to wildland fire smoke PM<sub>2.5</sub> and mortality in the  
2 contiguous United States

3 Yiqun Ma<sup>1,2</sup>, Emma Zang<sup>3</sup>, Yang Liu<sup>4</sup>, Jing Wei<sup>5</sup>, Yuan Lu<sup>6,7</sup>, Harlan M. Krumholz<sup>6,7</sup>, Michelle L.  
4 Bell<sup>8</sup>, Kai Chen<sup>1,2,\*</sup>

5 <sup>1</sup>Department of Environmental Health Sciences, Yale School of Public Health, New Haven, CT,  
6 USA

7 <sup>2</sup>Yale Center on Climate Change and Health, Yale School of Public Health, New Haven, CT, USA

8 <sup>3</sup>Department of Sociology, Yale University, New Haven, CT, USA

9 <sup>4</sup>Department of Environmental Health, Rollins School of Public Health, Emory University, Atlanta,  
10 GA, USA

11 <sup>5</sup>Department of Atmospheric and Oceanic Science, Earth System Science Interdisciplinary  
12 Center, University of Maryland, College Park, MD, USA

13 <sup>6</sup>Center for Outcomes Research and Evaluation, Yale New Haven Hospital, New Haven, CT,  
14 USA

15 <sup>7</sup>Section of Cardiovascular Medicine, Department of Medicine, Yale School of Medicine, New  
16 Haven, CT, USA

17 <sup>8</sup>School of the Environment, Yale University, New Haven, CT, USA

18

19 \*Corresponding author: Kai Chen

20 **Email:** [kai.chen@yale.edu](mailto:kai.chen@yale.edu)

21

22 **Author Contributions:** Y.M. conducted formal analyses and drafted the manuscript. K.C.  
23 conceived of and supervised the conduct of this study and edited the manuscript. K.C. and E.Z.  
24 applied and managed the mortality dataset. J.W. modelled the all-source PM<sub>2.5</sub> data and revised  
25 the manuscript. E.Z., Y.L., Y.L., H.M.K., and M.L.B. contributed to the interpretation of results and  
26 manuscript revision. All authors reviewed and approved the final version of this manuscript.

27 **Competing Interest Statement:** The authors declare no conflict of interests.

28 **Classification:** Biological Sciences, Environmental Sciences

29 **Keywords:** wildland fire, wildfire, mortality, fine particulate matter, United States

30

31 **Abstract**

32 Despite the substantial evidence on the health effects of short-term exposure to ambient fine  
33 particles (PM<sub>2.5</sub>), including increasing studies focusing on those from wildland fire smoke, the  
34 impacts of long-term wildland fire smoke PM<sub>2.5</sub> exposure remain unclear. We investigated the  
35 association between long-term exposure to wildland fire smoke PM<sub>2.5</sub> and non-accidental  
36 mortality and mortality from a wide range of specific causes in all 3,108 counties in the contiguous  
37 U.S., 2007–2020. Controlling for non-smoke PM<sub>2.5</sub>, air temperature, and unmeasured spatial and  
38 temporal confounders, we found a non-linear association between 12-month moving average  
39 concentration of smoke PM<sub>2.5</sub> and monthly non-accidental mortality rate. Relative to a month with  
40 the long-term smoke PM<sub>2.5</sub> exposure below 0.1 µg/m<sup>3</sup>, non-accidental mortality increased by  
41 0.16-0.63 and 2.11 deaths per 100,000 people per month when the 12-month moving average of  
42 PM<sub>2.5</sub> concentration was of 0.1-5 and 5+ µg/m<sup>3</sup>, respectively. Cardiovascular, ischemic heart  
43 disease, digestive, endocrine, diabetes, mental, and chronic kidney disease mortality were all  
44 found to be associated with long-term wildland fire smoke PM<sub>2.5</sub> exposure. Smoke PM<sub>2.5</sub>  
45 contributed to approximately 11,415 non-accidental deaths/year (95% CI: 6,754, 16,075) in the  
46 contiguous U.S. Higher smoke PM<sub>2.5</sub>-related increases in mortality rates were found for people  
47 aged 65 above. Positive interaction effects with extreme heat (monthly number of days with daily  
48 mean air temperature higher than the county's 90<sup>th</sup> percentile warm season air temperature) were  
49 also observed. Our study identified the detrimental effects of long-term exposure to wildland fire  
50 smoke PM<sub>2.5</sub> on a wide range of mortality outcomes, underscoring the need for public health  
51 actions and communications that span the health risks of both short- and long-term exposure.

## 52 **Significance Statement**

53 The area burned by wildland fire has greatly increased in the U.S. in recent decades. Short-term  
54 exposure to smoke pollutants emitted by wildland fires, particularly PM<sub>2.5</sub>, is associated with  
55 numerous adverse health effects. However, the impacts of long-term exposure to wildland fire  
56 smoke PM<sub>2.5</sub> on health and specifically mortality remain unclear. Utilizing wildland fire smoke  
57 PM<sub>2.5</sub> and mortality data in the contiguous U.S. during 2007-2020, we found positive associations  
58 between long-term smoke PM<sub>2.5</sub> exposure and increased non-accidental, cardiovascular,  
59 ischemic heart disease, digestive, endocrine, diabetes, mental, and chronic kidney disease  
60 mortality rates. Each year, in addition to the well-recognized mortality burden from non-smoke  
61 PM<sub>2.5</sub>, smoke PM<sub>2.5</sub> contributed to an estimated over 10 thousand non-accidental deaths in the  
62 U.S. This study demonstrates the detrimental effects of wildland fire smoke PM<sub>2.5</sub> on a wide  
63 range of health outcomes, and calls for more effective public health actions and communications  
64 that span the health risks of both short- and long-term exposure.

65 **Main Text**

66 **Introduction**

67 Wildland fire is a growing public health concern in the United States. As a result of the warming  
68 climate (1), a long history of fire suppression (2), and an increase in human-caused fire ignitions  
69 (3), the country has witnessed a marked increase in the area affected by wildland fires over the  
70 past few decades, with the burned area roughly quadrupling (4). In recent years, wildland fire  
71 contributed to up to 25% of total fine particulate matter (PM<sub>2.5</sub>) concentrations across the U.S.,  
72 and up to half in some Western regions (4). Under climate change, the prevalence, frequency,  
73 and intensity of wildland fire activities are expected to increase in the future (5).

74 Wildland fire smoke is a complex mixture. Among the various air pollutants emitted by  
75 wildland fires, PM<sub>2.5</sub> is widely used as an indicator of exposure because it is a major component  
76 of smoke, can deeply penetrate the respiratory system, and has demonstrated links to public  
77 health (6). Previous studies on the health effects of wildland fire smoke mostly focused on the  
78 western U.S., where the majority of large fires occurred (7-9). However, the pollutants from  
79 wildland fire smoke can travel long distances from the source, potentially affecting human health  
80 thousands of kilometers away outside the West (10).

81 Previous studies on the health effects of wildland fire exposure predominantly focused on  
82 the effects of short-term exposure, typically examining exposure periods within one or two weeks.  
83 Most studies reported a positive relationship between short-term wildland fire smoke exposure  
84 and all-cause mortality (9, 11-13). A growing number of studies linked short-term exposure to  
85 wildland fire smoke to increased risks of respiratory mortality and presented mixed evidence  
86 regarding cardiovascular mortality (11-14). Recent studies have also documented worsened  
87 diabetic outcomes (15), higher mortality rates among patients with kidney failure (16), and  
88 impaired mental health (17, 18) associated with short-term wildland fire smoke exposure.

89 However, given that climate change has contributed to an increase in wildland fire  
90 season length, increasing the duration of exposure, the health impacts of long-term wildland fire  
91 smoke exposure should be a concern of growing importance (19-21). To date, little is known

92 about the impacts of long-term exposure to wildland fire smoke on human health (19, 21). Most  
93 previous studies focused on mental health, reporting associations between long-term wildland fire  
94 exposure and mental outcomes, such as anger problems (22), posttraumatic stress disorder (23),  
95 depression (24), and anxiety (25). However, these studies could not distinguish between the  
96 effects of smoke and the overall impacts of wildland fires. A few studies suggested that exposure  
97 to wildland fires was associated with child mortality, COVID-19 mortality, cardiovascular disease  
98 mortality, and respiratory disease morbidity (21), but most of them did not measure the  
99 uncertainties of estimates. Given that short-term exposure to wildland fire smoke has been linked  
100 to a wide range of mortality outcomes, exploring whether long-term wildland fire smoke exposure  
101 is associated with these health effects is worthwhile.

102 Furthermore, the effects of wildland fire smoke  $PM_{2.5}$  can be heterogeneous among  
103 population subgroups due to physiological, behavioral, and socioeconomic factors (26). Previous  
104 studies indicated that demographic factors such as sex, age, and race and ethnicity may modify  
105 the association between smoke  $PM_{2.5}$  and health outcomes (11, 26, 27). However, existing  
106 research mostly focused on the effects of short-term wildland fire smoke exposure and generated  
107 mixed findings (9). To better prepare communities for smoke and tackle environmental justice  
108 issues, a deeper understanding of susceptibility to wildland fire exposure, particularly long-term  
109 exposure, among specific subgroups is needed to help inform targeted public health outreach  
110 efforts.

111 In the context of climate change, the co-occurrence of wildland fires and extreme heat  
112 events is expected to increase (28). In addition, both extreme heat and  $PM_{2.5}$  were associated  
113 with impaired cardiopulmonary functions (29, 30). Therefore, extreme heat may interact with  
114 wildland fire smoke and further aggravate health effects. A previous study suggested synergistic  
115 effects between short-term extreme heat and wildland fire smoke exposures on daily  
116 cardiorespiratory hospitalizations in California (31). However, little is known about the potential  
117 interaction between extreme heat and long-term smoke  $PM_{2.5}$  exposure nationwide.

118 Constrained by a lack of nationwide validated data on pollutant concentrations

119 attributable to wildland fire smoke, many previous studies on the impact of wildland fire smoke on  
120 health outcomes have been focusing on episodes with high wildland fire smoke exposure (or  
121 smoke wave) using binary measures of smoke concentrations (32). Recently, a machine learning  
122 model was developed to estimate wildland fire smoke PM<sub>2.5</sub> concentrations for the contiguous  
123 U.S., using a combination of meteorological factors, fire variables, aerosol measurements, and  
124 land use and elevation data (33). This new, high-resolution wildland fire smoke PM<sub>2.5</sub> dataset  
125 (10×10 km<sup>2</sup>) enabled us to further examine the impact of wildland fire smoke, ranging from the  
126 more common, low-level smoke concentrations to the increasingly frequent extremely high  
127 concentrations, and to explore its potentially non-linear effects on mortality.

128 Utilizing the nationwide monthly wildland fire smoke PM<sub>2.5</sub> and mortality data from 2007 to  
129 2020, this study aimed to (a) estimate the potentially non-linear associations of long-term smoke  
130 PM<sub>2.5</sub> exposure with county-level monthly non-accidental and cause-specific mortality from a  
131 broad spectrum of diseases, (b) calculate the attributable cause-specific mortality burden in each  
132 county, (c) examine the associations in different sex, age, and racial and ethnic groups, and (d)  
133 explore the interaction effect between smoke PM<sub>2.5</sub> and extreme heat on mortality.

134 **Results**

135 ***Description of smoke PM<sub>2.5</sub> exposure and monthly mortality in the contiguous U.S.***

136 For months from January 2007 to December 2020, we calculated the moving average of  
137 smoke PM<sub>2.5</sub> concentration of the current and previous 11 months for each county to represent  
138 the average exposure to smoke PM<sub>2.5</sub> in the previous year. The average 12-month moving  
139 average concentration of smoke PM<sub>2.5</sub> across all county-months during the study period was 0.4  
140 µg/m<sup>3</sup>, contributing to approximately 5% of all-source PM<sub>2.5</sub> (**Table S1**).

141 From 2007 to 2020, all 3,108 counties in the contiguous U.S. experienced some amount  
142 of smoke PM<sub>2.5</sub>, with the western, north central, and southeastern counties being exposed to  
143 higher long-term exposure (12-month moving average concentration of smoke PM<sub>2.5</sub>) than other  
144 regions (**Fig. 1A**). The temporal variability in this exposure was also higher in these regions  
145 compared with other regions (**Fig. 1B**). The overall temporal trend of the 12-month moving  
146 average concentration of smoke PM<sub>2.5</sub> for all U.S. contiguous counties is displayed in **Fig. S1**.

147 To account for the potentially non-linear health effects of smoke PM<sub>2.5</sub>, we categorized  
148 the 12-month moving average of smoke PM<sub>2.5</sub> concentrations into 9 bins: 0-0.1 (reference), 0.1-  
149 0.2, 0.2-0.3, 0.3-0.4, 0.4-0.5, 0.5-0.7, 0.7-1, 1-5 and 5+ µg/m<sup>3</sup>, corresponding to approximately  
150 9.9%, 17.8%, 17.7%, 14.4%, 11.1%, 14.9%, 9.1%, 5.0%, and 0.1% of county-months in the study  
151 period (**Fig. S2**). Only 15 county-months were not exposed to any smoke PM<sub>2.5</sub> in the current and  
152 previous 11 months.

153 A total of 33,902,722 non-accidental deaths were included in this study, including  
154 11,514,374 deaths from cardiovascular diseases, 3,584,654 from respiratory diseases, 1,624,915  
155 from endocrine diseases, 939,531 from genitourinary diseases, 2,465,890 from nervous  
156 diseases, 1,823,243 from mental and behavioral disorders (hereafter referred to as “mental  
157 disorders”), and 1,406,184 from digestive diseases. From 2007 to 2020, the mean age-adjusted  
158 non-accidental mortality rate was 61.9 (SD: 23.9) deaths per 100,000 people per month in all  
159 counties in the contiguous U.S. The descriptive statistics of age-adjusted mortality rate for each  
160 population subgroup and each specific cause are listed in **Table S1**.

161

162 ***Association between long-term smoke PM<sub>2.5</sub> exposure and cause-specific mortality rate***

163 Using a panel fixed effects model to control for air temperature, non-smoke PM<sub>2.5</sub>, time-  
164 invariant spatial confounders, county-invariant temporal confounders, and regional long-term and  
165 seasonal trends, we found a non-linear association between 12-month moving average of smoke  
166 PM<sub>2.5</sub> concentration and monthly non-accidental mortality rate (**Fig. 2**). Compared to a month in  
167 the same county with the long-term smoke PM<sub>2.5</sub> exposure below 0.1 µg/m<sup>3</sup>, non-accidental  
168 mortality increased by 0.16 (95% confidence interval [CI]: 0.06, 0.26), 0.40 (95% CI: 0.26, 0.54),  
169 0.35 (95% CI: 0.21, 0.49), 0.34 (95% CI: 0.19, 0.50), 0.49 (95% CI: 0.33, 0.65), 0.63 (95% CI:  
170 0.44, 0.83), 0.36 (95% CI: 0.11, 0.61), and 2.11 (95% CI: 1.24, 2.99) deaths per 100,000 people  
171 per month when the 12-month moving average of smoke PM<sub>2.5</sub> concentration was in the range of  
172 0.1-0.2, 0.2-0.3, 0.3-0.4, 0.4-0.5, 0.5-0.7, 0.7-1, 1-5 and 5+ µg/m<sup>3</sup>, respectively (**Fig. 2**).

173 We also observed positive associations between 12-month moving average of smoke  
174 PM<sub>2.5</sub> concentrations and monthly mortality rates from cardiovascular diseases, ischemic heart  
175 diseases, digestive diseases, endocrine diseases, diabetes, mental disorders, and chronic kidney  
176 diseases (**Fig. 2**). Compared to a month with the long-term smoke PM<sub>2.5</sub> exposure below 0.1  
177 µg/m<sup>3</sup>, cardiovascular mortality rates increased when the 12-month moving average of smoke  
178 PM<sub>2.5</sub> concentration was from 0.5 to 1 µg/m<sup>3</sup> and above 5 µg/m<sup>3</sup>, and ischemic heart disease  
179 mortality rates increased when the concentration was from 0.1 to 5 µg/m<sup>3</sup>. A nearly linear  
180 association was observed for mortality rates from endocrine diseases, including diabetes: the  
181 central estimates were generally higher as the concentration bin increased. Digestive mortality  
182 was found sensitive to the 12-month moving average of smoke PM<sub>2.5</sub> when the concentration was  
183 0.5-0.7 and 5+ µg/m<sup>3</sup>. Mortality from mental disorders (such as dementia, schizophrenia, and  
184 post-traumatic stress disorder) increased in all concentration bins compared to a month with the  
185 12-month moving average concentration below 0.1 µg/m<sup>3</sup>. In addition, mortality from chronic  
186 kidney diseases was found sensitive to long-term smoke PM<sub>2.5</sub> exposure when the 12-month  
187 moving average concentration was 0.3-0.4 and 0.5-1 µg/m<sup>3</sup>.



188 We also examined the associations between 12-month moving average of smoke  $PM_{2.5}$   
189 concentrations and monthly mortality rates from other specific causes, including stroke,  
190 myocardial infarction, hypertensive diseases, hypertensive heart diseases, respiratory diseases,  
191 chronic obstructive pulmonary disease (COPD), nervous diseases, Alzheimer's disease and  
192 related dementias (ADRD), and genitourinary diseases (**Fig. S3**). Although some of them were  
193 also found to be sensitive to long-term smoke  $PM_{2.5}$  exposure, such as mortality from stroke,  
194 myocardial infarction, respiratory diseases, and ADRD, these specific causes were not presented  
195 in the main figures or included in further analysis because their estimates were either insignificant  
196 after the Bonferroni correction for multiple comparisons, or inconsistent in direction across smoke  
197  $PM_{2.5}$  concentration bins. Negative effect estimates were found for hypertensive heart disease,  
198 COPD, and nervous disease mortality in some concentration bins, but none of them remain  
199 statistically significant after Bonferroni correction. The detailed estimates for all examined specific  
200 causes are listed in **Table S2**.

201

### 202 ***Cause-specific mortality burden attributable to long-term smoke $PM_{2.5}$ exposure***

203 Assuming the homogeneity within each smoke  $PM_{2.5}$  bin and the causality of the  
204 estimated smoke  $PM_{2.5}$ -mortality relationships, we further quantified the mortality burden  
205 attributable to long-term smoke  $PM_{2.5}$  exposure. As non-smoke  $PM_{2.5}$  was adjusted for in the  
206 model, the estimated smoke  $PM_{2.5}$ -attributable mortality burden is in addition to the well-  
207 recognized burden from non-smoke  $PM_{2.5}$ . On average, approximately 11,415 non-accidental  
208 deaths (95% CI: 6,754, 16,075) were attributable to smoke  $PM_{2.5}$  in the contiguous U.S. per year.  
209 The spatial distribution of this attributable burden was generally consistent with the distribution of  
210 smoke  $PM_{2.5}$  concentration (**Fig. 3A**). The estimated attributable non-accidental mortality burden  
211 for each year is displayed in **Fig. S4**.

212 For mortality from other specific causes, each year, long-term smoke  $PM_{2.5}$  exposure  
213 contributed approximately 4,512 deaths (95% CI: 1,922, 7,102) from cardiovascular diseases,  
214 including 3,753 (95% CI: 1,915, 5,592) ischemic heart disease deaths, 1,142 deaths (95% CI:

215 285, 1,999) from endocrine diseases, including 858 (95% CI: 149, 1,566) diabetes deaths, 2,083  
216 deaths (95% CI: 1,143, 3,022) from mental disorders, 537 deaths from digestive diseases (95%  
217 CI: -200, 1,273), and 320 deaths (95% CI: -72, 713) from chronic kidney diseases. Among the  
218 total long-term smoke PM<sub>2.5</sub>-attributable non-accidental deaths, approximately 72.5% were from  
219 cardiovascular diseases, mental disorders, endocrine diseases, and digestive diseases (**Fig. 3B**;  
220 **Table S3**).

221

### 222 ***Association between long-term smoke PM<sub>2.5</sub> and monthly mortality rate by subgroup***

223 We examined the association between 12-month moving average of smoke PM<sub>2.5</sub>  
224 concentrations and monthly non-accidental mortality rates across different sex, age, and race and  
225 ethnicity groups (**Table 1**). No significant difference in effect estimates was observed between  
226 males and females. Compared with people aged 0 to 64, greater increases in mortality rates were  
227 observed among people who aged above 65 across all smoke PM<sub>2.5</sub> concentration bins. Among  
228 different racial and ethnic groups, compared with non-Hispanic White people, significantly higher  
229 associations were observed for non-Hispanic Black and Hispanic people when smoke PM<sub>2.5</sub>  
230 concentration was from 1 to 5 µg/m<sup>3</sup>. After considering multiple comparisons, the difference  
231 between racial and ethnic minorities and non-Hispanic White people became insignificant, but the  
232 significant differences between age groups remained.

233 Subgroup analyses were also performed for major categories of mortality that showed  
234 consistent and significant sensitivity to long-term exposure to smoke PM<sub>2.5</sub>: cardiovascular,  
235 endocrine, digestive, and mental mortality (**Table S4**). In general, no significant difference  
236 between sex or race and ethnicity groups was detected for these four outcomes after considering  
237 multiple comparisons. Consistent with the findings for non-accidental mortality, greater smoke  
238 PM<sub>2.5</sub>-related increases in mortality rates from cardiovascular diseases and mental disorders  
239 were observed among people who aged above 65.

240

### 241 ***Interaction between long-term smoke PM<sub>2.5</sub> and extreme heat days***

242 Extreme heat commonly co-occurred with wildland fire smoke PM<sub>2.5</sub> in the contiguous  
243 U.S. Here, we examined the interaction effects of long-term smoke PM<sub>2.5</sub> and current-month  
244 extreme heat days. For each county, we defined extreme heat days as days with daily mean air  
245 temperature higher than the county's 90<sup>th</sup> percentile warm season air temperature (May to  
246 September, 2007-2020). From 2007 to 2020, a total of 657,402 extreme heat days were identified  
247 in the counties studied, spanning 126,237 county-months. We calculated the number of extreme  
248 heat days in each county for each month to represent monthly extreme heat exposure. Based on  
249 the spatial distribution of the 12-month moving average of smoke PM<sub>2.5</sub> concentrations and the  
250 current-month number of extreme heat days (**Fig. 4A**), the North Central, South, Southeast, and  
251 West regions experienced higher co-exposure to smoke PM<sub>2.5</sub> and extreme heat than other  
252 regions.

253 By including an interaction term for the current-month number of extreme heat days and  
254 12-month moving average of smoke PM<sub>2.5</sub> concentration bins in our model, we found a  
255 significantly positive interaction between extreme heat and smoke PM<sub>2.5</sub> at levels ranging from  
256 0.1 to 5 µg/m<sup>3</sup> (**Fig. 4B**). The interaction results in general remained robust when we used  
257 alternative temperature thresholds in the definition of extreme heat days (85<sup>th</sup> or 95<sup>th</sup> percentile of  
258 local warm-season temperature distribution). Among mortality of specific causes, positive  
259 interactions were found for cardiovascular and mental disorder mortality (**Fig. S5**).

260

### 261 ***Sensitivity analyses, placebo tests, and stratification by distance to fire***

262 Our results generally remained robust when we included different combinations of fixed  
263 effects, additionally adjusted for dew point temperature, did not adjust for non-smoke PM<sub>2.5</sub> or  
264 current-month air temperature, adjust for 12-month moving average of air temperature instead of  
265 current-month temperature, or used alternative degrees of freedoms in the natural cubic spline of  
266 air temperature in the model (**Fig. S6**). The estimated non-linear pattern also remained consistent  
267 when we used a quasi-Poisson model and used finer bins or a natural cubic spline for smoke  
268 PM<sub>2.5</sub> in the model (**Fig. S7-S9**). The results of the spatial and temporal randomization tests

269 indicated that the estimates in our study were unlikely driven by spatial or temporal dependence  
270 due to model misspecification (**Fig. S10**). When the exposure period to smoke PM<sub>2.5</sub> was  
271 extended from 12 months to 24 and 36 months, the model coefficients decreased and eventually  
272 becoming null at a 36-month exposure window in most bins (**Fig. S11**).

273 In a stratified analysis by distance to fire, we observed that the association between long-  
274 term smoke PM<sub>2.5</sub> exposure and non-accidental mortality were significantly higher in counties far  
275 away from the fire point ( $\geq 150$  km) in the current and past 11 months compared with those close  
276 to an active fire ( $< 150$  km) when the 12-month moving average of smoke PM<sub>2.5</sub> concentrations  
277 was from 0.2 to 0.4  $\mu\text{g}/\text{m}^3$  and from 1 to 5  $\mu\text{g}/\text{m}^3$  (**Fig. S12**). However, when the smoke PM<sub>2.5</sub>  
278 concentrations were above 5  $\mu\text{g}/\text{m}^3$ , the estimate was only significantly positive in counties close  
279 to fire. This result suggests that being close to a fire was unlikely to be a main driver of the  
280 estimated results in our study.

## 281 Discussion

282 To the best of our knowledge, this is the first study comprehensively examining the  
283 associations between long-term exposure to wildland fire smoke  $PM_{2.5}$  and mortality from a wide  
284 range of specific causes for all ages in the whole contiguous U.S. We found that average  
285 exposure to wildland fire smoke  $PM_{2.5}$  in the past one year was associated with increases in non-  
286 accidental, cardiovascular, ischemic heart disease, digestive, endocrine, diabetes, mental, and  
287 chronic kidney disease mortality. In addition to the well-documented mortality burden from non-  
288 smoke  $PM_{2.5}$ , in total, we estimated that smoke  $PM_{2.5}$  contributed to over 10,000 non-accidental  
289 deaths in the contiguous U.S. each year. Higher smoke  $PM_{2.5}$ -related increases in mortality rates  
290 were found for people aged 65 above. In addition, positive interaction effects between 12-month  
291 moving average of smoke  $PM_{2.5}$  concentrations and current-month number of extreme heat days  
292 on non-accidental, cardiovascular, and mental disorder mortality were observed.

293 The impacts of long-term wildland fire smoke exposures on mortality are understudied in  
294 existing literature. However, our results are in general consistent with a few previous findings that  
295 long-term exposure to wildland fire smoke is associated with increased premature mortality (21).  
296 For example, a study in Brazil observed a significant association between long-term exposure to  
297 forest fire  $PM_{2.5}$  (measured by percentage hours of  $PM_{2.5}$  concentrations  $> 25 \mu\text{g}/\text{m}^3$  divided by  
298 the total number of estimated hours of  $PM_{2.5}$  in 2005) and increases in cardiovascular disease  
299 mortality rates in older adults ( $\geq 65$  years) (34). Controlling for non-fire-sourced  $PM_{2.5}$ , a case-  
300 control study in low-income and middle-income countries reported that each  $1 \mu\text{g}/\text{m}^3$  increment of  
301 monthly mean fire-sourced  $PM_{2.5}$  concentration was associated with a 2.31% increased risk of  
302 child mortality, but this estimate became statistically insignificant after extending the exposure  
303 time window from 1 month to 12 months (35). However, given the differences in study population  
304 and location, exposures (e.g., the intensity, frequency, and duration of wildfire smoke), study  
305 design, and outcome measures, estimates are not directly comparable across studies. More  
306 studies investigating the long-term impacts of wildland fire smoke exposure on mortality from a  
307 comprehensive spectrum of specific causes and conditions are needed in the future.

308           Although the health impacts of wildland fire smoke PM<sub>2.5</sub> could be different from urban  
309 background PM<sub>2.5</sub> due to differences in chemical composition and particle size, and the episodic  
310 nature of smoke (7, 36), the biological mechanisms are likely to align with those documented for  
311 all-source (i.e., total mass) PM<sub>2.5</sub>. PM<sub>2.5</sub> can travel into the respiratory tract and bloodstream and  
312 trigger oxidative stress and inflammation, leading to impaired lung and vascular function (37).  
313 PM<sub>2.5</sub> may deposit in the kidney, contributing to the development of kidney diseases (38). PM<sub>2.5</sub>  
314 can also enter the gastrointestinal tract, causing imbalances in the intestinal microecology (39). In  
315 addition, PM<sub>2.5</sub> exposure has been associated with insulin resistance, which may progress to  
316 diabetes and other endocrine diseases (40). Furthermore, the oxidative stress, systemic and  
317 neuroinflammation, and hypothalamic-pituitary-adrenal axis dysregulation triggered by PM<sub>2.5</sub> have  
318 been linked to psychological diseases (41). The aggravation of physical health conditions could  
319 also worsen mental health (42). A multi-level conceptual framework has also been proposed for  
320 understanding the pathways connecting wildland fire smoke with mental health and well-being,  
321 which involves loss of nature, reduced access to livelihoods, reduced outdoor activities, and  
322 many other social and behavioral factors (17). More research is needed in the future to better  
323 understand the underlying mechanisms of the health impacts of wildland fire smoke.

324           In our study, higher effect estimates were found for older adults compared with people  
325 aged 0-64, which is consistent with the literature of all-source PM<sub>2.5</sub>. The greater increases in  
326 mortality rates associated with smoke PM<sub>2.5</sub> among older adults reflect both higher baseline  
327 mortality rates and higher susceptibility to air pollution in the older population as found in previous  
328 studies, due to decreased physiological, metabolic and compensatory processes, and a higher  
329 prevalence of comorbidities (43). In addition, we found higher effect estimates in counties far  
330 away from the fire point compared with those close to an active fire when the 12-month moving  
331 average of smoke PM<sub>2.5</sub> concentrations was below 5 µg/m<sup>3</sup>. This finding suggests a substantial  
332 public health burden from smoke, given that the population residing near the fires is likely much  
333 smaller compared to the larger number of people affected downwind due to smoke transport.

334 Furthermore, we observed a positive interaction effect between long-term exposure to  
335 wildland fire smoke  $PM_{2.5}$  and current-month extreme heat. To date, although research has  
336 highlighted the synergistic health impacts of heat and air pollution (44), only a limited number of  
337 studies have specifically examined the interaction with  $PM_{2.5}$  from wildland fire smoke. A recent  
338 study in California found evidence of synergistic effects between extreme heat and wildland fire  
339 smoke (31); however, since this study focused on short-term smoke  $PM_{2.5}$  exposure, its results  
340 are not directly comparable to those of our study. The positive interaction between wildland fire  
341 smoke  $PM_{2.5}$  and extreme heat indicates an increasing mortality burden for U.S. populations in  
342 the future given that the co-exposure to both hazards is expected to increase under the changing  
343 climate (28). Further studies on the compounding effects of wildland fires and other climate-  
344 related events, such as heatwaves and droughts, are warranted.

345 Our study estimated that over 10,000 non-accidental deaths per year resulted from  
346 wildland fire smoke  $PM_{2.5}$  in the contiguous U.S., which is over 1,000 times higher than the  
347 recorded wildfire deaths in the U.S. Billion-dollar Weather and Climate Disasters report by the  
348 National Oceanic and Atmospheric Administration's National Centers for Environmental  
349 Information (10 deaths/year due to the fire itself) (45). This indicates a great number of deaths  
350 brought by wildland fires that could not be captured by official tolls. According to the Global  
351 Burden of Disease Study, ambient particulate matter pollution contributed to an average of  
352 approximately 67,800 deaths annually in the contiguous U.S. from 2007 to 2020 (46, 47). Using  
353 this number as a reference, our results indicate that smoke  $PM_{2.5}$ -related deaths account for  
354 about 16.8% of the deaths associated with all-source  $PM_{2.5}$ . In addition, the U.S. Billion-dollar  
355 Weather and Climate Disasters report estimated that wildfire events cost about 3.1 billion dollars  
356 per year in the U.S. (45), but this estimate does not take into account the health care related  
357 losses or values associated with loss of life due to the fire itself or smoke (48). A recent study  
358 reported that the economic value of the health impacts of wildland fire smoke could be in the tens  
359 to hundreds of billions of U.S. dollars, but the exposure-response function for the  $PM_{2.5}$ -mortality  
360 relationship they used was for all-source  $PM_{2.5}$ , not wildland fire-specific  $PM_{2.5}$  (49). Our study

361 suggests a tremendous wildland fire smoke-related mortality burden, and our effect estimates for  
362 the relationship between wildland fire PM<sub>2.5</sub> and mortality could be applied in future estimates of  
363 the costs of wildland fires to more fully account for the fire and smoke impacts.

364 The findings of our study have several key implications. First, wildland fire smoke is a  
365 national concern in the U.S. Its health effects extend beyond the western regions where wildland  
366 fires mostly occur, impacting the entire country. Second, the health impacts of wildland fire smoke  
367 are not limited to those in response to short-term (daily) exposures. Long-term exposure to  
368 smoke PM<sub>2.5</sub> contributed to substantial mortality burden in the U.S. and will become increasingly  
369 important in the future due to the prolonged wildland fire seasons under climate change. Third,  
370 the health impacts of wildland fire smoke cover a wide spectrum of causes of death ranging from  
371 cardiovascular and endocrine diseases to mental disorders and digestive diseases. Furthermore,  
372 in addition to the well-recognized detrimental effects of extremely high concentrations of smoke  
373 PM<sub>2.5</sub>, even relatively low levels can be harmful. Finally, the relationship between wildland fire  
374 smoke and mortality appears to be non-linear, underscoring the necessity for further research into  
375 the modifying factors of this association and highlighting the importance of utilizing concentration-  
376 specific exposure-response functions in future health impact assessments.

377 Some limitations of this study should be noted. First, the wildland fire smoke PM<sub>2.5</sub>  
378 concentrations were modelled and subject to uncertainty. Because direct measurements of the  
379 smoke contribution to PM<sub>2.5</sub> pollution are not available, the smoke PM<sub>2.5</sub> prediction was based on  
380 PM<sub>2.5</sub> anomalies at monitoring stations, which may be an imprecise estimate of the  
381 concentrations of smoke (33). PM<sub>2.5</sub> from prescribed fire smoke is under-represented in the model  
382 output; therefore, the exposure data we used does not fully capture the total smoke exposure  
383 people experience from wildland fires (i.e., both wildfire and prescribed fire). Additionally, wildland  
384 fire smoke has a unique spatiotemporal pattern and measuring long-term smoke PM<sub>2.5</sub> exposure  
385 using average concentrations may overlook its episodic nature. Average smoke PM<sub>2.5</sub>  
386 concentrations primarily reflect intensity but do not adequately capture the frequency and duration  
387 aspects of long-term smoke PM<sub>2.5</sub> exposure (50). Future studies using different exposure metrics



388 that better reflect various aspects of long-term smoke PM<sub>2.5</sub> exposure are warranted.

389 Furthermore, we assumed that the non-smoke PM<sub>2.5</sub> was the difference between the all-source  
390 PM<sub>2.5</sub> and the smoke PM<sub>2.5</sub> concentrations, but they were generated using different methods and  
391 may introduce measurement errors.

392 Second, lacking detailed location information, this county-level ecological study is  
393 susceptible to ecological fallacy. We were unable to capture the within-county heterogeneity of  
394 smoke PM<sub>2.5</sub> exposure among different subgroups or analyze the influence of wildfire evacuation  
395 in this study. Besides, the estimates of smoke PM<sub>2.5</sub> in our study may partially capture the health  
396 effects of other pollutants within the smoke mixture. Due to the absence of publicly available, full-  
397 spatial coverage data updated to 2020, we were unable to adjust for other wildland fire-related air  
398 pollutants, such as nitrogen dioxide, ozone, carbon monoxide, and polycyclic aromatic  
399 hydrocarbons. In addition, we used the smoke PM<sub>2.5</sub> concentration range of 0-0.1 µg/m<sup>3</sup> as the  
400 reference due to the limited number of county-months with 0 µg/m<sup>3</sup> long-term exposure. This  
401 choice of reference could result in an underestimation of both the smoke PM<sub>2.5</sub>-related mortality  
402 changes and the attributable mortality burden. Furthermore, although we examined mortality from  
403 a wide range of plausible specific causes, we did not cover all possible causes of death (e.g.,  
404 infectious diseases and cancer were excluded). Future studies are warranted to explore the  
405 association between wildland fire smoke and these diseases. Finally, the calculation of  
406 attributable mortality burden was based on the assumptions of homogeneity and causality of the  
407 estimated smoke PM<sub>2.5</sub>-mortality relationships (see details in Methods). Violation of these  
408 assumptions may bias the results.

409 In conclusion, our study identified the detrimental effects of long-term wildland fire smoke  
410 PM<sub>2.5</sub> exposure on a wide range of mortality outcomes in the U.S. With wildland fire intensity and  
411 frequency anticipated to increase in the future driven by climate change (5), more effective public  
412 health actions and communications that span the health risks of short- and long-term exposure  
413 are urgently needed both in and outside the areas where the wildland fires occur.

## 414 **Materials and Methods**

### 415 ***Mortality and population data***

416 We obtained mortality data for all 3,108 counties or county equivalents in the contiguous  
417 U.S. from 2007 to 2020 from the National Center for Health Statistics. The mortality dataset  
418 includes the year and month of death, the primary cause of death (International Statistical  
419 Classification of Diseases and Related Health Problems, 10<sup>th</sup> Revision [ICD-10] codes), and the  
420 sex, age, race, and ethnicity of each deceased person. This study covered non-accidental  
421 mortality (ICD-10 code: A00-R99) and cause-specific mortality from major categories:  
422 cardiovascular diseases (I00-I99), respiratory diseases (J00-J99), endocrine diseases (E00-E90),  
423 genitourinary diseases (N00-N99), nervous diseases (G00-G99), mental and behavioral disorders  
424 (F00-F99), and digestive diseases (K00-K93). Deaths from more specific causes, including  
425 ischemic heart disease (I20-I25), myocardial infarction (I20-I23), stroke (I60-I69), hypertensive  
426 disease (I10-I15), hypertensive heart disease (I11), COPD (J41-J44), diabetes (E10-E14),  
427 chronic kidney disease (N18), and Alzheimer's disease and related dementias (F00-F03, G30)  
428 were also examined in this study.

429 County-level population data was collected from the Surveillance, Epidemiology, and End  
430 Results Program, National Cancer Institute (51). The total population and population estimate by  
431 sex, age, race, and Hispanic origin were extracted for each county, 2007–2020. We calculated  
432 the monthly county-level cause-specific mortality rates for different sex (male, female), age (0 to  
433 64, 65 and above), and race and ethnicity (non-Hispanic White, non-Hispanic Black, and  
434 Hispanic) groups. All mortality rates, except those specific to age groups, were age adjusted by  
435 direct standardization using the 2000 U.S. Census population as the standard population. Using  
436 anonymized monthly county-level mortality data, this study was determined as a Not Human  
437 Subject research by the Yale Institutional Review Boards (protocol ID: 2000026808).

438

### 439 ***Wildland fire smoke PM<sub>2.5</sub> and non-smoke PM<sub>2.5</sub>***

440 Ambient wildland fire smoke PM<sub>2.5</sub> estimates for the contiguous U.S. was provided by a

441 recent study by Childs et al. (33). In brief, smoke days were identified as days when smoke was  
442 overhead based on satellite imagery, and station-based ground smoke  $PM_{2.5}$  on those days was  
443 calculated as anomalies above the median on non-smoke days. Then, a model was trained to  
444 predict the station-based smoke  $PM_{2.5}$  using meteorological factors, fire variables, aerosol  
445 measurements, and land use and elevation data. Finally, the trained model was applied to  
446 produce daily estimates of smoke  $PM_{2.5}$  over the contiguous U.S. at a resolution of  $10 \times 10 \text{ km}^2$   
447 (33). This model performed well over the entire range of observed smoke  $PM_{2.5}$  ( $R^2 = 0.67$ ), but  
448 the model performance was lower on days with station-based smoke  $PM_{2.5}$  concentrations above  
449  $50 \mu\text{g}/\text{m}^3$  compared to days with concentrations below  $50 \mu\text{g}/\text{m}^3$  (33). We additionally validated  
450 this model against a recently published wildland fire-specific  $PM_{2.5}$  model in California, which  
451 applied a novel ensemble-based statistical approach to isolate wildland fire-specific  $PM_{2.5}$  from  
452 other sources of emissions (52). This external validation showed a great consistency between the  
453 monthly county-level predictions from these two models in California, 2006–2020, with an R-  
454 squared ( $R^2$ ) value of 0.92 and a root-mean-square error (RMSE) of  $1.14 \mu\text{g}/\text{m}^3$  (**Fig. S13**). The  
455 daily smoke  $PM_{2.5}$  concentrations were aggregated into monthly county-level average using  
456 population-weighted averaging to match with the mortality data. For months from January 2007 to  
457 December 2020, we calculated the 12-month moving average of smoke  $PM_{2.5}$  concentration for  
458 each county to represent the average exposure to smoke  $PM_{2.5}$  in the previous year. To account  
459 for the potentially non-linear effects, we divided the 12-month moving average smoke  $PM_{2.5}$   
460 concentrations into 9 bins: 0-0.1 (reference), 0.1-0.2, 0.2-0.3, 0.3-0.4, 0.4-0.5, 0.5-0.7, 0.7-1, 1-5  
461 and  $5+ \mu\text{g}/\text{m}^3$ . The distribution of samples across the bins is shown in **Fig. S2**.

462 Data of daily total all-source  $PM_{2.5}$  concentrations at  $1 \times 1 \text{ km}^2$  resolution were obtained  
463 from the USHighAirPollutants (USHAP) dataset (53). This daily surface  $PM_{2.5}$  concentration data  
464 was derived via a deep learning model that integrated big data from satellites, models, and  
465 surface observations (53). Similar to smoke  $PM_{2.5}$ , we averaged the daily all-source  $PM_{2.5}$   
466 concentrations into monthly county-level data. Non-smoke  $PM_{2.5}$  concentrations were then  
467 calculated by subtracting the smoke  $PM_{2.5}$  from the all-source  $PM_{2.5}$  concentrations. For negative

468 values produced by this subtraction (0.07% of the total observations), the non-smoke PM<sub>2.5</sub>  
469 concentrations were recoded as 0. We calculated the moving average non-smoke PM<sub>2.5</sub>  
470 concentrations of the current and previous 11 months for months from January 2007 to  
471 December 2020. The cartographic boundary for counties in the contiguous U.S. was downloaded  
472 from the U.S. Census Bureau's TIGER/Line geodatabase (54).

473

#### 474 ***Meteorological factors***

475 Daily mean air temperature and mean dew point temperature data at 4×4 km<sup>2</sup> were  
476 obtained from the PRISM Climate Group (55). Similar to the air pollution data, we generated  
477 monthly averages for these two variables for each county.

478 We also utilized the daily mean air temperature data from the PRISM Climate Group to  
479 detect extreme heat days (55). In each county, extreme heat was defined as days with daily  
480 mean air temperature higher than the county's 90<sup>th</sup> percentile warm season air temperature (May  
481 to September, 2007-2020). The monthly number of extreme heat days in each county were  
482 calculated. In sensitivity analysis, temperature thresholds of 85<sup>th</sup> and 95<sup>th</sup> percentiles were used  
483 as alternative definitions of extreme heat.

484

#### 485 ***Distance to fire***

486 Daily active fire location data from 2006 to 2020 were obtained from the Hazard Mapping  
487 System (HMS). This system combines near real-time satellite observations into a common  
488 framework in which trained satellite analysts perform quality control of automated fire detections  
489 (56). For each county, we calculated the distance from its population centroid to the nearest  
490 active fire point each day and aggregated the daily data to monthly level using the median value.  
491 Then, we calculated the 12-month moving average of this distance for each county to represent  
492 the average distance to active fires in the previous year. We classified the distance to fire into two  
493 categories: close (< 150 km) and far (≥ 150 km).

494

495 **Statistical analysis**

496 To estimate the association between long-term exposure to wildland fire smoke PM<sub>2.5</sub>  
497 and monthly mortality rates, we applied a panel fixed effects model which exploits local temporal  
498 variation in both exposure and outcome. Panel fixed effects models have been increasingly  
499 applied in environmental epidemiology in recent years (57, 58). In our study, the main model can  
500 be expressed as

$$\begin{aligned} 501 \quad & MortalityRate_{c,y,m} \\ 502 \quad & = \alpha_c + \theta_{y,m} + \delta_{s,y} + \eta_{c,m} \\ 503 \quad & + \sum_{b=1}^B (\beta_b SmokePM2.5Bins_{c,y,m}^b) + \beta NonSmokePM2.5_{c,y,m} \\ 504 \quad & + ns(Temperature_{c,y,m}, df = 5) + \varepsilon_{c,y,m} \end{aligned}$$

505 where  $MortalityRate_{c,y,m}$  represents the non-accidental or other cause-specific age-adjusted  
506 mortality rates in county  $c$ , year  $y$ , and month  $m$ .  $SmokePM2.5Bins_{c,y,m}^b$  is a dummy for whether  
507 the moving average of smoke PM<sub>2.5</sub> concentration of the current and previous 11 months in  
508 county  $c$ , year  $y$ , and month  $m$  falls into the concentration range of bin  $b$ .  $\alpha_c$  refers to time-  
509 invariant county effects and  $\theta_{y,m}$  refers to time-varying effects that are common in all counties. By  
510 introducing the indicators for each county and each year-month, this model can potentially control  
511 for all spatial confounders that only vary across counties (e.g., urbanicity) and all temporal  
512 confounders that only vary by time (e.g., seasonality), either measured or unmeasured (59).  
513 Fixed effects at the state by year level ( $\delta_{s,y}$ ) and at the county by month of year level ( $\eta_{c,m}$ )  
514 account for regional long-term trend and seasonality in exposure and outcomes.  
515  $NonSmokePM2.5_{c,y,m}$  is the 12-month moving average of non-smoke PM<sub>2.5</sub> concentrations in  
516 county  $c$ , year  $y$ , and month  $m$ . Current-month air temperature was controlled by a flexible natural  
517 cubic spline with five degrees of freedom (df).  $\varepsilon_{c,y,m}$  is the error term. We weighted models using  
518 the population size in each county to improve the precision of our estimates (60).  
519 Heteroskedasticity-robust standard-errors were used to compute 95% confidence intervals.  
520 Associations were considered statistically significant at  $\alpha$  of 0.05 with a Bonferroni correction

521 given as  $\alpha/m$ , where  $m$  is the number of examined specific causes of death (17 specific causes).  
522 Only specific causes with estimates consistent in direction across smoke PM<sub>2.5</sub> concentration bins  
523 and statistically significant after Bonferroni correction were included in further analysis.

524 In subgroup analyses, to estimate the association between long-term smoke PM<sub>2.5</sub>  
525 exposure and monthly mortality rates by sex, age, and race and ethnicity, we used an expanded  
526 dataset nesting the subgroups, interacted the subgroup variable with all terms in the model, and  
527 reported the statistical significance of the interaction term between the subgroup variable and  
528 smoke PM<sub>2.5</sub>. To account for multiple comparison, Bonferroni correction was also performed in  
529 subgroup analyses ( $m = 3 \text{ subgroups} \times 5 \text{ major causes of mortality}$ ). Furthermore, we  
530 explored the interaction between extreme heat and smoke PM<sub>2.5</sub> by interacting the current-month  
531 number of extreme heat days and bins of 12-month moving average concentration of smoke  
532 PM<sub>2.5</sub> in the model. In addition, we also conducted stratified analysis by distance to fire (close,  
533 far) to investigate its potential modification effect. We tested the lag pattern in the effects of  
534 smoke PM<sub>2.5</sub> by extending the 12-month moving average of smoke PM<sub>2.5</sub> concentration to 24 and  
535 36, representing longer-term smoke PM<sub>2.5</sub> in the past up to 3 years.

536 Based on the estimated coefficients of smoke PM<sub>2.5</sub> bins ( $\beta_b$ ) for each cause, which can  
537 be interpreted as the changes in mortality rate associated with being in those bins of smoke PM<sub>2.5</sub>  
538 concentration compared to the reference bin (0-0.1  $\mu\text{g}/\text{m}^3$ ), we calculated the number of deaths  
539 attributable to smoke PM<sub>2.5</sub> (attributable number, AN) in each county in each month by  $AN_{c,m} =$   
540  $\beta_b \times Population_{c,m}$ , where  $\beta_b$  is the estimated coefficient of the corresponding smoke PM<sub>2.5</sub> bin  
541 ( $b$ ) in that month and  $Population_{c,m}$  is the total population in county  $c$ , month  $m$ . This calculation  
542 relied on two key assumptions. First, this approach assumes homogeneity within each smoke  
543 PM<sub>2.5</sub> bin, disregarding the variation within the bin. In this study, the 12-month moving average  
544 concentrations of smoke PM<sub>2.5</sub> were divided into nine narrowly defined bins, each with a relatively  
545 small concentration range. Therefore, the estimate of each bin is likely to well represent the  
546 average effects of smoke PM<sub>2.5</sub> within that specific concentration range. This assumption was  
547 further tested by using finer bins and a non-linear curve to smoke PM<sub>2.5</sub> in sensitivity analyses

548 (see below; **Fig. S8-S9**). In addition, by using the regression coefficients to estimate attributable  
549 deaths, we assume a causal relationship between smoke PM<sub>2.5</sub> concentration and mortality rates.  
550 Traditionally, health impact assessments for long-term exposure use exposure-response  
551 functions estimated from cohort studies. However, to the best of our knowledge, no published  
552 cohort studies have reported the association between long-term wildland fire smoke PM<sub>2.5</sub>  
553 exposure and cause-specific mortality for the total population across the entire contiguous U.S.  
554 Similar to a previous study (61), we applied the estimates from a panel fixed effects model to the  
555 calculation of attributable mortality burden. Our statistical model accounted for unmeasured  
556 temporal and spatial confounders by the year-month and county fixed effects and unmeasured  
557 confounders that vary both over time and space by the space-time interaction terms. Therefore,  
558 the observed association is unlikely to be primarily driven by unmeasured confounding factors.  
559 Spatial and temporal randomization tests were performed to test this assumption (see below; **Fig.**  
560 **S10**). In addition, unlike cohort studies that commonly focus on people identified by specific  
561 characteristics (e.g., older adults), our study design allows us to cover the entire population  
562 across all age groups. This makes our estimates more suitable for health impact assessments of  
563 the general population.

564 Several sensitivity analyses were performed to test the robustness of our results: (a) we  
565 used different choices of fixed effects in the model; (b) we additionally adjusted for dew point  
566 temperature in the model; (c) we removed non-smoke PM<sub>2.5</sub> or current-month air temperature  
567 from the model; (d) an alternative four or six dfs was used in the natural cubic spline of air  
568 temperature; (e) we adjusted for 12-month moving average of air temperature instead of current-  
569 month air temperature; (f) we used mortality count as the outcome variable and performed a  
570 quasi-Poisson model; (g) we used finer bins of smoke PM<sub>2.5</sub> concentration; and (h) we used a  
571 natural cubic spline with knots at 0, 0.1, 0.3, 0.5, 1, and 5 µg/m<sup>3</sup> to model wildland fire smoke  
572 PM<sub>2.5</sub> concentration.

573 In addition, to assess the likelihood of model misspecification influencing our main  
574 results, we performed a spatial randomization test and a temporal randomization test. In the

575 spatial randomization test, we randomized the smoke  $PM_{2.5}$  exposure for 2,000 times across  
576 county while keeping their de facto year-month; in the temporal randomization test, we  
577 randomized the exposure variable for 2,000 times across year-month while keeping the  
578 corresponding counties. Such placebo tests are commonly used to detect spatial and temporal  
579 dependence due to model misspecification in panel models (62, 63).



580 **Acknowledgments**

581 Research reported in this publication was supported by the National Heart, Lung, And Blood  
582 Institute of the National Institutes of Health under Award Number R01HL169171. Dr. E. Zang  
583 received support from the National Institute on Aging (R21AG074238-01), the Research  
584 Education Core of the Claude D. Pepper Older Americans Independence Center at Yale School  
585 of Medicine (P30AG021342), and the Institution for Social and Policy Studies at Yale University.  
586 Y. Ma, Dr. K. Chen, and Dr. Y. Lu acknowledge support from the Yale Planetary Solutions seed  
587 grant. Dr. Y. Liu received support from the National Institute of Environmental Health Sciences  
588 (1R01ES034175). The content is solely the responsibility of the authors and does not necessarily  
589 represent the official views of the National Institutes of Health.

## 590 References

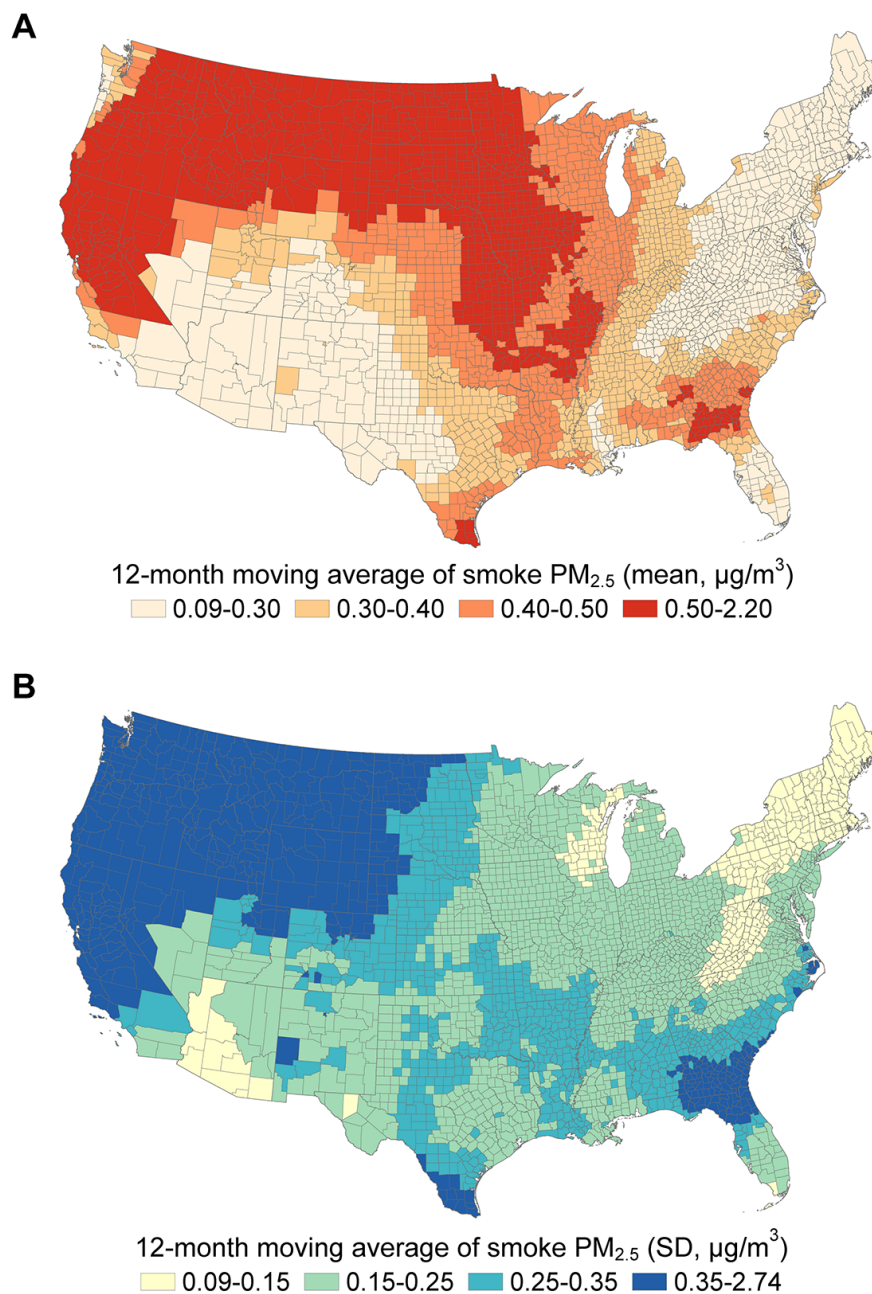
- 591 1. Abatzoglou JT & Williams AP, Impact of anthropogenic climate change on wildfire across  
592 western US forests. *Proc Natl Acad Sci U S A* 113(42):11770-11775 (2016).
- 593 2. Boisramé GF, Brown TJ, & Bachelet DM, Trends in western USA fire fuels using  
594 historical data and modeling. *Fire Ecol* 18(1):8 (2022).
- 595 3. Balch JK, *et al.*, Human-started wildfires expand the fire niche across the United States.  
596 *Proc Natl Acad Sci U S A* 114(11):2946-2951 (2017).
- 597 4. Burke M, *et al.*, The changing risk and burden of wildfire in the United States. *Proc Natl*  
598 *Acad Sci U S A* 118(2):e2011048118 (2021).
- 599 5. Spracklen DV, *et al.*, Impacts of climate change from 2000 to 2050 on wildfire activity and  
600 carbonaceous aerosol concentrations in the western United States. *J Geophys Res*  
601 *Atmos* 114(D20)2009).
- 602 6. Kim K-H, Kabir E, & Kabir S, A review on the human health impact of airborne particulate  
603 matter. *Environ Int* 74:136-143 (2015).
- 604 7. Liu JC, *et al.*, Wildfire-specific fine particulate matter and risk of hospital admissions in  
605 urban and rural counties. *Epidemiology* 28(1):77 (2017).
- 606 8. Heft-Neal S, Driscoll A, Yang W, Shaw G, & Burke M, Associations between wildfire  
607 smoke exposure during pregnancy and risk of preterm birth in California. *Environ Res*  
608 203:111872 (2022).
- 609 9. Reid CE, *et al.*, Critical review of health impacts of wildfire smoke exposure. *Environ*  
610 *Health Perspect* 124(9):1334-1343 (2016).
- 611 10. O'Dell K, *et al.*, Estimated mortality and morbidity attributable to smoke plumes in the  
612 United States: Not just a western US problem. *GeoHealth* 5(9):e2021GH000457 (2021).
- 613 11. Ye T, *et al.*, Short-term exposure to wildfire-related PM<sub>2.5</sub> increases mortality risks and  
614 burdens in Brazil. *Nat Commun* 13(1):1-9 (2022).
- 615 12. Chen G, *et al.*, Mortality risk attributable to wildfire-related PM<sub>2.5</sub> pollution: a global time  
616 series study in 749 locations. *Lancet Planet Health* 5(9):e579-e587 (2021).
- 617 13. Gould CF, *et al.*, Health effects of wildfire smoke exposure. *Annu Rev Med* 75(2023).
- 618 14. Chen H, Samet JM, Bromberg PA, & Tong H, Cardiovascular health impacts of wildfire  
619 smoke exposure. *Part Fibre Toxicol* 18(1):1-22 (2021).
- 620 15. Yao J, *et al.*, Sub-daily exposure to fine particulate matter and ambulance dispatches  
621 during wildfire seasons: a case-crossover study in British Columbia, Canada. *Environ*  
622 *Health Perspect* 128(6):067006 (2020).
- 623 16. Xi Y, *et al.*, Mortality in US hemodialysis patients following exposure to wildfire smoke. *J*  
624 *Am Soc Nephrol* 31(8):1824 (2020).
- 625 17. Eisenman DP & Galway LP, The mental health and well-being effects of wildfire smoke: a  
626 scoping review. *BMC Public Health* 22(1):1-17 (2022).
- 627 18. Molitor D, Mullins JT, & White C, Air pollution and suicide in rural and urban America:  
628 Evidence from wildfire smoke. *Proc Natl Acad Sci U S A* 120(38):e2221621120 (2023).
- 629 19. Grant E & Runkle JD, Long-term health effects of wildfire exposure: a scoping review. *J*  
630 *Clim Chang Health* 6:100110 (2022).
- 631 20. USGCRP (U.S. Global Change Research Program), Impacts, risks, and adaptation in the  
632 United States: Fourth National Climate Assessment, volume II. 2018).
- 633 21. Gao Y, *et al.*, Long-term impacts of non-occupational wildfire exposure on human health:  
634 A systematic review. *Environ Pollut*:121041 (2023).
- 635 22. Cowlshaw S, *et al.*, Anger dimensions and mental health following a disaster: Distribution  
636 and implications after a major bushfire. *J Trauma Stress* 34(1):46-55 (2021).
- 637 23. Bryant RA, *et al.*, The dynamic course of psychological outcomes following the Victorian  
638 Black Saturday bushfires. *Aust N Z J Psychiatry* 55(7):666-677 (2021).
- 639 24. Bryant RA, *et al.*, Psychological outcomes following the Victorian Black Saturday  
640 bushfires. *Aust N Z J Psychiatry* 48(7):634-643 (2014).

- 641 25. Brown MR, *et al.*, After the Fort McMurray wildfire there are significant increases in  
642 mental health symptoms in grade 7–12 students compared to controls. *BMC psychiatry*  
643 19:1-11 (2019).
- 644 26. Kondo MC, *et al.*, Meta-analysis of heterogeneity in the effects of wildfire smoke  
645 exposure on respiratory health in North America. *Int J Environ Res Public Health*  
646 16(6):960 (2019).
- 647 27. Liu JC, *et al.*, Who among the elderly is most vulnerable to exposure to and health risks  
648 of fine particulate matter from wildfire smoke? *Am J Epidemiol* 186(6):730-735 (2017).
- 649 28. Hanberry BB, Compounded heat and fire risk for future US populations. *Sustainability*  
650 12(8):3277 (2020).
- 651 29. Zafeiratou S, *et al.*, A systematic review on the association between total and  
652 cardiopulmonary mortality/morbidity or cardiovascular risk factors with long-term  
653 exposure to increased or decreased ambient temperature. *Sci Total Environ* 772:145383  
654 (2021).
- 655 30. De Marco A, Amoatey P, Khaniabadi YO, Sicard P, & Hopke PK, Mortality and morbidity  
656 for cardiopulmonary diseases attributed to PM<sub>2.5</sub> exposure in the metropolis of Rome,  
657 Italy. *Eur J Intern Med* 57:49-57 (2018).
- 658 31. Chen C, Schwarz L, Rosenthal N, Marlier ME, & Benmarhnia T, Exploring spatial  
659 heterogeneity in synergistic effects of compound climate hazards: Extreme heat and  
660 wildfire smoke on cardiorespiratory hospitalizations in California. *Sci Adv* 10(5):eadj7264  
661 (2024).
- 662 32. Liu JC, Pereira G, Uhl SA, Bravo MA, & Bell ML, A systematic review of the physical  
663 health impacts from non-occupational exposure to wildfire smoke. *Environ Res* 136:120-  
664 132 (2015).
- 665 33. Childs ML, *et al.*, Daily local-level estimates of ambient wildfire smoke PM<sub>2.5</sub> for the  
666 contiguous US. *Environ Sci Technol* 56(19):13607-13621 (2022).
- 667 34. Nunes KVR, Ignotti E, & Hacon SdS, Circulatory disease mortality rates in the elderly and  
668 exposure to PM<sub>2.5</sub> generated by biomass burning in the Brazilian Amazon in 2005.  
669 *Cadernos de saude publica* 29:589-598 (2013).
- 670 35. Xue T, *et al.*, Associations between exposure to landscape fire smoke and child mortality  
671 in low-income and middle-income countries: a matched case-control study. *Lancet Planet*  
672 *Health* 5(9):e588-e598 (2021).
- 673 36. Xu R, *et al.*, Wildfires, global climate change, and human health. *N Engl J Med*  
674 383(22):2173-2181 (2020).
- 675 37. Hadley MB, Henderson SB, Brauer M, & Vedanthan R, Protecting cardiovascular health  
676 from wildfire smoke. *Circulation* 146(10):788-801 (2022).
- 677 38. Shubham S, *et al.*, Role of air pollution in chronic kidney disease: an update on evidence,  
678 mechanisms and mitigation strategies. *Int Arch Occup Environ Health* 95(5):897-908  
679 (2022).
- 680 39. Mutlu EA, *et al.*, Inhalational exposure to particulate matter air pollution alters the  
681 composition of the gut microbiome. *Environ Pollut* 240:817-830 (2018).
- 682 40. Dang J, *et al.*, Associations of exposure to air pollution with insulin resistance: a  
683 systematic review and meta-analysis. *Int J Environ Res Public Health* 15(11):2593  
684 (2018).
- 685 41. Braithwaite I, Zhang S, Kirkbride JB, Osborn DPJ, & Hayes JF, Air Pollution (Particulate  
686 Matter) Exposure and Associations with Depression, Anxiety, Bipolar, Psychosis and  
687 Suicide Risk: A Systematic Review and Meta-Analysis. *Environ Health Perspect*  
688 127(12):126002 (2019).
- 689 42. Doherty AM & Gaughran F, The interface of physical and mental health. *Soc Psychiatry*  
690 *Psychiatr Epidemiol* 49:673-682 (2014).
- 691 43. Shumake KL, Sacks JD, Lee JS, & Johns DO, Susceptibility of older adults to health  
692 effects induced by ambient air pollutants regulated by the European Union and the United  
693 States. *Aging Clin Exp Res* 25:3-8 (2013).

- 694 44. Anenberg SC, Haines S, Wang E, Nassikas N, & Kinney PL, Synergistic health effects of  
695 air pollution, temperature, and pollen exposure: a systematic review of epidemiological  
696 evidence. *Environ Health* 19:1-19 (2020).
- 697 45. NOAA National Centers for Environmental Information (NCEI), U.S. Billion-Dollar  
698 Weather and Climate Disasters. (2023).
- 699 46. Brauer M, *et al.*, Global burden and strength of evidence for 88 risk factors in 204  
700 countries and 811 subnational locations, 1990–2021: a systematic analysis for the Global  
701 Burden of Disease Study 2021. *Lancet* 403(10440):2162-2203 (2024).
- 702 47. Murray CJ, Findings from the Global Burden of Disease Study 2021. *Lancet*  
703 403(10440):2259-2262 (2024).
- 704 48. Smith AB & Katz RW, US billion-dollar weather and climate disasters: data sources,  
705 trends, accuracy and biases. *Nat Hazards* 67(2):387-410 (2013).
- 706 49. Fann N, *et al.*, The health impacts and economic value of wildland fire episodes in the  
707 U.S.: 2008–2012. *Sci Total Environ* 610-611:802-809 (2018).
- 708 50. Casey JA, *et al.*, Measuring long-term exposure to wildfire PM2. 5 in California: Time-  
709 varying inequities in environmental burden. *Proc Natl Acad Sci U S A*  
710 121(8):e2306729121 (2024).
- 711 51. The SEER Program, U.S. County Population Data - 1969-2020. (2022).
- 712 52. Aguilera R, *et al.*, A novel ensemble-based statistical approach to estimate daily wildfire-  
713 specific PM2.5 in California (2006-2020). *Environ Int* 171:107719 (2023).
- 714 53. Wei J, *et al.*, Long-term mortality burden trends attributed to black carbon and PM2. 5  
715 from wildfire emissions across the continental USA from 2000 to 2020: a deep learning  
716 modelling study. *Lancet Planet Health* 7(12):e963-e975 (2023).
- 717 54. United States Census Bureau, Cartographic Boundary Files. (2019).
- 718 55. PRISM Climate Group, PRISM Climate Data Recent Years (Jan 1981 - Jan 2022). 2016).
- 719 56. Brey SJ, Ruminski M, Atwood SA, & Fischer EV, Connecting smoke plumes to sources  
720 using Hazard Mapping System (HMS) smoke and fire location data over North America.  
721 *Atmos Chem Phys* 18(3):1745-1761 (2018).
- 722 57. Wang Y, *et al.*, Estimating causal effects of long-term PM2.5 exposure on mortality in  
723 New Jersey. *Environ Health Perspect* 124(8):1182-1188 (2016).
- 724 58. Renzi M, *et al.*, Long-term PM10 exposure and cause-specific mortality in the Latium  
725 Region (Italy): a difference-in-differences approach. *Environ Health Perspect*  
726 127(6):067004 (2019).
- 727 59. Goodman-Bacon A, Difference-in-differences with variation in treatment timing. *J Econom*  
728 225(2):254-277 (2021).
- 729 60. Zang E & Kim N, Intergenerational upward mobility and racial differences in mortality  
730 among young adults: Evidence from county-level analyses. *Health Place* 70:102628  
731 (2021).
- 732 61. Heft-Neal S, Burney J, Bendavid E, & Burke M, Robust relationship between air quality  
733 and infant mortality in Africa. *Nature* 559(7713):254-258 (2018).
- 734 62. Lam PH, Zang E, Chen D, Liu R, & Chen K, Long-Term Exposure to Fine Particulate  
735 Matter and Academic Performance Among Children in North Carolina. *JAMA Netw Open*  
736 6(10):e2340928-e2340928 (2023).
- 737 63. Benschaul-Tolonen A, Local industrial shocks and infant mortality. *Econ J* 129(620):1561-  
738 1592 (2019).

739

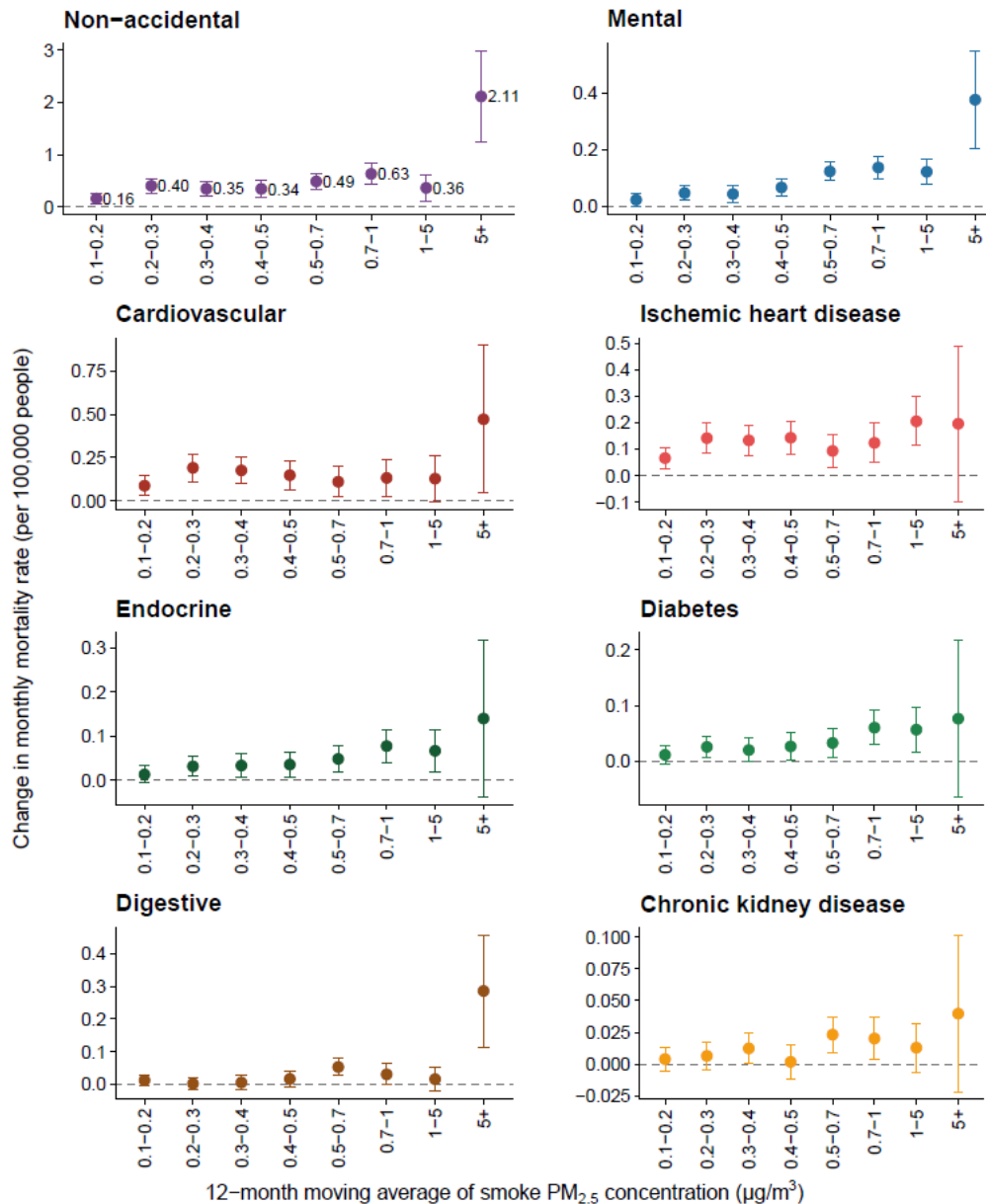
740 **Figures**  
741



742  
743  
744  
745  
746  
747  
748

**Fig. 1. Spatial distribution of 12-month moving average of smoke  $PM_{2.5}$  concentration in the contiguous U.S., 2007–2020. A:** The distribution of the mean 12-month moving average concentration of smoke  $PM_{2.5}$  in the contiguous U.S. counties ( $\mu g/m^3$ ). **B:** The distribution of the standard deviation (SD) of the 12-month moving average concentration of smoke  $PM_{2.5}$  in the contiguous U.S. counties ( $\mu g/m^3$ ).

749



750

751

752

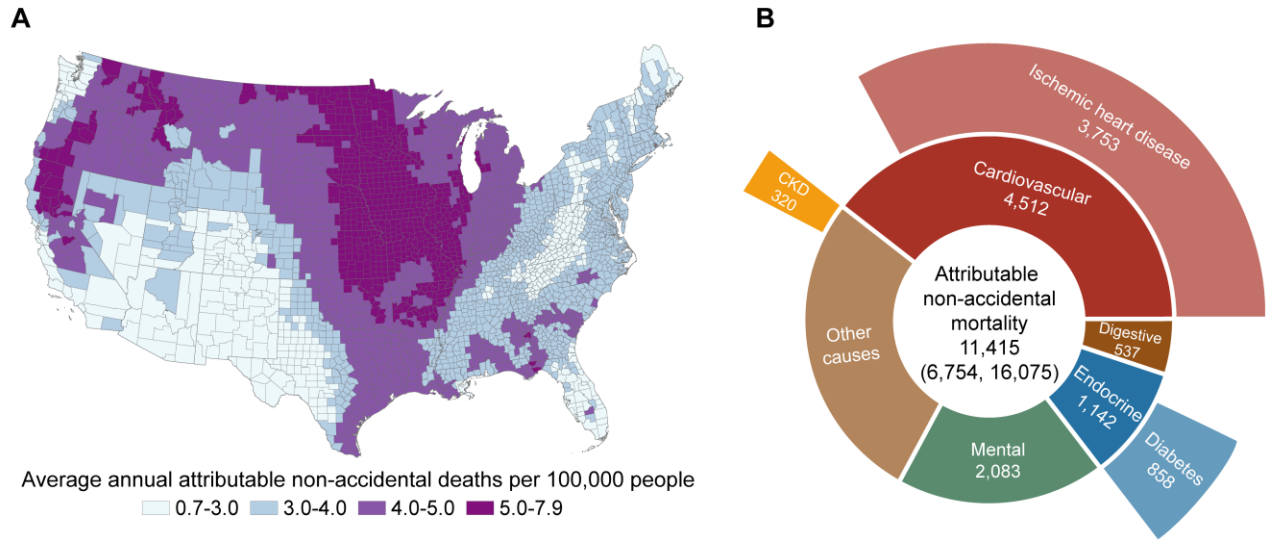
753

754

755

**Fig. 2. Association between 12-month moving average concentration of smoke PM<sub>2.5</sub> and monthly mortality rate.** This figure displays the estimated changes in monthly cause-specific mortality rate (per 100,000 people) associated with each bin of 12-month moving average of smoke PM<sub>2.5</sub> concentration, relative to a month in the same county with the long-term smoke PM<sub>2.5</sub> exposure below 0.1 µg/m<sup>3</sup>. The error bars indicate 95% confidence intervals.

756



757

758

759

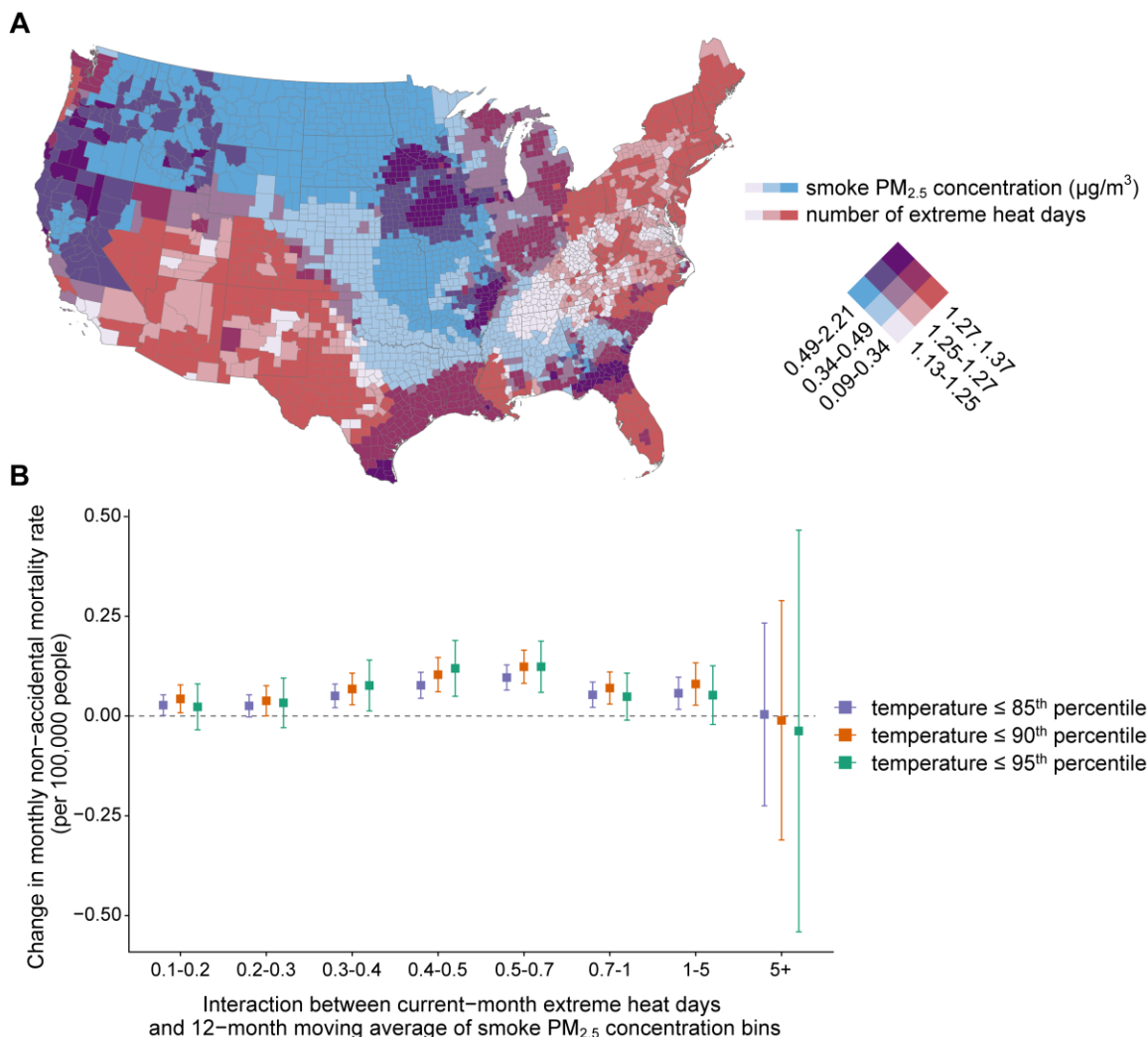
760

761

762

**Fig. 3. Average annual non-accidental mortality burden attributable to long-term smoke  $PM_{2.5}$  exposure. A:** The spatial distribution of average annual non-accidental deaths (per 100,000 people) attributable to long-term smoke  $PM_{2.5}$  exposure (12-month moving average). **B:** Estimated average annual cause-specific deaths attributable to long-term smoke  $PM_{2.5}$  exposure.

763



764

765

**Fig. 4. Interaction effects between extreme heat and smoke PM<sub>2.5</sub> on non-accidental**

766

mortality rate. **A:** This bivariate choropleth map shows the spatial distribution of the 12-month

767

moving average of smoke PM<sub>2.5</sub> concentrations and the average number of current-month

768

extreme heat days in each county, 2007-2020. Darker blue indicates higher average smoke PM<sub>2.5</sub>

769

concentrations; darker red indicates more average extreme heat days; and darker purple

770

indicates higher values of both variables. **B:** The interaction effects between the number of

771

current-month extreme heat days (a continuous variable) and 12-month moving average of

772

smoke PM<sub>2.5</sub> concentration bins (a categorical variable). The error bars indicate 95% confidence

773

intervals. Extreme heat days were defined as days with daily mean air temperature higher than

774

the county's 90<sup>th</sup> (main analysis), 85<sup>th</sup>, or 95<sup>th</sup> (sensitivity analyses) percentile warm season air

775

temperature (May to September, 2007-2020).

776



777 **Table 1. Associations between 12-month moving average of smoke PM<sub>2.5</sub> concentration**  
 778 **bins and monthly non-accidental mortality rate (per 100,000 people) in population**  
 779 **subgroups**

Subgroup	Smoke PM <sub>2.5</sub> concentration bin (µg/m <sup>3</sup> )	Associated change in monthly mortality rate (95% CI)	P value*
<b>By sex</b>			
Male	0.1-0.2	0.11 (-0.05, 0.26)	Reference
	0.2-0.3	0.41 (0.22, 0.61)	Reference
	0.3-0.4	0.32 (0.11, 0.53)	Reference
	0.4-0.5	0.41 (0.18, 0.65)	Reference
	0.5-0.7	0.49 (0.25, 0.74)	Reference
	0.7-1	0.74 (0.45, 1.04)	Reference
	1-5	0.38 (0.02, 0.74)	Reference
	5+	2.25 (1.09, 3.41)	Reference
Female	0.1-0.2	0.19 (0.08, 0.31)	0.386
	0.2-0.3	0.38 (0.24, 0.53)	0.795
	0.3-0.4	0.35 (0.20, 0.50)	0.788
	0.4-0.5	0.27 (0.09, 0.44)	0.311
	0.5-0.7	0.45 (0.27, 0.63)	0.784
	0.7-1	0.51 (0.29, 0.72)	0.203
	1-5	0.28 (0.03, 0.54)	0.652
	5+	1.90 (0.91, 2.90)	0.657
<b>By age</b>			
0-64	0.1-0.2	0.05 (-0.01, 0.10)	Reference
	0.2-0.3	0.10 (0.04, 0.17)	Reference
	0.3-0.4	0.13 (0.06, 0.20)	Reference
	0.4-0.5	0.10 (0.02, 0.18)	Reference
	0.5-0.7	0.22 (0.14, 0.31)	Reference
	0.7-1	0.30 (0.20, 0.40)	Reference
	1-5	0.07 (-0.05, 0.19)	Reference
	5+	0.55 (0.05, 1.05)	Reference
65+	0.1-0.2	0.67 (0.00, 1.35)	0.069
	0.2-0.3	2.20 (1.27, 3.13)	< 0.001
	0.3-0.4	1.33 (0.41, 2.26)	0.011
	0.4-0.5	0.77 (-0.25, 1.80)	0.198
	0.5-0.7	1.18 (0.13, 2.24)	0.076
	0.7-1	2.34 (1.06, 3.61)	0.002
	1-5	1.36 (-0.23, 2.96)	0.112
	5+	7.08 (2.22, 11.93)	0.009
<b>By race and ethnicity</b>			
Non-Hispanic White	0.1-0.2	0.11 (-0.00, 0.22)	Reference
	0.2-0.3	0.27 (0.14, 0.39)	Reference
	0.3-0.4	0.23 (0.09, 0.38)	Reference
	0.4-0.5	0.27 (0.11, 0.42)	Reference
	0.5-0.7	0.36 (0.19, 0.53)	Reference
	0.7-1	0.50 (0.30, 0.70)	Reference
	1-5	0.01 (-0.23, 0.24)	Reference
	5+	1.36 (0.51, 2.21)	Reference
Non-Hispanic Black	0.1-0.2	0.20 (-0.15, 0.54)	0.631
	0.2-0.3	0.49 (0.06, 0.92)	0.327
	0.3-0.4	0.45 (-0.01, 0.91)	0.377
	0.4-0.5	0.29 (-0.22, 0.81)	0.922
	0.5-0.7	0.74 (0.20, 1.28)	0.190
	0.7-1	0.72 (0.05, 1.40)	0.536

	1-5	0.93 (0.11, 1.75)	0.035
	5+	3.91 (-0.31, 8.13)	0.245
Hispanic	0.1-0.2	0.26 (-0.01, 0.52)	0.304
	0.2-0.3	0.60 (0.27, 0.93)	0.062
	0.3-0.4	0.39 (0.03, 0.75)	0.431
	0.4-0.5	0.36 (-0.06, 0.77)	0.682
	0.5-0.7	0.38 (-0.05, 0.81)	0.945
	0.7-1	0.35 (-0.20, 0.90)	0.617
	1-5	0.96 (0.33, 1.59)	0.005
	5+	2.12 (-0.42, 4.66)	0.578

\*The *P* value indicates the statistical significance of between-group difference, with males, people aged 0-64, and non-Hispanic White people as the reference group. We added an interaction term of the subgroup variable and smoke PM<sub>2.5</sub> variable into the main model and reported the *P* value of this interaction term.

780