

1 **Differences in HIV-1 reservoir size, landscape characteristics and decay dynamics in acute and**
2 **chronic treated HIV-1 Clade C infection.**

3
4 Kavidha Reddy¹, Guinevere Q. Lee², Nicole Reddy^{1,3}, Tatenda J.B. Chikowore^{1,4}, Kathy Baisley^{1,5},
5 Krista L. Dong^{6,7,8}, Bruce D. Walker^{6,7,8}, Xu G. Yu^{6,8}, Mathias Lichterfeld^{6,8,9}, Thumbi Ndung'u^{1,3,4,6,7,*}

6
7 ¹Africa Health Research Institute, Durban, South Africa, ²Weill Cornell Medical College, New York,
8 USA, ³University of KwaZulu-Natal, Durban, South Africa, ⁴University College of London, London,
9 UK, ⁵London School of Hygiene and Tropical Medicine, London, UK, ⁶Ragon Institute of MGH, MIT
10 and Harvard, Cambridge, MA, USA, ⁷HIV Pathogenesis Programme (HPP), The Doris Duke Medical
11 Research Institute, University of KwaZulu-Natal, Durban, South Africa, ⁸Harvard Medical School,
12 Boston, Massachusetts, USA, ⁹Brigham and Women's Hospital, Boston, MA, USA.

13
14 ***Correspondence:** Thumbi Ndung'u (thumbi.ndungu@ahri.org)
15 Africa Health Research Institute, K-RITH Tower Building, Level 3, Nelson R. Mandela School of
16 Medicine, 719 Umbilo Road, Congella, Durban, 4001, South Africa.

17
18 **Abstract**

19
20 **Background**

21 Persisting HIV reservoir viruses in resting CD4 T cells and other cellular subsets are the main barrier
22 to cure efforts. Antiretroviral therapy (ART) intensification by early initiation has been shown to enable
23 post-treatment viral control in some cases but the underlying mechanisms are not fully understood. We
24 hypothesized that ART initiated during the hyperacute phase of infection before peak will affect the
25 size, decay dynamics and landscape characteristics of HIV-1 subtype C viral reservoirs.

26
27 **Methods**

28 We studied 35 women at high risk of infection from Durban, South Africa identified with hyperacute
29 HIV infection by twice weekly testing for plasma HIV-1 RNA. Study participants included 11 who
30 started ART at a median of 456 (297-1203) days post onset of viremia (DPOV), and 24 who started
31 ART at a median of 1 (1-3) DPOV. We used peripheral blood mononuclear cells (PBMC) to measure
32 total HIV-1 DNA by ddPCR and to sequence reservoir viral genomes by full length individual proviral
33 sequencing (FLIP-seq) from onset of detection of HIV up to 1 year post treatment initiation.

34
35 **Results**

36 Whereas ART in hyperacute infection blunted peak viremia compared to untreated individuals
37 ($p < 0.0001$), there was no difference in total HIV-1 DNA measured contemporaneously ($p = 0.104$).
38 There was a steady decline of total HIV DNA in early treated persons over 1 year of ART ($p = 0.0004$),
39 with no significant change observed in the late treated group. Total HIV-1 DNA after one year of
40 treatment was lower in the early treated compared to the late treated group ($p = 0.02$). Generation of 697
41 single viral genome sequences revealed a difference in the longitudinal proviral genetic landscape over
42 one year between untreated, late treated, and early treated infection: the relative contribution of intact
43 genomes to the total pool of HIV-1 DNA after 1 year was higher in untreated infection (31%) compared
44 to late treated (14%) and early treated infection (0%). Treatment initiated in both late and early infection
45 resulted in a more rapid decay of intact (13% and 51% per month) versus defective (2% and 35% per
46 month) viral genomes. However, intact genomes were still observed one year post chronic treatment
47 initiation in contrast to early treatment where intact genomes were no longer detectable. Moreover,

NOTE: This preprint reports new research that has not been certified by peer review and should not be used to guide clinical practice.

48 early ART reduced phylogenetic diversity of intact genomes and limited the seeding and persistence of
49 cytotoxic T lymphocyte immune escape variants in the reservoir.

50

51 **Conclusions**

52 Overall, our results show that whereas ART initiated in hyperacute HIV-1 subtype C infection did not
53 impact reservoir seeding, it was nevertheless associated with more rapid decay of intact viral genomes,
54 decreased genetic complexity and immune escape in reservoirs, which could accelerate reservoir
55 clearance when combined with other interventional strategies.

56

57 **Keywords**

58 HIV-1, Clade C, reservoir, viral dynamics

59

60 **Introduction**

61 Although antiretroviral therapy (ART) effectively controls HIV, it does not eradicate persisting virus
62 from resting CD4 T cells and other cellular subsets. ART is therefore lifelong, with many side effects
63 and may be financially unsustainable particularly in low- to middle- income countries that are most
64 affected by the HIV epidemic. A cure is therefore necessary but difficult to achieve as the persistent
65 HIV reservoir, which is established soon after infection [1-3] hinders these efforts through its complex
66 nature [4].

67

68 The HIV-1 reservoir is heterogenous and dynamic in genotypic, phenotypic and cellular composition
69 and also differs between individuals and populations, making the source of persistent infection difficult
70 to target. The lability of the viral reservoir has been demonstrated by evidence of clonal expansion that
71 occurs by homeostatic proliferation [5, 6], antigenic stimulation [7] or integration into genic regions
72 controlling cell growth [8-10]. Additionally, its size and genetic composition changes over time with
73 intact and defective proviral genomes displaying differences in their rate of decay during suppressive
74 ART [11-13]. The heterogeneity of the HIV-1 reservoir landscape is further obscured by the integration
75 patterns of virus-intact genomes that determine their ability to generate replication competent viral
76 particles when stimulated [8]. Moreover, recent studies show that the viral reservoir is not restricted to
77 CD4 T cells but persists in other cell types such as monocytes, macrophages [14-19] and follicular
78 dendritic cells [20-23] with each having distinct biological characteristics.

79

80 Among the many studies directed towards HIV-1 cure, some have demonstrated that early ART
81 initiation may be a crucial step in limiting the viral reservoir and achieving post-treatment viral control
82 [24, 25]. Even though early treatment does not prevent reservoir establishment, it does result in a rapid
83 decline of viremia and substantially reduces HIV reservoir size [11, 26-28] which delays viral load
84 rebound and results in sustained virological remission following discontinuation of ART [25, 29, 30].
85 Other described benefits of starting therapy soon after primary infection include preservation of immune
86 function and restriction of viral diversification [26, 28, 31-41]. However, there is a paucity of data that
87 describes the impact of the timing of treatment initiation on the characteristics of the reservoir.

88

89 Most studies describing characteristics of the HIV reservoir are from men living with HIV-1 subtype B
90 in the Global North [12, 13, 15, 42] and show that irrespective of treatment timing, intact proviral
91 genomes decay more rapidly compared to defective viral genomes and that defective viral genomes
92 accumulate quickly during acute infection and are predominant within the viral reservoir.

93

94 HIV-1 reservoir studies in African populations are limited, particularly in subtype C HIV-1 infection,
95 which is the most prevalent form of HIV-1 globally and predominates in southern Africa. The epidemic

96 in Africa is characterized by extensive viral diversity with multiple subtypes, human genetic
97 heterogeneity which influences immunological and disease outcomes; and unique co-morbidities that
98 modulate HIV reservoirs and immune responses [43-46]. The design of a globally applicable HIV cure
99 strategies and interventions to target the viral reservoir depend on a deeper understanding of the
100 variability in the size, composition and characteristics of the genetic landscapes of persisting reservoir
101 genomes in African populations with non-subtype B HIV infections. Moreover, data are lacking on
102 reservoir characteristics in women, despite known sex differences in immune responses and in viral
103 load during primary infection that could potentially impact the reservoir [47-49].

104

105 In this study we performed an extensive longitudinal analysis of HIV-1 subtype C proviral
106 characteristics, that would be informative for understanding mechanisms of reservoir establishment, in
107 a unique hyperacute infection cohort in Durban, South Africa [50, 51]. The cohort was designed to
108 identify acute infection before peak viremia (Fiebig stages I to III) providing HIV-1 testing twice a
109 week to young women at high risk for HIV-1 infection in a region with high population prevalence [50].
110 Following changes in treatment guidelines in South Africa that allowed for ART initiation regardless
111 of CD4 counts, all study participants were offered ART, including those who were newly detected with
112 acute infection who received ART on average a day after first detection of plasma viremia. Study
113 participants underwent frequent clinical follow-up and sampling following infection and initiation of
114 ART, allowing us to study HIV-reservoir establishment and proviral evolution from the earliest possible
115 stages of infection. We hypothesized that the timing of ART will impact HIV-1 proviral genome
116 characteristics in terms of the size, genetic composition, and decay dynamics. The findings of this study
117 provide insights into HIV-1 proviral characteristics that could inform viral targeting strategies for
118 reservoir control in African populations.

119

120 **Results**

121 **Total proviral DNA load kinetics following early and late treatment**

122 In this analysis we included 35 participants (Supplementary Table 1), of whom 11 first initiated
123 treatment during chronic infection at a median of 456 days (297-1203) post detection of viremia and 24
124 who were treated during acute infection at a median of 1 day (1-3) post detection of viremia. All
125 participants were female and 31 (89%) were identified with acute infection at Fiebig stage I. Additional
126 participant characteristics are shown in Table 1.

127

128 We first quantified total HIV-1 DNA which incorporates all forms of intracellular HIV-1 DNA, both
129 intact and defective, including integrated and unintegrated forms, as well as linear and circularized 2-
130 LTR and 1-LTR forms. Total HIV-1 DNA measurements were performed longitudinally, from baseline
131 (1-3 days following detection of HIV), at the time of peak viral load and was also assessed at 6- and 12-
132 months post-infection for untreated participants and 6- and 12-months post-treatment initiation for late
133 and early treated participants. As expected, treatment during acute infection resulted in a significantly
134 reduced peak plasma viral load (median = 4.18 log copies/ml, IQR, 3.40-4.87) compared to untreated
135 acute infection (median = 7.06 log copies/ml, IQR, 6.83-7.54) ($p < 0.0001$, Figure 1A top panel).
136 However, at time of peak viremia, the untreated and the early treated groups did not differ in total
137 proviral DNA load (Figure 1A, bottom panel). Longitudinal measurements showed that treatment
138 initiated during chronic infection resulted in a significant decline in plasma viral load to undetectable
139 levels after 1 year ($p < 0.0001$, Figure 1B, top panel) however it did not reduce total proviral load (Figure
140 1B, bottom panel). In contrast, treatment initiated during acute infection resulted in both a rapid
141 decrease of plasma viremia so that all participants had undetectable viremia at one-year post-ART
142 ($p < 0.0001$, Figure 1C top panel) and steady decrease of total proviral load over the same time period
143 ($p = 0.0004$) (Figure 1C, bottom panel). Even though treatment initiation during both chronic and acute

144 infection resulted in complete suppression of plasma viral load after 1 year (Figure 1D, top panel), total
145 proviral load was still detectable with the early treated group having 1.3 times lower levels of total
146 proviral HIV DNA compared to the chronic treated group ($p=0.02$, Figure 1D, bottom panel). These
147 results indicate that early treatment leads to a measurable decline in proviral DNA during the first year
148 of treatment that is not seen when therapy is initiated during chronic infection.

149

150 **Factors associated with total proviral DNA load after 1 year of suppressive ART**

151 To further understand the impact of host, virological and immunological factors, as well as timing of
152 treatment on the establishment and maintenance of the HIV reservoir, we analysed the associations
153 between virological and immunological markers of clinical disease progression and HIV-1 proviral
154 DNA after 1 year of treatment (Table 2). Analyses for each treatment group were performed
155 independently using multivariate regression models with HIV-1 DNA levels as the dependent variable
156 and other factors, specifically nadir CD4, pre-infection CD4, baseline CD4 counts and peak viral load,
157 as the independent predictor variables. The analysis showed that when treatment was initiated during
158 acute infection, only peak plasma viral load was significantly associated with levels of HIV-1 proviral
159 DNA after 1 year of treatment ($p=0.02$). However, when treatment was initiated during chronic
160 infection both baseline CD4 count (measured 1-3 days after detection of HIV) ($p=0.002$) and peak
161 plasma viral load ($p=0.03$) positively associated with HIV-1 proviral DNA levels, while there was a
162 significant inverse association with nadir CD4 ($p<0.0001$). Other factors such as, total viral burden
163 (area under the viral load curves), CD4:CD8 ratio at enrolment, protective HLA alleles and type of
164 treatment regimen were not associated with HIV-1 proviral DNA measured after 1 year of treatment
165 (data not shown). These data indicate that both host and viral characteristics impact the establishment
166 and maintenance of the viral reservoir.

167

168 **Longitudinal genotypic characterisation of HIV-1 DNA**

169 Quantification of total HIV-1 DNA by ddPCR as described above is based on the amplification of a
170 short 127 base pair fragment of the HIV-1 genome, and thus detects defective viruses that are incapable
171 of replication, thereby overestimating the size and functionality of the reservoir. To address this, we
172 next performed single template near full-genome sequencing to determine potential replication
173 competency by establishing the distribution of genome intact and genome defective latent viruses within
174 cells. Viral genome intactness was determined by the HIVSeqinR v2.7.1 computational bioinformatics
175 pipeline [33].

176

177 For this analysis we studied 24 participants: The chronic infection (late treatment) group ($n=11$)
178 consisted of individuals who remained untreated for over one year following infection and before
179 treatment initiation. Longitudinal sampling at untreated time points was available for 9 of these
180 individuals whereas in two individuals, samples were only available post-treatment initiation. The
181 acutely treated group ($n=13$) received treatment 1-3 days post-detection (Figure 2A). We generated a
182 total of 697 sequences (GenBank accession numbers OR991333-OR991737 and MK643536-
183 MK643827) after sampling a median of 1.4 million PBMC (0.02-4.3 million) per sampling time point.
184 Genome-intact viruses (Figure 2B) accounted for 35% (247/697) of the total pool and were detected in
185 23 participants (12 from the early treatment group and 11 from the late treatment group), with a median
186 of 8 genome-intact viruses (range=1-60) per study participant. Phylogenetic analysis revealed a
187 significant difference in the mean pairwise distances of intact viral sequences derived from early treated
188 (median=0.12% (IQR, 0.07-0.21) compared to late treated participants (median=0.48% (IQR, 0.16-
189 1.08)) ($p=0.04$) (Figure 2C). Overall, 56% of the intact genomes collected in this study were obtained
190 from the untreated study arm, while 11% were obtained from late treated chronic infection and 33%
191 from acutely treated infections (Figure 2D).

192
193 Longitudinal studies revealed that defective proviruses accumulated rapidly during the course of HIV-
194 1 infection with a relative contribution of 65% (450/697) to the total pool of proviral genomes detected.
195 The majority of defective viral genomes collected in this study were detected during untreated infection
196 (44% (199/450), left-most pie), while 39% (175/450) were detected during late treated chronic infection
197 and 17% (76/450) during acute treated infection. Defective genomes contributed 59% to the proviral
198 population in untreated infection, 87% in late (chronic) treated and 48% in acutely treated infection
199 (Figure 2D). Overall, defective genomes also accumulated quickly after onset of infection and were
200 detectable at a proportion of 47% within the first month irrespective of treatment status (data not
201 shown). Large internal deletions within viral genomes were the most common defect with relative
202 frequencies of 77%, 60% and 79% in untreated infection, chronic treated infection and acute treated
203 infection respectively among the pool of defective genomes. Overall, these gene deletions occurred
204 significantly more frequently between *integrase* and *envelope* in the *integrase* to *envelope* gene segment
205 compared to *gag* ($p < 0.0001$ – 0.001), with *nef* being similar to *gag* (Supplementary Figure 1). APOBEC
206 induced hypermutations were the second most common defect observed in untreated (16%) and late
207 (chronic) treated (31%) infection. However, in acute treated infection, hypermutations were relatively
208 infrequent, comprising only 7% of the genome-defective pool. Premature stop codons in one of *gag*,
209 *pol* or *env* occurred at a frequency of 5%, 4% and 13% as a percentage of defective genomes in
210 sequences from untreated, chronic, and acute treated infections respectively. Internal inversions (1%,
211 1%, 1%), and 5' psi defects (2%, 4%, 0%) were other types of genome defects that were detected at
212 minor frequencies in untreated, chronically treated and acutely treated infections respectively.

213
214 To further understand the impact of ART timing on the composition, evolution, and dynamics of the
215 HIV-1 proviral landscape over time, we next performed a stratified analysis of the relative proportions
216 of viral genome sequences in each study arm over 1 year of follow up (Figure 3A-C). Genome-intact
217 viruses were detectable throughout the course of untreated infection while genome-defective viruses
218 also accumulated over this period (Figure 3A). Initiation of ART during chronic infection, at a median
219 of 456 days after detection of plasma viremia, resulted in a decrease in the relative proportion of
220 genome-intact viruses over 1 year of treatment (34% to 14%). However, genome-intact viruses were
221 not completely eradicated and were easily detectable after 12 months of treatment (Figure 3B).
222 Additionally, genomes with large deletions and hypermutations became more prominent in the chronic
223 treated group over 1 year of treatment. In contrast, there was a more rapid decrease in the proportion
224 of genome-intact viruses following ART initiation in acute infection such that these viruses were no
225 longer detectable at our sampling depth after 1 year of treatment (57% to 0%) (Figure 3C).
226 Hypermutated viruses were also less prominent before 12 months during early treated infection (Figure
227 3C). These data suggest that early treatment initiation facilitates faster clearance of genome-intact
228 viruses in the blood compared to late treatment.

229 230 **Decay kinetics of intact and defective proviruses**

231 Studies show that the biology and decay dynamics of genome-intact viruses within the viral reservoir
232 likely differ from that of the genome-defective provirus pool [12, 13]. However, the effect of ART
233 timing on the rate of decay of these different pools of viruses is not well known and has not been
234 investigated in African populations where immune responses and viral genetic heterogeneity may well
235 result in population-specific differences. Here we observed that the absolute proportions of both
236 genome-intact and -defective viruses per million PBMCs sampled decreased in both early treated and
237 late treated participants over the 1-year follow-up period of this study (Figure 4A and 4B).

238

239 To estimate potential differences in the rate of change between genome-intact and -defective viruses
240 within each treatment group we used a linear mixed effects regression model with random intercepts to
241 account for the correlation between repeated observations from the same individual. We fit a model
242 with log DNA copies as the response variable, and time, treatment group, and a time-group interaction
243 as fixed effects, with participant as a random effect. The analysis was restricted to the first 6 months
244 after starting ART as regular measurements for both groups were available over this period.

245
246 Among the acute treated, genome-intact proviruses decreased by 0.308 log copies per month in the first
247 six months after starting ART, corresponding to a decline of 51% per month ($p < 0.001$, Figure 4C). In
248 contrast, among the chronic treated, intact proviruses decreased by only 0.059 log copies per month,
249 corresponding to a decline of 13% per month; however, this decrease was not statistically significant
250 ($p = 0.68$) (Figure 4E).

251
252 Genome-defective proviruses also decreased significantly in the acute treated group by 0.190 log copies
253 per month in the first six months after starting ART, corresponding to a decline of 35% ($p = 0.01$).
254 However, in the chronic treated group the change in the number of log copies of defective provirus in
255 the first 6 months was only 0.015 ($p = 0.88$) corresponding to a decline of just 3.4% per month (Figure
256 4D and 4E). These results indicate that early treatment is associated with a faster decline of both
257 genome-intact and -defective proviruses compared to late treatment.

258
259 **Contribution of clonal expansion to maintenance of proviral populations**
260 Studies show that more than 50% of the latent HIV reservoir is maintained by clonal expansion [52].
261 We assessed viral genome sequences to determine the extent of persistence of infected cell clones after
262 primary infection. Viral genome sequences sharing 100% identity by FLIP-seq was used as a marker of
263 clonal expansion of infected cells as previous studies have shown that proviral genomes that were 100%
264 identical share the same viral integration site whereas proviruses with different integration sites do not
265 share 100% sequence identity [53]. At our sampling depth, we detected clonal expansion in 3/11 (27%)
266 participants who were treated during chronic infection and 4/13 (30%) participants treated during acute
267 infection, showing that in subtype C infection clonal expansion of infected cells occurred as early as
268 one day post detectable viremia (Supplementary Figure 2). Defective clones were detected in two late
269 treated participants at proportions of 6% and 13% of total proviral population, while intact clones were
270 identified in one late treated participant at a proportion of 6% of the total proviral pool. In contrast, a
271 higher proportion of intact clones were detected in early treated participants at 33%, 30%, 37% and
272 24% of the total proviral pool. Although the data is limited and needs to be interpreted with caution,
273 this suggests that clonal expansion of intact proviral genomes is more likely to occur when treatment is
274 initiated early, likely due to the early inhibition of viral replication that prevents the accumulation and
275 seeding of defective viral genomes into the viral reservoir.

276
277 **CTL epitope diversity in the latent reservoir**
278 The emergence of escape mutations in viral epitopes as a mechanism to evade human leukocyte antigen
279 (HLA) class I-restricted immune responses, specifically of CD8⁺ cytotoxic T lymphocytes (CTL),
280 drives viral diversification and is a significant challenge in developing effective therapies against HIV
281 [54-57]. We investigated the impact of late compared to early ART initiation on CTL epitope diversity
282 and escape in the HIV proviral genomes by longitudinally analysing Gag, Nef and Pol CTL epitopes,
283 [58] from single genome viral sequences (excluding only hypermutated sequences), that are restricted
284 by HLA genotypes B*57:02, B*57:03, B*58:01, B*81:01 and A*74:01. These HLA genotypes have
285 been associated with protection against disease progression in HIV-1 subtype C infection [59]. CTL
286 epitope mutations were classified according to the Los Alamos HIV Molecular Immunology Database

287 [58]. Protective HLA genotypes were present in 7/11 (64%) late treated participants and in 7/13 (54%)
288 early treated participants. In the presence of relevant restricting HLA genotypes, mutations compared
289 to the Clade C consensus were detected in 12% of participants with Gag, 23% with Pol and 27% with
290 Nef targeted epitopes after 1 year of follow-up when treatment was initiated late (Figure 5A-C) in
291 contrast to 0%, 0% and 8% respectively when treatment was initiated early (Figure 5G-I) suggesting
292 that chronic treatment is associated with the retention of a wide spectrum of CTL escape mutations
293 within proviral genomes compared to early treatment. Escape mutations detected at baseline (up to 1
294 month after infection) in the presence of restricting HLA genotypes were present in 3% of participants
295 within Gag, 19% within Pol and 23% (Figure 5A-C) within Nef targeted epitopes when treatment was
296 initiated later compared to and 0%, 13% and 11% respectively (Figure 5G-I) with early treatment.
297 Escape mutations observed in early treated participants were present in the earliest sequences that were
298 derived close to the time of infection and therefore likely represent transmitted escape variants. Similar
299 proportions of transmitted escape mutations were present in participants who did not have a protective
300 HLA genotype and remained unchanged after 1 year. (Figure 5D-F and 5J-L).

301

302 **Discussion**

303 In this study we used a well characterised acute HIV infection longitudinal cohort of untreated, early
304 treated and late treated study participants, to perform an extensive quantitative and qualitative analysis
305 of the HIV-1 subtype C proviral landscape. Our aim was to determine whether the timing of treatment
306 has an impact on the viral reservoir size, genetic landscape, and decay kinetics. This was a longitudinal
307 study where we measured total proviral load levels by ddPCR and characterised the genetic landscape
308 of the proviral genomes by next generation sequencing using FLIP-Seq. Total HIV-1 DNA is an
309 important biomarker of clinical outcomes [30, 60-62]. We found that HIV DNA was detectable at high
310 levels during primary infection and even in participants who were treated during acute infection, total
311 HIV DNA levels measured at peak viremia was very similar to untreated participants. In contrast, we
312 found that early but not late treatment was associated with steady decline of total proviral load over the
313 first year of ART. These observations confirm previous data that the viral reservoir is seeded at the
314 earliest stages of infection, possibly before peak viremia [2, 42, 63-65]. However, in contrast, studies
315 have suggested that early ART intervention restricts the seeding of the HIV reservoir in long-lived
316 central memory CD4 T cells [27]. Moreover, it has recently been demonstrated that a small fraction of
317 deeply latent genetically intact proviruses are archived in CD4 T cells during the very first weeks of
318 infection [66]. However, even though early ART initiation has been associated with continued HIV
319 DNA reduction during long-term ART after 10 years of follow up [28], it remains detectable in most
320 individuals indicating that early ART alone is insufficient to achieve viral eradication.

321

322 We also examined the association of clinical and virological factors with the levels of proviral DNA
323 after 1 year of treatment. In both early and late treatment groups, peak plasma viral load was associated
324 with HIV DNA levels. Moreover, in the late treatment group there was a positive association with CD4
325 at enrolment (baseline) and an inverse correlation with nadir CD4 counts. Considering, that the majority
326 of CD4 T cells remain uninfected it is likely that this does not represent a higher number of target cells,
327 and this warrants further investigation. Similar associations with nadir CD4 have been reported
328 previously [67-69] suggesting that during untreated progressive HIV infection, ongoing viral replication
329 may drive the accumulation of long-lived latently infected cells that repopulate the immune system by
330 expansion during successful ART.

331

332 Even though total HIV DNA has been shown to be a clinically significant marker of the HIV reservoir
333 it does not distinguish between replication-competent and -defective viruses that contribute to the viral
334 reservoir. The unique design of the FRESH cohort based on frequent HIV screening and sampling

335 intervals of high-risk uninfected participants allowed us to examine the dynamics of the proviral
336 landscape from the earliest stages of infection (Fiebig I) up to 1 year of ART by near-full-length viral
337 genome sequencing. We performed a comparison of the proviral populations between study participants
338 who were treated during the acute phase of infection and those initiating ART during chronic infection.
339 Defective genomes accumulate rapidly after the onset of infection and contributed to almost half of the
340 proviral population within the first four weeks of infection irrespective of treatment status. Consistent
341 with other studies [33, 42, 70] the overall proviral landscape in the untreated and late treated participants
342 was dominated by defective viruses suggesting that prolonged ongoing viral replication before
343 treatment initiation leads to the accumulation of defective viral genomes.

344

345 A further analysis of the composition of defective viral genomes revealed that genome deletions were
346 most frequently observed between *integrase* and *envelope*. A previous study showed that large deletions
347 are non-random and occur at hotspots in the HIV-1 genome with *envelope* being a hotspot for large
348 deletions [42, 71]. Additionally, we noted differences in the frequencies of hypermutations compared
349 to other studies in subtype B cohorts suggesting that the timing of ART initiation and sex- or race-based
350 differences in immunological factors that impact the reservoir may play a role [42].

351

352 Genome-intact viruses were easily detectable throughout untreated infection but decreased after
353 treatment. In participants who were treated during chronic infection, genome-intact viruses were still
354 detectable after one year of ART compared to early treated individuals where they were no longer
355 detectable. With our limited sampling size and depth, of a median of 1.4 million PBMC (0.02-4.3
356 million) per sampling time point, we cannot rule out that intact genomes may be retrieved with further
357 sampling and investigation into tissue reservoirs of the participants who initiate ART during acute
358 infection [72]. However, these findings do provide further evidence that introducing ART during acute
359 HIV infection limits the size of the HIV reservoir considerably compared to treatment during chronic
360 infection [11, 24-28].

361

362 The intact proviral DNA assay (IPDA) which is a more scalable method that uses multiplexed ddPCR
363 to measure individual proviruses and differentiates intact from defective proviruses without the need
364 for long-distance PCR, has been suggested to provide more accurate quantitative information about the
365 size and composition of the latent reservoir compared to near full genome sequence methods [73].
366 However, this assay has not yet been developed and optimised for quantification of subtype C HIV.

367

368 Studies have shown that during suppressive ART, intact and defective proviruses have different rates
369 of decay that occurs in a biphasic manner [11-13]. Our analysis of decay kinetics was limited to a linear
370 mixed effects regression model as we were unable to fit a model for biphasic decay which requires
371 frequent proviral DNA measurements. Our analysis was further restricted to the first six months of ART
372 as viral genomes were difficult to detect by FLIP-seq in early treated participants after this time. We
373 found that indeed intact genomes decay faster than defective genomes in both early and late treatment
374 groups. Cells containing intact viral genomes likely represent productively infected cells that may be
375 preferentially targeted for clearance by the host immune response or eliminated by viral cytopathic
376 effects [12, 13]. Moreover, early treatment results in a faster decline of both intact and defective
377 genomes compared to treatment initiated during chronic infection and is suggestive of a more effective
378 immune clearance mechanism from preserved immune function. Despite this, it is estimated that 226
379 years of effective ART is necessary to decrease intact proviral DNA levels by 4 log₁₀ [12]. This further
380 indicates that early ART in combination with novel interventional strategies will be needed to achieve
381 a faster viral eradication.

382

383 Several studies show that clonal expansion of HIV-infected cells plays an important role in maintaining
384 the HIV reservoir further contributing to the challenge of eradicating HIV [53, 74-76]. Our findings
385 suggest that clonal expansion of intact viral genomes detected predominantly in early treated infection
386 may contribute to the maintenance of the HIV reservoir in these study participants. Further studies that
387 extend beyond 1 year of treatment will help elucidate whether these clones expand further after several
388 years of treatment. Our analysis of CTL epitope escape mutations, known to drive viral diversification,
389 revealed that early treatment minimises the emergence of CTL escape in Gag, Pol and Nef epitopes
390 despite these participants having protective HLA alleles. In contrast CTL escape was detected when
391 treatment was initiated during chronic infection specifically in the well characterised TW10 gag epitope
392 restricted by HLA B57/58. Transmitted CTL escape mutations detected within the first few weeks of
393 infection were common in both treatment groups confirming previous data from this study population
394 [77]. Moreover, the rapid rate of clearance of viral genomes observed with early treatment could be
395 attributed to the lower proportion of cytotoxic T lymphocyte escape mutations in the proviral genomes
396 of these participants compared with those treated later.

397

398 To our knowledge this is the first study in an African population, dominated by subtype C HIV infection,
399 that examined the impact of the timing of ART initiation on HIV reservoir establishment in a
400 longitudinal setting. Moreover, our data focused on women who are underrepresented in reservoir and
401 cure studies globally. Our data showed that early ART initiation does not blunt proviral DNA seeding
402 in immune reservoirs, but it nevertheless results in a more rapid decay of intact viral genomes, decreases
403 genetic complexity and immune escape. Although early ART alone may not be sufficient to eradicate
404 the persisting viral reservoir, our results suggest that when combined with interventional strategies, it
405 is more likely to achieve an effective HIV cure.

406

407 **Materials and Methods**

408

409 **Ethics Statement**

410 The Biomedical Research Ethics Committee of the University of KwaZulu-Natal and the Institutional
411 Review Board of Massachusetts General Hospital approved the study. All participants provided written
412 informed consent.

413

414 **Study Design and Participants**

415 This was a longitudinal study of the Females Rising through Education, Support, and Health (FRESH)
416 cohort, a prospective, observational study of 18–23-year-old HIV uninfected women at high risk for
417 HIV acquisition, established in Umlazi, Durban, South Africa [50, 51]. Finger prick blood draws were
418 collected from FRESH study participants twice a week and subjected to HIV-1 RNA testing, with the
419 aim of detecting acute HIV infection during Fiebig stage I. The study included a socioeconomic
420 intervention program and HIV prevention interventions including PrEP that coincided with study visits
421 to address challenges faced by the young women that likely contribute to the increased risk of HIV
422 acquisition in this setting. If a participant acquired HIV-1 infection while on the study, blood samples
423 were collected weekly for a month, then monthly until 3 months post infection, then monthly for one
424 year and every 3 months thereafter. Days post onset of viremia (DPOPV) was calculated as the interval
425 between the first positive HIV test and the date of sample collection. Unique participant identifier
426 numbers were assigned to the participants and are only known to the research group.

427

428 Study participants recruited during the first 19 months of the study did not receive antiretroviral (ARV)
429 treatment immediately after detection of acute HIV infection but were monitored and referred for
430 treatment when they became eligible according to national treatment guidelines at the time. The South

431 African national treatment eligibility criteria subsequently changed allowing the immediate initiation
432 of ART for all people living with HIV (PLWH), including those with acute HIV infection as
433 recommended under the World Health Organisation's universal test and treat policy [78]. The treatment
434 schedule was a three-drug daily oral regimen of 300 mg tenofovir disoproxil fumarate, 200 mg
435 emtricitabine, and 600 mg efavirenz. Additionally, following the change in South African first line
436 treatment guidelines to include an integrase inhibitor, raltegravir (400 mg twice a day) was introduced
437 as a fourth drug and was continued for 90 days after viral suppression (<20 copies per mL).

438

439 For this study participants were categorized into 3 groups (untreated, late (chronic) treated, and early
440 (acute) treated) where, 11 remained untreated during acute infection and later started ART during
441 chronic infection at a median of 456 (297-1203) days post onset of viremia (DPOV), while 24 started
442 ART at a median of 1 (1-3) DPOV. Participants were studied at 0-, 1-, 3-, 6-, 9-, 12- and 24-months
443 post onset of viremia and up to 12 months post treatment. Peak viraemia refers to the highest recorded
444 viral load in all participants.

445

446

447 **Quantification of total HIV-1 DNA**

448 Measurement of total HIV-1 DNA was performed as previously described [79]. Total DNA was
449 extracted from total PBMC samples using DNeasy Blood & Tissue Kits (QIAGEN). Droplet digital
450 PCR (ddPCR) (Bio-Rad) was used to measure total HIV-1 DNA and host cell concentration with
451 primers and probes covering HIV-1 5' LTR-*gag* HXB2 coordinates 684–810 (forward primer 5'-
452 TCTCGACGCAGGACTCG-3', reverse primer 5'-TACTGACGCTCTCGCACC-3' probe/56-
453 FAM/CTCTCTCCT/ZEN/TCTAGCTC/ 31ABkFQ/, and human RPP30 gene38 forward primer 5'-
454 GATTTGGACCTGCGAGCG-3', reverse primer 5'-GCGGCTGTCTCCACAAGT-3', probe/56-
455 FAM/CTGACCTGA/ZEN/AGGCTCT/31AbkFQ/). Thermocycling conditions for ddPCR were: 95
456 °C for 10 min, 45 cycles of 94 °C for 30 s and 60 °C for 1 min, 72 °C for 1 min. Thereafter droplets
457 from each sample were analyzed on the Bio-Rad QX200 Droplet Reader and data were analysed using
458 QuantaSoft software (Bio-Rad).

459

460 **Single genome amplification and deep sequencing of near-full length HIV-1 DNA**

461 Near full-length proviral sequences were generated as previously described [79]. Total HIV-DNA copy
462 number as determined by ddPCR was used to calculate the DNA sample dilution to achieve one PCR-
463 positive reaction in every three reactions. This method of limiting dilution gives a Poisson probability
464 of 85.7% that each PCR amplicon originated from a single HIV-DNA template [80]. A nested PCR
465 approach was used to amplify the near-full genome using one unit of Platinum™ Taq DNA Polymerase
466 High Fidelity (Invitrogen) with the following primers: first round PCR: forward primer 5'-
467 AAATCTCTAGCAGTGGCGCCCGAACAG-3', reverse primer 5'-
468 TGAGGGATCTCTAGTTACCAGAGTC-3'; second round PCR: forward primer 5'-
469 GCGCCCGAACAGGGACYTGAAARCGAAAG-3', reverse primer 5'-GCACTCAAGGCAAGCTT
470 TATTGAGGCTTA-3' (HXB2 coordinates 638-9632, 8994 bp). The 20 µL reaction mix contained 1×
471 reaction buffer, 2 mM MgSO₄, 0.2mM dNTP, 0.4 µM each of forward and reverse primers. The thermal
472 cycling conditions were 2 min at 92 °C, 10 cycles [10 s at 92 °C, 30 s at 60 °C, 10 min at 68 °C], 20
473 cycles [10 s at 92 °C, 30 s at 55 °C, 10 min at 68 °C], 10 min at 68 °C, 4 °C infinite hold.

474

475 **Illumina Mi-Seq and Bioinformatics Analysis**

476 All PCR amplicons detectable by gel electrophoresis were subjected to Illumina MiSeq sequencing and
477 thereafter the resulting small reads were *de novo* assembled using in-house UltraCycler v1.0. (Brian

478 Seed and Huajun Wang, unpublished) [79]. Viral genome-intactness was inferred by the computational
479 bioinformatics pipeline HIVSeqinR v2.7.1 [33].

480

481 **HLA Typing**

482 HLA typing was performed using a targeted next-generation sequencing method as previously
483 described [81].

484

485 **Statistical methods**

486 GraphPad Prism 10 was used to perform summary statistical analyses and comparisons among study
487 groups using Fishers' Exact, Mann-Whitney and Kruskal-Wallis and multiple linear regression analysis.

488

489 **Data availability**

490 The data that support the findings of this study are available from the corresponding author (T.N.) upon
491 reasonable request.

492

493 **Acknowledgements**

494 The study cohort and sample collection were supported in part by grants from the Bill and Melinda
495 Gates Foundation (OPP1066973 and OPP1146433), Gilead Sciences, Inc. (Grant ID #00406), the
496 International AIDS Vaccine Initiative (IAVI) (UKZNRSA1001), the NIAID (R37AI067073), the
497 Witten Family Foundation, the Dan and Marjorie Sullivan Foundation, the Mark and Lisa Schwartz
498 Foundation, Ursula Brunner, the AIDS Healthcare Foundation, and the Harvard University Center for
499 AIDS Research (CFAR, P30 AI060354, which is supported by the following institutes and centers co-
500 funded by and participating with the US National Institutes of Health: NIAID, NCI, NICHD, NHLBI,
501 NIDA, NIMH, NIA, FIC, and OAR.). Raltegravir used for immediate treatment was donated by Merck
502 & Co., Inc. This work was also partially supported through the Sub-Saharan African Network for
503 TB/HIV Research Excellence (SANTHE) which is funded by the Science for Africa Foundation to the
504 Developing Excellence in Leadership, Training and Science in Africa (DELTA Africa) programme
505 [Del-22-007] with support from Wellcome Trust and the UK Foreign, Commonwealth & Development
506 Office and is part of the EDCPT2 programme supported by the European Union; the Bill & Melinda
507 Gates Foundation [INV-033558]; and Gilead Sciences Inc., [19275]. All content contained within is
508 that of the authors and does not necessarily reflect positions or policies of any SANTHE funder. For
509 the purpose of open access, the author has applied a CC BY public copyright licence to any Author
510 Accepted Manuscript version arising from this submission. The authors thank all participants in the
511 FRESH cohort who have made this study possible. The authors thank the Massachusetts General
512 Hospital Center for Computational & Integrative Biology DNA Core, specifically Dr. Nicole Stange-
513 Thomann, Dr. Amy Avery, Ms. Kristina Belanger, and Mr. Huajun Wang, for providing them with the
514 Illumina MiSeq deep sequencing service used in this manuscript.

515

516 **Author Contributions**

517 The study was conceptualized and designed by K.R., G.Q.L., M.L., X.G.Y and T.N. and PBMC samples
518 and clinical/demographical data were collected by K.L.D., B.D.W., K.R., and T.N. HIV-1 genotyping
519 laboratory work was done by K.R., G.Q.L., N.R., and T.J.B.C. Results were analyzed by K.R., G.Q.L.,
520 and T.N. K.R., G.Q.L. and T.N. wrote the manuscript; all authors contributed to and approved the
521 manuscript. T.N. supervised the study.

Table 1: Characteristics of study participants

Characteristics	Chronic Treated (n=11)	Acute Treated (n=24)
Age (years)	21 (19-24)	21 (18-24)
Sex		
Female, n (%)	11 (100%)	24 (100%)
Male, n (%)	0 (0%)	0 (0%)
Race/ethnicity, n (%)		
Black	11 (100%)	24 (100%)
Fiebig Stage I at detection, n (%)	10 (91%)	21 (88%)
Treatment Initiation (DPOPV)	456 (297-1203)	1 (1-3)
Time to suppression (days)	104 (30-215)	16 (6-116)
CD4 nadir (cells/ μ l)	383 (204-502)	561 (258-859)
CD4 pre-infection (cells/ μ l)	991 (395-1377)	872 (573-1612)
CD4 at study enrollment (baseline) (cells/ μ l)	716 (204-1377)	863 (421-2075)
Peak plasma viral load (log copies/ml)	7.04 (5.89-7.80)	4.21 (2-7.30)
*Protective HLA Allele, n (%)	6 (55%)	11 (46%)
Treatment Regimen Containing, n (%)		
FDC	11 (100%)	24 (100%)
Raltegravir	0 (0%)	16 (67%)

* HLA-B74:01, HLA-B57:02, HLA-B57:03, HLA-B58:01, HLA-B81:01

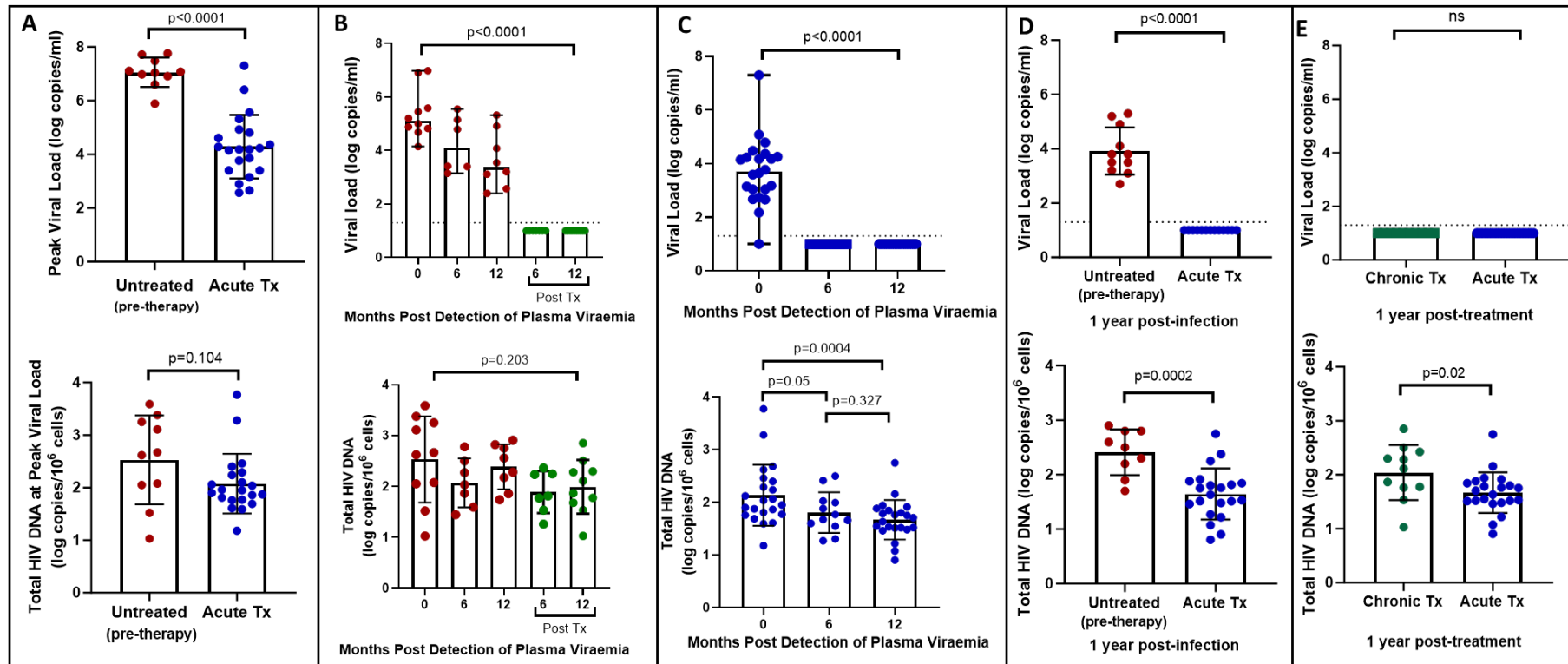


Figure 1: Plasma viral load and total HIV DNA in acute treated and chronic treated individuals. A) peak viral load and total HIV DNA measured at peak viral load in untreated (pre-therapy) and acute treated individuals B) longitudinal viral load and total HIV DNA in untreated acute infection and after 6 and 12 months of treatment C) longitudinal viral load and total HIV DNA in acute treated individuals D) viral load and total HIV DNA after 1 year of treatment in chronic and acute treated individuals.

Table 2: Multivariate analysis of factors that predict total HIV-1 proviral DNA load after 1 year of treatment.

Stage at Treatment Initiation	Variables	Co-efficient	Standard error	t	P value	P value summary	95% confidence interval
Acute Infection	Nadir CD4	-0.0007424	0.00102	0.7277	0.4773	ns	-0.002905 to 0.001420
	Pre-Infection CD4	-0.0001861	0.0004233	0.4395	0.6661	ns	-0.001083 to 0.0007113
	Baseline* CD4	0.0002574	0.0003727	0.6906	0.4997	ns	-0.0005326 to 0.001047
	Peak VL	0.1972	0.07938	2.485	0.0244	*	0.02895 to 0.3655
Chronic Infection	Nadir CD4	-0.006633	0.0007088	9.358	<0.0001	****	-0.008367 to -0.004898
	Pre-Infection CD4	0.0002514	0.0003896	0.6454	0.5425	ns	-0.0007019 to 0.001205
	Baseline* CD4	0.001501	0.0002905	5.166	0.0021	**	0.0007899 to 0.002211
	Peak VL	0.2658	0.09698	2.741	0.0337	*	0.02848 to 0.5031

*at study enrolment

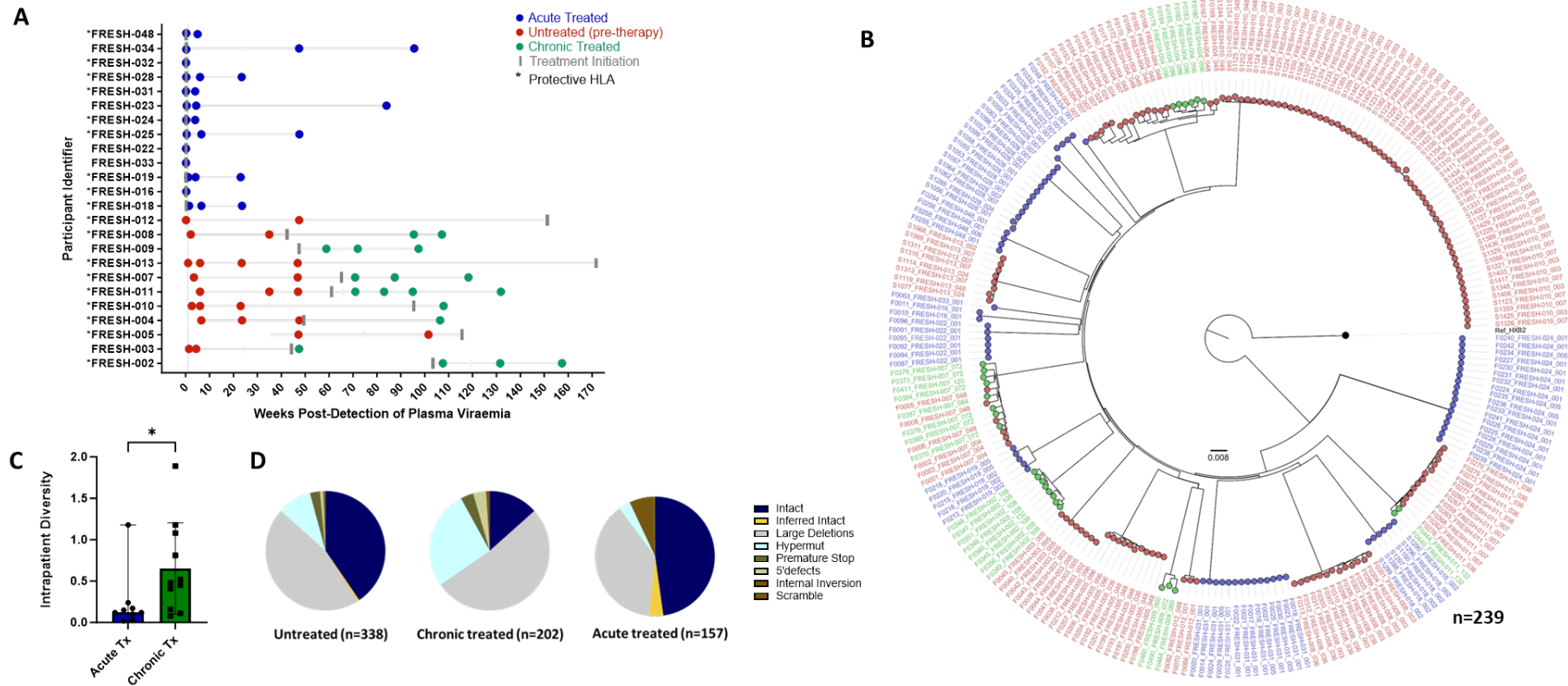


Figure 2: Genotypic characterisation of HIV-DNA sequences. A) PBMC sequencing timepoints in untreated (red), chronic treated (green) and early treated (blue) study participants where each dot represents a sampling time point. Time of treatment initiation is shown by the vertical grey bar. B) Approximately-maximum-likelihood phylogenetic tree of intact HIV-1 DNA genomes constructed using FastTree2. This method was chosen to resolve full-viral-genome sequences with extreme homology; branch lengths were likely inflated. Viral genomes derived from acute treated participants are marked with (*). C) Comparison of intrapatient mean pairwise distances between early and late treated participants. D) Spectrum of HIV genome sequences detected during untreated acute infection, late treated chronic infection, and acute treated infection.

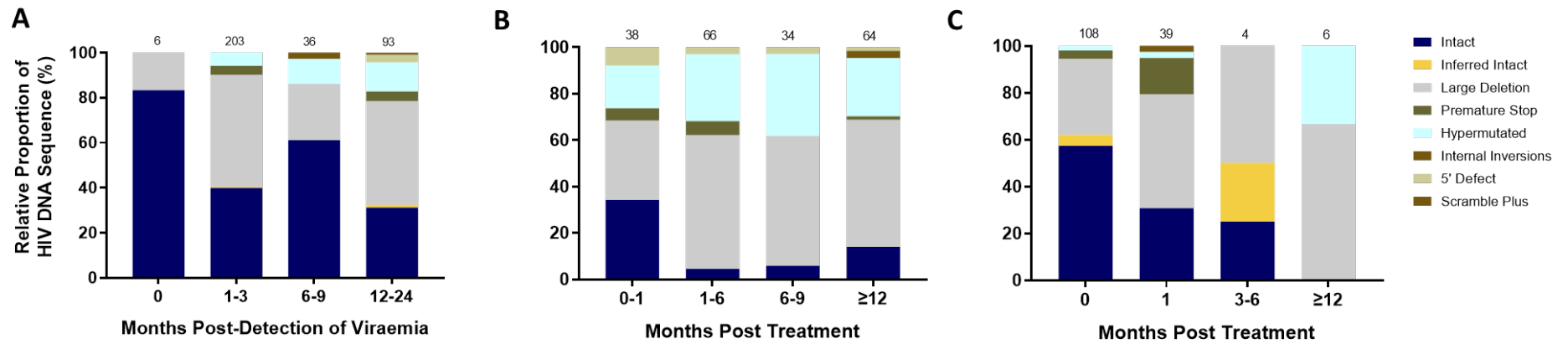


Figure 3: Evolution of the proviral genetic landscape. Relative proportions of intact and defective viral genomes measured longitudinally in A) untreated acute infection for 2 years B) late (chronic) treated infection for 1 year and C) early (acute) treated infection for 1 year. The number of genomes sampled at each time point is indicated above each vertical bar.

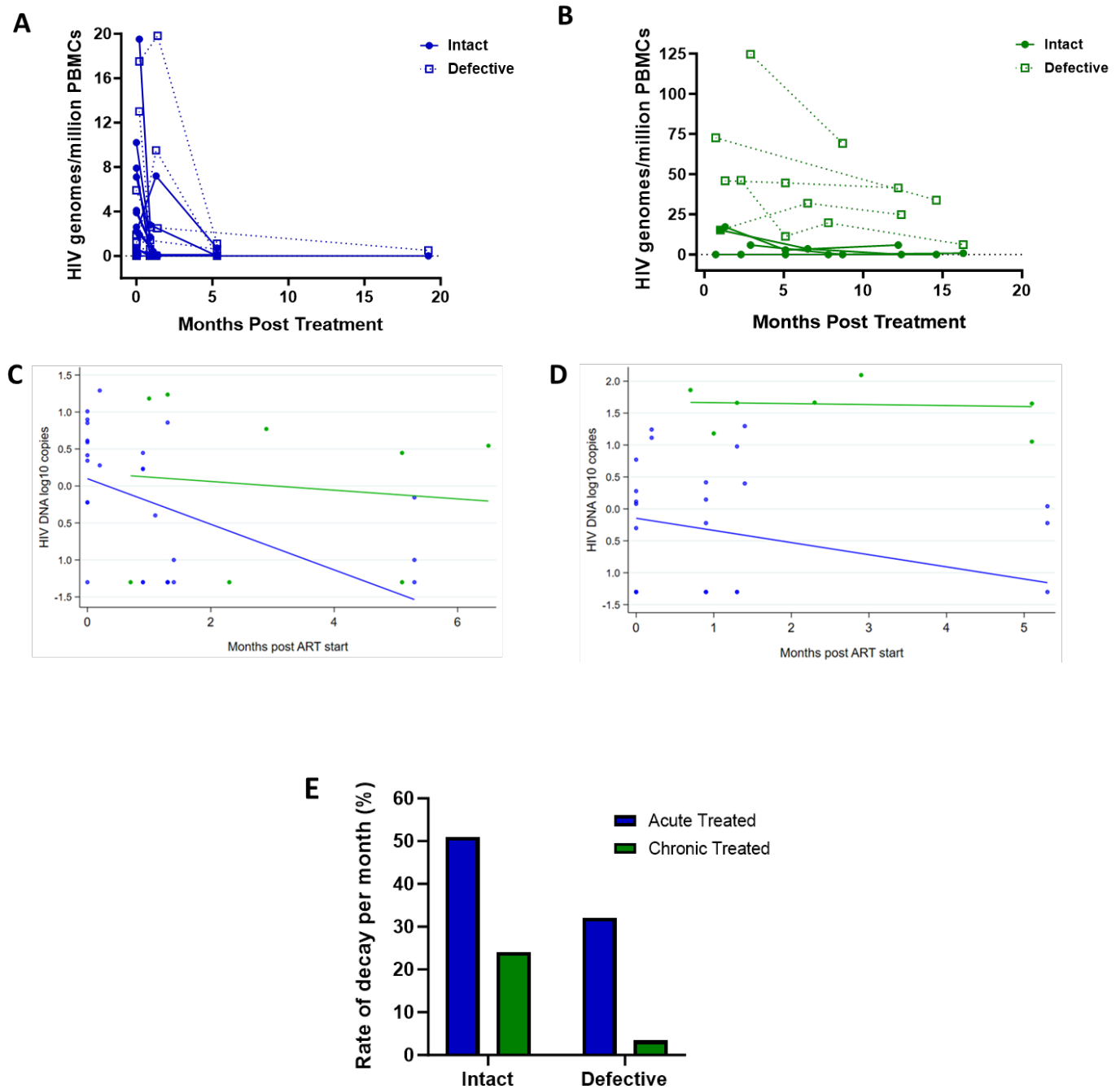


Figure 4: Decay kinetics of intact and defective proviruses. Absolute frequencies of intact and defective HIV-1 DNA sequences per million PBMCs during the 1st year of infection following treatment during A) acute infection and B) chronic infection. Longitudinal analysis of the change in (C) intact and (D) defective provirus copies in the 6 months after ART initiation, comparing the acute treated (blue) and chronic treated (green) groups. Dots represent a measurement from a given participant; solid lines are slopes estimated from linear mixed effect model. (E) Comparison of the monthly rate of decay of intact and defective proviruses in acute and chronic treated infection.

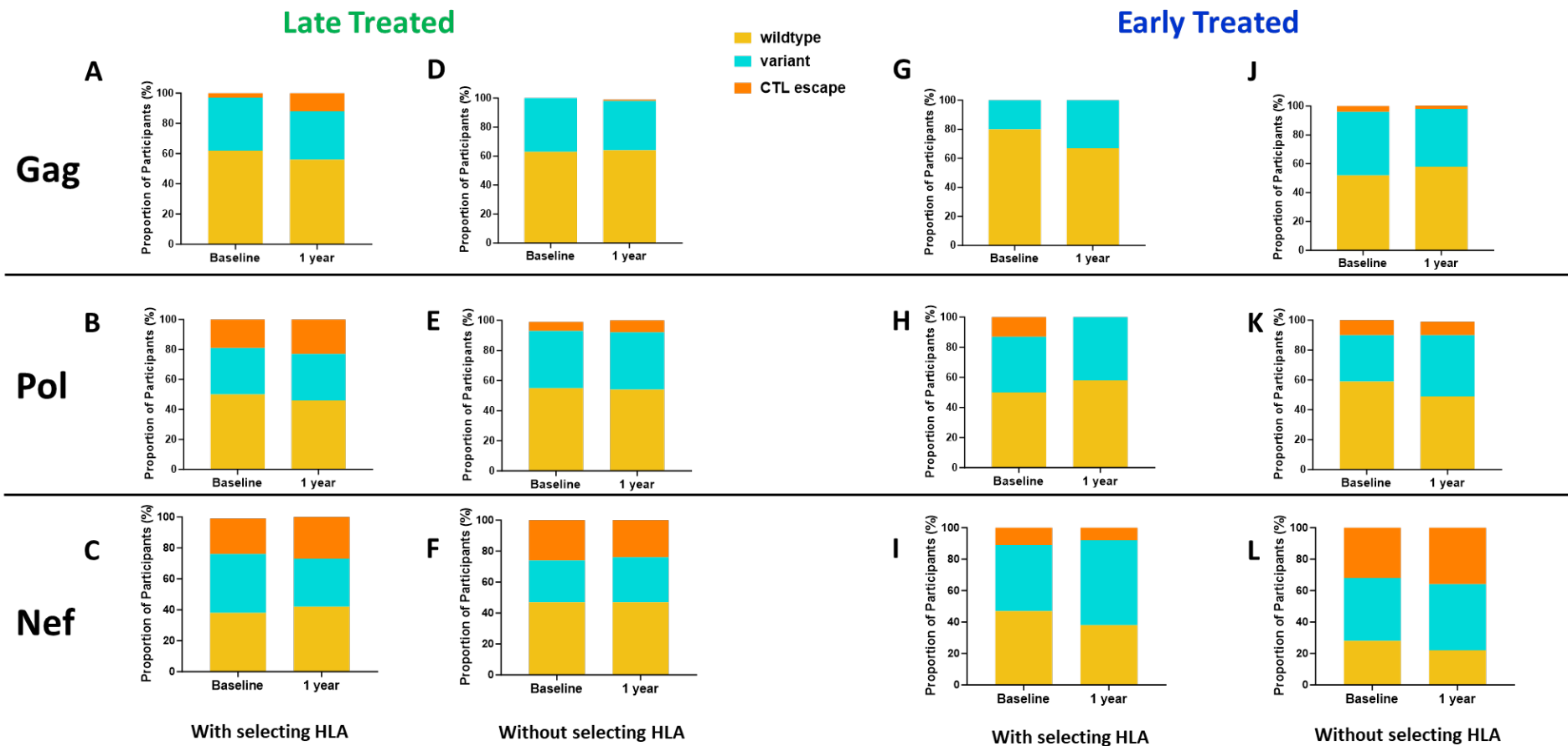
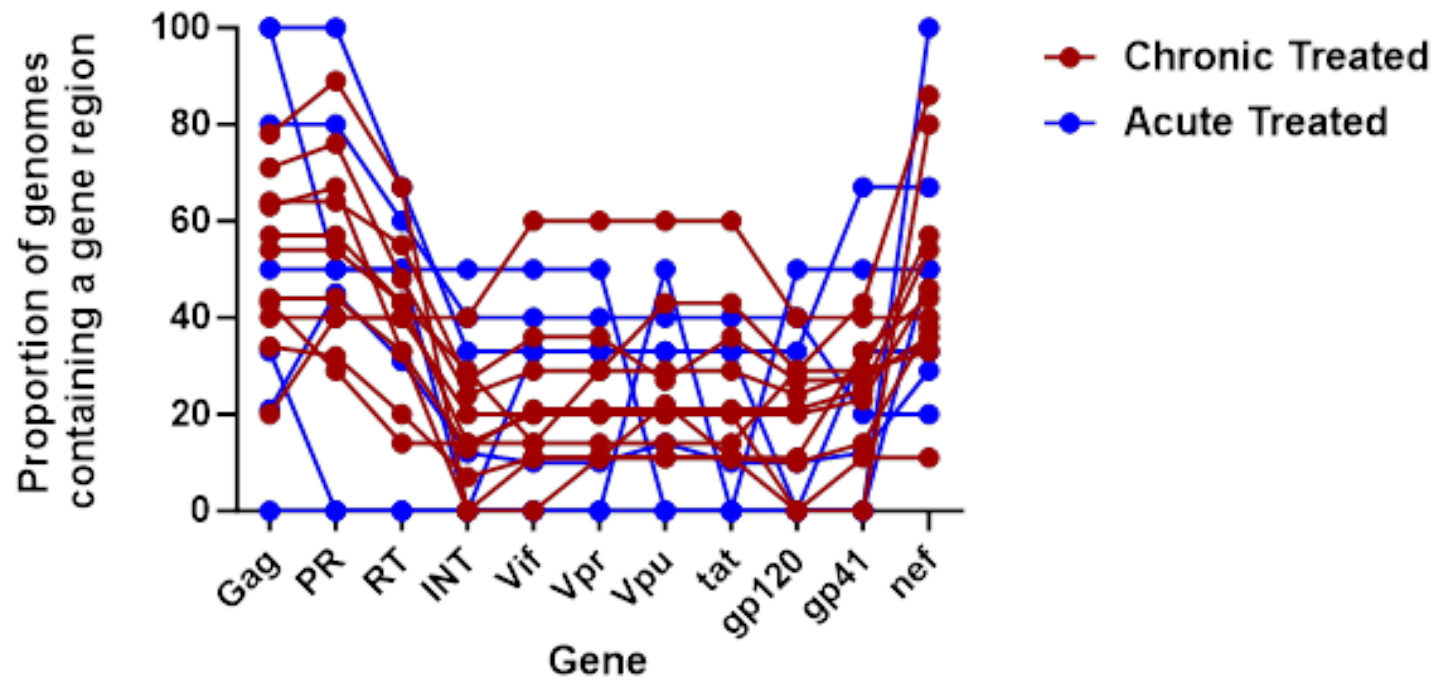


Figure 5: Comparison of CTL epitope diversity in late compared to early treated participants. Proportion of participants with wildtype, variant and CTL escape at baseline (within 1 month of infection) and up to 1 year of infection in Gag (A, D, G, J), Pol (B, E, H, K) and Nef (C, F, I, L) epitopes in participants with protective HLA genotypes (A, B, C, G, H, I) and without protective HLA genotypes (D, E, F, J, K, L).

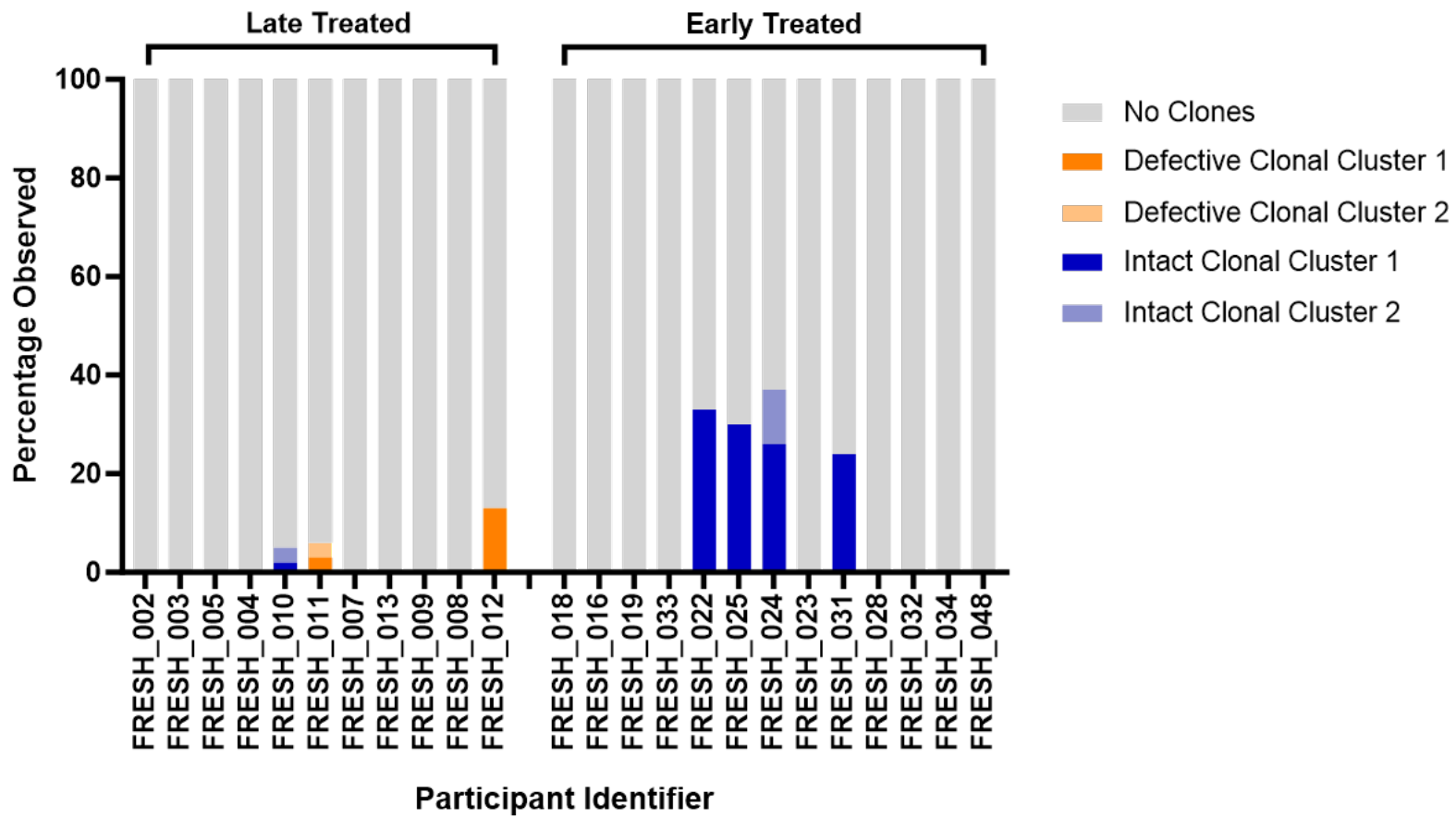
Supplementary Table 1: Clinical and biological characteristics of 35 study participants

Identifier	HLA-A1	HLA-A2	HLA-B1	HLA-B2	HLA-C1	HLA-C2	Fiebig Stage at Detection	Timing of Treatment Initiation (DPOV)	Peak Viral Load	ddPCR	FLIP Seq
FRESH_002	02:01	30:01	44:03	58:02*	04:01	06:02	I	724	5,70E+07	✓	✓
FRESH_003	02:01	30:01	15:10	42:02	08:04	17	I	310	8,20E+06	✓	✓
FRESH_005	24:02	29:02	07:02	44:03	07:01	07:02	I	809	5,20E+07	✓	✓
FRESH_004	03:01	74:01**	15:03	58:02	02:10	06:02	I	346	3,00E+07	✓	✓
FRESH_010	23:01	30:01	15:10	58:01	03:02	16:01	III	668	5,70E+07	✓	✓
FRESH_011	23:01	68:02	08:01	58:01	03:04	07:01	I	427	1,10E+07	✓	✓
FRESH_007	23:01	74:01	35:01	58:01	04:01	06:02	I	456	4,00E+06	✓	✓
FRESH_013	01:01	66:01	39:10	81:01	12:03	18	I	1202	7,70E+05	✓	✓
FRESH_009	43:01	43:01	07:02	15:03	02:10	18	I	416	9,90E+06	✓	✓
FRESH_008	02:05	02:05	58:01	58:01	07:01	07:01	I	297	9,50E+06	✓	✓
FRESH_012	23:01	29:02	42:01	53:01	03:04	17	I	1059	1,20E+07	✓	✓
FRESH_015	30:02	34:02	08:01	44:03	04:01	07:01	I	1	2,30E+04	✓	*
FRESH_018	68:02	74:01	15:03	57:02	02:10	18	V	2	1,50E+02	✓	✓
FRESH_016	01:23	30:02	42:01	58:01	06:02	17	I	1	3,40E+04	✓	✓
FRESH_029	30:01	30:01	39:10	42:02	12:03	17:01	I	1	1,40E+04	✓	*
FRESH_019	02:01	03:01	58:01	58:02	03:02	06:02	I	1	3,60E+05	✓	✓
FRESH_033	68:02	68:02	07:02	15:10	03:04	07:02	I	1	4,40E+02	✓	✓
FRESH_022	30:01	30:02	18:01	53:01	04:01	07:04	I	1	2,10E+05	✓	✓
FRESH_025	01:01	30:01	42:01	47:01	06:02	17	I	3	8,90E+04	✓	✓
FRESH_024	01:01	29:01	44:03	81:01	08:04	18	I	1	5,90E+03	✓	✓
FRESH_030	02:05	29:02	42:01	58:01	07:01	17:01	III	1	2,00E+07	✓	*
FRESH_023	02:05	23:01	08:01	14:01	07:01	08:04	I	3	4,10E+04	✓	✓
FRESH_036	02:05	68:01	35:01	58:01	04:01	07:01	I	1	1,90E+04	✓	*
FRESH_031	01:01	68:02	14:01	81:01	08:02	18	I	1	1,70E+04	✓	✓
FRESH_038	30:01	30:02	08:01	15:03	02:10	07:01	I	1	4,60E+02	✓	*
FRESH_028	03:01	29:02	44:03	58:02	06:02	07:01	I	2	2,60E+06	✓	✓
FRESH_035	29:02	33:03	07:02	44:03	07:01	07:02	I	1	7,70E+02	✓	*
FRESH_032	30:01	74:01	15:03	18:01	02:10	07:04	I	1	7,30E+03	✓	✓
FRESH_034	30:02	33:03	53:01	58:02	04:01	06:02	I	2	8,60E+04	✓	✓
FRESH_039	02:01	02:05	08:01	58:02	06:02	07:01	I	1	2,50E+03	✓	*
FRESH_048	30:01	30:02	15:03	57:03	02:10	07:01	I	1	1,50E+04	✓	✓
FRESH_041	29:02	74:01	44:03	57:03	07:01	07:01	I	1	1,40E+03	✓	*
FRESH_046	23:01	30:01	15:10	18:01	07:04	16:01	I	1	2,50E+03	✓	*
FRESH_042	29:02	30:02	07:02	44:03	07:01	07:02	III	1	1,50E+04	✓	*
FRESH_044	01:01	02:05	42:02	81:01	17:01	18	I	1	6,50E+04	✓	*

*Deleterious HLA class I alleles (red), **protective HLA class I alleles (green).



Supplementary Figure 1: In this cohort of HIV-1 subtype C, genome deletions were most frequently observed between between *integrase* and *envelope* relative to Gag ($p < 0.0001$ – 0.001).



Supplementary Figure 2: Clonal expansion of infected cells was detected in both defective (orange) and intact (blue) genomes in late and early treated study participants. This analysis was performed with all sequences available for each participant at all time points.

References

1. Finzi, D., J. Blankson, J.D. Siliciano, J.B. Margolick, K. Chadwick, T. Pierson, K. Smith, J. Lisziewicz, F. Lori, C. Flexner, T.C. Quinn, R.E. Chaisson, E. Rosenberg, B. Walker, S. Gange, J. Gallant, and R.F. Siliciano, *Latent infection of CD4+ T cells provides a mechanism for lifelong persistence of HIV-1, even in patients on effective combination therapy*. Nat Med, 1999. **5**(5): p. 512-7.
2. Siliciano, J.D., J. Kajdas, D. Finzi, T.C. Quinn, K. Chadwick, J.B. Margolick, C. Kovacs, S.J. Gange, and R.F. Siliciano, *Long-term follow-up studies confirm the stability of the latent reservoir for HIV-1 in resting CD4+ T cells*. Nat Med, 2003. **9**(6): p. 727-8.
3. Wong, J.K., M. Hezareh, H.F. Gunthard, D.V. Havlir, C.C. Ignacio, C.A. Spina, and D.D. Richman, *Recovery of replication-competent HIV despite prolonged suppression of plasma viremia*. Science, 1997. **278**(5341): p. 1291-5.
4. Deeks, S.G., N. Archin, P. Cannon, S. Collins, R.B. Jones, M. de Jong, O. Lambotte, R. Lamplough, T. Ndung'u, J. Sugarman, C.T. Tiemessen, L. Vandekerckhove, S.R. Lewin, and A.S.G.S.S.w.g. International, *Research priorities for an HIV cure: International AIDS Society Global Scientific Strategy 2021*. Nat Med, 2021. **27**(12): p. 2085-2098.
5. Chomont, N., M. El-Far, P. Ancuta, L. Trautmann, F.A. Procopio, B. Yassine-Diab, G. Boucher, M.R. Boulassel, G. Ghattas, J.M. Brenchley, T.W. Schacker, B.J. Hill, D.C. Douek, J.P. Routy, E.K. Haddad, and R.P. Sekaly, *HIV reservoir size and persistence are driven by T cell survival and homeostatic proliferation*. Nat Med, 2009. **15**(8): p. 893-900.
6. Vandergeeten, C., R. Fromentin, S. DaFonseca, M.B. Lawani, I. Sereti, M.M. Lederman, M. Ramgopal, J.P. Routy, R.P. Sekaly, and N. Chomont, *Interleukin-7 promotes HIV persistence during antiretroviral therapy*. Blood, 2013. **121**(21): p. 4321-9.
7. Mendoza, P., J.R. Jackson, T.Y. Oliveira, C. Gaebler, V. Ramos, M. Caskey, M. Jankovic, M.C. Nussenzweig, and L.B. Cohn, *Antigen-responsive CD4+ T cell clones contribute to the HIV-1 latent reservoir*. J Exp Med, 2020. **217**(7).
8. Jiang, C., X. Lian, C. Gao, X. Sun, K.B. Einkauff, J.M. Chevalier, S.M.Y. Chen, S. Hua, B. Rhee, K. Chang, J.E. Blackmer, M. Osborn, M.J. Peluso, R. Hoh, M. Somsouk, J. Milush, L.N. Bertagnolli, S.E. Sweet, J.A. Varriale, P.D. Burbelo, T.W. Chun, G.M. Laird, E. Serrao, A.N. Engelman, M. Carrington, R.F. Siliciano, J.M. Siliciano, S.G. Deeks, B.D. Walker, M. Lichterfeld, and X.G. Yu, *Distinct viral reservoirs in individuals with spontaneous control of HIV-1*. Nature, 2020. **585**(7824): p. 261-267.
9. Maldarelli, F., X. Wu, L. Su, F.R. Simonetti, W. Shao, S. Hill, J. Spindler, A.L. Ferris, J.W. Mellors, M.F. Kearney, J.M. Coffin, and S.H. Hughes, *HIV latency. Specific HIV integration sites are linked to clonal expansion and persistence of infected cells*. Science, 2014. **345**(6193): p. 179-83.
10. Wagner, T.A., S. McLaughlin, K. Garg, C.Y. Cheung, B.B. Larsen, S. Styrchak, H.C. Huang, P.T. Edlefsen, J.I. Mullins, and L.M. Frenkel, *HIV latency. Proliferation of cells with HIV integrated into cancer genes contributes to persistent infection*. Science, 2014. **345**(6196): p. 570-3.
11. Massanella, M., R.A.B. Ignacio, J.R. Lama, A. Pagliuzza, S. Dasgupta, R. Alfaro, J. Rios, C. Ganoza, D. Pinto-Santini, T. Gilada, A. Duerr, and N. Chomont, *Long-term effects of early antiretroviral initiation on HIV reservoir markers: a longitudinal analysis of the MERLIN clinical study*. Lancet Microbe, 2021. **2**(5): p. e198-e209.
12. Peluso, M.J., P. Bacchetti, K.D. Ritter, S. Beg, J. Lai, J.N. Martin, P.W. Hunt, T.J. Henrich, J.D. Siliciano, R.F. Siliciano, G.M. Laird, and S.G. Deeks, *Differential decay of intact and defective proviral DNA in HIV-1-infected individuals on suppressive antiretroviral therapy*. JCI Insight, 2020. **5**(4).

13. White, J.A., F.R. Simonetti, S. Beg, N.F. McMyn, W. Dai, N. Bachmann, J. Lai, W.C. Ford, C. Bunch, J.L. Jones, R.M. Ribeiro, A.S. Perelson, J.D. Siliciano, and R.F. Siliciano, *Complex decay dynamics of HIV virions, intact and defective proviruses, and 2LTR circles following initiation of antiretroviral therapy*. Proc Natl Acad Sci U S A, 2022. **119**(6).
14. Andrade, V.M., C. Mavian, D. Babic, T. Cordeiro, M. Sharkey, L. Barrios, C. Brander, J. Martinez-Picado, J. Dalmau, A. Llano, J.Z. Li, J. Jacobson, C.L. Lavine, M.S. Seaman, M. Salemi, and M. Stevenson, *A minor population of macrophage-tropic HIV-1 variants is identified in recrudescing viremia following analytic treatment interruption*. Proc Natl Acad Sci U S A, 2020. **117**(18): p. 9981-9990.
15. Hiener, B., B.A. Horsburgh, J.S. Eden, K. Barton, T.E. Schlub, E. Lee, S. von Stockenström, L. Odevall, J.M. Milush, T. Liegler, E. Sinclair, R. Hoh, E.A. Boritz, D. Douek, R. Fromentin, N. Chomont, S.G. Deeks, F.M. Hecht, and S. Palmer, *Identification of Genetically Intact HIV-1 Proviruses in Specific CD4(+) T Cells from Effectively Treated Participants*. Cell Rep, 2017. **21**(3): p. 813-822.
16. Honeycutt, J.B., A. Wahl, C. Baker, R.A. Spagnuolo, J. Foster, O. Zakharova, S. Wietgreffe, C. Caro-Vegas, V. Madden, G. Sharpe, A.T. Haase, J.J. Eron, and J.V. Garcia, *Macrophages sustain HIV replication in vivo independently of T cells*. J Clin Invest, 2016. **126**(4): p. 1353-66.
17. Koppensteiner, H., R. Brack-Werner, and M. Schindler, *Macrophages and their relevance in Human Immunodeficiency Virus Type I infection*. Retrovirology, 2012. **9**: p. 82.
18. Venanzi Rullo, E., L. Cannon, M.R. Pinzone, M. Ceccarelli, G. Nunnari, and U. O'Doherty, *Genetic Evidence That Naive T Cells Can Contribute Significantly to the Human Immunodeficiency Virus Intact Reservoir: Time to Re-evaluate Their Role*. Clin Infect Dis, 2019. **69**(12): p. 2236-2237.
19. Wightman, F., A. Solomon, G. Khoury, J.A. Green, L. Gray, P.R. Gorry, Y.S. Ho, N.K. Saksena, J. Hoy, S.M. Crowe, P.U. Cameron, and S.R. Lewin, *Both CD31(+) and CD31(-) naive CD4(+) T cells are persistent HIV type 1-infected reservoirs in individuals receiving antiretroviral therapy*. J Infect Dis, 2010. **202**(11): p. 1738-48.
20. Banga, R., F.A. Procopio, E. Lana, G.T. Gladkov, I. Roseto, E.M. Parsons, X. Lian, M. Armani-Tourret, M. Bellefroid, C. Gao, A. Kauzlaric, M. Foglierini, O. Alfageme-Abello, S.H.M. Sluka, O. Munoz, A. Mastrangelo, C. Fenwick, Y. Muller, C.G. Mkindi, C. Daubenberger, M. Cavassini, R. Trunfio, S. Deglise, J.M. Corpataux, M. Delorenzi, M. Lichterfeld, G. Pantaleo, and M. Perreau, *Lymph node dendritic cells harbor inducible replication-competent HIV despite years of suppressive ART*. Cell Host Microbe, 2023. **31**(10): p. 1714-1731 e9.
21. Keele, B.F., L. Tazi, S. Gartner, Y. Liu, T.B. Burgon, J.D. Estes, T.C. Thacker, K.A. Crandall, J.C. McArthur, and G.F. Burton, *Characterization of the follicular dendritic cell reservoir of human immunodeficiency virus type 1*. J Virol, 2008. **82**(11): p. 5548-61.
22. Olivetta, E., C. Chiozzini, C. Arenaccio, F. Manfredi, F. Ferrantelli, and M. Federico, *Extracellular vesicle-mediated intercellular communication in HIV-1 infection and its role in the reservoir maintenance*. Cytokine Growth Factor Rev, 2020. **51**: p. 40-48.
23. Ollerton, M.T., E.A. Berger, E. Connick, and G.F. Burton, *HIV-1-Specific Chimeric Antigen Receptor T Cells Fail To Recognize and Eliminate the Follicular Dendritic Cell HIV Reservoir In Vitro*. J Virol, 2020. **94**(10).
24. Namazi, G., J.M. Fajnzylber, E. Aga, R.J. Bosch, E.P. Acosta, R. Sharaf, W. Hartogensis, J.M. Jacobson, E. Connick, P. Volberding, D. Skiest, D. Margolis, M.C. Sneller, S.J. Little, S. Gianella, D.M. Smith, D.R. Kuritzkes, R.M. Gulick, J.W. Mellors, V. Mehraj, R.T. Gandhi, R. Mitsuyasu, R.T. Schooley, K. Henry, P. Tebas, S.G. Deeks, T.W. Chun, A.C. Collier, J.P. Routy, F.M. Hecht, B.D. Walker, and J.Z. Li, *The Control of HIV After Antiretroviral*

- Medication Pause (CHAMP) Study: Posttreatment Controllers Identified From 14 Clinical Studies.* J Infect Dis, 2018. **218**(12): p. 1954-1963.
25. Saez-Cirion, A., C. Bacchus, L. Hocqueloux, V. Avettand-Fenoel, I. Girault, C. Lecuroux, V. Potard, P. Versmisse, A. Melard, T. Prazuck, B. Descours, J. Guergnon, J.P. Viard, F. Boufassa, O. Lambotte, C. Goujard, L. Meyer, D. Costagliola, A. Venet, G. Pancino, B. Autran, C. Rouzioux, and A.V.S. Group, *Post-treatment HIV-1 controllers with a long-term virological remission after the interruption of early initiated antiretroviral therapy ANRS VISCONTI Study.* PLoS Pathog, 2013. **9**(3): p. e1003211.
 26. Ananworanich, J., N. Chomont, L.A. Eller, E. Kroon, S. Tovanabutra, M. Bose, M. Nau, J.L.K. Fletcher, S. Tipsuk, C. Vandergeeten, R.J. O'Connell, S. Pinyakorn, N. Michael, N. Phanuphak, M.L. Robb, Rv, and R.S.s. groups, *HIV DNA Set Point is Rapidly Established in Acute HIV Infection and Dramatically Reduced by Early ART.* EBioMedicine, 2016. **11**: p. 68-72.
 27. Ananworanich, J., A. Schuetz, C. Vandergeeten, I. Sereti, M. de Souza, R. Rerknimitr, R. Dewar, M. Marovich, F. van Griensven, R. Sekaly, S. Pinyakorn, N. Phanuphak, R. Trichavaroj, W. Rutvisuttinunt, N. Chomchey, R. Paris, S. Peel, V. Valcour, F. Maldarelli, N. Chomont, N. Michael, P. Phanuphak, J.H. Kim, and R.S.S. Group, *Impact of multi-targeted antiretroviral treatment on gut T cell depletion and HIV reservoir seeding during acute HIV infection.* PLoS One, 2012. **7**(3): p. e33948.
 28. Buzon, M.J., E. Martin-Gayo, F. Pereyra, Z. Ouyang, H. Sun, J.Z. Li, M. Piovoso, A. Shaw, J. Dalmau, N. Zangger, J. Martinez-Picado, R. Zurakowski, X.G. Yu, A. Telenti, B.D. Walker, E.S. Rosenberg, and M. Lichterfeld, *Long-term antiretroviral treatment initiated at primary HIV-1 infection affects the size, composition, and decay kinetics of the reservoir of HIV-1-infected CD4 T cells.* J Virol, 2014. **88**(17): p. 10056-65.
 29. Li, J.Z., B. Etemad, H. Ahmed, E. Aga, R.J. Bosch, J.W. Mellors, D.R. Kuritzkes, M.M. Lederman, M. Para, and R.T. Gandhi, *The size of the expressed HIV reservoir predicts timing of viral rebound after treatment interruption.* AIDS, 2016. **30**(3): p. 343-53.
 30. Williams, J.P., J. Hurst, W. Stohr, N. Robinson, H. Brown, M. Fisher, S. Kinloch, D. Cooper, M. Schechter, G. Tambussi, S. Fidler, M. Carrington, A. Babiker, J. Weber, K.K. Koelsch, A.D. Kelleher, R.E. Phillips, J. Frater, and S.P. Investigators, *HIV-1 DNA predicts disease progression and post-treatment virological control.* Elife, 2014. **3**: p. e03821.
 31. Jeewanraj, N., T. Mandizvo, T. Mulaudzi, N. Gumede, Z. Ndhlovu, T. Ndung'u, K. Gounder, and J. Mann, *Partial compartmentalisation of HIV-1 subtype C between lymph nodes, peripheral blood mononuclear cells and plasma.* Virology, 2023. **582**: p. 62-70.
 32. Klooverpris, H.N., S.W. Kazer, J. Mjosberg, J.M. Mabuka, A. Wellmann, Z. Ndhlovu, M.C. Yadon, S. Nhamoyebonde, M. Muenchhoff, Y. Simoni, F. Andersson, W. Kuhn, N. Garrett, W.A. Burgers, P. Kanya, K. Pretorius, K. Dong, A. Moodley, E.W. Newell, V. Kasprovicz, S.S. Abdool Karim, P. Goulder, A.K. Shalek, B.D. Walker, T. Ndung'u, and A. Leslie, *Innate Lymphoid Cells Are Depleted Irreversibly during Acute HIV-1 Infection in the Absence of Viral Suppression.* Immunity, 2016. **44**(2): p. 391-405.
 33. Lee, G.Q., K. Reddy, K.B. Einkauf, K. Gounder, J.M. Chevalier, K.L. Dong, B.D. Walker, X.G. Yu, T. Ndung'u, and M. Lichterfeld, *HIV-1 DNA sequence diversity and evolution during acute subtype C infection.* Nat Commun, 2019. **10**(1): p. 2737.
 34. Mabuka, J.M., A.S. Dugast, D.M. Muema, T. Reddy, Y. Ramlakhan, Z. Euler, N. Ismail, A. Moodley, K.L. Dong, L. Morris, B.D. Walker, G. Alter, and T. Ndung'u, *Plasma CXCL13 but Not B Cell Frequencies in Acute HIV Infection Predicts Emergence of Cross-Neutralizing Antibodies.* Front Immunol, 2017. **8**: p. 1104.
 35. Moir, S., C.M. Buckner, J. Ho, W. Wang, J. Chen, A.J. Waldner, J.G. Posada, L. Kardava, M.A. O'Shea, S. Kottlil, T.W. Chun, M.A. Proschan, and A.S. Fauci, *B cells in early and chronic*

- HIV infection: evidence for preservation of immune function associated with early initiation of antiretroviral therapy.* Blood, 2010. **116**(25): p. 5571-9.
36. Muema, D.M., N.A. Akilimali, O.C. Ndumnego, S.S. Rasehlo, R. Durgiah, D.B.A. Ojwach, N. Ismail, M. Dong, A. Moodley, K.L. Dong, Z.M. Ndhlovu, J.M. Mabuka, B.D. Walker, J.K. Mann, and T. Ndung'u, *Association between the cytokine storm, immune cell dynamics, and viral replicative capacity in hyperacute HIV infection.* BMC Med, 2020. **18**(1): p. 81.
 37. Naidoo, K.K., A.J. Highton, O.O. Baiyegunhi, S.P. Bhengu, K.L. Dong, M.J. Bunders, M. Altfeld, and T. Ndung'u, *Early initiation of antiretroviral therapy preserves the metabolic function of CD4+ T-cells in subtype C HIV-1 infection.* J Infect Dis, 2023.
 38. Naidoo, K.K., O.C. Ndumnego, N. Ismail, K.L. Dong, and T. Ndung'u, *Antigen Presenting Cells Contribute to Persistent Immune Activation Despite Antiretroviral Therapy Initiation During Hyperacute HIV-1 Infection.* Front Immunol, 2021. **12**: p. 738743.
 39. Ndhlovu, Z.M., S.W. Kazer, T. Nkosi, F. Ogunshola, D.M. Muema, G. Anmole, S.A. Swann, A. Moodley, K. Dong, T. Reddy, M.A. Brockman, A.K. Shalek, T. Ndung'u, and B.D. Walker, *Augmentation of HIV-specific T cell function by immediate treatment of hyperacute HIV-1 infection.* Sci Transl Med, 2019. **11**(493).
 40. Rosenberg, E.S., M. Altfeld, S.H. Poon, M.N. Phillips, B.M. Wilkes, R.L. Eldridge, G.K. Robbins, R.T. D'Aquila, P.J. Goulder, and B.D. Walker, *Immune control of HIV-1 after early treatment of acute infection.* Nature, 2000. **407**(6803): p. 523-6.
 41. Rosenberg, E.S., J.M. Billingsley, A.M. Caliendo, S.L. Boswell, P.E. Sax, S.A. Kalams, and B.D. Walker, *Vigorous HIV-1-specific CD4+ T cell responses associated with control of viremia.* Science, 1997. **278**(5342): p. 1447-50.
 42. Bruner, K.M., A.J. Murray, R.A. Pollack, M.G. Soliman, S.B. Laskey, A.A. Capoferri, J. Lai, M.C. Strain, S.M. Lada, R. Hoh, Y.C. Ho, D.D. Richman, S.G. Deeks, J.D. Siliciano, and R.F. Siliciano, *Defective proviruses rapidly accumulate during acute HIV-1 infection.* Nat Med, 2016. **22**(9): p. 1043-9.
 43. Joussef-Pina, S., I. Nankya, S. Nalukwago, J. Baseke, S. Rwambuya, D. Winner, F. Kyeyune, K. Chervenak, B. Thiel, R. Asaad, C. Dobrowolski, B. Luttmann, B. Lawley, C.M. Kityo, W.H. Boom, J. Karn, and M.E. Quinones-Mateu, *Reduced and highly diverse peripheral HIV-1 reservoir in virally suppressed patients infected with non-B HIV-1 strains in Uganda.* Retrovirology, 2022. **19**(1): p. 1.
 44. Messele, T., M. Abdulkadir, A.L. Fontanet, B. Petros, D. Hamann, M. Koot, M.T. Roos, P.T. Schellekens, F. Miedema, and T.F. Rinke de Wit, *Reduced naive and increased activated CD4 and CD8 cells in healthy adult Ethiopians compared with their Dutch counterparts.* Clin Exp Immunol, 1999. **115**(3): p. 443-50.
 45. Nedelec, Y., J. Sanz, G. Baharian, Z.A. Szpiech, A. Pacis, A. Dumaine, J.C. Grenier, A. Freiman, A.J. Sams, S. Hebert, A. Page Sabourin, F. Luca, R. Blekhman, R.D. Hernandez, R. Pique-Regi, J. Tung, V. Yotova, and L.B. Barreiro, *Genetic Ancestry and Natural Selection Drive Population Differences in Immune Responses to Pathogens.* Cell, 2016. **167**(3): p. 657-669 e21.
 46. Sarabia, I. and A. Bosque, *HIV-1 Latency and Latency Reversal: Does Subtype Matter?* Viruses, 2019. **11**(12).
 47. Chang, J.J., M. Woods, R.J. Lindsay, E.H. Doyle, M. Griesbeck, E.S. Chan, G.K. Robbins, R.J. Bosch, and M. Altfeld, *Higher expression of several interferon-stimulated genes in HIV-1-infected females after adjusting for the level of viral replication.* J Infect Dis, 2013. **208**(5): p. 830-8.
 48. Meier, A., J.J. Chang, E.S. Chan, R.B. Pollard, H.K. Sidhu, S. Kulkarni, T.F. Wen, R.J. Lindsay, L. Orellana, D. Mildvan, S. Bazner, H. Streeck, G. Alter, J.D. Lifson, M. Carrington,

- R.J. Bosch, G.K. Robbins, and M. Altfeld, *Sex differences in the Toll-like receptor-mediated response of plasmacytoid dendritic cells to HIV-1*. *Nat Med*, 2009. **15**(8): p. 955-9.
49. Sterling, T.R., D. Vlahov, J. Astemborski, D.R. Hoover, J.B. Margolick, and T.C. Quinn, *Initial plasma HIV-1 RNA levels and progression to AIDS in women and men*. *N Engl J Med*, 2001. **344**(10): p. 720-5.
50. Dong, K.L., A. Moodley, D.S. Kwon, M.S. Ghebremichael, M. Dong, N. Ismail, Z.M. Ndhlovu, J.M. Mabuka, D.M. Muema, K. Pretorius, N. Lin, B.D. Walker, and T. Ndung'u, *Detection and treatment of Fiebig stage I HIV-1 infection in young at-risk women in South Africa: a prospective cohort study*. *Lancet HIV*, 2018. **5**(1): p. e35-e44.
51. Ndung'u, T., K.L. Dong, D.S. Kwon, and B.D. Walker, *A FRESH approach: Combining basic science and social good*. *Sci Immunol*, 2018. **3**(27).
52. Liu, R., F.R. Simonetti, and Y.C. Ho, *The forces driving clonal expansion of the HIV-1 latent reservoir*. *Virol J*, 2020. **17**(1): p. 4.
53. Einkauf, K.B., G.Q. Lee, C. Gao, R. Sharaf, X. Sun, S. Hua, S.M. Chen, C. Jiang, X. Lian, F.Z. Chowdhury, E.S. Rosenberg, T.W. Chun, J.Z. Li, X.G. Yu, and M. Lichterfeld, *Intact HIV-1 proviruses accumulate at distinct chromosomal positions during prolonged antiretroviral therapy*. *J Clin Invest*, 2019. **129**(3): p. 988-998.
54. Borrow, P., H. Lewicki, X. Wei, M.S. Horwitz, N. Peffer, H. Meyers, J.A. Nelson, J.E. Gairin, B.H. Hahn, M.B. Oldstone, and G.M. Shaw, *Antiviral pressure exerted by HIV-1-specific cytotoxic T lymphocytes (CTLs) during primary infection demonstrated by rapid selection of CTL escape virus*. *Nat Med*, 1997. **3**(2): p. 205-11.
55. Goonetilleke, N., M.K. Liu, J.F. Salazar-Gonzalez, G. Ferrari, E. Giorgi, V.V. Ganusov, B.F. Keele, G.H. Learn, E.L. Turnbull, M.G. Salazar, K.J. Weinhold, S. Moore, C.C.C. B, N. Letvin, B.F. Haynes, M.S. Cohen, P. Hraber, T. Bhattacharya, P. Borrow, A.S. Perelson, B.H. Hahn, G.M. Shaw, B.T. Korber, and A.J. McMichael, *The first T cell response to transmitted/founder virus contributes to the control of acute viremia in HIV-1 infection*. *J Exp Med*, 2009. **206**(6): p. 1253-72.
56. Goulder, P.J., A. Edwards, R.E. Phillips, and A.J. McMichael, *Identification of a novel HLA-A24-restricted cytotoxic T-lymphocyte epitope within HIV-1 Nef*. *AIDS*, 1997. **11**(15): p. 1883-4.
57. Koup, R.A. and D.D. Ho, *Shutting down HIV*. *Nature*, 1994. **370**(6489): p. 416.
58. Mamrosh, J.L., David-Fung E.S., Korber, B.T.M., Brander, C., Barouch, D., de Boer, R., Haynes, B.F., Klasse, P.J., Koup, R., Peters, B., Seaman, M., and Walker, B.D., *HIV Molecular Immunology 2022*. 2023, Los Alamos National Laboratory, Theoretical Biology and Biophysics, Los Alamos: New Mexico.
59. Goulder, P.J. and B.D. Walker, *HIV and HLA class I: an evolving relationship*. *Immunity*, 2012. **37**(3): p. 426-40.
60. Avettand-Fenoel, V., L. Hocqueloux, J. Ghosn, A. Cheret, P. Frange, A. Melard, J.P. Viard, and C. Rouzioux, *Total HIV-1 DNA, a Marker of Viral Reservoir Dynamics with Clinical Implications*. *Clin Microbiol Rev*, 2016. **29**(4): p. 859-80.
61. Rouzioux, C. and V. Avettand-Fenoel, *Total HIV DNA: a global marker of HIV persistence*. *Retrovirology*, 2018. **15**(1): p. 30.
62. Rouzioux, C., P. Tremeaux, and V. Avettand-Fenoel, *HIV DNA: a clinical marker of HIV reservoirs*. *Curr Opin HIV AIDS*, 2018. **13**(5): p. 389-394.
63. Chun, T.W., L. Stuyver, S.B. Mizell, L.A. Ehler, J.A. Mican, M. Baseler, A.L. Lloyd, M.A. Nowak, and A.S. Fauci, *Presence of an inducible HIV-1 latent reservoir during highly active antiretroviral therapy*. *Proc Natl Acad Sci U S A*, 1997. **94**(24): p. 13193-7.

64. Colby, D.J., L. Trautmann, S. Pinyakorn, L. Leyre, A. Pagliuzza, E. Kroon, M. Rolland, H. Takata, S. Buranapraditkun, J. Intasan, N. Chomchey, R. Muir, E.K. Haddad, S. Tovanabuttra, S. Ubolyam, D.L. Bolton, B.A. Fullmer, R.J. Gorelick, L. Fox, T.A. Crowell, R. Trichavaraj, R. O'Connell, N. Chomont, J.H. Kim, N.L. Michael, M.L. Robb, N. Phanuphak, J. Ananworanich, and R.V.s. group, *Rapid HIV RNA rebound after antiretroviral treatment interruption in persons durably suppressed in Fiebig I acute HIV infection*. *Nat Med*, 2018. **24**(7): p. 923-926.
65. Whitney, J.B., A.L. Hill, S. Sanisetty, P. Penaloza-MacMaster, J. Liu, M. Shetty, L. Parenteau, C. Cabral, J. Shields, S. Blackmore, J.Y. Smith, A.L. Brinkman, L.E. Peter, S.I. Mathew, K.M. Smith, E.N. Borducchi, D.I. Rosenbloom, M.G. Lewis, J. Hattersley, B. Li, J. Hesselgesser, R. Gelezianas, M.L. Robb, J.H. Kim, N.L. Michael, and D.H. Barouch, *Rapid seeding of the viral reservoir prior to SIV viraemia in rhesus monkeys*. *Nature*, 2014. **512**(7512): p. 74-7.
66. Gantner, P., S. Buranapraditkun, A. Pagliuzza, C. Dufour, M. Pardons, J.L. Mitchell, E. Kroon, C. Sacdalan, N. Tulmethakaan, S. Pinyakorn, M.L. Robb, N. Phanuphak, J. Ananworanich, D. Hsu, S. Vasan, L. Trautmann, R. Fromentin, and N. Chomont, *HIV rapidly targets a diverse pool of CD4(+) T cells to establish productive and latent infections*. *Immunity*, 2023. **56**(3): p. 653-668 e5.
67. Boulassel, M.R., N. Chomont, N.P. Pai, N. Gilmore, R.P. Sekaly, and J.P. Routy, *CD4 T cell nadir independently predicts the magnitude of the HIV reservoir after prolonged suppressive antiretroviral therapy*. *J Clin Virol*, 2012. **53**(1): p. 29-32.
68. Burgard, M., F. Boufassa, J.P. Viard, I. Garrigue, A. Ruffault, J. Izopet, A. Vabret, D. Descamps, P. Colson, J.M. Seigneurin, C. Rouzioux, and A.A.W. Group, *Factors influencing peripheral blood mononuclear cell-associated HIV-1 DNA level after long-term suppressive antiretroviral therapy in 236 patients*. *AIDS*, 2009. **23**(16): p. 2165-71.
69. Fourati, S., P. Flandre, R. Calin, G. Carcelain, C. Soulie, S. Lambert-Niclot, A. Maiga, Z. Ait-Arkoub, R. Tubiana, M.A. Valantin, B. Autran, C. Katlama, V. Calvez, and A.G. Marcelin, *Factors associated with a low HIV reservoir in patients with prolonged suppressive antiretroviral therapy*. *J Antimicrob Chemother*, 2014. **69**(3): p. 753-6.
70. Pinzone, M.R., D.J. VanBelzen, S. Weissman, M.P. Bertuccio, L. Cannon, E. Venanzi-Rullo, S. Migueles, R.B. Jones, T. Mota, S.B. Joseph, K. Groen, A.O. Pasternak, W.T. Hwang, B. Sherman, A. Vourekas, G. Nunnari, and U. O'Doherty, *Longitudinal HIV sequencing reveals reservoir expression leading to decay which is obscured by clonal expansion*. *Nat Commun*, 2019. **10**(1): p. 728.
71. Bruner, K.M., Z. Wang, F.R. Simonetti, A.M. Bender, K.J. Kwon, S. Sengupta, E.J. Fray, S.A. Beg, A.A.R. Antar, K.M. Jenike, L.N. Bertagnolli, A.A. Capoferri, J.T. Kufera, A. Timmons, C. Nobles, J. Gregg, N. Wada, Y.C. Ho, H. Zhang, J.B. Margolick, J.N. Blankson, S.G. Deeks, F.D. Bushman, J.D. Siliciano, G.M. Laird, and R.F. Siliciano, *A quantitative approach for measuring the reservoir of latent HIV-1 proviruses*. *Nature*, 2019. **566**(7742): p. 120-125.
72. Reeves, D.B., E.R. Duke, T.A. Wagner, S.E. Palmer, A.M. Spivak, and J.T. Schiffer, *A majority of HIV persistence during antiretroviral therapy is due to infected cell proliferation*. *Nat Commun*, 2018. **9**(1): p. 4811.
73. White, J.A., J.T. Kufera, N. Bachmann, W. Dai, F.R. Simonetti, C. Armstrong, J. Lai, S. Beg, J.D. Siliciano, and R.F. Siliciano, *Measuring the latent reservoir for HIV-1: Quantification bias in near full-length genome sequencing methods*. *PLoS Pathog*, 2022. **18**(9): p. e1010845.
74. Coffin, J.M., D.W. Wells, J.M. Zerbato, J.D. Kuruc, S. Guo, B.T. Luke, J.J. Eron, M. Bale, J. Spindler, F.R. Simonetti, S. Hill, M.F. Kearney, F. Maldarelli, X. Wu, J.W. Mellors, and S.H. Hughes, *Clones of infected cells arise early in HIV-infected individuals*. *JCI Insight*, 2019. **4**(12).

75. Cohn, L.B., I.T. Silva, T.Y. Oliveira, R.A. Rosales, E.H. Parrish, G.H. Learn, B.H. Hahn, J.L. Czartoski, M.J. McElrath, C. Lehmann, F. Klein, M. Caskey, B.D. Walker, J.D. Siliciano, R.F. Siliciano, M. Jankovic, and M.C. Nussenzweig, *HIV-1 integration landscape during latent and active infection*. *Cell*, 2015. **160**(3): p. 420-32.
76. Ho, Y.C., L. Shan, N.N. Hosmane, J. Wang, S.B. Laskey, D.I. Rosenbloom, J. Lai, J.N. Blankson, J.D. Siliciano, and R.F. Siliciano, *Replication-competent noninduced proviruses in the latent reservoir increase barrier to HIV-1 cure*. *Cell*, 2013. **155**(3): p. 540-51.
77. Gounder, K., N. Padayachi, J.K. Mann, M. Radebe, M. Mokgoro, M. van der Stok, L. Mkhize, Z. Mncube, M. Jaggernath, T. Reddy, B.D. Walker, and T. Ndung'u, *High frequency of transmitted HIV-1 Gag HLA class I-driven immune escape variants but minimal immune selection over the first year of clade C infection*. *PLoS One*, 2015. **10**(3): p. e0119886.
78. WHO *Guideline on when to start antiretroviral therapy and on pre-exposure prophylaxis for HIV*. 2015. 76.
79. Lee, G.Q., N. Orlova-Fink, K. Einkauf, F.Z. Chowdhury, X. Sun, S. Harrington, H.H. Kuo, S. Hua, H.R. Chen, Z. Ouyang, K. Reddy, K. Dong, T. Ndung'u, B.D. Walker, E.S. Rosenberg, X.G. Yu, and M. Lichterfeld, *Clonal expansion of genome-intact HIV-1 in functionally polarized Th1 CD4+ T cells*. *J Clin Invest*, 2017. **127**(7): p. 2689-2696.
80. Lee, G.Q., *Chemistry and Bioinformatics Considerations in Using Next-Generation Sequencing Technologies to Inferring HIV Proviral DNA Genome-Intactness*. *Viruses*, 2021. **13**(9).
81. Lin, Z., A.A. Bashirova, M. Viard, L. Garner, M. Quastel, M. Beiersdorfer, W.K. Kasprzak, M. Akdag, Y. Yuki, P. Ojeda, S. Das, T. Andersson, V. Naranbhai, A. Horowitz, A.J. McMichael, A. Hoelzemer, G.M. Gillespie, W.F. Garcia-Beltran, and M. Carrington, *HLA class I signal peptide polymorphism determines the level of CD94/NKG2-HLA-E-mediated regulation of effector cell responses*. *Nat Immunol*, 2023. **24**(7): p. 1087-1097.