

Estradiol Modulates Resting-State Connectivity in Perimenopausal Depression

Megan Hynd, Kathryn Gibson, Melissa Walsh, Rachel Phillips, Julianna Prim, Tory Eisenlohr-Moul, Erin Walsh, Gabriel Dichter, and Crystal Schiller

Supplemental Material

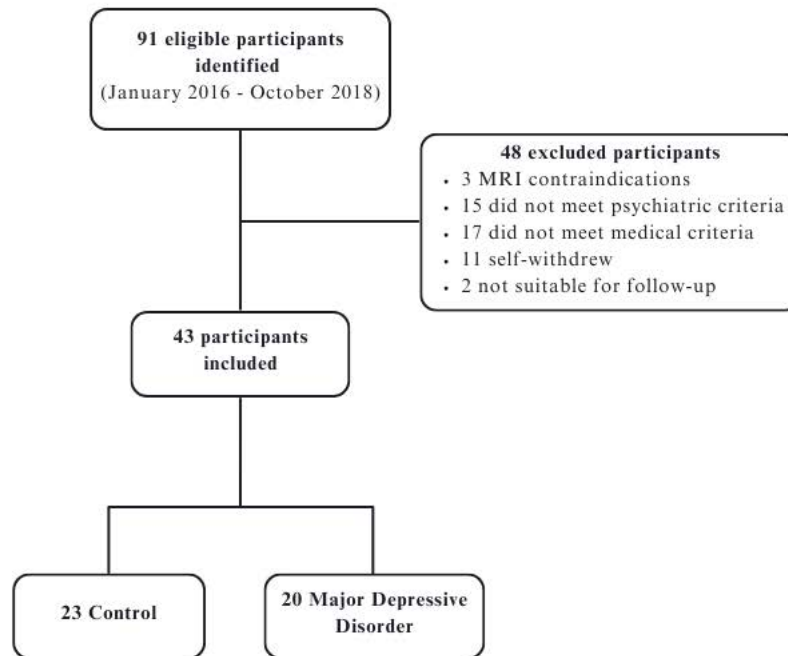


Figure 4. Study Consort Diagram.

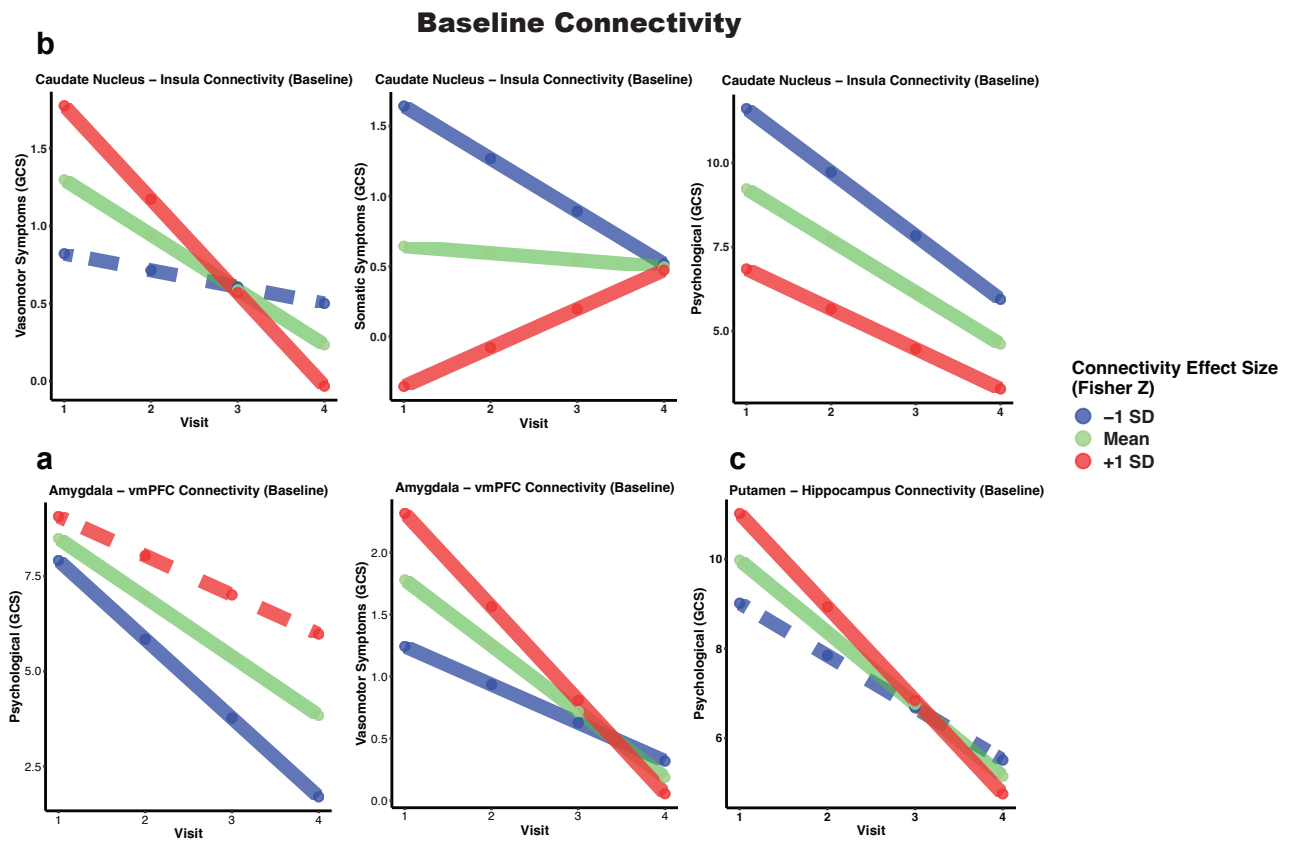


Figure 5. Trajectory Analysis of GCS Subscales Across Four Timepoints, Moderated by Baseline (a) Right Amygdala-Left vmPFC Connectivity, (b) Caudate Nucleus-Left Insula Connectivity, and (c) Right Putamen-Left Hippocampus Connectivity. Solid lines statistically significant.

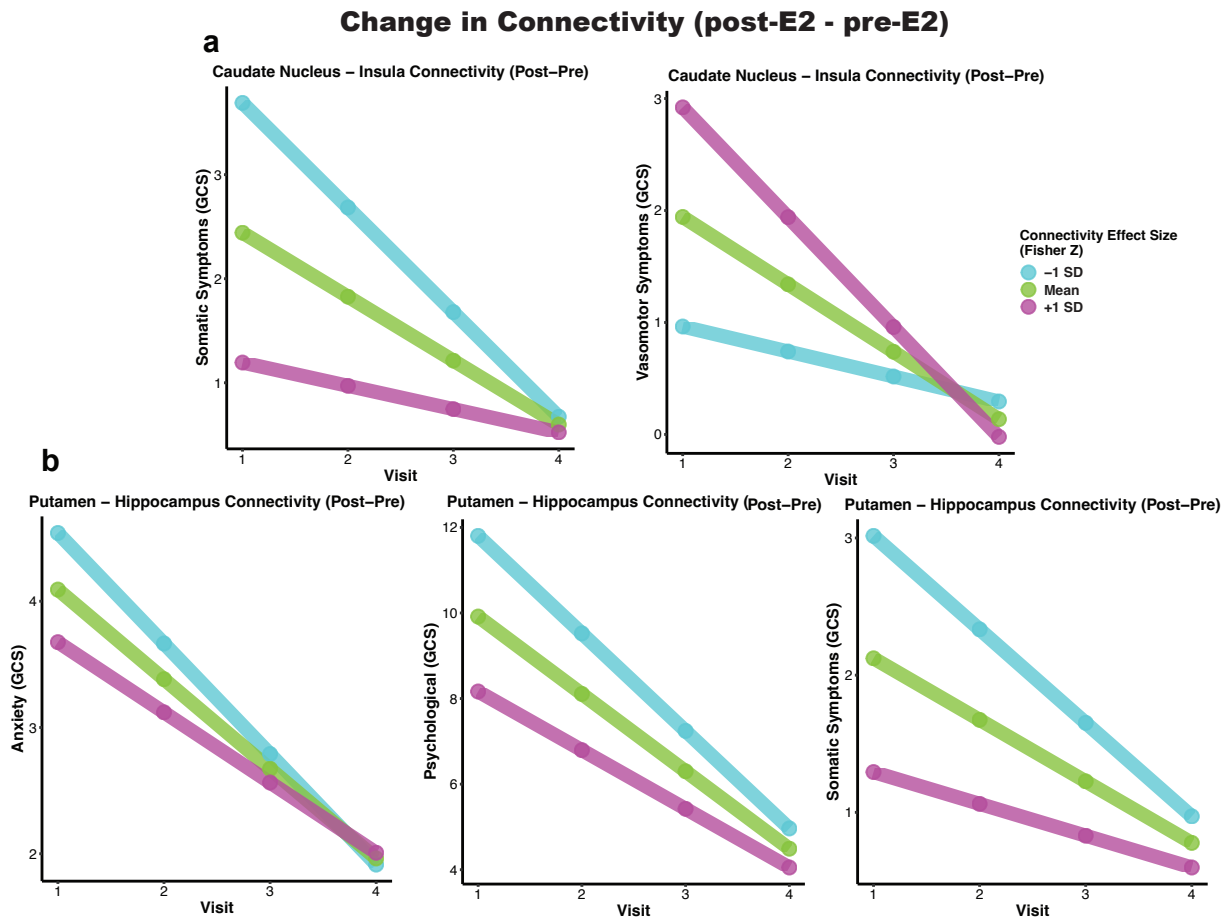


Figure 6. Predictive Analysis of Symptom Trajectory Over Treatment in GCS Subscales, Moderated by Change in (a) Right Caudate Nucleus-Left Insula Connectivity, (b) Right Putamen-Left Hippocampus Connectivity. Solid lines statistically significant.

A.	ROI Seed	Target (x, y, z)	Brodman Area	Target Name	Side	Target Cluster Size	GLM p-FDR	PO-MDD t-statistic (baseline)	
Right Amygdala									
		-14 +58 +6	-	medial prefrontal cortex	L	213	< 0.001***	5.34	
		-10 +42 +12	32	anterior cingulate cortex	L	87	< 0.001***	5.31	
		8 -4 +56	6	supplementary motor area	R	51	0.048*	-4.54	
B.	ROI Seed	Target (x, y, z)	Brodman Area	Target Name	Side	Target Cluster Size	GLM F-test statistic	GLM p-FDR	PO-MDD t-statistic (baseline vs follow-up)
Right Amygdala									
		26	32	ventromedial prefrontal cortex	L	67	10.53	0.016*	4.1
Right Caudate									
		-4	-	insula	L	59	15.17	0.021*	-2.51
Right Putamen									
		-44	-	hippocampus	L	115	21.14	< 0.001***	3.68

Table 2. A) Significant baseline group differences in Baseline connectivity significant results using the right amygdala as the seed region from a priori seeds. B) All significant group x time effects in connectivity results from a priori seeds, follow-up compared with baseline. GLM – general linear model. FDR – false discovery rate.

		Right Caudate Nucleus and Left Insula			Right Amygdala and Left vmPFC			Right Putamen and Left Hippocampus		
		-1 SD	Mean	+1 SD	-1 SD	Mean	+1 SD	-1 SD	Mean	+1 SD
		$\beta(SE)$	$\beta(SE)$	$\beta(SE)$	$\beta(SE)$	$\beta(SE)$	$\beta(SE)$	$\beta(SE)$	$\beta(SE)$	$\beta(SE)$
Symptom Measures										
Baseline Connectivity	MASQ-AD				-0.8(0.4)	1.7(0.6)	4.2(1.0)		-1.7(0.7)	-3.8(0.9)
	GCS Psychological	-1.8(0.3)	-1.5(0.2)	-1.1(0.2)	-1.6(0.3)	-1.1(0.4)			-0.9(0.2)	-1.4(0.3)
	GCS Depression	-1.0(0.1)	-0.7(0.1)	-0.5(0.1)	-0.6(0.2)		0.6(0.3)		-0.5(0.1)	-0.9(0.2)
	GCS Somatic	-1.1(0.1)	-0.8(0.1)	-0.5(0.1)						
	GCS Vasomotor		-0.4(0.1)	-0.6(0.1)	-0.2(0.1)	-0.5(0.1)	-0.7(0.2)			
	GCS Anxiety									
		MASQ-AD		-1.3(0.4)	-3.1(0.4)	-6.9(0.8)	-3.8(0.4)	-0.7(0.4)		
Change in Connectivity	GCS Psychological							-2.1(0.2)	-1.6(0.2)	-1.2(0.3)
	GCS Depression				-1.8(0.2)	-1.2(0.2)	-0.5(0.2)	-1.3(0.1)	-1.0(0.1)	-0.7(0.1)
	GCS Somatic	-0.1(0.1)	-0.6(0.1)	-0.2(0.03)				-0.7(0.1)	-0.4(0.04)	-0.2(0.04)
	GCS Vasomotor	-0.2(0.1)	-0.6(0.1)	-0.10(0.10)						
	GCS Anxiety							-0.9(0.1)	-0.7(0.03)	-0.6(0.1)
		MASQ-AD								
		GCS Psychological								

Table 3. Simple Slope Analysis Results. All data points significant at uncorrected $p < 0.05$; bolded data points are significant at uncorrected $p < 0.001$.