

1                   **“Identification of potential high-risk clones of Carbapenem-Resistant**  
2                   ***Pseudomonas aeruginosa* co-producing, KPC-2, VIM-2 and OXA-74 from tertiary**  
3                   **hospitals in Metro Manila, Philippines”**

4                   Sherill Tesalona<sup>a,b,#</sup>, Miguel Francisco Abulencia<sup>c</sup>, Maria Ruth Pineda-Cortel<sup>a,b,d</sup>, Sylvia A Sapula<sup>e</sup>,  
5                   Henrietta Venter<sup>e</sup>, and Evelina Lagamayo<sup>f,g,h</sup>

6  
7                   <sup>a</sup>The Graduate School, University of Santo Tomas, Manila, Philippines

8                   <sup>b</sup>Department of Medical Technology, Faculty of Pharmacy, University of Santo Tomas, Manila 1015,  
9                   Philippines

10                   <sup>c</sup>Molecular Biology Laboratory, Research Institute for Tropical Medicine, Alabang, Muntinlupa City 1781,  
11                   Philippines

12                   <sup>d</sup>Research Center for the Natural and Applied Sciences, University of Santo Tomas, Manila 1015,  
13                   Philippines

14                   <sup>e</sup>Health and Biomedical Innovation, Clinical Health Sciences, University of South Australia, Adelaide 5000,  
15                   Australia.

16                   <sup>f</sup>Institute of Pathology, St. Luke's Medical Center, Cathedral Heights, Quezon City 1112, Philippines

17                   <sup>g</sup>Institute of Pathology, Chinese General Hospital and Medical Center, Manila 1014, Philippines

18                   <sup>h</sup>Department of Clinical Pathology, University of Santo Tomas Hospital, Manila 1015, Philippines

19

20                   Running Head: Genomic analysis of *Pseudomonas aeruginosa* strains collected in Manila,

21                   Philippines

22

23                   #Address correspondence to Sherill Tesalona, [sdtesalona@ust.edu.ph](mailto:sdtesalona@ust.edu.ph).

24 **ABSTRACT**

25 Carbapenem-resistant *Pseudomonas aeruginosa* (CRPA) is an opportunistic human pathogen and  
26 a global public health concern due to the limited treatment options available for infections by this  
27 pathogen. Identification of antimicrobial resistance (AMR) determinants at an early phase is  
28 crucial to administer the appropriate treatment in a timely manner, thereby alleviating the  
29 transmission and enhancing the outcomes of patients infected with these pathogens. This study  
30 investigated the whole genome sequence (WGS) of 35 CRPA isolates obtained from three  
31 hospitals in Metro Manila, Philippines, collected from August 2022 to January 2023. The  
32 investigation revealed that a high proportion of isolates obtained from Hospital B and C contained  
33 acquired AMR determinants. The traditional multilocus sequence type (MLST) analysis using  
34 Pasteur nomenclature in the PubMLST database revealed six different known sequence types  
35 (STs), namely ST111, ST175, ST1822, ST357, ST3753 and ST389 and the highest number of  
36 unknown STs (27 singletons). Moreover, to delineate the unknown STs identified, the Pasteur  
37 nomenclature in the Pathogenwatch database was used, which led to the identification of novel  
38 STs. Notably, a novel ST4b1c was found to co-produce the metallo-beta-lactamase (MBL) NDM-7,  
39 extended-spectrum beta-lactamases (ESBLs) CTX-M-15 and TEM-2, as well as class D OXA-395.  
40 Furthermore, potential high-risk clones represented by ST389 and novel STs (ST95c6, STf555, and  
41 STab6a) were identified, all of which co-produced carbapenemases KPC-2, VIM-2, and OXA-74.  
42 This study represents the first report in the Philippines on the co-production of ESBL KPC-2, MBL  
43 VIM-2 and Class D OXA-74 hosted by potential high-risk clones and novel STs. It underscores the  
44 need for continuous surveillance and monitoring of other problematic strains.

45

46 **Keywords:** multidrug resistance, antimicrobial resistance, whole genome sequence, sequence  
47 type, carbapenem antibiotic, carbapenemase

## 48 INTRODUCTION

49 *Pseudomonas aeruginosa* (*P. aeruginosa*) is one of the six leading pathogens for deaths  
50 associated with antimicrobial resistance (AMR) and is responsible for an estimated 929,000  
51 deaths attributable to AMR and 3.57 million deaths associated with AMR in 2019 (Murray et al.,  
52 2022). *P. aeruginosa* is an opportunistic pathogen (Arzanlou et al., 2017; Raman et al., 2018; Sid  
53 Ahmed et al., 2022) that causes serious infections in healthcare environments and among  
54 individuals with impaired immune systems (Amsalu et al., 2020; Bogiel et al., 2021). *P. aeruginosa*  
55 that is resistant to carbapenem antibiotics, is an emerging and urgent threat (Murray et al., 2022;  
56 Willyard, 2017). In 2017, the World Health Organization (WHO) categorized carbapenem-  
57 resistant *P. aeruginosa* (CRPA) as "critical," necessitating the urgent development of new  
58 antibiotics (Tacconelli et al., 2018). The emergence and dissemination of the CRPA and the  
59 reported "high-risk" clones that are frequently resistant to multiple antibiotics pose an urgent  
60 threat to the general welfare of the global population and represents a global risk to public health  
61 (Hu et al., 2021; Kocsis et al., 2021; Oliver et al., 2015). The main mechanisms by which *P.*  
62 *aeruginosa* can develop resistance to carbapenems are the following: the production of enzymes  
63 that can degrade carbapenem antibiotics, such as the carbapenemases (Amsalu et al., 2021);  
64 overexpression of drug efflux pumps, like those in the resistance-nodulation-division (RND) family,  
65 which help the cell to export carbapenems (Amsalu et al., 2020); and decreased outer membrane  
66 permeability through the downregulation or loss of OprD porins required for carbapenem entry  
67 (Li et al., 2012; Shariati et al., 2018; Shu et al., 2017). Carbapenemases are enzymes that can  
68 hydrolyze carbapenem antibiotics, rendering them ineffective (Amsalu et al., 2021; Queenan &  
69 Bush, 2007). Carbapenemases are classified into two families: serine and metallo-beta-lactamases

70 (MBLs) (Sahuquillo-Arce, 2015). Serine beta-lactamases such as class A (e.g. KPC, PER) and class  
71 D beta-lactamases (e.g. OXA-10, OXA-74) that require a serine residue at the active site (Bush &  
72 Jacoby, 2010). MBLs are Ambler class B enzymes that require one or two zinc ions for catalytic  
73 activity, such as New Delhi metallo-beta-lactamases (NDM) and Verona-Integron metallo-beta-  
74 lactamases (VIM) (Bush & Jacoby, 2010). MBLs, unlike serine beta-lactamases, are not inhibited  
75 by typical therapeutic inhibitors like clavulanic acid, tazobactam, or sulbactam (Sawa et al., 2020).  
76 Their propensity to efficiently hydrolyze practically all carbapenems (Pedroso et al., 2020; Zhao &  
77 Hu, 2015) and rapid proliferation compromise existing therapeutic choices (Amsalu et al., 2021).  
78 The acquisition of carbapenemases is of great concern as they can hydrolyze most beta-lactam  
79 antibiotics (Schäfer et al., 2019) and are often encoded by genes carried on mobile genetic  
80 elements such as plasmid, transposon, and insertion sequences, facilitating their transfer to other  
81 bacterial species (Yoon & Jeong, 2021).

82 Carbapenemase production is a rare cause of carbapenem resistance in *P. aeruginosa*  
83 isolates in the United States (Karlowsky et al., 2018; Reyes et al., 2023) but is identified in more  
84 than 20% of other regions (Gajdács, 2020; Gill et al., 2021; Karlowsky et al., 2018). Studies have  
85 reported a prevalence of 18.9% of CRPA in the Asia-Pacific region and a high incidence of  
86 carbapenemase-producing *P. aeruginosa* in China and Indonesia (Arowolo et al., 2023; Wang et  
87 al., 2021). Furthermore, according to CDC and ECDC reports, the MBL-producing *P. aeruginosa*  
88 increased from 4.0% (2021) to 9.0% (2022), and the most commonly identified carbapenemases  
89 are VIM, KPC and IMP (CDC, 2019; Nordmann & Poirel, 2019; Reyes et al., 2023; Tacconelli et al.,  
90 2017). Several countries in Southeast Asia, including Bangladesh, India, Indonesia, Nepal, Sri  
91 Lanka, and Thailand, have observed a worrying trend of increasing drug resistance, while the

92 Philippines was not mentioned in the report (Sihombing et al., 2023). However, a study by  
93 Argimon et al., 2020 revealed that in the Philippines, resistance rates to critical pathogen-  
94 antibiotic combinations, such as carbapenem-resistant organisms, have steadily increased over  
95 the past decade (Argimón et al., 2020). In the annual report of the Antimicrobial Resistance  
96 Surveillance Reference Laboratory (ARSRL) of the Philippines, a significant decrease in the  
97 resistance rate of *P. aeruginosa* to meropenem ( $p = 0.0000$ ) from 2021 to 2022 was observed;  
98 however, imipenem was never mentioned (Department of Health - RITM, 2022).

99 In spite of the high incidence of CRPA and the critical need for new antimicrobials against  
100 this pathogen, there is a scarcity of research regarding the genetic and molecular epidemiological  
101 attributes of CRPA strains in the Philippines. Given that AMR and CRPA, in particular, is a global  
102 concern that significantly impact our health and economy, a better understanding of the molecular  
103 epidemiology of this critical pathogen is needed to tailor treatments and mitigate the risk for  
104 dissemination. Hence, this study reports on the surveillance of CRPA from three hospitals in the  
105 Philippines over a six-month period. Whole genome sequencing (WGS) was used to identify  
106 resistance genes and to provide insight into the molecular epidemiologic landscape of *P.*  
107 *aeruginosa*.

## 108 RESULTS

109 **Sample information** A total of 35 CRPA isolates were obtained from a cohort of patients  
110 aged 14 to 93 years, 57.0% of which are male. The distribution of CRPA isolates across hospital  
111 wards and specimen types was as follows: 46.0% ( $n = 16/35$ ) were obtained from the intensive  
112 care units (ICU), followed by the medicine department for adults 37.1% ( $n = 13/35$ ) And pediatrics  
113 2.9% ( $n = 1/35$ ). The obstetrics and gynecology, and surgery departments contributed 9.0% ( $n =$

114 3/35) and 6.0% (n = 2/35) of the CRPA isolates analyzed. The 35 CRPA isolates that were  
115 investigated were obtained from respiratory specimens (endotracheal aspirate, sputum, and  
116 bronchoalveolar lavage), blood, gastric aspirate, wound tissue, ascitic fluid, bone aspirate and  
117 catheter drain with the following distributions: 68.0% (n = 24), 11.0% (n = 4) 9.0% (n = 3), 2.9% (n  
118 = 1), 2.9% (n = 1), 2.9% (n = 1) and 2.9% (n = 1), respectively (Supplemental File 1).

119 **The phenotypic AMR profile reveals high proportion of resistance to ciprofloxacin,**  
120 **ceftazidime, and cefepime**

121 The phenotypic analysis exhibited the following incidence of resistance: ceftazidime (CAZ)  
122 60.0% (n = 21/35), cefepime (FEP) 57.1% (n = 20/35), piperacillin-tazobactam (TZP) 48.6% (n =  
123 17/35), amikacin (AMK) 20.0% (n = 7/35), ciprofloxacin (CIP) 62.9% (n = 22/35), and aztreonam  
124 (ATM) 38.1% (n = 8/21). Resistance to CIP, CAZ, and FEP was observed from a large proportion of  
125 CRPA isolates, 62.9%, 60.0%, and 57.1%, respectively (Table 1). Following the CLSI breakpoints,  
126 there were CRPA isolates obtained from Hospital C that showed resistance to Ceftazidime-  
127 avibactam (CZA) 63.6%, (n = 7/11), and colistin (COL) 25.0%, (n = 5/20). Interestingly, according to  
128 EUCAST, only one (n = 1/20) of the isolates would be COL resistant following the MIC breakpoint  
129 of >4 mg/L. However, not all isolates have been subjected to antimicrobial susceptibility test  
130 against CZA and COL following the Clinical and Laboratory Standards Institute, 32<sup>nd</sup> ed, 2022 (CLSI)  
131 guidelines (CLSI, 2022) and the institutional (isolation site) protocol. Whereas all the CRPA isolates  
132 obtained and investigated are 100.0% IPM resistant, only 82.9% (n=29/35) are tested MEM-  
133 resistant (Table 1 and 2). The phenotypic AMR is shown in Supplemental File 2.

**Table 1: MIC distribution for 35 CRPA isolates obtained from three tertiary hospitals in Metro Manila, from August 2022 to January 2023 following the CLS1, 2022 guidelines.**

Antibiotics	No. of isolates at an MIC (mg/L) of:											Breakpoint(s) <sup>b</sup>	R (%)	
	0.125	0.250	0.5	1	2	4	8	16	32	64	128			
IPM <sup>d, e</sup>								35 <sup>+, a</sup>					≤2/≥8	100.0
MEM <sup>d</sup>		1 <sup>*</sup>				5	3 <sup>+, a</sup>	1, 25 <sup>+, a</sup>					≤2/≥8	82.9
CAZ <sup>d</sup>						11		3, 7 <sup>+</sup>	1 <sup>+, a</sup>	13 <sup>+, a</sup>			≤8/≥32	60.0
FEP <sup>d</sup>				5 <sup>*</sup>	3		3	4, 6 <sup>+</sup>	1 <sup>a</sup>	13 <sup>+, a</sup>			≤8/≥32	57.1
CZA <sup>e</sup>					1	3	7 <sup>+</sup>						(≤8/4)/(≥16/4)	63.6
TZP <sup>d</sup>						4 <sup>*</sup>	1	4	9	12 <sup>*</sup>	5 <sup>+, a</sup>		(≤16/4)/(≥128/4)	48.6
COL <sup>e</sup>				9 <sup>*</sup>	6	4 <sup>a</sup>		1 <sup>+, a</sup>					≤2/≥4	25.0
CIP <sup>d</sup>	1 <sup>*</sup>	4 <sup>*</sup>	6 <sup>*</sup>	2	10 <sup>+, a</sup>	11 <sup>+, a</sup>				1 <sup>+, a</sup>			≤0.5/≥2	62.9
AMK <sup>d</sup>					10 <sup>*</sup>	3	9 <sup>*</sup>	3	3		7 <sup>+, a</sup>		≤16/≥64	20.0
	No. of isolates at zone diameter (mm) <sup>b</sup> of:											Breakpoint(s) <sup>c</sup>		
	12	13	14	15	16	17	18	19	20	21	22			
ATM <sup>f</sup>	1 <sup>a</sup>			7 <sup>a</sup>	1	1			4		7		≥22/≤15	38.1

CRPA, carbapenem-resistant *P. aeruginosa*; AMR, Antimicrobial resistant; IPM, imipenem; MEM, meropenem; CAZ, ceftazidime; FEP, cefepime; CZA, ceftazidime-avibactam; TZP, piperacillin-tazobactam; AMK, amikacin; CIP, ciprofloxacin; COL, colistin; and ATM, aztreonam.

<sup>a</sup> indicates data for resistant strains as per CLSI 2022; \* MIC ≤ the indicated value; + MIC > the indicated value; <sup>b</sup> Breakpoint concentrations - expressed as "susceptibility (mg/L)/resistance (mg/L)" and <sup>c</sup> Breakpoint concentrations - expressed as "zone of inhibition in mm" - are presented according to CLSI 2022; <sup>d</sup> MIC detected using Vitek®2 system (bioMérieux); <sup>e</sup> MIC detected using Thermo Scientific™ Sensititre™; and <sup>f</sup> MIC detected using Kirby Bauer technique.

135           **Differences in the prevalence rate and level of resistance to third (CAZ) and fourth-**  
136 **generation cephalosporin (FEP), and fluoroquinolone (CIP) among the three hospitals**

137           The 35 CRPA isolates investigated are relatively not equally distributed among the three  
138 isolation sites: (Hospital A, n = 8/35), Hospital B, n = 16/35, and Hospital C, n = 11/35), 22.9%,  
139 45.7%, and 31.4%, respectively. Hospital B has the highest number of CRPA isolates investigated  
140 in this study. Analysis revealed that 62.5 % (n =10/16) of CRPA isolates obtained from Hospital B  
141 showed resistance to CAZ, FEP, and CIP, while 72.7% (n = 8/11) of CRPA isolates obtained from  
142 Hospital C showed resistance to both CAZ and FEP and a high proportion of CIP resistance, 90.9%  
143 (n = 10/11) (FIG 1A). Moreover, low proportion of resistance against CAZ, FEP, and CIP was  
144 observed in CRPA isolates obtained from Hospital A. Only 37.5% (n = 3/8) CRPA isolates from  
145 Hospital A showed resistance to the third-generation cephalosporin CAZ, and 25.0% (n = 2/8)  
146 showed resistance against fourth-generation cephalosporin FEP, and fluoroquinolone (CIP). The  
147 incidence rate and resistance level against CZA and COL cannot be compared from the three  
148 isolation sites because the institutions have different protocols for testing multidrug-resistant  
149 organisms (MDROs) against these antibiotics. Of the three isolation sites, only Hospital C has  
150 automatically included testing CZA and COL against MDROs and reported following the cascade  
151 reporting rules and upon the physician's request. Out of the 11 isolates tested from Hospital C,  
152 63.6% (n = 7/11) expressed resistance against CZA (MIC >8 mg/L) and 18.2% (n = 2/11) expressed  
153 resistance against COL (MIC ≥4 mg/L) (FIG 1A, Tables 1 and 2 and Supplemental File 2).



**Table 2. CLSI breakpoints, and minimum inhibitory concentrations (MICs) for antibiotics used in this study and sample type information of 35 CRPA isolates.**

Isolate	Specimen Type	MIC (mg/L)									Zone Diameter Breakpoints (mm)
		IPM <sup>a</sup>	MEM <sup>a</sup>	CAZ <sup>a</sup>	FEP <sup>a</sup>	CZA <sup>b</sup>	TZP <sup>a</sup>	AMK <sup>a</sup>	CIP <sup>a</sup>	COL <sup>b</sup>	ATM <sup>c</sup>
		≥8	≥8	≥32	≥32	≥16	≥128	≥64	≥2	≥4	≤15
P01T	BAL	>16	>16	16	16	N/T	32	<2	1	>16	15
P02T	Blood	>16	>16	4	2	N/T	16	<2	2	N/T	N/T
P03T	ETA	>16	4	>32	8	N/T	32	<2	<0.25	N/T	20
P04T	Blood	>16	>16	4	2	N/T	16	<2	2	N/T	20
P05T	BAL	>16	>16	16	16	N/T	32	16	1	N/T	15
P06T	BA	>16	>16	>64	>64	N/T	>64	<2	<0.25	N/T	12
P07T	Sputum	>16	>16	>64	>64	N/T	>64	<2	0.5	N/T	15
P08T	ETA	>16	>16	4	8	N/T	32	<2	<0.25	N/T	15
P01L	ETA	>16	>8	4	≤1	N/T	32	8	0.5	N/T	16
P02L	Blood	>16	4	4	≤1	N/T	<4	<8	0.5	N/T	22
P03L	Blood	>16	>8	>64	>64	N/T	32	32	>4	N/T	22
P04L	Sputum	>16	>8	>64	>64	N/T	>128	4	<0.125	N/T	22
P05L	ETA	>16	>16	>64	>64	N/T	>64	>64	>64	N/T	15
P06L	Wound Tissue	>16	>16	>64	>64	N/T	32	<2	>4	4	N/T
P07L	ETA	>16	4	4	≤1	N/T	<4	4	>4	N/T	15
P08L	Catheter Drain	>16	4	4	≤1	N/T	<4	4	<0.5	N/T	22
P09L	Gastric Aspirate	>16	≤0.25	4	≤1	N/T	<4	<2	<0.5	2	22
P10L	Gastric Aspirate	>16	4	4	2	N/T	32	<2	<0.5	2	N/T
P11L	ETA	>16	>16	>64	>64	N/T	>128	>64	>4	4	20
P12L	ETA	>16	>16	>64	>64	N/T	>64	>64	>4	N/T	17

P13L	ETA	>16	>16	>64	>64	N/T	>128	>64	>4	2	20
P14L	ETA	>16	>16	>64	>64	N/T	>128	>64	>4	2	N/T
P15L	Ascitic fluid	>16	>16	>64	>64	N/T	>64	>64	>4	2	22
P16L	ETA	>16	>16	>64	>64	N/T	>128	>64	>4	2	N/T
P01C	Sputum	>16	>16	4	8	4	8	<8	>2	<1	N/T
P02C	Sputum	>16	>16	>16	>16	>8*	>64	<8	>2	<1	N/T
P03C	Sputum	>16	>16	>16	16	2	>64	<8	<0.125	<1	N/T
P05C	ETA	>16	>16	4	32	>8*	16	8	>4	4	15
P06C	ETA	>16	>16	>64	>64	>8*	32	<2	>4	4	N/T
P07C	Sputum	>16	>16	>16	>16	>8*	>64	<8	>2	<1	22
P08C	Sputum	>16	>16	16	16	4	16	32	>2	<1	N/T
P09C	Gastric Aspirate	>16	>16	>16	>16	>8*	>64	<8	>2	<1	N/T
P10C	Sputum	>16	16	>16	>16	>8*	>64	16	>2	<1	N/T
P11C	Sputum	>16	>16	>16	>16	4	>64	32	>2	<1	N/T
P12C	Sputum	>16	>16	>16	>16	>8*	>64	16	>2	<1	N/T

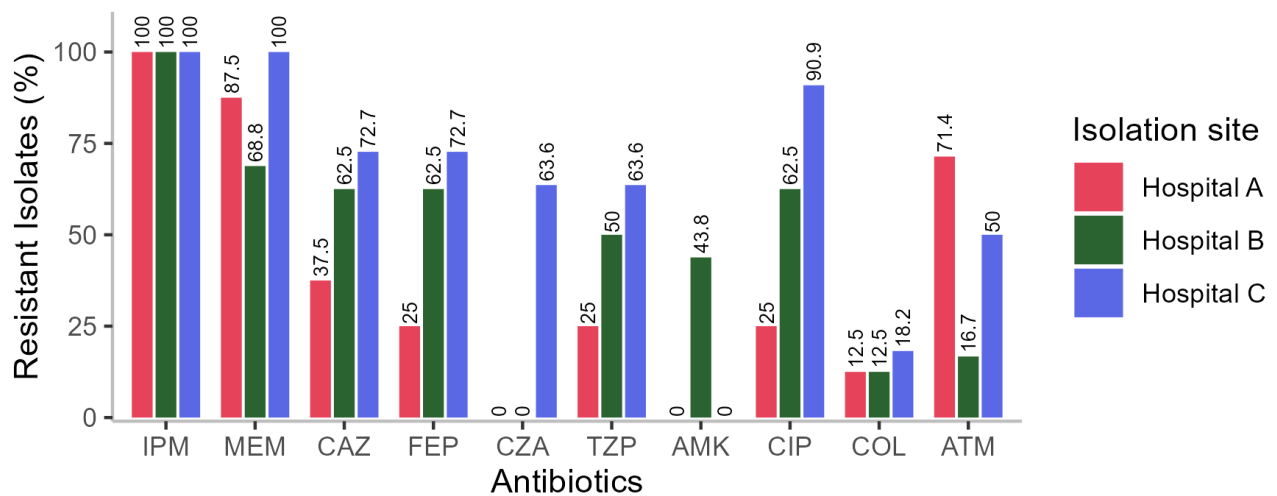
MIC, minimum inhibitory concentration; IPM, imipenem; MEM, meropenem; CAZ, ceftazidime; FEP, cefepime; CZA; ceftazidime-avibactam; TZP, piperacillin-tazobactam; AMK, amikacin; CIP, ciprofloxacin; COL, colistin; TOB, tobramycin; ATM, aztreonam; OprD, outer membrane porin D; AMR, Antimicrobial resistance; BAL, bronchoalveolar lavage; BA, bone marrow aspirate; ETA, endotracheal aspirate; And CRPA, carbapenem-resistant *P. aeruginosa*.

\*, with >8 mg/L MIC reported as R --resistant and an "Intermediate category" is not provided by the CLSI 2022 guidelines. N/T, Not Tested -CLSI guidelines recommend the Antibiotics may warrant primary testing, but their reporting may be selective, such as when the organism is resistant to agents of the same antimicrobial class or for infection control purposes

<sup>a</sup> MIC detected using Vitek®2 system (bioMérieux); <sup>b</sup> MIC detected using Thermo Scientific™ Sensititre™; <sup>c</sup> MIC detected using Kirby Bauer technique  
MIC breakpoints were based on CLSI 2022

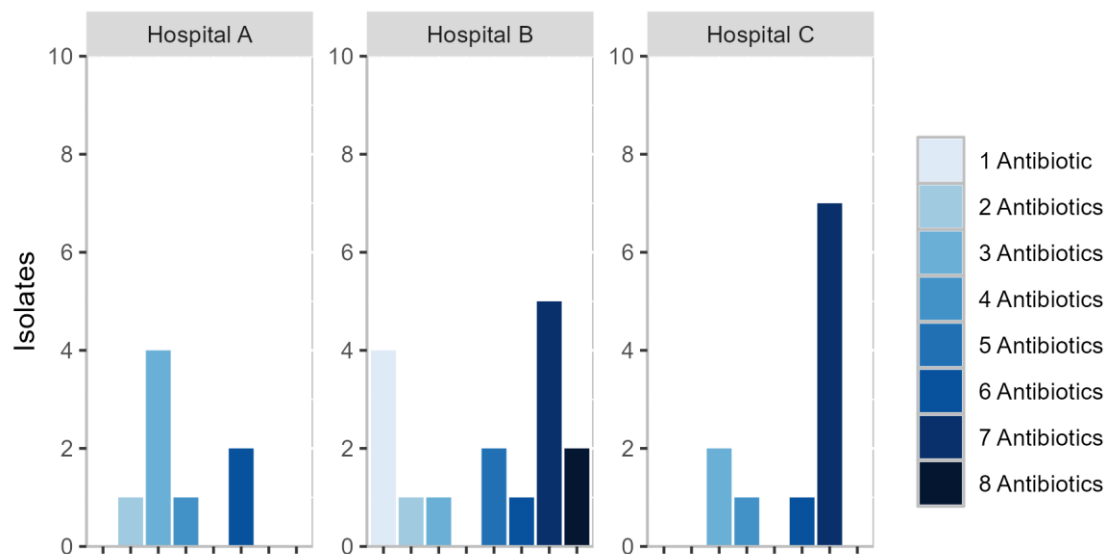
155 A large proportion of CRPA isolates obtained from Hospital B and C showed resistance against CAZ  
156 and FEP (62.5% and 72.7%), in contrast to the incidence of CAZ and FEP resistance in Hospital A,  
157 (37.5% And 25.0%) (FIG 1A). The same observation could be made for CIP resistance. MICs  
158 revealed moderate-level CAZ and FEP resistance (MICs >64 mg/L) against isolates obtained from  
159 Hospital A and B in contrast to Hospital C (FIG 1A).

160



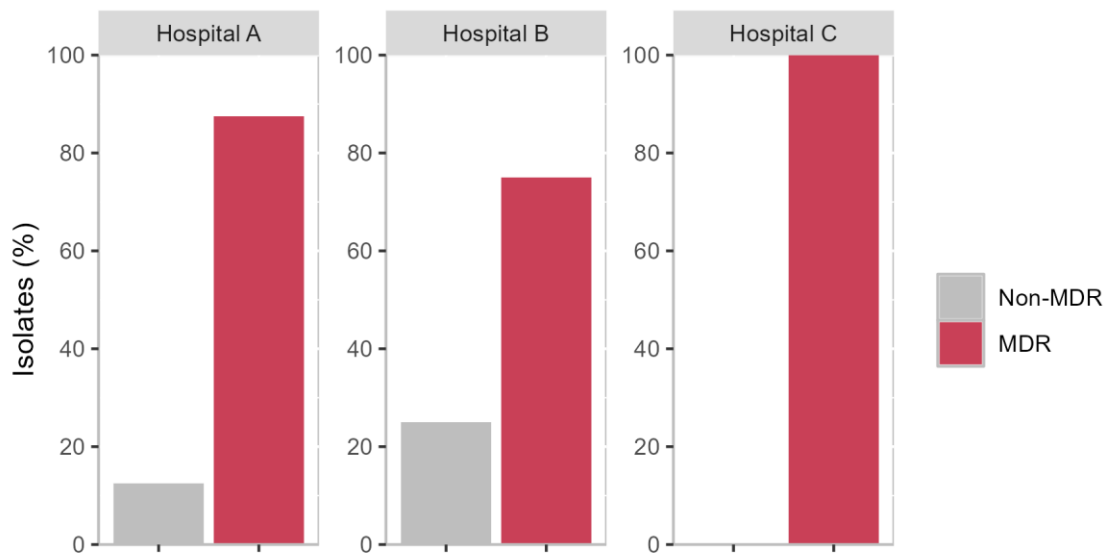
161

162 **FIG 1A.** Percentage of resistant isolates in the three sampling sites. IPM, imipenem; MEM,  
163 meropenem; CAZ, ceftazidime; FEP, cefepime; CZA; ceftazidime-avibactam; TZP, piperacillin-  
164 tazobactam; AMK, amikacin; CIP, ciprofloxacin; COL, colistin; TOB, tobramycin; and ATM,  
165 aztreonam.



174 **FIG 1B.** Prevalence of CRPA isolates (n = 35) per facility and the number of antibiotics (n = 8) each  
175 isolate was resistant against. The CRPA isolates from Hospitals B and C showed resistance against  
176 a greater number of different antibiotics.

177 The MIC values of CRPA isolates showed resistance to multiple classes of antibiotics. All  
178 isolates assessed in this study were resistant to at least one antibiotic (FIG 1B). The MDR  
179 phenotype was observed in CRPA isolates obtained from Hospital C, 100.0% (n = 11/11), Hospital  
180 B, 75.0% (n = 12/16) and Hospital A, 87.5% (n = 7/8) and showed resistance to at least one  
181 antibiotics in three or more antimicrobial class-tested (FIG 1B, 1C, and Supplemental File 2). Out  
182 of the 16 CRPA isolates investigated from Hospital B, 75.0% (n = 12/16) are multidrug-resistant  
183 (MDR). Of these, 68.75% (n = 11/16) expressed resistance against three or more groups of  
184 antibiotics, while 18.2% (n = 2/11) expressed resistance to eight antibiotics tested (FIG 1B and  
185 1C).



194 **FIG 1C.** Number of MDR and non-MDR CRPA isolates per isolation site. Hospital A, 87.5% (n = 7/8);  
195 Hospital B, 75.0% (n = 12/16); and Hospital C, 100.0% (n = 11/11).

196 **Genotyping using MLST analysis for 35 CRPA isolates** Of the 36 CRPA isolates subjected  
197 to whole genome sequencing, 35 CRPA isolates, eight (22.9%) from Hospital A, 16 (45.7%) from  
198 Hospital B and 11 (31.4%) from Hospital C, met the quality control (QC) standards.

199 The genome validation process. (1) Sequence Read Quality: The raw sequences underwent  
200 read trimming and quality assessment using Fastp (Chen, et al., 2018), ensuring a high Phred score  
201 of 30 (Q30) for the sequence reads. (2) Genus-Level Taxonomic Classification: Using the Kraken2  
202 Minikraken database (Wood et al., 2019; Wood & Salzberg, 2014), at least 80% of the reads that  
203 passed the filter belonged to the *Pseudomonas* genus (Vivo et al., 2022). This high percentage of  
204 genus-specific reads confirms the predominance of the target organisms in the sequenced  
205 samples, minimizing the presence of contaminating sequences from other genera. (3) Genome  
206 Coverage: The number of reads provided at least 30x read coverage for *P. aeruginosa* genome.  
207 The read coverage of 30x is generally considered sufficient for accurate genome assembly and

208 variant calling (Liu et al., 2022; Seah et al., 2023) . The genome assembly and variant calling were  
209 performed in the main workflow of the EpiTomas bioinformatics pipeline. The high coverage  
210 ensures a comprehensive representation of the genomes, allowing for reliable downstream  
211 analyses such as resistance gene identification and strain typing. (4) Sequencing Depth: The total  
212 number of reads analyzed for each *P. aeruginosa* genome exceeded two million. The high  
213 sequencing depth ensures that the genomes are well-represented and that the data is suitable  
214 for downstream analyses, such as comparative genomics and identifying genetic determinants  
215 associated with antimicrobial resistance. Additionally, the GC content was also checked. The  
216 included *P. aeruginosa* genomes have a GC content ranging from 64.9 to 67.2%. These GC content  
217 ranges are consistent with the expected values for these species, further confirming the accurate  
218 identification of the target organisms.

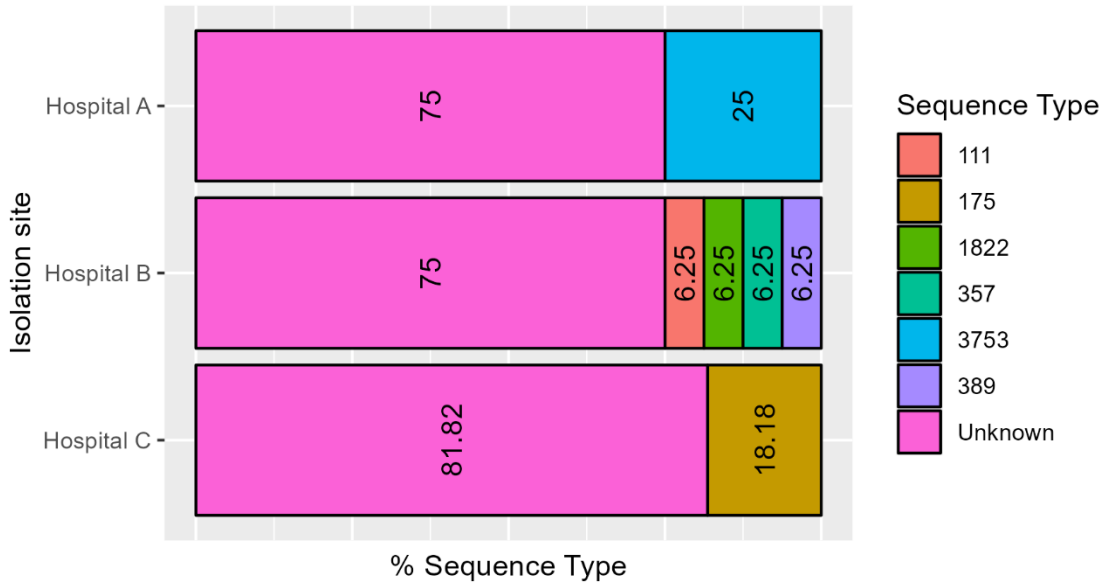
219 **Sequence alignment against the RefGenome PA01** After pre-processing, sequence reads  
220 underwent alignment against PA01 NC\_002516.2 as the reference genome for *P. aeruginosa* using  
221 snippy and subsequently determined the alignment coverage using mosdepth (Pedersen &  
222 Quinlan, 2018), followed by variant calling. Additionally, the predicted effect and annotation of  
223 the called variants were performed using SnpEff (Cingolani et al., 2012). The PA01, as the chosen  
224 reference genome for *P. aeruginosa*, with RefSeq accession NC\_002516.2; the genome size is 6.2  
225 Mbp, total genes of 5,697, protein-coding genes of 5,572 and with GC content of 66.5%, and  
226 available at [https://www.ncbi.nlm.nih.gov/datasets/genome/GCF\\_000006765.1/](https://www.ncbi.nlm.nih.gov/datasets/genome/GCF_000006765.1/).

227 By meeting these quality control standards, the included samples are suitable for  
228 downstream analyses, such as MGEs and resistance gene identification, strain typing, and

229 mutation identification, which will provide valuable insights into the epidemiology and resistance  
230 mechanisms of *P. aeruginosa*.

231 Traditional MLST and cgMLST were used here to investigate the high-risk clones and  
232 genomic epidemiology using the consensus sequence of the 35 CRPA isolates investigated in this  
233 study.

234 **A. Traditional MLST analysis** The traditional MLST analysis using Pasteur nomenclature in  
235 the PubMLST database (Jolley et al., 2018) revealed the highest number of unknown STs (27  
236 singletons) and six different known STs among the 35 sequenced CRPA isolates (FIG 2A). The  
237 international high-risk clone ST111 was represented by one isolate, 6.25% ( $n = 1/16$ ) obtained  
238 from Hospital B. Hospital B was also represented by ST1822 ( $n = 1/16$ , 6.25%), ST357 ( $n = 1/16$ ,  
239 6.25%), ST389 ( $n = 1/16$ , 6.25%), and unknown STs represented the largest ST ( $n = 12/16$ , 75%) of  
240 the CRPA isolates obtained from this isolation site. Moreover, another global high-risk clone,  
241 ST175, was represented by the two isolates, 18.18% ( $n = 2/11$ ) obtained from Hospital C, and  
242 unknown STs represented the largest ST ( $n = 9/11$ , 81.82%) of the CRPA isolates obtained from  
243 this isolation site. Hospital A was represented by ST3753, 25.0% ( $n = 2/8$ ), and predominantly  
244 unknown STs, 75.0% ( $n = 6/8$ ) (FIG 2A).



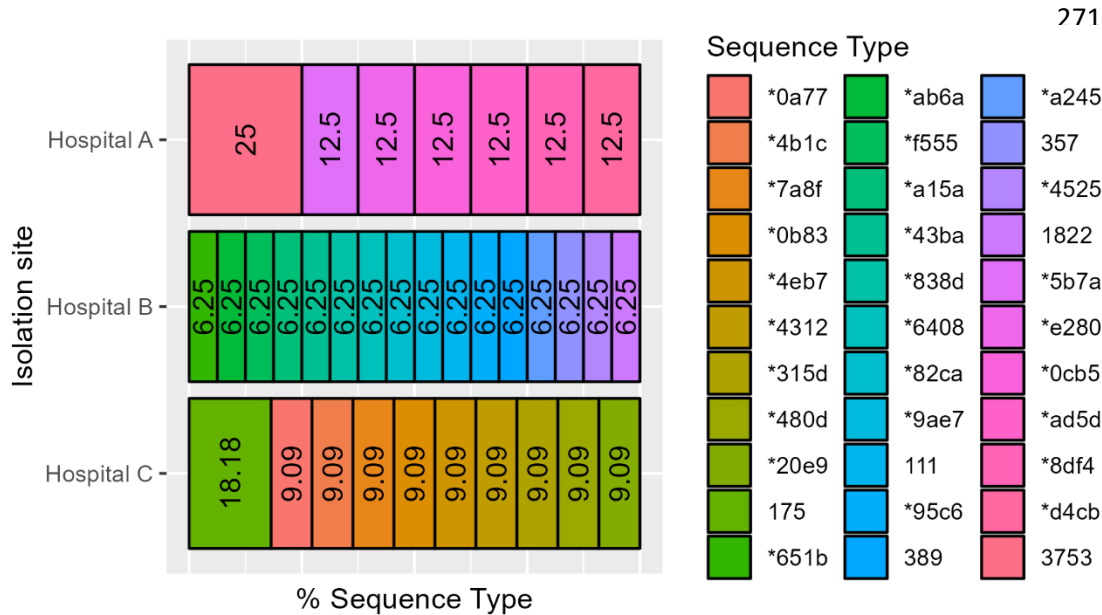
253

254 **FIG 2A.** Distribution and proportion of STs of CRPA isolates per hospital using the Pasteur  
 255 nomenclature in the PubMLST database (Jolley et al., 2018). The number inside the graph denotes  
 256 the percentage of ST identified. The high percentage of unknown ST was identified and  
 257 represented by the CRPA obtained from the three isolation sites. The right side denotes the  
 258 different STs identified.

259 However, the traditional MLST analysis using Pasteur nomenclature in the Pathogenwatch  
 260 database (<https://cgps.gitbook.io/pathogenwatch/technical-descriptions/typing-methods/mlst>)  
 261 revealed that 77.1% (n = 27/35) of CRPA isolates, represented by singleton unknown STs  
 262 possessing novel allele/s represented by CRPA isolate ST with an asterisk \* (FIG 2B And  
 263 Supplemental File 3). An asterisk \* represents novel ST with a specific allele that is unavailable or  
 264 unknown, and ~, an almost similar allele [https://cgps.gitbook.io/pathogenwatch/technical-](https://cgps.gitbook.io/pathogenwatch/technical-descriptions/typing-methods/mlst)  
 265 [descriptions/typing-methods/mlst](https://cgps.gitbook.io/pathogenwatch/technical-descriptions/typing-methods/mlst) (Fig 2B). Hospitals A, B And C were represented by the  
 266 following proportion of unknown/novel STs: 75.0% (n = 6/8), 75.0% (n = 12/16), and 81.82% (n =



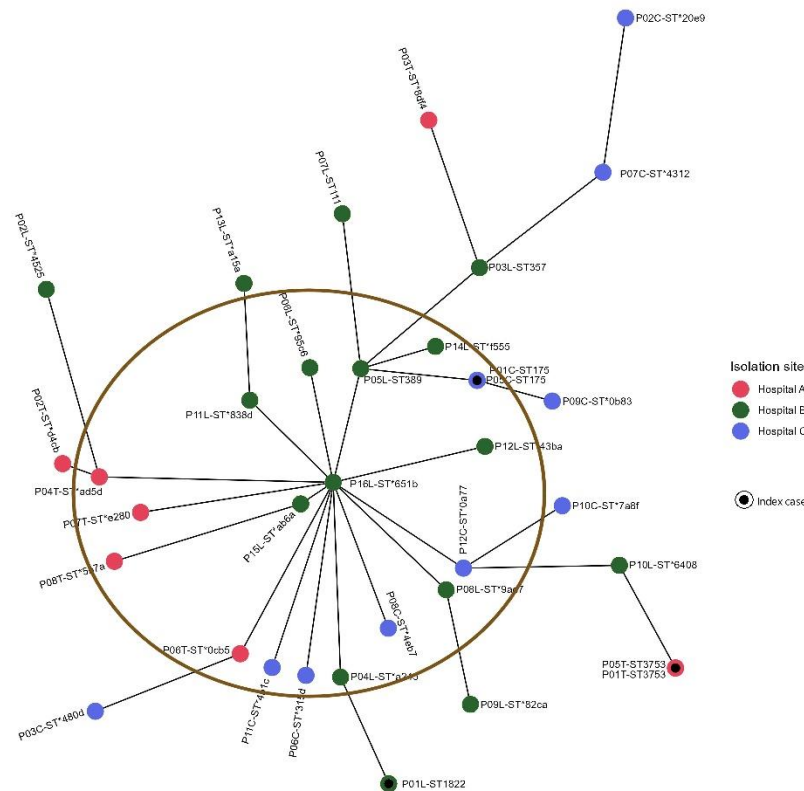
267 9/11), respectively (FIG 2A). In summary, 55.6% (n = 15/27) of singleton new STs possessed new  
 268 alleles, while 25.9% (n = 7/27) possessed multi-allelic (7,321) at *trpE* locus. The multi-allelic CRPA  
 269 isolates were represented by P08L, P11L, P12L, P15L, and P16L CRPA isolates, obtained from  
 270 Hospital B, and P10C and P12C CRPA isolates obtained from Hospital C (Supplemental File 3).



277 **FIG 2B.** Distribution and proportion of sequence type (ST) CRPA isolate per hospital using Pasteur  
 278 nomenclature in the Pathogenwatch database ([https://cgps.gitbook.io/pathogenwatch/](https://cgps.gitbook.io/pathogenwatch/technicaldescriptions/typing-methods/mlst)  
 279 [technicaldescriptions/typing-methods/mlst](https://cgps.gitbook.io/pathogenwatch/technicaldescriptions/typing-methods/mlst)). The right side denotes the different STs identified.  
 280 Asterisk \*represents novel ST with a specific allele that is unavailable or unknown. The number  
 281 inside the graph denotes the percentage of ST identified. Unique or singleton novel ST were  
 282 identified and represented by the CRPA isolates obtained from the three isolation sites.

283 Based on the traditional MLST analysis, the minimum spanning was constructed. The  
 284 following CRPA isolates represented the index case of each isolation site: Hospital A, P01T,  
 285 Hospital B, P01L, and Hospital C, P01C. In this manuscript, the term index case refers to the first

286 CRPA isolates in August 2022, which marked the beginning of the isolate collection from the three  
287 isolation sites. Clustering from the index cases of CRPA infections from each isolation site was not  
288 observed (FIG 3A). The index cases from each isolation site are the following: P01T, P01L and P01C.



289  
290 **FIG 3A.** Genotyping of 35 CRPA isolates based on traditional MLST scheme utilizing Pasteur  
291 nomenclature in the Pathogenwatch and the PubMLST database (Jolley et al., 2018). The circles  
292 are named according to the isolates and colored according to the isolation sites. Each circle  
293 includes the ST. The inner black circles represent the index case. In this manuscript, the index case  
294 is the first case of CRPA infections in August 2022, which marked the beginning of the isolate  
295 collection from the three isolation sites. The circles labeled with more than one sample represent

296 that these samples exhibited identical ST. The major cluster involving the P16L is indicated in a  
297 circle shown in FIG 3A.

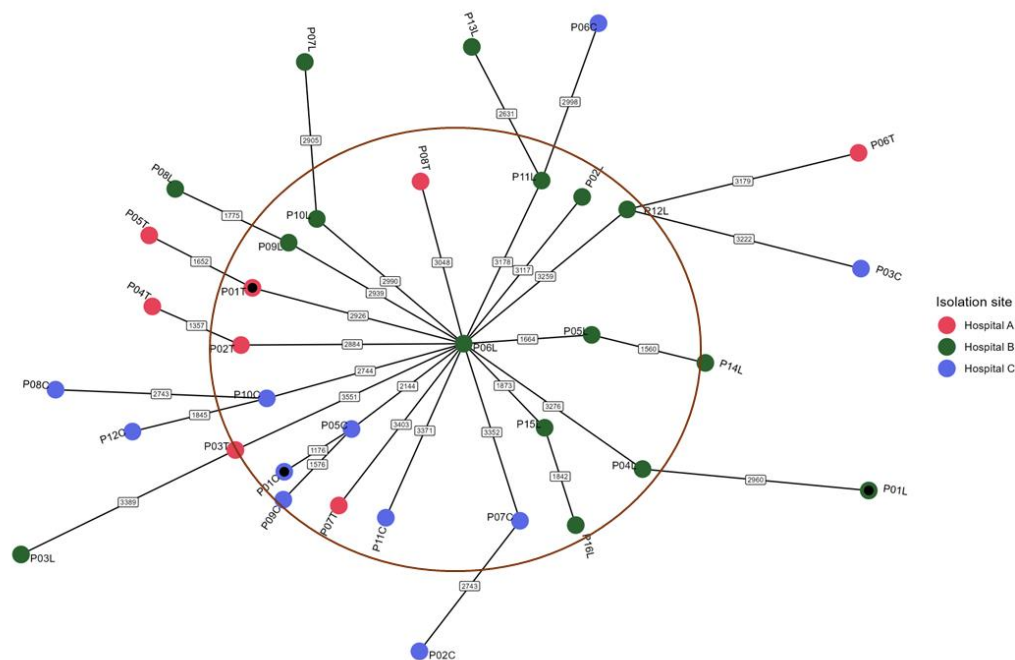
298 The traditional MLST used the schema of seven housekeeping genes (*acsA*, *aroE*, *guaA*,  
299 *mutL*, *nuoD*, *ppsA*, and *trpE*), which led to the typing and identification of two global high-risk  
300 clones: ST111 represented by P07L CRPA isolate obtained from Hospital B, and ST175 represented  
301 by P01C and P05C CRPA isolates obtained from Hospital C. However, one major cluster was  
302 observed involving P16L CRPA isolate represented by ST\*651b, which was a sample obtained from  
303 Hospital B and was linked to 13 isolates obtained from three different hospitals represented by  
304 new STs and one isolate obtained from Hospital B represented by ST389. These CRPA isolates  
305 clustered to P16L, which was an isolate obtained from Hospital B, were observed to have shared  
306 similar alleles in two or more loci. However, the allele profiling is based or limited only to seven  
307 loci or seven *P. aeruginosa* housekeeping genes. Furthermore, the P05C and P01C isolates  
308 obtained from Hospital C were both represented as ST175, having allele differences at locus *trpE*  
309 (19 and 134) when compared to P09C isolate, and allele differences at loci *acsA* (28, 17), *nuoD* (3,  
310 1) and *trpE* (19, 3) when compared to P05L isolate that was obtained from Hospital B. Additionally,  
311 The P01L CRPA isolate, which was the index case of Hospital B, is the single ST1822 identified.  
312 Finally, two CRPA isolates, namely P05T and P01T, which were obtained from Hospital A, were  
313 both represented as ST3753. The genotyping of the 35 CRPA isolates using traditional MLST  
314 unveiled the ubiquity of *P. aeruginosa* and required the application of cgMLST to delineate the  
315 sporadic cases and provide high-resolution genetic distinction among 35 CRPA isolates obtained  
316 from the three isolation sites. The details of the allelic profile between 35 CRPA isolate and the  
317 wild-type PA01 are shown in Supplemental File 3.

318           **B. cgMLST Analysis** We reanalyzed the consensus sequence of 35 CRPA isolates employing  
319 the high-resolution cgMLST schema (Tönnies et al., 2021). The cgMLST analysis for *P. aeruginosa*  
320 is not yet hosted by the Pathogenwatch database (<https://Pathogenwatch/>). Hence, the  
321 cgMLST.org database (de Sales et al., 2020) was used together with the pyMLST tool, which uses  
322 the wild-type PAO1 as the seed genome (Biguenet et al., 2023). This was done due to the highly  
323 ubiquitous characteristics of the 35 CRPA isolates and the involvement of multiple sequence types,  
324 both known and new STs identified by the traditional MLST analysis.

325           Supplemental File four depicts the allelic profile of 35 CRPA isolates based on the cgMLST  
326 schema, which analyses up to 3,867 target genes and up to 1,265,835 alleles to increase the  
327 resolution in gene characterization. The header corresponds to the loci name established by the  
328 cgMLST schema of Tönnies et al., 2021. Each number below each locus corresponds to the allele  
329 profile of each CRPA genome (e.g. WTPA01 has allele 1 at locus PA3729 while P01C has allele 3,868  
330 at the same locus). Whereas, Supplemental File five depicts the number of allele differences or  
331 gene distinctions of each CRPA isolate based on 3,867 target genes, far from seven target genes  
332 utilized in the traditional MLST analysis (e.g. Out of 3,867 target genes used by the cgMLST  
333 schema, WTPA01 is distinct from P01C for up to 2,828 target genes, whereas, P01L is distinct from  
334 P01C for up to 3,631 target genes).

335           A minimum spanning tree was constructed based on the cgMLST schema. Clustering was  
336 not observed from the index cases of CRPA infections, namely P01T, P01L, and P01C isolates, in  
337 three isolation sites, namely Hospital A, B, and C, based on the number of allelic differences  
338 utilizing up to 3,867 target genes and 1,265,835 alleles (FIG 3B). However, a major cluster

339 involving the P06L is indicated in a circle shown in FIG 3B. P06L CRPA isoate was obtained from  
340 Hospital B and linked to 17 CRPA isolates obtained from three isolation sites having the allelic  
341 distinction of 1,664 to 3,551 alleles (FIG 3B). P05L CRPA isolate obtained from the same hospital  
342 (Hospital B) had the nearest genetic distinction when compared with P06L isolate, having 1,664  
343 allele differences, while P03T isolate obtained from Hospital A has the farthest or highest genetic  
344 distinction corresponding to 3,551 allelic differences from P06L isolate (Supplemental File 5 and  
345 FIG 3B). These findings showed that the sequence diversity of *P. aeruginosa* was high among the  
346 35 isolates investigated.



347

348 **FIG 3B.** Genotyping of 35 CRPA isolates based on cgMLST schema (Tönnies et al., 2021)utilizing  
349 pyMLST (Biguenet et al., 2023) and cgmlst.org database (de Sales et al., 2020). The circles are  
350 named according to the isolates and colored according to the isolation sites. The inner black

351 circles represent the index case. The numbers on connecting lines displayed the number of allele  
352 differences between each CRPA isolates investigated. The current cgMLST scheme has no  
353 standardized typing of *P. aeruginosa* (Biguenet et al., 2023). The major cluster involving the P06L  
354 is indicated in a circle shown in FIG 3B.

355 **Presence of metallo-beta-lactamases (MBLs) and extended spectrum beta-lactamase**  
356 **(ESBLs)**

357 The 35 CPRA isolates obtained from three tertiary hospitals in Metro Manila from August  
358 2022 to January 2023 revealed high genetic diversity and exhibited a non-clonal epidemic  
359 structure composed of a huge proportion of rare strains or novel STs (FIG 4). The three different  
360 isolation sites, namely Hospital A, has an 815-bed capacity, Hospital B has a 650-bed capacity, and  
361 Hospital C has a 700-bed capacity.

**Table 3: The phenotypic and the genotypic antimicrobial resistance profile of 35 CRPA isolates obtained from three hospitals.**

Isolate	Room	Specimen Type	Phenotypic AMR											Genotypic AMR													
			Antibiotics											Beta-lactamases											Plasmid Replicons		
														ESBLs			MBLs			OXA							
			IPM	MEM	CAZ	FEP	CZA	TZP	AMK	CIP	COL	ATM	CTX-M-15	TEM-1	KPC-2	VIM-2	NDM-7	OXA-1	OXA-10	OXA-395	OXA-486	OXA-50	OXA-74	OXA-846		OXA-903	IncX3
P01T	Medicine	BAL	R	R	I	I	NT	I	S	I	R	R	A	A	A	A	A	A	A	A	A	A	A	A	A	A	A
P02T	Medicine	Blood	R	R	S	S	NT	S	S	R	NT	NT	A	A	A	A	A	A	A	A	A	A	A	A	A	A	A
P03T	CCU	ETA	R	I	R	S	NT	I	S	S	NT	I	A	A	A	A	A	A	A	A	A	A	A	A	A	A	A
P04T	Medicine	Blood	R	R	S	S	NT	S	S	R	NT	I	A	A	A	A	A	A	A	A	A	A	A	A	A	A	A
P05T	Medicine	BAL	R	R	I	I	NT	I	S	I	NT	R	A	A	A	A	A	A	P	A	A	A	A	A	A	A	A
P06T	Surgery (Pediatric)	BA	R	R	R	R	NT	R	S	S	NT	R	A	A	A	A	A	A	A	A	A	A	A	A	A	A	A
P07T	Medicine	Sputum	R	R	R	R	NT	R	S	S	NT	R	A	A	A	A	A	A	A	A	A	A	A	A	A	A	A
P08T	Medicine	ETA	R	R	S	S	NT	I	S	S	NT	R	A	A	A	A	A	A	A	A	A	A	A	A	A	A	A
P01L	Medicine	ETA	R	R	S	S	NT	I	S	S	NT	I	A	A	A	A	A	A	A	A	A	A	P		A	A	
P02L	Medicine	Blood	R	I	S	S	NT	S	S	S	NT	S	A	A	A	A	A	A	A	A	A	A	A	P	A	A	
P03L	ICU5	Blood	R	R	R	R	NT	I	I	R	NT	S	A	A	A	A	A	A	A	A	A	A	A	A	A	A	A
P04L	Medicine	Sputum	R	R	R	R	NT	R	S	S	NT	S	A	A	A	A	A	A	A	A	A	A	P	A	A	A	
P05L	ICU3	ETA	R	R	R	R	NT	R	R	R	NT	R	A	A	P	P	A	A	A	A	A	P	A	A	A	P	

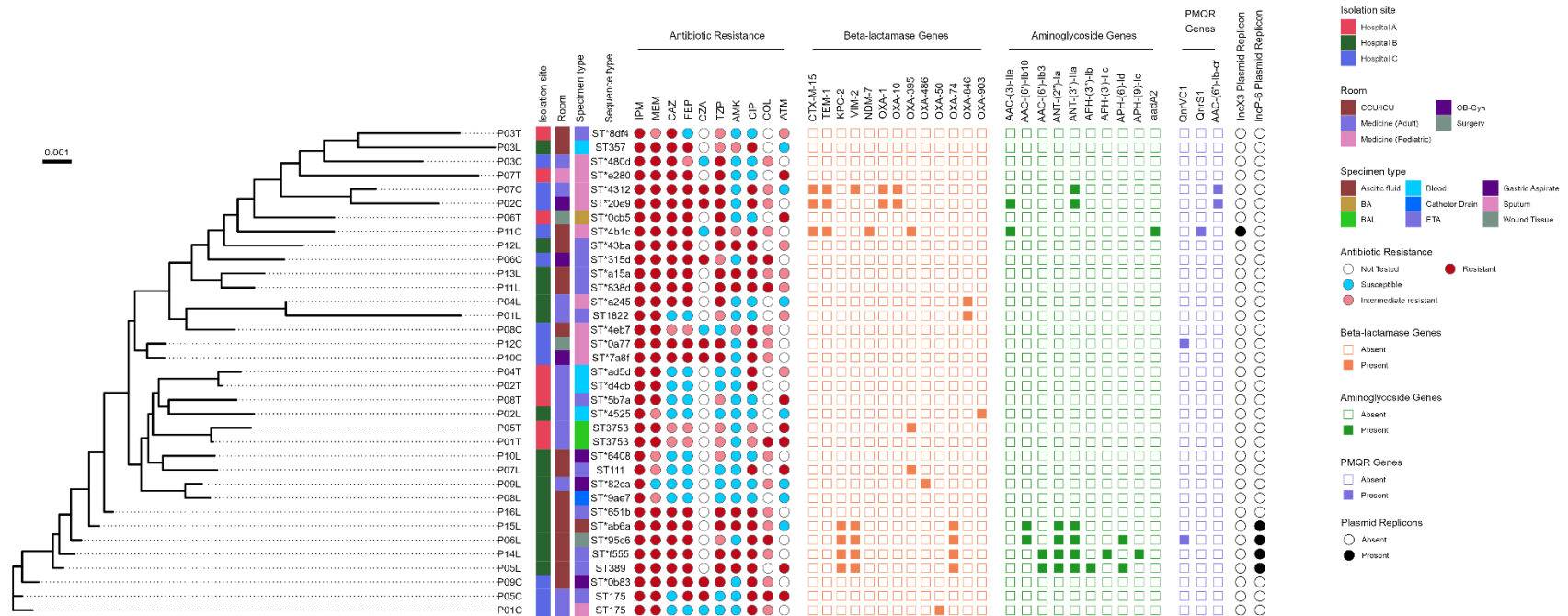
P06L	ICU3	Wound Tissue	R	R	R	R	NT	I	S	R	R	NT	A	A	P	P	A	A	A	A	A	A	P	A	A	A	P
P07L	CCU	ETA	R	I	S	S	NT	S	S	R	NT	R	A	A	A	A	A	A	A	P	A	A	A	A	A	A	A
P08L	ICU6	Catheter Drain	R	I	S	S	NT	S	S	S	NT	S	A	A	A	A	A	A	A	A	A	A	A	A	A	A	A
P09L	Medicine	Gastric Aspirate	R	S	S	S	NT	S	S	S	I	S	A	A	A	A	A	A	A	A	P	A	A	A	A	A	A
P10L	ICU6	Gastric Aspirate	R	I	S	S	NT	I	S	S	I	NT	A	A	A	A	A	A	A	A	A	A	A	A	A	A	A
P11L	ICU6	ETA	R	R	R	R	NT	R	R	R	R	I	A	A	A	A	A	A	A	A	A	A	A	A	A	A	A
P12L	ICU5	ETA	R	R	R	R	NT	R	R	R	NT	I	A	A	A	A	A	A	A	A	A	A	A	A	A	A	A
P13L	ICU6	ETA	R	R	R	R	NT	R	R	R	I	I	A	A	A	A	A	A	A	A	A	A	A	A	A	A	A
P14L	ICU5	ETA	R	R	R	R	NT	R	R	R	I	NT	A	A	P	P	A	A	A	A	A	A	P	A	A	A	P
P15L	ICU5	Ascitic fluid	R	R	R	R	NT	R	R	R	I	S	A	A	P	P	A	A	A	A	A	A	P	A	A	A	P
P16L	ICU5	ETA	R	R	R	R	NT	R	R	R	I	NT	A	A	A	A	A	A	A	A	A	A	A	A	A	A	A
P01C	Medicine	Sputum	R	R	S	S	S	S	S	R	I	NT	A	A	A	A	A	A	A	A	P	A	A	A	A	A	A
P02C	OB-Gyn	Sputum	R	R	R	R	R	R	S	R	I	NT	P	P	A	A	A	P	P	A	A	A	A	A	A	A	A
P03C	Medicine	Sputum	R	R	R	I	S	R	S	S	I	NT	A	A	A	A	A	A	A	A	A	A	A	A	A	A	A
P05C	Medicine	ETA	R	R	S	R	R	S	S	R	R	R	A	A	A	A	A	A	A	A	A	A	A	A	A	A	A
P06C	OB-Gyn	ETA	R	R	R	R	R	I	S	R	R	NT	A	A	A	A	A	A	A	A	A	A	A	A	A	A	A
P07C	Medicine	Sputum	R	R	R	R	R	R	S	R	I	S	P	P	A	P	A	P	P	A	A	A	A	A	A	A	A
P08C	ICU	Sputum	R	R	I	I	S	S	I	R	I	NT	A	A	A	A	A	A	A	A	A	A	A	A	A	A	A
P09C	ICU	Gastric Aspirate	R	R	R	R	R	R	S	R	I	NT	A	A	A	A	A	A	A	A	A	A	A	A	A	A	A
P10C	OB-Gyn	Sputum	R	R	R	R	R	R	S	R	I	NT	A	A	A	A	A	A	A	A	A	A	A	A	A	A	A
P11C	ICU	Sputum	R	R	R	R	S	R	I	R	I	NT	P	P	A	A	P	A	A	P	A	A	A	A	A	P	A



P12C Surgery Sputum R R R R R R S R I NT A A P P A A A A A P A A A A

CRPA, carbapenem-resistant *P. aeruginosa*; ST, sequence type; ICU, intensive care unit; CCU, critical care unit; OB-Gyn, obstetrics and gynecology; BAL, bronchoalveolar lavage; BA, bone aspirate; ETA, endotracheal aspirate; ESBLs, extended-spectrum beta-lactamases; MBLs, metallo-beta-lactamases; OXA, oxacillinase; PMQR, plasmid-mediated quinolone resistance; MIC, minimum inhibitory concentration; IPM, imipenem; MEM, meropenem; CAZ, ceftazidime; FEP, cefepime; CZA, ceftazidime-avibactam; TZP, piperacillin-tazobactam; AMK, amikacin; CIP, ciprofloxacin; COL, colistin; ATM, aztreonam; and AMR, antimicrobial resistance.

P, present; A, absent; R, resistant; S, susceptible; I, intermediate; NT, not tested; \*Represent novel ST with a specific allele that is unavailable or unknown



362

363 **FIG 4.** Phylogenetic SNP analysis of 35 CRPA obtained from three hospitals (Hospitals A, B And C) in Metro Manila, Philippines,  
 364 from August 2022 to January 2023, the corresponding resistance profile, presence of AMR determinants, and specimen Genes type. SNP  
 365 analysis was performed using the wild-type (WT) PAO1 (accession number: NC\_002516.2) as the reference genome. The scale bar

366 shows the genetic distinction between each CRPA isolates. Vertical columns demonstrate (1) isolation site, (2) patient's room, (3)  
367 specimen type, (4) sequence type, (5) resistance phenotype: resistant (red filled circle), intermediate resistant (pink filled circle),  
368 susceptible (blue filled circle), Not Tested (empty circle), (6) resistance genotype including beta-lactamase genes: present (orange filled  
369 squares) and absent (empty squares), (7) aminoglycoside conferring resistant genes: present (green filled squares) and absent empty  
370 squares), (8) plasmid-mediated quinolone resistance (PMQR): presence (purple filled square) and absent (empty square) of acquired  
371 resistance genes, (9) predominant plasmid replicon types: presence (black filled circle) and absent (empty circle). IPM, imipenem;  
372 MEM, meropenem; CAZ, ceftazidime; FEP, cefepime; CZA, ceftazidime-avibactam; TZP, piperacillin-tazobactam; AMK, amikacin; CIP,  
373 ciprofloxacin; COL, colistin; ICU, intensive care unit; CCU, critical care unit; OB-Gyn, obstetrics and gynecology; BAL, bronchoalveolar  
374 lavage; BA, bone aspirate; ETA, endotracheal aspirate; and PMQR, plasmid-mediated quinolone resistance. Detailed results are in  
375 Supplemental File 7.

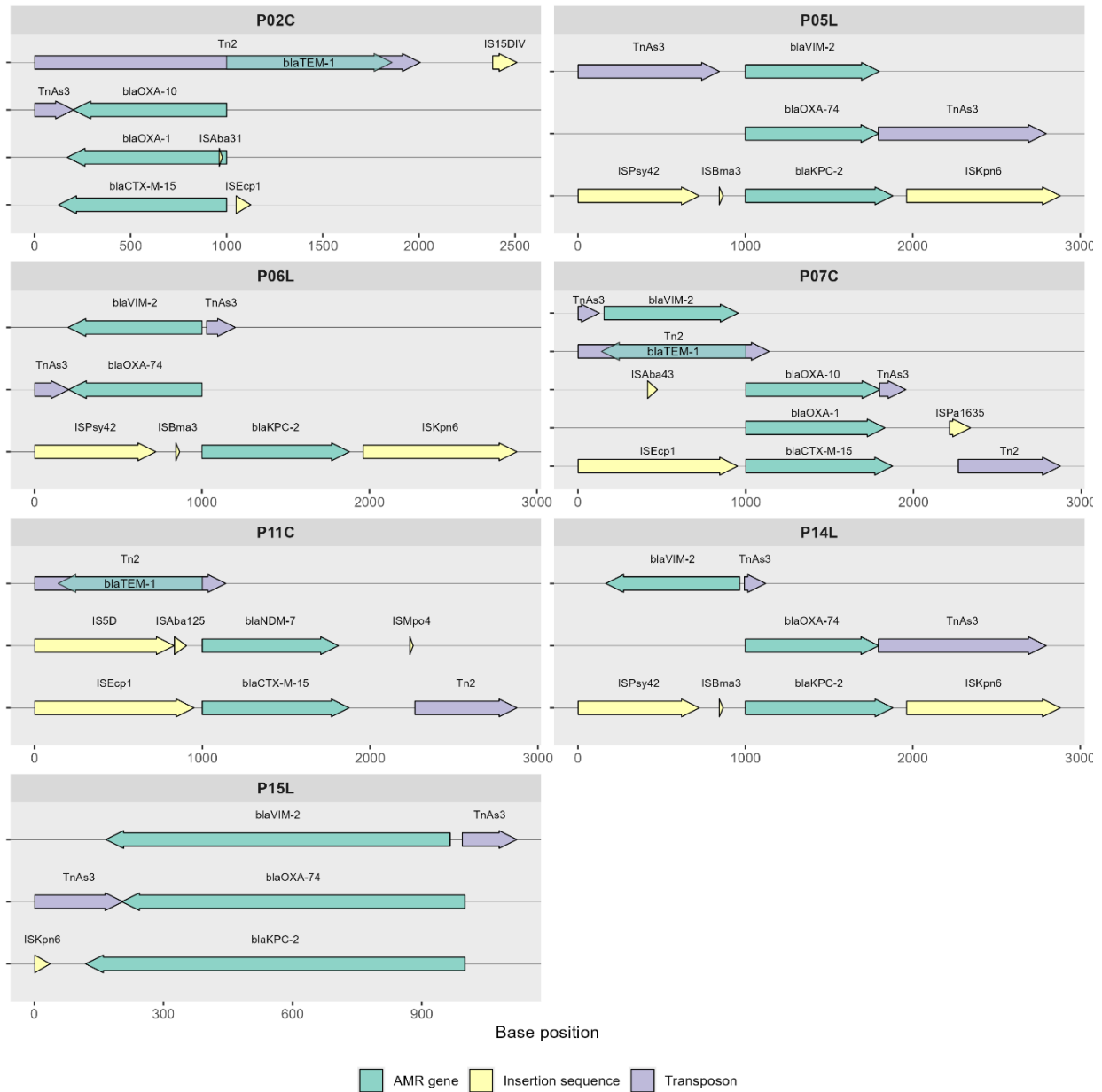


385 P15L CRPA isolates from ascitic fluid of 66/M patient (Table 3, FIG 4, 5, and 6). The investigations  
386 also revealed MBL VIM-2 co-produced with ESBLs TEM-1 and CTX-M-15, in P07C CRPA isolate  
387 obtained from the sputum of 70/F patient admitted to the medicine unit of Hospital C and was  
388 diagnosed as having community-acquired pneumonia. The 70/F patient was given IPM and TZP  
389 as part of her medication. The phenotypic AMR revealed resistance against IPM, MEM, CAZ, FEP,  
390 CZA, TZP, CIP and intermediate against COL. Interestingly, the IncX3 plasmid replicon type was  
391 identified from the P11C CRPA isolate that co-produced MBL NDM-7 and ESBLs TEM-1 and CTX-  
392 M-15. In addition, P11C CRPA isolate was obtained from the sputum of 25/M with meningitis  
393 admitted in the ICU of Hospital C. The 25/M patient was given the following medications: TZP,  
394 CRO, and FEP. The phenotypic AMR showed resistance against IPM, MEM, CAZ, FEP, TZP, CIP and  
395 intermediate against COL (Table 3, FIG 4, and 5).

396 Carbapenemases, and ESBL genes are known to be distributed by plasmids and other  
397 MGEs such as insertion sequence and transposon and speed up the spread and acquisition of  
398 ARGs (Manohar et al., 2021; Ramirez et al., 2014; Reul and et al., 2015).

399 **Presence of Insertion Sequence (IS) and Transposon** Small mobile genetic elements  
400 called IS and composite transposons are essential for the transfer of antibiotic resistance genes  
401 (ARGs) among bacterial populations (Rice, 2008). Transposition mechanisms allow IS to migrate  
402 within a single cell along with resistance genes associated with them (Llaca-Díaz et al., 2013).  
403 Composite transposons, defined as areas enclosed by two identical or similar IS copies, have the  
404 ability to transport resistance genes and facilitate their transfer between distinct DNA molecules  
405 (Siguier et al., 2015). The presence of drug resistance against multiple antibiotics, the potential  
406 high-risk clones identified and the presence of ARGs, specifically carbapenemases and

407 cephalosporinases that are flanked by MGEs pose a potential threat in healthcare settings  
 408 (Partridge et al., 2018). The spread of genes that confer antibiotic resistance in bacteria is  
 409 facilitated by these MGEs (Yoon & Jeong, 2021). A schematic diagram of representative ARGs and  
 410 MGEs is shown in Figure 6.



411 **FIG 6.** Schematic diagram of representative ARGs flanked by the MGEs in seven CRPA isolates.

412 The KPC-2 gene, in P05L, P06L, P14L, and P15L CRPA isolates are flanked by ISKpn6,  
413 ISPay42, and ISBma3, while VIM-2 and OXA-74 genes in the same isolates are flanked by TnAs3.  
414 The NDM-7 gene in CRPA isolate P11C is flanked by IS5D, ISAba125, and ISMpo4, whereas TEM-  
415 1 gene in CRPA isolates P02C, P07C, and P11C is flanked by ISEc63, Tn2, Tn5393, and IS15DIV, and  
416 CTX-M-15 in the same CRPA isolates is flanked by ISEcp1, and Tn2. The OXA-10 in P02C and P07C  
417 isolates are flanked by TnAs3 and ISAba43 (FIG 6).

418 **Presence of IncX3 and IncP-6 Plasmid Replicon Types** Plasmids have the ability to transfer  
419 AMR genes to other bacteria, which can speed up the spread and evolution of bacterial  
420 pathogens (Teixeira et al., 2023). Antimicrobial resistance genes in *P. aeruginosa* and other Gram-  
421 negative bacteria are largely transferred by the IncP-6 and IncX3 plasmids. While the IncX3  
422 plasmids have a narrow host range but are highly stable and have great conjugation ability,  
423 making them important targets for research and surveillance in the fight against antimicrobial  
424 resistance (Guo et al., 2022), the IncP-6 plasmids have a broad host range and can transfer and  
425 replicate in most Gram-negative bacteria (Dai et al., 2016). Plasmids within the 35 sequenced  
426 CRPA isolates were differentiated based on plasmid replicon types. The IncX3 (2.9%, n = 1/35)  
427 and IncP-6 (11.4%, n = 4/35) accounted for the prevalent plasmid replicon types detected in the  
428 CRPA isolates. P11C CRPA isolate obtained from Hospital C was positive for IncX3, whereas P05L,  
429 P06L, P14L, and P15L CRPA isolates obtained exclusively from Hospital B were positive for IncP-6  
430 (Table 3 and FIG 4). The IncX3 plasmid replicon is the most common subgroup found to harbor  
431 NDM and KPC (Guo et al., 2022; Liakopoulos et al., 2018), contrary to the single isolate found  
432 positive for IncX3 plasmid replicon in our study.

433           **Presence of plasmid-mediated quinolone resistance (PMQR) genes** Due to their ability  
434 to transmit horizontally and decreased susceptibility to fluoroquinolones, PMQR genes are  
435 important in conferring *P. aeruginosa* with resistance to these antibiotics. The fluoroquinolones  
436 ciprofloxacin and norfloxacin are less effective when modified by *aac(6′)-Ib-cr*, whereas the Qnr  
437 genes encode proteins that protect DNA gyrase and topoisomerase (Venkataramana et al., 2022).

438           In this study, the PMQR genes were identified in 14.3% (n = 5/35) of the CRPA isolates  
439 investigated. The QnrS1 (2.9%, n = 1/35) was identified from P11C CRPA isolate obtained from  
440 Hospital C, while the QnrVC1 was identified from (5.7%, n = 2/35) P06L CRPA isolate obtained  
441 from Hospital B and P12C isolate obtained from Hospital C. Moreover, the ciprofloxacin and  
442 aminoglycoside modifying enzyme (*aac(6′)-Ib-cr*) were identified from P02C and P07C isolates  
443 obtained from Hospital C, accounting to 2.9%, (n = 1/35). Of the 62.9% (n = 22/35) CRPA isolates  
444 shown to be phenotypically CIP resistant, only 22.7% (n = 5/22) harbored the PMQR genes (Table  
445 3 and FIG 4 and 5). Additionally, this study looked at mutations in *gyrA* and *parE* that could also  
446 contribute to the CIP resistance (Supplemental File 6B).

447           **The presence of mutation in the Quinolone Resistance-Determining regions (QRDR) -**  
448 ***gyrA* and *parE* genes** Resistant to CIP in *P. aeruginosa* has been associated with mutations in the  
449 QRDR of the *gyrA* and *parE* genes. It has been demonstrated that high-level resistance to CIP in  
450 *P. aeruginosa* isolates is encoded by mutations in both the *gyrA* and *parE* genes. Furthermore,  
451 mutations in the *parE* gene, specifically when they coexist with mutations in *gyrA* or *parC*, are a  
452 contributing factor to high-level CIP resistance (Arabameri et al., 2021). The combination of these  
453 mutations results in structural changes to DNA gyrase, which lowers the enzyme's susceptibility  
454 to antibiotics and promotes drug resistance (Arabameri et al., 2021).

455 SNPs *T83I* was identified in the *gyrA* gene A473V was identified in the *parE* gene in 31.4%  
456 ( $n = 11/35$ ) and 5.7% ( $n = 2/35$ ) CRPA isolates investigated. T83I and A473V mutations have been  
457 known to cause resistance to fluoroquinolones. The CRPA isolates that harbored *gyrA* mutations  
458 (T83I) are isolates: P02T, P04T, P05L, P06L, P14L, P15L, P01C, P02C, P05C, P07C and P11C, while  
459 P02T and P04T isolates obtained from Hospital A harbored *parE* mutations (A473V). All CRPA  
460 isolates that exhibited both or either of the *parE* and *GyrA* mutations and at least one of the  
461 PMQR genes demonstrated resistance against CIP. However, 45.4% ( $n = 10/22$ ) of CRPA isolates  
462 that displayed phenotypic resistance against CIP did not possess *gyrA* and *parE* mutations,  
463 including PMQR gene expression ( Supplemental File 6B and 7).

464 **Presence of aminoglycoside conferring resistance genes** Genes mediating  
465 aminoglycoside resistance were also identified from 20.0% ( $n = 7/35$ ) of CRPA isolates  
466 investigated exclusively recovered from Hospital B and C. ANT-(3'')-IIa has the highest proportion  
467 among the identified aminoglycoside conferring resistance genes, 17.1% ( $n = 6/35$ ). ANT(2'')-Ia,  
468 APH(6)-Id, APH(3'')-Ib, APH(3')-IIc, AAC(3)-IIe, AAC(6')-Ib10, And AAC(6')-Ib3, were also  
469 detected from both Hospital B and C isolates and each gene accounting to 5.7% ( $n = 2/35$ ). Also  
470 present are APH(3'')-Ib, APH(3')-IIc, APH(9)-Ic, and *aadA2* each gene accounting to 2.9% ( $n =$   
471  $1/35$ ). Of these, 43.0% ( $n = 3/7$ ) were phenotypically expressed. Moreover, the resistance  
472 determinants for the observed AMK resistance were not detected in 57.1% ( $n = 4/7$ ) of the CRPA  
473 isolates investigated (FIG 4 and 5 and Supplemental File 7).

474 **Incidence of OprD mutations** Resistance in CRPA isolates that do not produce  
475 carbapenemases could be mediated by a loss of porin D (OprD) and/or overexpression of efflux  
476 pumps (such as MexAB-OprM) (Amsalu et al., 2020; Arzanlou et al., 2017; Gashaw et al., 2024;



477 Nieto-Saucedo et al., 2023). OprD is an outer membrane porin in *P. aeruginosa* that facilitates  
478 the uptake of basic amino acids and imipenem (Alcock et al., 2023). However, mutations in the  
479 OprD that will correlate with carbapenem resistance, such as Gln143X, were not detected in all  
480 CRPA isolates investigated (Supplemental File 6A).

## 481 **DISCUSSION**

482 *P. aeruginosa* that produce beta-lactamases specifically carbapenemases is a global  
483 problem. The assessment was performed utilizing an in-depth analysis of the whole genome  
484 sequence of 35 non-duplicate CRPA isolates obtained from patients admitted from three hospitals  
485 collected over the period of six months. Despite measures implemented in the isolation sites to  
486 combat AMR through antimicrobial stewardship, surveillance, and understanding of AMR, the  
487 prevalence of AMR remains a significant challenge in patient care, particularly in Hospitals B and  
488 C, with a high proportion of CRPA isolates carrying acquired AMR genes, and a moderate to high  
489 level of resistance against the last line of antibiotics. Four of the so-called “big five  
490 carbapenemases,” namely NDM, VIM, KPC, And OXA, were identified in this study.

491 This article first reported on the co-production of KPC-2, VIM-2, and OXA-74 represented by  
492 potential high-risk clones *P. aeruginosa* ST389, ST\*95c6, ST\*f555, and ST\*ab6a, and in the  
493 Philippines. In hospital settings, epidemic outbreaks of *P. aeruginosa* MDR/XDR high-risk clones  
494 are usually associated with ST111 And ST175 (Cabot et al., 2012; Horcajada et al., 2019; Kocsis et  
495 al., 2021; Oliver et al., 2015); however, this was not the outcome in our investigation of the 35  
496 CRPA isolates obtained from the three hospitals. Hospitals B and C displayed a high proportion of  
497 CRPA isolates carrying acquired AMR genes, specifically carbapenemases such as VIM-2 and co-  
498 produced with KPC-2 and OXA-74, whereas Hospital C had a large proportion of CRPA isolates

499 carrying ESBLs such as CTX-M-15 and TEM-1. In contrast, in the Department of Health's (DOH)  
500 Antimicrobial Resistance Surveillance Reference Laboratory (ARSRL) annual report, VIM, NDM,  
501 and ESBLs were not observed; instead IMP-4 was detected in one *P. aeruginosa* isolate obtained  
502 from an in-line catheter (Department of Health - RITM, 2022). In addition to the rapid  
503 dissemination and acquisition through horizontal gene transfer, NDM, VIM, KPC, and some OXA  
504 variants are plasmid-borne carbapenemase-encoding genes that present challenges in the  
505 treatment of bacterial infections. These genes have the capacity to hydrolyze nearly all beta-  
506 lactam antibiotics, including carbapenems (Leungtongkam et al., 2018; Manohar et al., 2021;  
507 Murray et al., 2022; Reyes et al., 2023; US Department of Health and Human Services; CDC.,  
508 2019).

509 In our report, KPC-2, VIM-2, OXA-74, NDM-7 and ESBLs were flanked by MGEs that will  
510 add burden in the mitigation of spread and acquisition through horizontal gene transfer. In  
511 addition, one of five (1/5) CRPA isolates that were identified as positive for KPC-2 and VIM-2 was  
512 found resistant to CZA. Further surveillance and investigation are suggested since it was studied  
513 that when it comes to isolates that produce KPC, CZA is highly active while remaining inactive  
514 against pathogens that produce MBLs (Horcajada et al., 2019). However, the same isolate was  
515 also positive for MBL VIM-2 that added burden to treatment management. A study reported KPC-  
516 2 genes located between *ISKpn6*-like and *ISKpn8*-like MGEs (Hu et al., 2021). However, in our  
517 study, KPC-2 is located between *ISPsy42* and *ISKpn6*, VIM-2 is flanked by *TnAs3*, while NDM-7 is  
518 surrounded by *IS5D* and *ISMpo4*. These can facilitate the movement of resistance genes between  
519 different DNA molecules (Rice, 2008).

520 A multinational study identified the differences in the prevalence and types of  
521 carbapenemases harbored by CRPA across different regions and found that carbapenemases  
522 were rare in CRPA isolates in the U.S. but common in isolates in other regions such as South And  
523 Central America, particularly KPC-2 and VIM-2 (Reyes et al., 2023). Another study reported that  
524 CRPA ranges from 10 to 30% in countries such as Australia and North America to more than 50%  
525 in Saudi Arabia, Brazil, Iran, Poland, Peru, Greece, Russia, and Costa Rica, where resistance rates  
526 are high enough to be concerning for public health (Halat & Moubareck, 2022; Hong et al.,  
527 2015b). Reports confirmed the geographic differences in carbapenemase genotypes, such as the  
528 U.S. epidemic was linked to KPC (class A in the Ambler classification) (Bush & Jacoby, 2010), the  
529 European epidemic to VIM (class B) and OXA-48-like (class D), and the Asian epidemic to NDM  
530 and IMP (class B) (Suzuki et al., 2019). The NDM type is epidemic in clinical settings in the  
531 Philippines. In fact, a study on beta-lactam-resistant Gram-negative bacilli clinical isolates in a  
532 Philippine tertiary care hospital co-produced NDM-1, TEM-5, CTX-M-117, IMP-4, OXA-1, and OXA-  
533 72 in one *P. aeruginosa* isolate, while another *P. aeruginosa* isolate co-harboring NDM-1, IMP-1,  
534 OXA-1, and OXA-72 (Abordo et al., 2023). Similarly, we also identified in our study, P11C a CRPA  
535 isolate carrying NDM-7 that co-produced CTX-M-15, TEM-2, and OXA-395 and is represented by  
536 novel ST\*4b1c. This isolate was positive for the IncX3 type plasmid replicon and the ARGs were  
537 surrounded and flanked by MGEs making the P11C CRPAS a potential high-risk clone. The P11C  
538 CRPA isolate from Hospital C was obtained from the sputum of a 26-year-old male ICU patient  
539 who was treated with piperacillin-tazobactam, ceftriaxone, and cefepime. Furthermore, another  
540 investigation underscored the global clinical implications of CRPA, noting that its genetic and  
541 epidemiological attributes are poorly understood (Chen et al., 2018), and there is a need for

542 further research to understand their genetic and epidemiological attributes. In this article, we  
543 elucidated the genetic and epidemiologic characteristics of the 35 CRPA strains, specifically the  
544 co-production of VIM-2 and KPC-2 in P05L, P06L, P14L, and P15L CRPA strains obtained from ICU  
545 patients in Hospital B. These CRPA strains are both IPM and MEM-resistant. In other published  
546 studies, ST175 is frequently observed to produce VIM-2, whereas ST111 can produce KPC-2  
547 carbapenemase (Oliver et al., 2015); however, this was not the case in our investigation because  
548 ST175 and ST111 did not contain any MBLs and ESBLs, instead, the novel STs were the clones  
549 responsible for the co-production of VIM-2, KPC-2, and OXA-74. The genetic heterogeneity of 35  
550 CRPA isolates investigated in this study contrasts with the clonal dominance of high-risk clones in  
551 other studies (Cabot et al., 2012; Oliver et al., 2015; Pollini et al., 2013). However, the limited  
552 sample size and short duration of sample collection can be a factor.

553 The 35 CPRA isolates obtained from three tertiary hospitals in Metro Manila from August  
554 2022 to January 2023 exhibited high phenotypic and genetic diversity (FIG 6). The presence of  
555 multiple drug resistance CRPA strains and multiple antibiotic-resistance genes that are flanked by  
556 mobile genetic elements (MGE) (FIG 6) pose a potential threat in healthcare settings. A more  
557 stringent protocol needs to be in place, particularly for the sites that showed a high proportion  
558 of AMR and a high level of resistance against the last line of treatment.

## 559 **CONCLUSIONS**

560 This research presented an insight into the current genetic characteristics of 35 CRPA  
561 isolates obtained from August 2022 to January 2023 from the three tertiary hospitals in Metro  
562 Manila, Philippines, highlighting the first identification of the CRPA harboring plasmid-borne VIM-  
563 2, and co-produced with KPC-2, And OXA-74 flanked by MGEs. Additionally, the persistent

564 identification of NDM in the Philippine's clinical setting remains a major global public health  
565 concern. Control strategies should be strongly implemented, along with discovering inhibitors  
566 targeting carbapenemase-producing *P. aeruginosa*. The genetic and epidemiologic  
567 characterization of clinical CRPA isolates, in addition to surveillance, are of the utmost  
568 importance in order to enhance the outcomes of infection control measures designed to mitigate  
569 the incidence and spread of CRPA infection by providing current information.

570

## 571 **MATERIALS AND METHODS**

572 **Isolation and Collection of *P. aeruginosa*.** From August 2022 to January 2023, 40 CRPA  
573 isolates were obtained from the three tertiary hospitals in Metro Manila, Philippines. The  
574 Vitek®2 system (bioMérieux) and/or BD Phoenix™ M50 instrument was used for species  
575 identification, and the strains that showed imipenem and/or meropenem resistance with MIC  
576 breakpoints of  $\geq 8.0$  mg/L as the result of antibiotic susceptibility using the Vitek®2 system  
577 (bioMérieux) and /or BD Phoenix™ M50 instrument, were collected. *P. aeruginosa* Strains that  
578 demonstrated MIC breakpoints of  $\geq 8.0$  mg/L to carbapenem (imipenem and or meropenem)  
579 were designated as CRPA and were included in the study provided that the source CRPA isolates  
580 are the following: lower respiratory tract, wound discharge, blood, and other sterile body fluids.  
581 Other sources, such as stool, throat, And nasal swabs, were excluded from the collection. Out of  
582 40 CRPA isolates, 36 were successfully sub-cultured, and pure colonies were isolated for DNA  
583 extraction. Thirty-six CRPA strains were subsequently subjected to WGS, but one sample was  
584 removed due to low-quality sequence reads, and 35 were included in downstream analysis.

585           **Antimicrobial susceptibility test.** The antibiotic susceptibility test was performed using  
586 the GN N261 CARD of Vitek®2 system (bioMérieux) for the following Antibiotics: IPM, MEM, FEP,  
587 CAZ, CIP, TZP, And AMK. In addition, the MIC for COL and CZA was determined using the  
588 EURGNCOL plate of the Sensititre system™ (Thermo Fisher Scientific™) via the commercial broth  
589 microdilution kit And the standard broth microdilution (BMD), performed according to the CLSI  
590 CLSI M100 ED32:2022 guideline (CLSI, 2022). Kirby Bauer technique for the determination of  
591 antimicrobial resistance against ATM was used. The Antimicrobial susceptibility of the strains was  
592 determined according to the guidelines And breakpoint of the Clinical Laboratory Standard  
593 Institute (CLSI) M100-ED32:2022, with *P. aeruginosa* ATCC 27853 used as the quality control  
594 strains (CLSI, 2022).

595           **DNA extraction** DNA was extracted using DNeasy® UltracleAN® Microbial Kit (Qiagen™,  
596 Germantown, MD, USA) from cells grown overnight at 37 °C in Tryptic Soy Broth (TSB) following  
597 the manufacturer's protocol with slight modifications in the speed and time set for  
598 centrifugation. DNA concentrations were measured on Qubit using Invitrogen Qubit™ 4  
599 Fluorometer. For the quality of the DNA, it was performed using FLUOstar® Omega.

600           **Whole-genome sequencing and analysis.** The DNA extracts of 36 CRPA clinical isolates  
601 underwent sequencing in SA Pathology (Adelaide, Australia) using the Illumina NextSeq 550  
602 platform employing 150-base pair-end reads sequencing. The Amplicon Library was prepared  
603 using the Nextera XT DNA Library Preparation kit (Illumina Inc., USA) following the manufacturer's  
604 protocol.

605           **Data Processing and Analytics** The raw sequence data were uploaded onto an in-house  
606 bioinformatics pipeline, called EpiTomas v1.0.0 (<https://github.com/abulenciamiguel/EpiTomas>).

607 EpiTomas offers an automated workflow for quality control evaluation, reference-based  
608 assembly, de novo assembly, and genome characterization (FIG 7).

609 **Raw read quality control** The raw sequences underwent read trimming and quality  
610 assessment using Fastp (Chen et al., 2018). Thirty-five (35) CRPA isolates met the quality control  
611 standards, having sequence read with a Phred score of 30 (Q30), ensuring a high level of accuracy,  
612 and 80% of the reads that passed the filter belonged to *Pseudomonas* genus using Kraken2  
613 Minikraken (Wood et al., 2019) database, with the number of reads providing at least 30x read  
614 coverage, ensuring comprehensive coverage of the genome and the genome must have a GC  
615 content ranging from 65 to 67%.

616 **Sequence alignment against PA01 RefGenome and variant calling** After pre-processing,  
617 reads underwent alignment against PA01 NC\_002516.2 as the reference genome using snippy,  
618 and subsequently determined the alignment coverage using mosdepth (Pedersen & Quinlan,  
619 2018). Additionally, the predicted effect and annotation of the called variants were performed  
620 using SnpEff (Cingolani et al., 2012). The PA01, as the chosen reference genome, was completely  
621 sequenced by the year 2000, and its genome is relatively large (5.5–7 Mbp) in comparison to  
622 other bacteria that have been sequenced (Stover et al., 2000). Furthermore, plasmid contigs of  
623 the 35 CRPA strains were assembled from the trimmed fastq files using plasmidSPAdes (Antipov  
624 et al., 2016).

625 **AMR genes And flanking mobile genetic elements detection** The assembled genomes  
626 and the plasmid contigs undergo further analysis, such as identification and characterization of  
627 AMR genes using the Resistance Gene Identifier (RGI) with the Comprehensive Antibiotic  
628 Resistance Database (CARD) as a reference (Alcock et al., 2020). Mobile genetic elements

629 flanking 1,000 bp up- and downstream the selected seven AMR genes (i.e., *bla*VIM-2, *bla*KPC-2,  
630 *bla*NDM-7, *bla*TEM-1, *bla*CTX-M-15, *bla*OXA-74, *bla*OXA-1, and *bla*OXA-10) in plasmid contigs  
631 were identified using ISfinder webtool (Siguier et al., 2006).

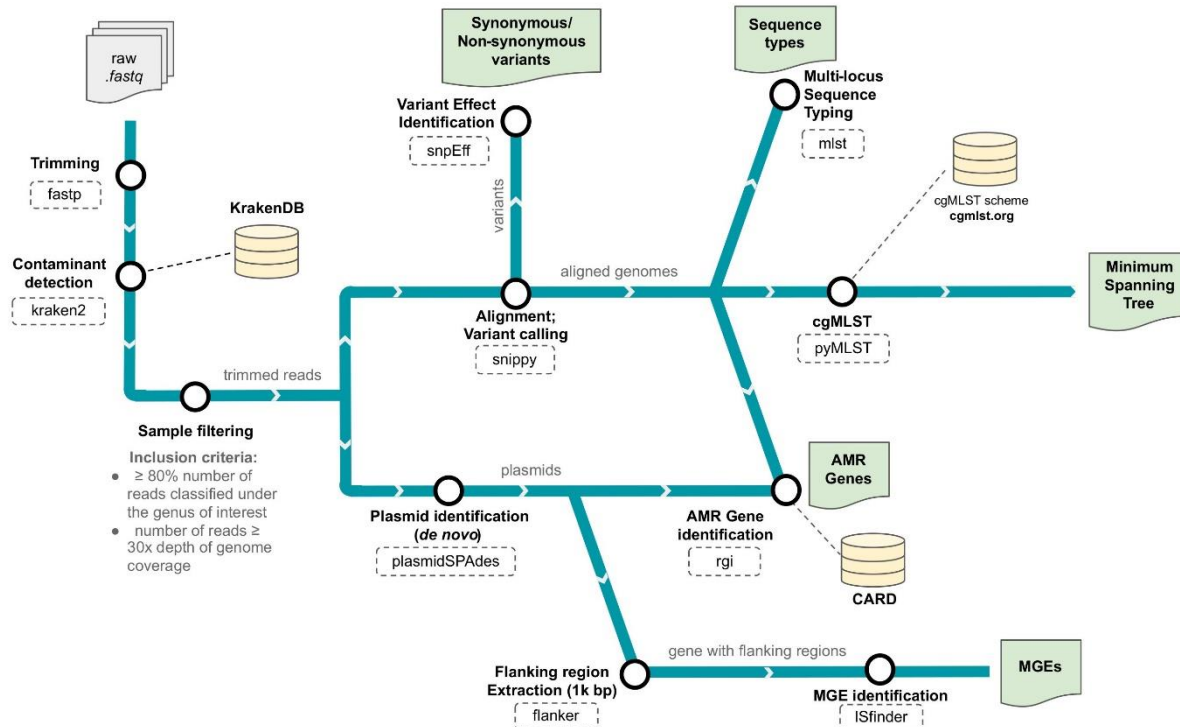
632 **Traditional MLST and cgMLST analyses.** Genotyping was performed using MLST for 35  
633 CRPA isolates obtained from the three tertiary hospitals in Metro Manila, Philippines. *P.*  
634 *aeruginosa* MLST profiles were predicted using Pasteur nomenclature in the Pathogenwatch  
635 (<https://cgps.gitbook.io/pathogenwatch/technical-descriptions/typing-methods/mlst>) and  
636 PubMLST database (Curran et al., 2004; Jolley et al., 2018; Jolley & Maiden, 2010).  
637 Pathogenwatch is a free, accessible, real-time microbial genome analysis platform that provides  
638 detailed and integrated genomic and epidemiological data. PubMLST provides Pathogenwatch's  
639 schemes, and an in-house search tool is used to ensure accurate MLST and cgMLST assignments  
640 (Sánchez-Busó et al., 2021). MLST is based on a community-agreed list of seven gene loci found  
641 in all species strains, with a code assigned to each allele (Curran et al., 2004; Jolley et al., 2018;  
642 Jolley & Maiden, 2010).

643 Additionally, cgMLST schema (Tönnies et al., 2021) a high-resolution typing was  
644 conducted using pyMLST (Biguenet et al., 2023) and the cgMLST.org database (de Sales et al.,  
645 2020) because of the ubiquitous characteristics of the 35 CRPA isolates and the involvement of  
646 multiple sequence types both known and new STs revealed by the traditional MLST. pyMLST is a  
647 Python tool that uses a broader selection of genes from the complete or core genome for  
648 bacterial phylogeny and typing (Biguenet et al., 2023). The strain's sequence type (ST) is  
649 determined by the combination of the several alleles that each distinct sequence corresponds to  
650 (Biguenet et al., 2023). pyMLST allows for the iterative expansion of strain collections for



651 comparison by storing MLST profiles and allele sequences in a local SQLite database (Biguenet et  
652 al., 2023; Tönnies et al., 2021). Using BLAST-Like Alignment Tool (BLAT). PyMLST's method aligns  
653 the first allele of each gene in the cg/wgMLST schema to the target bacterial genome of interest  
654 (Biguenet et al., 2023). MAFFT is a tool used to align incomplete genes in the cg/wgMLST schema,  
655 allowing precise data analysis and SQLite database storage (Biguenet et al., 2023). With PyMLST,  
656 users can generate schemas from their own data or download pre-existing schemas straight from  
657 sites like <https://www.cgmlst.org/ncs>. In this case, the cgMLST.org database was used. The 1,316  
658 whole genomes of *P. aeruginosa* that were obtained from the NCBI were used to create the  
659 cgMLST.org database, which can analyze 1,265,835 alleles in the nomenclature server and 3,867  
660 locus counts (de Sales et al., 2020; Tönnies et al., 2021).

661 **Phylogenetic Analysis** The minimum spanning tree was constructed using GrapeTree's  
662 MSTreeV2 (72) algorithm to assess the *P. aeruginosa* clonality based on allele differences and  
663 determine the epidemiological landscape. In addition, IQ-TREE2 (Minh et al., 2020) was used to  
664 construct the maximum likelihood tree with 1000 bootstrap replicates to assess *P. aeruginosa*  
665 genetic diversity based on single nucleotide mutation.



666 **FIG 7.** The in-house bioinformatics pipeline was used in the analysis. Available at

667 <https://github.com/abulenciamiguel/EpiTomas>

668 **Data availability.** Reads from all sequence samples (fastq files) are available under the

669 BioProject accession PRJNA1045071 and were made public in July 2025.

670 **Ethics declarations:** Ethical permission was approved by the Ethics Committee of the University

671 of Santo Tomas Hospital on August 2022 under Protocol Reference No.: REC-2022-04-

672 061-IS And the Institution's approval for the two hospitals.

673 **Funding:** No funding sources

674 **Conflict of interest:** No conflict of interest.

675

676 **SUPPLEMENTAL MATERIALS**

677 Excel File for Supplemental Files 1 to 7 .

678

679 **ACKNOWLEDGMENT**

680 Isolates were provided by the Microbiology Department of the University of Santo Tomas  
681 Hospital, St. Luke's Medical Center, Quezon City, and Chinese General Hospital and Medical  
682 Center, Manila. Assistance from Ms. Florelei Ordañez Alva, RMT; Mr. Miguel Alpez, RMT; Mr.  
683 Russell Gambito Panem, RMT; and Ms. Maria Eliza G. Apo, RMT.

684 Assistance was provided by Ms. Therris Mae Mamerto, MSc, Mr. Rinnel Bonifacio, Mr.  
685 Cleve Vergara, and Mr. Adriane Villavieja of the CMDR – UST laboratory.

686 Coordination from A/Prof. Matthew Sykes, Ph.D. of the University of South Australia, Prof.  
687 Edilberto P. Manahan, Ph.D., Prof. Agnes Castillo, Ph.D., and Prof. Dean Aleth Therese Dacanay,  
688 Ph.D. of the Faculty of Pharmacy, University of Santo Tomas.

689 The authors would also like to acknowledge Aldrin V. Imbag and Francisco Gerardo M.  
690 Polotan for providing the compute resources utilized in this study.

691

692 **REFERENCES**

693 Abordo, A. M. S., Carascal, M. B., Remenyi, R., Dalisay, D. S., & Saludes, J. P. (2023). Clinically  
694 Isolated  $\beta$ -Lactam-Resistant Gram-Negative Bacilli in a Philippine Tertiary Care Hospital  
695 Harbor Multi-Class  $\beta$ -Lactamase Genes. *Pathogens*, 12(8).  
696 <https://doi.org/10.3390/pathogens12081019>

697 Alcock, B. P., Huynh, W., Chalil, R., Smith, K. W., Raphenya, A. R., Wlodarski, M. A., Edalatmand,  
698 A., Petkau, A., Syed, S. A., Tsang, K. K., Baker, S. J. C., Dave, M., Mccarthy, M. C., Mukiri, K. M.,  
699 Nasir, J. A., Golbon, B., Imtiaz, H., Jiang, X., Kaur, K., ... Mcarthur, A. G. (2023). CARD 2023:  
700 expanded curation, support for machine learning, and resistome prediction at the  
701 Comprehensive Antibiotic Resistance Database. *Nucleic Acids Research*, *51*(1 D), D690–D699.  
702 <https://doi.org/10.1093/nar/gkac920>

703 Alcock, B. P., Raphenya, A. R., Lau, T. T. Y., Tsang, K. K., Bouchard, M., Edalatmand, A., Huynh, W.,  
704 Nguyen, A. L. V., Cheng, A. A., Liu, S., Min, S. Y., Miroshnichenko, A., Tran, H. K., Werfalli, R.  
705 E., Nasir, J. A., Oloni, M., Speicher, D. J., Florescu, A., Singh, B., ... McArthur, A. G. (2020). CARD  
706 2020: Antibiotic resistome surveillance with the comprehensive antibiotic resistance  
707 database. *Nucleic Acids Research*, *48*(D1), D517–D525. <https://doi.org/10.1093/nar/gkz935>

708 Amsalu, A., Sapula, S. A., Lopes, M. D. B., Hart, B. J., Nguyen, A. H., Drigo, B., Turnidge, J., Leong,  
709 L. E. X., & Venter, H. (2020). Efflux pump-driven antibiotic and biocide cross-resistance in  
710 *Pseudomonas Aeruginosa* isolated from different ecological Niches: A case study in the  
711 development of multidrug resistance in environmental hotspots. *Microorganisms*, *8*(11), 1–  
712 18. <https://doi.org/10.3390/microorganisms8111647>

713 Amsalu, A., Sapula, S. A., Whittall, J. J., Hart, B. J., Bell, J. M., Turnidge, J., & Venter, H. (2021).  
714 Worldwide distribution and environmental origin of the Adelaide imipenemase (AIM-1), a  
715 potent carbapenemase in *Pseudomonas aeruginosa*. *Microbial Genomics*, *7*(12).  
716 <https://doi.org/10.1099/mgen.0.000715>

- 717 Antipov, D., Hartwick, N., Shen, M., Raiko, M., Lapidus, A., & Pevzner, P. A. (2016). PlasmidSPAdes:  
718 Assembling plasmids from whole genome sequencing data. *Bioinformatics*, *32*(22), 3380–  
719 3387. <https://doi.org/10.1093/bioinformatics/btw493>
- 720 Arabameri, N., Heshmatipour, Z., Ardebili, S. E., & Bidhendi, Z. J. (2021). The role of gene  
721 mutations (Gyra, *parc*) in resistance to ciprofloxacin in clinical isolates of *Pseudomonas*  
722 *aeruginosa*. *Iranian Journal of Pathology*, *16*(4), 426–432.  
723 <https://doi.org/10.30699/ijp.2021.520570.2542>
- 724 Argimón, S., Masim, M. A. L., Gayeta, J. M., Lagrada, M. L., Macaranas, P. K. V., Cohen, V., Limas,  
725 M. T., Espiritu, H. O., Palarca, J. C., Chilam, J., Jamoralin, M. C., Villamin, A. S., Borlasa, J. B.,  
726 Olorosa, A. M., Hernandez, L. F. T., Boehme, K. D., Jeffrey, B., Abudahab, K., Hufano, C. M., ...  
727 Carlos, C. C. (2020). Integrating whole-genome sequencing within the National Antimicrobial  
728 Resistance Surveillance Program in the Philippines. *Nature Communications*, *11*(1).  
729 <https://doi.org/10.1038/s41467-020-16322-5>
- 730 Arowolo, M. T., Orababa, O. Q., Olaitan, M. O., Osibeluwo, B. V., Essiet, U. U., Batholomew, O. H.,  
731 Ogunrinde, O. G., Lagoke, O. A., Soriwei, J. D., Ishola, O. D., Ezeani, O. M., Onishile, A. O., &  
732 Olumodeji, E. (2023). Prevalence of carbapenem resistance in *Acinetobacter baumannii* and  
733 *Pseudomonas aeruginosa* in sub-Saharan Africa: A systematic review and meta-analysis. *PLoS*  
734 *ONE*, *18*(11 November). <https://doi.org/10.1371/journal.pone.0287762>
- 735 Arzanlou, M., Chai, W. C., & Venter, H. (2017). Intrinsic, adaptive and acquired antimicrobial  
736 resistance in Gram-negative bacteria. *Essays in Biochemistry*, *61*(1), 49–59.  
737 <https://doi.org/10.1042/EBC20160063>

- 738 Biguenet, A., Bordy, A., Atchon, A., Hocquet, D., & Valot, B. (2023). Introduction and benchmarking  
739 of pyMLST: open-source software for assessing bacterial clonality using core genome MLST.  
740 *Microbial Genomics*, 9(11). <https://doi.org/10.1099/mgen.0.001126>
- 741 Bogiel, T., Prażyńska, M., Kwiecińska-Piróg, J., Gospodarek-Komkowska, E., & Mikucka, A. (2021).  
742 Carbapenem-resistant pseudomonas aeruginosa strains-distribution of the essential  
743 enzymatic virulence factors genes. *Antibiotics*, 10(1), 1–10.  
744 <https://doi.org/10.3390/antibiotics10010008>
- 745 Bush, K., & Jacoby, G. A. (2010). Updated functional classification of  $\beta$ -lactamases. In *Antimicrobial*  
746 *Agents and Chemotherapy*. <https://doi.org/10.1128/AAC.01009-09>
- 747 Cabot, G., Ocampo-Sosa, A. A., Domínguez, M. A., Gago, J. F., Juan, C., Tubau, F., Rodríguez, C.,  
748 Moyà, B., Peña, C., Martínez-Martínez, L., & Oliver, A. (2012). Genetic markers of widespread  
749 extensively drug-resistant Pseudomonas aeruginosa high-risk clones. *Antimicrobial Agents*  
750 *and Chemotherapy*, 56(12), 6349–6357. <https://doi.org/10.1128/AAC.01388-12>
- 751 CDC. (2019). *Antibiotic resistance threats in the United States*.  
752 <https://doi.org/10.15620/cdc:82532>
- 753 Chen, S., Zhou, Y., & Gu, J. (2018). Fastp: An ultra-fast all-in-one FASTQ preprocessor.  
754 *Bioinformatics*, 34(17), i884–i890. <https://doi.org/10.1093/bioinformatics/bty560>
- 755 Cingolani, P., Platts, A., Wang, L. L., Coon, M., Nguyen, T., Wang, L., Land, S. J., Lu, X., & Ruden, D.  
756 M. (2012). A program for annotating and predicting the effects of single nucleotide  
757 polymorphisms, SnpEff: SNPs in the genome of Drosophila melanogaster strain w1118; iso-  
758 2; iso-3. *Fly Landes Bioscience*, 6(2), 80–92. <https://doi.org/10.4161/fly.19695>
- 759 CLSI. (2022). *M100 Performance Standards for Antimicrobial*. CLINICAL AND LABORATORY.

- 760 Curran, B., Jonas, D., Grundmann, H., Pitt, T., & Dowson, C. G. (2004). Development of a multilocus  
761 sequence typing scheme for the opportunistic pathogen *Pseudomonas aeruginosa*. *Journal*  
762 *of Clinical Microbiology*, 42(12), 5644–5649. [https://doi.org/10.1128/JCM.42.12.5644-](https://doi.org/10.1128/JCM.42.12.5644-5649.2004)  
763 5649.2004
- 764 Dai, X., Zhou, D., Xiong, W., Feng, J., Luo, W., Luo, G., Wang, H., Sun, F., & Zhou, X. (2016). The IncP-  
765 6 plasmid p10265-KPC from *Pseudomonas aeruginosa* carries a novel  $\Delta$ ISEc33-associated  
766 blaKPC-2 gene cluster. *Frontiers in Microbiology*, 7(MAR).  
767 <https://doi.org/10.3389/fmicb.2016.00310>
- 768 de Sales, R. O., Migliorini, L. B., Puga, R., Kocsis, B., & Severino, P. (2020). A Core Genome  
769 Multilocus Sequence Typing Scheme for *Pseudomonas aeruginosa*. *Frontiers in Microbiology*,  
770 11. <https://doi.org/10.3389/fmicb.2020.01049>
- 771 Department of Health - RITM. (2022). *Antimicrobial Resistance Surveillance Reference Laboratory,*  
772 *Annual Report*. <https://arsp.com.ph>
- 773 Gajdács, M. (2020). Carbapenem-resistant but cephalosporin-susceptible *Pseudomonas*  
774 *aeruginosa* in urinary tract infections: Opportunity for colistin sparing. *Antibiotics*, 9(4).  
775 <https://doi.org/10.3390/antibiotics9040153>
- 776 Gashaw, M., Gudina, E. K., Ali, S., Gabriele, L., Seeholzer, T., Alemu, B., Froeschl, G., Kroidl, A., &  
777 Wieser, A. (2024). Molecular characterization of carbapenem-resistance in Gram-negative  
778 isolates obtained from clinical samples at Jimma Medical Center, Ethiopia. *Frontiers in*  
779 *Microbiology*, 15. <https://doi.org/10.3389/fmicb.2024.1336387>
- 780 Gill, C. M., Aktap, E., Alfouzan, W., Bourassa, L., Brink, A., Burnham, C. A. D., Canton, R., Carmeli,  
781 Y., Falcone, M., Kiffer, C., Marchese, A., Martinez, O., Pournaras, S., Satlin, M., Seifert, H.,

- 782 Thabit, A. K., Thomson, K. S., Villegas, M. V., & Nicolau, D. P. (2021). The ERACE-PA Global  
783 Surveillance Program: Ceftolozane/tazobactam and Ceftazidime/avibactam in vitro Activity  
784 against a Global Collection of Carbapenem-resistant *Pseudomonas aeruginosa*. *European*  
785 *Journal of Clinical Microbiology and Infectious Diseases*, 40(12), 2533–2541.  
786 <https://doi.org/10.1007/s10096-021-04308-0>
- 787 Guerrero-Araya, E., Muñoz, M., Rodríguez, C., & Paredes-Sabja, D. (2021). FastMLST: A Multi-core  
788 Tool for Multilocus Sequence Typing of Draft Genome Assemblies. *Bioinformatics and Biology*  
789 *Insights*, 15. <https://doi.org/10.1177/11779322211059238>
- 790 Guo, X., Chen, R., Wang, Q., Li, C., Ge, H., Qiao, J., & Li, Y. (2022). Global prevalence, characteristics,  
791 and future prospects of IncX3 plasmids: A review. In *Frontiers in Microbiology* (Vol. 13).  
792 Frontiers Media S.A. <https://doi.org/10.3389/fmicb.2022.979558>
- 793 Halat, D. H., & Moubareck, C. A. (2022). The Intriguing Carbapenemases of *Pseudomonas*  
794 *aeruginosa*: Current Status, Genetic Profile, and Global Epidemiology. In *YALE JOURNAL OF*  
795 *BIOLOGY AND MEDICINE* (Vol. 95).
- 796 Hong, D. J., Bae, I. K., Jang, I. H., Jeong, S. H., Kang, H. K., & Lee, K. (2015). Epidemiology and  
797 characteristics of metallo- $\beta$ -lactamase-producing *Pseudomonas aeruginosa*. *Infection and*  
798 *Chemotherapy*, 47(2), 81–97. <https://doi.org/10.3947/ic.2015.47.2.81>
- 799 Horcajada, J. P., Montero, M., Oliver, A., Sorlí, L., Luque, S., Gómez-Zorrilla, S., Benito, N., & Grau,  
800 S. (2019). Epidemiology and treatment of multidrug-resistant and extensively drug-resistant  
801 *Pseudomonas aeruginosa* infections. *Clinical Microbiology Reviews*, 32(4).  
802 <https://doi.org/10.1128/CMR.00031-19>



- 803 Hu, Y., Peng, W., Wu, Y., Li, H., Wang, Q., Yi, H., Zhang, R., Shao, B., & Zhu, K. (2021). A Potential  
804 High-Risk Clone of *Pseudomonas aeruginosa* ST463. *Frontiers in Microbiology*, *12*.  
805 <https://doi.org/10.3389/fmicb.2021.670202>
- 806 Jolley, K. A., Bray, J. E., & Maiden, M. C. J. (2018). Open-access bacterial population genomics:  
807 BIGSdb software, the PubMLST.org website and their applications. *Wellcome Open Research*,  
808 *3*. <https://doi.org/10.12688/wellcomeopenres.14826.1>
- 809 Jolley, K. A., & Maiden, M. C. J. (2010). BIGSdb: Scalable analysis of bacterial genome variation at  
810 the population level. *BMC Bioinformatics*, *11*(1), 595. [https://doi.org/10.1186/1471-2105-](https://doi.org/10.1186/1471-2105-11-595)  
811 [11-595](https://doi.org/10.1186/1471-2105-11-595)
- 812 Karlowsky, J. A., Kazmierczak, K. M., Bouchillon, S. K., De Jonge, B. L. M., Stone, G. G., & Sahm, D.  
813 F. (2018). *In Vitro Activity of Ceftazidime-Avibactam against Clinical Isolates of*  
814 *Enterobacteriaceae and Pseudomonas aeruginosa Collected in Asia-Pacific Countries: Results*  
815 *from the INFORM Global Surveillance Program, 2012 to 2015*.  
816 <https://journals.asm.org/journal/aac>
- 817 Kocsis, B., Gulyás, D., & Szabó, D. (2021). Diversity and distribution of resistance markers in  
818 *pseudomonas aeruginosa* international high-risk clones. *Microorganisms*, *9*(2), 1–14.  
819 <https://doi.org/10.3390/microorganisms9020359>
- 820 Leungtongkam, U., Thummeepak, R., Tسانapak, K., & Sitthisak, S. (2018). Acquisition and transfer  
821 of antibiotic resistance genes in association with conjugative plasmid or class 1 integrons of  
822 *Acinetobacter baumannii*. *PLoS ONE*, *13*(12), 1–12.  
823 <https://doi.org/10.1371/journal.pone.0208468>

- 824 Li, H., Luo, Y. F., Williams, B. J., Blackwell, T. S., & Xie, C. M. (2012). Structure and function of OprD  
825 protein in *Pseudomonas aeruginosa*: From antibiotic resistance to novel therapies. In  
826 *International Journal of Medical Microbiology* (Vol. 302, Issue 2, pp. 63–68).  
827 <https://doi.org/10.1016/j.ijmm.2011.10.001>
- 828 Liakopoulos, A., Van Der Goot, J., Bossers, A., Betts, J., Brouwer, M. S. M., Kant, A., Smith, H.,  
829 Ceccarelli, D., & Mevius, D. (2018). Genomic and functional characterisation of IncX3  
830 plasmids encoding bla SHV-12 in *Escherichia coli* from human and animal origin. *Scientific*  
831 *Reports*, 8(1). <https://doi.org/10.1038/s41598-018-26073-5>
- 832 Liu, J., Shen, Q., & Bao, H. (2022). Comparison of seven SNP calling pipelines for the next-  
833 generation sequencing data of chickens. *PLoS ONE*, 17(1 January).  
834 <https://doi.org/10.1371/journal.pone.0262574>
- 835 Llaca-Díaz, J. M., Mendoza-Olazarán, S., Camacho-Ortiz, A., Flores, S., & Garza-González, E. (2013).  
836 One-year surveillance of escape pathogens in an intensive care unit of monterrey, Mexico.  
837 *Chemotherapy*, 58(6), 475–481. <https://doi.org/10.1159/000346352>
- 838 Manohar, P., Leptihn, S., Lopes, B. S., & Nachimuthu, R. (2021). Dissemination of carbapenem  
839 resistance and plasmids encoding carbapenemases in Gram-negative bacteria isolated in  
840 India. *JAC-Antimicrobial Resistance*, 3(1). <https://doi.org/10.1093/jacamr/dlab015>
- 841 Minh, B. Q., Schmidt, H. A., Chernomor, O., Schrempf, D., Woodhams, M. D., Von Haeseler, A.,  
842 Lanfear, R., & Teeling, E. (2020). IQ-TREE 2: New Models and Efficient Methods for  
843 Phylogenetic Inference in the Genomic Era. *Molecular Biology and Evolution*, 37(5), 1530–  
844 1534. <https://doi.org/10.1093/molbev/msaa015>

845 Murray, C. J., Ikuta, K. S., Sharara, F., Swetschinski, L., Robles Aguilar, G., Gray, A., Han, C.,  
846 Bisignano, C., Rao, P., Wool, E., Johnson, S. C., Browne, A. J., Chipeta, M. G., Fell, F., Hackett,  
847 S., Haines-Woodhouse, G., Kashef Hamadani, B. H., Kumaran, E. A. P., McManigal, B., ...  
848 Naghavi, M. (2022). Global burden of bacterial antimicrobial resistance in 2019: a systematic  
849 analysis. *The Lancet*, 399(10325), 629–655. [https://doi.org/10.1016/S0140-6736\(21\)02724-](https://doi.org/10.1016/S0140-6736(21)02724-0)  
850 0

851 Nieto-Saucedo, J. R., López-Jacome, L. E., Franco-Cendejas, R., Colín-Castro, C. A., Hernández-  
852 Duran, M., Rivera-Garay, L. R., Zamarripa-Martinez, K. S., & Mosqueda-Gómez, J. L. (2023).  
853 Carbapenem-Resistant Gram-Negative Bacilli Characterization in a Tertiary Care Center from  
854 El Bajío, Mexico. *Antibiotics*, 12(8). <https://doi.org/10.3390/antibiotics12081295>

855 Nordmann, P., & Poirel, L. (2019). Epidemiology and Diagnostics of Carbapenem Resistance in  
856 Gram-negative Bacteria. *Clinical Infectious Diseases*, 69(Suppl 7), S521–S528.  
857 <https://doi.org/10.1093/cid/ciz824>

858 Oliver, A., Mulet, X., López-Causapé, C., & Juan, C. (2015). The increasing threat of *Pseudomonas*  
859 *aeruginosa* high-risk clones. In *Drug Resistance Updates* (Vols. 21–22, pp. 41–59). Churchill  
860 Livingstone. <https://doi.org/10.1016/j.drug.2015.08.002>

861 Partridge, S. R., Kwong, S. M., Firth, N., & Jensen, S. O. (2018). Mobile Genetic Elements Associated  
862 with Antimicrobial Resistance. *Clinical Microbiology*. <https://doi.org/10>

863 Pedersen, B. S., & Quinlan, A. R. (2018). Mosdepth: Quick coverage calculation for genomes and  
864 exomes. *Bioinformatics*, 34(5), 867–868. <https://doi.org/10.1093/bioinformatics/btx699>

865 Pedroso, M. M., Waite, D. W., Melse, O., Wilson, L., Mitić, N., McGeary, R. P., Antes, I., Guddat, L.  
866 W., Hugenholtz, P., & Schenk, G. (2020). Broad spectrum antibiotic-degrading metallo- $\beta$ -

867 lactamases are phylogenetically diverse. In *Protein and Cell* (Vol. 11, Issue 8, pp. 613–617).  
868 Higher Education Press. <https://doi.org/10.1007/s13238-020-00736-4>

869 Pollini, S., Maradei, S., Pecile, P., Olivo, G., Luzzaro, F., Docquier, J. D., & Rossolini, G. M. (2013).  
870 FIM-1, a new acquired metallo- $\beta$ -lactamase from a *Pseudomonas aeruginosa* clinical isolate  
871 from Italy. *Antimicrobial Agents and Chemotherapy*. <https://doi.org/10.1128/AAC.01953-12>

872 Queenan, A. M., & Bush, K. (2007). Carbapenemases: The versatile  $\beta$ -lactamases. In *Clinical*  
873 *Microbiology Reviews*. <https://doi.org/10.1128/CMR.00001-07>

874 Raman, G., Avendano, E. E., Chan, J., Merchant, S., & Puzniak, L. (2018). Risk factors for  
875 hospitalized patients with resistant or multidrug-resistant *Pseudomonas aeruginosa*  
876 infections: A systematic review and meta-analysis. *Antimicrobial Resistance and Infection*  
877 *Control*, 7(1). <https://doi.org/10.1186/s13756-018-0370-9>

878 Ramirez, M. S., Traglia, G. M., Lin, D. L., Tran, T., & Tolmasky, M. E. (2014). Plasmid-Mediated  
879 Antibiotic Resistance and Virulence in Gram-Negatives: the *Klebsiella pneumoniae* Paradigm.  
880 *Microbiology Spectrum*, 2(5), 1–15. <https://doi.org/10.1128/microbiolspec.plas-0016-2013>

881 Reuland, E. A., Halaby, T., Hays, J. P., De Jongh, D. M. C., Snetselaar, H. D. R., Van Keulen, M., Elders,  
882 P. J. M., Savelkoul, P. H. M., Vandenbroucke-Grauls, C. M. J. E., & Al Naiemi, N. (2015).  
883 Plasmid-mediated AmpC: Prevalence in community-acquired isolates in Amsterdam, the  
884 Netherlands, and risk factors for carriage. *PLoS ONE*, 10(1), 1–9.  
885 <https://doi.org/10.1371/journal.pone.0113033>

886 Reyes, J., Komarow, L., Chen, L., Ge, L., Hanson, B. M., Cober, E., Herc, E., Alenazi, T., Kaye, K. S.,  
887 Garcia-Diaz, J., Li, L., Kanj, S. S., Liu, Z., Oñate, J. M., Salata, R. A., Marimuthu, K., Gao, H.,  
888 Zong, Z., Valderrama-Beltrán, S. L., ... Satlin, M. (2023). Global epidemiology and clinical

889 outcomes of carbapenem-resistant *Pseudomonas aeruginosa* and associated  
890 carbapenemases (POP): a prospective cohort study. *The Lancet Microbe*, 4(3), e159–e170.  
891 [https://doi.org/10.1016/S2666-5247\(22\)00329-9](https://doi.org/10.1016/S2666-5247(22)00329-9)

892 Rice, L. B. (2008). Federal funding for the study of antimicrobial resistance in nosocomial  
893 pathogens: No ESKAPE. In *Journal of Infectious Diseases* (Vol. 197, Issue 8, pp. 1079–1081).  
894 <https://doi.org/10.1086/533452>

895 Sahuquillo-Arce, J. M. (2015). Carbapenemases: A worldwide threat to antimicrobial therapy.  
896 *World Journal of Pharmacology*, 4(1), 75. <https://doi.org/10.5497/wjp.v4.i1.75>

897 Sánchez-Busó, L., Yeats, C. A., Taylor, B., Goater, R. J., Underwood, A., Abudahab, K., Argimón, S.,  
898 Ma, K. C., Mortimer, T. D., Golparian, D., Cole, M. J., Grad, Y. H., Martin, I., Raphael, B. H.,  
899 Shafer, W. M., Town, K., Wi, T., Harris, S. R., Unemo, M., & Aanensen, D. M. (2021). A  
900 community-driven resource for genomic epidemiology and antimicrobial resistance  
901 prediction of *Neisseria gonorrhoeae* at Pathogenwatch. *Genome Medicine*, 13(1).  
902 <https://doi.org/10.1186/s13073-021-00858-2>

903 Sapula, S. A., Amsalu, A., Whittall, J. J., Hart, B. J., Siderius, N. L., Nguyen, L., Gerber, C., Turnidge,  
904 J., & Venter, H. (2023). The scope of antimicrobial resistance in residential aged care facilities  
905 determined through analysis of *Escherichia coli* and the total wastewater resistome .  
906 *Microbiology Spectrum*, 11(6). <https://doi.org/10.1128/spectrum.00731-23>

907 Sawa, T., Kooguchi, K., & Moriyama, K. (2020). Molecular diversity of extended-spectrum  $\beta$ -  
908 lactamases and carbapenemases, and antimicrobial resistance. In *Journal of Intensive Care*  
909 (Vol. 8, Issue 1). BioMed Central Ltd. <https://doi.org/10.1186/s40560-020-0429-6>

- 910 Schäfer, E., Malecki, M., Tellez-Castillo, C. J., Pfennigwerth, N., Marlinghaus, L., Higgins, P. G.,  
911 Mattner, F., & Wendel, A. F. (2019). Molecular surveillance of carbapenemase-producing  
912 *Pseudomonas aeruginosa* at three medical centres in Cologne, Germany. *Antimicrobial*  
913 *Resistance and Infection Control*, 8(1). <https://doi.org/10.1186/s13756-019-0665-5>
- 914 Seah, Y. M., Stewart, M. K., Hoogestraat, D., Ryder, M., Cookson, B. T., Salipante, S. J., & Hoffman,  
915 N. G. (2023). In Silico Evaluation of Variant Calling Methods for Bacterial Whole-Genome  
916 Sequencing Assays. *Journal of Clinical Microbiology*, 61(8).  
917 <https://doi.org/10.1128/jcm.01842-22>
- 918 Shariati, A., Azimi, T., Ardebili, A., Chirani, A. S., Bahramian, A., Pormohammad, A., Sadredinamin,  
919 M., Erfanimanesh, S., Bostanghadiri, N., Shams, S., & Hashemi, A. (2018). Insertional  
920 inactivation of oprD in carbapenem-resistant *Pseudomonas aeruginosa* strains isolated from  
921 burn patients in Tehran, Iran. *New Microbes and New Infections*, 21, 75–80.  
922 <https://doi.org/10.1016/j.nmni.2017.10.013>
- 923 Shu, J. C., Kuo, A. J., Su, L. H., Liu, T. P., Lee, M. H., Su, I. N., & Wu, T. L. (2017). Development of  
924 carbapenem resistance in *Pseudomonas aeruginosa* is associated with OprD polymorphisms,  
925 particularly the amino acid substitution at codon 170. *Journal of Antimicrobial*  
926 *Chemotherapy*, 72(9), 2489–2495. <https://doi.org/10.1093/jac/dkx158>
- 927 Sid Ahmed, M. A., Khan, F. A., Hadi, H. A., Skariah, S., Sultan, A. A., Salam, A., Al Khal, A. L.,  
928 Söderquist, B., Ibrahim, E. B., Omrani, A. S., & Jass, J. (2022). Association of blaVIM-2, blaPDC-  
929 35, blaOXA-10, blaOXA-488 and blaVEB-9  $\beta$ -Lactamase Genes with Resistance to  
930 Ceftazidime– Avibactam and Ceftolozane–Tazobactam in Multidrug-Resistant *Pseudomonas*  
931 *aeruginosa*. *Antibiotics*, 11(2). <https://doi.org/10.3390/antibiotics11020130>

- 932 Siguier, P., Gourbeyre, E., Varani, A., Ton-Hoang, B., & Chandler, M. (2015). Everyman's Guide to  
933 Bacterial Insertion Sequences. *Microbiology Spectrum*, 3(2).  
934 <https://doi.org/10.1128/microbiolspec.mdna3-0030-2014>
- 935 Siguier, P., Perochon, J., Lestrade, L., Mahillon, J., & Chandler, M. (2006). ISfinder: the reference  
936 centre for bacterial insertion sequences. *Nucleic Acids Research*, 34(Database issue).  
937 <https://doi.org/10.1093/nar/gkj014>
- 938 Sihombing, B., Bhatia, R., Srivastava, R., Aditama, T. Y., Laxminarayan, R., & Rijal, S. (2023).  
939 Response to antimicrobial resistance in South-East Region. In *The Lancet Regional Health -*  
940 *Southeast Asia* (Vol. 18, Issue 100306). Elsevier Ltd.  
941 <https://doi.org/10.1016/j.lansea.2023.100303>
- 942 Stover, C. K., Pham<sup>2</sup>, X. Q., Erwin, A. L., Mizoguchi, S. D., Warren, P., Hickey, M. J., Brinkman<sup>3</sup>, F.  
943 S. L., Hufnagle, W. O., Kowalik, D. J., Lagrou, M., Garber, R. L., Goltry, L., Tolentino, E.,  
944 Westbrook-Wadman, S., Yuan, Y., Brody, L. L., Coulter, S. N., Folger, K. R., Kas<sup>2</sup>, A., ... Olson<sup>2</sup>,  
945 M. V. (2000). Complete genome sequence of *Pseudomonas aeruginosa* PAO1, an  
946 opportunistic pathogen. *Nature*, 406. [www.nature.com](http://www.nature.com)
- 947 Suzuki, Y., Nazareno, P. J., Nakano, R., Mondoy, M., Nakano, A., Bugayong, M. P., Bilar, J., Perez, M.,  
948 Medina, E. J., Saito-Obata, M., Saito, M., Nakashima, K., Oshitani, H., & Yano, H. (2019).  
949 Environmental Presence and Genetic Characteristics of Carbapenemase-Producing  
950 Enterobacteriaceae from Hospital Sewage and River Water in the Philippines. *Applied and*  
951 *Environmental Microbiology*. <https://doi.org/10>
- 952 Tacconelli, E., Carrara, E., Savoldi, A., Harbarth, S., Mendelson, M., Monnet, D. L., Pulcini, C.,  
953 Kahlmeter, G., Kluytmans, J., Carmeli, Y., Ouellette, M., Outtersson, K., Patel, J., Cavalieri, M.,

- 954 Cox, E. M., Houchens, C. R., Grayson, M. L., Hansen, P., Singh, N., ... Zorzet, A. (2018).  
955 Discovery, research, and development of new antibiotics: the WHO priority list of antibiotic-  
956 resistant bacteria and tuberculosis. *The Lancet Infectious Diseases*, 18(3), 318–327.  
957 [https://doi.org/10.1016/S1473-3099\(17\)30753-3](https://doi.org/10.1016/S1473-3099(17)30753-3)
- 958 Tacconelli, E., Carrara, E., Savoldi, A., Kattula, D., & Burkert, F. (2017). *Global priority list of*  
959 *antibiotic-resistant bacteria to guide research, discovery, and development of new*  
960 *antibiotics*. <http://www.cdc.gov/drugresistance/threat-report-2013/>
- 961 Teixeira, M., Pillay, S., Urhan, A., & Abeel, T. (2023). SHIP: identifying antimicrobial resistance gene  
962 transfer between plasmids. *Bioinformatics*, 39(10).  
963 <https://doi.org/10.1093/bioinformatics/btad612>
- 964 Tönnies, H., Prior, K., Harmsen, D., & Mellmann, A. (2021). Establishment and evaluation of a core  
965 genome multilocus sequence typing scheme for whole-genome sequence-based typing of  
966 *Pseudomonas aeruginosa*. *Journal of Clinical Microbiology*, 59(3).  
967 <https://doi.org/10.1128/JCM.01987-20>
- 968 US Department of Health and Human Services; CDC. (2019). Carbapenem-Resistant  
969 *Acinetobacter*. *Center for Disease Control and Prevention*, 17–23.  
970 [https://doi.org/10.5848/dos.978-1-909293-20-5\\_3](https://doi.org/10.5848/dos.978-1-909293-20-5_3)
- 971 Venkataramana, G. P., Lalitha, A. K. V., Mariappan, S., & Sekar, U. (2022). Plasmid-Mediated  
972 Fluoroquinolone Resistance in *Pseudomonas aeruginosa* and *Acinetobacter baumannii*.  
973 *Journal of Laboratory Physicians*, 14(03), 271–277. <https://doi.org/10.1055/s-0042-1742636>
- 974 Wang, M. G., Liu, Z. Y., Liao, X. P., Sun, R. Y., Li, R. B., Liu, Y., Fang, L. X., Sun, J., Liu, Y. H., & Zhang,  
975 R. M. (2021). Retrospective data insight into the global distribution of carbapenemase-



976 producing pseudomonas aeruginosa. *Antibiotics*, 10(5).

977 <https://doi.org/10.3390/antibiotics10050548>

978 Willyard, C. (2017). The drug-resistant bacteria that pose the greatest health threats. *Nature*,  
979 543(15).

980 Wood, D. E., Lu, J., & Langmead, B. (2019). Improved metagenomic analysis with Kraken 2. *BioRxiv*.

981 <https://doi.org/10.1101/762302>

982 Yoon, E. J., & Jeong, S. H. (2021). Mobile Carbapenemase Genes in *Pseudomonas aeruginosa*. In  
983 *Frontiers in Microbiology* (Vol. 12). Frontiers Media S.A.

984 <https://doi.org/10.3389/fmicb.2021.614058>

985 Zhao, W.-H., & Hu, Z.-Q. (2015). Acquired metallo- $\beta$ -lactamases and their genetic association with  
986 class 1 integrons and ISCR elements in Gram-negative bacteria. *Future Microbiol*, 5, 873–887.

987 <https://doi.org/10.2217/FMB.15.18>

988

#### 989 **ONLINE REFERENCES**

990 <https://github.com/tseemANn/snippy>

991 <https://github.com/abulenciamiguel/EpiTomas>

992 <https://cgps.gitbook.io/pathogenwatch/technical-descriptions/typing-methods/mlst>