

1 **MIAI: Maturation of Immunity Against Influenza - a German birth**  
2 **cohort study with focus on the development of immunity against**  
3 **respiratory viral infections**

4  
5 Carina R. Hartmann<sup>1†</sup>, Robin Khan<sup>1†</sup>, Jennifer Schöning<sup>1</sup>, Maximilian Richter<sup>1</sup>, Maike Willers<sup>2</sup>,  
6 Sabine Pirr<sup>2,3</sup>, Julia Heckmann<sup>1</sup>, Johannes Dirks<sup>1,4</sup>, Henner Morbach<sup>1,5</sup>, Monika Konrad<sup>1</sup>, Elena  
7 Fries<sup>1</sup>, Magdalene Winkler<sup>6</sup>, Johanna Büchel<sup>6</sup>, Silvia Seidenspinner<sup>1</sup>, Jonas Fischer<sup>1</sup>, Claudia  
8 Vollmuth<sup>1</sup>, Martin Meinhardt<sup>1</sup>, Janina Marissen<sup>1</sup>, Mirco Schmolke<sup>7,8</sup>, Sibylle Haid<sup>9</sup>, Thomas  
9 Pietschmann<sup>3,9,10</sup>, Simone Backes<sup>11</sup>, Lars Dölken<sup>3,12</sup>, Ulrike Löber<sup>13-16</sup>, Thomas Keil<sup>17-19</sup>, Peter  
10 U. Heuschmann<sup>18,20,21</sup>, Achim Wöckel<sup>6</sup>, Sagar<sup>22</sup>, Thomas Ulas<sup>23-25</sup>, Sofia K. Forslund-  
11 Startceva<sup>13-15,26</sup>, Christoph Härtel<sup>1‡</sup> and Dorothee Viemann<sup>1-3,27\*‡</sup>

12  
13 <sup>1</sup> Department of Pediatrics, University Hospital Würzburg, Würzburg, Germany

14 <sup>2</sup> Department of Pediatric Pneumology, Allergology and Neonatology, Hannover Medical  
15 School, Hannover, Germany

16 <sup>3</sup> Cluster of Excellence RESIST (EXC 2155), Hannover Medical School, Hannover, Germany

17 <sup>4</sup> German Center for Infection Research, Site Hamburg-Lübeck-Borstel-Riems, Hamburg,  
18 Germany

19 <sup>5</sup> Center for Primary Immunodeficiencies and Autoinflammatory Diseases (CIDA), University  
20 Hospital Würzburg, Würzburg, Germany

21 <sup>6</sup> Department of Gynecology and Obstetrics, University Hospital Würzburg, Würzburg,  
22 Germany

23 <sup>7</sup> Department of Microbiology and Molecular Medicine, University of Geneva, Rue Michel-  
24 Servet 1, Geneva, Switzerland

25 <sup>8</sup> Center for Inflammation Research, Faculty of Medicine, University of Geneva, Geneva,  
26 Switzerland

NOTE: This preprint reports new research that has not been certified by peer review and should not be used to guide clinical practice.

- 27 <sup>9</sup> Institute for Experimental Virology, TWINCORE, Centre for Experimental and Clinical  
28 Infection Research, a joint venture between the Helmholtz Centre for Infection Research  
29 and the Hannover Medical School, Hannover, Germany
- 30 <sup>10</sup> German Centre for Infection Research, Partner site Braunschweig-Hannover,  
31 Braunschweig, Germany
- 32 <sup>11</sup> Institute for Virology and Immunobiology, University of Würzburg, Würzburg, Germany
- 33 <sup>12</sup> Institute of Virology, Hannover Medical School, Hannover, Germany
- 34 <sup>13</sup> Max-Delbrück-Center for Molecular Medicine in the Helmholtz Association, Berlin, Germany
- 35 <sup>14</sup> Experimental and Clinical Research Center, a cooperation of Charité - Universitätsmedizin  
36 Berlin and Max-Delbrück-Center for Molecular Medicine, Berlin, Germany
- 37 <sup>15</sup> Charité - Universitätsmedizin Berlin, Corporate Member of Freie Universität Berlin,  
38 Humboldt-Universität zu Berlin, and Berlin Institute of Health, Berlin, Germany
- 39 <sup>16</sup> DZHK (German Centre for Cardiovascular Research), Partner site Berlin, Berlin, Germany
- 40 <sup>17</sup> Institute of Social Medicine, Epidemiology and Health Economics, Charité -  
41 Universitätsmedizin Berlin, Berlin, Germany
- 42 <sup>18</sup> Institute of Clinical Epidemiology and Biometry, University of Würzburg, Würzburg,  
43 Germany
- 44 <sup>19</sup> State Institute of Health I, Bavarian Health and Food Safety Authority, Erlangen, Germany
- 45 <sup>20</sup> Institute for Medical Data Science, University Hospital Würzburg, Würzburg, Germany
- 46 <sup>21</sup> Clinical Trial Centre Würzburg, University Hospital Würzburg, Würzburg, Germany
- 47 <sup>22</sup> Department of Medicine II (Gastroenterology, Hepatology, Endocrinology, and Infectious  
48 Diseases), Freiburg University Medical Center, University of Freiburg, Freiburg, Germany
- 49 <sup>23</sup> Systems Medicine, German Center for Neurodegenerative Diseases (DZNE), Bonn,  
50 Germany
- 51 <sup>24</sup> PRECISE Platform for Single Cell Genomics and Epigenomics, DZNE and University of  
52 Bonn, Bonn, Germany
- 53 <sup>25</sup> Genomics and Immunoregulation, Life & Medical Sciences (LIMES) Institute, University of  
54 Bonn, Bonn, Germany

55 <sup>26</sup> Structural and Computational Biology Unit, European Molecular Biology Laboratory (EMBL),  
56 Heidelberg, Germany

57 <sup>27</sup> Center for Infection Research, University Würzburg, Würzburg, Germany

58 † These authors contributed equally to this work and share first authorship

59 ‡ These authors contributed equally to this work and share senior authorship

60 \* Correspondence: [viemann\\_d@ukw.de](mailto:viemann_d@ukw.de)

61

62 **Abstract**

63 Respiratory viral infections (RVIs) are a major global contributor to morbidity and mortality. The  
64 susceptibility and outcome of RVIs are strongly age-dependent and show considerable inter-  
65 population differences, pointing to genetically and/or environmentally driven developmental  
66 variability. The factors determining the age-dependency and shaping the age-related changes  
67 of human anti-RVI immunity after birth are still elusive. We are conducting a prospective birth  
68 cohort study aiming at identifying endogenous and environmental factors associated with the  
69 susceptibility to RVIs and their impact on cellular and humoral immune responses against the  
70 influenza A virus (IAV), respiratory syncytial virus (RSV) and severe acute respiratory  
71 syndrome coronavirus 2 (SARS-CoV-2). The MIAI birth cohort enrolls healthy, full-term  
72 neonates born at the University Hospital Würzburg, Germany, with follow-up at four defined  
73 time-points during the first year of life. At each study visit, clinical metadata including diet,  
74 lifestyle exposures, sociodemographic information, and physical examinations, are collected  
75 along with extensive biomaterial sampling. Biomaterials are used to generate comprehensive,  
76 integrated multi-omics datasets including transcriptomic, epigenomic, proteomic, metabolomic  
77 and microbiomic methods. The results are expected to capture a holistic picture of the  
78 variability of immune trajectories with a focus on cellular and humoral key players involved in  
79 the defense of RVIs and the impact of host and environmental factors thereon. Thereby, MIAI  
80 aims at providing insights that allow unraveling molecular mechanisms that can be targeted to  
81 promote the development of competent anti-RVI immunity in early life and prevent severe  
82 RVIs.

83

84 **Trial registration number:** DRKS00034278

85 **Keywords:** Birth cohort, respiratory viral infection, IAV, RSV, SARS-CoV-2, multi-omics data,  
86 anti-viral immunity, microbiota

## 87 INTRODUCTION

88 Several epidemiological studies demonstrate strong age-dependent differences for the  
89 susceptibility and outcome of respiratory viral infections (RVIs) (1). Prime examples are  
90 infections with the respiratory syncytial virus (RSV), the influenza A virus (IAV) and the severe  
91 acute respiratory syndrome coronavirus 2 (SARS-CoV-2).

92 RSV is the most common cause of severe respiratory infection in infants, leading to over 3  
93 million hospitalizations and around 66,000 deaths worldwide each year (2–4). Remarkable  
94 age-related differences in innate cytokine responses following recognition of RSV have been  
95 observed (3, 5), suggesting a critical role of the host response in the disease pathology and  
96 clinical outcome. RSV infects virtually all children by the age of three years and then repeatedly  
97 infects throughout life. Therefore, host factors of the epithelial barrier and the innate immune  
98 system might define the susceptibility to RSV infections, while adaptive immunity, which  
99 underlies profound maturational changes during early life, might rather contribute to the  
100 severity of the course of an established RSV infections but does not necessarily acquire long-  
101 lasting protective memory.

102 In contrast to the age profile of RSV infections, work from the Global Burden of Disease Study  
103 showed that the population attributable fraction of IAV-caused mortality as well as morbidity  
104 are lowest in children under 5 years of age and highest in mid-aged adults (30–40 years) (6).

105 The age-dependent differences in the clinical outcome of IAV infection are not fully explained  
106 by pre-existing comorbidities or maternal transfer of adaptive anti-influenza immunity to infants  
107 and point to hitherto unidentified immunological peculiarities that protect infants against IAV.

108 Children have also less severe symptoms when infected with SARS-CoV-2 (7, 8). Several  
109 hypotheses for the age-related difference in the severity of coronavirus disease 2019 (COVID-  
110 19) are discussed, such as more robust type I interferon (IFN) response, more effective T cell  
111 immunity (9), and higher expression of SARS-CoV-2 sensing receptors and inflammatory  
112 baseline activation of pediatric compared to adult airway epithelial cells (AECs) (10–12).  
113 However, the causes and biological meaning of such differential programming of anti-viral  
114 immunity at different ages and in dependency of the type of virus remains elusive.

115 Apart from the age dependency there is also strong heterogeneity in the course and outcome  
116 of RVIs among individuals of same age, pointing to considerable genetic variability or  
117 differential development of immunity in concert with their environment. Understanding inter-  
118 individual variation and its causes has important implications for targeting patients for  
119 escalation of care, inclusion in clinical trials, and individualized medical therapy including  
120 vaccination. Besides clear biological differences such as age, sex, race, presence of  
121 comorbidities, and genetic variation, differential maturation of immunity during environmental  
122 adaptation after birth might result in a different education and regulation of immune responses  
123 against RVIs. In humans, the key factors influencing the reprogramming of immunity towards  
124 RVIs are still poorly defined and comparison of their effect sizes is long overdue.

125 A myriad of data has demonstrated that the immune system of the fetus and infant is  
126 characterized by a high plasticity, which comes with a high susceptibility to lifelong imprinting  
127 effects from environmental cues. Over the past two decades strong evidence accumulated that  
128 the composition and function of the human microbiome play a particularly critical role for the  
129 development of immunity and overall health (13, 14). Several longitudinal studies revealed  
130 aberrant trajectories of upper respiratory microbiota during infancy that are associated with an  
131 increased susceptibility to respiratory tract infections. These particularly include delayed and  
132 low abundance of *Corynebacterium* and *Dolosigranulum* species and high abundance of  
133 *Moraxella*, *Haemophilus* or *Streptococcus* species (15–19). However, our knowledge on how  
134 exactly these strains impede respective promote immunity against respiratory viruses remains  
135 largely elusive.

136 Furthermore, the gut microbiota seems to have impact on the development of immunity against  
137 RVIs. Though hitherto only shown in mice, gut microbiota-derived short chain fatty acids  
138 protected against RSV infections by improving type 1 IFN responses and increasing IFN-  
139 stimulated gene expression in lung epithelial cells (20), while the presence of segmented  
140 filamentous bacteria protected against IAV, RSV as well as SARS-CoV-2 infection by priming  
141 resident alveolar macrophages (21). In humans, only an association between specific gut  
142 microbial profiles and RSV disease severity in hospitalized infants has been detected so far

143 (22). However, the molecular pathways of this gut-lung axis and their delicate dependency on  
144 age and interactions with environmental exposures (e.g., diet, passive smoke, pollutants)  
145 remain unclear. Several clinical trials contributed to an increasing body of evidence that  
146 probiotics might be an option to lower the susceptibility to RVIs (23–25); however, many  
147 questions on how exactly (e.g., strain dependency), to what extent individualized (e.g., age  
148 dependency, host microbial background) and when (e.g., neonatal window) to use such  
149 interventions are still open (26–28). Addressing these remaining knowledge gaps could enable  
150 modulation of airway and gut microbial communities and their metabolic patterns, presenting  
151 a potential therapeutic strategy to prevent or ameliorate severe RVIs.

152 In summary, at specific developmental stages opposite infectious susceptibility can be  
153 observed depending on the causative viral strain. Moreover, different trajectories of immune  
154 maturation after birth can lead to strong inter-population differences in the susceptibility to  
155 severe RVIs. To understand which specific age- and microbiota-related immunological  
156 differences and temporal changes are most relevant across various RVIs, we need a  
157 comprehensive view of the longitudinal development of anti-RVI immunity and the impact of  
158 and interplay with key factors involved. This requires the establishment of a tailored birth cohort  
159 study that investigates longitudinally and in-depth the development of the function of the airway  
160 epithelial barrier site and professional innate and adaptive immune cells in newborns against  
161 different respiratory viruses. Simultaneously, the study will assess the potential clinical and  
162 environmental factors including the status of the respiratory and gut microbiota that may  
163 influence these processes. Such comprehensive data sets are mandatory for the development  
164 of novel interventions that either target the host or the microbiota to early prevent or  
165 successfully treat severe RVIs in the future.

## 166 **Aim**

167 The MIAI study hypothesizes that: (i) the course and outcome of RVIs among individuals is  
168 related to the large variability in maturational trajectories of anti-viral immunity and (ii)  
169 environmental, lifestyle and dietary factors influence the early imprinting of anti-viral immunity  
170 in ways that either promote an increased susceptibility to RVIs and their complicated course

171 or support protective patterns (Figure 1). To verify these hypotheses, the MIAI birth cohort has  
172 been set up and includes healthy newborn infants born at term and their families. We aim at a  
173 comprehensive characterization of age-related differences and changes in the human immune  
174 system of the participants with a focus on the function of the cellular key players involved in  
175 the establishment of infections with RSV, IAV and SARS-CoV-2. Detailed phenotyping  
176 including factors potentially promoting and confounding the individual immune trajectory will  
177 be established; in particular, we are interested in the role of the developing microbiome on  
178 priming and regulating anti-RVI immunity. The specific aims of our study are:

- 179     ▪ Aim 1. To characterize the developmental changes of innate and adaptive immune  
180       responses to RVIs during the first year of life.
- 181     ▪ Aim 2. To determine the impact of sociodemographic background, clinical histories and  
182       environmental exposures including lifestyle, vaccinations and dietary factors on the  
183       trajectories of immune responses toward RVIs.
- 184     ▪ Aim 3. To elucidate whether there is a link between the microbiome establishment and  
185       anti-RVI immunity developing after birth.

186 In brief, we aim to provide insights into age-dependent programming and early-life changes of  
187 immunity toward RVIs in humans, highlighting training, priming and acquisition of tolerance, by  
188 collecting granular clinical metadata and performing comprehensive unbiased immune  
189 phenotyping using multi-omics approaches (Figure 2).

190



## 191 **METHODS AND ANALYSIS**

### 192 **Study design, cohort recruitment and follow-up visits**

193 The MIAI study is a single center, population-based birth cohort study at the University Hospital  
194 Würzburg. MIAI enrolls healthy newborn infants and their families and follows them throughout  
195 the first year of life (Figure 2). The ongoing recruitment started in February 2022 reaching  
196 about 170 infants up to date (with a 2-month interruption of recruitment due to an interim  
197 shortage of staff) (Table 1). Inclusion criteria encompass full-term, healthy neonates (37<sup>+0</sup> to  
198 41<sup>+6</sup> gestational weeks) born at the perinatal center of the University Hospital Würzburg,  
199 Germany, whose families' residency is located in the city of Würzburg or its administrative  
200 district. Exclusion criteria are amniotic infection syndrome, early-onset neonatal sepsis,  
201 congenital malformations, primary immunodeficiency or metabolic diseases, and remarkable  
202 language barriers. We will however do an earnest attempt to provide understandable  
203 information on our study in the native language of parents whose infants would be eligible thus  
204 aiming for a population-representative sample. The study recruits a convenience sample  
205 cohort; as such, the sample size is not calculated.

206 The first study visit is performed at the University Hospital for Women's health and Obstetrics  
207 Würzburg. Mothers of eligible infants are approached in the first three days after birth. After  
208 obtaining written informed consent from the parents, the baseline assessment takes place  
209 during the hospital stay of mother and infant. The follow-up appointments are performed one  
210 month, six months and one year after birth at the dedicated Pediatric Clinical Study Outpatient  
211 Service at the University Children's Hospital Würzburg. We are planning to track the study  
212 participants for long-term follow-up during childhood.

213 Overall, the acceptance of our study design with its follow-up appointments and sample  
214 collection is high with a relatively low drop-out rate of about 8% after one year as of May 2024,  
215 including families that relocated outside of Würzburg and its administrative district. The  
216 baseline characteristics of infants enrolled so far are presented in Table 1. Overall, the  
217 proportions of female and male infants are equal and the mean gestational age and birth weight  
218 appropriate and in line with the inclusion criterium of full-term birth. The largest number of

219 neonates was born vaginally (VD, 62%). Cesarean sections (CS, 38%) were in the majority of  
220 CS secondary (60%), i.e. after rupture of membranes, and only a minor part elective (37%) or  
221 due to emergency (3%). Half of the MIAI infants have older siblings which of 86% are visiting  
222 child care or school. The exposure to nicotine due to smoking family members affects 22% of  
223 the MIAI infants and 22% of the families have pets. The distribution of rural compared to urban  
224 living environments is even.

225 Characteristic values of pregnancy histories from infants enrolled in MIAI including maternal  
226 factors potentially impacting on the child's RVI immunity are listed in Table 2. The mean weight  
227 gain during pregnancies was 14 kg with a mean body mass index (BMI) of 29.4 ( $\pm$  5.8) at birth,  
228 not exceeding the limits recommended by obstetricians (29). The smaller number of mothers  
229 were primigravida (38%). During routine prenatal screenings, gestational diabetes mellitus was  
230 detected in 12% and gestational hypertension in 1.8%. The proportions of mothers vaccinated  
231 and/or recovered from IAV and SARS-CoV-2 infections are 48% and 97%, respectively. For  
232 the Influenza status, 52% of mothers did not know whether they have experienced an IAV  
233 infection, while only 3% of mothers did not know their SARS-CoV-2 status.

234 Table 3 summarizes anthropometric, medical and sociodemographic characteristics of  
235 participating parents. The mean age of mothers and fathers from the entire cohort is 32.8 ( $\pm$   
236 4.5) years and 35.3 ( $\pm$  5.4) years, respectively. The medical history data of the parents showed  
237 that 52% of the mothers and 24% of the fathers reported somatic disorders including allergies,  
238 psoriasis, neurodermatitis, cardiovascular disorders, obesity, thyroid disorders, as well as  
239 benign and malignant tumors. Mental disorders were indicated by 8.4% of the mothers and  
240 6.0% of the fathers. About 84% of the participating parents reported a Western European  
241 ethnicity and 79% of the mothers and 71% of the fathers were higher educated.

242

### 243 **Clinical data collection and data management**

244 Clinical data collection in MIAI is accomplished using tailored case report forms (CRFs) at each  
245 study timepoint (Table 4). At baseline, the histories of pregnancy and perinatal events are  
246 documented upon enrollment. From mothers and fathers, detailed information on demographic

247 and psychosocial background, family histories and lifestyles are requested. Particular attention  
248 is paid on maternal respiratory infections and vaccinations, before and during pregnancy. For  
249 the infants, we document at each study visit body measurements, the histories of vaccinations,  
250 infections, antibiotics including days of treatment, medications including inhalations, episodes  
251 of wheezing, skin rashes, allergies, hospital stays, and surgical procedures, diets including  
252 dietary supplements, lifestyle including the number of siblings and further household members,  
253 pets, residence (rural/urban), and stays abroad. In addition to the questionnaires, the MIAI  
254 pediatrician performs a comprehensive physical examination of the infant at each study  
255 appointment to monitor the overall health status including growth, physical and psychomotor  
256 development (Table 4).

257 To align with the FAIR data principles (Findable, Accessible, Interoperable, Reusable), the  
258 collected clinical data is managed to ensure high standards of data quality and usability. For  
259 data protection reasons, the participant's data is pseudonymized and assigned a unique study  
260 ID, which is documented in a separate and password-secured data file accessible by  
261 authorized MIAI staff only. A separate external data file is used as a contact database for  
262 tracking study participations and invitations to follow-up. The pseudonymized clinical data are  
263 double-entered into a password-secured REDCap database hosted at the Institute of Clinical  
264 Epidemiology and Biometry, University of Würzburg (IKE-B). Local password-secured copies  
265 of the database are generated. The database provides a comprehensive log/audit feature to  
266 record data input and changes based on user and time/date. By adhering to these FAIR  
267 principles, MIAI enhances the value of its clinical data, promoting its use in further research  
268 while maintaining high standards of data security and participant confidentiality.

269

## 270 **Collection and storage of biomaterials**

271 At each appointment, biomaterials from mothers (breast milk) and child (nasal brushes,  
272 pharyngeal swabs, skin swabs, stool, blood) are collected according to the schedule illustrated  
273 in Figure 3. We have chosen these timepoints to afford serial profiling while minimizing burden.  
274 Collection and storage of biomaterials are performed according to established standard

275 operating procedures (SOPs). After collection, biomaterials are immediately transferred to the  
276 adjacent laboratory for processing and biobanking.

### 277 *Breast milk samples*

278 As long as the mother is breastfeeding, breast milk/colostrum are sampled at each  
279 appointment. First, cells are pelleted by centrifugation and the skim milk and the fat layer are  
280 removed. The skim milk and fat layer are once more sharply centrifuged and aliquoted for  
281 storage at -80°C for later proteomic and microbial studies. The cells are cryopreserved at -  
282 152°C following multiple washing steps for later single cell studies.

### 283 *Nasal brushes*

284 Nasal brushing is an established method in pediatric pulmonology, e.g. essential for  
285 diagnosing primary ciliary dyskinesia, and provides a robust technique to generate AEC  
286 cultures in term and even preterm infants (12, 30). Brushings are taken from the inferior nasal  
287 turbinate using sterile interdental brushes (Rossmann, ISO sizes 4 or 5). After sampling,  
288 brushes are immediately placed in sterile tubes with transport medium (MEM without additives,  
289 antibiotics and antimycotics) and processed within 1 h of collection. Brushes are carefully  
290 moved up and down to scrape the cells off and collect them into the transport medium. Next,  
291 cells are centrifuged and supernatants stored as “nasal secretions” at -80°C for later proteomic,  
292 cytokine and microbiota profiling. The AECs are first expanded in submersion according to  
293 established protocols (31, 32) and then cryopreserved at -152°C. Some of the expanded AECs  
294 are directly differentiated at the air-liquid-interface (ALI) into a mature pseudostratified  
295 respiratory epithelium as described previously (32) and used for infection experiments with  
296 RSV (RSV-A-ON1, HRSV/A/DEU/H1/2013) (33) and IAV (H1N1, A/Netherlands/602/2009).  
297 Infections with SARS-CoV-2 (SARS-CoV-2/human/DEU/REGS-200701-CA/2020) are done  
298 later under biosafety level 3 conditions using cryopreserved AECs for differentiation at ALI.  
299 After infection, AECs are harvested and subjected to immediate FACS studies capturing cell  
300 composition and cell quality, generation of total RNA lysates for the analysis of transcriptomes  
301 (bulk RNASeq) and viral loads (qRT-PCR), and standardized cryopreservation (34) for later  
302 single cell (scRNASeq) and epigenetic (ATACSeq) studies. Apical and basolateral

303 supernatants are stored at -80°C for later analyses of proteome (Mass Spectrometry) and  
304 cytokine (FACS-based multiplex assays) profiles and virus plaque assays assessing viral  
305 progeny. This approach aims at generating data from each MIAI participant regarding  
306 individual airway epithelial immune responsiveness and function toward RVIs at birth and at 1  
307 year of life (Figure 3). The strategy is based on previous reports that ALI-AEC models  
308 established from human primary AECs recapitulate well the *in vivo* phenotype of the airway  
309 epithelium (12, 35, 36).

#### 310 *Pharyngeal and skin swabs*

311 Three pharyngeal swabs and two skin swabs are collected, respectively. One of the respective  
312 swabs is transferred to a sterile tube containing sterile PBS with 10% BSA (for protein  
313 stabilization) and stored at -80°C for protein and cytokine measurements. The other two  
314 respective swabs are stored at -80°C without additives for later DNA isolation and microbiota  
315 studies (16S rRNA sequencing and shotgun metagenomics).

#### 316 *Stool samples*

317 Stool samples are collected by the MIAI staff from diapers and immediately transferred to -  
318 80°C. In cases where stool collection at the respective appointments not succeeds, we use  
319 samples collected and stored at 4°C by the parents at the evening before or the morning of the  
320 follow-up appointment for biobanking at -80°C. Three 1.5 ml tubes are filled with stool,  
321 respectively, one of which contains 600 µl DNA/RNA shield (Zymo Research, California, USA)  
322 to preserve nucleic acids for 16S rRNA sequencing and metagenomics studies. The other two  
323 stool aliquots are stored without additives and used for the extraction and analysis of  
324 immunoactive proteins such as S100-alarmins (37) and cytokine profiles according to  
325 established protocols (38).

#### 326 *Blood samples*

327 Cord blood is collected preemptively from all eligible neonates but only processed when  
328 parents agree on participation in the MIAI study. If no consent is given, cord blood samples  
329 are discarded. The volumes of drawn peripheral venous blood samples align to the pediatric  
330 guidelines of the European Medical Agency, which recommends that blood collection for

331 research purposes should be at maximum 1% of total blood volume (i.e., 0.8 ml/kg body  
332 weight). At the first sampling timepoint, we seek to combine blood collection in MIAI with the  
333 routine newborn screening taken between 36 and 72 hours of life. Blood samples are  
334 processed within 1 h after collection. The serum samples are stored at -80 °C and used for  
335 cytokine, metabolome and serological studies including quantification of antibody titers against  
336 RSV, IAV and SARS-CoV-2. From EDTA samples, peripheral blood mononuclear cells  
337 (PBMCs) are isolated and profiled using established multidimensional FACS panels (39–43).  
338 One part of isolated PBMCs is cryopreserved at -152°C for later single cell, epigenetic and  
339 experimental studies (e.g., analysis of T and B cell subsets and receptor repertoires including  
340 virus-specific effector T cells). To avoid functional impairment of the myeloid cells due to  
341 cryopreservation, monocytes are directly isolated from the other part of isolated PBMCs as  
342 described previously (44, 45) and infected with RSV and IAV. After infection, total RNA lysates  
343 are generated and culture supernatants harvested and both stored at -80°C for the analysis of  
344 transcriptomes, viral loads, proteome and cytokine profiles, and viral progeny.

345

#### 346 **Data analysis and statistics**

347 Omics data analysis in MIAI will be performed on different levels as results from transcriptomics  
348 including lymphocyte receptor repertoires, epigenomics, 16S rRNA gene and shot-gun  
349 metagenomics sequencing, breast milk and serum metabolomics and proteomics including  
350 cytokine and serologic profiles. We aim at subjecting full longitudinal sample series from 400  
351 infants to study the omics profiles. Given the longitudinal nature of our study set up, samples  
352 previewed for these studies will be randomized to reduce batch effects. Initially, each omics  
353 dataset will undergo individual analysis to elucidate its unique characteristics. Subsequent  
354 exploratory analyses will determine the necessity of batch correction for each dataset. If  
355 required, corrections will be implemented using ComBat batch method to normalize across  
356 multiple analytical runs and WithinVariation function implemented in the R mixOmics package  
357 and to normalize features as change over time within each child. Post-correction, we will  
358 validate that the biological variability is preserved and that no artifacts were introduced. We

359 will perform omics-specific statistical analyses and co-expression network analyses using  
360 hCoCena (46, 47) to identify and characterize differential subgroups with greater precision. All  
361 data generated including standardized meta-data will be quality-controlled and gathered within  
362 a unified framework following standards for omics and clinical measurement representation,  
363 allowing within-study integration and comparative analysis with previous studies according to  
364 FAIR data principles.

365 Differential trajectorial endotypes will be identified using KmL (k-means for longitudinal data)  
366 clustering. To determine the optimal number of clusters (k), we will run 1000 permutations,  
367 utilizing the Harabasz criterion (Calinski-Harabasz index) to evaluate clustering validity. This  
368 methodology will facilitate a nuanced, continuous classification of patients, transcending binary  
369 categorization and allowing also for a more detailed representation of endotypic variation.  
370 Specialized software packages for dataset-specific imputation will be employed to address any  
371 missing data points, ensuring robust classification of immune and microbiome trajectories  
372 across the cohort. Advanced statistical methods and machine learning algorithms will be  
373 integrated into the analysis pipeline to enhance the precision and reliability of the endotype  
374 classification.

375 To elucidate the relationships between specific immunotypes, respiratory or gut microbiome  
376 profiles, environmental factors, and clinical outcomes, we have created two specialized  
377 software tools, *metadeconfoundR* (48) and *longdat* (49). These tools enable comprehensive  
378 mixed omics data analysis while managing the complex interplay of numerous demographic,  
379 therapeutic, and disease-related variables. *MetadeconfoundR* is designed to facilitate the  
380 identification of biomarkers within cross-sectional multi-omics medical datasets, while carefully  
381 accounting for confounders. Initially, it identifies significant associations between features and  
382 metadata using nonparametric tests such as the Mann-Whitney U test. Subsequently, it  
383 assesses and adjusts for confounding effects among these metadata variables through *post-*  
384 *hoc* nested linear model comparison. Importantly, *metadeconfoundR* can integrate previously  
385 established knowledge of confounders, such as drug associations from the MetaCardis cohort,  
386 into its analysis. This inclusion aids in maintaining robust conclusions even when new datasets

387 lack the statistical power to independently identify these confounders. LongDat, meanwhile, is  
388 an R package tailored for analyzing longitudinal multivariable data, effectively handling a wide  
389 array of covariates. It distinguishes direct from indirect intervention effects and identifies key  
390 covariates that may act as mechanistic intermediates. Although primarily focused on  
391 longitudinal microbiome data, LongDat's versatility allows application to various data types  
392 including binary, categorical, and continuous data. Comparative testing against other analytical  
393 tools like MaAsLin2, ANCOM, Igpr, and ZIBR has demonstrated LongDat's superior  
394 performance in terms of accuracy, runtime, and memory efficiency, making it an ideal choice  
395 for high-dimensional longitudinal studies where multiple covariates are a consideration.

396

### 397 **Next steps and outlook**

398 To gain a comprehensive picture of how immune profile development including cellular  
399 responses to RVIs varies amongst individuals, we are in the process to analyze the  
400 biomaterials by a multi-omics approach. This encompasses transcriptomic, epigenomic,  
401 metagenomic, and metabolomic layers. These data are extended by cellular phenotyping using  
402 high-dimensional flow cytometry and the innate and adaptive immune responses to IAV, RSV  
403 and SARS-CoV-2. Next, the omic phenotypes will be integrated with large clinical data sets.

404 As most of the one-year-old infants have not yet attended a day care center, which is an  
405 important contributor to microbiome maturation (50, 51), we continue the longitudinal  
406 assessment of MIAI participants by the means of annual questionnaires until regular follow-up  
407 at early school age. Our long-term vision is to disentangle the role of early programming of  
408 anti-viral immunity for the susceptibility to RVIs and also non-communicable diseases such as  
409 asthma, obesity or autoimmune disorders. Future plans include data collection of participants  
410 until 12 years of participants' age, which would allow to investigate how differences in omics  
411 immune and microbiome endotypes translate into population differences in clinical outcomes  
412 and susceptibility to RVIs.

413



## 414 **DISCUSSION**

415 Considering the impact of the recent SARS-CoV-2 pandemic (52) or previous pandemics and  
416 epidemics due to IAV and RSV on human health (6, 53, 54), our knowledge about the ontogeny  
417 of immunity towards RVIs and the factors determining the developmental variability is little.  
418 Except for pre-existing co-morbidities and primary immunodeficiencies, hitherto, only the  
419 acquisition of autoantibodies against type I IFNs (55) and genetic variants, particularly in  
420 cytokines and pattern recognition receptors (56), could be linked to severe RVI cases, though  
421 only in a minor proportion of RVIs, and explain inter-population variability of anti-RVI immunity.  
422 We recently initiated the recruitment of a birth cohort of healthy newborn infants in Germany  
423 that has been designed to investigate in particular the development of immunity towards RVIs  
424 in early childhood. The data shown in the present manuscript reflect an initial characterization  
425 of the MIAI cohort. Comparison of the structure of the current MIAI cohort with those reported  
426 from other recruiting maternal or term infant birth cohorts in Europe show similar distributions  
427 and rates of e.g. sex, gestational age, birth weight, multiple births, mode of delivery, first-time  
428 mothers, number of siblings, maternal age and BMI, gestational diabetes and hypertension,  
429 infections during pregnancy, and parental education and smoking (57–60). It is gratifying that  
430 in MIAI the drop-out rate of 8% is low in comparison to other birth cohorts which also perform  
431 repeated collection of biomaterials, e.g., the SweMaMi cohort (59) and KUNO-Kids cohort (57)  
432 that recorded 40-50% of lost 1-year follow-ups. Hence, we assume that the MIAI cohort will be  
433 representative of an infant population in Central Europe.

434 The common immunological finding in severe IAV, RSV and SARS-CoV-2 related infectious  
435 diseases is an exceeding cytokine release (61–64), suggesting a strong involvement of a  
436 systemic inflammatory response due to a lack of viral clearance at the epithelial barrier site or  
437 its breakage. Therefore, our first research focus in MIAI will lay on the age-dependent  
438 immunological profiling of the airway epithelium and blood monocytes, as key mediators of  
439 systemic cytokine storms during severe RVIs (65, 66), and the identification of demographic,  
440 clinical, environmental, lifestyle and dietary factors on the trajectories of their immune  
441 responsiveness toward RVIs. Interestingly, a previous study revealed a link between a low

442 susceptibility of monocytes to IAV infections and high basal monocyte activation, which the  
443 authors assumed to be driven by environmental factors and/or weak-effect genetic variants  
444 that remain to be identified (67).

445 A plethora of studies report on distinct gut and respiratory microbiota compositions that are  
446 associated with an increased risk of RVIs with either IAV, RSV or SARS-CoV-2 (13, 15, 16,  
447 18–20, 22, 68–70). How exactly such reported microbiota profiles influence anti-RVI immunity  
448 remains largely elusive. To what extent the developmental changes of the microbiota shape  
449 the postnatal ontogeny of the development of anti-RVI immunity is even less understood. The  
450 MIAI study will help to characterize differential trajectories of anti-RVI immunity and improve  
451 our knowledge about influencing factors, in particular the influence of the gut and respiratory  
452 microbiota.

453 The strength of the MIAI study is the population-based approach and the standardized in-depth  
454 longitudinal characterization of healthy individuals at birth and the comprehensive analysis of  
455 preserved biomaterials. The usage of cutting-edge multi-omics technology for the generation  
456 of longitudinal immune-microbiome profiles combined with functional profiling of the cellular  
457 immune response against RVIs make this cohort study a unique approach. Finally, by ensuring  
458 that the multi-omics-based profiles are integrated with highly granular clinical information, we  
459 are confident to identify factors that either promote or impede the development of immunity  
460 against RVIs. As in other population-based studies, we observe a bias toward high  
461 socioeconomic status among MIAI participants. Technically, the study has its limitation in the  
462 standardization of stool sample collection as sometimes home sampling is required, which  
463 precludes immediate freezing at -80°C as warranted by on-site visit sampling through the staff.  
464 With respect to clinical information, the study would benefit from an app-based monitoring that  
465 allows immediate reporting of acute infections that in case of respiratory symptoms then would  
466 prompt viral diagnostics. We aim at a timely implementation of this important add-on.

467 In conclusion, the MIAI birth cohort study expects to generate data that give a holistic picture  
468 on the variability of the maturation of immunity towards RVIs in early life and identify host and  
469 environmental factors that influence the trajectory. By linking differential trajectories along with

470 clinical information on incidences and outcomes of RVIs to specific immune features, MIAI will  
471 pave the way for in-depth elucidation of molecular mechanisms, which is the basis for the  
472 development of age-specific host-directed treatment strategies against severe courses of RVIs  
473 (e.g., (anti-)cytokine biologicals, tailored cell- or RNA-technology-based therapies). Of  
474 particular importance will be the identification of factors shaping anti-RVI immunity, as this is  
475 essential to design personalized interventions such as metabolic, probiotic and/or dietary  
476 measures that promote developing competent anti-RVI immunity in early life thus preventing  
477 severe RVIs in the long term.

478

## 479 **ETHICS AND DISSEMINATION**

480 This study was reviewed and approved by the Institutional Review Boards of the University of  
481 Würzburg (no. 13/22\_z-am). The study is also registered on the German Clinical Trials  
482 Register (DRKS). The MIAI cohort is being conducted in compliance with all pertinent  
483 legislation and directives and following the guidelines on human biobanks for research and  
484 other relevant directives on research ethics. All parents have before inclusion signed informed  
485 consent in accordance with the Declaration of Helsinki II. Special emphasis is placed on  
486 privacy and safety of data.

487 The proposed research is anticipated to generate a significant body of knowledge of interest  
488 to a wide range of stakeholders, from the clinical (pediatricians and other health professionals)  
489 to the research community but also to the public. Hence, a multilayered dissemination strategy  
490 will be followed and builds on cross-media communication to reach the specific target groups  
491 through their preferred media and information platforms. Local, national and international  
492 meetings and publication in peer-reviewed medical journals and via websites are used to  
493 inform for the scientific community. Once a year, study participants and healthcare  
494 professionals are invited by the study team to join online video meetings where they can  
495 discuss medical questions and pose any questions or comments on the study procedures. In  
496 addition, participating families will be provided with a copy of this publication to disseminate  
497 the MIAI study results.

498

## 499 **Acknowledgements**

500 We would like to extend our gratitude towards families including the mothers, fathers and their  
501 infants included in the study, the sample collection team and recruitment team. This study  
502 would not have been possible without the work of a large group of staff members from the  
503 different departments. In particular, we acknowledge the contributions of the student assistants  
504 Lucia Baumgartner, Theresa Wurm and Leon Fagner, the entire team of midwives and the  
505 maternity unit including the lactation specialists.

506

## 507 **Author contributions**

508 Study design: MW, SP, CH, DV. Project management: CRH, CH, DV. Recruitment: RK, CRH,  
509 MK, EF, JF, MW, JB, CV, MM, JM, AW, DV. Biobanking: JS, MR. Data management: RK,  
510 CRH, MW, SP, MK, EF, JF, CV, MM, JM, TK, PUH, DV. Experiments: JS, MR, MW, JH, JD,  
511 HM, SS, MS, SH, TP, SB, LD, Sagar, TU, SKF-S. Data analysis: CRH, MW, SP, JH, JD, HM,  
512 SB, UL, Sagar, TU, SKF-S, DV. Data interpretation: CRH, MW, SP, JH, JD, HM, MS, SH, TP,  
513 SB, LD, UL, Sagar, TU, SKF-S, CH, DV. Writing: RK, UL, TU, CH, DV. Editing and revising: all  
514 authors. Funding acquisition: CH, DV.

515

## 516 **Competing interests**

517 The other authors declare no competing interests.

518

## 519 **Funding**

520 This work is supported by grants from Deutsche Forschungsgemeinschaft (DFG, German  
521 Research Foundation) to DV (VI 538-9-1), CH (HA-6409-5-1) and TU (UL 521/1-1). The  
522 following other funding sources support the project: the Federal Ministry of Education and  
523 Research (BMBF) to SP, CH and DV (PROSPER; 01EK2103B and 01EK2103A, respectively);  
524 the DFG to SP (PI 1512/1-3) and DV (VI 538/6-3); the DFG SFB 1583/1 (“DECIDE”) project  
525 number 492620490 to DV and SB; the DFG TRR 359 (“PILOT”) project number 491676693 to

526 DV; the DFG Germany`s Excellence Strategy – EXC 2155 ‘RESIST’ – Project ID 390874280  
527 to DV and TP; the BMBF Advanced Clinician Scientist Program (“INTERACT”, project number  
528 01EO2108) to HM.

529

530 **FIGURE LEGENDS**

531 **Figure 1. Hypothesis of the MIAI study.** The hypothesis of the MIAI study is that the  
532 maturation of anti-viral immunity toward RVIs in early life underlies a large developmental  
533 variability, which is imprinted by clinical and environmental factors such as dietary habits,  
534 lifestyle, and particularly the composition and function of the co-evolving respiratory and gut  
535 microbiota.

536  
537 **Figure 2. Design MIAI study.** The MIAI study encompasses four phases starting with  
538 recruitment of term healthy infants and follow-up visits at defined timepoints. At each  
539 appointment, clinical data and biomaterials are collected for storage and/or usage in *ex vivo*  
540 respiratory viral infection models. Multi-omics datasets will be generated including immune  
541 profiles, transcriptomics, epigenomics, proteomics, metabolomics and microbiomics. To gain  
542 clinical and scientific knowledge, overall integration of mixed omics data shall enable  
543 participant stratification based on marker patterns linking to RVI susceptibility and reveal host  
544 and environmental factors imprinting anti-RVI immunity in the first year of life.

545  
546 **Figure 3. Collection of biomaterials in MIAI.** Biomaterials collected in the MIAI cohort include  
547 breast milk, nasal brushes and secretions, pharyngeal swabs, skin swabs, stool, cord blood  
548 and peripheral blood (EDTA and serum). They are obtained at the defined study time points,  
549 i.e. either at day 1-3 and/or day 30 of life and/or at 6 months and/or 1 year following birth.

550 (Created with BioRender.com)

551

552 **REFERENCES**

- 553 1. Zhu G, Xu D, Zhang Y, Wang T, Zhang L, Gu W, et al. Epidemiological characteristics of  
554 four common respiratory viral infections in children. *Virology* (2021) **18**:10.  
555 doi:10.1186/s12985-020-01475-y
- 556 2. Nair H, Nokes DJ, Gessner BD, Dherani M, Madhi SA, Singleton RJ, et al. Global burden  
557 of acute lower respiratory infections due to respiratory syncytial virus in young children: a  
558 systematic review and meta-analysis. *Lancet* (2010) **375**:1545–55. doi:10.1016/S0140-  
559 6736(10)60206-1
- 560 3. Openshaw PJ, Chiu C, Culley FJ, Johansson C. Protective and Harmful Immunity to RSV  
561 Infection. *Annu Rev Immunol* (2017) **35**:501–32. doi:10.1146/annurev-immunol-051116-  
562 052206
- 563 4. Shi T, McAllister DA, O'Brien KL, Simoes EA, Madhi SA, Gessner BD, et al. Global,  
564 regional, and national disease burden estimates of acute lower respiratory infections due  
565 to respiratory syncytial virus in young children in 2015: a systematic review and modelling  
566 study. *Lancet* (2017) **390**:946–58. doi:10.1016/S0140-6736(17)30938-8
- 567 5. Smyth RL, Openshaw PJ. Bronchiolitis. *Lancet* (2006) **368**:312–22. doi:10.1016/S0140-  
568 6736(06)69077-6
- 569 6. GBD 2017 Influenza Collaborators. Mortality, morbidity, and hospitalisations due to  
570 influenza lower respiratory tract infections, 2017: an analysis for the Global Burden of  
571 Disease Study 2017. *Lancet Respir Med* (2019) **7**:69–89. doi:10.1016/S2213-  
572 2600(18)30496-X
- 573 7. Castagnoli R, Votto M, Licari A, Brambilla I, Bruno R, Perlini S, et al. Severe Acute  
574 Respiratory Syndrome Coronavirus 2 (SARS-CoV-2) Infection in Children and  
575 Adolescents: A Systematic Review. *JAMA Pediatr* (2020) **174**:882–9.  
576 doi:10.1001/jamapediatrics.2020.1467
- 577 8. Zhang C, Gu J, Chen Q, Deng N, Li J, Huang L, et al. Clinical and epidemiological  
578 characteristics of pediatric SARS-CoV-2 infections in China: A multicenter case series.  
579 *PLoS Med* (2020) **17**:e1003130. doi:10.1371/journal.pmed.1003130

- 580 9. Chou J, Thomas PG, Randolph AG. Immunology of SARS-CoV-2 infection in children. *Nat*  
581 *Immunol* (2022) **23**:177–85. doi:10.1038/s41590-021-01123-9
- 582 10. Loske J, Röhmel J, Lukassen S, Stricker S, Magalhães VG, Liebig J, et al. Pre-activated  
583 antiviral innate immunity in the upper airways controls early SARS-CoV-2 infection in  
584 children. *Nat Biotechnol* (2022) **40**:319-324. doi:10.1038/s41587-021-01037-9
- 585 11. Yoshida M, Worlock KB, Huang N, Lindeboom RG, Butler CR, Kumasaka N, et al. Local  
586 and systemic responses to SARS-CoV-2 infection in children and adults. *Nature* (2022)  
587 **602**:321–7. doi:10.1038/s41586-021-04345-x
- 588 12. Woodall MN, Cujba A-M, Worlock KB, Case K-M, Masonou T, Yoshida M, et al. Age-  
589 specific nasal epithelial responses to SARS-CoV-2 infection. *Nat Microbiol* (2024) **9**:1293-  
590 1311. doi:10.1038/s41564-024-01658-1
- 591 13. Lynch SV, Pedersen O. The Human Intestinal Microbiome in Health and Disease. *N Engl*  
592 *J Med* (2016) **375**:2369–79. doi:10.1056/NEJMra1600266
- 593 14. Di Simone SK, Rudloff I, Nold-Petry CA, Forster SC, Nold MF. Understanding respiratory  
594 microbiome-immune system interactions in health and disease. *Sci Transl Med* (2023)  
595 **15**:eabq5126. doi:10.1126/scitranslmed.abq5126
- 596 15. Biesbroek G, Tsivtsivadze E, Sanders EA, Montijn R, Veenhoven RH, Keijser BJ, et al.  
597 Early respiratory microbiota composition determines bacterial succession patterns and  
598 respiratory health in children. *Am J Respir Crit Care Med* (2014) **190**:1283–92.  
599 doi:10.1164/rccm.201407-1240OC
- 600 16. Bosch, Astrid A T M, de Steenhuijsen Piters, Wouter A A, van Houten MA, Chu, Mei Ling  
601 J N, Biesbroek G, Kool J, et al. Maturation of the Infant Respiratory Microbiota,  
602 Environmental Drivers, and Health Consequences. A Prospective Cohort Study. *Am J*  
603 *Respir Crit Care Med* (2017) **196**:1582–90. doi:10.1164/rccm.201703-0554OC
- 604 17. de Steenhuijsen Piters, Wouter A A, Binkowska J, Bogaert D. Early Life Microbiota and  
605 Respiratory Tract Infections. *Cell Host Microbe* (2020) **28**:223–32.  
606 doi:10.1016/j.chom.2020.07.004



- 607 18. de Steenhuisen Piters, Wouter A A, Watson RL, Koff EM de, Hasrat R, Arp K, Chu, Mei  
608 Ling J N, et al. Early-life viral infections are associated with disadvantageous immune and  
609 microbiota profiles and recurrent respiratory infections. *Nat Microbiol* (2022) **7**:224–37.  
610 doi:10.1038/s41564-021-01043-2
- 611 19. Teo SM, Mok D, Pham K, Kusel M, Serralha M, Troy N, et al. The infant nasopharyngeal  
612 microbiome impacts severity of lower respiratory infection and risk of asthma development.  
613 *Cell Host Microbe* (2015) **17**:704–15. doi:10.1016/j.chom.2015.03.008
- 614 20. Antunes KH, Fachi JL, Paula R de, Da Silva EF, Pral LP, Dos Santos AA, et al. Microbiota-  
615 derived acetate protects against respiratory syncytial virus infection through a GPR43-type  
616 1 interferon response. *Nat Commun* (2019) **10**:3273. doi:10.1038/s41467-019-11152-6
- 617 21. Ngo VL, Lieber CM, Kang H-J, Sakamoto K, Kuczma M, Plemper RK, et al. Intestinal  
618 microbiota programming of alveolar macrophages influences severity of respiratory viral  
619 infection. *Cell Host Microbe* (2024) **32**:335–348.e8. doi:10.1016/j.chom.2024.01.002
- 620 22. Harding JN, Siefker D, Vu L, You D, DeVincenzo J, Pierre JF, et al. Altered gut microbiota  
621 in infants is associated with respiratory syncytial virus disease severity. *BMC Microbiol*  
622 (2020) **20**:140. doi:10.1186/s12866-020-01816-5
- 623 23. Zhao Y, Dong BR, Hao Q. Probiotics for preventing acute upper respiratory tract infections.  
624 *Cochrane Database Syst Rev* (2022) **8**:CD006895.  
625 doi:10.1002/14651858.CD006895.pub4
- 626 24. Du T, Lei A, Zhang N, Zhu C. The Beneficial Role of Probiotic Lactobacillus in Respiratory  
627 Diseases. *Front Immunol* (2022) **13**:908010. doi:10.3389/fimmu.2022.908010
- 628 25. Shi HY, Zhu X, Li WL, Mak JW, Wong SH, Zhu ST, et al. Modulation of gut microbiota  
629 protects against viral respiratory tract infections: a systematic review of animal and clinical  
630 studies. *Eur J Nutr* (2021) **60**:4151–74. doi:10.1007/s00394-021-02519-x
- 631 26. Nesbitt H, Burke C, Hagi M. Manipulation of the Upper Respiratory Microbiota to Reduce  
632 Incidence and Severity of Upper Respiratory Viral Infections: A Literature Review. *Front*  
633 *Microbiol* (2021) **12**:713703. doi:10.3389/fmicb.2021.713703

- 634 27. Harper A, Vijayakumar V, Ouwehand AC, Haar J ter, Obis D, Espadaler J, et al. Viral  
635 Infections, the Microbiome, and Probiotics. *Front Cell Infect Microbiol* (2020) **10**:596166.  
636 doi:10.3389/fcimb.2020.596166
- 637 28. Suez J, Zmora N, Segal E, Elinav E. The pros, cons, and many unknowns of probiotics.  
638 *Nat Med* (2019) **25**:716–29. doi:10.1038/s41591-019-0439-x
- 639 29. Rasmussen KM, Catalano PM, Yaktine AL. New guidelines for weight gain during  
640 pregnancy: what obstetrician/gynecologists should know. *Curr Opin Obstet Gynecol*  
641 (2009) **21**:521–6. doi:10.1097/GCO.0b013e328332d24e
- 642 30. Martens A, Amann G, Schmidt K, Gaupmann R, Böhm B, Dehlink E, et al. An optimized,  
643 robust and reproducible protocol to generate well-differentiated primary nasal epithelial  
644 models from extremely premature infants. *Sci Rep* (2019) **9**:20069. doi:10.1038/s41598-  
645 019-56737-9
- 646 31. Jonsdottir HR, Dijkman R. Characterization of human coronaviruses on well-differentiated  
647 human airway epithelial cell cultures. *Methods Mol Biol* (2015) **1282**:73–87.  
648 doi:10.1007/978-1-4939-2438-7\_8
- 649 32. Schreiber A, Viemann D, Schöning J, Schloer S, Mecate Zambrano A, Brunotte L, et al.  
650 The MEK1/2-inhibitor ATR-002 efficiently blocks SARS-CoV-2 propagation and alleviates  
651 pro-inflammatory cytokine/chemokine responses. *Cell Mol Life Sci* (2022) **79**:65.  
652 doi:10.1007/s00018-021-04085-1
- 653 33. Sake SM, Zhang X, Rajak MK, Urbanek-Quaing M, Carpentier A, Gunesch AP, et al. Drug  
654 repurposing screen identifies Ionafarnib as respiratory syncytial virus fusion protein  
655 inhibitor. *Nat Commun* (2024) **15**:1173. doi:10.1038/s41467-024-45241-y
- 656 34. Domenico E de, Bonaguro L, Schulte-Schrepping J, Becker M, Händler K, Schultze JL.  
657 Optimized workflow for single-cell transcriptomics on infectious diseases including COVID-  
658 19. *STAR Protoc* (2020) **1**:100233. doi:10.1016/j.xpro.2020.100233
- 659 35. Essaidi-Laziosi M, Brito F, Benaoudia S, Royston L, Cagno V, Fernandes-Rocha M, et al.  
660 Propagation of respiratory viruses in human airway epithelia reveals persistent virus-

- 661 specific signatures. *J Allergy Clin Immunol* (2018) **141**:2074–84.  
662 doi:10.1016/j.jaci.2017.07.018
- 663 36. Iverson E, Kaler L, Agostino EL, Song D, Duncan GA, Scull MA. Leveraging 3D Model  
664 Systems to Understand Viral Interactions with the Respiratory Mucosa. *Viruses* (2020) **12**.  
665 doi:10.3390/v12121425
- 666 37. Viemann D. S100-Alarmins Are Essential Pilots of Postnatal Innate Immune Adaptation.  
667 *Front Immunol* (2020) **11**:688. doi:10.3389/fimmu.2020.00688
- 668 38. Willers M, Ulas T, Völlger L, Vogl T, Heinemann AS, Pirr S, et al. S100A8 and S100A9 Are  
669 Important for Postnatal Development of Gut Microbiota and Immune System in Mice and  
670 Infants. *Gastroenterology* (2020) **159**:2130-2145.e5. doi:10.1053/j.gastro.2020.08.019
- 671 39. Dirks J, Andres O, Paul L, Manukjan G, Schulze H, Morbach H. IgD shapes the pre-  
672 immune naïve B cell compartment in humans. *Front Immunol* (2023) **14**:1096019.  
673 doi:10.3389/fimmu.2023.1096019
- 674 40. Dirks J, Viemann D, Beyersdorf N, Härtel C, Morbach H. Insights into B-cell ontogeny  
675 inferred from human immunology. *Eur J Immunol* (2023) **53**:e2250116.  
676 doi:10.1002/eji.202250116
- 677 41. León-Lara X, Fichtner AS, Willers M, Yang T, Schaper K, Riemann L, et al.  $\gamma\delta$  T cell  
678 profiling in a cohort of preterm infants reveals elevated frequencies of CD83+  $\gamma\delta$  T cells in  
679 sepsis. *J Exp Med* (2024) **221**. doi:10.1084/jem.20231987
- 680 42. Morbach H, Eichhorn EM, Liese JG, Girschick HJ. Reference values for B cell  
681 subpopulations from infancy to adulthood. *Clin Exp Immunol* (2010) **162**:271–9.  
682 doi:10.1111/j.1365-2249.2010.04206.x
- 683 43. Ravens S, Fichtner AS, Willers M, Torkornoo D, Pirr S, Schöning J, et al. Microbial  
684 exposure drives polyclonal expansion of innate  $\gamma\delta$  T cells immediately after birth. *Proc Natl*  
685 *Acad Sci U S A* (2020) **117**:18649–60. doi:10.1073/pnas.1922588117
- 686 44. Austermann J, Friesenhagen J, Fassl SK, Petersen B, Ortkras T, Burgmann J, et al.  
687 Alarmins MRP8 and MRP14 induce stress tolerance in phagocytes under sterile  
688 inflammatory conditions. *Cell Rep* (2014) **9**:2112–23. doi:10.1016/j.celrep.2014.11.020

- 689 45. Ulas T, Pirr S, Fehlhaber B, Bickes MS, Loof TG, Vogl T, et al. S100-alarmin-induced  
690 innate immune programming protects newborn infants from sepsis. *Nat Immunol* (2017)  
691 **18**:622–32. doi:10.1038/ni.3745
- 692 46. Holsten L, Dahm K, Oestreich M, Becker M, Ulas T. hCoCena: A toolbox for network-  
693 based co-expression analysis and horizontal integration of transcriptomic datasets. *STAR*  
694 *Protoc* (2024) **5**:102922. doi:10.1016/j.xpro.2024.102922
- 695 47. Oestreich M, Holsten L, Agrawal S, Dahm K, Koch P, Jin H, et al. hCoCena: horizontal  
696 integration and analysis of transcriptomics datasets. *Bioinformatics* (2022) **38**:4727–34.  
697 doi:10.1093/bioinformatics/btac589
- 698 48. Forslund SK, Chakaroun R, Zimmermann-Kogadeeva M, Markó L, Aron-Wisnewsky J,  
699 Nielsen T, et al. Combinatorial, additive and dose-dependent drug-microbiome  
700 associations. *Nature* (2021) **600**:500–5. doi:10.1038/s41586-021-04177-9
- 701 49. Chen C-Y, Löber U, Forslund SK. LongDat: an R package for covariate-sensitive  
702 longitudinal analysis of high-dimensional data. *Bioinform Adv* (2023) **3**:vbad063.  
703 doi:10.1093/bioadv/vbad063
- 704 50. Amir A, Erez-Granat O, Braun T, Sosnovski K, Hadar R, BenShoshan M, et al. Gut  
705 microbiome development in early childhood is affected by day care attendance. *NPJ*  
706 *Biofilms Microbiomes* (2022) **8**:2. doi:10.1038/s41522-021-00265-w
- 707 51. Stewart CJ, Ajami NJ, O'Brien JL, Hutchinson DS, Smith DP, Wong MC, et al. Temporal  
708 development of the gut microbiome in early childhood from the TEDDY study. *Nature*  
709 (2018) **562**:583–8. doi:10.1038/s41586-018-0617-x
- 710 52. Msemburi W, Karlinsky A, Knutson V, Aleshin-Guendel S, Chatterji S, Wakefield J. The  
711 WHO estimates of excess mortality associated with the COVID-19 pandemic. *Nature*  
712 (2023) **613**:130–7. doi:10.1038/s41586-022-05522-2
- 713 53. Hall CB, Weinberg GA, Iwane MK, Blumkin AK, Edwards KM, Staat MA, et al. The burden  
714 of respiratory syncytial virus infection in young children. *N Engl J Med* (2009) **360**:588–98.  
715 doi:10.1056/NEJMoa0804877

- 716 54. Li Y, Wang X, Blau DM, Caballero MT, Feikin DR, Gill CJ, et al. Global, regional, and  
717 national disease burden estimates of acute lower respiratory infections due to respiratory  
718 syncytial virus in children younger than 5 years in 2019: a systematic analysis. *Lancet*  
719 (2022) **399**:2047–64. doi:10.1016/S0140-6736(22)00478-0
- 720 55. Zhang Q, Bastard P, Cobat A, Casanova J-L. Human genetic and immunological  
721 determinants of critical COVID-19 pneumonia. *Nature* (2022) **603**:587–98.  
722 doi:10.1038/s41586-022-04447-0
- 723 56. Forbester JL, Humphreys IR. Genetic influences on viral-induced cytokine responses in  
724 the lung. *Mucosal Immunol* (2021) **14**:14–25. doi:10.1038/s41385-020-00355-6
- 725 57. Brandstetter S, Toncheva AA, Niggel J, Wolff C, Gran S, Seelbach-Göbel B, et al. KUNO-  
726 Kids birth cohort study: rationale, design, and cohort description. *Mol Cell Pediatr* (2019)  
727 **6**:1. doi:10.1186/s40348-018-0088-z
- 728 58. Pangratz-Fuehrer S, Genzel-Boroviczény O, Bodensohn WE, Eisenburger R,  
729 Scharpenack J, Geyer PE, et al. Cohort profile: the MUNICH Preterm and Term Clinical  
730 study (MUNICH-PreTCI), a neonatal birth cohort with focus on prenatal and postnatal  
731 determinants of infant and childhood morbidity. *BMJ Open* (2021) **11**:e050652.  
732 doi:10.1136/bmjopen-2021-050652
- 733 59. Fransson E, Gudnadottir U, Hugerth LW, Itzel EW, Hamsten M, Boulund F, et al. Cohort  
734 profile: the Swedish Maternal Microbiome project (SweMaMi) - assessing the dynamic  
735 associations between the microbiome and maternal and neonatal adverse events. *BMJ*  
736 *Open* (2022) **12**:e065825. doi:10.1136/bmjopen-2022-065825
- 737 60. Pandolfini C, Clavenna A, Cartabia M, Campi R, Bonati M. National, longitudinal NASCITA  
738 birth cohort study to investigate the health of Italian children and potential influencing  
739 factors. *BMJ Open* (2022) **12**:e063394. doi:10.1136/bmjopen-2022-063394
- 740 61. Bohmwald K, Gálvez NM, Canedo-Marroquín G, Pizarro-Ortega MS, Andrade-Parra C,  
741 Gómez-Santander F, et al. Contribution of Cytokines to Tissue Damage During Human  
742 Respiratory Syncytial Virus Infection. *Front Immunol* (2019) **10**:452.  
743 doi:10.3389/fimmu.2019.00452

- 744 62. Dunning J, Blankley S, Hoang LT, Cox M, Graham CM, James PL, et al. Progression of  
745 whole-blood transcriptional signatures from interferon-induced to neutrophil-associated  
746 patterns in severe influenza. *Nat Immunol* (2018) **19**:625–35. doi:10.1038/s41590-018-  
747 0111-5
- 748 63. Itoh Y, Shinya K, Kiso M, Watanabe T, Sakoda Y, Hatta M, et al. In vitro and in vivo  
749 characterization of new swine-origin H1N1 influenza viruses. *Nature* (2009) **460**:1021–5.  
750 doi:10.1038/nature08260
- 751 64. To KK, Hung IF, Li IW, Lee K-L, Koo C-K, Yan W-W, et al. Delayed clearance of viral load  
752 and marked cytokine activation in severe cases of pandemic H1N1 2009 influenza virus  
753 infection. *Clin Infect Dis* (2010) **50**:850–9. doi:10.1086/650581
- 754 65. Iwasaki A, Pillai PS. Innate immunity to influenza virus infection. *Nat Rev Immunol* (2014)  
755 **14**:315–28. doi:10.1038/nri3665
- 756 66. Merad M, Martin JC. Pathological inflammation in patients with COVID-19: a key role for  
757 monocytes and macrophages. *Nat Rev Immunol* (2020) **20**:355–62. doi:10.1038/s41577-  
758 020-0331-4
- 759 67. O'Neill MB, Quach H, Pothlichet J, Aquino Y, Bisiaux A, Zidane N, et al. Single-Cell and  
760 Bulk RNA-Sequencing Reveal Differences in Monocyte Susceptibility to Influenza A Virus  
761 Infection Between Africans and Europeans. *Front Immunol* (2021) **12**:768189.  
762 doi:10.3389/fimmu.2021.768189
- 763 68. Reyman M, van Houten MA, van Baarle D, Bosch, Astrid A T M, Man WH, Chu, Mei Ling  
764 J N, et al. Impact of delivery mode-associated gut microbiota dynamics on health in the  
765 first year of life. *Nat Commun* (2019) **10**:4997. doi:10.1038/s41467-019-13014-7
- 766 69. Alba C, Aparicio M, González-Martínez F, González-Sánchez MI, Pérez-Moreno J, Del  
767 Toledo Castillo B, et al. Nasal and Fecal Microbiota and Immunoprofiling of Infants With  
768 and Without RSV Bronchiolitis. *Front Microbiol* (2021) **12**:667832.  
769 doi:10.3389/fmicb.2021.667832
- 770 70. Følsgaard NV, Schjørring S, Chawes BL, Rasmussen MA, Krogfelt KA, Brix S, et al.  
771 Pathogenic bacteria colonizing the airways in asymptomatic neonates stimulates topical

772 inflammatory mediator release. *Am J Respir Crit Care Med* (2013) **187**:589–95.

773 doi:10.1164/rccm.201207-1297OC

774

775 **Table 1 Baseline characteristics of the MIAI cohort**

Total number	171
Sex, female (%)	85 (49.7)
Gestational age [weeks] (SD)	39.8 ( $\pm$ 1.2)
Mode of delivery VD (%) CS total (%)	106 (62) 65 (38)
Multiples Singles (%) Multiples (%)	160 (96) 6 (4)
Antenatal corticosteroids	4 (2.4)
Mean umbilical cord arterial pH (SD)	7.2 ( $\pm$ 0.1)
APGAR score Mean APGAR at 1 min (SD) Mean APGAR at 5 min (SD) Mean APGAR at 10 min (SD)	8.9 ( $\pm$ 0.9) 9.7 ( $\pm$ 0.5) 9.9 ( $\pm$ 0.3)
Premature rupture of membranes (%)	47 (27)
Bonding in the delivery room (%)	163 (95)
Mean birth weight [g] (SD)	3429 ( $\pm$ 459)
Mean percentile birth weight [g] (SD)	54 (29)
Mean birth length [cm] (SD)	51 ( $\pm$ 2.0)
Mean head circumference at birth [cm] (SD)	34.9 ( $\pm$ 1.4)
SGA (%)	14 (9)
LGA (%)	24 (14)
Siblings None (%) One (%) Two or more (%)	85 (50) 67 (39) 19 (11)
Siblings in child care or school (%)	74 (43)
Mean number household members (SD)	3.6 ( $\pm$ 0.7)
Smoking in family (%)	37 (22)
Pets (%)	37 (22)



Environment	
Rural (%)	84 (49)
Urban (%)	87 (51)

776 SD, standard deviation; CS, cesarean section; VD, vaginal delivery; SGA, small for  
777 gestational age; LGA, large for gestational age

778

779 **Table 2 Baseline characteristics of pregnancy in the MIAI cohort**

	Mothers
Total number	166
Mean body weight before pregnancy [kg] (SD)	68.7 (± 15.2)
Mean BMI before pregnancy (SD)	24.6 (± 5.9)
Mean body weight at delivery [kg] (SD)	82.7 (± 16.4)
Mean BMI at delivery (SD)	29.4 (± 5.8)
Previous deliveries	
One (%)	67 (40)
Two or more (%)	20 (12)
Previous pregnancies	
One (%)	53 (32)
Two or more (%)	49 (30)
Blood type	
A (%)	68 (41)
B (%)	20 (12)
AB (%)	6 (3.6)
O (%)	72 (43)
Rhesus factor	
Positive (%)	142 (86)
Negative (%)	24 (14)
Diet	
Vegetarian (%)	13 (8)
Vegan (%)	0 (0.0)
Other (%)	4 (2.4)
Gestational diabetes mellitus	
Diet-controlled (%)	16 (10)
Insulin-treated (%)	4 (2.4)
Gestational hypertension (%)	3 (1.8)
Preeclampsia (%)	0 (0.0)
CMV status	
Negative (%)	68 (41)
Positive (%)	19 (11)
Unknown (%)	79 (48)
HBV status	
Negative (%)	84 (51)

Positive (%)	1 (0.6)
Unknown (%)	9 (5.4)
Vaccinated (%)	72 (43)
Influenza status	
Unknown (%)	87 (52)
Recovered (%)	2 (1.2)
Vaccinated (%)	74 (45)
Recovered and vaccinated	3 (1.8)
SARS-CoV-2 status	
Unknown (%)	5 (3.0)
Recovered (%)	5 (3.0)
Vaccinated (%)	42 (25)
Recovered and vaccinated (%)	114 (69)
Respiratory tract infections during pregnancy (%)	78 (47)
Antibiotic treatment during pregnancy (%)	38 (23)
Long-term medication during pregnancy (%)	37 (22)
Nicotine abuse	
Smoking (%)	3 (1.8)
No smoking (%)	163 (98)

780 BMI, Body mass index; CMV, Cytomegalovirus; HBV, Hepatitis B virus

781

782 **Table 3 Baseline characteristics of the parents in the MIAI cohort**

	Mothers	Fathers
Total number	166	164*
Mean age at delivery (SD)	32.8 (± 4.5)	35.3 (± 5.4)
Somatic disorders (%)	87 (52)	40 (24)
Mental disorders (%)	14 (8.4)	10 (6.0)
Smoker (%)	3 (1.8)	34 (21)
Origin		
Germany (%)	140 (84)	138 (84)
Asia (%)	7 (4.2)	5 (3.0)
Africa and Middle East (%)	6 (3.6)	8 (4.9)
Other (%)	13 (7.8)	13 (7.9)
Education		
Certificate <10 years school (%)	26 (16)	35 (21)
Certificate ≥10 years school (%)	131 (79)	116 (71)
No/other certificate (%)	9 (5.4)	13 (7.9)

783 \*In two cases, father unknown. SD, standard deviation

**Table 4 Overview of study appointments and clinical data collected in MIAI**

<b>Age of the child</b>	<b>Day 1 - 3</b>	<b>Day 30 (-40)</b>	<b>Month 6 (-7)</b>	<b>Month 12 (-14)</b>
<b>Screening for enrollment</b>	<b>○</b>			
<b>Pregnancy and perinatal history</b> History of diseases during pregnancy including gestational diabetes and hypertension, antenatal and perinatal antibiotics, mode of birth, multiplicity, sex, gestational age, umbilical artery pH and base excess, APGAR, body measurements, complications at delivery	<b>○</b>			
<b>Physical examination child</b> Total body physical examination, anthropometric measurements, blood pressure, respiratory rate, neurodevelopmental milestones	<b>○</b>	<b>○</b>	<b>○</b>	<b>○</b>
<b>CRF child</b> Body measurements and notes as documented in the child health record book by the attending pediatrician, history of vaccinations, infections, antibiotics including days of treatment, medication, inhalation, episodes of wheezing, skin rashes, allergies, hospital stays, and surgical procedures, diet (exclusive breastfeeding, mixed feeding with formula, age at introduction of solid food) and supplements, day care, lifestyle including further siblings, household members, pets, and residence (rural/urban), stays abroad, family history	<b>○</b>	<b>○</b>	<b>○</b>	<b>○</b>
<b>CRF mother</b> Age, somatic or psychiatric diseases, previous pregnancies, height, weight before and at end of pregnancy, BMI, CMV/HBV/HIV status, vaccination before and during pregnancy, blood type, infections, medication, diet, smoking, ethnicity, educational level, lifestyle, family history, subjective stress level	<b>○</b>	<b>○</b>	<b>○</b>	<b>○</b>
<b>CRF father</b> Age, somatic or psychiatric diseases, medication, smoking, ethnicity, educational level, lifestyle, family history	<b>○</b>			

Figure 1

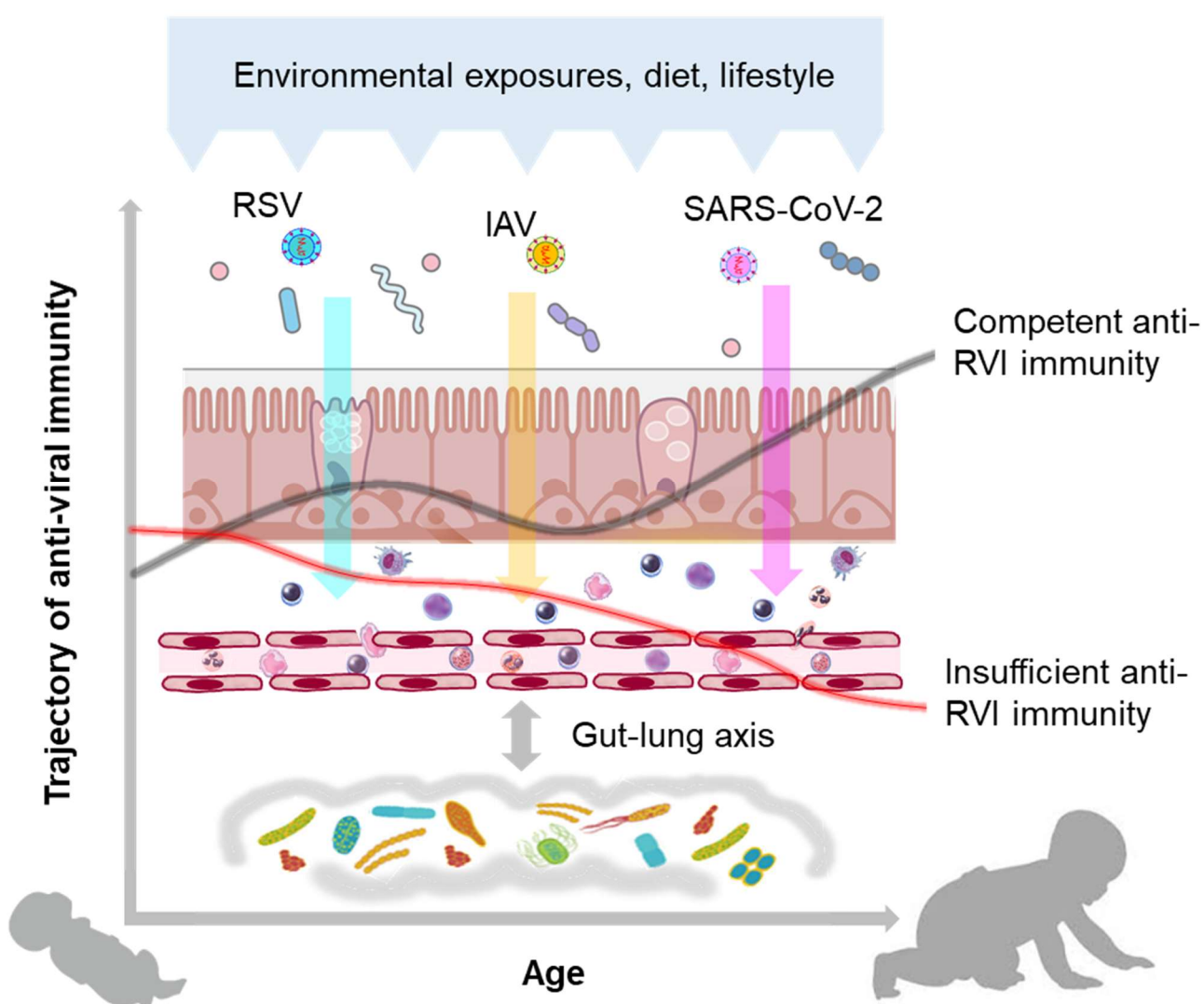


Figure 2

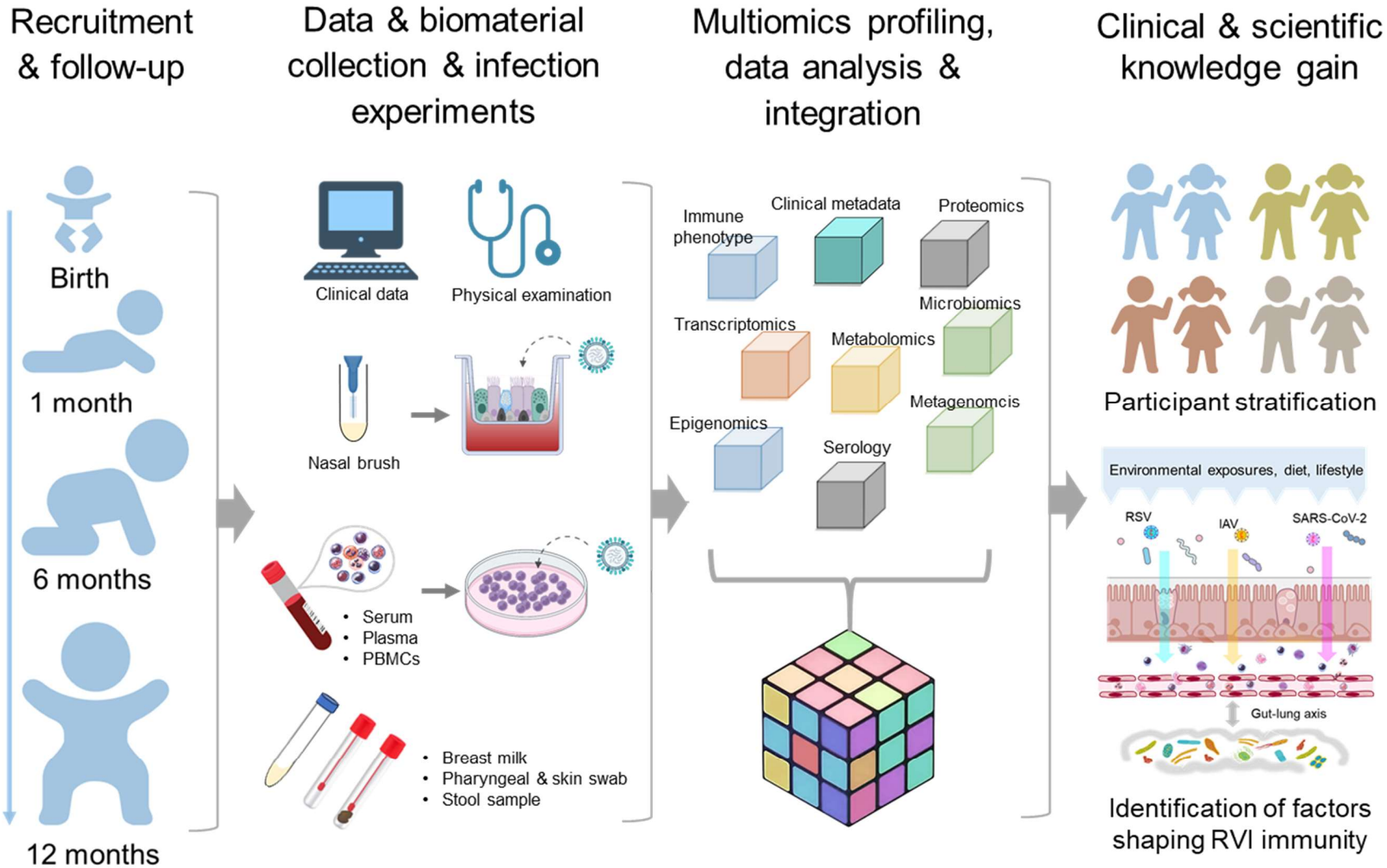


Figure 3

