

## **Disparities in access to Dolutegravir in West African children, adolescents and young adults aged 0-24 years living with HIV.**

### **A IeDEA Pediatric West African cohort analysis**

Sophie Desmonde<sup>1</sup> (0000-0001-9372-2819), Joycelyn Dame<sup>2</sup> (0000-0002-5197-023X), Karen Malateste<sup>3</sup>, Agatha David<sup>4</sup> (0000-0002-7773-6206), Madeleine Amorissani-Folquet<sup>5</sup> (0000-0001-6101-5810), Sylvie N'Gbeche<sup>6</sup>, Mariam Sylla<sup>7</sup> (0000-0002-8852-4132), Elom Takassi<sup>8</sup> (0000-0003-0726-5485), Kouadio Kouakou<sup>9</sup>, Lehila Bagnan Tossa<sup>10</sup>, Caroline Yonaba<sup>11</sup> (0000-0002-2924-3534) and Valériane Leroy<sup>1</sup> (0000-0003-3542-8616) for the IeDEA Pediatric West African cohort.

#### **Author affiliations and positions**

1. Centre d'Epidémiologie et de Recherche en santé des POPulations (CERPOP), French National Institute for Health and Medical Research (Inserm), University of Toulouse 3, UMR 1295, Toulouse, France  
Research Associate
2. University of Ghana Medical School, and Korle Bu Teaching Hospital, Accra, Ghana\*  
Senior lecturer
3. University of Bordeaux, National Institute for Health and Medical Research (INSERM) UMR 1219, Research Institute for Sustainable Development (IRD) EMR 271, Bordeaux Population Health Centre, Bordeaux, France
4. Nigerian Institute of Medical Research (NIMR), Abuja, Nigeria
5. Cocody University Hospital, Pediatric Department, Abidjan, Cote d'Ivoire
6. CEPREF Enfant, Abidjan, Côte d'Ivoire
7. Gabriel Toure Children's Hospital, Bamako, Mali
8. Tokoin University Hospital, Lomé, Togo
9. CIRBA, Abidjan, Côte d'Ivoire
10. Centre National Hospitalier Universitaire, Cotonou, Benin

11. CHU Yalgado Ouédraogo, Ouagadougou, Burkina Faso

### **Corresponding author**

#### **Sophie Desmonde**

Centre d'Epidémiologie et Recherche en Santé des POPulations (CERPOP)

Inserm UMR 1295, Université Paul Sabatier Toulouse 3

Equipe SPHERE : Study of Perinatal, pediatric and adolescent Health : Epidemiological Research and Evaluation

Axe : Santé Globale du Bébé à l'Adolescent en Afrique.

Faculté de Médecine, Bat F, 37 Allées Jules Guesde,

31073 Toulouse Cedex 7

France

**[sophie.desmonde-phillips@inserm.fr](mailto:sophie.desmonde-phillips@inserm.fr)**

"The corresponding author attests that all listed authors meet authorship criteria and that no others meeting the criteria have been omitted."

The Corresponding Author has the right to grant on behalf of all authors and does grant on behalf of all authors, a worldwide licence to the Publishers and its licensees in perpetuity, in all forms, formats and media (whether known now or created in the future), to i) publish, reproduce, distribute, display and store the Contribution, ii) translate the Contribution into other languages, create adaptations, reprints, include within collections and create summaries, extracts and/or, abstracts of the Contribution, iii) create any other derivative work(s) based on the Contribution, iv) to exploit all subsidiary rights in the Contribution, v) the inclusion of electronic links from the Contribution to third party material where-ever it may be located; and, vi) licence any third party to do any or all of the above.

### **Funding**

Research reported in this publication was supported by the National Institutes of Health (NIH) through the National Cancer Institute (NCI); Eunice Kennedy Shriver National Institute of Child Health & Human Development (NICHD); National Institute of Allergy and Infectious Diseases (NIAID); Grant

number: 5U01AI069919. Funders had no role in the design of the study and collection, analysis, or interpretation of the data, or the writing of the manuscript.

### **Abstract (299/300 words, structured)**

**Introduction:** We describe the 24-month incidence of Dolutegravir (DTG)-containing antiretroviral treatment (ART) initiation since its introduction in 2019 in the pediatric West African IeDEA cohorts.

**Methods:** We included all patients aged 0-24 years on ART, from nine clinics in Côte d'Ivoire (n=4), Ghana, Nigeria, Mali, Benin, and Burkina Faso. Baseline varied by clinic and was defined as date of first DTG prescription; patients were followed-up until database closure/death/loss to follow-up (LTFU, no visit  $\geq 7$  months), whichever came first. We computed the cumulative incidence function for DTG initiation; associated factors were explored in a shared frailty model, accounting for clinic heterogeneity. **Results:** Since 2019, 3,350 patients were included; 49% were female; 79% had been on ART  $\geq 12$  months. Median baseline age was 12.9 years (IQR: 9-17). Median follow-up was 14 months (IQR: 7-22). The overall cumulative incidence of DTG initiation reached 35.5% (95% CI: 33.7-37.2) and 56.4% (95% CI: 54.4-58.4) at 12 and 24 months, respectively. In univariate analyses, those aged  $<5$  years and females were overall less likely to switch. Adjusted on ART line and available viral load (VL) at baseline, females  $>10$  years were less likely to initiate DTG compared to males of the same age (aHR among 10-14 years: 0.62, 95% CI: 0.54-0.72; among  $\geq 15$  years: 0.43, 95% CI: 0.36-0.50), as were those with detectable VL ( $> 50$  copies/mL) compared to those in viral suppression (aHR: 0.86, 95% CI: 0.77-0.97) and those on PIs compared to those on NNRTIs (aHR after 12 months of roll-out: 0.75, 95% CI: 0.65-0.86). **Conclusion:** Access to paediatric DTG was incomplete and unequitable in West African settings: children  $<5$  years, females  $\geq 10$  years and those with detectable viral load were least likely to access DTG. Maintained monitoring and support of treatment practices is required to better ensure universal and equal access.

## **Key messages (3-5 sentences max)**

### **What is already known on this topic?**

- Dolutegravir (DTG)-based ART regimens are recommended as the preferred first-line ART regimens recommended by the World Health Organisation in all people living with HIV since 2018, with a note of caution for pregnant women, then confirmed in all children with approved DTG dosing and adolescents since 2019.
- Deployment of universal DTG access in adults in West Africa has faced challenges such as infrastructure challenges, and healthcare system disparities, and was hindered by initial perinatal safety concerns affecting greatly women of childbearing age.
- Specific data on access to DTG in children, adolescents and young adults in West Africa is limited.

### **What this study adds ?**

- This study describes the dynamic of the DTG roll-out over the first 24 months and its correlates since 2019 in a large West African multicentric cohort of children, adolescents and youth.
- We observed a rapid scale-up of DTG among children, adolescents and young adults living with HIV in West Africa, despite the COVID-19 pandemic.
- However, DTG access after 24 months was incomplete and unequitable, with adolescent girls and young women being less likely to initiate DTG compared to males, as were those with a detectable viral load (> 50 copies/mL) compared to those in success.
- Younger children < 5 years were also less likely to initiate DTG, explained by the later approval of paediatric formulations and their low availability.

### **How this study might affect research, practice or policy?**

- Maintained monitoring, training and updating guidance for healthcare workers is essential to ensure universal access to DTG, especially for females, for whom inequity begins age 10 years.
- Efforts to improve access to universal DTG in West Africa require multifaceted interventions including healthcare infrastructure improvement and facilitation of paediatric antiretroviral forecasting and planification.

**TEXT: 2954/5000 words**

## **INTRODUCTION**

Dolutegravir is an integrase strand transfer inhibitor that was first recommended by the World Health Organization (WHO) for antiretroviral therapy (ART) in adults in 2016 [1]. Indeed, DTG-based regimens are efficient alternatives, associated with higher viral suppression rates and higher genetic barrier, reducing potential drug resistance [2]. In 2018, the Tsepamo study in Botswana raised a signal about a potential association between neural tube defects in babies and mothers who were taking dolutegravir at the time of conception [3]. Subsequently, WHO revised recommendations, with a note of caution about using DTG among females of reproductive age [4]. Further data reported a weaker association between DTG and neural tube defects, and modelling studies supported the use of DTG in all people living with HIV because the benefits outweighed the risk [5–7].

In addition, DTG treatment was inaccessible for most children living with HIV, the only formulation available in Sub-Saharan Africa being the 50mg film-coated tablet registered for use in people weighing > 40kg. Data from the Odyssey trial showed that 50 mg DTG tablets given once daily in children provide appropriate pharmacokinetic profiles comparable to adults [8,9]. As a result, the WHO 2019 DTG paediatric dosing guidelines also led to the US FDA approval of 50mg dosing down to 20kg, widening the paediatric population eligible for DTG [4,10,11]. The Odyssey trial team also investigated the dosing of DTG among children receiving rifampicin-containing TB treatment and found twice-daily DTG was safe and sufficient, providing a practical ART option for children with HIV-associated TB [12]. Additional data from the trial, addressed the dosing of DTG in children weighing 3kg to <20kg and aged 4 weeks and above and formulations are now available for children as young as 4 weeks of age [13].

Thus, in 2019, the WHO strongly recommended DTG-containing ART regimens for all adults and adolescents living with HIV, including females of reproductive age regardless of contraception, and in infants and children with approved DTG dosing [14,15].

Since 2019, West African HIV treatment programs are transitioning to DTG giving priority to those who need it most (1/those not treated, 2/children receiving non- $\square$  nucleoside reverse transcriptase inhibitors (NNRTI)-based regimens, 3/children who need to start TB treatment and 4/children receiving LPV/r solid formulations with challenges in administration and achieving viral suppression). We sought to describe this early transition, since 2019, among children and adolescents aged 0-24 years in a large multicentric paediatric cohort in West Africa, the IeDEA paediatric West African Database to evaluate AIDS (pWADA).

## **METHODS**

### **Study design and inclusion criteria**

The IeDEA paediatric West African Database to evaluate AIDS (pWADA) is aimed to address evolving research questions in the field of HIV/AIDS care and treatment using routine data from multicentric HIV/AIDS children cohorts in West Africa [16,17]. This collaboration, initiated in July 2006, involves, in 2024, 10 paediatric referral HIV/AIDS clinics in seven countries: Benin (n=1), Burkina Faso (n=1), Côte d'Ivoire (n=4), Ghana (n=1), Mali (n=1), Nigeria (n=1) and Togo (n=1).

We included all children and adolescents aged 0 – 24 years enrolled in an IeDEA pWADA clinic, with at least one visit from January 2019, time of DTG introduction in West Africa. Those followed up in clinics where DTG was not yet rolled out at the time of the study were excluded from the analysis.

Each participating country formally agreed to contribute paediatric data, with local institutional review board and National Institute of Health approvals to contribute to the analyses.

### **Outcomes and key definitions**

Baseline was the date of visit from the first documented prescription of DTG in each clinic among patients aged 0-24 years, or date of enrolment, whichever was most recent. Our main outcome was dolutegravir initiation, which we defined as either transitioning to a DTG-containing regimen from another regimen, or newly initiating DTG-based ART. Start dates for DTG were based on clinician documentation of a new prescription. Competing events were death or loss-to-program. Loss-to-program included patients with a documented transfer to another clinic or those lost-to-follow-up (LTFU), defined as last clinical contact > 7 months at database closeout date. Database closeout dates varied by site, ranging from 2020-2022; site-specific study periods are available in Table 1.

### **Statistical analysis**

Patients were followed-up from baseline until DTG initiation, a competing event (death, transfer or LTFU), or database closeout date, when they were censored.



First, we calculated crude cumulative incidence proportions over the first 24 months after DTG introduction, along with 95% confidence intervals (CIs), for DTG initiation and competing events using the Aalen-Johansen estimator. Second, we used multilevel survival analysis to estimate hazard ratios for DTG initiation [18]. We computed a Cox regression model with mixed effects, incorporating a clinic-specific random effect to account for within-clinic homogeneity in outcomes, and the shared frailty followed a gamma distribution. Covariables included sex, stratified by age at baseline, duration on ART, baseline virological status (viral load [VL] unavailable, detectable  $VL \geq 50$  copies/mL or undetectable  $VL < 50$  copies/mL) and type of ART regimen immediately prior to DTG initiation according to time.

### **Patient and public involvement**

This study was conducted using programmatic data collected routinely. Patients were not involved in the analysis plan or result interpretation. Patients did not contribute to the writing or editing of this manuscript.

## RESULTS

Between January 2019 and July 2022, of the 10 paediatric clinical sites contributing to the pWADA cohort, all except the site in Togo had initiated DTG roll-out. Documentation of DTG prescription was first in Nigeria (February 2019) and then in Burkina Faso and the Cocody University Hospital in Cote d'Ivoire (March 2019). Other Ivorian sites accessed DTG between May-July 2019, and the clinical sites in Benin and Ghana began roll-out in September 2019. Lastly, the Gabriel Toure Hospital in Mali began prescribing DTG in May 2020.

Overall, 3,350 children and adolescents were included in this study, of whom 3,063 (91.4%) were on ART and in active follow-up at baseline, and 287 (8.6%) ART-naive were newly enrolled during the study period; 47% were female and median age at baseline was 12.5 years (interquartile range [IQR]: 8.4-15.8). Baseline characteristics are presented in table 1. Overall, 59% were of first-line ART, though this varied by clinic: in Benin, Burkina Faso and the CIRBA in Côte d'Ivoire, >50% were already on second-line regimens, while 80% of patients in Ghana were still on first-line. Overall, 79% had been on ART > 12 months, median time since ART initiation was 6.9 years (IQR: 3.7-9.9). VL measurement was available at baseline for 66% of children, of whom 59% were in viral suppression (VL < 50 copies/ml). Viral load measurement at baseline varied across clinics and countries, ranging from 33% in Burkina Faso (of whom 48% were in viral suppression) to 91% at the Yopougon University Hospital (of whom 55% were in viral suppression).

Overall, since 2019, 1496 (44.7%) patients initiated a DTG-containing regimen, 50 (1.5%) died and 213 (6.4%) were lost to the program. Median follow-up was 14.0 months [IQR: 7.5-21.9]. Cumulative incidence rates for DTG initiation are described in Figure 1. The 6-month cumulative incidence rate for DTG initiation since roll-out in the clinic was 12.7% (95% Confidence Interval [95%CI]: 11.5-13.9) and reached 56.4% (95%CI: 54.4-58.4) by 24 months. DTG incidence varied greatly according to country (Figure 2). The CIRBA clinic in Côte d'Ivoire was the single country to reach 55.7% within the first 12 months of DTG introduction, followed by Mali (36.5%, 95%CI:50.5-60.6) and the Nigerian Institute for Medical Research (24.1%, 95%CI:19.2-29.2) in Nigeria, while all other clinics were below 20%. After 24 months of roll-out, the CIRBA still had the highest DTG initiation rate

(71.4%, 95%CI:66.8-76.0), followed by the CEPREF clinic in Côte d'Ivoire (65.7%, 95%CI: 59.3-71.4) and the Yopougon University Hospital in Côte d'Ivoire (68.1%, 95%CI: 63.4-72.5) and the Yaldago Ouedraogo Hospital in Burkina Faso (58.8%, 95%CI: 51.8-65.1), while the other clinics remained below 50%. DTG initiation also varied by sex, with higher cumulative incidence among males compared to females at both 12 and 24 months (Figure 3a). However, we also note the gap closing towards the end of the follow-up period.

Factors associated with DTG initiation are presented in table 2 and Figure 3. In univariate analyses, we found that females, younger children (<5 years), those with detectable viral load and those on PI-based ART were least likely to access DTG. In multivariate analyses, adjusted for all other variable, these associations remained: females were less likely to initiate DTG than their male counterpart. This association strongly depended on age, while there was no difference between sex among those aged <10 years, the adjusted hazard ratio (aHR) ranged was 0.62 [95%CI: 0.54-0.72] among those 10-14 years and 0.43 [95%CI: 0.36-0.50] among those  $\geq 15$  years. We also found that DTG initiation was less likely among those with detectable viral load (aHR: 0.86, 95%CI: 0.77-0.97) compared to those with viral load < 50 copies/mL. In the first year of DTG roll-out, ART-naïve children were more likely to initiate DTG compared to those on an NNRTI-based ART regimen (aHR:2.00, 95%CI:1.52-2.65); after the first year, those on a PI-based ART regimen were less likely to initiate DTG compared to those on an NNRTI-based ART regimen (aHR: 0.75, 95%CI : 0.65-0.86).

## DISCUSSION

Universal DTG-containing ART regimens were recommended by WHO as preferred first-line ART since 2018 in adults and adolescents [4]. This study describes the dynamic of the DTG roll-out over 24 months and its correlates in a large West African cohort of children, adolescents and youth. DTG has been accessible since 2019 in nearly all clinical sites. Transition to DTG-containing ART regimens was less likely in children <10 years, in females  $\geq 10$  years and in those having a detectable viral load at baseline. Furthermore, we observed a role of the previous ART regimen at time of DTG roll-out, where those PI-based ART were less likely to access DTG in the first twelve months.

First, in our cohort, six out of the seven participating countries had begun prescribing DTG in 2019, among which all but one site (9/10) began in the first semester of 2019, underlying a rapid scale-up of DTG roll-out in West Africa, noticeable despite the COVID-19 pandemic in March 2020. Despite the remarkable progress in the roll-out of DTG since 2019, this was also heterogeneous between countries and still incomplete after 24 months after the WHO recommendations, as only four clinics reached >50% coverage. As detailed below, population characteristics could explain such differences in transitioning to DTG regimens, but also structural factors not captured in this analysis. We cannot exclude either, an effect of the COVID-19 pandemic that may also have jeopardized and slowed the DTG roll-out in the earlier years [19].

Second, we observed sex disparities among adolescents and young adults  $\geq 10$  years, where females were less likely than males of the same age to access DTG since start of the implementation in each clinical site. These disparities increased consistently with age. We assume that clinicians were reluctant in using DTG among female adolescents of childbearing potential because they were aware of the initial signal of neural tube defects reported from Botswana that led to a note of caution in the WHO recommendations in 2018 [3,4]. Since most sites had begun DTG roll-out before WHO recommended DTG to all, in July 2019, providing further reassurance on DTG due to the declining estimate of neural tube defect risk and observed efficacy, we hypothesise our observation is mostly related to the delay in disseminating such information at the field level [14]. Thus, the observed challenges in DTG access in adolescent and young females also reflects the fear of health care

providers to address this concern and their inability to offer contraceptive use in this population.

Indeed, contraceptive uptake among adolescent girls and young women in Sub-Saharan Africa is low [20,21] and healthcare providers lack education or face bias in addressing these questions [22,23]. The gap between males and females in terms of DTG initiation tended to close towards the end of the follow-up period. But, this inequity for young females should be addressed urgently and women should be provided with information about benefits and risks to make an informed choice regarding the use of DTG or other ART. Similar studies in the adult population have also reported this trend [24,25]. We advocate that if healthcare providers and stakeholders continue to be educated on the evidence of DTG safety among women of childbearing potential, access to DTG for adolescent girls and young women would increase and match that of their male counterparts.

Third, we report that children, adolescents and young adults with detectable viral load were less likely to initiate DTG compared to those in viral suppression in our cohort. This is not in line to the paediatric ARV guidelines recommending that DTG transition should occur irrespective of the availability of viral load test [15]. However, this result is likely driven by the adolescent and young adult population. This is most likely related to anticipated adherence challenges in children and adolescents and inadequate psychological support, which increases the risks of virological failure in this population [26]. Suboptimal adherence to ART has long been identified as a major contributor to the development of drug resistance among people living with HIV [27,28]. Despite the higher genetic barrier in DTG, several studies have reported on the emergence of integrase inhibitor drug resistance and reduced efficacy in patients on DTG receiving functional monotherapy [29,30]. Viral failure in children and adolescents living with perinatally acquired HIV can be either the result of poor adherence, frequent in this population, or also often the consequence of pre-treatment drug resistance caused by suboptimal maternal ART regimens [31]. In the absence of drug resistance testing, clinicians are inclined to prioritize therapeutical education to improve adherence first, despite persistent challenges in this domain, before transitioning to DTG-containing ART regimens. But this can end in a lack of chance too if not switching those who have unknow drug resistance mutations. Affordable technologies for detecting HIV drug resistance among those failing ART would be needed

to distinguish between children and adolescents living with HIV with HIV drug-resistance and those who have suboptimal adherence in low-income settings. This would also be important and useful when monitoring patients on DTG, as evidence of pre-treatment resistance to DTG in children and adolescents emerge [32].

Fourth, we report that ART-naive patients were most likely to initiate DTG. This was an expected result since WHO recommendations in the paediatric population prioritize those not treated [14]. We also found that those on PI-based ART regimens were less likely to initiate DTG compared to those on NNRTI-based ART. Several reasons can explain this expected observation. First, concerns on the development of resistance, as described above, may have led clinicians to favour PI-based regimens if there were anticipated adherence challenges. Indeed, observations from the DAWNING study suggest that failure on PIs is less likely to lead to resistance in adults [33]. Second, countries that had existing stocks of LPV/r pellets or granules were encouraged to consider utilising these stocks, in order to transition to DTG with minimal wastage [34].

Finally, we report in univariate analyses that children < 5 years were least likely to access DTG. This was an expected result in the early years of our study, since paediatric DTG (pDTG, 10mg) was not widely available then. Cote d'Ivoire, Benin and Nigeria were the first countries to roll-out paediatric formulations [35]. Furthermore, the TORPEDO study, carried out in Benin and Nigeria reported high acceptability and preference for pDTG [36]. However, our results report low transition in the population. While this is most probably explained by the fact that these younger children were on LPV/r, remaining in the system, it may also be a result of poor planification and stock-outs. This is of particular concern in terms of outcomes in these younger children living with HIV, who may remain at high risk of virological failure in the context of a slow transition to DTG-containing ART regimens [37]. As paediatric treatment optimization is focused on the continued scale-up of pDTG, irrespective of viral load, and more recently the introduction of paediatric fixed-dose combination of Abacavir-Lamivudine-Dolutegravir (pALD), it is essential for countries to ensure appropriate forecasting and supply, even for small quantities.

Our study presents several limitations. First, the referral clinics involved in these analyses are not representative of their country, leading to a probably over-estimation of DTG roll-out progress. We also reported no DTG roll-out in Togo, although previous literature has reported on the beginning of DTG roll-out since October 2019 [38]. Second, we report that DTG roll-out began in 2019, shortly before the COVID-19 pandemic, where healthcare provision may have been different from that of standard care, thus affecting structural factors associated with DTG initiation. Third, this study was carried in the early years of DTG roll-out, with varying database closeout dates ranging 2021-2022. This was also amidst perinatal safety concerns regarding the use of DTG among women of childbearing age and before pDTG was rolled out.

This study however provides useful real-world evidence on the scale-up of DTG in children, adolescents and young adults increasing rapidly since 2019 in West Africa, but still incomplete after 24 months. While we anticipate that sex disparities and the slow transition among the youngest children may fade in the coming years, access to DTG remains unequal. Lack of viral load and wastage concerns should not be a barrier to DTG initiation. Implementation of DTG regimens should be accompanied with an accelerated scaling up of access to viral load before, and after switch to DTG. Continued monitoring of DTG implementation, its outcomes and better planification of treatment option strategies are required to ensure universal access to all.

## **TABLES AND ILLUSTRATIONS**

Table 1 - Baseline characteristics of the 3,350 patients 0-24 years living with HIV and enrolled in the IeDEA pediatric West African sites rolling-out DTG, 2019-2022

Table 2 - Factors associated with transition to DTG-containing ART regimen among the 3,350 children, adolescents and young adults living with HIV and enrolled in the IeDEA pediatric West African sites rolling-out DTG, 2019-2022. Cox regression model with mixed effects, incorporating a clinic-specific random effect and the shared frailty followed a gamma distribution

Figure 1 – Overall cumulative incidence function of DTG initiation among the 3,350 children, adolescents and young adults living with HIV and enrolled in the IeDEA pediatric West African sites rolling-out DTG

Figure 2 – Cumulative incidence function of DTG initiation by clinic among the 3,350 children, adolescents and young adults living with HIV and enrolled in the IeDEA pediatric West African clinics rolling-out DTG

Figure 3 – Cumulative incidence function of DTG initiation among the 3,350 children, adolescents and young adults living with HIV and enrolled in the IeDEA pediatric West African clinics rolling-out DTG by sex (A), baseline age (B), baseline viral load (C) and baseline ART regimen (D).



Table 1 - Baseline characteristics of the 3,350 patients 0-24 years living with HIV and enrolled in the IeDEA pediatric West African sites rolling-out DTG, 2019-2022

Country/Clinics	Côte d'Ivoire CEPREF		Côte d'Ivoire CHU Cocody		Côte d'Ivoire CHUYopogon		Côte d'Ivoire CIRBA		Burkina Faso CHUYO		Benin CNHU		Mali GABRIEL		Ghana KBTH		Nigeria NIMR		Total	p-value	
<b>Total</b>	446		396		406		374		243		247		633		305		300		3350		
<b>Date of DTG introduction</b>	11th May 2019		27th March 2019		3rd July 2019		7th May 2019		7th March 2019		3rd September 2019		27th May 2020		25th September 2019		22nd February 2019				
<b>Date of database closure</b>	14th June 2021		15th October 2021		18th July 2022		29th March 2022		15th April 2022		8th August 2021		10th July 2021		13th July 2021		5th March 2022				
<b>Sex</b>																					0.05
Male	207	46.4%	209	52.8%	202	49.8%	199	53.2%	124	51.0%	141	57.1%	357	56.4%	170	55.7%	161	53.7%	1770	52.8%	
Female	239	53.6%	187	47.2%	204	50.2%	175	46.8%	119	49.0%	106	42.9%	276	43.6%	135	44.3%	139	46.3%	1580	47.2%	
<b>Age at baseline</b>																					<
Median, [IQR]	14.3	[9.8-17.3]	11.7	[7.3-15.2]	14.5	[10.1-17.7]	14.3	[11.2-17.6]	11.1	[8.1-13.9]	12	[7.3-15.2]	13.2	[9.1-16.5]	9.8	6.0-12.7]	10.7	[8.2-12.8]	12.5	[8.4-15.8]	
< 2 years	5	1.1%	24	6.1%	7	1.7%	2	0.5%	8	3.3%	12	4.9%	27	4.3%	16	5.2%	3	1.0%	104	3.1%	
2- 4 years	23	5.2%	33	8.3%	29	7.1%	20	5.3%	19	7.8%	23	9.3%	49	7.7%	34	11.1%	15	5.0%	245	7.3%	
5-9 years	88	19.7%	98	24.7%	63	15.5%	54	14.4%	75	30.9%	57	23.1%	114	18.0%	108	35.4%	111	37.0%	768	22.9%	
10-14 years	133	29.8%	138	34.8%	122	30.0%	135	36.1%	97	39.9%	91	36.8%	210	33.2%	134	43.9%	167	55.7%	1227	36.6%	
>15 years	197	44.2%	103	26.0%	185	45.6%	163	43.6%	44	18.1%	64	25.9%	233	36.8%	13	4.3%	4	1.3%	1006	30.0%	
<b>RT regimen at baseline</b>																					>
ART-naive	31	7.0%	76	19.2%	14	3.4%	1	0.3%	34	14.0%	29	11.7%	43	6.8%	48	15.7%	11	3.7%	287	8.6%	
NNRTI-based ART	293	65.7%	243	61.4%	266	65.5%	187	50.0%	113	46.5%	95	38.5%	366	57.8%	241	79.0%	233	77.7%	2037	60.8%	
PI-based ART	122	27.4%	77	19.4%	126	31.0%	159	42.5%	93	38.3%	89	36.0%	224	35.4%	16	5.2%	56	18.7%	962	28.7%	
Other ART regimens	0	0.0%	0	0.0%	0	0.0%	27	7.2%	3	1.2%	34	13.8%	0	0.0%	0	0.0%	0	0.0%	64	1.9%	
<b>RT line at baseline</b>																					>
ART naive	31	7.0%	76	19.2%	14	3.4%	1	0.3%	34	14.0%	29	11.7%	43	6.8%	48	15.7%	11	3.7%	287	8.6%	
1st line	301	67.5%	242	61.1%	259	63.8%	169	45.2%	109	44.9%	135	54.7%	291	46.0%	245	80.3%	229	76.3%	1980	59.1%	
≥ 2nd line	114	25.6%	78	19.7%	133	32.8%	204	54.5%	100	41.2%	83	33.6%	299	47.2%	12	3.9%	60	20.0%	1083	32.3%	
<b>Time on ART</b>																					<.0001
ART naive	31	7.0%	76	19.2%	14	3.4%	1	0.3%	34	14.0%	29	11.7%	43	6.8%	48	15.7%	11	3.7%	287	8.6%	
< 12 months	95	21.3%	21	5.3%	5	1.2%	89	23.8%	8	3.3%	28	11.3%	170	26.9%	7	2.3%	0	0.0%	423	12.6%	
≥ 12 months	320	71.7%	299	75.5%	387	95.3%	284	75.9%	201	82.7%	190	76.9%	420	66.4%	250	82.0%	289	96.3%	2640	78.8%	
<b>Virological status (success : viral load &lt; 50 copies).</b>																					<.0001
Viral load (VL) available	390	87.4%	300	75.8%	369	90.9%	317	84.8%	80	32.9%	92	37.2%	365	57.7%	120	39.3%	186	62.0%	2219	66.2%	
Access (% of available)	240	61.5%	173	57.7%	203	55.0%	208	65.6%	38	47.5%	46	50.0%	216	59.2%	55	45.8%	140	75.3%	1319	59.4%	
Failure (% of available)	150	38.5%	127	42.3%	166	45.0%	109	34.4%	42	52.5%	46	50.0%	149	40.8%	65	54.2%	46	24.7%	900	40.6%	

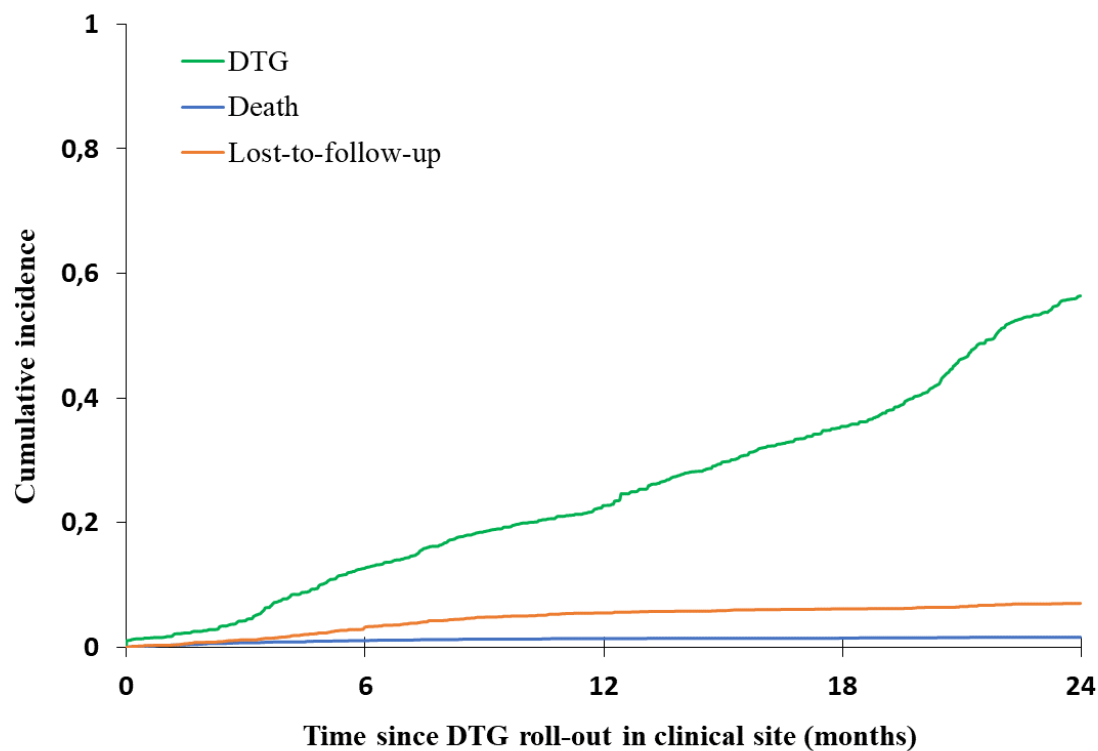
medRxiv preprint doi: <https://doi.org/10.1101/2024.05.24.24307900>; this version posted June 4, 2024. The copyright holder for this preprint (which was not certified by peer review) is the author/funder, who has granted medRxiv a license to display the preprint in perpetuity. It is made available under a CC-BY 4.0 International license.

Table 2 - Factors associated with transition to DTG-containing ART regimen among the 3,350 children, adolescents and young adults living with HIV and enrolled in the IeDEA pediatric West African sites rolling-out DTG, 2019-2022. Cox regression model with mixed effects, incorporating a clinic-specific random effect and the shared frailty followed a gamma distribution

	Univariate analysis		Multivariate analysis	
	Hazard ratio	95% Confidence Interval	Adjusted hazard ratio	95% Confidence Interval
<b>Age</b> (ref : < 5 years)				
5-9 years	2.32	[1.75-3.09]	-	-
10-14 years	5.55	[4.23-7.27]	-	-
≥ 15 years	6.10	[4.63-8.02]	-	-
<b>Sex</b> , female vs male	0.62	[0.57-0.69]		
<b>Sex, according to age</b>				
< 5 years, female vs male	-	-	1.09	[0.65-1.84]
5-9 years, female vs male	-	-	0.84	[0.67-1.06]
10-14 years, female vs male	-	-	0.62	[0.54-0.72]
≥ 15 years, female vs male	-	-	0.43	[0.36-0.50]
<b>On ART*</b> > 12 months vs ≤12 months	1.77	[1.53-2.04]	1.29	[1.11 - 1.51]
<b>Virological status at baseline</b> (ref: undetectable: viral load< 50 copies/mL)				
Detectable viral load	0.93	[0.83-1.04]	0.86	[0.77 – 0.97]
Viral load unavailable	1.04	[0.92-1.19]	0.98	[0.86 - 1.12]
<b>Baseline ART* regimen</b> (ref: NNRTI <sup>†</sup> -based ART)				
	<i>Within the first 12 months</i>		<i>Within the first 12 months</i>	
	<b>Hazard ratio</b>	<b>95% Confidence Interval</b>	<b>Adjusted hazard ratio</b>	<b>95% Confidence Interval</b>
	<i>&gt; 12 months of follow-up</i>		<i>&gt; 12 months of follow-up</i>	
	<b>Hazard ratio</b>	<b>95% Confidence Interval</b>	<b>Adjusted hazard ratio</b>	<b>95% Confidence Interval</b>
ART* naive	2.07	[1.54-2.77]	4.51	[3.31-6.16]
PI <sup>‡</sup> -based ART*	1.03	[0.87-1.21]	1.09	[0.93-1.29]
Other ART* regimens	1.38	[0.85-2.26]	1.03	[0.63-1.69]

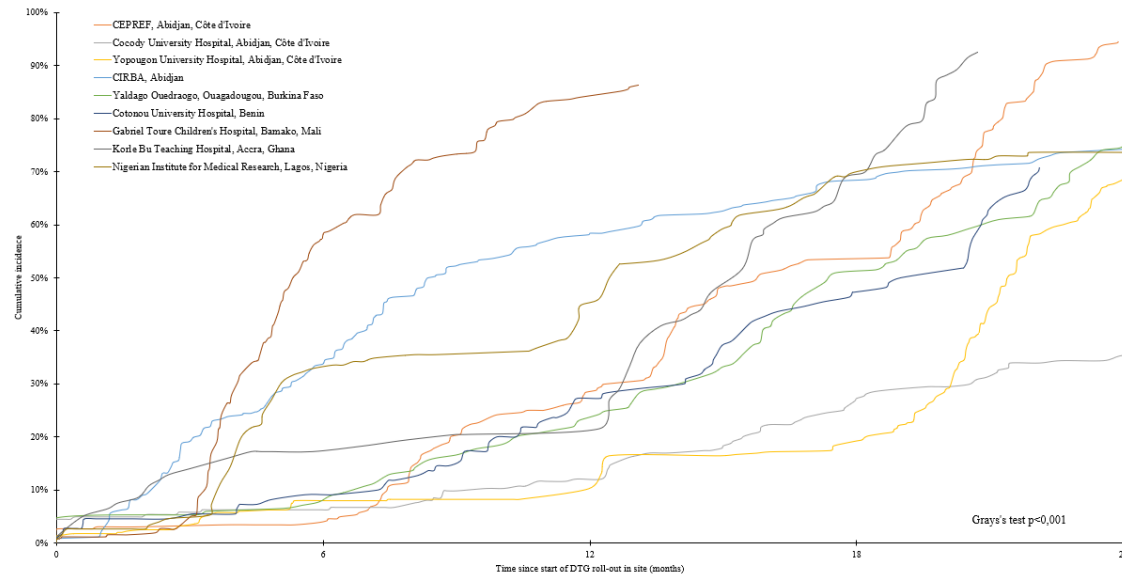
\*ART : antiretroviral therapy ; <sup>†</sup>Non-nucleoside reverse transcriptase inhibitor; <sup>‡</sup> Protease inhibitor

Figure 1 – Overall 24-month cumulative incidence function of DTG initiation among the 3,350 children, adolescents and young adults living with HIV and enrolled in the IeDEA pediatric West African sites rolling-out DTG



	<b>6 months</b> N= 2,681	<b>12 months</b> N=2,012	<b>18 months</b> N=1,361	<b>24 months</b> N=570
Cumulative incidence	12.7%	22.7%	35.5%	56.4%
95% Confidence Interval	[11.5-13.9]	[21.3-24.2]	[33.7-37.2]	[54.4-58.4]

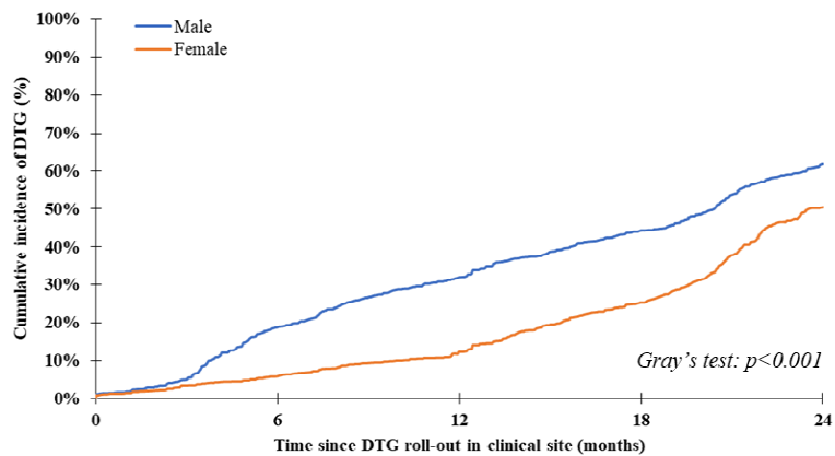
Figure 2 – 24-month cumulative incidence function of DTG initiation by clinic among the 3,350 children, adolescents and young adults living with HIV and enrolled in the IeDEA pediatric West African clinics rolling-out DTG



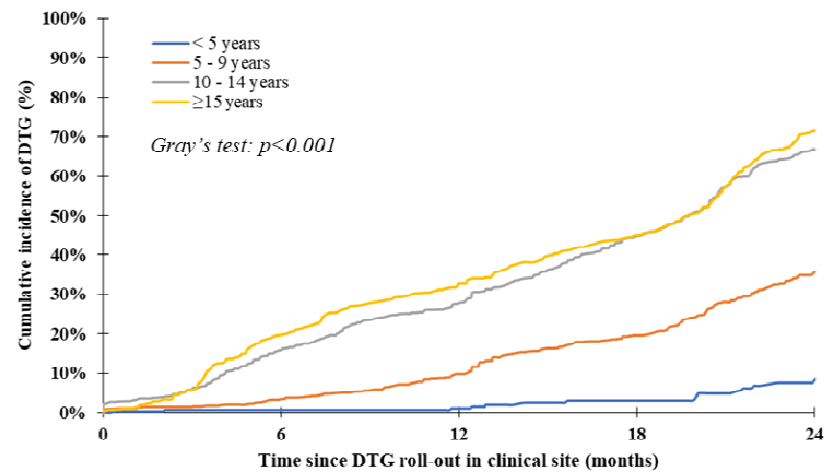
	6 months	12 months	18 months	24 months
<b>CEPREF, Abidjan, Côte d'Ivoire</b>				
Number at risk	417	335	260	20
Cumulative incidence	2.3%	17.4%	33.2%	65.7%
95% Confidence interval	[1.2-4.0]	[14.0-21.1]	[28.8-37.8]	[59.3-71.4]
<b>Cocody University Hospital, Abidjan, Côte d'Ivoire</b>				
Number at risk	333	282	237	207
Cumulative incidence	3.6%	7.0%	16.0%	20.7%
95% Confidence interval	[2.0-5.7]	[4.7-9.8]	[12.5-20.0]	[16.7-24.9]
<b>Yopougon University Hospital, Abidjan, Côte d'Ivoire</b>				
Number at risk	351	322	278	74
Cumulative incidence	7.4%	10.1%	19.0%	68.1%
95% Confidence interval	[5.1-10.2]	[7.4-13.3]	[15.3-23.0]	[63.4-72.5]
<b>CIRBA, Abidjan, Côte d'Ivoire</b>				
Number at risk	247	158	120	94
Cumulative incidence	32.3%	55.7%	65.5%	71.4%
95% Confidence interval	[27.6-37.0]	[50.5-60.6]	[60.4-70.1]	[66.8-76.0]
<b>Yaldago Ouedraogo, Ouagadougou, Burkina Faso</b>				
Number at risk	220	182	127	83
Cumulative incidence	5.4%	17.4%	39.2%	58.8%
95% Confidence interval	[3.0-8.8]	[12.8-22.6]	[32.7-45.7]	[51.8-65.1]
<b>Cotonou University Hospital, Benin</b>				
Number at risk	209	167	104	
Cumulative incidence	4.2%	13.0%	23.9%	
95% Confidence interval	[2.2-7.2]	[9.1-17.8]	[18.4-29.8]	
<b>Gabriel Toure Children's Hospital, Bamako, Mali</b>				
Number at risk	448	167		
Cumulative incidence	24.1%	36.5%		
95% Confidence interval	[20.1-27.6]	[32.6-40.4]		
<b>Korle Bu Teaching Hospital, Accra, Ghana</b>				
Number at risk	241	220	115	
Cumulative incidence	5.4%	6.6%	27.2%	
95% Confidence interval	[3.2-8.5]	[4.1-10.0]	[21.5-33.1]	
<b>Nigerian Institute for Medical Research, Lagos, Nigeria</b>				
Number at risk	227	185	139	120
Cumulative incidence	17.3%	24.1%	38.8%	41.3%
95% Confidence interval	[13.2-21.9]	[19.2-29.2]	[33.0-44.6]	[35.3-47.1]

Figure 3 – 24-month cumulative incidence function of DTG initiation among the 3,350 children, adolescents and young adults living with HIV and enrolled in the IeDEA pediatric West African clinics rolling-out DTG by sex (A), baseline age (B), baseline viral load (C) and baseline ART regimen (D).

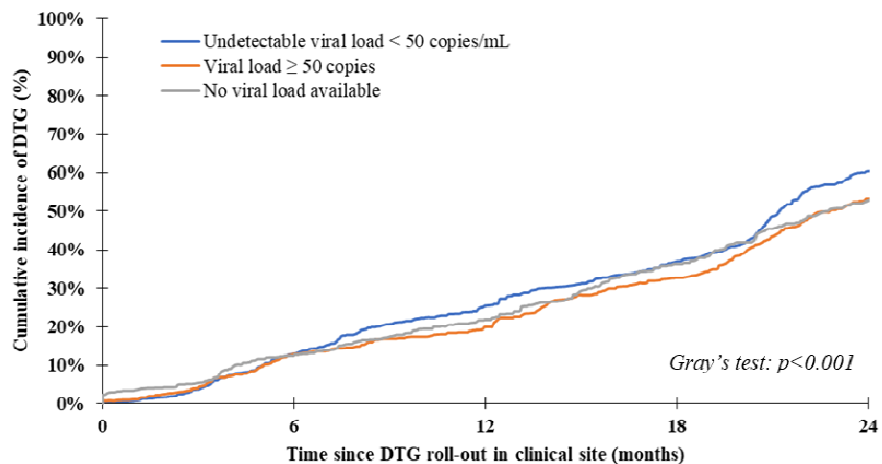
**Figure 3A**



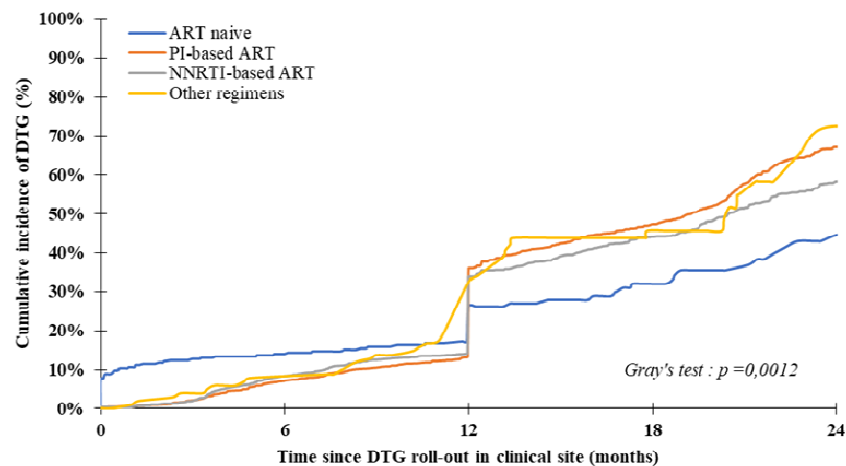
**Figure 3B**



**Figure 3C**



**Figure 3D**



## REFERENCES

- 1 Consolidated Guidelines on the Use of Antiretroviral Drugs for Treating and Preventing HIV Infection: Recommendations for a Public Health Approach. 2nd ed. Geneva: World Health Organization 2016. <http://www.ncbi.nlm.nih.gov/books/NBK374294/> (accessed 13 May 2024)
- 2 Phillips AN, Cambiano V, Nakagawa F, et al. Cost-effectiveness of public-health policy options in the presence of pretreatment NNRTI drug resistance in sub-Saharan Africa: a modelling study. *Lancet HIV*. 2018;5:e146–54.
- 3 Zash R, Makhema J, Shapiro RL. Neural-Tube Defects with Dolutegravir Treatment from the Time of Conception. *N Engl J Med*. 2018;379:979–81.
- 4 World Health Organisation. Updated recommendations on first-line and second-line antiretroviral regimens and post-exposure prophylaxis and recommendations on early infant diagnosis of HIV. Geneva, Switzerland 2018. <https://www.who.int/publications/i/item/WHO-CDS-HIV-18.51>
- 5 Zash R, Holmes L, Diseko M, et al. Neural-Tube Defects and Antiretroviral Treatment Regimens in Botswana. *N Engl J Med*. 2019;381:827–40.
- 6 Dugdale CM, Ciaranello AL, Bekker L-G, et al. Risks and Benefits of Dolutegravir- and Efavirenz-Based Strategies for South African Women With HIV of Child-Bearing Potential: A Modeling Study. *Ann Intern Med*. 2019;170:614–25.
- 7 Phillips AN, Venter F, Havlir D, et al. Risks and benefits of dolutegravir-based antiretroviral drug regimens in sub-Saharan Africa: a modelling study. *Lancet HIV*. 2019;6:e116–27.
- 8 Turkova A, White E, Mujuru HA, et al. Dolutegravir as First- or Second-Line Treatment for HIV-1 Infection in Children. *N Engl J Med*. 2021;385:2531–43.
- 9 Bollen PDJ, Moore CL, Mujuru HA, et al. Simplified dolutegravir dosing for children with HIV weighing 20 kg or more: pharmacokinetic and safety substudies of the multicentre, randomised ODYSSEY trial. *Lancet HIV*. 2020;7:e533–44.
- 10 Viani RM, Alvero C, Fenton T, et al. Safety, Pharmacokinetics and Efficacy of Dolutegravir in Treatment-experienced HIV-1 Infected Adolescents: Forty-eight-week Results from IMPAACT P1093. *Pediatr Infect Dis J*. 2015;34:1207–13.
- 11 Bruzzese E, Lo Vecchio A, Smarrazzo A, et al. Dolutegravir-based anti-retroviral therapy is effective and safe in HIV-infected paediatric patients. *Ital J Pediatr*. 2018;44:37.
- 12 Turkova A, Waalewijn H, Chan MK, et al. Dolutegravir twice-daily dosing in children with HIV-associated tuberculosis: a pharmacokinetic and safety study within the open-label, multicentre, randomised, non-inferiority ODYSSEY trial. *Lancet HIV*. 2022;9:e627–37.
- 13 Waalewijn H, Chan MK, Bollen PDJ, et al. Dolutegravir dosing for children with HIV weighing less than 20 kg: pharmacokinetic and safety substudies nested in the open-label, multicentre, randomised, non-inferiority ODYSSEY trial. *Lancet HIV*. 2022;9:e341–52.
- 14 World Health Organisation. Update of recommendations on first- and second-line antiretroviral regimens. Geneva, Switzerland 2019. <https://www.who.int/publications/i/item/WHO-CDS-HIV-19.15> (accessed 13 May 2024)
- 15 Consolidated Guidelines on HIV Prevention, Testing, Treatment, Service Delivery and Monitoring: Recommendations for a Public Health Approach. Geneva: World Health Organization 2021. <http://www.ncbi.nlm.nih.gov/books/NBK572729/> (accessed 13 May 2024)

- 16 Ekouevi DK, Azondekon A, Dicko F, et al. 12-month mortality and loss-to-program in antiretroviral-treated children: The IeDEA pediatric West African Database to evaluate AIDS (pWADA), 2000-2008. *BMC Public Health*. 2011;11:519.
- 17 Anaky M-F, Duvignac J, Wemin L, et al. Scaling up antiretroviral therapy for HIV-infected children in Côte d'Ivoire: determinants of survival and loss to programme. *Bull World Health Organ*. 2010;88:490–9.
- 18 Austin PC. A Tutorial on Multilevel Survival Analysis: Methods, Models and Applications. *Int Stat Rev*. 2017;85:185–203.
- 19 Ben Farhat J, Tiendrebeogo T, Malateste K, et al. Effects of the COVID-19 Pandemic on ART Initiation and Access to HIV Viral Load Monitoring in Adults Living With HIV in West Africa: A Regression Discontinuity Analysis. *J Acquir Immune Defic Syndr*. 2024;96:114–20.
- 20 Mohammed A, Donkoh IE, Aboagye RG, et al. Access to quality contraceptive counselling among adolescent girls and young women in sub-Saharan Africa. *Contracept Reprod Med*. 2024;9:16.
- 21 Radovich E, Dennis ML, Wong KLM, et al. Who Meets the Contraceptive Needs of Young Women in Sub-Saharan Africa? *J Adolesc Health*. 2018;62:273–80.
- 22 Wollum A, Moucheraud C, Gipson JD, et al. Characterizing provider bias in contraceptive care in Tanzania and Burkina Faso: A mixed-methods study. *Soc Sci Med*. 2024;348:116826.
- 23 Agu IC, Agu C, Mbachu C, et al. Impact of a capacity-building intervention on views and perceptions of healthcare providers towards the provision of adolescent sexual and reproductive health services in southeast Nigeria: a cross-sectional qualitative study. *BMJ Open*. 2023;13:e073586.
- 24 Tiendrebeogo T, Malateste K, Poda A, et al. Sex-Based Disparities in the Transition to Dolutegravir-Based Antiretroviral Therapy in West African HIV Cohorts. *Open Forum Infect Dis*. 2024;11:ofae139.
- 25 Romo ML, Patel RC, Edwards JK, et al. Disparities in Dolutegravir Uptake Affecting Females of Reproductive Age With HIV in Low- and Middle-Income Countries After Initial Concerns About Teratogenicity □: An Observational Study. *Ann Intern Med*. 2022;175:84–94.
- 26 Machila N, Libonda L, Habineza P, et al. Prevalence and predictors of virological failure in pediatric patients on HAART in sub-Saharan Africa: a systematic review and meta-analysis. *Pan Afr Med J*. 2023;45:98.
- 27 Redd AD, Mukonda E, Hu N-C, et al. ART Adherence, Resistance, and Long-term HIV Viral Suppression in Postpartum Women. *Open Forum Infect Dis*. 2020;7:ofaa346.
- 28 Malinga S, Khan A, Archary M. Breaking the unbreakable: A paediatric case of dolutegravir resistance from KwaZulu-Natal. *South Afr J HIV Med*. 2023;24:1458.
- 29 Rhee S-Y, Grant PM, Tzou PL, et al. A systematic review of the genetic mechanisms of dolutegravir resistance. *J Antimicrob Chemother*. 2019;74:3135–49.
- 30 Salou M, Butel C, Comlan AS, et al. Challenges of scale-up to dolutegravir-based regimens in sub-Saharan Africa. *AIDS*. 2020;34:783–7.
- 31 Siberry GK, Amzel A, Ramos A, et al. Impact of Human Immunodeficiency Virus Drug Resistance on Treatment of Human Immunodeficiency Virus Infection in Children in Low- and Middle-Income Countries. *J Infect Dis*. 2017;216:S838–42.



- 32 HIV drug resistance – brief report 2024. <https://www.who.int/publications-detail-redirect/9789240086319> (accessed 13 May 2024)
- 33 Aboud M, Kaplan R, Lombaard J, et al. Dolutegravir versus ritonavir-boosted lopinavir both with dual nucleoside reverse transcriptase inhibitor therapy in adults with HIV-1 infection in whom first-line therapy has failed (DAWNING): an open-label, non-inferiority, phase 3b trial. *Lancet Infect Dis.* 2019;19:253–64.
- 34 Clinton Health Access Initiative. Paediatric Dolutegravir 10 mg Dispersible, Scored Tablets Implementation Memo. 2021. <https://clintonhealth.app.box.com/s/65bbhtr8zsfsljorcfftodjh6bnpzwb> (accessed 13 May 2024)
- 35 Clinton Health Access Initiative, icap Globam Health. The Dolutegravir Transition in West Africa Best Practices, Lessons Learned, Next Steps (A CQUIN & CHAI Webinar). 2022. [https://cquin.icap.columbia.edu/wp-content/uploads/2022/02/DTG-Transition-Webinar\\_MASTER.pdf](https://cquin.icap.columbia.edu/wp-content/uploads/2022/02/DTG-Transition-Webinar_MASTER.pdf) (accessed 13 May 2024)
- 36 Campbell J, Rathakrishnan D, Ngwatu B, et al. Outcomes from the Transitioning children to Optimal Regimens of Paediatric Dolutegravir (TORPEDO) study at 6 months in Benin, Nigeria, and Uganda. Brisbane, Australia 2023. <https://programme.ias2023.org/Abstract/Abstract/?abstractid=4689>
- 37 Fokam J, Nka AD, Mamgue Dzukam FY, et al. Viral suppression in the era of transition to dolutegravir-based therapy in Cameroon: Children at high risk of virological failure due to the lowly transition in pediatrics. *Medicine (Baltimore).* 2023;102:e33737.
- 38 Casalini C, D’Almeida Y, Nassam MA, et al. Targeted solutions to increase dolutegravir coverage, viral load testing coverage, and viral suppression among children living with HIV in Togo: An analysis of routine facility data. *PLoS One.* 2023;18:e0296293.