

– SYSTEMATIC REVIEW AND META-ANALYSIS –

**# or Words: 3864**

**Mapping the Brain Network of Conduct Disorder:  
Heterogeneous fMRI findings converge on a Common Brain Circuit**

Jules R. Dugré, PhD<sup>1</sup>, & Stéphane Potvin, PhD<sup>2,3</sup>

<sup>1</sup> School of Psychology and Centre for Human Brain Health, University of Birmingham, Birmingham

<sup>2</sup> Research Center of the Institut Universitaire en Santé Mentale de Montréal, Montreal, Canada

<sup>3</sup> Department of Psychiatry and Addictology, Faculty of medicine, University of Montreal, Montreal, Canada

**Corresponding authors**

Jules Roger Dugré, PhD  
Centre for Human Brain Health, University of Birmingham, School of Psychology, Birmingham B15 2TT

Email: [j.dugre@bham.ac.uk](mailto:j.dugre@bham.ac.uk).

&

Stéphane Potvin, PhD;  
Centre de recherche de l'Institut Universitaire en Santé Mentale de Montréal; 7331 Hochelaga; Montreal, Canada; H1N 3V2;

Email: [stephane.potvin@umontreal.ca](mailto:stephane.potvin@umontreal.ca)

## ABSTRACT

Conduct disorder (CD) is among the most prevalent and burdensome disorders in early adolescence. Over the past decade, there has been growing interest in identifying reliable and localized neurobiological markers of conduct disorder (CD). However, recent meta-analyses have highlighted the weak reliability of these so-called markers, thereby limiting the ability to draw firm conclusions. Using normative network mapping (598 healthy subjects), we rather sought to investigate whether the heterogeneous findings across studies may map onto a common brain network. A meta-analysis of 38 fMRI studies involving adolescents with a CD (932 cases, 975 controls) was first conducted and showed only a very weak spatial convergence in brain activity alterations in the anterior temporal lobe (5 out of 38 studies). In turn, network mapping revealed that findings across studies show a consistent connectivity pattern across the whole brain, with regional overlap reaching up to 94.7% (36 out of 38 studies). This network was primarily driven by functional connectivity of brainstem nuclei, subcortical structures (i.e., thalamus, ventral striatum), cingulate cortex (i.e., anterior to posterior midcingulate), superior temporal sulcus, and visual cortices. We further describe the neurochemicals and genetic markers of this CD-Network with emphasis on midbrain serotonergic, dopaminergic and cholinergic projections. Our findings suggest that our understanding of the neurobiological markers of CD could be enhanced by viewing the brain as a complex interconnected system rather than reducing its complexity to a limited number of brain structures. More importantly, this CD-Network may serve as evidence that the various theories of CD can be reconciled rather than seen as conflicting.

**Keywords:** Conduct Disorder; Neuroimaging; Network; Resting-state; Meta-analysis

## Introduction

Conduct disorder (CD) is generally defined as persistent patterns of severe antisocial behaviors including various aggressive and rule-breaking behaviors <sup>1</sup>. Its global prevalence has been estimated to be around 5% <sup>2</sup> and is considered among the most burdensome psychiatric disorders in early adolescence <sup>3</sup>. While this disorder continues to be defined exclusively by behavioral criteria, early theories posited that youths with CD may exhibit potential deficits in neuropsychological processes (e.g., verbal and executive functions, <sup>4</sup>), attentional processes <sup>5</sup>, reward processing <sup>6</sup>, conditioning to distressing cues <sup>7, 8</sup>, and under-arousal, as a marker of fearlessness <sup>9</sup> and/or stimulation-seeking <sup>10, 11</sup>. Indeed, a bulk of psychological research now recognizes that youths with CD exhibit widespread impairments in interpersonal <sup>12-14</sup> and cognitive functioning <sup>15, 16</sup>. In addition, significant progress has been made to identify the potential neurobiological mechanisms underpinning CD. For example, a variety of physiological (i.e., reduced heart rate, low skin conductance), neuroendocrine (i.e., decreased function of the hypothalamic-pituitary-adrenal axis), and neurochemical (i.e., decreased serotonergic, noradrenergic, and dopaminergic systems) features have been associated to CD <sup>17-20</sup>. In neuroimaging literature, however, the search for neurobiological markers of CD remains one of the biggest challenges in the field, underscoring both the complexity of brain-behavior relationships and the necessity for further integrative research.

Literature reviews and meta-analyses of adolescents exhibiting severe conduct problems (including those diagnosed with a CD) highlighted aberrant brain activity during a wide range of neurocognitive domains including emotion processing, reinforcement learning, executive functions, and social cognition <sup>2, 21-24</sup>. Most notable evidence indicate that the amygdala, the orbitofrontal cortex/ventromedial prefrontal cortex (OFC/vmPFC), the anterior insula (aINS) and

the anterior cingulate cortex (ACC) may be key regions involved in the pathogenesis of CD <sup>2, 21</sup>. Indeed, lesion studies in humans also support the crucial role of specific brain regions in the emergence of conduct problems, and potentially CD. For example, Anderson and colleagues <sup>25</sup> reported a case in which a patient suffered a trauma to the PFC (frontopolar, vmPFC/mOFC) at an early age and subsequently developing signs of CD including lying, shoplifting, runaway, abusive behaviors and limited prosocial emotions. Others have documented cases involved severe damage to the OFC <sup>26</sup> and tumors to the mesial temporal lobe <sup>27</sup> which were *causally* linked to emergence of aggressive behaviors during adolescence. In light of these findings, it is unsurprising that these regions have garnered significant attention in neuroimaging research on CD and related disorders <sup>2, 21, 28-30</sup>. However, findings from fMRI studies reveal a more complex story than what was initially assumed.

Most meta-analyses of fMRI studies in CP/CD have revealed small effect sizes and relatively weak statistical significance across most brain regions <sup>22-24, 31, 32</sup>. While it is possible that robustness may be altered by the diverse sampling and methodological differences between studies (e.g., clinical heterogeneity, variability in fMRI tasks and statistical analyses, software used, statistical thresholding), it is noteworthy to mention that most regional effects are suspected to be driven primarily by a small subset of studies ( $\approx 25\%$ ) <sup>33</sup>. As the field of functional neuroimaging struggles with a replicability crisis <sup>34, 35</sup>, focusing solely on a limited number of brain regions to capture the mechanisms underpinning CD appears untenable. More importantly, this localizationist perspective is susceptible to biological reductionism <sup>36</sup> and does not align with current knowledge indicating that across time and conditions, the entire brain operates in *concerto*, through a modular organization of densely interconnected regions <sup>37, 38</sup>. Indeed, cerebral blood flow and variability of blood oxygen level-dependent (BOLD) signal in local areas are associated

with their level of functional connectivity (i.e., node strength/degree centrality)<sup>39-43</sup>, suggesting that local variability in BOLD signals may reflect information communication<sup>44</sup>. These findings are coherent with the fact that regions with high degree centrality, especially those involved in cognitively demanding task demands (e.g., reading, memory, inhibition), may demand more energy given their degree of signalling (e.g., supplies in oxygen, glucose)<sup>45,46</sup>. Averaging BOLD signal across task conditions and subjects (study-level) would thus reduce the importance of non-hubs regions (those with fewer connections), which are nevertheless essential for our understanding of psychopathologies. Recently, network mapping approaches have been carried out to address limitations generated by localizationist perspectives. For example, Darby and colleagues (2019) showed that heterogeneous locations of brain lesions temporally linked to antisocial behaviors may map onto a common functional connectivity network. These approaches were subsequently adopted in meta-analytic contexts, which were able to reveal, despite the use of heterogeneous peak coordinates, a specific whole-brain network for substance use disorder<sup>47</sup>, unipolar depression<sup>48</sup>, and emotion processing<sup>49</sup>. Adopting a more distributed perspective of brain functioning, as opposed to reducing complex phenotypes to a limited set of brain regions, may be better suited to enhance our understanding of the neurobiological markers for various disorders and psychopathologies<sup>50</sup>.

In the current study, we aimed to investigate whether using a distributed approach (i.e., network mapping) may outperform common regional approaches in terms of spatial convergence. More precisely, we conducted activation network mapping to examine whether the heterogeneous brain locations found across 38 fMRI studies of adolescents diagnosed with a CD may map onto a common brain network. We subsequently investigated whether the resulting CD-Network spatially corresponded to specific mental functions (e.g., executive functions, social cognition),

neurotransmission systems (e.g., serotonergic, noradrenergic and dopaminergic), and genetic markers (e.g., MAOA, COMT, SLC6A4) that were previously found to be associated with CD and related disorders <sup>2</sup>.

## Methods

### Meta-analytic Approaches

A subset of studies derived from the most recent meta-analyses of fMRI studies on youths exhibiting antisocial behaviors was included <sup>23, 24, 51</sup>. These studies were included if they: 1) included a sample with an average of less than 18 years old, 2) included a sample with at least 60% of the participants with a formal diagnosis of CD according to a clinical interview; 3) included a case-control analytic approach; 4) reported the peak coordinates of the significant group-difference across the whole-brain coordinates. To reduce the impact of multiple experiments per study, we concatenated them to form a study-level map <sup>52</sup>

First, we conducted a coordinate-based meta-analysis on the included fMRI studies across tasks, irrespectively of the directionality of the effect (increased vs. negative), using the activation likelihood estimation algorithm (see Supplementary Method). Spatial convergence was established by using a threshold of  $p < 0.001$  at voxel-level and FWE- $p < 0.05$  at a cluster-level with 5000 permutations, as recommended <sup>53, 54</sup>. This allowed us to establish how many studies contributed to findings at a regional level.

Second, we conducted an activation network mapping of peak coordinates of the included studies. This method involves normative resting-state data to explore to what extent heterogeneous findings may be linked to a common network <sup>47, 55</sup>. Briefly, a 4-mm sphere was created around each coordinate per each study to create a study-level mask. Then, we computed the normative

functional connectivity map of each study-level mask using resting-state data of 598 healthy children and adolescents (mean age=11.87, s.d.= 2.77, 71.6% boys) from the Autism Brain Imaging Data Exchange datasets, ABIDE-I <sup>56,57</sup> and ABIDE-II <sup>58</sup> (see supplementary material).

For each study, the group-level connectivity map was computed by averaging the time course of voxels in the study-level mask to the time course of every other voxel in the brain for each of the 598 healthy subjects. Subsequently, group-level connectivity map (across the 598 subjects) was computed using a voxel-wise one-sample *t*-test. To evaluate replicability across studies, we first conducted Spearman correlation between study-level connectivity maps across voxels. We also investigate the level of replicability between studies by thresholding each study-level connectivity map at  $t > 5$ , binarizing it, and combining them. Indeed, others previously found that in some regions, network approaches achieve replicability up to 100% <sup>47,55</sup>. Finally, we conducted a voxel-wise one-sample *t*-test using the unthresholded study-level maps to generate a CD-network map that was more consistent than expected by chance through permutation testing <sup>59</sup>. Main connectivity hubs of this network were identified using cluster-based Threshold-Free Cluster Enhancement (TFCE) and Family-Wise Error corrections (pFWE<0.05). For a more precise description of the top regions characterizing the CD-Network map, several atlases were used including the Yale Brain Atlas <sup>60</sup>, Automated anatomical labelling atlas (3<sup>rd</sup> version, <sup>61</sup>, Harvard Ascending Arousal Network Atlas <sup>62</sup> as well as amygdalar (provided by JuBrain Anatomy Toolbox, <sup>63</sup>), hypothalamic <sup>64</sup> and striatal atlases <sup>65</sup>. Subanalyses were conducted to explore the effect of resting-state fMRI studies, callous-unemotional traits (CU), comorbid attention-deficit/hyperactivity disorder (ADHD) and medication on our findings.

## **Functional Decoding: Mental Functions, Neurotransmission and Gene expression**

## Mental functions and Neurotransmission

We compared the spatial associations between the CD-network and 13 meta-analytic maps of mental functions and 20 whole-brain receptor/transporter density maps (see <sup>66</sup>) using JuSpace (version 1.4) <sup>67</sup>.

Whole-brain maps of mental functions were used from a data-driven summary of more than 1,347 neuroimaging meta-analyses aiming to derive an ontology of brain functions <sup>68</sup>. Functions included affective (i.e., motivation, value-based decision-making), cognitive (i.e., language, cognitive control, multiple demand), memory, attention, social cognition (i.e., face perception, social inference, social representation), somatomotor processes (i.e., auditory, interoception, action) <sup>68</sup>. Voxelwise spearman correlation was conducted between the input (CD-Network) and target images (Mental functions).

PET/SPECT density maps were distributed across 9 neurotransmitter systems including serotonin (i.e., 5-HT<sub>1A</sub>, 5-HT<sub>1B</sub>, 5-HT<sub>2A</sub>, 5-HT<sub>4</sub>, 5-HT<sub>6</sub>, 5-HTT), dopamine (i.e., D<sub>1</sub>, D<sub>2</sub>, DAT), norepinephrine (i.e., NET), Histamine (i.e., H<sub>3</sub>), acetylcholine (i.e.,  $\alpha$ 4 $\beta$ 2, M<sub>1</sub>, VACHT), cannabinoid (i.e., CB<sub>1</sub>), opioid (i.e., MOR, KOR), glutamate (i.e., NMDA, mGluR<sub>5</sub>) and GABA (i.e., GABA<sub>A/BZ</sub>). The mean values of 421 brain regions which included 400 parcels of the 7-Network Schaefer atlas <sup>69</sup> and additional 21 subcortical and cerebellar regions from the ASEG <sup>70</sup> and Buckner Atlas <sup>71</sup> were extracted for the two images (i.e., CD-Network and target maps [density]). Partial correlation (Spearman's rank correlation) adjusting for spatial autocorrelation (i.e., local grey matter probabilities) was then performed between the two sets of parcellated maps. Permutation-based p-values (with 5,000 permutations) were computed and corrected using false discovery rate (FDR).



### *1.1.1. Gene-Category Enrichment Analyses*

We investigated whether the CD-Network was significantly associated with gene expression patterns underlying psychiatric disorders (i.e., DisGeNET, <sup>72</sup>). This was done with the ABAnnotate toolbox (see <sup>73</sup>) which aims to perform gene-category enrichment analyses using volumetric maps. Brain-wide gene expression patterns were obtained via the Allen Human Brain Atlas <sup>74, 75</sup>. For these analyses, the CD-network map and the mRNA expression data for 15,633 genes were parcellated using the same parcellations as mentioned above (400 cortical and 21 subcortical and cerebellar regions). Null maps of the CD-Network (5,000) were generated while preserving spatial autocorrelation. Spearman correlations between the CD-network map, the null maps and all the mRNA expression maps were calculated. Positive-sided p-values were then calculated from the comparisons between the “true” category scores with null distribution and were FDR-corrected. To explore the potential role of specific genes, gene-wise spatial associations were then conducted using top genes that characterized disorders associated with the CD-Network.

- Insert Table 1 About Here -

**Table 1.** Summary of the Included fMRI Studies on Conduct Disorder (k=38)

Included Studies (First Author, Year)	Sample characteristics							Task
	Controls (N=)	% of Conduct Disorder	Diagnostic Assessment	Cases (N=)	Mean Age	Males (%)	MED (%)	
Aghajani, 2021 <sup>76</sup>	31	100.0%	K-SADS	19	16.4	100.0%	0.0%	Emotional Recognition & Resonance
Banich, 2007 <sup>77</sup>	12	75.0%	DISC-IV	12	16.7	100.0%	-	Stroop Task
Cao 2019 (A) <sup>78</sup>	30	100.0%	SCID-I/P	36	14.3	100.0%	-	Rest (ReHo)
Cao 2019 (B) <sup>78</sup>	30	100.0%	SCID-I/P	32	14.8	100.0%	-	Rest (ReHo)
Crowley, 2010 <sup>79</sup>	20	95.0%	DSM-IV CD	20	16.5	100.0%	30.0%	Colorado Balloon Game
Crowley et al., 2015 <sup>80</sup>	20	85.4%	DSM-IV	41	16.3	49.0%	34.1%	Decision-Making Behavioral Task
Decety 2009 <sup>81</sup>	8	100.0%	DSM-IV	8	16-18	NA	-	Empathy for Pain
Dong, 2016 <sup>82</sup>	36	100.0%	SCID-II	30	15.1	100.0%	-	Facial Expression (Pain)
Ewbank, 2018 <sup>83</sup>	25	100.0%	K-SADS-PL	24	18.1	100.0%	-	Facial Emotional Processing
Fairchild, 2014 <sup>84</sup>	20	100.0%	K-SADS	20	17.0	0.0%	-	Emotional Face Task
Fehlbaum, 2018 <sup>85</sup>	39	100.0%	K-SADS-PL	39	15.9	74.0%	89.7%	Affective Stroop Task
Finger, 2011 <sup>86</sup>	15	60.0%	K-SADS-PL	15	14.1	60.0%	46.7%	Probabilistic Reversal Task
Gatzke-Kopp, 2009 <sup>87</sup>	11	63.0%	DISC	19	13.6	100.0%	52.6%	Reward Processing
Herpertz, 2008 <sup>88</sup>	22	100.0%	K-SADS	22	14.7	100.0%	-	Passive-Viewing (Emotional)
Hwang, 2016 <sup>89</sup>	28	88.9%	K-SADS	18	14.6	56.0%	27.8%	Affective Stroop Task
Hwang 2018 <sup>90</sup>	29	73.7%	K-SADS	19	14.8	68.4%	15.8%	Social & Non-Social Rewards
Klapwijk, 2016a <sup>91</sup>	33	100.0%	K-SADS-PL	23	16.6	100.0%	0.0%	Empathic Emotional Face Task
Klapwijk, 2016b <sup>92</sup>	33	100.0%	K-SADS-PL	32	16.8	100.0%	0.0%	Dictator Game
Lu, 2017 <sup>93</sup>	18	100.0%	K-SADS-PL	18	16.1	NA	0.0%	Rest (Short/Long Range Density)
Lu, 2020 <sup>94</sup>	18	100.0%	K-SADS-PL	18	17.1	100%	0.0%	Rest (Static/Dynamic ALFF)
Lu, 2021 <sup>95</sup>	18	100.0%	K-SADS-PL	18	17.1	100.0%	-	Rest (dynamic ReHo)
Mathur 2023 <sup>96</sup>	41	63.4%	DSM	42	16.2	61.0%	26.2%	Retaliation Task
Menks et al., 2021 <sup>97</sup>	35	100.0%	K-SADS-PL	23	16.7	58.3%	-	Emotional Face Processing
Passamonti, 2010 <sup>98</sup>	40	100.0%	K-SADS	27	17.1	100.0%	-	Emotional Face Task
Rachle 2019 <sup>99</sup>	29	86.7%	K-SADS	30	16.3	0.0%	-	Effortful Emotion Regulation Task
Rubia, 2008 <sup>100</sup>	20	100.0%	Maudsley DI	13	13.0	100.0%	0.0%	Stop Task
Rubia, 2009a <sup>101</sup>	16	100.0%	Maudsley DI	14	12.9	100.0%	0.0%	Reward Continuous Performance
Rubia, 2009b <sup>102</sup>	20	100.0%	Maudsley DI	13	12.8	100.0%	0.0%	Simon Task
Rubia, 2010 <sup>103</sup>	20	100.0%	DSM-IV	14	12.6	100.0%	0.0%	Visual-Spatial Switch Task
White, 2012a <sup>104</sup>	19	94.1%	K-SADS	17	15.5	76.0%	11.8%	Eye Gaze Task
White, 2012b <sup>105</sup>	17	73.3%	K-SADS	15	15.7	80.0%	26.7%	Emotion-Attention Bars Task
White, 2013 <sup>106</sup>	18	85.0%	K-SADS	20	15.2	82.0%	10.0%	Passive Avoidance Task
White, 2014 <sup>107</sup>	15	73.3%	K-SADS	15	14.4	73.0%	20.0%	Doors Task
White 2016 <sup>108</sup>	26	73.3%	KSADS	30	15.0	63.3%	23.3%	Social Fairness Game
Wu 2017 <sup>109</sup>	28	100.0%	SCID-I/P	28	14.8	100.0%	0.0%	Rest (ReHo)
Zhou 2015 <sup>110</sup>	18	100.0%	K-SADS-PL	18	16.1	100.0%	0.0%	Rest (ALFF)
Zhang, 2015 <sup>111</sup>	40	100.0%	DSM-IV-TR	29	15.1	100.0%	-	Go/Stop Task
Zhang, 2023 <sup>112</sup>	77	100.0%	DSM	101	15.9	56.70%	45.5%	Passive Avoidance Task

Note. KSADS = Kiddie Schedule for Affective Disorders and Schizophrenia; DISC = Diagnostic Interview Schedule for Children; ReHo = Regional Homogeneity; ALFF = Amplitude of Low Frequency Fluctuations

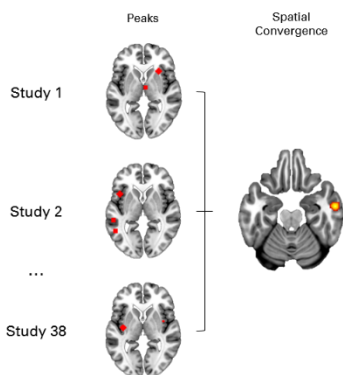
## Results

### Activation Likelihood Estimation Meta-analysis

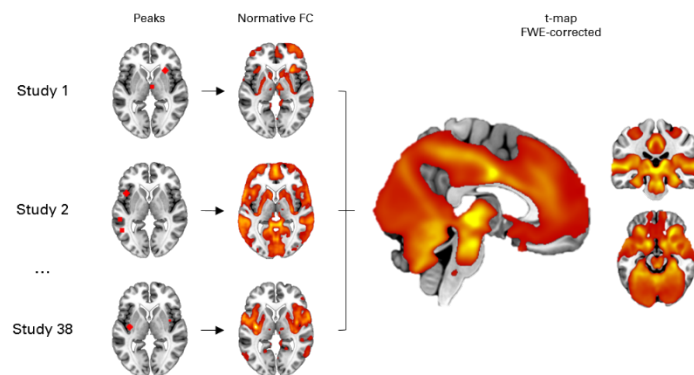
A total of 38 fMRI studies was included in the current meta-analysis which comprised 932 cases versus 975 controls (see Table 1). Mean age was 15.5 years old (SD=1.37) and mainly included males (average of 82.2% per sample). The average rates of CD per sample was 91.8% (SD=12.9). Of the 25 studies that reported prevalence of participants receiving medications (average 18.41% of samples), 11 samples comprised unmedicated participants. the Spatial convergence across these studies revealed a significant peak in the anterior inferior temporal gyrus ( $x=56, y=-10, z=-22, 728 \text{ mm}^3$ , see Figure 1) which was driven by only 5 studies out of 38 (13.15%).

- Insert Figure 1 About Here -

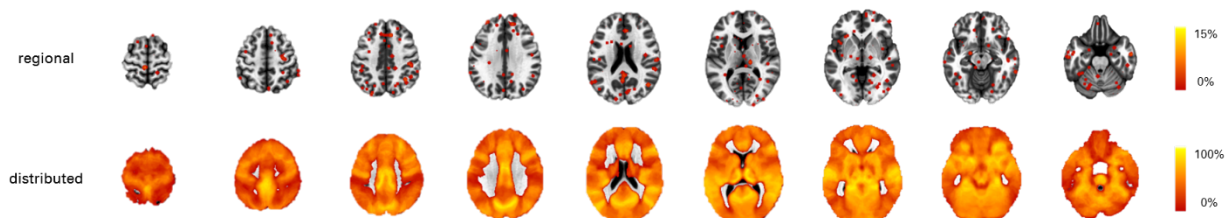
#### A. Meta-analysis of Conduct Disorder



#### B. Normative Network Mapping



#### C. Reliability across regional and distributed approaches



**Figure 1.** Spatial Convergence across neuroimaging studies on Conduct Disorder. **A.** Activation Likelihood Estimation meta-analysis was conducted on peak coordinates of 38 fMRI studies on Conduct Disorder which revealed a significant convergence anterior inferior temporal gyrus (5 studies out of 38). **B.** Normative Network mapping approach was conducted to identify whether heterogeneous brain locations (peak coordinates) between studies may map onto a common functional connectivity map. Network mapping revealed that study-level maps strongly correlated with each other (average  $r=.71$ ). **C.** Upper row displays of the overlap between peak coordinates across studies (4 mm sphere) showing low reliability (up to 13.15%). Lower row represents overlap between study-level maps that were binarized ( $T>|5|$ ) which showed high reliability (up to 97.4% of studies).

### Normative Network Mapping

Next, for each study, we computed the resting-state functional connectivity map using their reported coordinates peaks as seeds (Figure 1B). Using unthresholded study-level maps, a voxelwise one-sample t-test was then conducted to generate an unbiased t-map that is greater than expected by chance. Analyses revealed significant effects in many regions, especially the pons, midbrain, thalamus, ventral striatum, posterior hippocampus, orbitofrontal cortex, cingulate cortices (i.e., posterior midcingulate to perigenual anterior), visual (i.e., V3) and parietal cortices (i.e., anterior superior temporal gyrus to angular gyrus) (Figure 1B, Table 2). Thresholding each study-level t-map at  $T>|5|$ , binarizing and summing them revealed that study converge onto a common network with highest voxel replicability reaching up to 94.7% (36 out of 38 studies) in the posterior midcingulate gyrus, posterior hippocampus and thalamus (see Figure 1C and 3A, Table 2). More importantly, using more stringent thresholds than  $T>|5|$  (Stubbs et al., 2023) did not impact the findings:  $T>|6|$  (overlap<92.1%,  $r=.98$  with  $T>|5|$ ),  $T>|7|$  (overlap<89.5%,  $r=.96$ ),  $T>|8|$  (overlap<89.5%,  $r=.94$ ),  $T>|9|$  (overlap<86.8%,  $r=.91$ ), and  $T>|10|$  (overlap<81.5%,  $r=.88$ ). Next, we examined whether our findings might be driven by a particular functional network (Figure 2B). Compared to the rest of the brain, CD-Network was primarily characterized by

functional connectivity of the subcortex (Cohen's  $d=.84$ ), visual (Cohen's  $d=.80$ ), followed by the default mode network (DMN) (Cohen's  $d=.67$ ).

- Insert Table 2 About Here -

**Table 2.** Reliability of regional overlap between studies using Normative Network Approach

Regions	MNI Coordinates			Statistics	
	x	y	z	Peak Overlap (out of 38)	t-values
pHippocampus	30	-32	-10	36	10.72
pMCC	-4	-4	34	36	11.79
Thalamus	10	-22	12	36	10.43
Precuneus	-12	-42	44	35	9.53
Cuneus (V3)	8	-74	28	35	6.72
pHippocampus	-22	-36	-8	35	9.11
vPutamen	-16	8	-16	34	9.88
OFC (Fo3)	26	30	-14	34	10.32
ventral Putamen	28	8	-12	33	8.78
Superior Temporal Gyrus	60	-12	-2	33	9.74
Angular Gyrus	42	-60	18	33	8.62
IFG (BA 45)	56	32	14	33	9.63
Thalamus	14	-28	-2	33	9.86
Cerebellum (Dentate Nucleus)	16	-60	-36	32	10.49
Cerebellum (Dentate Nucleus)	-14	-60	-34	32	9.73
Pons	4	-22	-24	32	10.29
Amygdala	-30	4	-18	32	7.89
Superior Temporal Gyrus	-52	-10	-4	32	8.69
Angular Gyrus	-50	-72	16	32	9.19
posterior Insula	42	-24	10	31	7.30
Supramarginal Gyrus	56	-42	18	31	6.84
Middle Frontal Gyrus	26	34	38	30	7.06

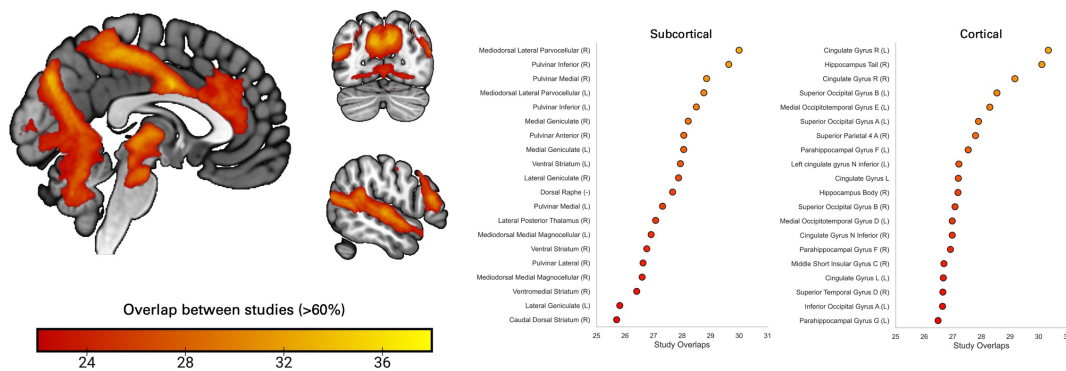
Note. pMCC = posterior Midcingulate Cortex; IFG = Inferior Frontal Gyrus;

Subanalyses were then conducted to investigate the effects of CU traits, comorbid ADHD, and medication on CD-Network ( $p<0.001$ , 10 voxels). First, no significant effect was found for the severity of CU traits (see Supplementary Results for median split). Comorbid ADHD revealed a significant effect in the lateral prefrontal cortex ( $x=-22, y=40, z=14, t=3.8$ , 125 voxels) and caudate nucleus ( $x=-16, y=12, z=14, t=3.54$ , 14 voxels). Medication level was associated with functional

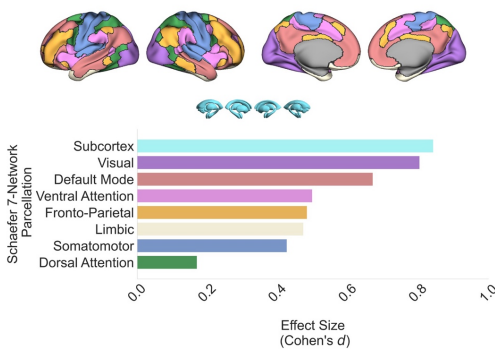
connectivity in the dorsolateral prefrontal cortex ( $x=-30, y=16, z=22, t=5.59, 64$  voxels), and supplementary motor area ( $x=-15, y=-16, z=62, t=3.98, 24$  voxels). However, none of these findings did not survive family-wise error correction ( $cFWE < 0.05$ ). Finally, removing resting-state studies ( $k=7$ ) did not impact our findings (voxelwise correlation  $r=.97$ ).

- Insert Figure 2 About Here -

### A. Conduct Disorder Network



### B. Importance of Intrinsic Connectivity Networks



### C.1. Effect of Callous-Unemotional Traits



### C.2. Effect of Comorbid ADHD



### C.3. Effect of Medication



**Figure 2.** Description of the Conduct Disorder Network (CD-Network). **A.** Figures show top brainstem, subcortical and cortical regions involved in the CD-Network. **B.** Barplot demonstrates the importance of subcortex and somatomotor networks (i.e., Schaefer-7 Networks) in characterizing the CD-Network, compared to the rest of the brain (Cohen's  $d$ ). **C.** Subanalyses were conducted to investigate the effect of CU traits, comorbid ADHD and medication. Comorbid ADHD revealed small significant effect in the lateral prefrontal cortex (IPFC) and caudate nucleus (CAUD). Medication level was associated with functional connectivity in the dorsolateral prefrontal cortex (dlPFC), and supplementary motor area (SMA). None of these findings did not

survive family-wise error correction (cFWE<0.05)

## **Functional Decoding: Mental Functions, Neurotransmission and Gene expression**

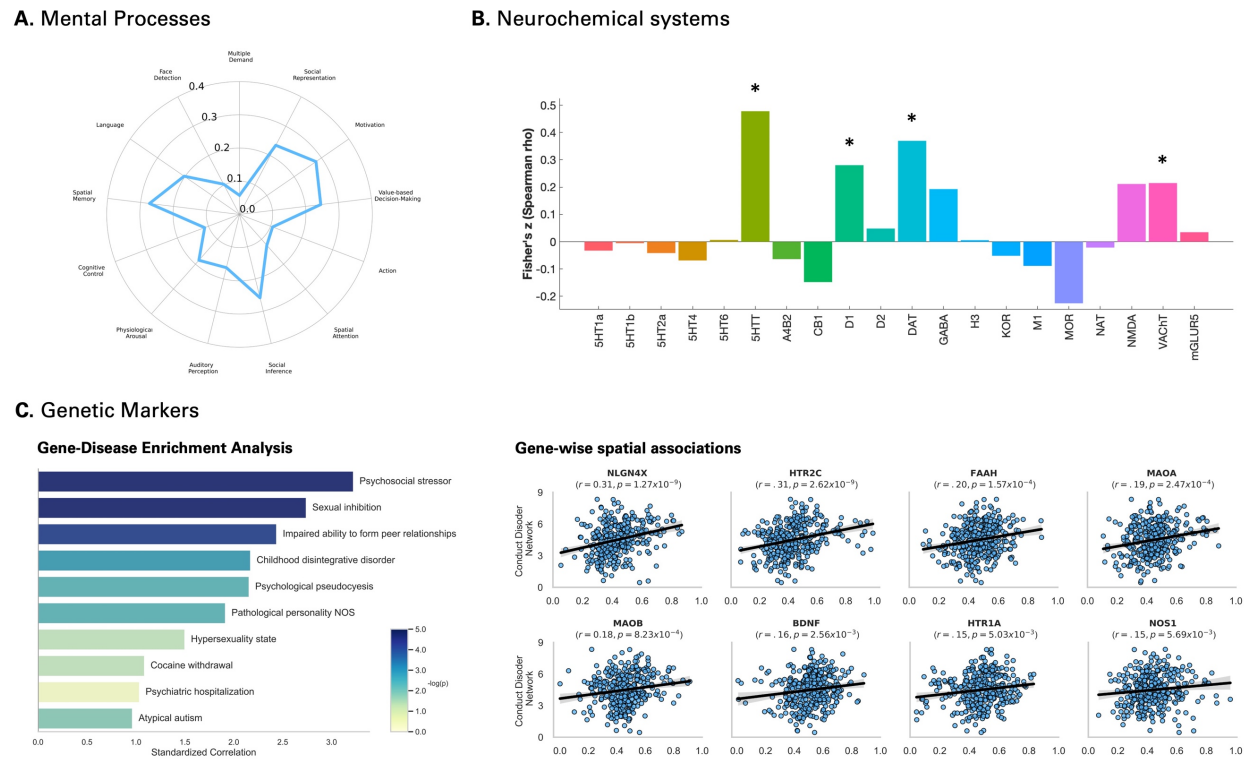
Given the distributed nature of the CD-Network, we sought to examine whether it spatially corresponded to specific mental functions, receptor density, and genetic markers.

Voxelwise spatial correlations with mental functions maps showed that the CD-Network showed was primarily associated with motivation ( $r=.28$ ), spatial memory ( $r=.27$ ), and social inference ( $r=.26$ ), value-based decision-making ( $r=.25$ ) and social representation ( $r=.24$ ). Using PET/SPECT density maps, CD-Network mainly correlated with Serotonin Transporter (5-HTT/SERT) ( $z'=.48$ ,  $pFDR<0.05$ ), dopaminergic transporter (DAT) ( $z'=.37$ ,  $pFDR<0.05$ ), dopamine receptor D<sub>1</sub> ( $z'=.28$ ,  $pFDR<0.05$ ), and Vesicular Acetylcholine Transporter (VACHT) ( $z'=.22$ ,  $pFDR<0.05$ ).

Gene-Category Enrichment Analyses were conducted using postmortem gene expression data to identify psychiatric disorders enriched with genes associated with the CD-Network (DisGenNet). We found that the CD-Network map significantly correlated with gene expression patterns of 71 disorders after correction with 5,000 permutations. Top disorders included Psychosocial stressor ( $Z=3.22$ ,  $p=1.3\times 10^{-7}$ ), sexual inhibition ( $Z=2.74$ ,  $p=1.1\times 10^{-7}$ ), Impaired ability to form peer relationships ( $Z=2.44$ ,  $p=3.2\times 10^{-7}$ ), Childhood disintegrative disorder ( $Z=2.17$ ,  $p=2.3\times 10^{-6}$ ), and Psychological pseudocyesis ( $Z=2.16$ ,  $p=3.07\times 10^{-6}$ ) (see Supplementary Table 1). More importantly, among these disorders, BDNF (39.4%), MAOA (28.2%), DRD2 (25.4%), COMT (19.7%), HTR1A (19.7%), HTR2A (18.3%), DRD4 (15.5%), and OXTR (15.5%) were the most frequently reported. From these, expression of NLGN4X ( $\rho=.31$ ,  $p=1.27\times 10^{-9}$ ), HTR2C ( $\rho=.31$ ,  $p=2.62\times 10^{-9}$ ), FAAH ( $\rho=.20$ ,  $p=1.57\times 10^{-4}$ ), and MAOA ( $\rho=.28$ ,  $p=2.47\times 10^{-4}$ )

showed strongest gene-wise spatial correlation with the CD-Network (Figure 3B, Supplementary Table 2).

- Insert Figure 3 About Here -



**Figure 3.** Functional Decoding of the Conduct Disorder Network. **A.** Voxelwise distribution of the CD-Network mainly correlated with motivation, spatial memory, social inference, and value-based decision-making, derived from the brain-behavior ontology of task-based fMRI studies (Dugré et Potvin, 2023). **B.** Top neurotransmission systems that spatially correlated with the CD-Network involved serotonergic, dopaminergic and cholinergic transporter, and dopamine receptor 1 (Dukart et al., 2020). Asterisks represent statistical significance after correcting for false discovery rate. **C.** Gene-Category Enrichment Analyses were conducted and identified 71 disorders associated with CD-Network. Left panel show the top 10 disorders the correlated the most with CD-Network. Correlations were weighted for the number of gene in categories (i.e.,  $\log(\text{number of genes}+1)$ , and standardized. Right panel represents gene-wise spatial correlation patterns of the most important genes across the identified disorders.

## Discussion



In the current meta-analysis, we sought to investigate the reliability of neuroimaging findings on CD using both local and diffused approaches. Of the 38 identified studies, spatial convergence in regional brain activity was observed in the inferior temporal gyrus. However, this finding was driven by only 5 studies (13%). In turn, network mapping yielded robust overlap between studies reaching up to 94.7% reliability, particularly in the posterior midcingulate cortex, posterior hippocampus and thalamus. We additionally observed prominent role of functional connectivity in the ascending arousal network (e.g., pontine reticular formation, dorsal raphe), midbrain, ventral striatum, parietal and occipital regions. Furthermore, the CD-Network showed main spatial correlations with socio-affective and reward-related processes, in addition to stronger concordance with density of serotonergic, dopaminergic, and cholinergic transporters. Finally, gene-category enrichment analyses revealed that the CD-Network was genetically close to psychosocial stress, sexual inhibition and impaired ability to form peer relationships, possibly due to alterations in NLGN4X, HTR2C, FAAH, and MAOA genes expression. Taken together, the CD-Network approach may facilitate the integration of existing theories by providing a robust framework of neural functioning in CD, where distinct mechanisms are functionally intertwined.

Over the past decades, several theorists attempted to describe pathogenesis of CD by proposing seemingly distinct mechanisms that could explain the emergence of antisocial behaviors. Among the most prominent theories, Integrated Emotion systems (IES) posits that the Violence Inhibition Mechanism (VIM) is usually activated by distressing cues, which results in autonomic activity and activation of the threat response system<sup>7</sup>. Reduced VIM would thus impair stimulus-reinforcement associations between actions that harm others and consequences of such actions (e.g., amygdala, orbito/ventrolateral cortices), and interfere with socialization<sup>113</sup>. Others rather suggested that CD symptoms may be better explained by alterations in executive functions

<sup>4</sup> and attentional processes <sup>5</sup>. For example, reduced affective response to threatening stimuli may be due to deficits in shifting the attention of CD individuals to cues that are secondary to their primary focus of attention (Newman, 1987) and/or to an exaggerated filtering out cues that are in periphery <sup>114</sup>. While both emotion-based and cognitive-based accounts mainly rely on distinct neural correlates, they are likely intertwined. For instance, we found a prominent role of brain regions underpinning both reinforcement learning (e.g., amygdala, ventral striatum, OFC/vlPFC) and attentional/control processes (e.g., dACC, pmCC, lateral PFC), offering partial support for both accounts. However, the emotion- and cognitive-based theories cannot fully account for the robust effects found in other brain regions including the brainstem/midbrain, posterior hippocampus, superior temporal sulcus and visual cortices.

One of the earliest psychobiological theory of criminal and antisocial behaviors postulated that low cortical arousal would result in impaired behavioral conditioning, therefore increasing the proneness to stimulation seeking behaviors <sup>10</sup>. Despite that it has long been proposed that low arousal would be associated with *fearlessness* in antisocial population <sup>9, 115, 116</sup>, initial theories of personality rather linked low arousal to a mode of functioning primarily found in extraverted individuals <sup>117</sup>, notably those with exaggerated reward seeking <sup>6</sup>. According to this model, these individuals with low arousal would exhibit antisocial behaviors to produce shifts in motivational states. Coherently with this model, low arousal has been robustly linked to antisocial population including adolescents with elevated CP (and CD) <sup>20, 118, 119</sup>, antisocial behaviors <sup>120</sup>, psychopathy <sup>18</sup> and criminal offending, especially violent behaviors <sup>121, 122</sup>. Not only this arousal theory can provide additional neurobiological insights to CD symptoms but may also link conceptually both emotion- and cognitive accounts. Indeed, autonomic arousal is fundamental for many cognitive processes including attention, memory, language, and executive functions <sup>123, 124</sup> as well as

incentive learning<sup>125</sup>. According to the Yerkes-Dobson Law, too much or too less arousal would alter cognitive performance. On a neurobiological level, Eysenck<sup>117</sup> already described the importance of the reticular formation<sup>126</sup>, now known as the Ascending Arousal System, which is characterized by multiple neurotransmitter-specific projections (cholinergic, noradrenergic, dopaminergic, serotonergic) from brainstem nuclei to the thalamus (dorsal pathway) and hypothalamus and basal forebrain (ventral pathway)<sup>62, 127</sup>. This ascending arousal system further contribute to the coordination of cortical activity in many brain regions overlapping with those found in the CD-Network including the ACC, MCC, and fronto-insular cortex<sup>128</sup>.

While the neurobiological correlates of arousal appears to overlap with those found in CD, it may not be sufficient to explain widespread deficits in emotion perception such as emotion recognition and emotional resonance. Indeed, findings also suggest that CD youths have particularly lower fixation to the eyes when processing negative facial expressions<sup>97, 129-131</sup> and deficits in emotional resonance<sup>91, 132</sup>. While many researchers adopt an amygdala-centric view of the neural dysfunctions in youths with CD, evidence indicates “*the amygdala is not essential for rapid, non-conscious detection of affective information.*” (p.6, <sup>133</sup>). For example, visual information about emotional stimuli appears to be processed by pulvinar/lateral geniculate, visual cortices (V1, V2) and inferotemporal cortex as fast as 60-85ms, followed by 100-200 ms for the amygdala<sup>133</sup>. This visual processing is often described via a two-pathway model<sup>134</sup>, including the dorsal (“Where”) and ventral (“What”) streams. However, Pitcher & Ungerleider<sup>135</sup> recently suggested the presence of a third visual pathway specific to social perception (e.g., calculating meanings and intentions of others), which relies on projections from early visual cortex to the anterior portion of the superior temporal sulcus via the posterior superior temporal sulcus<sup>135</sup>. These are largely overlapping with brain regions found in the CD-Network, spanning from the angular

gyrus to the anterior superior temporal sulcus. Of importance, our perceptions are known to be shaped by the contextual information we gather when encountering particular stimuli (e.g., seeing other's in distress). Evidence suggests that the retrieval of contextual representations is processed by the posterior hippocampus via the visual pathways and parahippocampal gyrus<sup>136, 137</sup>, which were among the brain regions found to be the mostly replicated using the CD-network approach. In sum, it is thus possible that the neurobiological deficits regarding the perception of social cues may appear earlier in the temporal sequence than was previously assumed, as they involve both the perception and retrieval of contextual representations. Indeed, using a large sample of adolescents (n=1,416), we previously showed that severity of CP was significantly associated with functional connectivity of many brain regions found in the current study, providing additional evidence for a role of visual cortex, posterior hippocampus, angular gyrus, posterior temporal gyrus in CD<sup>138</sup>. More research is needed to examine how the retrieval and integration of prior contextual knowledge may shape perception of social cues in youths with CD. Of importance, it is reported that only a limited number of youths with CD show poor emotion recognition skills (about 23%,<sup>139</sup>), disentangling the heterogeneity of youths with CD should be a central goal in future neuroimaging studies.

## **Limitations**

A few limitations need to be acknowledged. First, fMRI studies on CD differ on a wide range of methodological and clinical features. Despite our attempt to examine how these features may impact our results (e.g., resting-state, CU traits, ADHD comorbidity, medication), the relatively small sample size limits our ability to examine other features. Similarly, since CD is often described by Aggression and Rule-Breaking subdimensions, it remains unknown whether

some of our findings may be driven by one of these dimensions. Another limitation is the use of normative sample to characterize alterations in neural networks of CD. While normative approaches are powerful method to identify impairments, it is possible that youths with CD may show reorganization of the brain connectome<sup>140</sup> which may differ from normative expectations. Using mega-analytic approaches, such as in the ENIGMA-ASB Working Group, may help clarify to what extent CD youths show a brain reorganization compared to controls, respectively to our CD-Network.

## **Conclusion**

Researchers often describe the neural correlates of CD using a limited set of brain regions, noticeably the amygdala and prefrontal regions. However, neuroimaging literature reveal a more complex story than originally assumed by showing very weak spatial convergence across fMRI studies using a traditional meta-analytical approach. Here, we demonstrated that the heterogeneous peaks across these studies are connected to an overarching circuit. This distributed network, labelled as the CD-Network, mainly overlaps with neurobiological correlates of arousal-motivational and socio-affective processes which echo with prior work highlighting the importance of autonomic under-arousal and emotional perception in the emergence of antisocial behaviors. This CD-Network may serve as a template to study inter-individual differences in the neural processes that increase the risk for CD.

## **Acknowledgements**

SP is holder of the Eli Lilly Canada Chair on schizophrenia research. JRD is holder of a postdoctoral fellowship from the Canadian Institutes of Health Research (MFE-181885).

## Conflict of Interest

The authors declare no potential conflict of interests.

## Authorship

Both authors have made substantial contributions to this work. JRD & SP conceptualized the study and interpreted the results. JRD did the statistical analyses and wrote the first draft of the manuscript. SP provided significant revision, and both authors approved the final version of this manuscript.

## REFERENCES

1. American Psychiatric Association. *Diagnostic and Statistical Manual of Mental Disorders (5th ed.)*. American Psychiatric Publishing: Arlington, VA, 2013.
2. Fairchild G, Hawes DJ, Frick PJ, Copeland WE, Odgers CL, Franke B *et al*. Conduct disorder. 2019; **5**(1): 1-25.
3. Kieling C, Buchweitz C, Caye A, Silvani J, Ameis SH, Brunoni AR *et al*. Worldwide Prevalence and Disability From Mental Disorders Across Childhood and Adolescence: Evidence From the Global Burden of Disease Study. *JAMA Psychiatry* 2024; **81**(4): 347-356.
4. Moffitt TE. The neuropsychology of conduct disorder. *Development and Psychopathology* 1993; **5**(1-2): 135-151.
5. Patterson CM, Newman JP. Reflectivity and learning from aversive events: toward a psychological mechanism for the syndromes of disinhibition. *Psychol Rev* 1993; **100**(4): 716-736.
6. Quay HC. The psychobiology of undersocialized aggressive conduct disorder: A theoretical perspective. *Development and Psychopathology* 1993; **5**(1-2): 165-180.

7. Blair RJR. A cognitive developmental approach to morality: investigating the psychopath. *Cognition* 1995; **57**(1): 1-29.
8. BLAIR T, FRITH U. Neurocognitive explanations of the antisocial personality disorders. *Criminal Behaviour and Mental Health* 2000; **10**(S1): S66-S81.
9. Lykken DT. A study of anxiety in the sociopathic personality. *The Journal of Abnormal and Social Psychology* 1957; **55**(1): 6-10.
10. Eysenck HJ. *Crime and personality*. Houghton Mifflin Co.: Oxford, England, 1964, xv, 204-xv, 204pp.
11. Quay HC. Psychopathic personality as pathological stimulation-seeking. *The American Journal of Psychiatry* 1965; **122**(2): 180-183.
12. Frick PJ, Kemp EC. Conduct Disorders and Empathy Development. *Annu Rev Clin Psychol* 2021; **17**: 391-416.
13. Longman T, Hawes DJ, Kohlhoff J. Callous-Unemotional Traits as Markers for Conduct Problem Severity in Early Childhood: A Meta-analysis. *Child Psychiatry Hum Dev* 2016; **47**(2): 326-334.
14. Colins OF, Fanti KA, Andershed H. The DSM-5 Limited Prosocial Emotions Specifier for Conduct Disorder: Comorbid Problems, Prognosis, and Antecedents. *J Am Acad Child Adolesc Psychiatry* 2021; **60**(8): 1020-1029.
15. Morgan AB, Lilienfeld SO. A meta-analytic review of the relation between antisocial behavior and neuropsychological measures of executive function. *Clin Psychol Rev* 2000; **20**(1): 113-136.
16. Ogilvie JM, Stewart AL, Chan RCK, Shum DHK. Neuropsychological measures of executive function and antisocial behavior: A meta-analysis. *Criminology: An Interdisciplinary Journal* 2011; **49**(4): 1063-1107.
17. Matthys W, Vanderschuren LJ, Schutter DJ. The neurobiology of oppositional defiant disorder and conduct disorder: altered functioning in three mental domains. *Dev Psychopathol* 2013; **25**(1): 193-207.
18. de Loeff PC, Cornet LJM, de Kogel CH, Fernández-Castilla B, Embregts P, Didden R *et al*. Heart rate and skin conductance associations with physical aggression, psychopathy, antisocial personality disorder and conduct disorder: An updated meta-analysis. *Neurosci Biobehav Rev* 2022; **132**: 553-582.
19. Cappadocia MC, Desrocher M, Pepler D, Schroeder JH. Contextualizing the neurobiology of conduct disorder in an emotion dysregulation framework. *Clin Psychol Rev* 2009; **29**(6): 506-518.

20. Fanti KA, Eisenbarth H, Goble P, Demetriou C, Kyranides MN, Goodwin D *et al*. Psychophysiological activity and reactivity in children and adolescents with conduct problems: A systematic review and meta-analysis. *Neurosci Biobehav Rev* 2019; **100**: 98-107.
21. Blair RJ, Leibenluft E, Pine DS. Conduct disorder and callous-unemotional traits in youth. *N Engl J Med* 2014; **371**(23): 2207-2216.
22. Alegria AA, Radua J, Rubia K. Meta-Analysis of fMRI Studies of Disruptive Behavior Disorders. *Am J Psychiatry* 2016; **173**(11): 1119-1130.
23. Berluti K, Ploe ML, Marsh AA. Emotion processing in youths with conduct problems: an fMRI meta-analysis. *Transl Psychiatry* 2023; **13**(1): 105.
24. Dugré JR, Radua J, Carignan-Allard M, Dumais A, Rubia K, Potvin S. Neurofunctional abnormalities in antisocial spectrum: A meta-analysis of fMRI studies on Five distinct neurocognitive research domains. *Neurosci Biobehav Rev* 2020; **119**: 168-183.
25. Anderson SW, Bechara A, Damasio H, Tranel D, Damasio AR. Impairment of social and moral behavior related to early damage in human prefrontal cortex. *Nat Neurosci* 1999; **2**(11): 1032-1037.
26. Mitchell DGV, Fine C, Richell RA, Newman C, Lumsden J, Blair KS *et al*. Instrumental learning and relearning in individuals with psychopathy and in patients with lesions involving the amygdala or orbitofrontal cortex. *Neuropsychology* 2006; **20**(3): 280-289.
27. Nakaji P, Meltzer HS, Singel SA, Alksne JF. Improvement of aggressive and antisocial behavior after resection of temporal lobe tumors. *Pediatrics* 2003; **112**(5): e430.
28. Blair RJ. The amygdala and ventromedial prefrontal cortex: functional contributions and dysfunction in psychopathy. *Philos Trans R Soc Lond B Biol Sci* 2008; **363**(1503): 2557-2565.
29. Blair RJ. The amygdala and ventromedial prefrontal cortex in morality and psychopathy. *Trends Cogn Sci* 2007; **11**(9): 387-392.
30. Koenigs M. The role of prefrontal cortex in psychopathy. *Rev Neurosci* 2012; **23**(3): 253-262.
31. Raschle NM, Menks WM, Fehlbauer LV, Tshomba E, Stadler C. Structural and Functional Alterations in Right Dorsomedial Prefrontal and Left Insular Cortex Co-Localize in Adolescents with Aggressive Behaviour: An ALE Meta-Analysis. *PLoS One* 2015; **10**(9): e0136553.



32. Noordermeer SD, Luman M, Oosterlaan J. A Systematic Review and Meta-analysis of Neuroimaging in Oppositional Defiant Disorder (ODD) and Conduct Disorder (CD) Taking Attention-Deficit Hyperactivity Disorder (ADHD) Into Account. *Neuropsychol Rev* 2016; **26**(1): 44-72.
33. Eickhoff SB, Nichols TE, Laird AR, Hoffstaedter F, Amunts K, Fox PT *et al.* Behavior, sensitivity, and power of activation likelihood estimation characterized by massive empirical simulation. *Neuroimage* 2016; **137**: 70-85.
34. Noble S, Scheinost D, Constable RT. A decade of test-retest reliability of functional connectivity: A systematic review and meta-analysis. *Neuroimage* 2019; **203**: 116157.
35. Elliott ML, Knodt AR, Ireland D, Morris ML, Poulton R, Ramrakha S *et al.* What Is the Test-Retest Reliability of Common Task-Functional MRI Measures? New Empirical Evidence and a Meta-Analysis. *Psychol Sci* 2020; **31**(7): 792-806.
36. Noble S, Curtiss J, Pessoa L, Scheinost D. The tip of the iceberg: A call to embrace anti-localizationism in human neuroscience research. *Imaging Neuroscience* 2024; **2**: 1-10.
37. Sporns O, Betzel RF. Modular Brain Networks. *Annu Rev Psychol* 2016; **67**: 613-640.
38. Meunier D, Lambiotte R, Bullmore ET. Modular and hierarchically modular organization of brain networks. *Front Neurosci* 2010; **4**: 200.
39. Liang X, Zou Q, He Y, Yang Y. Coupling of functional connectivity and regional cerebral blood flow reveals a physiological basis for network hubs of the human brain. *Proc Natl Acad Sci U S A* 2013; **110**(5): 1929-1934.
40. Di X, Kim EH, Huang CC, Tsai SJ, Lin CP, Biswal BB. The influence of the amplitude of low-frequency fluctuations on resting-state functional connectivity. *Front Hum Neurosci* 2013; **7**: 118.
41. Tomasi D, Shokri-Kojori E, Volkow ND. Temporal Changes in Local Functional Connectivity Density Reflect the Temporal Variability of the Amplitude of Low Frequency Fluctuations in Gray Matter. *PLoS One* 2016; **11**(4): e0154407.
42. Sheng J, Zhang L, Feng J, Liu J, Li A, Chen W *et al.* The coupling of BOLD signal variability and degree centrality underlies cognitive functions and psychiatric diseases. *Neuroimage* 2021; **237**: 118187.
43. Sato JR, Biazoli CE, Jr., Moura LM, Crossley N, Zugman A, Picon FA *et al.* Association Between Fractional Amplitude of Low-Frequency Spontaneous Fluctuation and Degree Centrality in Children and Adolescents. *Brain Connect* 2019; **9**(5): 379-387.
44. Garrett DD, Epp SM, Perry A, Lindenberger U. Local temporal variability reflects functional integration in the human brain. *Neuroimage* 2018; **183**: 776-787.

45. Wu CW, Gu H, Lu H, Stein EA, Chen JH, Yang Y. Mapping functional connectivity based on synchronized CMRO2 fluctuations during the resting state. *Neuroimage* 2009; **45**(3): 694-701.
46. Castrillon G, Epp S, Bose A, Fraticelli L, Hechler A, Belenya R *et al*. An energy costly architecture of neuromodulators for human brain evolution and cognition. *Sci Adv* 2023; **9**(50): eadi7632.
47. Stubbs JL, Taylor JJ, Siddiqi SH, Schaper FLWVJ, Cohen AL, Drew W *et al*. Heterogeneous neuroimaging findings across substance use disorders localize to a common brain network. *Nature Mental Health* 2023; **1**(10): 772-781.
48. Cash RFH, Müller VI, Fitzgerald PB, Eickhoff SB, Zalesky A. Altered brain activity in unipolar depression unveiled using connectomics. *Nature Mental Health* 2023; **1**(3): 174-185.
49. Peng S, Xu P, Jiang Y, Gong G. Activation network mapping for integration of heterogeneous fMRI findings. *Nature Human Behaviour* 2022; **6**(10): 1417-1429.
50. Roalf DR, Figue M, Oathes DJ. Elevating the field for applying neuroimaging to individual patients in psychiatry. *Transl Psychiatry* 2024; **14**(1): 87.
51. Dugré JR, Potvin S. Impaired attentional and socio-affective networks in subjects with antisocial behaviors: a meta-analysis of resting-state functional connectivity studies. *Psychol Med* 2021: 1-11.
52. Müller VI, Cieslik EC, Laird AR, Fox PT, Radua J, Mataix-Cols D *et al*. Ten simple rules for neuroimaging meta-analysis. *Neurosci Biobehav Rev* 2018; **84**: 151-161.
53. Eickhoff SB, Bzdok D, Laird AR, Kurth F, Fox PT. Activation likelihood estimation meta-analysis revisited. *Neuroimage* 2012; **59**(3): 2349-2361.
54. Eickhoff SB, Laird AR, Grefkes C, Wang LE, Zilles K, Fox PT. Coordinate-based activation likelihood estimation meta-analysis of neuroimaging data: A random-effects approach based on empirical estimates of spatial uncertainty. *Human brain mapping* 2009; **30**(9): 2907-2926.
55. Peng S, Xu P, Jiang Y, Gong G. Activation network mapping for integration of heterogeneous fMRI findings. *Nat Hum Behav* 2022; **6**(10): 1417-1429.
56. Nielsen JA, Zielinski BA, Fletcher PT, Alexander AL, Lange N, Bigler ED *et al*. Multisite functional connectivity MRI classification of autism: ABIDE results. *Front Hum Neurosci* 2013; **7**: 599.

57. Craddock C, Benhajali Y, Chu C, Chouinard F, Evans A, Jakab A *et al.* The neuro bureau preprocessing initiative: open sharing of preprocessed neuroimaging data and derivatives. *Front. Neuroinform.* 7. 2013.
58. Di Martino A, O'Connor D, Chen B, Alaerts K, Anderson JS, Assaf M *et al.* Enhancing studies of the connectome in autism using the autism brain imaging data exchange II. *Sci Data* 2017; **4**: 170010.
59. Winkler AM, Ridgway GR, Webster MA, Smith SM, Nichols TE. Permutation inference for the general linear model. *Neuroimage* 2014; **92**(100): 381-397.
60. McGrath H, Zaveri HP, Collins E, Jafar T, Chishti O, Obaid S *et al.* High-resolution cortical parcellation based on conserved brain landmarks for localization of multimodal data to the nearest centimeter. *Sci Rep* 2022; **12**(1): 18778.
61. Rolls ET, Huang CC, Lin CP, Feng J, Joliot M. Automated anatomical labelling atlas 3. *Neuroimage* 2020; **206**: 116189.
62. Edlow BL, Takahashi E, Wu O, Benner T, Dai G, Bu L *et al.* Neuroanatomic connectivity of the human ascending arousal system critical to consciousness and its disorders. *J Neuropathol Exp Neurol* 2012; **71**(6): 531-546.
63. Amunts K, Kedo O, Kindler M, Pieperhoff P, Mohlberg H, Shah NJ *et al.* Cytoarchitectonic mapping of the human amygdala, hippocampal region and entorhinal cortex: intersubject variability and probability maps. *Anat Embryol (Berl)* 2005; **210**(5-6): 343-352.
64. Neudorfer C, Germann J, Elias GJB, Gramer R, Boutet A, Lozano AM. A high-resolution in vivo magnetic resonance imaging atlas of the human hypothalamic region. *Sci Data* 2020; **7**(1): 305.
65. Liu X, Eickhoff SB, Hoffstaedter F, Genon S, Caspers S, Reetz K *et al.* Joint Multi-modal Parcellation of the Human Striatum: Functions and Clinical Relevance. *Neurosci Bull* 2020; **36**(10): 1123-1136.
66. Hansen JY, Shafiei G, Markello RD, Smart K, Cox SML, Nørgaard M *et al.* Mapping neurotransmitter systems to the structural and functional organization of the human neocortex. *Nature Neuroscience* 2022; **25**(11): 1569-1581.
67. Dukart J, Holiga S, Rullmann M, Lanzenberger R, Hawkins PCT, Mehta MA *et al.* JuSpace: A tool for spatial correlation analyses of magnetic resonance imaging data with nuclear imaging derived neurotransmitter maps. *Hum Brain Mapp* 2021; **42**(3): 555-566.
68. Dugré JR, Potvin S. Towards a Neurobiologically-driven Ontology of Mental Functions: A Data-driven Summary of the Twenty Years of Neuroimaging Meta-Analyses. *bioRxiv* 2023: 2023.2003.2029.534795.

69. Schaefer A, Kong R, Gordon EM, Laumann TO, Zuo XN, Holmes AJ *et al.* Local-Global Parcellation of the Human Cerebral Cortex from Intrinsic Functional Connectivity MRI. *Cereb Cortex* 2018; **28**(9): 3095-3114.
70. Fischl B, Salat DH, Busa E, Albert M, Dieterich M, Haselgrove C *et al.* Whole brain segmentation: automated labeling of neuroanatomical structures in the human brain. *Neuron* 2002; **33**(3): 341-355.
71. Buckner RL, Krienen FM, Castellanos A, Diaz JC, Yeo BT. The organization of the human cerebellum estimated by intrinsic functional connectivity. *J Neurophysiol* 2011; **106**(5): 2322-2345.
72. Piñero J, Saüch J, Sanz F, Furlong LI. The DisGeNET cytoscape app: Exploring and visualizing disease genomics data. *Computational and Structural Biotechnology Journal* 2021; **19**: 2960-2967.
73. Lotter LD, Kohl SH, Gerloff C, Bell L, Niephaus A, Kruppa JA *et al.* Revealing the neurobiology underlying interpersonal neural synchronization with multimodal data fusion. *Neuroscience & Biobehavioral Reviews* 2023; **146**: 105042.
74. Hawrylycz MJ, Lein ES, Guillozet-Bongaarts AL, Shen EH, Ng L, Miller JA *et al.* An anatomically comprehensive atlas of the adult human brain transcriptome. *Nature* 2012; **489**(7416): 391-399.
75. Markello RD, Arnatkeviciute A, Poline JB, Fulcher BD, Fornito A, Misic B. Standardizing workflows in imaging transcriptomics with the abagen toolbox. *Elife* 2021; **10**.
76. Aghajani M, Klapwijk ET, Andershed H, Fanti KA, van der Wee NJA, Vermeiren RRJM *et al.* Neural processing of socioemotional content in conduct-disordered juvenile offenders with limited prosocial emotions. *Progress in Neuro-Psychopharmacology and Biological Psychiatry* 2021; **105**: 110045.
77. Banich MT, Crowley TJ, Thompson LL, Jacobson BL, Liu X, Raymond KM *et al.* Brain activation during the Stroop task in adolescents with severe substance and conduct problems: A pilot study. *Drug Alcohol Depend* 2007; **90**(2-3): 175-182.
78. Cao W, Li C, Zhang J, Dong D, Sun X, Yao S *et al.* Regional Homogeneity Abnormalities in Early-Onset and Adolescent-Onset Conduct Disorder in Boys: A Resting-State fMRI Study. *Front Hum Neurosci* 2019; **13**: 26.
79. Crowley TJ, Dalwani MS, Mikulich-Gilbertson SK, Du YP, Lejuez CW, Raymond KM *et al.* Risky Decisions and Their Consequences: Neural Processing by Boys with Antisocial Substance Disorder. *PLOS ONE* 2010; **5**(9): e12835.

80. Crowley TJ, Dalwani MS, Mikulich-Gilbertson SK, Young SE, Sakai JT, Raymond KM *et al.* Adolescents' Neural Processing of Risky Decisions: Effects of Sex and Behavioral Disinhibition. *PLOS ONE* 2015; **10**(7): e0132322.
81. Decety J, Michalska KJ, Akitsuki Y, Lahey BB. Atypical empathic responses in adolescents with aggressive conduct disorder: A functional MRI investigation. *Biological Psychology* 2009; **80**(2): 203-211.
82. Dong D, Ming Q, Wang X, Yu W, Jiang Y, Wu Q *et al.* Temporoparietal Junction Hypoactivity during Pain-Related Empathy Processing in Adolescents with Conduct Disorder. *Front Psychol* 2016; **7**: 2085.
83. Ewbank MP, Passamonti L, Hagan CC, Goodyer IM, Calder AJ, Fairchild G. Psychopathic traits influence amygdala-anterior cingulate cortex connectivity during facial emotion processing. *Soc Cogn Affect Neurosci* 2018; **13**(5): 525-534.
84. Fairchild G, Hagan CC, Passamonti L, Walsh ND, Goodyer IM, Calder AJ. Atypical neural responses during face processing in female adolescents with conduct disorder. *J Am Acad Child Adolesc Psychiatry* 2014; **53**(6): 677-687.e675.
85. Fehlbauer LV, Raschle NM, Menks WM, Prätzlich M, Flemming E, Wyss L *et al.* Altered Neuronal Responses During an Affective Stroop Task in Adolescents With Conduct Disorder. *Front Psychol* 2018; **9**: 1961.
86. Finger EC, Marsh AA, Blair KS, Reid ME, Sims C, Ng P *et al.* Disrupted reinforcement signaling in the orbitofrontal cortex and caudate in youths with conduct disorder or oppositional defiant disorder and a high level of psychopathic traits. *Am J Psychiatry* 2011; **168**(2): 152-162.
87. Gatzke-Kopp LM, Beauchaine TP, Shannon KE, Chipman J, Fleming AP, Crowell SE *et al.* Neurological correlates of reward responding in adolescents with and without externalizing behavior disorders. *J Abnorm Psychol* 2009; **118**(1): 203-213.
88. Herpertz SC, Huebner T, Marx I, Vloet TD, Fink GR, Stoecker T *et al.* Emotional processing in male adolescents with childhood-onset conduct disorder. *J Child Psychol Psychiatry* 2008; **49**(7): 781-791.
89. Hwang S, Nolan ZT, White SF, Williams WC, Sinclair S, Blair RJ. Dual neurocircuitry dysfunctions in disruptive behavior disorders: emotional responding and response inhibition. *Psychol Med* 2016; **46**(7): 1485-1496.
90. Hwang S, Meffert H, VanTieghem MR, Sinclair S, Bookheimer SY, Vaughan B *et al.* Dysfunctional Social Reinforcement Processing in Disruptive Behavior Disorders: An Functional Magnetic Resonance Imaging Study. *Clin Psychopharmacol Neurosci* 2018; **16**(4): 449-460.

91. Klapwijk ET, Aghajani M, Colins OF, Marijnissen GM, Popma A, van Lang ND *et al.* Different brain responses during empathy in autism spectrum disorders versus conduct disorder and callous-unemotional traits. *J Child Psychol Psychiatry* 2016; **57**(6): 737-747.
92. Klapwijk ET, Lelieveld GJ, Aghajani M, Boon AE, van der Wee NJ, Popma A *et al.* Fairness decisions in response to emotions: a functional MRI study among criminal justice-involved boys with conduct disorder. *Soc Cogn Affect Neurosci* 2016; **11**(4): 674-682.
93. Lu FM, Zhou JS, Wang XP, Xiang YT, Yuan Z. Short- and long-range functional connectivity density alterations in adolescents with pure conduct disorder at resting-state. *Neuroscience* 2017; **351**: 96-107.
94. Lu F, Liu P, Chen H, Wang M, Xu S, Yuan Z *et al.* More than just statics: Abnormal dynamic amplitude of low-frequency fluctuation in adolescent patients with pure conduct disorder. *J Psychiatr Res* 2020; **131**: 60-68.
95. Lu F, Zhao Y, He Z, Ma X, Yao X, Liu P *et al.* Altered dynamic regional homogeneity in patients with conduct disorder. *Neuropsychologia* 2021; **157**: 107865.
96. Mathur A, Bashford-Largo J, Elowsky J, Zhang R, Dobbertin M, Tyler PM *et al.* Association Between Aggression and Differential Functional Activity of Neural Regions Implicated in Retaliation. *Journal of the American Academy of Child & Adolescent Psychiatry* 2023; **62**(7): 805-815.
97. Menks WM, Fehlbauer LV, Borbás R, Sterzer P, Stadler C, Raschle NM. Eye gaze patterns and functional brain responses during emotional face processing in adolescents with conduct disorder. *NeuroImage: Clinical* 2021; **29**: 102519.
98. Passamonti L, Fairchild G, Goodyer IM, Hurford G, Hagan CC, Rowe JB *et al.* Neural abnormalities in early-onset and adolescence-onset conduct disorder. *Arch Gen Psychiatry* 2010; **67**(7): 729-738.
99. Raschle NM, Fehlbauer LV, Menks WM, Martinelli A, Prätzlich M, Bernhard A *et al.* Atypical Dorsolateral Prefrontal Activity in Female Adolescents With Conduct Disorder During Effortful Emotion Regulation. *Biol Psychiatry Cogn Neurosci Neuroimaging* 2019; **4**(11): 984-994.
100. Rubia K, Halari R, Smith AB, Mohammed M, Scott S, Giampietro V *et al.* Dissociated functional brain abnormalities of inhibition in boys with pure conduct disorder and in boys with pure attention deficit hyperactivity disorder. *Am J Psychiatry* 2008; **165**(7): 889-897.
101. Rubia K, Smith AB, Halari R, Matsukura F, Mohammad M, Taylor E *et al.* Disorder-specific dissociation of orbitofrontal dysfunction in boys with pure conduct disorder

- during reward and ventrolateral prefrontal dysfunction in boys with pure ADHD during sustained attention. *Am J Psychiatry* 2009; **166**(1): 83-94.
102. Rubia K, Halari R, Smith AB, Mohammad M, Scott S, Brammer MJ. Shared and disorder-specific prefrontal abnormalities in boys with pure attention-deficit/hyperactivity disorder compared to boys with pure CD during interference inhibition and attention allocation. *J Child Psychol Psychiatry* 2009; **50**(6): 669-678.
  103. Rubia K, Halari R, Cubillo A, Mohammad AM, Scott S, Brammer M. Disorder-specific inferior prefrontal hypofunction in boys with pure attention-deficit/hyperactivity disorder compared to boys with pure conduct disorder during cognitive flexibility. *Hum Brain Mapp* 2010; **31**(12): 1823-1833.
  104. White SF, Williams WC, Brislin SJ, Sinclair S, Blair KS, Fowler KA *et al.* Reduced activity within the dorsal endogenous orienting of attention network to fearful expressions in youth with disruptive behavior disorders and psychopathic traits. *Development and Psychopathology* 2012; **24**(3): 1105-1116.
  105. White SF, Marsh AA, Fowler KA, Schechter JC, Adalio C, Pope K *et al.* Reduced amygdala response in youths with disruptive behavior disorders and psychopathic traits: decreased emotional response versus increased top-down attention to nonemotional features. *Am J Psychiatry* 2012; **169**(7): 750-758.
  106. White SF, Pope K, Sinclair S, Fowler KA, Brislin SJ, Williams WC *et al.* Disrupted expected value and prediction error signaling in youths with disruptive behavior disorders during a passive avoidance task. *Am J Psychiatry* 2013; **170**(3): 315-323.
  107. White SF, Fowler KA, Sinclair S, Schechter JC, Majestic CM, Pine DS *et al.* Disrupted expected value signaling in youth with disruptive behavior disorders to environmental reinforcers. *J Am Acad Child Adolesc Psychiatry* 2014; **53**(5): 579-588.e579.
  108. White SF, VanTieghem M, Brislin SJ, Sypher I, Sinclair S, Pine DS *et al.* Neural Correlates of the Propensity for Retaliatory Behavior in Youths With Disruptive Behavior Disorders. *Am J Psychiatry* 2016; **173**(3): 282-290.
  109. Wu Q, Zhang X, Dong D, Wang X, Yao S. Altered spontaneous brain activity in adolescent boys with pure conduct disorder revealed by regional homogeneity analysis. *Eur Child Adolesc Psychiatry* 2017; **26**(7): 827-837.
  110. Zhou J, Yao N, Fairchild G, Zhang Y, Wang X. Altered hemodynamic activity in conduct disorder: a resting-state fMRI investigation. *PLoS One* 2015; **10**(3): e0122750.
  111. Zhang J, Li B, Gao J, Shi H, Wang X, Jiang Y *et al.* Impaired Frontal-Basal Ganglia Connectivity in Male Adolescents with Conduct Disorder. *PLoS One* 2015; **10**(12): e0145011.

112. Zhang R, Aloji J, Bajaj S, Bashford-Largo J, Lukoff J, Schwartz A *et al.* Dysfunction in differential reward-punishment responsiveness in conduct disorder relates to severity of callous-unemotional traits but not irritability. *Psychol Med* 2023; **53**(5): 1870-1880.
113. Blair RJ. Applying a cognitive neuroscience perspective to the disorder of psychopathy. *Dev Psychopathol* 2005; **17**(3): 865-891.
114. Baskin-Sommers A, Brazil IA. The importance of an exaggerated attention bottleneck for understanding psychopathy. *Trends Cogn Sci* 2022; **26**(4): 325-336.
115. Lykken DT. *The antisocial personalities*. Lawrence Erlbaum Associates, Inc: Hillsdale, NJ, US, 1995, x, 259-x, 259pp.
116. Hare RD. Temporal gradient of fear arousal in psychopaths. *Journal of Abnormal Psychology* 1965; **70**(6): 442-445.
117. Eysenck HJ, Eysenck SB. The biological basis of personality. *Personality Structure and Measurement (Psychology Revivals)*. Routledge 2013, pp 49-62.
118. Lorber MF. Psychophysiology of aggression, psychopathy, and conduct problems: a meta-analysis. *Psychol Bull* 2004; **130**(4): 531-552.
119. Ortiz J, Raine A. Heart rate level and antisocial behavior in children and adolescents: a meta-analysis. *J Am Acad Child Adolesc Psychiatry* 2004; **43**(2): 154-162.
120. Portnoy J, Farrington DP. Resting heart rate and antisocial behavior: An updated systematic review and meta-analysis. *Aggression and Violent Behavior* 2015; **22**: 33-45.
121. Latvala A, Kuja-Halkola R, Rück C, D'Onofrio BM, Jernberg T, Almqvist C *et al.* Association of Resting Heart Rate and Blood Pressure in Late Adolescence With Subsequent Mental Disorders: A Longitudinal Population Study of More Than 1 Million Men in Sweden. *JAMA Psychiatry* 2016; **73**(12): 1268-1275.
122. Murray J, Hallal PC, Mielke GI, Raine A, Wehrmeister FC, Anselmi L *et al.* Low resting heart rate is associated with violence in late adolescence: a prospective birth cohort study in Brazil. *International Journal of Epidemiology* 2016; **45**(2): 491-500.
123. Forte G, Favieri F, Casagrande M. Heart Rate Variability and Cognitive Function: A Systematic Review. *Front Neurosci* 2019; **13**: 710.
124. Magnon V, Vallet GT, Benson A, Mermillod M, Chausse P, Lacroix A *et al.* Does heart rate variability predict better executive functioning? A systematic review and meta-analysis. *Cortex* 2022; **155**: 218-236.
125. Balleine BW. Neural bases of food-seeking: affect, arousal and reward in corticostriatolimbic circuits. *Physiol Behav* 2005; **86**(5): 717-730.



126. Moruzzi G, Magoun HW. Brain stem reticular formation and activation of the EEG. *Electroencephalography and Clinical Neurophysiology* 1949; **1**(1): 455-473.
127. Jones BE. Arousal systems. *Front Biosci* 2003; **8**: s438-451.
128. Beissner F, Meissner K, Bär KJ, Napadow V. The autonomic brain: an activation likelihood estimation meta-analysis for central processing of autonomic function. *J Neurosci* 2013; **33**(25): 10503-10511.
129. Bours C, Bakker-Huvenaars MJ, Tramper J, Bielczyk N, Scheepers F, Nijhof KS *et al.* Emotional face recognition in male adolescents with autism spectrum disorder or disruptive behavior disorder: an eye-tracking study. *Eur Child Adolesc Psychiatry* 2018; **27**(9): 1143-1157.
130. Martin-Key NA, Graf EW, Adams WJ, Fairchild G. Facial emotion recognition and eye movement behaviour in conduct disorder. *J Child Psychol Psychiatry* 2018; **59**(3): 247-257.
131. Sebastian CL, McCrory EJ, Dadds MR, Cecil CA, Lockwood PL, Hyde ZH *et al.* Neural responses to fearful eyes in children with conduct problems and varying levels of callous-unemotional traits. *Psychol Med* 2014; **44**(1): 99-109.
132. Schwenck C, Mergenthaler J, Keller K, Zech J, Salehi S, Taurines R *et al.* Empathy in children with autism and conduct disorder: group-specific profiles and developmental aspects. *J Child Psychol Psychiatry* 2012; **53**(6): 651-659.
133. Pessoa L, Adolphs R. Emotion processing and the amygdala: from a 'low road' to 'many roads' of evaluating biological significance. *Nat Rev Neurosci* 2010; **11**(11): 773-783.
134. Mishkin M, Ungerleider LG, Macko KA. Object vision and spatial vision: two cortical pathways. *Trends in Neurosciences* 1983; **6**: 414-417.
135. Pitcher D, Ungerleider LG. Evidence for a Third Visual Pathway Specialized for Social Perception. *Trends Cogn Sci* 2021; **25**(2): 100-110.
136. Libby LA, Ekstrom AD, Ragland JD, Ranganath C. Differential connectivity of perirhinal and parahippocampal cortices within human hippocampal subregions revealed by high-resolution functional imaging. *J Neurosci* 2012; **32**(19): 6550-6560.
137. Poppenk J, Moscovitch M. A hippocampal marker of recollection memory ability among healthy young adults: contributions of posterior and anterior segments. *Neuron* 2011; **72**(6): 931-937.
138. Dugré JR, Potvin S. Clarifying the role of Cortico-Cortical and Amygdalo-Cortical brain dysconnectivity associated with Conduct Problems. *Neuroimage Clin* 2023; **37**: 103346.

139. Kohls G, Fairchild G, Bernhard A, Martinelli A, Smaragdi A, Gonzalez-Madruga K *et al.* Neuropsychological Subgroups of Emotion Processing in Youths With Conduct Disorder. *Front Psychiatry* 2020; **11**: 585052.
140. Adolphs R, Gläscher J, Tranel D. Searching for the neural causes of criminal behavior. *Proc Natl Acad Sci U S A* 2018; **115**(3): 451-452.