

Table S1: Excluded Patient Samples

None (included in study)	211
Unacceptable Treatment Regimen	39
Excessive Time to Treatment	18
Unacceptable Specimen Site	17
Incomplete Data	14
Insufficient Material	10
Other Ineligible*	18
Tumor cellularity	48
Fail RNA QC	13
Fail Library QC	10
Fail Analytical QC	15
Withdrawn	2
Total	415
<i>Note:</i>	
*Includes excluded diagnoses, inconsistent data, site sending wrong material, and other violations of inclusion/exclusion criteria	

Table S2. HUGO gene designations of input genes for model development

C2	PTPRC	HLA-DRA	C1QB	CD3E	FCER1G	C3AR1	CCL4
DOCK8	LILRB4	CCR5	CCL3L3	CXCR3	GZMH	GPR65	CD80
STAT2	DRAM1	IL21R	TNFAIP3	PSMB9	IL15	GBP5	CD300LF
RNF19B	ETV7	CD96	CXCL11	TMEM140	PLAUR	ISG20	IFNG
SLC15A3	GPR171	APOL3	RIPK2	LILRB2	SLA2	ICAM1	SPI1
IFIT2	SIRPG	CCL5	CD69	IL15RA	TRANK1	CD74	DOK2
IFI30	TAP2	IL2RB	TRIM21	HLA-B	WARS	GBP2	STAT4
CXCL10	PARP14	CD163	SP100	SAMSN1	PDCD1	CD2	CD300A
JAK2	FPR3	UHRF2	NLRC5	UBA7	CSF1	LAG3	RANBP6
HAPLN3	SH2D1A	DNAJA1	ZBP1	BTN3A1	IL18BP	CTSL	
PLGRKT	SRGN	BATF2	SIGLEC10	CXCR6	PDCD1LG2	CD3G	
CDC37L1	UBE2L6	CD274	IDO1	DDX58	SAMHD1	GPR84	
EPST11	TIGIT	IFIH1	BTN3A3	PPP1R18	ITGAL	CIITA	
HLA-F	FCGR1A	TNFRSF9	GZMA	GBP1	CCL8	C1QC	
ITK	STAT1	SP110	TRIM22	FGL2	STX11	TAP1	
GPLY	SLAMF8	GZMB	HLA-DRB1	NKG7	LAP3	TNFSF13B	
LCP2	IL2RA	FCGR3A	PRF1	GBP3	CTLA4	IRF1	
HAVCR2	APOL6	IFIT3	IL12RB1	MYO7A	CD86	ICOS	
FASLG	GBP4	TLR8	CCR1	STK10	CXCL9	PLA2G7	
RNF213	CD8A	FCGR2A	PTPN22	B2M	RIC1	SAMD9L	

Table S3. Inclusion/exclusion criteria

Inclusion criteria:	
1.	Subject must have been diagnosed with recurrent or metastatic head and neck squamous cell carcinoma (RM-HNSCC).
2.	Subject must have received, or been scheduled to receive, at least one dose of anti-PD-1 immunotherapy for treatment of their cancer.
3.	Subject must have received, or been scheduled to receive, anti-PD-1 treatment on one of the following regimens: A. Pembrolizumab or nivolumab as a single agent (monotherapy) B. Pembrolizumab or nivolumab in combination with platinum chemotherapy, with or without fluorouracil or a taxane (chemo-immunotherapy)
4.	Subject must have had, or will have had, a tumor biopsy prior to treatment with anti-PD-1 immunotherapy (specimen is considered pre-treatment).
5.	Clinician must have evaluated, or will have evaluated, tumor response to anti-PD-1 immunotherapy using (1) imaging data performed to assess response to anti-PD-1 treatment and/or (2) clinical assessment. Imaging data must include both (a) pre-anti-PD-1-treatment imaging and (b) imaging performed after the start of anti-PD-1 treatment).
6.	Subject is willing to provide informed consent per IRB-approved protocol.
7.	Subject must have sufficient tissue available to fulfill the specimen requirements of the study.
8.	Subject is 18 years of age or older.
Exclusion criteria:	
1.	Subjects who did not have head and neck squamous cell carcinoma (other histologies).
2.	Subjects who only received anti-PD-1 immunotherapy in the newly diagnosed, curative setting.
3.	Subjects who received anti-PD-1 immunotherapy in combination with a treatment other than platinum chemotherapy (with or without fluorouracil or a taxane).
4.	Subjects whose response to anti-PD-1 immunotherapy is not available either as (a) clinician's evaluation of that response or (b) imaging data that was performed to assess response to anti-PD-1 immunotherapy.

Table S4. OncoPrism-HNSCC model is not predictive in non-ICI datasets

dataset	Number of samples	OncoPrism-HNSCC model
TCGA-HNSC	500	0.32
GSE65858	290	0.66
GSE40774	90	0.56
GSE41613	97	0.71

*Notes: the p-values represent p-values for log rank test done on a Cox proportional hazards model.

Table S5. PD-L1 performance metrics

Cohort	Comparison	Accuracy	PPV*	NPV*	Sensitivity	Specificity
Cohort 1 (monotherapy)	CPS<1 vs CPS≥1	52%	48%	75%	93%	18%
Cohort 1 (monotherapy)	CPS<20 vs CPS≥20	58%	55%	60%	43%	71%
Cohort 2 (chemo-immunotherapy)	CPS<1 vs CPS≥1	60%	60%	60%	93%	15%
Cohort 2 (chemo-immunotherapy)	CPS<20 vs CPS≥20	60%	76%	52%	46%	80%

*Notes: PPV=positive predictive value; NPV=negative predictive value

Table S6: Comparison of OncoPrism and PD-L1 CPS

	PD-L1 TP	PD-L1 FN	PD-L1 TN	PD-L1 FP
OncoPrism TP	32	1	-	-
OncoPrism FN	21	3	-	-
OncoPrism TN	-	-	8	32
OncoPrism FP	-	-	1	14

Abbreviations:

TP, True Positive, correctly predicted disease control;

FN, False Negative, disease control incorrectly predicted as no disease control;

TN, True Negative, correctly predicted no disease control;

FP, False Positive, no disease control incorrectly predicted as disease control

Table S7: Comparison of OncoPrism and TMB

	TMB TP	TMB FN	TMB TN	TMB FP
OncoPrism TP	2	9	-	-
OncoPrism FN	1	1	-	-
OncoPrism TN	-	-	10	0
OncoPrism FP	-	-	9	0

Abbreviations:

TP, True Positive, correctly predicted disease control;

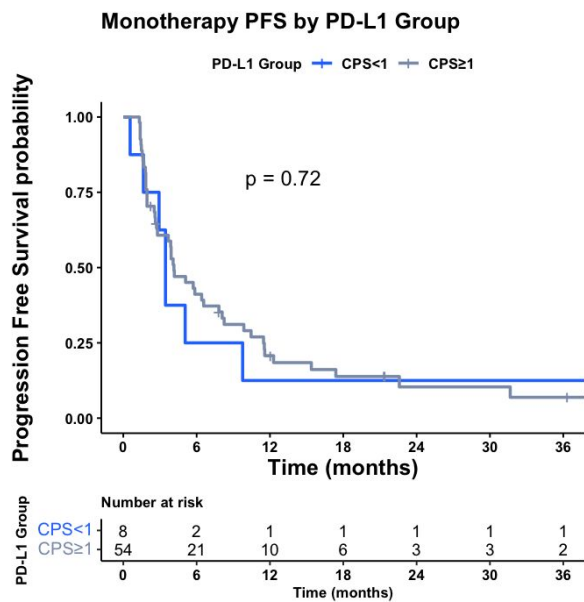
FN, False Negative, disease control incorrectly predicted as no disease control;

TN, True Negative, correctly predicted no disease control;

FP, False Positive, no disease control incorrectly predicted as disease control

Figure S1: PD-L1 does not predict PFS

A



B

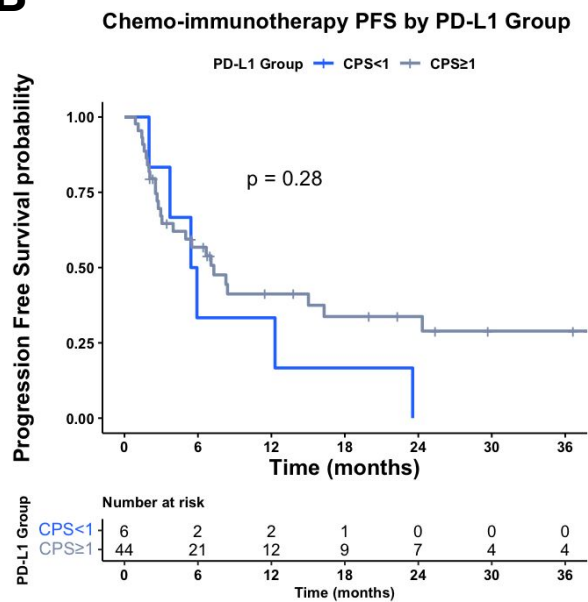


Figure S2: OncoPrism-HNSCC predicts PFS in PD-L1 positive patients

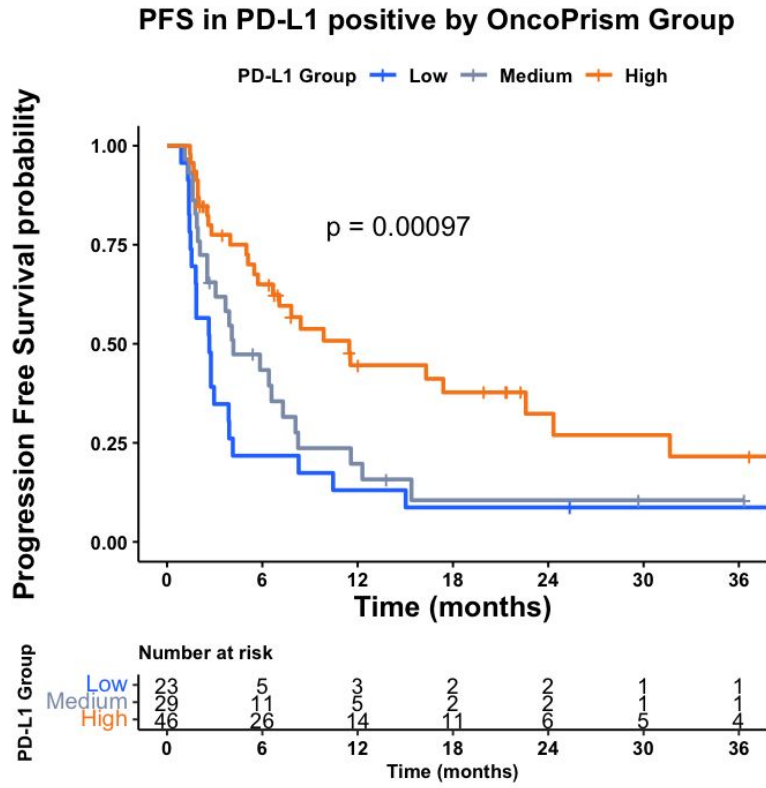


Figure S3. Discordant PD-L1/TMB Rate and Treatment Prioritization

A

PD-L1 Discordance Treatment Prioritization		
	PD-L1 (-)	PD-L1 (+)
OncoPrism-HNSCC Low	non-ICI (7% of study)	non-ICI (31% of study)
OncoPrism-HNSCC High	ICI (3% of study)	ICI (60% of study)

B

TMB Discordance Treatment Prioritization		
	TMB-Low	TMB-High
OncoPrism-HNSCC Low	non-ICI (34% of study)	non-ICI (3% of study)
OncoPrism-HNSCC High	ICI (56% of study)	ICI (6% of study)