

1 **Unveiling the role of mosquito and human diel activity patterns in the**
2 **risk of mosquito-borne disease infection**

3

4 Paulo C. Ventura¹, Andre B.B. Wilke¹, Jagadeesh Chitturi¹, Allisandra G. Kummer¹,
5 Snigdha Agrawal¹, Chalmers Vasquez², Yaziri Gonzalez³, Maria Litvinova⁴, John-Paul
6 Mutebi², Marco Ajelli^{1,*}

7

8 ¹ Laboratory for Computational Epidemiology and Public Health, Department of
9 Epidemiology and Biostatistics, Indiana University School of Public Health, Bloomington,
10 Indiana, USA

11 ² Miami-Dade County Mosquito Control Division, Miami, Florida, USA

12 ³ City of Brownsville, Department of Health, Wellness, and Animal Services, Brownsville,
13 Texas, USA

14 ⁴ Department of Epidemiology and Biostatistics, Indiana University School of Public
15 Health, Bloomington, Indiana, USA

16 * Corresponding author: majelli@iu.edu

17 **Abstract**

18 **Background**

19 Mosquito-borne pathogens are transmitted through bites of female mosquito vectors that
20 are actively seeking hosts for a blood meal and hosts, when either of them is infectious.
21 Different mosquito species have different preferences for the time of the day/night when
22 they actively seek blood meals. In the United States, the encounters between mosquito
23 vectors and human hosts primarily take place outdoors. Socioeconomic factors such as
24 occupation and income are major determinants of the hour of the day and total amount
25 of time spent outdoors by different population groups. The aim of this study is to quantify:
26 i) diel variations in the level of human exposure to mosquito vectors, and ii) exposure
27 heterogeneities by human population group.

28 **Methods**

29 We collected both diel activity data for two mosquito vector species (*Aedes aegypti* and
30 *Culex quinquefasciatus*) and time-use data for the United States. Then, we analyzed the
31 diel overlap between the two at the population level and by human population group.

32 **Results**

33 For both mosquito species, we found a substantial heterogeneity in their diel overlap with
34 human outdoors activities. We estimated that the time periods with the highest risk of
35 exposure to bites of *Ae. aegypti* are 7am-11am and 5pm-8pm, while the highest risk for
36 *Cx. Quinquefasciatus* is 6am-7am and 6pm-9pm. Moreover, we found disparities in the
37 exposure to mosquito vector species across different demographic groups. Workers with
38 primarily outdoor occupations, males, and Hispanics/Latinos were shown to have higher
39 levels of exposure as compared to the general population. In particular, we estimated that
40 workers with primarily outdoor occupations were 7.50-fold (95%CI: 7.18-7.84) and 6.63-
41 fold (95%CI: 6.09-7.35) more exposed to *Ae. aegypti* and *Cx. quinquefasciatus* than the
42 general population, respectively.

43 **Conclusion**

44 This study serves as a steppingstone to quantify the risk of exposure to mosquito vector
45 species in the United States. The obtained results can be instrumental for the design of
46 public health interventions such as education campaigns, which could contribute to
47 improve health and health equity.

48

49 **Keywords:** *Aedes aegypti*; *Culex quinquefasciatus*; dengue; West Nile virus; health
50 disparities.

51 Introduction

52 With millions of cases and thousands of deaths reported every year, mosquito-borne
53 diseases represent a major global public health threat [1,2]. Over the past fifty years,
54 there has been a significant increase in global dengue incidence [3], with estimates
55 pointing to 300 million infections every year [4]. The introduction of Zika in the Americas
56 in 2015 resulted in an epidemic exceeding 1 million reported cases [5,6]. Malaria remains
57 a substantial public health burden, causing over 500,000 deaths annually [7]. Albeit on a
58 smaller scale, the United States has witnessed a surge in local outbreaks of mosquito-
59 borne diseases in recent years [8,9]. For instance, Miami-Dade County, Florida, has
60 experienced local dengue outbreaks for the last three consecutive years (i.e., 2022-2024)
61 [9]. For the first time in the last 20 years, the Centers for Disease Control and Prevention
62 (CDC) reported locally acquired cases of *Plasmodium vivax* malaria in Florida and Texas
63 in 2023 [10]. Moreover, between 1999 and 2022, the United States reported 56,575 cases
64 of West Nile virus infection, resulting in 25,777 hospitalizations and 2,776 fatalities, with
65 the largest outbreak ever reported taking place in Maricopa County, Arizona, in 2021. [11].

66 Mosquito-borne pathogens are transmitted through bites of female mosquito vectors that
67 are actively seeking hosts for a blood meal and hosts, when either of them is infectious
68 [12]. Different mosquito species have different preferences for the time of the day/night
69 when they actively seek blood meals. For example, *Aedes aegypti* (a primary vector for
70 dengue, Zika, and chikungunya viruses) is a crepuscular species [13,14]; on the other
71 hand, *Culex quinquefasciatus* (a primary vector for West Nile virus and St. Louis
72 Encephalitis Virus) is mostly active at night [13,14]. In the United States, the encounters
73 between mosquito vectors and human hosts primarily occur outdoors [10,14–16].
74 Socioeconomic factors such as occupation and income are major determinants of the
75 hour of the day and total amount of time spent outdoors leading to differences between
76 population groups (e.g., gender, racial/ethnic) [17,18].

77 The aim of this study is to quantify: i) diel variations in the level of human exposure to
78 mosquito vectors, and ii) exposure heterogeneities by human population group. To this
79 aim, we collected both diel activity data for two mosquito vector species (*Ae. aegypti* and
80 *Cx. quinquefasciatus*) and (human) time-use data for the United States. These data are
81 used to quantify the diel overlap between the two mosquito vector species and the human
82 population both at the population level and by human population group. By shedding light
83 on the overlap between human and mosquito vector activities, our study could be
84 instrumental for the design of public health interventions such as education campaigns,
85 which could contribute to improve health and health equity.

86

87 Methods

88 Mosquito diel activity data

89 Diel activity data for *Ae. aegypti* and *Cx. quinquefasciatus* was retrieved from our previous
90 studies [13,14]. Briefly, in those studies, mosquitoes were collected by BG-Sentinel 2
91 traps (Biogents AG, Regensburg, Germany) baited with BG Lures and dry ice. Mosquitoes
92 were collected once a month every hour for 96 consecutive hours in four locations within
93 two study sites: Miami-Dade County, Florida, and Brownsville, Texas. Collected

94 mosquitoes were kept under refrigeration until identified to species on chill tables
95 according to entomological keys [19]. For details on the data collection, we refer the
96 reader to the two original studies [13,14].

97

98 **Human diel activity data**

99 To infer human outdoor diel activity patterns, we used data from the American Time Use
100 Survey (ATUS) [20]. The ATUS data is collected from a sample of the US resident
101 population that is representative by race/ethnicity, gender, and occupation. Each
102 participant reports their activities according to a list of 17 first-tier categories, which is
103 further subdivided into two additional tier categories. For each participant, the data is
104 collected for a 24-hour period with minute resolution. The participants can optionally
105 inform the location type of the activity from a list of 24 single-tier categories. This data is
106 openly available along with detailed socio-demographic information for each participant
107 [20]. We collected time-used data for every participant between 2014 and 2019. For each
108 collected year of data, we restricted our analysis to the period between May and
109 September, as it corresponds to the period when the majority of locally acquired infections
110 of mosquito-borne diseases in the contiguous United States take place [9,11].

111

112 **Estimation of the time spent outdoors**

113 Following the methodology of Hoehne et al. [21], we classified their activities as taking
114 place indoors, outdoors, or at an unknown/mixed location. When the participant reported
115 the location where the activity took place, we coded the time spent in that location as
116 either indoors or outdoors depending on the location type. Instead, when a respondent
117 reported to be working, the activity was classified based on the respondent's occupation
118 (see Supplementary Material for details).

119

120 **Estimation of the exposure to mosquito vectors**

121 To estimate the risk of exposure to bites of mosquito vectors by hour of the day relative
122 to 6pm (which is used as reference hour), we used the following equation:

$$123 \quad risk_{s,g}(h) = \frac{\alpha_g(h)}{\alpha_g(6pm)} \cdot A_s(h)$$

124 where:

- 125 • s represents the analyzed mosquito species, namely *Aedes aegypti* or *Culex*
126 *quinquefasciatus*.
- 127 • g represents the human population group, namely the general population, occupation
128 (outdoor; indoor/mixed), race/ethnicity (Hispanic; Non-Hispanic White; Non-Hispanic
129 Black; Non-Hispanic Other), gender (female; male), or income (low; middle; high).
- 130 • h represents the hour of the day.
- 131 • $\alpha_g(h) = \frac{\sum_{i \in g} w_i \cdot O_i(h)/60}{\sum_{i \in g} w_i}$ is the probability that an individual of group g is outdoor at hour
132 of the day h . In the equation for $\alpha_g(h)$, i represents a survey participant that belongs

133 to population group g ; w_i represents the weight of participant i provided by the ATUS
134 survey to obtain a US-representative population; $O_i(h)$ represents the number of
135 minutes that participant i spent outdoors during hour h .

136 • $A_s(h) = \frac{n_s(h)}{n_s(6pm)}$ is the proportion of female mosquitoes of species s that are actively
137 seek hosts for blood meal at hour h relative to 6pm. In the equation for $A_s(h)$, $n_s(h)$
138 represents the number of collected mosquitoes of species s at hour h .

139 Note that as reference hour, we used 6pm since at that time both the focus mosquito
140 species show some level of host seeking behavior and human hosts show some level of
141 outdoor activity.

142 To estimate the risk of exposure to bites of mosquito vectors by human population group
143 relative to the general population, we used the following equation:

144
$$\overline{risk}_s(g) = \frac{\sum_{h=1, \dots, 24} risk_{s,g}(h)}{\sum_{h=1, \dots, 24} risk_{s,[general\ population]}(h)}$$

145

146 Estimation of the uncertainty

147 To estimate uncertainty in mosquito diel activity, we model the collection of specimens as
148 a binomial process. Each specimen in the entire mosquito population can be trapped and
149 collected with a certain probability. Assuming that the actual number of specimens in the
150 population is much larger than the number of collected ones (i.e., that the probability of
151 collection is small), we can approximate this to a Poisson process. Under this assumption,
152 the uncertainty for each number of collected specimens was estimated as the 95% IQR
153 of a Poisson distribution whose average is the value observed in the field.

154 To estimate uncertainty on human diel activity, we performed a bootstrap sampling. In
155 each iteration, we resampled the set of individuals and performed the classification
156 analysis with the new ensemble.

157 The uncertainty on the estimates presented in this study are the result of 1,000 samples
158 from a Poisson distribution and 1,000 independent bootstrap iterations.

159 Results

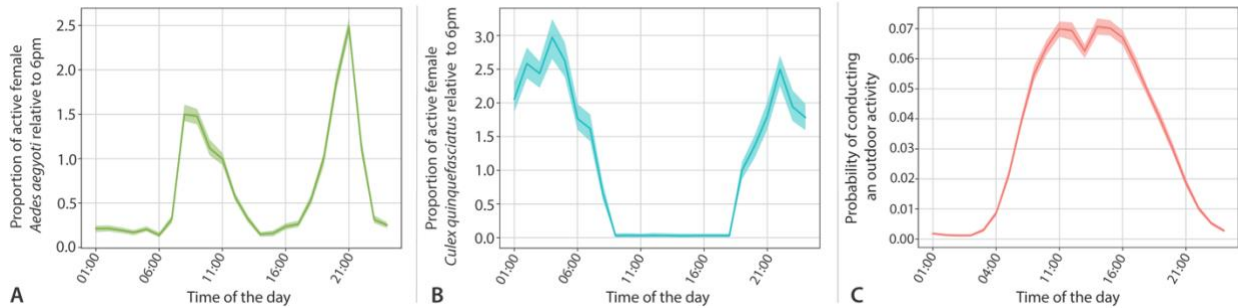
160 Mosquito and human activity patterns by hour of the day

161 Both analyzed mosquito species show well-defined species-specific diel activity patterns
162 (Fig. 1A, 1B). Females of *Ae. aegypti* are highly active in seeking hosts for blood meals
163 between 7am and 10am, and between 6pm and 9pm (Fig. 1A). We found the hour of
164 maximum activity to be 8 pm, when we estimated a proportion of active female
165 mosquitoes of 2.49 (95%CI: 2.39-2.57) as compared to 6pm; the hour of lowest activity
166 was 12 am, when the proportion of active female mosquitoes as compared to 6pm was
167 of 0.21 (95%CI: 0.17-0.24).

168 Females of *Cx. quinquefasciatus* were primarily active in seeking hosts for blood meals
169 between 6pm and 7am (Fig. 1B). The hour of maximum activity was 3 am, with an
170 estimated proportion of active female mosquitoes of 2.97 (95%CI: 2.65-3.24) as
171 compared to 6pm; no substantial activity was estimated between 8 am and 5pm.

172 We found that human activity patterns follow a diurnal cycle, with daytime hours marked
173 by heightened outdoor activity levels due to work, education, and social engagements
174 (Fig. 1C). We found the period with highest outdoor activity level to span from 9 am to 4
175 pm when 6-7% of the population spends time outdoors.

176



177

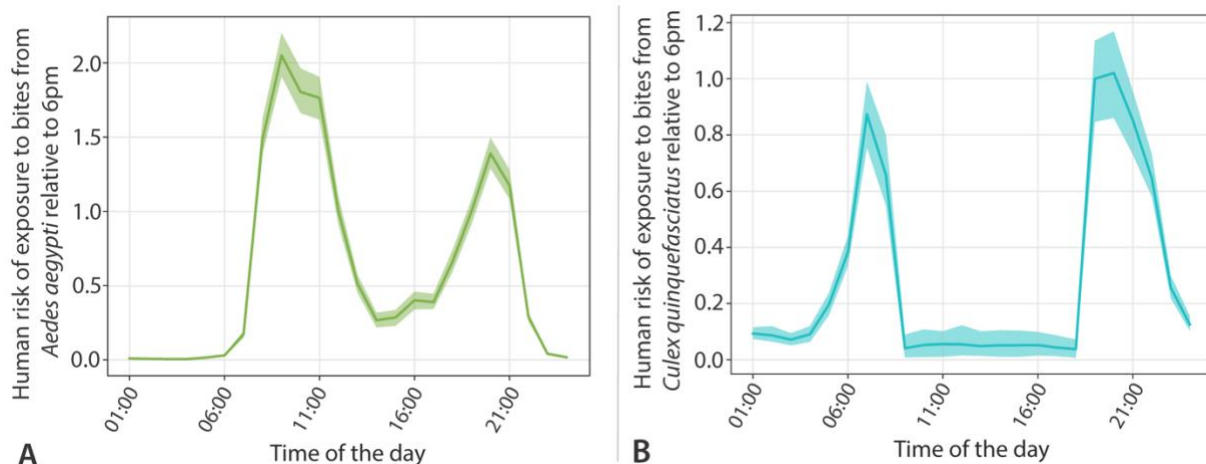
178 **Figure 1. Mosquito and human diel activity patterns.** **A** Proportion of female *Ae. aegypti* that
179 are actively seek hosts for blood meal at a given hour of the day relative to 6pm. **B** Same as A
180 but for *Cx. quinquefasciatus*. **C** Probability that a US resident is conducting an outdoor activity at
181 a given hour of the day.

182

183 Risk of exposure to mosquito vectors by hour of the day

184 By studying the overlap between human and mosquito activities, we found a well-defined
185 pattern with two peaks per day of high level of exposure (Fig. 2A-B). However, these
186 peaks take place at different time for the two analyzed mosquito species. Specifically, we
187 found high exposure levels to *Ae. aegypti* between 7am-11am and 5pm-8pm (Fig. 2A),
188 with maximum exposure taking place at 8 am (exposure risk: 2.05, 95%CI: 1.91-2.20,
189 relative to 6 pm). For *Cx. quinquefasciatus* (Fig. 2B), the periods of highest exposure
190 found between 6am-7am and 6pm-9pm, with maximum exposure taking place at 7 pm
191 (exposure risk: 1.02, 95%CI: 0.86-1.16, relative to 6 pm).

192



193

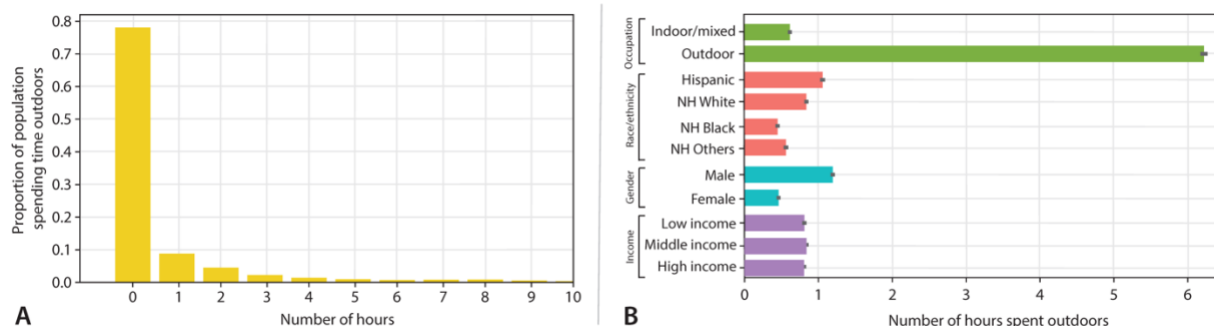
194 **Figure 2. Human exposure to mosquito vector species by hour of the day.** **A** Human risk of
 195 exposure to bites of *Ae. aegypti* by hour of the day relative to 6pm. **B** Same as A but for *Cx.*
 196 *quinquefasciatus*.

197

198 **Human population heterogeneities in the amount of time spent outdoors**

199 The amount of outdoor activity of the US population is highly heterogeneous, with 75% of
 200 the population spending less than 1 hour per day outdoors, while 22% spending at least
 201 one hour and 2% spending more than 8 hours (Fig. 3A). This high heterogeneity is
 202 associated with socio-economic characteristics of the population (Fig. 3B). Occupation
 203 type was the largest source of heterogeneity, where primarily outdoors workers such as
 204 people employed in the landscaping and construction sectors spent a substantially larger
 205 amount of time outdoors as compared to other occupation types: 6.23 hours per day
 206 (95%CI: 5.97-6.44) vs. 0.62 hours per day (95%CI: 0.61-0.63). By dividing the US
 207 population in different racial/ethnic groups, we found that Hispanics/Latinos spent the
 208 highest amount of time outdoors (1.07 hours per day, 95%CI: 0.98-1.15), followed by Non-
 209 Hispanic (NH) Whites (0.85 hours per day, 95%CI: 0.83-0.87), NH others (0.57 hours per
 210 day, 95%CI: 0.50-0.63), and NH Blacks (0.46 hours per day, 95%CI: 0.42-0.50). When
 211 considering gender, we estimated that males spent more time outdoors (1.20 hours per
 212 day, 95%CI: 1.16-1.24) than females (0.47 hours per day, 95%CI: 0.45-0.48), possibly
 213 associated with difference in occupation. Finally, we did not find substantial differences
 214 when dividing the population by income level.

215



216 **Figure 3. Heterogeneity in the amount of time spent outdoors by the US population.** **A**
 217 Distribution of the amount of time spent outdoors per day by the US population. **B** Mean number
 218 of hours spent outdoors per day for different population groups. Outdoor occupations include:
 219 Farming, fishing, forestry, construction and extraction occupations. Respondents whose family
 220 income was under the 33% quantile of their state were classified as low income, while those over
 221 the 67% quantile were classified as high income, and all others were classified as middle income.
 222

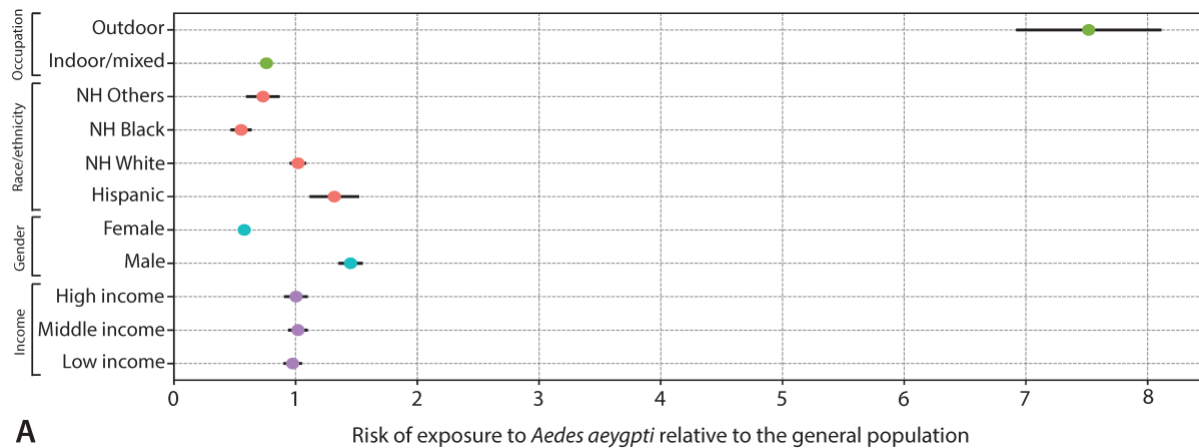
223

224 **Human population heterogeneities in the risk of exposure to mosquito vectors**

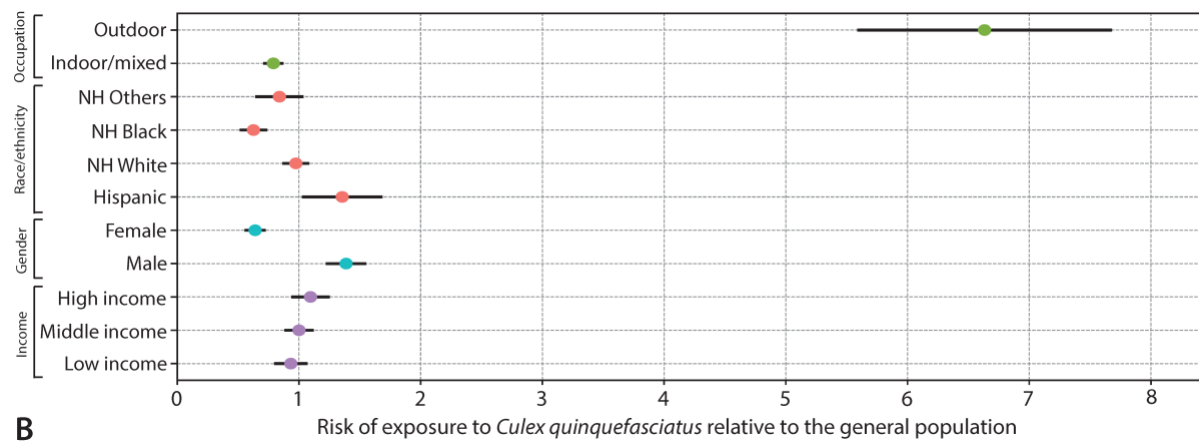
225 The highest levels of exposure to mosquito vector species were found to be associated
 226 with the type of occupation. Workers with primarily outdoor occupations yielded the
 227 highest levels of exposure being 7.50 times (95%CI: 7.18-7.84) more exposed to *Ae.*
 228 *aegypti* and 6.63 times (95%CI: 6.09-7.35) more exposed to *Cx. quinquefasciatus* in

229 comparison to the general population. Occupations that are primarily indoors have a
 230 substantially lower risk of exposure to both mosquito species (Fig. 4). The level of human
 231 exposure to mosquito vectors varied greatly by race/ethnicity. Hispanics had the highest
 232 exposure to mosquitoes being 1.32 times (95%CI: 1.22-1.44) more exposed to *Ae.*
 233 *aegypti* and 1.36 times (95%CI: 1.17-1.56) more exposed to *Cx. quinquefasciatus* in
 234 comparison to the general population. NH Black bore the lowest exposure to mosquitoes
 235 to both mosquito species as compared to the general population: 0.55 (95%CI: 0.50-0.61)
 236 for *Ae. aegypti* and 0.63 (95%CI: 0.56-0.71) for *Cx. quinquefasciatus* (Fig. 4). Males are
 237 estimated to be 1.45 (95%CI: 1.40-1.50) times more exposed to *Ae. aegypti* and 1.39
 238 times (95%CI: 1.30-1.48) more exposed to *Cx. quinquefasciatus* in comparison to the
 239 general population, whereas we found a reduced exposure for females (0.58, 95%CI:
 240 0.56-0.60 for *Ae. aegypti* and 0.64, 95%CI 0.60-0.69 for *Cx. quinquefasciatus*) (Fig 4).
 241 Finally, no significant difference in the risk of exposure to both analyzed mosquito vectors
 242 species was found between income level groups (Fig. 4). While the risk of exposure to
 243 the two analyzed vector species is highly heterogenous with the US population, the time
 244 of the day at which different population groups have higher exposure to mosquito vectors
 245 is consistent between human population group (see Supplementary Material, Figs. S1
 246 and S2).

247



A



B

248

249 **Figure 4. Human population heterogeneities in the risk of exposure to mosquito vectors.**
250 **A** Risk of exposure to *Ae. aegypti* by human population group relative to the general population.
251 **B** As A but for *Cx. quinquefasciatus*.

252

253

254 **Discussion**

255 Our results show substantial heterogeneity in the diel activity patterns of both mosquitoes
256 and humans, encompassing periods of low activity as well as peaks of heightened activity.
257 Furthermore, mosquito and human diel activity peaks overlap at specific hours during the
258 day shedding light on when the risk of being exposed to mosquito vector species is higher.
259 The heterogeneity in the amount of time spent outdoors by different human population
260 groups is associated with substantial disparities in the exposure to mosquito vector
261 species across different demographic groups. We found that workers with primarily
262 outdoor occupations, Hispanics/Latinos, and males have higher levels of exposure to
263 mosquito vector species. This nuanced understanding underscores the complexity of
264 human exposure to mosquitoes and the risk of mosquito-borne infection.

265 Mitigating outbreaks of mosquito-borne diseases is resource-intensive and entails social
266 and environmental costs [22,23]. Thus, determining the influence of diel activity patterns
267 on the risk of mosquito-borne infection and the effectiveness of public health interventions
268 are essential to plan resource allocation to maximize the effectiveness of outbreak
269 preparedness and response and minimize their side effects [24]. For example,
270 implementing adulticide spraying interventions aimed at controlling *Ae. aegypti*
271 populations during peak activity periods can yield entomological outcomes that are
272 fivefold more effective compared to conducting the same intervention during periods of
273 low activity [13]. This highlights that mosquito diel activity patterns have a strong impact
274 on the entomological outcome of adulticide spraying. Additionally, the likelihood and
275 magnitude of outbreak occurrences were shown to substantially diminish by when
276 interventions align with peak mosquito activity periods [25]. The findings presented in this
277 study can further our understanding of the effectiveness of alternative public health
278 interventions including educational campaigns on the hours of the day with highest
279 exposure to mosquito vector species. Moreover, our findings can be instrumental to
280 identify the audience of educational campaigns to maximize their effectiveness.

281 In this study, we analyzed the daily activity of mosquitoes from May to September when
282 humans are most active outdoors in the US, at the national level, exposed to mosquito
283 bites. This allowed us to gain insights into their behavioral patterns during periods of peak
284 activity [9,11]. We acknowledge that different areas may have distinct climate and
285 environmental cues that can affect human and mosquito diel activity patterns differently.
286 Moreover, mosquito and human diel activity patterns often fluctuate throughout the year
287 following shifts in sunrise and sunset times. Future studies should focus on furthering our
288 understanding of how behavioral traits change through the year and by geographical
289 areas. Another limitation of our study is outdoor activities were inferred from time use
290 data, which was not purposely designed for this objective. For this reason, some of the
291 activities were classified as taking place in a mixed or unknown environment. Future

292 studies should address this limitation and extensive sensitivity analyses showing the
293 impact of different time-use classification are warranted.

294 In conclusion, this study serves as a steppingstone to quantify the risk of exposure to
295 mosquito-borne pathogens and their transmission dynamics. Ultimately, this framework
296 based on the analysis of the overlap between human and mosquito activities has the
297 potential to inform the development of targeted public health interventions, ultimately
298 improving health and health equity.

299

300

301 **Declarations**

302 **Ethical Approval**

303 The Institutional Review Board at Indiana University has considered this research to be
304 exempt from review (IRB #23194).

305 **Competing interests**

306 The authors declare no competing interests.

307 **References**

- 308 1. World Health Organization. Vector-borne diseases. 2020. Available at:
309 <https://www.who.int/news-room/fact-sheets/detail/dengue-and-severe-dengue>
- 310 2. World Health Organization. World Malaria Report 2022. World Health
311 Organization, 2022. Available at: [https://www.who.int/teams/global-malaria-](https://www.who.int/teams/global-malaria-programme/reports/world-malaria-report-2022)
312 [programme/reports/world-malaria-report-2022](https://www.who.int/teams/global-malaria-programme/reports/world-malaria-report-2022)
- 313 3. Pan American Health Organization. Dengue. 2024. Available:
314 <https://www.paho.org/data/index.php/en/mnu-topics/indicadores-dengue->
315 [en/dengue-nacional-en/252-dengue-pais-ano-en.html](https://www.paho.org/data/index.php/en/mnu-topics/indicadores-dengue-en/dengue-nacional-en/252-dengue-pais-ano-en.html)
- 316 4. Bhatt S, Gething PW, Brady OJ, Messina JP, Farlow AW, Moyes CL, Drake JM,
317 Brownstein JS, Hoen AG, Sankoh O, Myers MF, George DB, Jaenisch T, Wint GR,
318 Simmons CP, Scott TW, Farrar JJ, Hay SI. The global distribution and burden of
319 dengue. *Nature*. 2013 Apr 25;496(7446):504-7. doi: 10.1038/nature12060. Epub
320 2013 Apr 7. PMID: 23563266; PMCID: PMC3651993.
- 321 5. Likos A, Griffin I, Bingham AM, Stanek D, Fischer M, White S, Hamilton J,
322 Eisenstein L, Atrubin D, Mulay P, Scott B, Jenkins P, Fernandez D, Rico E, Gillis L,
323 Jean R, Cone M, Blackmore C, McAllister J, Vasquez C, Rivera L, Philip C. Local
324 Mosquito-Borne Transmission of Zika Virus - Miami-Dade and Broward Counties,
325 Florida, June-August 2016. *MMWR Morb Mortal Wkly Rep*. 2016 Sep
326 30;65(38):1032-8. doi: 10.15585/mmwr.mm6538e1. PMID: 27684886.
- 327 6. Grubaugh ND, Ladner JT, Kraemer MUG, Dudas G, Tan AL, Gangavarapu K, Wiley
328 MR, White S, Thézé J, Magnani DM, Prieto K, Reyes D, Bingham AM, Paul LM,
329 Robles-Sikisaka R, Oliveira G, Pronty D, Barcellona CM, Metsky HC, Baniecki ML,
330 Barnes KG, Chak B, Freije CA, Gladden-Young A, Gnirke A, Luo C, MacInnis B,
331 Matranga CB, Park DJ, Qu J, Schaffner SF, Tomkins-Tinch C, West KL, Winnicki
332 SM, Wohl S, Yozwiak NL, Quick J, Fauver JR, Khan K, Brent SE, Reiner RC Jr,
333 Lichtenberger PN, Ricciardi MJ, Bailey VK, Watkins DI, Cone MR, Kopp EW 4th,
334 Hogan KN, Cannons AC, Jean R, Monaghan AJ, Garry RF, Loman NJ, Faria NR,
335 Porcelli MC, Vasquez C, Nagle ER, Cummings DAT, Stanek D, Rambaut A,
336 Sanchez-Lockhart M, Sabeti PC, Gillis LD, Michael SF, Bedford T, Pybus OG, Isern
337 S, Palacios G, Andersen KG. Genomic epidemiology reveals multiple introductions
338 of Zika virus into the United States. *Nature*. 2017 Jun 15;546(7658):401-405. doi:
339 10.1038/nature22400. Epub 2017 May 24. PMID: 28538723; PMCID:
340 PMC5536180.
- 341 7. World Health Organization. Malaria Report 2023. Available at:
342 <https://www.who.int/teams/global-malaria-programme/reports/world-malaria->
343 [report-2023](https://www.who.int/teams/global-malaria-programme/reports/world-malaria-report-2023).
- 344 8. Pan American Health Organization. Zika cases and congenital syndrome
345 associated with Zika virus reported by countries and territories in the Americas
346 (Cumulative Cases), 2015–2017. Pan American Health Organization/World Health
347 Organization, Washington, D.C. April 6, 2017. 2017; 2018. Available at:
348 http://www2.paho.org/hq/index.php?option=com_docman&task=doc_view&Itemid
349 [=270&gid=39029&lang=en](http://www2.paho.org/hq/index.php?option=com_docman&task=doc_view&Itemid=270&gid=39029&lang=en)

- 350 9. Centers for Disease Control and Prevention. Dengue in the US States and
351 Territories. Available at: <https://www.cdc.gov/dengue/areaswithrisk/in-the-us.html>.
- 352 10. Blackburn D, Drennon M, Broussard K, Morrison AM, Stanek D, Sarney E, Ferracci
353 C, Huard S, Brennan W, Eaton J, Nealeigh S, Barber N, Zimler RA, Adams JN,
354 Blackmore C, Gordillo M, Mercado R, Vore H, Scanlan K, Motie I, Stanfield L,
355 Farooq A, Widel K, Tomson K, Kerr N, Nasir J, Cone M, Rice C, Larkin T,
356 Hernandez E, Bencie J, Lesser CR, Dersch M, Ramirez-Lachmann S, Clark M,
357 Rollo S, Bashadi A, Tyler R, Bolling B, Moore B, Sullivan B, Fonken E, Castillo R,
358 Gonzalez Y, Olivares G, Mace KE, Sayre D, Lenhart A, Sutcliffe A, Dotson E,
359 Corredor C, Rogers E, Raphael BH, Sapp SGH, Qvarnstrom Y, Ridpath AD,
360 McElroy PD. Outbreak of Locally Acquired Mosquito-Transmitted (Autochthonous)
361 Malaria - Florida and Texas, May-July 2023. *MMWR Morb Mortal Wkly Rep.* 2023
362 Sep 8;72(36):973-978. doi: 10.15585/mmwr.mm7236a1. PMID: 37676839;
363 PMCID: PMC10495185.
- 364 11. Centers for Disease Control and Prevention CDC. West Nile virus disease cases
365 reported to CDC by state of residence. Available at:
366 [https://www.cdc.gov/westnile/resources/pdfs/data/West-Nile-virus-disease-cases-](https://www.cdc.gov/westnile/resources/pdfs/data/West-Nile-virus-disease-cases-by-state_1999-2020-P.pdf)
367 [by-state_1999-2020-P.pdf](https://www.cdc.gov/westnile/resources/pdfs/data/West-Nile-virus-disease-cases-by-state_1999-2020-P.pdf)
- 368 12. Centers for Disease Control and Prevention. About Dengue. Available at:
369 <https://www.cdc.gov/dengue/about/index.html>.
- 370 13. Wilke ABB, Mhlanga A, Kummer AG, Vasquez C, Moreno M, Petrie WD, Rodriguez
371 A, Vitek C, Hamer GL, Mutebi JP, Ajelli M. Diel activity patterns of vector mosquito
372 species in the urban environment: Implications for vector control strategies. *PLoS*
373 *Negl Trop Dis.* 2023 Jan 26;17(1):e0011074. doi: 10.1371/journal.pntd.0011074.
374 PMID: 36701264; PMCID: PMC9879453.
- 375 14. Mutebi JP, Wilke ABB, Ostrum E, Vasquez C, Cardenas G, Carvajal A, Moreno M,
376 Petrie WD, Rodriguez A, Presas H, Rodriguez J, Barnes F, Hamer GL, Juarez JG,
377 Carbajal E, Vitek CJ, Estrada X, Rios T, Marshall J, Beier JC. Diel activity patterns
378 of two distinct populations of *Aedes aegypti* in Miami, FL and Brownsville, TX. *Sci*
379 *Rep.* 2022 Mar 29;12(1):5315. doi: 10.1038/s41598-022-06586-w. PMID:
380 35351905; PMCID: PMC8964714.
- 381 15. Smith M, Dixon D, Bibbs C, Autry D, Xue RD. Diel patterns of *Aedes aegypti*
382 (Diptera: Culicidae) after resurgence in St. Augustine, Florida as collected by a
383 mechanical rotator trap. *J Vector Ecol.* 2018 Jun;43(1):201-204. doi:
384 10.1111/jvec.12302. PMID: 29757509.
- 385 16. Montgomery RR, Murray KO. Risk factors for West Nile virus infection and disease
386 in populations and individuals. *Expert Rev Anti Infect Ther.* 2015 Mar;13(3):317-
387 25. doi: 10.1586/14787210.2015.1007043. Epub 2015 Jan 30. PMID: 25637260;
388 PMCID: PMC4939899.
- 389 17. Delisle Nyström C, Barnes JD, Blanchette S, Faulkner G, Leduc G, Riazi NA,
390 Tremblay MS, Trudeau F, Larouche R. Relationships between area-level
391 socioeconomic status and urbanization with active transportation, independent
392 mobility, outdoor time, and physical activity among Canadian children. *BMC Public*

- 393 Health. 2019 Aug 9;19(1):1082. doi: 10.1186/s12889-019-7420-y. PMID:
394 31399049; PMCID: PMC6688238.
- 395 18. Gao F, Guo Q, Wang B, Cao S, Qin N, Zhao L, Jia C, Duan X. Distributions and
396 determinants of time spent outdoors among school-age children in China. *J Expo*
397 *Sci Environ Epidemiol.* 2022 Mar;32(2):223-231. doi: 10.1038/s41370-021-00401-
398 w. Epub 2022 Jan 4. PMID: 34980893.
- 399 19. Darsie, Jr. RF, Morris CD. Keys to the Adult Females and Fourth Instar Larvae of
400 the Mosquitoes of Florida (Diptera, Culicidae). 1st ed. Technical Bulletin of the
401 Florida Mosquito Control Association. Bulletin of the Florida Mosquito Control
402 Association; 2000.
- 403 20. United States Bureau of Labor Statistics. American Time Use Survey. Available at:
404 <https://www.bls.gov/tus/>.
- 405 21. Hoehne CG, Hondula DM, Chester MV, Eisenman DP, Middel A, Fraser AM,
406 Watkins L, Gerster K. Heat exposure during outdoor activities in the US varies
407 significantly by city, demography, and activity. *Health Place.* 2018 Nov;54:1-10. doi:
408 10.1016/j.healthplace.2018.08.014. Epub 2018 Sep 7. PMID: 30199773.
- 409 22. Lizzi KM, Qualls WA, Brown SC, Beier JC. Expanding Integrated Vector
410 Management to promote healthy environments. *Trends Parasitol.* 2014
411 Aug;30(8):394-400. doi: 10.1016/j.pt.2014.06.001. Epub 2014 Jul 12. PMID:
412 25028090; PMCID: PMC4112142.
- 413 23. Wilke ABB, Benelli G, Beier JC. Anthropogenic changes and associated impacts
414 on vector-borne diseases. *Trends Parasitol.* 2021 Dec;37(12):1027-1030. doi:
415 10.1016/j.pt.2021.09.013. Epub 2021 Oct 19. PMID: 34686421.
- 416 24. World Health Organization. Handbook for integrated vector management.
417 *Outlooks on Pest Management.* 2013;24: 142–143. doi:10.1564/v24_jun_14
- 418 25. Kummer AG, Wilke AB, Ventura PC, Vasquez C, Medina J, Unlu I, Gonzalez Y,
419 Mhlanga A, Benelli G, Ejima K, Mutebi JP, Ajelli M. Comparing the effectiveness of
420 adulticide application interventions on mitigating local transmission of dengue
421 virus. *J Pest Sci.* 2024. doi:10.1007/s10340-024-01787-w
- 422