

Harmonizing AIM estimates of PWLHIV

1 **Guidance for triangulating data and estimates of HIV prevalence among pregnant women and** 2 **coverage of PMTCT using the Spectrum AIDS Impact Module**

3 *Running head:* Harmonizing AIM estimates of PWLHIV

4 Magdalene K. Walters^{1§}, Eline L. Korenromp², Anna Yakusik², Ian Wanyeki², André Kaboré³,
5 Arthur Poimouribou⁴, Célestine Ki⁴, Coumbo Dao⁵, Paul Bambara⁴, Salam Derme⁴,
6 Théophile Ouedraogo⁴, Kai Hon Tang¹, Marie-Claude Boily¹, Mary Mahy², Jeffrey W. Imai-
7 Eaton^{1,7}

8 ¹ MRC Centre for Global Infectious Disease Analysis, School of Public Health, Imperial
9 College London, London, United Kingdom

10 ² Data for Impact Department, Joint United Nations Programme on HIV/AIDS, Geneva,
11 Switzerland

12 ³ Data for Impact Division, Joint United Nations Programme on HIV/AIDS, Ouagadougou,
13 Burkina Faso

14 ⁴ Permanent Secretary of the National Council for the Fight against AIDS and Communicable
15 Infections, Burkina Faso

16 ⁵ Direction de la Santé de la Famille (DSF), Ouagadougou, Burkina Faso

17 ⁷ Center for Communicable Disease Dynamics, Department of Epidemiology, Harvard T.H.
18 Chan School of Public Health, Boston, MA, USA

19 **Correspondence to:** Magdalene Walters, Imperial College London, St. Mary's Hospital Campus,
20 Norfolk Place, London W2 1P, UK (email: mwalters@ic.ac.uk)

21 **Conflicts of Interest and Source of Funding:** The authors declare no conflicts of interest. This
22 research was supported by the National Institute of Allergy and Infectious Diseases of the National
23 Institutes of Health under award number 1R01AI152721-01A1, UNAIDS, and the MRC Centre for
24 Global Infectious Disease Analysis (reference MR/R015600/1), jointly funded by the UK Medical
25 Research Council (MRC) and the UK Foreign, Commonwealth & Development Office (FCDO), under
26 the MRC/FCDO Concordat agreement and is also part of the EDCTP2 programme supported by the
27 European Union.

28 A preliminary analysis of this work was virtually presented in October 2022 to the UNAIDS Reference
29 Group on HIV Estimates, Modelling, and Projections. For open access, the author has applied a
30 Creative Commons Attribution (CC BY) license to any Author Accepted Manuscript version arising.

31 **Main text word count:** 3571 (excluding headings)

Harmonizing AIM estimates of PWLHIV

32 **Abstract**

33 **Background:** Most countries use the Spectrum AIDS Impact Module (Spectrum-AIM),
34 antenatal care routine HIV testing, and antiretroviral treatment data to estimate HIV
35 prevalence among pregnant women. Non-representative programme data may lead to
36 inaccurate estimates HIV prevalence and treatment coverage for pregnant women.

37 **Setting:** 154 locations in 126 countries.

38 **Methods:** Using 2023 UNAIDS HIV estimates, we calculated three ratios: (1) HIV
39 prevalence among pregnant women to all women 15-49y (prevalence), (2) ART coverage
40 before pregnancy to women 15-49y ART coverage (ART pre-pregnancy), and (3) ART
41 coverage at delivery to women 15-49y ART coverage (PMTCT coverage). We developed an
42 algorithm to identify and adjust inconsistent results within regional ranges in Spectrum-AIM,
43 illustrated using Burkina Faso's estimates.

44 **Results:** In 2022, the mean regional ratio of prevalence among pregnant women to all
45 women ranged from 0.68 to 0.95. ART coverage pre-pregnancy ranged by region from 0.40
46 to 1.22 times ART coverage among all women. Mean regional PMTCT coverage ratios
47 ranged from 0.85 to 1.51. The prevalence ratio in Burkina Faso was 1.59, above the typical
48 range 0.62-1.04 in western and central Africa. Antenatal clinics reported more PMTCT
49 recipients than estimated HIV-positive pregnant women from 2015 to 2019. We adjusted
50 inputted PMTCT programme data to enable consistency of HIV prevalence among pregnant
51 women from programmatic routine HIV testing at antenatal clinics with values typical for
52 Western and central Africa.

53 **Conclusion:** These ratios offer Spectrum-AIM users a tool to gauge the consistency of their
54 HIV prevalence and treatment coverage estimates among pregnant women with other
55 countries in the region.

56 **Keywords:** HIV; AIDS impact module; pregnant women; ART; PMTCT

57 **Abstract word count:** 248

58

Harmonizing AIM estimates of PWLHIV

59 **Introduction**

60 Estimates of HIV prevalence among pregnant women determine need for and coverage of
61 antiretrovirals for prevention of maternal to child transmission (PMTCT), a key input to
62 estimating paediatric HIV infections and monitoring progress towards eliminating mother-to-
63 child HIV transmission.¹⁻⁴ Most countries estimate the number of pregnant women living with
64 HIV (PWLHIV) and PMTCT coverage using the AIDS Impact Module in Spectrum
65 (Spectrum-AIM). Comparing related model outcomes and typical patterns across locations
66 can reveal inconsistencies in input data or model assumptions that may result in inaccurate
67 estimates.

68 Country-specific estimates of HIV prevalence among pregnant women are the result of a
69 multi-step modelling process in Spectrum-AIM. The number of PWLHIV is calculated by
70 multiplying the age-specific number of women living with HIV (WLHIV) in reproductive ages
71 (15 to 49 years [15-49y]), age-specific fertility rates (by 5-year age group), and the relative
72 fertility of WLHIV relative to women without HIV (fertility rate ratio [FRR]). Age-specific HIV
73 prevalence is derived by fitting a mathematical model to local HIV surveillance data,⁵⁻⁷
74 including HIV prevalence from household surveys, prevalence among pregnant women
75 attending antenatal clinics (ANC), prevalence surveys among key populations, new HIV
76 diagnoses, or AIDS-related deaths. Age-specific fertility rates are obtained from the United
77 Nations World Population Prospects.⁸ Relative fertility of WLHIV compared to women
78 without HIV by age, treatment-status, and local effects are estimated from national
79 household surveys in African countries that measure HIV status and collect birth histories.^{8,9}
80 Inconsistencies in population prevalence, fertility rates, or relative fertility among WLHIV may
81 yield inaccurate estimates of HIV prevalence and treatment coverage among pregnant
82 women within Spectrum-AIM.

83 Quality of information about HIV among pregnant women varies by region and epidemic
84 type. In most African countries with high HIV prevalence, ANC attendance and routine HIV
85 testing at ANC (ANC-RT) is nearly universal. Universal HIV testing at ANC provides direct
86 measures of HIV prevalence among pregnant women. Spectrum-AIM calculates a 'local
87 adjustment factor' (LAF) to calibrate the modelled prevalence among pregnant women to
88 HIV prevalence measured from national ANC-RT. The default LAF value of 1.0 indicates that
89 the fertility of WLHIV is consistent with the default HIV FRR estimated from household
90 survey data. In the 2023 UNAIDS estimates, most sub-Saharan African (SSA) locations
91 (n=36/43) calibrated the LAF to ANC-RT data.^{10,11}

92 In countries with low HIV prevalence and transmission primarily among key populations and
93 their partners, mostly outside SSA, ANC HIV testing coverage varies and is often prioritised

Harmonizing AIM estimates of PWLHIV

94 among higher risk women or higher burden locations. Consequently, HIV prevalence from
95 ANC-RT in these locations does not represent prevalence among all pregnant women and
96 cannot be used to calibrate the LAF.¹²⁻¹⁸ Data are limited about WLHIV's fertility relative to
97 women without HIV in these settings, and fertility may be more heterogeneous given the
98 greater concentration of HIV among populations such as sex workers, partners of men who
99 have sex with men, and people who inject drugs. Because the default FRRs were derived
100 from household surveys in SSA countries, they may mis-specify fertility of WLHIV in other
101 regions. Lacking representative measures of HIV prevalence among pregnant women, some
102 Spectrum-AIM users manually adjust the LAF so that modelled estimates of PWLHIV are
103 greater than numbers of PWLHIV receiving ARVs from programme data. In non-SSA
104 regions, more than half of all countries with results published by UNAIDS in 2023 (n=52/83)
105 manually changed the LAF.^{10,11}

106 Large adjustments to the default fertility patterns or uncharacteristically large differences
107 between related model outputs could indicate inaccurate model estimates, inaccurate input
108 data, or inappropriate interpretations of data sources. To identify possible challenges, we
109 used UNAIDS estimates from Spectrum-AIM published in 2023 to establish patterns for HIV
110 prevalence and treatment coverage among pregnant women for each region. We also
111 proposed an algorithm to guide Spectrum-AIM users to critically review the consistency of
112 programmatic estimates with regional patterns and scrutinize surveillance data,
113 programmatic input, and model assumptions.^{10,11} As a case study, we applied the approach
114 and described its impact on estimates of HIV prevalence among pregnant women using
115 Spectrum-AIM estimates for Burkina Faso.

116 **Methods**

117 We used Spectrum-AIM files submitted by HIV estimation teams to UNAIDS for publication
118 in 2023 to calculate three ratios: (1) HIV prevalence among pregnant women to HIV
119 prevalence among all women 15-49y ('prevalence ratio'), (2) ART coverage among PWLHIV
120 before the current pregnancy to ART coverage among WLHIV 15-49y ('ART coverage pre-
121 pregnancy ratio'), and (3) the ratio of ART coverage in PWLHIV at delivery to ART coverage
122 in WLHIV 15-49y ('PMTCT coverage ratio'). We reported these ratios for the year 2022, as
123 they did not vary substantially over the past decade. We summarised ranges for each ratio
124 by UNAIDS region. Values outside of these ranges may indicate inconsistent data for the
125 number of pregnant women on ART, number of PWLHIV, or low predictive power of the local
126 HIV surveillance data to estimate HIV prevalence in the general population.

Harmonizing AIM estimates of PWLHIV

127 *Data sources*

128 We extracted outputs from 154 publicly available national or subnational publicly available
129 Spectrum-AIM HIV estimates files submitted by 126 countries and published by UNAIDS in
130 2023.¹¹ Three SSA countries had subnational files (Kenya, Zimbabwe, Ethiopia); the
131 remaining 123 files represented national HIV epidemics created by country teams and
132 submitted to UNAIDS for review and publication. Spectrum-AIM methods are described
133 elsewhere.¹⁹⁻²¹ Briefly, in countries with high HIV prevalence (n= 64, mostly in SSA,
134 including Burkina Faso), adult HIV prevalence and incidence trends were estimated from
135 data on HIV prevalence among (1) nationally-representative samples of adults from
136 household-based surveys and (2) pregnant women attending ANC, sampled in periodic
137 sentinel surveillance up to the mid-2010s and more recently from ANC-RT data.⁵ In
138 countries with lower HIV prevalence, epidemic trends were fit to national HIV and/or AIDS
139 case reports and AIDS-related deaths reported through vital registration with the CSAVR or
140 ECDC models (n= 46) or from HIV prevalence survey and surveillance data among risk
141 groups using the EPP concentrated (n= 27) or AEM models (n= 12).^{6,7} All incidence models
142 accounted for the effects of ART on survival and transmission. Locations and the estimation
143 method for each are reported in Supplementary Table S1.

144 Spectrum-AIM calculates HIV prevalence among pregnant women from age-specific HIV
145 prevalence of all women 15-49y, age-specific fertility rates,⁸ and HIV fertility rate ratios.⁹
146 Data on HIV FRRs outside SSA are limited and therefore default HIV FRR patterns for SSA
147 are applied to all regions, despite very different risk populations and contraceptive use. We
148 extracted Spectrum-AIM's estimates for HIV prevalence among women 15-49y, HIV
149 prevalence among pregnant women, ART coverage among WLHIV 15-49y, and initiation
150 timing for PWLHIV on ART for 2022. We compared HIV prevalence among pregnant women
151 and women 15-49y to nationally representative surveys where available (Supplementary
152 Table S2 and Supplementary Figure S1).

153 *HIV prevalence, ART, and PMTCT ratios*

154 We calculated the 'prevalence ratio' for all Spectrum-AIM files by dividing the HIV prevalence
155 among pregnant women by the HIV prevalence among women 15-49y (equation 1):

$$Prevalence\ ratio = \frac{HIV\ prevalence\ among\ pregnant\ women}{HIV\ prevalence\ among\ women\ aged\ 15 - 49\ years\ old}$$

156

Equation 1

157 The 'ART coverage pre-pregnancy ratio' was calculated as the proportion of PWLHIV on
158 ART before the current pregnancy from programmatic input and Spectrum-AIM's estimate of
159 PWLHIV, divided by ART coverage among WLHIV 15-49y (equation 2):

Harmonizing AIM estimates of PWLHIV

$$\text{ART coverage pre – pregnancy ratio} = \frac{\text{ART coverage before pregnancy among all PWLHIV}}{\text{ART coverage for all WLHIV aged 15 – 49 years}}$$

160

Equation 2

161 The ‘PMTCT coverage ratio’ was the ratio of total ART coverage (i.e., proportion of PWLHIV
162 who received ART during the pregnancy, started before or during the current pregnancy)
163 and ART coverage for WLHIV 15-49y (equation 3):²⁴

$$\text{PMTCT coverage ratio} = \frac{\text{ART coverage at delivery amongst all PWLHIV}}{\text{ART coverage for all WLHIV aged 15 – 49 years}}$$

164

Equation 3

Identifying typical ranges and outliers by region

166 We calculated the mean of each ratio by UNAIDS-defined regions, broadly representing
167 variations in epidemic type: eastern and southern Africa (ESA), western and central Africa
168 (WCA), Latin America and Caribbean (LAC), Asia and Pacific (AP), eastern Europe and
169 central Asia (EECA), western and central Europe and North America (WCENA), middle East
170 and northern Africa (MENA). For ESA and WCA, we considered location-specific ratios
171 between 0.75 times lower to 1.25 times higher than the regional mean as ‘typical’ and those
172 outside this range to be outliers. For other regions, we present these ranges but emphasize
173 the influence of local HIV surveillance data on estimating HIV prevalence among pregnant
174 women. Alternate methods to define typical ranges were considered (Supplementary Text
175 S1).

176 For countries where transmission primarily occurs outside of key populations, we expected
177 prevalence ratios to be less than one (i.e., lower HIV prevalence among pregnant women
178 than all women 15-49y),^{25,26} and the ART pre-pregnancy ratios (on ART before pregnancy)
179 to be less than one, because PWLHIV are on average younger and so acquired HIV more
180 recently.^{27,28} We expected PMTCT coverage ratios to be above one in countries with high
181 ANC-RT coverage and ART for PMTCT uptake, as pregnant women who were untreated
182 before pregnancy should be diagnosed and initiated on ART through ANC-RT.²⁹ Outside of
183 SSA, where HIV transmission is mostly among key populations and their partners, and
184 fertility and contracepting patterns are different from SSA, there was little *a priori* information
185 about expected typical relationships for the prevalence, ART pre-pregnancy, or PMTCT
186 ratios.

187 We further hypothesized that countries with outlier prevalence, ART coverage, or PMTCT
188 coverage ratios had atypical LAFs that were fitted or modified to reconcile discrepant data on
189 HIV prevalence among pregnant women (whether fit to ANC-RT data or estimated by

Harmonizing AIM estimates of PWLHIV

190 Spectrum-AIM) and number of PWLHIV on ART from programmes. Alternatively, if the
191 distribution of LAFs across countries within a region systematically differed from one, this
192 may indicate that the regional HIV-related FRR parameters in Spectrum-AIM are mis-
193 specified.

194 To test these hypotheses, we calculated an average LAF by region, weighted according to
195 how close location-specific prevalence, ART pre-pregnancy, and PMTCT ratio ($Ratio_L$) were
196 to the regional mean ratio ($Ratio_R$). The inverse favours values that are closest to the
197 regional mean ratio. Weighted regional LAFs were calculated separately for all ratios.

$$w_L = \frac{1}{|Ratio_L - Ratio_R|}$$

198 Equation 4

$$LAF_R = \frac{\sum_C w_L * LAF_L}{\sum_C w_L}$$

199 Equation 5

200 Lastly, we identified inconsistent ART coverage among WLHIV 15-49y and PWLHIV.
201 Inconsistent coverage estimates consisted of: (1) more women receiving ART than
202 estimated WLHIV and (2) large year-to-year differences in the number of women receiving
203 ART. The first indicated inaccurate programme data or modelled output depending on the
204 location, the second indicated possible data recording issues and programmatic changes
205 that should be verified by those familiar with local context.

Guidance for reviewing data and model outputs with Burkina Faso case study

207 From the outlier analysis, we developed a six-step algorithm to assess data and model
208 assumptions regarding HIV prevalence and ART coverage among pregnant women (Figure
209 1). We applied the algorithm using a preliminary Spectrum-AIM file produced by Burkina
210 Faso (WCA region) for the 2023 round of UNAIDS published estimates. This file represents
211 the most up-to-date surveillance and treatment data from the national HIV programme and
212 estimates.

213 This study was reviewed and approved by the Research Governance and Integrity team of
214 Imperial College London (ICREC #6300528).

Harmonizing AIM estimates of PWLHIV

215 **Results**

216 *Prevalence, ART pre-pregnancy, and PMTCT ratios*

217 In 2022, the mean prevalence ratio was less than one in all regions, ranging from 0.68 in the
218 MENA region to 0.95 in the LAC region (Table 1), indicating that pregnant women typically
219 had lower HIV prevalence than women 15-49y. The ESA and WCA regions had mean
220 prevalence ratios of 0.72 and 0.83, respectively (Table 1). WCA had a higher proportion of
221 outliers than ESA (Figure 2; ESA: 6/46; WCA: 5/25). The regional mean ART coverage pre-
222 pregnancy ratio was lowest in WCA at 0.40, and less than one for all regions, except
223 WCENA and EECA where it was 1.22 and 1.06, respectively (Table 1). Twenty-two countries
224 had ART coverage pre-pregnancy ratios above one (Figure 3). The mean ART coverage
225 pre-pregnancy ratio across all locations was 0.83 and the mean PMTCT coverage ratio was
226 1.21, and in all regions the mean PMTCT coverage ratio exceeded the ART coverage pre-
227 pregnancy ratio. For all regions except WCA (0.85), the PMTCT coverage ratio exceeded
228 one.

229 *Atypical ratios within regions*

230 All regions had countries with prevalence ratios outside of the regional typical range (Table
231 1). Globally, 19 of 154 locations (11 national locations, 8 subnational locations across
232 Ethiopia, Kenya, and Zimbabwe) reported more PWLHIV receiving ART than the estimated
233 number of PWLHIV in 2022. Of these 19 locations, two countries reported more pregnant
234 women on ART before the current pregnancy than total estimated PWLHIV. Every region
235 had countries with ART pre-pregnancy ratios outside of 0.75 – 1.25 times the mean ART
236 pre-pregnancy ratio regional range (Figure 2).

237 *Burkina Faso case study*

238 We applied the data review steps described in Figure 1 to the Burkina Faso Spectrum-AIM
239 file. Burkina Faso calibrated HIV prevalence among pregnant women to HIV prevalence from
240 ANC-RT data. Prevalence from routine ANC testing in 2022 was 1.19%; Spectrum estimated
241 HIV prevalence among all women 15-49y as 0.7% (0.6 – 0.9%). This differed from the typical
242 relationship where prevalence among pregnant women was less than HIV prevalence
243 among all women.¹⁰ Step one of the process (Figure 1) revealed that the prevalence ratio in
244 Burkina Faso (1.56) exceeded the typical range for WCA (0.62-1.04, Figure 2). Step two
245 identified Burkina Faso's LAF parameter of 2.15 was greater than the typical LAF in the
246 region (1.12, Table 1). The third step situated Burkina Faso among countries with a national
247 household survey that informed FRR parameter estimates in Spectrum-AIM, indicating that
248 the default FRR parameters should represent the relative fertility of WLHIV in Burkina Faso.

Harmonizing AIM estimates of PWLHIV

249 Because both the prevalence ratio and LAF were higher than typical for WCA, we
250 determined that the ANC-RT reported HIV prevalence was higher than expected for a
251 country in WCA.

252 The Burkina Faso ratios for ART coverage pre-pregnancy (0.47) and PMTCT coverage
253 (1.00) were both within typical ranges for WCA (0.30 - 0.50 for ART pre-pregnancy and 0.64
254 - 1.06 for PMTCT ratios in WCA, Table 1). We did not find inconsistencies in ART coverage
255 among WLHIV 15-49y in step four. The steps to detect inconsistencies in PMTCT
256 programme data inputs (five and six) indicated the number of WLHIV on PMTCT exceeded
257 the modelled number of PWLHIV in each year between 2015 and 2020 (Figure 4). The
258 discrepancy between pregnant women reported on ART at delivery and estimated number
259 PWLHIV was largest in 2019, when the reported number of PWLHIV on ART at delivery
260 treatment was 1.67 times Spectrum-AIM's estimate of PWLHIV. Between 2014 and 2015,
261 the reported number of WLHIV receiving PMTCT tripled from 4,285 to 12,937.

262 The steps outlined in Figure 1 suggested two potential adjustments to reconcile Burkina
263 Faso's estimates of HIV prevalence among pregnant women: (1) HIV prevalence among
264 pregnant women compared to all women 15-49y was higher than typical for countries in
265 WCA and (2) the number of PWLHIV receiving treatment was inconsistent with the
266 estimated PWLHIV. Both discrepancies could be explained by the inaccurately large number
267 of reported PWLHIV on ART before current pregnancy, which could occur if some PWLHIV
268 on ART were double counted. Per the guidance in steps one and two, we decreased Burkina
269 Faso's LAF from 2.15 (fit to ANC-RT data) to 1.12 (WCA regional estimate), as an initial step
270 to align Burkina Faso's prevalence ratio with regional estimates. During steps three and four,
271 we did not change the FRR or ART coverage among women 15-49y, since Burkina Faso's
272 FRR was fit to national household survey data, and we did not identify inconsistencies in
273 ART coverage among women 15-49y. Because the PMTCT ratio was within the range of
274 typical values for WCA (Table 1), we applied the reported distribution of ART initiation
275 timings annually to ART coverage among women 15-49y to produce new to the overall level
276 of PMTCT coverage (Figure 4, and Supplementary Text S2). Reducing the LAF and
277 updating the number of women receiving antiretrovirals for PMTCT resulted in a new
278 prevalence ratio of 1.07, consistent with other countries in the region.

279 **Discussion**

280 Our study assessed estimates of HIV prevalence and treatment coverage among pregnant
281 women compared to all adult women by global regions. We developed a data review
282 process for Spectrum-AIM users to assess the relationship between ANC and ART related
283 programme data inputs and assumptions about fertility among WLHIV. This algorithm relies

Harmonizing AIM estimates of PWLHIV

284 on three ratios (prevalence, ART coverage pre-pregnancy, and PMTCT coverage),
285 prompting users to interrogate discrepancies between programme and surveillance data and
286 Spectrum-AIM assumptions and to align estimates of HIV prevalence among pregnant
287 women and ART coverage at delivery with other locations in the region.

288 HIV prevalence among pregnant women in 2022 was lower than among all women 15-49y in
289 all regions, typically by 20-30%. Prevalence ratios showed less variation across countries in
290 regions with larger HIV epidemics compared to regions with transmission more concentrated
291 among key populations and their partners. The greater variation in the latter is likely due to
292 diverse epidemiological factors and variations in surveillance data reliability and estimation
293 approaches. There are three notable differences in the respective groups' Spectrum-AIM
294 models and input data: (1) most countries in SSA use the same type of data (HIV testing
295 from ANC and representative household surveys) to fit overall adult HIV prevalence,
296 whereas concentrated epidemic countries use surveillance among key populations (primarily
297 non-ANC) data, (2) for countries that do use ANC data outside of SSA, HIV testing at ANC is
298 often targeted at women at higher risk to HIV,^{30,31} and (3) default FRRs were derived from
299 household survey data from SSA and may be more applicable there.

300 In most regions, ART coverage before pregnancy was lower than ART coverage among all
301 adult WLHIV, but by varying degrees (regional means ranging 0.40 – 0.87, excluding EECA
302 and WCENA). ART coverage before pregnancy was higher in EECA (1.06) and WCENA
303 (1.22). All countries in EECA and WCENA with ART pre-pregnancy ratios greater than one
304 were estimated with the CSAVR model, which uses national HIV diagnoses and/or AIDS
305 case reports and AIDS-related deaths reported through vital registration to estimate age-
306 specific HIV prevalence (Supplementary Table S1).⁶ Assessing typical results for the
307 prevalence, ART coverage pre-pregnancy, and PMTCT ratios for countries without data that
308 directly measures HIV prevalence among pregnant women requires more nuance than for
309 countries with ANC-RT data.

310 Interpreting outlier ratios involves scrutinizing both local HIV surveillance data for total
311 population prevalence estimation and its implications for estimating HIV prevalence among
312 pregnant women.

- 313 1. Countries should assess the reliability of data used to estimate age-specific HIV
314 prevalence among adults, considering documented biases in HIV surveillance data.³²⁻
315 ³⁵ Where death registration data are used, countries should consider how frequent
316 misclassification of cause of death is.³⁵
- 317 2. If data on PMTCT provision is reliable, countries could consider manual adjustments
318 to the LAF to align the number of PWLHIV with the reported number of PWLHIV on

Harmonizing AIM estimates of PWLHIV

319 ART from programmes. More work should be done to estimate the relative fertility of
320 WLHIV in that epidemic setting rather than using the FRR estimated from SSA
321 household surveys.

322 While the proposed ratios describe relationships between surveillance data, programmatic
323 input, and model assumptions, they are intrinsically linked through the model and cannot be
324 evaluated independently. Aligning one ratio with the mean regional value may cause another
325 ratio to diverge from the regional value; balancing these ratios requires an iterative process
326 of assessing the accuracy of different input data sources and making justified adjustments.
327 While there is no gold standard source to compare these ratios to, using ratios calculated
328 from external sources (such as PHIA and/or DHS surveys) in conjunction with regional
329 ranges to identify outliers is a starting point to scrutinizing implausible model inputs.

330 The Burkina Faso case study illustrates this. Burkina Faso's prevalence ratio was higher
331 than many locations in the WCA region accompanied by a high LAF fit to national ANC-RT
332 data. The atypically high prevalence ratio suggested that Burkina Faso's ANC-RT data
333 overstated HIV prevalence among pregnant women relative to all women 15-49y. Previous
334 studies found ANC testing clinics in Burkina Faso disproportionately serve urban areas with
335 higher HIV prevalence among pregnant women than national HIV prevalence among
336 pregnant women.³⁶ The difference in clientele is corroborated by lower access to multiple
337 ANC visits before delivery in rural areas of Burkina Faso.^{36,37} Ultimately, the Burkina Faso
338 estimation team determined the programme data were not robust for use in HIV estimation
339 indicated by low concordance between prevalence values from routine programme data and
340 sentinel surveillance data.

341 We suggest Spectrum-AIM users complete this review during the annual UNAIDS-supported
342 HIV estimation process. Regions with epidemics primarily among key populations will have
343 more heterogeneous fertility among WLHIV and access to care than countries with
344 transmission among the heterosexual population.³⁹⁻⁴² In this case, adjustments based on
345 regional trends may be less appropriate and Spectrum-AIM users should prioritize insights
346 about the local epidemic context and ANC coverage data to inform the more accurate
347 estimates of HIV prevalence and ART coverage among pregnant women. Additionally,
348 countries should triangulate results with additional valid data sources, including testing of
349 HIV exposed infants with mother infant pairing.⁴³⁻⁴⁵ Future work should examine patterns
350 across epidemic types and the relationship between pregnant women and key population
351 HIV prevalence to improve internal consistency in Spectrum-AIM's estimates of HIV
352 prevalence among pregnant women. Investing in validation with external data not input to
353 the Spectrum-AIM model will produce more accurate estimates of HIV prevalence among

Harmonizing AIM estimates of PWLHIV

354 pregnant women and number of vertical HIV transmissions. Such data triangulation is well
355 illustrated by Sibanda *et al.*, who integrated data from four sources (including Spectrum-AIM
356 results) to identify gaps in the PMTCT care cascade in Zimbabwe, improving programme
357 results.⁴⁶

358 Our work provides recommendations and a standardized approach to examining and, where
359 needed, improving estimates of HIV prevalence among pregnant women within the
360 Spectrum-AIM modelling process. We provide a path forward for targeted data collection and
361 quality review for further refining these parameterizations. Future work could expand this
362 analysis to include metrics measured through other data systems, such as early infant
363 diagnosis and vital registration. Improvements in estimates of the number of pregnant
364 women with HIV will aid measuring and addressing PMTCT needs, thereby decreasing
365 instances of vertical transmission, towards the elimination of maternal to child transmission.

Harmonizing AIM estimates of PWLHIV

366 **Tables and Figures**

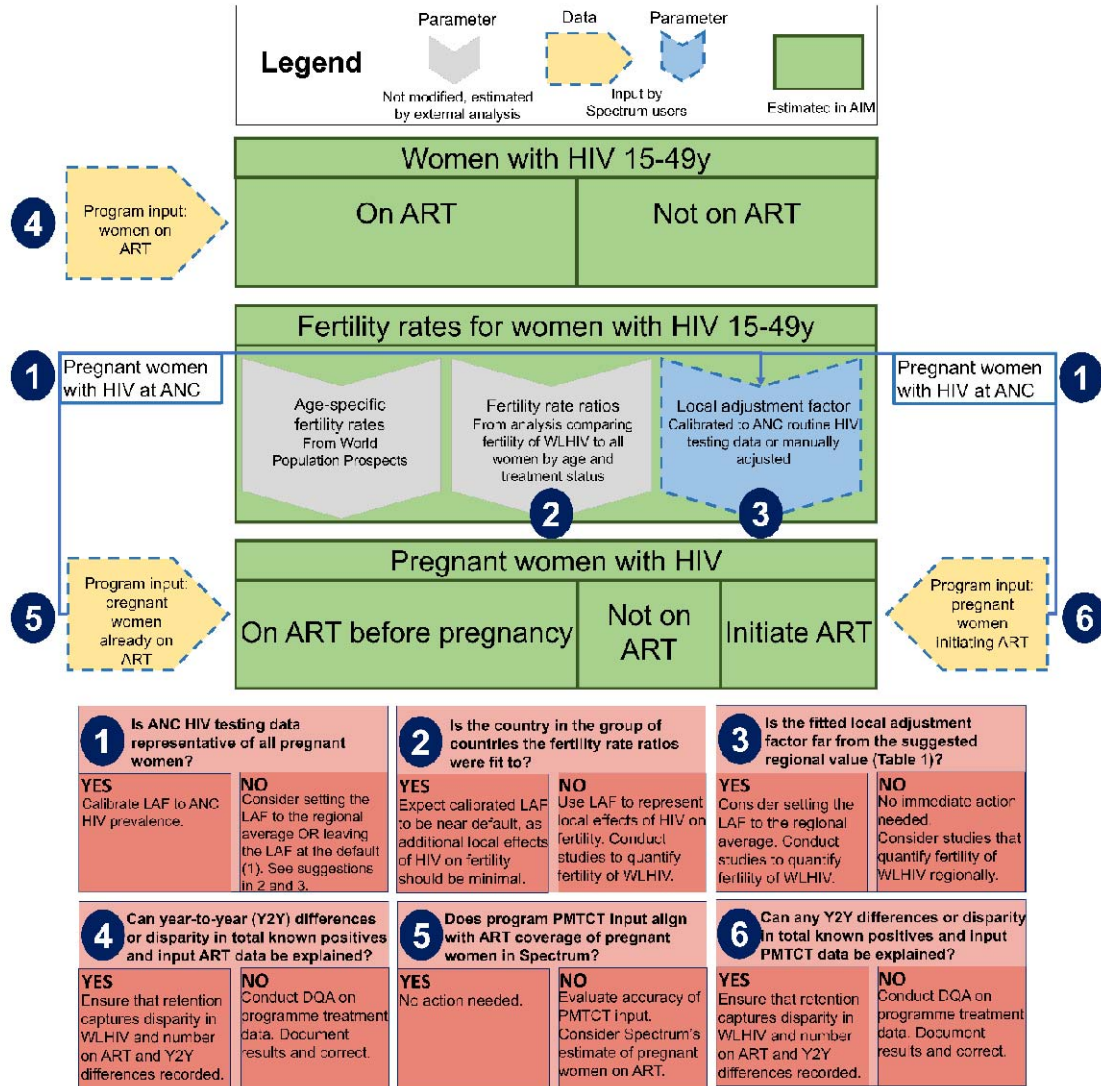
367 **Table 1.** Typical ranges of prevalence ratios (defined as HIV prevalence among pregnant
 368 women to HIV prevalence among women 15-49y), ART pre-pregnancy (defined as ART
 369 coverage among PWLHIV at first ANC to ART coverage among WLHIV 15-49y), and
 370 PMTCT (defined as ART coverage started before or during the pregnancy among PWLHIV
 371 to ART coverage among WLHIV 15-49y) ratios

Ratio	UNAIDS Region	Mean (Standard Deviation)	Typical range (0.75 - 1.25x mean)	Typical local adjustment factor ¹
Prevalence	Eastern and southern Africa	0.72 (0.20)	(0.54 - 0.90)	1.02
	Western and central Africa	0.83 (0.24)	(0.62 - 1.04)	1.12
	Latin America and Caribbean	0.95 (0.29)	(0.71 - 1.18)	1.62 ²
	Asia and Pacific	0.73 (0.41)	(0.55 - 0.92)	1.07 ²
	Eastern Europe and central Asia	0.73 (0.24)	(0.55 - 0.91)	1.28 ²
	Western and central Europe and North America	0.70 (0.17)	(0.53 - 0.88)	1.07 ²
	Middle East and northern Africa	0.68 (0.21)	(0.51 - 0.84)	1.08 ²
ART pre-pregnancy coverage	Eastern and southern Africa	0.69 (0.17)	(0.52 - 0.87)	0.99
	Western and central Africa	0.40 (0.16)	(0.30 - 0.50)	1.27
	Latin America and Caribbean	0.67 (0.32)	(0.50 - 0.84)	1.69 ²
	Asia and Pacific	0.81 (0.36)	(0.61 - 1.01)	1.21 ²
	Eastern Europe and central Asia	1.06 (0.25)	(0.79 - 1.32)	1.29 ²
	Western and central Europe and North America	1.22 (0.42)	(0.91 - 1.52)	1.08 ²
	Middle East and northern Africa	0.84 (0.45)	(0.63 - 1.05)	1.37 ²
PMTCT coverage	Eastern and southern Africa	1.04 (0.26)	(0.78 - 1.30)	1.02
	Western and central Africa	0.85 (0.32)	(0.64 - 1.06)	1.19
	Latin America and Caribbean	1.19 (0.48)	(0.89 - 1.48)	2.14 ²
	Asia and Pacific	1.08 (0.55)	(0.81 - 1.35)	1.05 ²
	Eastern Europe and central Asia	1.51 (0.40)	(1.13 - 1.89)	1.61 ²
	Western and central Europe and North America	1.47 (0.49)	(1.10 - 1.84)	1.16 ²
	Middle East and northern Africa	1.34 (0.95)	(1.00 - 1.67)	1.20 ²

372 ¹Method for calculating detailed in section S1 and Table S4 of SDC

373 ²Not calibrated to routine HIV testing done at ANC data

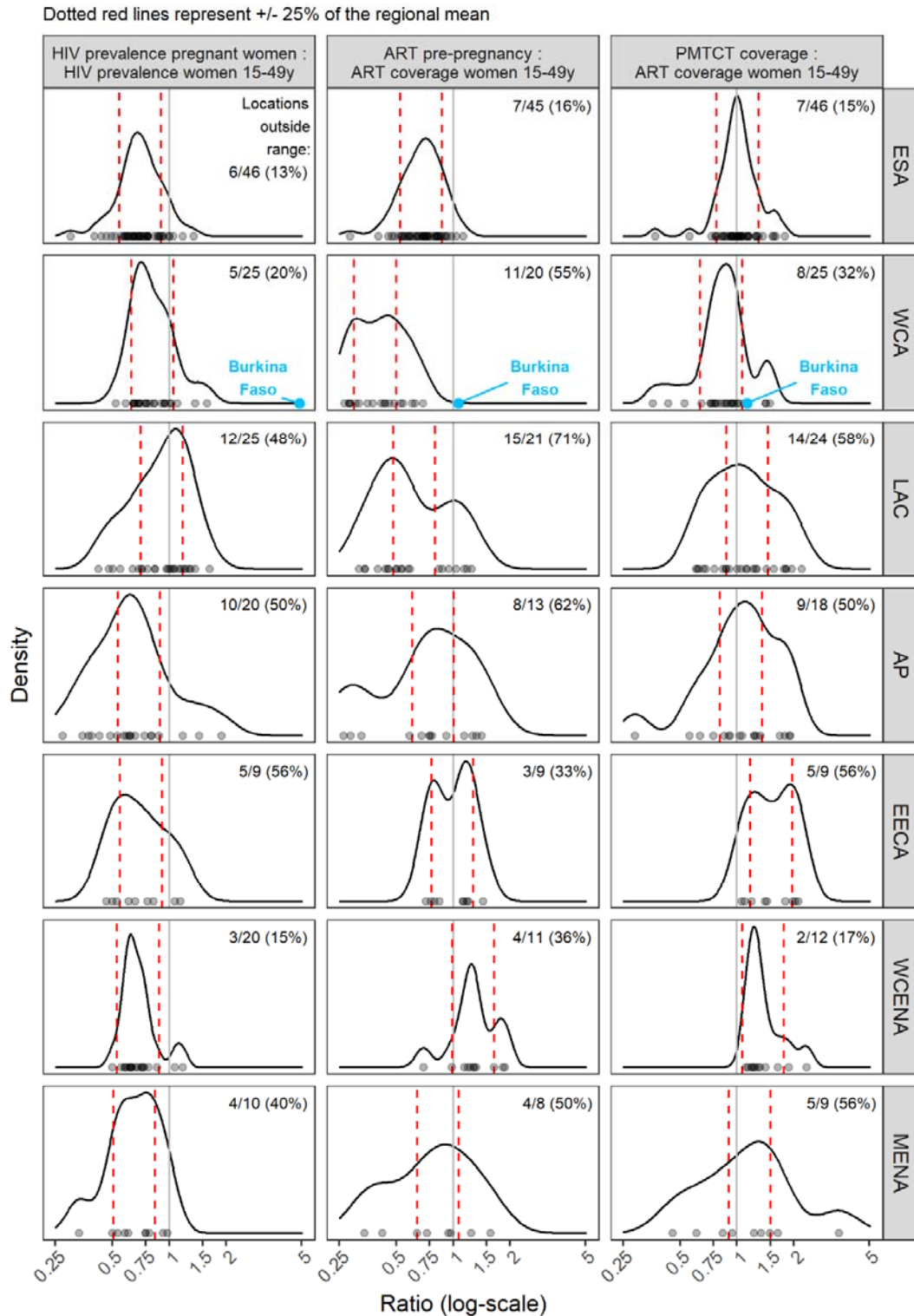
Harmonizing AIM estimates of PWLHIV



374

375 **Figure 1.** Recommendations to align Spectrum-AIM estimates of HIV prevalence and
 376 treatment coverage of pregnant women with regional means.

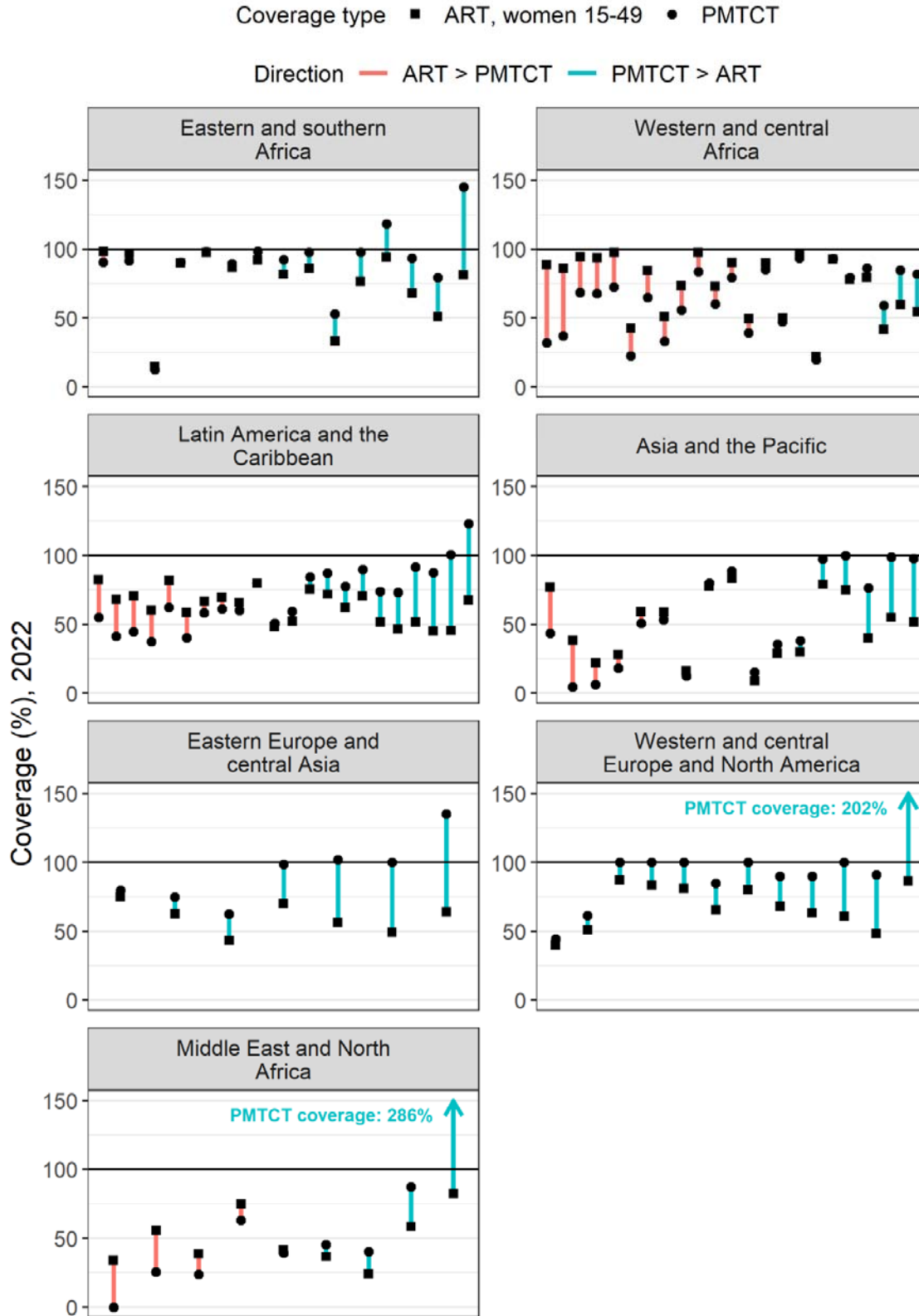
Harmonizing AIM estimates of PWLHIV



377

378 **Figure 2.** Prevalence, ART pre-pregnancy, and PMTCT ratio by region. Points on the x-axis
 379 represent distribution of ratios for all locations. Red dashed lines represent typical ranges of
 380 each ratio by region calculated as 0.75 – 1.25 times the mean value. Curved lines show
 381 density of ratios by region, with more common ratios represented as peaks. Multimodal
 382 distributions represent within region heterogeneity of ratios, meaning the ‘typical’ ranges
 383 should be interpreted with caution.

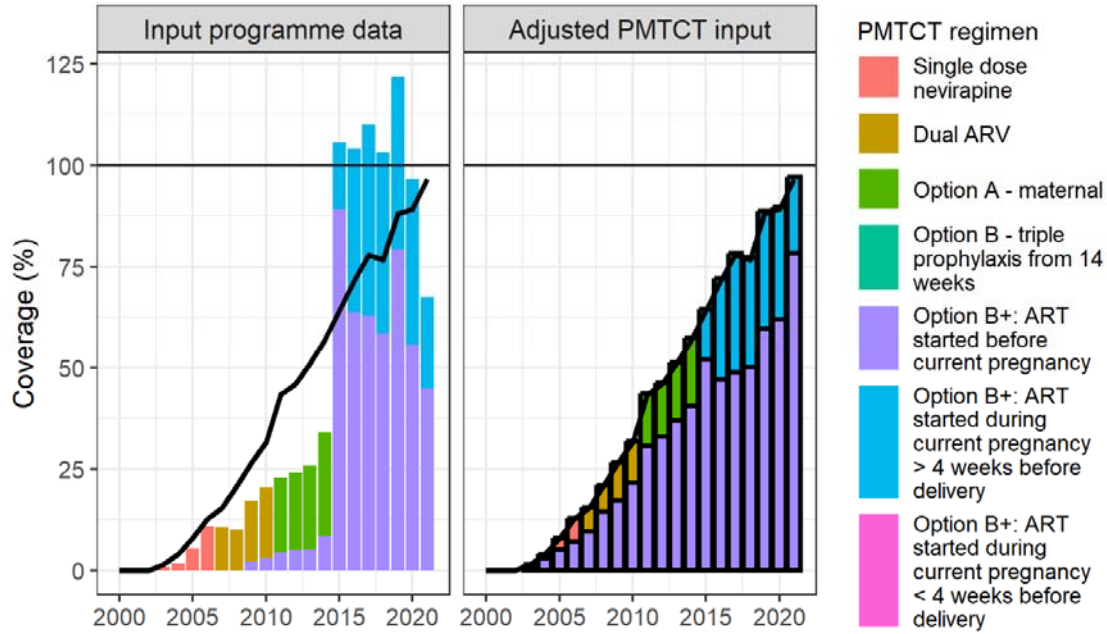
Harmonizing AIM estimates of PWLHIV



384
385
386
387
388

Figure 3. Difference between ART coverage among WLHIV 15-49y and ART coverage at delivery in 2022 for all countries analysed (grouped by region). Length of line indicates size of difference for a given country, colour of line indicates whether ART coverage or PMTCT coverage was higher, and shape of dot indicates the type of coverage.

Harmonizing AIM estimates of PWLHIV



Black line is ART coverage women 15-49y

389
390
391
392
393
394
395
396

Figure 4. Adjustment of PMTCT programme data for Burkina Faso, shown as the implied percentage coverage relative to Spectrum-AIM-estimated PWLHIV. Bars show estimated PMTCT coverage by regimen; and the line shows ART coverage among all WLHIV 15-49y for comparison. Left: using original PMTCT programme data; right: adjustment to address outcomes of the alignment assessment (Figure 1), as described in section S2 of SDC, bold outlining indicates a modelled value.

Harmonizing AIM estimates of PWLHIV

397 References

- 398 1 Mahy M, Stover J, Kiragu K, *et al.* What will it take to achieve virtual elimination of mother-
399 to-child transmission of HIV? An assessment of current progress and future needs. *Sex*
400 *Transm Infect* 2010; **86**: ii48–55.
- 401 2 Taylor M, Newman L, Ishikawa N, *et al.* Elimination of mother-to-child transmission of HIV
402 and Syphilis (EMTCT): Process, progress, and program integration. *PLOS Med* 2017; **14**:
403 e1002329.
- 404 3 Thisyakorn U. Elimination of mother-to-child transmission of HIV: lessons learned from
405 success in Thailand. *Paediatr Int Child Health* 2017; **37**: 99–108.
- 406 4 World Health Organization. Global guidance on criteria and processes for validation-
407 elimination of mother-to-child transmission of HIV, syphilis and hepatitis B virus. World
408 Health Organization, 2021 [https://www.who.int/publications-detail-](https://www.who.int/publications-detail-redirect/9789240039360)
409 [redirect/9789240039360](https://www.who.int/publications-detail-redirect/9789240039360) (accessed Dec 4, 2023).
- 410 5 Eaton JW, Brown T, Puckett R, *et al.* The Estimation and Projection Package Age-Sex
411 Model and the r-hybrid model: new tools for estimating HIV incidence trends in sub-
412 Saharan Africa. *AIDS Lond Engl* 2019; **33**: S235.
- 413 6 Mahiane SG, Eaton JW, Glaubius R, Case KK, Sabin KM, Marsh K. Updates to
414 Spectrum’s case surveillance and vital registration tool for HIV estimates and projections.
415 *J Int AIDS Soc* 2021; **24**: e25777.
- 416 7 Ghys PD, Brown T, Grassly NC, *et al.* The UNAIDS Estimation and Projection Package: a
417 software package to estimate and project national HIV epidemics. *Sex Transm Infect*
418 2004; **80**: i5–9.
- 419 8 United Nations. World Population Prospects 2022: Summary of Results. United Nations,
420 2022 DOI:10.18356/9789210014380.
- 421 9 Lewis JJC, Ronsmans C, Ezeh A, Gregson S. The population impact of HIV on fertility in
422 sub-Saharan Africa. *AIDS Lond Engl* 2004; **18 Suppl 2**: S35-43.
- 423 10AIDSinfo | UNAIDS. <https://aidsinfo.unaids.org/> (accessed March 1, 2023).
- 424 11UNAIDS 2023 Report. UNAIDS - Glob. Rep. 2023. <https://thepath.unaids.org/> (accessed
425 Nov 30, 2023).
- 426 12El Bcheraoui C, Zúñiga-Brenes P, Ríos-Zertuche D, *et al.* Health system strategies to
427 increase HIV screening among pregnant women in Mesoamerica. *Popul Health Metr*
428 2018; **16**: 5.
- 429 13Kendall T. Consequences of Missed Opportunities for HIV Testing during Pregnancy and
430 Delayed Diagnosis for Mexican Women, Children and Male Partners. *PLOS ONE* 2014; **9**:
431 e109912.
- 432 14Hensen B, Baggaley R, Wong VJ, *et al.* Universal voluntary HIV testing in antenatal care
433 settings: a review of the contribution of provider-initiated testing & counselling. *Trop Med*
434 *Int Health* 2012; **17**: 59–70.

Harmonizing AIM estimates of PWLHIV

- 435 15Hone S, Li L, Lee S-J, Comulada WS, Detels R. Progress and Challenges of
436 Implementing Decentralized HIV Testing For Prevention of Mother-to-Child Transmission
437 of HIV – Myanmar. *Int J Matern Child Health AIDS* 2019; **8**: 44–53.
- 438 16Chu D-T, Vo H-L, Tran D-K, *et al.* Socioeconomic Inequalities in the HIV Testing during
439 Antenatal Care in Vietnamese Women. *Int J Environ Res Public Health* 2019; **16**: 3240.
- 440 17Pendse R, Gupta S, Yu D, Sarkar S. HIV/AIDS in the South-East Asia region: progress
441 and challenges. *J Virus Erad* 2016; **2**: 1–6.
- 442 18Fakoya I, Arco DÁ, Copas AJ, *et al.* Factors Associated With Access to HIV Testing and
443 Primary Care Among Migrants Living in Europe: Cross-Sectional Survey. *JMIR Public*
444 *Health Surveill* 2017; **3**: e7741.
- 445 19Stover J, Glaubius R, Kassanjee R, Dugdale CM. Updates to the Spectrum/AIM model for
446 the UNAIDS 2020 HIV estimates. *J Int AIDS Soc* 2021; **24**: e25778.
- 447 20Stover J, Glaubius R, Mofenson L, *et al.* Updates to the Spectrum/AIM model for
448 estimating key HIV indicators at national and subnational levels. *AIDS* 2019; **33**: S227.
- 449 21Stover J, Glaubius R. Methods and Assumptions for Estimating Key HIV Indicators in the
450 UNAIDS Annual Estimates Process. *JAIDS J Acquir Immune Defic Syndr* 2024; **95**: e5.
- 451 22The DHS Program - HIV Prevalence Surveys. [https://www.dhsprogram.com/topics/HIV-](https://www.dhsprogram.com/topics/HIV-Corner/hiv-prev/survey.cfm)
452 [Corner/hiv-prev/survey.cfm](https://www.dhsprogram.com/topics/HIV-Corner/hiv-prev/survey.cfm) (accessed June 5, 2023).
- 453 23Sachathep K, Radin E, Hladik W, *et al.* Population-based HIV Impact Assessments
454 (PHIA) Survey Methods, Response, and Quality in Zimbabwe, Malawi, and Zambia. *J*
455 *Acquir Immune Defic Syndr* 1999 2021; **87**: S6–16.
- 456 24McNairy ML, Teasdale CA, El-Sadr WM, Mave V, Abrams EJ. Mother and Child Both
457 Matter: Re-conceptualizing the PMTCT Care Continuum. *Curr Opin HIV AIDS* 2015; **10**:
458 403–10.
- 459 25Mmbaga EJ, Leyna GH, Mnyika KS, Klepp K-I. Comparison of HIV-1 prevalence and risk
460 factors between pregnant, non-pregnant, all women and the general population in
461 Tanzania: implications for second-generation surveillance. *Int J STD AIDS* 2009; **20**: 483–
462 8.
- 463 26Zaba B, Boerma T, White R. Monitoring the AIDS epidemic using HIV prevalence data
464 among young women attending antenatal clinics: prospects and problems. *AIDS* 2000;
465 **14**: 1633.
- 466 27Ng'ambi WF, Collins JH, Colbourn T, *et al.* Socio-demographic factors associated with
467 early antenatal care visits among pregnant women in Malawi: 2004–2016. *PLoS ONE*
468 2022; **17**: e0263650.
- 469 28Rurangirwa AA, Mogren I, Nyirazinyoye L, Ntaganira J, Krantz G. Determinants of poor
470 utilization of antenatal care services among recently delivered women in Rwanda; a
471 population based study. *BMC Pregnancy Childbirth* 2017; **17**: 142.
- 472 29Awopegba OE, Kalu A, Ahinkorah BO, Seidu A-A, Ajayi AI. Prenatal care coverage and
473 correlates of HIV testing in sub-Saharan Africa: Insight from demographic and health
474 surveys of 16 countries. *PLoS ONE* 2020; **15**: e0242001.

Harmonizing AIM estimates of PWLHIV

- 475 30 Ippoliti NB, Nanda G, Wilcher R. Meeting the Reproductive Health Needs of Female Key
476 Populations Affected by HIV in Low- and Middle-Income Countries: A Review of the
477 Evidence. *Stud Fam Plann* 2017; **48**: 121–51.
- 478 31 Hermez J, Petrak J, Karkouri M, Riedner G. A review of HIV testing and counseling
479 policies and practices in the Eastern Mediterranean Region. *AIDS* 2010; **24**: S25.
- 480 32 Mishra V. HIV testing in national population-based surveys: experience from the
481 Demographic and Health Surveys. *Bull World Health Organ* 2006; **84**: 537–45.
- 482 33 Jahun I, Ehoche A, Bamidele M, *et al.* Evaluation of accuracy and performance of self-
483 reported HIV and antiretroviral therapy status in the Nigeria AIDS Indicator and Impact
484 Survey (2018). *PLoS ONE* 2022; **17**: e0273748.
- 485 34 Chasimpha SJD, Mclean EM, Dube A, McCormack V, dos-Santos-Silva I, Glynn JR.
486 Assessing the validity of and factors that influence accurate self-reporting of HIV status
487 after testing: a population-based study. *AIDS Lond Engl* 2020; **34**: 931–41.
- 488 35 Kyu HH, Jahagirdar D, Cunningham M, *et al.* Accounting for misclassified and unknown
489 cause of death data in vital registration systems for estimating trends in HIV mortality. *J*
490 *Int AIDS Soc* 2021; **24 Suppl 5**: e25791.
- 491 36 Mwase T, Brenner S, Mazalale J, *et al.* Inequities and their determinants in coverage of
492 maternal health services in Burkina Faso. *Int J Equity Health* 2018; **17**: 58.
- 493 37 Tanou M, Kamiya Y. Assessing the impact of geographical access to health facilities on
494 maternal healthcare utilization: evidence from the Burkina Faso demographic and health
495 survey 2010. *BMC Public Health* 2019; **19**: 838.
- 496 38 Helleringer S. Understanding the Adolescent Gap in HIV Testing Among Clients of
497 Antenatal Care Services in West and Central African Countries. *AIDS Behav* 2017; **21**:
498 2760–73.
- 499 39 Cernigliaro D, Barrington C, Perez M, Donastorg Y, Kerrigan D. Factors related to fertility
500 desire among female sex workers living with HIV in the Dominican Republic. *BMC*
501 *Womens Health* 2018; **18**: 117.
- 502 40 Nattabi B, Li J, Thompson SC, Orach CG, Earnest J. A Systematic Review of Factors
503 Influencing Fertility Desires and Intentions Among People Living with HIV/AIDS:
504 Implications for Policy and Service Delivery. *AIDS Behav* 2009; **13**: 949–68.
- 505 41 Jin H, Restar A, Beyrer C. Overview of the epidemiological conditions of HIV among key
506 populations in Africa. *J Int AIDS Soc* 2021; **24**: e25716.
- 507 42 Mumtaz GR, Chemaitelly H, AlMukdad S, *et al.* Status of the HIV epidemic in key
508 populations in the Middle East and north Africa: knowns and unknowns. *Lancet HIV* 2022;
509 **9**: e506–16.
- 510 43 Michele Saounde Temgoua E, Nguéfeu Nkenfou C, Cecile Zoung-Kanyi Bissek A, *et al.*
511 HIV-1 Early Infant Diagnosis is an Effective Indicator of the Prevention of Mother-to-Child
512 Transmission Program Performance: Experience from Cameroon. *Curr HIV Res* 2015; **13**:
513 286–91.

Harmonizing AIM estimates of PWLHIV

- 514 44 Domingues RMSM, Saraceni V, Leal M do C. Mother to child transmission of HIV in
515 Brazil: Data from the 'Birth in Brazil study', a national hospital-based study. *PLOS ONE*
516 2018; **13**: e0192985.
- 517 45 Sirirungsi W, Khamduang W, Collins IJ, *et al.* Early infant HIV diagnosis and entry to HIV
518 care cascade in Thailand: an observational study. *Lancet HIV* 2016; **3**: e259–65.
- 519 46 Sibanda EL, Webb K, Fahey CA, *et al.* Use of data from various sources to evaluate and
520 improve the prevention of mother-to-child transmission of HIV programme in Zimbabwe: a
521 data integration exercise. *J Int AIDS Soc* 2020; **23**: e25524.
- 522 47 Reniers G, Eaton J. Refusal bias in HIV prevalence estimates from nationally
523 representative seroprevalence surveys. *AIDS Lond Engl* 2009; **23**: 621–9.
- 524 48 Saito S, Howard AA, Chege D, *et al.* Monitoring quality at scale: implementing quality
525 assurance in a diverse, multicountry HIV program. *AIDS Lond Engl* 2015; **29**: S129–36.
- 526