

1  
2  
3  
4  
5  
6  
7  
8  
9  
10  
11  
12  
13  
14  
15  
16  
17  
18  
19  
20

**Supplementary Information for**

**Multiplexed detection, partitioning, and persistence of wild type and vaccine strains of measles, mumps, and rubella viruses in wastewater**

Jingjing Wu<sup>1</sup>, Michael X. Wang<sup>2</sup>, Prashant Kalvapalle<sup>1</sup>, Michael Nute<sup>3</sup>, Todd J. Treangen<sup>2,3</sup>, Katherine Ensor<sup>4</sup>, Loren Hopkins<sup>5</sup>, Rachel Poretsky<sup>6</sup>, and Lauren B. Stadler<sup>1</sup>

Author affiliations:

- 1. Department of Civil and Environmental Engineering, Rice University, Houston, TX, 77005
- 2. Department of Bioengineering, Rice University, Houston, TX, 77005
- 3. Department of Computer Science, Rice University, Houston, TX, 77005
- 4. Department of Statistics, Rice University, Houston, TX, 77005
- 5. Houston Health Department, 8000 N. Stadium Dr., Houston, TX, 77054
- 6. Department of Biological Sciences, University of Illinois Chicago, Chicago, IL, 60607

\*To whom correspondence should be addressed: Lauren B. Stadler, lauren.stadler@rice.edu

## 21 **SI 1. Materials and Methods**

### 22 **SI 1.1 Assay development for measles, mumps and rubella viruses**

23 For measles, 105 complete D8 genomes (Supplementary Data 1) and 55 complete B3  
24 genomes (Supplementary Data 2) were downloaded from the NCBI Virus database <sup>1</sup>, with  
25 sample collection dates between Jan. 1, 2019 to Mar. 10, 2024, as well as 7 vaccine genomes  
26 (NCBI accessions: AF266286, AF266287, AF266288, AF266289, AF266291, FJ416067,  
27 DQ345723). A multiple sequence alignment (MSA) of all genomes above was generated with  
28 MAFFT <sup>2</sup> using default parameters. The primer pair and the WT1 probe were designed within a  
29 conserved region of the M gene with Primer3Plus <sup>3</sup>. WT2 and VA probes were designed within a  
30 region that was conserved among the wild type genomes yet bearing mismatches among the  
31 vaccine genomes.

32 For rubella, 63 complete genomes (Supplementary Data 3) were downloaded from the  
33 NCBI Virus database, with sample collection dates between Jan. 1, 2010 to Apr. 18, 2023. MSA  
34 was generated and the primer pair and the probe were designed within a conserved region of the  
35 start of RUBVgp1 gene with Primer3Plus.

36 For mumps, 108 complete genomes (Supplementary Data 4) were downloaded from the  
37 NCBI Virus database, with sample collection dates between Jan. 1, 2018 to Jun. 6, 2023. MSA  
38 was generated and the primer pair and the probe were designed within a conserved region of the  
39 L gene with Primer3Plus. The probe was manually redesigned to avoid starting with guanine.

40 Primer3Plus settings were as follows: product size of 70-150bp, primer size of 18-30bp  
41 (optimal 23bp), primer T<sub>m</sub> (melting temperature) of 53-57°C (optimal 55°C), probe T<sub>m</sub> (melting  
42 temperature) of 59-63°C (optimal 61°C), with all other parameters set to default. Output primers

43 and probes were validated with NCBI BLAST+ <sup>4</sup> against the nucleotide collection (nt/nr)  
44 database, with the target species excluded, to ensure no non-specific amplification.

45 For the Sanger sequencing primers of measles, a conserved region of the L gene was  
46 input to Primer3Plus with settings: product size of 400-500bp, primer size of 18-35bp (optimal  
47 25bp), primer T<sub>m</sub> (melting temperature) of 58-62°C (optimal 60°C).

48

## 49 **SI 1.2 WWTP influent liquid and solid fraction concentration and target viral RNA** 50 **quantification**

51 Wastewater samples were homogenized by inverting the bottle containing the sample  
52 several times and then aliquoting the sample into 50 mL centrifuge tubes. Tubes containing  
53 wastewater were centrifuged at 4,100 g and 4°C for 20 minutes to separate liquid and solid  
54 fractions. The wastewater liquid fraction concentration was described previously by Laturner et  
55 al. (2021) and Lou et al. (2022)<sup>5,6</sup> and summarized as follows. After centrifugation, the  
56 supernatant was carefully poured into an MF 3, 300ml Magnetic Filter Holder with lid kit  
57 (20030001, Sterlitech) attached to the Multi-Vac 600-MS Manifold (180600-01, Sterlitech) and  
58 Rocker 800 Oil Free Laboratory Vacuum Pump (167800, Sterlitech) system without disturbing  
59 the pellet. The Electronegative Microbiological Analysis Membrane HA Filter (HAWG047S6,  
60 Millipore Sigma) was placed into the manifold system prior to the sample addition. One mL of  
61 1.25 M MgCl<sub>2</sub>·H<sub>2</sub>O (M0250, Sigma Aldrich) solution was added to the sample in the filter cup  
62 and then gently swirled with the pipette tip to mix and allowed to stand for 5 minutes before the  
63 vacuum pump was turned on. After all the sample passed through the filter, the filter was folded  
64 and transferred into a filled bead beating tube containing 0.1 mm diameter glass beads and 1 mL  
65 of lysis buffer from the chemagic<sup>TM</sup> Prime Viral DNA/RNA 300 Kit H96 (CMG-1433,

66 PerkinElmer), which was used for nucleic acid extraction. For the wastewater solid fraction, the  
67 pellets that remained at the bottom of the tube were resuspended using 1 mL of lysis buffer from  
68 the chemagic™ Prime Viral DNA/RNA 300 Kit H96 (CMG-1433, PerkinElmer) and transferred  
69 into a filled bead beating tube containing 0.1 mm diameter glass beads.

70         Bead beating tubes containing filters or pellets were beaten for 1 minute at 3,500  
71 oscillations/m, two times using the Mini-Beadbeater 24 (112011, BioSpec) with a 2-minute  
72 break, where the tubes were placed on ice. After bead beating, the tubes were centrifuged at  
73 17,000 g and 4°C for 5 minutes. 300 µL of lysate was used as input to nucleic acids extraction  
74 using Chemagic™ Prime Viral DNA/RNA 300 Kit H96 (Chemagic, CMG-1433, PerkinElmer),  
75 following the manufacturer's protocol, and the extracted nucleic acids were eluted in 50 µL of  
76 sterile, nuclease-free water. The extracts were stored at 4°C for no more than 2 hours before  
77 quantification.

78         The concentrations of target viral RNA were quantified using one-step RT-ddPCR  
79 Advanced Kit for Probes (1864021, Bio-Rad). Droplet generation was performed using an  
80 Automated Droplet Generator (1864101, Bio-Rad) and RT-ddPCR was completed using a C1000  
81 ThermalCycler (Bio-Rad) and QX600 AutoDG Droplet Digital PCR System (Bio-Rad). Results  
82 were analyzed using QuantaSoft v1.7.4 software.

83

### 84 **SI 1.3 RT-ddPCR assays setup and thermal cycling conditions**

85 **Table SI.1:** Primers, probes, and standards used for quantification of measles, mumps, and  
86 rubella with RT-ddPCR

<b>Target</b>	<b>Assay Name</b>	<b>Sequence (5'-3') / Catalogue #</b>	<b>Accession (coordinates)</b>
Measles (M gene)	Forward Primer	AATGAAAACTGGTGTCTACAA	NC_001498.1 (3759..3781)

	Reverse Primer	GGTGATGCTCATATAAACAAACAC	NC_001498.1 (3926..3904)
	Probe – WT1	/5SUN/TCTGCGGGG/ZEN/TATCCAGCGGT/3IABkFQ/	NC_001498.1 (3897..3878)
	Probe – WT2	/5SUN/TATCCAGCG/ZEN/GTATCAGATTAAGTGCATTGCA/3IABkFQ/	NC_001498.1 (3888..3858)
	Probe – VA	/5Cy5/TATCGAGCG/TAO/GTATCAGATTAACCGCATTGCA/3IAbRQSp/	NC_001498.1 (3888..3858)
	Amplicon length	168	
	Standard (Vaccine)	VR-24 (ATCC)	
	Standard (Wildtype)	VR-1981(ATCC)	
Mumps (L gene)	Forward Primer	CATCTGGGCCAATTATAACTAC	NC_002200.1 (13312..13333)
	Reverse Primer	GATGTTTGTCTTTTCAATCTGAA	NC_002200.1 (13444..13422)
	Probe	/56-FAM/TATGTCACC/ZEN/TGAGGACAAATGTCAG/3IABkFQ/	NC_002200.1 (13351..13375)
	Amplicon length	133	
	Standard	VR-106 (ATCC)	
Rubella (RUBVgp1 gene)	Forward Primer	CAGATGCAGGTTAGTGATCA	NC_076948.1 (218..237)
	Reverse Primer	GACGTGTAGGGCTTCTTTAG	NC_076948.1 (313..294)
	Probe	/5Cy5/CCCGCCGCC/TAO/ATTGGATCGAG/3IAbRQSp/	NC_076948.1 (267..286)
	Amplicon length	96	
	Standard	VR-1359 (ATCC)	
Measles (M gene), mumps (L gene), and rubella (RUBVgp1 gene)	Gblock sequence	AATGAAAACTGGTGTCTACAACA ACACCCCACTAACTCTCCTCACACCT TGGAGAAAGGTCCTAACAACAGGGA GTGTCTTCAACGCAAACCAAGTGTGC AATGCAGTTAATCTGATACCGCTGGA TACCCCGCAGAGGTTCCGTGTTGTTT ATATGAGCATCACCTCATCTGGGCCA ATTATAACTACCTCCAAAGGTTAAA GGTATGTCACCTGAGGACAAATGTCA GGCTTTAACTACCCATCTACTCCAAA CTGTCGAATATGTTGAGCACATTCAG ATTGAAAAGACAAACATCCAGATGC AGGTTAGTGATCACCCAGCACTCCAC	

		GCAATTTTCGCGGTATACCCGCCGCCA TTGGATCGAGTGGGGCCCTAAAGAA GCCCTACACGTC	
--	--	--	--

87

88 **Table SI.2:** Final concentrations of the primer-probe mix for each target

Assay Name	Final concentration ( $\mu\text{M}$ )	40x concentration ( $\mu\text{M}$ )
Forward Primer	0.9	36
Reverse Primer	0.9	36
Probe	0.25	10

89

90 **Table SI.3:** Reaction composition for RT-ddPCR assay

Reagent	Volume ( $\mu\text{L}$ )
One-step RT-ddPCR supermix	5.5
Reverse Transcript (10x)	2.2
300 mM DTT	1.1
Primer-Probe mix of each target (40x)	0.55*
RNase/DNase-free water	0.45
RNA template	10

91 \*Final concentrations in reaction: 0.25 $\mu\text{M}$  (probe) and 0.9 $\mu\text{M}$  (forward and reverse primers)

92 **Table SI.4:** Thermal cycling condition for measles, mumps, and rubella virus RT-ddPCR assay

Cycling Step	Temperature $^{\circ}\text{C}$	Time	Number of Cycles
Reverse transcription	50	60 min	1
Enzyme activation	95	10 min	1
Denaturation	94	30 sec	40
Annealing/Extension	55	60 sec	
Enzyme Deactivation	98	10 min	
Hold (optional)	4	Infinite	1

93

94 **SI 1.4 RT-PCR assays setup and thermal cycling conditions for measles Sanger sequencing**

95 **Table SI.5:** Primers used for gene amplification of measles with RT-PCR

Target	Assay Name	Sequence (5'-3')	Accession (coordinates)
L gene (Measles)	Forward Primer	AAAAACGGATTTTCCAACCAAATGA	NC_001498.1 (9393..9417)
	Reverse Primer	CTACCAGTGAAGAATACAGGTGTGT	NC_001498.1 (9805..9829)

	Amplicon length	437	
--	-----------------	-----	--

96

97 **Table SI.6:** Reaction composition for RT-PCR assay

Reagent	Volume (µL)
2X Platinum™ SuperFi™ RT-PCR Master Mix	25
Forward primer (10 µM)	2.5*
Reverse primer (10 µM)	2.5*
SuperScript™ IV RT Mix	0.5
Template RNA	10
Nuclease-free water	9.5

98 \*Final concentrations in reaction: 0.5µM (forward and reverse primers)

99 **Table SI.7:** Thermal cycling condition for measles virus RT-PCR assay

Cycling Step	Temperature °C	Time	Number of Cycles
Reverse transcription	50	10 min	1
RT inactivation/initial denaturation	98	2 min	1
Amplification	98	10 sec	40
	56	10 sec	
	72	20 sec	
Final extension	72	5 min	1
Hold (optional)	4	Infinite	1

100

101 **SI 1.5 Calculation of partition coefficients**

102 **SI. Eq 1:**

103 
$$K_d = \frac{C_s/TSS}{C_w \times (1 L/1000 mL)}$$

104 Where:

105  $K_d$ : partitioning coefficient of target virus in wastewater solid and liquid fraction, mL/g

106  $C_s$ : target viral concentration in wastewater solid fraction, copies/L

107  $C_w$ : target viral concentration in wastewater liquid fraction, copies/L

108 TSS: wastewater total suspended solids, g/L\*

109 \*TSS was measured based on the Standard Method 2540 <sup>7</sup>

110

111 **SI 1.6 Calculation of recovery rate and inhibition factor**

112 Recovery rate calculation

113 **SI. Eq 2:**

114 
$$Recovery\ rate = \frac{C_{WW} \times V_{WW}}{C_{std} \times V_{std}} \times 100\%$$

115 Where:

116  $C_{ww}$ : concentration of target viral RNA detected in wastewater spiked with virus standards using

117 RT-ddPCR, copies/L

118  $V_{ww}$ : volume of concentrated wastewater sample, L

119  $C_{std}$ : concentration of diluted virus standards spiked into wastewater sample, copies/ $\mu$ L

120  $V_{std}$ : volume of diluted virus standard spiked into each wastewater sample,  $\mu$ L

121

122 Inhibition factor calculation

123 **SI. Eq 3:**

124 
$$Inhibition\ factor = \frac{C_{10-fold}}{C_0}$$

125 Where:

126  $C_0$ : concentration of target viral RNA detected using original nucleic acid extracts of wastewater

127 spiked with virus standards and RT-ddPCR, copies/L

128  $C_{10-fold}$ : concentration of target viral RNA detected using 10-fold diluted nucleic acid extracts of

129 wastewater spiked with virus standards and RT-ddPCR, copies/L

130



131 **SI 1.7 Measles, mumps, and rubella RNA persistence in wastewater**

132 **SI. Eq 4:**

133 
$$C_t = C_0 e^{-kt}$$

134 
$$\log_{10} \left( \frac{C_t}{C_0} \right) = \frac{-kt}{\ln(10)}$$

135 Where:

136  $C_0$ : original viral concentration in the wastewater sample, copies/L

137  $C_t$ : viral concentration in the wastewater sample at day t, copies/L

138 k: first-order decay constant, 1/days

139 t: number of days between the measurement of viral concentration in wastewater and the day that  
140 the experiment starts, days

141 **SI. Eq 5:**

142 
$$T_{90} = \frac{\ln(10)}{k}$$

143 Where:

144  $T_{90}$ : number of days needed for target viral concentration to decrease by 90% of the original  
145 concentration, days

146 k: first-order decay rate constant, 1/days

147

148 **SI 1.8 Quality control measures and limit of detection (LOD) calculation**

149 The quality control measures and the calculation of LOD are described by Lou et al.  
150 (2022)<sup>6</sup> and are summarized briefly as follows. Duplicates of negative control samples were  
151 included in the sample treatment, concentration, extraction, and quantification steps to assess  
152 potential contamination<sup>8</sup>. Specifically, for wastewater samples spiked with ATCC virus

153 standards, triplicate influent unspiked wastewater samples were stored and processed in the same  
154 way and used as negative controls for the treatment. Two 50 mL aliquots of deionized (DI) water  
155 were processed in the same way as wastewater samples and used as negative controls for  
156 concentration. Two bead tubes containing glass beads and lysis buffer were included as  
157 extraction negative controls. The negative controls for concentration and extraction were  
158 included in all ddPCR quantification plates containing the wastewater samples that were  
159 processed together with the controls. In addition, each ddPCR quantification plate included at  
160 least two no-template controls (NTCs) with RNase-free water and two positive controls using  
161 gBlock Gene Fragments (IDT, USA; sequence provided in Tables SI.1).

162 An acceptable total droplet count of at least 10,000 was established for all sample wells  
163 as recommended by the manufacturer. The method limit of detection (LOD) for ddPCR was  
164 determined as three positive droplets per well plus the maximum number of positive droplets  
165 among the negative controls. The LOD was converted to copies per  $\mu\text{L}$  of DNA template and  
166 copies per liter of wastewater based on the estimated droplet volume (0.86 nL), the number of  
167 total droplets, the volume fraction of DNA template within a droplet (10/22), and the  
168 concentration factor during sample processing. The equations used for the LOD calculation are  
169 presented in Eq SI. 7-9.

#### 170 Limit of Detection (LOD) Calculation Equations

##### 171 **SI. Eq 6:**

$$172 \quad LOD_{droplet} = 3 + \text{maximum number of positive droplets across all process blanks}^*$$

173 \* Process blanks include: two concentration blanks, two extraction blanks, and no less than two no  
174 template controls per plate included in ddPCR quantification.

##### 175 **SI. Eq 7:**

176  $LOD_{\mu L-DNA\ template}$

177  $= \frac{LOD_{droplet}}{0.86 \frac{nl}{droplet} \times n\ total\ droplets\ in\ each\ well^* \times \frac{10}{22}\ fraction\ of\ template\ within\ droplet}$

178  $= \frac{LOD_{droplet} \times 2558.14}{n\ total\ droplets}$  copies per  $\mu L$  of DNA template

179 \* The average number of total droplets in each well for measles, mumps, and rubella RT-ddPCR  
 180 assay is 19884.

181 **SI. Eq 8:**

182  $LOD_{L-wastewater}$

183  $= LOD_{\mu L-DNA\ template} \times 100\ \mu L\ total\ extraction$

184  $\times \frac{1000\ \mu L\ of\ lysis\ buffer\ with\ wastewater\ fraction\ resuspended}{600\ \mu L\ of\ lysis\ buffer\ used\ for\ extraction}$

185  $\times \frac{1}{50\ mL\ wastewater\ concentrated} \times \frac{1000\ mL}{1\ L}$

186  $= LOD_{\mu L-DNA\ template} \times \frac{1000000}{300}$  copies per L of wastewater

187 **SI 2. Results**

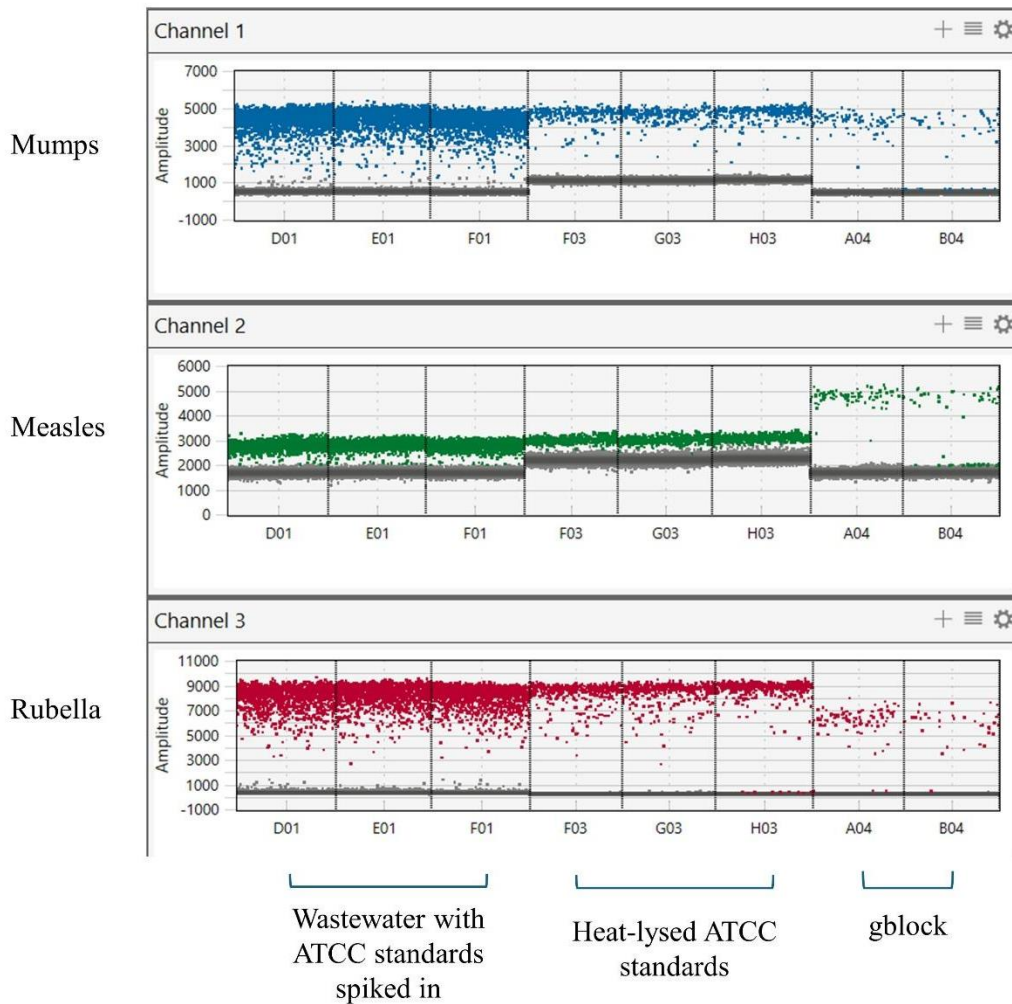
188 **SI 2.1 Measles, mumps and rubella assay validation**

189 **Table SI.8:** Number of mismatches between measles genome sequences and measles assays by  
 190 genotype

Assay	Target gene	Number of mismatches by genotype			Source
		WT - D8	WT - B3	Edmonston Vaccine	
WT1 assay	M gene	0	0	1 (probe)	This study
WT2 assay	M gene	0	1 (probe)	2-3 (probe)	This study
VA assay	M gene	2 (probe)	1 (probe)	0-1 (probe)	This study
CDC WT assay	N gene	0	1 (probe)	0	Hummel et al., 2006 <sup>9</sup>

CDC VAC assay	N gene	1 (probe)	3 (primers) 1 (probe)	0-1 (primer)	Roy et al., 2017 <sup>10</sup>
---------------	--------	-----------	--------------------------	--------------	--------------------------------

191



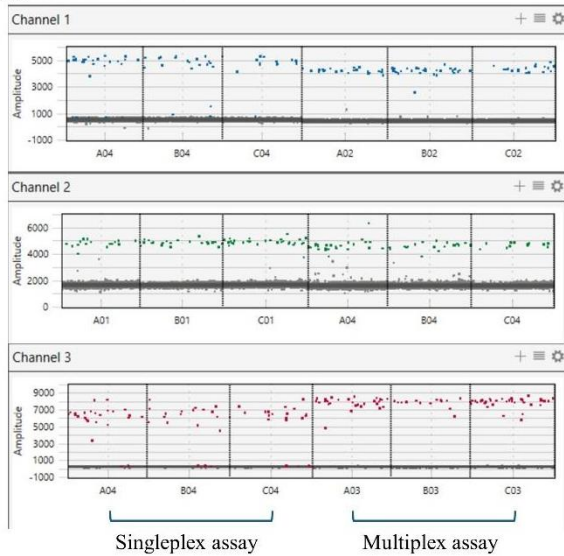
192

193 **Figure SI.1.** Multiplexed ddPCR results of measles, mumps, and rubella viral RNA assays using

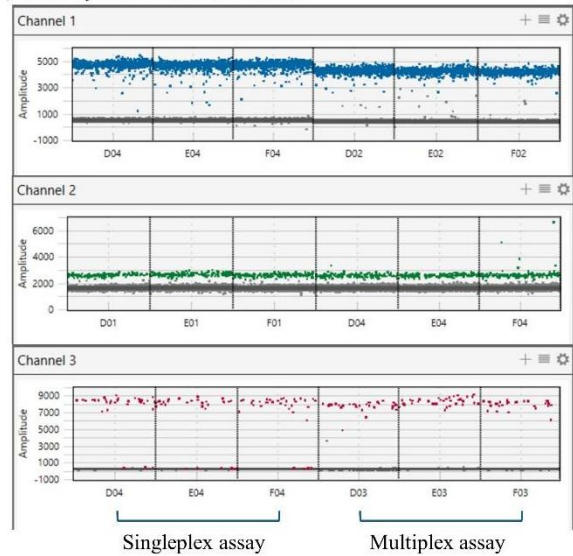
194 influent wastewater samples spiked with virus standards (columns D01, E01, and F01), heat-

195 lysed virus standards (F03, G03, and H03), and gblock standards (A04, B04).

A) gblock standards



B) Heat-lysed ATCC standards



196

197 **Figure SI.2.** Comparison of singleplex and multiplex RT-ddPCR quantification of measles,  
 198 mumps, and rubella viral RNA using gblock standards (A) and heat-lysed virus standards (B).

199

200 **Table SI.9:** Concentration of measles, mumps, and rubella viral RNA in gblock standards and  
 201 heat-lysed virus standards measured with singleplex and multiplex RT-ddPCR assays.

Target	Type of standards	Singleplex concentration ( $\pm$ standard error, copies/ $\mu$ L)	Multiplex concentration ( $\pm$ standard error, copies/ $\mu$ L)	p-value
Measles	gblock	$3.37 \pm 0.37$	$2.70 \pm 0.47$	0.33
Mumps	gblock	$3.19 \pm 0.37$	$3.03 \pm 0.68$	0.85
Rubella	gblock	$3.67 \pm 0.78$	$3.16 \pm 0.35$	0.60
Measles	Heat-lysed virus	$19.19 \pm 0.29$	$20.52 \pm 0.92$	0.29
Mumps	Heat-lysed virus	$105.96 \pm 3.92$	$98.81 \pm 0.27$	0.21
Rubella	Heat-lysed virus	$4.63 \pm 0.11$	$4.63 \pm 0.20$	0.99

202

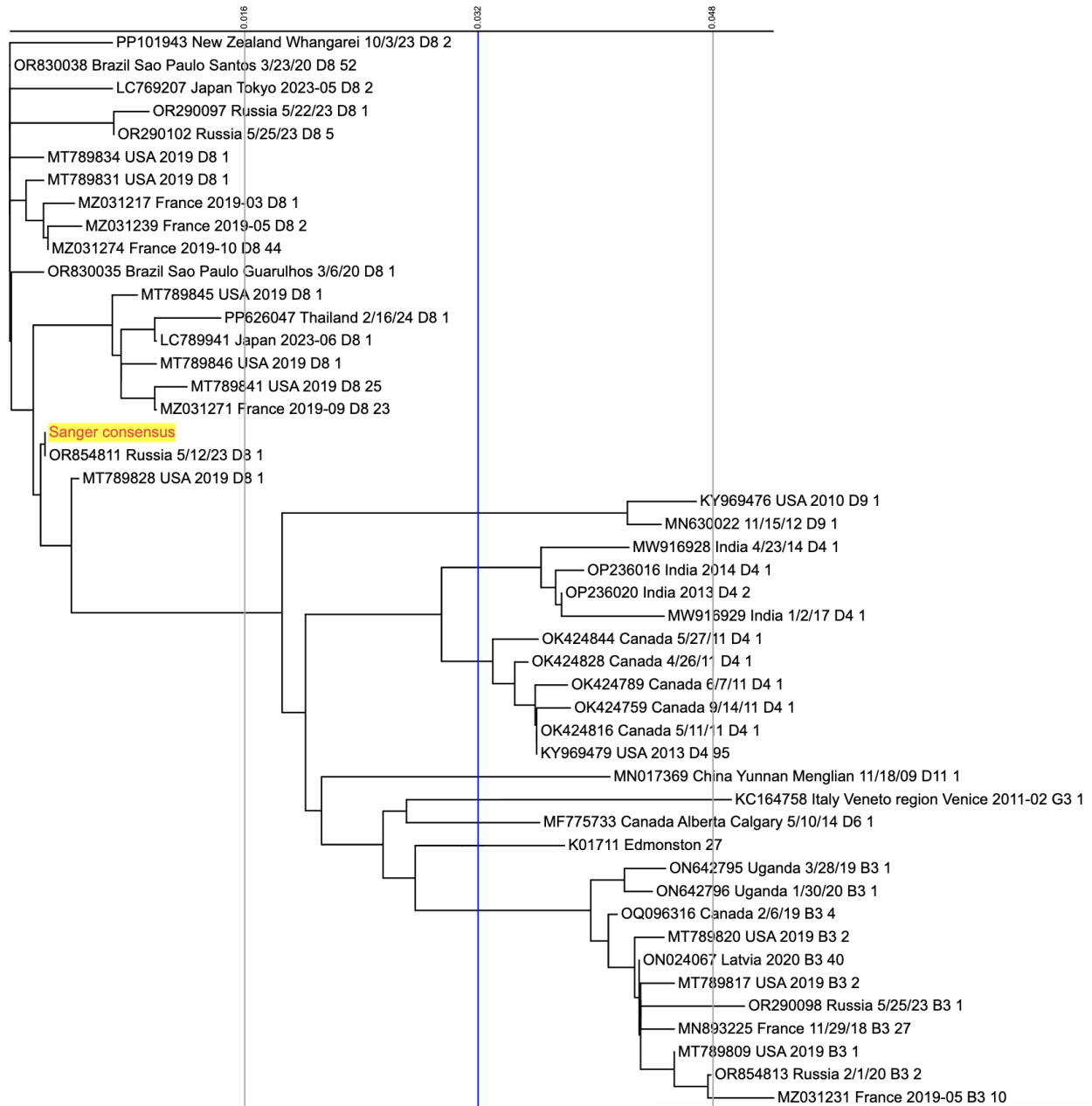
203 **Table SI.10:** Concentrations of wild type B3 and vaccine measles strains measured with measles  
 204 WT2 and VA singleplex and multiplex RT-ddPCR assays.

Strain of standards	Concentration measured with WT2 assay ( $\pm$ standard error, log <sub>10</sub> (copies/L-wastewater))	Concentration measured with VA assay ( $\pm$ standard error, log <sub>10</sub> (copies/L-wastewater))
---------------------	--	---

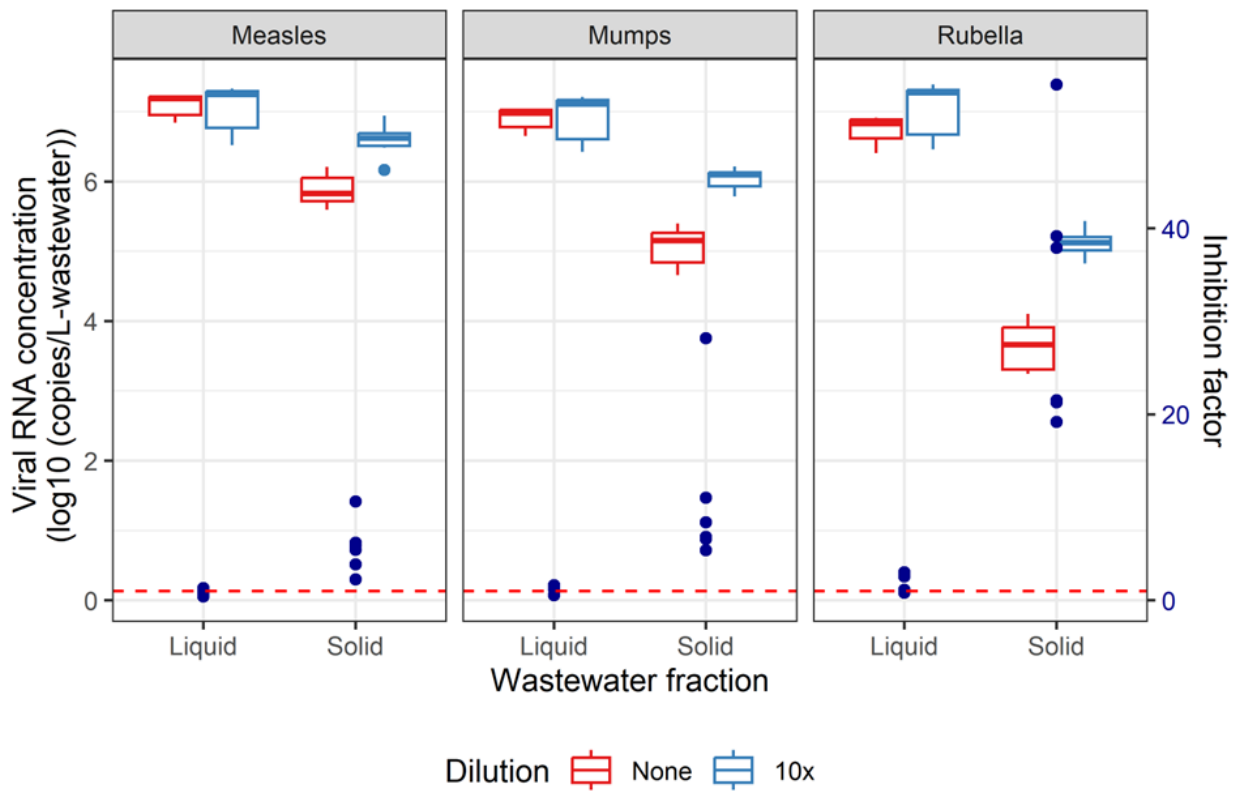
B3 and vaccine <sup>1</sup>	5.41 ± 0.06	5.43 ± 0.06
B3 and vaccine <sup>2</sup>	4.22 ± 0.09	5.39 ± 0.06
B3	4.28 ± 0.03	4.27 ± 0.03
Vaccine	5.36 ± 0.02	5.36 ± 0.02

205 <sup>1</sup> Both assays measured the concentration of both measles strains (wild type B3 and vaccine  
206 strain)

207 <sup>2</sup> The WT2 assay only measured the concentration of wild type B3 measles strain, and the VA  
208 assay only measured the concentration of vaccine measles strain. The droplets from ddPCR were  
209 distinguished using different amplitudes.  
210



212 **Figure SI.3.** A phylogenetic tree based on the consensus sequence of the Sanger sequencing  
 213 replicates of selected measles-positive wastewater samples. The phylogenetic tree was generated  
 214 using iTOL. The positive wastewater sample contained D8 genotype measles virus.  
 215  
 216 **SI 2.2 Evaluating recovery of measles, mumps, and rubella RNA from liquid and solid**  
 217 **fractions of influent wastewater samples**

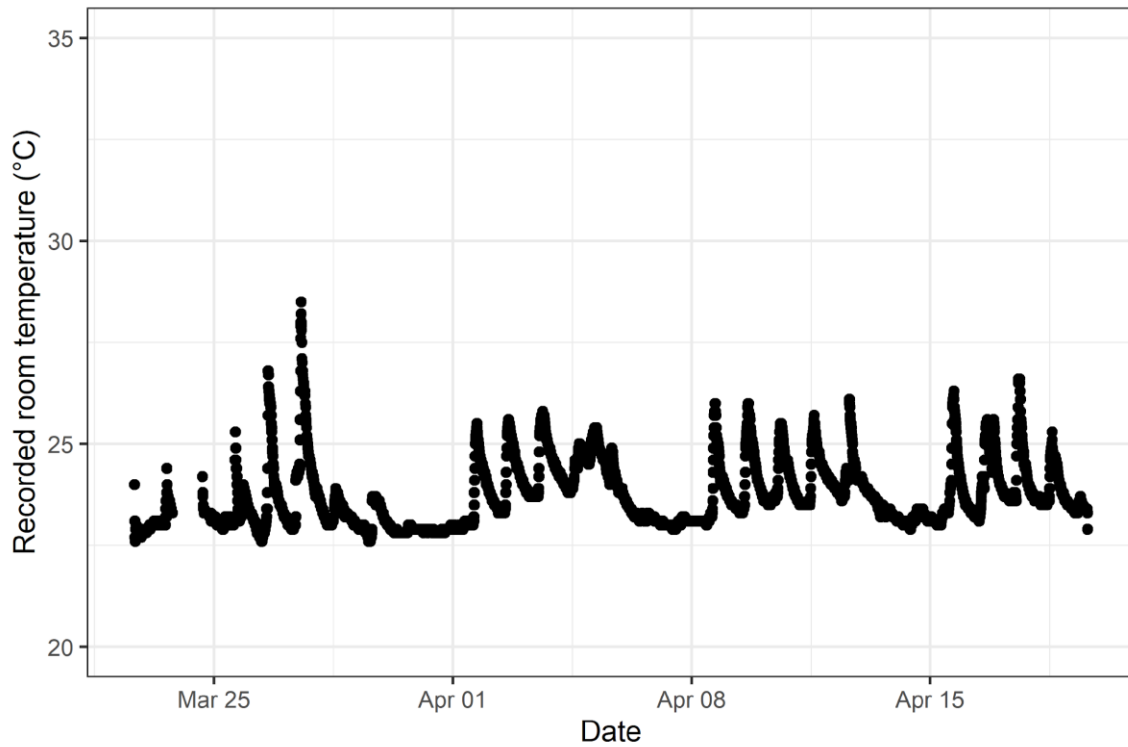


218  
 219  
 220 **Figure SI.4.** Boxplots of measles, mumps, and rubella viral RNA concentrations in influent  
 221 wastewater liquid and solid fractions. Concentrations were determined using undiluted (red) and  
 222 ten-fold diluted (blue) nucleic acid extracts from wastewater samples spiked with virus  
 223 standards. Dark blue dots indicated the inhibition factor (calculations as described in section SI

224 1.3). Higher inhibition factors indicate greater inhibition of RT-ddPCR. The red dashed line  
225 indicates no inhibition (inhibition factor = 1).

226

227 **SI 2.3 Measles, mumps, and rubella RNA persistence in wastewater**



228

229 **Figure SI.5.** Logged room temperature measurements during the persistence experiment.

230 Temperature data on day 2 is missing due to an issue with the temperature measurement  
231 instrument.

232

233 **Table SI.11:** Results from measles, mumps, and rubella RNA persistence tests in wastewater.

234 Initial RNA concentrations (day = 0) of each target in each condition from triplicates are shown.

235 The results include the first-order decay constant ( $k$ ) with standard errors, the significance level

236 of the first-order decay constant ( $p$ -value), the number of days required for 90% reduction ( $T_{90}$ ),

237 and the  $R^2$  of the linear regression.



Target	Log-transformed concentration at day 0 (copies/L-wastewater)	Temperature	k ( $\pm$ standard error)	p-value	T <sub>90</sub>	R <sup>2</sup>
Measles	7.09 $\pm$ 0.18	4°C	0.057 $\pm$ 0.008	<0.001	40.5	0.74
		Room	0.282 $\pm$ 0.017	<0.001	8.2	0.94
	6.17 $\pm$ 0.03	4°C	0.079 $\pm$ 0.004	<0.001	29.3	0.96
		Room	0.369 $\pm$ 0.014	<0.001	6.2	0.98
Mumps	6.90 $\pm$ 0.17	4°C	0.050 $\pm$ 0.007	<0.001	45.7	0.72
		Room	0.205 $\pm$ 0.011	<0.001	11.2	0.95
	6.00 $\pm$ 0.06	4°C	0.060 $\pm$ 0.005	<0.001	38.4	0.88
		Room	0.253 $\pm$ 0.010	<0.001	9.1	0.97
Rubella	6.74 $\pm$ 0.21	4°C	0.075 $\pm$ 0.007	<0.001	30.8	0.84
		Room	0.441 $\pm$ 0.024	<0.001	5.2	0.95
	5.86 $\pm$ 0.06	4°C	0.073 $\pm$ 0.004	<0.001	31.6	0.95
		Room	0.452 $\pm$ 0.024	<0.001	5.1	0.96

239

## 240 References

- 241 1 E. W. Sayers, E. E. Bolton, J. R. Brister, K. Canese, J. Chan, D. C. Comeau, R. Connor,  
242 K. Funk, C. Kelly, S. Kim, T. Madej, A. Marchler-Bauer, C. Lanczycki, S. Lathrop, Z.  
243 Lu, F. Thibaud-Nissen, T. Murphy, L. Phan, Y. Skripchenko, T. Tse, J. Wang, R.  
244 Williams, B. W. Trawick, K. D. Pruitt and S. T. Sherry, Database resources of the  
245 national center for biotechnology information, *Nucleic Acids Res.*, 2022, **50**, D20–D26.
- 246 2 K. Katoh, J. Rozewicki and K. D. Yamada, MAFFT online service: multiple sequence  
247 alignment, interactive sequence choice and visualization, *Brief. Bioinform.*, 2019, **20**,  
248 1160–1166.
- 249 3 A. Untergasser, I. Cutcutache, T. Koressaar, J. Ye, B. C. Faircloth, M. Remm and S. G.  
250 Rozen, Primer3—new capabilities and interfaces, *Nucleic Acids Res.*, 2012, **40**, e115.
- 251 4 C. Camacho, G. Coulouris, V. Avagyan, N. Ma, J. Papadopoulos, K. Bealer and T. L.  
252 Madden, BLAST+: architecture and applications, *BMC Bioinformatics*, 2009, **10**, 421.
- 253 5 Z. W. Laturner, D. M. Zong, P. Kalvapalle, K. R. Gamas, A. Terwilliger, T. Crosby, P.  
254 Ali, V. Avadhanula, H. H. Santos, K. Weesner, L. Hopkins, P. A. Piedra, A. W. Maresso  
255 and L. B. Stadler, Evaluating recovery, cost, and throughput of different concentration  
256 methods for SARS-CoV-2 wastewater-based epidemiology, *Water Res.*, 2021, **197**,  
257 117043.
- 258 6 E. G. Lou, N. Sapoval, C. McCall, L. Bauhs, R. Carlson-Stadler, P. Kalvapalle, Y. Lai,  
259 K. Palmer, R. Penn, W. Rich, M. Wolken, P. Brown, K. B. Ensor, L. Hopkins, T. J.  
260 Treangen and L. B. Stadler, Direct comparison of RT-ddPCR and targeted amplicon

261 sequencing for SARS-CoV-2 mutation monitoring in wastewater, *Sci. Total Environ.*,  
262 2022, **833**, 155059.  
263 7 In *Standard Methods For the Examination of Water and Wastewater*, American Public  
264 Health Association, 2017.  
265 8 M. A. Borchardt, A. B. Boehm, M. Salit, S. K. Spencer, K. R. Wigginton and R. T.  
266 Noble, The Environmental Microbiology Minimum Information (EMMI) Guidelines:  
267 qPCR and dPCR Quality and Reporting for Environmental Microbiology, *Environ. Sci.*  
268 *Technol.*, 2021, **55**, 10210–10223.  
269 9 K. B. Hummel, L. Lowe, W. J. Bellini and P. A. Rota, Development of quantitative gene-  
270 specific real-time RT-PCR assays for the detection of measles virus in clinical specimens,  
271 *J. Virol. Methods*, 2006, **132**, 166–173.  
272 10 F. Roy, L. Mendoza, J. Hiebert, R. J. McNall, B. Bankamp, S. Connolly, A. Lüdde, N.  
273 Friedrich, A. Mankertz, P. A. Rota and A. Severini, Rapid Identification of Measles Virus  
274 Vaccine Genotype by Real-Time PCR, *J. Clin. Microbiol.*, 2017, **55**, 735–743.  
275