

# Development and Validation of a Diagnostic Prediction Rule for Osteopenia

Thammabhorn Janwittayanuchit<sup>1</sup>

Naritsaret Kaewboonlert<sup>2,\*</sup>

Pornthep Tangkanjanavelukul<sup>2</sup>

Kitirat Phattaramarut<sup>2</sup>

Pattama Thongdee<sup>2</sup>

1 Suranaree University of Technology Hospital, Nakhon Ratchasima 30000, Thailand

2 Institute of Medicine, Suranaree University of Technology, Nakhon Ratchasima 30000, Thailand

\* Corresponding author: School of Surgery, Institute of Medicine, Suranaree University of Technology, Nakhon Ratchasima 30000, Thailand. Tel: +66 4422 3956, E-mail: [naritcv@gmail.com](mailto:naritcv@gmail.com)

## 27 **Abstract**

### 28 **Objectives**

29 To triage patients with a high likelihood of osteopenia before referring them for a standard bone  
30 mass density test for diagnosis.

### 31 **Introduction**

32 Osteopenia defined by low bone mineral density, is a precursor for osteoporosis and is primarily  
33 associated with aging-linked natural bone loss in adulthood. The model and findings can be used  
34 to adopt an inclusive screening and swift treatment model that can work in most settings where  
35 resources are limited.

### 36 **Methods**

37 We developed a diagnostic prediction rule based on clinical characteristics. A retrospective cohort  
38 of 798 patients who were going to be diagnosed with osteopenia or osteoporosis, within January-  
39 September 2022. The multivariable logistic regression to assess potential predictors. The logistic  
40 coefficients were transformed as a risk-based scoring system. The internally validation was  
41 performed using a bootstrapping procedure.

### 42 **Results**

43 The model initially included seven predictors: sex, age, height, weight, body mass index, diabetes  
44 mellitus, and estimated glomerular filtration rate. However, after using backward elimination for  
45 model reduction, only three predictors—sex, age, and weight—were retained in the final model.  
46 The discrimination performance was assessed with the area under the receiver operating  
47 characteristic curve (AuROC); it was 0.779 (95%CI 0.74-0.82), and the calibration plot showed

48 good calibration. For internal validation, bootstrap resampling was utilized, yielding an AuROC of  
49 0.768 (95% CI 0.73-0.81), indicating robust performance of the model.

## 50 **Conclusions**

51 This study developed and internally validated the Osteopenia Simple Scoring System. This clinical  
52 risk score could be one of the important tools for diagnosing osteopenia and allocating resources  
53 in resource-limited settings.

54

## 55 **Keywords**

56 Osteopenia, Osteoporosis, Risk prediction, Diagnostic prediction rule, Clinical prediction

57

## 58 **Introduction**

59 Osteopenia is a decrease in bone mineral density (BMD) below normal values for their  
60 ages, is the initial stage of bone loss, which may progress to a more severe condition i.e.  
61 osteoporosis. However, that doesn't always lead to osteoporosis depending on many factors. The  
62 primary cause of osteopenia is the natural bone loss that occurs gradually during adulthood.  
63 Secondary causes supposed to accelerate bone loss include lifestyle factors[1] such as smoking,  
64 certain underlying diseases, steroid usage, early menopausal woman, rheumatoid arthritis, and  
65 some medications as well. Osteopenia is often a precursor to osteoporosis, which are now  
66 diagnosed by measuring bone mineral density using dual energy X-ray absorptiometry bone  
67 scans.[2] The osteopenia, as defined by the World Health Organization (WHO) is a t-score  
68 between -1 to -2.5, while values less than -2.5 are diagnostic for osteoporosis.[3, 4] Osteopenia

69 is not considered a disease while osteoporosis is. In the other hand, osteopenia is considered a  
70 marker for risk of fractures.[5]

71 The potential predictors of bone mass density in patients with fractures treated in hospitals  
72 were found that factors such as age, sex, smoking, history of adult wrist fractures, spinal  
73 deformities[6, 7], history of adult hip fractures, and osteoarthritis of the spine[8] significantly  
74 differed statistically between groups with normal bone mass density and those with bone mass  
75 density below -1 standard deviation. Low body mass index, low vitamin D level[9] and diabetes[10,  
76 11], chronic kidney disease[12] are also associated with osteoporosis.

77 There has been increasing attention to the clinical predictive models of diagnostic  
78 screening models for the prediction of fracture risk in patients diagnosed with osteoporosis.[13-  
79 16] Clinical predictive models are commonly used in clinics for the purpose of disease diagnosis,  
80 outcome prediction, and evaluation of the clinical response.[17, 18] We used multivariable logistic  
81 regression to develop predictive models for possible use in the facilitation of early treatment and  
82 screening for osteopenia.

83 In countries with limited resources, access to a test for bone mass density would be far-  
84 fetched. This research aims to help triage patients at high risk of having osteopenia before they  
85 are referred for a standard BMD test for diagnosis. This work could be extended to programs  
86 aimed to osteopenia or osteoporosis screening in the community.

87

## 88 **Methods**

### 89 **Study design and setting**

90 This diagnostic prediction research, utilizing a retrospective cohort design, was conducted  
91 at Suranaree University of Technology Hospital in Nakhon Ratchasima, located in the lower  
92 northeastern region of Thailand. Our university hospital conducts more than 2,000 bone mass  
93 density tests annually.

94 This study gathered demographic and laboratory data, including age, weight, height, body  
95 mass index, smoking status, early menopause, rheumatoid arthritis, diabetes mellitus, chronic  
96 kidney disease, serum creatinine, and estimated glomerular filtration rate levels from the  
97 electronic medical records of Suranaree University Technology Hospital. The data collection  
98 period spanned from January to September 2022. BMD was used in the analysis. Participants  
99 previously diagnosed with osteopenia or osteoporosis were excluded from the study.

100

## 101 **Confirmation of cases**

102 All patients included in this study underwent a BMD test on a single machine at the  
103 hospital's checkup center. In this study, osteopenia is defined as a T-score of less than -1, and  
104 osteoporosis is defined as a T-score of less than -2.5.

105

## 106 **Statistical analysis and sample size calculations**

107 Continuous variables were assessed for normality and presented as means and standard  
108 deviations if normally distributed, or medians and interquartile ranges if not. Mean differences of  
109 the variables between the two groups were compared by using an independent t-test, or rank-  
110 sum test based on the distribution of the data. Categorical data were expressed as frequencies  
111 and percentages of the total in each group and compared between groups using either the exact  
112 probability test or chi-square test where applicable. We assessed diagnostic performance and

113 potential prediction by univariable logistic regression, using crude odds ratios (OR) and their  
114 corresponding area under the receiver operating characteristic curves (AuROC). Statistically  
115 significant two-sided p-values less than 0.05 were considered in applicable cases. All analyses  
116 were done using Stata statistical software version 17. In the development of clinical prediction  
117 rules based on methods described by Riley et al.[19], it was estimated that the minimum sample  
118 size for a multivariable prediction model with a binary outcome was required. This was estimated  
119 from a model c-statistic of 0.8, six candidate predictors, and an assumed prevalence of  
120 osteopenia from a preliminary study, standing at 46%, to get the minimum sample size of 382  
121 cases with 176 events.

122

## 123 **Model development and validation**

124 All potential predictor variables necessary for diagnostic prediction of osteopenia in our  
125 routine practice were extracted from the hospital's electronic medical records. These included  
126 age, sex, height, weight, smoking status, serum creatinine levels, diabetes mellitus (with or  
127 without insulin use), hypertension, early menopause, chronic kidney disease, steroid use, and  
128 rheumatoid arthritis.

129 We identified potential predictors based on prior knowledge; about the biological process,  
130 a review of the literature, and available prediction models. Subsequently, the exploratory analysis  
131 of significant predictors was done using a univariable logistic regression. We assessed the  
132 significance of the predictors through the diagnostic odds ratio and the corresponding p-value.  
133 Additionally, we assessed the area under the receiver operating characteristic curve (AuROC) for  
134 each univariable logistic model. Any predictor variable showing an odds ratio >1.00, significant p-  
135 value of <0.05, and higher AuROC than others was included in the model. Continuous potential  
136 variables were categorized into ordinal following the preceding model and review of literature.

137 Therefore, in this respect, understanding the nature of the relationship between the dependent  
138 variable and the outcome to determines the cut-off point.

139 The model to be used for the study is derived from the multivariable logistic regression  
140 with a binary outcome. The factors that not contributing to the outcome were removed using the  
141 backward elimination method. A total of four predictors got pruned from the model: height, body  
142 mass index, diabetes mellitus, and estimated glomerular filtration rate. Diagnostic performance of  
143 the developed model was assessed using the reduced multivariable model by means of  
144 calibration and discrimination. Calibration was assessed by the Hosmer-Lemeshow goodness-of-  
145 fit test, and a plot was applied to show both the model-estimated disease probabilities and  
146 observed disease data. The discriminative ability of the model was graphically tested through a  
147 distributional plot. It was reported with the area under the curve of the receiver operating  
148 characteristic. The internal validation was conducted using the bootstrapping procedure of 1000  
149 replications.

150

## 151 **Simplified score derivation**

152 Each predictor in the multivariable model was assigned a specific score based on the  
153 logistic regression coefficients. The coefficient of each predictor was divided by the smallest  
154 coefficient and then rounded up to the nearest whole number. Utilizing a population-analogue  
155 approach, the positive predictive value (PPV) was calculated to demonstrate the predictive  
156 performance. Calibration and discrimination measurements were also conducted using the score-  
157 based multivariable logistic model.

158

## 159 **Ethical considerations**

160 This research was conducted based on ethical standards of clinical research. According  
161 to the Helsinki Declaration and began its activity only after it received approval and permission  
162 from the Institutional Review Board of Suranaree University of Technology regarding the review  
163 of the research protocol. Retrospective data were extracted through data record forms. The  
164 patients were treated by the routine hospital staff and were not affected by any research protocols,  
165 the informed consent was waived. The study adhered to the reporting guidelines outlined in the  
166 Transparent Reporting of a multivariable prediction model for Individual Prognosis Or Diagnosis  
167 (TRIPOD) statement. The study protocol received approval from the Institutional Review Board  
168 of Suranaree University of Technology, with approval number COA No.32/2567.

169

## 170 **Results**

### 171 **Participants**

172 A total of 798 participants were evaluated for osteopenia at the Suranaree University of  
173 Technology check-up center from January to September 2022. After excluding 242 patients  
174 previously diagnosed with osteopenia or osteoporosis, the remaining 556 patients were divided  
175 into two groups: 230 in the osteopenia group and 326 in the non-osteopenia group. The  
176 prevalence of osteopenia and osteoporosis was 41.4% and 5.4%, respectively. Of these, 198  
177 patients in the osteopenia group and 188 in the non-osteopenia group were female. The mean  
178 age for the osteopenia group was  $65.07 \pm 10.34$  years, compared to  $59.03 \pm 9.14$  years for the non-  
179 osteopenia group. The average weight was  $57.40 \pm 9.58$  kg for osteopenia cases and  $57.40 \pm 12.71$   
180 kg for non-osteopenia cases. Average heights were  $155.22 \pm 7.50$  cm for the osteopenia group  
181 and  $160.53 \pm 8.00$  cm for the non-osteopenia group. The mean BMI was  $24.68 \pm 14.44$  kg/m<sup>2</sup> for  
182 osteopenia cases and  $25.64 \pm 4.02$  kg/m<sup>2</sup> for non-osteopenia cases (Table 1). There were



183 significant differences in groups in terms of female gender, age, weight, height, BMI, and current  
184 underlying diseases, including diabetes mellitus, as well as in laboratory factors such as estimated  
185 glomerular filtration rate (eGFR) ( $p < 0.001$ ). There were no significant differences in the serum  
186 creatinine, early menopause, rheumatoid arthritis, and smoking status.

187

## 188 **Model development and internal validation**

189 The following continuous variables were converted to ordinal variables: eGFR, body mass  
190 index, weight, age, and height. The cut points were determined based on information gathered  
191 from the literature and prior models. The model was developed using multivariable logistic  
192 regression, which demonstrated the relevant characteristics included in the regression for  
193 predicting osteopenia were female gender, age, height, weight, BMI, diabetes mellitus, and eGFR.  
194 These factors remained significant in the multivariable logistic regression analysis and were  
195 integrated into the full risk prediction model (Table 2).

196 The reduced model employed a backward elimination strategy. Multivariable logistic  
197 regression indicated that female gender, age, and weight, which were included in the final model,  
198 were found to be statistically significant. The scoring ranged from 1 to a maximum of 5 points,  
199 accumulating to a total of 13 points, summing up to 133. Ages over 70 years were assigned the  
200 highest scores (Table 3).

201 The calibration plot of the estimated risk of osteopenia compared to the actual risk showed  
202 acceptable calibration, with observed probabilities closely matching the expected probabilities  
203 and exhibiting minimum variation from the ideal (Figure 2). The Hosmer-Lemeshow goodness-of-  
204 fit statistic yielded a non-significant result for the outcome ( $p = 0.614$ ), suggesting that the  
205 statistical fitness of the model was satisfactory, given that a p-value larger than 0.1 was regarded

206 indicative of a good fit. Area under the receiver operating characteristic curve (AuROC) was  
207 0.7792 (95% CI 0.74-0.82), showing a good performance in model discrimination (Figure 3).

208 The process of internal validation was conducted by utilizing a bootstrap resampling  
209 technique with 1000 repeats. Following the adjustment for optimism in discrimination, the  
210 bootstrap analysis produced an area under the receiver operating characteristic curve (AuROC)  
211 of 0.768 (95% CI 0.73-0.81), indicates a good ability and a significant level of agreement between  
212 the estimated and observed probabilities of risk (Supplementary material).

213

## 214 **Simple score cut point identification**

215 A very high sensitivity of 94.8% (95% CI 91.1-97.3) was observed at a cut point of  $\geq 4$ ,  
216 while the specificity was 28.5% (95% CI 23.7-33.8). At a score of  $\geq 10$ , the specificity was high at  
217 91.7% (95% CI 88.2-94.5), but the sensitivity was lower at 44.3% (95% CI 37.8-51.0). The best  
218 cut point was determined by achieving a balance between sensitivity and specificity. For a score  
219 of 6 or above, the sensitivity was 82.2% (95% CI 76.6-86.9), and the specificity was 55.2% (95%  
220 CI 49.6-60.7), with a likelihood ratio of positive result of 1.83 (95% CI 1.60-2.10). The positive  
221 predictive value was 56.4% (95% CI 50.9-61.8), whereas the negative predictive value was 81.4%  
222 (95% CI 75.7-86.3) (Table 4).

223

## 224 **Clinical utility**

225 In the context of triaging patients for osteopenia, the newly developed diagnostic  
226 prediction rule was applied. 32.37% (180 patients out of 556) were true negatives, this model can  
227 reduce the unnecessary BMD tests. Among the 211 patients who scored negatively (simple score  
228 below 6), 41 patients (18.55%) were false negatives for osteopenia, and only 2 patients (0.36%

229 of all patients) were diagnosed with osteoporosis. On the other hand, among those with a positive  
230 score test (simple score above 6), 146 patients had normal BMD and were recommended for  
231 follow-up, while 189 patients were confirmed to have osteopenia and received medical treatment  
232 according to the treatment guidelines.

233

## 234 Discussion

235 Despite the limitations, the current study managed to establish a diagnostic rule for  
236 predicting patients with osteopenia, which could strengthen an early diagnosis and the treatment  
237 of patients in osteopenia. This finding is highly relevant because our hospital faces a significant  
238 burden of bone density testing and a high prevalence of osteopenia. Moreover, the application of  
239 a predictive diagnosis logistic regression model, as conducted in the current study, also supports  
240 the efforts of other studies to implement more predictive analytics in clinical settings[20].

241 Our results emphasize the importance of a multi-factor approach in novel predictive model  
242 formulation. Specifically, our model uses the same age, sex, and weight as the known risk factors,  
243 established to predict osteopenia and osteoporosis, proven to be significant in other studies.[21]  
244 Similarly, the use of backward elimination for the purpose of precise identification of the factors  
245 allowed reducing the insignificant height and BMI from the model, as these variables have  
246 negligible impact on the model's predictability of outcomes in our patients.[22]

247 The calibration and discrimination results of our model are satisfactory and being  
248 confirmed. The results of the Hosmer-Lemeshow test and AuROC testify to the model's effective  
249 prediction of true osteopenia cases. This is confirmed by the literature on the appropriateness of  
250 calculating these metrics to check how well a diagnostic tool performs in clinical epidemiology  
251 and diagnostics.[23]

252 Furthermore, the use of this model demonstrated its significant clinical use. The  
253 prioritization of resources based on a simple score, which identifies high and low-risk patients,  
254 may also lower the risk of untreated osteopenia transitioning to osteoporosis and adhere to WHO,  
255 who suggests that more tests should be conducted on populations at higher risks.[24, 25]

256 Although the FRAX score is currently used in predicting the 10-year probability of hip  
257 fracture[26, 27], a study by Teeratakulpisarn et al[28]. reports that even though there is  
258 concordance between the 10-year probability of hip fractures for FRAX scores with and without  
259 BMD, this concordance declines in elderly and osteoporotic participants, and in those with FRAX  
260 scores without BMD. Therefore, to achieve higher accuracy, it is advisable to undergo BMD  
261 testing.

262 In 2001, Koh LK et al.[29] designed a simple tool to categorize postmenopausal Asian  
263 women (OSTA score). They utilized a questionnaire to identify those in the cohort with  
264 osteoporosis, defined as BMD T-scores  $\leq -2.5$  and use multivariable logistic regression analysis.  
265 The tool had a good performance with an area under the ROC curve of 0.79. Subsequently, it  
266 showed sensitivity of 91%, specificity of 45%, among others.[29] Additionally, upon a validation in  
267 Thai population, OSTA score presented sensitivity of 51.7% and specificity of 77.4% with a false  
268 negative rate of ~20%.<sup>[30-33]</sup> The OSTA risk classification system showed that high and medium-  
269 risk patients were significantly more likely to sustain injuries in falls and have different femoral  
270 bone fractures patterns compared to low-risk patients. Machine learning models particularly  
271 artificial neural networks offer another opportunity to predict low BMD. Comparison of both ANN  
272 models to logistic regression models to predict low BMD had no significantly different in  
273 performance for either the femoral neck or lumbar spine.[34] Although the OSTA score performs  
274 well within the Thai population and particularly among postmenopausal women, however, it can  
275 be limited use to the general population.

276 Our model's stability and reliability were internal validation via bootstrapping, process  
277 accounting for the potential optimism that can compromise prediction models developed in narrow  
278 or specific populations. All of these methods make our research more reliable and can be used  
279 to apply to similar settings with limited health care resources.

280 The study also has its limitations. In particular, the specificity of the model at some cut  
281 points was insufficient for real-life applications, resulting in overdiagnosis and overtreatment. This  
282 compromise between sensitivity and specificity is common in the development of diagnostic  
283 instruments, and it needs to be adjusted depending on the costs and risks of the disease. For  
284 future research, it is possible not only to include new, more prognostic factors but also to progress  
285 statistical instruments, such as machine learning. Further external validation is also required  
286 before adopting this model in other settings.

287

## 288 **Conclusion**

289 The development of a diagnostic prediction rule for osteopenia in a resource-limited  
290 context is a major progress in the field of bone health management. This instrument is likely to  
291 enhance patient prognosis and maximize the use of available healthcare resources by detecting  
292 and offering timely therapeutic treatment to those at risk.

293

## 294 **Acknowledgement**

295 This paper was supported by Suranaree University of Technology.

296

## 297 **Funding**

298 None

299

## 300 **Conflict of interest**

301 None

302

## 303 **Author contribution statement**

304 NK and TJ contributed to all parts of the research. PT, KP, and PT focused on discussing,  
305 reviewing, and editing the manuscript.

306

## 307 **Figure legends**

308 **Figure 1:** Study flow.

309 **Figure 2:** Calibration plot for model predicted risk for osteopenia versus actual risk.

310 **Figure 3:** Discrimination performance of the newly developed model, using clinical  
311 characteristics to classify patients with normal and low bone mass density.

312 **Figure 4:** Clinical utility.

313

## 314 **Tables**

315 **Table 1:** Baseline patient characteristics, underlying diseases, and laboratory investigations of  
 316 the derivation cohort, along with a comparison of osteopenia cases and normal bone mineral  
 317 density tests (n = 556).

Patient characteristics	Osteopenia cases (n = 230)		Non-osteopenia cases (n = 326)		Univariable OR (95%CI)	p- value	AuROC
	n	(%)	n	(%)			
Female gender	198	(86.09)	188	(57.67)	4.54 (2.94-7.00)	< 0.001	0.64 (0.61-0.68)
Age, years (mean ± SD)	65.07	± 10.34	59.03	± 9.14	1.07 (1.05-1.09)	< 0.001	0.68 (0.64-0.73)
Weight, kg (mean ± SD)	57.40	± 9.58	66.30	± 12.71	0.93 (0.91-0.95)	< 0.001	0.29 (0.25-0.34)
Height, cm (mean ± SD)	155.22	± 7.50	160.53	± 8.03	0.92 (0.89-0.94)	< 0.001	0.32 (0.28-0.37)
BMI, km/m <sup>2</sup> (mean ± SD)	24.68	± 14.44	25.64	± 4.02	0.88 (0.84-0.93)	< 0.001	0.37 (0.33-0.42)
Current smoking	1	(0.43)	5	(1.54)	0.28 (0.03-2.40)	0.245	0.49 (0.49-0.50)
Early menopause	5	(2.17)	10	(3.09)	0.70 (0.24-2.07)	0.516	0.50 (0.48-0.51)
Rheumatoid arthritis	1	(0.43)	2	(0.62)	0.70 (0.06-7.80)	0.774	0.50 (0.49-0.51)
Diabetes mellitus	15	(6.52)	45	(13.89)	0.43 (0.23-0.80)	0.007	0.46 (0.44-0.49)
Creatinine, g/dL (mean ± SD)	0.87	± 0.72	0.87	± 0.37	1.01 (0.72-1.42)	0.967	0.42 (0.37-0.48)
eGFR, ml/min/1.73 m <sup>2</sup> (mean ± SD)	68.59	± 24.13	83.71	± 25.39	0.97 (0.97-0.98)	< 0.001	0.32 (0.28-0.37)
Chronic kidney disease	25	(10.92)	37	(11.46)	0.95 (0.55-1.62)	0.844	0.50 (0.47-0.52)

318 Abbreviations: eGFR, estimated glomerular filtration rate; OR, odds ratio; CI, confidence interval

319

320 **Table 2:** Full model multivariable logistic regression analysis.

Predictors	Full model		
	mOR	95% CI	P-value
Female	5.33	3.03 - 9.38	0.000
Age, year			
≤ 59	1		
60 – 69	3.59	2.25 - 5.74	< 0.001
≥ 70	6.91	3.62 - 13.20	< 0.001
Height, cm			
≥ 155	1		
< 155	0.97	0.57 - 1.64	0.903
Weight, kg			

≥ 70	1		
60 – 69	1.15	0.61 - 2.17	0.656
50 – 59	1.66	0.72 - 3.82	0.233
≤ 49	1.72	0.54 - 5.54	0.360
Body mass index, kg/m <sup>2</sup>			
≥ 25.0	1		
23.0 – 24.9	1.19	0.64 - 2.22	0.577
18.5 – 22.9	1.71	0.79 - 3.69	0.169
< 18.5	3.94	0.87 - 17.90	0.076
Diabetes mellitus	0.35	0.17 - 0.71	0.004
Estimated GFR			
≥ 60	1		
30 – 59	0.84	0.45 - 1.54	0.565
15 – 29	1.89	0.22 - 16.05	0.558
≤ 14	1	Empty	
Model intercept	.062		

321 Abbreviation: mOR, multivariable odds ratio; BMI, body mass index; GFR, glomerular filtration

322 rate

323

324

325

326

327

328

329

330 **Table 3:** Reduced model with logit coefficients.

Predictors	mOR	95% CI	P-value	β Coefficient	Score
Female	4.09	2.51 - 6.68	0.000	1.41	4
Age, year					
≤ 59	1				
60 – 69	3.29	2.13 - 5.08	0.000	1.19	3.5
≥ 70	5.52	3.21 - 9.50	0.000	1.71	5
Weight, kg					
≥ 70	1				
60 – 69	1.40	0.80 - 2.45	0.240	0.34	1
50 – 59	2.60	1.51 - 4.50	0.001	0.96	3
≤ 49	3.96	2.02 - 7.76	0.000	1.38	4



Model intercept	.065				
-----------------	------	--	--	--	--

331 Abbreviation: mOR, multivariable odds ratio; BMI, body mass index

332

333 **Table 4:** Selection of score cut-off point with sensitivity, specificity, LHR+, PPV, NPV, and along  
334 with 95% confidence interval.

Score cut point	Sensitivity (%)	Specificity (%)	LHR+ (%)	PPV (%)	NPV (%)
≥ 4	94.8 (91.1-97.3)	28.5 (23.7-33.8)	1.33 (1.23-1.43)	48.3 (43.6-53.1)	88.6 (80.9-94.0)
≥ 6	82.2 (76.6-86.9)	55.2 (49.6-60.7)	1.83 (1.60-2.10)	56.4 (50.9-61.8)	81.4 (75.7-86.3)
≥ 10	44.3 (37.8-51.0)	91.7 (88.2-94.5)	5.35 (3.63-7.90)	79.1 (71.0-85.7)	70.0 (65.4-74.3)

335 Abbreviation: LHR+, likelihood ratio for positive test; PPV, positive predictive value; NPV,  
336 negative predictive value

337

338

339

340

341

342

## 343 References

- 344 1. Rychter AM, Ratajczak AE, Szymczak-Tomczak A, Michalak M, Eder P, Dobrowolska A,  
345 et al. Associations of Lifestyle Factors with Osteopenia and Osteoporosis in Polish Patients with  
346 Inflammatory Bowel Disease. *Nutrients*. 2021;13(6). Epub 2021/06/03. doi:  
347 10.3390/nu13061863. PubMed PMID: 34070791; PubMed Central PMCID: PMC8227497.
- 348 2. Blake GM, Fogelman I. The role of DXA bone density scans in the diagnosis and  
349 treatment of osteoporosis. *Postgrad Med J*. 2007;83(982):509-17. Epub 2007/08/07. doi:  
350 10.1136/pgmj.2007.057505. PubMed PMID: 17675543; PubMed Central PMCID:  
351 PMC2600106.
- 352 3. Sözen T, Özişik L, Başaran N. An overview and management of osteoporosis. *Eur J*  
353 *Rheumatol*. 2017;4(1):46-56. Epub 2017/03/16. doi: 10.5152/eurjrheum.2016.048. PubMed  
354 PMID: 28293453; PubMed Central PMCID: PMC5335887.

- 355 4. Johnell O, Kanis J. Epidemiology of osteoporotic fractures. *Osteoporos Int.* 2005;16  
356 Suppl 2:S3-7. Epub 2004/09/15. doi: 10.1007/s00198-004-1702-6. PubMed PMID: 15365697.
- 357 5. Tran T, Bliuc D, Pham HM, van Geel T, Adachi JD, Berger C, et al. A Risk Assessment  
358 Tool for Predicting Fragility Fractures and Mortality in the Elderly. *J Bone Miner Res.*  
359 2020;35(10):1923-34. Epub 2020/05/28. doi: 10.1002/jbmr.4100. PubMed PMID: 32460361.
- 360 6. Rozental TD, Shah J, Chacko AT, Zurakowski D. Prevalence and predictors of  
361 osteoporosis risk in orthopaedic patients. *Clin Orthop Relat Res.* 2010;468(7):1765-72. Epub  
362 2009/11/17. doi: 10.1007/s11999-009-1162-6. PubMed PMID: 19911243; PubMed Central  
363 PMCID: PMCPMC2881983.
- 364 7. Lane NE. Epidemiology, etiology, and diagnosis of osteoporosis. *Am J Obstet Gynecol.*  
365 2006;194(2 Suppl):S3-11. Epub 2006/02/02. doi: 10.1016/j.ajog.2005.08.047. PubMed PMID:  
366 16448873.
- 367 8. Grams AE, Rehwald R, Bartsch A, Honold S, Freyschlag CF, Knoflach M, et al.  
368 Correlation between degenerative spine disease and bone marrow density: a retrospective  
369 investigation. *BMC Med Imaging.* 2016;16:17. Epub 2016/02/26. doi: 10.1186/s12880-016-  
370 0123-2. PubMed PMID: 26911278; PubMed Central PMCID: PMCPMC4765052.
- 371 9. Tang G, Feng L, Pei Y, Gu Z, Chen T, Feng Z. Low BMI, blood calcium and vitamin D,  
372 kyphosis time, and outdoor activity time are independent risk factors for osteoporosis in  
373 postmenopausal women. *Front Endocrinol (Lausanne).* 2023;14:1154927. Epub 2023/11/08.  
374 doi: 10.3389/fendo.2023.1154927. PubMed PMID: 37937050; PubMed Central PMCID:  
375 PMCPMC10627178.
- 376 10. Tang Y, Zhang L, Ye D, Zhao A, Liu Y, Zhang M. Causal relationship between Type 1  
377 diabetes and osteoporosis and fracture occurrence: a two-sample Mendelian randomization  
378 analysis. *Osteoporos Int.* 2023;34(6):1111-7. Epub 2023/04/04. doi: 10.1007/s00198-023-  
379 06734-6. PubMed PMID: 37012460.
- 380 11. Ali D, Tencerova M, Figeac F, Kassem M, Jafari A. The pathophysiology of osteoporosis  
381 in obesity and type 2 diabetes in aging women and men: The mechanisms and roles of  
382 increased bone marrow adiposity. *Front Endocrinol (Lausanne).* 2022;13:981487. Epub  
383 2022/10/04. doi: 10.3389/fendo.2022.981487. PubMed PMID: 36187112; PubMed Central  
384 PMCID: PMCPMC9520254.
- 385 12. Hampson G, Elder GJ, Cohen-Solal M, Abrahamsen B. A review and perspective on the  
386 assessment, management and prevention of fragility fractures in patients with osteoporosis and  
387 chronic kidney disease. *Endocrine.* 2021;73(3):509-29. Epub 2021/05/12. doi: 10.1007/s12020-  
388 021-02735-9. PubMed PMID: 33974225; PubMed Central PMCID: PMCPMC8325650.
- 389 13. Tan J, Zhang Z, He Y, Xu X, Yang Y, Xu Q, et al. Development and validation of a risk  
390 prediction model for osteoporosis in elderly patients with type 2 diabetes mellitus: a  
391 retrospective and multicenter study. *BMC Geriatrics.* 2023;23(1):698. doi: 10.1186/s12877-023-  
392 04306-1.
- 393 14. Mauck KF, Cuddihy MT, Atkinson EJ, Melton LJ, 3rd. Use of clinical prediction rules in  
394 detecting osteoporosis in a population-based sample of postmenopausal women. *Arch Intern  
395 Med.* 2005;165(5):530-6. Epub 2005/03/16. doi: 10.1001/archinte.165.5.530. PubMed PMID:  
396 15767529.
- 397 15. Leeyaphan J, Rojjananukulpong K, Intarasompun P, Peerakul Y. Development and  
398 Validation of a New Clinical Diagnostic Screening Model for Osteoporosis in Postmenopausal  
399 Women. *J Bone Metab.* 2023;30(2):179-88. Epub 2023/07/14. doi:  
400 10.11005/jbm.2023.30.2.179. PubMed PMID: 37449350; PubMed Central PMCID:  
401 PMCPMC10346005.
- 402 16. Wang J, Kong C, Pan F, Lu S. Construction and Validation of a Nomogram Clinical  
403 Prediction Model for Predicting Osteoporosis in an Asymptomatic Elderly Population in Beijing. *J  
404 Clin Med.* 2023;12(4). Epub 2023/02/26. doi: 10.3390/jcm12041292. PubMed PMID: 36835828;  
405 PubMed Central PMCID: PMCPMC9967366.

- 406 17. Aibar-Almazán A, Voltes-Martínez A, Castellote-Caballero Y, Afanador-Restrepo DF,  
407 Carcelén-Fraile MDC, López-Ruiz E. Current Status of the Diagnosis and Management of  
408 Osteoporosis. *Int J Mol Sci.* 2022;23(16). Epub 2022/08/27. doi: 10.3390/ijms23169465.  
409 PubMed PMID: 36012730; PubMed Central PMCID: PMCPMC9408932.
- 410 18. Sun X, Chen Y, Gao Y, Zhang Z, Qin L, Song J, et al. Prediction Models for Osteoporotic  
411 Fractures Risk: A Systematic Review and Critical Appraisal. *Aging Dis.* 2022;13(4):1215-38.  
412 Epub 2022/07/21. doi: 10.14336/ad.2021.1206. PubMed PMID: 35855348; PubMed Central  
413 PMCID: PMCPMC9286920.
- 414 19. Riley RD, Snell KI, Ensor J, Burke DL, Harrell FE, Jr., Moons KG, et al. Minimum sample  
415 size for developing a multivariable prediction model: PART II - binary and time-to-event  
416 outcomes. *Stat Med.* 2019;38(7):1276-96. Epub 2018/10/26. doi: 10.1002/sim.7992. PubMed  
417 PMID: 30357870; PubMed Central PMCID: PMCPMC6519266.
- 418 20. Riley RD, Pate A, Dhiman P, Archer L, Martin GP, Collins GS. Clinical prediction models  
419 and the multiverse of madness. *BMC Med.* 2023;21(1):502. Epub 2023/12/19. doi:  
420 10.1186/s12916-023-03212-y. PubMed PMID: 38110939; PubMed Central PMCID:  
421 PMCPMC10729337.
- 422 21. Poursmaeili F, Kamalidehghan B, Kamarehei M, Goh YM. A comprehensive overview  
423 on osteoporosis and its risk factors. *Ther Clin Risk Manag.* 2018;14:2029-49. Epub 2018/11/23.  
424 doi: 10.2147/tcrm.S138000. PubMed PMID: 30464484; PubMed Central PMCID:  
425 PMCPMC6225907.
- 426 22. Chowdhury MZI, Turin TC. Variable selection strategies and its importance in clinical  
427 prediction modelling. *Fam Med Community Health.* 2020;8(1):e000262. Epub 2020/03/10. doi:  
428 10.1136/fmch-2019-000262. PubMed PMID: 32148735; PubMed Central PMCID:  
429 PMCPMC7032893.
- 430 23. Alba AC, Agoritsas T, Walsh M, Hanna S, Iorio A, Devereaux PJ, et al. Discrimination  
431 and Calibration of Clinical Prediction Models: Users' Guides to the Medical Literature. *Jama.*  
432 2017;318(14):1377-84. Epub 2017/10/20. doi: 10.1001/jama.2017.12126. PubMed PMID:  
433 29049590.
- 434 24. Kanis JA. Assessment of fracture risk and its application to screening for  
435 postmenopausal osteoporosis: synopsis of a WHO report. WHO Study Group. *Osteoporos Int.*  
436 1994;4(6):368-81. Epub 1994/11/01. doi: 10.1007/bf01622200. PubMed PMID: 7696835.
- 437 25. Rubin KH, Holmberg T, Rothmann MJ, Høiberg M, Barkmann R, Gram J, et al. The risk-  
438 stratified osteoporosis strategy evaluation study (ROSE): a randomized prospective population-  
439 based study. Design and baseline characteristics. *Calcif Tissue Int.* 2015;96(2):167-79. Epub  
440 2015/01/13. doi: 10.1007/s00223-014-9950-8. PubMed PMID: 25578146.
- 441 26. Kanis JA, Johnell O, Oden A, Dawson A, De Laet C, Jonsson B. Ten year probabilities  
442 of osteoporotic fractures according to BMD and diagnostic thresholds. *Osteoporos Int.*  
443 2001;12(12):989-95. Epub 2002/02/16. doi: 10.1007/s001980170006. PubMed PMID:  
444 11846333.
- 445 27. Kanis JA, Johnell O, De Laet C, Jonsson B, Oden A, Ogelsby AK. International  
446 Variations in Hip Fracture Probabilities: Implications for Risk Assessment. *Journal of Bone and*  
447 *Mineral Research.* 2002;17(7):1237-44. doi: <https://doi.org/10.1359/jbmr.2002.17.7.1237>.
- 448 28. Teeratakulpisarn N, Charoensri S, Theerakulpisut D, Pongchaiyakul C. FRAX score with  
449 and without bone mineral density: a comparison and factors affecting the discordance in  
450 osteoporosis treatment in Thais. *Arch Osteoporos.* 2021;16(1):44. Epub 2021/02/27. doi:  
451 10.1007/s11657-021-00911-y. PubMed PMID: 33635451.
- 452 29. Koh LK, Sedrine WB, Torralba TP, Kung A, Fujiwara S, Chan SP, et al. A simple tool to  
453 identify asian women at increased risk of osteoporosis. *Osteoporos Int.* 2001;12(8):699-705.  
454 Epub 2001/10/03. doi: 10.1007/s001980170070. PubMed PMID: 11580084.
- 455 30. Chaovitsaree S, Namwongprom SN, Morakote N, Suntornlinsiri N, Piyamongkol W.  
456 Comparison of osteoporosis self assessment tool for Asian (OSTA) and standard assessment in

- 457 Menopause Clinic, Chiang Mai. J Med Assoc Thai. 2007;90(3):420-5. Epub 2007/04/13.  
458 PubMed PMID: 17427514.
- 459 31. Geater S, Leelawattana R, Geater A. Validation of the OSTA index for discriminating  
460 between high and low probability of femoral neck and lumbar spine osteoporosis among Thai  
461 postmenopausal women. J Med Assoc Thai. 2004;87(11):1286-92. Epub 2005/04/14. PubMed  
462 PMID: 15825701.
- 463 32. Chen CC, Rau CS, Wu SC, Kuo PJ, Chen YC, Hsieh HY, et al. Association of  
464 Osteoporosis Self-Assessment Tool for Asians (OSTA) Score with Clinical Presentation and  
465 Expenditure in Hospitalized Trauma Patients with Femoral Fractures. Int J Environ Res Public  
466 Health. 2016;13(10). Epub 2016/10/14. doi: 10.3390/ijerph13100995. PubMed PMID:  
467 27735874; PubMed Central PMCID: PMC5086734.
- 468 33. Panichyawat N, Tanmahasamut P. Comparison of OSTA index and KKOS scoring  
469 system for prediction of osteoporosis in postmenopausal women who attended Siriraj  
470 Menopause Clinic. J Med Assoc Thai. 2012;95(11):1365-71. Epub 2012/12/21. PubMed PMID:  
471 23252200.
- 472 34. Ongphiphadhanakul B, Rajatanavin R, Chailurkit L, Piaseu N, Teerarungsikul K, Sirisriro  
473 R, et al. Prediction of low bone mineral density in postmenopausal women by artificial neural  
474 network model compared to logistic regression model. J Med Assoc Thai. 1997;80(8):508-15.  
475 Epub 1997/08/01. PubMed PMID: 9277083.
- 476

Patients intended to be diagnosed with osteopenia in the  
Check-up center at Suranaree university of technology.  
From January to September 2022

n = 798

medRxiv preprint doi: <https://doi.org/10.1101/2024.05.23.24307788>; this version posted May 23, 2024. The copyright holder for this preprint  
(which was not certified by peer review) is the author/funder, who has granted medRxiv a license to display the preprint in perpetuity.  
It is made available under a [CC-BY 4.0 International license](https://creativecommons.org/licenses/by/4.0/).

Exclude (n = 242)

- Previous diagnosed  
osteopenia or osteoporosis

Patient clinical parameter was recorded.

Bone mineral density (BMD) test

(n = 556)

Osteopenia

(n = 230)

No osteopenia

(n = 326)

Figure 1

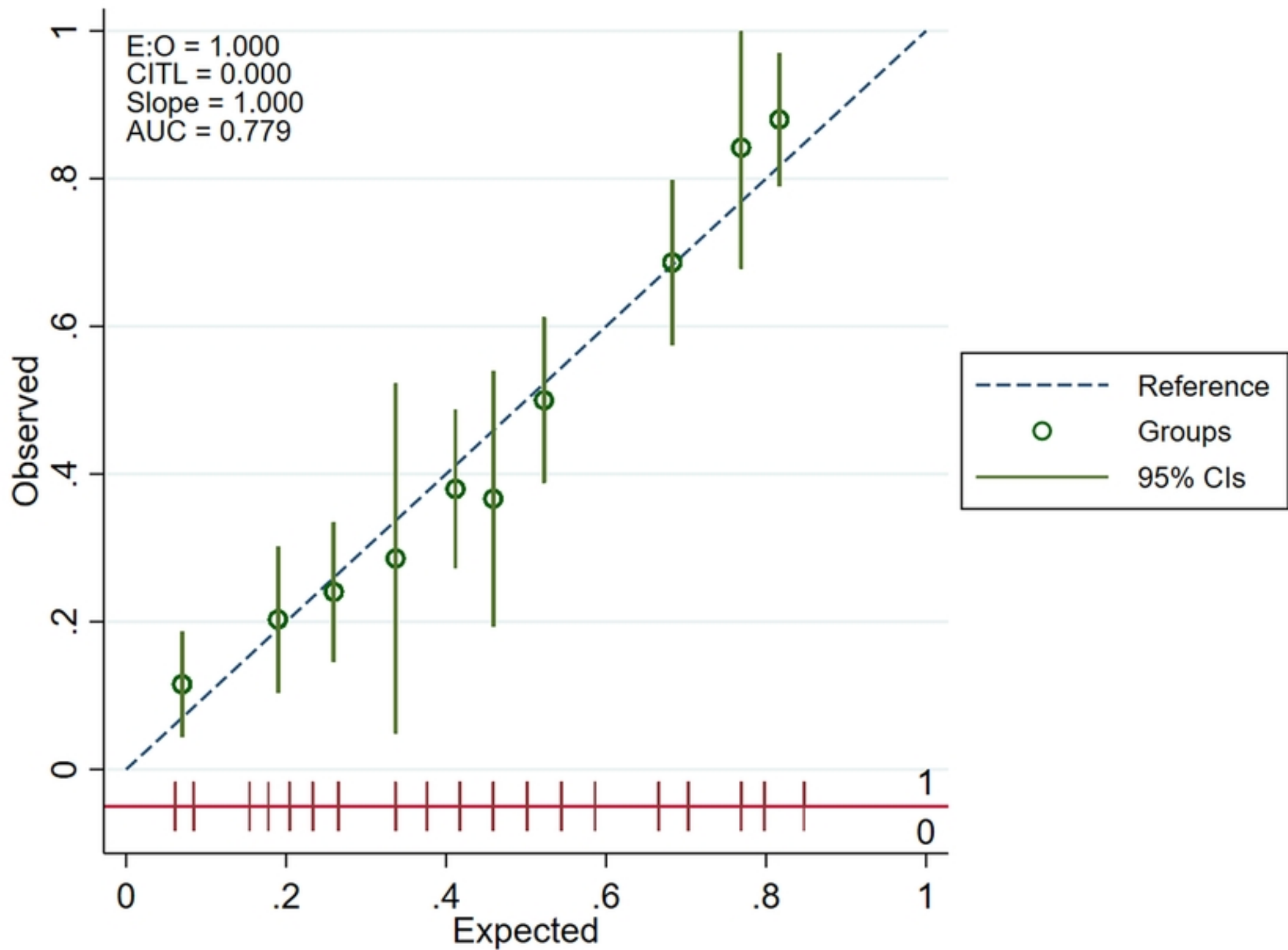
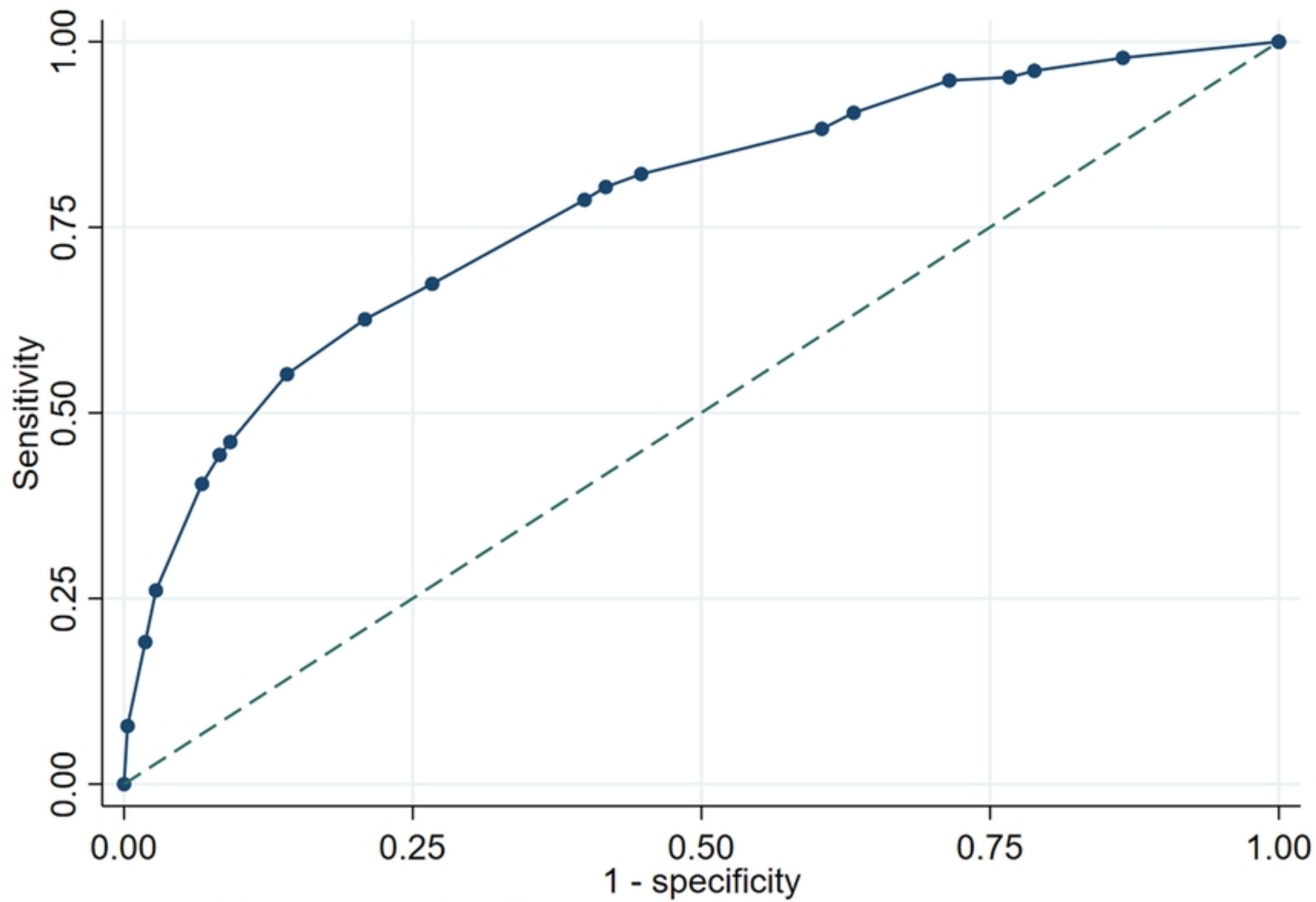


Figure 2



Area under ROC curve = 0.7792

Figure 3

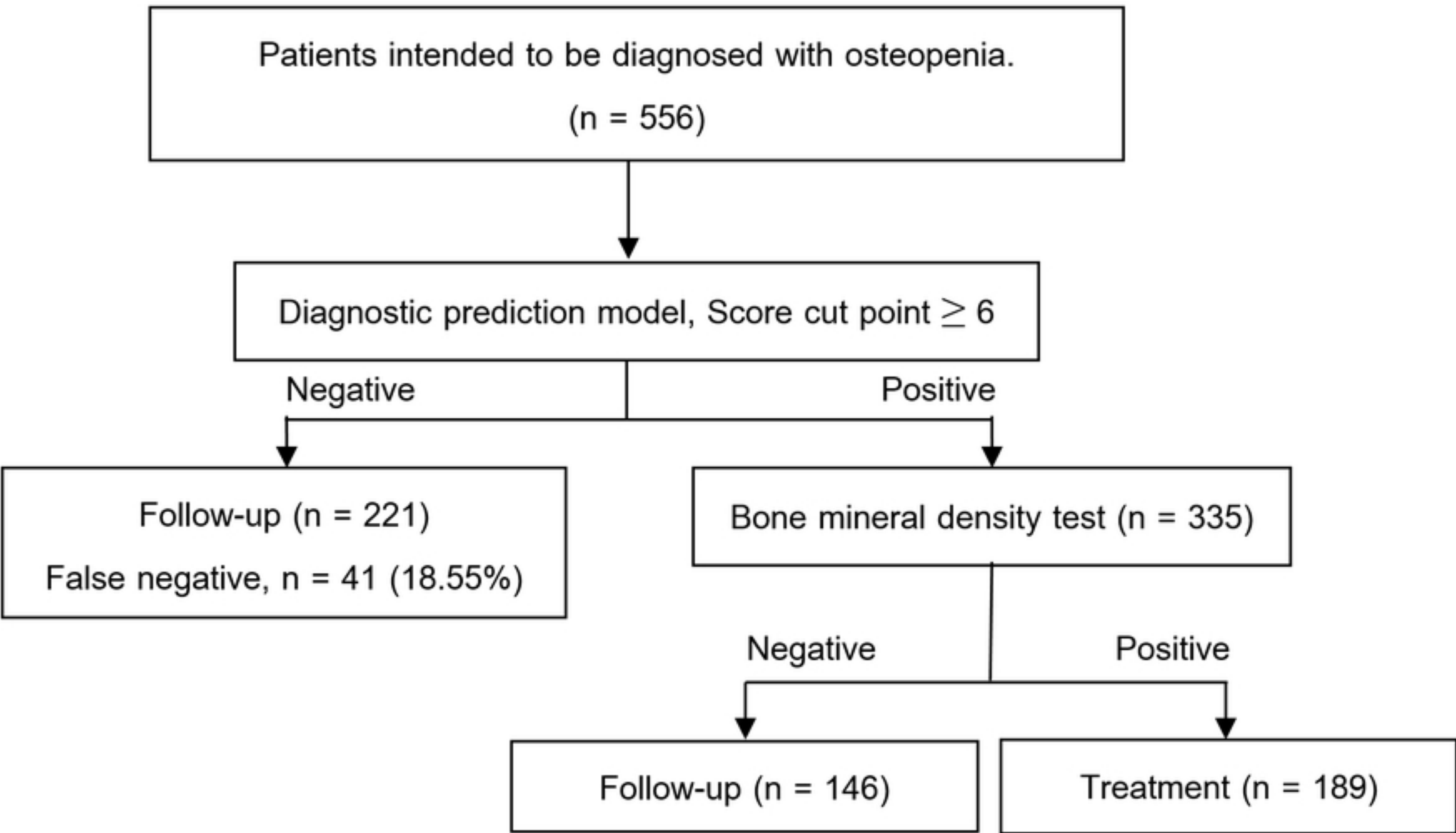


Figure 4