

1 Higher frequency of interstate over international transmission chains of SARS- 2 CoV-2 virus at the Rio Grande do Sul - Brazil state borders

3

4 Filipe Zimmer Dezordi^{1,2*}, José Valter Joaquim Silva Júnior^{3,4,5,6,7*}, Terimar Facin Ruoso^{8*}, Angela
5 Giovana Batista^{8,9}, Pedro Mesquita Fonseca⁸, Richard Steiner Salvato¹⁰, Tatiana Schäffer Gregianini¹⁰,
6 Thaísa Regina Rocha Lopes^{3,7}, Eduardo Furtado Flores³, Rudi Weiblen³, Patrícia Chaves Brites¹¹,
7 Mônica de Medeiros Silva¹², João Batista Teixeira da Rocha¹², Gustavo de Lima Barbosa¹³, Lais
8 Ceschini Machado¹, Alexandre Freitas da Silva^{1,2}, Marcelo Henrique Santos Paiva^{1,14}, Matheus
9 Filgueira Bezerra¹⁵, Tulio de Lima Campos², Tiago Gräf¹⁶, Daniel Angelo Sganzerla Graichen^{17&}, Elgion
10 Lucio da Silva Loreto^{12&}, Gabriel da Luz Wallau^{1,2,18&} on behalf of the Fiocruz Genomic Network

11 * Equal contribution
12 & Equal contribution

13 ¹Departamento de Entomologia, Instituto Aggeu Magalhães (IAM)-Fundação Oswaldo Cruz-FIOCRUZ, Recife
14 50670-420, Brazil

15 ²Núcleo de Bioinformática (NBI), Instituto Aggeu Magalhães (IAM), FIOCRUZ-Pernambuco, Recife, Pernambuco,
16 Brazil

17 ³Setor de Virologia, Departamento de Medicina Veterinária Preventiva, Universidade Federal de Santa Maria
18 (UFSM), 97105-900, Santa Maria, RS, Brazil

19 ⁴Setor de Virologia, Instituto Keizo Asami, Universidade Federal de Pernambuco, Pernambuco, Brazil. Zip Code:
20 50670-901;

21 ⁵Laboratório NB3 de Neuroimunologia, Universidade Federal de Santa Maria, Rio Grande do Sul, Brazil. Zip Code:
22 97105-900;

23 ⁶Departamento de Microbiologia e Parasitologia, Universidade Federal de Santa Maria, Rio Grande do Sul, Brazil.
24 Zip Code: 97105-900

25 ⁷ Programa de Pós-graduação em Medicina Veterinária, Universidade Federal de Santa Maria, Rio Grande do Sul,
26 Brazil. Zip Code: 97105-900

27 ⁸Campus Palmeira das Missões, Universidade Federal de Santa Maria. Palmeira das Missões, Rio Grande do Sul,
28 Brazil. Zip Code: 98300-000.

29 ⁹Life Sciences Institute, Universidade Federal de Juiz de Fora. Governador Valadares, Minas Gerais, Brazil. Zip
30 Code: 35010-180.

31 ¹⁰Centro Estadual de Vigilância em Saúde. Secretaria Estadual da Saúde do Rio Grande do Sul. Porto Alegre, Rio
32 Grande do Sul, Brazil. Zip Code: 90610-000.

33 ¹¹Hospital Universitário de Santa Maria (HUSM), Universidade Federal de Santa Maria (UFSM), Av. Roraima,
34 1000, 97105-900, Santa Maria, RS, Brazil

35 ¹²Departamento de Bioquímica e Biologia Molecular, Universidade Federal de Santa Maria (UFSM), Av. Roraima,
36 1000, 97105-900, Santa Maria, RS, Brazil

37 ¹³Núcleo de Plataformas Tecnológicas (NPT), Instituto Aggeu Magalhães (IAM), FIOCRUZ-Pernambuco, Recife,
38 Pernambuco, Brazil

39 ¹⁴Núcleo de Ciências da Vida, Universidade Federal de Pernambuco (UFPE), Centro Acadêmico do Agreste-
40 Rodovia BR-104, km 59-Nova Caruaru, Caruaru 55002-970, Brazil

NOTE: This preprint reports new research that has not been certified by peer review and should not be used to guide clinical practice.

41 ¹⁵Departamento de Microbiologia, Instituto Aggeu Magalhães (IAM), FIOCRUZ-Pernambuco, Recife, Pernambuco,
42 Brazil

43 ¹⁶Laboratório de Virologia Molecular, Instituto Carlos Chagas, Fundação Oswaldo Cruz, Curitiba, Paraná, Brazil

44 ¹⁷Departamento de Zootecnia e Ciências Biológicas, Universidade Federal de Santa Maria, Palmera das Missões,
45 Rio Grande do Sul, Brazil. Zip Code: 98300-000.

46 ¹⁸Department of Arbovirology, Bernhard Nocht Institute for Tropical Medicine, WHO Collaborating Center for
47 Arbovirus and Hemorrhagic Fever Reference and Research. National Reference Center for Tropical Infectious
48 Diseases. Bernhard-Nocht-Straße 74, 20359 Hamburg - Germany.

49

50 **Abstract**

51 Brazil's COVID-19 response has faced challenges due to the continuous emergence of
52 variants of concern (VOCs), emphasizing the need for ongoing genomic surveillance and
53 retrospective analyses of past epidemic waves. Rio Grande do Sul (RS), Brazil's southernmost
54 state, has crucial international borders and trades with Argentina and Uruguay, along with
55 significant domestic connections. The source and sink of transmission with both national and
56 international hubs raises questions about the RS role in the transmission of the virus, which
57 has not been fully explored. Nasopharyngeal samples from various municipalities in RS were
58 collected between June 2020 and July 2022. SARS-CoV-2 whole genome amplification and
59 sequencing were performed using high-throughput Illumina sequencing. Bioinformatics
60 analysis encompassed the development of scripts and tools to take into account
61 epidemiological information to reduce sequencing disparities bias among the
62 regions/countries, genome assembly, and large-scale phylogenetic reconstruction. Here, we
63 sequenced 1,480 SARS-CoV-2 genomes from RS, covering all major regions. Sequences
64 predominantly represented Gamma (April-June 2021) and Omicron (January-July 2022)
65 variants. Phylogenetic analysis revealed a regional pattern for transmission dynamics,
66 particularly with Southeast Brazil for Gamma, and a range of inter-regional connections for
67 Delta and Omicron within the country. On the other hand, international and cross-border
68 transmission with Argentina and Uruguay was rather limited. We evaluated the three VOCs
69 circulation over two years in RS using a new subsampling strategy based on the number of
70 cases in each state during the circulation of each VOC. In summary, the retrospective analysis
71 of genomic surveillance data demonstrated that virus transmission was less intense between
72 country borders than within the country. These findings suggest that while non-
73 pharmacological interventions were effective to mitigate transmission across international land
74 borders in RS, they were insufficient to contain transmission at the domestic level.

75 **1. Introduction**

76 The first cases of effective human-to-human transmission of SARS-CoV-2 were
77 identified in Wuhan, China, in December 2019 (1). Since then, this virus has spread globally
78 culminating in a pandemic declared on 11th March 2020 (2). As of February 2024, there have
79 been 676 million global cases and more than 6.8 million deaths (3) and Brazil registered more
80 than 37 million of the total cases and almost 700 thousand deaths in the same period (3).
81 These figures are a consequence of the high transmissibility of air-borne pathogens such as
82 the SARS-CoV-2 through symptomatic and asymptomatic patients and continuous
83 adaptations to the new human host (4–6). The rapid evolution of the SARS-CoV-2 under
84 changing evolutionary pressures associated with millions of infected patients (3) has resulted
85 in the emergence and spread of more transmissible and/or more immunological evasive
86 SARS-CoV-2 lineages around the globe that are dynamically classified as Variants of Interest
87 (VOIs) and Variants of Concern (VOCs) (7).

88 Besides the development of different vaccine technologies (8) and the success of
89 vaccine campaigns across the world, which culminated in a decrease in cases, particularly in
90 severe disease and hospitalizations (9–11), the SARS-CoV-2 is still circulating and evolving
91 into new lineages. These new lineages carry specific sets of immune escape mutations
92 allowing the reinfection of previously infected or vaccinated hosts (12–14). Since the start of
93 the pandemic, five major VOCs encompassing several lineages have originated and spread
94 across the globe. The first VOC identified was the Alpha lineage in September 2020 (15)
95 followed by Beta in October 2020 (16), Gamma in November 2020 (17), Delta in October but
96 spread globally in May 2021 (18), and Omicron in November 2021 (19), which is the single
97 VOC circulating nowadays, and now considered as a VOI (20), with several sublineages co-
98 circulating (20).

99 Knowledge about the spreading of different SARS-CoV-2 lineages is only possible due
100 to the efforts of genomic surveillance, an effort carried out by thousands of research groups
101 across the globe (21,22). In Brazil, due to its large geographic territory, several groups have
102 been characterizing the emergence and spreading of different SARS-CoV-2 lineages across
103 the country (17,23–27). Besides the efforts to perform genomic surveillance studies in Brazil,
104 the majority of Brazilian studies focus on the Southeast region - the most populous region,
105 and with the major number of cases - (25). Moreover, the studies focused on Rio Grande do
106 Sul were carried out at the beginning of the pandemic (28–30) or focused on specific cities
107 (31,32). Herein, we aimed to characterize the circulation of SARS-CoV-2 lineages during the
108 first two and a half years of the pandemic (up to July 2022) across Rio Grande do Sul state
109 state which have epidemiological links with samples from other Brazilian states, besides the
110 large land border of Rio Grande do Sul with Argentina and Uruguay.

111 We sequenced 1,480 genomes from samples collected from June 2020 to July 2022.
112 The genomes represent several lineages from Gamma, Delta, and Omicron VOCs as well as
113 non-VOI and non-VOC lineages. The samples represent different cities across the Rio Grande
114 do Sul. These findings are of particular importance to prioritize non-pharmacological
115 interventions at the interstate and national level during the following SARS-CoV-2 waves.

116

117 **2. Material and Methods**

118 Nasal and oropharyngeal specimens, previously identified as positive for SARS-CoV-
119 2, were obtained from the Universidade Federal de Santa Maria main campus and the
120 Palmeira das Missões Campus representing samples from 277 Rio Grande do Sul
121 municipalities mainly covering the Central and Northwest regions of the state during the period
122 from 23 June 2020 to 7 July 2022. Reverse Transcription Quantitative Polymerase Chain
123 Reaction (RT-qPCR) assays were conducted utilizing the Biomol OneStep Covid-19 Kit
124 (IBMP, Paraná, BR) and the Molecular SARS-CoV-2 Kit (Bio-manguinhos, Rio de Janeiro, RJ,
125 BR), strictly adhering to the specifications provided by the manufacturers. Specimens
126 exhibiting a Cycle Threshold (Ct) value below 25 were subsequently subjected to amplification
127 and sequencing processes, as delineated in (33,34).

128 **2.1. Viral Genetic Material Sequencing**

129 For this study, two distinct methodologies were employed to synthesize
130 complementary DNA (cDNA) and to amplify the SARS-CoV-2 genome. These included: the
131 short amplicon approach based on the ARTIC protocol (accessible at [https://github.com/artic-](https://github.com/artic-network/artic-ncov2019)
132 [network/artic-ncov2019](https://github.com/artic-network/artic-ncov2019)) (33); and the incorporation of three sets of primers within the
133 COVIDSeq protocol, following Naveca, et al., 2021 (35). After the generation of genome-wide
134 amplicons, samples were processed for sequencing employing either the Illumina DNA Prep
135 (Illumina, San Diego, CA, USA) or the COVIDSeq (Illumina, San Diego, CA, USA) library
136 preparation protocols, following the guidelines provided by the manufacturer. The sequencing
137 process was executed using the Illumina MiSeq system, specifically employing the MiSeq
138 Reagent Kit V3 for a paired-end 150 cycles flow cell. Ethical clearance for this study was
139 granted by CEP UFSM under the authorization number 52939821.5.0000.5346 and
140 47588621.7.1001.5346 and by CEP from Escola de Saúde Pública/SES-RS under the
141 authorization number CAAE: 67181123.1.0000.5312.

142 **2.2. Genome Assembly**

143 In this study, we used the ViralFlow v0.0.6 workflow (36). This workflow was designed
144 for efficient and accurate assembly of viral genomes. Briefly, raw sequence data were quality
145 filtered to remove reads (`--cut_front --cut_tail --qualified_quality_phred 20 -l 35 -f 35 -t 35 -F`
146 `35 -T 35`) with fastp tool (37). Subsequently, the cleaned reads were mapped with BWA (38)
147 against the Wuhan SARS-CoV-2 genome (NC_045512.2). The consensus genomes were
148 generated with the iVar tool (39), where a base is called to the consensus when it reaches at
149 least 5x of coverage depth; on multi-allele loci, alleles with higher frequency ($VAF \geq 0.51$)
150 are considered for the consensus genome. The assembly metrics and SARS-CoV-2 lineages
151 are defined using bamdst (40) and pangolin (41), respectively, both present in the ViralFlow
152 workflow. All samples with 70% or more of coverage breadth are included in the initial
153 phylogenetic analysis with MAPLE v0.3.1 (42) to detect if the lack of sequencing regions
154 results in long branches on phylogenetic trees.

155 **2.3. Subsampling Strategy**

156 In light of the extensive dataset of SARS-CoV-2 genomes available in the GISAID-
157 EpiCoV database (43), which encompasses millions of genomes globally (15,271,031
158 genomes in the collection date of this study), including hundreds of thousands from Brazil
159 (214,213 genomes), it became imperative to utilize a systematic subsampling strategy
160 informed by epidemiological data. To facilitate this, we developed an in-house R
161 (<https://www.r-project.org/>) script, named explore.R (see **Data Availability** for details), to
162 determine the appropriate number of genomes to subsample across various Brazilian regions
163 for Gamma, Delta, and Omicron. This script harnesses data from both the EpiCoV database
164 and covid19.org.br, collected on February 6, 2023, to assess and use the ratio of COVID-19
165 cases to estimate the proportion subsampling of the available genomes for each
166 aforementioned VOCs in specific periods.

167 To delineate the temporal and spatial distribution of the Gamma, Delta, and Omicron
168 variants within Brazil, we referred to existing literature to establish the onset of their circulation
169 in the country: Gamma in November 2020 (17), Delta in April 2021 (18), and Omicron in
170 November 2021 (19). Our study's scope was extended until August 2022, based on the date
171 of the most recent sample sequenced in our analysis.

172 To perform the subsampling process, we developed an in-house tool: the Gisaid
173 Subsampling Toolkit, or GIST. GIST processes a JSON file containing the count of genomes
174 from various Brazilian regions, derived from the output of the 'explore.R' script. It employs a
175 combination of Augur (44), BLAST (45), and MAFFT (46) for three distinct analyses (**Code**
176 **Availability** section for more details, **SupplementaryData1**). Briefly, in the first analysis, we

177 utilize Augur to sample genomes. This step involves the exclusion of genomes from non-
178 human hosts, those lacking a collection date, and sequences shorter than 28,400 bases,
179 approximately 95% of the SARS-CoV-2 Wuhan genome's coverage. The sampling is stratified
180 based on the number of genomes by state, further grouped by pango lineage, year, and
181 month. Following this initial sampling, the second phase of analysis enriches the dataset with
182 genetically similar genomes. This is achieved through a BLAST analysis filtering results
183 between 99% and 99.98% of identity with query coverage high scoring pairs (HSP) greater or
184 equal to 99.9%. In the final stage of analysis, we conduct a multiple sequence alignment using
185 MAFFT, employing parameters such as `--keeplength`, `--kimura 1`, and `--6merpair`, while
186 specifically masking the UTR regions.

187 **2.4. Phylogenetic Analysis**

188 Three initial trees - one for Gamma, Delta, and Omicron datasets - were reconstructed
189 using MAPLE v0.3.1 (42) to detect long branches. Genomes showing long branches
190 (**SupplementaryData2**) were removed from the original alignment. The edited alignments
191 were used in a maximum likelihood phylogenetic analysis with IQ-TREE2 v.2.2.0 (47), the best
192 substitution model was defined using ModelFinder (48) implemented on IQ-TREE2 and the
193 SH-aLRT test (49) to branch support. The phylogenetic trees were annotated in iTOL v.6 (50)
194 to identify clades of specific lineages with branch support higher than 0.8 (aLRT) with at least
195 4 genomes from Rio Grande do Sul. The identified clades were split into different datasets,
196 one for each clade lineage.

197 **2.5. Temporal Estimation**

198 To estimate the tMRCA of clades identified in phylogenetic analysis each lineage
199 dataset was used in an analysis flow which encompasses: A first phylogenetic tree
200 reconstruction with IQ-TREE2 v.2.2.0; A TempEst v.1.5.3 (51) analysis to identify the age root
201 correlation; removal of outliers with in-house R scripts, that receives the output of TempEst
202 and identify outlier sequences based on the thresholds of 1.5x of Interquartile Range IQR of
203 all samples in the dataset; A second tree reconstruction with IQ-TREE2 v.2.2.0 using the
204 dataset alignments without outliers; And finally a temporal analysis with TreeTime v.0.11 (52).
205

206 **3. Results**

207 **3.1. Sequencing Results**

208 During the period and for the purpose of the present study, 1,480 genomes were
209 sequenced and deposited on EpiCoV - GISAID database (**SupplementaryData3**). The

210 samples contain representatives of most parts of the North, Center, and West of the Rio
211 Grande do Sul state (<https://microreact.org/project/2utyqQKoA7zDkYHEuzvyTG-sarsufsmiac>
212 [en](#)), and encompass approximately 30% of all genomes submitted for the state (1,480 from
213 5,065 genomes) and deposited on GISAID in the period of the study (**SupplementaryData3**).
214 The submitted consensus genomes from our group represent samples that meet one of the
215 following criteria: 90% or more of genome coverage breadth (horizontal coverage) or 70% or
216 more genome coverage breadth and that do not belong to clades with long branches on initial
217 MAPLE phylogenetic analysis. The samples are majorly composed of Gamma lineages and
218 sublineages during the period from April to June 2021 (**Figure 1**), and Omicron lineages and
219 sublineages during the period of January to July 2022, which is in line with the general
220 numbers presented on EpiCoV - GISAID (**Figure 2**). Besides the analysis of this study is
221 focused on SARS-CoV-2 samples sequenced in Rio Grande do Sul, we noticed similar
222 patterns of lineage frequencies sequenced in other regions of Brazil (**Figure 2**). The most
223 prevalent lineages for each analyzed VOC on Rio Grande do Sul were P.1, P.1.14, P.1.2,
224 P.1.4 and P.1.7 for Gamma; AY.43, AY.99.2, AY.99.1, AY.101, AY.34.1 and AY.46.3 for Delta;
225 and the most prevalent lineages BA.1, BA.1.1, BA.2, BA.5, BA.5.2, BA.4 and BQ for Omicron
226 (**Figure 2**).

227 **Figure 1:** Number of samples sequenced in this study per month. **Omicron genomes not related to BA, BE, BQ, and DL lineages.

228 **3.2. SARS-Cov-2 clades circulating on Rio Grande do Sul**

229 The subsampling strategy with explorer.R and GIST resulted in three major datasets:
230 One for each VOC Gamma, Delta, and Omicron, encompassing the most frequent lineages
231 on Rio Grande do Sul during the period of the study as well as outgroups with ancestors of
232 respective lineages (**SupplementaryData4**). Each dataset corresponds to Brazilian genomes
233 plus genomes from Latin America (particularly Paraguay, Argentina and Uruguay) and other
234 regions of the globe, recovered from the GIST BLAST analysis (**SupplementaryData5**).

235 The initial phylogeny of Gamma corresponds to 4,545 genomes (**Figure 3A**), where 6
236 clades were identified (**Figure 3B**). One clade (P.1.14-I) represents sequences from P.1.14,
237 two clades (P.1-I~II) represent sequences of P.1 lineage, and three (P.1.2-I~III) of P.1.2
238 lineage. The Gamma analysis shows samples from Rio Grande do Sul clustering with
239 sequences from the Southeast region of Brazil: The P.1.14-I and P.1-II clades encompass
240 basal sequences from Minas Gerais (MG) and São Paulo (SP) states, the P.1-I clade presents
241 basal Rio Grande do Sul samples clustered with South America samples from Argentina and
242 Paraguay, and the clades P.1-II and P.1.2-III have well-defined sister clades from Uruguay
243 and São Paulo, respectively.

244 The initial phylogeny of Delta corresponds to 4,358 genomes (**Figure 4A**) where 6
245 clades were identified (**Figure 4B**). Four clades (AY.99.2-I~IV) represent sequences from
246 AY.99.2 lineage, and 2 clades (AY.101-I~II) represent sequences from AY.101 lineage. The
247 Delta analysis shows different clustering of Rio Grande do Sul (RS) and sampled from other
248 Brazilian regions. The AY.99.2-I clade shows a possible transmission from Rio Grande do Sul
249 to Minas Gerais, and the AY.99.2-IV from Minas Gerais to Rio Grande do Sul. The clade
250 AY.101-I shows a route of transmission from Rio Grande do Sul to the Central-West region of
251 Brazil, as well as from Rio Grande do Sul to Rio de Janeiro (RJ), and the AY.101-II clade from
252 Rio Grande do Sul to São Paulo state.

253 The omicron phylogenetic analysis was performed with 4,639 genomes (**Figure 5A**)
254 representing 5 distinct clades (**Figure 5B**) with Rio Grande do Sul samples from BA.1.1,
255 BA.5.2, and BA.2 lineages. Different from Delta and Gamma analysis, where several clades
256 clustered with other clades from the South-East region - mainly from São Paulo, Rio de
257 Janeiro, and Minas Gerais states - the Omicron clades are mostly composed of Rio Grande
258 do Sul samples, except for BA.5.2-I clade, that clustered with samples from the Goias state
259 (GO) - Central-West region.

260 **Figure 2.** Prevalence of SARS-CoV-2 lineages and number of genomes per period, based on EpiCoV GISAID data. **A.** Specific
261 lineages and variants in Brazil. **B.** Specific lineages and variants in Rio Grande do Sul. **C.** Gama lineages in Brazil. **D.** Gama
262 lineages in Rio Grande do Sul. **E.** Delta lineages in Brazil. **F.** Delta lineages in Rio Grande do Sul. **G.** Omicron lineages in Brazil.
263 **H.** Omicron lineages in Rio Grande do Sul. **Omicron genomes not related to BA, BE, BQ, and DL lineage.

264
265 **Figure 3.** Maximum likelihood analysis of Gamma variant lineages, Branch support was accessed by the aLRT branch support.
266 Tip colors are based on Brazilian regions and the 5 countries that presented the highest number of sequences recovered via
267 blast. **A.** Complete tree. **B.** Well-supported subclades. Bold sample lanes represent genomes sequenced in this study. **
268 Collapsed clade that represents all sequences after P.1-I clade. Complete figure with branch support and uncollapsed clade is
269 available on **SupplementaryData6**.

270
271 **Figure 4.** Maximum likelihood analysis of Delta variant lineages, numbers within with squares are aLRT branch support of
272 respective clades. Colorful tips based on Brazilian regions and the 5 countries that presented the highest number of sequences
273 recovered via blast. **A.** Complete tree. **B.** Well supported subclades including Rio Grande do Sul samples. Bold sample lanes
274 represent genomes sequenced in this study. Complete figure with branch support and uncollapsed clade is available on
275 **SupplementaryData7**.

276
277 **Figure 5.** Maximum likelihood analysis of lineages of the Omicron variant, aLRT branch support. Colorful tips based on Brazilian
278 regions and the 5 countries that presented the highest number of sequences recovered via blast. **A.** Complete tree. **B.** Subclades.
279 Bold sample lanes represent genomes sequenced in this study. Complete figure with branch support and uncollapsed clade is
280 available on **SupplementaryData8**.

281 **3.3. Temporal estimation of 7 lineages circulating on Rio Grande do Sul**

282 To identify the possible emergence and spreading timing of the lineages associated
283 with the identified clades within the state, we performed temporal analysis using treetime for
284 7 datasets (**Table 1**) which represents the clades identified with Rio Grande do Sul samples
285 in the evolutionary analysis.

286 **Table 1.** Datasets and tMRCA inferred by treetime tool

lineage	number of samples	tMRCA
P.1.2	482	2021-01-12 ~ 2021.03
P.1.14	540	2020-12-15 ~ 2020.95
AY.101	1030	2021-03-22 ~ 2021.22
AY.99.2	1953	2021-03-26 ~ 2021.23
BA.1.1	1467	2021-10-09 ~ 2021.77
BA.5.2	384	2022-02-11 ~ 2022.11
BA.2	1530	2021-12-09 ~ 2021.93

287

288 Considering the tMRCA from treetime as the start time of lineages circulation, and the
289 last collection date of samples (**Supplementary Data3**) as the end time of circulation, the
290 Gamma P.1.2 and P.1.14 lineages were estimated to have occurred on Rio Grande do Sul
291 between mid-December 2020 to late June 2021 for P.1.14 and mid-January 2020 to late June
292 2021 for P.1.2.

293 For Delta lineages, the AY.101 was estimated to have circulated between mid-March
294 2021 to late November 2021 and the AY.99.2 from late March 2021 to early December 2021,
295 and for Omicron lineages, the BA.1.1 started circulating in the state in mid-August 2021, the
296 BA.2 in mid-December 2021 and the BA.5.2 in mid-February 2022 and both of them are still
297 circulating during the time of the data collection of this study: early July 2022.

298 **4. Discussion**

299 The SARS-CoV-2 virus is the latest example of a zoonotic pathogen that has made its
300 way to effective human-to-human transmission resulting in the COVID-19 pandemic. Despite
301 numerous efforts to implement large-scale genomic surveillance around the world, there
302 remain underrepresented populations and areas where laboratory and genomic surveillance
303 is scarce (21). In Brazil, SARS-CoV-2 genomic surveillance was established across the
304 country, but as expected, most of the data comes from the most populated cities on the Atlantic
305 coast and large capital cities from states without sea borders where there were more available
306 diagnostic and research laboratories. That is the case of the Rio Grande do Sul state where
307 there is a higher concentration of diagnostic and genomic information from the capital city
308 Porto Alegre and surrounding municipalities. In this study, we generated 1,480 genomes
309 mainly from the central and Northeast regions of the state to augment the genomic information
310 from the Rio Grande do Sul state. Then we subsampled the main lineages circulating in the
311 state to test hypotheses regarding the sink and source role of the state to other Brazilian states

312 and border countries Argentina and Uruguay. We found that inter-state transmission was
313 much more important in SARS-CoV-2 lineages transmission spread from and to the Rio
314 Grande do Sul state than inter-country transmission.

315 The extremely large number of SARS-CoV-2 genomes currently available (the global
316 dataset used in this study included 15,271,032 genomes) makes phylogenetic inferences
317 timing and computationally consuming (53). Current approaches to handle such a massive
318 amount of data are focused on lineages subsampling taking into consideration lineages
319 presence in different locations and prevalence (54). The Augur software (44), implements
320 some sub-sampling algorithms but does not consider the epidemiological estimates such as
321 the number of cases per region. Considering the global disparities of genome sequencing
322 throughout different geographic regions (21) we implemented a sampling strategy based on
323 the number of cases and genomes by region per time using the in-house script explore.R
324 which allowed us to more precisely sample genomes following the increase and decrease in
325 cases and remove the sampling biases present in the global and local datasets.

326 Our global subsampled phylogenetic reconstruction of Gamma and Delta clades
327 showed that the United States of America and the Central-West region of Brazil were placed
328 in a basal position near the root suggesting that these regions were the source point to spread
329 these lineages to Brazil. Previous evidence has shown the origins of each analyzed VOC,
330 such as Gamma with P.1 lineage in the North region of Brazil (17), Delta with B.1.617.2 lineage
331 in India (18), and Omicron with B.1.1.529 lineage in South Africa (19). But this is the first
332 large-scale analysis showing that the Delta lineage was probably introduced from the USA to
333 Brazil and that the Central-West region of Brazil acted as an important hub for the spreading
334 of the Omicron lineage to other major regions of the country.

335 Based on the augmented dataset of SARS-CoV-2 genomes from Rio Grande do Sul
336 including genomes of previously undersampled regions (Center and Northwestern) we next
337 evaluated if the main transmission chains with Rio Grande do Sul occurred with other Brazilian
338 states or with border countries Argentina and Uruguay. Previous studies characterized the
339 spreading of B.1.1.28 and B.1.1.33 lineages from Rio Grande do Sul to Uruguay (55). Besides
340 the large terrestrial frontier between Rio Grande do Sul and Uruguay and Argentina, our
341 results showed only one probable migration event of the P.1 lineage from Rio Grande do Sul
342 to Uruguay (**Figure 3B**, clade P.1-II). The clades of P.1.2 lineage showed samples from Rio
343 Grande do Sul as ancestors from samples of Southeast, in line with the evidence showing the
344 likely origin of this sub-lineage in the state (31). The P.1.14-I clade, showed an ancestral origin
345 of P.1.14 samples from Southeast towards Rio Grande do Sul in line with the findings shown
346 by Ferrareze, et al. 2024 (56).

347 There are few studies about Delta lineages on Rio Grande do Sul, one of the reasons
348 may be related to the low number of samples sequenced in this period (**Figure 2B**). Our results
349 showed that two main Delta lineages circulated on Rio Grande do Sul: the AY.99.2 and the
350 AY.101, corroborating the results from Castro et al, 2023 (57) and Arantes et al, 2022 (27)
351 that addressed the early emergence of Delta in Brazil. The circulation of those lineages
352 appears to have occurred from July 2021 to January 2022, with the tMRCA of those lineages
353 estimated from late March 2021, which is in line with the estimations of Arante et al, 2023 for
354 AY.101 (27). The clades of AY.99.2 showed samples from Rio Grande do Sul as ancestors
355 (**Figure 4B** Clade AY.99.2-I) with spreading to Minas Gerais (Southeast region), while the
356 clade AY.99.2-IV showed the opposite, which indicates a spreading of AY.99.2 between those
357 2 states. The analysis of AY.101 clades also revealed Rio Grande do Sul samples as
358 ancestors and a putative migration to Southeast states: Rio de Janeiro (AY.101-I clade) and
359 São Paulo (AY.101-II clade).

360 Our results showed that ancestral samples of AY.99.2 from the Rio Grande do Sul
361 state and posterior spreading to the Southeast were in line with other studies (56). On the
362 other hand, the same study identified the introduction of AY.101 lineage in the Southeast
363 region in early January 2021, and the posterior introduction in Rio Grande do Sul in July 2021
364 which diverged from our findings of an introduction from Rio Grande do Sul to the Southeast
365 region. The divergence about the AY.101 phylogeographic inferences may be the result of
366 different subsampling strategies, where Ferraze et al, 2024 (56) used the Augur subsampling
367 strategy based on Pango lineage, and we used the Augur inside GIST performing a
368 subsampling based on normalized genomes by state cases and then the sampling by Pango
369 Lineage and collection date.

370 The Omicron analysis showed three main lineages circulating on Rio Grande do Sul
371 during the period of the study: BA.1.1, BA.5.2, and BA.2 which is in line with other Brazilian
372 states (**Figure 2G, H**). During the first quarter of 2022, the BA.1 and BA.1.1 lineages were the
373 most prevalent, as described previously (58) but were further replaced by BA.2, BA.5, and BQ
374 from June to July 2022 (59). There is no phylogenetic information in the literature about the
375 relation of Omicron lineages from Rio Grande do Sul and other locations, our results showed
376 that excluding the BA.5.2-I clade (**Figure 5B**), the omicron clades are majorly formed by
377 samples from Rio Grande do Sul. The BA.5.2-I clade showed a close relation between Rio
378 Grande do Sul samples and Goias samples (Central West Brazilian region).

379 Despite the standardization of sampling methods, sequencing disparities (21) may still
380 generate sampling biases that can affect genomic surveillance studies, here we identified both
381 local sampling disparities on the Rio Grande do Sul (by state regions and periods, see

382 <https://microreact.org/project/2utyqQKoA7zDkYHEuzvyTG-sarsufsmIacen>) and in countries
383 that have terrestrial borders with the Southern region of Brazil (Paraguay, Argentina, and
384 Uruguay, see **Supplementary Data 9**). These results may have biased our inferences, but on
385 the other hand, this was the most comprehensive study posed to augment the Rio Grande do
386 Sul dataset in underrepresented areas as well as to employ a case incidence aware
387 subsampling scheme that minimized as much as possible the impact of these biases as much
388 as possible.

389 Overall, our findings suggest that despite the large land border and intense
390 international transportation of goods between Rio Grande do Sul, Argentina, and Uruguay few
391 examples of cross-border transmission occurred, likely due to more effective non-
392 pharmacological interventions applied at countries' borders and that the major sink and source
393 transmission pathways of SARS-CoV-2 with the Rio Grande do Sul state occurred between
394 Brazilian states from the Southeast and Central West part of the country.

395

396 **5. Conclusion**

397 Overall, our study underscores the importance of robust sampling strategies and
398 comprehensive genomic surveillance efforts to accurately track the spatio-temporal spread of
399 SARS-CoV-2 lineages. By applying a sampling strategy based on the number of genomes
400 and epidemiological information, we described the most prevalent clades of Gamma, Delta,
401 and Omicron lineages that circulated in Rio Grande do Sul Brazil, during the period from June
402 2020 to July 2022 and showed that the large majority of transmission events took place
403 between Brazilian states of the South-East and Central-West regions than between countries
404 sharing land borders with Rio Grande do Sul.

405

406 **Acknowledgments**

407 AGB and TFR thank FAPERGS (grant ARD #21/2551-0000703-6) for financial support. G.L.W
408 is supported by the Conselho Nacional de Desenvolvimento Científico e Tecnológico (CNPq)
409 through their productivity grant (307209/2023-7).

410

411 **References**

412 1. A new coronavirus associated with human respiratory disease in China | Nature [Internet].

- 413 [cited 2024 Apr 22]. Available from: <https://www.nature.com/articles/s41586-020-2008-3>
- 414 2. WHO Director-General's opening remarks at the media briefing on COVID-19 - 11 March
415 2020 [Internet]. [cited 2024 Apr 22]. Available from: [https://www.who.int/director-](https://www.who.int/director-general/speeches/detail/who-director-general-s-opening-remarks-at-the-media-briefing-on-covid-19---11-march-2020)
416 [general/speeches/detail/who-director-general-s-opening-remarks-at-the-media-briefing-](https://www.who.int/director-general/speeches/detail/who-director-general-s-opening-remarks-at-the-media-briefing-on-covid-19---11-march-2020)
417 [on-covid-19---11-march-2020](https://www.who.int/director-general/speeches/detail/who-director-general-s-opening-remarks-at-the-media-briefing-on-covid-19---11-march-2020)
- 418 3. Johns Hopkins Coronavirus Resource Center [Internet]. [cited 2024 Apr 22]. COVID-19
419 Map. Available from: <https://coronavirus.jhu.edu/map.html>
- 420 4. Yanes-Lane M, Winters N, Fregonese F, Bastos M, Perlman-Arrow S, Campbell JR, et al.
421 Proportion of asymptomatic infection among COVID-19 positive persons and their
422 transmission potential: A systematic review and meta-analysis. *PLOS ONE*. 2020 Nov
423 3;15(11):e0241536.
- 424 5. Hu Z, Song C, Xu C, Jin G, Chen Y, Xu X, et al. Clinical characteristics of 24 asymptomatic
425 infections with COVID-19 screened among close contacts in Nanjing, China. *Sci China*
426 *Life Sci*. 2020 May 1;63(5):706–11.
- 427 6. Harrison AG, Lin T, Wang P. Mechanisms of SARS-CoV-2 Transmission and
428 Pathogenesis. *Trends Immunol*. 2020 Dec 1;41(12):1100–15.
- 429 7. CDC. Centers for Disease Control and Prevention. 2020 [cited 2024 Apr 22]. Coronavirus
430 Disease 2019 (COVID-19). Available from: [https://www.cdc.gov/coronavirus/2019-](https://www.cdc.gov/coronavirus/2019-ncov/variants/variant-classifications.html)
431 [ncov/variants/variant-classifications.html](https://www.cdc.gov/coronavirus/2019-ncov/variants/variant-classifications.html)
- 432 8. Vaccines – COVID19 Vaccine Tracker [Internet]. [cited 2024 Apr 22]. Available from:
433 <https://covid19.trackvaccines.org/vaccines/#approved>
- 434 9. Mohammed I, Nauman A, Paul P, Ganesan S, Chen KH, Jalil SMS, et al. The efficacy and
435 effectiveness of the COVID-19 vaccines in reducing infection, severity, hospitalization, and
436 mortality: a systematic review. *Hum Vaccines Immunother* [Internet]. 2022 Jan 31 [cited
437 2024 Apr 22]; Available from:
438 <https://www.tandfonline.com/doi/abs/10.1080/21645515.2022.2027160>
- 439 10. Thompson Mark G., Stenehjem Edward, Grannis Shaun, Ball Sarah W., Naleway Allison
440 L., Ong Toan C., et al. Effectiveness of Covid-19 Vaccines in Ambulatory and Inpatient
441 Care Settings. *N Engl J Med*. 2021 Oct 6;385(15):1355–71.
- 442 11. Anand P, Stahel VP. The safety of Covid-19 mRNA vaccines: a review. *Patient Saf Surg*.
443 2021 May 1;15(1):20.
- 444 12. Dejnirattisai W, Zhou D, Supasa P, Liu C, Mentzer AJ, Ginn HM, et al. Antibody evasion
445 by the P.1 strain of SARS-CoV-2. *Cell*. 2021 May 27;184(11):2939-2954.e9.
- 446 13. Hoffmann M, Arora P, Groß R, Seidel A, Hörnich BF, Hahn AS, et al. SARS-CoV-2 variants
447 B.1.351 and P.1 escape from neutralizing antibodies. *Cell*. 2021 Apr 29;184(9):2384-
448 2393.e12.
- 449 14. Ai J, Zhang H, Zhang Y, Lin K, Zhang Y, Wu J, et al. Omicron variant showed lower
450 neutralizing sensitivity than other SARS-CoV-2 variants to immune sera elicited by
451 vaccines after boost. *Emerg Microbes Infect*. 2022 Dec 31;11(1):337–43.
- 452 15. Hill V, Du Plessis L, Peacock TP, Aggarwal D, Colquhoun R, Carabelli AM, et al. The
453 origins and molecular evolution of SARS-CoV-2 lineage B.1.1.7 in the UK. *Virus Evol*.
454 2022 Jul 1;8(2):veac080.
- 455 16. Tegally H, Wilkinson E, Giovanetti M, Iranzadeh A, Fonseca V, Giandhari J, et al.

- 456 Detection of a SARS-CoV-2 variant of concern in South Africa. *Nature*. 2021
457 Apr;592(7854):438–43.
- 458 17. Naveca FG, Nascimento V, de Souza VC, Corado A de L, Nascimento F, Silva G, et al.
459 COVID-19 in Amazonas, Brazil, was driven by the persistence of endemic lineages and
460 P.1 emergence. *Nat Med*. 2021 Jul;27(7):1230–8.
- 461 18. McCrone JT, Hill V, Bajaj S, Pena RE, Lambert BC, Inward R, et al. Context-specific
462 emergence and growth of the SARS-CoV-2 Delta variant. *Nature*. 2022
463 Oct;610(7930):154–60.
- 464 19. Viana R, Moyo S, Amoako DG, Tegally H, Scheepers C, Althaus CL, et al. Rapid epidemic
465 expansion of the SARS-CoV-2 Omicron variant in southern Africa. *Nature*. 2022
466 Mar;603(7902):679–86.
- 467 20. Tracking SARS-CoV-2 variants [Internet]. [cited 2024 Apr 22]. Available from:
468 <https://www.who.int/activities/tracking-SARS-CoV-2-variants>
- 469 21. Brito AF, Semenova E, Dudas G, Hassler GW, Kalinich CC, Kraemer MUG, et al. Global
470 disparities in SARS-CoV-2 genomic surveillance. *Nat Commun*. 2022 Nov 16;13(1):7003.
- 471 22. Robishaw JD, Alter SM, Solano JJ, Shih RD, DeMets DL, Maki DG, et al. Genomic
472 surveillance to combat COVID-19: challenges and opportunities. *Lancet Microbe*. 2021
473 Sep 1;2(9):e481–4.
- 474 23. Faria NR, Mellan TA, Whittaker C, Claro IM, Candido D da S, Mishra S, et al. Genomics
475 and epidemiology of the P.1 SARS-CoV-2 lineage in Manaus, Brazil. *Science*. 2021 May
476 21;372(6544):815–21.
- 477 24. Giovanetti M, Fonseca V, Wilkinson E, Tegally H, San EJ, Althaus CL, et al. Replacement
478 of the Gamma by the Delta variant in Brazil: Impact of lineage displacement on the ongoing
479 pandemic. *Virus Evol*. 2022 Jan 1;8(1):veac024.
- 480 25. Giovanetti M, Slavov SN, Fonseca V, Wilkinson E, Tegally H, Patané JSL, et al. Genomic
481 epidemiology of the SARS-CoV-2 epidemic in Brazil. *Nat Microbiol*. 2022 Sep;7(9):1490–
482 500.
- 483 26. Nonaka CKV, Franco MM, Gräf T, Barcia CA de L, Mendonça RN de Á, Sousa KAF de,
484 et al. Genomic Evidence of SARS-CoV-2 Reinfection Involving E484K Spike Mutation,
485 Brazil - Volume 27, Number 5—May 2021 - Emerging Infectious Diseases journal - CDC.
486 [cited 2024 Apr 22]; Available from: [https://wwwnc.cdc.gov/eid/article/27/5/21-
487 0191_article](https://wwwnc.cdc.gov/eid/article/27/5/21-0191_article)
- 488 27. Arantes I, Gomes Naveca F, Gräf T, COVID-19 Fiocruz Genomic Surveillance Network,
489 Miyajima F, Faoro H, et al. Emergence and Spread of the SARS-CoV-2 Variant of Concern
490 Delta across Different Brazilian Regions. *Microbiol Spectr*. 2022 Aug 24;10(5):e02641-21.
- 491 28. Mayer A de M, Gröhs Ferrareze PA, de Oliveira LFV, Gregianini TS, Neves CLAM,
492 Caldana GD, et al. Genomic characterization and molecular evolution of SARS-CoV-2 in
493 Rio Grande do Sul State, Brazil. *Virology*. 2023 May;582:1–11.
- 494 29. Martins AF, Zavascki AP, Wink PL, Volpato FCZ, Monteiro FL, Rosset C, et al. Detection
495 of SARS-CoV-2 lineage P.1 in patients from a region with exponentially increasing
496 hospitalisation rate, February 2021, Rio Grande do Sul, Southern Brazil. *Eurosurveillance*.
497 2021 Mar 25;26(12):2100276.
- 498 30. Francisco Jr R da S, Benites LF, Lamarca AP, de Almeida LGP, Hansen AW, Gularte JS,
499 et al. Pervasive transmission of E484K and emergence of VUI-NP13L with evidence of

- 500 SARS-CoV-2 co-infection events by two different lineages in Rio Grande do Sul, Brazil.
501 *Virus Res.* 2021 Apr 15;296:198345.
- 502 31. Franceschi VB, Caldana GD, Perin C, Horn A, Peter C, Cybis GB, et al. Predominance of
503 the SARS-CoV-2 Lineage P.1 and Its Sublineage P.1.2 in Patients from the Metropolitan
504 Region of Porto Alegre, Southern Brazil in March 2021. *Pathogens.* 2021 Aug;10(8):988.
- 505 32. Franceschi VB, Caldana GD, de Menezes Mayer A, Cybis GB, Neves CAM, Ferrareze
506 PAG, et al. Genomic epidemiology of SARS-CoV-2 in Esteio, Rio Grande do Sul, Brazil.
507 *BMC Genomics.* 2021 May 20;22(1):371.
- 508 33. Quick J. nCoV-2019 sequencing protocol. 2020 Jan 22 [cited 2024 Apr 22]; Available from:
509 <https://www.protocols.io/view/ncov-2019-sequencing-protocol-bbmuik6w>
- 510 34. Itokawa K, Sekizuka T, Hashino M, Tanaka R, Kuroda M. Disentangling primer interactions
511 improves SARS-CoV-2 genome sequencing by multiplex tiling PCR. *PLOS ONE.* 2020
512 Sep 18;15(9):e0239403.
- 513 35. Naveca FG, Nascimento V, Souza V, Corado A de L, Nascimento F, Silva G, et al. Spread
514 of Gamma (P.1) Sub-Lineages Carrying Spike Mutations Close to the Furin Cleavage Site
515 and Deletions in the N-Terminal Domain Drives Ongoing Transmission of SARS-CoV-2 in
516 Amazonas, Brazil. *Microbiol Spectr.* 2022 Feb 23;10(1):e02366-21.
- 517 36. Dezordi FZ, Neto AM da S, Campos T de L, Jeronimo PMC, Aksenon CF, Almeida SP, et
518 al. ViralFlow: A Versatile Automated Workflow for SARS-CoV-2 Genome Assembly,
519 Lineage Assignment, Mutations and Intrahost Variant Detection. *Viruses.* 2022
520 Feb;14(2):217.
- 521 37. Chen S, Zhou Y, Chen Y, Gu J. fastp: an ultra-fast all-in-one FASTQ preprocessor.
522 *Bioinformatics.* 2018 Sep 1;34(17):i884–90.
- 523 38. Li H, Durbin R. Fast and accurate short read alignment with Burrows–Wheeler transform.
524 *Bioinformatics.* 2009 Jul 15;25(14):1754–60.
- 525 39. Grubaugh ND, Gangavarapu K, Quick J, Matteson NL, De Jesus JG, Main BJ, et al. An
526 amplicon-based sequencing framework for accurately measuring intrahost virus diversity
527 using PrimalSeq and iVar. *Genome Biol.* 2019 Jan 8;20(1):8.
- 528 40. shiquan. shiquan/bamdst [Internet]. 2024 [cited 2024 Apr 22]. Available from:
529 <https://github.com/shiquan/bamdst>
- 530 41. O’Toole Á, Scher E, Underwood A, Jackson B, Hill V, McCrone JT, et al. Assignment of
531 epidemiological lineages in an emerging pandemic using the pangolin tool. *Virus Evol.*
532 2021;7(2):veab064.
- 533 42. De Maio N, Kalaghatgi P, Turakhia Y, Corbett-Detig R, Minh BQ, Goldman N. Maximum
534 likelihood pandemic-scale phylogenetics. *Nat Genet.* 2023 May;55(5):746–52.
- 535 43. Khare S, Gurry C, Freitas L, Schultz MB, Bach G, Diallo A, et al. GISAID’s Role in
536 Pandemic Response. *China CDC Wkly.* 2021 Dec 3;3(49):1049–51.
- 537 44. Huddleston J, Hadfield J, Sibley TR, Lee J, Fay K, Ilcisin M, et al. Augur: a bioinformatics
538 toolkit for phylogenetic analyses of human pathogens. *J Open Source Softw.* 2021 Jan
539 7;6(57):2906.
- 540 45. Altschul SF, Gish W, Miller W, Myers EW, Lipman DJ. Basic local alignment search tool.
541 *J Mol Biol.* 1990 Oct 5;215(3):403–10.

- 542 46. Katoh K, Standley DM. MAFFT Multiple Sequence Alignment Software Version 7:
543 Improvements in Performance and Usability. *Mol Biol Evol.* 2013 Apr 1;30(4):772–80.
- 544 47. Minh BQ, Schmidt HA, Chernomor O, Schrempf D, Woodhams MD, von Haeseler A, et al.
545 IQ-TREE 2: New Models and Efficient Methods for Phylogenetic Inference in the Genomic
546 Era. *Mol Biol Evol.* 2020 May 1;37(5):1530–4.
- 547 48. Kalyaanamoorthy S, Minh BQ, Wong TKF, von Haeseler A, Jermini LS. ModelFinder: fast
548 model selection for accurate phylogenetic estimates. *Nat Methods.* 2017 Jun;14(6):587–
549 9.
- 550 49. Guindon S, Dufayard JF, Lefort V, Anisimova M, Hordijk W, Gascuel O. New Algorithms
551 and Methods to Estimate Maximum-Likelihood Phylogenies: Assessing the Performance
552 of PhyML 3.0. *Syst Biol.* 2010 May 1;59(3):307–21.
- 553 50. Letunic I, Bork P. Interactive Tree Of Life (iTOL): an online tool for phylogenetic tree
554 display and annotation. *Bioinforma Oxf Engl.* 2007 Jan 1;23(1):127–8.
- 555 51. Rambaut A, Lam TT, Max Carvalho L, Pybus OG. Exploring the temporal structure of
556 heterochronous sequences using TempEst (formerly Path-O-Gen). *Virus Evol.* 2016 Jan
557 1;2(1):vew007.
- 558 52. Sagulenko P, Puller V, Neher RA. TreeTime: Maximum-likelihood phylodynamic analysis.
559 *Virus Evol.* 2018 Jan 1;4(1):vex042.
- 560 53. Morel B, Barbera P, Czech L, Bettisworth B, Hübner L, Lutteropp S, et al. Phylogenetic
561 Analysis of SARS-CoV-2 Data Is Difficult. *Mol Biol Evol.* 2021 May 4;38(5):1777–91.
- 562 54. Hill V, Ruis C, Bajaj S, Pybus OG, Kraemer MUG. Progress and challenges in virus
563 genomic epidemiology. *Trends Parasitol.* 2021 Dec 1;37(12):1038–49.
- 564 55. Mir D, Rego N, Resende PC, Tort F, Fernández-Calero T, Noya V, et al. Recurrent
565 Dissemination of SARS-CoV-2 Through the Uruguayan–Brazilian Border. *Front Microbiol*
566 [Internet]. 2021 May 28 [cited 2024 Apr 22];12. Available from:
567 <https://www.frontiersin.org/journals/microbiology/articles/10.3389/fmicb.2021.653986/full>
- 568 56. Ferrareze PAG, Cybis GB, de Oliveira LFB, Zimerman RA, Schiavon DEB, Peter C, et al.
569 Intense P.1 (Gamma) diversification followed by rapid Delta substitution in Southern
570 Brazil: a SARS-CoV-2 genomic epidemiology study. *Microbes Infect.* 2024 Jan
571 1;26(1):105216.
- 572 57. Y Castro TR, Piccoli BC, Vieira AA, Casarin BC, Tessele LF, Salvato RS, et al.
573 Introduction, Dispersal, and Predominance of SARS-CoV-2 Delta Variant in Rio Grande
574 do Sul, Brazil: A Retrospective Analysis. *Microorganisms.* 2023 Dec 7;11(12):2938.
- 575 58. da Silva MS, Gularte JS, Filippi M, Demoliner M, Girardi V, Mosena ACS, et al. Genomic
576 and epidemiologic surveillance of SARS-CoV-2 in Southern Brazil and identification of a
577 new Omicron-L452R sublineage. *Virus Res.* 2022 Nov;321:198907.
- 578 59. Rhoden J, Hoffmann AT, Stein JF, da Silva MS, Gularte JS, Filippi M, et al. Diversity of
579 Omicron sublineages and clinical characteristics in hospitalized patients in the
580 southernmost state of Brazil. *BMC Infect Dis.* 2024 Feb 13;24(1):193.

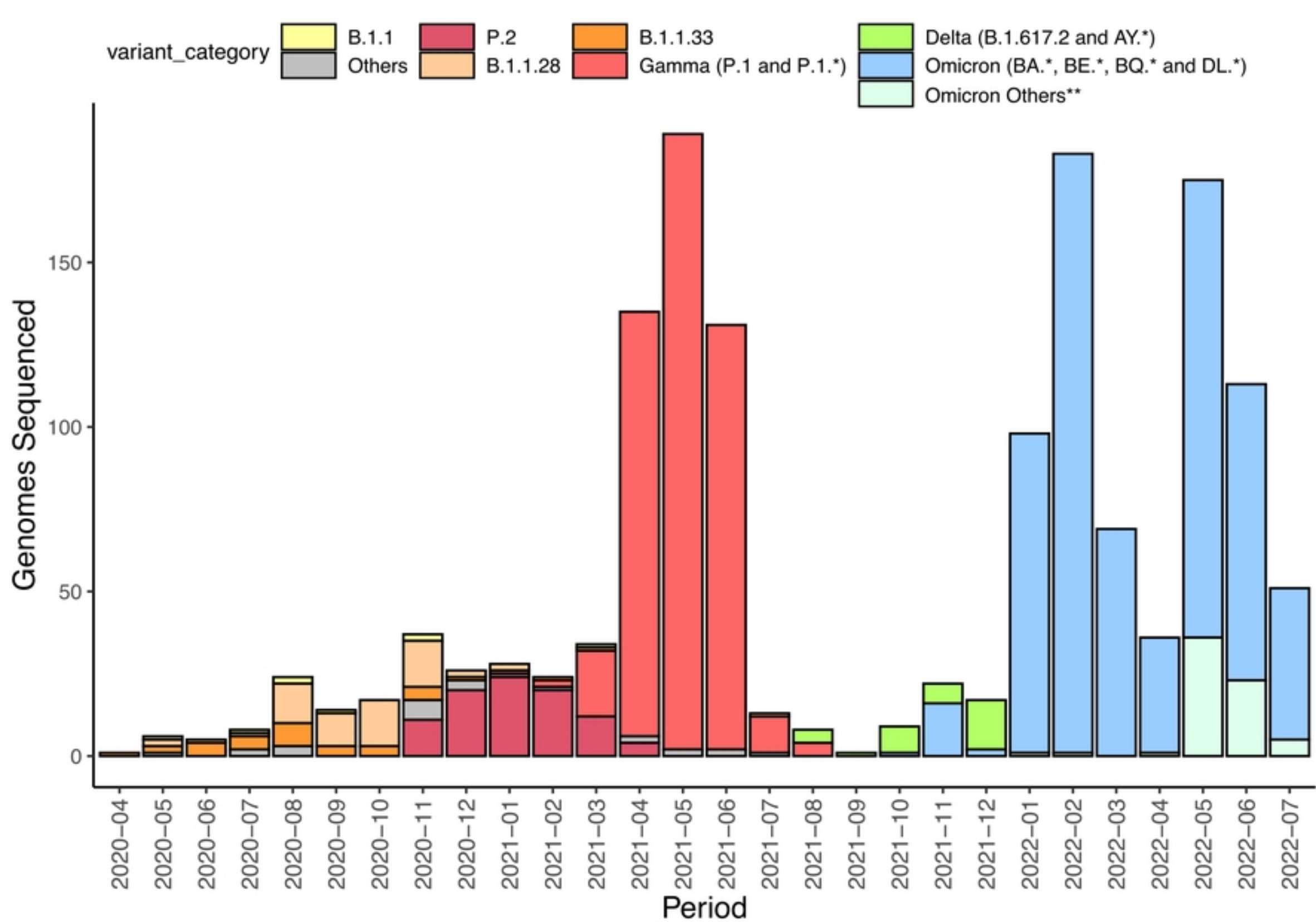


Figure 1

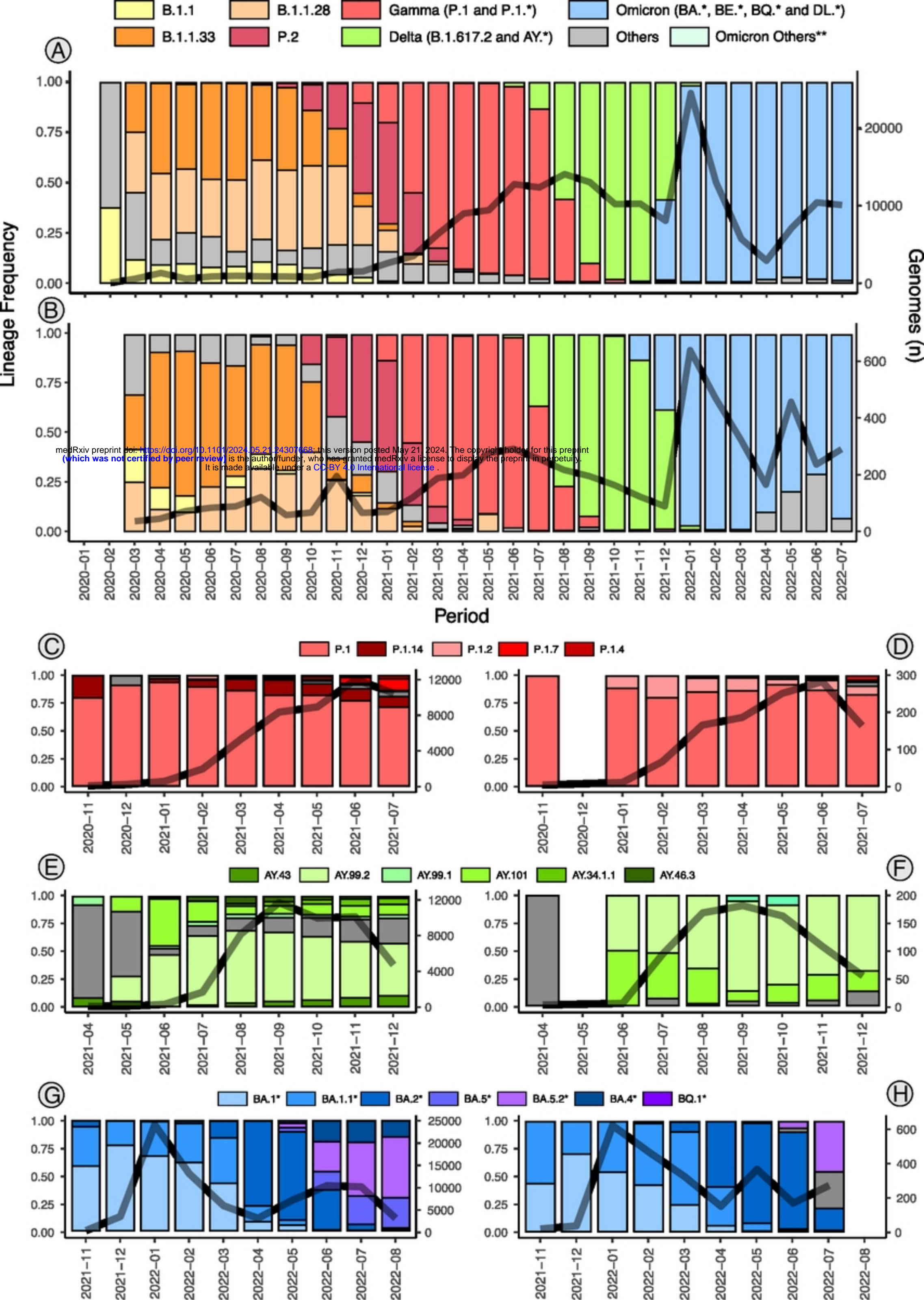
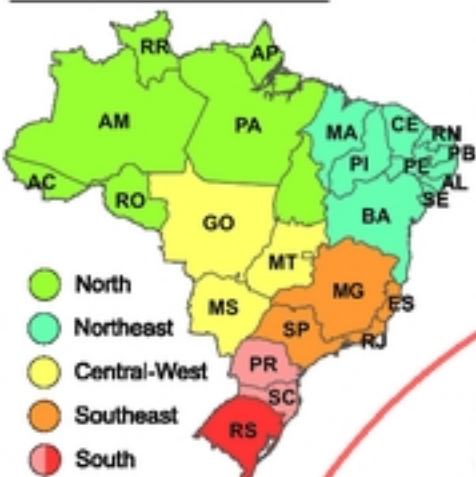


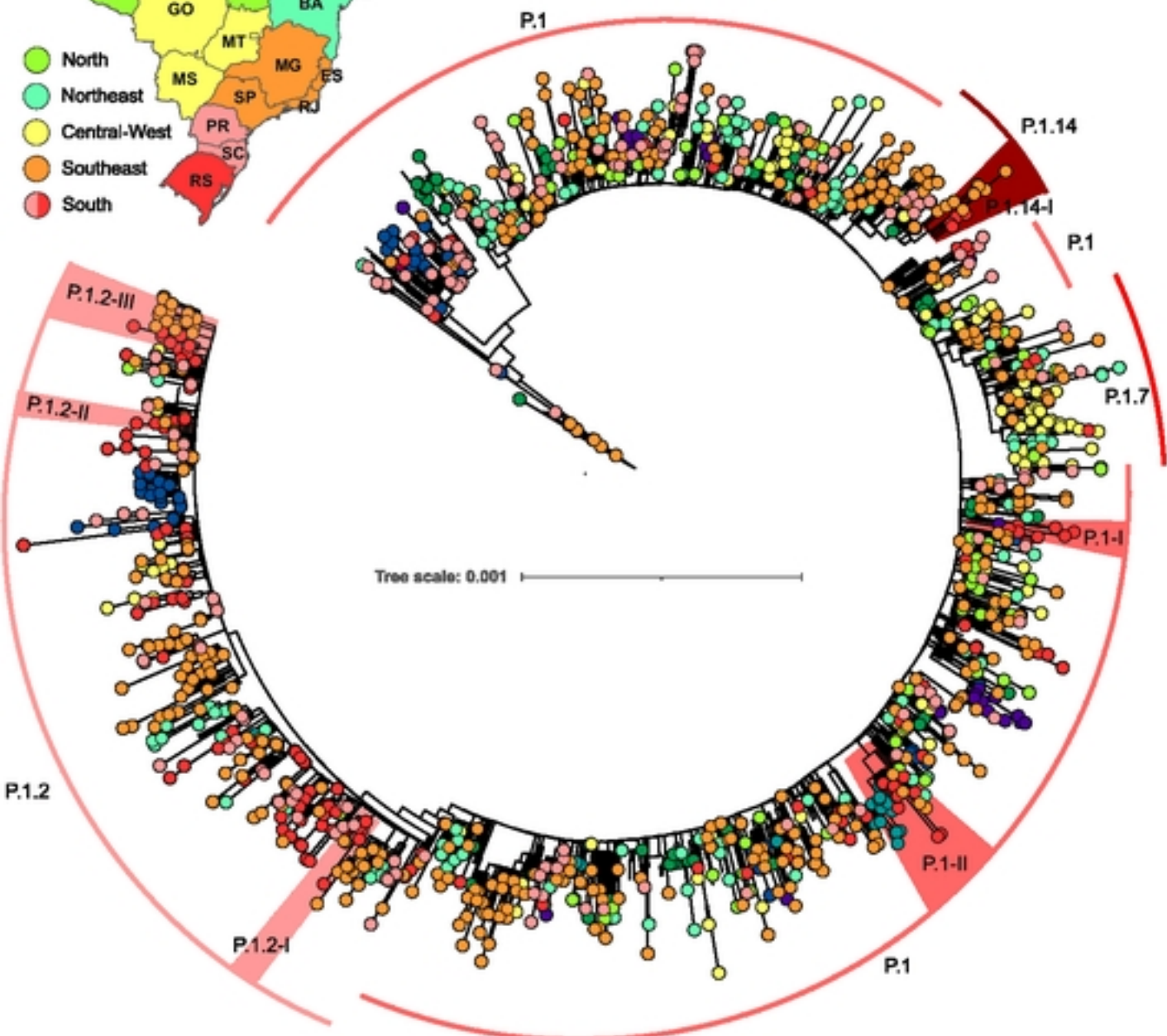
Figure 2

A

Brazilian Regions Tip Colors

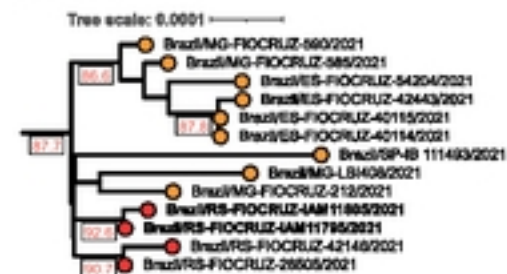


Countries Tip Colors

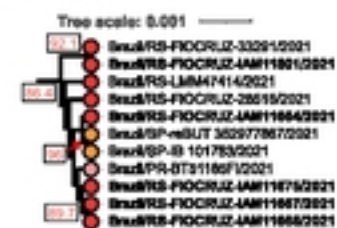


B

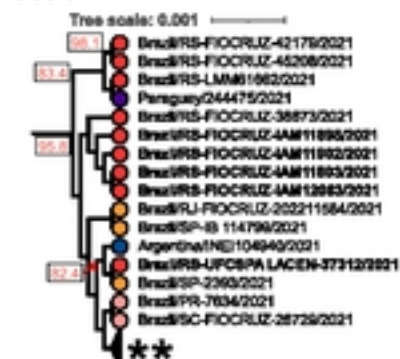
P.1-14-I



P.1.2-I



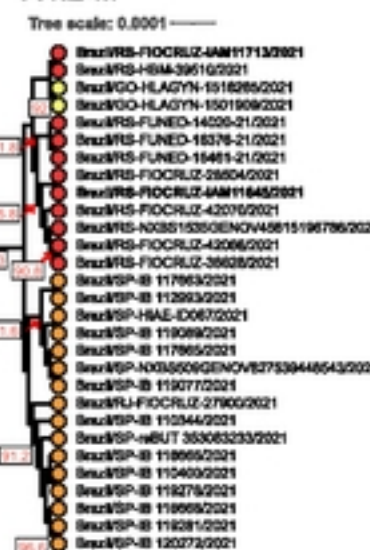
P.1-I



P.1.2-II



P.1.2-III



P.1-II

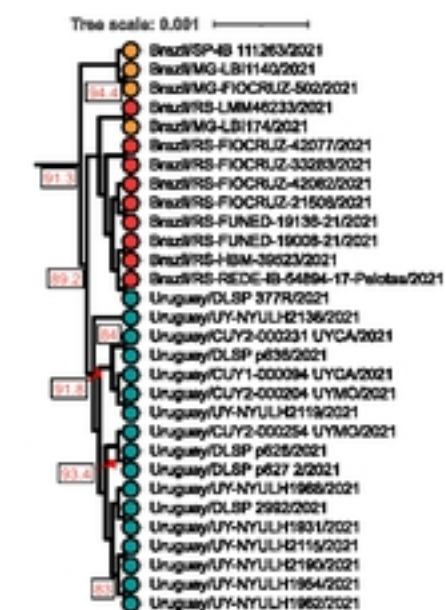
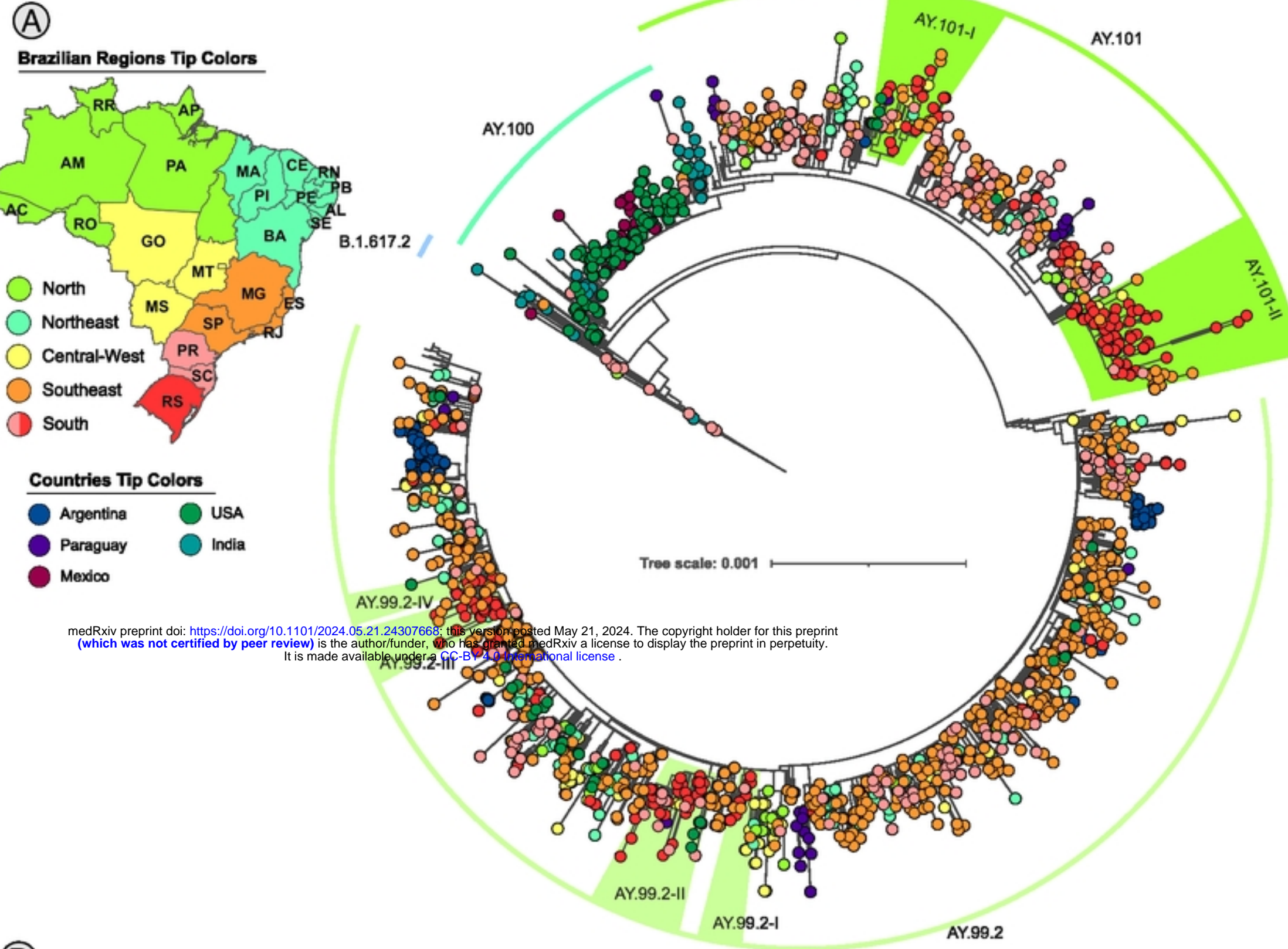


Figure 3



medRxiv preprint doi: <https://doi.org/10.1101/2024.05.21.24307668>; this version posted May 21, 2024. The copyright holder for this preprint (which was not certified by peer review) is the author/funder, who has granted medRxiv a license to display the preprint in perpetuity. It is made available under a [CC-BY 4.0 International license](https://creativecommons.org/licenses/by/4.0/).

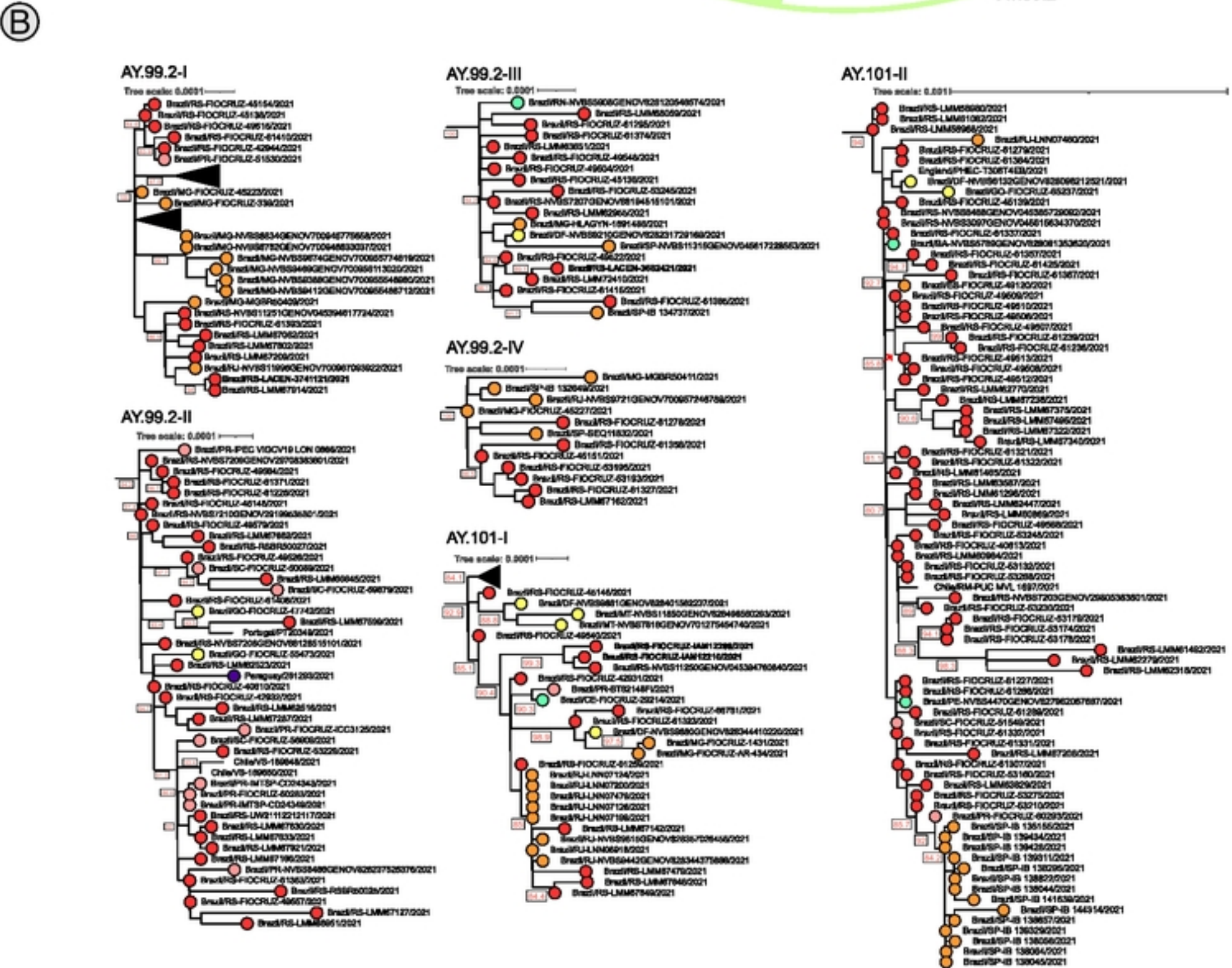
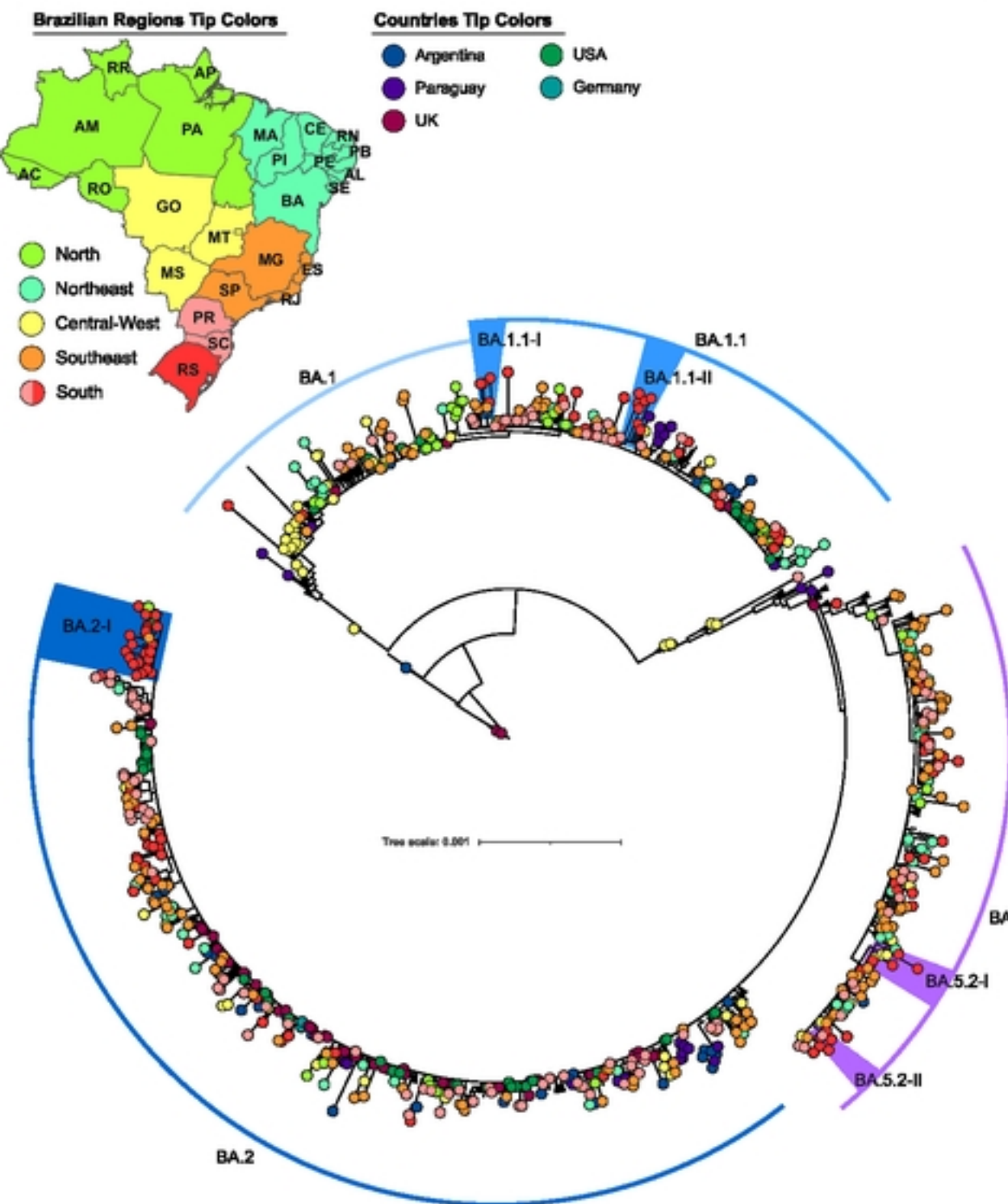


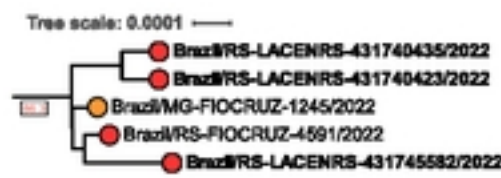
Figure 4

A

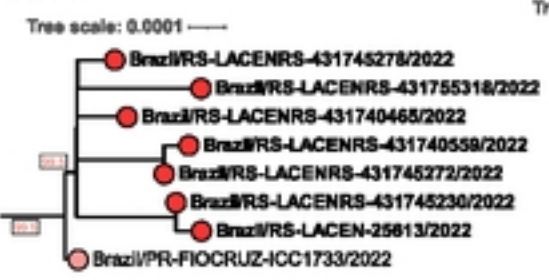


B

BA.1.1-



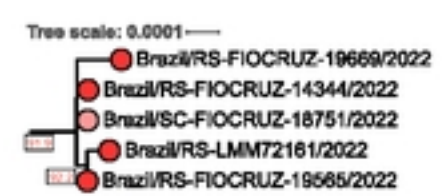
BA.1.1-I



BA.5.2-I



BA.5.2-II



BA.2-I

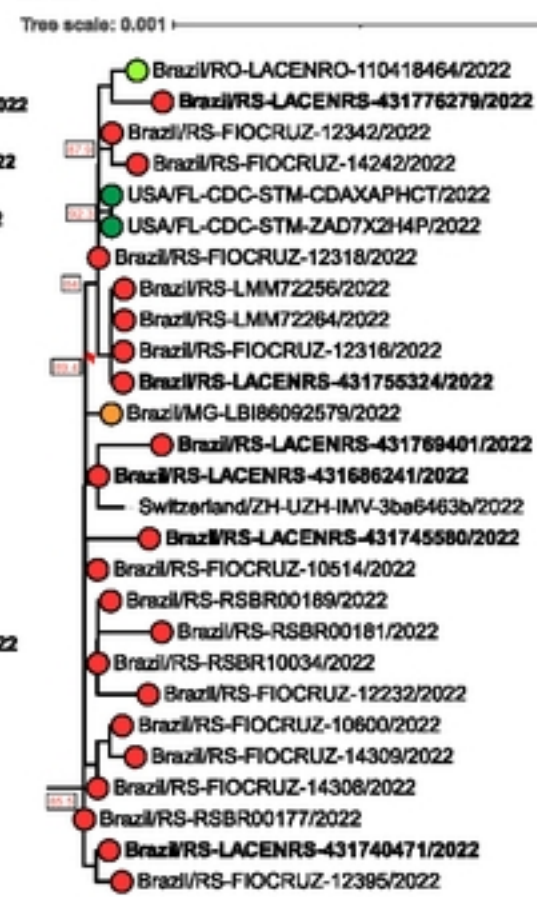


Figure 5