

## Closing the gap in race-based inequities for seasonal influenza hospitalizations: a modeling study.

Erin Stafford<sup>1,2</sup>, Dobromir Dimitrov<sup>1,3</sup>, Susan Brown Trinidad<sup>4</sup>, and Laura Matrajt<sup>1,3</sup>

<sup>1</sup>Department of Applied Mathematics, University of Washington, Seattle, WA, USA

<sup>2</sup>Department of Public Health and Clinical Medicine, Umeå University, Umeå, SE

<sup>3</sup>Vaccine and Infectious Disease Division, Fred Hutchinson Cancer Center, Seattle, WA, USA

<sup>4</sup>Department of Bioethics and Humanities, University of Washington, Seattle, WA, USA

### ARTICLE HISTORY

Compiled May 20, 2024

### ABSTRACT

Seasonal influenza hospitalizations pose a considerable burden in the United States, with BIPOC (Black, Indigenous, and other People of Color) communities being disproportionately affected. To study these disparities, we fit an age- and race-stratified agent-based model of influenza transmission to demographic and hospitalization data. We tested 5 equity-promoting strategies targeting different aspects of inequity: equalizing (i) vaccination rates, (ii) comorbidities, or (iii) work-risk distributions, (iv) reducing work contacts, or (v) a combination of equalizing both vaccination rates and comorbidities and reducing work contacts. Our analysis suggests that strategies reducing work contacts or equalizing vaccination rates would result in a more equitable distribution of symptomatic infections, with a substantial reduction in the number of symptomatic infections, with up to 17% fewer symptomatic infections in marginalized adults aged 18-49. Reducing comorbidities resulted in significant decreases in hospitalizations, with a reduction of over 40% in hospitalizations in marginalized groups. Notably, these interventions resulted in better outcomes across all age and race groups, not only those prioritized by the interventions.

## 1. Introduction

According to the Centers for Disease Control and Prevention (CDC), approximately 8% of Americans are infected with seasonal influenza each year [1]. The burden of seasonal influenza in the United States (US) varies widely yearly, with 360,000 hospitalizations and 21,000 deaths estimated for the 2022-23 season, which was fairly typical [2]. Not all Americans, however, face the same risk of infection or severe outcomes. Age is known to play a large role in determining susceptibility to infection and symptomatic infection. Children (aged 0-17) are about twice as likely to experience symptomatic influenza each season when compared to older adults (aged 65 and older) [1]. Also, young children (aged 0-4) and older adults (aged 65 and older) are more likely to experience severe outcomes than any other age group [3]. Age, however, is not the only factor that leads to differences in influenza outcomes. Significant racial and ethnic inequities also exist in seasonal influenza outcomes in the US, where the BIPOC (Black, Indigenous, and other People of Color) population faces a greater burden of exposure to infection and less access to prevention and treatment, resulting in higher age-adjusted rates of hospitalization and ICU admission [3-6].

Disparities in disease outcomes between racial and ethnic groups are due to a variety of complex factors. Social determinants of health (SDOH), defined as “the conditions in the environments where people are born, live, learn, work, play, worship, and age that affect a wide range of health, functioning, and quality-of-life outcomes and risks” contribute to observed disparities

**NOTE: This preprint reports new research that has not been certified by peer review and should not be used to guide clinical practice.**

CONTACT

[7]. SDOH that affect influenza outcomes include socioeconomic status, household structure, access to healthcare, education, and occupation [8, 9]. Systemic inequities also lead to higher rates of underlying medical conditions [10] which may contribute to worse influenza outcomes. Furthermore, existing racial and ethnic disparities in vaccine uptake exacerbate differences in the rates of severe influenza outcomes. Differences in vaccine uptake across populations might be due to a complex mix of factors, including mistrust in the healthcare system, lack of transportation or childcare, inability to take time off or to pay for the vaccine or the copay [11–14]. BIPOC populations are therefore more frequently exposed to influenza, more susceptible to infection, more likely to develop symptomatic disease, and more likely to progress to hospitalization or death [15, 16].

In this paper, we constructed an agent-based mathematical model of influenza transmission that is structured to investigate the racial and ethnic inequities in influenza outcomes. We use this model to understand and quantify the contribution of different social and structural factors in observed inequities in influenza hospitalizations. Our results can help craft optimal mitigation strategies by prioritizing populations with higher rates of comorbidities or by modifying contact structure. Further, we test five equity-promoting interventions aimed at reducing either structural inequities (represented by different levels of exposure based on race and ethnicity at the work place) or health-related inequities (represented by different levels of comorbidities and/or susceptibility to infection). Projecting the effects of equity-promoting interventions into realistic synthetic populations may help inform policy decisions aimed at increasing equity and while increasing the social and economic and benefit. Our analysis may be useful in guiding equity-promoting policies for influenza and other respiratory infectious diseases.

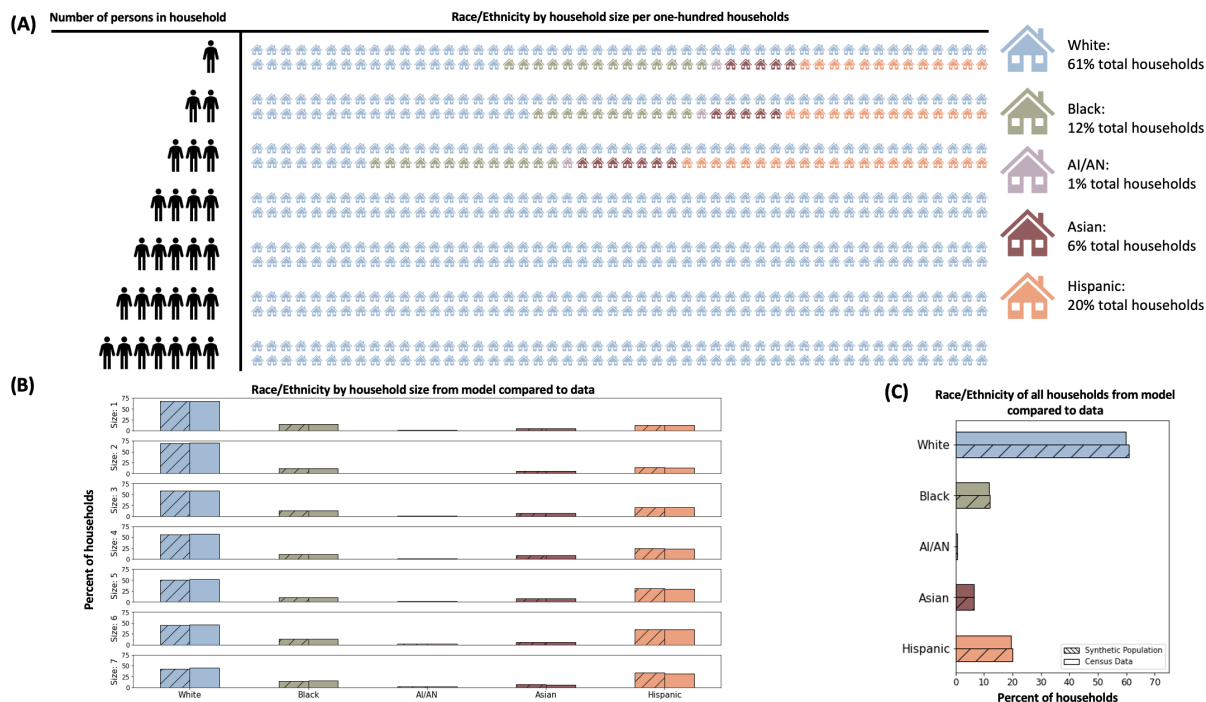
## 2. Methods

To study racial inequities in influenza outcomes, we constructed an agent-based model of influenza transmission adapted from COVASIM (COVID-19 Agent-based Simulator) [17, 18].

Individuals in the population are represented in our model by agents who interact with each other through a contact network. Influenza transmission occurs when agents in the network contact each other. At the beginning of a simulation (representing the beginning of an influenza season), most agents in the network are susceptible. Upon exposure, susceptible individuals can become infected, but are not immediately infectious. Once infectious, individuals are considered either asymptomatic (they can infect others but they have no symptoms) or presymptomatic. Presymptomatic individuals develop mild symptoms and can either recover or progress to severe or critical disease. In our model, children are assumed to be more likely to develop symptoms [19, 20]. Severe cases are those individuals who require hospitalization, and critical cases are those who are admitted to the ICU. Critical cases can either recover or die. In our model, children are assumed to be more likely to develop symptoms [19, 20]. The probability that an individual becomes symptomatic, and has mild, severe, or critical symptoms depends on both age and race/ethnicity. Transition times between these states are sampled from a log-normal distribution with mean times given in Table 1 in the Supplementary Information. A full list of disease parameters used in the model is given in Table 1 in the Supplementary Information.

Our contact network was adapted from a previously developed network model, SynthPops [21], to include both age-specific and race-and-ethnicity specific contact patterns in household, school, workplace, and community settings. SynthPops constructs synthetic networks that are calibrated to data such as age distributions, household sizes, employment rates, workplace sizes, school enrollment rates, school sizes, etc. In addition, we calibrated our network to US-based data to incorporate differences by race and ethnicity as described in the following sections.

A more detailed description of the base models, COVASIM and SynthPops, is given by Kerr et al. [17] and Mistry et al. [21].



**Figure 1.:** Racial and ethnic distributions of households. Figure (A) shows the racial distribution of households of each size from the model output. Figures (B) and (C) compare the model output with US Census data for the racial distribution of households by size and overall, respectively.

## 2.1. Incorporating racial and ethnic differences in the model

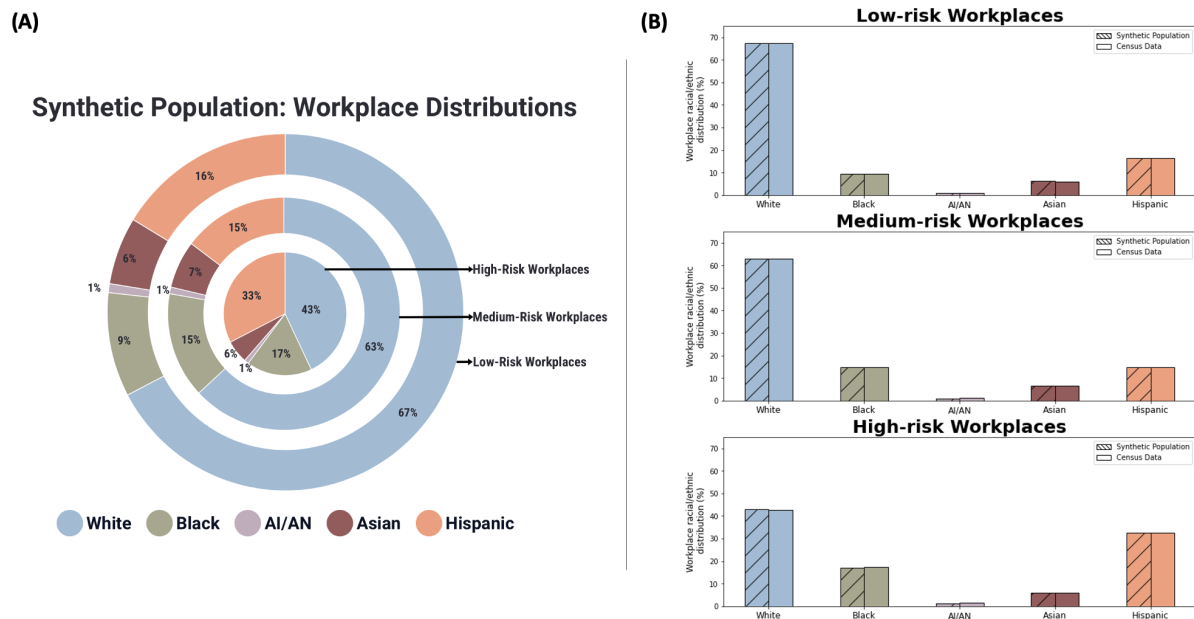
Using the CDC race and ethnicity definitions [22], we included five categories defining racial and ethnic groups (referred below as race groups) in our model: non-Hispanic white persons, non-Hispanic Black persons, non-Hispanic Asian persons, non-Hispanic American Indian or Alaska Native (AI/AN) persons, and Hispanic or Latino persons.

### *Household stratification by race group:*

Individuals were assigned to a given race group during household creation as follows: After generating households based on given household-size and age distributions mimicking the US household distribution [23, 24], we assigned a race group to each household using a probability distribution based on US Census data on household size by race and ethnicity [23] (Figure 1). It is important to note that this method does not capture interracial households. The age and race distributions of households calibrated in the model are in agreement with Census data (Figure 1).

### *Work stratification by race group:*

We used US-based workplace data [25, 26] to stratify workplaces and work distribution by race group. To do this, we first create each workplace with a size determined according to a distribution of workplaces sizes from US Census data [27]. We used the workplace size as a proxy to determine the level of infection risk at the workplace, divided into three categories: low-, medium-, or high- risk environment. We considered low-risk occupations to be non-frontline work and assumed that those in low-risk occupations have the fewest work contacts. Medium-risk and high-risk occupations were considered to be higher-income and lower-income frontline work, respectively. Those in medium-risk occupations have more work contacts than those in low-risk occupations, but fewer than those in high-risk occupations. Workplaces with at most 50 workers are deemed to be low risk, those with between 50 and 100 workers to be medium risk, and those with more than 100 workers to be high risk. We assigned working individuals



**Figure 2.:** Racial and ethnic distributions of workplaces. Figure 2(A) shows the workplace composition for the synthetic population. Figure 2(B) shows the fit of our model workplace distribution to the data for each of the three risk categories.

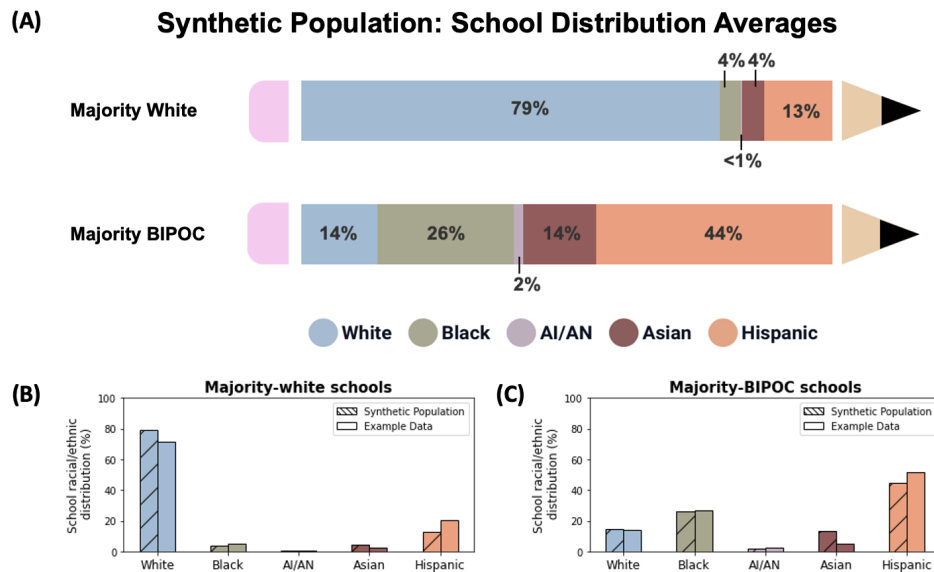
(determined from age-stratified employment rates) to workplaces based on racial and ethnic distributions for both the total workforce [25] and low-income, high-income, and non-frontline work [26]. Figure 2(A) shows the workplace composition for the synthetic population. Figure 2(B) shows the fit of our model workplace distribution to the data.

#### *School stratification by race group:*

We assign students to schools, which include pre-schools through university, based on school racial-composition data [28–30]. Because schools composition varies greatly by region, we consider two types of schools: majority-white schools and schools that are racially diverse. We adapt examples of these two types of schools from [28] to reflect the general US population using US Census data [29, 30] and use them as probability distributions for assigning students to schools. To create a new school, we first draw an age and race from probability distributions gathered from Census data. The age determines the school type (pre-school, elementary school, middle school, high school, or university), and the race determines the racial distribution of the school (majority-white if white, and racially diverse, otherwise). We use school size distributions to determine the size of the school, and we assign students based on the race-stratified probability distributions. Figure 3 shows the average school compositions for our simulated population.

#### *Influenza outcomes stratification by race group:*

To capture differences between racial groups in influenza outcomes, we informed transition probabilities from developing symptomatic infection through hospitalization, ICU admission to recovery or death from available clinical data[3]. Since we do not have age and race stratified data on the rates of symptomatic infection, we run the model with the parameters given in Table 1 to estimate these rates. Influenza vaccination has been shown to reduce the risk of symptomatic infection [31, 32], but influenza vaccination rates vary by race and age, with decreased vaccination coverage in marginalized populations [15, 33]. While our model does not incorporate vaccination explicitly, we included vaccination by assuming that people who got vaccinated in the current influenza season will have a lower probability of symptomatic infection than those who are unvaccinated. We determined the proportion of vaccinated people in each age and racial-ethnic group based on race-stratified historic vaccination rates from [15]. We



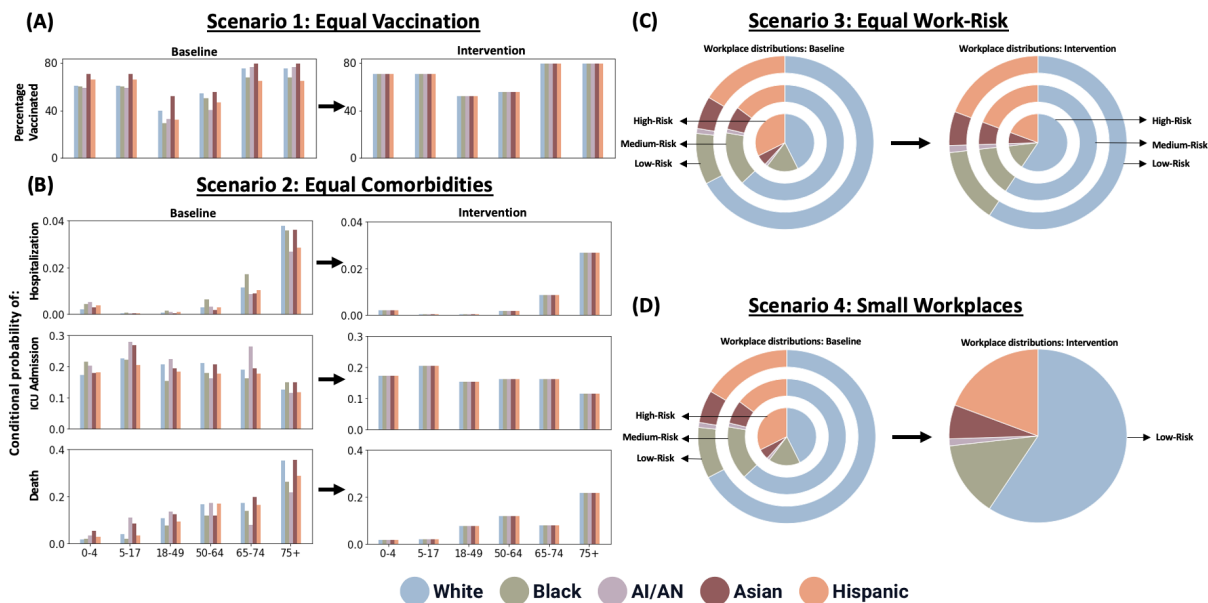
**Figure 3.:** Racial and ethnic distributions of schools. Figure 3(A) shows the school composition for the two types of schools in our synthetic population. Figures 3(B) and (C) compare our model distribution to the example school distributions from data for each of the two school types.

assumed a vaccine efficacy against symptomatic infection of 50%, in agreement with estimates from typical influenza seasons [34].

## 2.2. Equity-promoting interventions under study

We explored scenarios representing a typical influenza season and various equity-promoting interventions. For each scenario, we model a population of five million people and run the model 100 times. We report results showing median disease outcomes together with corresponding interquartile ranges. We tested five equity promoting interventions are explored as follows: 1) a scenario where the age-stratified vaccination rates are equalized for all race groups, choosing the highest vaccination rate as the reference (denoted “Equal vaccination”), 2) a scenario where the age-stratified risks of hospitalization, ICU admission, and death after infection are equalized for all race groups (denoted “Equal Comorbidities”), 3) a scenario where the race distribution of workers is proportional to that of the population regardless of workplace size race (denoted “Equal Work-Risk”), 4) a scenario where all workplaces, are transformed into low-risk workplaces by imposing risk-reducing measures resulting in less contacts (denoted “Low-RISK Workplaces”), and 5) a scenario where the probabilities of severe outcomes are equal and workplaces are low-risk (denoted “Equal comorbidities and low-risk workplaces”). Each of these scenarios targets different challenges faced by marginalized populations. The first two scenarios target underlying health inequities that affect the outcomes of an influenza infection, resulting in a higher probability of developing symptoms due for example, to reduced vaccination rates in the BIPOC populations, (targeted in scenario 1) or a higher rate of severe outcomes due for example, to more prevalent comorbidities in marginalized populations, (targeted in scenario 2). Scenarios 3 and 4 aim at addressing structural inequities that stem from the overall societal structure in which a substantially higher proportion of BIPOC populations are employed in lower-income frontline occupations. Scenario 5 is a combination of scenarios 2 and 4. In Figure 4, we provide a graphical description of the changes made to the model to implement each scenario.

Obviously, we do not pretend to solve the complex problem of systemic inequity with these simple scenarios. Rather, the goal of this project is to characterize the potential impact of five equity-promoting interventions to the inequities in hospitalization rates for seasonal influenza.



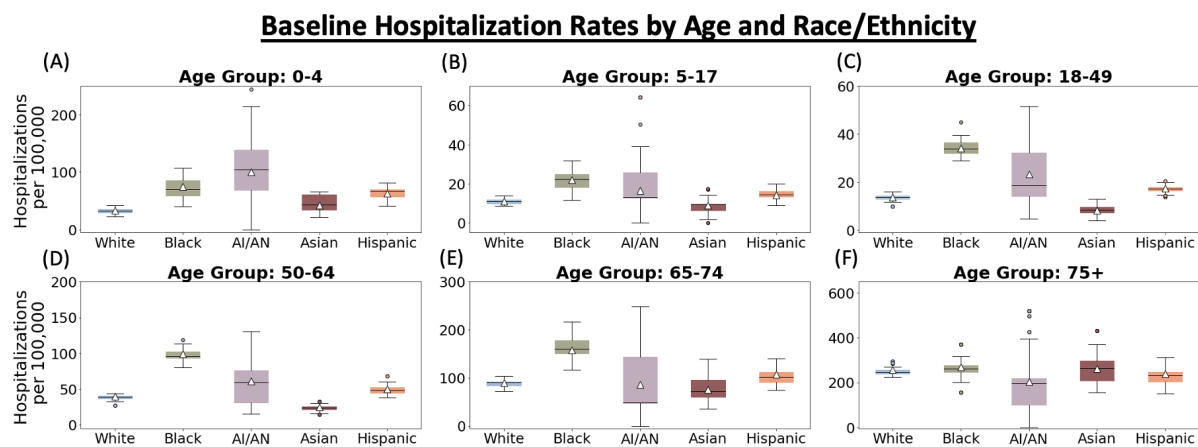
**Figure 4.:** Graphical description of equity-promoting interventions

### 3. Results

#### 3.1. Results from Baseline Model

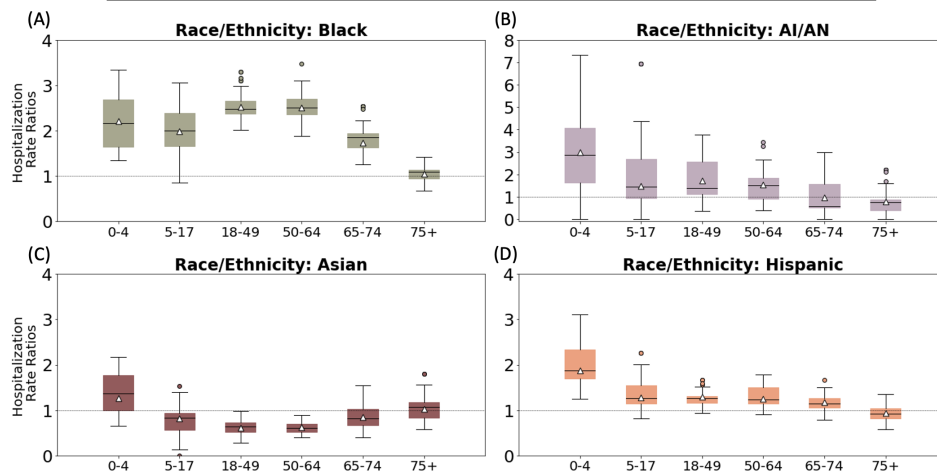
The model was adjusted to match the number of hospitalizations and the age- and race-stratified hospitalization rate ratios (HRRs) from a typical influenza season, using the data provided by O'Halloran *et al.* in [3]. The hospitalization rate ratio was computed as the ratio between the number of hospitalizations per 100,000 in a given age and race group and the number of hospitalizations per 100,000 in the corresponding white age group. An HRR of one means that the hospitalization rate in a given age and race group is close to that observed in the corresponding white population. If all race groups have equitable outcomes, the HRRs would be all equal to one.

Figures 5 and 6 show the age- and race-stratified hospitalizations per 100,000 and the age- and race-stratified HRRs, respectively, from the model together with the data reported by [3]. Our model closely matches the reported average hospitalizations and the HRRs for all age and



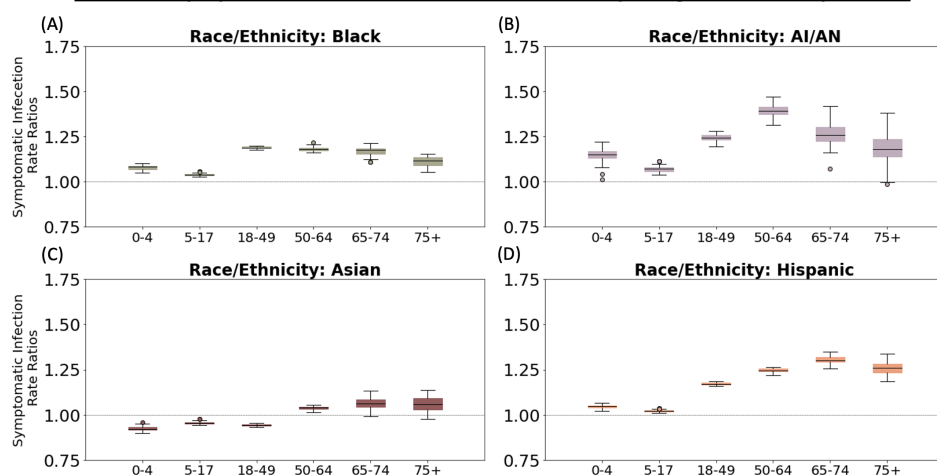
**Figure 5.:** The distribution of the age-and-race-stratified hospitalizations compared to data. The box plots in Figures (A)-(F) show the distribution of the average hospitalizations over 100 simulations using a population size of five million. The white triangles correspond to the values reported by [3]. We see that we achieve reasonable agreement between the model outputs and the data.

### Baseline Hospitalization Rates Ratios: Comparing to White Population



**Figure 6.:** The distribution of the HRRs compared to data. The box plots in Figures (A)-(D) show the distribution of the HRRs over 100 simulations using a population size of five million. The white triangles correspond to the values reported by [3]. We see that we achieve reasonable agreement between the model outputs and the data.

### Baseline Symptomatic Infection Rates Ratios: Comparing to White Population



**Figure 7.:** The distribution of the SRRs. The box plots in Figures (A)-(D) show the distribution of the SRRs over 100 simulations using a population size of five million. We see that the Black, AI/AN, and Hispanic populations all experience higher rates of symptomatic infection in our model than the white population. The Asian population, however, experiences rates very similar to the white population, except in the 18-49 age-group, which is smaller.

race subgroups. Because of the relatively small size of the AI/AN population, there was more variability observed for all ages in this race group.

Mild symptomatic influenza infections are not usually reported [35, 36], and marginalized race groups, who are likely to have less access to health care [10, 37, 38] and less ability to take time off when sick, are less likely to report their mild infections [35]. As a result, the rates of symptomatic influenza infection are difficult to determine from data and are likely to be biased. We, therefore, use our model to estimate inequities in the number of symptomatic infections between different race groups.

Figure 7 shows the symptomatic-infection rate ratios (SRRs), which are calculated similarly to the HRRs and describe differences between symptomatic infection rates among the Black, Hispanic, Asian and AI/AN populations compared to their white counterparts. In our model, the Black, AI/AN, and Hispanic populations experience higher rates of symptomatic infection than those of the white population. This is especially true for the adult age-groups, for which

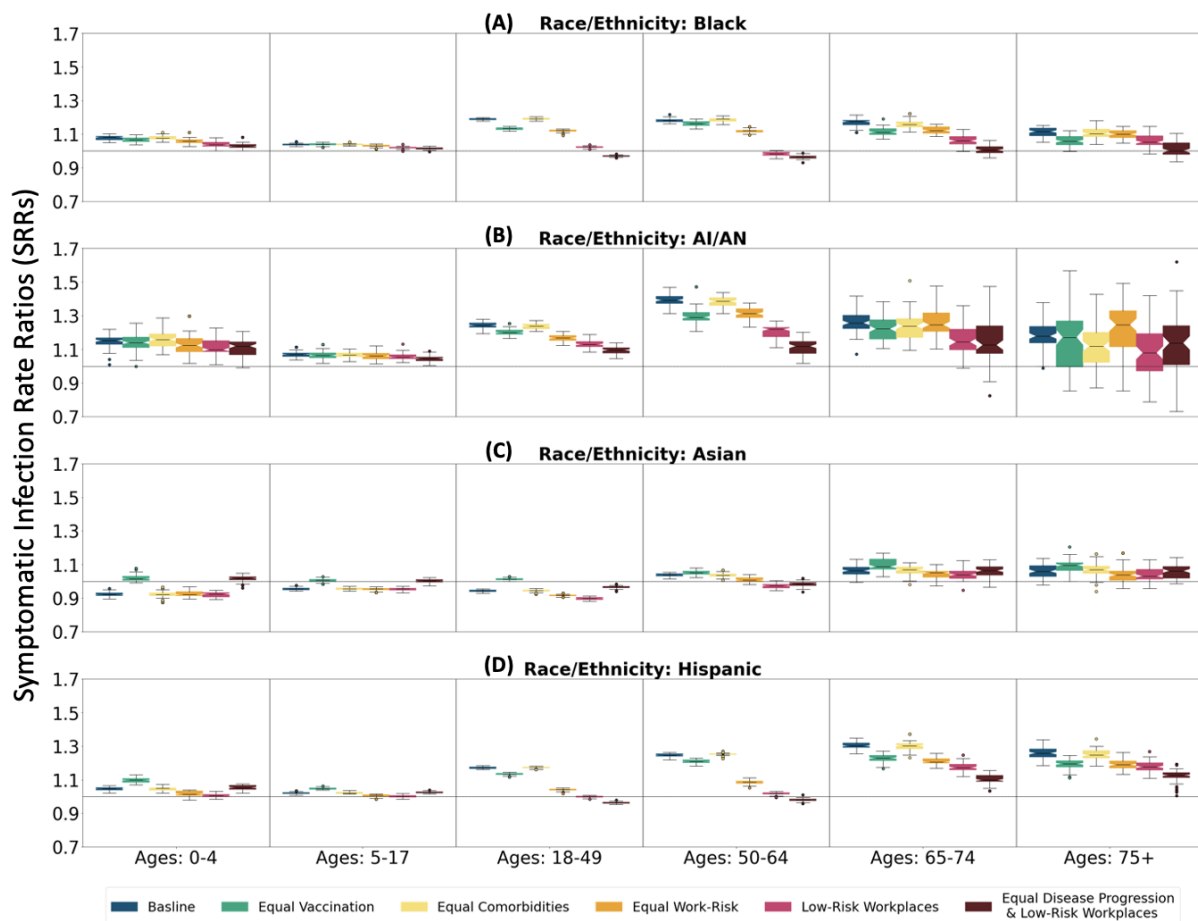
the rates of symptomatic infection were between about 1.2 to 1.4 times higher (Figure 7A, B and D). The Asian population, however, experiences rates of symptomatic infection that are close to those of the white population for all age-groups (Figure 7C).

### 3.2. Results from Equity-Promoting Interventions

Using the results in Figures 6 and 7 as a baseline, we can compare changes in the inequities in both symptomatic infections and hospitalizations that result from the equity-promoting interventions described in Section 2.2.

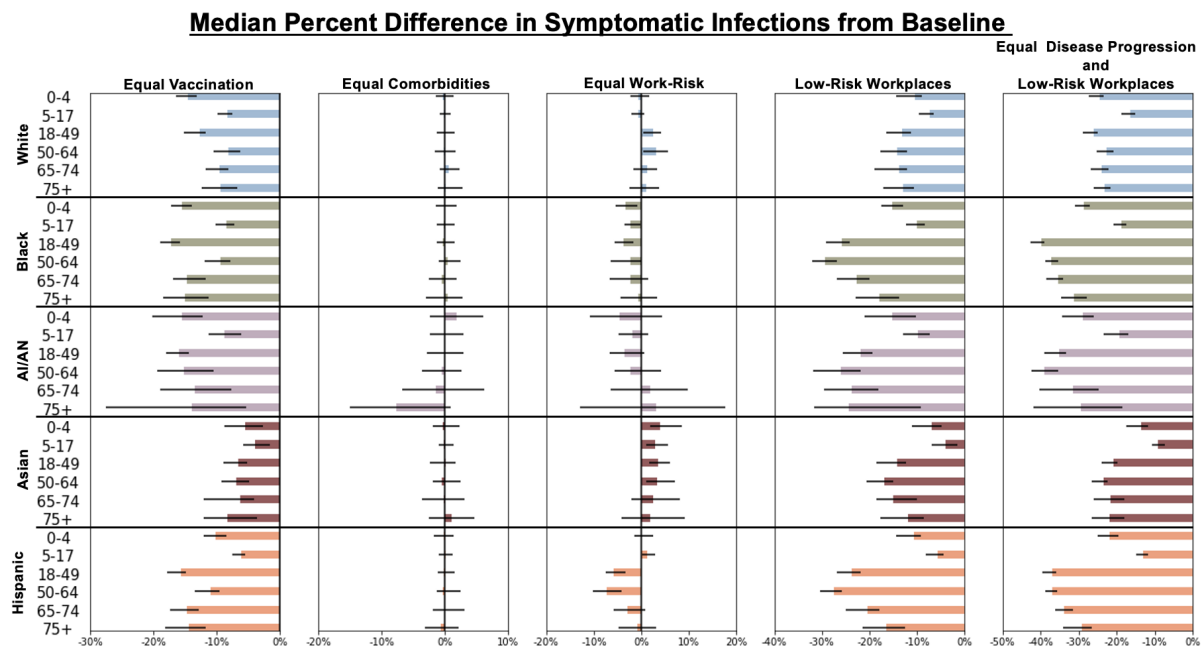
#### 3.2.1. Effects on Symptomatic Infection

Figure 8 shows the impact of our five scenarios on the SRRs. For the populations facing the most inequities, scenarios impacting work contacts improved inequities relative to the baseline the most. Scenario 4 (low-risk workplaces), assuming low-risk workplaces for all workplaces, reduced the SRR the most for all groups and races, with SSR closest to equity (SRR = 1) for all race groups and most of the adult age groups (Figure 8, magenta boxplots). This intervention would also reduce symptomatic infections the most, maximum reduction of 17%, 12%, and 18% in



**Figure 8.:** Comparison of the SRRs from different scenarios to the baseline. The box plots in Figures (A)-(D) show the distribution of the SRRs over 100 simulations using a population size of five million. Figure (A) shows the SRRs for the Black population, Figure (B) shows the SRRs for the AI/AN population, Figure (C) shows the SRRs for the Asian population, and Figure (D) shows the SRRs for the Hispanic population. In each figure, the vertical gray lines separate the box plots for different age groups. The horizontal gray lines are at one and indicate where the symptomatic-infection rates are equivalent to those of the white population. For each group, the box plots from left to right are for the baseline scenario, the equal vaccine scenario, the equal disease progression scenario, the equal work-risk scenario, the small-workplaces scenario, and the equal disease progression and small-workplaces scenario.





**Figure 9.:** Percent difference in the number of symptomatic infections from scenarios compared to baseline.

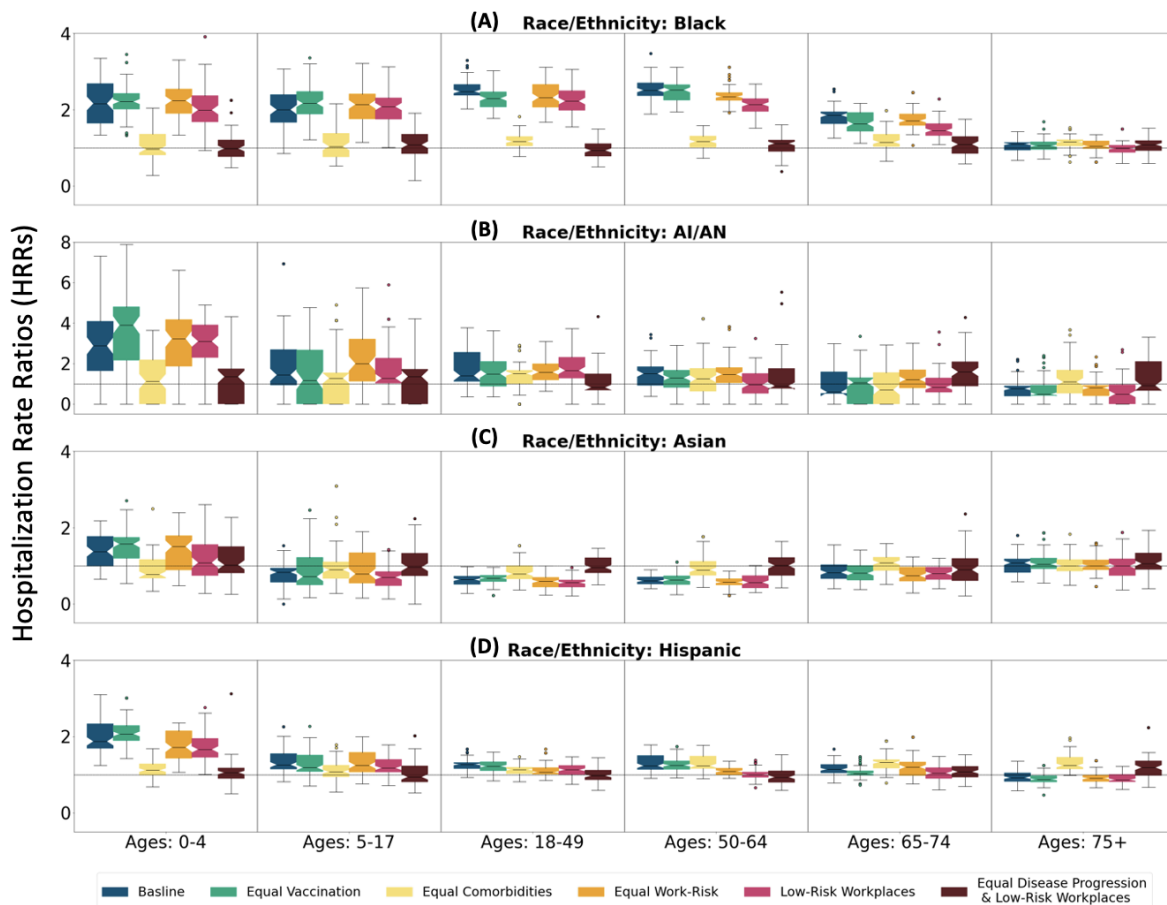
the 50-64 year-old Black, Hispanic, and AI/AN groups, respectively (Figure 9, fourth column). An intervention aiming at achieving workplace distribution similar to the one observed in the population (denoted Equal Work-Risk) would also reduce the inequities observed in the SRR (Figure 8, orange boxplots), but it would do so with little impact in the overall number of symptomatic infections averted, resulting in a small negative impact for adults in the white group and for all ages in the Asian group (Figure 9, third column). Achieving equity in vaccination rates (scenario 1, equal vaccination) resulted in significant gains in the number of symptomatic infections averted, with a maximum reduction of 17% infections averted in the Black young adult age group (18-49 years old, Figure 9, first column), but had a more modest reduction the SRR (Figure 8, green boxplots). As expected, removing inequities in severe outcomes, did not improve inequities in symptomatic infection.

Finally, the combination scenario with both equal disease progression and low-risk workplaces (scenario 5, equal disease progression and low-risk workplaces) reduced the SRRs the most across all age-groups for the three most marginalized populations (the Black, Hispanic and AI/AN adults, Figure 8, brown bars), and it averted the most symptomatic infections (maximum of 21% in the 50-64 year-old Hispanic population, Figure 9, fifth column). This is expected, as this scenario is a combination of the best two single intervention scenarios.

Importantly, scenarios 1 (equal vaccination), 4 (low-risk workplaces), and 5 (equal disease progression and low-risk workplaces) resulted in significantly less symptomatic infections overall, with gains for all ages and race groups, with a maximum of approximately 40% less symptomatic infections in marginalized populations (for scenario 5 in the Black population aged 18-49), and up to 26% and 23% less infections in the white and Asian populations respectively (whites aged 18-49 and Asian aged 50-64, scenario 5, equal disease progression and low-risk workplaces), Figure 9, Table 2.

### 3.2.2. Effects on Hospitalizations

Figure 10 shows the effects of the five intervention scenarios on the inequities in HRRs. For most age and race groups, these interventions improved the observed inequities when compared to the baseline. Consistent with the results for the SRRs, the combined scenario 5 (equal disease progression and small-workplaces scenario) achieved the most equitable results for most groups.

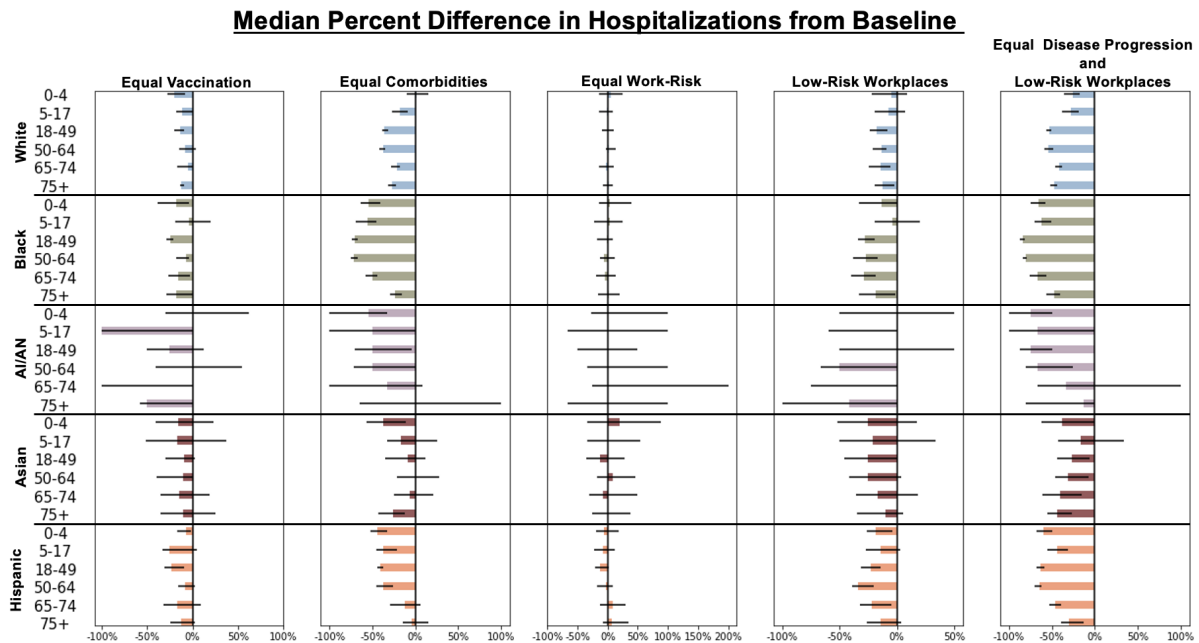


**Figure 10.:** Comparison of the HRRs from different scenarios to baseline. The box plots in Figures (A)-(D) show the distribution of the HRRs over 100 simulations using a population size of five million for (A) the Black population, (B) the AI/AN population, (C) the Asian population, and (D) the Hispanic population. In each figure, the vertical gray lines separate the box plots for different age groups. The horizontal gray lines are at one. An HRR of one indicates that the rate of hospitalization is the same as that for the white population. For each group, the box plots from left to right are for the baseline scenario, the equal vaccine scenario, the equal disease progression scenario, the equal work-risk scenario, the equal work-risk scenario, and the equal disease progression and small-workplaces scenario.

This scenario was closest to equity for most age groups for the Black, AI/AN and Hispanic populations. Furthermore, this scenario resulted in the biggest decrease in hospitalizations for all races and all age groups, including the white population, with over 40% fewer influenza hospitalizations compared to baseline for all white adult groups (Table 3 and 11, last column).

When considering single interventions alone, the intervention achieving the most equity varied by age and race. For children in every race group, the equal comorbidities scenario performed the best in terms of reductions in both inequity and hospitalizations. Additionally, the equal comorbidities scenario also performed the best for adults under 75 in the Black population. For adults in the Hispanic population, however, the low-risk workplaces scenario outperformed the equal comorbidities scenario for adults 50 and older. These results suggest that the inequities in severe outcomes in the Hispanic population are primarily due to inequities in occupational risk, while those in the Black population are primarily due to differences in comorbidity rates. Therefore, our results emphasize that different types of interventions are needed to decrease inequity in different groups.

We then compared the effect of each scenario on the total number of hospitalizations to the baseline scenario (Figure 11 and Table 3). The largest gain for a single intervention was observed with the equal comorbidities scenario, with most marginalized groups seeing over 40% reduction in hospitalizations. For example, if the Black adults aged 18-64 had similar disease progression as their white counterparts, they would experience over 70% fewer hospitalizations



**Figure 11.:** Percent difference in the number of hospitalizations infections from scenarios compared to baseline.

when compared to baseline. Under this scenario, the AI/AN and Hispanic groups saw over 50% and 37% reduction in influenza hospitalizations, respectively, in age groups younger than 65 years old. Interestingly, under this scenario, young children (0-4 years old) in the Asian group experienced 37.5% fewer influenza hospitalizations. Reducing contacts in the workplace (scenario 4) led to a modest decrease in hospitalizations, with the maximum reduction observed in the AI/AN group (50% reduction in the 50-65 age group). Equalizing the vaccination rates across ages and race groups led to a small decrease in total hospitalizations for all groups but those aged 5-17 and those over 75 years old in the AI/AN group (33% and 50% less hospitalizations, respectively). As before, combining two interventions resulted in important reductions in the total number of hospitalizations in all groups (maximum reduction: 75% in young children and adults aged 50-64 in the AI/AN group). As with the symptomatic infections, it is key to note that equity promoting interventions did not result in less hospitalizations for those in the BIPOC communities exclusively. All the interventions but one (equal work risk) resulted in fewer influenza hospitalizations in all groups. For example, equalizing vaccination rates resulted in at least 10% less infections in all white age-groups.

#### 4. Discussion

As the recent COVID-19 pandemic has highlighted, the burden of infectious diseases disproportionately falls on marginalized populations [5, 39–41]. There is currently new momentum to close these disparity gaps with interventions aimed to increase prevention, vaccination, access to healthcare, and treatment [42–46]. To better support those in marginalized communities facing current outbreaks and to prepare for future pandemics, it is important to quantify the potential impact of interventions aimed to reduce inequities[47]. In this project, we constructed an agent-based mathematical model of influenza transmission that captures both structural differences between racial and ethnic groups in the US (household composition, work-related risk, and school contacts) and differences in health outcomes (rates of disease progression) deriving from long-held inequities and systemic racism. Our goal is to provide a framework for studying racial inequities in disease outcomes and to evaluate the effects of potential interventions.

We explored the effects of five equity-promoting interventions aimed to reduce different social determinants of health that affect influenza outcomes. These determinants can be structural in-

equities leading to differences in exposure (represented by work contacts and type of occupation), health inequities (represented by differences in disease progression rates), or both. Strategies for reducing inequities in disease outcomes could include vaccination campaigns that are tailored to reach marginalized groups, interventions intended to reduce comorbidities in these groups, or more systemic approaches aimed at reducing inequities in health outcomes (e.g. improve health care coverage and access in marginalized populations). Strategies for reducing inequities in work contacts could include social-distancing measures in workplaces that reduce the probability of transmission and exposure, incorporating better air filtration systems or more systemic cultural and workplace changes. Evidently, systemic changes are more difficult to attain and will require major commitment from all sectors of society [48]. Nevertheless, we considered it important to consider them and to quantify the potential impact such strategies could have on influenza hospitalizations.

Our results assuming equal vaccination rates indicate that tailored vaccination campaigns to increase rates among marginalized communities may have an equalizing effect in symptomatic infection rates, especially for those populations facing the most inequities. Our results suggest that younger adults (aged 18-49 years) in Black, AI/AN and Hispanic communities would benefit the most from this intervention, preventing up to 17% of symptomatic infections from the baseline scenario. This is important because these populations have generally less access to medical care [8, 10], are more likely to be employed in frontline occupations [25, 26] and have less work benefits (e.g. working from home [25] or paid sick leave [49]). Interestingly, their corresponding white counterparts would also experience fewer symptomatic infections, with up to 15% less compared to baseline. In addition, this strategy would lessen the significant economic burden [50] posed by symptomatic influenza every year. Moreover, the results of the equal comorbidities scenario suggest that policies that reduce race-based comorbidities would have a large impact on the inequities in influenza hospitalizations. In addition, the scenario implementing fewer contacts in the workplace (called low-risk workplaces) had a much larger effect, and benefited more groups, than the one where contacts were maintained at the same rates but the distribution of contacts was proportional to that of the population. This suggests that implementing (relatively) small changes in workplaces (such as better air filtration systems, social distancing measures) can have a large impact in influenza outcomes. Finally, it is important to note that our results suggest that improving equity and fairness in health outcomes and reducing contacts in workplaces resulted in significant reductions in the number of symptomatic influenza infections and hospitalizations for all racial-groups, not only those in marginalized groups targeted by these interventions.

This study, like any mathematical modeling analysis, has some limitations. Our model is a simplification of a very complex problem: health inequities are the result of a multi-factorial problem rooted in a long history of systemic racism and socioeconomic deprivation as well as a fragmented healthcare system that makes it difficult to align data, resources, and interventions, optimally [51]. As such, we included in this model SDOH for which data was readily available while maintaining the tractability of the model. We considered race-stratified household size, school composition, and disease progression. We stratified workplaces by age, race/ethnicity and infection risk. Additional SDOH could, however, be included. For example, a next step could be to incorporate specific influenza comorbidities by age and racial/ethnic group, such as heart disease, diabetes, and asthma [52, 53] into the model. We did not include interracial households, which account for 10% of households in the United States. This could result in epidemics that have more assortative mixing. However, agents in our model contact people from other racial-ethnic groups in other locations, minimizing this effect.

We use racial identity as a proxy for exposure to racism and to study inequities in influenza cases and hospitalizations, but racial identity is known to be a poor proxy for this analysis, and for studying health inequities in general [54]. However, other SDOH (e.g. occupation, access to health care, socioeconomic status) are usually not collected along with case information. This highlights the pressing need to collect more informative social determinants of health data, so that inequities can be better understood and analyzed.

Researchers and decision makers are increasingly recognizing the need to incorporate equity

or fairness considerations into analyses aiming to evaluate public health interventions [55–59], including analysis using mathematical models of infectious diseases. Previous work has focused on reducing racial and ethnic inequities in COVID-19 outcomes [60–62] assessing the impact of COVID-19 mitigation strategies on different racial and ethnic groups [63, 64], optimizing equitable vaccine distribution for COVID-19 and influenza [60, 65, 66] studying inequity between subgroups for influenza and other diseases [67, 68], and promoting equity in resource allocation between geographic regions for Ebola [69]. We hope that the present work will be a helpful addition to the existing literature and will promote further discussion and use of quantitative methods to evaluate equity-promoting interventions in public health.

## Funding Statement

This work was partially supported by grants from the National Institutes of Health (UM1AI068635). L.M. and D.D. were also supported by a grant from Centers for Disease Control and Prevention (NU38OT000297-02) through their cooperative agreement with the Council of State and Territorial Epidemiologists. L.M. was partially funded through the IDCRC Early Career Investigator Pilot Award subaward #A925844 (NIH # 5UM1AI148684-05). The content is solely the responsibility of the authors and does not necessarily represent the official views of the National Institutes of Health.

## References

- [1] J. I. Tokars, S. J. Olsen, and C. Reed, “Seasonal incidence of symptomatic influenza in the United States,” *Clin Infect Dis*, vol. 66, pp. 1511–1518, 2018. DOI: 10.1093/cid/cix1060.
- [2] Centers for Disease Control and Prevention, “Disease burden of flu,” URL: <https://www.cdc.gov/flu/about/burden/index.html#:~:text=While%20the%20effects%20of%20flu,annually%20between%202010%20and%202023> (Accessed March 13, 2024).
- [3] A. C. O’Halloran, R. Holstein, and C. Cummings, “Rates of influenza-associated hospitalization, intensive care unit admission, and in-hospital death by race and ethnicity in the United States from 2009 to 2019,” *JAMA Netw Open*, vol. 4, p. e2121880, 2021. DOI: 10.1001/jamanetworkopen.2021.21880.
- [4] S. C. Quinn, S. Kumar, V. S. Freimuth, D. Musa, N. Casteneda-Angarita, and K. Kidwell, “Racial disparities in exposure, susceptibility, and access to health care in the US H1N1 influenza pandemic,” *Am J Public Health*, vol. 101, pp. 285–293, 2011. DOI: 10.2105/ajph.2009.188029.
- [5] K. K. Kondo, B. E. Williams, C. K. Ayers, D. Kansagara, M. Smith, S. M. Advani, S. Young, and S. Saha, “Factors associated with health inequalities in infectious disease pandemics predating COVID-19 in the United States: A systematic review,” *Health Equity*, vol. 6, pp. 254–269, 2022. DOI: 10.1089/heq.2021.0049.
- [6] P. Blumenshine, A. Reingold, S. Egerter, R. Mockenhaupt, P. Braveman, and J. Marks, “Pandemic influenza planning in the united states from a health disparities perspective,” *Emerg Infect Dis*, vol. 14, pp. 709–715, 2008. DOI: 10.3201/eid1405.071301.
- [7] United States Department of Health and Human Services, “Social determinants of health - healthy people 2030,” URL: <https://health.gov/healthypeople/priority-areas/social-determinants-health> (Accessed on April 23, 2024).
- [8] E. Cordoba and A. E. Aiello, “Social determinants of influenza illness and outbreaks in the United States,” *N C Med J*, vol. 77, pp. 341–345, 2016. DOI: 10.18043/ncm.77.5.341.
- [9] C. Kamis, A. Stolte, J. S. West, S. H. Fishman, T. Brown, T. Brown, and H. R. Farmer, “Overcrowding and covid-19 mortality across U.S. counties: Are disparities growing over time?,” *SSM Popul Health*, vol. 15, p. 100845, 2021. DOI: <https://doi.org/10.1016/j.ssmph.2021.100845>.
- [10] National Academies of Sciences, Engineering, and Medicine; Health and Medicine Division; Board on Population Health and Public Health Practice; Committee on Community-Based Solutions to Promote Health Equity in the United States; Baciu A, Negussie Y, Geller A, et al., editors, “The root causes of health inequity,” in *Communities in Action: Pathways*

- to *Health Equity*, Washington (DC): National Academies Press (US), 2017 Jan 11. URL: <https://www.ncbi.nlm.nih.gov/books/NBK425845/>.
- [11] C. J. Granade, M. C. Lindley, T. Jatlaoui, A. F. Asif, and N. Jones-Jack, “Racial and ethnic disparities in adult vaccination: A review of the state of evidence,” *Health Equity*, vol. 6, no. 1, pp. 206–223, 2022.
  - [12] N. Hsieh, “Unpacking intersectional inequities in flu vaccination by sexuality, gender, and race-ethnicity in the united states,” *Journal of Health and Social Behavior*, vol. 65, no. 1, pp. 38–59, 2024. PMID: 37776198.
  - [13] A. Kini, R. Morgan, H. Kuo, P. Shea, J. Shapiro, S. X. Leng, A. Pekosz, and S. L. Klein, “Differences and disparities in seasonal influenza vaccine, acceptance, adverse reactions, and coverage by age, sex, gender, and race,” *Vaccine*, vol. 40, no. 11, pp. 1643–1654, 2022. Optimunize: Improving the Beneficial Effects of Vaccines.
  - [14] S. M. Mahmud, G. Pabla, C. H. Righolt, M. M. Loiacono, E. Thommes, and A. Chit, “What explains racial/ethnic inequities in the uptake of differentiated influenza vaccines?,” *Preventive Medicine*, vol. 163, p. 107236, 2022.
  - [15] C. L. Black, A. O’Halloran, M. C. Hung, A. Srivastav, P. J. Lu, S. Garg, M. Jhung, A. Fry, T. C. Jatlaoui, E. Davenport, E. Burns, and Influenza-Associated Hospitalization Surveillance Network, “Vital signs: Influenza hospitalizations and vaccination coverage by race and ethnicity-United States, 2009-10 through 2021-22 influenza seasons,” *MMWR Morb Mortal Wkly Rep*, vol. 71, 2022. DOI: 10.15585/mmwr.mm7143e1.
  - [16] L. I. Brewer, M. J. Ommerborn, A. L. Nguyen, and C. R. Clark, “Structural inequities in seasonal influenza vaccination rates,” *BMC Public Health*, vol. 21, p. 1166, 2021. DOI: 10.1186/s12889-021-11179-9.
  - [17] C. C. Kerr, R. M. Stuart, D. Mistry, R. G. Abeyasuriya, R. Rosenfeld, G. Hart, R. C. Núñez, J. A. Cohen, P. Selvaraj, B. Hagedorn, L. George, M. Jastrzebski, A. Izzo, G. Fowler, A. Palmer, D. Delpont, N. Scott, S. Kelly, C. Bennette, B. Wagner, S. Chang, A. Oron, E. Wenger, J. Panovska-Griffiths, M. Famulare, and D. J. Klein, “Covasim: an agent-based model of COVID-19 dynamics and interventions,” *PLoS Comput Biol*, vol. 17, p. e1009149, 2021. DOI: 10.1371/journal.pcbi.1009149.
  - [18] J. A. Cohen, R. M. Stuart, R. C. Núñez, B. Wagner, S. T. Chang, K. Rosenfeld, C. C. Kerr, M. Famulare, and D. J. Klein, “Mechanistic modeling of SARS-CoV-2 immune memory, variants, and vaccines,” *medRxiv*, p. 2021.05.31.21258018, under review; posted 2021-06-01. DOI: 10.1101/2021.05.31.21258018.
  - [19] S. Riley, K. O. Kwok, K. M. Wu, D. Y. Ning, B. J. Cowling, J. T. Wu, L. M. Ho, T. Tsang, S. V. Lo, D. K. Chu, E. S. Ma, and J. S. Peiris, “Epidemiological characteristics of 2009 (H1N1) pandemic influenza based on paired sera from a longitudinal community cohort study,” *PLoS Med*, vol. 8, p. e1000442, 2011. DOI: 10.1371/journal.pmed.1000442.
  - [20] Q. S. Huang, D. Bandaranayake, T. Wood, E. C. Newbern, R. Seeds, J. Ralston, B. Waite, A. Bissielo, N. Prasad, A. Todd, and et al., “Risk factors and attack rates of seasonal influenza infection: Results of the southern hemisphere influenza and vaccine effectiveness research and surveillance (shivers) seroepidemiologic cohort study,” *J Infect Dis*, vol. 219, pp. 347–357, 2018. DOI: 10.1093/infdis/jiy443.
  - [21] D. Mistry, C. C. Kerr, R. Abeyasuriya, M. Wu, M. Fisher, A. Thompson, L. Skrip, J. A. Cohen, B. M. Althouse, and D. J. Klein, “Synthpops: a generative model of human contact networks,” 2021. (in preparation).
  - [22] Centers for Disease Control and Prevention, “NHIS - race and Hispanic origin - glossary,” 2015. URL: [https://www.cdc.gov/nchs/nhis/rhoi/rhoi\\_glossary.htm](https://www.cdc.gov/nchs/nhis/rhoi/rhoi_glossary.htm) (Accessed on March 13, 2024).
  - [23] United States Census Bureau, “Custom table: CPS annual social and economic (March) supplement MAR 2020,” n.d. <https://data.census.gov/mdat/> (Accessed May 26, 2023).
  - [24] United States Census Bureau, “America’s families and living arrangements: 2019,” 2021. URL: <https://www.census.gov/data/tables/2019/demo/families/cps-2019.html> (Accessed on March 13, 2024).
  - [25] M. Burrows, C. Burd, and B. McKenzie, “White and higher-income workers most prevalent among home-based workers,” *United States Census Bureau*, 2023. URL: <https://www.census.gov/library/stories/2023/04/more-people-worked-from-home-2019-2021.html#:~:text=In%202021%2C%20White%20workers%20made,home%2Dbased%20workers%20in%202021> (Accessed on 01/29/23).
  - [26] L. Casura, R. Lowe, J R, C. Martinez, S. Serpas, V. Castellanos, and J. Singelmann, “Frontline workers in the U.S.: race, ethnicity, and gender,” *N-IUSSP*, 2020. URL: <https://www.niussp.org/>

- education-work-economy/frontline-workers-in-the-u-s-race-ethnicity/ (Accessed on 01/29/23).
- [27] U.S. Census Bureau, “All sectors: County business patterns, including zip code business patterns, by legal form of organization and employment size class for the U.S., states, and selected geographies: 2019.,” *Economic Surveys, ECNSVY Business Patterns County Business Patterns*, p. Table CB1900CBP, 2019. URL: [https://data.census.gov/table/CBP2019.CB1900CBP?g=010XX00US\\_310XX00US42660&n=00:33531](https://data.census.gov/table/CBP2019.CB1900CBP?g=010XX00US_310XX00US42660&n=00:33531) (Accessed on December 6, 2023).
- [28] G. Balk, “Why aren’t Seattle schools more racially diverse? look at the neighborhoods,” *The Seattle Times*, 2020. URL: <https://www.seattletimes.com/seattle-news/data/how-racially-diverse-is-your-public-school-use-our-interactive-to-find-out/> (Accessed on 01/29/23).
- [29] United States Census Bureau, “Quickfacts: United States,” URL: <https://www.census.gov/quickfacts/fact/table/US/PST045222> (Accessed on 01/29/23).
- [30] United States Census Bureau, “Quickfacts: Seattle, Washington,” URL: <https://www.census.gov/quickfacts/seattlecitywashington> (Accessed on 01/29/23).
- [31] R. G. Deiss, J. C. Arnold, W.-J. Chen, S. Echols, M. P. Fairchok, C. Schofield, P. J. Danaher, E. McDonough, M. Ridoré, D. Mor, and et al., “Vaccine-associated reduction in symptom severity among patients with influenza A/H3N2 disease,” *Vaccine*, vol. 33, pp. 7160–7167, 2015. DOI: 10.1016/j.vaccine.2015.11.004.
- [32] L. A. Grohskopf, E. Alyanak, K. R. Broder, E. B. Walter, A. M. Fry, and D. B. Jernigan, “Prevention and control of seasonal influenza with vaccines: Recommendations of the advisory committee on immunization practices — United States, 2019–20 influenza season,” *MMWR Recomm Rep*, vol. 68, pp. 1–21, 2019. DOI: 10.15585/mmwr.rr6803a1.
- [33] S. Artiga, J. Michaud, J. Kates, and K. Orgera, “Racial disparities in flu vaccination: Implications for COVID-19 vaccination efforts,” *KFF*, 2020. URL: <https://www.kff.org/policy-watch/racial-disparities-flu-vaccination-implications-covid-19-vaccination-efforts/> (Accessed on April 23, 2024).
- [34] Centers for Disease Control and Prevention, “Vaccine effectiveness: How well do flu vaccines work?,” 2023. URL: [https://www.cdc.gov/flu/vaccines-work/vaccineeffect.htm#:~:text=While%20vaccine%20effectiveness%20\(VE\)%20can,used%20to%20make%20flu%20vaccines](https://www.cdc.gov/flu/vaccines-work/vaccineeffect.htm#:~:text=While%20vaccine%20effectiveness%20(VE)%20can,used%20to%20make%20flu%20vaccines) (Accessed on March 13, 2024).
- [35] C. L. Gibbons, M.-J. J. Mangen, D. Plass, A. H. Havelaar, R. J. Brooke, P. Kramarz, K. L. Peterson, A. L. Stuurman, A. Cassini, E. M. Fèvre, and M. E. E. Kretzschmar, “Measuring underreporting and under-ascertainment in infectious disease datasets: a comparison of methods,” *BMC Public Health*, vol. 14, p. 147, 2014. DOI: 10.1186/1471-2458-14-147.
- [36] Z. McCarthy, S. Athar, M. Alavinejad, C. Chow, I. Moyles, K. Nah, J. D. Kong, N. Agrawal, A. Jaber, L. Keane, S. Liu, M. Nahirniak, D. S. Jean, R. Romanescu, J. Stockdale, B. T. Seet, L. Coudeville, E. Thommes, A. F. Taurel, J. Lee, T. Shin, J. Arino, J. Heffernan, A. Chit, and J. Wu, “Quantifying the annual incidence and underestimation of seasonal influenza: A modelling approach,” *Theor Biol Med Model*, vol. 17, p. 11, 2020. DOI: 10.1186/s12976-020-00129-4.
- [37] P. Blumenshine, A. Reingold, S. Egerter, R. Mockenhaupt, P. Braveman, and J. Marks, “Pandemic influenza planning in the United States from a health disparities perspective,” *Emerg Infect Dis*, vol. 14, pp. 709–715, 2008. DOI: 10.3201/eid1405.071301.
- [38] R. J. Blendon, L. M. Koonin, J. M. Benson, M. S. Cetron, W. E. Pollard, E. W. Mitchell, K. J. Weldon, and M. J. Herrmann, “Public response to community mitigation measures for pandemic influenza,” *Emerg Infect Dis*, vol. 14, pp. 778–786, 2008. DOI: 10.3201/eid1405.071437.
- [39] A. Ayorinde, I. Ghosh, I. Ali, I. Zahair, O. Olarewaju, M. Singh, E. Meehan, S. S. Anjorin, S. Rotheram, B. Barr, and et al., “Health inequalities in infectious diseases: A systematic overview of reviews,” *BMJ Open*, vol. 13, 2023. DOI: 10.1136/bmjopen-2022-067429.
- [40] D. B. Tai, A. Shah, C. A. Doubeni, I. G. Sia, and M. L. Wieland, “The disproportionate impact of COVID-19 on racial and ethnic minorities in the United States,” *Clin Infect Dis*, vol. 72, pp. 703–706, 2020. DOI: 10.1093/cid/ciaa815.
- [41] M. M. Robertson, M. G. Shamsunder, E. Brazier, M. Mantravadi, R. Zimba, M. S. Rane, D. A. Westmoreland, A. M. Parcesepe, A. R. Maroko, S. G. Kulkarni, and et al., “Racial/ethnic disparities in exposure, disease susceptibility, and clinical outcomes during COVID-19 pandemic in national cohort of adults, United States,” *Emerg Infect Dis*, vol. 28, pp. 2171–2180, 2022. DOI: 10.3201/eid2811.220072.
- [42] United States Department of Health and Human Services, “Health equity in healthy people 2030 - healthy people 2030,” URL: <https://health.gov/healthypeople/priority-areas/health-equity-healthy-people-2030> (Accessed on April 23, 2024).

- [43] Centers for Disease Control and Prevention, “Health disparities and strategies reports,” 2024. URL: <https://www.cdc.gov/minorityhealth/chdir/index.html> (Accessed on April 23, 2024).
- [44] United States Department of Health and Human Services, “Healthy people 2030: Infectious disease,” URL: <https://health.gov/healthypeople/objectives-and-data/browse-objectives/infectious-disease> (Accessed on April 23, 2024).
- [45] M. Marmot, S. Friel, R. Bell, T. A. Houweling, and S. Taylor, “Closing the gap in a generation: Health equity through action on the social determinants of health,” *Lancet*, vol. 372, pp. 1661–1669, 2008. DOI: 10.1016/s0140-6736(08)61690-6.
- [46] R. Cookson, “Justice and the nice approach,” *J Med Ethics*, vol. 41, pp. 99–102, 2014. DOI: 10.1136/medethics-2014-102386.
- [47] A. Penman-Aguilar, M. Talih, D. Huang, R. Moonesinghe, K. Bouye, and G. Beckles, “Measurement of health disparities, health inequities, and social determinants of health to support the advancement of health equity,” *J Public Health Manag Pract*, vol. 22, 2016. DOI: 10.1097/phh.0000000000000373.
- [48] National Academies of Sciences, Engineering, and Medicine, *Federal Policy to Advance Racial, Ethnic, and Tribal Health Equity*. Washington, DC: The National Academies Press, 2023. DOI: 10.17226/26834.
- [49] A. P. Bartel, S. Kim, J. Nam, M. Rossin-Slater, C. J. Ruhm, and J. Waldfogel, “Racial and ethnic disparities in access to and use of paid family and medical leave: Evidence from four nationally representative datasets: Monthly labor review,” *Monthly Labor Review*, 2019. URL: <https://www.bls.gov/opub/mlr/2019/article/racial-and-ethnic-disparities-in-access-to-and-use-of-paid-family-and-medical-leave.htm> (Accessed on April 23, 2024).
- [50] W. C. W. S. Putri, D. J. Muscatello, M. S. Stockwell, and A. T. Newall, “Economic burden of seasonal influenza in the United States,” *Vaccine*, vol. 36, pp. 3960–3966, 2018. DOI: 10.1016/j.vaccine.2018.05.057.
- [51] L. C. Liburd, E. Ehlinger, Y. Liao, and M. Lichtveld, “Strengthening the science and practice of health equity in public health,” *J Public Health Manag Pract*, vol. 22, 2016. DOI: 10.1097/phh.0000000000000379.
- [52] Centers for Disease Control and Prevention, “Flu symptoms & complications,” 2022. URL: <https://www.cdc.gov/flu/symptoms/symptoms.htm>.
- [53] J. Langer, V. L. Welch, M. M. Moran, A. Cane, S. M. Lopez, A. Srivastava, A. L. Enstone, A. Sears, K. J. Markus, M. Heuser, and et al., “High clinical burden of influenza disease in adults aged  $\geq 65$  years: Can we do better? a systematic literature review,” *Adv Ther*, vol. 40, pp. 1601–1627, 2023. DOI: 10.1007/s12325-023-02432-1.
- [54] E. Lett, E. Asabor, S. Beltrán, A. M. Cannon, and O. A. Arah, “Conceptualizing, contextualizing, and operationalizing race in quantitative health sciences research,” *Ann Fam Med*, vol. 20, pp. 157–163, 2022. DOI: 10.1370/afm.2792.
- [55] R. Cookson, A. J. Mirelman, S. Griffin, M. Asaria, B. Dawkins, O. F. Norheim, S. Verguet, and A. J. Culyer, “Using cost-effectiveness analysis to address health equity concerns,” *Value Health*, vol. 20, pp. 206–212, 2017. DOI: 10.1016/j.jval.2016.11.027.
- [56] T. G. Williams, D. G. Brown, S. D. Guikema, T. M. Logan, N. R. Magliocca, B. Müller, and C. E. Steger, “Integrating equity considerations into agent-based modeling: A conceptual framework and practical guidance,” *J Artif Soc Soc Simul*, vol. 25, p. 1, 2022. DOI: 10.18564/jasss.4816.
- [57] J. Zelner, N. B. Masters, R. Narahariseti, S. A. Mojola, M. Chowkwanyun, and R. Malosh, “There are no equal opportunity infectors: Epidemiological modelers must rethink our approach to inequality in infection risk,” *PLoS Comput Biol*, vol. 18, p. e1009795, 2022. DOI: 10.1371/journal.pcbi.1009795.
- [58] C. Buckee, A. Noor, and L. Sattenspiel, “Thinking clearly about social aspects of infectious disease transmission,” *Nature*, vol. 595, pp. 205–213, 2021. DOI: 10.1038/s41586-021-03694-x.
- [59] N. Saldana-Ruiz, S. A. Clouston, M. S. Rubin, C. G. Colen, and B. G. Link, “Fundamental causes of colorectal cancer mortality in the United States: understanding the importance of socioeconomic status in creating inequality in mortality,” *Am J Public Health*, vol. 103, pp. 99–104, 2013. DOI: 10.2105/AJPH.2012.300743.
- [60] E. Stafford, D. Dimitrov, R. Ceballos, G. Campelia, and L. Matrajt, “Retrospective analysis of equity-based optimization for COVID-19 vaccine allocation,” *PNAS Nexus*, vol. 2, 2023. DOI: 10.1093/pnasnexus/pgad283.
- [61] E. Rumpler, J. M. Feldman, M. T. Bassett, and M. Lipsitch, “Fairness and efficiency considerations in COVID-19 vaccine allocation strategies: A case study comparing front-line workers and 65–74 year olds in the United States,” *PLOS Glob Public Health*, vol. 3, p. e0001378, 2023. DOI: 10.1371/journal.pglph.0001378.



- 10.1371/journal.pgph.0001378.
- [62] L. Chen, F. Xu, Z. Han, K. Tang, P. Hui, J. Evans, and Y. Li, “Strategic COVID-19 vaccine distribution can simultaneously elevate social utility and equity,” *Nat Hum Behav*, vol. 6, pp. 1503–1514, 2022. DOI: 10.1038/s41562-022-01429-0.
- [63] S. Sweeney, T. P. J. Capeding, R. Eggo, M. Huda, M. Jit, D. Mudzengi, N. Naylor, S. Procter, M. Quaife, L. Serebryakova, S. Torres-Rueda, V. Vargas, CHiL COVID Working Group, and A. Vassall, “Exploring equity in health and poverty impacts of control measures for SARS-CoV-2 in six countries,” *BMJ Glob Health*, vol. 6, p. e005521, 2021. DOI: 10.1136/bmjgh-2021-005521.
- [64] S. A. P. Clouston, G. Natale, and B. G. Link, “Socioeconomic inequalities in the spread of coronavirus-19 in the United States: A examination of the emergence of social inequalities,” *Soc Sci Med*, vol. 268, p. 113554, 2021. DOI: 10.1016/j.socscimed.2020.113554.
- [65] S. Enayati and O. Y. Özaltın, “Optimal influenza vaccine distribution with equity,” *Eur J Oper Res*, vol. 283, pp. 714–725, 2020. DOI: 10.1016/j.ejor.2019.11.025.
- [66] V. Shastry, D. C. Reeves, N. Willems, and V. Rai, “Policy and behavioral response to shock events: An agent-based model of the effectiveness and equity of policy design features,” *PLoS ONE*, vol. 17, p. e0262172, 2022. DOI: 10.1371/journal.pone.0262172.
- [67] S. Kumar, K. Piper, D. D. Galloway, J. L. Hadler, and J. J. Grefenstette, “Is population structure sufficient to generate area-level inequalities in influenza rates? an examination using agent-based models,” *BMC Public Health*, vol. 15, p. 947, 2015. DOI: 10.1186/s12889-015-2284-2.
- [68] J. D. Munday, A. J. van Hoek, W. J. Edmunds, and K. E. Atkins, “Quantifying the impact of social groups and vaccination on inequalities in infectious diseases using a mathematical model,” *BMC Med*, vol. 16, p. 162, 2018. DOI: 10.1186/s12916-018-1152-1.
- [69] X. Yin and I. E. Büyüktaktakın, “A multi-stage stochastic programming approach to epidemic resource allocation with equity considerations,” *Health Care Manag Sci*, vol. 24, pp. 597–622, 2021. DOI: 10.1007/s10729-021-09559-z.
- [70] I. M. Longini, M. E. Halloran, A. Nizam, and Y. Yang, “Containing pandemic influenza with antiviral agents,” *Am J Epidemiol*, vol. 159, pp. 623–633, 2004. DOI: 10.1093/aje/kwh092.
- [71] C. E. Mills, J. M. Robins, and M. Lipsitch, “Transmissibility of 1918 pandemic influenza,” *Nature*, vol. 432, pp. 904–906, 2004. DOI: 10.1038/nature03063.
- [72] Centers for Disease Control and Prevention, “How flu spreads,” 2022. URL: <https://www.cdc.gov/flu/about/disease/spread.htm#:~:text=However%2C%20infants%20and%20people%20with,in> (Accessed on March 13, 2024).
- [73] Y. Wang, G. Fan, P. Horby, F. Hayden, Q. Li, Q. Wu, X. Zou, H. Li, Q. Zhan, C. Wang, B. Cao, and CAP-China Network, “Comparative outcomes of adults hospitalized with seasonal influenza A or B virus infection: Application of the 7-category ordinal scale,” *Open Forum Infect Dis*, vol. 6, p. ofz053, 2019. DOI: 10.1093/ofid/ofz053.
- [74] T. K. Tsang, C. Wang, V. J. Fang, R. A. P. M. Perera, H. C. So, D. K. M. Ip, G. M. Leung, J. S. M. Peiris, S. Cauchemez, and B. J. Cowling, “Reconstructing household transmission dynamics to estimate the infectiousness of asymptomatic influenza virus infections,” *Proc Natl Acad Sci U S A*, vol. 120, p. e2304750120, 2023. DOI: 10.1073/pnas.2304750120.
- [75] N. Hood, B. Flannery, M. Gaglani, M. Beeram, K. Wernli, M. L. Jackson, E. T. Martin, A. S. Monto, R. Zimmerman, J. Raviotta, and et al., “Influenza vaccine effectiveness among children: 2011–2020,” *Pediatrics*, vol. 151, 2023. DOI: 10.1542/peds.2022-059922.
- [76] Centers for Disease Control and Prevention, “Past seasons’ vaccine effectiveness estimates,” 2024. URL: <https://www.cdc.gov/flu/vaccines-work/past-seasons-estimates.html> (Accessed on April 23, 2024).
- [77] F. Carrat, E. Vergu, N. M. Ferguson, M. Lemaître, S. Cauchemez, S. Leach, and A.-J. Valleron, “Time lines of infection and disease in human influenza: A review of volunteer challenge studies,” *Am J Epidemiol*, vol. 167, pp. 775–785, 2008. DOI: <https://doi.org/10.1093/aje/kwm375>.

## 5. Supplementary Information

Parameter	Value	Sources
Mean latent period	1.9 Days	[70, 71]
Mean time from becoming infectious to developing mild symptoms	2 days	[72]
Mean time for mild symptoms to become severe	5.4 Days	[73]
Mean time for severe symptoms to become critical	1.5 Days	default COVASIM
Mean time to recovery from no or mild symptoms	4.1 Days	[70, 71]
Mean time to recovery from severe symptoms	13.0 Days	[73]
Mean time to recovery or death from critical symptoms	10.8 Days	[73]
Relative infectivity of asymptomatic infections	0.5	[70]
Transmission coefficient	0.014	calibrated
transmissibility factor for asymptomatic cases	0.5	[74]
Initial number infected	10 individuals	chosen
Population size	5,000,000 individuals	chosen
Relative susceptibility by age	[1.77, 1.77, 1.1, 1.1]	[20]
Probability of developing symptoms by age and race	$(1 - VE * \nu) * \sigma$	
Vaccine efficacy (VE) by age	[0.56, 0.34, 0.41, 0.41, 0.41, 0.41]	[75, 76]
	W: [0.61, 0.61, 0.396, 0.542, 0.757, 0.757]	
	B: [0.60, 0.60, 0.294, 0.505, 0.678, 0.678]	
Vaccination rate ( $\nu$ ) by age and race	AI/AN: [0.59, 0.59, 0.325, 0.405, 0.764, 0.764]	[15, 33]
	A: [0.71, 0.71, 0.521, 0.555, 0.794, 0.794]	
	H: [0.66, 0.66, 0.320, 0.470, 0.652, 0.652]	
Proportion of infections that become symptomatic ( $\sigma$ )	$2/3$	[77]
	W: [0.00204957, 0.00033694, 0.00077772, 0.00296663, 0.01130849, 0.03778833]	
	B: [0.00422417, 0.00064492, 0.00165073, 0.0062825, 0.0170014, 0.03564729]	
Probability of hospitalization after developing symptoms by age and race	AI/AN: [0.00534074, 0.00046921, 0.00108957, 0.00330644, 0.00869, 0.02671089]	calibrated with [3]
	A: [0.00280983, 0.00028594, 0.00050416, 0.00180137, 0.00881692, 0.03608224]	
	H: [0.00365569, 0.00042208, 0.00085414, 0.00298201, 0.01026394, 0.0283762]	
	W: [0.17261905, 0.22522523, 0.20588235, 0.21105528, 0.1878453, 0.1251944]	
	B: [0.21370968, 0.22171946, 0.15204678, 0.17806841, 0.16159696, 0.14935305]	
Probability of ICU admission after hospitalization by age and race	AI/AN: [0.2011893, 0.27878788, 0.22222222, 0.16202946, 0.26237054, 0.11384919]	calibrated with [3]
	A: [0.17924528, 0.26666667, 0.19277108, 0.20481928, 0.19418758, 0.14875717]	
	H: [0.17993631, 0.20422535, 0.18285714, 0.17670683, 0.17630597, 0.11730449]	
	W: [0.01724138, 0.04, 0.10714286, 0.16666667, 0.17058824, 0.35403727]	
	B: [0.01886792, 0.02040816, 0.07692308, 0.11864407, 0.1372549, 0.26237624]	
Probability of death after ICU admission by age and race	AI/AN: [0.03448276, 0.10869565, 0.13461538, 0.17171717, 0.07894737, 0.21645022]	calibrated with [3]
	A: [0.05263158, 0.08333333, 0.125, 0.11764706, 0.19727891, 0.35475578]	
	H: [0.02654867, 0.03448276, 0.09375, 0.17045455, 0.16402116, 0.28723404]	

**Table 1.:** Disease parameters used in the agent-based model

Race/Ethnicity	Ages	Median Percent Difference of Symptomatic Infections from Baseline (IQR) %				
		Equal Vaccination	Equal Comorbidities	Equal Work-Risk	Equal Disease Progression and	
					Low-Risk	Workplaces
White	0-4	-14.6 (-16.5 to -13.1)	-0.3 (-1.5 to 1.4)	-0.6 (-2.3 to 1.7)	-10.4 (-14.4 to -9.0)	-24.5 (-27.2 to -23.5)
	5-17	-8.3 (-9.8 to -7.6)	-0.2 (-0.8 to 0.9)	-0.7 (-2.1 to 0.5)	-7.3 (-9.6 to -6.4)	-16.4 (-18.7 to -15.1)
	18-49	-12.7 (-15.2 to -11.8)	-0.1 (-1.3 to 1.5)	2.5 (0.4 to 4.2)	-13.1 (-16.5 to -11.3)	-26.0 (-28.9 to -24.8)
	50-64	-8.1 (-10.4 to -6.2)	-0.2 (-1.6 to 1.7)	3.1 (0.5 to 5.7)	-14.1 (-17.7 to -12.1)	-22.6 (-25.2 to -20.7)
	65-74	-9.5 (-11.8 to -8.2)	0.6 (-0.8 to 2.4)	1.2 (-1.7 to 3.3)	-13.7 (-19.0 to -12.0)	-24.0 (-26.8 to -22.1)
75+	-9.4 (-12.4 to -6.7)	0.1 (-1.1 to 2.8)	1.0 (-2.4 to 3.6)	-12.9 (-17.1 to -10.6)	-23.0 (-26.0 to -21.6)	
Black	0-4	-15.4 (-17.3 to -13.9)	-0.0 (-1.4 to 1.8)	-3.4 (-5.4 to -0.8)	-15.3 (-17.5 to -12.9)	-28.6 (-31.0 to -27.0)
	5-17	-8.5 (-10.2 to -7.3)	-0.3 (-1.3 to 1.6)	-2.3 (-3.5 to -0.1)	-9.9 (-12.3 to -8.4)	-18.7 (-20.9 to -17.5)
	18-49	-17.3 (-18.9 to -15.9)	-0.3 (-1.2 to 1.6)	-3.7 (-5.7 to -1.6)	-25.8 (-29.0 to -24.2)	-39.8 (-42.5 to -38.9)
	50-64	-9.5 (-11.8 to -7.9)	0.5 (-0.9 to 2.4)	-2.4 (-6.4 to -0.0)	-29.3 (-32.1 to -26.9)	-37.2 (-38.7 to -35.4)
	65-74	-14.6 (-16.9 to -11.7)	-0.5 (-2.6 to 1.9)	-2.3 (-6.6 to 1.5)	-22.6 (-26.9 to -19.9)	-35.3 (-38.4 to -34.1)
75+	-15.1 (-18.4 to -11.2)	0.5 (-3.0 to 2.7)	-0.7 (-4.4 to 3.4)	-18.0 (-23.0 to -13.7)	-31.3 (-34.6 to -27.8)	
AI/AN	0-4	-15.5 (-20.2 to -12.2)	1.9 (-2.4 to 6.0)	-4.5 (-10.8 to 4.5)	-15.1 (-21.0 to -10.2)	-28.9 (-34.2 to -25.9)
	5-17	-8.9 (-11.3 to -6.2)	-0.0 (-2.4 to 2.9)	-1.8 (-4.7 to 1.4)	-9.9 (-12.8 to -7.2)	-19.2 (-23.3 to -17.0)
	18-49	-15.9 (-17.9 to -14.3)	-0.1 (-2.8 to 2.9)	-3.6 (-6.7 to 0.5)	-21.9 (-25.6 to -19.4)	-35.1 (-38.9 to -33.3)
	50-64	-15.1 (-19.3 to -10.6)	-0.5 (-3.6 to 2.6)	-2.2 (-5.5 to 4.2)	-26.0 (-31.9 to -21.8)	-39.1 (-42.3 to -35.3)
	65-74	-13.5 (-18.9 to -7.7)	-1.4 (-6.7 to 6.2)	1.9 (-6.4 to 9.7)	-23.7 (-29.5 to -18.0)	-31.4 (-40.3 to -24.7)
75+	-14.0 (-27.5 to -5.4)	-7.6 (-15.1 to 1.0)	3.0 (-13.0 to 17.7)	-24.3 (-31.6 to -9.2)	-29.4 (-41.8 to -18.4)	
Asian	0-4	-5.5 (-8.8 to -2.7)	-0.3 (-1.8 to 2.4)	3.9 (1.8 to 8.6)	-7.0 (-11.1 to -4.8)	-13.6 (-17.5 to -11.6)
	5-17	-3.9 (-5.9 to -1.7)	-0.1 (-1.0 to 1.4)	2.9 (1.0 to 5.6)	-3.9 (-6.9 to -1.4)	-9.0 (-10.7 to -7.2)
	18-49	-6.6 (-8.9 to -5.2)	0.1 (-2.4 to 1.6)	3.5 (1.6 to 6.0)	-14.2 (-18.4 to -12.3)	-20.8 (-23.9 to -19.9)
	50-64	-6.9 (-9.3 to -4.9)	-0.5 (-2.0 to 2.5)	3.4 (1.1 to 7.1)	-16.8 (-20.7 to -15.0)	-23.4 (-26.4 to -22.3)
	65-74	-6.3 (-12.1 to -4.1)	-0.2 (-3.6 to 3.1)	2.4 (-2.2 to 8.1)	-15.0 (-18.5 to -9.9)	-21.6 (-26.0 to -18.0)
75+	-8.3 (-12.1 to -3.7)	1.1 (-2.5 to 4.7)	1.9 (-4.1 to 9.2)	-11.9 (-17.7 to -8.7)	-21.8 (-26.6 to -17.9)	
Hispanic	0-4	-10.2 (-12.1 to -8.6)	-0.2 (-1.7 to 1.4)	0.0 (-1.4 to 2.6)	-10.6 (-14.5 to -9.2)	-21.9 (-25.0 to -19.5)
	5-17	-6.2 (-7.5 to -5.5)	0.1 (-1.0 to 1.2)	1.2 (0.2 to 2.8)	-5.6 (-8.1 to -4.5)	-13.0 (-14.9 to -11.6)
	18-49	-15.7 (-17.8 to -14.8)	-0.2 (-1.1 to 1.5)	-5.7 (-7.5 to -3.3)	-23.6 (-26.9 to -21.9)	-37.0 (-39.5 to -36.0)
	50-64	-11.0 (-13.4 to -9.6)	-0.3 (-1.3 to 2.4)	-7.2 (-10.1 to -4.2)	-27.5 (-30.4 to -25.8)	-36.9 (-38.8 to -35.5)
	65-74	-14.7 (-17.3 to -12.8)	-0.0 (-1.9 to 3.1)	-2.8 (-5.9 to 0.8)	-20.5 (-25.0 to -17.8)	-33.8 (-36.2 to -31.4)
75+	-14.4 (-18.2 to -11.8)	-0.7 (-3.1 to 2.2)	-0.7 (-4.9 to 3.0)	-16.4 (-21.5 to -12.6)	-29.2 (-34.0 to -26.4)	

**Table 2.:** Table of the percent difference in the number of symptomatic infections compared to the baseline scenario.

Racial/Ethnic Group	Ages	Median Percent Difference of Hospitalizations from Baseline (IQR) %				
		Equal Vaccination	Equal Comorbidities	Equal Work-Risk	Low-Risk Workplaces	Equal Disease Progression and Low-Risk Workplaces
White	0-4	-16.8 (-27.5 to -6.5)	1.5 (-9.4 to 14.7)	4.5 (-13.6 to 24.5)	-4.9 (-22.0 to 8.7)	-25.2 (-36.2 to -17.2)
	5-17	-9.7 (-20.8 to 6.3)	-17.4 (-27.0 to -8.4)	-2.1 (-14.5 to 8.7)	-7.1 (-19.0 to 6.9)	-27.3 (-38.7 to -19.0)
	18-49	-15.2 (-22.2 to -8.4)	-36.0 (-38.6 to -32.0)	0.5 (-8.7 to 9.4)	-17.8 (-23.9 to -8.4)	-53.5 (-56.8 to -50.5)
	50-64	-9.7 (-17.4 to 2.9)	-37.7 (-41.7 to -35.0)	2.6 (-3.1 to 13.1)	-13.6 (-21.4 to -9.2)	-54.2 (-59.0 to -48.7)
	65-74	-11.7 (-18.4 to -2.4)	-21.9 (-27.8 to -17.5)	-3.1 (-14.0 to 10.1)	-14.2 (-24.2 to -5.4)	-41.7 (-46.5 to -38.2)
75+	-10.7 (-13.8 to -7.2)	-27.1 (-32.2 to -22.2)	2.2 (-7.2 to 8.9)	-12.5 (-19.2 to -2.5)	-47.0 (-51.8 to -43.4)	
Black	0-4	-16.7 (-31.0 to 7.9)	-54.2 (-63.1 to -40.5)	3.8 (-14.3 to 40.0)	-13.3 (-33.3 to 0.0)	-66.0 (-75.0 to -57.5)
	5-17	-6.4 (-21.4 to 25.0)	-55.9 (-69.2 to -45.5)	4.2 (-21.7 to 25.0)	-4.2 (-19.0 to 20.1)	-62.6 (-69.7 to -50.7)
	18-49	-24.0 (-29.8 to -14.9)	-70.7 (-74.1 to -67.1)	-1.8 (-17.3 to 8.2)	-28.2 (-33.8 to -19.4)	-83.4 (-86.8 to -81.4)
	50-64	-6.9 (-17.4 to 3.2)	-71.3 (-75.2 to -66.8)	-5.4 (-11.9 to 11.8)	-26.9 (-38.4 to -17.2)	-81.0 (-83.7 to -78.8)
	65-74	-21.4 (-32.6 to -5.9)	-50.5 (-57.7 to -43.8)	-4.7 (-18.5 to 14.0)	-29.2 (-40.4 to -18.8)	-66.7 (-75.3 to -56.4)
75+	-11.7 (-24.4 to 5.7)	-23.3 (-28.8 to -15.3)	2.3 (-15.6 to 20.0)	-18.2 (-32.9 to -1.2)	-47.3 (-56.6 to -40.0)	
AI/AN	0-4	0.0 (-50.0 to 37.5)	-55.0 (-100.0 to -33.3)	0.0 (-27.1 to 100.0)	0.0 (-50.0 to 50.0)	-75.0 (-100.0 to -50.0)
	5-17	-33.3 (-100.0 to 0.0)	-50.0 (-100.0 to 0.0)	0.0 (-66.7 to 100.0)	0.0 (-60.0 to 0.0)	-66.7 (-100.0 to 0.0)
	18-49	-15.5 (-50.0 to 33.3)	-50.0 (-70.0 to -4.2)	0.0 (-50.0 to 50.0)	0.0 (-50.0 to 50.0)	-75.0 (-87.5 to -50.0)
	50-64	-25.0 (-55.4 to 45.8)	-50.0 (-71.4 to 0.0)	0.0 (-33.3 to 100.0)	-50.0 (-66.7 to 0.0)	-66.7 (-80.0 to -25.9)
	65-74	-12.5 (-100.0 to 100.0)	-33.3 (-100.0 to 8.3)	0.0 (-25.0 to 200.0)	0.0 (-75.0 to 0.0)	-33.3 (-66.7 to 100.0)
75+	-50.0 (-66.7 to 0.0)	0.0 (-65.0 to 100.0)	0.0 (-66.7 to 100.0)	-41.7 (-100.0 to 0.0)	-12.5 (-80.0 to 0.0)	
Asian	0-4	-15.4 (-34.5 to 23.3)	-37.5 (-56.7 to -11.5)	20.0 (-33.3 to 88.9)	-25.0 (-51.7 to 17.4)	-38.2 (-62.3 to 0.0)
	5-17	-6.2 (-44.4 to 33.3)	-16.7 (-33.3 to 25.0)	0.0 (-34.1 to 54.2)	-20.8 (-50.0 to 33.3)	-16.7 (-42.9 to 33.3)
	18-49	-12.5 (-27.1 to 8.4)	-8.3 (-34.8 to 12.1)	-13.3 (-35.3 to 28.6)	-25.0 (-46.3 to 0.0)	-26.7 (-43.7 to -6.7)
	50-64	0.0 (-33.3 to 16.7)	0.0 (-21.4 to 28.2)	7.7 (-18.2 to 46.2)	-25.0 (-41.7 to 4.2)	-31.0 (-46.5 to -7.4)
	65-74	-15.5 (-41.5 to 25.5)	-6.1 (-24.6 to 21.5)	-8.3 (-31.2 to 50.0)	-16.7 (-35.5 to 18.2)	-40.0 (-61.5 to -14.9)
75+	-8.9 (-29.2 to 10.1)	-26.3 (-42.6 to -12.2)	0.0 (-25.0 to 37.5)	-10.0 (-35.0 to 5.7)	-43.4 (-55.0 to -26.3)	
Hispanic	0-4	-13.6 (-27.1 to -2.1)	-44.6 (-51.7 to -33.1)	-5.5 (-18.8 to 18.6)	-18.2 (-26.2 to -4.2)	-59.4 (-68.4 to -49.3)
	5-17	-13.9 (-29.0 to 3.2)	-37.1 (-45.8 to -21.0)	-7.5 (-21.9 to 11.8)	-13.9 (-27.3 to 3.3)	-44.1 (-55.0 to -31.1)
	18-49	-15.9 (-28.0 to -7.5)	-40.7 (-44.5 to -36.9)	-12.3 (-21.4 to 2.0)	-22.5 (-31.2 to -13.9)	-63.4 (-67.4 to -59.0)
	50-64	-8.1 (-19.2 to 1.2)	-37.6 (-45.3 to -26.4)	-3.4 (-16.9 to 8.5)	-34.2 (-39.0 to -20.7)	-64.6 (-70.6 to -61.7)
	65-74	-21.0 (-30.5 to -2.4)	-12.0 (-29.1 to 6.1)	9.1 (-13.1 to 29.3)	-21.6 (-32.4 to -4.9)	-46.6 (-53.2 to -39.1)
75+	-14.0 (-24.4 to -3.9)	-4.1 (-14.2 to 14.9)	7.5 (-8.5 to 34.1)	-14.3 (-26.6 to 4.0)	-29.6 (-39.4 to -12.6)	

**Table 3.:** Table of the percent difference in the number of hospitalizations compared to the baseline scenario.