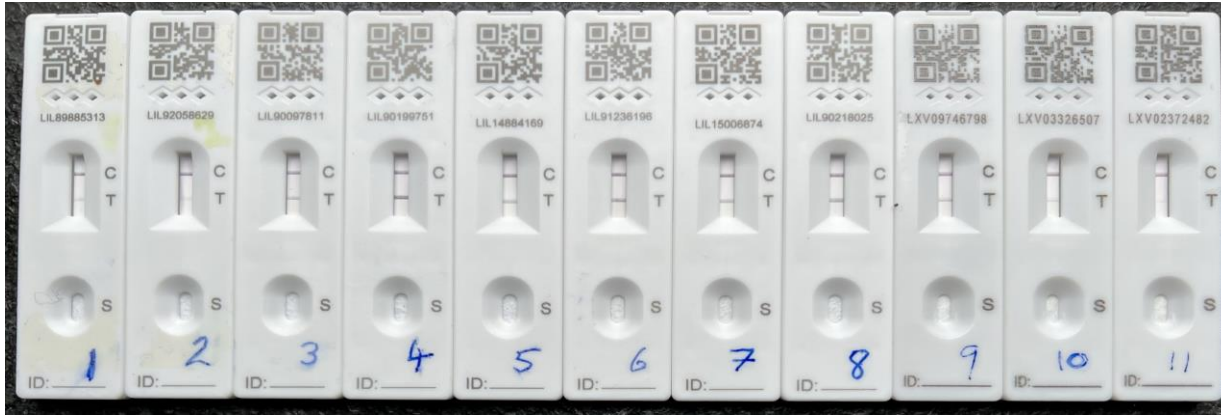


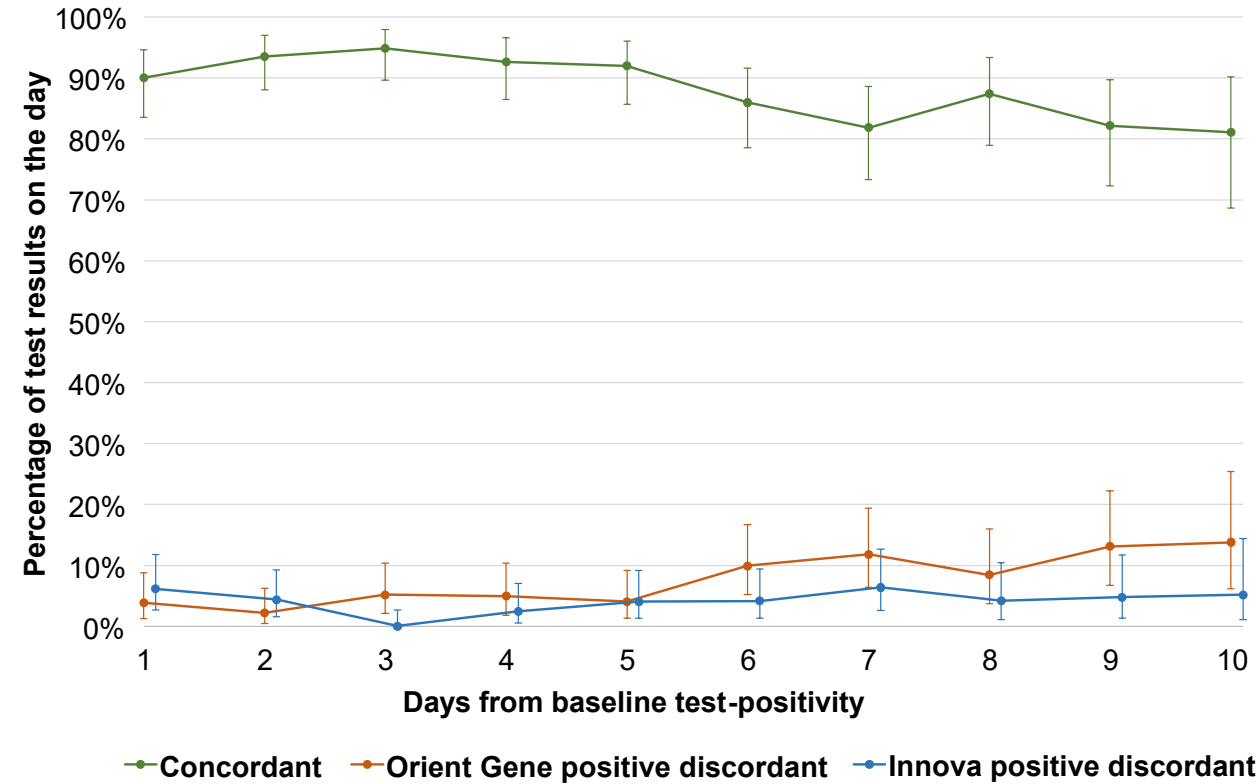
- December 2021: Omicron → **Dangerous** levels of **key worker absence** across the UK
- Urgent response: **Use SARS-CoV-2 lateral flow self-test kits smarter to quicken safe return to work**



- Does dual kit testing **detect more** ongoing infection than single kit?
- Is dual kit testing **acceptable** to users?



## Random order, open label dual lateral flow test trial in NHS hospital staff February-June 2022, Liverpool, UK



- **Improved detection**
- 91% found it **easy**; 66% **preferred** dual vs single test

Nested study of **viral culture** from swabs taken Days 5-7



<https://www.medrxiv.org/content/10.1101/2024.04.04.24305332v1>