

Plasma p-tau₂₁₇ predicts cognitive impairments up to ten years before onset in normal older adults

Yara Yakoub, BSc¹; Fernando Gonzalez-Ortiz, MD²; Nicholas J. Ashton, PhD^{2,3,4,5}; Christine Déry, MSc¹; Cherie Strikwerda-Brown, PhD^{1,6}; Frédéric St-Onge, PhD¹; Valentin Ourry, PhD¹; Michael Schöll, PhD^{2,3,7}; Maiya R. Geddes, MD^{8,9,10}; Simon Ducharme, MD, MSc^{1,8}; Maxime Montembeault, PhD^{1,11}; Pedro Rosa-Neto, MD^{8,10}; Jean-Paul Soucy, MD, MSc⁸; John C.S. Breitner, MD, MPH^{1,11}; Henrik Zetterberg, MD, PhD^{2,7,12,13,14,15}; Kaj Blennow, MD, PhD^{2,12}; Judes Poirier, PhD^{1,11}; Sylvia Villeneuve, PhD^{1,8,11}; PREVENT-AD Research Group.

¹ Douglas Mental Health University Institute, Centre for Studies on the Prevention of Alzheimer's Disease (StoP-AD), Montreal, Quebec, Canada

² Department of Psychiatry and Neurochemistry, Institute of Neuroscience and Physiology, The Sahlgrenska Academy, University of Gothenburg, Gothenburg, Sweden

³ Centre for Age-Related Medicine, Stavanger University Hospital, Stavanger, Norway.

⁴ King's College London, Institute of Psychiatry, Psychology & Neuroscience, Maurice Wohl Clinical Neuroscience Institute, London, UK

⁵ NIHR Biomedical Research Centre for Mental Health & Biomedical Research Unit for Dementia at South London & Maudsley NHS Foundation, London, UK

⁶ School of Psychological Sciences, The University of Western Australia, Perth, Australia

⁷ Department of Neurodegenerative Disease, UCL Queen Square Institute of Neurology, University College London, London, UK

⁸ Montreal Neurological Institute, McGill University, Montreal, Quebec, Canada

⁹ Massachusetts Institute of Technology, Cambridge, MA, USA

¹⁰ McGill Center for Research Studies in Aging, Montreal, Quebec, Canada

¹¹ Department of Psychiatry, McGill University, Montreal, Quebec, Canada

¹² Clinical Neurochemistry Laboratory, Sahlgrenska University Hospital, Mölndal, Sweden

¹³ UK Dementia Research Institute at UCL, London, UK

¹⁴ Hong Kong Center for Neurodegenerative Diseases, Clear Water Bay, Hong Kong, China

¹⁵ UW Department of Medicine, School of Medicine and Public Health, Madison, WI, USA

Correspondence

Sylvia Villeneuve, Douglas Mental Health University Institute, Centre for Studies on the Prevention of Alzheimer's Disease (StoP-AD), Perry Pavilion Room E3417.1, 6875 Boulevard LaSalle, Montreal, QC H4H1R3, Canada. Email: Sylvia.villeneuve@mcgill.ca

Key words: MCI, PET, CSF, Plasma, Amyloid, Tau

Total word count:

Key Points: 98

Abstract: 350

Manuscript: 2977

The manuscript includes 32 references, 1 Table and 4 Figures, supplementary material.

Mme. Yakoub yara.yakoub@mail.mcgill.ca

Dr. Gonzalez-Ortiz fernando.gonzalez.ortiz@gu.se

Dr. Ashton nicholas.ashton@gu.se

Mme. Christine Déry christine.dery.comtl@ssss.gouv.qc.ca

Dr. Strikwerda-Brown cherie.strikwerda@gmail.com

Dr. St-Onge frederic.st-onge@mail.mcgill.ca

Dr. Ourry valentin.ourry@gmail.com

Dr. Schöll michael.scholl@neuro.gu.se

Dr. Geddes majya.geddes@mcgill.ca

Dr. Ducharme simon.ducharme@mcgill.ca

Dr. Montembeault maxime.montembeault@mcgill.ca

Dr. Rosa-Neto pedro.rosa@mcgill.ca

Dr. Soucy jean-paul.soucy@McGill.Ca

Dr. Breitner john.breitner@mcgill.ca

Dr. Zetterberg henrik.zetterberg@clinchem.gu.se

Dr. Blennow kaj.blennow@neuro.gu.se

Dr. Poirier judes.poirier@mcgill.ca

Dr. Villeneuve Sylvia.villeneuve@mcgill.ca

Key Points (98/100)

Question: Can plasma p-tau217 serve as a prognostic indicator for identifying cognitively unimpaired (CU) individuals at risk of developing cognitive impairments (CI)?

Findings: In a longitudinal cohort of CU individuals with a family history of sporadic AD, almost all individuals with abnormal plasma p-tau217 concentrations developed CI within 10 years, regardless of plasma amyloid levels. Similar findings were obtained with CSF p-tau217 and tau-PET. Fluid p-tau217 biomarkers had the main advantage over PET of identifying five times more participants with elevated tau.

Meaning: Elevated plasma p-tau217 levels in CU individuals strongly indicate future clinical progression

Abstract (350/350)

Importance: Positron emission tomography (PET) biomarkers are the gold standard for detection of Alzheimer amyloid and tau *in vivo*. Such imaging can identify cognitively unimpaired (CU) individuals who will subsequently develop cognitive impairment (CI). Plasma biomarkers would be more practical than PET or even cerebrospinal fluid (CSF) assays in clinical settings.

Objective: Assess the prognostic accuracy of plasma p-tau217 in comparison to CSF and PET biomarkers for predicting the clinical progression from CU to CI.

Design: In a cohort of elderly at high risk of developing Alzheimer's dementia (AD), we measured the proportion of CU individuals who developed CI, as predicted by A β (A+) and/or tau (T+) biomarker assessment from plasma, CSF, and PET. Results from each method were compared with (A-T-) reference individuals. Data were analyzed from June 2023 to April 2024.

Setting: Longitudinal observational cohort.

Participants: Some 228 participants from the PREVENT-AD cohort were CU at the time of biomarker assessment and had 1 - 10 years of follow-up. Plasma was available from 215 participants, CSF from 159, and amyloid- and tau-PET from 155. Ninety-three participants had assessment using all three methods (main group of interest). Progression to CI was determined by clinical consensus among physicians and neuropsychologists who were blind to plasma, CSF, PET, and MRI findings, as well as *APOE* genotype.

Exposures: Plasma A $\beta_{42/40}$ was measured using IP-MS; CSF A $\beta_{42/40}$ using Lumipulse; plasma and CSF p-tau217 using UGOT assay. A β -PET employed the ^{18}F -NAV4694 ligand, and tau-PET used ^{18}F -flortaucipir.

Main Outcome: Prognostic accuracy of plasma, CSF, and PET biomarkers for predicting the development of CI in CU individuals.

Results: Cox proportional hazard models indicated a greater progression rate in all A+T+ groups compared to A-T- groups (HR = 6.61 [95% CI = 2.06 – 21.17] for plasma, 3.62 [1.49 – 8.81] for CSF and 9.24 [2.34 – 36.43] for PET). The A-T+ groups were small, but also characterized with individuals who developed CI. Plasma biomarkers identified about five times more T+ than PET.

Conclusion and relevance: Plasma p-tau217 assessment is a practical method for identification of persons who will develop cognitive impairment up to 10 years later.

Introduction (326)

The protein pathologies that define Alzheimer's disease (AD) are aggregates of amyloid-beta ($A\beta$) into plaques, neurofibrillary tangles of hyper-phosphorylated (p) tau, and dystrophic neurites. $A\beta$ and tau start to aggregate years before the onset of the clinical disease.¹ The first two protein components can be measured *in vivo* using positron emission tomography (PET), cerebrospinal fluid (CSF) assays and, more recently blood-based biomarkers in plasma.^{2,3} While PET had recently been found to be valuable at identifying cognitively unimpaired (CU) individuals who developed cognitive impairments (CI) within 3-5 years,^{4,5} the predictive value of plasma and CSF biomarkers for this purpose is unknown.

Imaging and fluid biomarkers of $A\beta$ and tau reflect different biochemical pools of a given protein; fluid biomarkers capture soluble and diffusible proteins, while PET images capture insoluble aggregates that are characteristic of later stages of the disease.⁶ Consequently, $A\beta$ and tau fluid biomarker abnormalities occur prior to the development of corresponding PET abnormalities,⁷⁻⁹ so that positive fluid biomarker results should logically reveal disease pathogenesis earlier before clinical onset than positive PET results.

With the emergence of disease-modifying therapies, it has become urgent to find low-cost and widely available biomarkers that can identify CU who are at imminent risk of developing CI. By the time someone has CI symptoms, the pathology is already well advanced, and $A\beta$ may no longer be the optimal target.¹⁰ Adverse effects related to anti-amyloid treatments are also more prevalent at more advanced disease stages.¹¹ Prognostic information is therefore of critical value to inform treatment decisions or to establish advance directives.

We assessed the prognostic value of novel plasma and CSF p-tau217 assays as predictors of progression of CU individuals to later CI. We predicted that many CU individuals with abnormal plasma, CSF or PET tau biomarker results would develop CI over a brief interval of years and that plasma and CSF biomarkers would show an advantage over PET by identifying more participants with predictive abnormal tau biomarkers.

Methods (627)

We included 228 participants from the PREVENT-AD cohort with available plasma ($A\beta_{42/30}$ and p-tau 217), CSF ($A\beta_{42/40}$ and p-tau217) or PET ($A\beta$ and tau PET) biomarkers who were CU when enrolled in the study and at the time of the biomarkers assessment, and who had at least one year of cognitive follow-up upon biomarkers assessment (see Supplement). Overall, 215 participants had plasma, 159 had CSF and 155 had both $A\beta$ - and tau-PET available. For 93 participants, the main group of interest, all biomarkers were available (**Figure 1, eFigure 1** in Supplement). The demographic and clinical information of the 93 participants with all biomarkers can be found in **Table 1**. Demographic characteristics of plasma, CSF and PET full samples can be found in Supplement (**eTable 1**). Written informed consent was obtained from all participants and all research procedures were approved by the Institutional Review Board at McGill University and complied with the ethical principles of the Declaration of Helsinki. A detailed description of the PREVENT-AD cohort is available elsewhere.¹²

Clinical outcomes

The cognitive performances of participants whose performance deviated by more than 1 standard deviation from demographically stratified norms on at least one of the five composite

subscale score of the Repeatable Battery for the Assessment of Neuropsychological Status (RBANS), on the Trial Making Test, the Stroop, or the Rey- Auditory Verbal Learning Test, were reviewed in multidisciplinary meetings composed off neuropsychologists, neuropsychiatrists, and neurologists. The CI classification was based on an objective decline on all available [between 2 and 10] subjective and objective cognitive evaluations and blind to plasma, CSF, PET, MRI and APOE genotype information.⁴

Biomarker measurements and AT classification

Plasma $A\beta_{40}$ and $A\beta_{42}$ concentrations were measured using ultrasensitive immunoprecipitation coupled with mass spectrometry (IP-MS) technique¹³; CSF $A\beta_{40}$ and $A\beta_{42}$ were analyzed using LUMIPULSE G-automated immunoassay.¹⁴ Plasma and CSF p-tau217 was measured using an in-house Simoa platform developed at the Clinical Neurochemistry Laboratory, University of Gothenburg.¹⁵ $A\beta$ -PET was performed using ^{18}F -NAV4694 and tau-PET using ^{18}F -flortaucipir.⁴ For the binary analyses $A\beta$ -PET positivity was set at 1.27 SUVR and established based on the global neocortical amyloid-PET retention in the lateral and medial frontal, parietal, and lateral temporal regions of PREVENT-AD participants. Tau-positivity was set at 1.29 SUVR in a temporal meta-ROI, and was established using 2SD from the mean of CU PREVENT-AD $A\beta$ -PET negative individuals.¹⁶ We used the pre-established thresholds of 0.09 for plasma $A\beta_{42/40}$; and 0.072 for CSF $A\beta_{42/40}$.^{13,14} Thresholds for plasma and CSF p-tau217 were set at 2 SD from the mean of CU PREVENT-AD $A\beta$ -PET negative individuals (plasma p-tau217: 3.98 pg/mL; CSF p-tau217: 400.19 pg/mL).¹⁷ **eTables 8-13** further show the sensitivity, specificity, negative predictive value and positive predictive value of all other possible thresholds.

Statistical analyses

Demographic and clinical variables by biomarker and by A/T classification were compared using Kruskal-Wallis tests followed by Dunn's post-hoc test for continuous variables and Fisher exact tests for categorical variables. Cox proportional hazard models were used to assess the risk of CI progression in by A/T groups and linear mixed models to assess longitudinal cognitive changes across the biomarker groups. We then tested the cognitive performance over time across the different biomarker groups using linear mixed-effects models and sex and education as potential confounders. Spearman's rank test was used to evaluate the association between the biomarkers. Logistic regressions were used to test the performance of plasma, CSF and PET biomarkers as continuous variables in discriminating CI participants. Receiver operating characteristic (ROC) analyses and the resulting areas under the curve (AUCs) were also computed to assess the biomarker accuracy in distinguishing between CU and CI participants, alone or when combined. Model fits were compared using Vuong test. Two-sided p values < 0.05 were deemed significant. The analyses were performed using R programming language.

Results (1412)

Participants

A total of 62 participants (27%) developed CI during the study follow-up (31% in the subsample with all biomarkers). The mean age of the full sample at baseline was 63 years, 72 % were female and 39 % were *APOE* ϵ 4 carriers (**Table 1**). The full sample was comparable to the 93 participants of interest for which we have all biomarkers. The breakdown of the different A/T biomarker demographic and clinical profiles in the full and subsamples is presented in **eTables 1-7**. The mean cognitive follow-up after plasma classification was 5.65 years (SD = 1.45, range 1.01

– 10.47), 5.57 years (SD = 1.48, range 1.00 – 10.00) after CSF classification, and 4.18 years (SD = 1.49, range 1.01 – 6.07) after PET classification. Restricting these range for the 93 participants gave similar follow-up length (plasma 5.85 years, SD 1.26, range 2.10 – 10.47; CSF 5.69 years, SD 1.18, range 2.08 – 9.74, PET 4.25 years, SD 1.47, range 1.11 – 6.07). The full cognitive follow-up length, which for most participants included evaluations prior to the biomarker assessment, was 7.63 years (SD = 1.94, range: 1.00 – 10.47) for the plasma subsample, 7.59 years (SD = 1.89, range: 1.89-10.47) for the CSF subsample, 8.11 (SD = 1.76, range: 1 – 10.49) for the PET subsample and 8.04 years (SD 1.71, range 2.99 – 10.47) for the 93 participants with all biomarkers.

A/T classification across biomarkers.

Using $A\beta_{42/40}$ and p-tau217 plasma biomarkers to classify participants, 9% (8/93) were classified as A+T+, 35% (33/93) as A+T-, 3% (3/93) as A-T+ and 53% (49/93) as A-T-. Using $A\beta_{42/40}$ and p-tau217 CSF biomarkers, 15% (14/93) were classified as A+T+, 3% (3/93) as A+T-, 2% (2/93) as A-T+ and 80% (74/93) as A-T-. Finally, using PET biomarkers, 3% (3/93) were classified as A+T+, 30% (28/93) as A+T-, 1% (1/93) as A-T+ and 66% (61/93) as A-T-. These numbers were not statistically different to the proportion found in the full sample (Fisher's exact $p > 0.05$) and it is also similar to what has been found in other PET cohorts.^{4,5}

Rate of progression from CU to CI across A/T groups when defined using fluid versus neuroimaging biomarkers.

Eighty-eight percent (7/8) of the A+T+_{plasma} group developed CI compared with 36% (12/33) in the A+T-_{plasma} group, 100% (3/3) in the A-T+_{plasma} group and 14% (7/49) in the A-T-_{plasma} group (**Figure 2A-C**). The proportion of CU developing CI was higher in the A+T+ group

when compared with A-T-_{plasma} and A+T-_{plasma} groups ($p < 0.001$, $p = 0.01$). When the groups were classified using CSF, 86% (12/14) of the A+T+_{CSF}, 33% (1/3) of the A+T-_{CSF} group, 50% (1/2) of the A-T+ and 20% (15/74) of the A-T-_{CSF} group developed CI (**Figure 2B**). An increased CU to CI progression rate was found in the A+T+_{CSF} group when compared A-T-_{CSF}, but no differences were found when compared to A+T-_{CSF} group (Fisher's exact $p < 0.001$ and $p = 0.12$ respectively). In the PET groups, 100% (3/3) of A+T+_{PET} biomarker group, 46% (13/28) of the A+T-_{PET} group, 100% (1/1) of the A-T+ and 20% (12/61) of the A-T-_{PET} group progressed to MCI (**Figure 2C**). The A+T+_{PET} and A+T-_{PET} groups were associated with increased progression to CI when compared with A-T-_{PET} (Fisher's exact $p = 0.01$, $p = 0.01$ respectively). Results were replicated when taking advantage of all available data, with all A+T+ groups showing a higher percentage of progression when compared to their respective A-T- groups (the % of CU who progressed to CI was 76 with plasma, 72 with CSF and 100% with PET in the A+T+ compared to 18-21% in the A-T- groups, **eFigure 2** in Supplement).

One hundred twenty-eight of these 155 PET participants were included in a previously published study⁴ that showed that 55% of the participants classified as A+T+_{PET}, 9% of A+T-_{PET} and 9% of A-T-_{PET} developed CI when followed for a mean of 3.16 years after the A/T classification. All (100%) A+T+, 42% of A+T-_{PET} and 19% of the A-T-_{PET} groups have now developed CI after an additional 2.4 year of cognitive follow-up (**eFigure 3** in Supplement).

Cox proportional hazard models showed a higher risk of progression from CU to CI among the A+T+_{plasma} and A-T+_{plasma} (hazard ratios (HR) = 6.61, $p = 0.001$, 95%CI = 2.06 - 21.17; HR = 6.25; $p = 0.01$, 95%CI = 1.53- 25.54; model concordance value (model fit) = 0.69; SE = 0.07; **Figure 2D & G**) when compared to A-T-_{plasma} (reference) group. In the CSF sample, we found an increased in the risk among A+T+_{CSF} and A-T+_{CSF} (HR = 3.62, $p = 0.005$, 95%CI = 1.49 – 8.81;

HR = 44.46, $p = 0.004$, 95%CI = 3.44 – 573.91; model concordance value = 0.71; SE = 0.07; **Figure 2E & H**) compared to A-T_{-CSF} group. Finally, A+T_{+PET} participants exhibited a higher risk of CI progression compared to A-T_{-PET} (HR = 9.24, $p = 0.001$, 95% CI = 2.34 – 36.43; model concordance value = 0.70; SE = 0.06; **Figure 2F & I**). The A-T₊ group was not included in the analyses given that only one participant was classified as A-T₊_{PET}, this participant nevertheless developed CI during the study follow-up. All results were replicated in the larger sub-cohorts and giving the increased number of participants, the A+T_{-PET} now showed an increased risk of progression when compared to A-T_{-PET} group (HR = 2.75, $p = 0.002$, 95% CI = 1.43 – 5.27).

Cognitive trajectories

We also investigated the longitudinal cognitive performance of participants within the AT biomarker groups while taking advantage of all cognitive time points, including the ones before the biomarker classifications were available. The A+T_{+plasma} and A-T_{+plasma} groups demonstrated a steeper cognitive decline compared to A-T_{-plasma} (reference) group ($\beta = -0.79$, $p = 0.04$, SE = 0.39, %95CI = -1.56 – -0.02; $\beta = -1.63$, $p = 0.004$, SE = 0.55, 95% CI = -2.72 – -0.54; $R^2 = 0.08$; **Figure 2J**) while no differences was observed between the A-T_{-plasma} and A+T_{-plasma} group ($\beta = 0.06$, $p = 0.74$, SE = 0.19, %95CI = -0.32 – 0.46). The A+T_{+CSF} group showed faster decline over time compared to A-T_{-CSF} ($\beta = -1.22$, $p < 0.001$, SE = 0.27, 95%CI = -1.75 – -0.70; $R^2 = 0.13$, **Figure 2K**), but no difference was found between the reference group and A+T_{-CSF} nor the A-T_{+CSF} groups ($\beta = 0.47$, $p = 0.38$, SE = 0.54, 95% CI = -0.59 – 1.54; $\beta = -0.01$, $p = 0.97$, SE = 0.49, 95%CI = -1.00 – 0.97). The A+T_{+PET} group demonstrated a steeper cognitive decline compared to A-T_{-PET} ($\beta = -1.85$, $p = 0.001$, SE = 0.55, 95%CI = -2.94 – -0.76; **Figure 2L**). The A+T_{-PET} group demonstrated no differences when compared to A-T_{-PET} group ($\beta = -0.34$, $p = 0.09$, SE = 0.19,

95%CI = -0.73 – 0.06).-Identical results were found in the full sample (see Supplement for more details).

Concordance between different biomarkers modalities

We found weak correlation between plasma $A\beta_{42/40}$ and $A\beta$ -PET ($R = -0.35$, $p < 0.001$, **Figure 3A**), and between plasma p-tau217 and tau-PET ($R = 0.38$, $p < 0.001$, **Figure 3B**), but moderate correlations between plasma and CSF $A\beta_{42/40}$ ($R = 0.48$, $p < 0.001$, **Figure 3C**) and plasma and CSF p-tau217 ($R = 0.51$, $p < 0.001$, **Figure 3D**). Similarly, CSF $A\beta_{42/40}$ and CSF p-tau217 were moderately correlated with both $A\beta$ and tau-PET ($R = -0.58$; $R = 0.40$; $p < 0.001$ respectively, **Figure 3E&F**). See **eFigure 4** supplementary results for the concordance when stratified by +/- status and for the percentage of participants who progressed to CI by biomarkers status.

Direct comparisons between fluid and imaging biomarkers.

All ROC curve predictive models were similar when compared using Delong test, with AUC ranging from .66 to .75 for $A\beta$, from .74 - .75 for tau and between .77 to .82 for their combinations (**Figure 4**). Comparing the performance of $A\beta$ models, $A\beta$ -PET showed the best model fit when compared to plasma and CSF $A\beta_{42/40}$ models ($p < 0.05$). Tau models and the combination of tau + $A\beta$ models were comparable using Vuong test.

Finally, the biomarker cutoffs used in **Figure 1** gave good to excellent specificity (97% for plasma, 95% for CSF and 100% for PET), but low sensitivity (34%, 45% and 17% respectively) at identifying CU who will develop CI. Except for CSF, $A\beta$ biomarkers cutoffs had low specificity

(66% for plasma, 94% for CSF and 77% for PET), and low sensitivity (65%, 45% and 52% respectively).

Discussion (619)

Is still a matter of debate if CU individuals with A β and tau are condemned to progress to clinical AD. We found that all individuals with abnormal tau PET values, and almost all individuals with plasma p-tau217 values (between 75-90% depending on the sample) developed CI during a 10-year follow-up. When individuals were classified based on A β and tau biomarkers, higher clinical progression rate was found for all A+T+ groups compared to their respective A+T- group, with HRs up to 6.61, 3.62 and 9.24 for plasma, CSF, and PET respectively. Plasma biomarkers had the main advantages over PET of identifying about five time more T+ individuals. While these results suggest that p-tau217 can be used as a stand-alone test to identify CU who will develop CI, plasma biomarkers are however known to be more prone to measurement errors, matrix effects, and batches to batches variability,^{18,19} limitations that will need to be considered before implementing plasma p-tau217 into memory clinics. Given the possible distress cause by the disclosure of such results, we also strongly advocate for restricting the use of plasma p-tau217 to specialized clinics with available counseling until a drug is approved for preclinical AD.

PET biomarkers are expensive and not widely available. Robust and accurate blood-based markers for AD are needed for clinical evaluation, trial recruitment and to identify individuals who could benefit from disease modifying therapies.²⁰⁻²³ Plasma p-tau217 has been found to differentiate CU from individuals with clinical AD,²⁴ it can detect AD pathology in individuals with mild CI,²⁵ and it correlates with A β PET, tau PET and cognitive decline in CU participants.

²⁶⁻³⁰ Our prospective study shows that plasma p-tau217 can also be used to predict the development of CI in CU individuals' years before cognitive onset.

A β did not improve the predictive value of the tau biomarkers, which can mainly be explained by the fact that almost all T+ individuals were also A+. As for individuals abnormal A β but normal tau biomarkers, their risk of progression to CI was increased when classified with PET in comparison to the A-T-PET group. Furthermore, 128 participants from this study were included in a previous publication in which only 9% of the A+T- participant had developed CI at the time,⁴ from these A+T- individuals 42% have now developed CU, suggesting that A+T- were just further away on the AD spectrum.

The main limitation of this study, which is also its main strength, is that unimpaired vs impaired cognitive classification was done blind to *APOE* status, MRI and CSF and PET biomarkers results. Not all CI individuals are therefore on the path towards AD, which explains why some A-T- individuals developed CI.³¹ One other limitation is the low sample size in the A+T+ groups, which was nevertheless similar to what was found in previous PET studies.^{4,5} The low racial and ethnical diversity of our population should also be noted as the findings may not be applicable to populations with greater ethnic diversity. The collection of plasma and CSF markers also often preceded PET measurements by a year or two, which prevent us from drawing strong conclusions about which biomarker predict a more imminent risk of progression. Finally, one contentious point while dichotomizing biomarkers is that various cutoff strategies might produce different results. This dichotomization is however needed to guide treatment decision.

In this longitudinal multimodal biomarker study spanning more than 10 years, 27% developed CI based on a multidisciplinary classification consensus meeting blind to biomarkers and *APOE* genotype information. While not interchangeable, fluid and PET biomarkers of AD

pathology are both extremely valuable at identifying individuals who will develop CI with almost all individuals with p-tau217 abnormal values developing CI within a 10-year follow-up.

FIGURES & Tables

Figure 1. Flowchart of the inclusion process

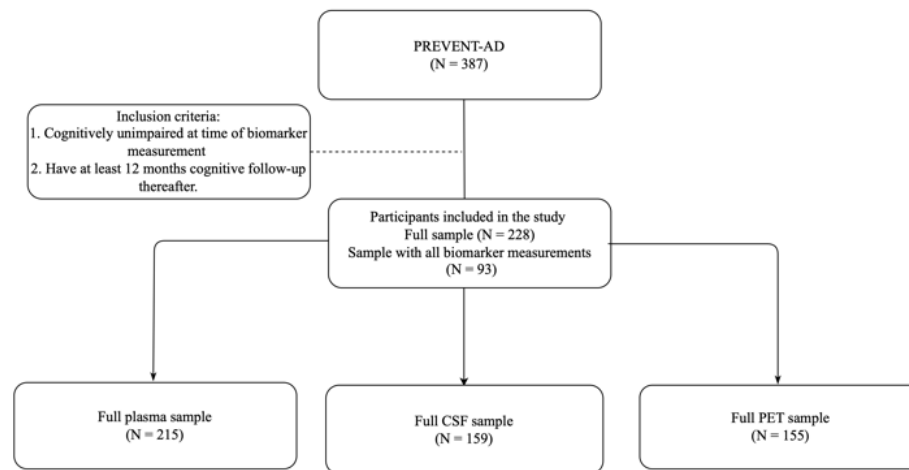


Figure 1. Flowchart of included participants for each plasma, PET and CSF biomarkers subsamples. We included a total of 215 participants from plasma sample; 159 participants from the CSF sample; and 155 participants from PET sample. A total of 93 participants that have all biomarker measurements were included in the main analyses. Participants were excluded if they did not meet one of the following eligibility criteria: 1). Being cognitively unimpaired at the time of the biomarker measurement, 2). Having at least 12 months of cognitive follow-up thereafter.

Figure 2. Clinical Progression to Cognitive Impairment (CI) across plasma, CSF and PET AT biomarker groups.

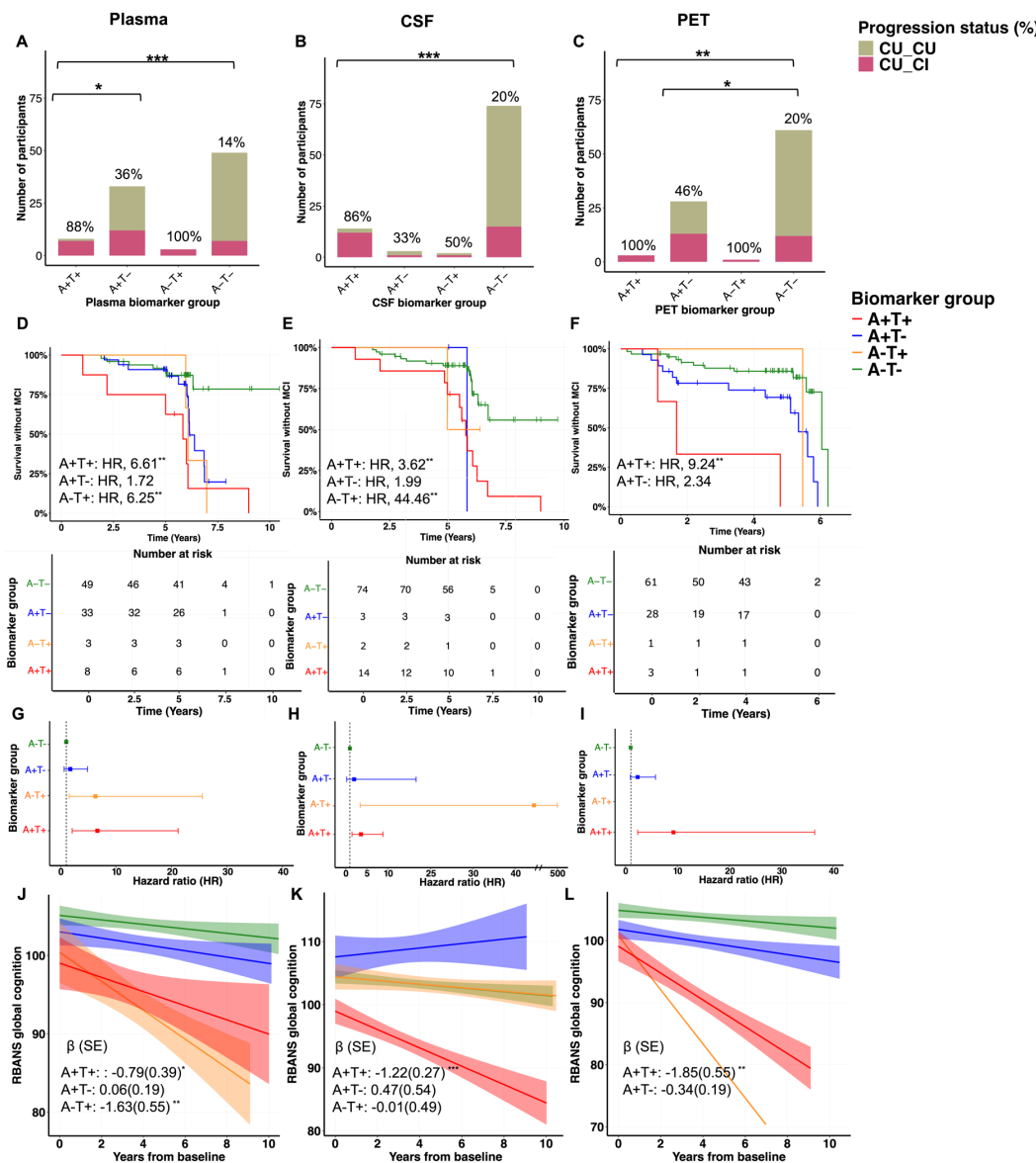


Figure 2. (A-C) Bar graphs represent the proportion of participants who developed CI across A) plasma $A\beta_{42/40}$ and p-tau217; B) CSF $A\beta_{42/40}$ and p-tau217; and C) PET biomarker profiles measured with ^{18}F -NAV4694 and ^{18}F -Flortaucipir. **D-F).** Survival curves reflecting the progression to CI across D) plasma, E) CSF and F) PET biomarker groups. The vertical ticks on the curves refer to the censored participants, i.e., the loss of follow-up of the individuals. (G-I)

Forest plots showing HR and 95% confidence intervals from the survival analyses. (J-L) Linear mixed effects models show the total cognitive score of RBANS over time across J) plasma, K) CSF and L) PET biomarker profiles. The linear mixed effects models analyses included annual cognitive data before and following plasma, CSF, and PET measures. Models included age at baseline, sex, and years of education as covariates. *Notes:* CU_CU = cognitively unimpaired older adults at the time of the biomarker measurement and remained cognitively unimpaired during follow-up; CU_CI = cognitively unimpaired older adults at the time of the biomarker measurement, who progressed to cognitive impairment during follow-up. The A-T- group was used as reference. The A-T+ in the PET biomarker group is displayed for visualization purposes but was not included in the statistical analyses. HR = hazard ratios; * $P < 0.05$, ** $P < 0.01$, *** $P < 0.001$.

Figure 3. Scatterplots reflecting concordance status between plasma, CSF and PET A β and tau biomarkers.

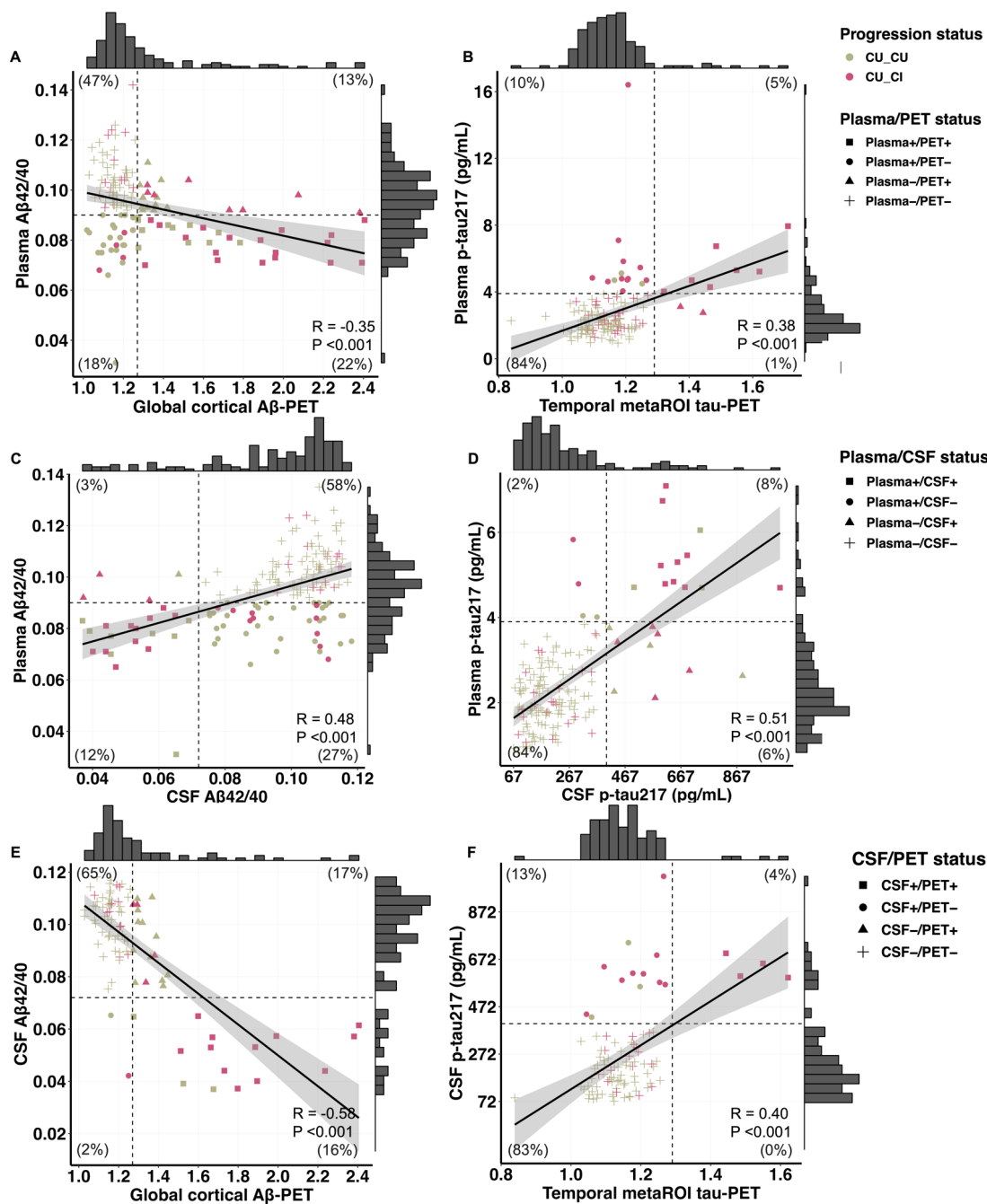


Figure 3 Correlation plots of A) plasma $A\beta_{42/40}$ vs $A\beta$ -PET biomarkers; B). plasma p-tau217 vs metaROI tau-PET SUVR values; C) plasma $A\beta_{42/40}$ vs CSF $A\beta_{42/40}$ biomarkers; D) plasma p-tau217 vs CSF p-tau217 biomarkers; E) CSF $A\beta_{42/40}$ vs $A\beta$ -PET biomarkers; F) CSF p-tau217 vs tau-PET biomarkers. Colors indicate the cognitive status of participants and symbols indicate the

status of participants as being A β /tau positive or negative, vertical and horizontal dashed lines correspond to Plasma, PET and CSF biomarker cutoff values, respectively. *Notes:* we used 0.09 for plasma A $\beta_{42/40}$; 0.072 for CSF A $\beta_{42/40}$; 1.27 SUVR for A β -PET; 3.98 for plasma p-tau217; 400.19 for CSF p-tau217; and 1.29 for tau-PET positivity. The total number of participants was n = 143 for individuals with both plasma and PET measurements, n = 158 for participants with both plasma and CSF measurements and n = 93 for participants with both CSF and PET.

Figure 4. Discriminative accuracy of Plasma, CSF and PET biomarkers for identifying individuals who will develop cognitive impairment later

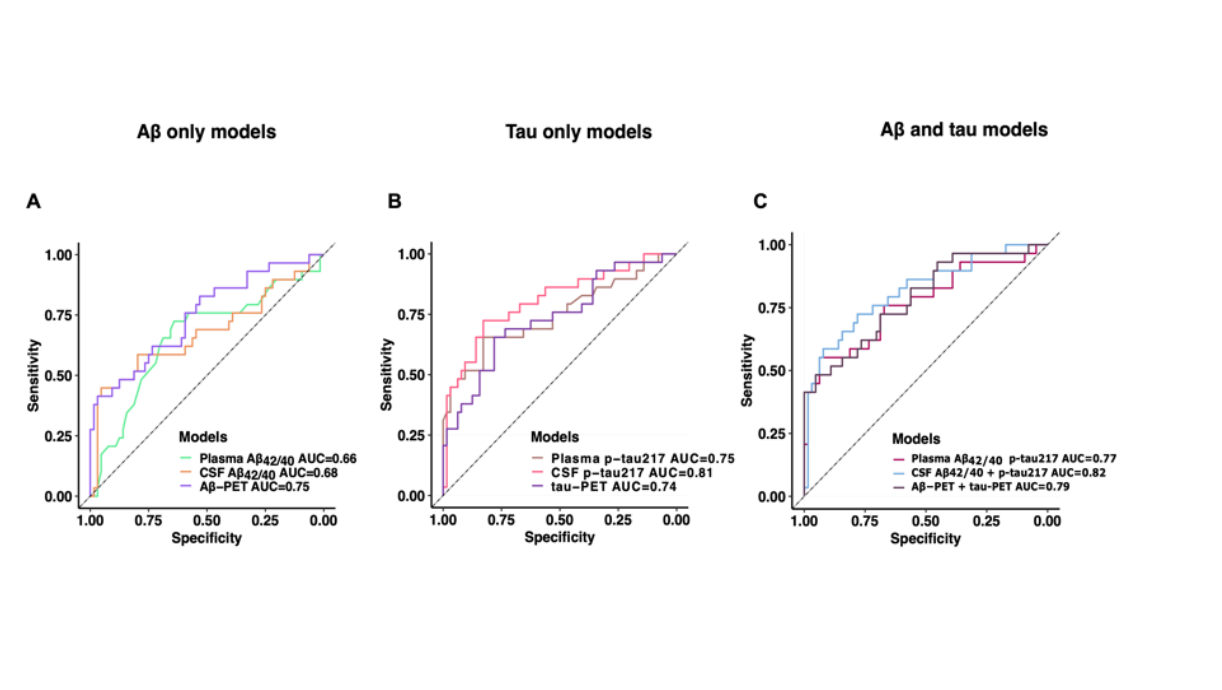


Figure 4. Receiver Operating Characteristic (ROC) curves and corresponding areas under the curve (AUC) showing the discriminative ability of A) individual plasma, CSF, and PET A β models; B) individual plasma, CSF, and PET tau models and C) the combination of plasma A $\beta_{42/40}$, CSF A $\beta_{42/40}$ and A β -PET biomarkers with plasma p-tau217, CSF p-tau217 and tau-PET in

distinguishing between individuals who remained cognitively normal versus those who develop cognitive impairment.

Table.1 Sample Demographics

Demographics	Full sample (n = 228)	Subsample (n = 93)	P value
Age at baseline, years	63.33 (4.86)	63.19 (4.48)	0.91
Age at biomarker classification, years	65.22 (5.30)	65.37 (4.77)	0.67
(Plasma, CSF, PET)	64.75 (5.26)	65.39 (4.78)	0.15
Sex, F (%)	165 (72)	65 (70)	0.25
Education, years	15.40 (3.30)	14.85 (2.90)	0.68
APOE ε4 carriers, n (%)	90 (39)	39 (42)	0.20
Global amyloid SUVR	1.31 (0.30)	1.30 (0.27)	0.71
Temporal meta-ROI SUVR	1.16 (0.11)	1.16 (0.11)	0.95
Plasma Aβ_{42/40}	0.09 (0.02)	0.09 (0.02)	0.99
CSF Aβ_{42/40}	0.09 (0.01)	0.09 (0.02)	0.41
Plasma p-tau₂₁₇	2.63 (1.56)	2.60 (1.25)	0.23
CSF p-tau₂₁₇ (pg/ml)	251.70 (173.65)	268.10 (187.95)	0.93
MoCA score /30^a	28.13 (1.58)	28.06 (1.46)	0.63
RBANS global score	101.85 (9.98)	101.84 (9.75)	0.57

Data presented as mean (standard deviation), except for categorical variables where the count and percentage are presented. Kruskal-Wallis test followed by Dunn's test or Fisher's test (where appropriate) were used to compare the demographic characteristics between the full sample (n = 228) and the subsample (n = 93) participants with all biomarker measurements. Age at baseline and time of plasma, CSF collection and PET scans are presented. RBANS values are shown at

baseline. MoCA scores were collected at entry into the program. ^a MoCA score was missing for one participant in the sample. Abbreviations: MoCA = Montreal Cognitive Assessment; F = female; APOE = apolipoprotein E; SUVR = Standardized Uptake Value Ratio; NA = not applicable; RBANS = Repeated Battery for for the Assessment of Neuropsychological Status.

Acknowledgements

Funding/Support

The authors acknowledge all the PREVENT-AD participants and their families as well as all the PREVENT-AD team members for their time and dedication. The authors would like to acknowledge Alfonso Fajardo, Ting Qiu, Mohammadali Javanray, Jonathan Gallego Rudolf, Bery Mohammediyan, Jordana Remz for providing advice on the study analyses and Jennifer Tremblay-Mercier, Louise Hudon, Christine Dery, Elisabeth Sylvian, Gabriel Jean, Nolan-Patrick Cunningham for their contribution to the data collection. Lobna Almasalmeh and the Neurokemi lab at Gothenburg university for their assistance in plasma and CSF sample processing. The project was funded by the Canadian Institute of Health Research (CIHR) (#438655) and Brain Canada grants. Dr. Zetterberg is a Wallenberg Scholar and a Distinguished Professor at the Swedish Research Council supported by grants from the Swedish Research Council (#2023-00356; #2022-01018 and #2019-02397), the European Union's Horizon Europe research and innovation programme under grant agreement No 101053962, Swedish State Support for Clinical Research (#ALFGBG-71320), the Alzheimer Drug Discovery Foundation (ADDF), USA (#201809-2016862), the AD Strategic Fund and the Alzheimer's Association (#ADSF-21-831376-C, #ADSF-21-831381-C, #ADSF-21-831377-C, and #ADSF-24-1284328-C), the Bluefield Project, Cure Alzheimer's Fund, the Olav Thon Foundation, the Erling-Persson Family Foundation, Familjen Rönströms Stiftelse, Stiftelsen för Gamla Tjänarinnor, Hjärnfonden, Sweden (#FO2022-0270), the European Union's Horizon 2020 research and innovation programme under the Marie Skłodowska-Curie grant agreement No 860197 (MIRIADE), the European Union Joint Programme – Neurodegenerative Disease Research (JPND2021-00694), the National Institute for

Health and Care Research University College London Hospitals Biomedical Research Centre, and the UK Dementia Research Institute at UCL (UKDRI-1003).

Frédéric St-Onge was funded by a scholarship from the Fonds de Recherche du Quebec – Santé (FRQS). Dr. Soucy is funded by the CIHR, Brain Canada, and Biogen Canada. Dr. Poirier is funded by CIHR, the J.L. Levesque Foundation, FRQS, and Natural Sciences and Engineering Research Council of Canada (NSERC) grants. MS receives funding from the Knut and Alice Wallenberg Foundation (Wallenberg Centre for Molecular and Translational Medicine; KAW2014.0363 and KAW 2023.0371), the Swedish Research Council (2017-02869, 2021-02678, 2021-06545 and 2023-06188), the European Union’s Horizon Europe research and innovation program under grant agreement no 101132933 (AD-RIDDLE) and 101112145 (PROMINENT), the National Institute of Health (R01 AG081394-01), the Swedish state under the agreement between the Swedish government and the County Councils, the ALF-agreement (ALFGBG-813971 and ALFGBG-965326), the Swedish Brain Foundation (FO2021-0311), the Swedish Alzheimer Foundation (AF-994900), the Sahlgrenska Academy at the University of Gothenburg, the Västra Götaland Region R&D (VGFOUREG-995510) and Innovation platforms, Sahlgrenska Science Park and the National Institute for Health and Care Research University College London Hospitals Biomedical Research Centre.

Conflict of Interest Disclosures

HZ has served at scientific advisory boards and/or as a consultant for Abbvie, Acumen, Alector, Alzinova, ALZPath, Amylyx, Annexon, Apellis, Artery Therapeutics, AZTherapies, Cognito Therapeutics, CogRx, Denali, Eisai, Merry Life, Nervgen, Novo Nordisk, Optoceutics, Passage Bio, Pinteon Therapeutics, Prothena, Red Abbey Labs, reMYND, Roche, Samumed,

Siemens Healthineers, Triplet Therapeutics, and Wave, has given lectures in symposia sponsored by Alzecure, Biogen, Cellectricon, Fujirebio, Lilly, Novo Nordisk, and Roche, and is a co-founder of Brain Biomarker Solutions in Gothenburg AB (BBS), which is a part of the GU Ventures Incubator Program (outside submitted work). MS has served on advisory boards for Roche, Novo Nordisk and Servier, received speaker honoraria from Bioarctic, Eisai, Genentech, Novo Nordisk and Roche and receives research support (to the institution) from Alzpath, Bioarctic, Novo Nordisk and Roche (outside scope of submitted work). He is a co-founder of Centile Bioscience Ltd. No other disclosures were reported.

Data availability

Data used in the preparation of this manuscript were obtained from the Pre-symptomatic Evaluation of Experimental or Novel Treatments for Alzheimer's Disease (PREVENT-AD). Some of the data are publicly available (<https://openpreventad.loris.ca> and <https://registeredpreventad.loris.ca>), and the remaining data can be shared upon approval by the scientific committee at the Centre for Studies on Prevention of Alzheimer's Disease (StoP-AD) at the Douglas Mental Health University Institute. A complete listing of PREVENT-AD investigators can be found at <https://preventad.loris.ca/acknowledgements/acknowledgements.php?date=2023-03-23>.

Code availability

The code used for the statistical analyses is available from the first author upon request. The analyses and figures were built using R programming language (v.4.2.2) and R studio "Elsbeth Geranium" Release (7d165dcfc1b6d300eb247738db2c7076234f6ef0, 2022-12-03) for

macOS (Packages: survival v3.4-0; survminer v0.4.9; lme4 v1.1-31; lmerTest v3.1-3; ggplot2 v2.3.5.0; tidyverse v1.3.2; dplyr v1.1.2; stats v4.2.1; sjPlot v2.8.12; zoo v1.8-12; tibble v3.2.1; rstatix v0.7.2; pROC v1.18.4).

Contributions

Yara Yakoub, Nicholas J. Ashton, Michael Schöll, Pedro Rosa-Neto, Judes Poirier, John C. S. Breitner, Henrik Zetterberg, Kaj Blennow, and Sylvia Villeneuve contributed to the study concept and design. Yara Yakoub, Nicholas J. Ashton, Thomas K. Karikari, Christine Dery, Frédéric St-Onge, Maiya Geddes, Simon Ducharme, Maxime Montembeault, and Jean-Paul Soucy contributed to data acquisition and analysis. Yara Yakoub and Sylvia Villeneuve drafted the manuscript and figures.

References

1. Jack CR, Jr., Holtzman DM. Biomarker modeling of Alzheimer's disease. *Neuron*. Dec 18 2013;80(6):1347-58. doi:10.1016/j.neuron.2013.12.003
2. Association As. NIA-AA Revised Clinical Criteria for Alzheimer's Disease. *Alzheimer Dis Assoc Disord*. 2023;
3. Jack CR, Bennett DA, Blennow K, et al. NIA-AA Research Framework: Toward a biological definition of Alzheimer's disease. *Alzheimer's & Dementia: The Journal of the Alzheimer's Association*. 2018;14(4):535-562. doi:10.1016/j.jalz.2018.02.018
4. Strikwerda-Brown C, Hobbs DA, Gonneaud J, et al. Association of Elevated Amyloid and Tau Positron Emission Tomography Signal With Near-Term Development of Alzheimer Disease Symptoms in Older Adults Without Cognitive Impairment. *JAMA Neurology*. 2022;doi:10.1001/jamaneurol.2022.2379
5. Ossenkoppele R, Pichet Binette A, Groot C, et al. Amyloid and tau PET-positive cognitively unimpaired individuals are at high risk for future cognitive decline. *Nature Medicine*. 2022;28(11):2381-2387. doi:10.1038/s41591-022-02049-x
6. Villemagne VL, Lopresti BJ, Doré V, et al. What Is T+? A Gordian Knot of Tracers, Thresholds, and Topographies. *Journal of Nuclear Medicine*. 2021;62(5):614-619. doi:10.2967/jnumed.120.245423
7. Barthélemy NR, Li Y, Joseph-Mathurin N, et al. A soluble phosphorylated tau signature links tau, amyloid and the evolution of stages of dominantly inherited Alzheimer's disease. *Nat Med*. Mar 2020;26(3):398-407. doi:10.1038/s41591-020-0781-z
8. Montoliu-Gaya L, Benedet AL, Tissot C, et al. Mass spectrometric simultaneous quantification of tau species in plasma shows differential associations with amyloid and tau pathologies. *Nat Aging*. Jun 2023;3(6):661-669. doi:10.1038/s43587-023-00405-1
9. Verberk IMW, Slot RE, Verfaillie SCJ, et al. Plasma Amyloid as Prescreener for the Earliest Alzheimer Pathological Changes. *Ann Neurol*. Nov 2018;84(5):648-658. doi:10.1002/ana.25334
10. Sperling RA, Sperling R, Donohue MC, et al. Trial of Solanezumab in Preclinical Alzheimer's Disease. *The New England journal of medicine*. 2023;389(12):1096-1107. doi:10.1056/NEJMoa2305032
11. van Dyck CH, Swanson CJ, Aisen P, et al. Lecanemab in Early Alzheimer's Disease. *The New England journal of medicine*. 2023;388(1):9-21. doi:10.1056/NEJMoa2212948
12. Tremblay-Mercier J, Madjar C, Das S, et al. Open science datasets from PREVENT-AD, a longitudinal cohort of pre-symptomatic Alzheimer's disease. *NeuroImage Clinical*. 2021;31:102733. doi:10.1016/j.nicl.2021.102733
13. Meyer P-F, Ashton NJ, Karikari TK, et al. Plasma p-tau231, p-tau181, PET Biomarkers, and Cognitive Change in Older Adults. *Annals of neurology*. 2022;91(4):548-560. doi:10.1002/ana.26308
14. Gobom J, Parnetti L, Rosa-Neto P, et al. Validation of the LUMIPULSE automated immunoassay for the measurement of core AD biomarkers in cerebrospinal fluid. *Clin Chem Lab Med*. Jan 27 2022;60(2):207-219. doi:10.1515/cclm-2021-0651
15. Gonzalez-Ortiz F, Ferreira PCL, González-Escalante A, et al. A novel ultrasensitive assay for plasma p-tau217: Performance in individuals with subjective cognitive decline and early Alzheimer's disease. *Alzheimers Dement*. Feb 2024;20(2):1239-1249. doi:10.1002/alz.13525

16. Jack CR, Jr., Wiste HJ, Weigand SD, et al. Defining imaging biomarker cut points for brain aging and Alzheimer's disease. *Alzheimers Dement*. Mar 2017;13(3):205-216. doi:10.1016/j.jalz.2016.08.005
17. Therriault J, Servaes S, Tissot C, et al. Equivalence of plasma p-tau217 with cerebrospinal fluid in the diagnosis of Alzheimer's disease. *Alzheimer's & Dementia*. 2023/11/01 2023;19(11):4967-4977. doi:<https://doi.org/10.1002/alz.13026>
18. Mattsson-Carlgrén N, Palmqvist S, Blennow K, Hansson O. Increasing the reproducibility of fluid biomarker studies in neurodegenerative studies. *Nat Commun*. Dec 7 2020;11(1):6252. doi:10.1038/s41467-020-19957-6
19. Hansson O, Mikulskis A, Fagan AM, et al. The impact of preanalytical variables on measuring cerebrospinal fluid biomarkers for Alzheimer's disease diagnosis: A review. *Alzheimer's & Dementia*. 2018/10/01/ 2018;14(10):1313-1333. doi:<https://doi.org/10.1016/j.jalz.2018.05.008>
20. Hansson O, Blennow K, Zetterberg H, Dage J. Blood biomarkers for Alzheimer's disease in clinical practice and trials. *Nat Aging*. May 2023;3(5):506-519. doi:10.1038/s43587-023-00403-3
21. Hampel H, Hu Y, Cummings J, et al. Blood-based biomarkers for Alzheimer's disease: Current state and future use in a transformed global healthcare landscape. *Neuron*. 2023;111(18):2781-2799. doi:10.1016/j.neuron.2023.05.017
22. Mattsson-Carlgrén N, Collij LE, Stomrud E, et al. Plasma Biomarker Strategy for Selecting Patients With Alzheimer Disease for Anti-amyloid Immunotherapies. *JAMA Neurol*. Jan 1 2024;81(1):69-78. doi:10.1001/jamaneurol.2023.4596
23. Mattsson-Carlgrén N, Salvadó G, Ashton NJ, et al. Prediction of Longitudinal Cognitive Decline in Preclinical Alzheimer Disease Using Plasma Biomarkers. *JAMA Neurology*. 2023;doi:10.1001/jamaneurol.2022.5272
24. Palmqvist S, Tideman P, Cullen N, et al. Prediction of future Alzheimer's disease dementia using plasma phospho-tau combined with other accessible measures. *Nature Medicine*. 2021/06/01 2021;27(6):1034-1042. doi:10.1038/s41591-021-01348-z
25. Mattsson-Carlgrén N, Janelidze S, Palmqvist S, et al. Longitudinal plasma p-tau217 is increased in early stages of Alzheimer's disease. *Brain*. 2021;143(11):3234-3241. doi:10.1093/BRAIN/AWAA286
26. Jonaitis EM, Janelidze S, Cody KA, et al. Plasma phosphorylated tau 217 in preclinical Alzheimer's disease. *Brain Communications*. 2023;5(2):fcad057. doi:10.1093/braincomms/fcad057
27. Doré V, Doecke JD, Saad ZS, et al. Plasma p217+tau versus NAV4694 amyloid and MK6240 tau PET across the Alzheimer's continuum. *Alzheimers Dement (Amst)*. 2022;14(1):e12307. doi:10.1002/dad2.12307
28. Rissman RA, Langford O, Raman R, et al. Plasma A β 42/A β 40 and phospho-tau217 concentration ratios increase the accuracy of amyloid PET classification in preclinical Alzheimer's disease. *Alzheimer's & Dementia*. 2024;20(2):1214-1224. doi:<https://doi.org/10.1002/alz.13542>
29. Barthélemy NR, Salvadó G, Schindler SE, et al. Highly accurate blood test for Alzheimer's disease is similar or superior to clinical cerebrospinal fluid tests. *Nature Medicine*. 2024/02/21 2024;doi:10.1038/s41591-024-02869-z

30. Janelidze S, Berron D, Smith R, et al. Associations of Plasma Phospho-Tau217 Levels With Tau Positron Emission Tomography in Early Alzheimer Disease. *JAMA Neurology*. 2021;78(2):149-156. doi:10.1001/jamaneurol.2020.4201
31. Gauthier S, Reisberg B, Zaudig M, et al. Mild cognitive impairment. *Lancet*. Apr 15 2006;367(9518):1262-70. doi:10.1016/s0140-6736(06)68542-5

