

Supplementary Table 1. Demographics and characteristics of the study cohort.

	Nasal brushings	Bronchial brushings	BAL	Adenoids	Tonsils	Whole blood
Total number	37	17	8	36	31	49
Age: years, median (range)	4.69 (1.1-13.2)	6.18 (2.3-12.1)	3.03 (0.5-10.3)	5.5 (1.6-15.2)	4.7 (1.1-13.2)	6.65 (1.1-15.2)
Sex: male, n (%)	21 (56.7)	11(64.7)	5 (62.5)	21 (58.3)	18 (58.1)	29 (59)
Reason for procedure [n, (%)]						
- OSA	32 (86.5)	16 (94.1)	-	33 (91.7)	30 (96.8)	40 (81.6)
-hearing concerns	1 (2.7)	-	-	-	-	3 (6.1)
-history of tonsillitis	1 (2.7)	-	-	1 (2.8)	1 (3.2)	1 (2.0)
-investigation of stridor	3 (8.1)	-	8 (100)	-	-	3 (6.1)
-nasal obstruction	-	1 (5.9)	-	2 (5.5)	-	1 (2.0)
-vocal cord polyp	-	-	-	-	-	1 (2.0)

OSA – obstructive sleep apnoea, BAL – bronchoalveolar lavage.

Supplementary Table 2. Summary data from parent questionnaires for medical history, respiratory status and respiratory medications for the whole cohort (n=66 children).

Cohort summary statistics	No (%)	Yes (%)	parent unsure or data missing (%)	Other information
Medical history				
Bronchiolitis_hospital_ever	75.8	13.6	10.6	78% of "yes" was >1 year ago
Asthma_hospital_ever	78.8	9.1	12.1	50% of "yes" was >1 year ago
Croup_hospital_ever	83.3	7.6	9.1	80% of "yes" was >1 year ago
Lower respiratory tract infection_hospital_ever	83.3	7.6	9.1	80% of "yes" was >1 year ago
Upper respiratory tract infection_hospital_ever	83.3	6.1	10.6	50% of "yes" was >1 year ago
Pneumonia_hospital_ever	86.4	3	10.6	50% of "yes" was >1 year ago
Rhinovirus_hospital_ever	86.4	1.5	12.1	100% of "yes" was >1 year ago
Influenza_hospital_ever	89.4	0	10.6	NA
Doctor_diagnosed_asthma_ever	65.1	25.8	9.1	NA
Doctor_diagnosed_allergic_rhinitis	54.5	36.4	9.1	NA
Doctor_diagnosed_protracted_bacterial_bronchitis_ever	84.8	6.1	9.1	NA
Doctor_confirmed_eczema_ever	62.1	27.3	10.6	NA
Doctor_confirmed_allergies (food, dust, plant, animal)	66.7	21.2	12.1	NA
Current respiratory status				
Cough_last_7days	77.3	13.6	9.1	NA
Cough_last_month	57.6	33.3	9.1	NA
Wheeze_last_7days	83.3	7.6	9.1	NA
Wheeze_lastmonth	74.2	16.7	9.1	NA
Respiratory_tract_infection_last_7days	89.4	1.5	9.1	NA
Respiratory_tract_infection_past_month	71.2	19.7	9.1	NA
Respiratory medications				
Bronchodilator_use_ever	63.6	27.3	9.1	16.6% of "yes" was >1 year ago
Inhaled_steroid_use_ever	84.8	6.1	9.1	25% of "yes" was >1 year ago
Oral_steroid_use_ever	74.2	16.7	9.1	100% of "yes" was >1 year ago
Nasal_steroid_use_ever	60.9	30	9.1	60% of "yes" was >1 year ago
Combination_treatment_use_ever	86.4	4.5	9.1	100% of "yes" was "as needed"
Leukotriene_antagonist_use_ever	86.4	4.5	9.1	100% of "yes" was "daily"

Supplementary Table 3. Flow cytometry panel for assessment of immune cell populations in nasal brushings, bronchial brushings, and bronchoalveolar lavage (BAL).

Antibody	Fluorophore	Volume in μL (2X in 100μL)	Supplier	Clone
CD16	BUV395	0.5	Becton Dickinson	3G8
SIGLEC8	BUV661	1	Becton Dickinson	837535
CD56	BUV737	2	Becton Dickinson	NCAM16.2
CD11b	BUV805	2	Becton Dickinson	D12
CD206	BV421	1	Becton Dickinson	19.2
HLADR	V500	1	Becton Dickinson	G46-6
CD19	BV605	2	Becton Dickinson	SJ25C1
CD8	BV650	1	Becton Dickinson	RPA-T8
CD45	BV711	2	Becton Dickinson	HI30
CD14	BV786	4	Becton Dickinson	M5E2
EPCAM	BB515	1	Becton Dickinson	EBA-1
CD3	FITC	2	Becton Dickinson	SK7
CD66b	PE	0.5	Becton Dickinson	G10F5
CD15	PE-CF594	1	Becton Dickinson	W6D3
CD11c	PE-Cy7	2	Becton Dickinson	B-ly6
CD4	A700	2	Becton Dickinson	RPA-T4
Live/Dead	NIR	N/A	Invitrogen (Thermo Fisher Scientific)	N/A

Supplementary Table 4A. Flow cytometry panel for assessment of immune cell populations in tonsils, adenoids, and whole blood – chemokines and receptors.

Antibody	Fluorophore	Volume in μL (3X in 100 μL)	Supplier	Clone
CCR4	BUV661	3	Becton Dickinson	1G1
CCR7	BV421	6	BioLegend	G043H7
CXCR5	BV750	6	Becton Dickinson	RF8B2
CXCR3	PE-Cy7	0.75	BioLegend	G025H7

Supplementary Table 4B. Flow cytometry panel for assessment of immune cell populations in tonsils, adenoids, and whole blood – all other antibodies.

Antibody	Fluorophore	Volume in μL (3X in 100 μL)	Supplier	Clone
CD45RA	BUV395	1.5	Becton Dickinson	5H9
CD16	BUV496	0.75	Becton Dickinson	3G8
CD206	BUV563	1.5	Becton Dickinson	19.2
CD56	BUV737	1.5	Becton Dickinson	NCAM16.2
CD8	BUV805	0.75	Becton Dickinson	SK1
CD123	superbright 436	3	Invitrogen (Thermo Fisher Scientific)	6H6
CD11c	eFluor 450	1.5	Invitrogen (Thermo Fisher Scientific)	3.9
IgD	BV480	0.75	Becton Dickinson	IA6-2
CD3	BV510	1.5	BioLegend	SK7
CD20	Pacific orange	1.5	Invitrogen (Thermo Fisher Scientific)	HI47
IgG	BV605	6	Becton Dickinson	G18-145
HLADR	BV650	0.75	Becton Dickinson	G46-6
PD-1	BV785	1.5	BioLegend	EH12.2H7
CD141	BB515	1.5	Becton Dickinson	1A4
CD69	FITC	3	BioLegend	FN50
CD14	Spark Blue 550	1.5	BioLegend	63D3
CD45	PerCP	3	BioLegend	14C2A07
CD4	cFluor YG584	1.5	Cytek Biosciences	SK3
CD15	PE-CF594	1.5	Becton Dickinson	W6D3
CD24	PE-Alexa Fluor 610	3	Invitrogen (Thermo Fisher Scientific)	SN3
CD25	PE-Alexa Fluor 700	3	Invitrogen (Thermo Fisher Scientific)	CD25-3G10
CD1c	AF647	12	BioLegend	L161
CD19	Spark NIR 685	3	BioLegend	HIB19
CD127	APC-R700	3	Becton Dickinson	HIL-7R-M21
CD27	APC-H7	6	Becton Dickinson	M-T271
CD38	APC-Fire 810	0.75	BioLegend	HB-7
Live/dead	UV Blue	N/A	Invitrogen (Thermo Fisher Scientific)	N/A

Supplementary Table 5. Median proportions (%CD45+ cells) and P-values for significant cell types in nasal-bronchial, nasal-alveolar, bronchial-alveolar comparisons in Figure 5B.

Nasal-vs- bronchial			
	Median nasal	Median bronchial	FDR-P
CD66blow CD16+ neutrophils	12.56	3.60	0.02
Macrophages	0.99	3.46	0.01
NK-T cells	0.16	0.98	0.002
Nasal-vs-alveolar			
	Median nasal	Median alveolar	FDR-P
B cells	3.92	0.97	0.01
Eosinophils	0.22	0.07	0.01
CD8 T cells	20.71	3.87	0.0003
Neutrophils	28.17	1.82	<0.000001
CD66blowCD16+ neutrophils	12.56	0.06	<0.000001
CD66bhighCD16+neutrophils	4.49	0.85	0.007
CD66bhighCD16- neutrophils	1.77	0.11	0.00007
CD66blowCD16- neutrophils	2.17	0.06	<0.000001
Macrophages	0.99	80.06	<0.000001
Bronchial-vs-alveolar			
	Median bronchial	Median alveolar	FDR-P
Neutrophils	30.75	1.82	0.0002
Eosinophils	0.41	0.07	0.03
CD66blowCD16+ neutrophils	3.60	0.06	0.0005
CD66bhighCD16+neutrophils	6.86	0.85	0.04
CD66bhighCD16- neutrophils	8.00	0.11	0.002
CD66blowCD16- neutrophils	2.85	0.06	0.0002
Macrophages	3.46	80.06	0.00002
NK cells	1.46	0.39	0.01
NK-T cells	0.98	0.19	0.03
CD8 T cells	13.78	3.87	0.04

Supplementary Table 6 Spearman coefficients and FDR-P values for the nasal-bronchial-blood immune cell axis in Figure 5C.

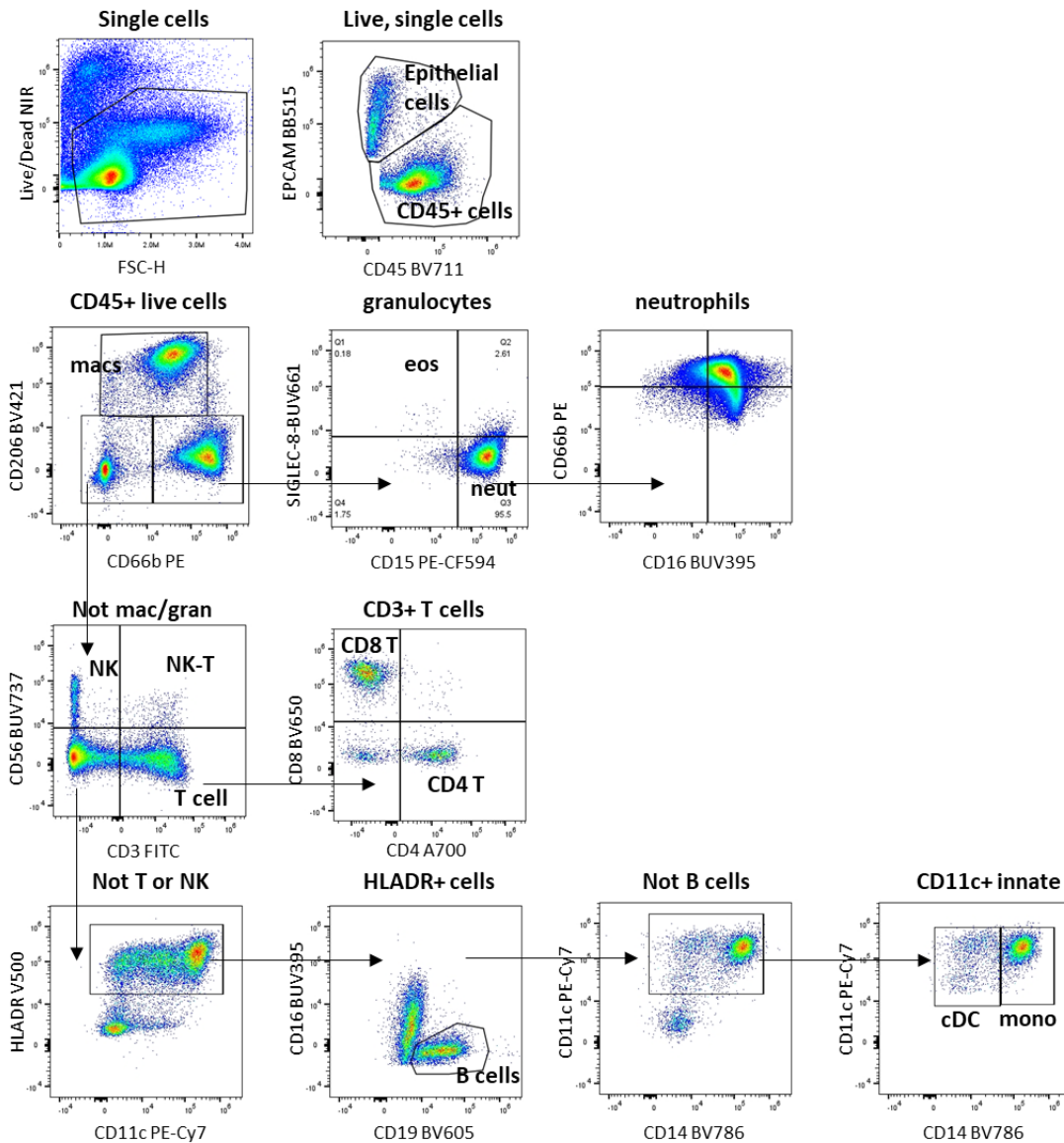
Cell type	Spearman-ρ	FDR-P
Nasal-bronchial		
Eosinophils	0.85	0.002*
Neutrophils	0.64	0.030*
Macrophages	0.42	0.220
NK cells	-0.18	0.610
NK-T cells	0.19	0.610
CD8 T cells	0.69	0.020*
CD4 T cells	0.70	0.020*
Monocytes	0.72	0.020*
B cells	0.12	0.690
cDCs	0.92	0.0002*
Nasal-blood		
Eosinophils	0.44	0.16
Neutrophils	-0.15	0.66
Macrophages	NA	NA
NK cells	-0.20	0.65
NK-T cells	-0.02	0.92
CD8 T cells	-0.13	0.66
CD4 T cells	-0.22	0.65
Monocytes	0.24	0.65
B cells	-0.03	0.92
cDCs	0.13	0.66
Bronchial-blood		
Eosinophils	0.35	0.59
Neutrophils	0.08	0.98
Macrophages	NA	NA
NK cells	-0.20	0.85
NK-T cells	0.72	0.03*
CD8 T cells	-0.36	0.59
CD4 T cells	-0.01	0.98
Monocytes	-0.25	0.81
B cells	0.05	0.98
cDCs	-0.07	0.98

Supplementary Table 7. Median proportions (%CD45+ cells) and P-values for significant cell types in tonsil-adenoid comparison in Figure 6B.

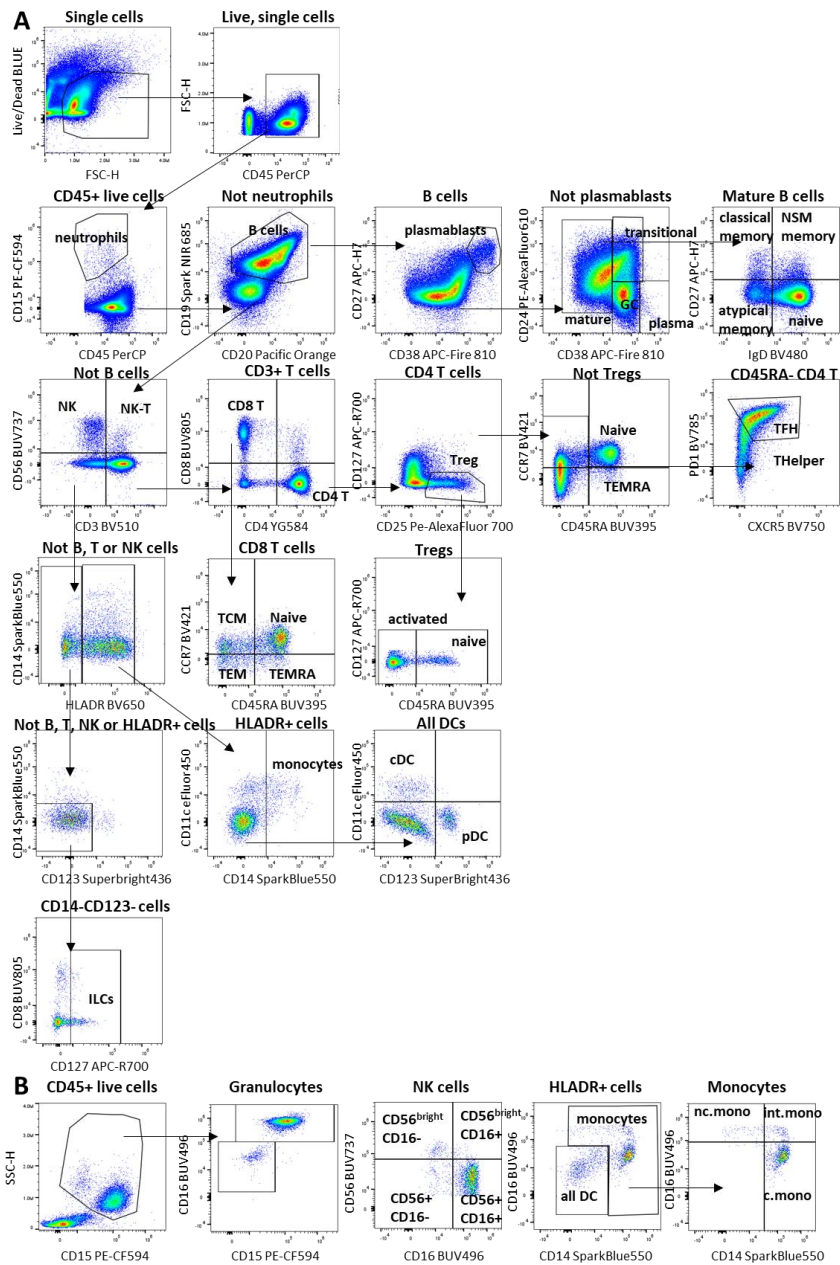
	Median tonsils	Median adenoids	FDR-P
Neutrophils	0.59	0.26	0.009
Plasmablasts	1.38	0.88	0.0008
GC B cells	18.84	10.38	0.002
Classical memory B cells	1.63	2.79	0.002
Non-switched memory B cells	1.69	2.72	0.002
NK cells	0.36	0.63	0.00005
pDCs	0.32	0.82	0.000001

Supplementary Table 8. Spearman coefficients and FDR-P values for tonsil-adenoid-blood immune cell axis in Figure 6C.

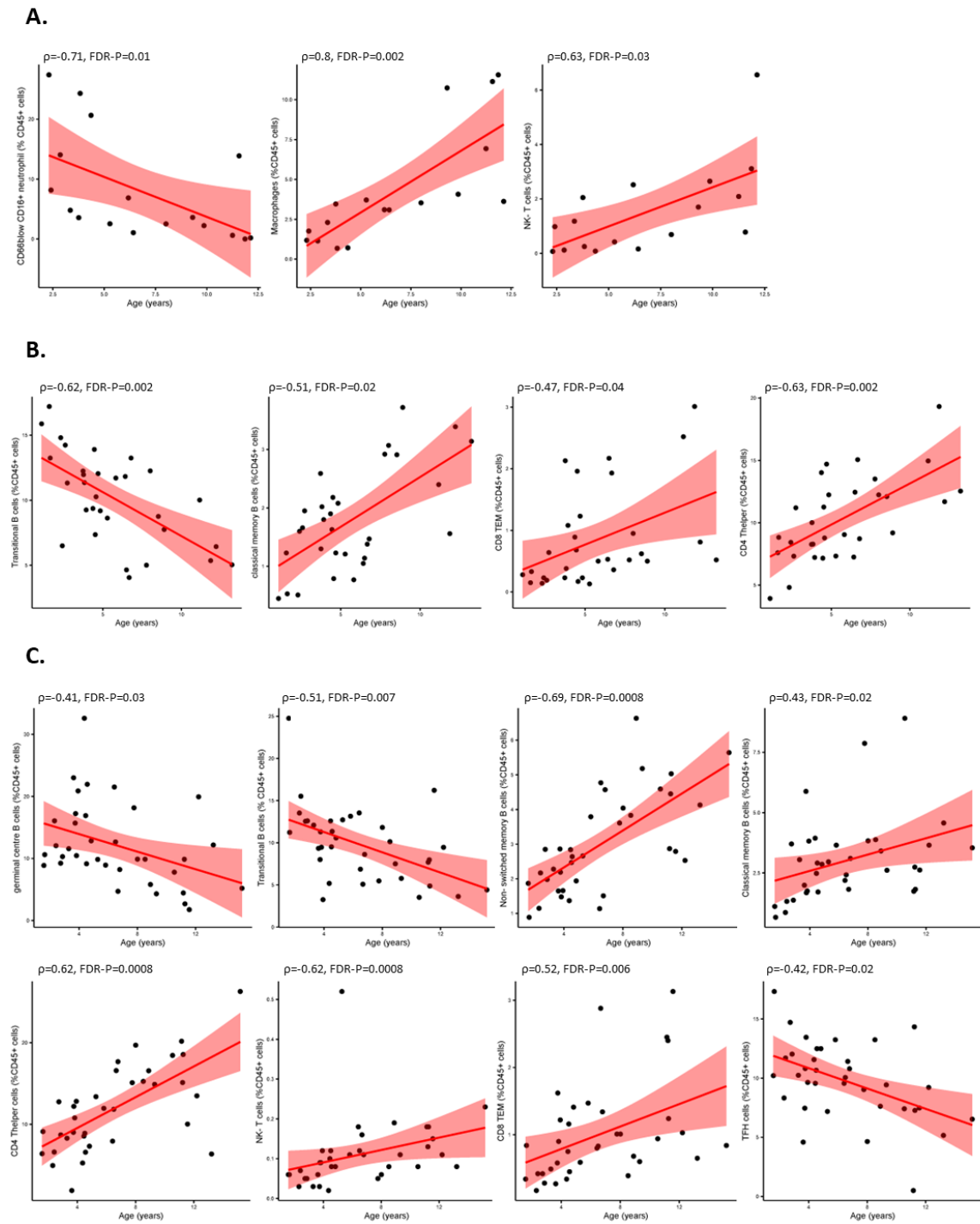
	Tonsil-adenoid		Tonsil-blood		Adenoid-blood	
	Spearman- ρ	FDR-P	Spearman- ρ	FDR-P	Spearman- ρ	FDR-P
GC B cells	0.28	0.166	NA	NA	NA	NA
Plasma blasts	0.60	0.002*	-0.26	0.288	-0.03	0.892
Atypical memory B cells	0.80	0.000*	0.54	0.046*	0.55	0.013*
Classical memory B cells	0.65	0.001*	0.27	0.288	0.53	0.017*
Naive B cells	0.59	0.002*	0.37	0.185	0.31	0.201
Non-switched memory B cells	0.45	0.024*	0.15	0.563	0.16	0.480
Plasma cells	0.51	0.010*	0.28	0.288	0.46	0.040*
Transitional B cells	0.55	0.005*	0.61	0.016*	0.37	0.109
NK cells	0.17	0.398	0.27	0.288	0.38	0.109
NK-T cells	0.64	0.002*	-0.05	0.830	0.30	0.201
CD8 T _{CM}	0.62	0.002*	0.44	0.089	0.48	0.038*
CD8 T _N	0.53	0.007*	0.61	0.016*	0.37	0.109
CD8 T _{EMRA}	0.50	0.012*	0.06	0.797	0.17	0.480
CD8 T _{EM}	0.51	0.011*	0.35	0.200	0.56	0.013*
Activated Treg	0.55	0.005*	0.44	0.089	0.30	0.201
Naïve Treg	0.68	0.001*	0.50	0.070	0.72	0.000*
T _{FH}	0.61	0.002*	0.48	0.071	0.27	0.245
CD4 T _{helper}	0.34	0.098	0.26	0.288	0.16	0.480
CD4 T _N	0.42	0.038*	0.44	0.089	0.09	0.644
CD4 T _{EMRA}	0.65	0.001*	0.34	0.203	0.12	0.611
Monocytes	0.34	0.098	-0.07	0.797	0.17	0.480
cDCs	0.21	0.313	0.27	0.288	0.10	0.640
pDCs	0.63	0.002*	0.24	0.301	0.44	0.048*
ILCs	0.60	0.002*	0.08	0.797	0.20	0.444
Neutrophils	0.38	0.066	0.27	0.288	-0.22	0.379



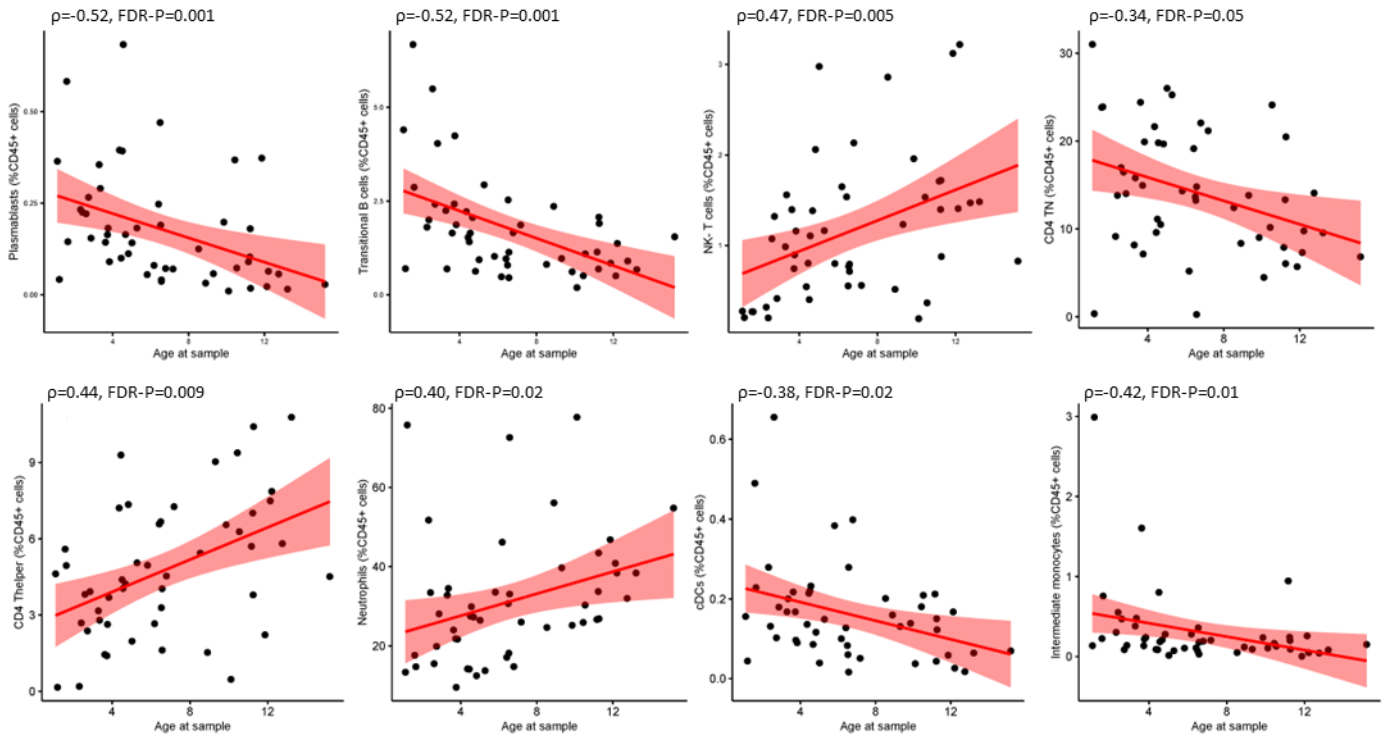
Supplementary Figure 1. Representative flow cytometry gating strategy for nasal, bronchial, and alveolar samples. Live cells were selected based on viability dye, following which expression of lineage markers CD45 and EPCAM were used to distinguish all immune cells (CD45+ cells) and all epithelial cells (EPCAM+ cells). Within CD45+ live cells, macrophages were selected based on CD206 expression, and total granulocytes were selected based on CD66b expression. Within the granulocyte population, eosinophils were selected based on SIGLEC-8 expression and neutrophils were selected based on CD15 expression. Neutrophil subsets were identified using CD66b and CD16. CD206- CD66b- cells were subtyped into CD56+ NK cells, CD56+CD3+ NK-T cells, and CD3+ T cells. Within the CD3+ T cell fraction, CD4 and CD8 T cells were identified. HLADR+CD19+ cells were identified as B cells. Monocytes were identified based on D14 expression from within the CD11c+ HLADR+ population. Finally, classical DCs (cDCs) were selected based on HLADR+CD14-CD11c+ expression pattern.



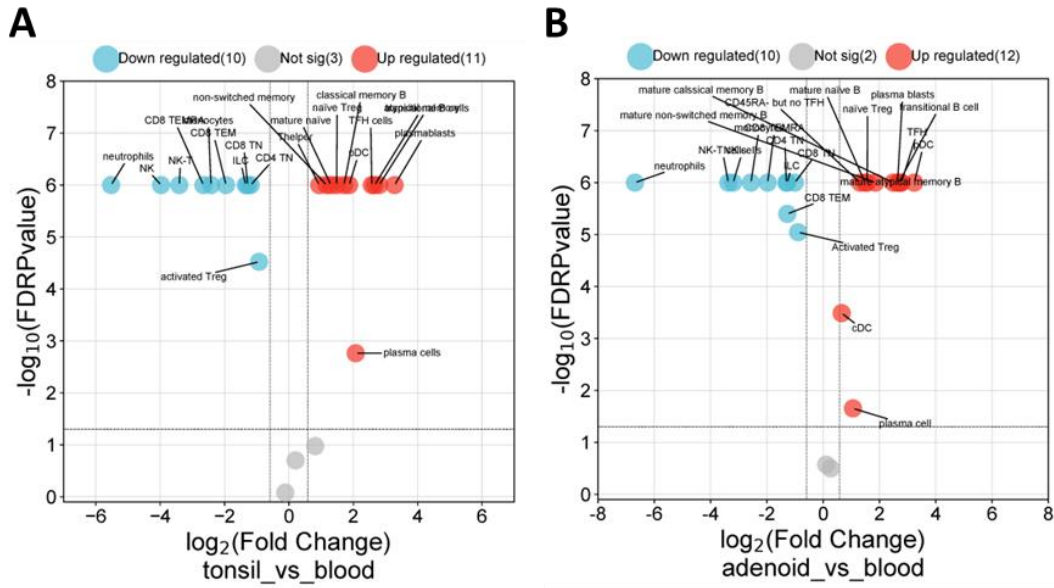
Supplementary Figure 2. Representative flow cytometry gating strategy for adenoid, tonsil, and whole blood samples. **(A)** Gating strategies in common for all sample types: Live cells were selected based on viability dye, following which the lineage marker CD45 was used to distinguish all immune cells (CD45+ cells). Within the CD45+ immune population, neutrophils were identified based on CD15 expression. B cells were identified from the non-neutrophil population as CD19+ cells. Within the B cell population, plasmablasts (CD38^{high}CD27^{high}), mature (CD38-), germinal centre (CD38+CD24-), transitional (CD38+CD24+) and plasma cells (CD38^{high}, CD24^{low}) were identified. Within the mature B cell population, expression of IgD and CD27 was used to distinguish naïve, classical memory, non-switched memory and atypical memory B cells. Next, NK cells were identified from within the non-B cell fraction based on CD56 expression. NK-T cells expressed both CD3 and CD56. CD3-expressing T cells were identified as CD4 T cells or CD8 T cells. Within the CD4 T cell population, Tregs were identified based on a CD25+CD127- profile, and CD45RA was used to distinguish activated (CD45RA-) from naïve (CD45RA+) Tregs. Naïve and TEMRA CD4 T cells were identified from within the non-Treg CD4 fraction. CD45RA- CD4 T cells were classified as T-follicular helper (TFH) or T-helper based on expression of CXCR5 and PD1. CD8 T cells were classified as Naïve, TEMRA, TCM or TEM based on CCR7 and CD45RA expression. Next, CD19-CD20-CD3-CD56- HLADR+ cells were classified as monocytes (CD11c+CD14+), cDCs (CD11c+CD14-CD123-) or pDC (CD11c-CD14-CD123+). Finally, ILCs were distinguished as CD127+ cells that did not express any of the other lineage markers. **(B)** Gating strategies unique to whole blood samples: Both eosinophils (CD15^{low}CD16-) and neutrophils (CD15+CD16+) were identified from within a total granulocyte population. NK cells were separated into subsets based on expression of CD56 and CD16. These populations of NK cells were not evident in the tonsil or adenoid samples. Finally, three subsets of monocytes were identified based on CD14 and CD16 expression: classical monocytes, intermediate monocytes, non-classical monocytes. These populations of monocytes were not evident in the tonsil or adenoid samples.



Supplementary Figure 3. Spearman correlation plots for each significant cell type in each tissue: **(A)** Bronchial brushings, **(B)** tonsils and **(C)** adenoids. The plots depict age in years on the x-axis, and the proportion of significant cell type on the y-axis. Spearman coefficient (ρ) and FDR-corrected p-values are shown.



Supplementary Figure 4. Spearman correlation plots for each significant cell type in each whole blood. The plots depict age in years on the x-axis, and the proportion of significant cell type on the y-axis. Spearman coefficient (ρ) and FDR-corrected p-values are shown.



Supplementary Figure 5. Statistical comparison in immune cell proportions between **(A)** tonsils and blood, and **(B)** adenoids and blood. Cross-sectional p-values (part B) were determined by Mann-Whitney U-test and corrected for false discovery rate using the Benjamini Hochberg approach. FDR $p < 0.05$ and fold change > 1.5 was considered significant.