

Supporting Data

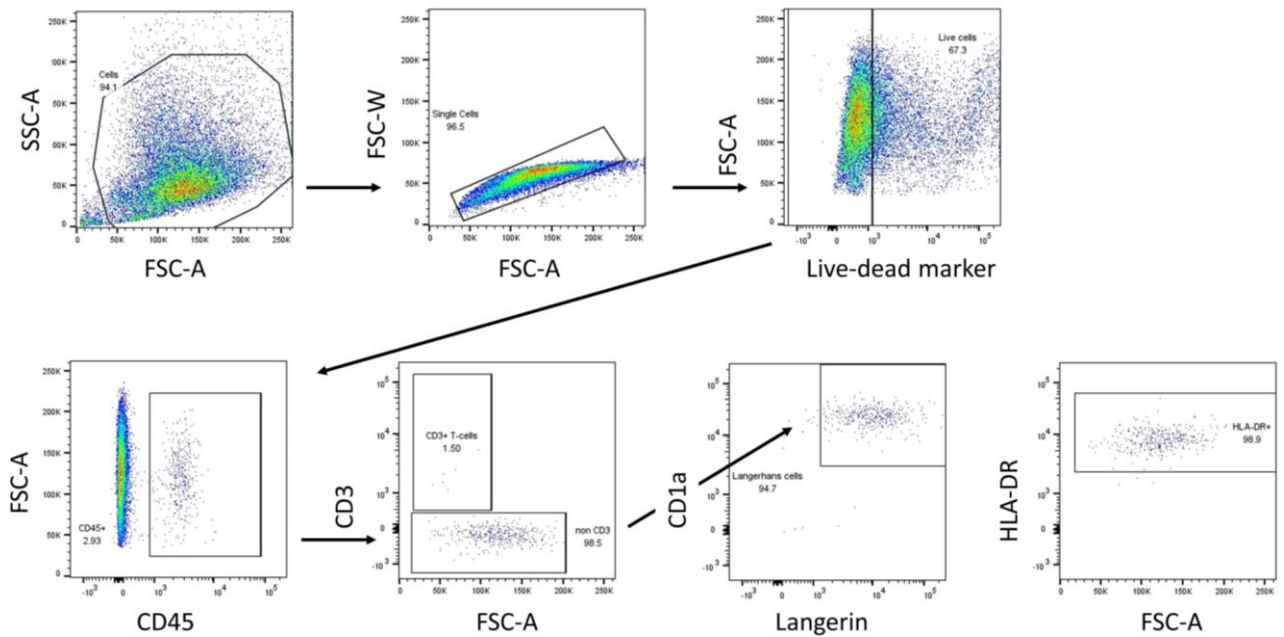


Figure S1 Gating strategy for sorting LCs from skin epidermis

Scatter plots showing the gating strategy used for fluorescence-activated cell sorting (FACS), for single Langerhans cells from human epidermis as live, CD45⁺CD207⁺CD1a⁺ cells. Plots were extracted from Flow Jo (version 10.9.0).

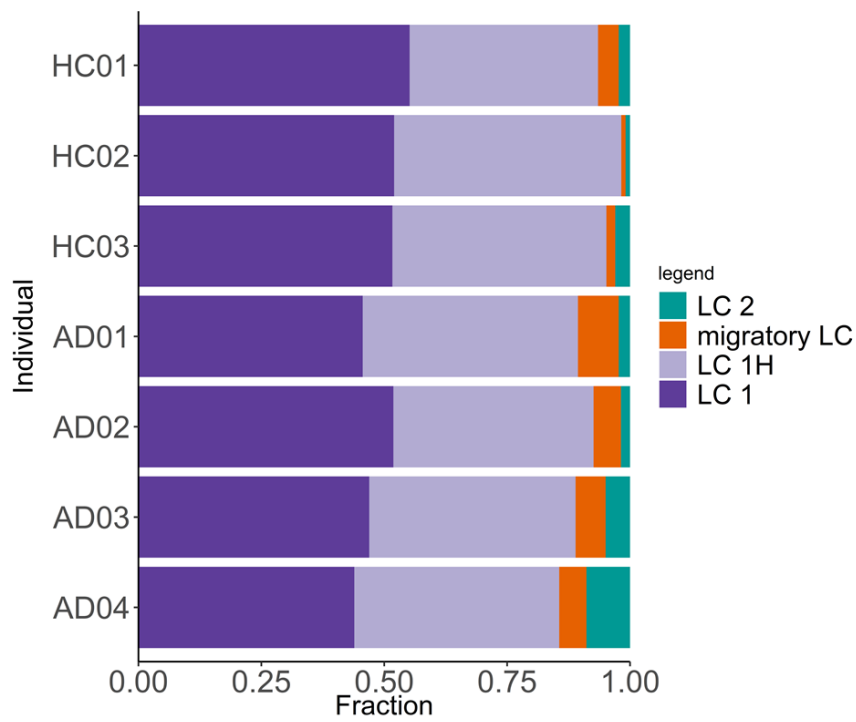


Figure S2 Abundance LC clusters per individual

Proportions of LC subsets present in each individual AD patient and HC, detected through single-cell RNA sequencing.

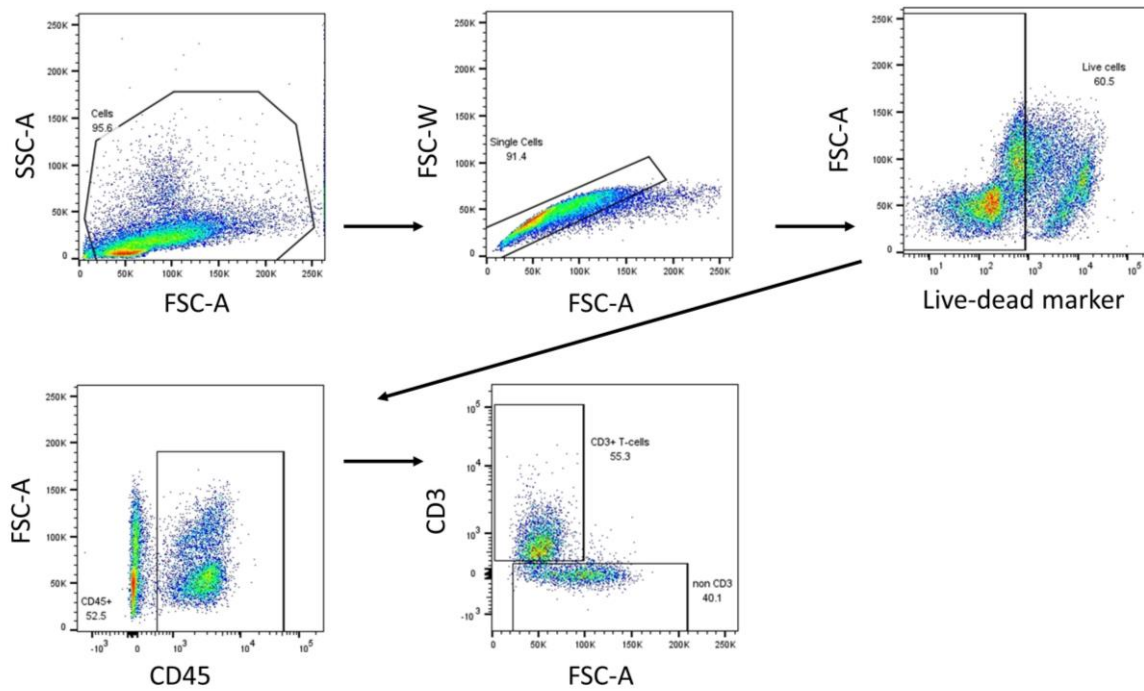


Figure S3 Gating strategy for sorting CD3+ T cells from the dermis

Scatter plots showing the gating strategy used for fluorescence-activated cell sorting (FACS), for single T cells from human dermis as live, CD45⁺CD3⁺ cells. Plots were extracted from Flow Jo (version 10.9.0).

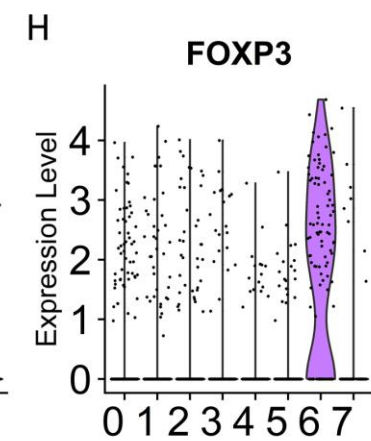
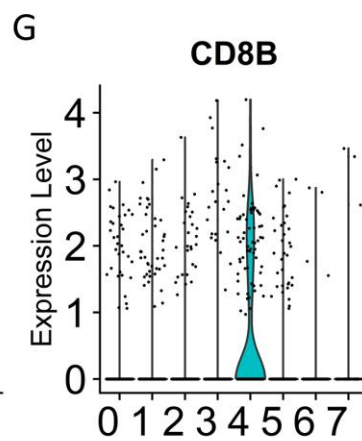
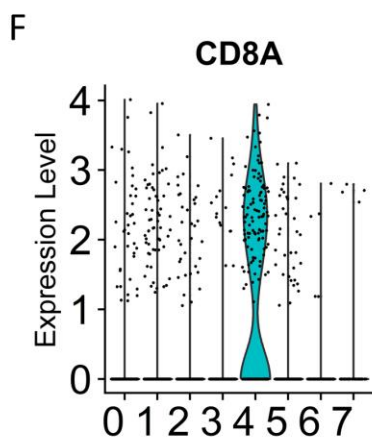
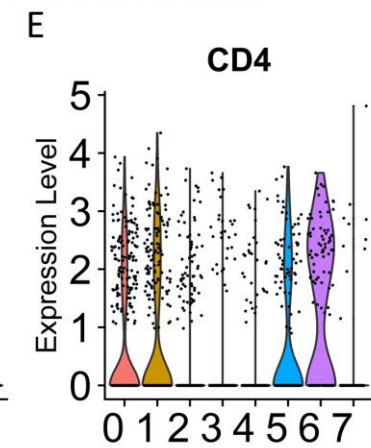
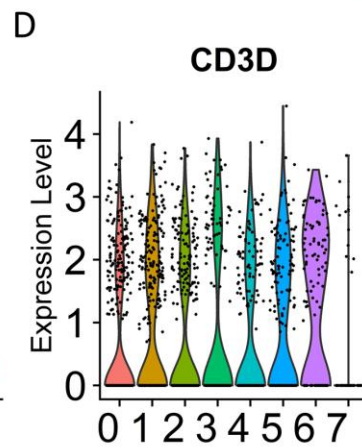
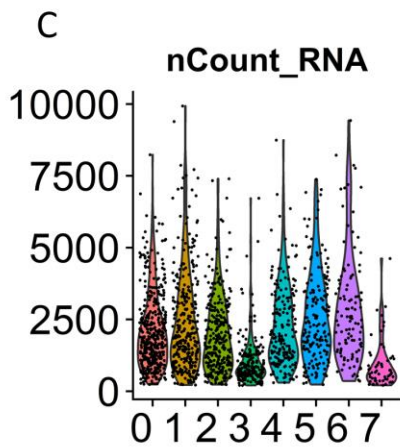
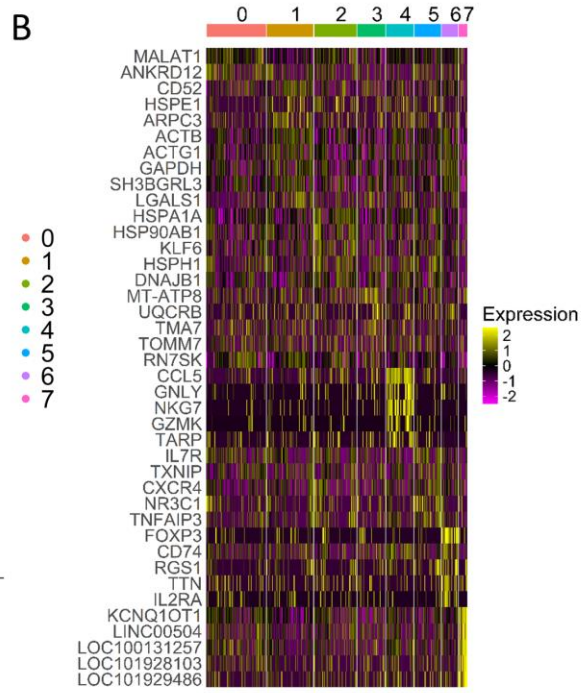
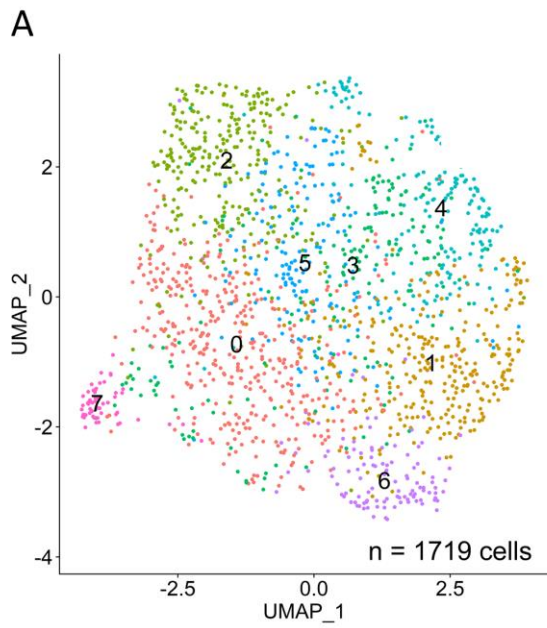


Figure S4 Initial T cell clustering

(A) UMAP plot of 1,719 individual CD3⁺ T cells from healthy and AD dermis, colored by cluster. (B) Heatmap of top 5 upregulated DEGs per cluster. (C) Volcano plot indicating total RNA molecules (nCount_RNA) per cell stratified per cluster. (D) Expression of CD3D gene per cell indicated by cluster (E)-(H) same as in (D) but for CD4 , CD8A, CD8B and FOXP3, respectively.

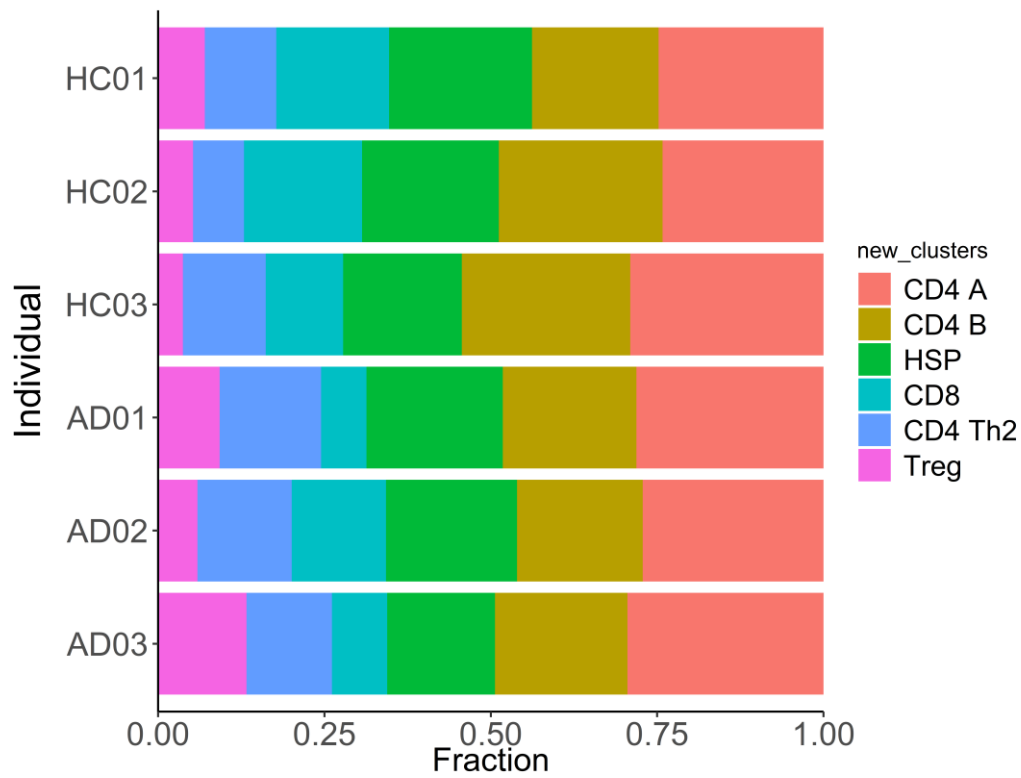


Figure S5 Abundance T cell clusters per individual

Proportions of T cell subsets present in each individual AD patient and HC, detected through single-cell RNA sequencing.

Table S1. Isolated cell numbers per individual after quality control

Individual	Langerhans cells	T cells
AD01	217	249
AD02	108	254
AD03	262	241
AD04	271	NA
HC02	261	242
HC03	225	248
HC04	333	241
	1,677	1,475

Table S5 Curated genesets used in LC analysis

Geneset	Genes	References
FcεR signaling	FCER1A, FCER1G, ALOX5AP, ALOX5, BTK, JUN, FOS, CBL, CBLB, HCLS1, LCP2, NFATC2, PDHB, PLCB2, PLCB3, PLCG1, PLCG2, PLD2, PTPN6, PTPN11	BioCarta; FC epsilon receptor signaling FCER1A harmonizome 3.0 Kegg HSA04664
Prostaglandin and leukotrienes biosynthesis	PLA2G4A, PTGS2, AKR1C3, PTGIS, TBXAS1, PTGDR2, PTGER3, PTGIR, ALOX5, ALOX5AP, ALOX15, NOP9, CYSLTR1, ABCC4, ANXA2, S100A10, S100A6	Honda and kabashima 2019 WP98 wikipathways
C-type lectin receptors and signaling	CLEC10A, CLEC7A, CD207, MRC1, CD209, LY75, CLEC1A, CLEC4A, PYCARD, JUN, SYK, CALM1, PTGS2	Figdor 2002 Liu 2021 Kegg c-type lectin signaling HSA04625

Table S8 Primers used for detection of *tar*-glycosyltransferases

<i>tar</i> gene	Forward primer	Reverse primer
<i>tarS</i>	GTGAACATATGAGTAGTGCGTA	CATAATGTCCTTCGCCAATCAT
<i>tarM</i>	GGGATACCCATATATTTCAAGG	CAATTCGCTTCGTTGGTACCATTG
<i>tarP</i>	GTAAGTGTTATAATGCCAACATT	TATCAGCTTTCGCTACATTTC

Table S9 Fluorescent dyes and antibodies used for cell sorting

Target	Clone	Fluorochrome	Manufacturer
Viability	Fixable Viability Dye	eFluor 506	Invitrogen (65-2860-40)
CD45	HI130	BV711	BioLegend
CD1a	HI149	APC	Becton Dickinson
HLA-DR	G46-6	BV605	Becton Dickinson
CD207	DCGM4	PE	Beckman Coulter
CD8	SK1	PE-Cy7	Sony Biotechnology
CD3	UCHT1	AF700	BioLegend
CD4	RPA-T4	APC-Cy7	BioLegend