

1
2
3
4
5
6
7
8
9
10
11
12
13
14
15
16
17
18
19
20
21
22

Cardiac Troponin Fragmentation After Heavy Physical Exercise The MaraCat2 Study

K. E. Juhani Airaksinen, MD, PhD¹; Tuomas Paana, MD, PhD¹; Tapio Hellman, MD, PhD²; Tuija Vasankari, MSc¹; Selma Salonen, MSc³; Tuulia Tuominen, MSc³, Konsta Teppo, MD, PhD¹, Samuli Jaakkola, MD, PhD¹; Olli J. Heinonen, MD, PhD⁴, Saara Wittfooth, PhD³

¹Heart Center, Turku University Hospital and University of Turku, Turku, Finland

²Kidney Center, Turku University Hospital and University of Turku, Finland

³Biotechnology Unit, Department of Life technologies, University of Turku, Turku, Finland

⁴Paavo Nurmi Centre & Unit for Health and Physical Activity, University of Turku, Turku, Finland

Short title: Troponin fragmentation after marathon race and MI

Word count: 3368

Corresponding author:

Prof. K.E. Juhani Airaksinen, MD, PhD

Heart Center, Turku University Hospital, Turku, Finland

Postal address: Hämeentie 11, PO Box 52, 20521 Turku

Email: juhani.airaksinen@tyks.fi

23

24 **Abstract**

25 **Background:**

26 Elevations of commercial cardiac troponin T (total cTnT) levels are common after strenuous
27 exercise, but there is limited information on whether the troponin composition differs from
28 myocardial infarction (MI).

29 **Methods:**

30 Troponin composition was analyzed in heparin plasma samples taken from 45 runners <1 h after
31 marathon race and from 45 patients with Type 1 MI <12 h after the pain onset. The concentration of
32 long molecular forms of cTnT (long cTnT) was measured with a novel upconversion luminescence
33 assay, total cTnT was measured with a commercial high-sensitivity cTnT assay, and the ratio of
34 long to total cTnT (troponin ratio) was determined.

35 **Results:**

36 Total cTnT exceeded the upper reference limit (>14 ng/l) in 37 (82%) runners. The median total and
37 long cTnT concentrations and the troponin ratio were higher (113 ng/l vs. 25 ng/l, 57 ng/l vs. 4.1
38 ng/l, and 0.36 vs. 0.17, respectively) in patients with MI than in marathon runners ($p < 0.001$ for all
39 comparisons). Troponin ratio decreased ($r = -0.497$, $p < 0.001$) in marathon runners and increased (r
40 $= 0.466$, $p = 0.001$) in patients with MI with increasing troponin release. In the receiver operating
41 characteristics curve analyses of all subjects with cTnT release >14ng/l and those with 15-100 ng/l,
42 long cTnT showed good predictive power with the area under the curve 0.969 (CI95% 0.939-1.000)
43 and 0.937 (95% CI, 0.877–0.996) in discriminating marathon runners from MI patients. The
44 respective values for total cTnT were 0.892 (CI95% 0.823-0.960) and 0.778 (95% CI, 0.656–
45 0.901).

46 **Conclusions:**

47 In contrast to Type 1 MI, after strenuous exercise only a small fraction of circulating cTnT exists as
48 intact cTnT or long molecular fragments. The difference in troponin composition could be of
49 diagnostic value when evaluating post-exercise cTnT elevations in subjects with chest complaints.

50

51

52 **Registration:** URL: <https://www.clinicaltrials.gov>; Unique identifier: NCT06000930

53

54 **Key words:** troponin, exercise, marathon, athlete, myocardial infarction, myocardial injury

55

56

57 **Non-standard Abbreviations and Acronyms**

58

59 **MI** Myocardial infarction

60 **cTnT** Cardiac troponin T

61 **mAb** monoclonal antibodies

62 **aar** amino acid residues

63 **AUC** Area under the curve

64 **ROC** Receiver operating characteristics

65

66 **Clinical Perspective**

67

68 **What Is New?**

- 69
- Short cardiac troponin T (cTnT) fragments were the predominant form of cTnT release after
70 marathon race among 45 runners in contrast to 45 patients with Type 1 myocardial infarction
71 (MI) where intact cTnT and longer fragments are more commonly found in the circulation
72 during the early hours after the attack also in patients with comparable troponin levels.
 - The proportion of short cTnT components decreased ($r = -0.497$, $p < 0.001$) in marathon
73 runners and increased ($r = 0.466$, $p = 0.001$) in patients with MI with increasing troponin
74 release.
75

76 **What Are the Clinical Implications?**

- 77
- The principle of the novel immunoassay could be applied on automated platforms to allow
78 implementation in clinical care and separate benign cTnT elevations after strenuous exercise
79 from those of acute MI in a single sample with better accuracy than the commercial high-
80 sensitivity cTnT test.

81

82

83

84

85

86

87

88 Cardiac troponins are in a key role in the diagnosis of acute myocardial infarction (MI).¹ Minor
89 cardiac troponin elevations are common also after strenuous exercise, causing diagnostic challenges
90 when associated with chest discomfort.^{2,3} The exact mechanisms of cardiac troponin rise after
91 strenuous physical activity remains ill-defined, but according to a small gel filtration
92 chromatography study, the released cardiac troponin T (cTnT) in this condition seems to be
93 predominantly in the form of small molecules.⁴ Temporary increase in permeability of cell
94 membranes may allow the leakage of these smaller cytosolic troponin fragments to circulation.
95 Importantly, the current commercial high-sensitivity cTnT test detects the small and long troponin
96 fragments and the intact cTnT containing the stable central part of the cTnT molecule and is called
97 here the total cTnT assay.

98 In a Proof-of-Principle study, we developed a simple time-resolved immunofluorometric assay
99 based on europium chelate labels for the measurement of long cTnT molecules. The assay showed a
100 high accuracy in discriminating between cTnT elevations in MI and end-stage renal failure.⁵ In the
101 present study protocol, we compared the characteristics of troponin release after a marathon race
102 and Type 1 MI using an improved version of the long cTnT test and the commercial total cTnT test.

103 **Methods**

104 *Patients and samples*

105 A total of 45 recreational runners (31 male) aged 28-75 (median 35) years participating in the Paavo
106 Nurmi Marathon 2023 in Turku were recruited to the MaraCat2 Study (ClinicalTrials.gov Identifier:
107 NCT06000930) with an open email invitation. Eighteen participants finished the full marathon and
108 27 the half-marathon. None of the patients had a history of coronary artery disease. All participants
109 gave a lithium-heparin plasma sample within 60 min after finishing the race.

110 A control group of 45 patients (36 male) with acute MI (25 ST elevation MI) were recruited among
111 patients admitted to Heart Centre of Turku University Hospital (ClinicalTrials.gov Identifiers:
112 NCT04465591 and NCT05858112). Coronary angiography was performed in all included patients
113 to confirm culprit lesion and the MI diagnosis and all included patients were treated with primary or
114 urgent percutaneous coronary intervention. Only patients with a delay less than 12 hours from
115 symptom onset to lithium-heparin plasma sample collection and estimated glomerular filtration rate
116 $> 30 \text{ mL}/\text{min}/1.73\text{m}^2$ were included.

117 All participants provided a written informed consent. The study complies with the Declaration of
118 Helsinki as revised in 2013 and the study protocol was approved by the Medical Ethics Committee
119 of the Hospital District of Southwest Finland.

120 The samples were analyzed fresh for total cTnT. In separate sample tubes the plasma was aliquoted
121 after centrifugation and stored at $-70 \text{ }^\circ\text{C}$ until analysis by the long cTnT assay.

122 123 *Analytical methods*

124
125 The novel highly sensitive two-step heterogenous sandwich-type immunoassay using upconversion
126 luminescence for signal production was used for the detection of long molecular forms of cTnT.⁶
127 The anti-cTnT monoclonal antibodies (mAb) and human cardiac troponin ITC-complex used as a
128 calibrator were obtained from HyTest Ltd (Turku, Finland). The capture antibody (7E7 mAb) and
129 the tracer antibody (1C11 mAb) bind to amino acid residues (aar) 223–242 and 174–190 of cTnT,
130 respectively. The C-terminal region of cTnT between these two epitopes (aar 190–223) contains
131 several cleavage sites and thus, the ability of the assay to detect long forms of cTnT is based on
132 targeting the cTnT molecules that are not degraded at aar 190–223. The limit of detection and limit
133 of quantitation of this assay are 0.4 ng/l and 1.8 ng/l, respectively⁶.

134
135 Total cTnT was analyzed using a commercial high-sensitivity cTnT assay (Elecsys hs-cTnT, Roche
136 Diagnostics GmbH, Mannheim, Germany). For this assay, the limits of detection and quantitation

137 are 3 ng/l and 13 ng/l, respectively. The ratio of long cTnT forms/total cTnT (troponin ratio) was
138 used as the measure of troponin fragmentation.⁵

139 *Statistical analysis*

140
141 Continuous variables are reported as median (25th – 75th percentiles) and categorical variables as
142 counts (percentage). Mann–Whitney *U* test was used for group comparisons. Chi-squared test and
143 Fisher's exact test were used for categorical variables as appropriate. Correlation between
144 continuous variables was estimated using the Spearman's test. Linear regression analysis was used
145 to identify factors significantly relating to total and long cTnT levels and their ratio in marathon
146 runners and MI patients. All predictors with a *p* value < 0.1 in univariate analysis were included in
147 the final regression model. Receiver operating characteristics (ROC) curve analyses were performed
148 to estimate the area under the curve (AUC) to measure the discriminative capacity of cTnT, long
149 cTnT and the troponin ratio between marathon runners and MI patients. Additional analyses were
150 performed to assess their discriminative capacity between marathon runners and MI patients with
151 cTnT levels ranging from 15 to 100 ng/l, the cTnT level considered to be most important in the
152 differential diagnosis between MI and exercise-induced cTnT release. All tests were two-sided, and
153 the limit of significance was set at *p* < 0.05. Sigmaplot 15 (Inpixon, California) was used for the
154 comparison of ROC curves and IBM SPSS Statistics software version 26.0 was used to perform all
155 other analyses.

156

157

158

159 **Results**

160

161 *Total cTnT, long cTnT, and troponin ratio in marathon runners and patients with myocardial* 162 *infarction*

163 None of the runners reported cardiac symptoms after the race. Total cTnT exceeded the upper
164 reference limit (>14 ng/l) in 37 (82%) runners with a median concentration of 25.0 ng/l (range 7-63

165 ng/l). Median long cTnT concentration was 4.1 ng/l (range 1-8.4 ng/l) (Table 1). The total and long
166 cTnT levels were higher after full marathon than after half-marathon (33 (25-47 ng/l) vs. 20 (11-27
167 ng/l) and 5.6 (3.6-7.6 ng/l) vs. 3.3 (2.2-4.7 ng/l), $p = 0.002$ for both comparisons). Troponin ratio
168 decreased significantly ($r = -0.497$, $p < 0.001$) with increasing total cTnT release (Figure 1).
169 Both the total cTnT and long cTnT concentrations as well troponin ratio were higher ($p < 0.001$ for
170 all) in MI patients than in marathon runners (Table 1). In contrast to the marathon runners, in MI
171 patients troponin ratio increased significantly ($r = 0.466$, $p = 0.001$) with increasing total cTnT
172 release (Figure 1). Total cTnT and long cTnT concentrations and troponin ratio were not related to
173 the time delay from pain onset to blood sampling or any clinical features of the MI patients listed in
174 Table 1.

175

176 ***Diagnostic performance of long cTnT measurement***

177 To assess the diagnostic value of long cTnT, we compared the troponin composition of the 37
178 marathon runners having elevated total cTnT levels (>14 ng/l) with all MI patients and with a
179 subgroup of MI patients ($N=22$) having total cTnT less than 100 ng/l. In both of these analyses,
180 total cTnT, long cTnT and troponin ratio were higher ($p < 0.001$) in patients with MI (Figure 2).
181 In the ROC curve analyses, both the total and long cTnT showed excellent predictive power in
182 discriminating marathon runners from MI patients with a small but statistically significance
183 difference in favor of long cTnT, with respective AUCs of 0.892 (CI95% 0.823-0.960) and 0.969
184 (CI95% 0.939-1.000) ($p = 0.012$). The cutoff point of 8.2 ng/l for the long cTnT ratio showed a
185 sensitivity of 86.7% ja specificity of 97.3% in separating runners and MI patients (Figure S1).
186 When restricting the analysis only in subjects with total cTnT concentration from 15 to 100 ng/l, the
187 respective AUC values for total cTnT and long cTnT were 0.778 (95% CI, 0.656–0.901) and 0.937
188 (95% CI, 0.877–0.996) ($p = 0.007$).

189

190

191 **Discussion**

192

193

194 As expected, the majority of runners had post-race cTnT levels above the rule-in criteria for the
195 diagnosis of acute MI and the troponin release was more marked after running the full marathon.

196 Most importantly, we showed that short cTnT fragments are the predominant form of cTnT release
197 after marathon race in contrast to Type 1 MI where longer and intact cTnT forms are more
198 commonly found in the circulation during the early hours after MI also in patients with comparable
199 troponin levels.

200 The present findings on troponin fragmentation after exercise are in line with the gel filtration
201 chromatography study by Vroeman et al showing in 10 runners with a postrace cTnT exceeding 70
202 ng/l that this cTnT release concerned only secondary cTnT fragments of which the N-terminal and
203 C-terminal ends of the protein were cleaved off.⁴ The results with our sensitive immunoassay
204 technique confirmed this in a larger group of runners and with less profuse troponin release.
205 Importantly, we could show that the magnitude of long cTnT release remained at a low level in spite
206 of increasing release of total cTnT. The current finding on smaller troponin fragments as the
207 predominant component of circulating cTnT after exercise is similar to the troponin composition
208 seen in patients with end-stage renal failure, although the long cTnT levels in renal patients were
209 slightly lower than the present concentrations after exercise.^{5,7} In MI, intact and longer forms of
210 troponin were the predominant form of troponin release in patients with extensive myocardial
211 damage, which is in line with previous reports on small groups of patients with large ST elevation
212 MI.^{5,8,9} As a novel finding, our sensitive test showed that the troponin composition was related to
213 the magnitude of myocardial injury and the cTnT release included more smaller components in
214 patients with milder myocardial injury.

215 Proposed mechanisms for exercise-induced cTnT elevations include increased cell membrane
216 permeability or cellular release of proteolytic troponin degradation products during exercise.³

217 Enhanced myocyte turnover, necrosis, and apoptosis are among other potential mechanisms of
218 cardiac troponin release. The role of temporary increase in cell membrane permeability is supported
219 by small cardiac magnetic resonance imaging studies which have detected myocardial oedema,
220 transient increases in mean diffusivity and extracellular volume with a positive correlation to
221 troponin release after marathon race.^{10,11,12}

222 In clinical practice problems may arise when subjects present with chest pain to the emergency
223 department shortly after strenuous exercise and have elevated troponin levels. Electrocardiogram is
224 often normal, but in some cases athlete's heart may complicate the interpretation. The present
225 observations on marked differences in troponin composition between Type 1 MI and exercise-
226 induced benign troponin release could be helpful in the diagnostic workup of the patients in the
227 "grey zone" of mildly elevated troponin release.

228 Earlier research on troponin fragmentation has employed gel filtration chromatography, Western
229 blotting and mass spectrometry, techniques that are too complicated for clinical use.^{4,8,9} The low
230 analytical sensitivity of these methods is another obstacle for clinical applications.^{4,9} In contrast, our
231 immunoassay approach is a significantly more sensitive method for the analysis of cTnT
232 fragmentation. Importantly, the principle of our assay could be applied on automated platforms to
233 allow implementation in clinical care to improve the accuracy and rapidity of laboratory diagnostics
234 of MI.

235 Our study group was quite small and the troponin release after the race was less than in many
236 previous reports. We did not collect blood samples before the race, but based on earlier research,
237 chronic elevation of troponins in these healthy subjects is unlikely.^{2,3} In some patients the long
238 cTnT concentrations were higher than the total cTnT values in our study. This is likely due to
239 differences in the calibration of the assays. It should be noted, that fragmentation of troponins

240 seems to be a continuous process after MI.^{5,13} Longer delays between MI symptom onset and
241 sampling are likely to dilute the observed differences in troponin composition.

242 In conclusion, this novel highly sensitive long cTnT immunoassay shows that the troponin release
243 after strenuous exercise is composed mainly of smaller troponin fragments. The test holds promise
244 that measuring long cTnT forms could help to separate benign cTnT elevations after strenuous
245 exercise from those of acute MI in a single sample with better accuracy than the commercial high-
246 sensitivity cTnT test.

247

248

249 **Acknowledgements**

250 We would like to thank Jaana Rosenberg from the University of Turku for providing us with the
251 upconverting nanoparticle labels.

252

253 **Sources of Funding**

254 This work was supported by the Finnish Foundation for Cardiovascular Research, Helsinki,
255 Finland, Clinical Research Fund (EVO) of Turku University Hospital, Turku, Finland, the Finnish
256 Society of Clinical Chemistry, Helsinki, Finland, the Turku University Foundation, Turku, Finland,
257 and the Varsinais-Suomi Regional Fund of the Finnish Cultural Foundation, Turku, Finland.

258 The funding organizations had no role in the design and conduct of the study; collection,
259 management, analysis, and interpretation of the data; preparation, review, or approval of the
260 manuscript; and decision to submit the manuscript for publication.

261

262 **Disclosures**

263 K.E. Juhani Airaksinen: Research grants from the Finnish Foundation for Cardiovascular Research
264 and Clinical Research Fund of Turku University Hospital, Turku, Finland. Lectures for Astra
265 Zeneca, Bayer, Boehringer Ingelheim, Pending patent application WO2023187258 (A1) - ASSAY
266 FOR LONG FORMS OF CARDIAC TROPONIN T

267 Tuomas Paana: Lectures for Astra Zeneca

268 Tuija Vasankari: Pending patent application WO2023187258 (A1) - ASSAY FOR LONG FORMS
269 OF CARDIAC TROPONIN T

270 Selma Salonen: None

271 Tuulia Tuominen: None

272 Tapio Hellman: Lectures for AstraZeneca, Astellas and GSK, Pending patent application
273 WO2023187258 (A1) - ASSAY FOR LONG FORMS OF CARDIAC TROPONIN T

274 Konsta Teppo: Research grants from The Finnish Foundation for Cardiovascular Research, Aarne
275 and Aili Turunen Foundation, The Finnish Medical Foundation, The Finnish Foundation for Alcohol
276 Studies and the Finnish State Research Funding.

277 Samuli Jaakkola: Lectures for Amgen, Boehringer Ingelheim, BMS Pfizer

278 Olli J. Heinonen: None

279 Saara Wittfooth: Research grants from the Finnish Society of Clinical Chemistry, the Turku
280 University Foundation and the Varsinais-Suomi Regional Fund of the Finnish Cultural Foundation,
281 and the Finnish Foundation for Cardiovascular Research. Research funding from Business Finland,
282 official Finnish government agency for trade and investment promotion, innovation funding, travel
283 promotion and talent attraction. Pending patent application WO2023187258 (A1) - ASSAY FOR
284 LONG FORMS OF CARDIAC TROPONIN T

285

286

287 **References**

- 288 1. Thygesen K, Alpert JS, Jaffe AS, et al. Fourth universal definition of myocardial infarction
289 (2018). *Eur Heart J*. Published online August 2018. doi:10.1093/eurheartj/ehy462
- 290 2. Paana T, Jaakkola S, Bamberg K, et al. Cardiac troponin elevations in marathon runners.
291 Role of coronary atherosclerosis and skeletal muscle injury. The MaraCat Study. *Int J*
292 *Cardiol*. 2019;295:25-28. doi:10.1016/j.ijcard.2019.08.019
- 293 3. Aengevaeren VL, Baggish AL, Chung EH, et al. Exercise-Induced Cardiac Troponin
294 Elevations: From Underlying Mechanisms to Clinical Relevance. *Circulation*.
295 2021;144(24):1955-1972. doi:10.1161/CIRCULATIONAHA.121.056208
- 296 4. Vroemen WHM, Mezger STP, Masotti S, et al. Cardiac Troponin T: Only Small Molecules
297 in Recreational Runners After Marathon Completion. *J Appl Lab Med*. 2019;3(5):909-911.
298 doi:10.1373/JALM.2018.027144
- 299 5. Airaksinen KEJ, Aalto R, Hellman T, Vasankari T, Lahtinen A, Wittfooth S. Novel Troponin
300 Fragmentation Assay to Discriminate Between Troponin Elevations in Acute Myocardial
301 Infarction and End-Stage Renal Disease. *Circulation*. 2022;146(18):1408-1410.
302 doi:10.1161/CIRCULATIONAHA.122.060845
- 303 6. Salonen SM, Tuominen TJK, Raiko K, Vasankari T, Aalto R, Hellman T, Lahtinen S, Soukka
304 T, Airaksinen KEJ, Wittfooth S. Highly sensitive immunoassay for long forms of cardiac
305 troponin T using upconversion luminescence. *Clin Chem* (in press)
- 306 7. Mingels AMA, Cardinaels EPM, Broers NJH, et al. Cardiac troponin T: Smaller molecules in
307 patients with end-stage renal disease than after onset of acute myocardial infarction. *Clin*
308 *Chem*. 2017;63(3):683-690. doi:10.1373/clinchem.2016.261644

- 309 8. Cardinaels EPM, Mingels AMA, Van Rooij T, Collinson PO, Prinzen FW, Van Dieijen-
310 Visser MP. Time-dependent degradation pattern of cardiac troponin T following myocardial
311 infarction. *Clin Chem*. 2013;59(7):1083-1090. doi:10.1373/clinchem.2012.200543
- 312 9. Vylegzhanina A V., Kogan AE, Katrukha IA, et al. Full-size and partially truncated cardiac
313 troponin complexes in the blood of patients with acute myocardial infarction. *Clin Chem*.
314 2019;65(7):882-892. doi:10.1373/clinchem.2018.301127
- 315 10. Aengevaeren VL, Froeling M, Hooijmans MT, et al. Myocardial Injury and Compromised
316 Cardiomyocyte Integrity Following a Marathon Run. *JACC Cardiovasc Imaging*.
317 2020;13(6):1445-1447. doi:10.1016/J.JCMG.2019.12.020
- 318 11. Eijsvogels TMH, Aengevaeren VL. Exercise-induced myocardial damage is associated with
319 cardiac edema and dysfunction: adding another piece to the troponin puzzle. *Eur J Appl*
320 *Physiol*. Published online July 26, 2023. doi:10.1007/s00421-023-05282-5
- 321 12. Gaudreault V, Tizon-Marcos H, Poirier P, et al. Transient Myocardial Tissue and Function
322 Changes During a Marathon in Less Fit Marathon Runners. *Can J Cardiol*.
323 2013;29(10):1269-1276. doi:10.1016/j.cjca.2013.04.022
- 324 13. Vylegzhanina A V., Kogan AE, Katrukha IA, et al. Full-size and partially truncated cardiac
325 troponin complexes in the blood of patients with acute myocardial infarction. *Clin Chem*.
326 2019;65(7):882-892. doi:10.1373/clinchem.2018.301127

327

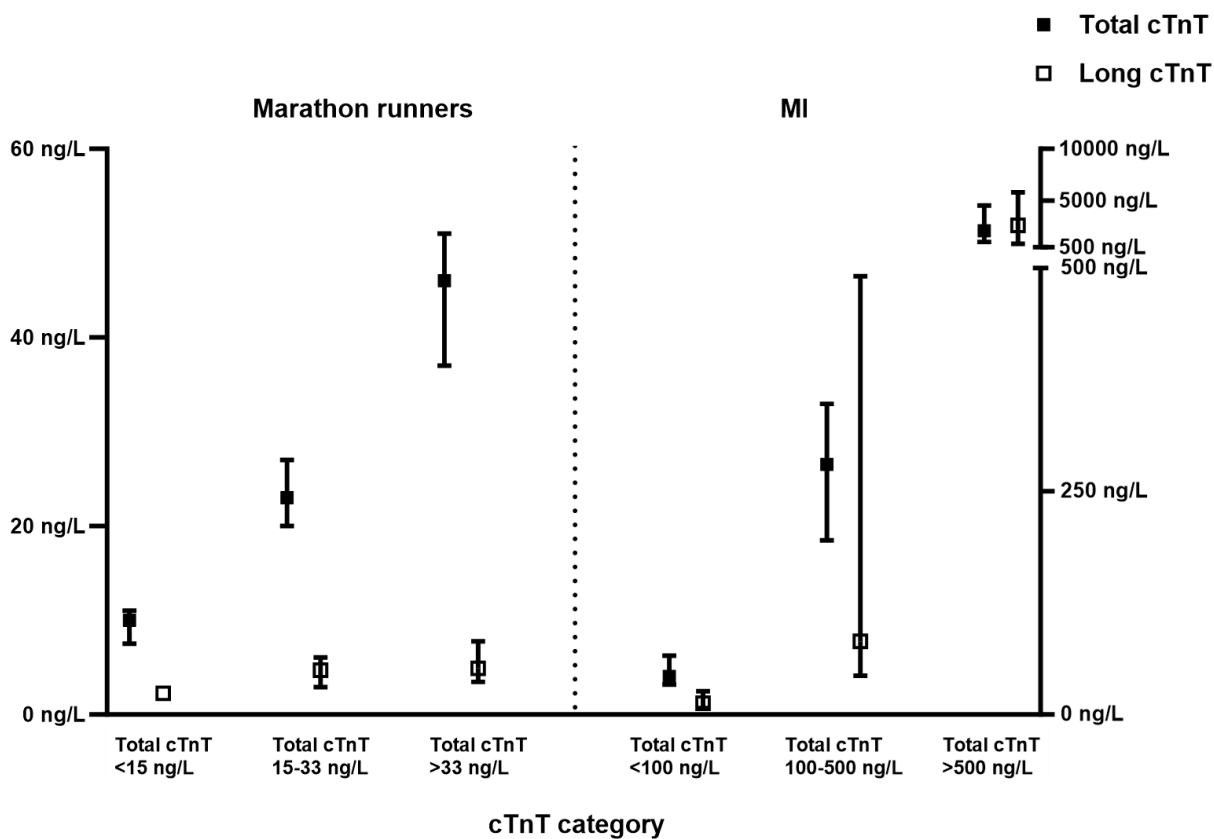
328

329

330 **Table 1.** Clinical Characteristics and Total and Long cTnT and Their Ratio (Troponin Ratio) in the
331 Study Groups.

	Marathon runners (n =45)	MI patients (n = 45)	p
Age, y	35 (31-61)	69 (57-76)	<0.001
Female gender	14 (31.1)	9 (20.0)	0.334
Hypertension	0 (0)	25 (55.6)	<0.001
Diabetes	1 (2.2)	10 (22.2)	0.007
Heart failure	0 (0)	1 (2.2)	1.0
Atrial fibrillation	1 (2.2)	5 (11.1)	0.203
Creatinine, µg/l	101 (89-124)	79 (67-89)	<0.001
Total cTnT, ng/l	25.0 (16-36)	113 (43-1000)	<0.001
Long cTnT, ng/l	4.1 (2.4-5.8)	57 (13-854)	<0.001
Troponin ratio	0.17 (0.11- 0.24)	0.36 (0.24- 1.31)	<0.001

332 Values are medians (25th – 75th percentile) for continuous variables and n (%) for categorical
333 variables. MI, myocardial infarction; Total cTnT, commercial high-sensitivity cardiac troponin T;
334 long cTnT, long molecular forms of cTnT.

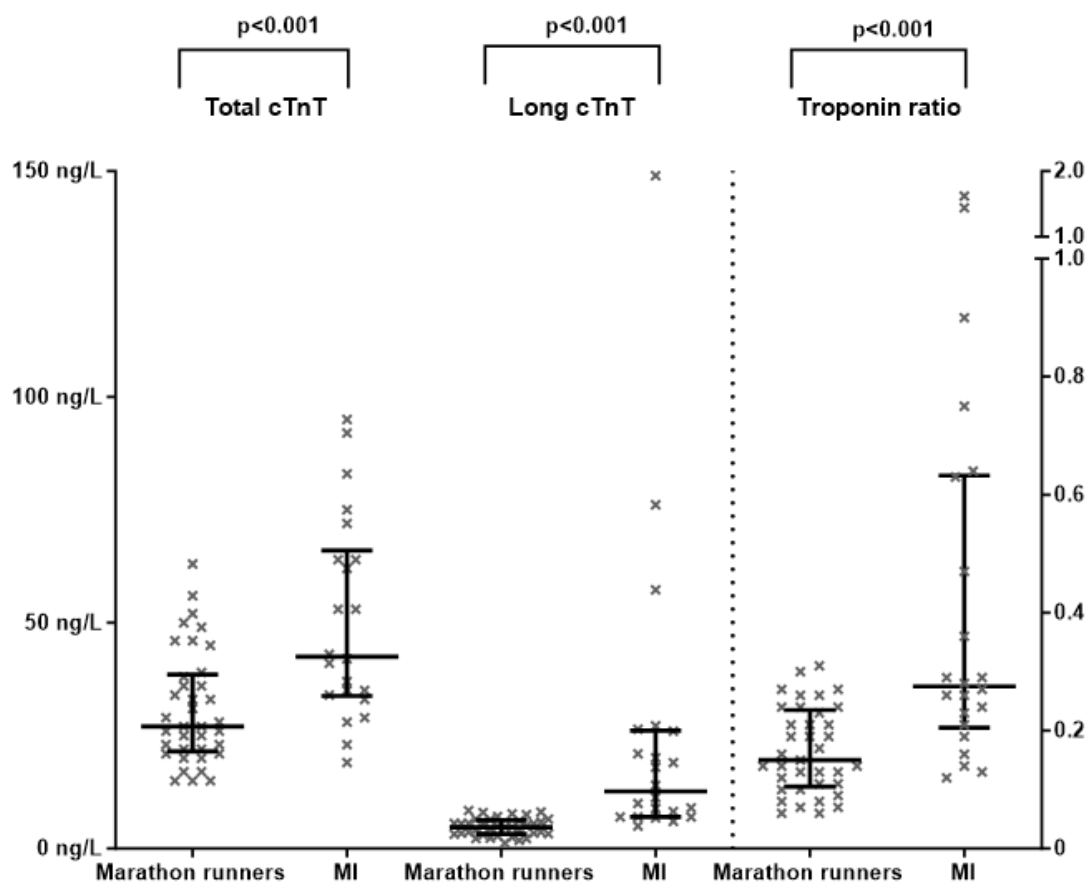
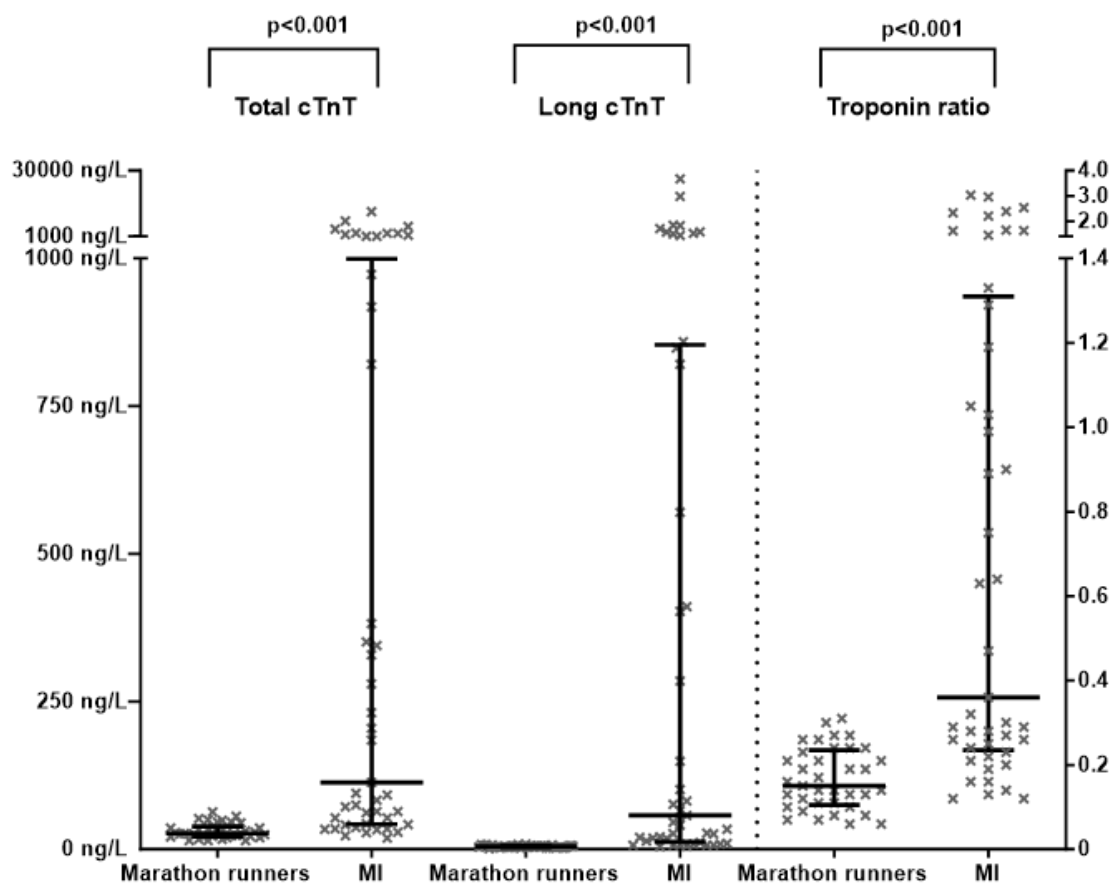


335

336

337 **Figure 1. Concentrations of long forms of cTnT (long cTnT) in relation to the magnitude of**
338 **total cTnT release. The share of long cTnT of total cTnT (troponin ratio) decreased ($r = -0.497$, p**
339 **<0.001) with increasing total cTnT release in marathon runners and increased ($r = 0.466$, $p = 0.001$)**
340 **in patients with myocardial infarction (MI).**

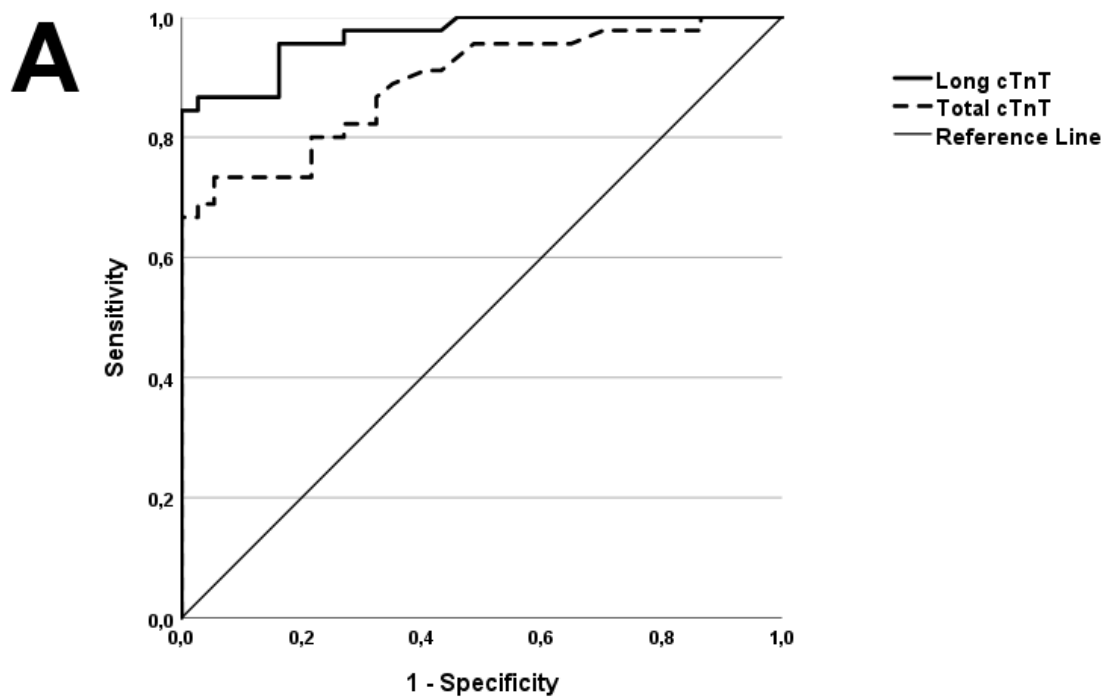
341



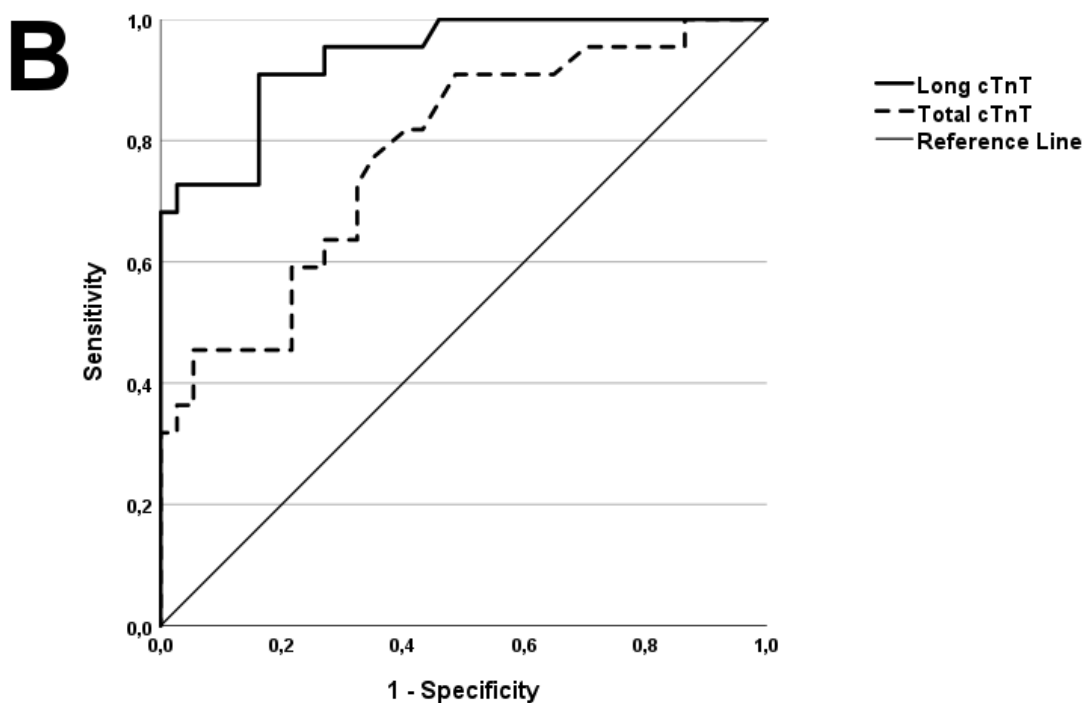
343

344 **Figure 2. Immunoassay for long cTnT forms to discriminate between marathon runners with**
345 **total cTnT >14ng/L and patients with MI.** Total cTnT, long cTnT forms (Long cTnT), and
346 troponin ratio (ratio of long cTnT forms to total cTnT) in marathon runners with total cTnT >14ng/l
347 and in patients with myocardial infarction (MI) and <12-hour delay between symptom onset and
348 blood sampling (Upper Panel) and in a subgroup of patients with total cTnT 15-100 ng/l (Lower
349 Panel).

350



351
352
353



354
355
356

357 **Figure S1.**

358 **Receiver operating characteristic curves depicting the discriminative capacity of long cTnT**

359 **(full line) and total cTnT (dotted line) between marathon runners with cTnT release >14ng/l**

360 **and MI patients.** (all patients: AUCs of 0.892 [CI95% 0.823-0.960] and 0.969 [CI95% 0.939-

361 1.000] [panel A]; and MI patients with total cTnT release 15-100 ng/L: 0.778 [95% CI, 0.656-

362 0.901] and 0.937 [95% CI, 0.877-0.996] [panel B]). AUC indicates area under the curve; MI, acute

363 Type 1 myocardial infarction with time from pain onset to blood sample < 12 hours; cTnT, cardiac

364 troponin T.

365