

# 1 Identifying weather patterns affecting household date palm 2 sap consumption in Bangladesh, 2013-2016.

3

4 Jules Jackson<sup>1</sup> Ireen Sultana Shanta<sup>2</sup>, Clifton McKee<sup>1</sup>, Stephen P Luby<sup>3</sup>, Najmul Haider<sup>4</sup>, Yushuf  
5 Sharker<sup>5</sup>, Raina Plowright<sup>6</sup>, Peter Hudson<sup>7</sup>, Emily Gurley<sup>1,3</sup>

6

7

8

9 <sup>1</sup>Department of Epidemiology, Johns Hopkins Bloomberg School of Public Health, Baltimore, MD,  
10 USA.

11 <sup>2</sup>International Centre for Diarrhoeal Disease Research, Bangladesh, Dhaka, Bangladesh.

12 <sup>3</sup>Division of Infectious Diseases and Geographic Medicine, Stanford University, Stanford, CA,  
13 USA.

14 <sup>4</sup>School of Life Sciences, Faculty of Natural Sciences, Staffordshire, United Kingdom

15 <sup>5</sup>Center for Data Research and Analytics LLC, Bethesda, MD, USA.

16 <sup>6</sup>Department of Public and Ecosystem Health, Cornell University, Ithaca, NY, USA.

17 <sup>7</sup>Center for Infectious Disease Dynamics, Pennsylvania State University, State College, PA, USA.

18

19

20

21

22

23

24

## 25 **Abstract**

26

27 Nipah virus spillovers via consumption of date palm sap in Bangladesh vary substantially  
28 between years and have been associated with lower winter temperatures and precipitation.  
29 However, the mechanisms driving the interannual variation and the influence of weather remain  
30 unexplained. Here we investigated the hypothesis that weather patterns change human sap  
31 consumption and explain interannual variation in observed spillovers. We analyzed responses  
32 from a nationally representative survey conducted among 10,000 households in Bangladesh in  
33 2013-2016 on household date palm sap consumption and weather data for each division of  
34 Bangladesh, using logistic regression to examine whether sap consumption is associated with  
35 weather variability. We found significant associations of lower minimum temperatures and  
36 precipitation with increased household sap consumption during the sap harvesting season. This  
37 relationship was largely similar within all months and divisions, and strong associations of  
38 temperature ( $\chi^2(1, n=5,027) = 7.74, p < 0.01$ ) and, independently, precipitation ( $\chi^2 = 8.00, p <$   
39  $0.01$ ) remained strong after accounting for month, location, and annual sap season. Interannual  
40 variation in date palm sap consumption in Bangladesh is likely best explained by temperature  
41 and precipitation patterns, where colder, drier winter days pose a higher risk for Nipah virus  
42 spillover. The synthesis of approaches to determine the driving forces of seasonality in our study  
43 may be a valuable method for investigating seasonality in other zoonotic pathogens.

44

45

## 46 **Introduction**

47

48           Date palm sap consumption is a longstanding practice in Bangladesh and nearby regions  
49 in South Asia, where date palm trees have been cultivated for centuries for their sap [1]. The  
50 practice was linked to Nipah virus spillovers after in-depth interviews and case-control analysis  
51 during an outbreak in 2005 [2] and drinking sap has been a consistent risk factor for human  
52 Nipah virus infection through years of case-control risk factor analyses [3, 4]. Nipah virus case  
53 fatality is approximately 70% in South Asia and person-to-person transmission commonly occurs  
54 [5], posing a risk for highly fatal regional outbreaks, or possibly pandemics. Bangladesh has  
55 reported more spillover events than any other country since its first reported human cases in  
56 2001 [6]. By better understanding the factors that contribute to Nipah spillovers we can better  
57 identify key targets for intervention that can prevent future cases of Nipah virus spillovers, and  
58 subsequent outbreaks.

59

60           Though date palm sap is tapped year-round for various purposes, the sap is only  
61 consumed raw in the winter months between November and April when the temperatures are  
62 sufficiently low to keep the sap fresh, herein referred to as the sap season. Bats are thought to  
63 introduce the virus into the sap through shedding from bodily fluids (saliva and urine) while  
64 consuming the sap during the tapping process [7]. However, current understanding of the  
65 nuances of sap consumption in humans remains limited.

66

67           Nipah virus spillovers in Bangladesh have occurred more frequently during years with  
68 colder winter temperatures [8]; furthermore, investigation has shown weekly minimum  
69 temperatures to be a strong predictor of spillover [9]. Several hypotheses have been suggested to

70 explain this correlation. One hypothesis is that the virus may survive longer in colder and drier  
71 conditions. However, examinations of Nipah virus survival in fruit juices with a comparable pH  
72 to date palm sap showed a survival time of several days at temperatures warmer than those  
73 observed in Bangladesh during the November–April sap harvesting season [10].

74

75 A second hypothesis is that colder temperatures could be affecting the behavior of the  
76 reservoir, *Pteropus medius*. The stress of colder weather may impose increased energy demands  
77 on bats, and the availability of the fruits that compose the majority of their diet is reduced during  
78 the winter months. These conditions may lead bats to turn more frequently to a reliable food  
79 source with a high sugar content such as date palm sap when it is available, especially so during  
80 the coldest days of the sap season [7]. However, though bats did access sap more frequently  
81 during the cooler winter and springtime months, the frequency of *P. medius* visits to date palm  
82 trees in winter was not significantly related to temperature on a daily level in a three-year study  
83 [11].

84

85 A third hypothesis is that human date palm sap consumption changes based on  
86 temperature. A recent study identified significant differences in the frequency of household sap  
87 consumption from year to year. One potential explanation is that humans drink more sap during  
88 the coldest days of the winter when sap is more abundant and they report that the sap is sweetest  
89 [12, 13] (Fig 1). More recently, lower precipitation in the month preceding the spillover event  
90 was also observed to be a predictor of spillover risk, along with El Niño Southern Oscillation  
91 cycles with a lag of three months [14]. One speculative explanation for this is that rain during the  
92 tapping process may dilute the sap, making it less sweet and less appealing to buyers. Of all the

93 proposed hypotheses for the weather-spillover relationship, these have received the least  
94 attention.

95

96 In this study, we aim to examine associations between weather patterns in Bangladesh  
97 and household date palm sap consumption in Bangladesh 2013-2016.

98

99

## 100 **Methods**

101

### 102 **Sap consumption**

103 To investigate changes in date palm sap consumption over time, we used data from a  
104 nationally representative household survey of adults in Bangladesh performed between  
105 September 2013 and August 2016. Additional details on study design and sampling strategy can  
106 be found in Shanta et al., 2023 [15]. The study was conducted in 10,002 households in 1,001  
107 communities representing both urban and rural populations across the 7 administrative divisions  
108 of Bangladesh. Communities were randomized within 16 strata of population size in all  
109 administrative divisions each season of the study period (winter: November–February, summer:  
110 March–June, and rainy: July–October) to ensure comparability in terms of number of  
111 communities enrolled between each season and location for the duration of the study.  
112 Households were identified by a modified random walk method, using the main entrance of the  
113 homestead with the most recent wedding in rural communities, and ward entrance as random  
114 starting points for urban communities. In rural areas, the house to the left of the main homestead  
115 was enrolled first, then every third household was approached in that direction for enrollment

116 until 10 households had been enrolled. In the case that the household declined study  
117 participation, each successive household was approached. In urban areas, surveyors chose  
118 dwellings by randomly selecting from envelopes containing cardinal directions in each sampled  
119 ward. Teams then followed the direction until reaching an administrative boundary of the ward,  
120 selecting the first dwelling at the boundary, then approaching every fifth dwelling by proximity  
121 for enrollment. Participants were selected from adults within households for their willingness to  
122 discuss select household activities that occurred in the past month relative to the date of the  
123 survey, including the harvesting and drinking of date palm sap by household members.  
124 Participants without a recorded response and those who responded “Don’t know” were excluded  
125 from analysis.

126

## 127 **Weather data**

128 To investigate the association of weather and date palm sap consumption, weather data  
129 were retrieved from 10 weather stations in Bangladesh included in the National Centers for  
130 Environmental Information’s (NCEI) Past Weather database ([https://www.ncei.noaa.gov/past-  
131 weather/](https://www.ncei.noaa.gov/past-weather/)), managed by the National Oceanic and Atmospheric Association (NOAA) (S1 Fig.)  
132 The administrative division of each weather station was identified from geographic coordinates  
133 provided by the NCEI’s Historical Observing Metadata Repository (HOMR) location  
134 information. Further weather data were acquired from the Bangladesh Meteorological  
135 Department. Weather data included daily summaries of average, minimum, and maximum  
136 temperatures, cumulative precipitation, dew point temperature, surface pressure, and visibility  
137 from July 2013 through December of 2016. When multiple stations were included within a single  
138 division, daily summary values were averaged across the stations and the resulting mean daily

139 value within that division was used. Daily values for relative humidity were calculated using  
140 daily values for dew point and temperature from each station across Bangladesh.

141

## 142 **Analysis**

143 Monthly averages of daily values of average temperature, minimum temperature,  
144 cumulative precipitation, relative humidity, and visibility were calculated over the entire study  
145 period. Because survey responses were obtained continuously throughout months, monthly  
146 averages were calculated as both categorical (i.e., the average of daily values in the division over  
147 the month attributed to all responses in the division that month) and as a moving average. The  
148 moving average was determined using the daily observations within the division over the 30 days  
149 preceding the response to better cover the time period directly relevant to the survey  
150 respondents' household sap consumption ("In the past month..."). When there were insufficient  
151 observations to calculate a moving average for that day and location, values were imputed with  
152 the last observed value carried forward within the division. For each response, both the  
153 categorical monthly averages and 30-day moving averages of weather variables were examined.

154

155 We first investigated the association between sap consumption and weather during the  
156 sap season by summarizing consumption across locations, months, and sap seasons. Monthly sap  
157 consumption was treated categorically outside of regression analysis. All data analysis and  
158 visualization was performed using R (v4.3.1) [16].

159

160 Date palm sap consumption is highly seasonal and limited to the months of November-  
161 April; we therefore limited our further statistical analysis to responses from those months to

162 avoid effect size overestimates of the association between date palm sap consumption and  
163 weather due to the seasonality of consumption. For our analysis, we focused on the association  
164 between household sap consumption and minimum temperature rather than average temperature  
165 for purposes of comparability with previous analyses by McKee et al., 2021 [8] and Cortes et al.,  
166 2018 [9], as well as to better reflect the nighttime conditions during which sap is allowed to flow  
167 before harvest in the morning. For each response, we explored both categorical monthly averages  
168 and moving 30-day averages of weather variables.

169  
170 We used likelihood ratio  $\chi^2$  tests to compare relative fit between null and extended  
171 models of sap consumption to determine how weather contributed to model fit past the expected  
172 effects of location and month. As significant relationships between division, month, and  
173 household sap consumption were previously identified [3], those two variables were included in  
174 our null model. We also included sap season in the null model to account for the possibility of  
175 year-to-year differences in sap consumption due to previous interventions on sap consumption.  
176 Extended models included categorical and moving averages of minimum temperature,  
177 cumulative precipitation, visibility, and relative humidity to determine whether interannual  
178 variance in weather conditions contributed to explaining patterns of seasonal sap consumption  
179 beyond the expected geographic and monthly differences.

180  
181 To further explore the possibility that variation in sap consumption may be due to  
182 seasonal differences such as changing attitudes towards sap consumption, we used receiver  
183 operating characteristic (ROC) curves of weather and season to determine their ability to classify  
184 predicted probabilities of date palm sap consumption. We performed model selection to



185 determine the combination of categorical and weather variables that resulted in the best fit using  
186 Akaike's information criterion, corrected for the small sample size of the outcome (AICc).

187

188

## 189 **Results**

190

191 Seven percent (361/5024) of respondents reported household sap consumption in the past  
192 month during the sap season (November-April). Data on sap consumption during the sap season  
193 was missing for 3 households.

194

195 Reported consumption was highest during the 2013-2014 season, with 12% (193/1675) of  
196 respondents reporting consumption (Table 1). Peak sap consumption occurred in January and  
197 February in each sap season of the study (S2 Fig), with 15% (124/857) and 15% (102/698)  
198 overall.

199

200 There was an inverse relationship between sap consumption and minimum temperature  
201 during each sap season, though the strength of the relationship between consumption and  
202 minimum temperature varied by season, from weakest during the 2013-2014 season (slope = -  
203 6.97) to strongest during the 2015-2016 season (slope = -24.08) (Fig 2A). Though consumption  
204 is lowest at the margins of the sap season (November and April), there were relatively high  
205 levels of consumption during the November, March, and April of the 2013-2014 season as  
206 compared to the 2014 -2015 and 2015-2016 sap seasons (S2 Fig).

207

208 To account for the possibility that the relationship between monthly percentages of  
209 household sap consumption and minimum temperatures by location was impacted by the high  
210 late-fall and spring temperatures in the November and April of the sap season, we further  
211 examined the relationship after limiting the analysis to December-March (Fig 2B).

212

213 Sap consumption remained negatively correlated with average minimum temperatures  
214 during each sap season of the study period (slopes -1.98, -11.56, and -8.99, respectively), even  
215 after restricting to the coldest months with the most sap consumption.

216

217 The relationship between average monthly minimum temperatures and monthly  
218 percentages of household sap consumption was largely similar across all administrative divisions  
219 (Fig 3), exhibiting a consistent inverse relationship between sap consumption and monthly  
220 averages of daily minimum temperatures. However, districts with low overall average sap  
221 consumption, particularly Rangpur (3%), Chittagong (4%), and Sylhet (2%), did not demonstrate  
222 this association to the extent that districts with greater sap consumption did.

223

224 The peak time for sap consumption varied by location over the study period (Fig 3C).  
225 The peak occurred in January for Barisal (13%), Chittagong (8%), and Khulna (41%), while the  
226 peak of the season was in February for Dhaka (16%), Rajshahi (31%), Rangpur (7%), and Sylhet  
227 (9%). We found an inverse relationship between average monthly temperature and monthly  
228 proportion of sap consumption nearly each month of the sap season with the exclusion of April  
229 (Fig 3D).

230

231 We observed greater household sap consumption in the 2013-2014 sap season (Fig 4A),  
232 as well as colder monthly averages of daily minimum temperatures (Fig 4B) and lower monthly  
233 averages of daily cumulative precipitation (Fig 4C) in the 2013-2014 sap season. Further,  
234 minimum temperatures and sap consumption were related by season and location, with not only  
235 colder years in general but colder winters in a division being related with greater sap  
236 consumption in that division. No association was identified between household sap consumption  
237 and relative humidity or visibility (S3 Fig)

238

239 We found that moving averages of minimum temperature contributed significantly to  
240 explaining sap consumption ( $\chi^2(1, n=5,027) = 7.74, p < 0.01$ ), though categorical monthly  
241 averages did not ( $\chi^2 = 1.31, p = 0.252$ ). A similar observation was made for cumulative  
242 precipitation, though both the moving ( $\chi^2 = 5.15, p < 0.05$ ) and categorical ( $\chi^2 = 14.69, p <$   
243  $0.001$ ) averages improved model fit. Further, moving averages of cumulative precipitation  
244 contributed to model fit after accounting for the contributions of minimum temperature ( $\chi^2 =$   
245  $8.00, p < 0.01$ ), suggesting an independent association of each weather condition with sap  
246 consumption after accounting for the contributions of month, location, and sap season. Visibility  
247 or relative humidity was not found to be associated with household date palm sap consumption  
248 (S1 Table).

249

250 Comparing ROC curves for season and weather variables (S4 Fig), we found that there  
251 was no significant difference between the AUC when using only season (0.790) or only weather  
252 (0.786) as classifiers alongside month and location ( $Z = 0.562, p = 0.574, 95\% \text{ CI: } -0.011-$   
253  $0.0200$ ). Examining the covariates of season and weather in model selection using AICc, the

254 categorical variable of season provided better fit than moving averages of minimum temperature  
255 and precipitation, but the best fit was observed when including both season and weather (S2  
256 Table and S4 Fig).

257

258

## 259 **Discussion**

260

261 A study of human sap consumption during 2013-2016 in Bangladesh reported that  
262 consumption decreased across the study period and proposed multiple possible reasons for this  
263 decrease, including regional public health interventions advocating against sap consumption that  
264 were ongoing during the study period [15]. However, previous evidence highlighting the impacts  
265 of decreased temperature and precipitation on Nipah virus spillover [8,9, 14] and evidence  
266 suggesting both empiric and anecdotal support for the impacts of weather on date palm sap  
267 production [12, 13] support a proposed causal relationship between weather variation and sap  
268 consumption. We observed that household date palm sap consumption increased during colder,  
269 drier winters, and that relationship was largely generalizable across all months of the sap season  
270 and each administrative division in Bangladesh. Further, colder temperatures and less  
271 precipitation were associated with greater sap consumption even after accounting for sap season.  
272 Thus, we concur with the observation in Shanta et al. [15] that the reported decreases in sap  
273 consumption might be better explained by weather patterns during 2013-2016 rather than  
274 previous interventions. These findings indicate that weather-driven variability in sap  
275 consumption may be one of the major contributors to year-to-year variation in Nipah virus  
276 spillover.

277

278           Though identifying the association between winter weather patterns and sap consumption  
279 is useful in understanding interannual variability in Nipah virus spillover, the causal mechanisms  
280 of the association are still poorly understood. The effects of temperature and precipitation on the  
281 quantity or quality of sap produced by date palms remains unclear. It is possible that humans  
282 consume more sap during colder winters because the trees produce more sap during colder days,  
283 resulting in more opportunities for human consumption. Qualitative evidence from observers,  
284 historical records, and interviews with sap harvesters suggest that sap quality and volume may be  
285 highest on the coldest nights of the winter sap season [1, 12, 13]. Dilution of the sap from rain  
286 may visually impact the quality of the sap, reducing the likelihood that an individual would  
287 purchase it for consumption. Future studies into the effects of weather on date palm sap  
288 production quantity and quality could clarify the mechanisms that underlie the association  
289 between weather and date palm sap consumption. Additionally, as we do not have data on  
290 attitudes towards date palm sap consumption during the study period and thus cannot rule out the  
291 impact of education sap consumption interventions, future studies should take into account the  
292 motivating factors in the purchase of date palm sap beyond the quality of the sap itself.

293

294           Despite these unknowns, however, synthesizing previous evidence and identifying gaps  
295 in knowledge to confidently identify the behavioral and ecological processes between bat hosts,  
296 date palm trees, weather conditions, and human populations that drive Nipah seasonality  
297 exemplifies the benefit of an interdisciplinary approach to zoonotic disease. Utilizing approaches  
298 from ecology, virology, epidemiology, and anthropology, we can provide a uniquely broad view  
299 of a seasonal zoonotic disease system. Despite the challenge of understanding the numerous

300 factors underlying zoonotic disease spillover, this approach may serve as a model for  
301 investigating the underlying interactions that determine seasonal variability in spillover events  
302 for other zoonotic pathogens.

303

304

## 305 **References**

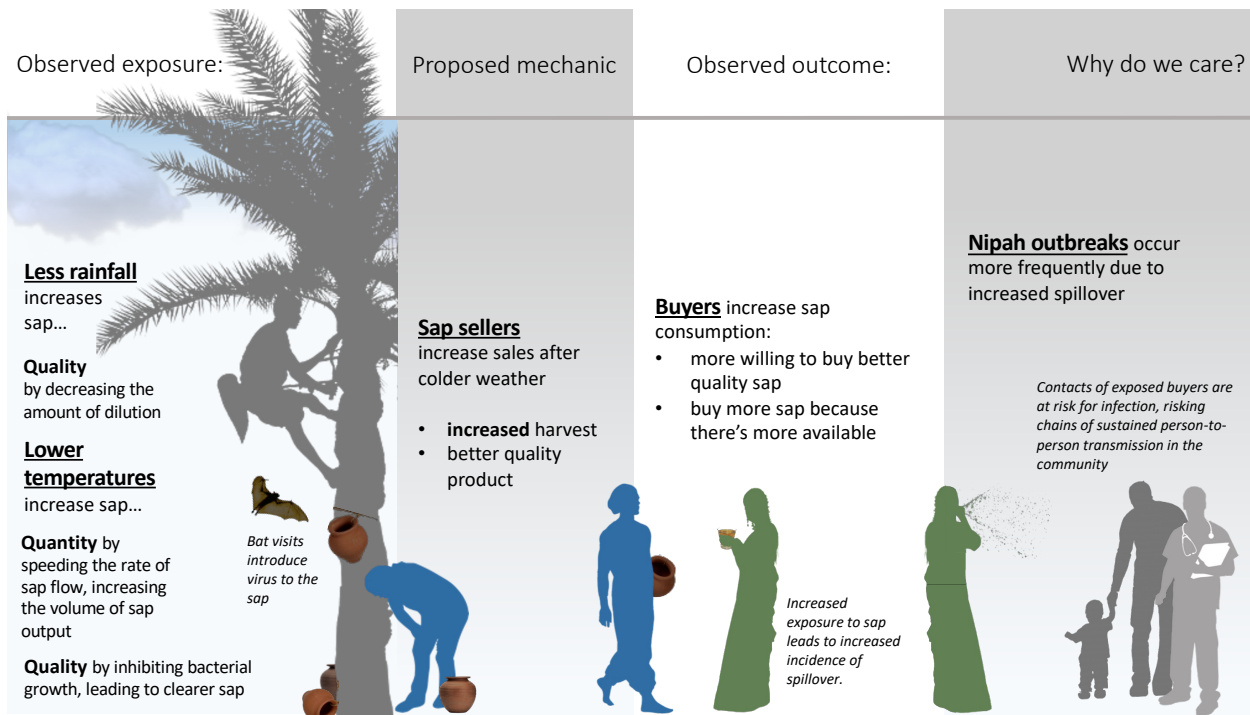
306

- 307 1. Kamaluddin M, Nath TK, Jashimuddin M. Indigenous practice of Khejur palm (*Phoenix*  
308 *sylvestris*) husbandry in rural Bangladesh. *Journal of Tropical Forest Science*  
309 1998;10:357–66.
- 310 2. Luby SP, Rahman M, Hossain M, Blum LS, Husain MM, Gurley ES, et al. Foodborne  
311 Transmission of Nipah Virus, Bangladesh. *Emerg Infect Dis.* 2006;12(12):1888-1894.  
312 doi: 10.3201/eid1212.060732.
- 313 3. Rahman MA, Hossain MJ, Sultana S, Homaira N, Khan SU, Rahman M, et al. Date Palm  
314 Sap Linked to Nipah Virus Outbreak in Bangladesh, 2008. *Vector-Borne and Zoonotic*  
315 *Diseases* 2012;12:65–72. doi: 10.1089/vbz.2011.0656.
- 316 4. Hegde ST, Sazzad HMS, Hossain MJ, Alam M-U, Kenah E, Daszak P, et al.  
317 Investigating Rare Risk Factors for Nipah Virus in Bangladesh: 2001–2012. *EcoHealth*  
318 2016;13:720–8. doi: 10.1007/s10393-016-1166-0.
- 319 5. Luby SP. The pandemic potential of Nipah virus. *Antiviral Research.* 2013 Oct  
320 1;100(1):38–43.

- 321 6. Nikolay B, Salje H, Hossain MJ, Khan AKMD, Sazzad HMS, Rahman M, et al.  
322 Transmission of Nipah Virus — 14 Years of Investigations in Bangladesh. *New England*  
323 *Journal of Medicine* 2019;380:1804–14. doi: 10.1056/NEJMoa1805376.
- 324 7. Khan, SUM, Hossain J, Gurley ES, Nahar N, Sultana R, Luby SP. Use of Infrared  
325 Camera to Understand Bats’ Access to Date Palm Sap: Implications for Preventing Nipah  
326 Virus Transmission. *EcoHealth* 2010;7:517–25. doi: 10.1007/s10393-010-0366-2.
- 327 8. McKee CD, Islam A, Luby SP, Salje H, Hudson PJ, Plowright RK, et al. The Ecology of  
328 Nipah Virus in Bangladesh: A Nexus of Land-Use Change and Opportunistic Feeding  
329 Behavior in Bats. *Viruses* 2021;13:169. doi: 10.3390/v13020169.
- 330 9. Cortes MC, Cauchemez S, Lefrancq N, Luby SP, Jahangir Hossain M, Sazzad HMS, et  
331 al. Characterization of the Spatial and Temporal Distribution of Nipah Virus Spillover  
332 Events in Bangladesh, 2007–2013. *J Infect Dis* 2018;217:1390–4. doi:  
333 10.1093/infdis/jiy015.
- 334 10. Fogarty R, Halpin K, Hyatt AD, Daszak P, Mungall BA. Henipavirus susceptibility to  
335 environmental variables. *Virus Res* 2008;132:140–4. doi: 10.1016/j.virusres.2007.11.010.
- 336 11. Islam A, McKee C, Ghosh PK, Abedin J, Epstein JH, Daszak P, et al. Seasonality of Date  
337 Palm Sap Feeding Behavior by Bats in Bangladesh. *EcoHealth* 2021;18:359–71. doi:  
338 10.1007/s10393-021-01561-9.
- 339 12. Nahar N, Sultana R, Gurley ES, Hossain MJ, Luby SP. Date Palm Sap Collection:  
340 Exploring Opportunities to Prevent Nipah Transmission. *EcoHealth* 2010;7:196–203. doi:  
341 10.1007/s10393-010-0320-3.

- 342 13. Annett HE, Amin BM, Lele GK. The date sugar industry in Bengal : an investigation into  
343 its chemistry and agriculture. Calcutta: Published for the Imperial Dept. of Agriculture in  
344 India by Thacker, Spink & Co; 1913. doi: 10.5962/bhl.title.27998.
- 345 14. Latinne A, Morand S. Climate Anomalies and Spillover of Bat-Borne Viral Diseases in  
346 the Asia–Pacific Region and the Arabian Peninsula. *Viruses* 2022;14:1100. doi:  
347 10.3390/v14051100.
- 348 15. Shanta IS, Luby SP, Hossain K, Heffelfinger JD, Kilpatrick AM, Haider N, Rahman T,  
349 Chakma S, Ahmed SSU, Sharkar Y, Pulliam JRC, Kennedy ED, Gurley ES. Human  
350 Exposure to Bats, Rodents and Monkeys in Bangladesh. *Ecohealth*. 2023 Mar;20(1):53-  
351 64. doi: 10.1007/s10393-023-01628-9.
- 352 16. R Core Team (2021). R: A language and environment for statistical computing. R  
353 Foundation for Statistical Computing, Vienna, Austria. <https://www.R-project.org/>.  
354  
355  
356  
357  
358  
359  
360  
361  
362  
363  
364





365

366

367 **Fig 1. Proposed Mechanics of Weather-Spillover Relationship.** Proposed relationships

368 between winter temperatures, precipitation, seasonal sap production, sap consumption, and

369 Nipah virus spillover risk.

370

371

372

373

374

375

376

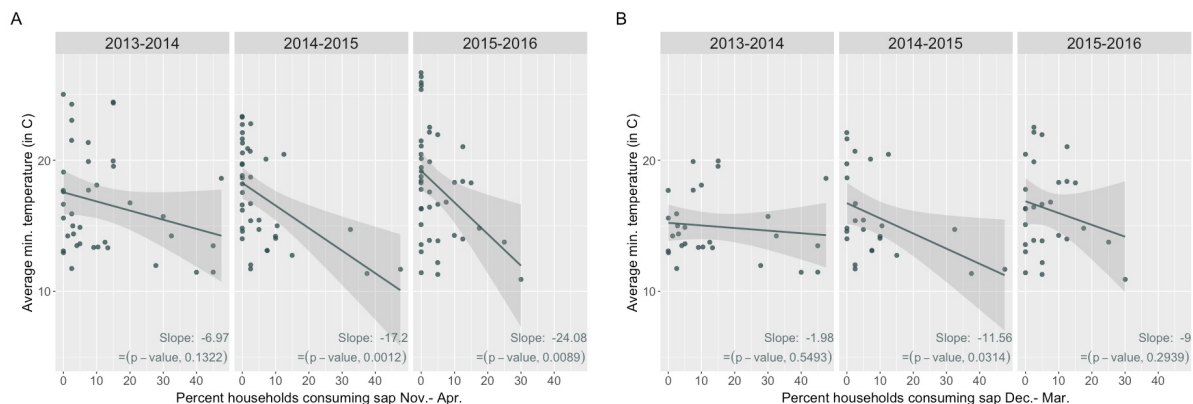
377

378

379 **Table 1.** Geographic and temporal characteristics of date palm sap consumption during the sap  
 380 consumption season (Nov.-Apr.) in 10,002 households in 1,001 communities across Bangladesh,  
 381 2013-2016.  
 382

Response characteristic	Households reporting date palm sap consumption in the past month	
	%	(n/N)
<b>Season</b>		
2013-2014	12	(193/1675)
2014-2015	6	(91/1670)
2015-2016	5	(77/1679)
<b>Month</b>		
November	1	(3/583)
December	5	(50/1075)
January	15	(124/857)
February	15	(102/698)
March	7	(62/881)
April	2	(20/930)
<b>Location</b>		
Barisal	5	(38/720)
Chittagong	4	(30/720)
Dhaka	5	(39/718)
Khulna	18	(126/717)
Rajshahi	13	(96/720)
Rangpur	3	(21/719)
Sylhet	2	(11/710)
<b>Total:</b>	<b>7</b>	<b>(361/5024)</b>

383  
 384  
 385  
 386  
 387  
 388  
 389



390  
391 **Fig 2. Sap consumption and minimum temperature by season.** (A) Monthly percentages of  
392 household sap consumption and monthly average of daily minimum temperatures by location  
393 over sap seasons, Nov.-Apr. (B) Monthly percentages of household sap consumption and  
394 monthly average of daily minimum temperatures by location over a subset of months within the  
395 sap season, Dec.-Mar.

396

397

398

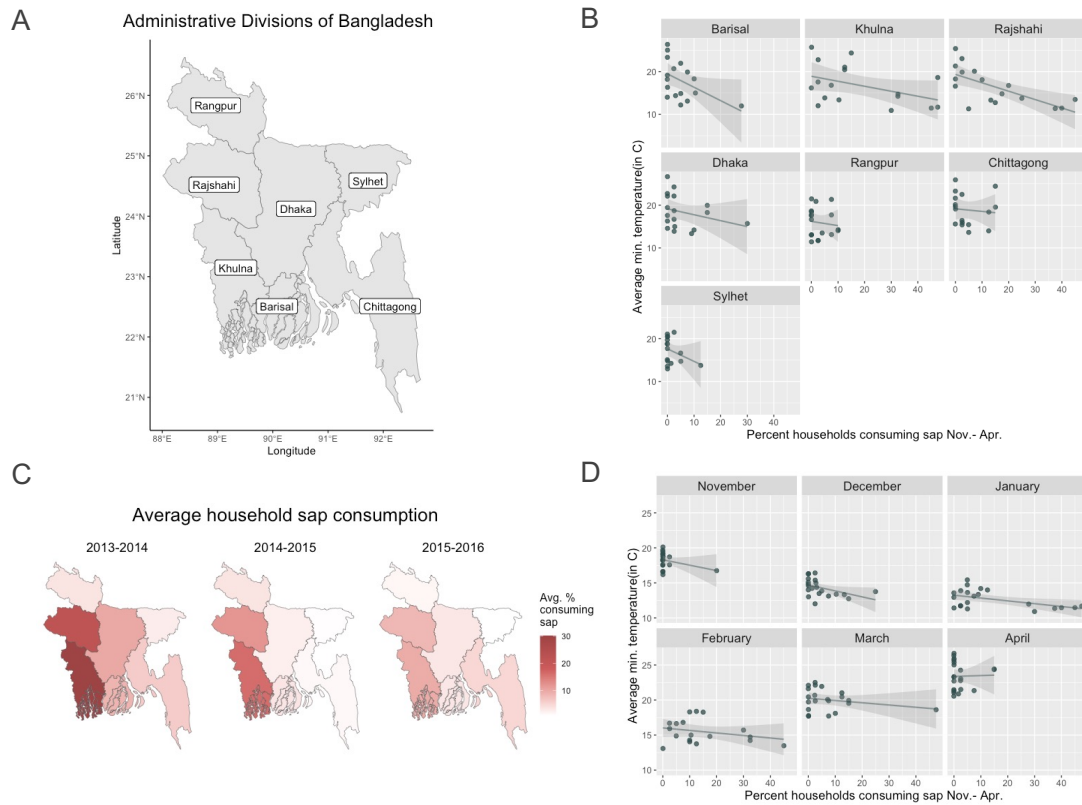
399

400

401

402

403



404

405

406 **Fig 3. Sap consumption and minimum temperature by month and location.** (A) Map of  
407 administrative divisions of Bangladesh, (B) Monthly percentages of household sap consumption  
408 and monthly average of daily minimum temperatures by location over all sap seasons of the  
409 study period, Nov.-Apr. 2013-2016. (C) Average percentages of household sap consumption  
410 across sap seasons in each division and (D) Average percentages of household sap consumption  
411 and minimum temperatures in each division by month across all sap seasons.

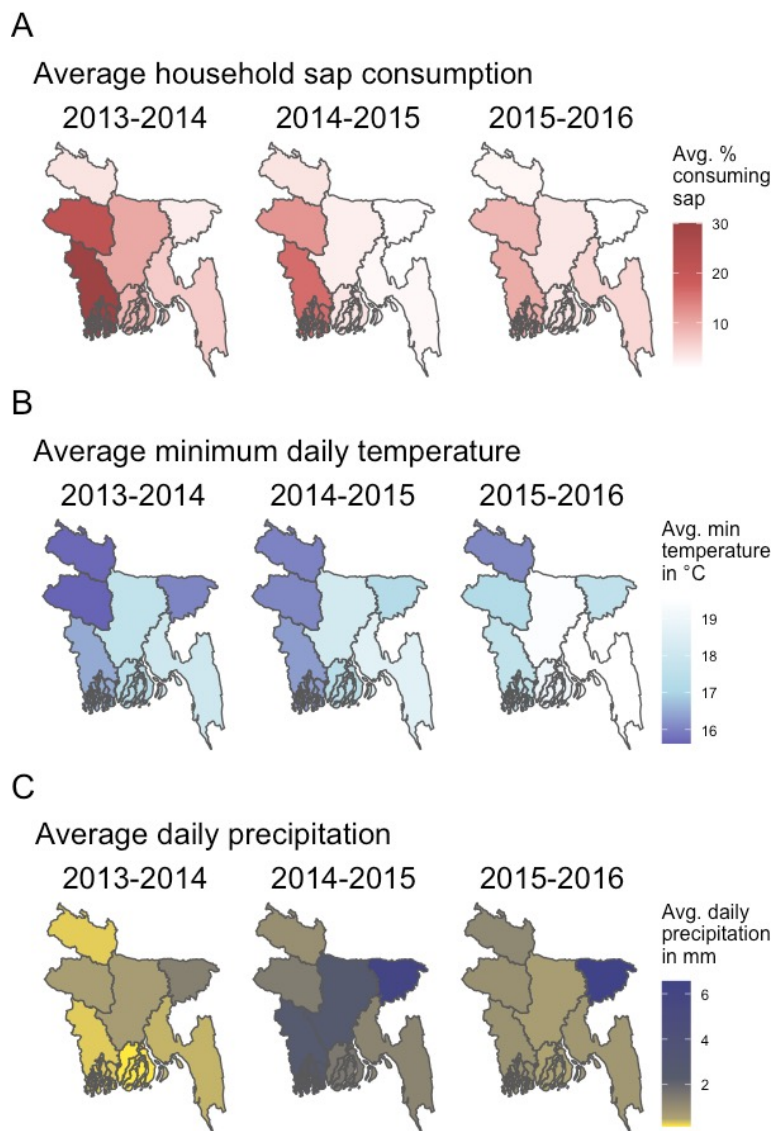
412

413

414

415

416



417

418 **Fig 4. Sap consumption and weather by location and season.** Relationship between date palm

419 sap consumption and weather in Bangladesh, November-April, 2013-2016. (A) Average

420 percentages of household sap consumption over sap seasons by division (B) Average of all daily

421 minimum temperatures in °C over sap seasons by division (C) Average of all daily values of

422 cumulative precipitation in millimeters over sap seasons by division.

423

424