

1

2

3 **Main title: *The causal correlation between gastroesophageal reflux disease and***
4 ***chronic widespread pain: a bidirectional mendelian randomization study***

5

6 **Short title: *gastroesophageal reflux disease and chronic widespread pain***

7

8

9 Menglin Chen^{1,2}, Houshu Tu^{1,2}, Jiaoli Zhou^{1,2}, Yi Zhang^{1,2}, Shuting Wen^{1,2}, Yao
10 Xiao^{1,2}, Ling He^{1,2*}

11

12

13 ¹ Jiangxi University of Traditional Chinese Medicine, Nanchang, China

14 ² Gastroenterology Department, Affiliated Hospital of Jiangxi University of
15 Traditional Chinese Medicine Nanchang, China

16

17

18 * Corresponding author

19 E-mail: heling118@126.com (LH)

20

21

22

23 **Abstract**

24 Background: Previous observational research found a relationship between
25 gastroesophageal reflux disease (GERD) and chronic widespread pain (CWP). Despite
26 this, it is unknown which, if any, of the conditions produces the other. Our study will
27 use bidirectional Mendelian randomization (MR) to evaluate their causal link.

28 Methods: We examined two sets of publically accessible data from genome-wide
29 association studies (GWAS): GERD (129,080 cases and 602,604 controls) and CWP
30 (6,914 cases and 242,929 controls). We used the inverse variance weighting (IVW)
31 approach as the major analysis method, but we also ran weighted median and MR-
32 Egger regression analyses. We performed various sensitivity studies to assess the
33 conclusions' consistency, horizontal pleiotropy, and stability.

34 Results: MR analysis showed that CWP increased the risk of developing GERD
35 [$N_{\text{SNP}} = 4$, odds ratio (OR): 245.244; 95% confidence interval (CI): 4.35E+00,1.38E+04;
36 $p = 0.007 < 0.05$] and vice versa ($N_{\text{SNP}} = 28$; OR:1.019; 95% CI: 1.009-1.029; $p = 0.029$
37 < 0.05). Bidirectional evidence of causality existed. The sensitivity analysis
38 demonstrated the robustness and reliability of the findings.

39 Conclusions: Our study demonstrated a bidirectional causal relationship between
40 GERD and chronic widespread pain, and future interventions for CWP may be an
41 effective strategy for preventing or mitigating GERD and vice versa.

42
43 Keywords: Mendelian randomization; bidirectional; Causal; gastroesophageal reflux
44 disease; chronic widespread pain; fibromyalgia

45 **Introduction**

46 Gastroesophageal reflux disease (GERD), which causes heartburn and
47 regurgitation, is a prevalent chronic gastrointestinal condition (1). It impacts up to 20%
48 of the population in the West, and its incidence is rising globally as the world's
49 population grows and ages (2, 3), posing a major public health concern.

50 Chronic widespread pain (CWP) is clinically defined as musculoskeletal
51 discomfort with a diffuse pattern that lasts three months or more (4). It is one of the
52 characteristic symptoms of fibromyalgia (FM) condition, involving 10.6% to 11.8% of
53 the general population (5). Meanwhile, strong research indicates that patients who
54 suffer from CWP have an increased chance of mortality (6). This emphasizes the
55 importance of proactive risk-reduction s initiatives, as well as early prevention and
56 treatment for illness. Prioritizing early detection, diagnosis, and management of CWP
57 is critical for improving patients' overall health outcomes.

58 It is commonly acknowledged that the term FM is the most precise approach to
59 characterize CWP after all other plausible explanations have been ruled out (4).
60 Retrospective research discovered that patients with FM commonly have GERD as a
61 secondary disorder (7). Meanwhile, previous cross-sectional research discovered a
62 positive link between FM and GERD (8), signaling that persons with CWP may be
63 more likely to acquire GERD. Currently, research suggests that CWP is linked to a
64 variety of illnesses, including anxiety, depression, sleep difficulties, and migraine
65 headaches (9). However, there is no clear evidence that CWP causes GERD. Mendelian
66 randomization (MR) is a great approach for researchers who want to avoid confounding

67 biases and causal inversion (10, 11). To ensure the validity and reliability of its results,
68 it uses genetic variants, namely single nucleotide polymorphisms, or SNPs, as
69 instrumental variants (IVs) (12).

70 The aim of the research is to evaluate the causal relationship between GERD and
71 CWP via a two-sample bidirectional MR analysis (MRA) method, which will provide
72 some basis for etiology and treatment.

73 **Methods**

74 The present study exploited genetic information from an extensive publicly
75 accessible database of genome-wide association studies (GWAS), which required no
76 further ethical approval.

77 **Research design**

78 This study employed two-sample MRA to determine the causal link between CWP
79 and GERD. This study tested the following primary hypotheses (13): (1) SNPs were
80 significantly related with exposure. (2) The SNPs showed no correlation with putative
81 confounders of the CWP-GERD relationship. (3) SNPs altered the result solely by
82 connection with the exposure. This work was designed and written in accordance with
83 the STROBE-MR reporting criteria (14). Fig 1 displays the general process chart.

84 **Fig 1. The general process chart of the MR study**

85 **Data sources**

86 A large-scale GWAS comprising 473,524 controls and 129,080 patients provided
87 the GERD data (15). The CWP data, on the other hand, came from a GWAS
88 investigation at the UK Biobank that included 6914 cases and 242,929 controls (16).
89 The patients were categorized based on the self-identified diagnosis of fibromyalgia
90 and/or the presence of more than three months' worth of knee, arm, hip, spine, or
91 generalized discomfort. Exclusion criteria included people with systemic lupus
92 erythematosus, ankylosing spondylitis, arthritis of the joints, rheumatic polymyalgia,
93 and myopathy.

94 It is important to emphasize that there was no sample duplication between the two
95 research groups and that every participant was of European heritage, reducing the
96 possibility of ethnic bias. The study met with ethical standards and legal requirements
97 and used data that was already publicly available. As a result, no further ethical
98 assessment or clearance was needed.

99 **Screening of SNPs**

100 In accordance with the MR hypothesis criterion, an SNP correlation screen was
101 carried out. Using CWP as an exposure factor, we had to modify the genome-wide
102 relevance criterion ($p < 5 \times 10^{-6}$) to acquire more meaningful SNPs (17). For the purpose
103 of the reverse MR analysis with GERD as a trigger factor, we only included SNPs with
104 a significant connection and genome-wide significance level ($p < 5 \times 10^{-8}$). To reduce
105 the impact of severe linkage disequilibrium, we employed tight selection criteria for

106 SNPs, such as $R^2 = 0.001$, with a genetic frame of 10,000 kb in the European 1000
107 Chromosome standard panel (18). We utilized PhenoScanner V2
108 (<http://www.phenoscanter.medschl.cam.ac.uk>) to determine whether the SNPs
109 employed were associated with important potential confounding factors (19), and if so,
110 excluded them. We evaluated the statistical significance of each SNP using the F -value
111 ($F = \beta^2/SE^2$), where β describes the allele effect value and SE denotes the standard error.
112 Excluded SNPs having F -value < 10 (20). Finally, we identified genuine SNPs that are
113 substantially related with GERD or CWP.

114 **Sensitivity analyses**

115 The Cochran's Q test allowed us to determine the presence of heterogeneity among
116 those risk factors. A p -value ≥ 0.05 suggests a low chance of heterogeneity (21). To
117 see if other factors were influencing the outcomes, we employed the MR Egger's
118 intercept test (22). The occurrence of substantial disparities highlighted the necessity to
119 explore other variables. To locate any outliers that might affect the results, the MR
120 pleiotropy residual sum and outlier (MR-PRESSO) test was applied (23).

121 We reanalyzed the data after subtracting the outliers to eliminate any other factors
122 that could have biased the results. To ascertain the impact of genetic variation, we also
123 implemented a leave-one-out sensitivity analysis (24).

124 **MR analysis**

125 Inverse variance weighted (IVW) analysis was the main statistical method used in

126 this work (24). In parallel, stability analyses and findings validations were carried out
127 using the weighted median and MR-Egger regression models (22, 25). The study
128 yielded odds ratios (OR) and 95% confidence intervals (95% CI) for the MR results.

129 **Statistical methods**

130 Version 5.1.0 of the R software (26) 's "TwoSample MR" package was used for
131 all statistical studies. $p < 0.05$ was used for demonstrating statistical significance.

132 **Results**

133 **Genetic instrumental variables**

134 Following a rigorous surveillance, we narrowed our selection to 7 separate SNPs
135 for GERD and 28 SNPs for CWP. To do this, we eliminated chain imbalances and
136 associated confounders, with smoking being recognized as a risk factor for GERD and
137 smoking, obesity, mental illness, cancer, and osteoarthritis as risk factors for CWP (27-
138 29). Furthermore, SNPs that did not appear in the endpoint GWAS were deleted.
139 Following this, it came to light that all SNPs had F statistics > 10 , demonstrating that
140 the causal conclusions obtained in our investigation can be understood without taking
141 into account weak SNPs. S1 Table summarizes our findings and offers a detailed
142 overview of the combined information from the identified SNPs.

143 **Causal effect of CWP on the risk of GERD**

144 To determine the robustness of the causal link between GERD and CWP, a

145 sensitivity analysis was performed. Heterogeneity among SNPs was demonstrated by
146 the Cochran's Q p -values in MR-Egger ($Q = 38.443, p < 0.001$) and IVW (Fig 2, $Q =$
147 $40.197, p < 0.001$). As an outlier, rs1491985 was removed based on the initial MR
148 PRESSO result (Table 1, $p = 0.0001 < 0.05$). rs923593 and rs7541613 were eliminated
149 as well since the second MR PRESSO result suggested they might be potential outliers
150 (Table 1, $p = 0.018 < 0.05$). There were no outliers in the third MR PRESSO data (Table
151 1, $p = 0.076 > 0.05$). For the final MR analysis, 4 SNPs were chosen based on the
152 analysis above. Even with the continuous heterogeneity [MR-Egger ($Q=10.116, p =$
153 0.006) and IVW (Fig 2, $Q=12.035, p = 0.007$)], the accuracy of the MR results would
154 remain unaffected using the random-effects IVW model. This study did not exhibit
155 pleiotropy, according to the MR-Egger intercept test (Fig 2, $p = 0.601$). Additionally, a
156 leave-one-out analysis was carried out, eliminating SNPs one at a time, and it was
157 shown that no SNP had a statistically significant impact on the entire results (Fig 3A).

158 **Fig 2. Results of sensitivity analysis** (CWP': SNPs of CWP used in the first Mendelian
159 analysis; CWP'': SNPs for CWP used in the second Mendelian analysis, CWP: SNPs
160 for CWP used in Mendelian analysis after removing all outliers.)

161 **Table 1 Results of MR analysis**

162 **Fig 3. Results of MR analysis** (A-Scatter plots of estimates for the association of
163 GERD on CWP; B- Leave-one-out results for GERD on CWP; C-Scatter plots of
164 estimates for the association of CWP on GERD; D- Leave-one-out results for CWP on
165 GERD)

166 The results of IVW showed that the genetically predicted prevalent population

167 would have a significantly increased risk of GERD compared to those without CWP
168 ($N_{\text{SNP}} = 4$, OR: 245.244; 95% CI: 4.35E+00, 1.38E+04; $p = 0.007 < 0.05$) (Table 1). The
169 result of the weighted median method also corroborated the trend observed in the IVW
170 analysis. Nevertheless, the MR-Egger results weren't compatible with the IVW
171 direction. The two methods did not yield statistically significant results (Table 1).

172 To determine how the outliers affected the final MR results, MR analysis was also
173 done for each SNP before the outliers were eliminated. The IVW results demonstrated
174 that the MR data support the function of CWP in raising the chance of suffering from
175 GERD, even with outliers (S2 Table, S1 Fig). These findings indicate that CWP patients
176 is a causal risk factor for GERD.

177 **Causal effects of GERD on the risk of CWP**

178 Similarly, sensitivity studies were carried out to determine the strength of the
179 causal link between GERD and CWP. There was no indication of possible directed
180 pleiotropy according to the results of the MR-Egger intercept test (Fig 2, $p = 0.162$) or
181 MR PRESSO findings. The Cochran's Q p-values in the IVW (Figure 2, $Q = 27.171$, p
182 $= 0.400$) and MR-Egger ($Q = 29.339$, $p = 0.345$) approaches indicated a low chance of
183 heterogeneity. MR PRESSO was performed, and there were no significant outliers (Fig
184 2, $p = 0.41$), indicating that the MR data were credible. Furthermore, leave-one-out
185 analysis revealed no significant differences in the associations found when any one SNP
186 was deleted (Fig 3C).

187 Our results offer strong evidence that GERD and CWP are causally related. The

188 study discovered that people with GERD have a greater chance of having CWP (N_{SNP}
189 = 28; OR:1.019; 95% CI: 1.009-1.029; $p = 0.029 < 0.05$) (Table 1). The weighted
190 median technique confirms the trend found in the IVW analysis ($N_{\text{SNP}} = 28$; OR: 1.018;
191 95% CI: 1.004-1.033; $p = 0.013 < 0.05$) (Table 1). Nonetheless, the MR-Egger results
192 did not match the IVW orientation (Fig 3D).

193 **Discussion**

194 Our findings provide solid proof that GERD and CWP are causally connected.
195 Individuals with a genetic predisposition to GERD may be at a higher risk for CWP.
196 Those with CWP have a higher chance of acquiring GERD. We verified these findings
197 with a sensitivity analysis, confirming causality between these two diseases. Several
198 hypotheses try to explain the link between CWP and GERD. The potential causes
199 include psychosocial variables as well as brain-gut interactions.

200 Psychosocial factors such as negative childhood memories, catastrophic life events,
201 and interpersonal disputes all have a substantial impact on the onset, severity, and
202 susceptibility of CWP (30). Prolonged psychological discomfort can lead to CWP in
203 persons with psychological illnesses such as anxiety and depression (31). Gastric reflux
204 into the throat can be caused by mood disorders by psychological stress that restricts
205 the lower part of the sphincter. Furthermore, it can increase the gastrointestinal tract's
206 sensitivity to stomach acid (32). Additionally, numerous stressful situations and
207 psychiatric illnesses might exacerbate the symptoms of GERD (33).

208 The gut-brain axis and the hypothalamic-pituitary-adrenal (HPA) axis are
209 hypothesized to play roles in the pathophysiology of certain disorders. When the brain
210 detects stress, the HPA axis is engaged, and the hypothalamus produces corticotropin-
211 releasing factor (CRF), which is found in both the brain and the gut (8). Overproduction
212 of CRF can impair intestinal motility, causing greater pain and visceral sensitivity.
213 Stressful life events can permanently overproduce CRF and affect the sympathetic and
214 HPA axes (34, 35). The gut-brain axis is regulated bidirectionally. The central nervous
215 system (CNS) can control intestinal pain symptoms and reduce hypersensitivity. The
216 gut flora can interact with the CNS via influencing the levels of gut neurotransmitters
217 and cytokines, either directly or indirectly. The association between FM and gut
218 bacteria has been proven, with *Coprococcus2*, *Eggerthella*, and *Lactobacillus* being
219 reported to increase the risk of FM (36).

220 Risk factors for GERD and CWP may be similar, including depression, smoking,
221 and sleep disturbances (29, 37). To prevent inclusion bias from observational studies
222 that neglect to omit mutual factors, relevant confounders were eliminated before to the
223 two-sample MR analysis in the current investigation, and GERD and CWP were
224 included as distinct outcomes. The degree of evidence from observational studies and
225 the superiority of MR analysis (38) meant that confounders had less of an impact on
226 the current study's conclusions. Despite the fact that there is heterogeneity among the
227 instrumental factors for positive MR, IVW's random effects model ensures that the
228 results are reliable despite the heterogeneity.

229 Although the screening thresholds were relaxed, only a small number of genome-

230 wide significant SNPs were found in the CWP GWAS, which may explain the large
231 variability in point estimates across MR methods. This could account for the
232 considerable variation in point estimates amongst MR techniques (39). Furthermore,
233 fibromyalgia and/or chronic localized musculoskeletal pain are included in the broad
234 diagnosis of CWP. Inaccurate definitions have the potential to add confounding
235 variables to unprocessed GWAS data, decreasing their statistical power. Integrating the
236 distinct GERD and CWP phenotypes is a crucial topic of investigation for subsequent
237 investigations. On the one hand, since the research solely employed GWAS data from
238 European groups, it avoids the influence of other populations. It does, however, restricts
239 how broadly the findings may be extended to various populations.

240 In the future, more research with datasets from different populations will be
241 needed. Ultimately, this study deduced the genetic basis of the causal association
242 between GERD and CWP. Nevertheless, the underlying biological mechanisms remain
243 incompletely understood, and further studies are essential to validate this assertion in
244 the future.

245 **Conclusion**

246 Our findings indicate that GERD and CWP have a bidirectional causal connection,
247 meaning that having one illness raises the chance of getting the other. These findings
248 support earlier studies and point to the necessity of treatments that can deal with both
249 diseases simultaneously.

250 **Acknowledgments**

251 Every author—MC, HT, JZ, YZ, SW, YX, and LH—contributed significantly to
252 the study's execution. Their main contributions are as follows: (1) they planned and
253 created the research; (2) they drafted and edited the article; and (3) they submitted the
254 final manuscript for approval. They also collected, analyzed, and interpreted data.
255 Simultaneously, MC assumed control of the entire study procedure.

256 We appreciate the investigators and subjects of the initial MR investigation. We
257 acknowledge the provision of this data by IEU GWAS and the UK Biobank. Author
258 contributions

259

260 **References**

- 261 1. Maret-Ouda J, Markar SR, Lagergren J. Gastroesophageal Reflux Disease.
262 *Jama*. 2020;324(24):2565.
- 263 2. Ustaoglu A, Nguyen A, Spechler S, Sifrim D, Souza R, Woodland P. Mucosal
264 pathogenesis in gastro-esophageal reflux disease. *Neurogastroenterol Motil*.
265 2020;32(12):e14022.
- 266 3. M Ashworth Dirac, Saeid Safiri, Derrick Tsoi, Rufus Adesoji Adedoyin,
267 Ashkan Afshin, Narjes Akhlaghi, et al. The global, regional, and national
268 burden of gastro-oesophageal reflux disease in 195 countries and territories,
269 1990-2017: a systematic analysis for the Global Burden of Disease Study
270 2017. *Lancet Gastroenterol Hepatol*. 2020;5(6):561-81.

- 271 4. Butler S, Landmark T, Glette M, Borchgrevink P, Woodhouse A. Chronic
272 widespread pain-the need for a standard definition. *Pain*. 2016;157(3):541-3.
- 273 5. Mansfield KE, Sim J, Jordan JL, Jordan KP. A systematic review and meta-
274 analysis of the prevalence of chronic widespread pain in the general
275 population. *Pain*. 2016;157(1):55-64.
- 276 6. Da Silva JAP, Geenen R, Jacobs JWG. Chronic widespread pain and
277 increased mortality: biopsychosocial interconnections. *Ann Rheum Dis*.
278 2018;77(6):790-2.
- 279 7. Rivera FA, Munipalli B, Allman ME, Hodge DO, Wieczorek MA, Wang B,
280 et al. A retrospective analysis of the prevalence and impact of associated
281 comorbidities on fibromyalgia outcomes in a tertiary care center. *Front Med*
282 (Lausanne). 2023;10:1301944.
- 283 8. Savin E, Tsur AM, Watad A, Gendelman O, Kopylov U, Cohen AD, et al.
284 Association of fibromyalgia with cancerous and non-cancerous
285 gastrointestinal comorbidities: a cross-sectional study. *Clin Exp Rheumatol*.
286 2023;41(6):1248-53.
- 287 9. Geneen LJ, Moore RA, Clarke C, Martin D, Colvin LA, Smith BH. Physical
288 activity and exercise for chronic pain in adults: an overview of Cochrane
289 Reviews. *Cochrane Database Syst Rev*. 2017;4(4):Cd011279.
- 290 10. Lawlor DA, Harbord RM, Sterne JA, Timpson N, Davey Smith G. Mendelian
291 randomization: using genes as instruments for making causal inferences in
292 epidemiology. *Stat Med*. 2008;27(8):1133-63.

- 293 11. Davey Smith G, Hemani G. Mendelian randomization: genetic anchors for
294 causal inference in epidemiological studies. *Hum Mol Genet.*
295 2014;23(R1):R89-98.
- 296 12. Freuer D, Linseisen J, Meisinger C. Association Between Inflammatory
297 Bowel Disease and Both Psoriasis and Psoriatic Arthritis: A Bidirectional 2-
298 Sample Mendelian Randomization Study. *JAMA Dermatol.*
299 2022;158(11):1262-8.
- 300 13. Sekula P, Del Greco MF, Pattaro C, Köttgen A. Mendelian Randomization as
301 an Approach to Assess Causality Using Observational Data. *J Am Soc*
302 *Nephrol.* 2016;27(11):3253-65.
- 303 14. Skrivankova VW, Richmond RC, Woolf BAR, Yarmolinsky J, Davies NM,
304 Swanson SA, et al. Strengthening the Reporting of Observational Studies in
305 Epidemiology Using Mendelian Randomization: The STROBE-MR
306 Statement. *Jama.* 2021;326(16):1614-21.
- 307 15. Ong JS, An J, Han X, Law MH, Nandakumar P, Schumacher J, et al. Multitrait
308 genetic association analysis identifies 50 new risk loci for gastro-oesophageal
309 reflux, seven new loci for Barrett's oesophagus and provides insights into
310 clinical heterogeneity in reflux diagnosis. *Gut.* 2022;71(6):1053-61.
- 311 16. Rahman MS, Winsvold BS, Chavez Chavez SO, Børte S, Tsepilov YA,
312 Sharapov SZ, et al. Genome-wide association study identifies RNF123 locus
313 as associated with chronic widespread musculoskeletal pain. *Ann Rheum Dis.*
314 2021;80(9):1227-35.

- 315 17. Zonneveld MH, Trompet S, Jukema JW, Noordam R. Exploring the possible
316 causal effects of cardiac blood biomarkers in dementia and cognitive
317 performance: a Mendelian randomization study. *Geroscience*.
318 2023;45(6):3165-74.
- 319 18. Yuan S, Larsson SC. Adiposity, diabetes, lifestyle factors and risk of
320 gastroesophageal reflux disease: a Mendelian randomization study. *Eur J*
321 *Epidemiol*. 2022;37(7):747-54.
- 322 19. Kamat MA, Blackshaw JA, Young R, Surendran P, Burgess S, Danesh J, et
323 al. PhenoScanner V2: an expanded tool for searching human genotype-
324 phenotype associations. *Bioinformatics*. 2019;35(22):4851-3.
- 325 20. de Klerk JA, Beulens JWJ, Mei H, Bijkerk R, van Zonneveld AJ, Koivula RW,
326 et al. Altered blood gene expression in the obesity-related type 2 diabetes
327 cluster may be causally involved in lipid metabolism: a Mendelian
328 randomisation study. *Diabetologia*. 2023;66(6):1057-70.
- 329 21. Greco MF, Minelli C, Sheehan NA, Thompson JR. Detecting pleiotropy in
330 Mendelian randomisation studies with summary data and a continuous
331 outcome. *Stat Med*. 2015;34(21):2926-40.
- 332 22. Bowden J, Davey Smith G, Burgess S. Mendelian randomization with invalid
333 instruments: effect estimation and bias detection through Egger regression. *Int*
334 *J Epidemiol*. 2015;44(2):512-25.
- 335 23. Verbanck M, Chen CY, Neale B, Do R. Publisher Correction: Detection of
336 widespread horizontal pleiotropy in causal relationships inferred from

- 337 Mendelian randomization between complex traits and diseases. *Nat Genet.*
338 2018;50(8):1196.
- 339 24. Reynolds CJ, Del Greco MF, Allen RJ, Flores C, Jenkins RG, Maher TM, et
340 al. The causal relationship between gastro-oesophageal reflux disease and
341 idiopathic pulmonary fibrosis: a bidirectional two-sample Mendelian
342 randomisation study. *Eur Respir J.* 2023;61(5).
- 343 25. Bowden J, Davey Smith G, Haycock PC, Burgess S. Consistent Estimation in
344 Mendelian Randomization with Some Invalid Instruments Using a Weighted
345 Median Estimator. *Genet Epidemiol.* 2016;40(4):304-14.
- 346 26. Hemani G, Zheng J, Elsworth B, Wade KH, Haberland V, Baird D, et al. The
347 MR-Base platform supports systematic causal inference across the human
348 phenome. *Elife.* 2018;7.
- 349 27. Larsson SC, Burgess S. Appraising the causal role of smoking in multiple
350 diseases: A systematic review and meta-analysis of Mendelian randomization
351 studies. *EBioMedicine.* 2022;82:104154.
- 352 28. Tang Y, Liu W, Kong W, Zhang S, Zhu T. Multisite chronic pain and the risk
353 of autoimmune diseases: A Mendelian randomization study. *Front Immunol.*
354 2023;14:1077088.
- 355 29. Mills SEE, Nicolson KP, Smith BH. Chronic pain: a review of its
356 epidemiology and associated factors in population-based studies. *Br J Anaesth.*
357 2019;123(2):e273-e83.
- 358 30. Häuser W, Jones G. Psychological therapies for chronic widespread pain and

- 359 fibromyalgia syndrome. *Best Pract Res Clin Rheumatol.* 2019;33(3):101416.
- 360 31. Santos DM, Lage LV, Jabur EK, Kaziyama HHS, Iosifescu DV, De Lucia
361 MCS, et al. The influence of depression on personality traits in patients with
362 fibromyalgia: a case-control study. *Clin Exp Rheumatol.* 2017;35 Suppl
363 105(3):13-9.
- 364 32. Song EM, Jung HK, Jung JM. The association between reflux esophagitis and
365 psychosocial stress. *Dig Dis Sci.* 2013;58(2):471-7.
- 366 33. Menezes MA, Herbella FAM. Pathophysiology of Gastroesophageal Reflux
367 Disease. *World J Surg.* 2017;41(7):1666-71.
- 368 34. Sun Y, Li L, Xie R, Wang B, Jiang K, Cao H. Stress Triggers Flare of
369 Inflammatory Bowel Disease in Children and Adults. *Front Pediatr.*
370 2019;7:432.
- 371 35. Mayer EA. The neurobiology of stress and gastrointestinal disease. *Gut.*
372 2000;47(6):861-9.
- 373 36. Wang Z, Jiang D, Zhang M, Teng Y, Huang Y. Causal association between
374 gut microbiota and fibromyalgia: a Mendelian randomization study. *Front*
375 *Microbiol.* 2023;14:1305361.
- 376 37. Bonanni E, Schirru A, Di Perri MC, Bonuccelli U, Maestri M. Insomnia and
377 hot flashes. *Maturitas.* 2019;126:51-4.
- 378 38. Zhou W, Cai J, Li Z, Lin Y. Association of atopic dermatitis with autoimmune
379 diseases: A bidirectional and multivariable two-sample mendelian
380 randomization study. *Front Immunol.* 2023;14:1132719.

381 39. Zhao SS, Holmes MV, Alam U. Disentangling the relationship between
382 depression and chronic widespread pain: A Mendelian randomisation study.
383 *Semin Arthritis Rheum.* 2023;60:152188.

384

385 **Supporting information**

386 **S1 Fig. Results of MR analysis before excluding outliers.**(A-Scatter plots of
387 estimates for the association of GERD on CWP'; B- Leave-one-out results for GERD
388 on CWP'; C- Funnel plots of estimates for the association of GERD on CWP';D- Scatter
389 plots of estimates for the association of GERD on CWP"; E- Leave-one-out results for
390 GERD on CWP"; F- Funnel plots of estimates for the association of GERD on CWP".)

391 **S1 Table. SNPs used as genetic instrumental variables for GERD or CWP.** (EAF-
392 effect allele frequency, SE-standard error, CWP'- SNPs of CWP used in the first
393 Mendelian analysis, CWP"- SNPs for CWP used in the second Mendelian analysis,
394 CWP- SNPs for CWP used in Mendelian analysis after removing all outliers.)

395 **S2 Table. Results of MR analysis before excluding outliers.**

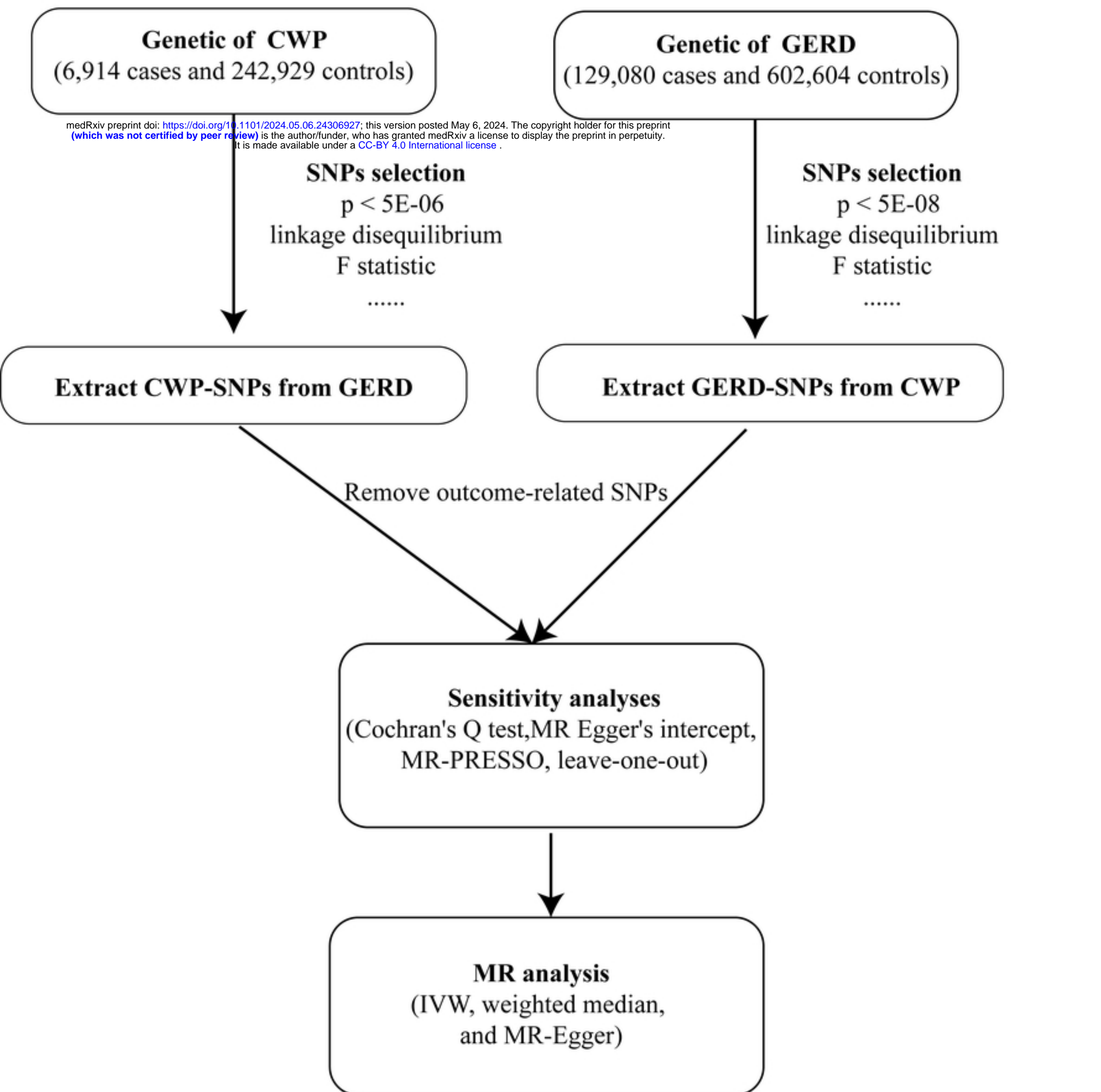


Figure □□



Figure □□

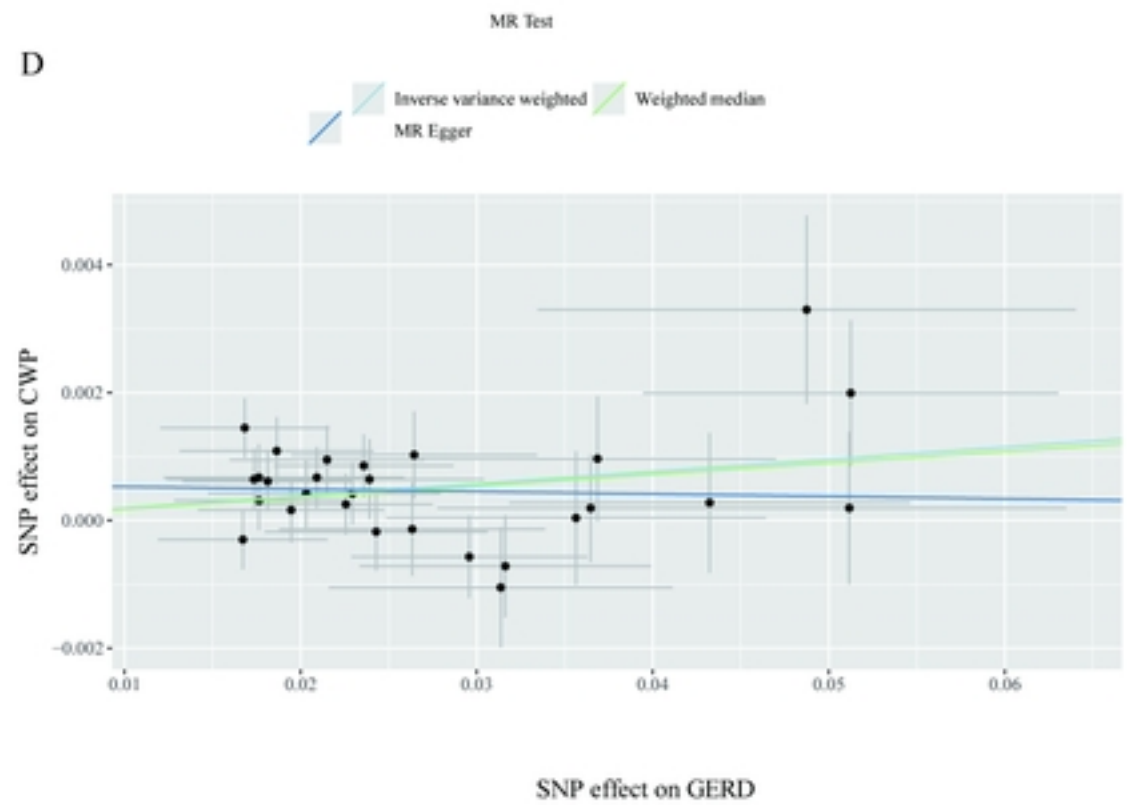
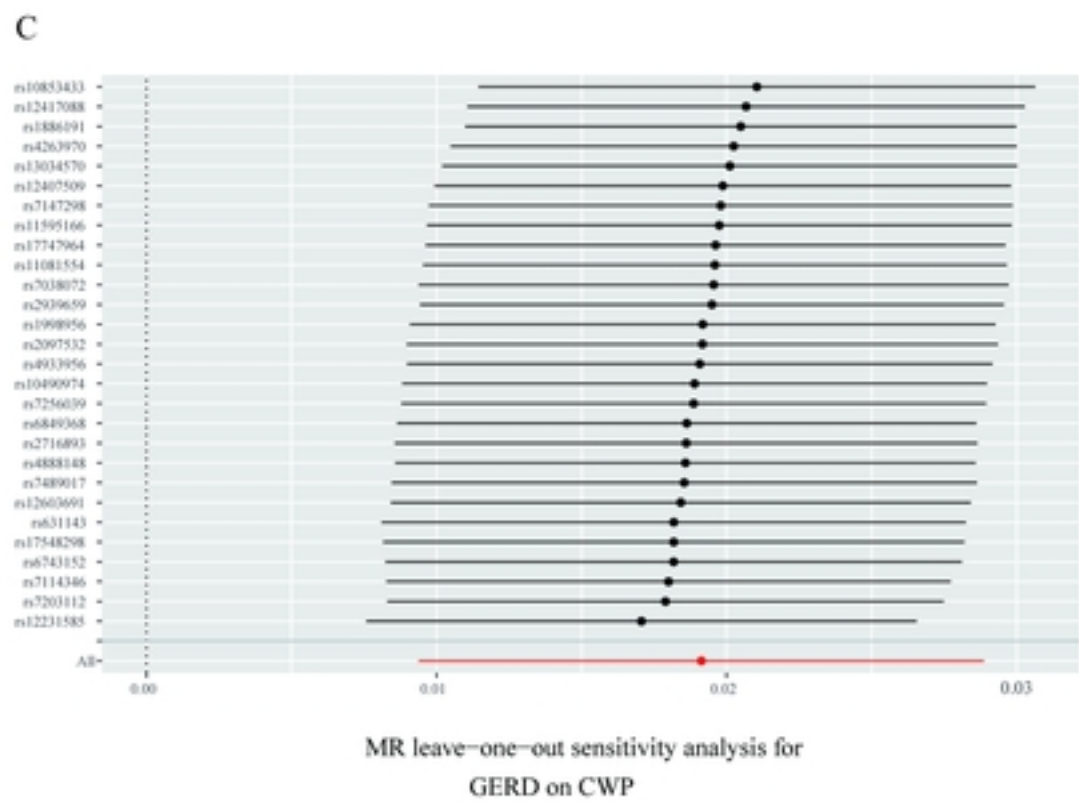
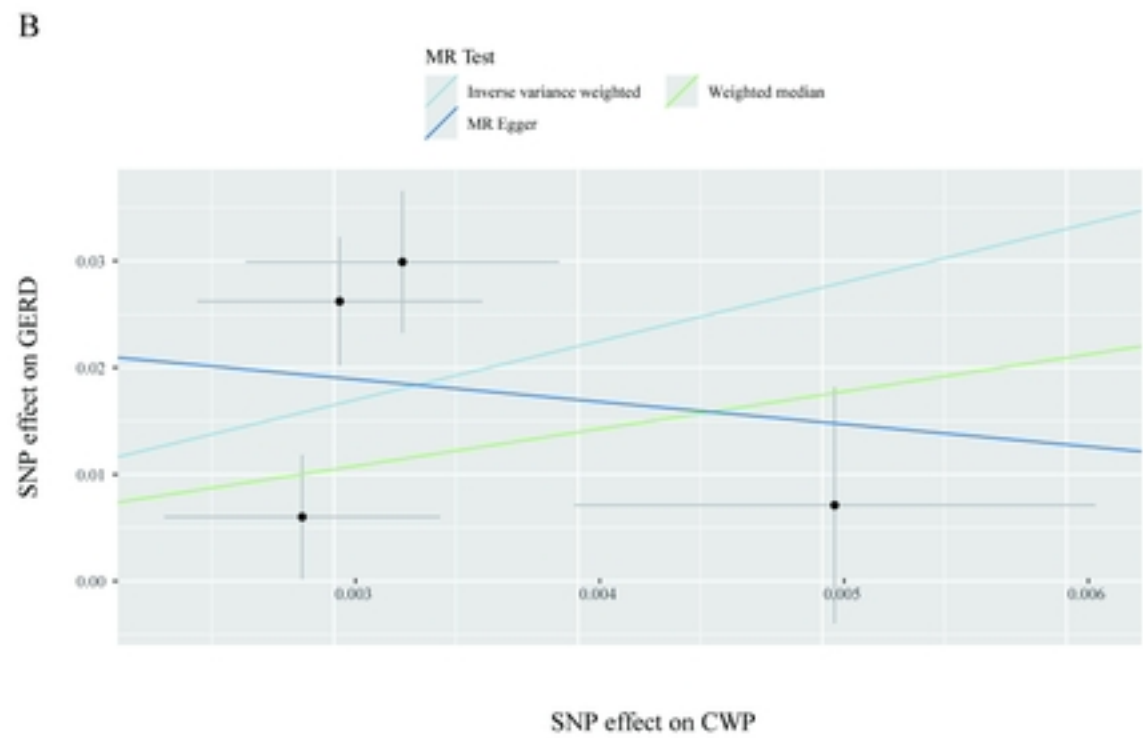
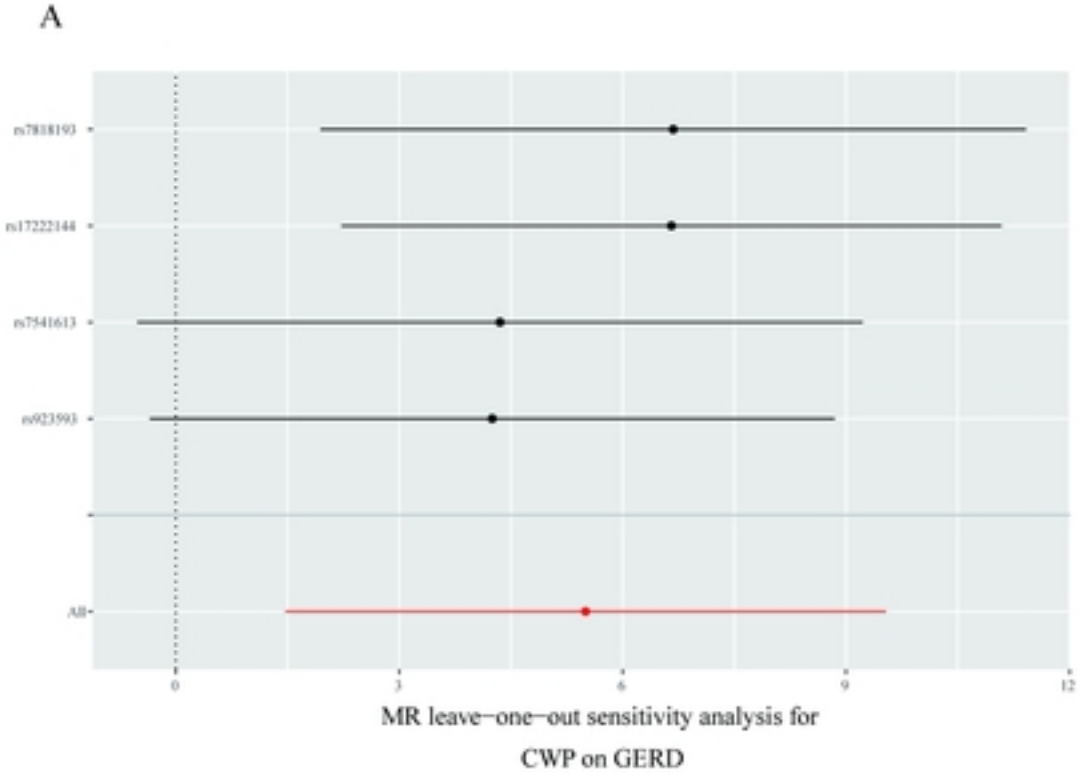


Figure 11