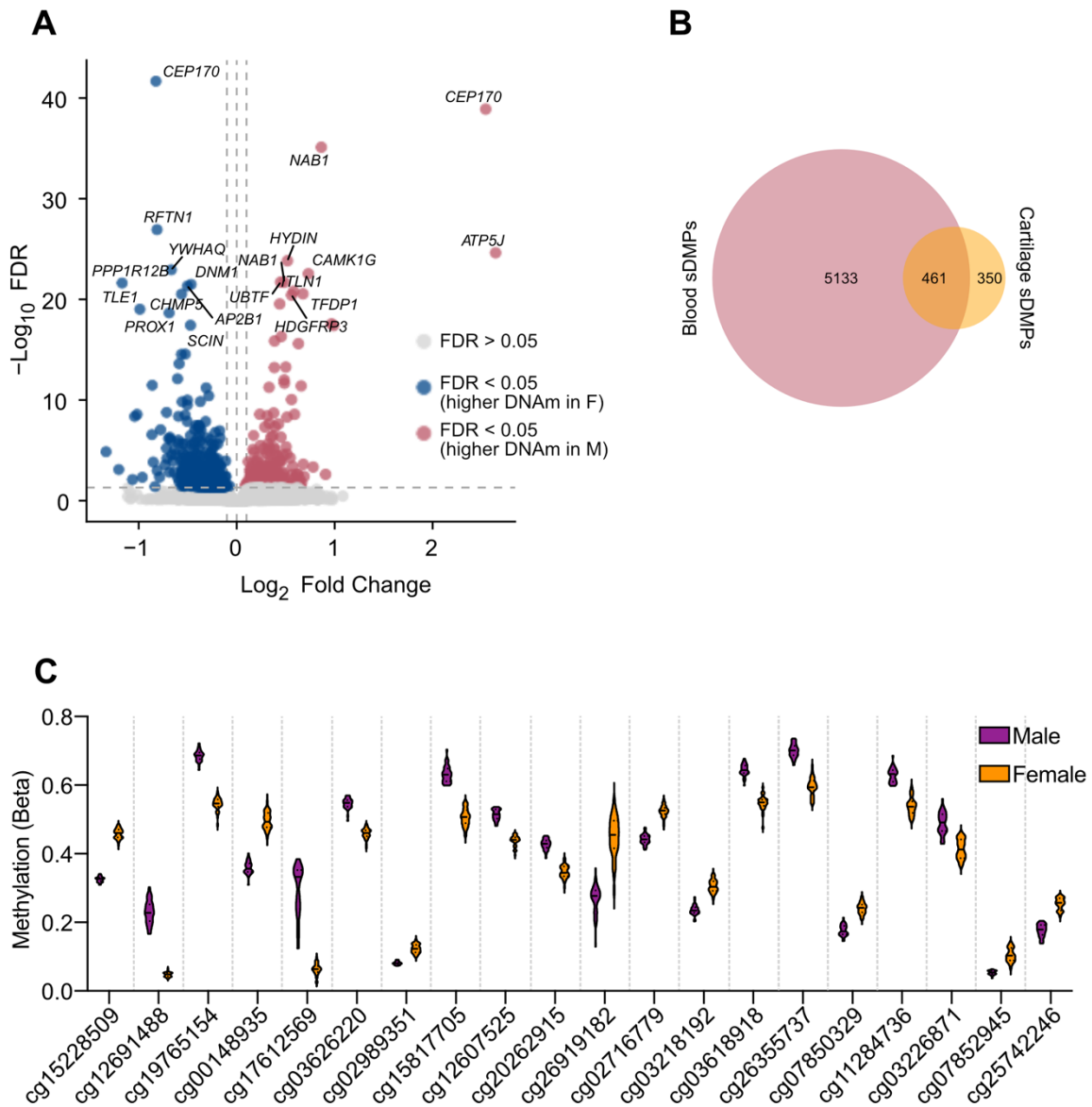
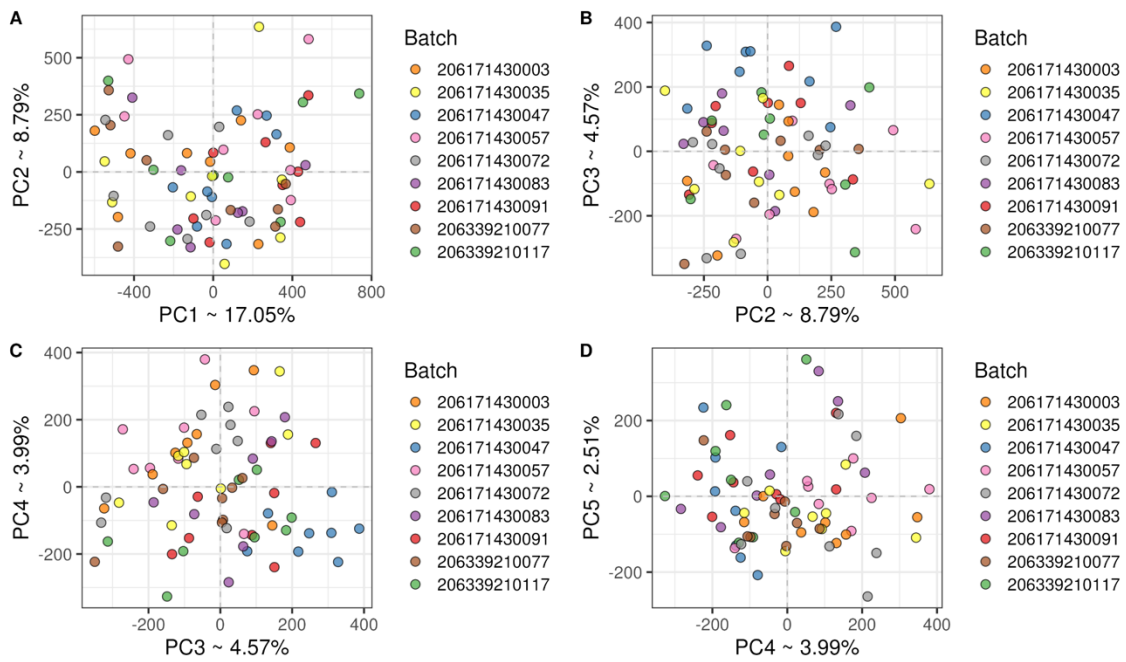


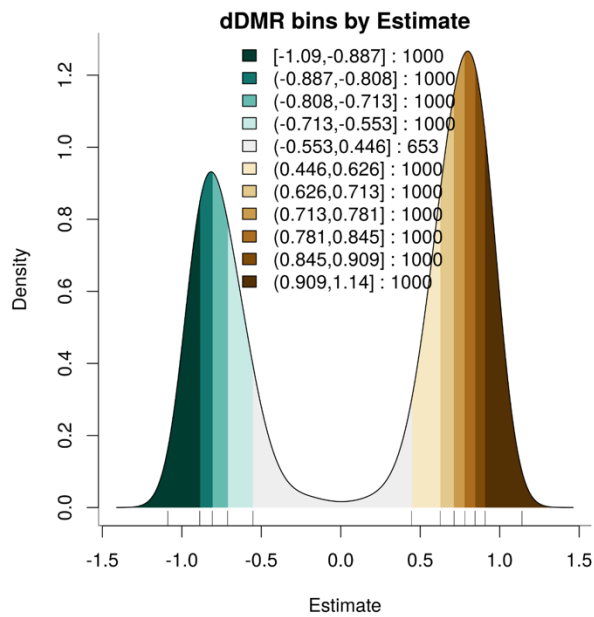
Supplementary Figure 1. Characterisation of the human knee cartilage samples. **A**, Alician blue and alizarin red staining of human foetal femur at 8pcw (left) and 16 pcw (right). **B-E**, Gene expression of cartilage progenitor (*GDF5* and *SOX9*) and chondrocyte (*PRG4* and *COL2A1*) makers in the samples. Simple linear regression was performed by the developmental stage.



Supplementary Figure 3. Sexual dimorphism in DNA methylation within human developmental cartilage. **A**, Volcano plot of sDMPs. Grey, non-significant sDMPs (FDR adjusted P-value (P_{adj}) < 0.05); Blue, significant sDMPs with higher methylation in female (F) samples (P_{adj} < 0.05); Red, significant sDMPs with higher methylation in male (M) samples (P_{adj} < 0.05). **B**, Venn diagram of overlap between sDMPs in neonatal blood reported in Santos *et al.* (pink) and foetal cartilage (orange). **C**, Methylation beta values in human foetal cartilage samples at the most significant sDMP CpGs. Purple, male; orange, female.



Supplementary Figure 4. Assessment of batch effects by principal component analysis of the 71 foetal cartilage samples used in this study. Principal component analysis of normalised DNAm samples coloured by Sentrax ID shows evidence of weak batch effects, observable in-association with PC3 and PC4.



Supplementary Figure 5. Developmental differentially methylated region (dDMR) bins for transcription factor motif analysis. Histogram of the equally sized groups of developmental DMRs binned by Estimate (log₂ fold change) that were used for transcription factor motif analysis with monaLisa.